



SUPERIOR
Hays,
Kansas

SONIC
LOG

Company ABARTA OIL & GAS CO. INC.
Well ANCHOR CATTLE #1
Field CLARK
County LANE
State KANSAS

Company ABARTA OIL AND GAS COMPANY INC.
Well ANCHOR CATTLE #1
Field CLARK
County LANE State KANSAS

Location: API # : 15-101-22154-0000
1712'FSL & 830'FWL
NW-SE-NW-SW
SEC 18 TWP 19S RGE 29W
Permanent Datum GROUND LEVEL Elevation 2857
Log Measured From KELLY BUSHING 5' A.G.L.
Drilling Measured From KELLY BUSHING
Other Services
CDL/CNL
DIL/MICRO
Elevation
K.B. 2862
D.F. 2860
G.L. 2857

Date	26 FEB 09		
Run Number	ONE		
Depth Driller	4663		
Depth Logger	4663		
Bottom Logged Interval	4656		
Top Log Interval	348		
Casing Driller	8 5/8 @ 349'		
Casing Logger	348'		
Bit Size	7 7/8		
Type Fluid In Hole	CHEMICAL		
Density / Viscosity	9.4/48	CHLORIDES 3000	
pH / Fluid Loss	9.3/8.8		
Source of Sample	FLOWLINE		
Rm @ Meas. Temp	1.35 @ 77F		
Rmf @ Meas. Temp	1.01 @ 77F		
Rmc @ Meas. Temp	1.62 @ 77F		
Source of Rmf / Rmc	CAL/CAL		
Rm @ BHT	0.85 @ 122F		
Time Circulation Stopped	2 HOURS		
Time Logger on Bottom	7:00 PM		
Maximum Recorded Temperature	122F		
Equipment Number	680		
Location	HAYS, KS		
Recorded By	JEFF GRONEWEG	JOE CRATHORNE	
Witnessed By	SCOTT ALBERG		

<<< Fold Here >>>

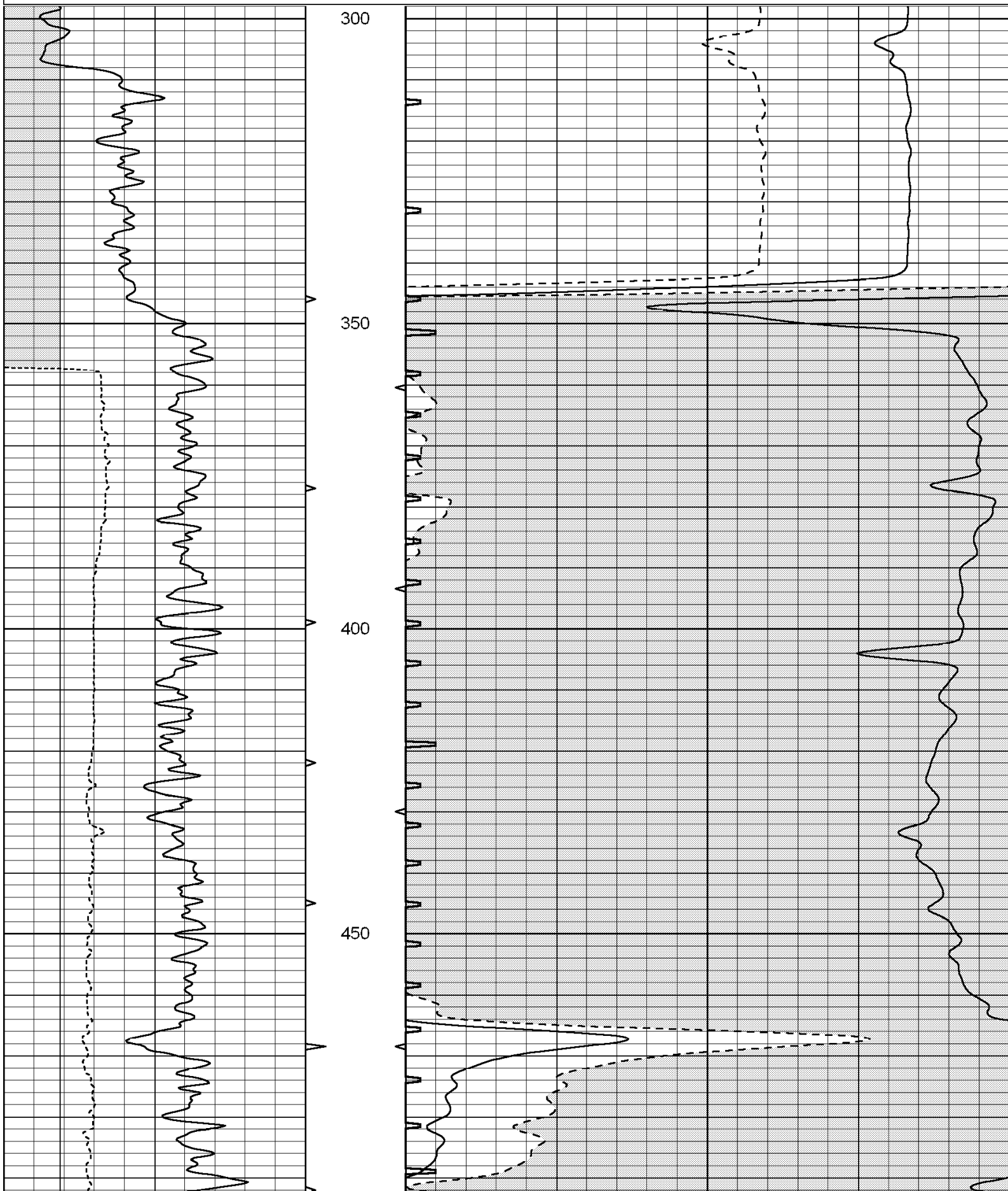
All interpretations are opinions based on inferences from electrical or other measurements and we cannot and do not guarantee the accuracy or correctness of any interpretation, and we shall not, except in the case of gross or willful negligence on our part, be liable or responsible for any loss, costs, damages, or expenses incurred or sustained by anyone resulting from any interpretation made by any of our officers, agents or employees. These interpretations are also subject to our general terms and conditions set out in our current Price Schedule.

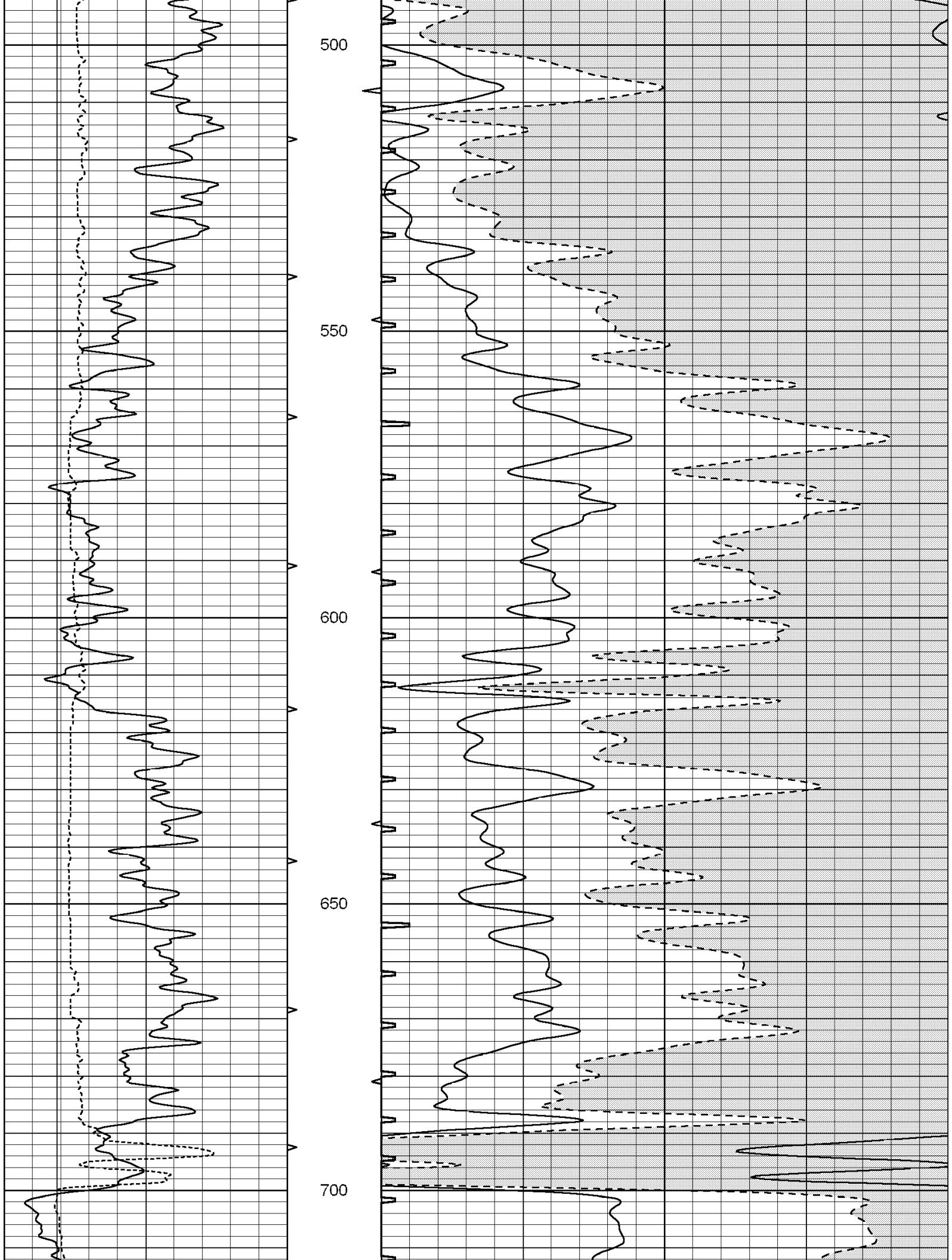
Comments

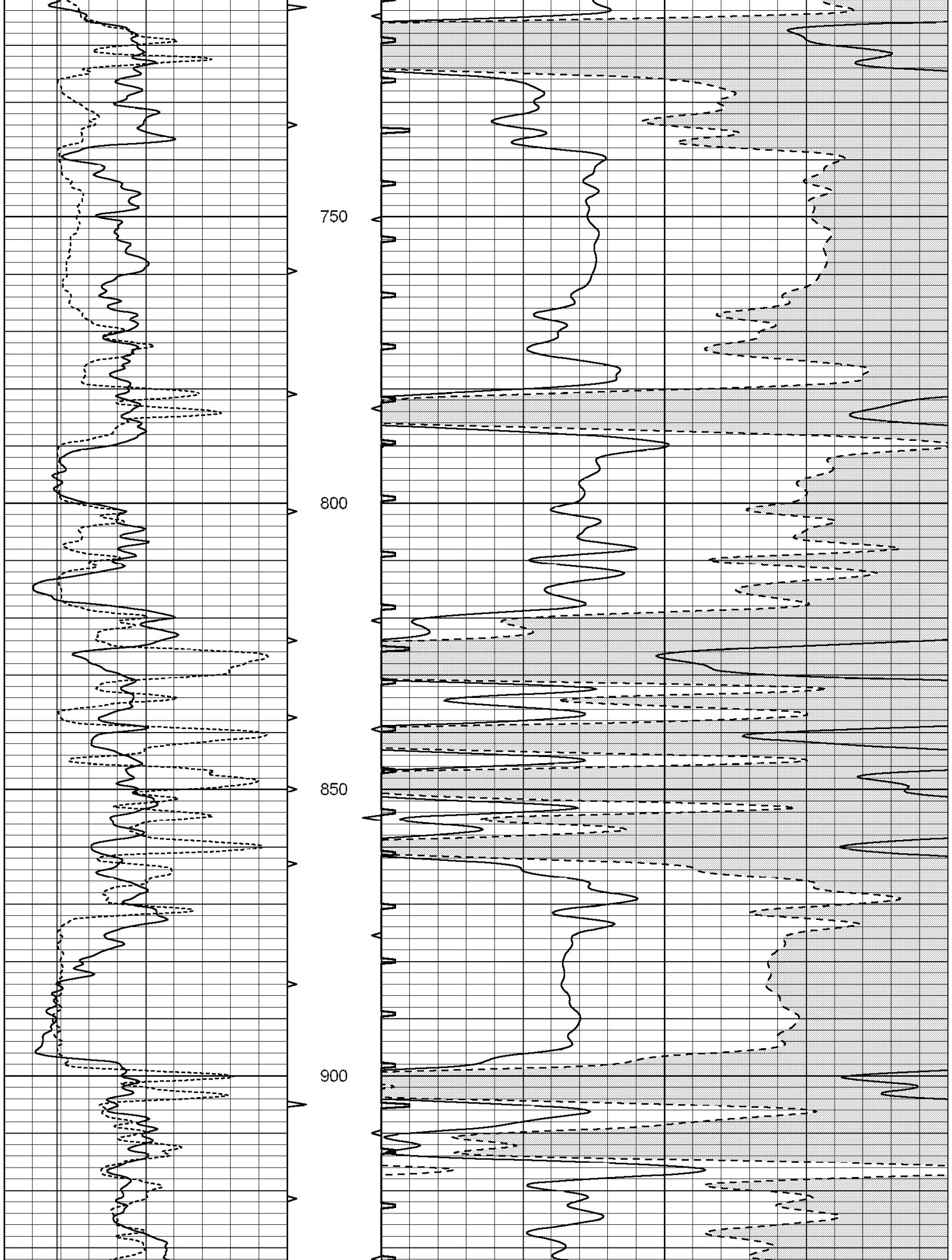
THANK YOU FOR USING SUPERIOR WELL SERVICES
HAYS, KS. 785-628-6395

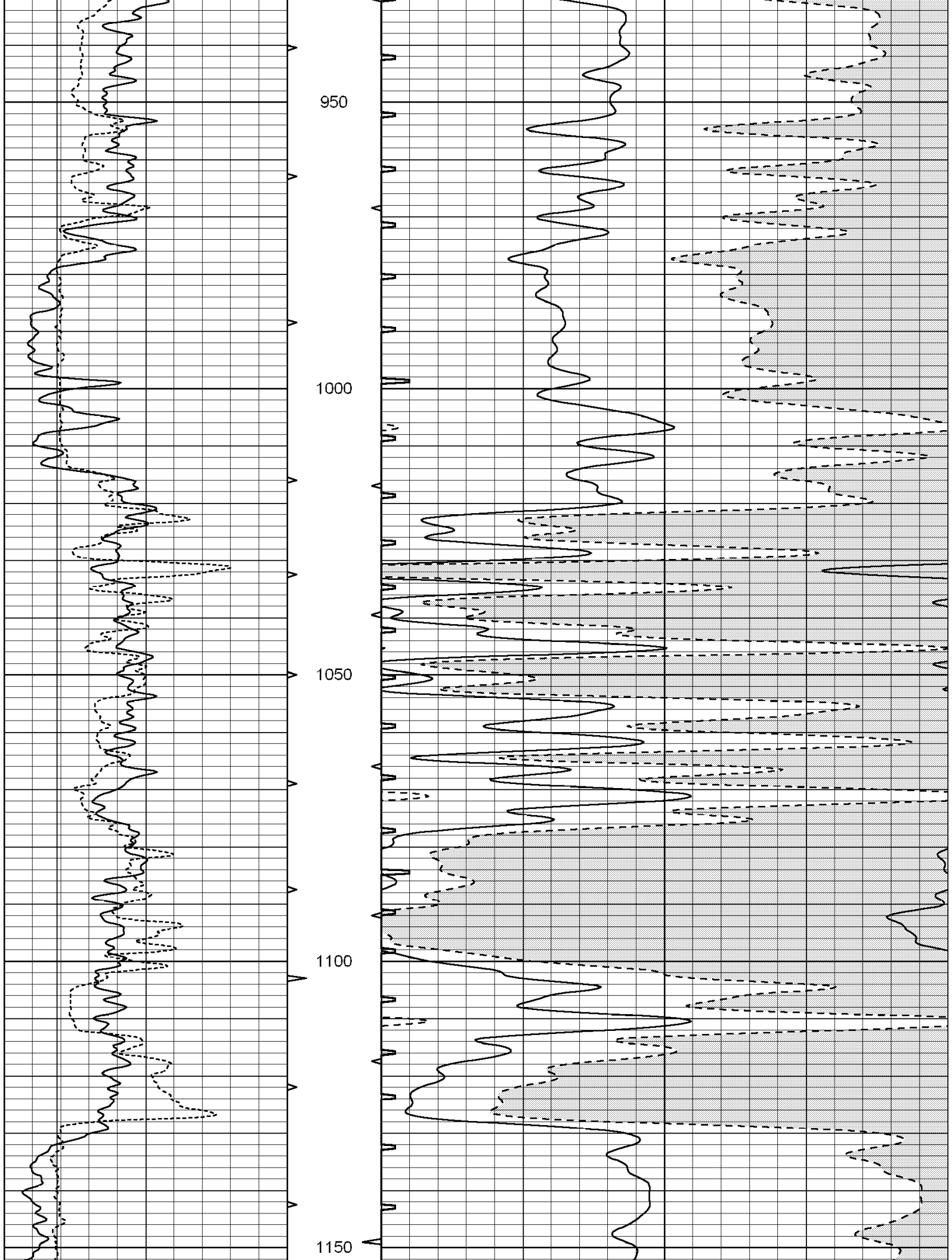
DIRECTIONS: DIGHTON; 6 MILES SOUTH ON HWY 23 TO RD 90, 6 MILES WEST, NORTH INTO

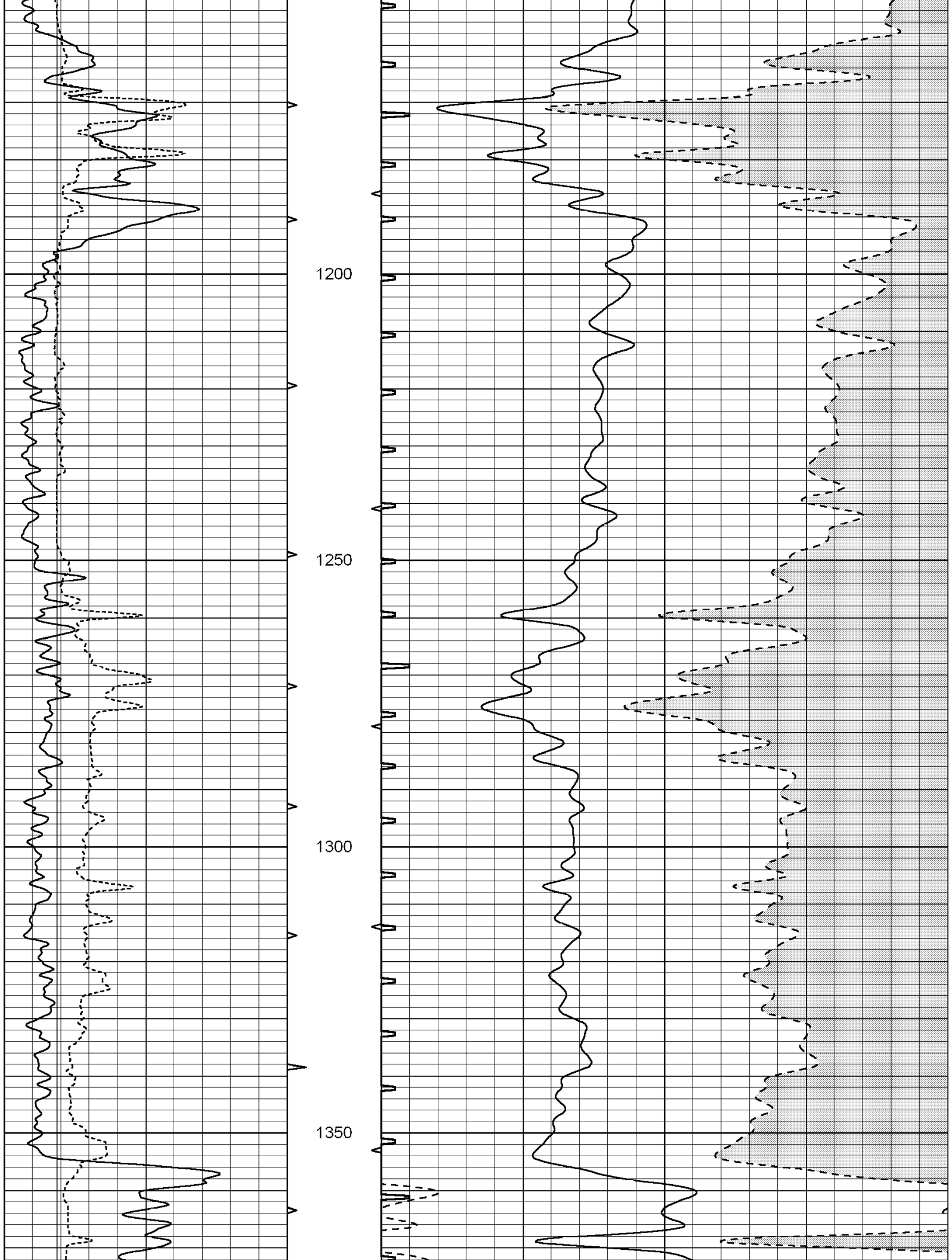
0	GAMMA RAY (GAPI)	150	ABHV	140	DELTA TIME (usec/ft)	40
6	CALIPER (in)	16	10 (ft3) 0	30	SONIC POROSITY (pu)	-10
			TBHV	0	ITT (msec)	20
			0 (ft3) 10			

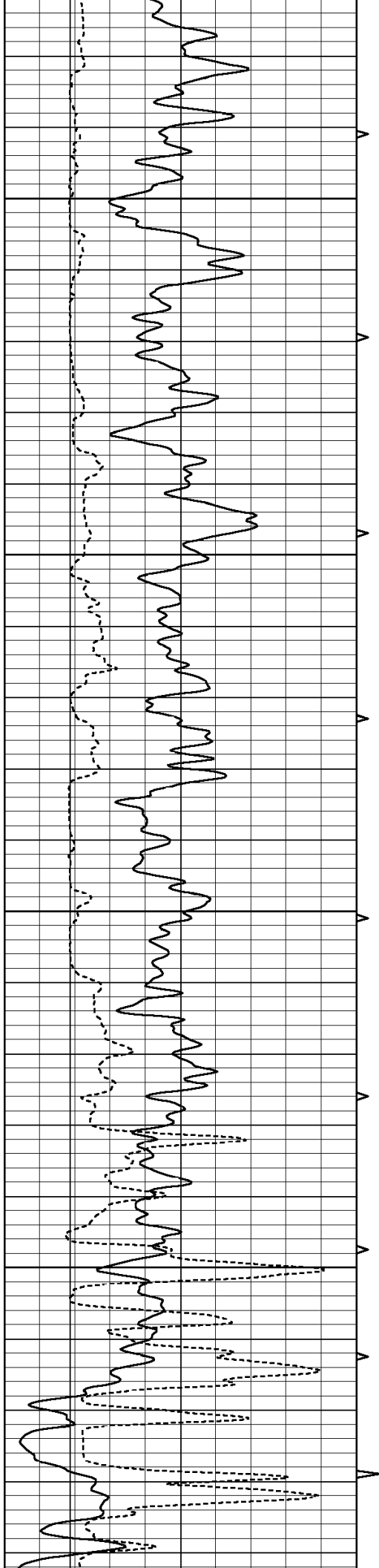










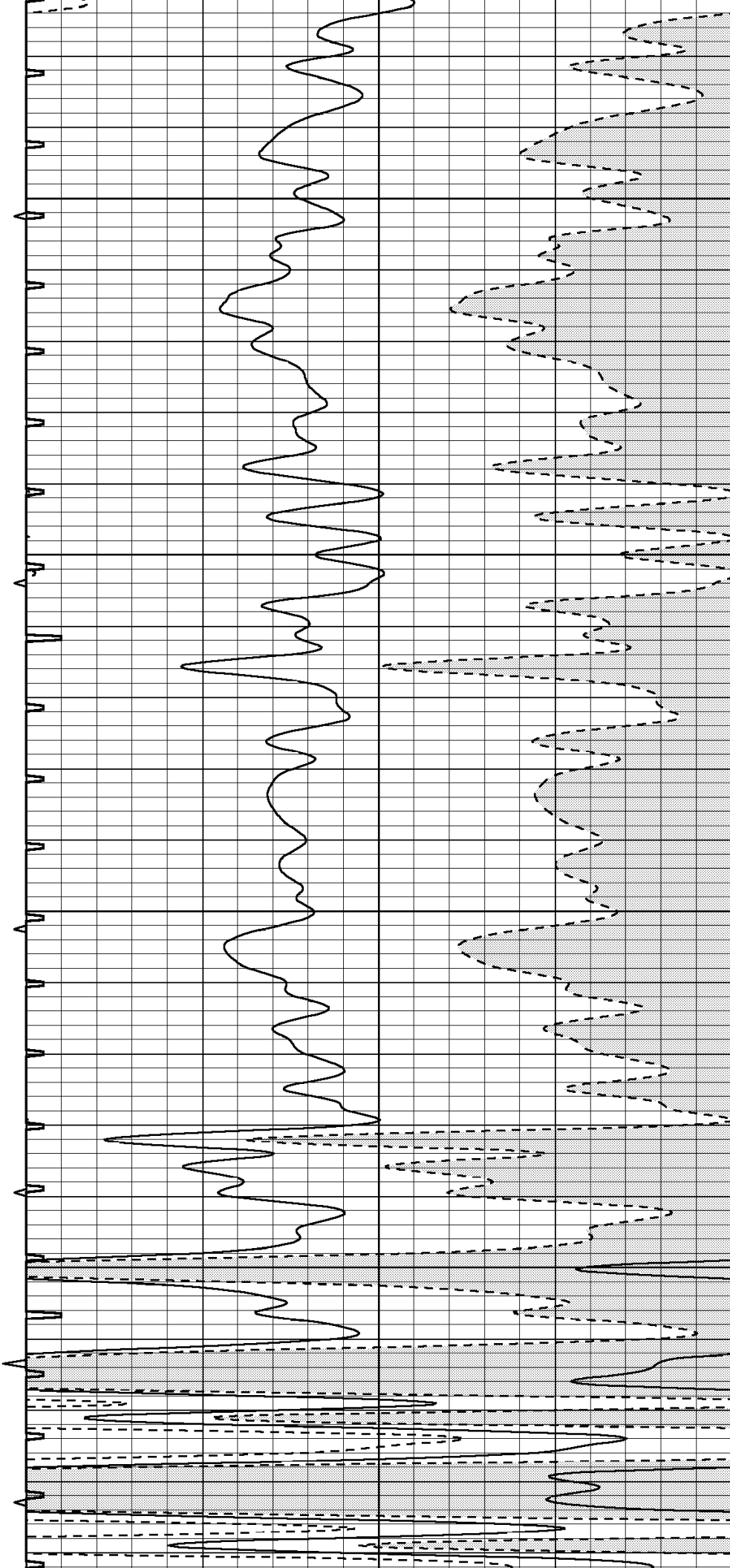


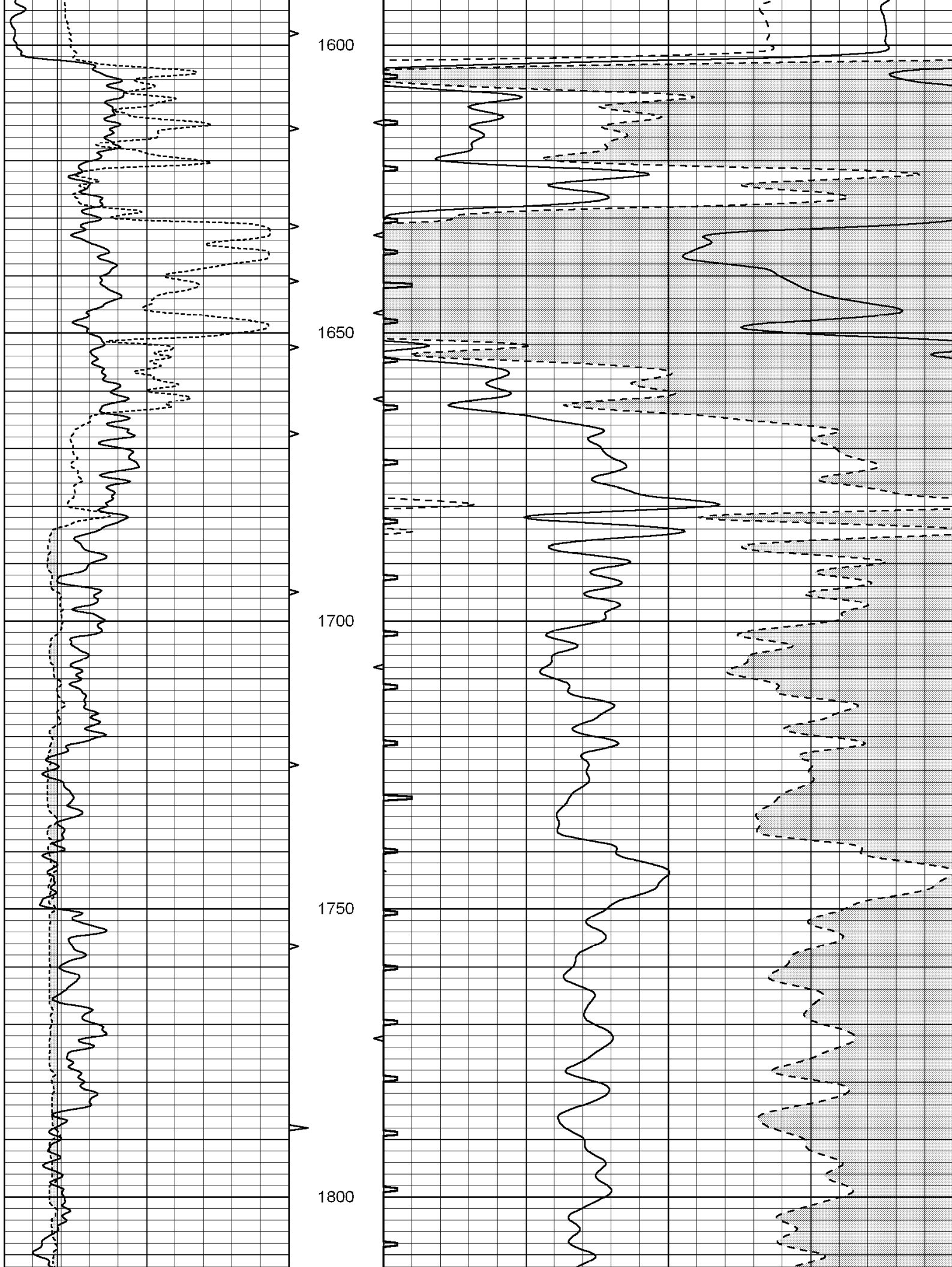
1400

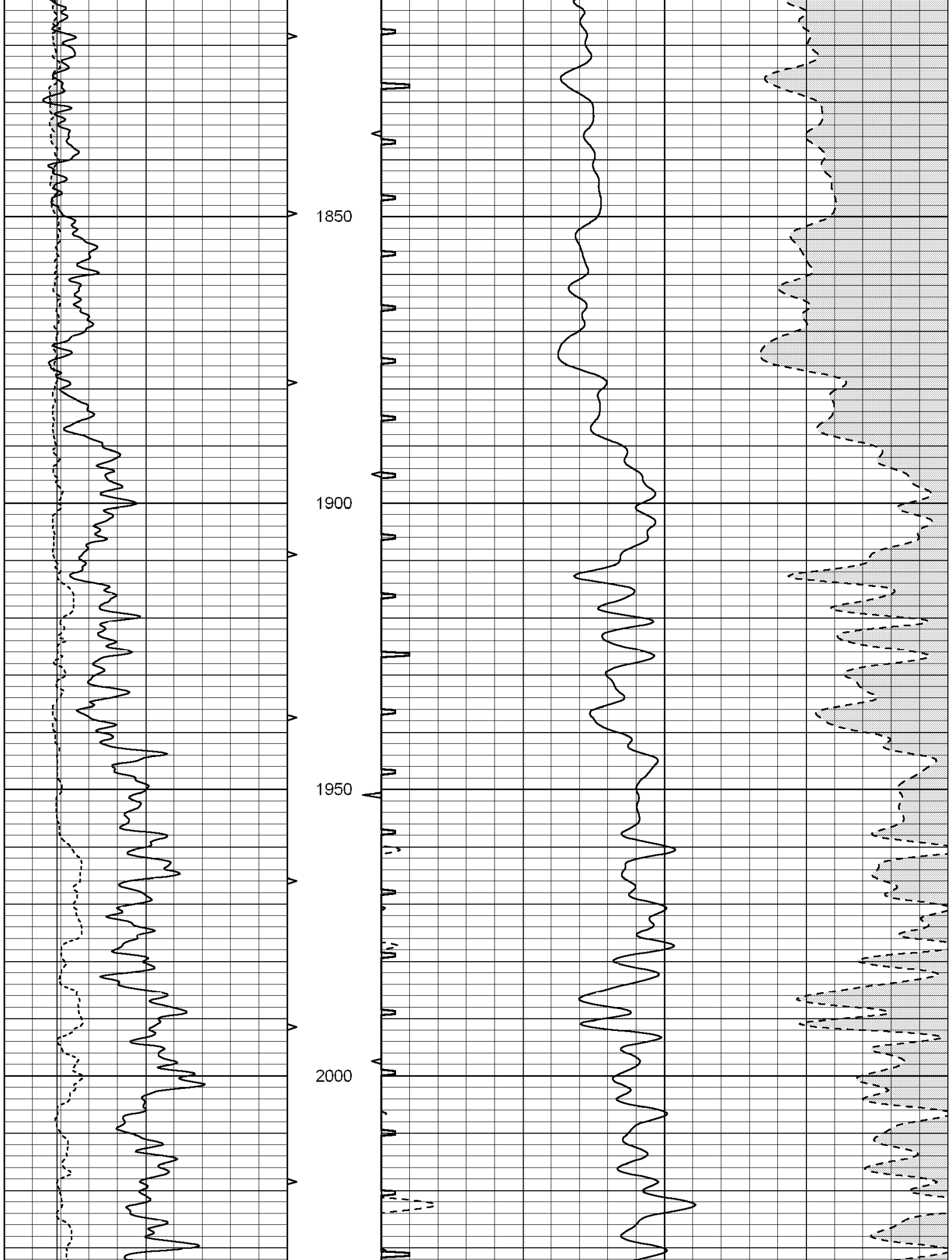
1450

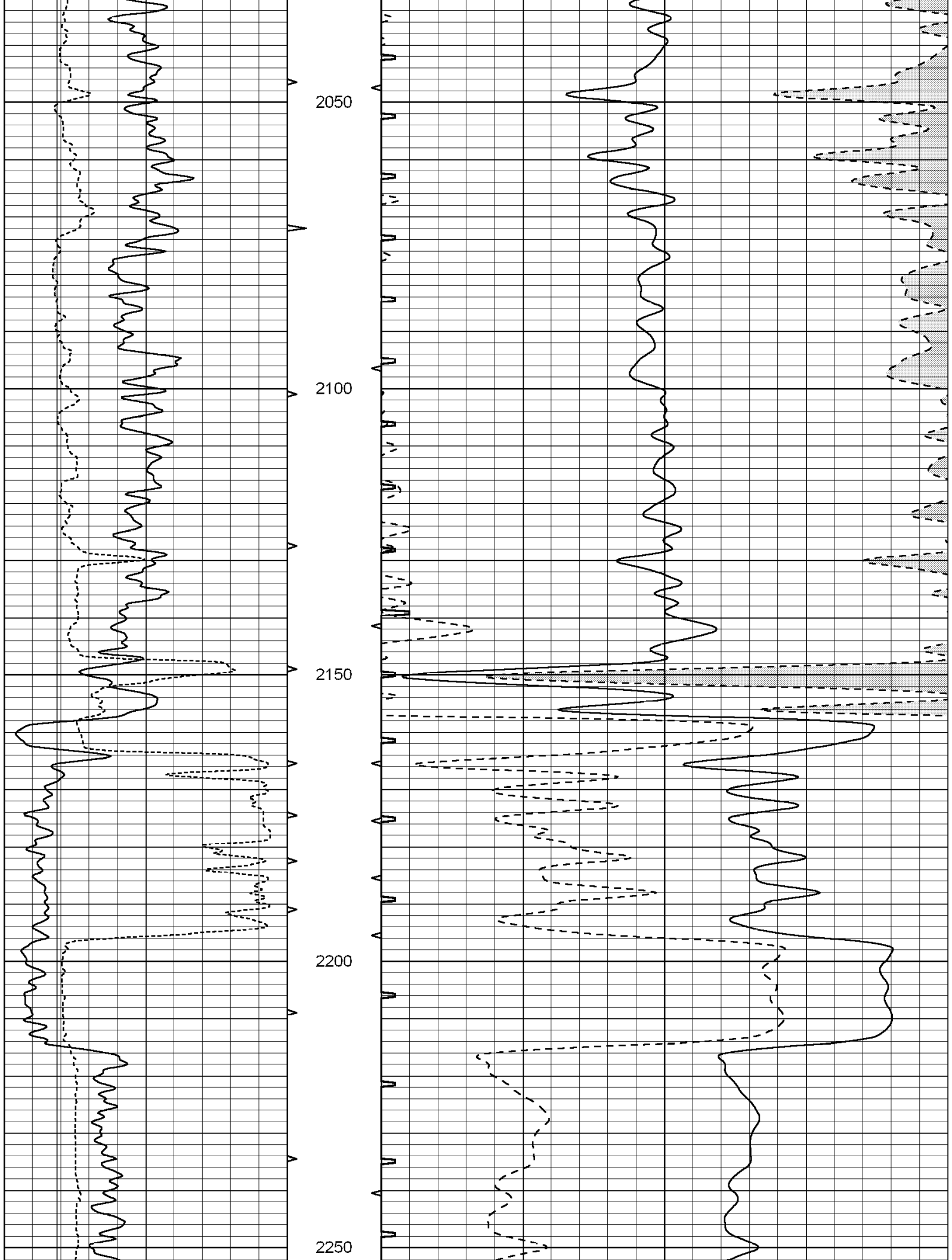
1500

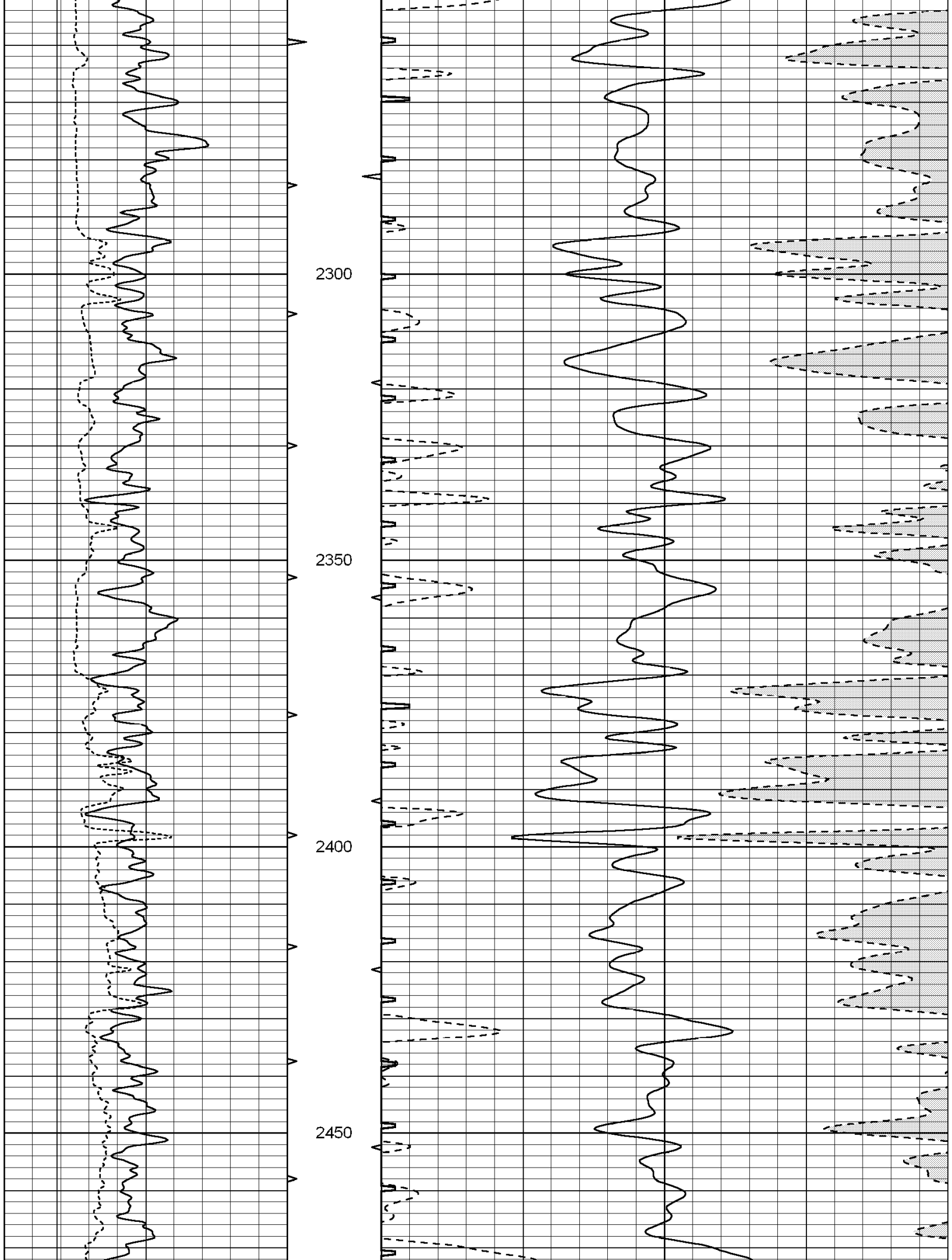
1550

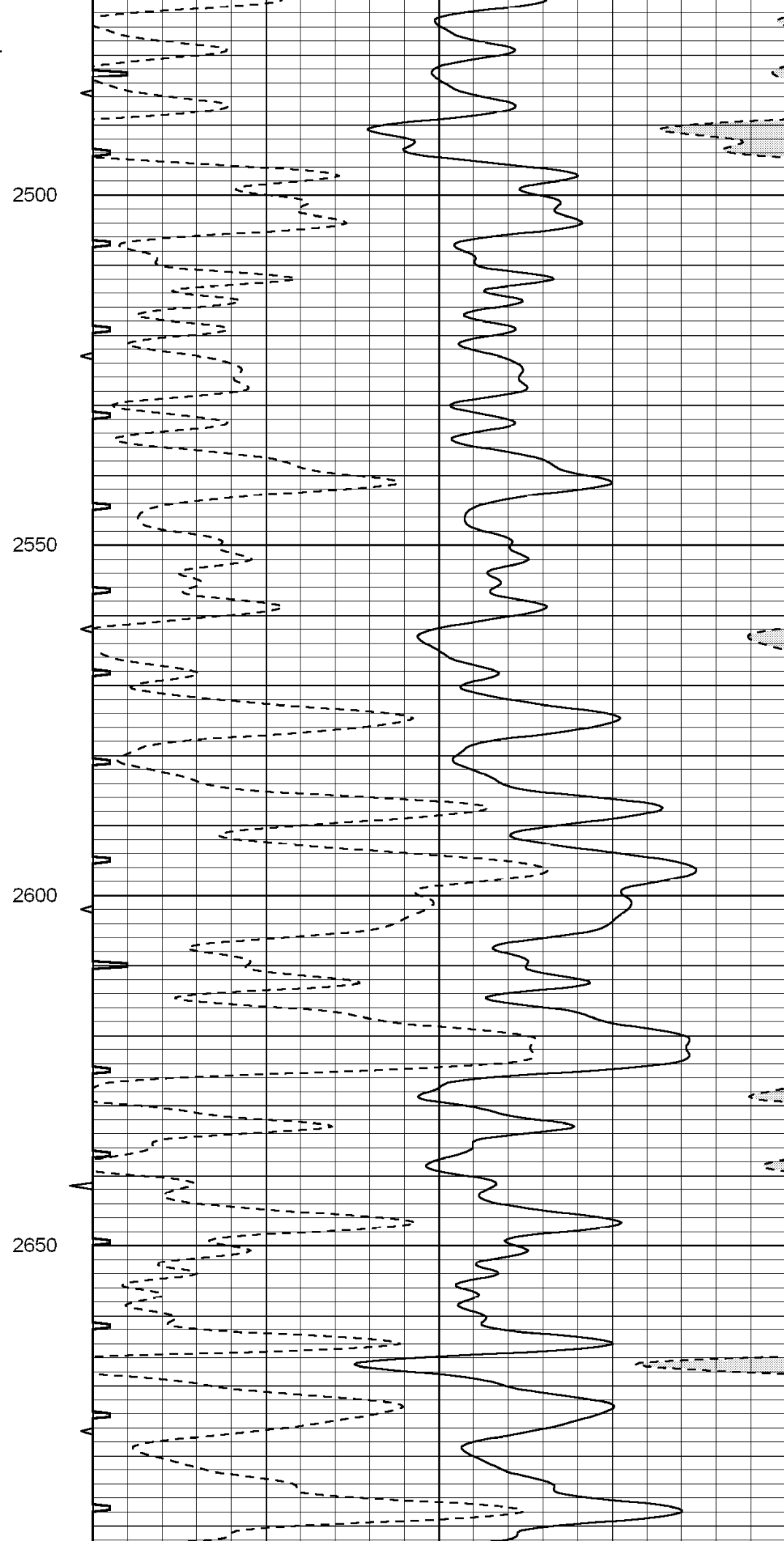
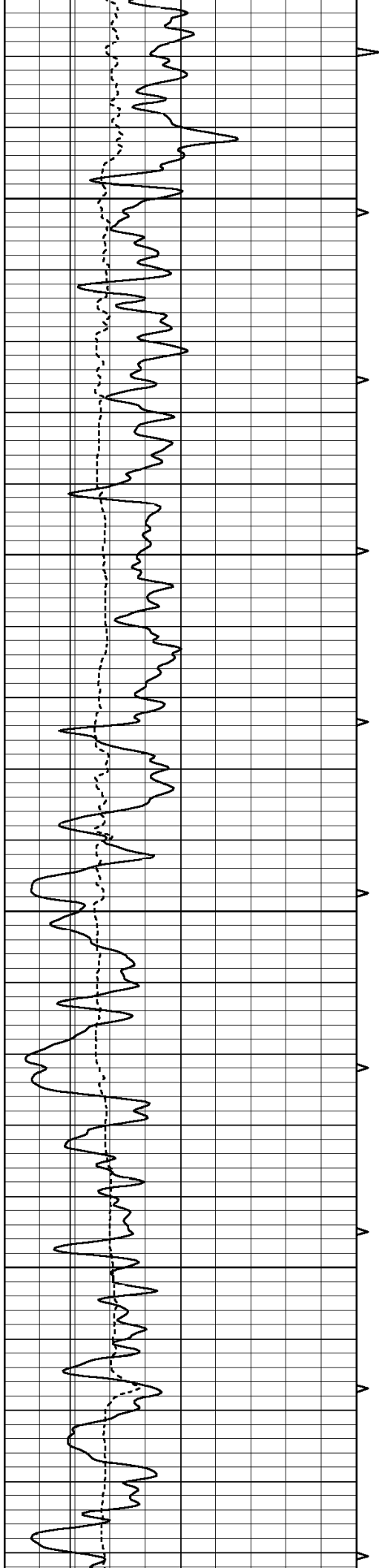


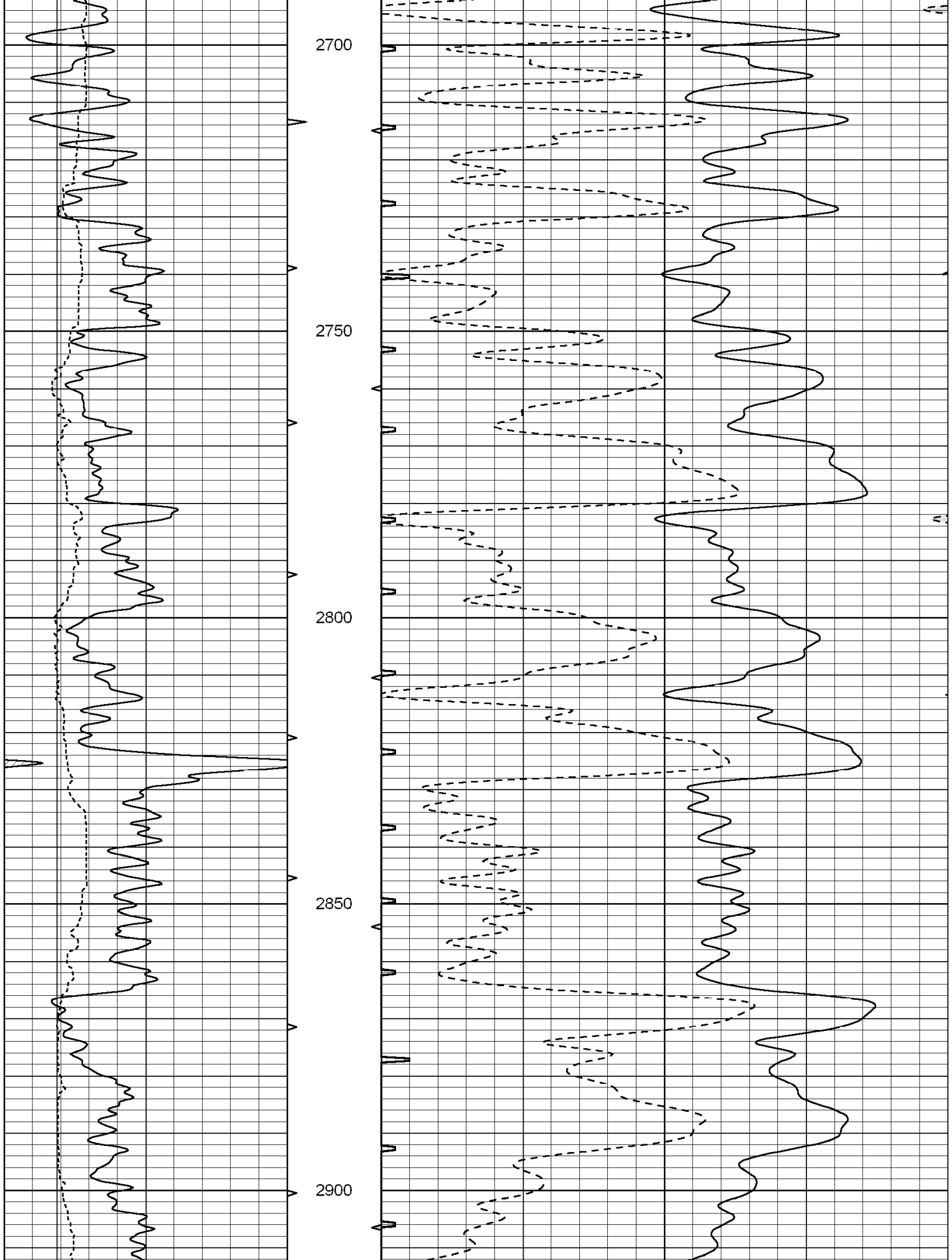


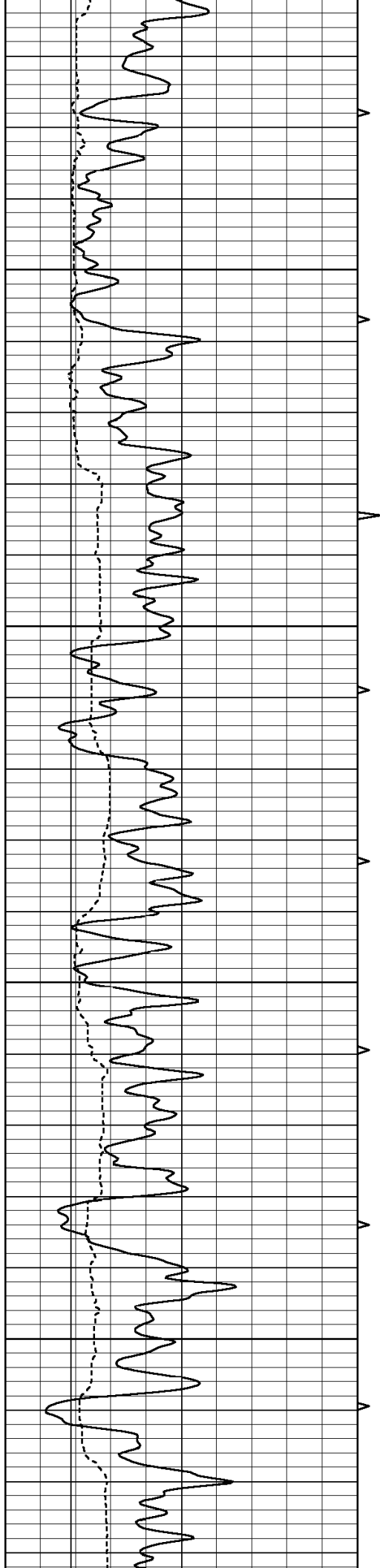










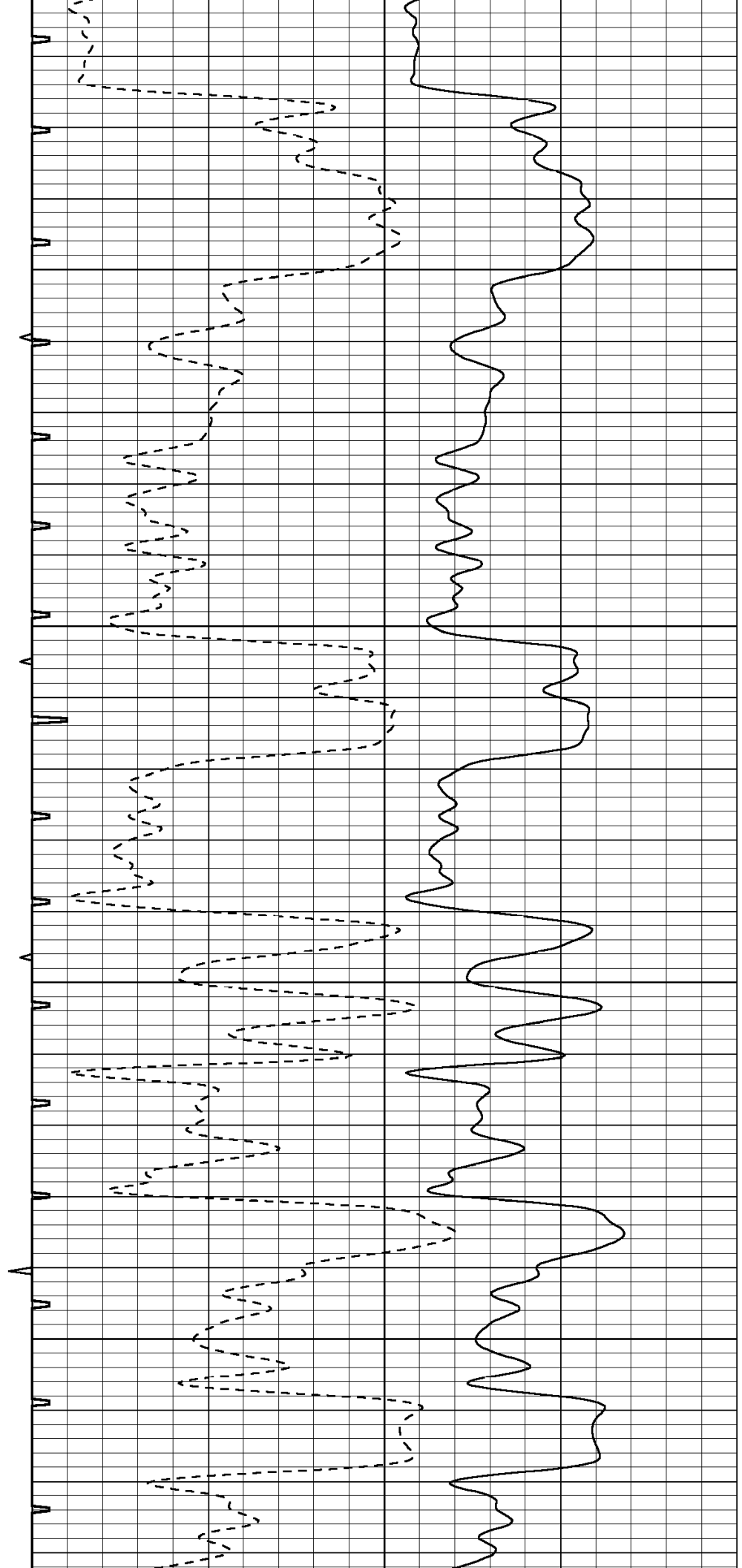


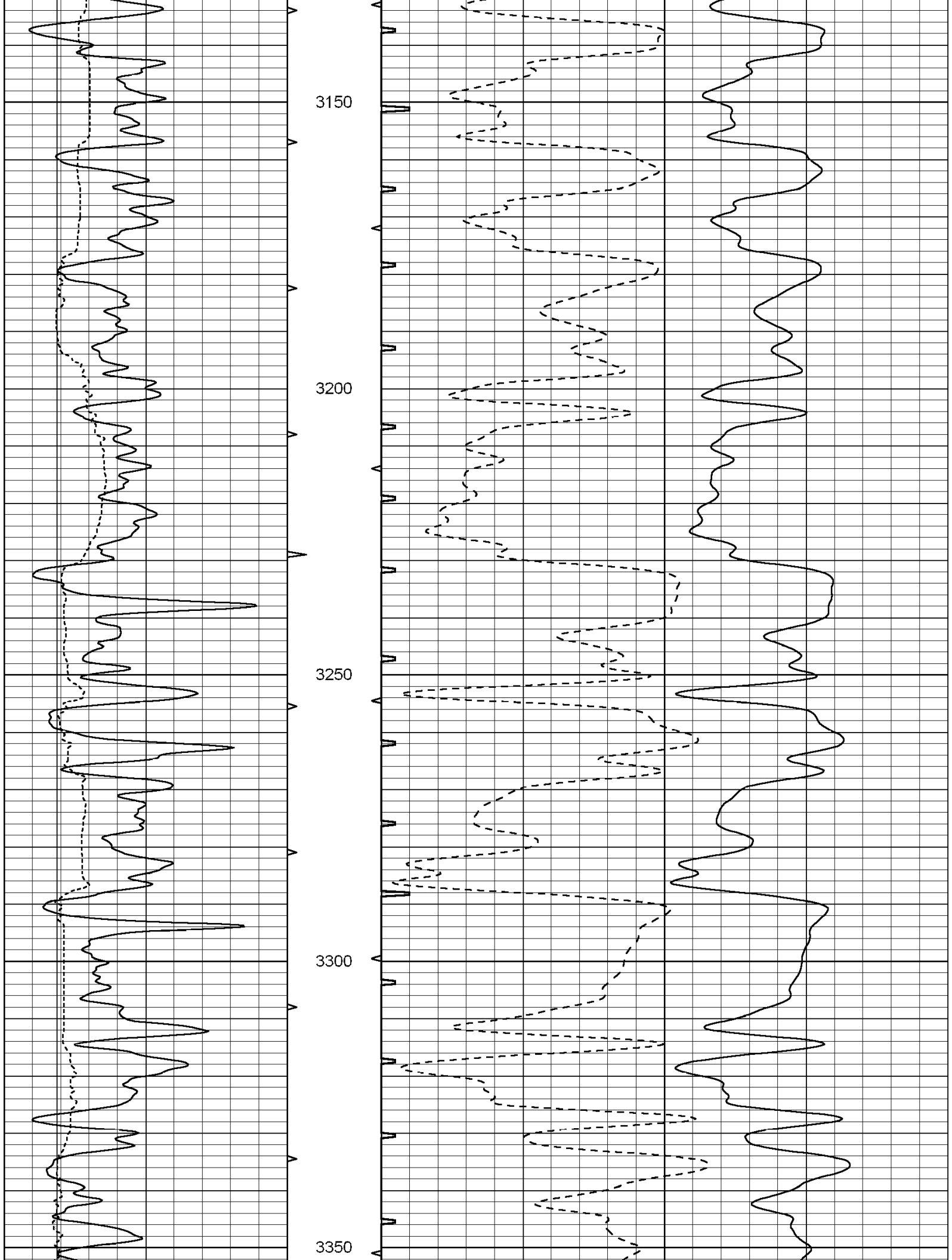
2950

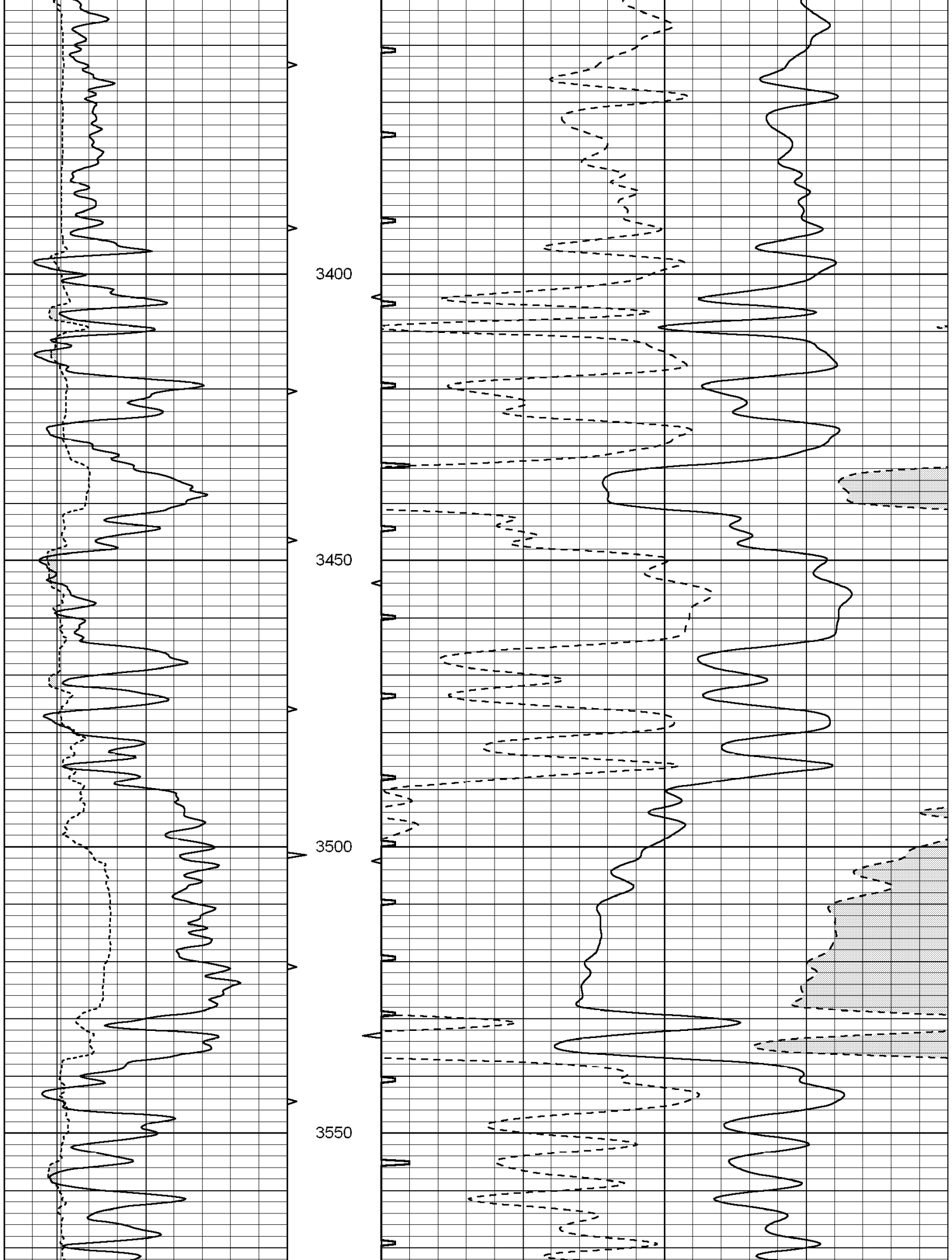
3000

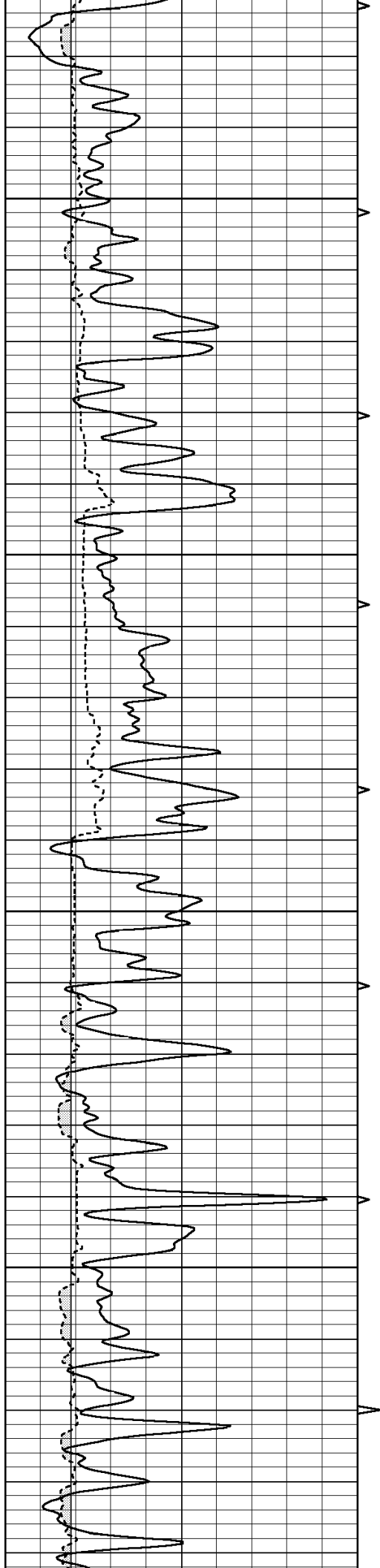
3050

3100







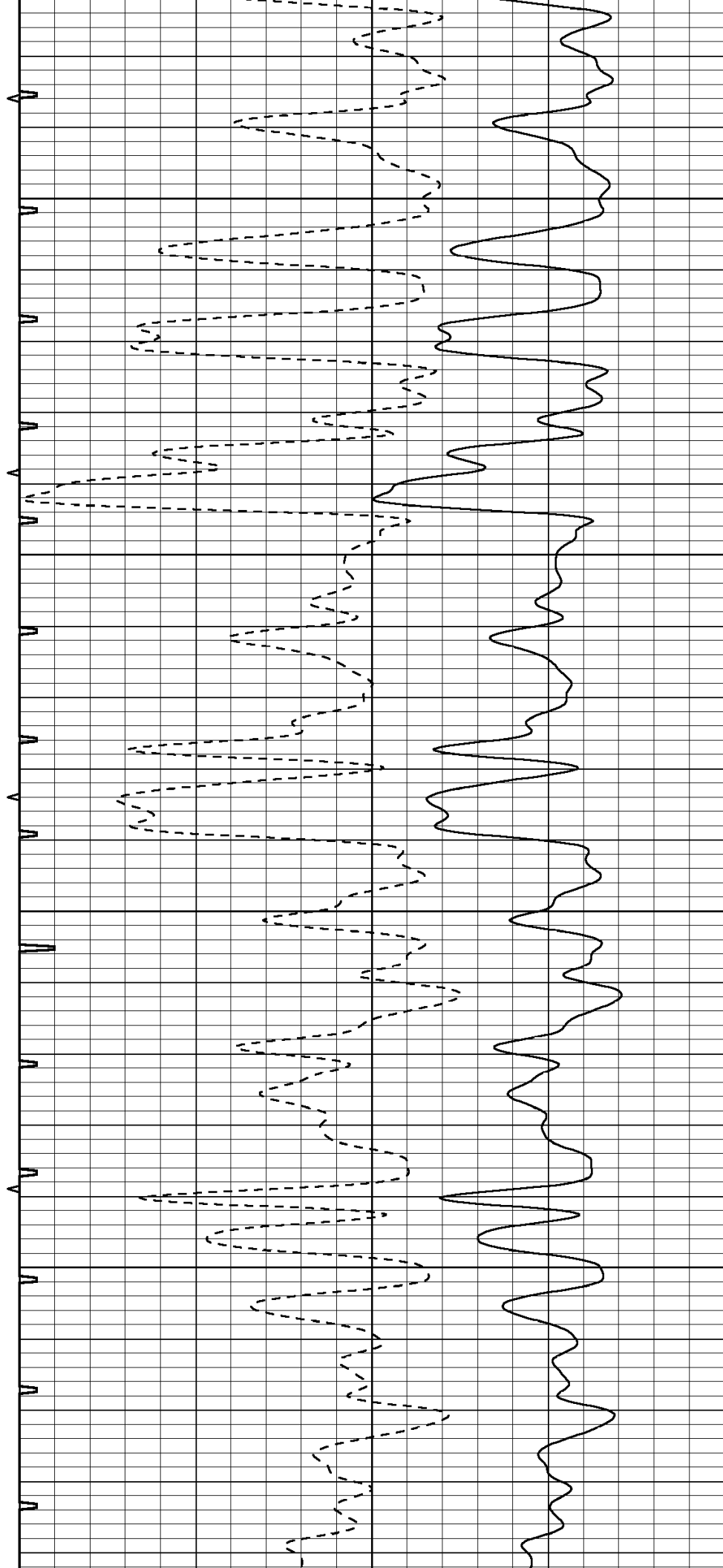


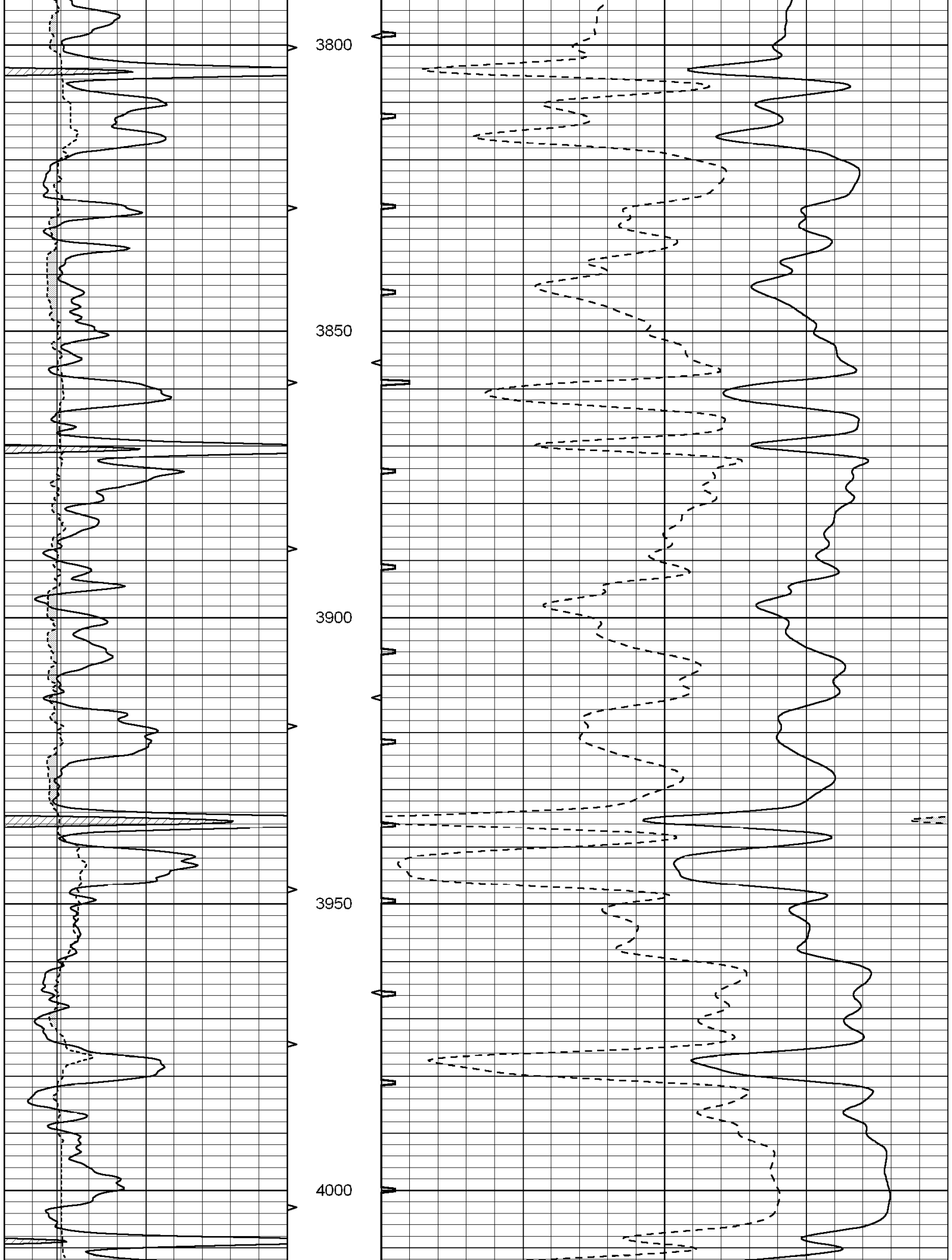
3600

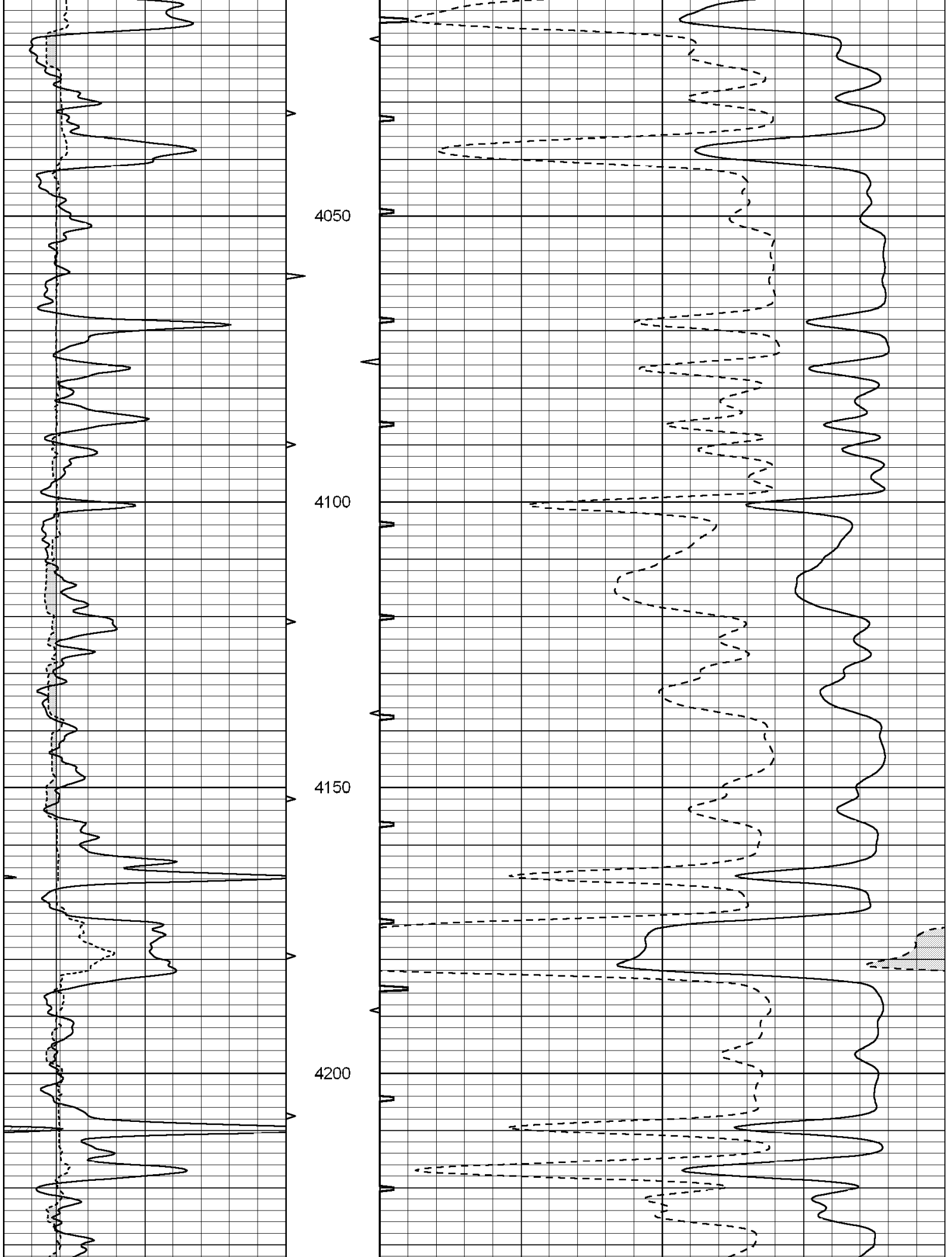
3650

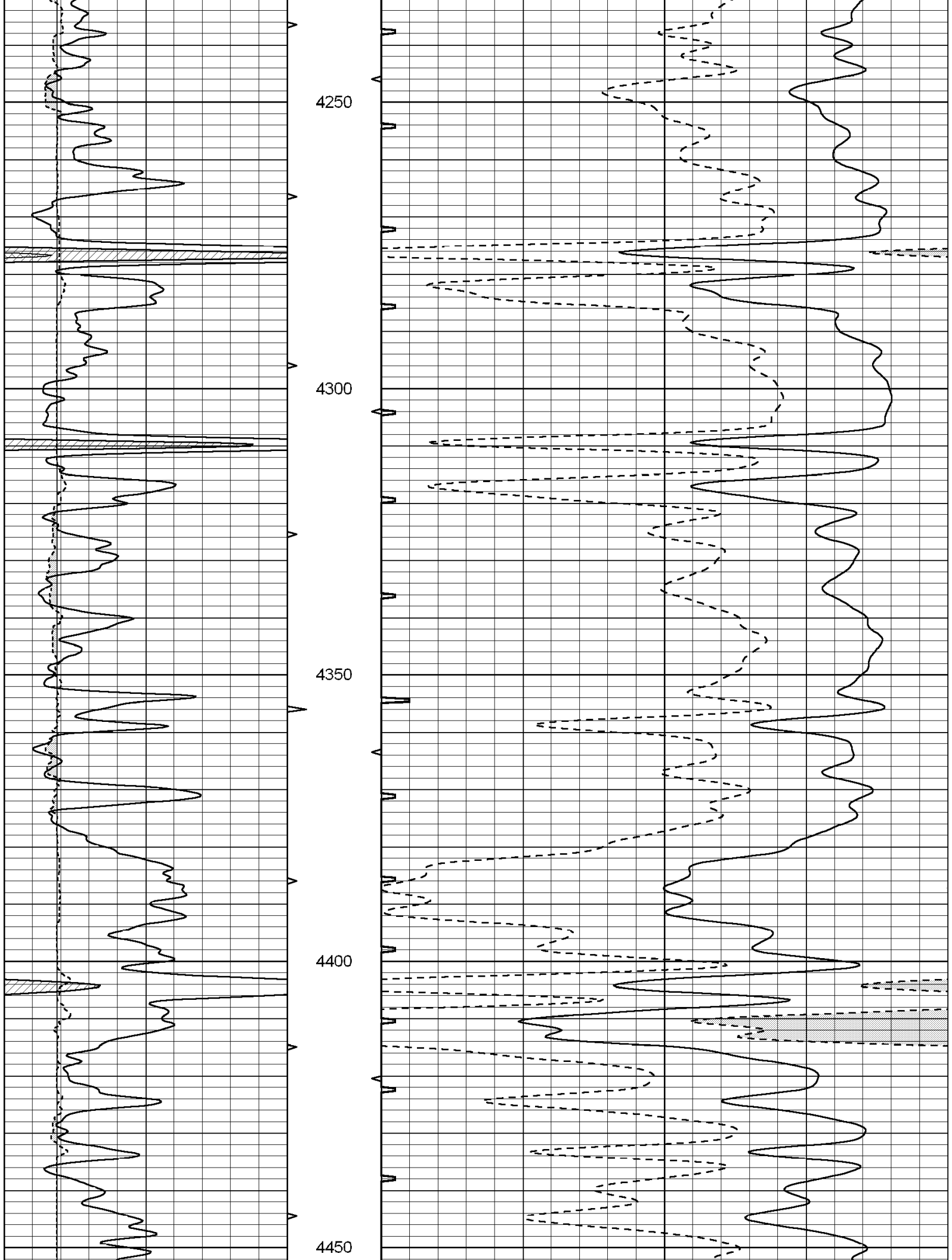
3700

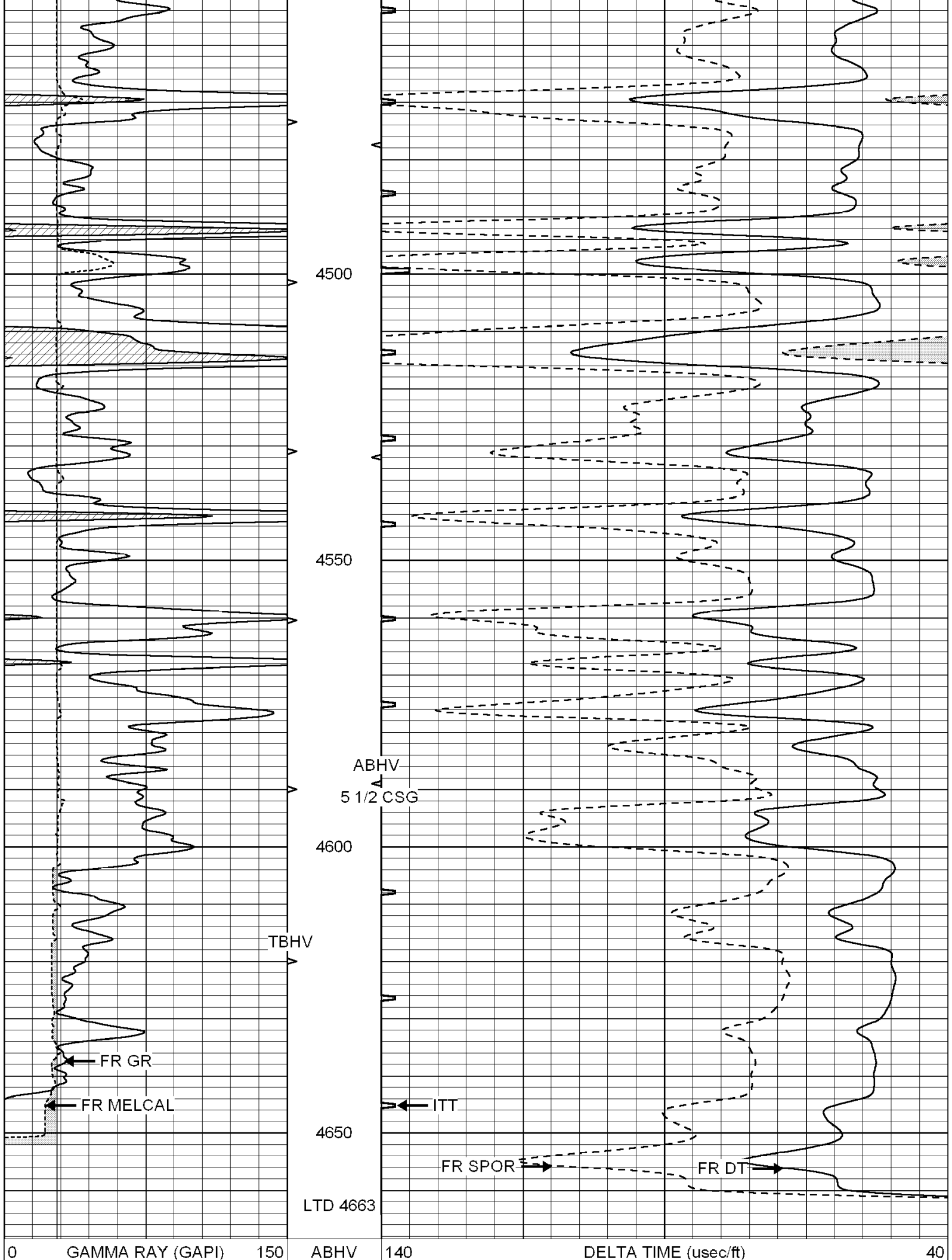
3750











6	CALIPER (in)	16	10 (ft3)	0	30	SONIC POROSITY (pu)	-10
			TBHV	0	ITT (msec)	20	
			0 (ft3)	10			

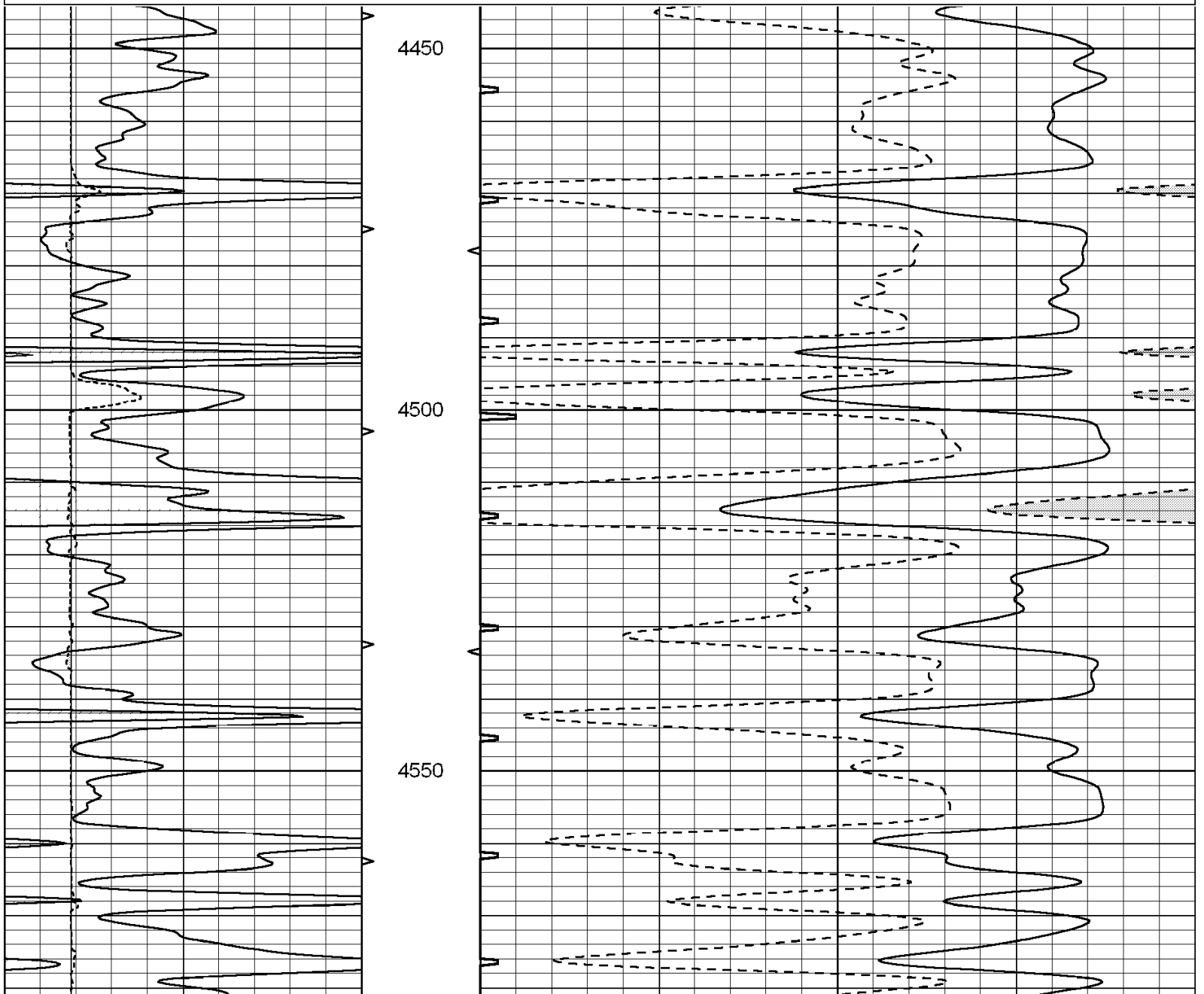


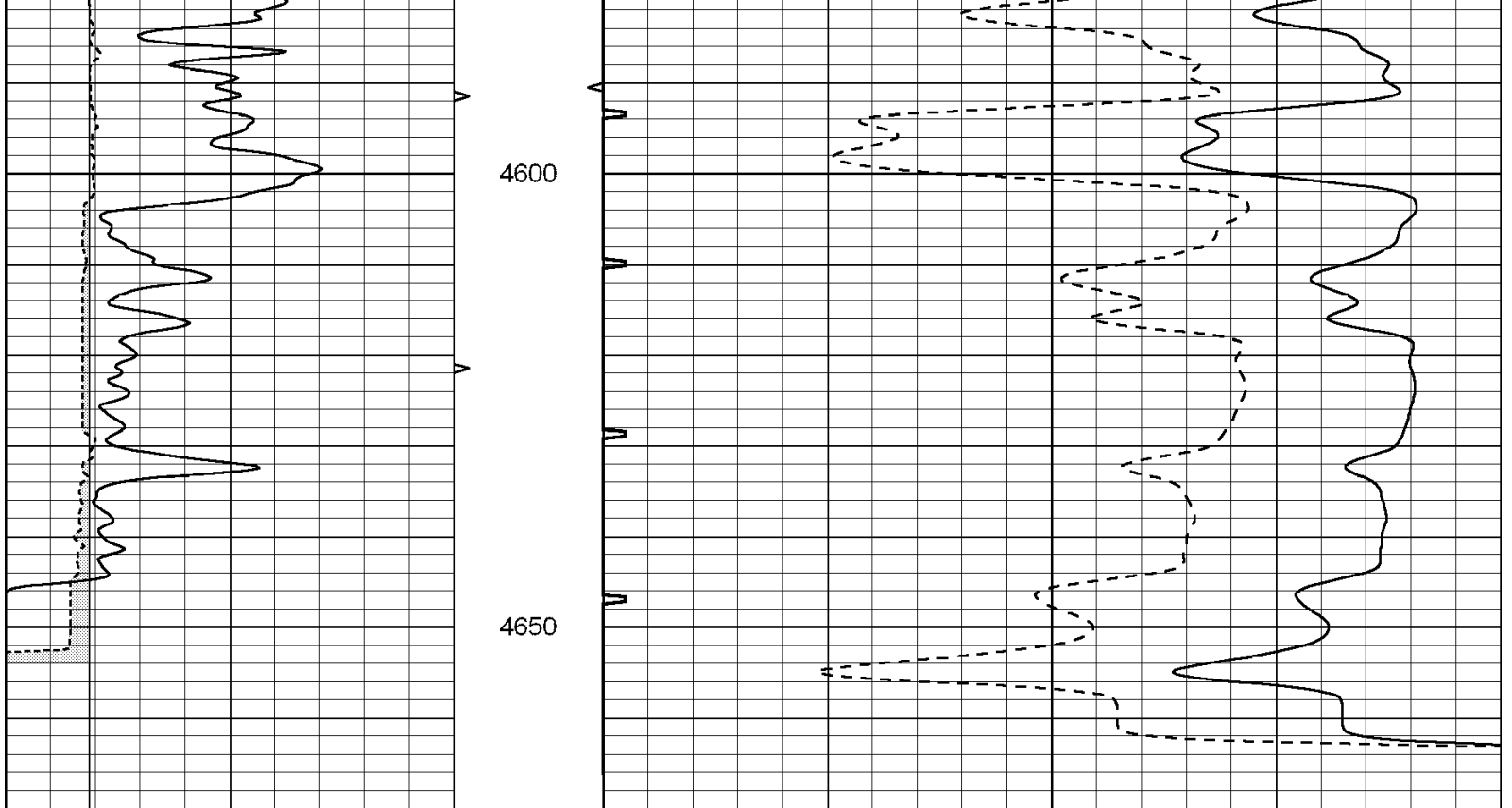
SUPERIOR
Hays,
Kansas

REPEAT SECTION

Database File: 003072ddn.db
 Dataset Pathname: pass5.1
 Presentation Format: _slt
 Dataset Creation: Thu Feb 26 21:56:46 2009 by Calc Open-Cased 070814
 Charted by: Depth in Feet scaled 1:240

0	GAMMA RAY (GAPI)	150	ABHV	140	DELTA TIME (usec/ft)	40	
6	CALIPER (in)	16	10 (ft3)	0	30	SONIC POROSITY (pu)	-10
			TBHV	0	ITT (msec)	20	
			0 (ft3)	10			





0	GAMMA RAY (GAPI)	150	ABHV	140	DELTA TIME (usec/ft)	40
6	CALIPER (in)	16	10 (ft3) 0	30	SONIC POROSITY (pu)	-10
			TBHV	0	ITT (msec)	20
			0 (ft3) 10			