



Dual Induction Log

DIGITAL LOG (785) 625-3858

15-179-21221-00-00

API No.

Company **A&A Production**

Well **Breeden No 1**

Field **Unknown**

County **Sheridan** State **Kansas**

Location **NE - SW - SW - SE
350' FSL & 2290' FEL**

Sec: **25** Twp: **9 S** Rge: **26 W**

Permanent Datum **Ground Level** Elevation **2619**

Log Measured From **Kelly Bushing** 5 Ft. Above Perm. Datum

Drilling Measured From **Kelly Bushing**

Other Services
CNL/CDL
MEL

Elevation

K.B. 2624
D.F. 2619
G.L. 2619

Date **1/27/2009**

Run Number **One**

Depth Driller **4150**

Depth Logger **4156**

Bottom Logged Interval **4155**

Top Log Interval **200**

Casing Driller **8.625 @ 233**

Casing Logger **233**

Bit Size **7.875**

Type Fluid in Hole **Chemical**

Salinity, ppm CL **6.000**

Density / Viscosity **9.3 73**

pH / Fluid Loss **7.5 10.6**

Source of Sample **Flowline**

Rm @ Meas. Temp **0.90 @ 50**

Rmf @ Meas. Temp **0.68 @ 50**

Rmc @ Meas. Temp **1.22 @ 50**

Source of Rmf / Rmc **Charts**

Rm @ BHT **0.38 @ 118**

Operating Rig Time **4 Hours**

Max Rec. Temp. F **118**

Equipment Number **15**

Location **Hays**

Recorded By **B. Becker**

Witnessed By **Mark Torr**

<<< Fold Here >>>

All interpretations are opinions based on inferences from electrical or other measurements and we cannot and do not guarantee the accuracy or correctness of any interpretation, and we shall not, except in the case of gross or willful negligence on our part, be liable or responsible for any loss, costs, damages, or expenses incurred or sustained by anyone resulting from any interpretation made by any of our officers, agents or employees. These interpretations are also subject to our general terms and conditions set out in our current Price Schedule.

Comments

Thank you for using Log-Tech, Inc.
(785) 625-3858

Wakeeney, Ks; North to Red Line Rd;
West to "STOP" sign (St. Peter blacktop);
3-1/2 West, North Into

Database File: andersonhd.db
Dataset Pathname: Breeden1/DIL/@00000e60
Presentation Format: dil2in
Dataset Creation: Tue Jan 27 22:03:55 2009
Charted by: Depth in Feet scaled 1:600

0	Gamma Ray	150
-200	SP	0

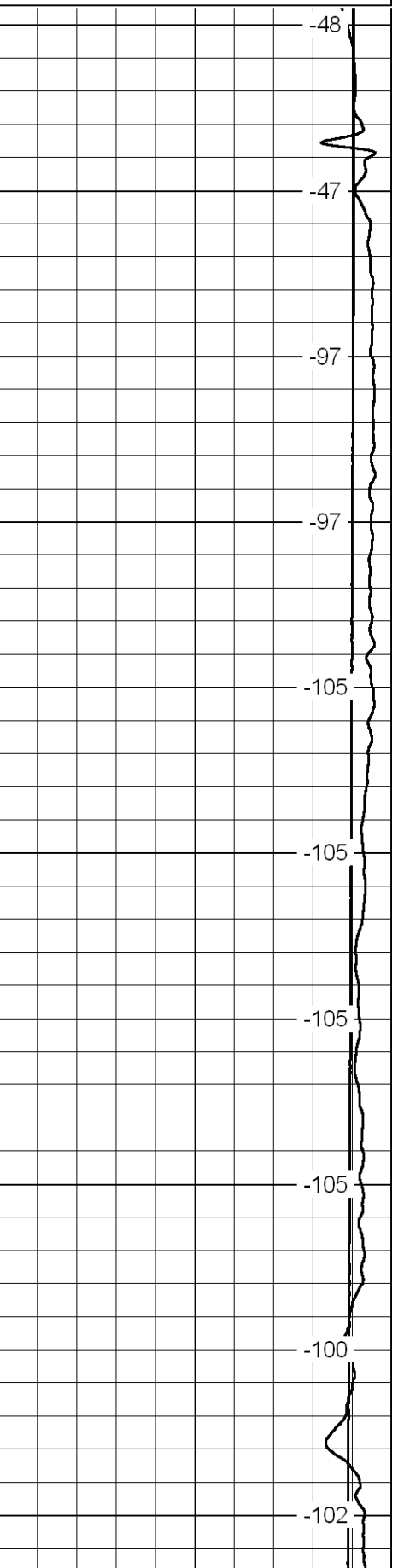
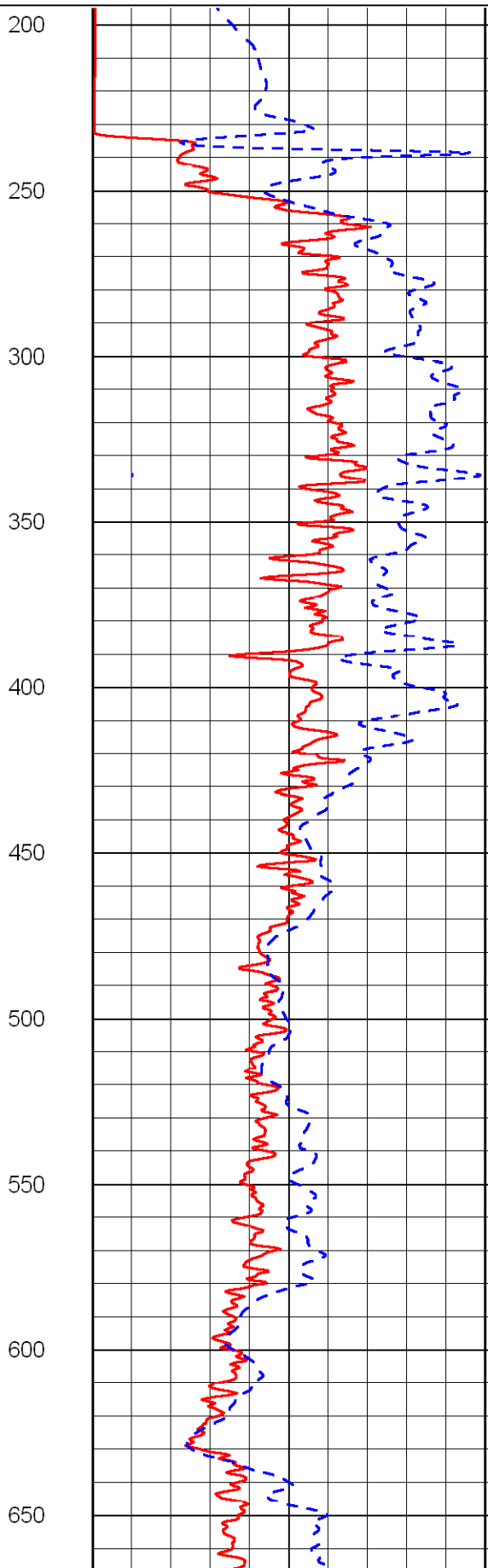
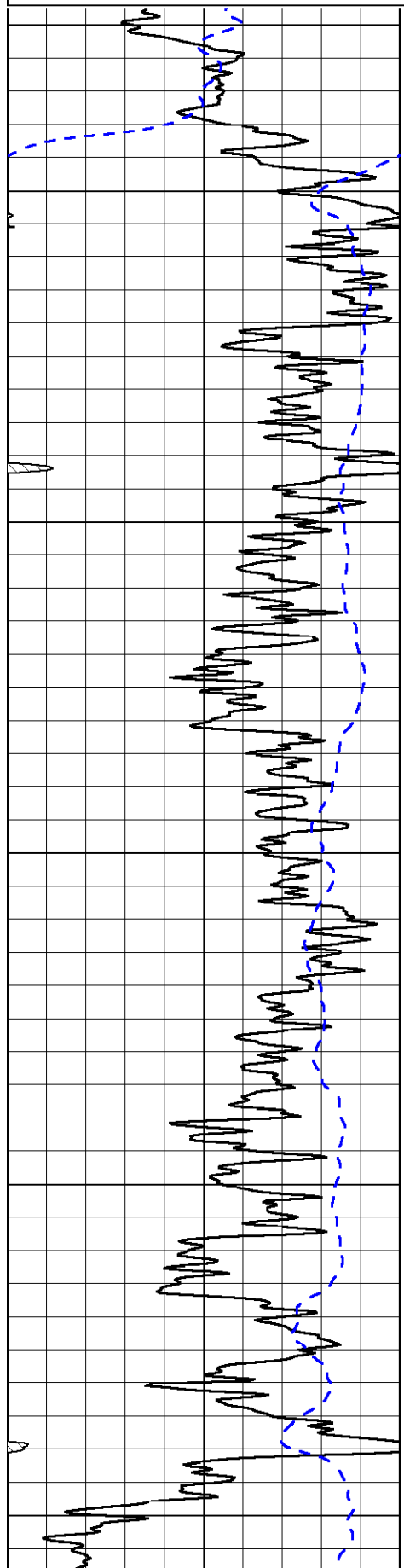
0	Shallow Resistivity	50
0	Deep Resistivity	50

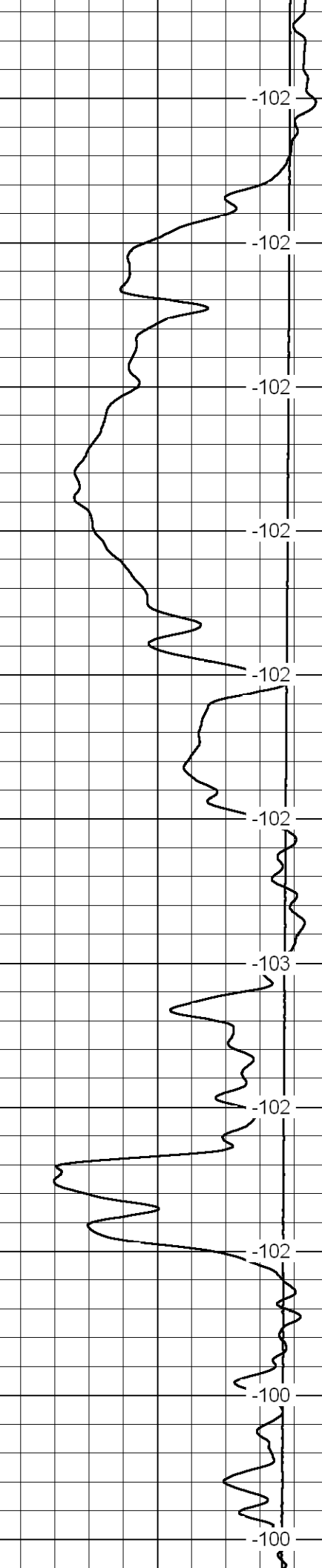
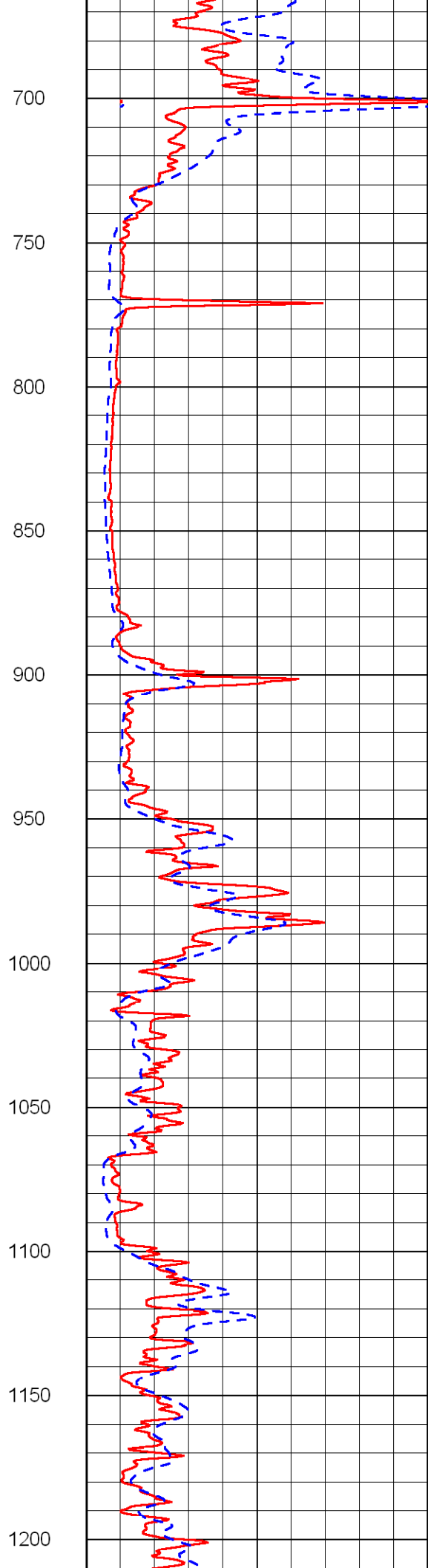
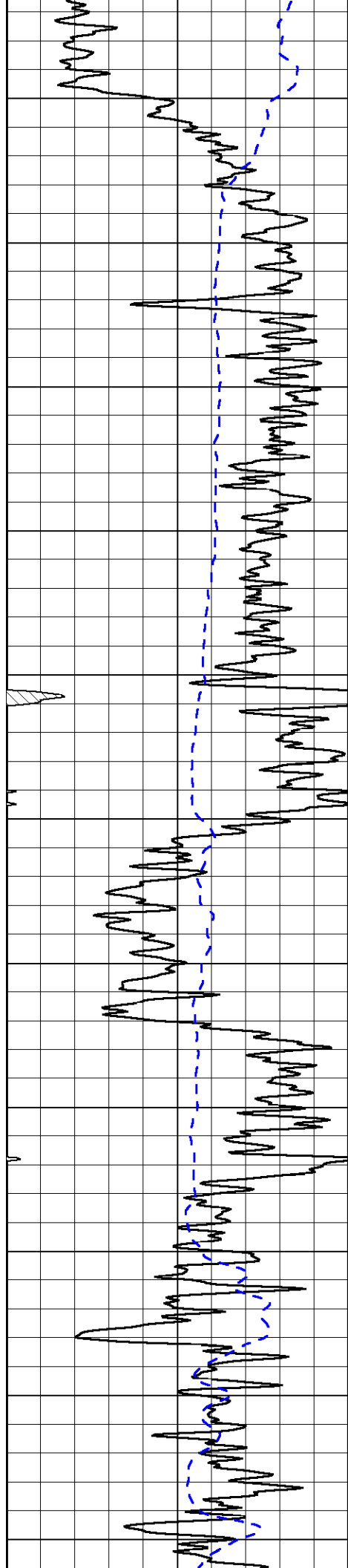
LSPD

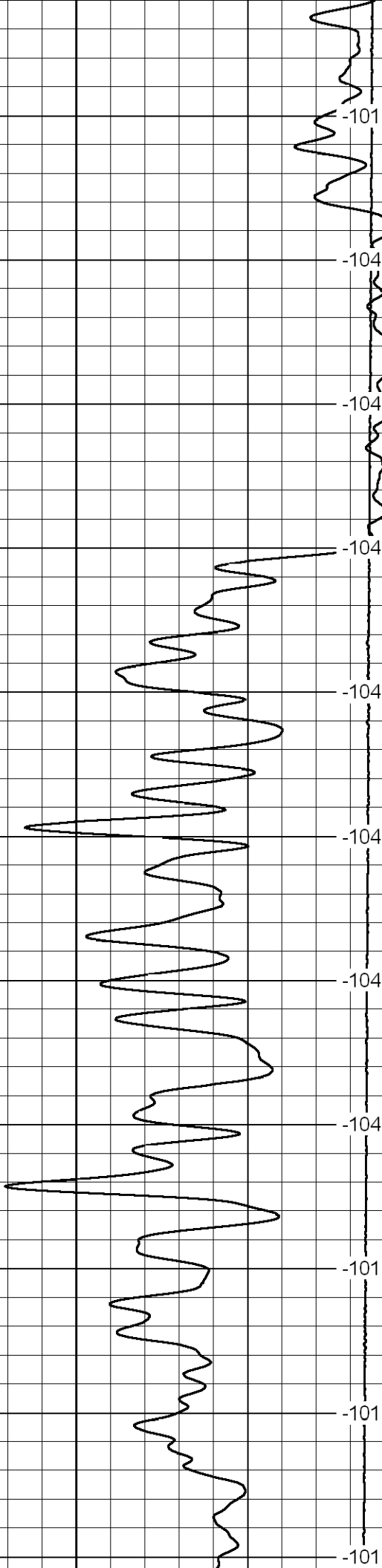
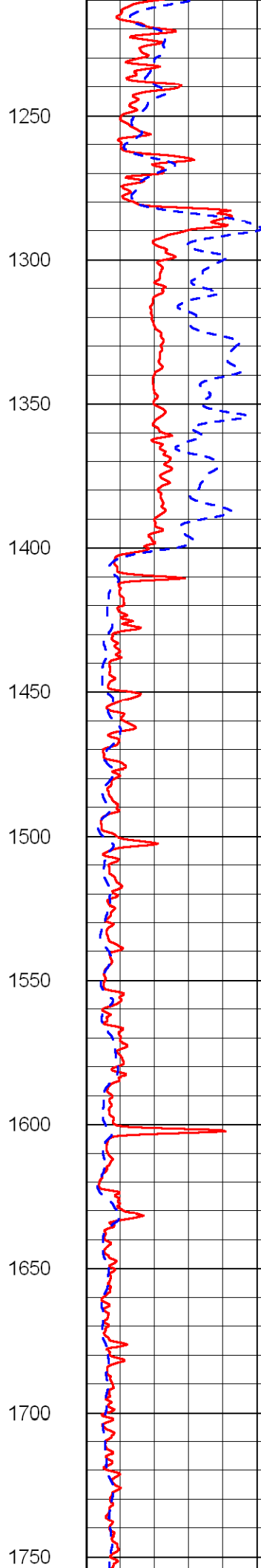
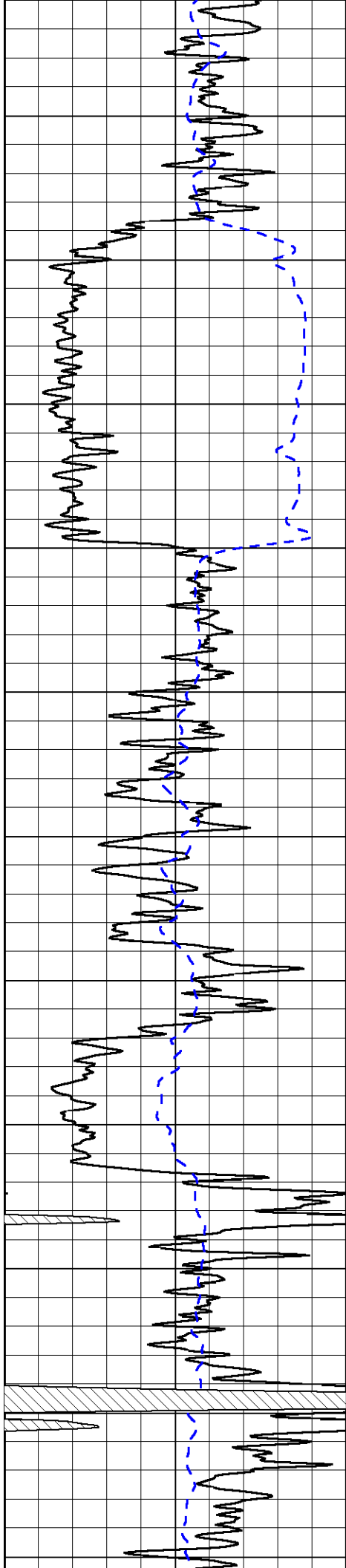
1000	Conductivity	0
------	--------------	---

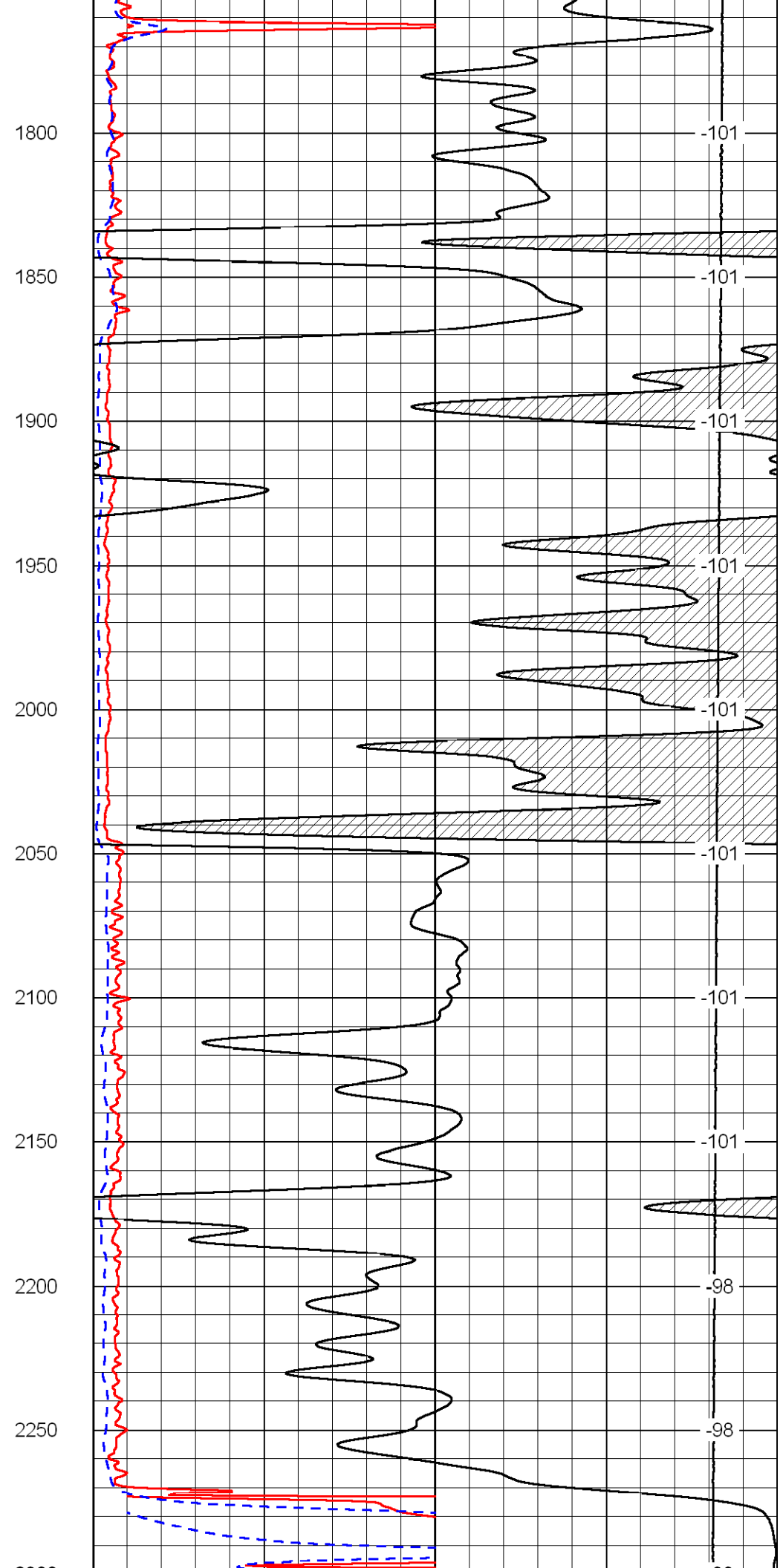
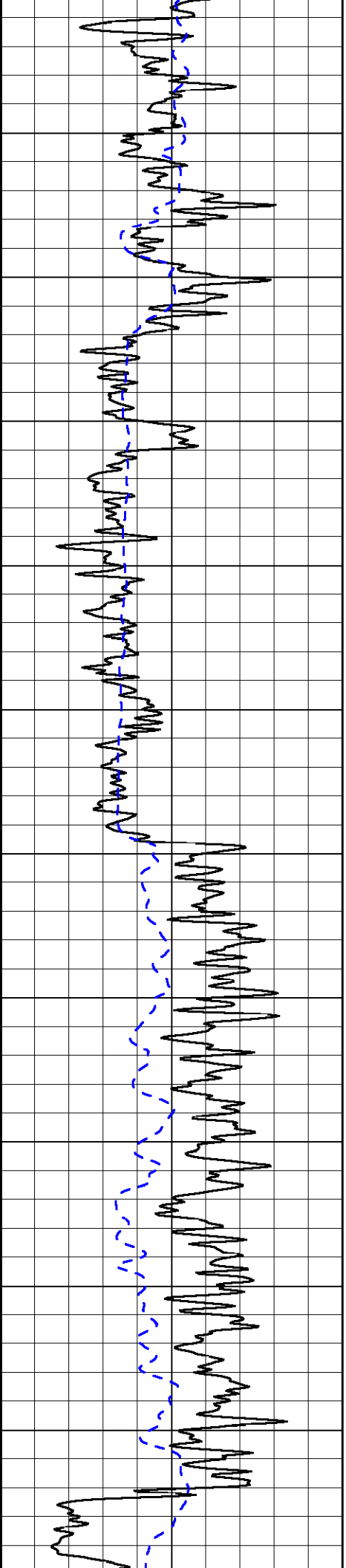
15000	Line Tension	0
-------	--------------	---

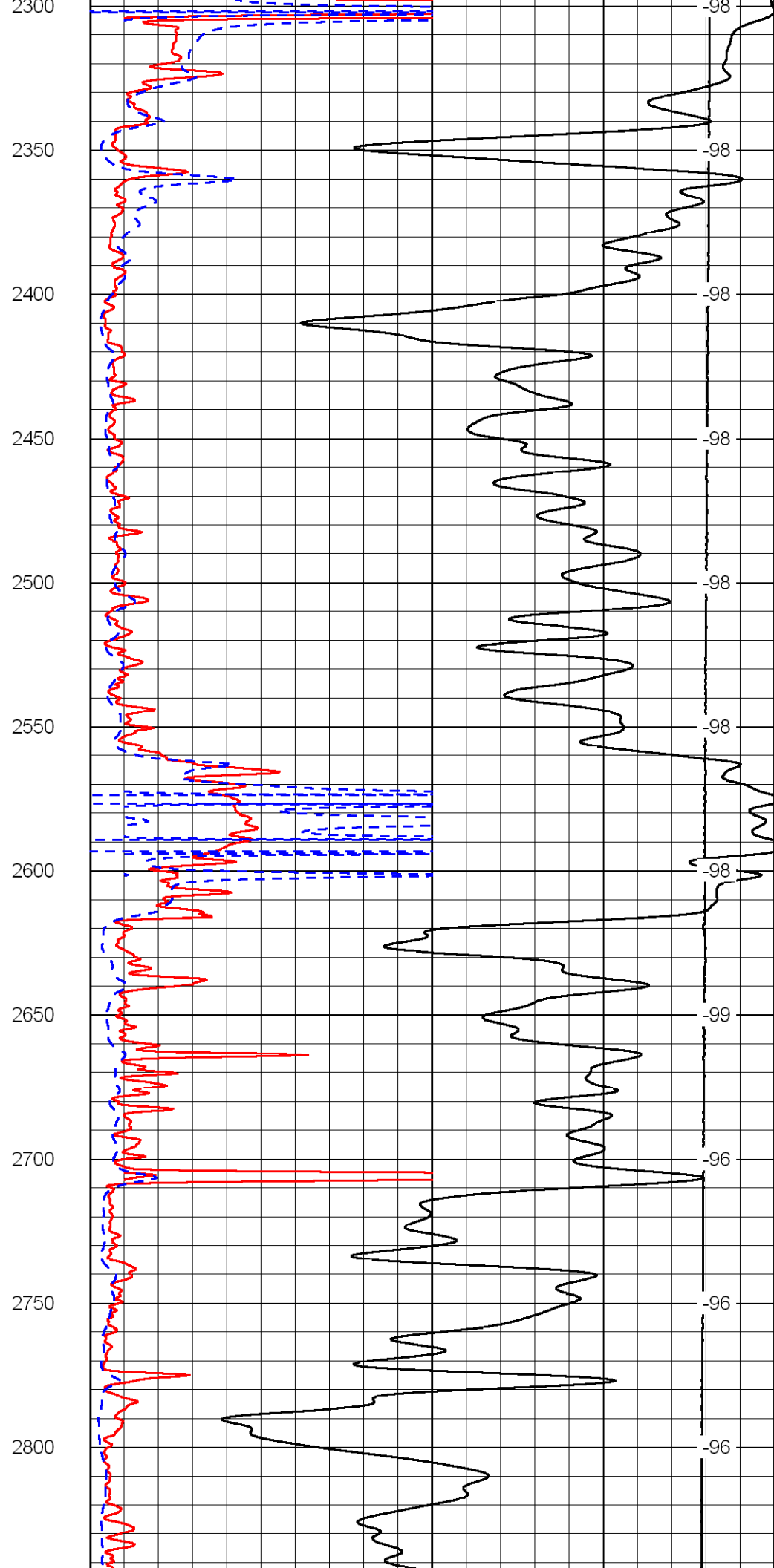
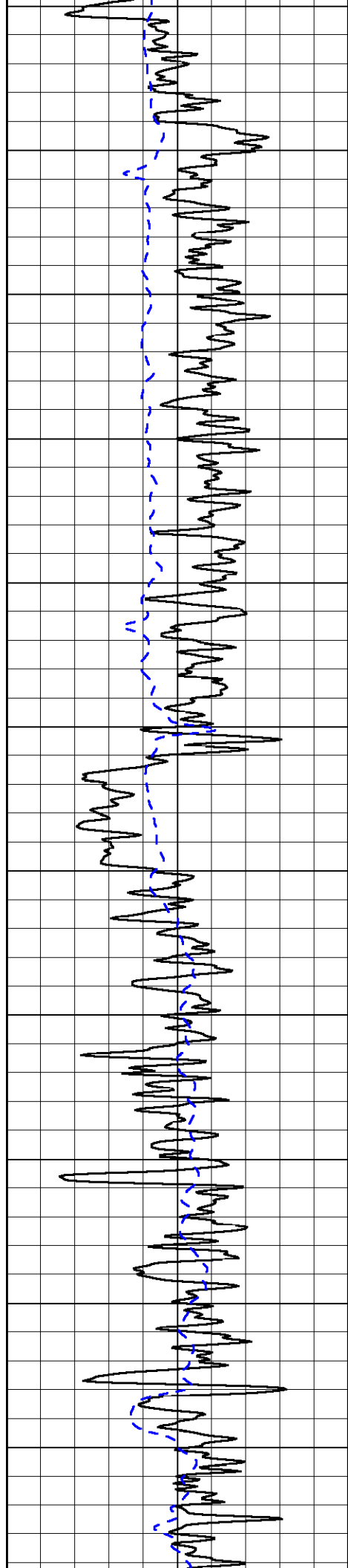
50	Shallow Resistivity	500
50	Deep Resistivity	500

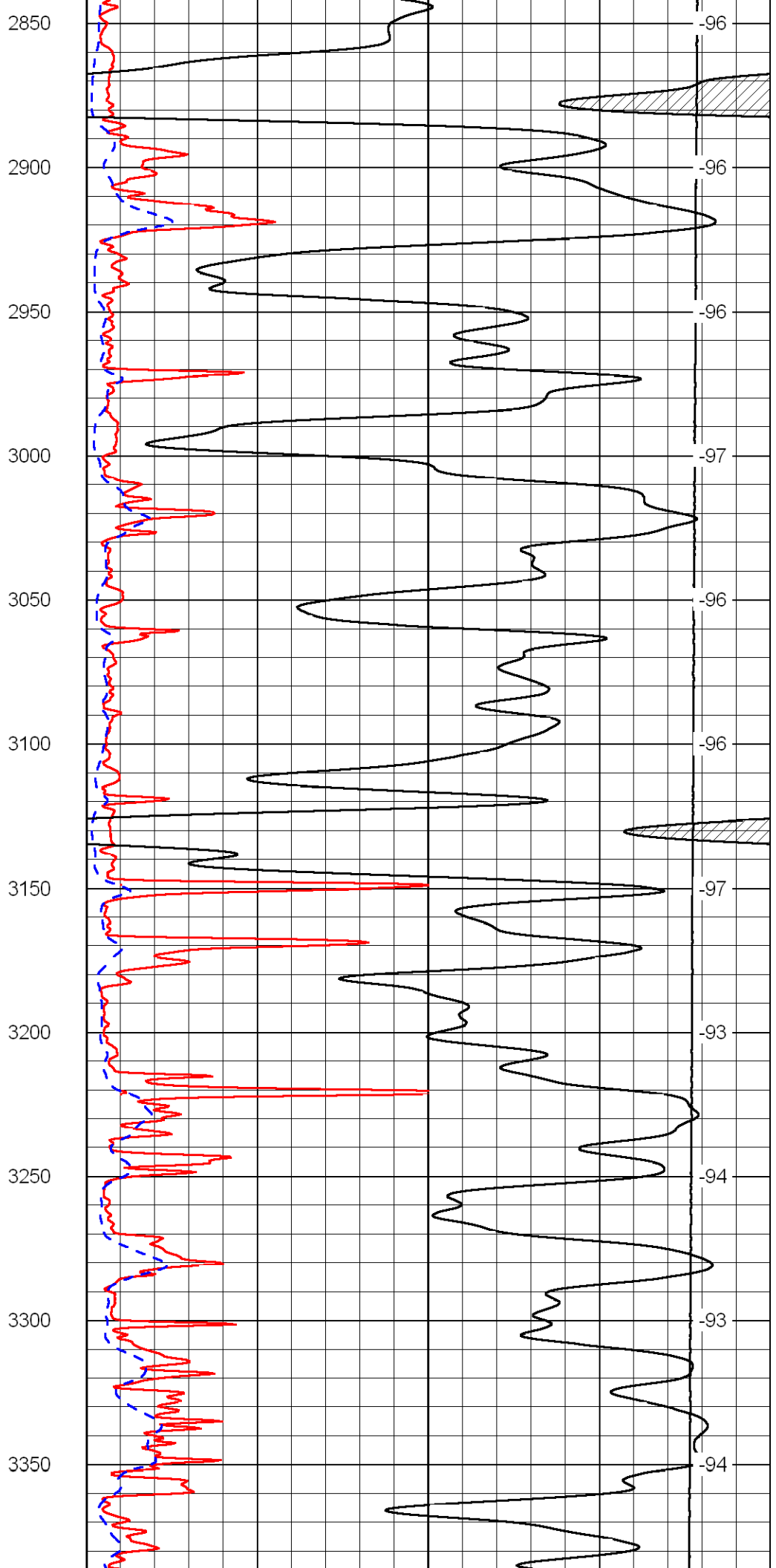
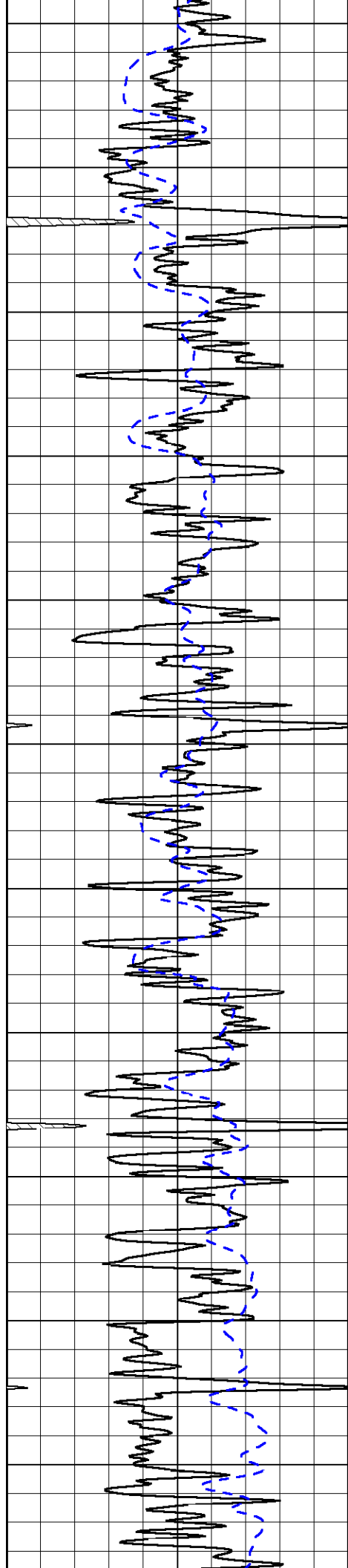


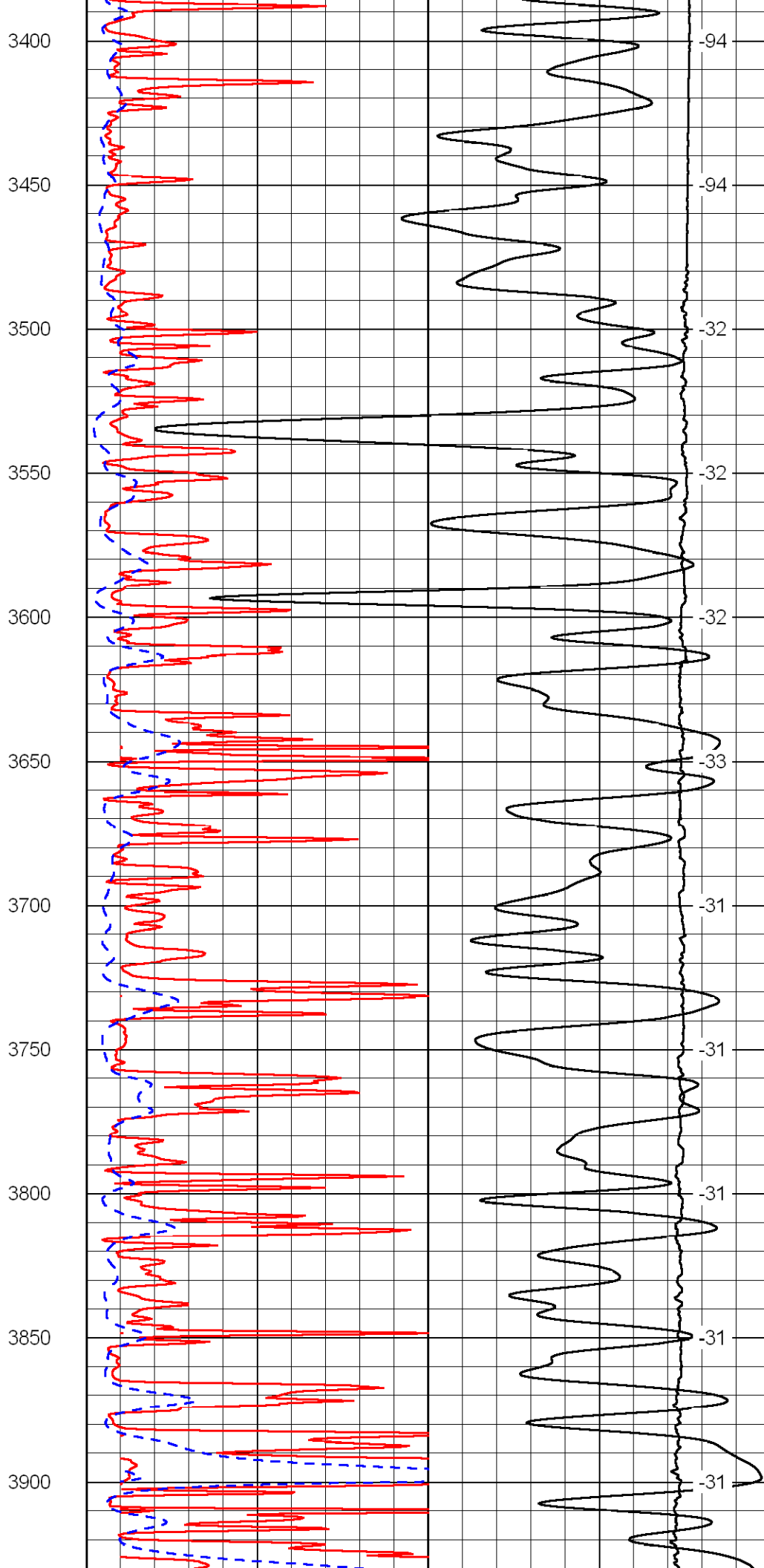
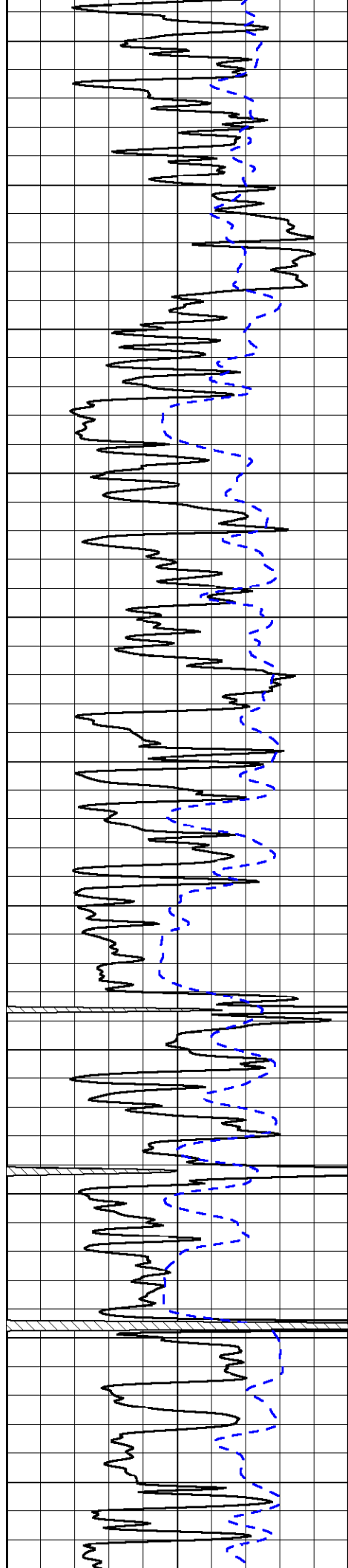


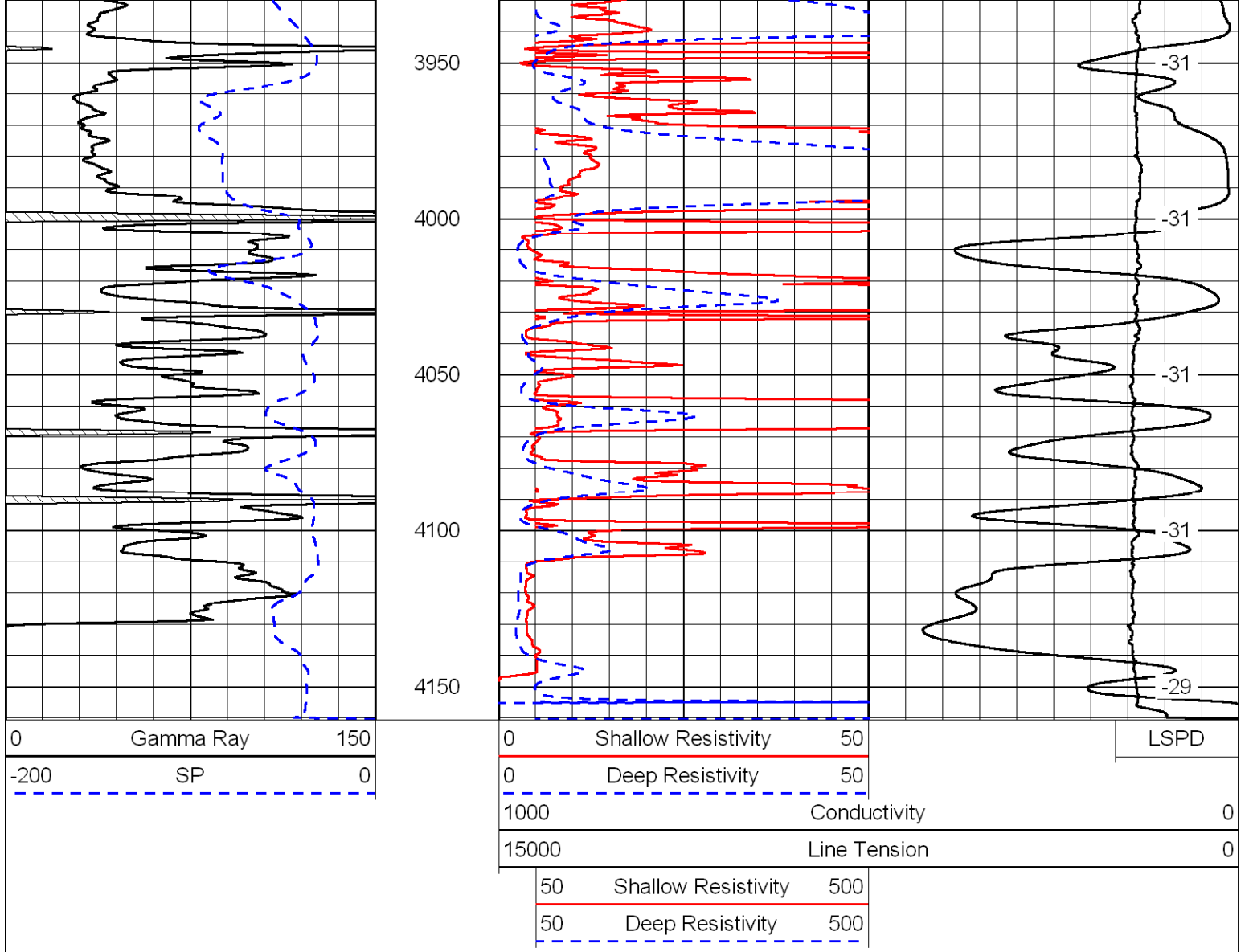




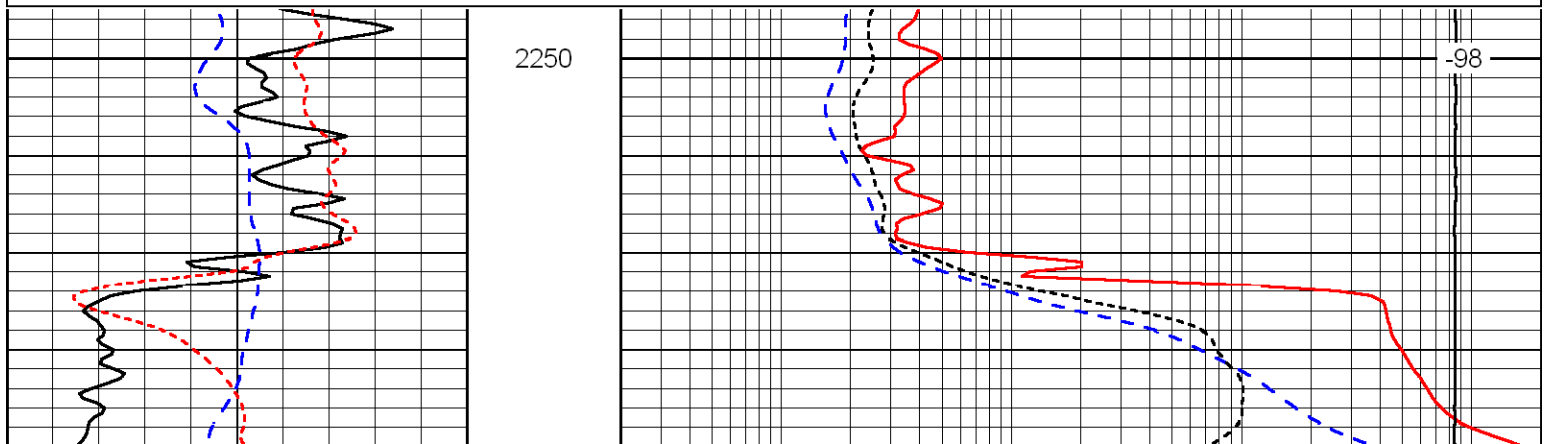
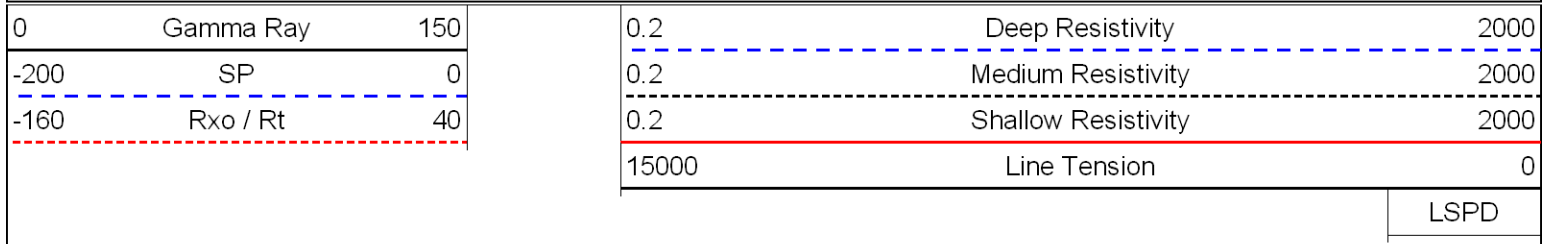


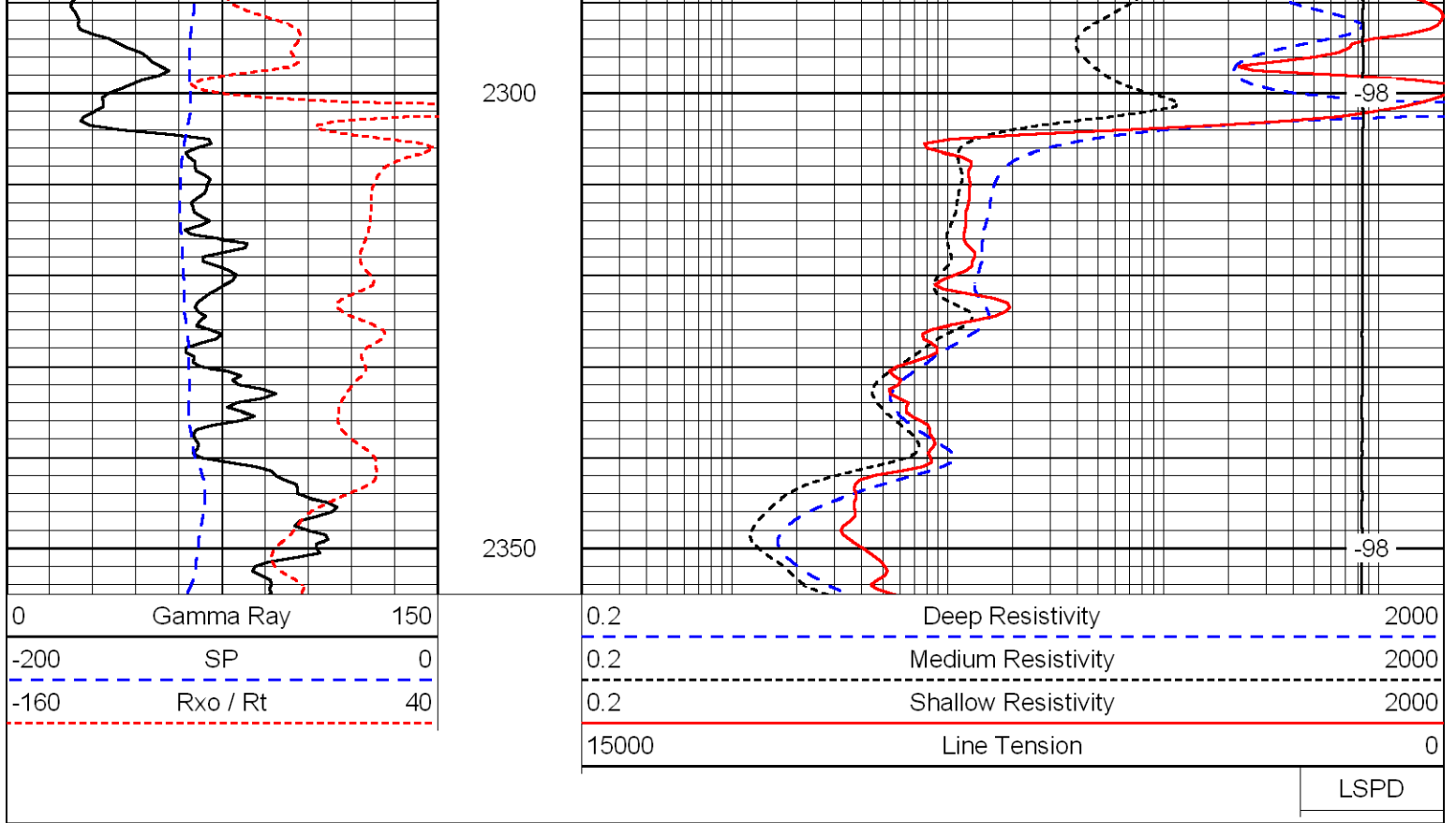




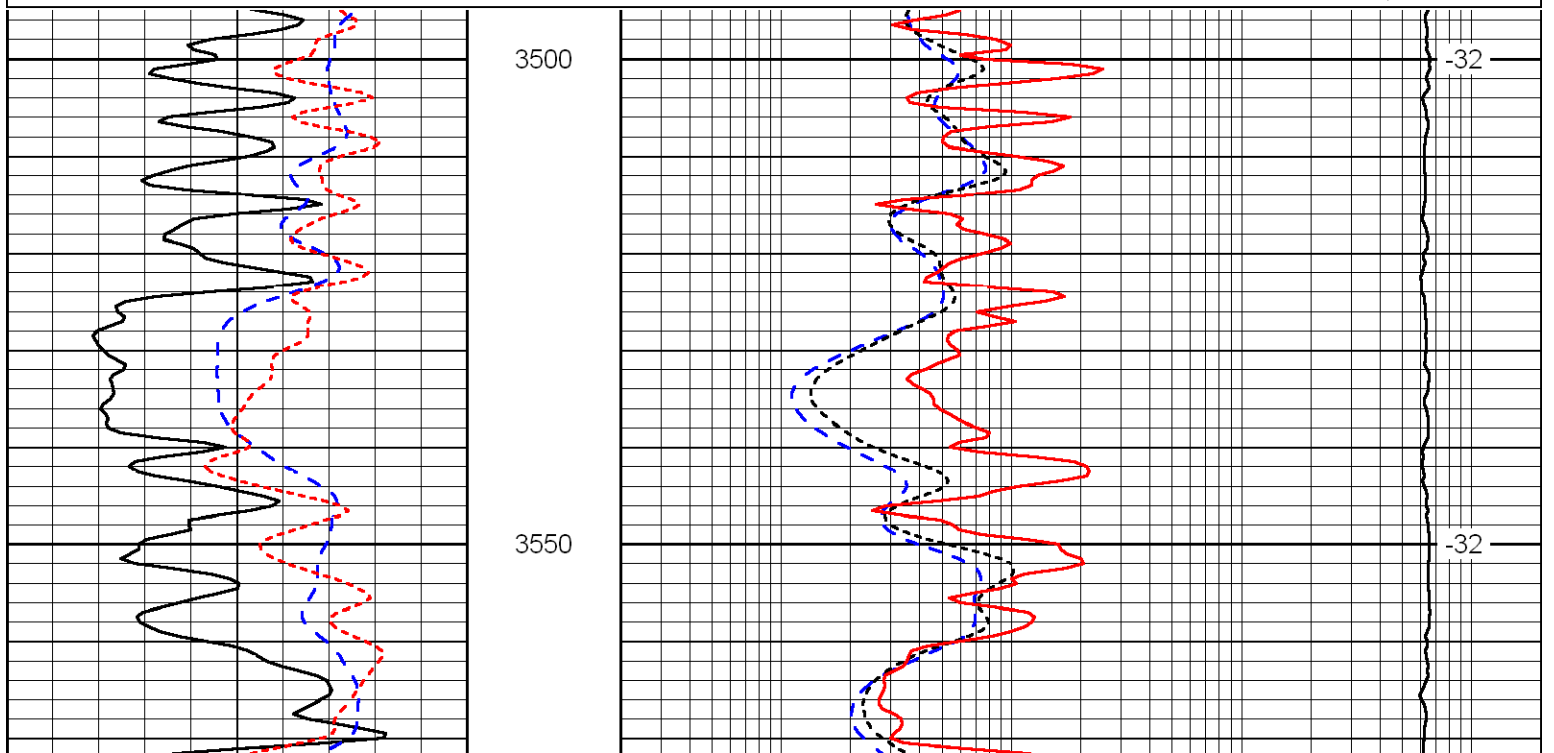
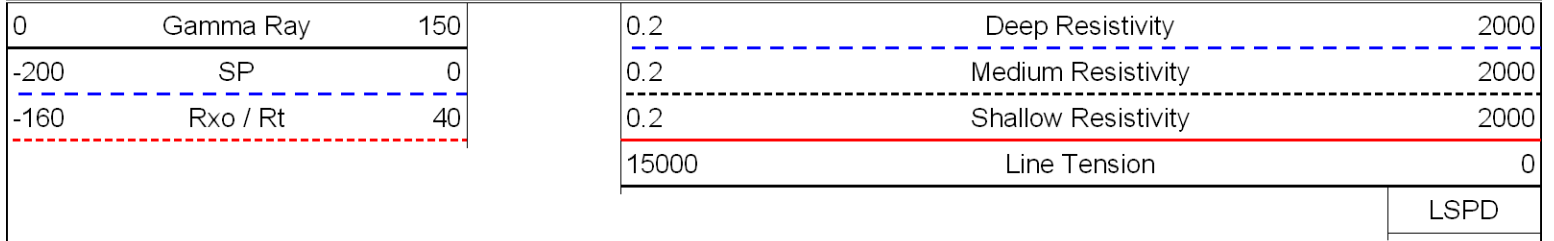


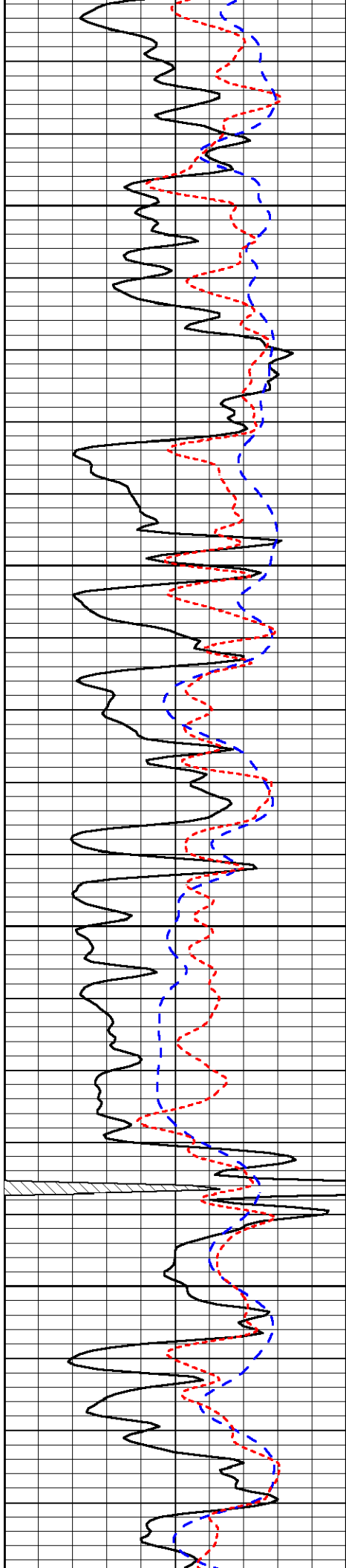
Database File: andersonhd.db
 Dataset Pathname: Breeden1/DIL/@00000e60
 Presentation Format: dil
 Dataset Creation: Tue Jan 27 22:03:55 2009
 Charted by: Depth in Feet scaled 1:240





Database File: andersonhd.db
 Dataset Pathname: Breeden1/DIL/@00000e60
 Presentation Format: dil
 Dataset Creation: Tue Jan 27 22:03:55 2009
 Charted by: Depth in Feet scaled 1:240



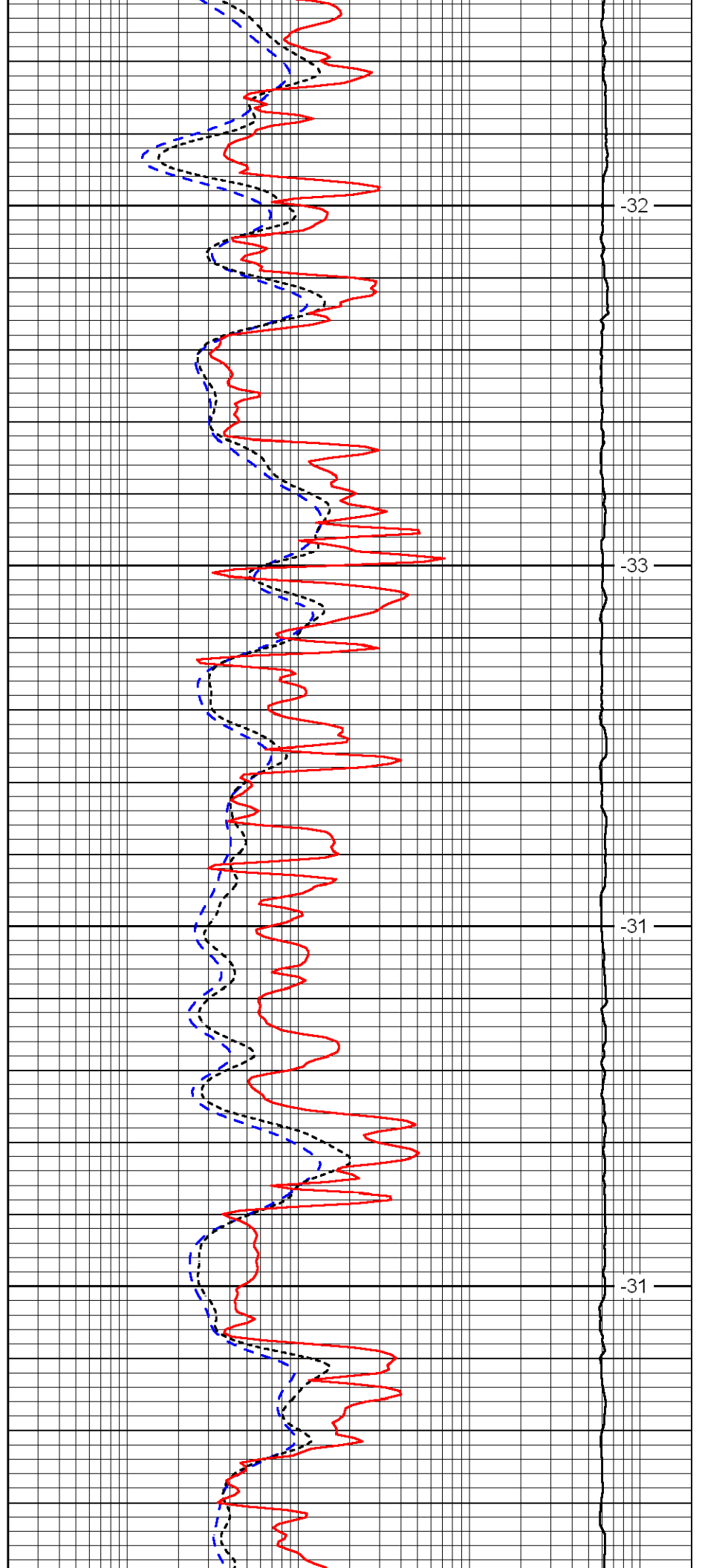


3600

3650

3700

3750

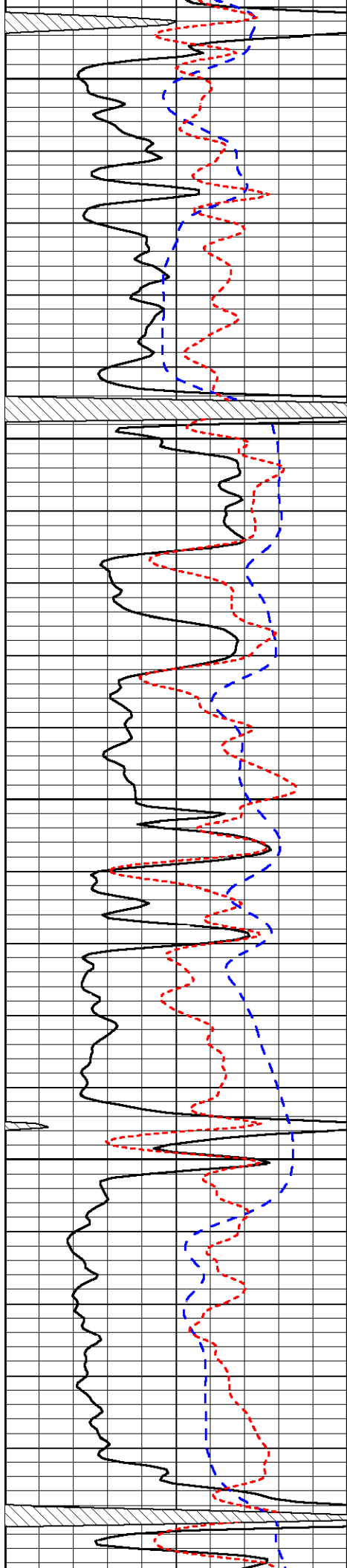


-32

-33

-31

-31



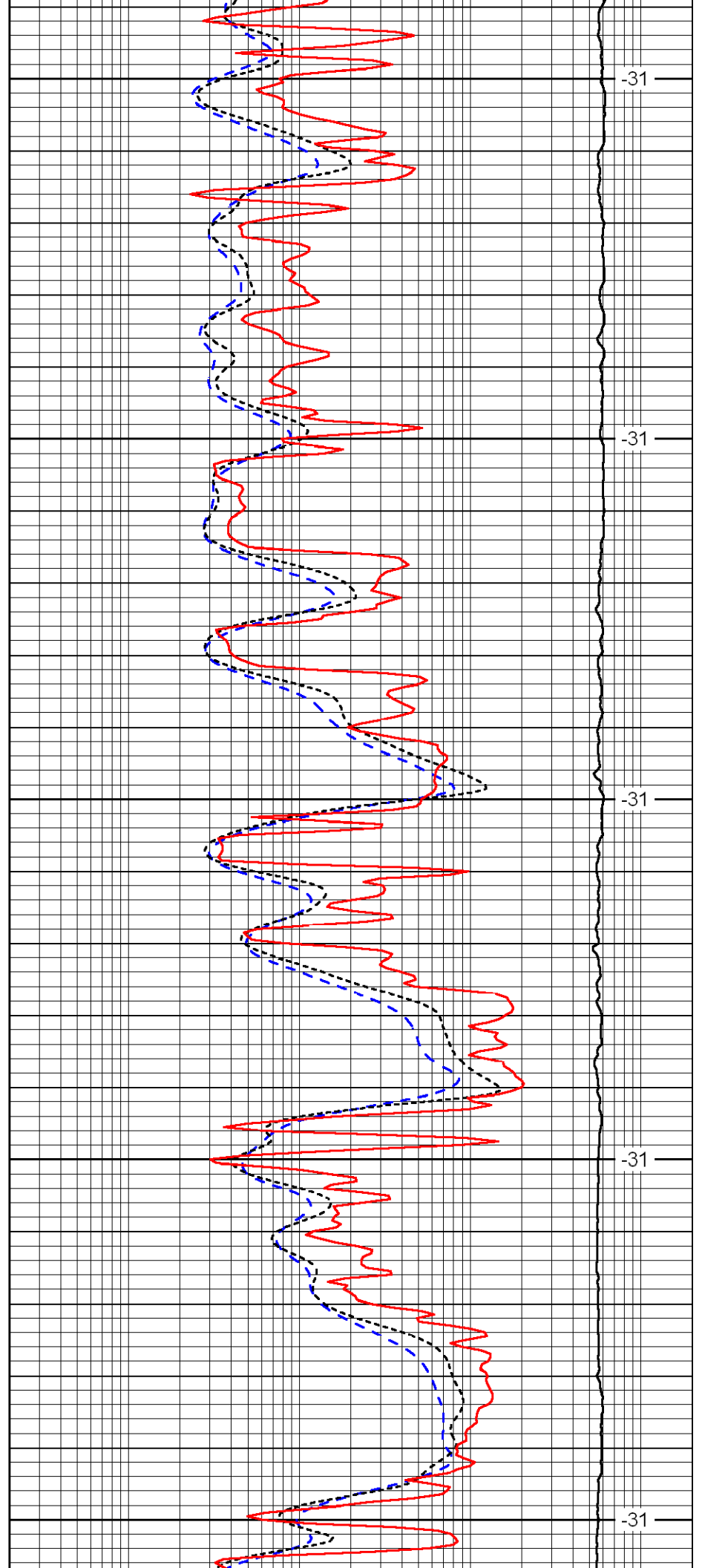
3800

3850

3900

3950

4000



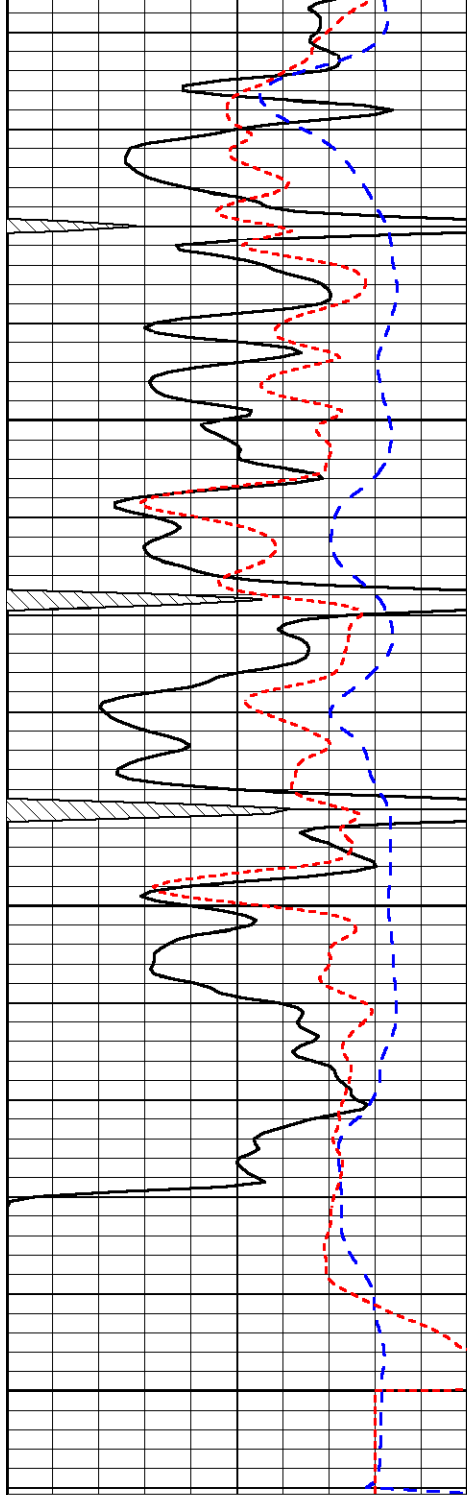
-31

-31

-31

-31

-31

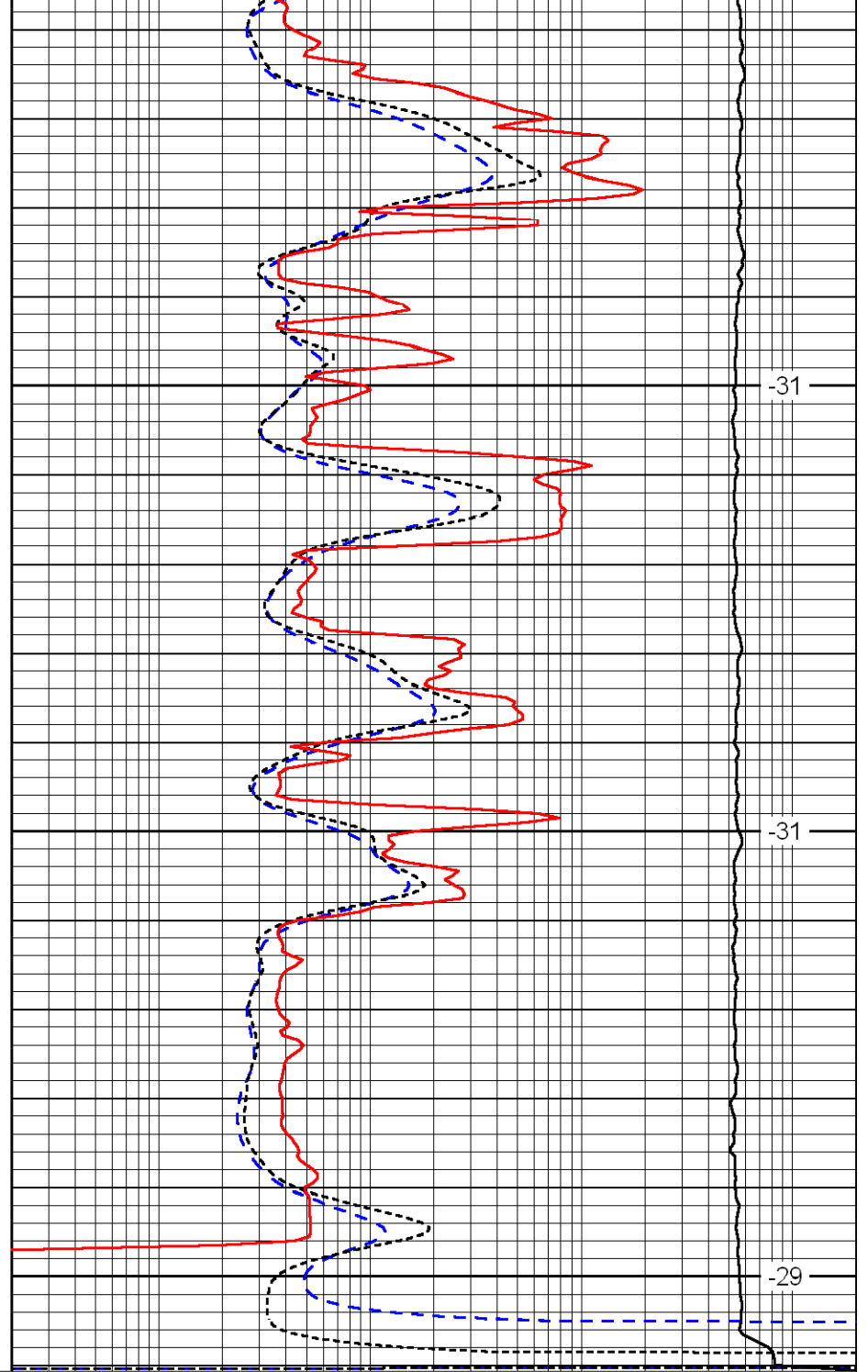


4050

4100

4150

0	Gamma Ray	150
-200	SP	0
-160	Rxo / Rt	40



-31

-31

-29

0.2	Deep Resistivity	2000
0.2	Medium Resistivity	2000
0.2	Shallow Resistivity	2000
15000	Line Tension	0

LSPD