



Microresistivity Log

DIGITAL LOG (785) 625-3858

API No. 15-063-21,762-00-00	Company H & M Petroleum Corporation	
	Well Bonita Springs No.1	
	Field Bonita Springs	
	County Gove	State Kansas
	Location SE SW NW SW 1420' FSL & 400' FWL	Other Services CNL/CDL DIL
	Sec: 7 Twp: 12S Rge: 30W	Elevation K.B. 2915 D.F. 2910 G.L. 2910
Permanent Datum Log Measured From Drilling Measured From	Ground Level Kelly Bushing Frotkelly Bushing	Elevation 2910 5 Ft. Above Perm. Datum

Date	12/19/2008
Run Number	Two
Depth Driller	4680
Depth Logger	4678
Bottom Logged Interval	4677
Top Log Interval	3600
Casing Driller	8.62 @ 221
Casing Logger	217
Bit Size	7.875
Type Fluid in Hole	Chemical
Salinity, ppm CL	3,100
Density / Viscosity	9.3 60
pH / Fluid Loss	11.0 6.8
Source of Sample	Flowline
Rm @ Meas. Temp	.7 @ 52
Rmf @ Meas. Temp	.53 @ 52
Rmc @ Meas. Temp	.95 @ 52
Source of Rmf / Rmc	Charts
Rm @ BHT	.29 @ 125
Operating Rig Time	4 Hours
Max Rec. Temp. F	125
Equipment Number	17
Location	Hays
Recorded By	C. Desaire
Witnessed By	Randy Say

<<< Fold Here >>>

All interpretations are opinions based on inferences from electrical or other measurements and we cannot and do not guarantee the accuracy or correctness of any interpretation, and we shall not, except in the case of gross or willful negligence on our part, be liable or responsible for any loss, costs, damages, or expenses incurred or sustained by anyone resulting from any interpretation made by any of our officers, agents or employees. These interpretations are also subject to our general terms and conditions set out in our current Price Schedule.

Comments

Thank you for using Log-Tech, Inc.
(785) 625-3858

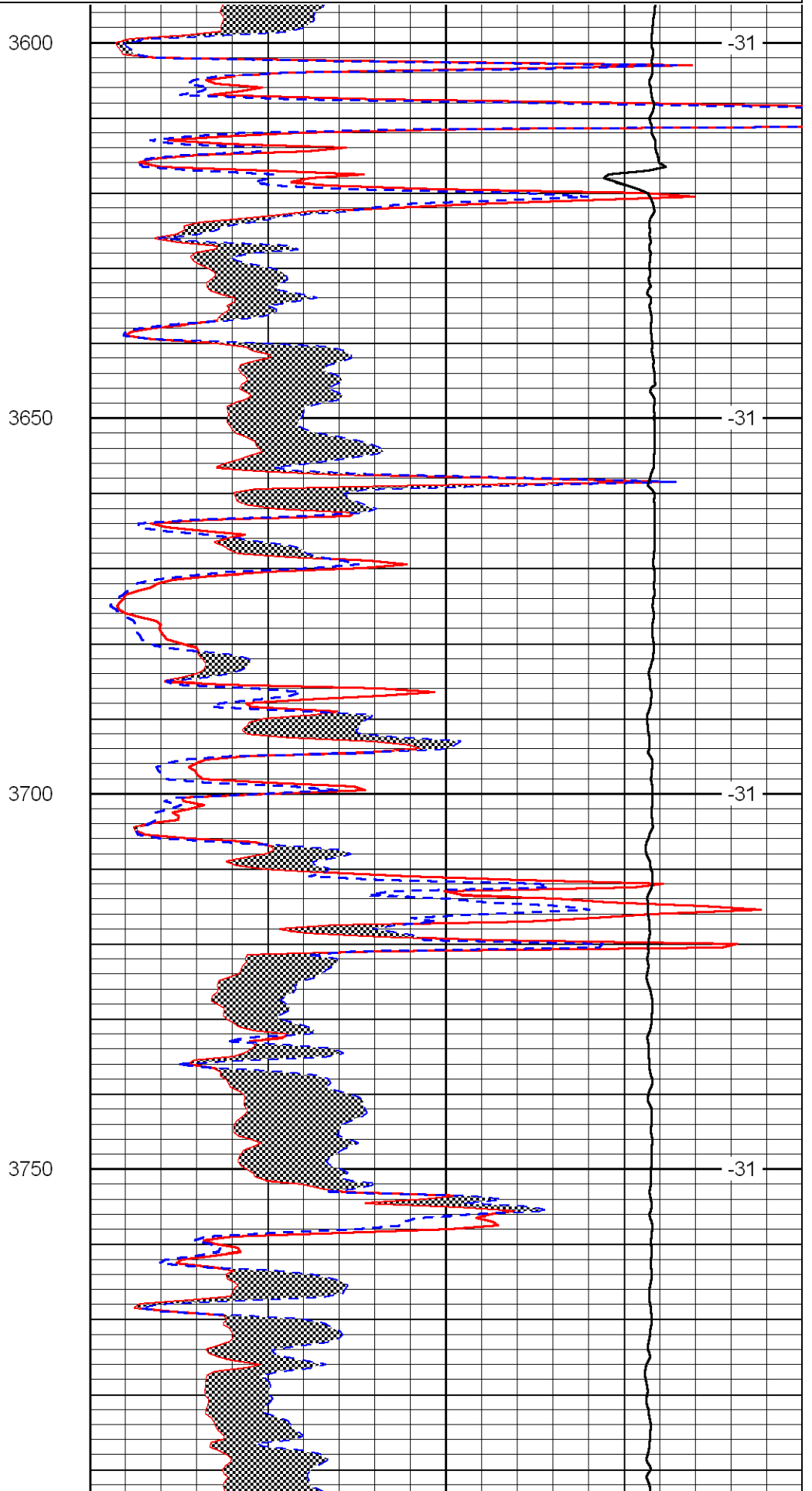
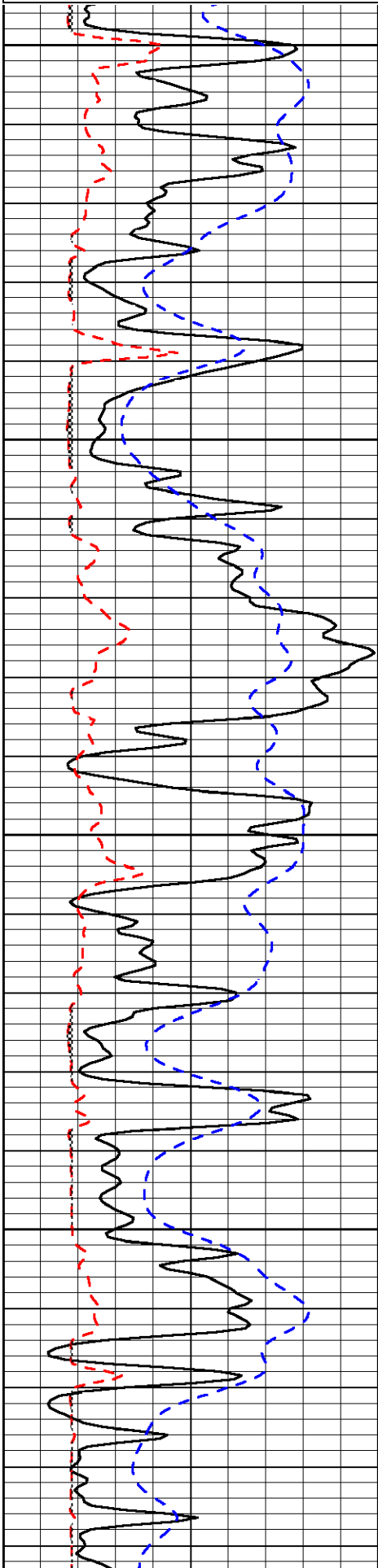
Campus, 6 1/2 S to W Rd,
2 E, N Into

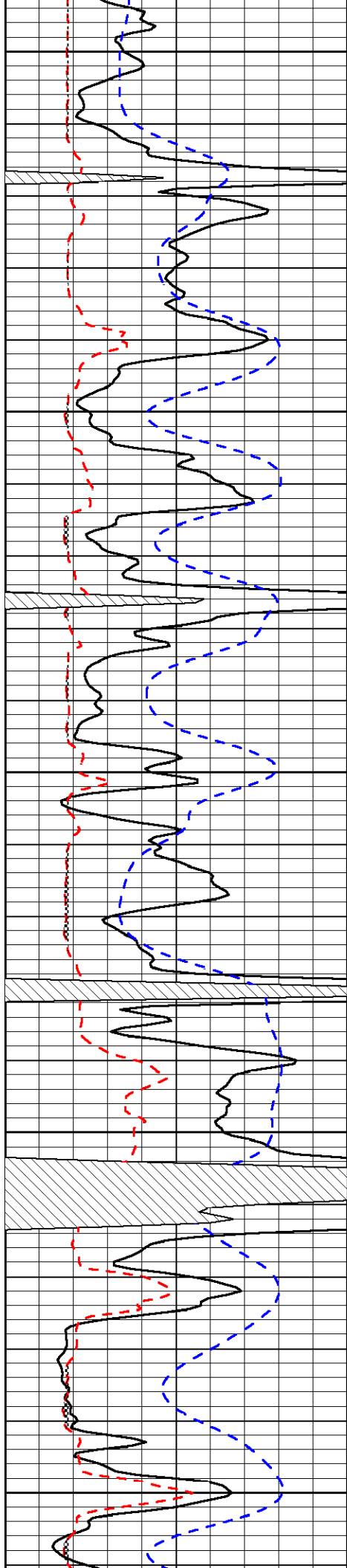
Database File: c:\warrior\data\h&m_bonita springs no.1\h&m2hd.db
 Dataset Pathname: dil/h&mstack
 Presentation Format: micro
 Dataset Creation: Fri Dec 19 19:40:26 2008
 Charted by: Depth in Feet scaled 1:240

0	Gamma Ray	150
6	Micro Log Caliper (GAPI)	16
-200	SP	0

0	Micro Inverse 1 X 1	40
0	Micro Normal 2"	40
10000	Line Weight	0

LSPD





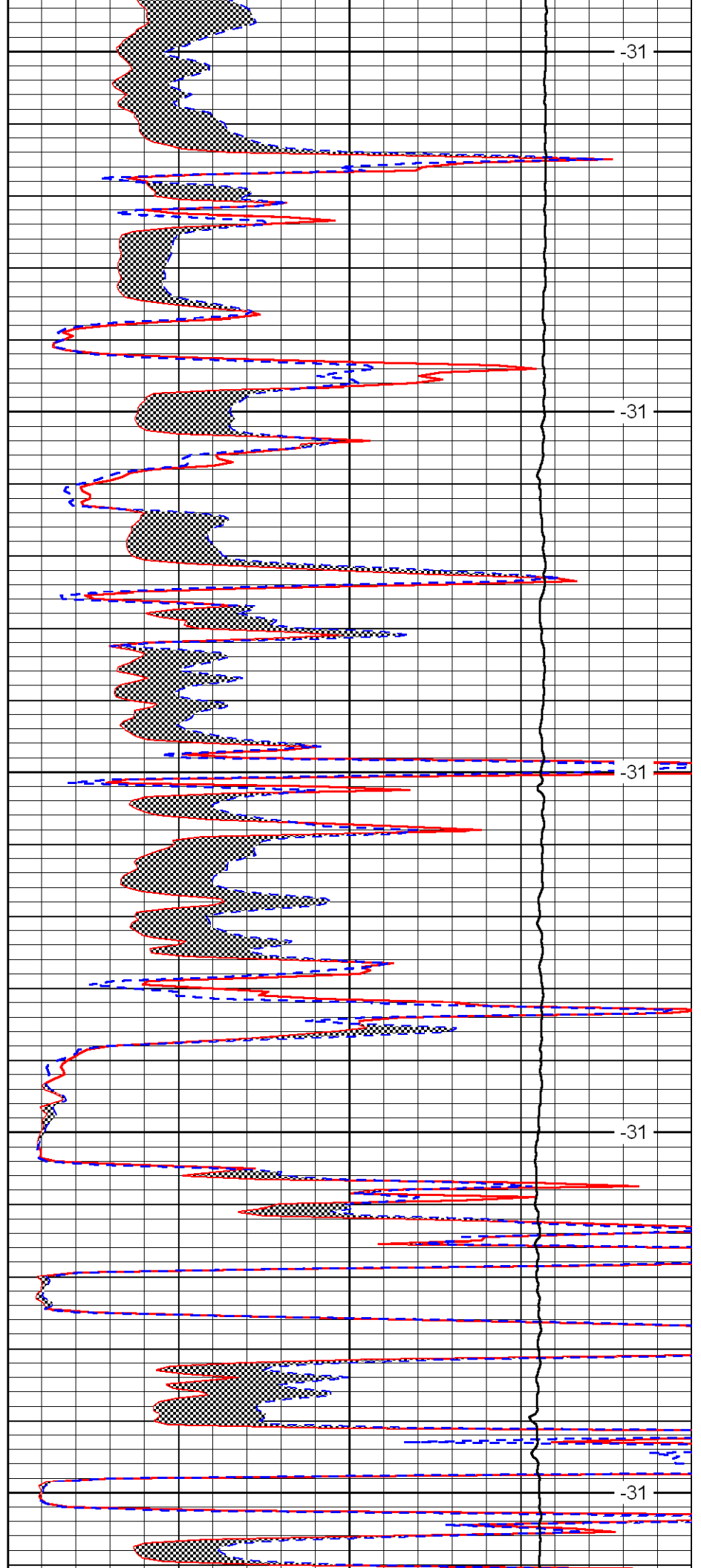
3800

3850

3900

3950

4000



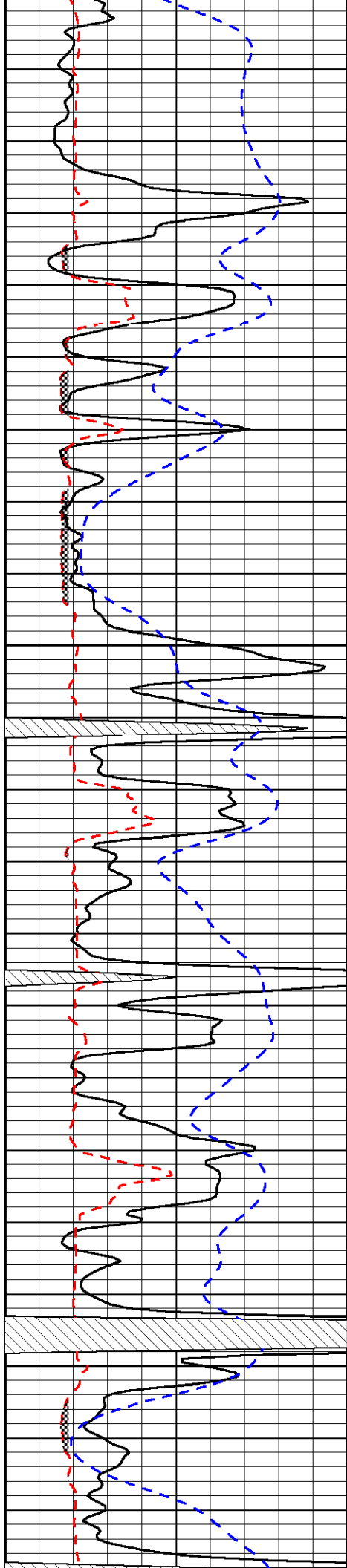
-31

-31

-31

-31

-31

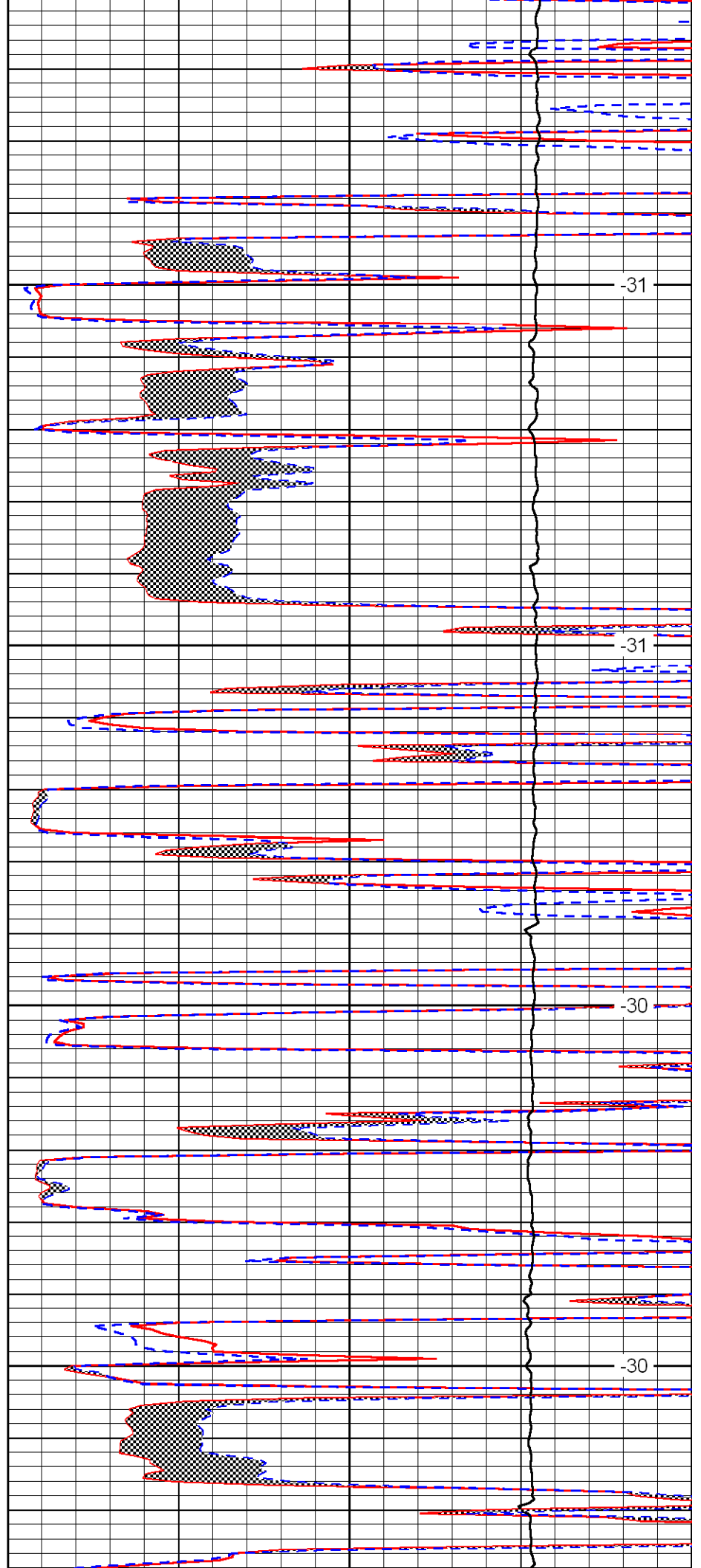


4050

4100

4150

4200

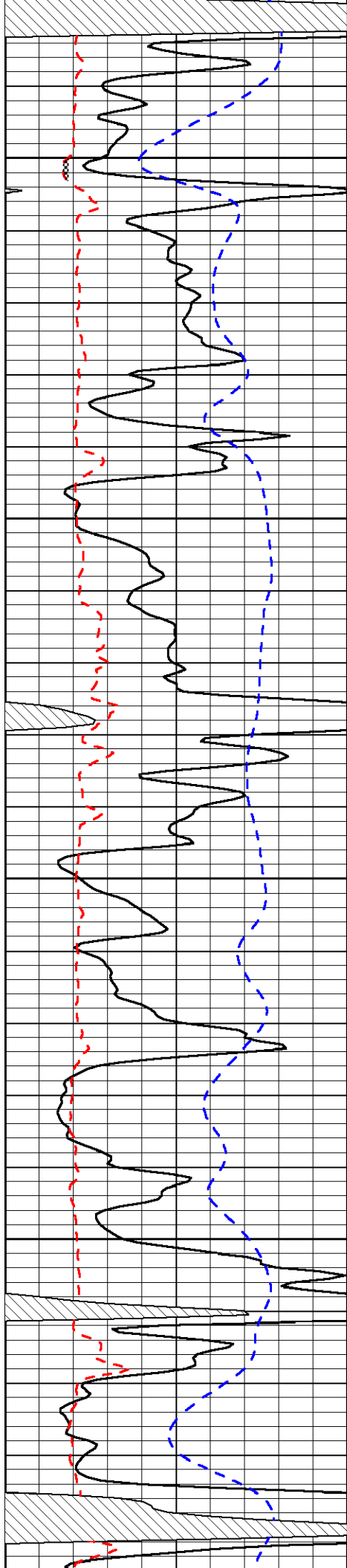


-31

-31

-30

-30

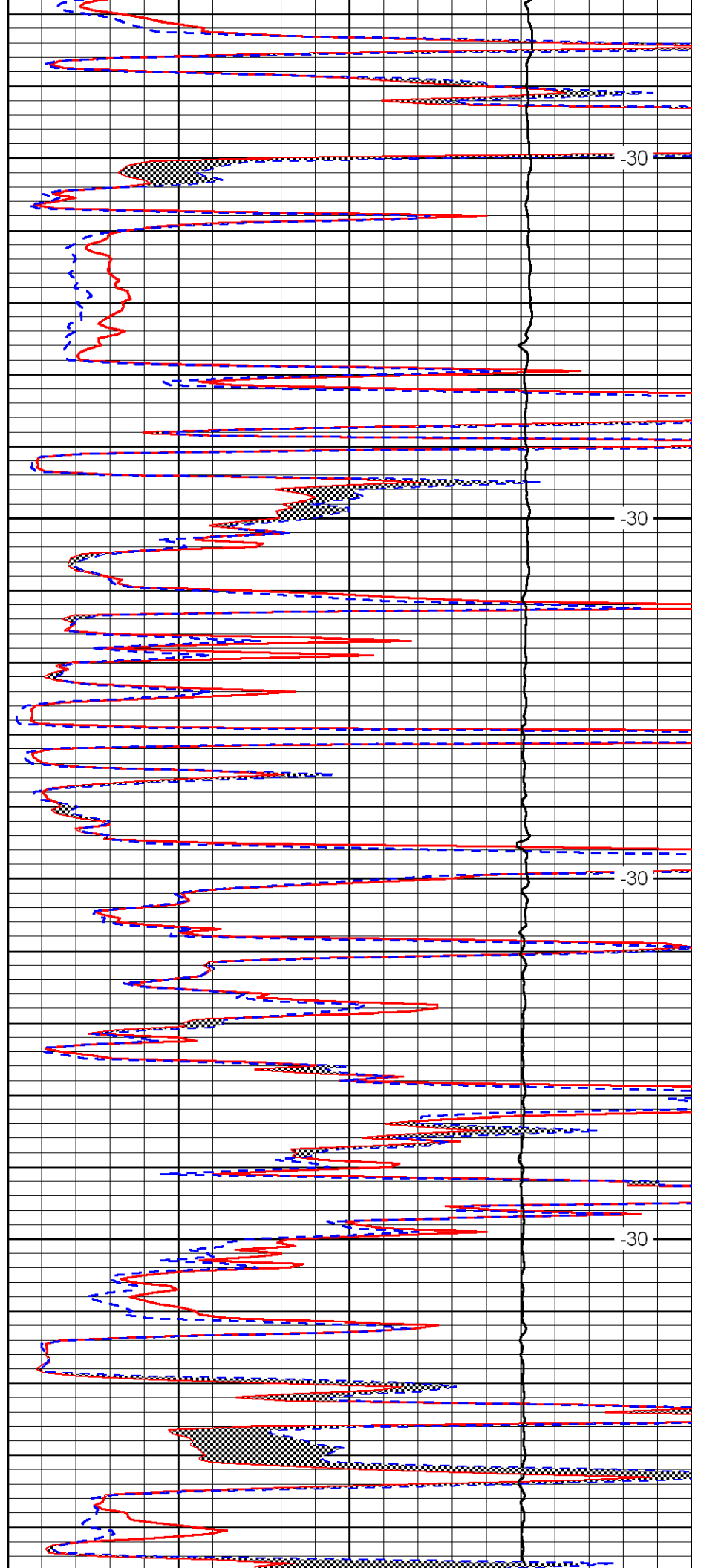


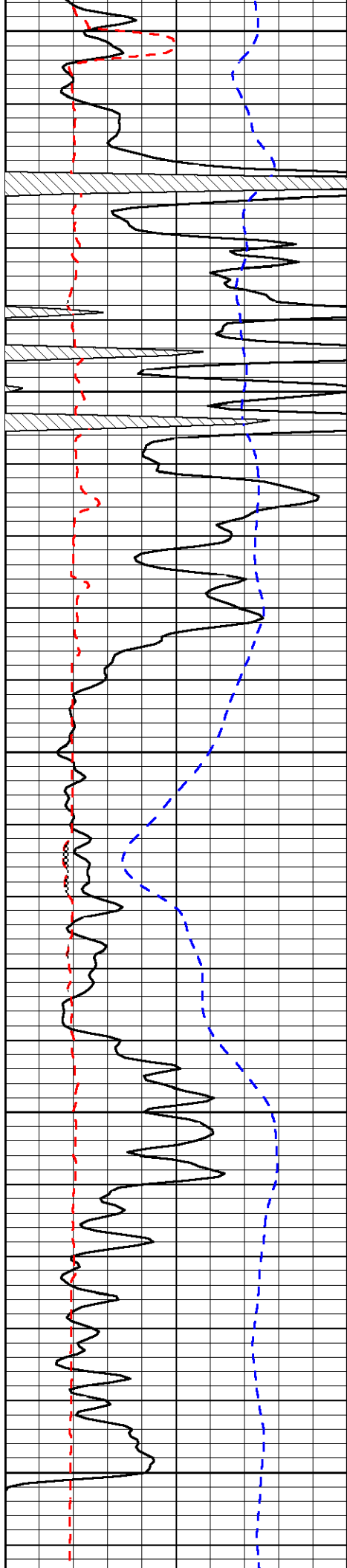
4250

4300

4350

4400





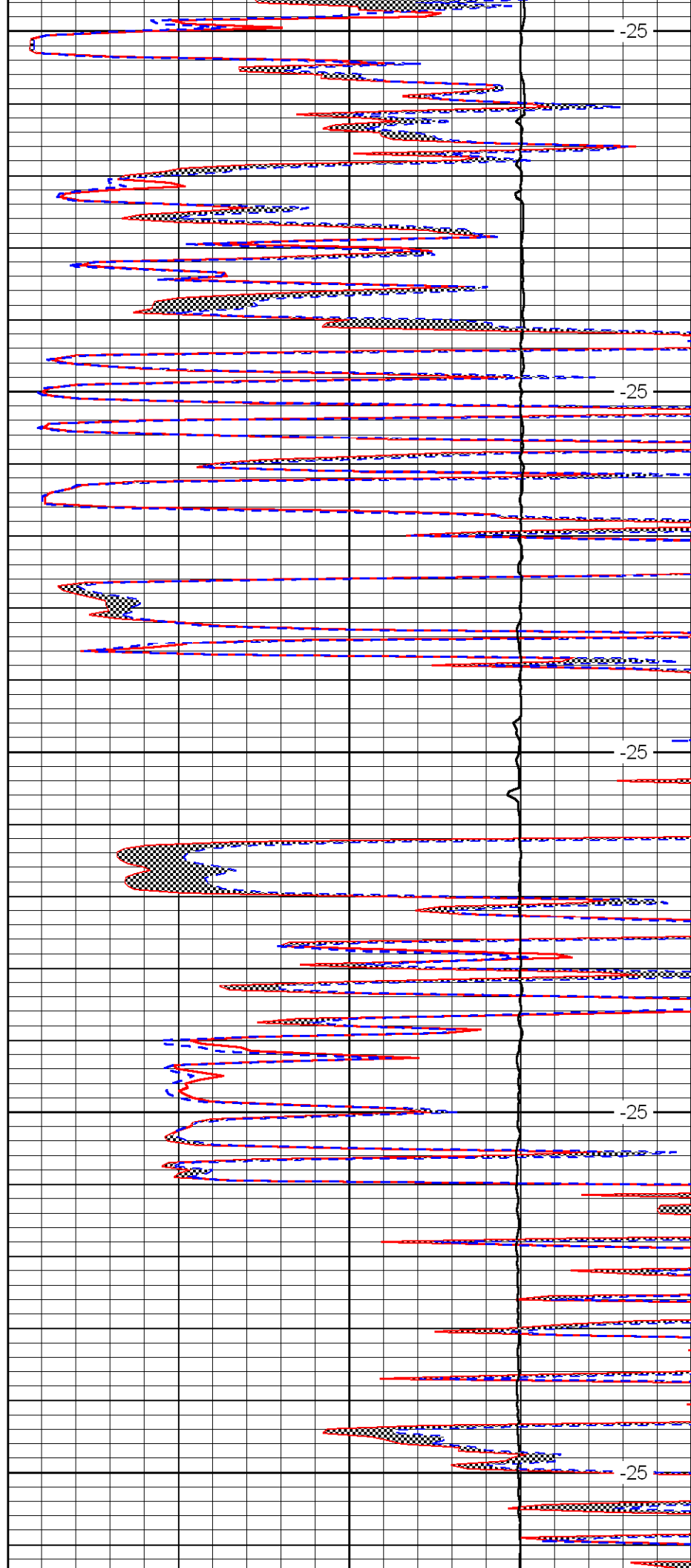
4450

4500

4550

4600

4650



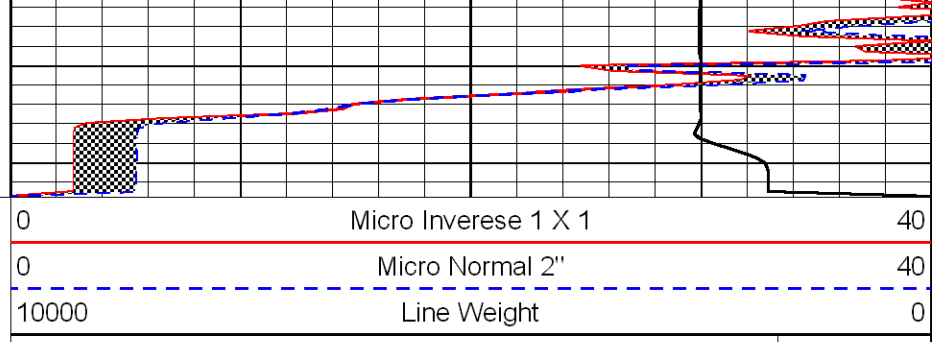
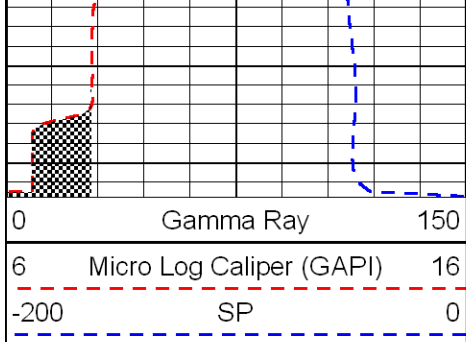
-25

-25

-25

-25

-25



LSPD