



Dual Induction Log

DIGITAL LOG (785) 625-3858

API No.	15-063-21,762-00-00	
Company	H & M Petroleum Corporation	
Well	Bonita Springs No.1	
Field	Bonita Springs	
County	Gove	State
		Kansas
Location	SE SW NW SW 1420' FSL & 400' FWL	
Sec: 7	Twp: 12S	Rge: 30W
Permanent Datum	Ground Level	Elevation 2910
Log Measured From	Kelly Bushing	5 Ft. Above Perm. Datum
Drilling Measured From	Kelly Bushing	
		Other Services CNL/CDL MEL
		Elevation K.B. 2915 D.F. 2910 G.L. 2910

Date	12/19/2008
Run Number	One
Depth Driller	4680
Depth Logger	4678
Bottom Logged Interval	4677
Top Log Interval	200
Casing Driller	8.62 @ 221
Casing Logger	217
Bit Size	7.875
Type Fluid in Hole	Chemical
Salinity, ppm CL	3.100
Density / Viscosity	9.3 60
pH / Fluid Loss	11.0 6.8
Source of Sample	Flowline
Rm @ Meas. Temp	.7 @ 52
Rmf @ Meas. Temp	.53 @ 52
Rmc @ Meas. Temp	.95 @ 52
Source of Rmf / Rmc	Charts
Rm @ BHT	.29 @ 125
Operating Rig Time	4 Hours
Max Rec. Temp. F	125
Equipment Number	17
Location	Hays
Recorded By	C. Desaire
Witnessed By	Randy Say

<<< Fold Here >>>

All interpretations are opinions based on inferences from electrical or other measurements and we cannot and do not guarantee the accuracy or correctness of any interpretation, and we shall not, except in the case of gross or willful negligence on our part, be liable or responsible for any loss, costs, damages, or expenses incurred or sustained by anyone resulting from any interpretation made by any of our officers, agents or employees. These interpretations are also subject to our general terms and conditions set out in our current Price Schedule.

Comments

Thank you for using Log-Tech, Inc.
(785) 625-3858

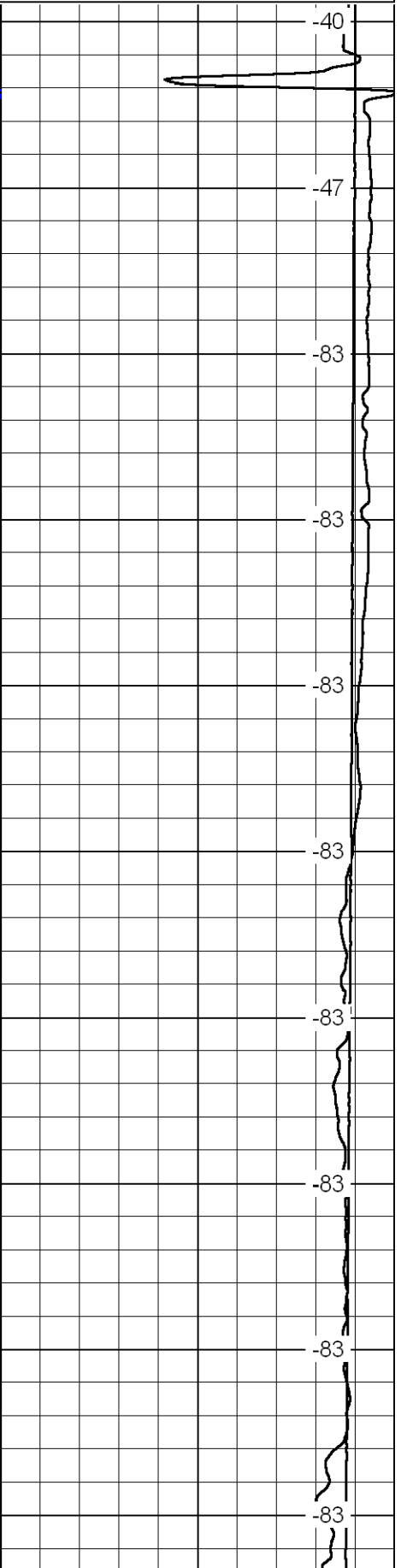
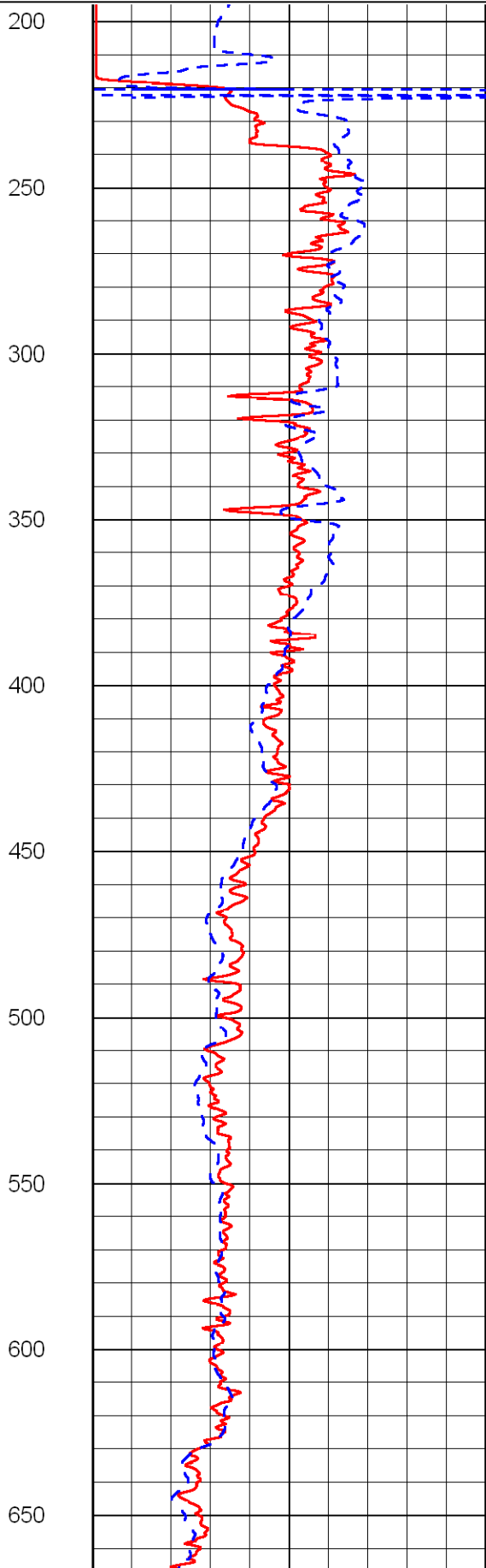
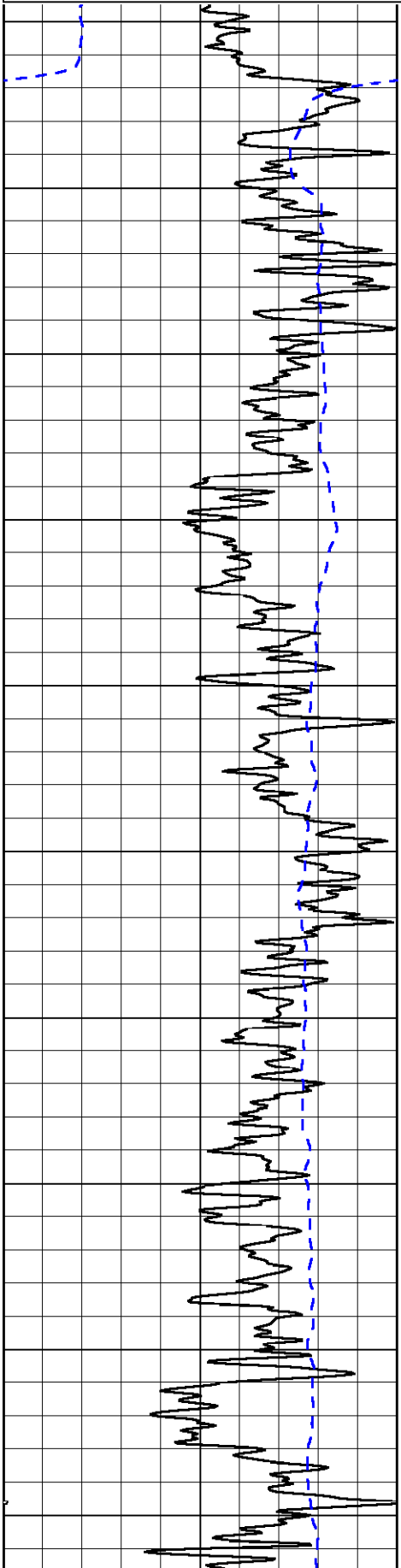
Campus, 6 1/2 S to W Rd,
2 E, N Into

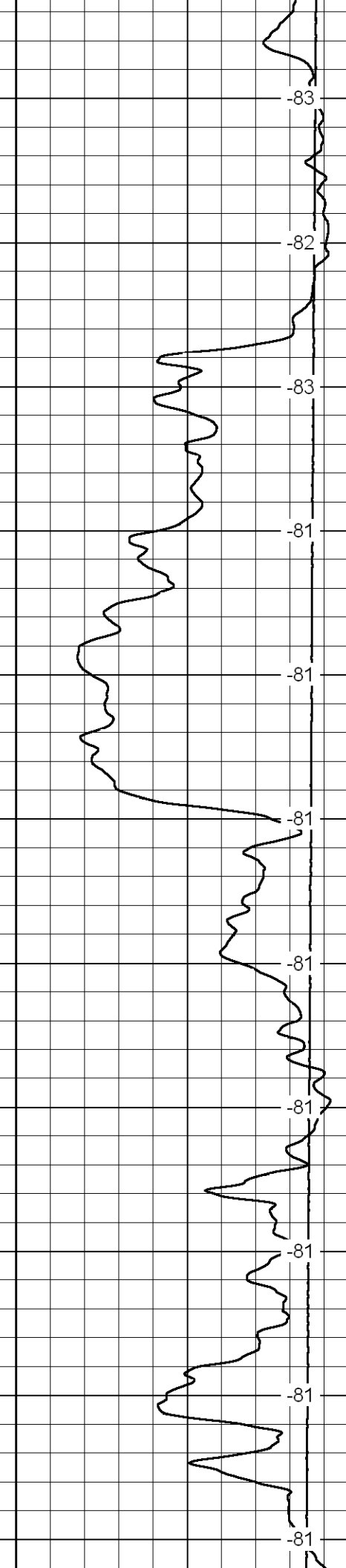
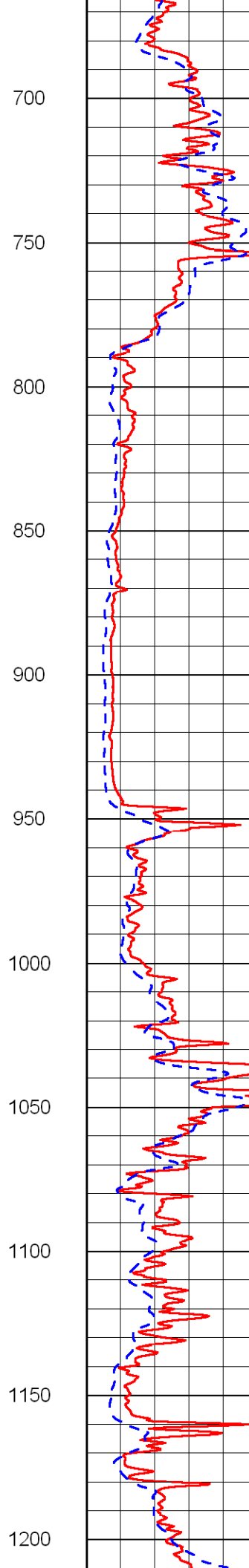
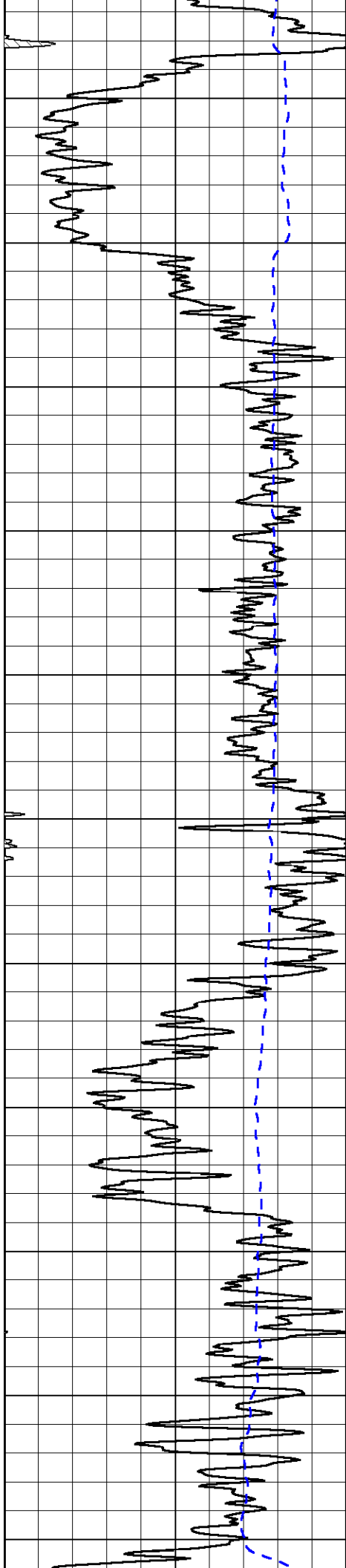
Database File: c:\warrior\data\h&m_bonita springs no.1\h&m2hd.db
 Dataset Pathname: dil/h&mstack
 Presentation Format: dil2in
 Dataset Creation: Fri Dec 19 19:40:26 2008
 Charted by: Depth in Feet scaled 1:600

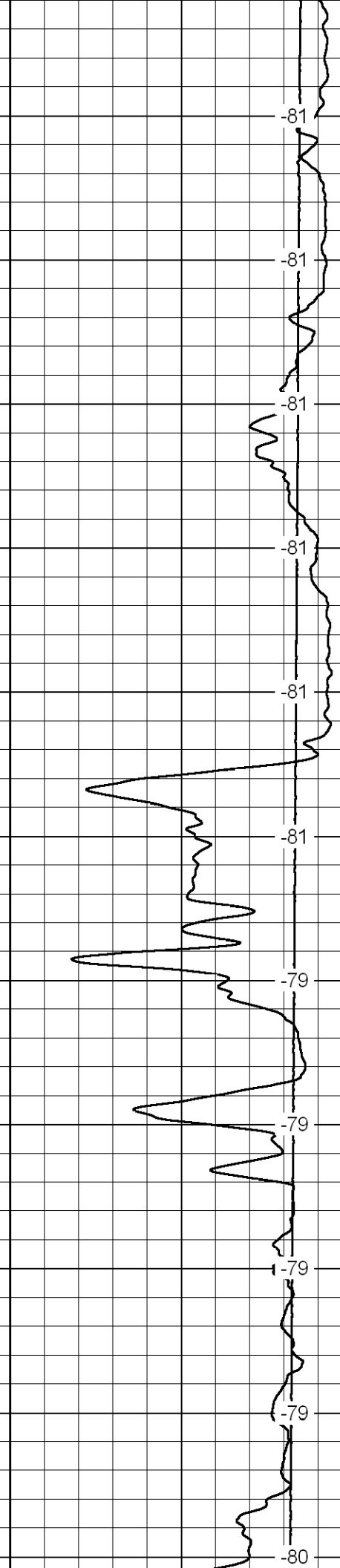
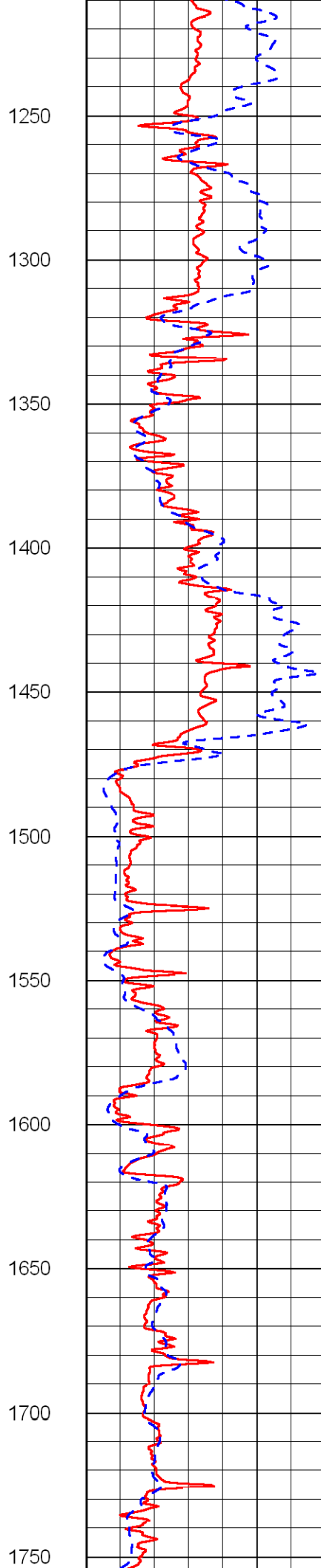
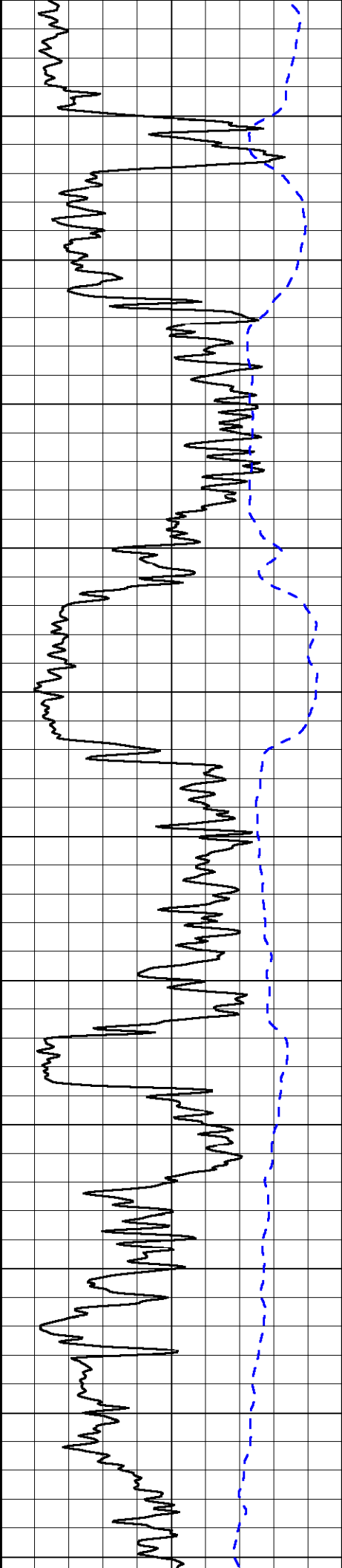
0 Gamma Ray 150
-200 SP 0

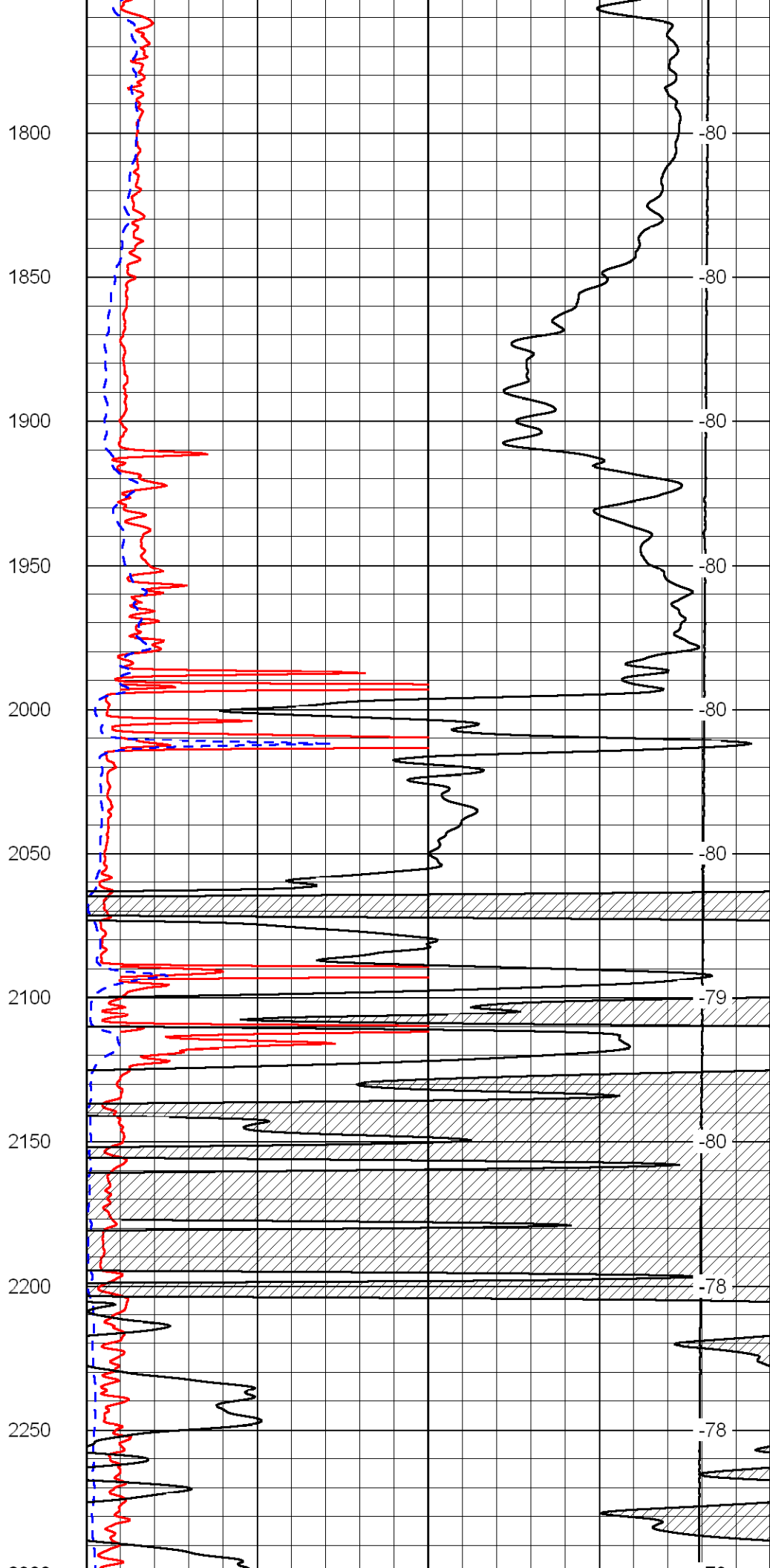
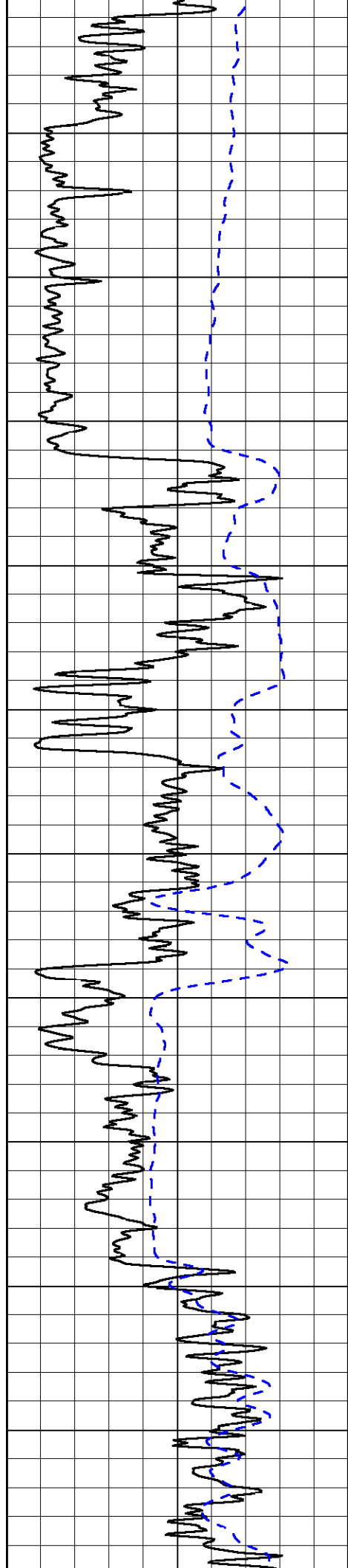
0 Shallow Resistivity 50
0 Deep Resistivity 50
1000 Conductivity 0
15000 Line Tension 0
50 Shallow Resistivity 50
50 Deep Resistivity 50

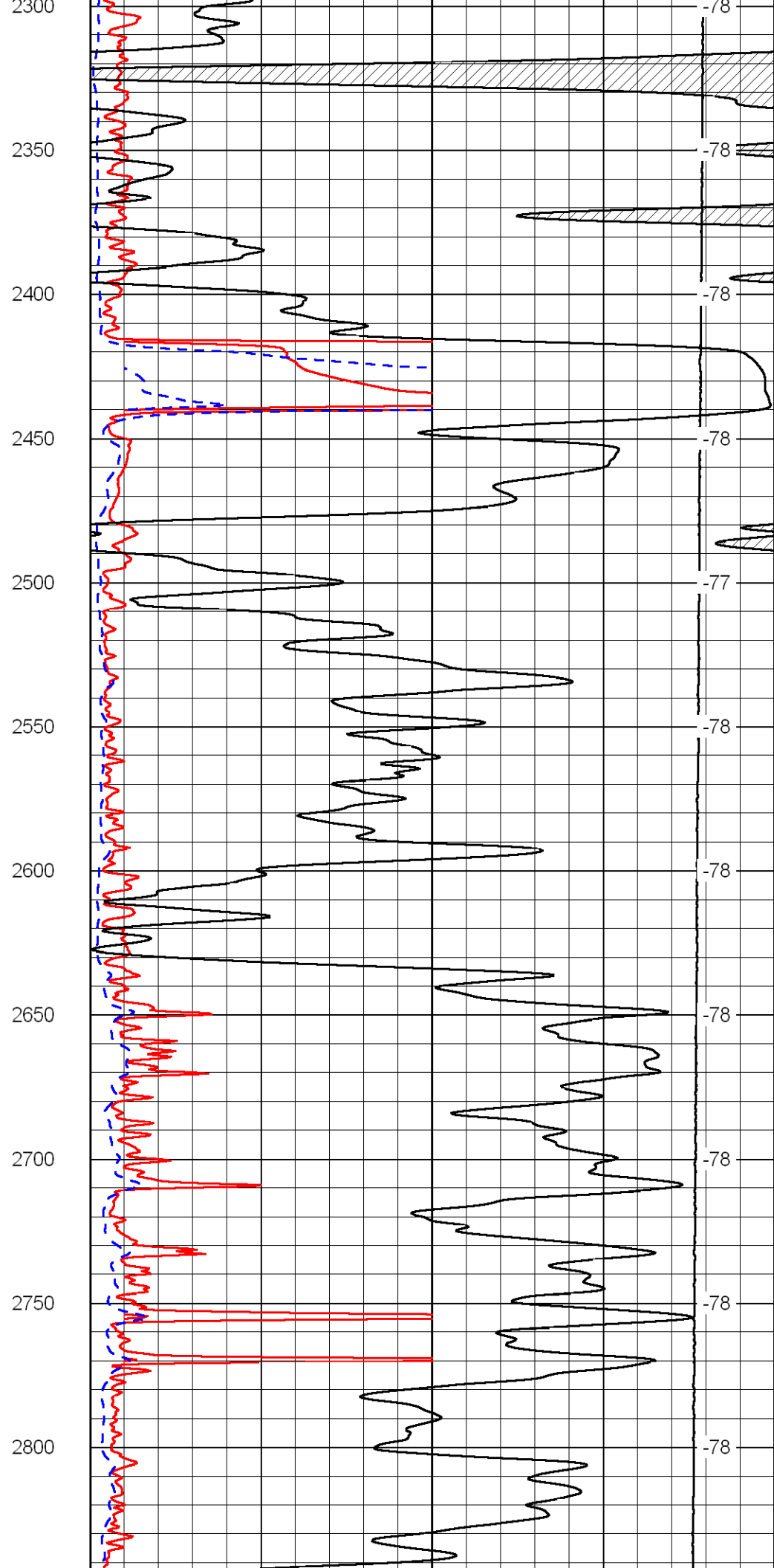
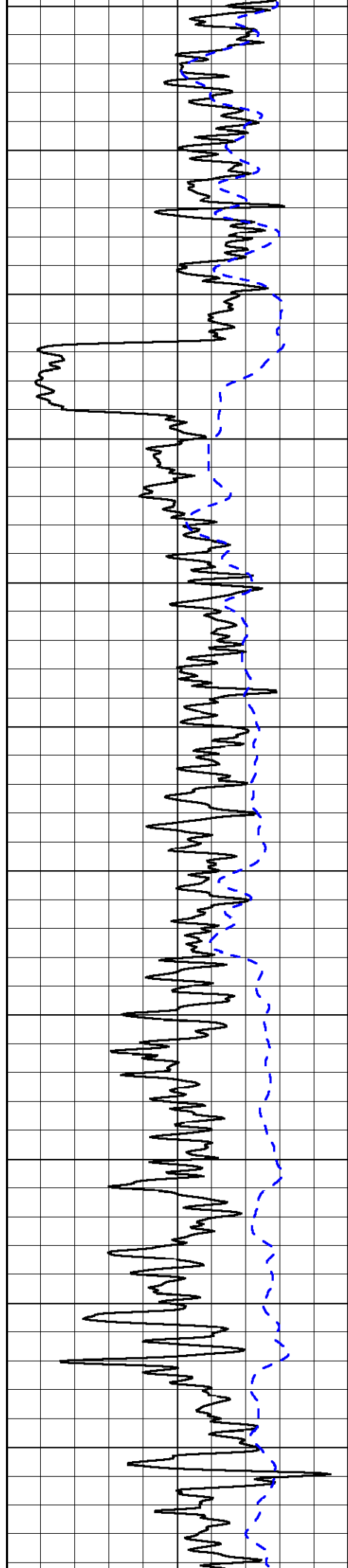
LSPD

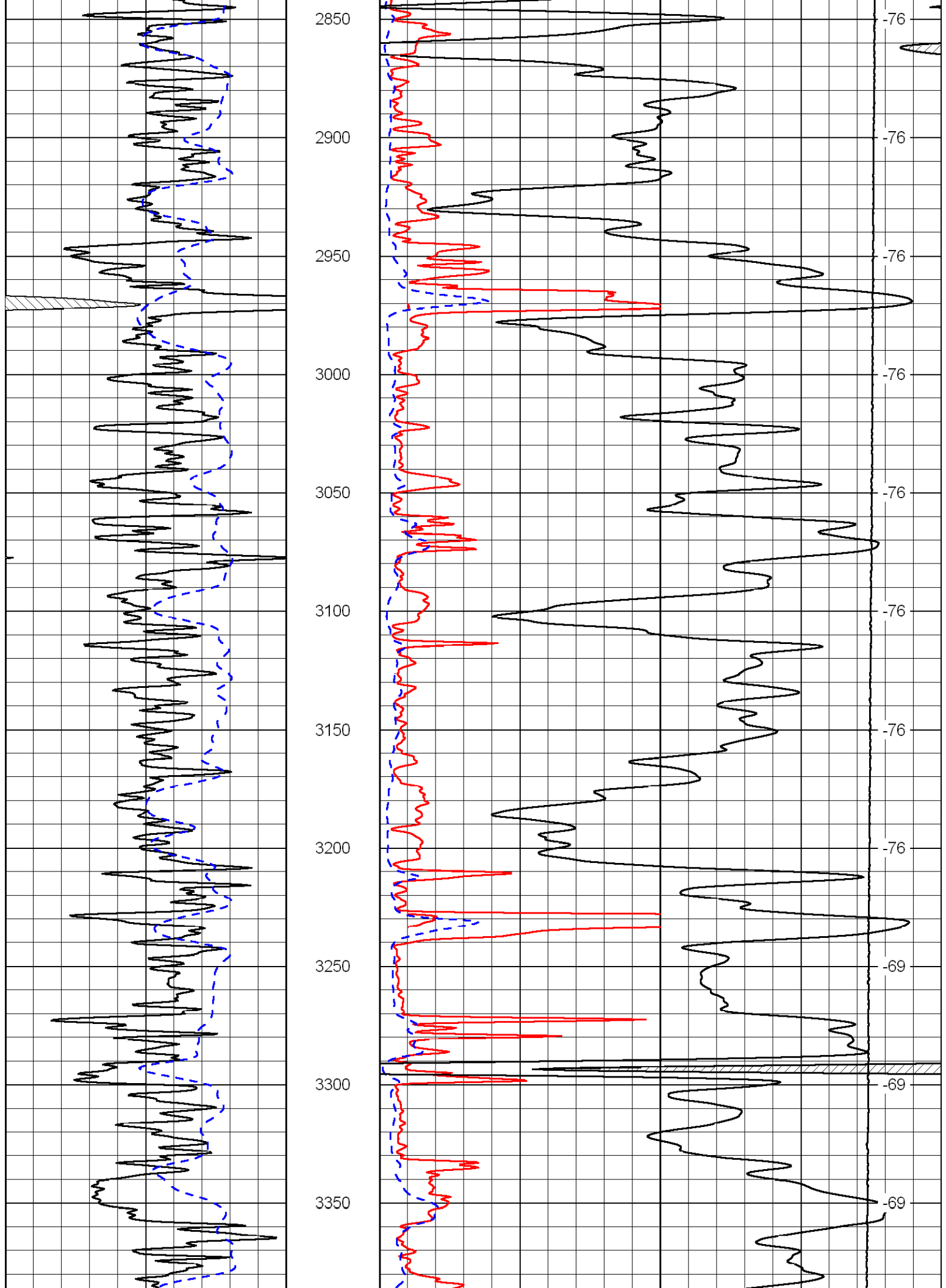


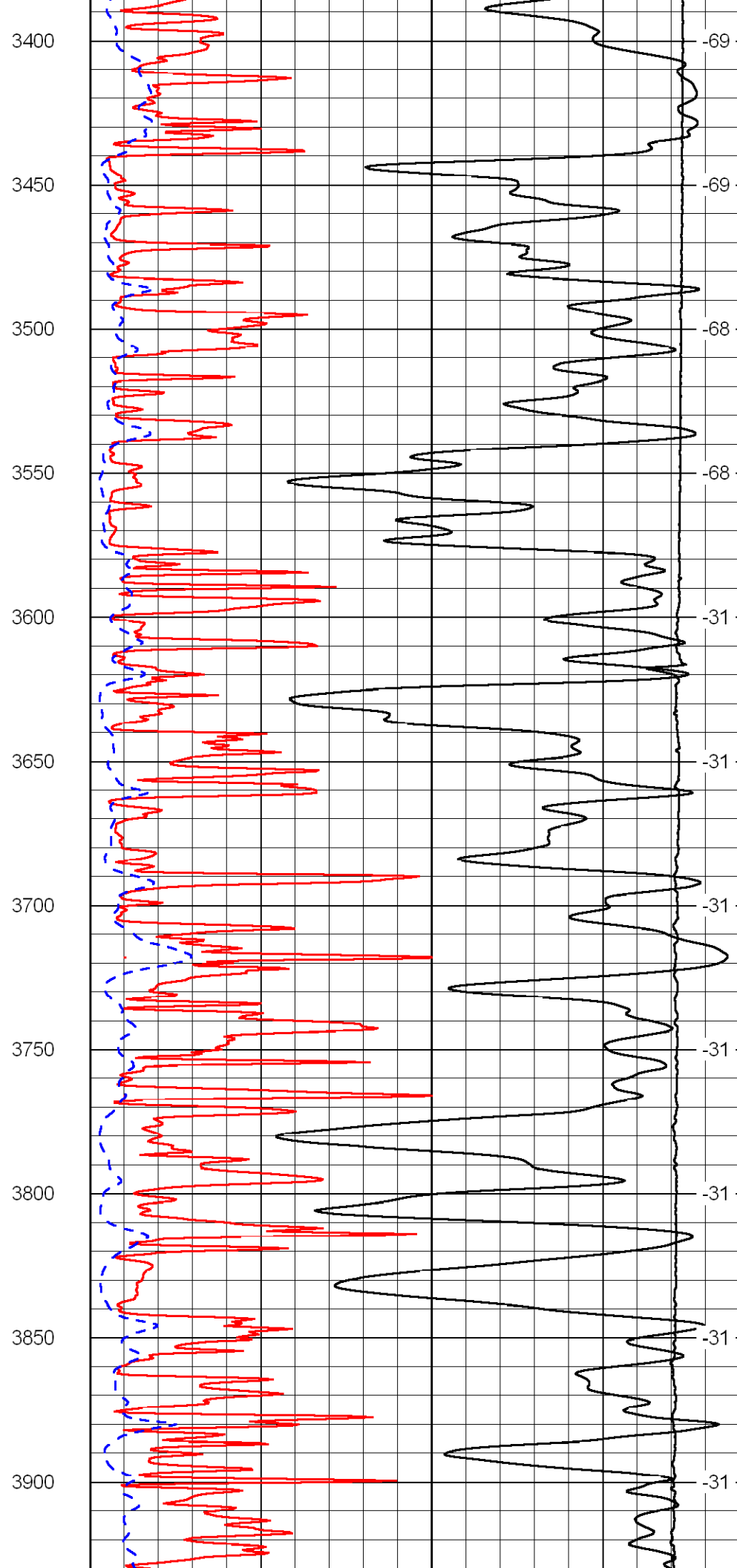
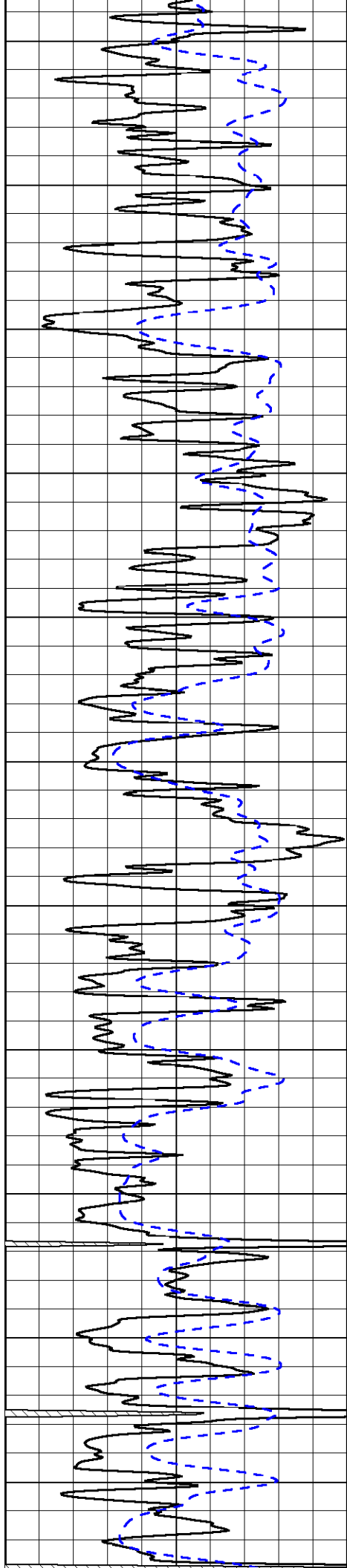


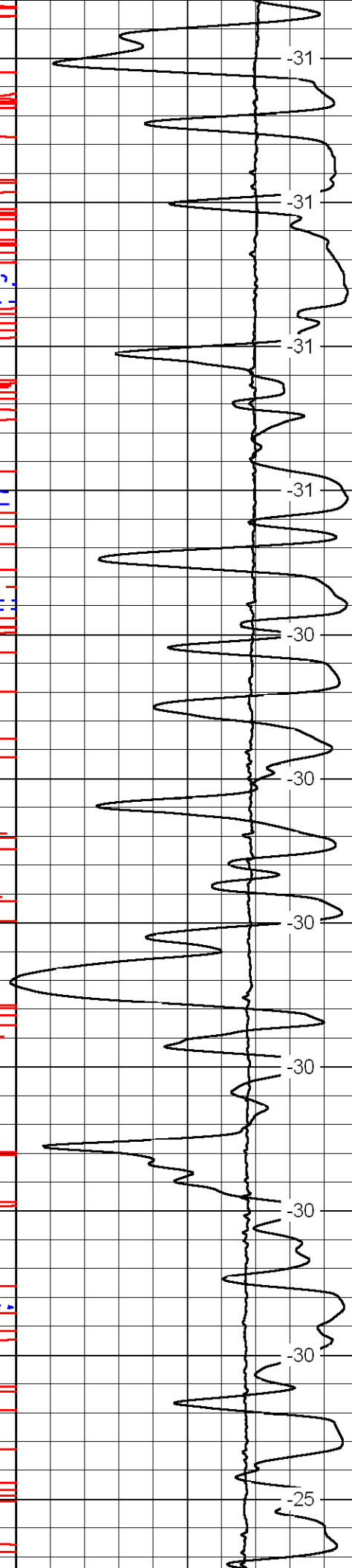
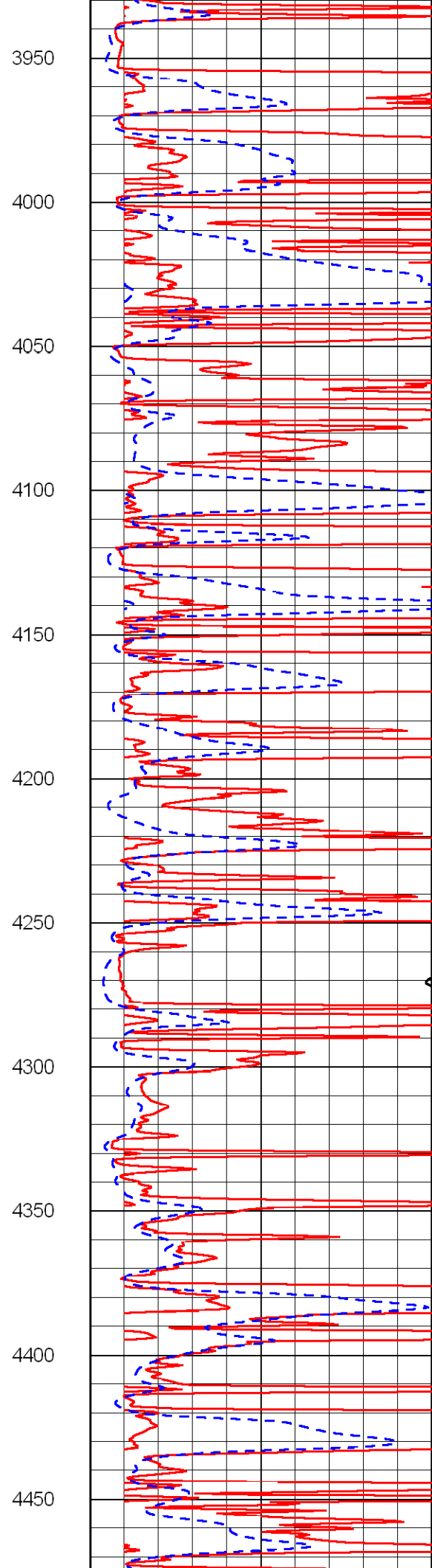
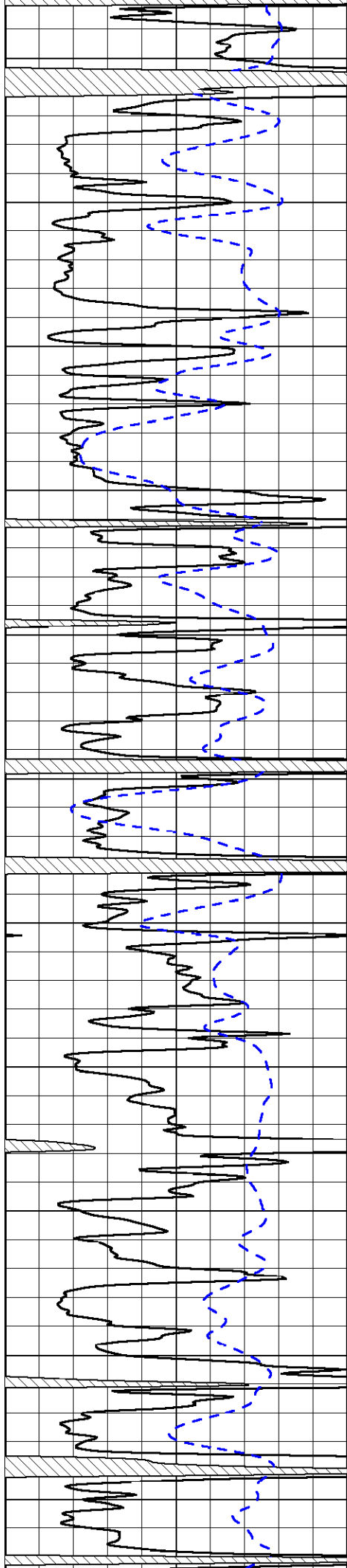


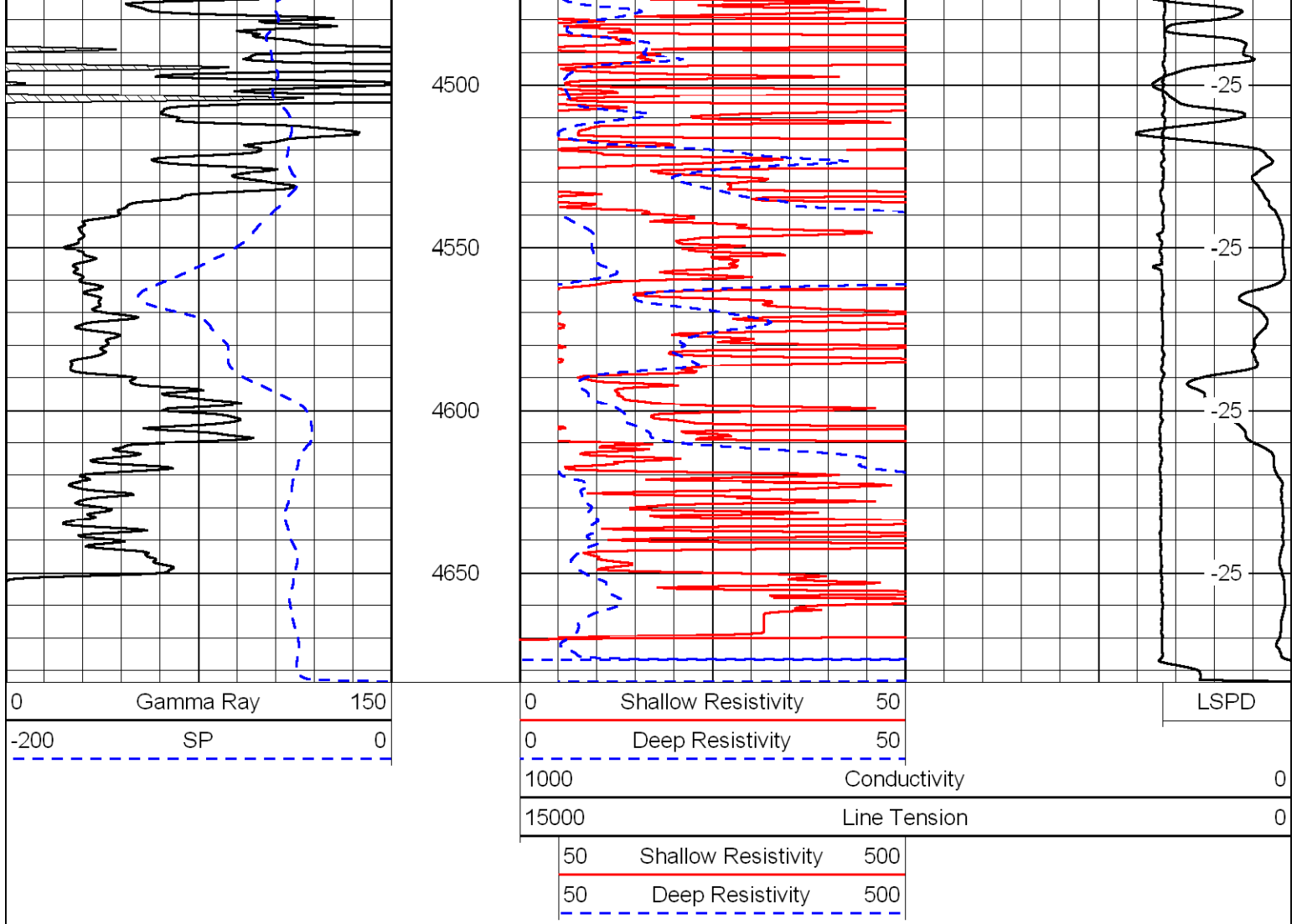




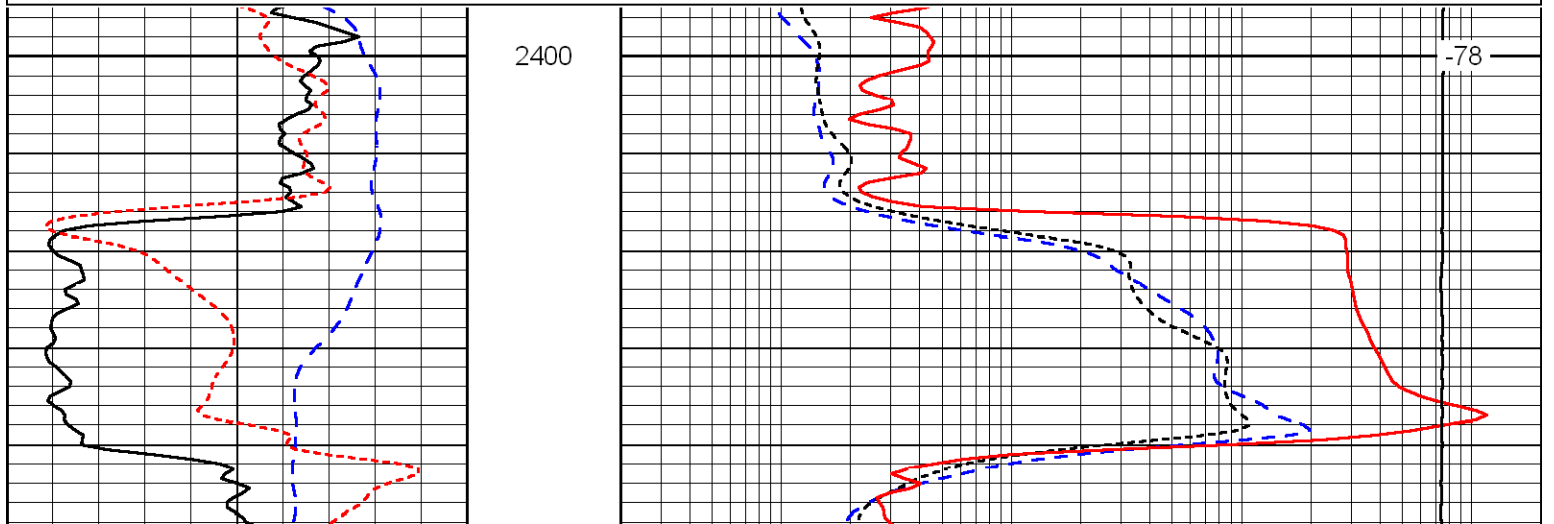
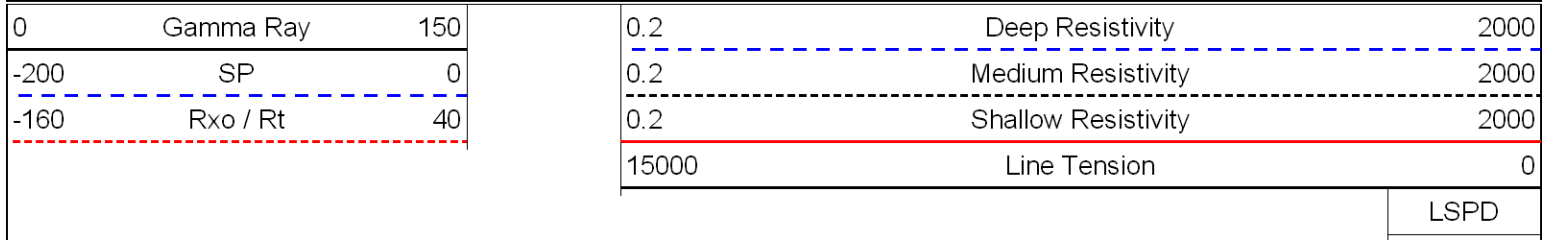


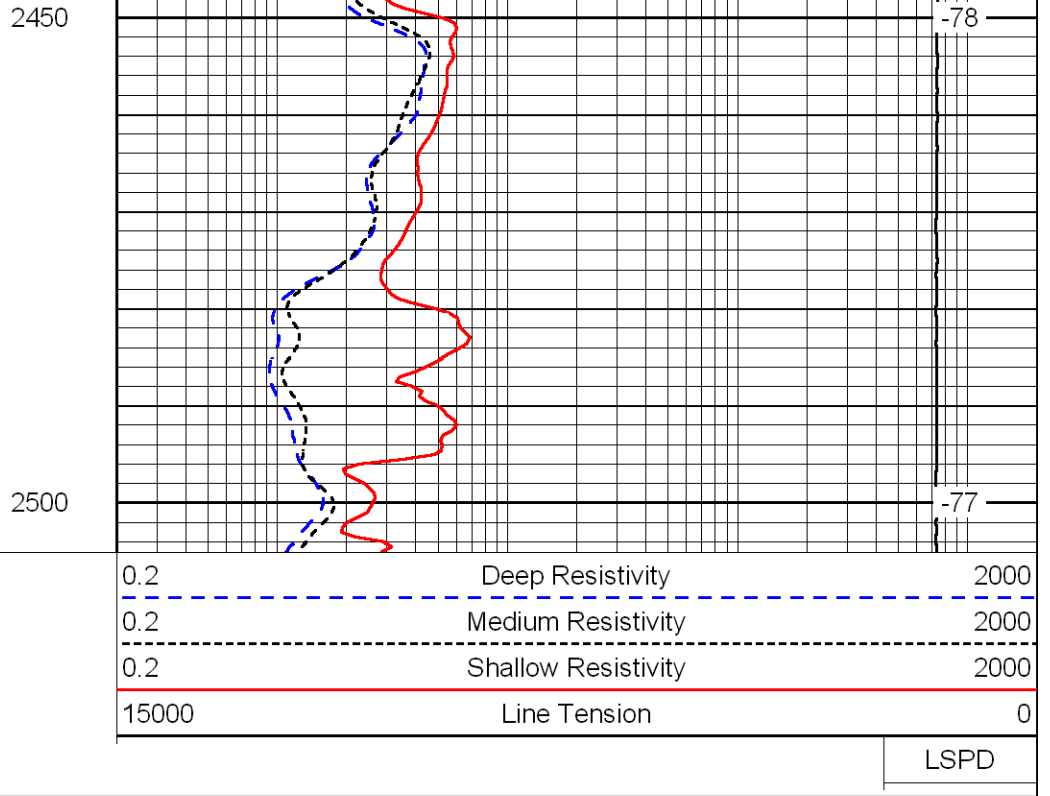
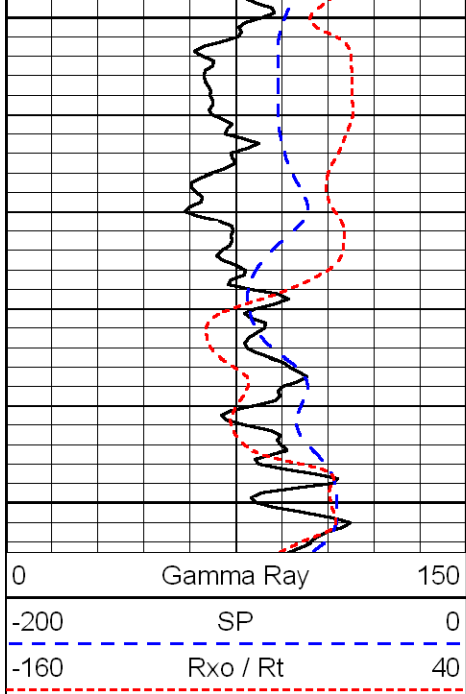




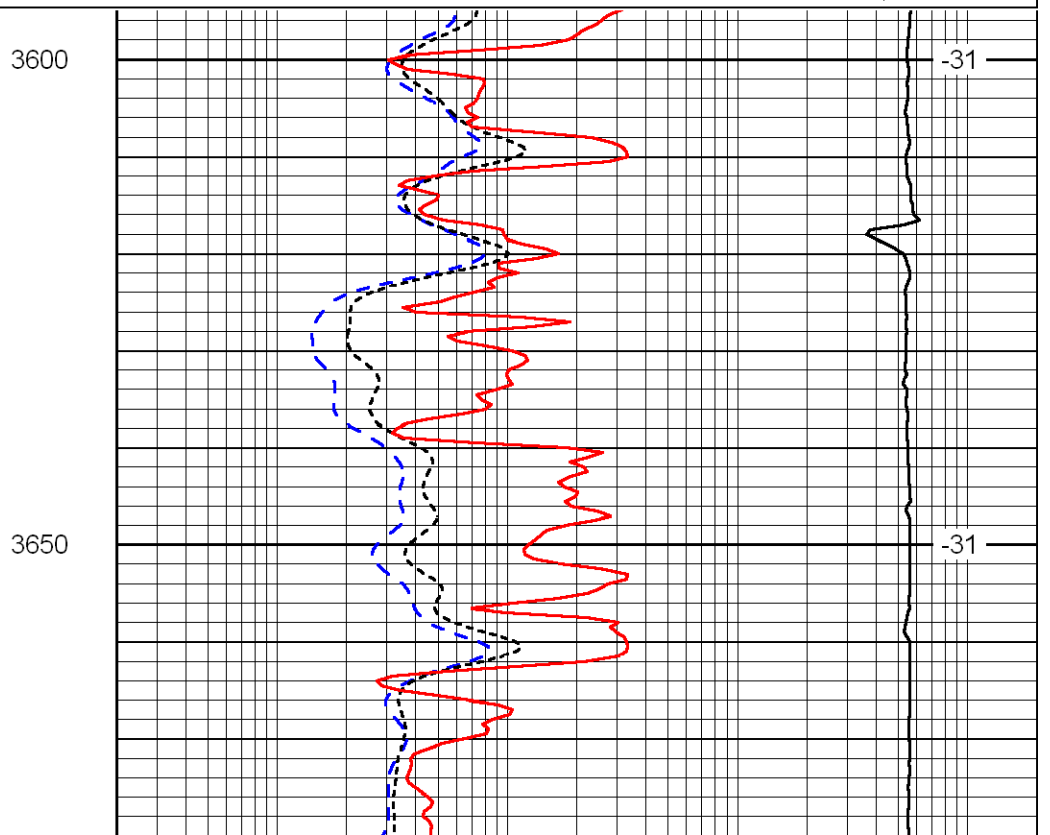
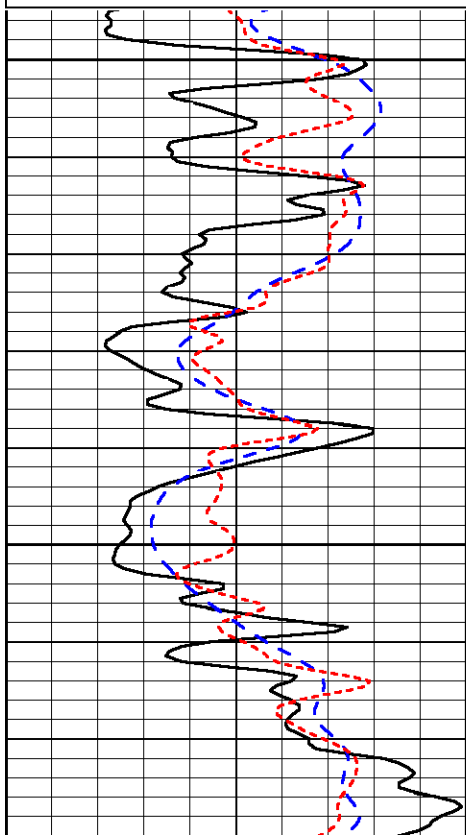
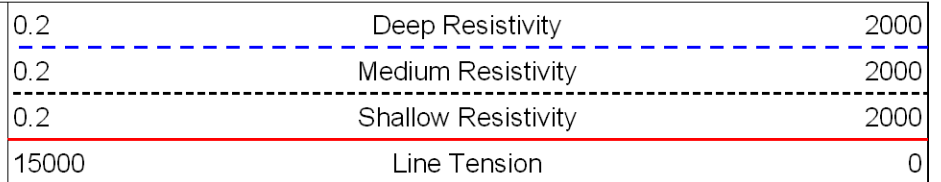
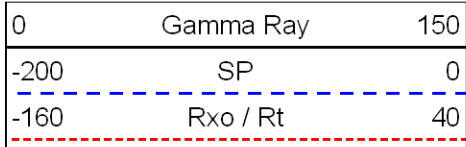


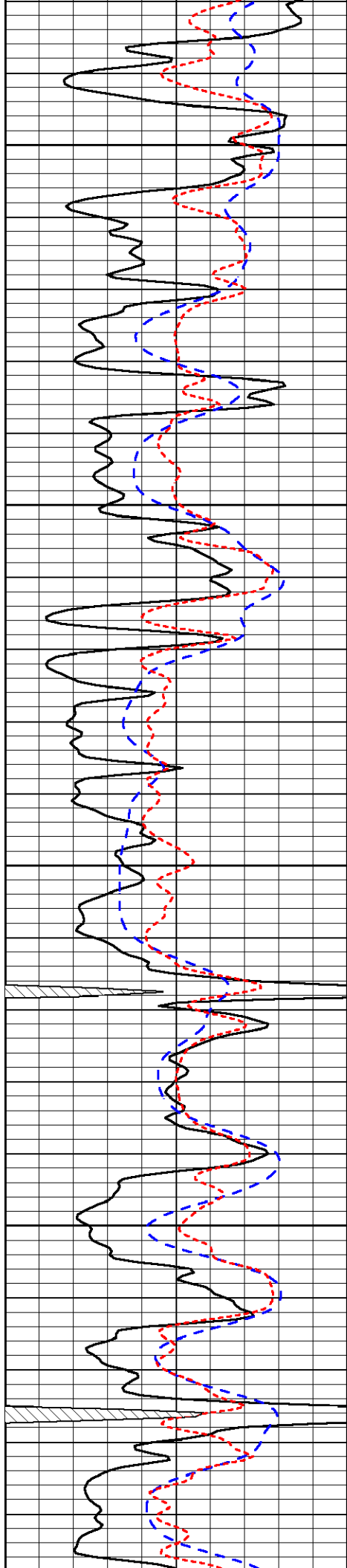
Database File: c:\warrior\data\h&m_bonita springs no.1\h&m2hd.db
 Dataset Pathname: dil/h&mstack
 Presentation Format: dil
 Dataset Creation: Fri Dec 19 19:40:26 2008
 Charted by: Depth in Feet scaled 1:240





Database File: c:\warrior\data\h&m_bonita springs no.1\h&m2hd.db
 Dataset Pathname: dil/h&mstack
 Presentation Format: dil
 Dataset Creation: Fri Dec 19 19:40:26 2008
 Charted by: Depth in Feet scaled 1:240



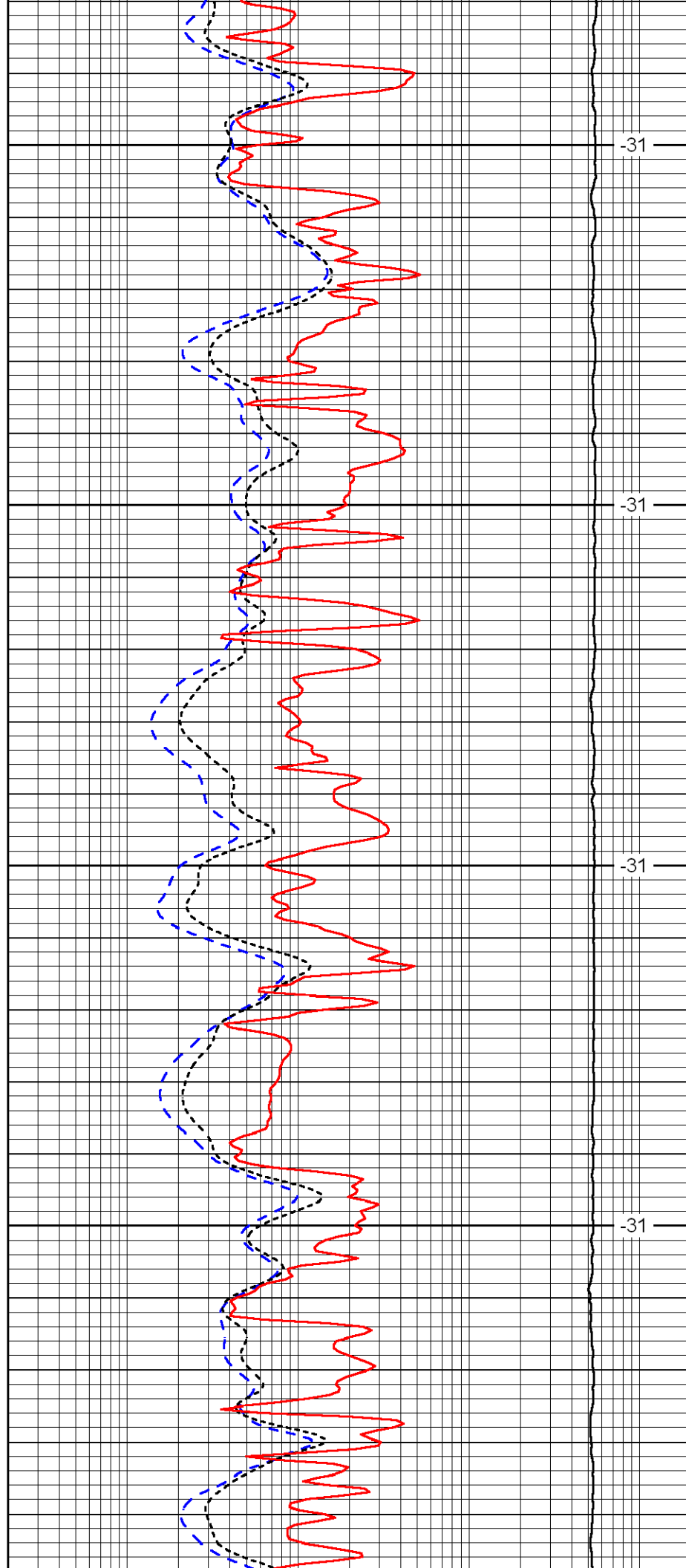


3700

3750

3800

3850

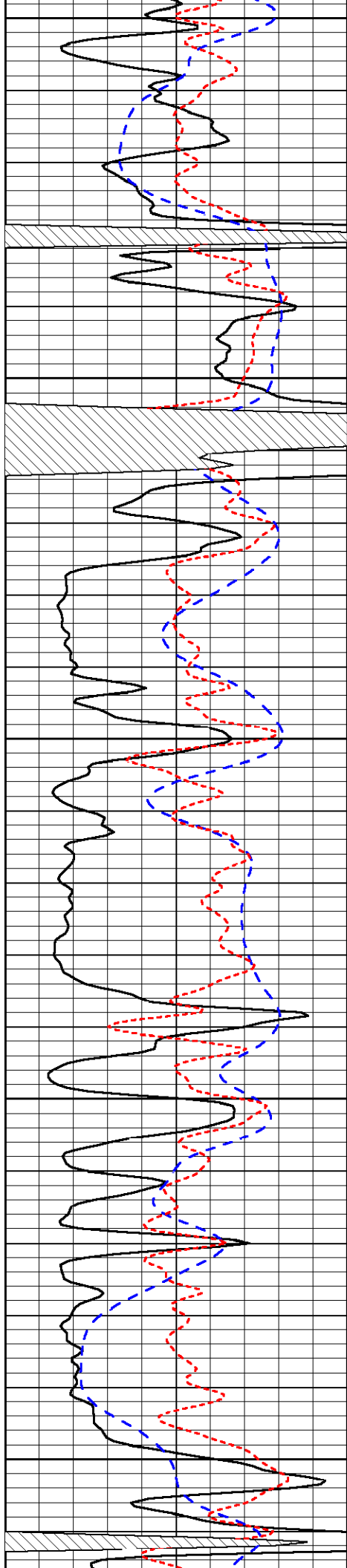


-31

-31

-31

-31



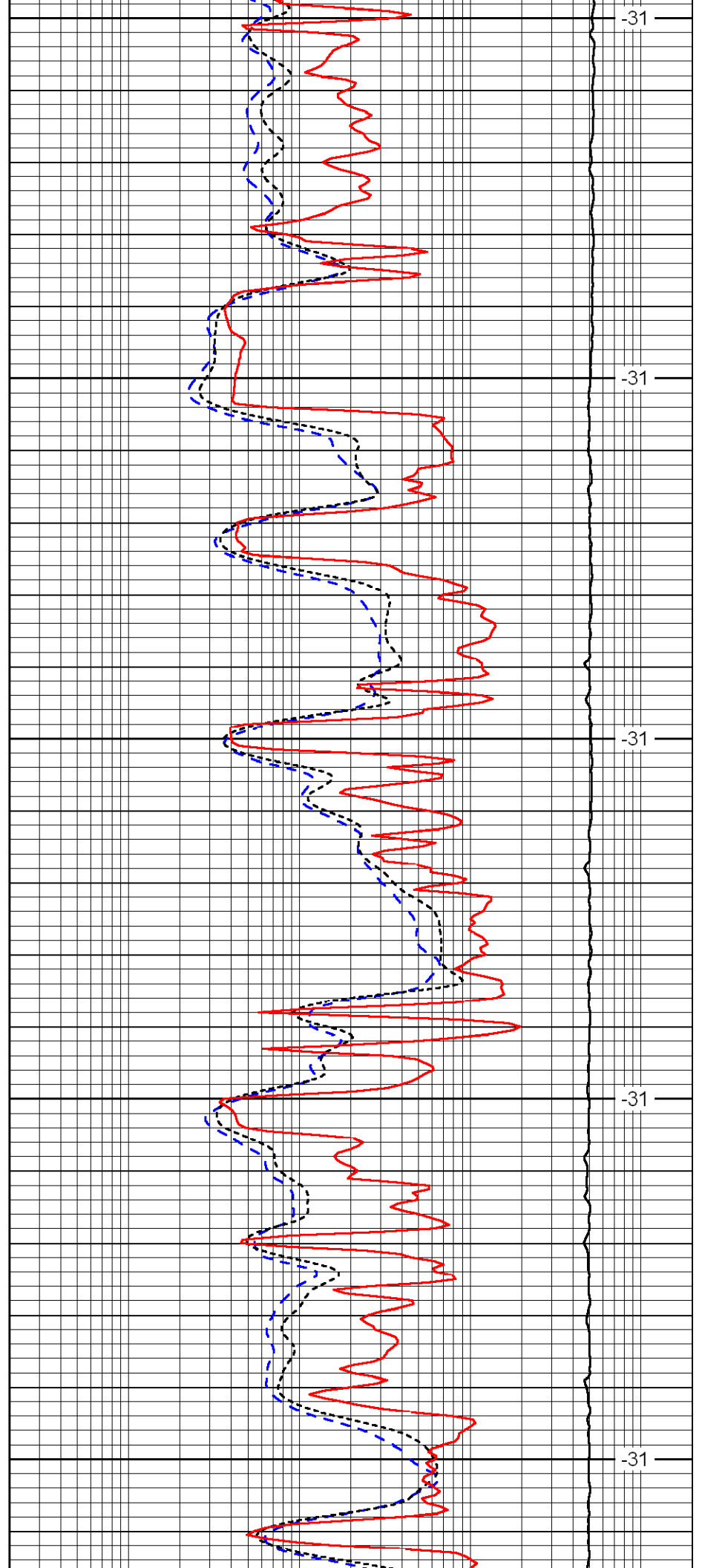
3900

3950

4000

4050

4100



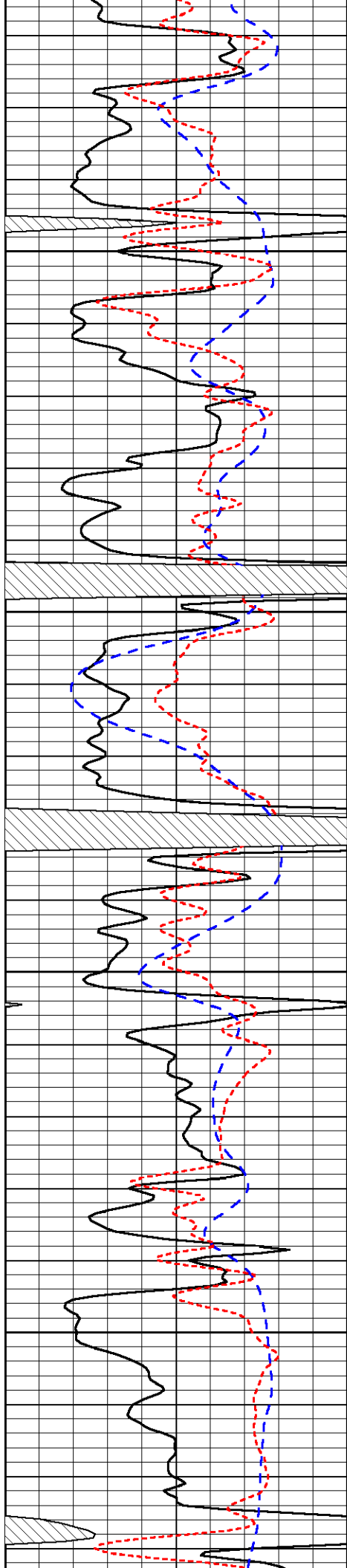
-31

-31

-31

-31

-31

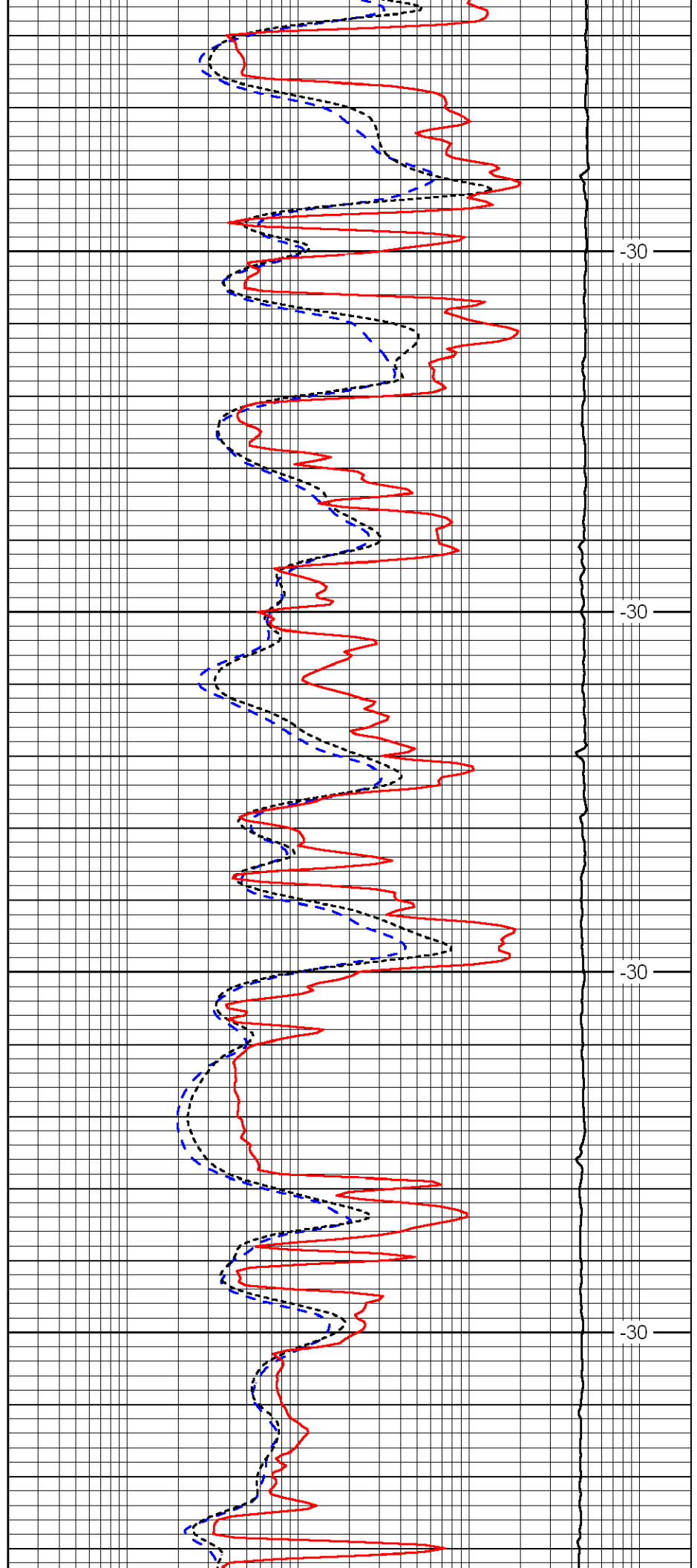


4150

4200

4250

4300

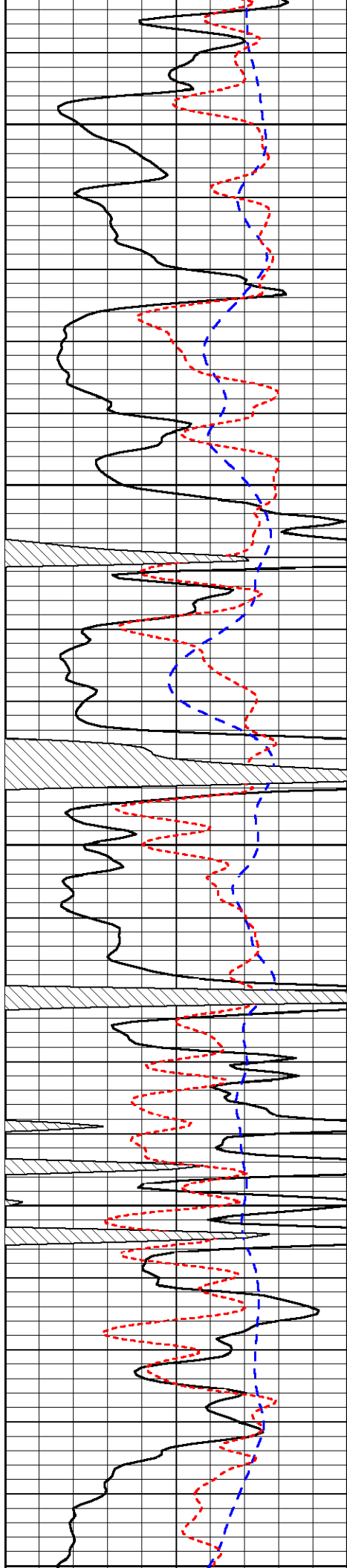


-30

-30

-30

-30



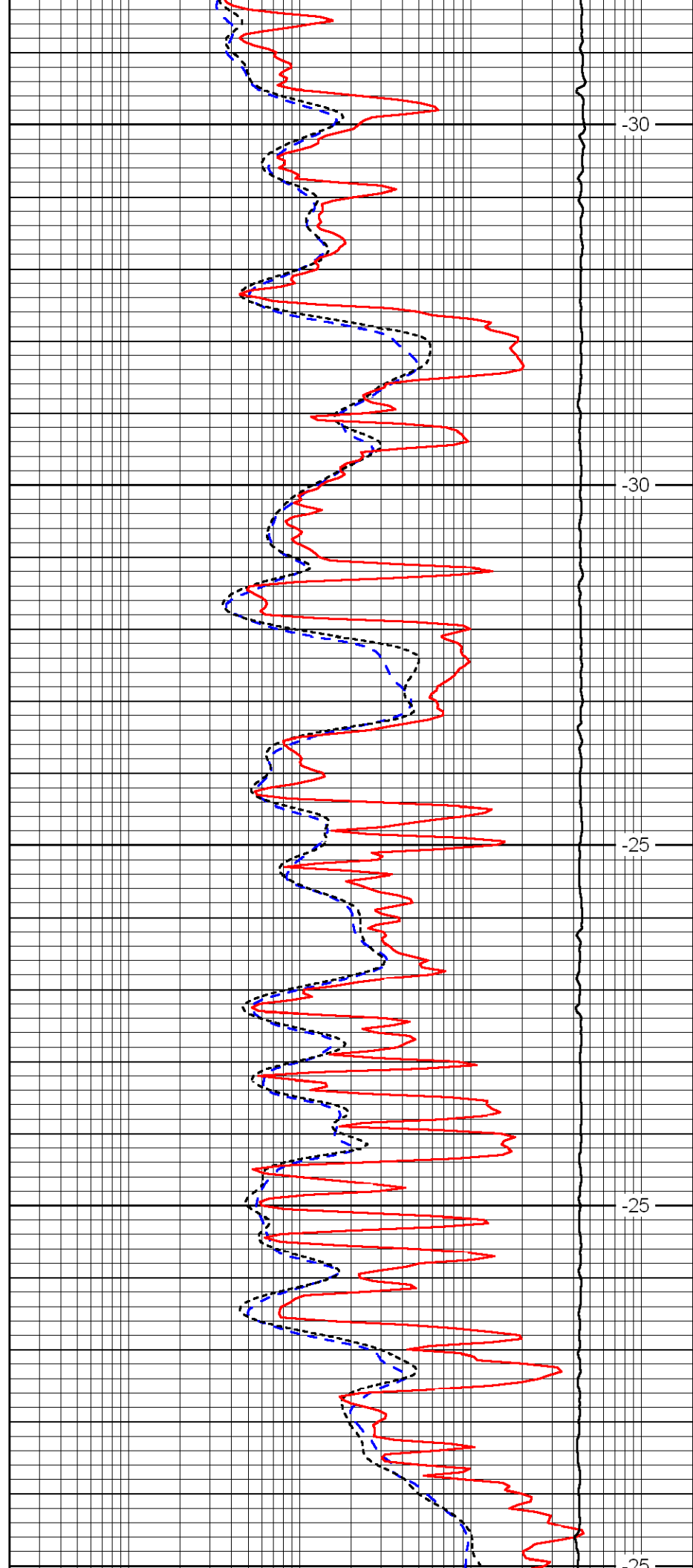
4350

4400

4450

4500

4550



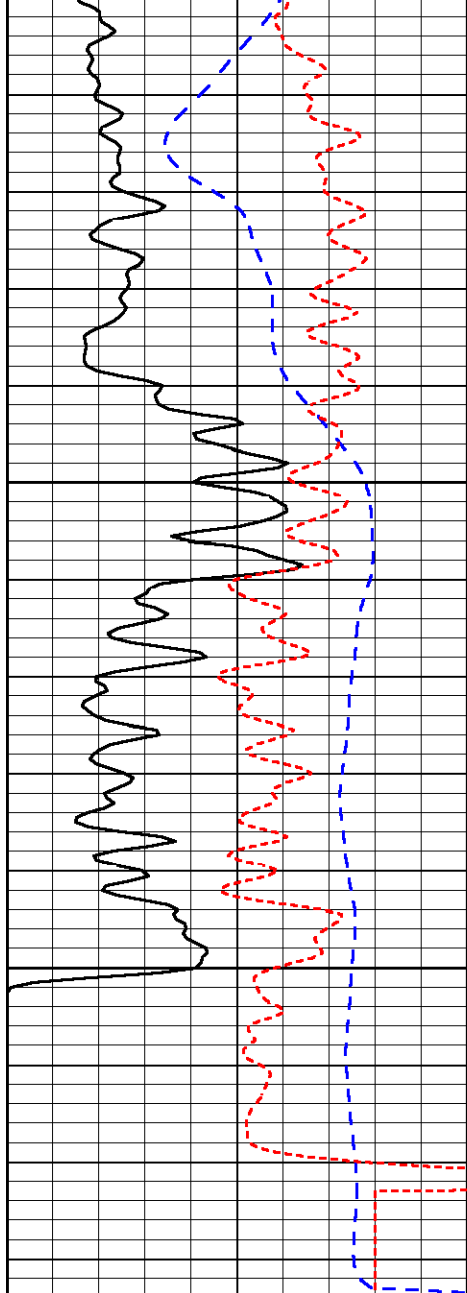
-30

-30

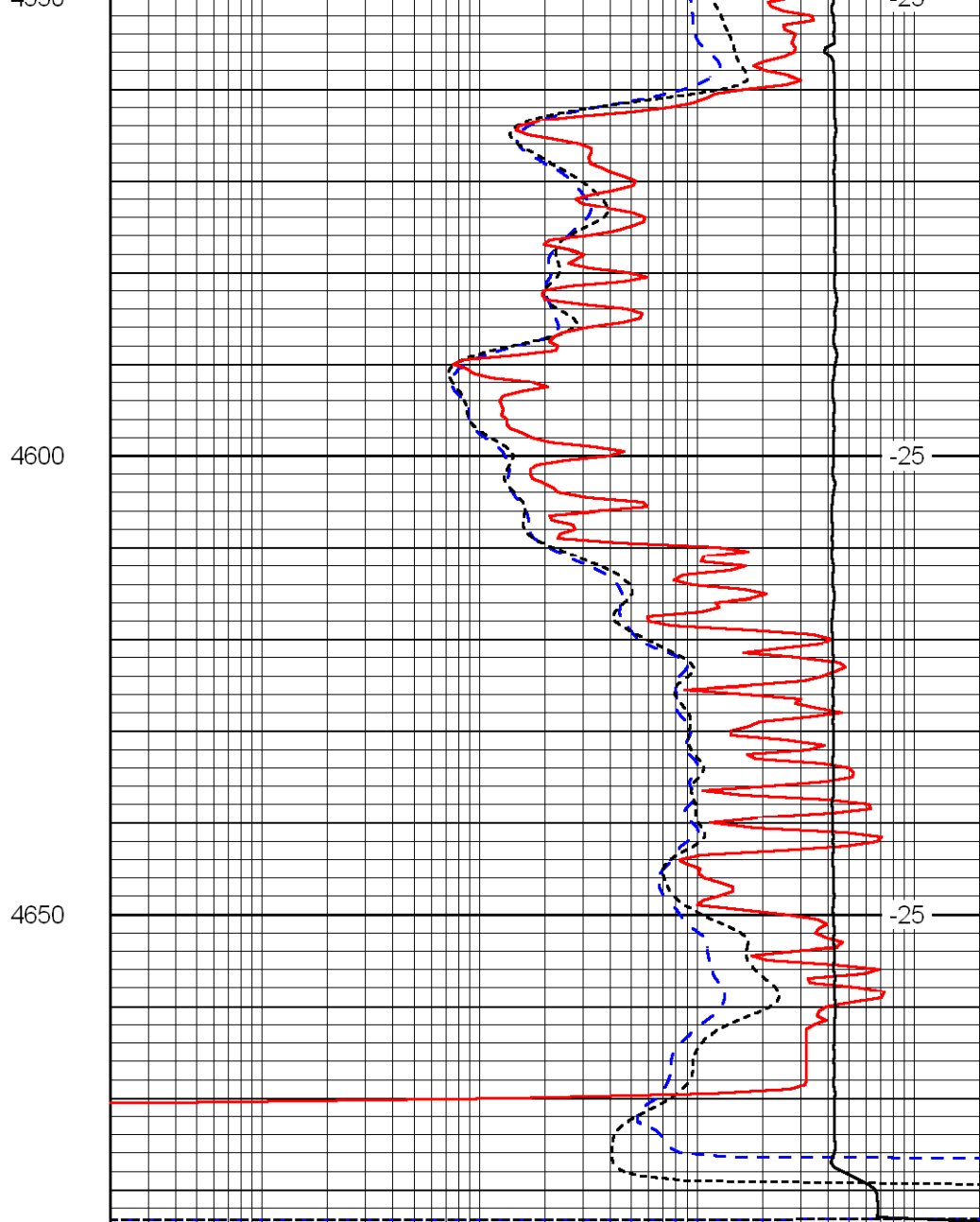
-25

-25

-25



0	Gamma Ray	150
-200	SP	0
-160	Rxo / Rt	40



0.2	Deep Resistivity	2000
0.2	Medium Resistivity	2000
0.2	Shallow Resistivity	2000
15000	Line Tension	0

LSPD