



**Borehole Compensated
Sonic Log**

DIGITAL LOG (785) 625-3858

API No. 15-065-23,509-00-00	Company Murfin Drilling Company, Inc.	Location E/2 - NW - SE - NW 1650' FNL & 1850' FWL	Other Services CNL/CDL MEL/DIL
Well Sears McValler No. 1-19	County Graham		
Field Nora	State Kansas		
Sec: 19	Twp: 10 S	Rge: 21 W	Elevation K.B. 2262 D.F. 2257 G.L. 2257

Permanent Datum	Ground Level	Elevation 2257
Log Measured From	Kelly Bushing	5 Ft. Above Perm. Datum
Drilling Measured From	Kelly Bushing	
Date	12/5/2008	
Run Number	Two	
Type Log	BHC Sonic	
Depth Driller	4003	
Depth Logger	4003	
Bottom Logged Interval	3992	
Top Logged Interval	200	
Type Fluid In Hole	Chemical	
Salinity, PPM CL	2,600	
Density	9.1	
Level	Full	
Max. Rec. Temp. F	116	
Operating Rig Time	5 Hours	
Equipment -- Location	15 Hays	
Recorded By	B. Becker	
Witnessed By	Kent Crisler	

Borehole Record		Casing Record					
Run No	Bit	From	To	Size	Wgt.	From	To
1	12.25	00	219	8.625	24#	00	219
2	7.875	219	4003				

<<< Fold Here >>>

All interpretations are opinions based on inferences from electrical or other measurements and we cannot and do not guarantee the accuracy or correctness of any interpretation, and we shall not, except in the case of gross or willful negligence on our part, be liable or responsible for any loss, costs, damages, or expenses incurred or sustained by anyone resulting from any interpretation made by any of our officers, agents or employees. These interpretations are also subject to our general terms and conditions set out in our current Price Schedule.

Comments

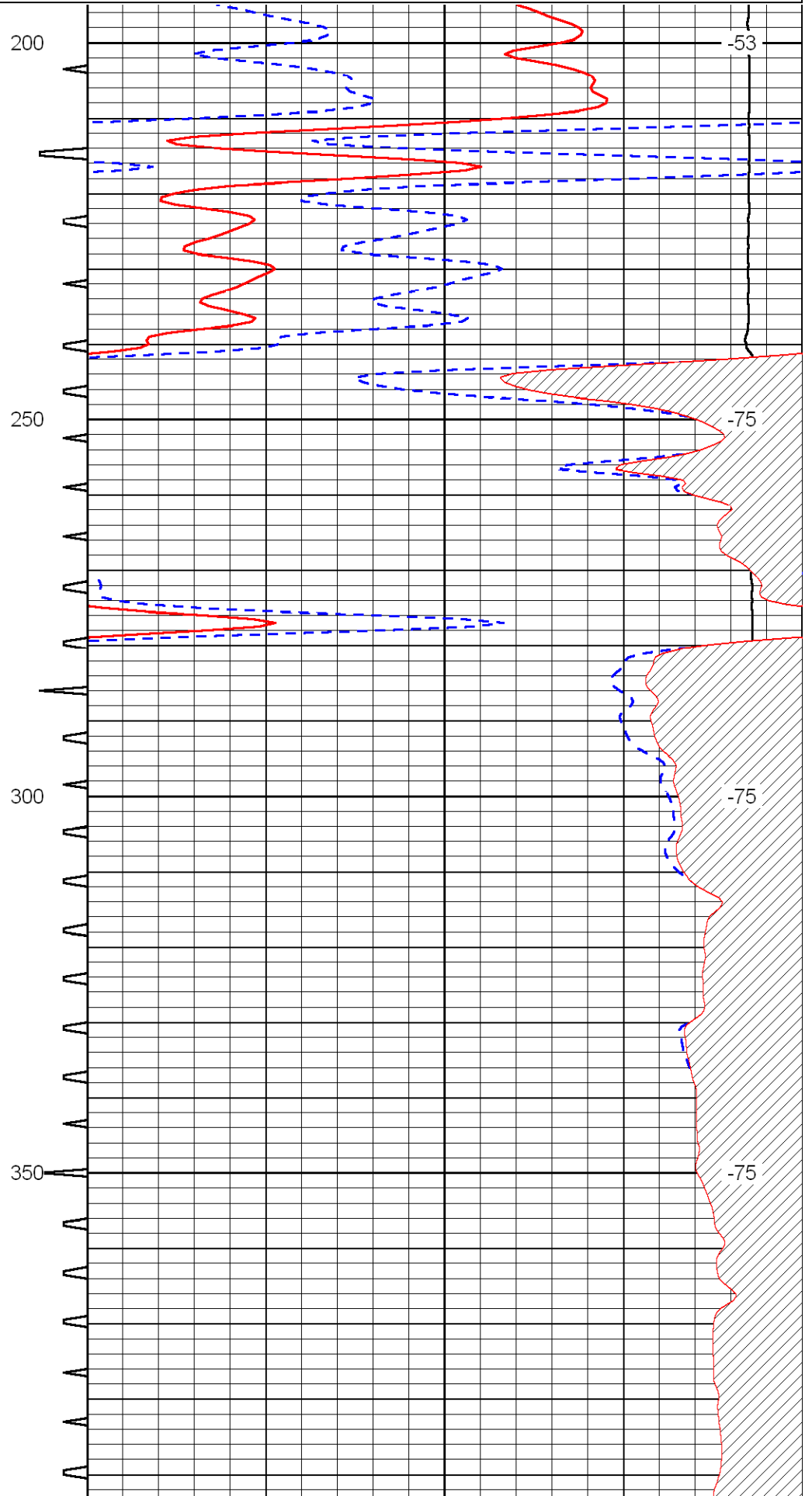
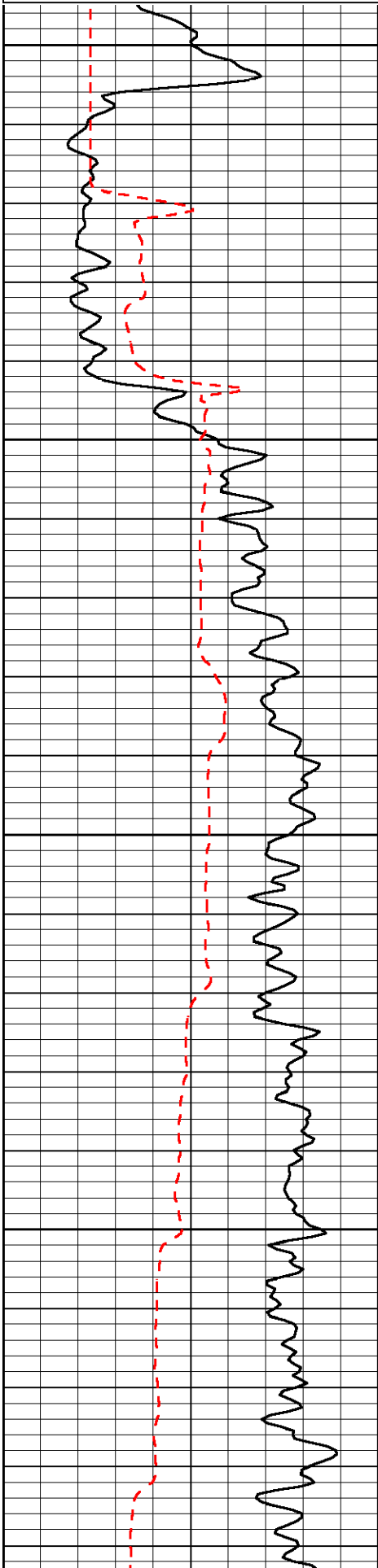
Thank you for using Log-Tech, Inc.
 (785) 625-3858

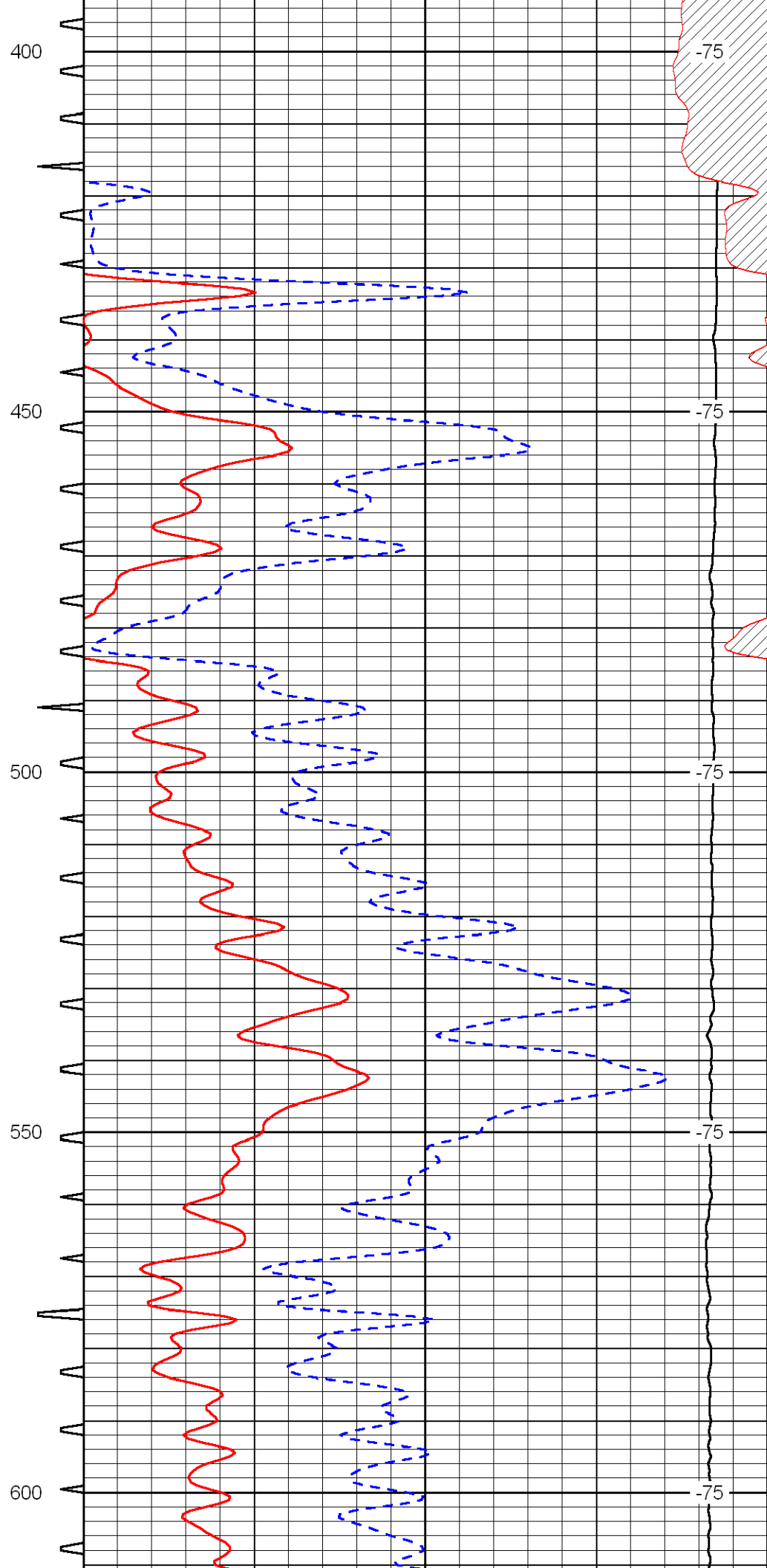
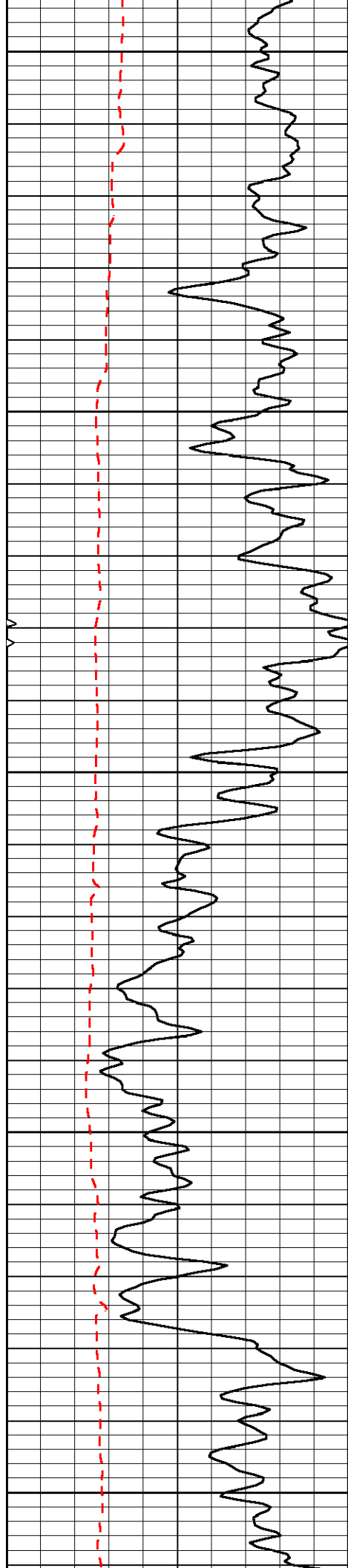
 Ellis, Ks; North to CC Rd; 7 West to 350th;
 1/2 North; West Into

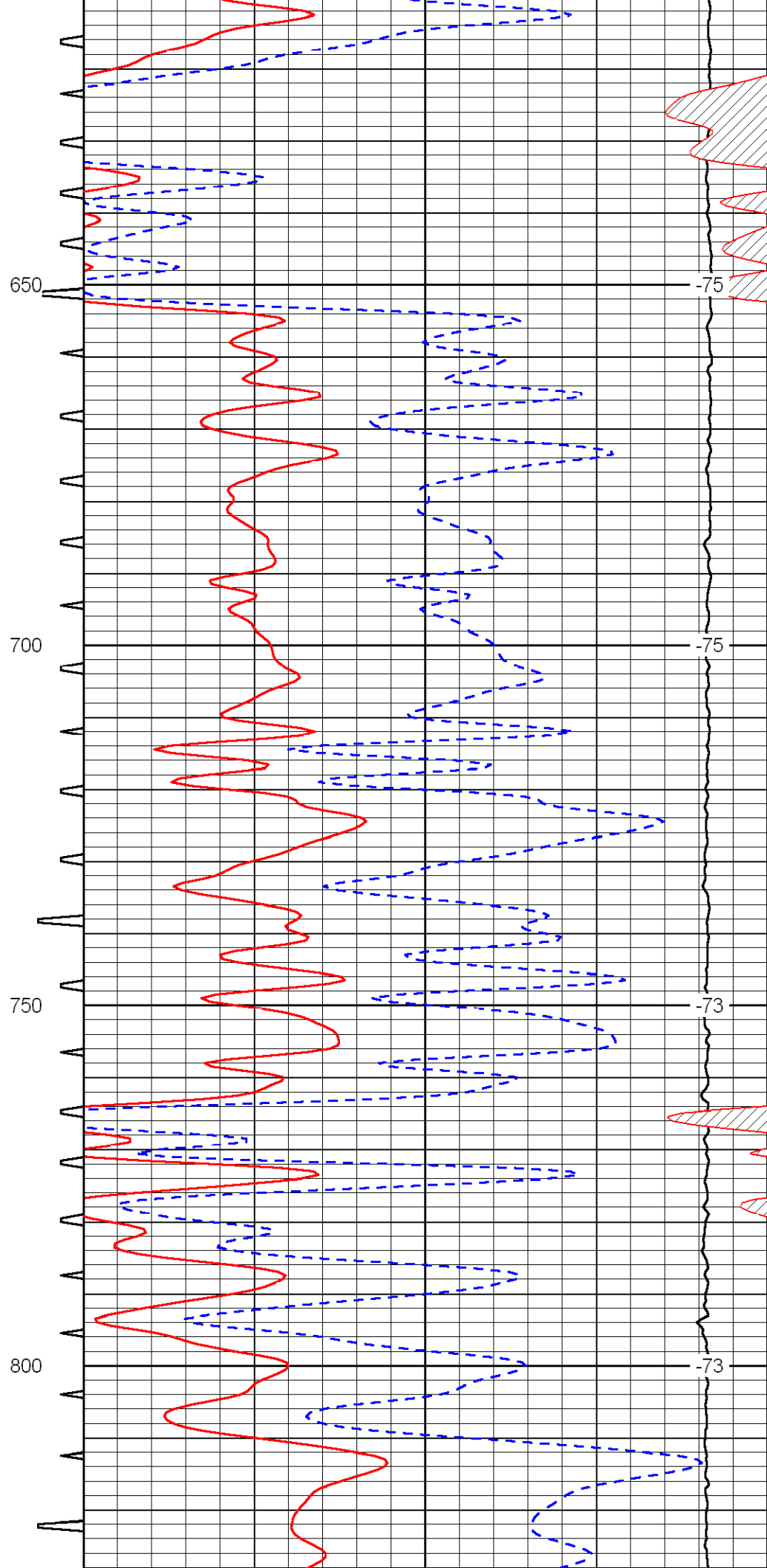
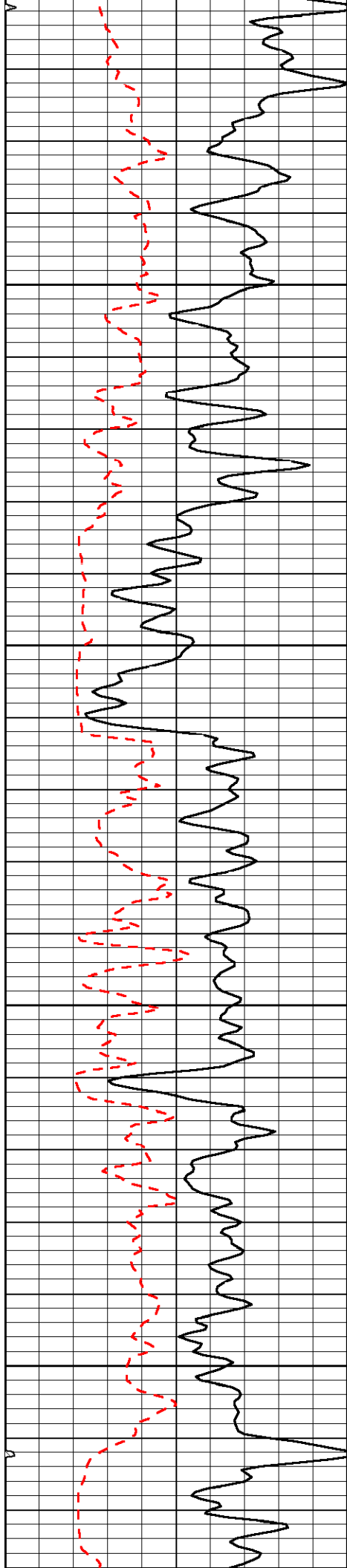
Database File: c:\warrior\data\murfin_sears mcwaller no. 1-19\murfinhd.db
 Dataset Pathname: DIL/murfstk
 Presentation Format: sonic
 Dataset Creation: Fri Dec 05 15:11:18 2008
 Charted by: Depth in Feet scaled 1:240

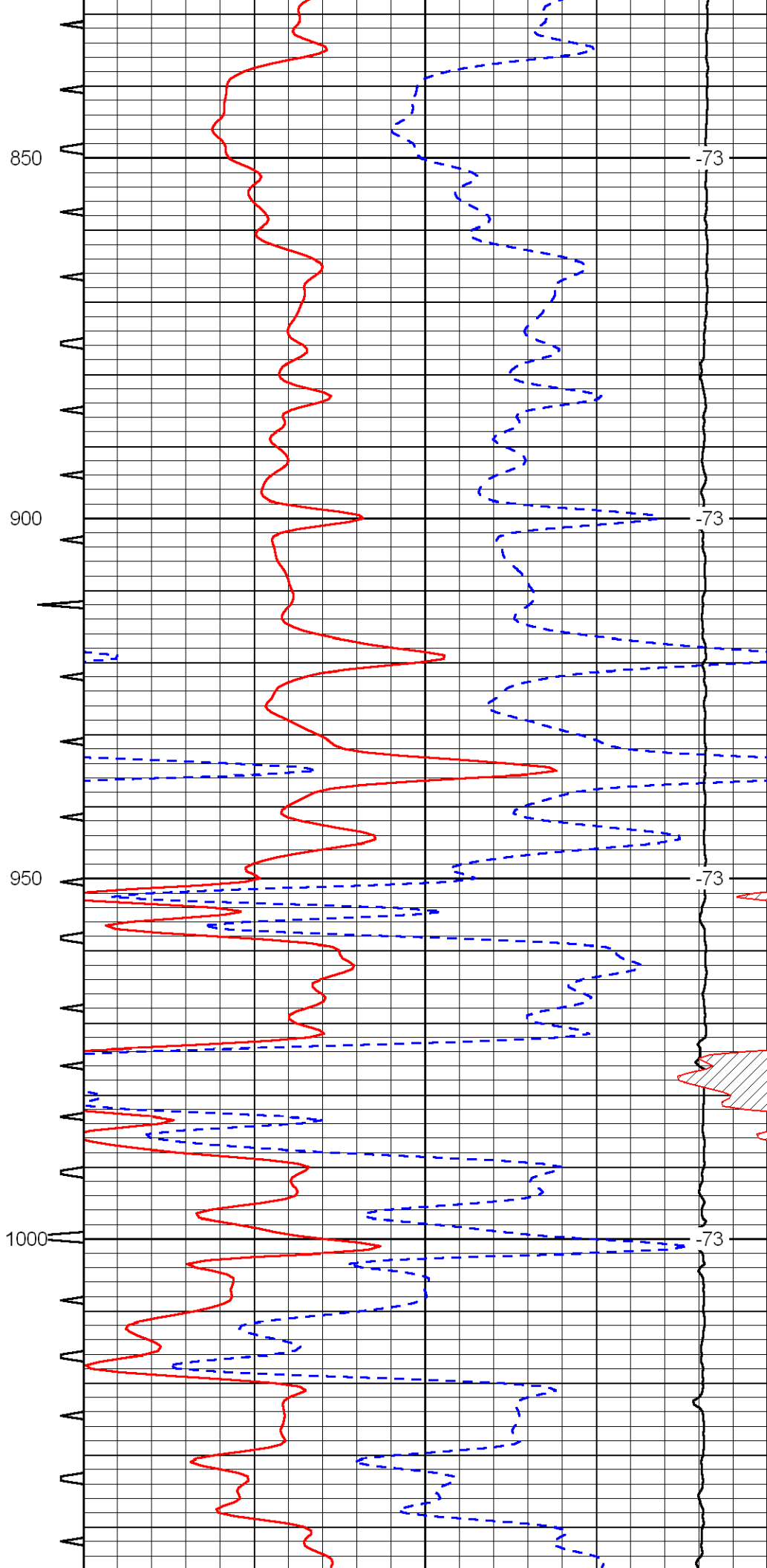
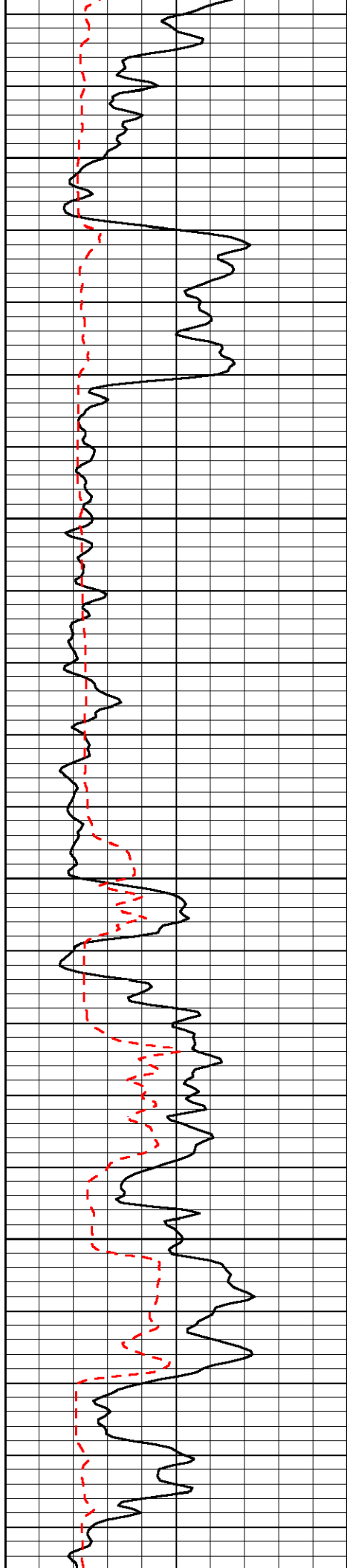
0	Gamma Ray	150	Sonic Int	140	Delta Time (usec/ft)	40
150	Gamma Ray	300	5	0	SPOR	-10
6	Caliper (GAPI)	16		10000	LTEN (lb)	0

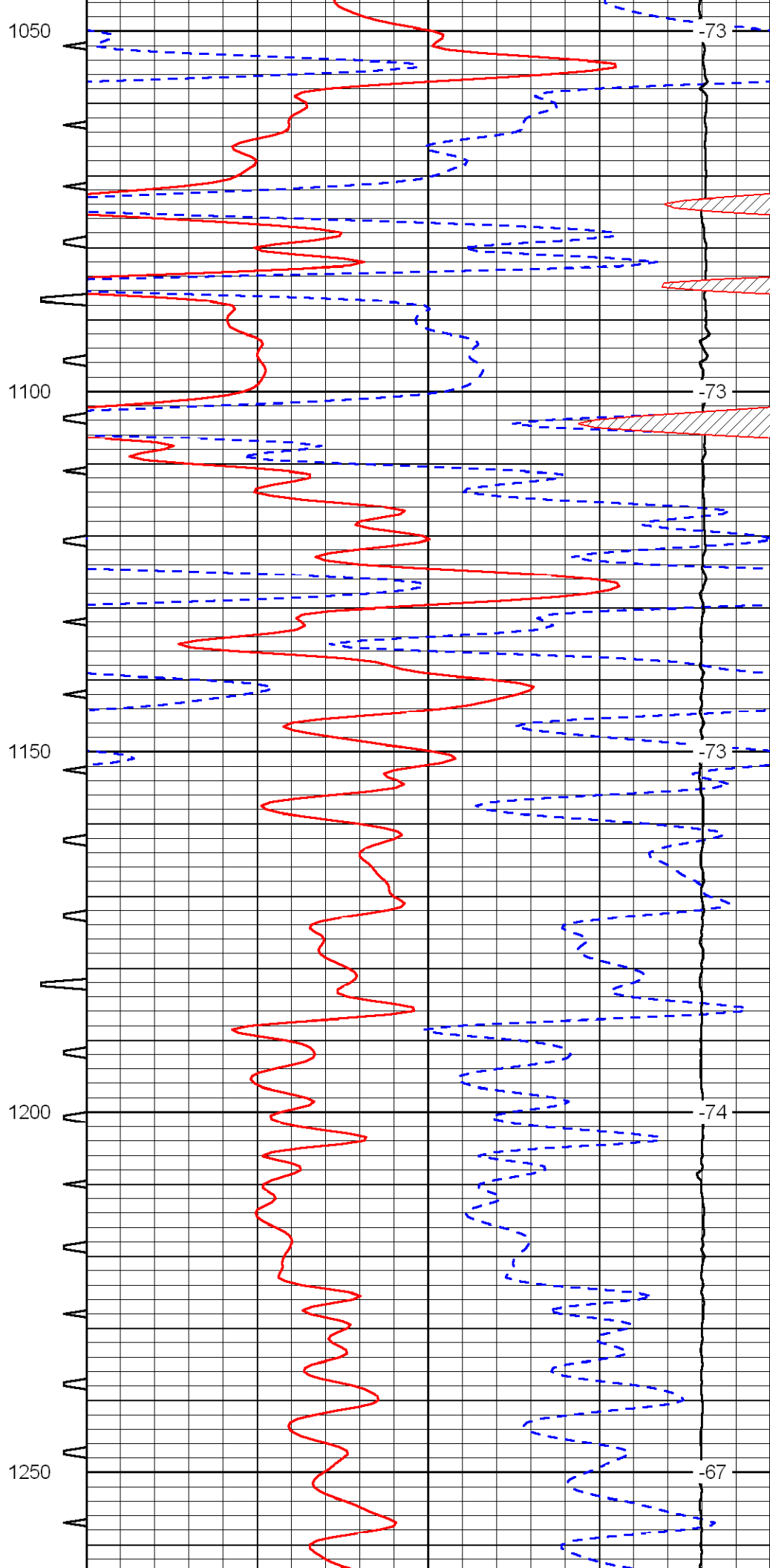
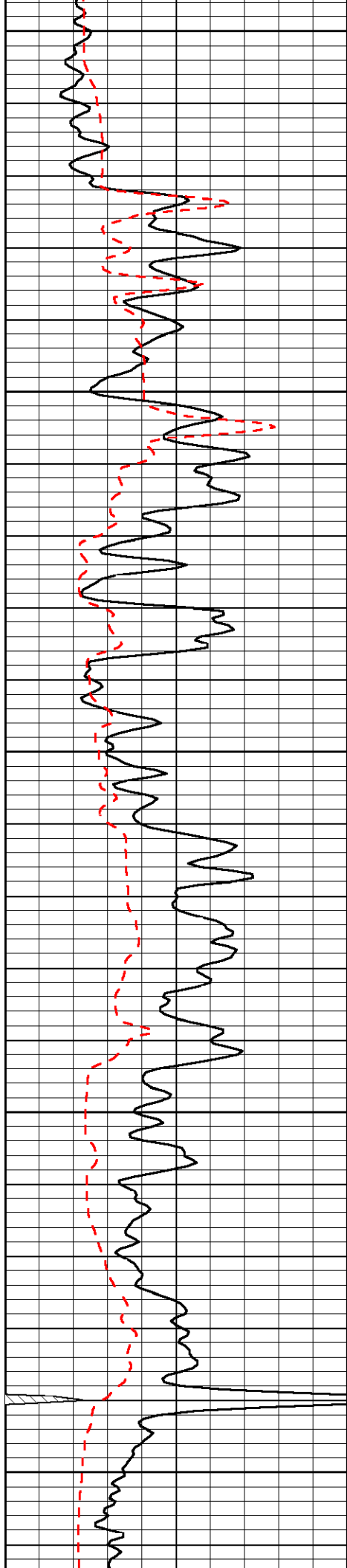
LSPD

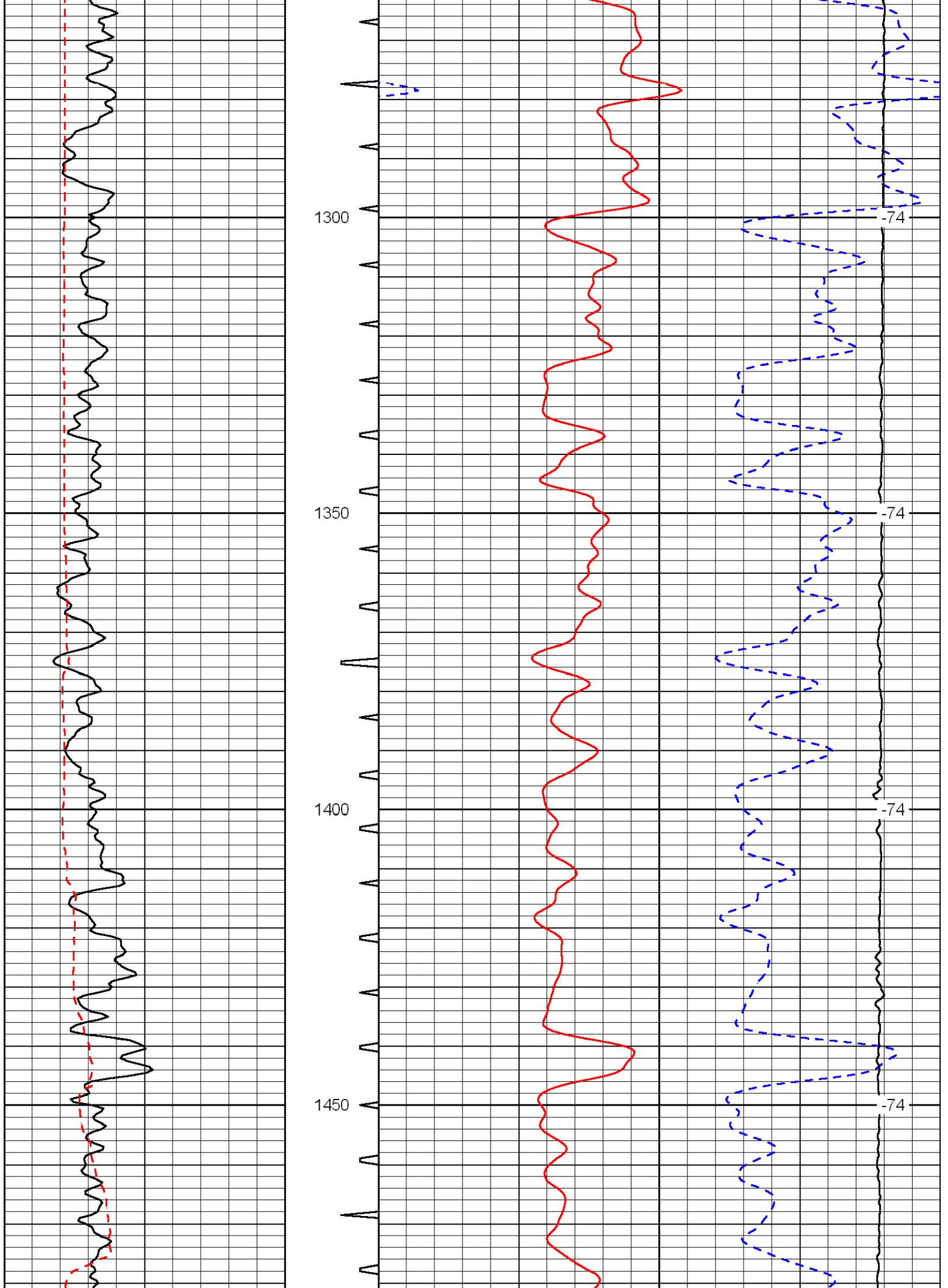


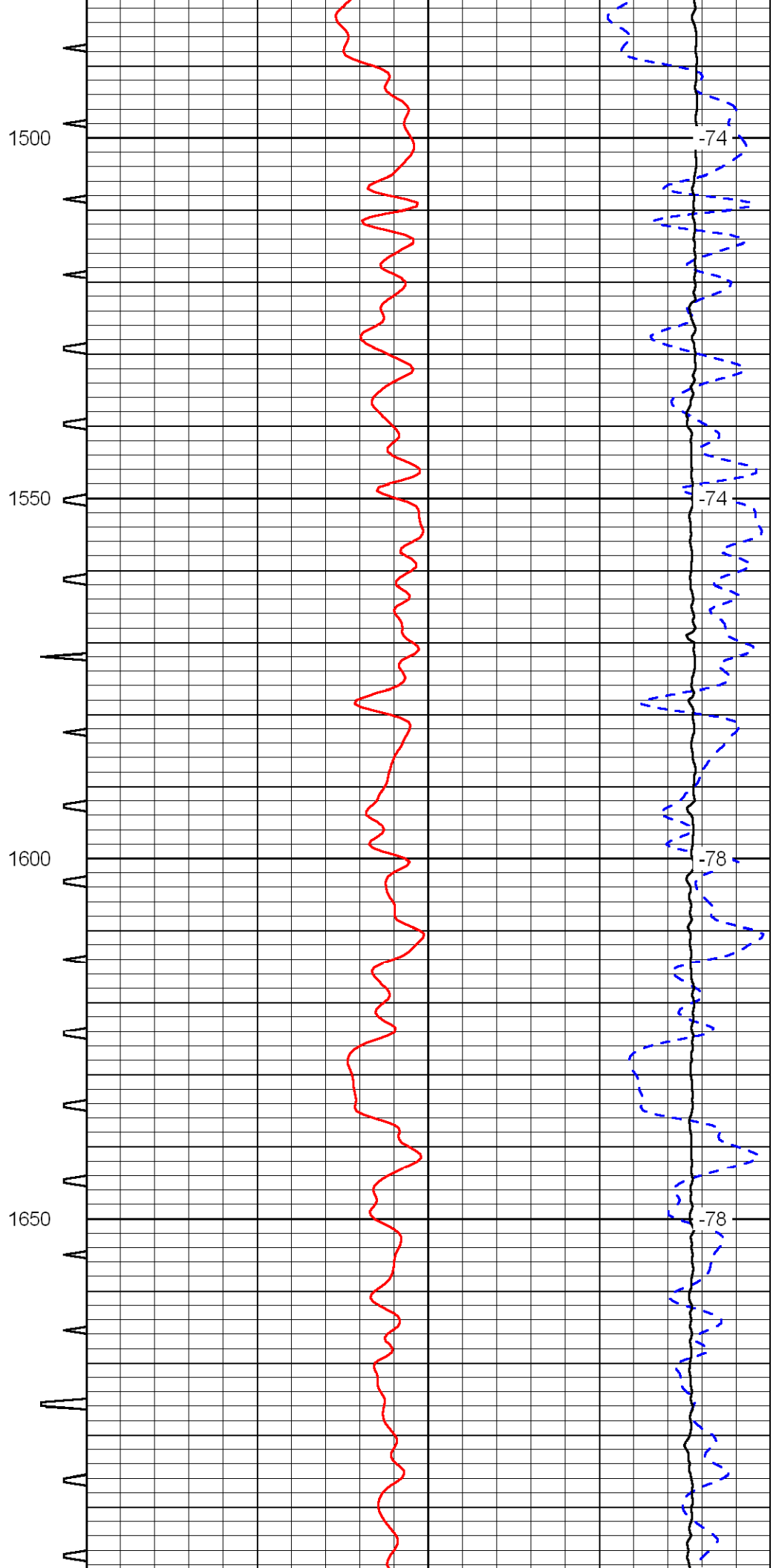
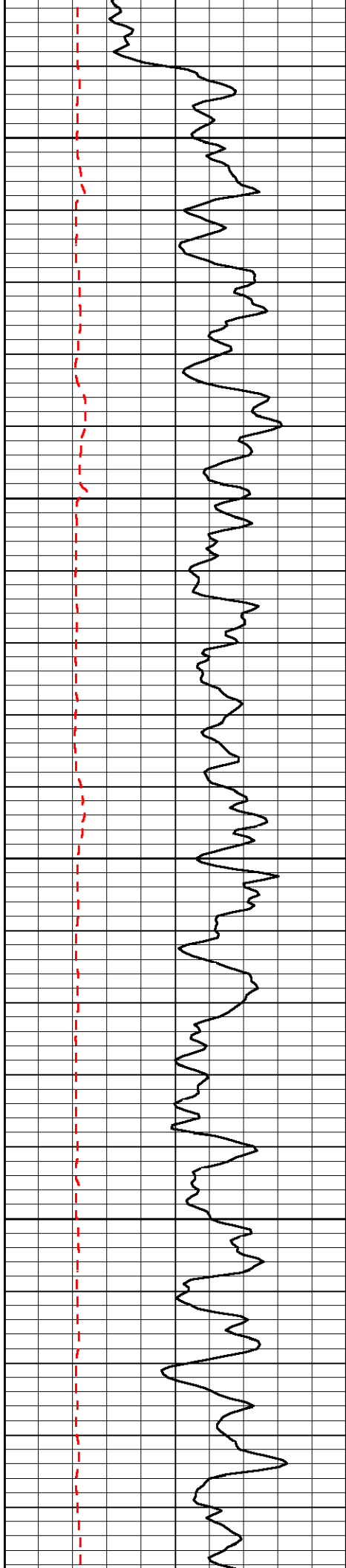


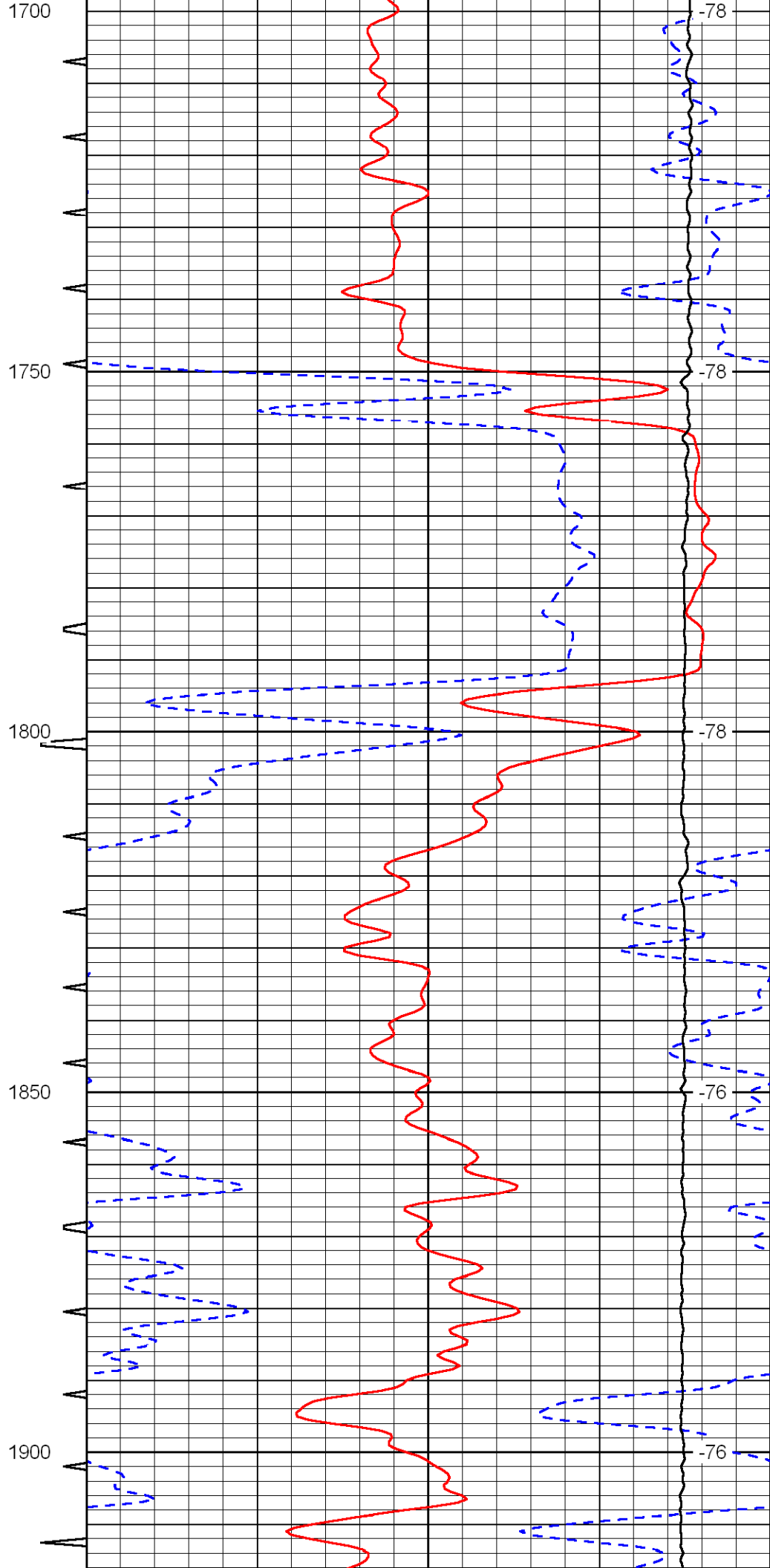
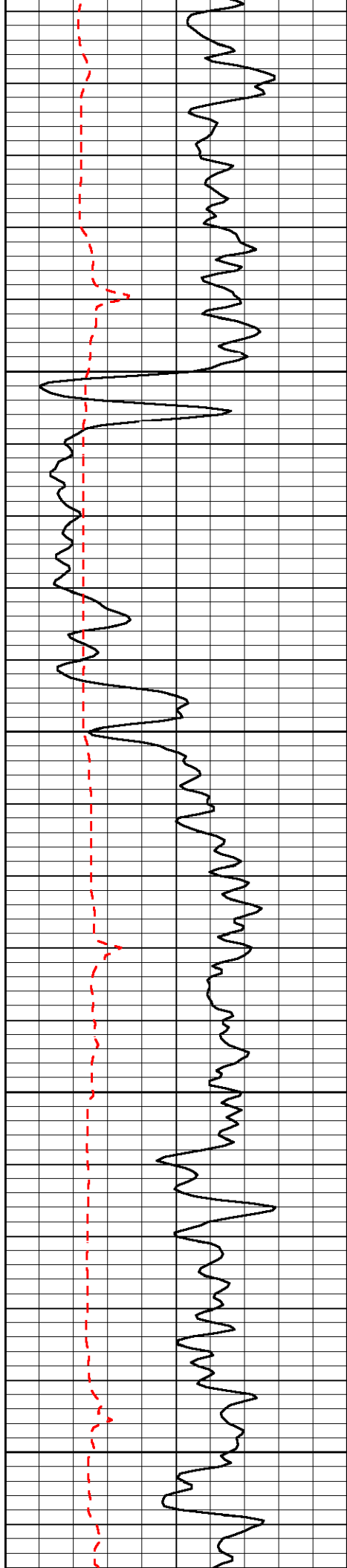


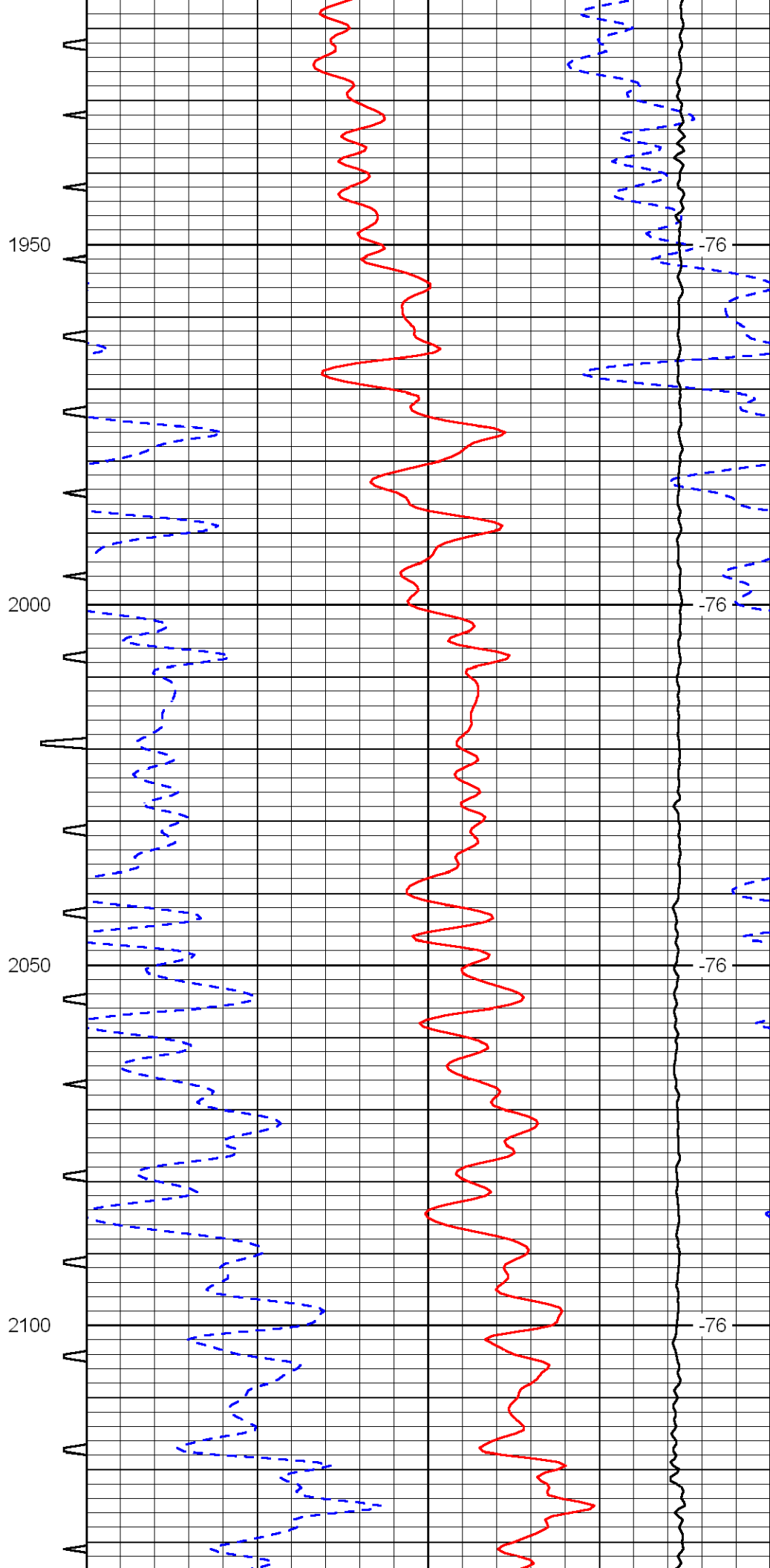
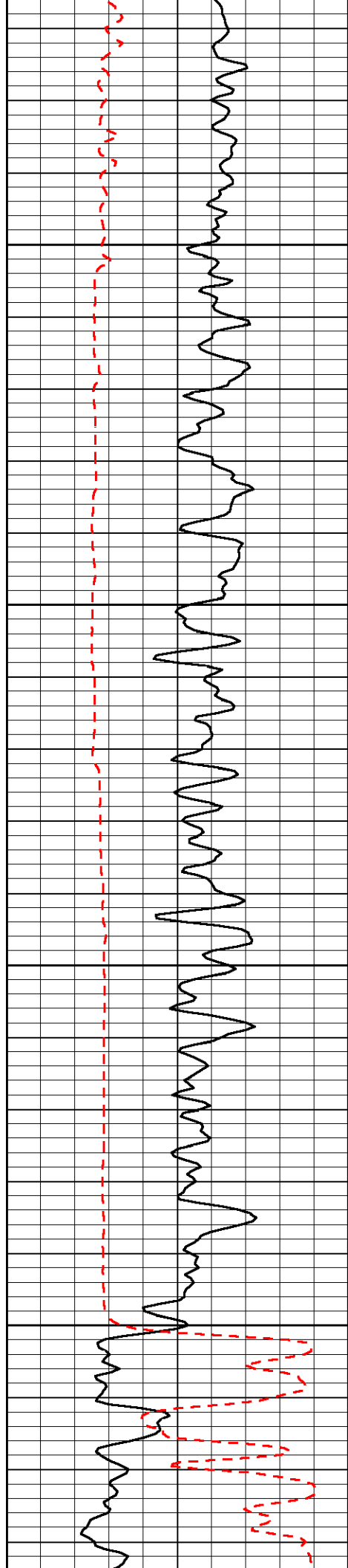


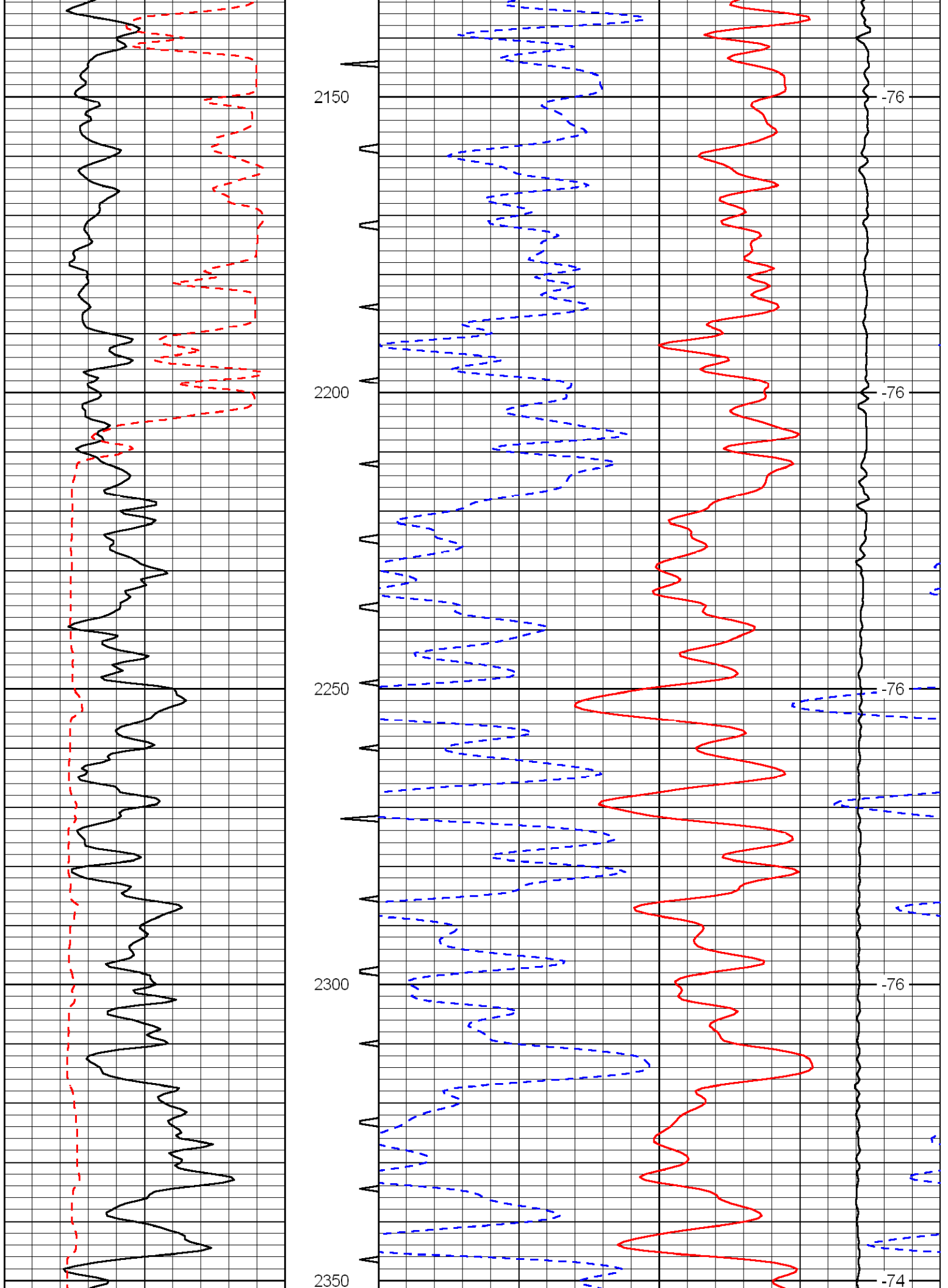


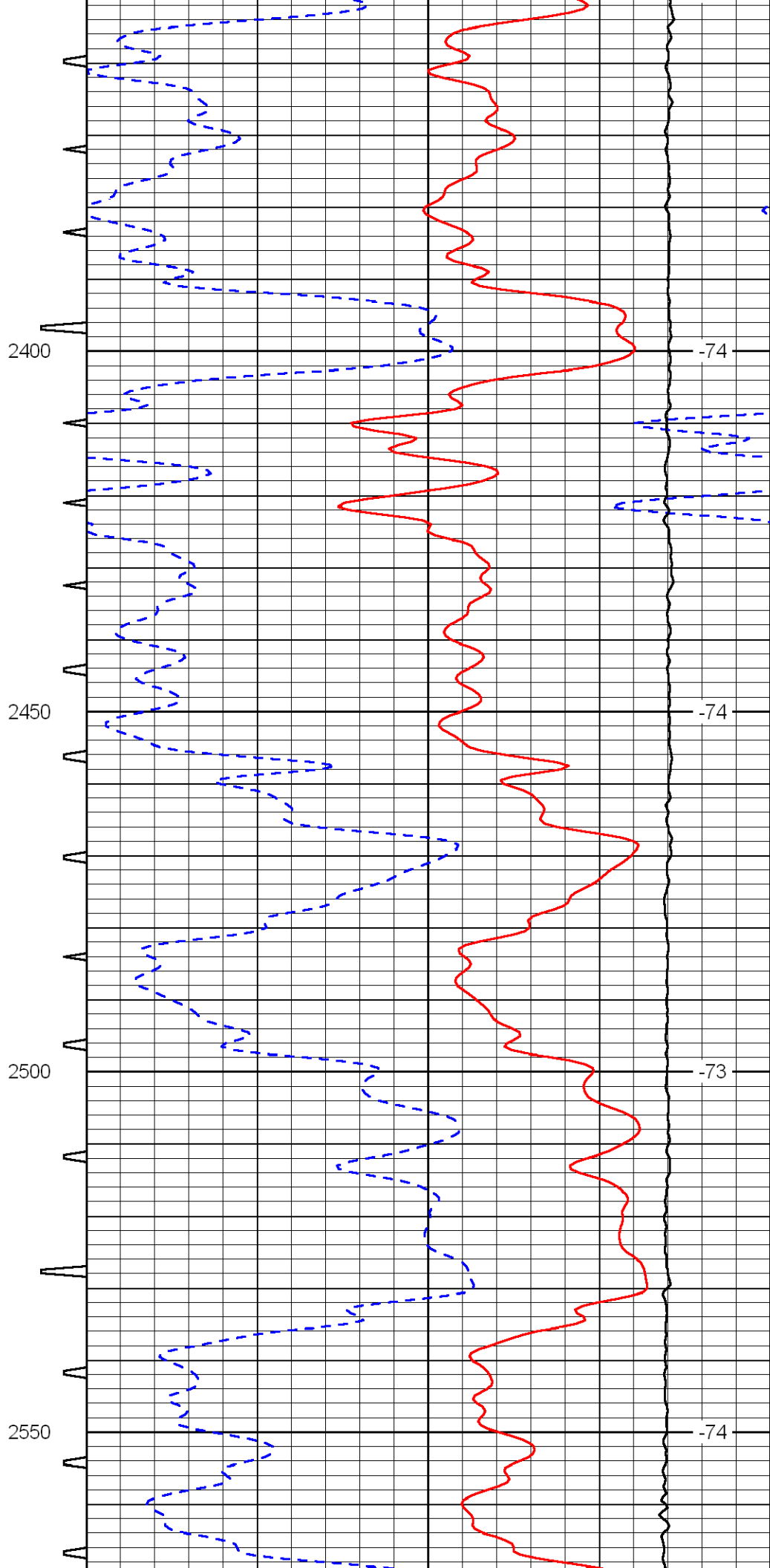
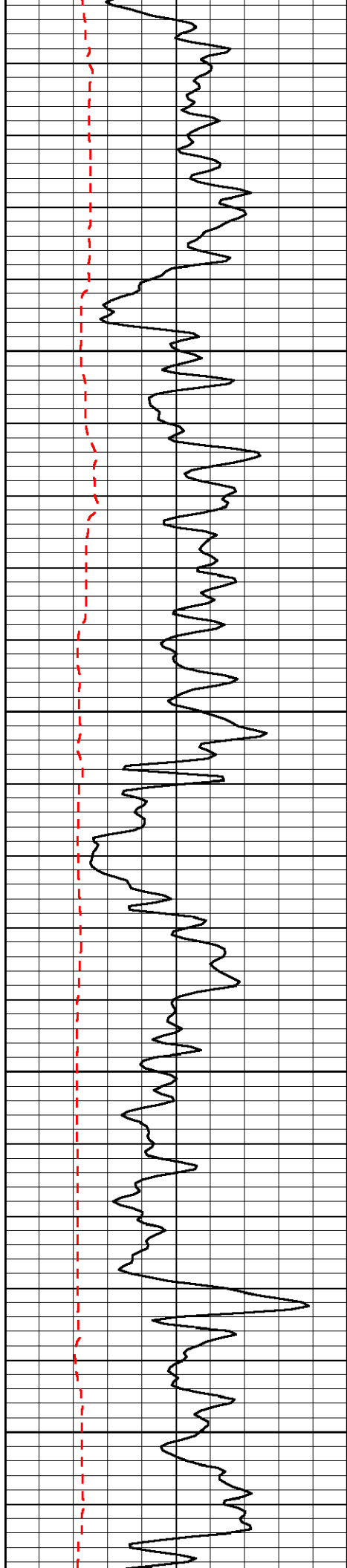


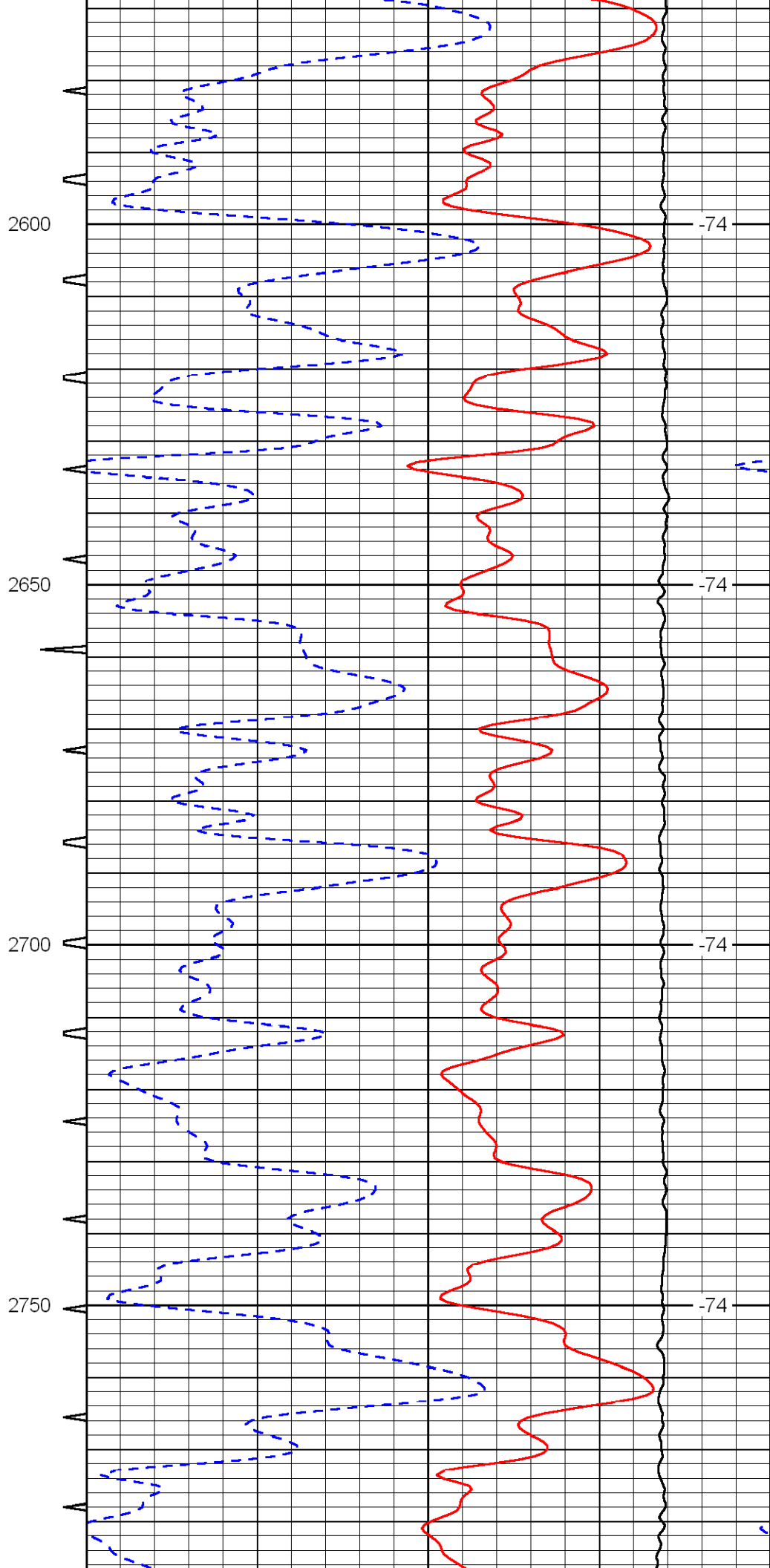
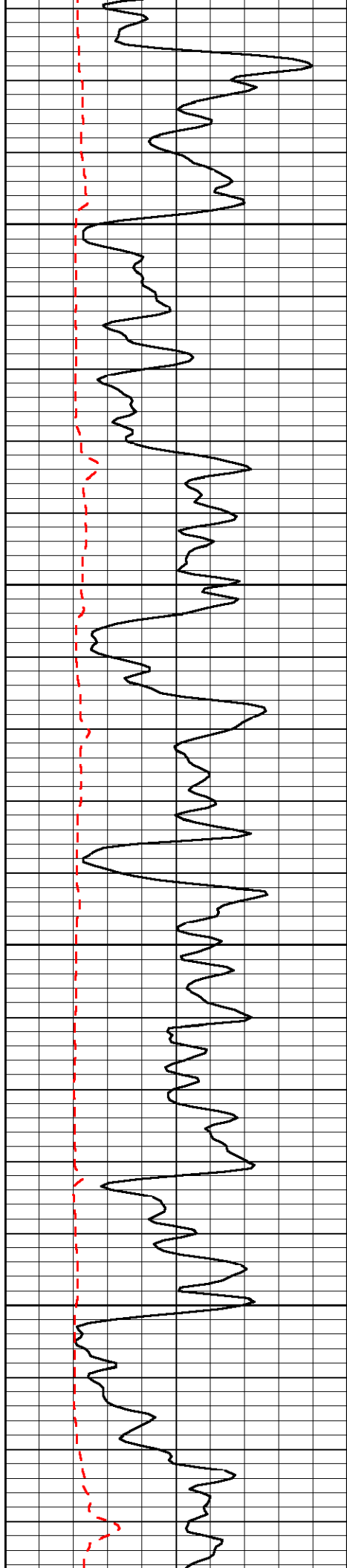


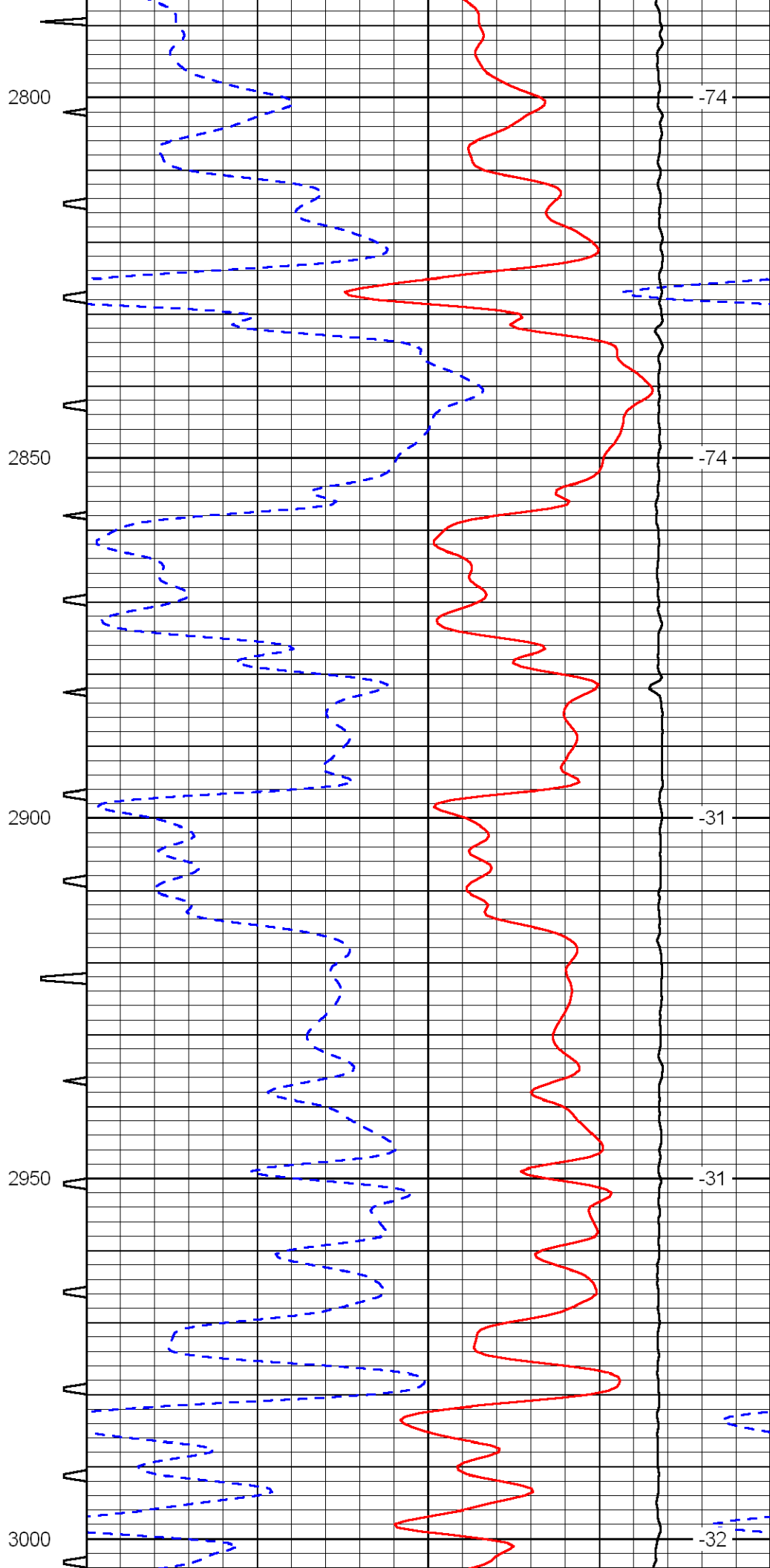
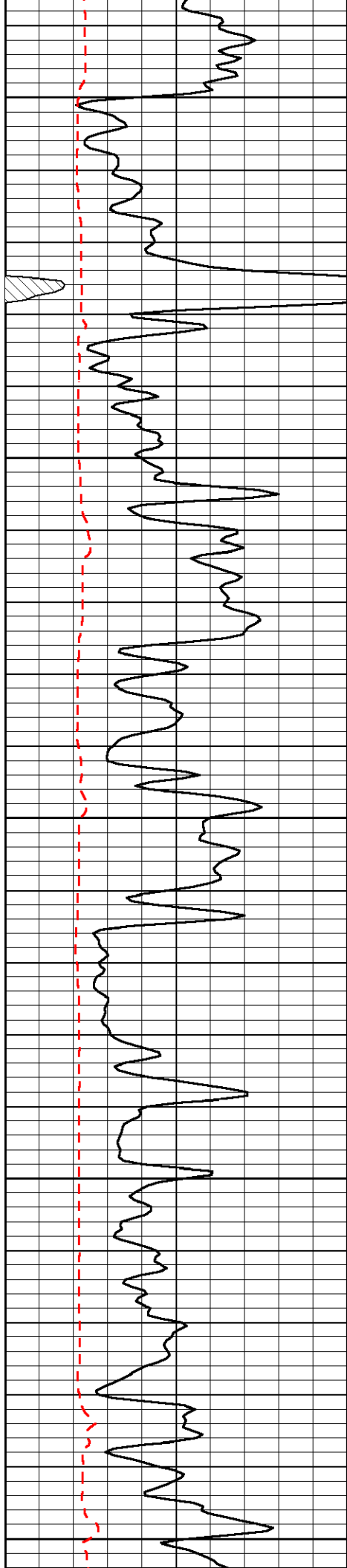


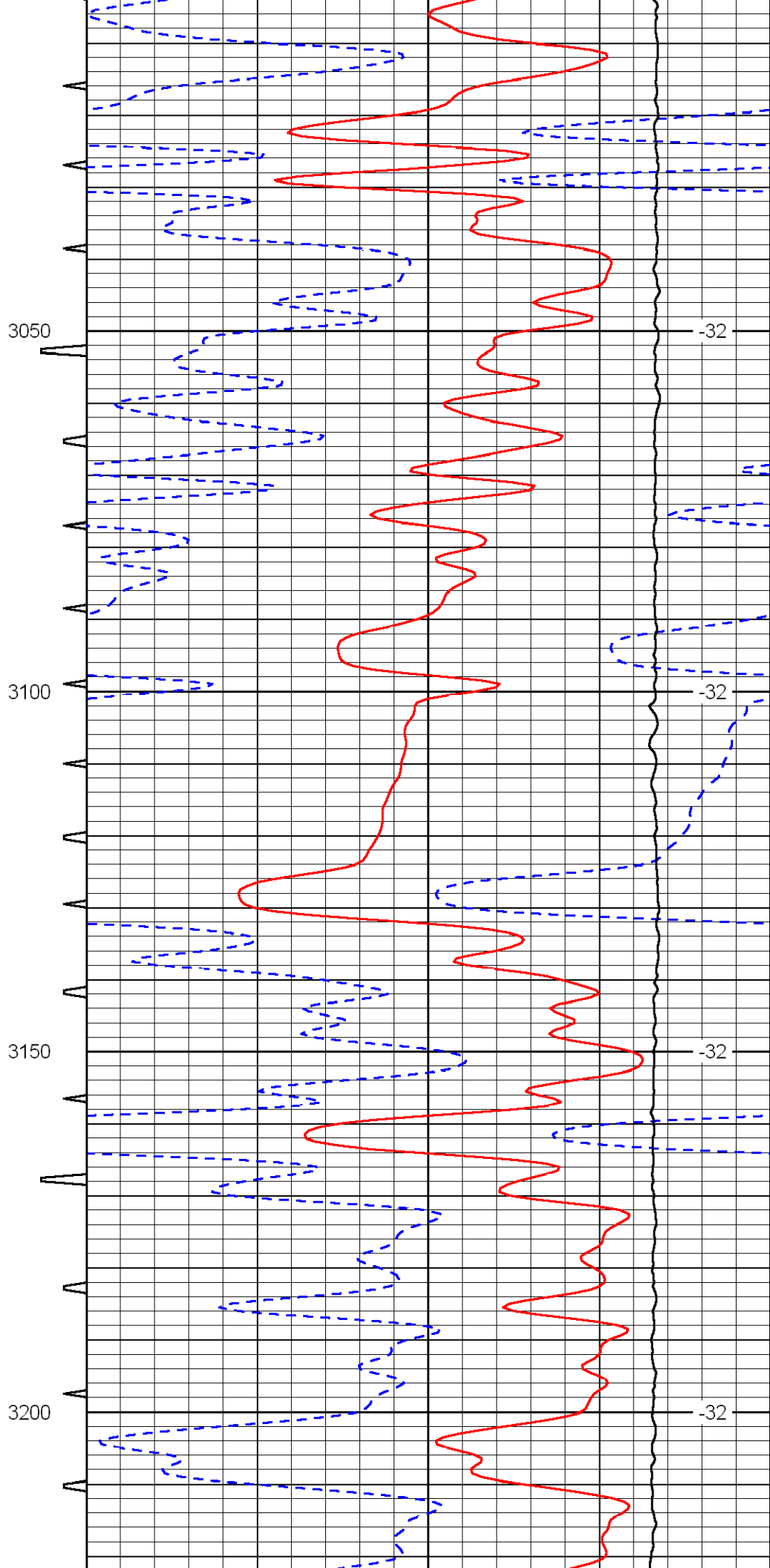
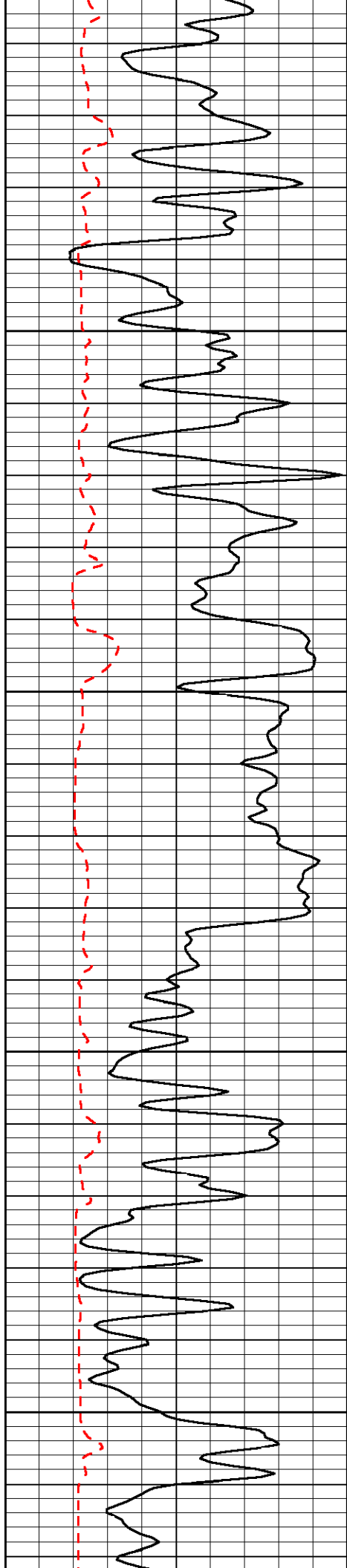


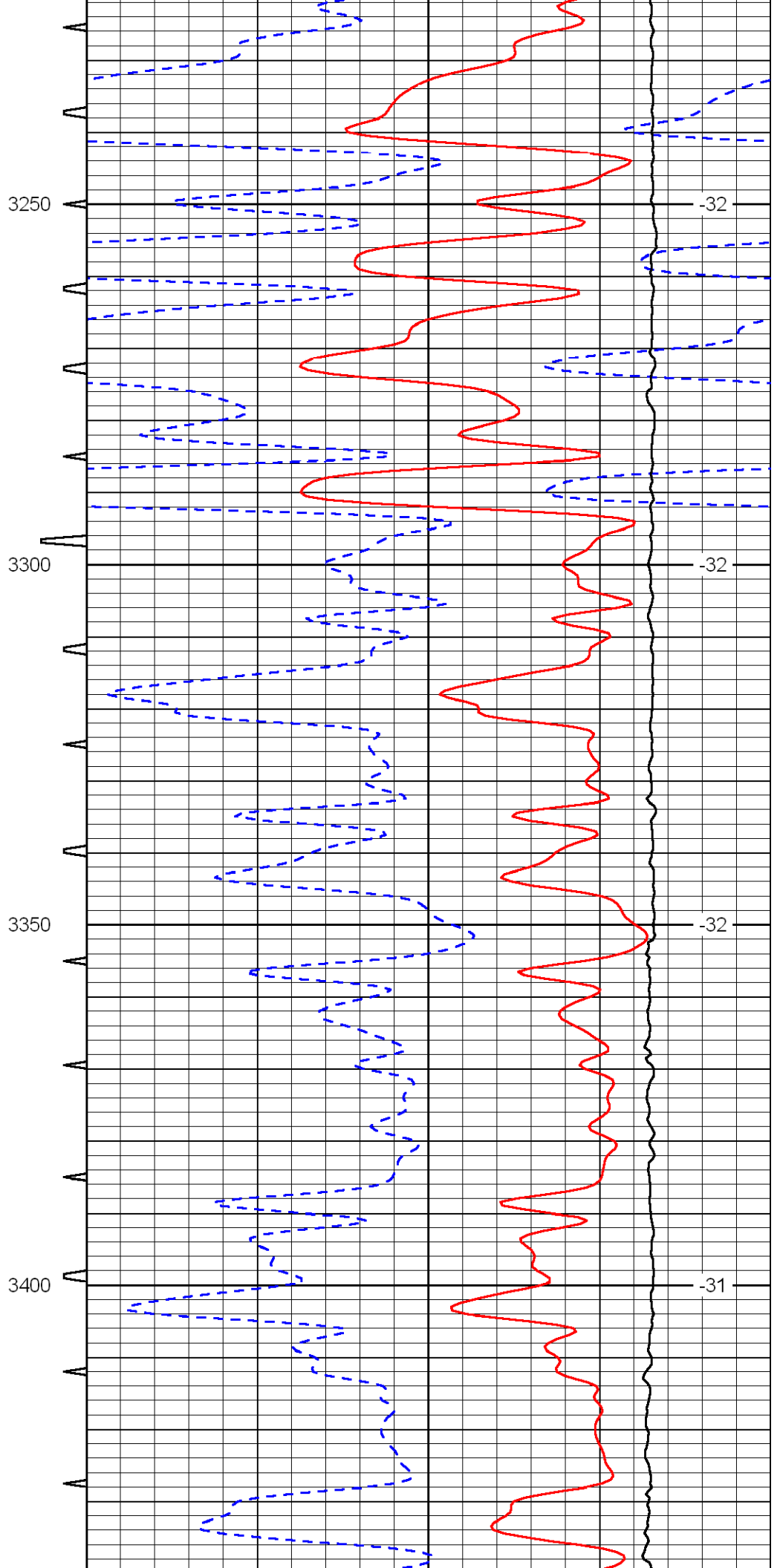
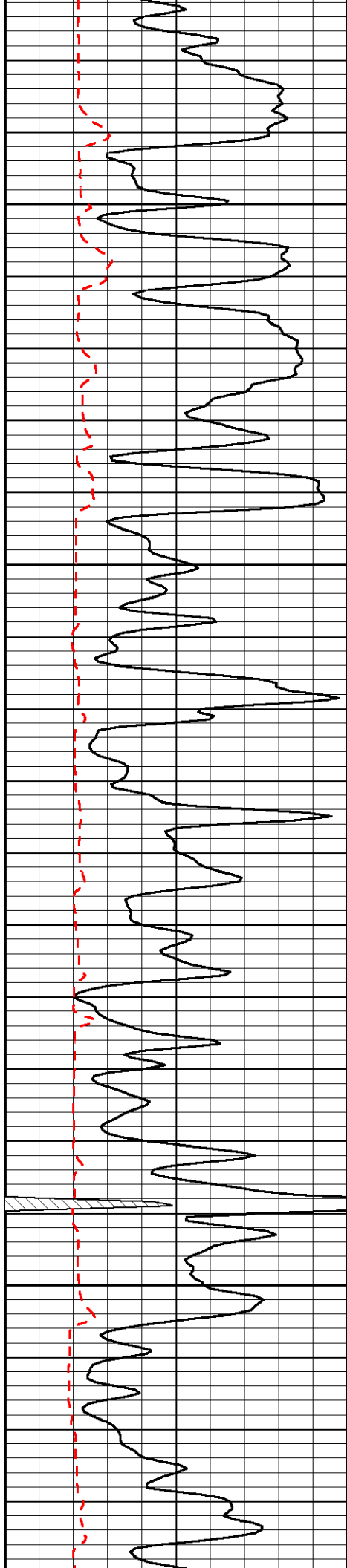












3250

-32

3300

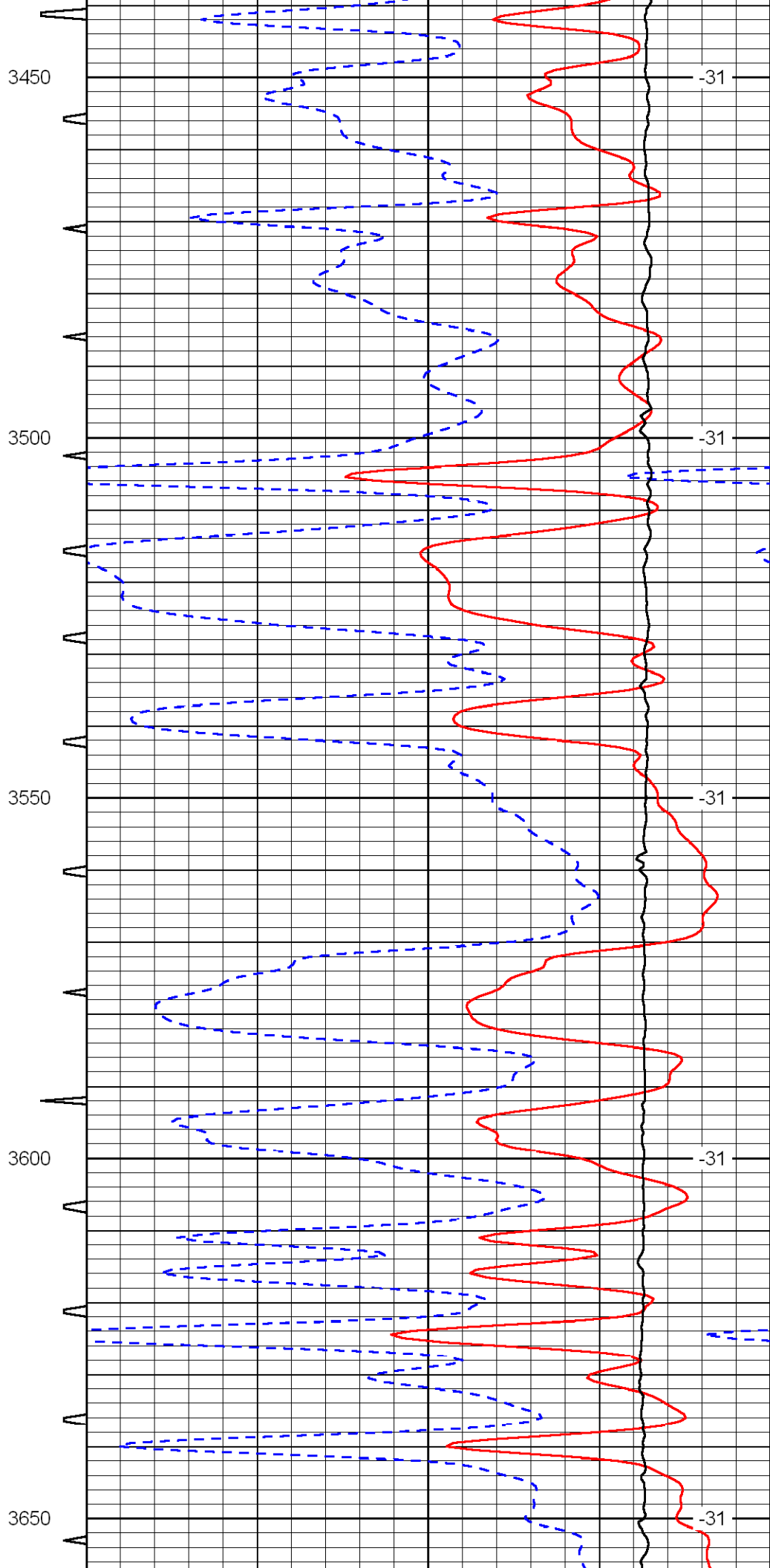
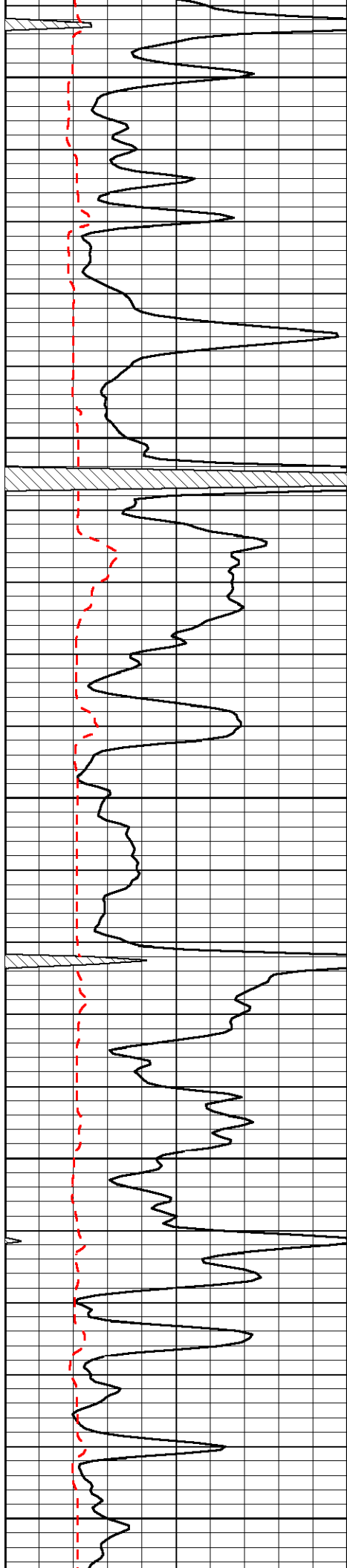
-32

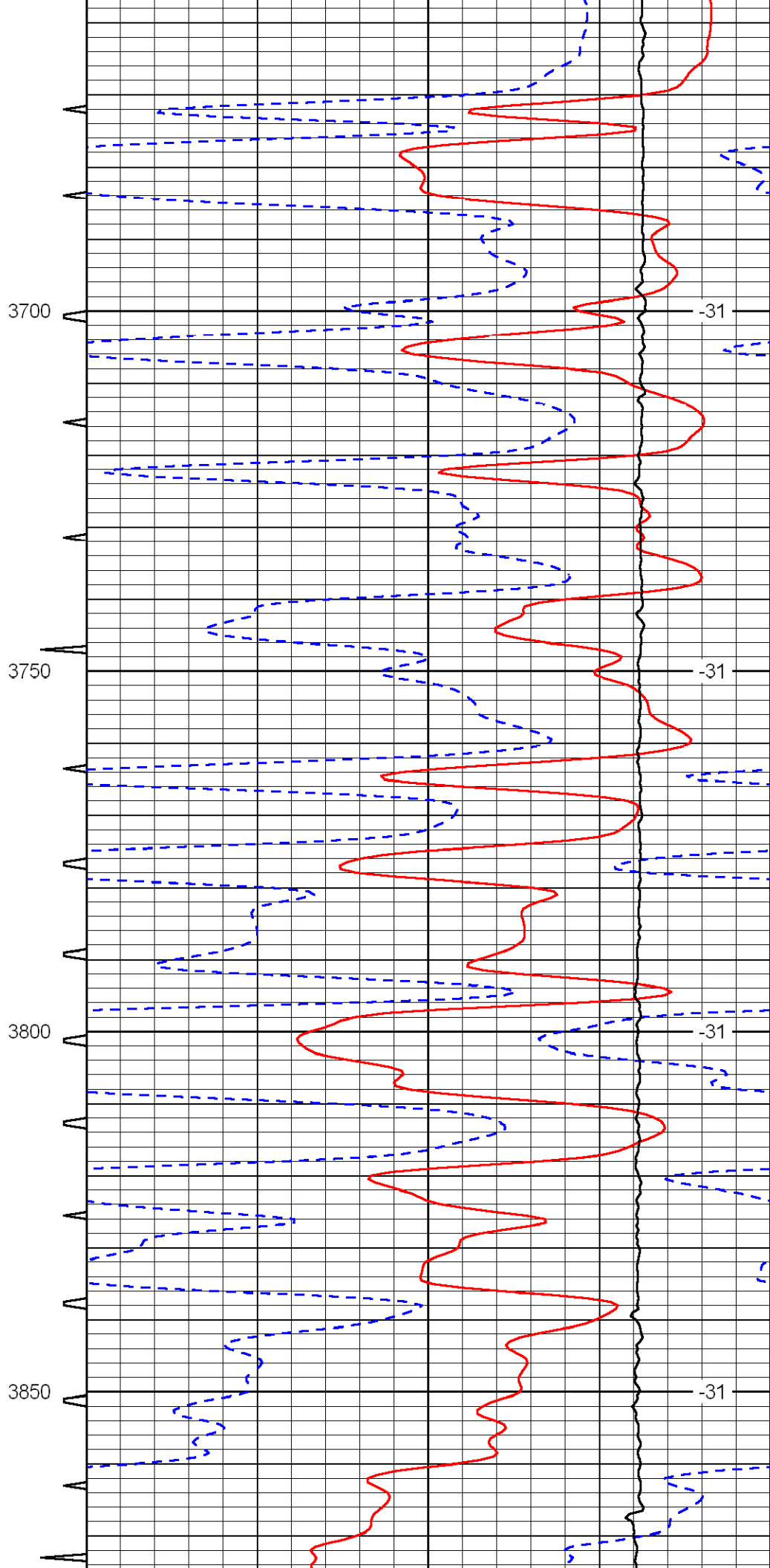
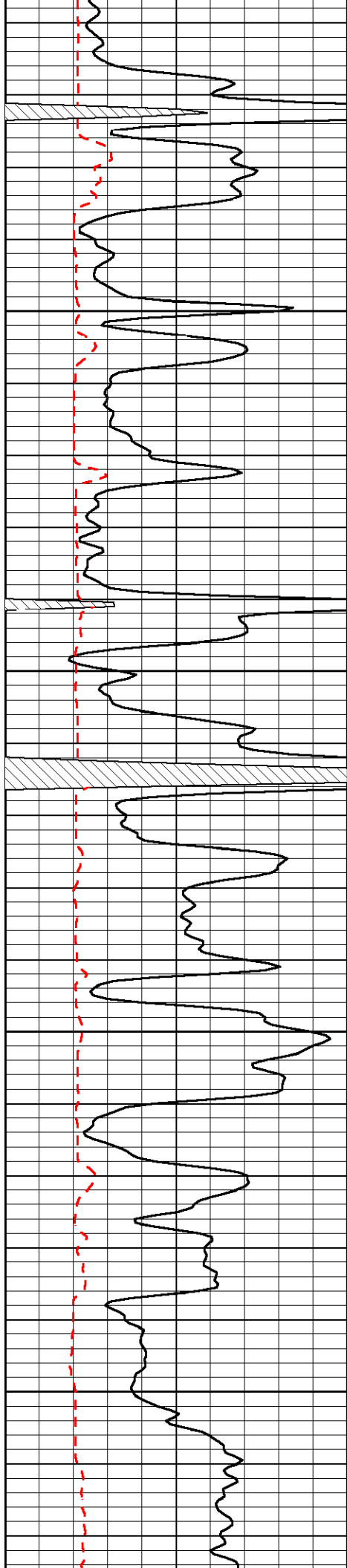
3350

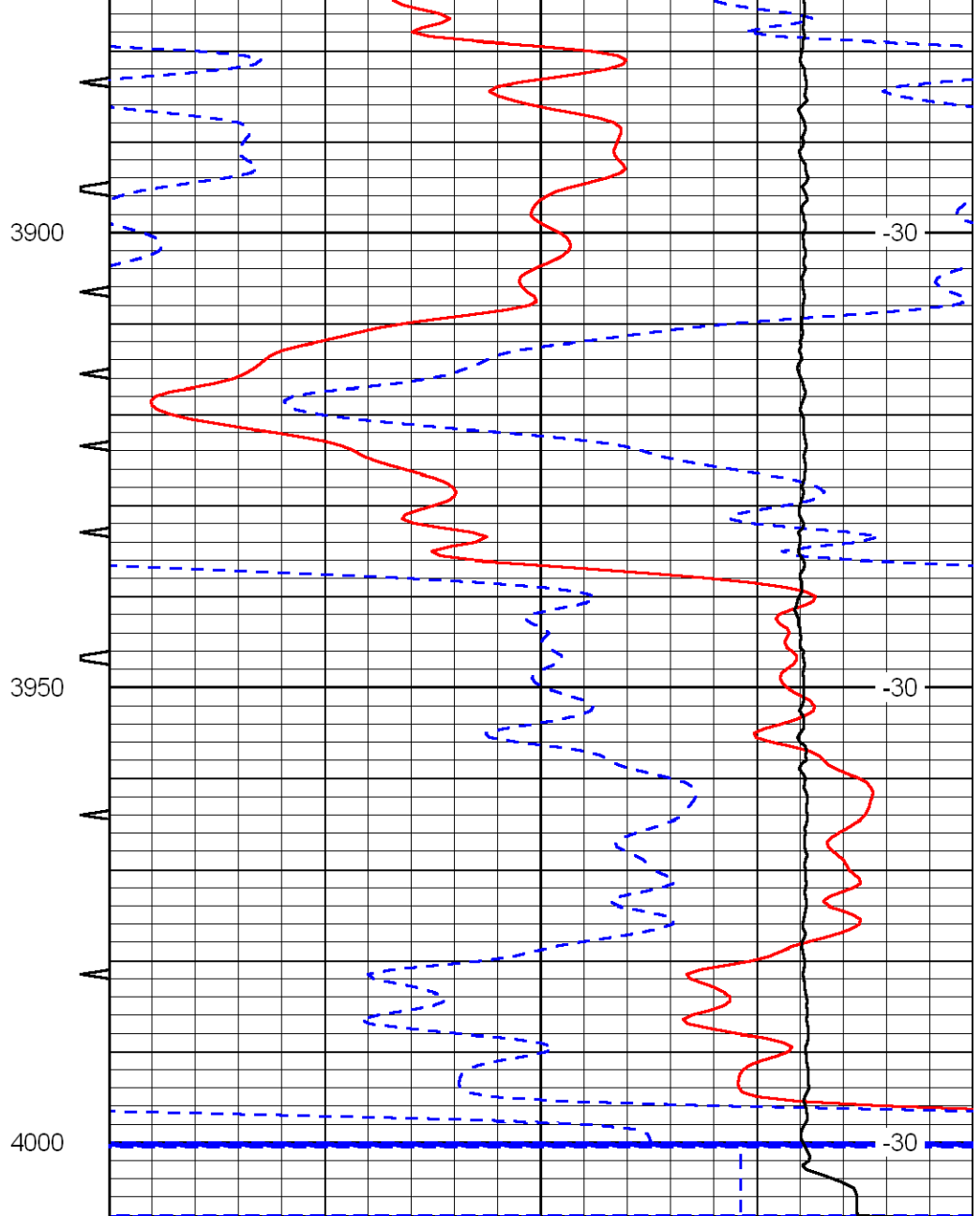
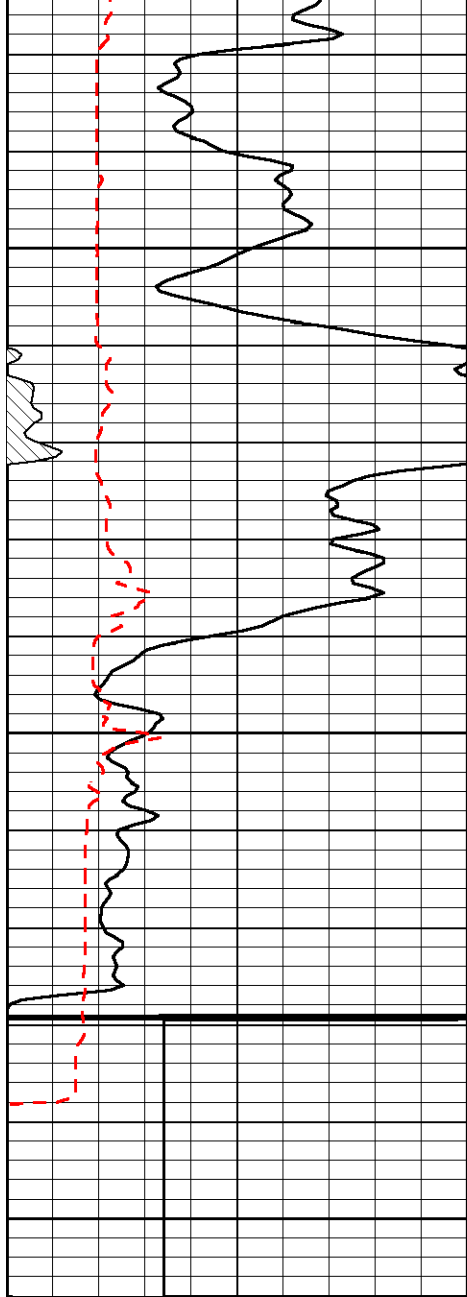
-32

3400

-31







0	Gamma Ray	150	Sonic Int	140	Delta Time (usec/ft)	40
150	Gamma Ray	300	5	0	SPOR	-10
6	Caliper (GAPI)	16		10000	LTEN (lb)	0
LSPD						