



Dual Compensated Porosity Log

DIGITAL LOG (785) 625-3858

API No. 15-065-23,509-00-00	Company Murfin Drilling Company, Inc. Well Sears McWaller No. 1-19 Field Nora County Graham State Kansas	Location E/2 - NW - SE - NW 1650' FNL & 1850' FWL Sec: 19 Twp: 10 S Rge: 21 W
Permanent Datum	Ground Level	Elevation 2257
Log Measured From	Kelly Bushing	5 Ft. Above Perm. Datum
Drilling Measured From	Kelly Bushing	
		Other Services DIL MEL/BHCS
		Elevation K.B. 2262 D.F. G.L. 2257

Date	12/5/2008					
Run Number	One					
Type Log	CNL / CDL					
Depth Driller	4003					
Depth Logger	4003					
Bottom Logged Interval	3982					
Top Logged Interval	3000					
Type Fluid In Hole	Chemical					
Salinity, PPM CL	2,600					
Density	9.1					
Level	Full					
Max. Rec. Temp. F	116					
Operating Rig Time	5 Hours					
Equipment -- Location	15 Hays					
Recorded By	B. Becker					
Witnessed By	Kent Crisler					
Borehole Record						
Run No	Bit From	To	Size	Wgt.	Casing Record	
1	12.25	00	8.625	24#	From	To
2	7.875	219	4003			

<<< Fold Here >>>

All interpretations are opinions based on inferences from electrical or other measurements and we cannot and do not guarantee the accuracy or correctness of any interpretation, and we shall not, except in the case of gross or willful negligence on our part, be liable or responsible for any loss, costs, damages, or expenses incurred or sustained by anyone resulting from any interpretation made by any of our officers, agents or employees. These interpretations are also subject to our general terms and conditions set out in our current Price Schedule.

Comments

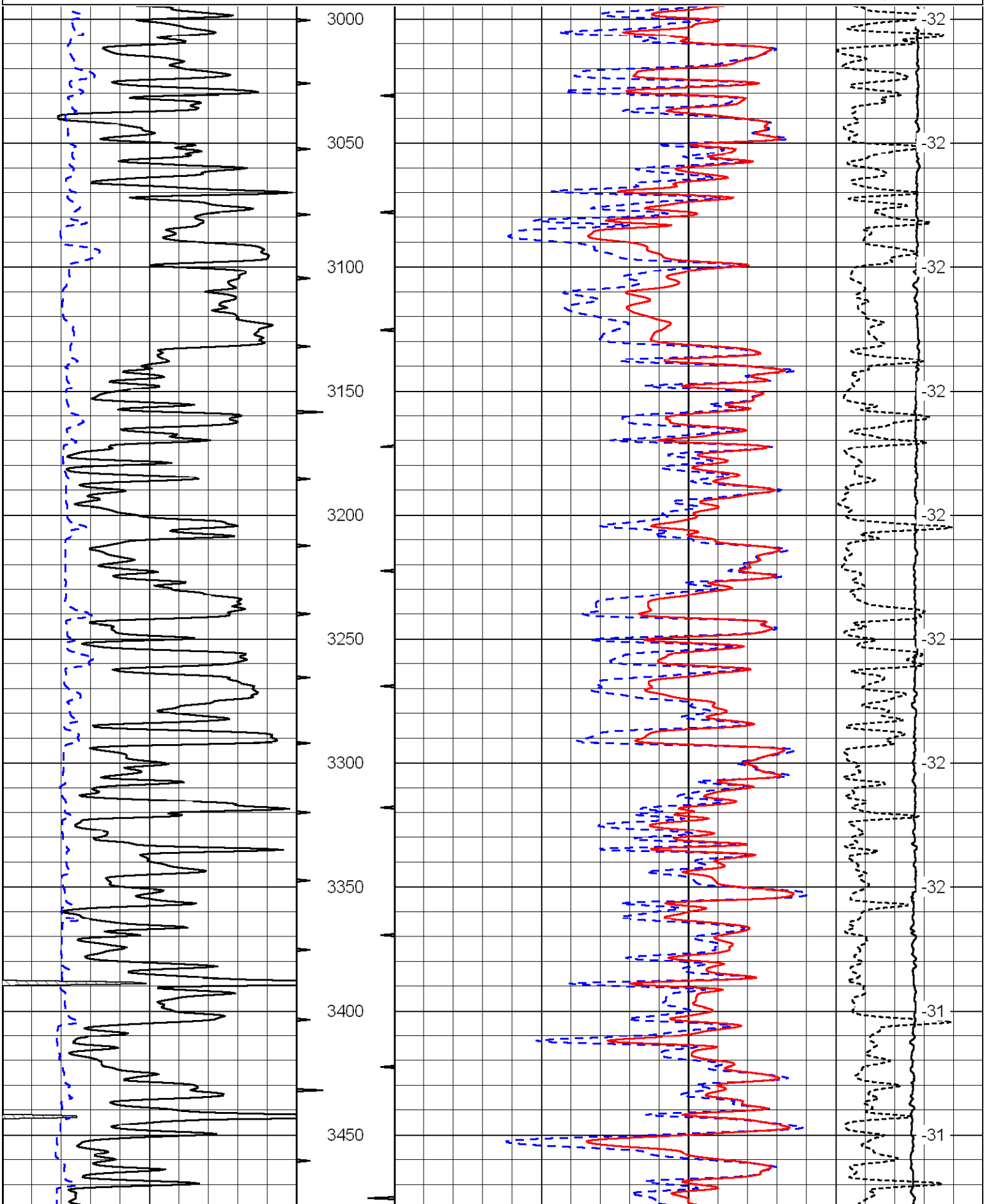
Thank you for using Log-Tech, Inc.
 (785) 625-3858

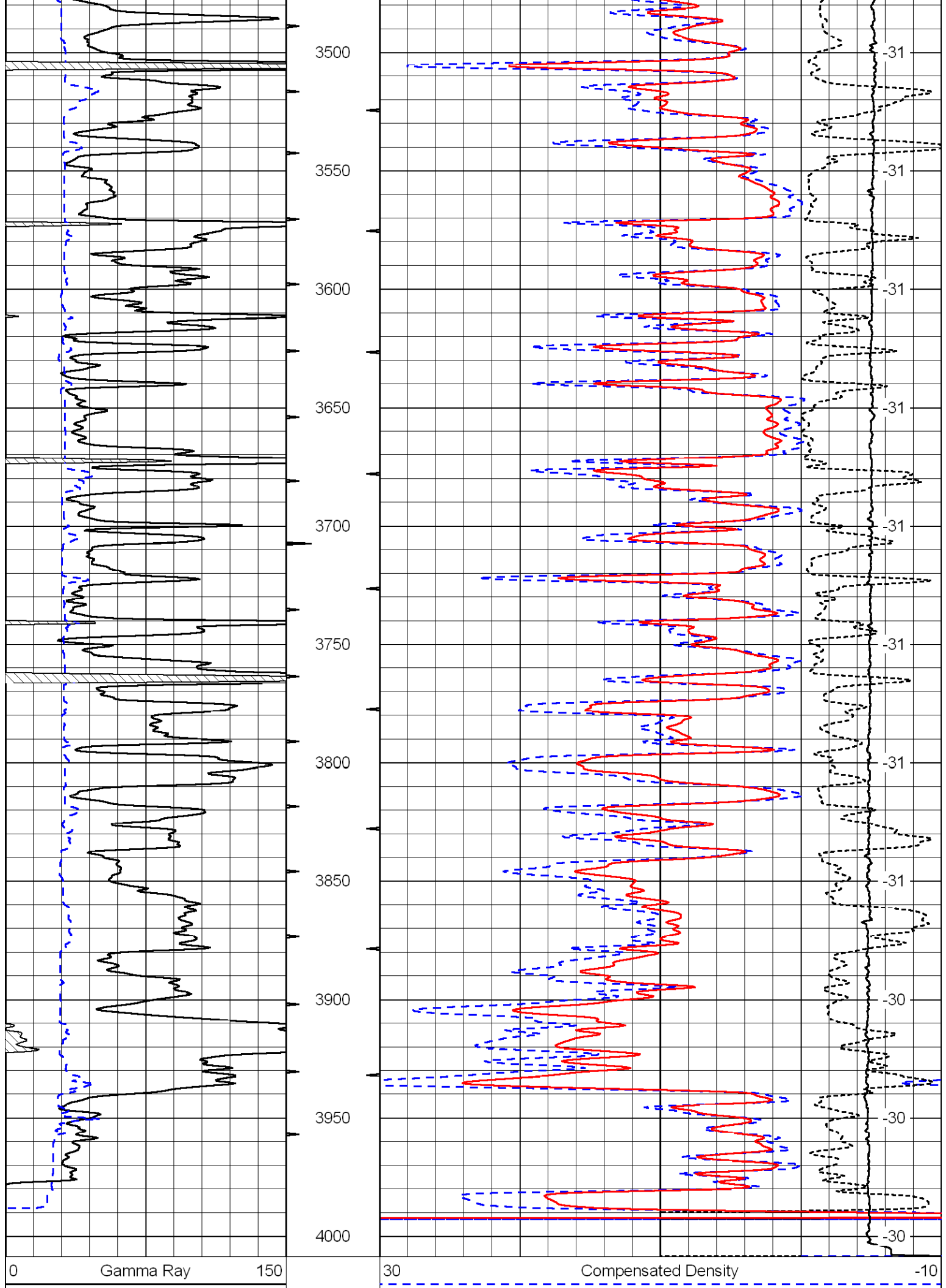
 Ellis, Ks; North to CC Rd; 7 West to 350th;
 1/2 North; West Into

Database File:	c:\warrior\data\murfin_sears mcwaller no. 1-19\murfinhd.db
Dataset Pathname:	DIL/murfstk
Presentation Format:	cdl
Dataset Creation:	Fri Dec 05 15:11:18 2008
Charted by:	Depth in Feet scaled 1:600

0	Gamma Ray	150
6	Caliper (GAPI)	16

30	Compensated Density	-10
2	Bulk Density	3
15000	Line Tension	0
	-0.25	0.25
	Correction	
		LSPD





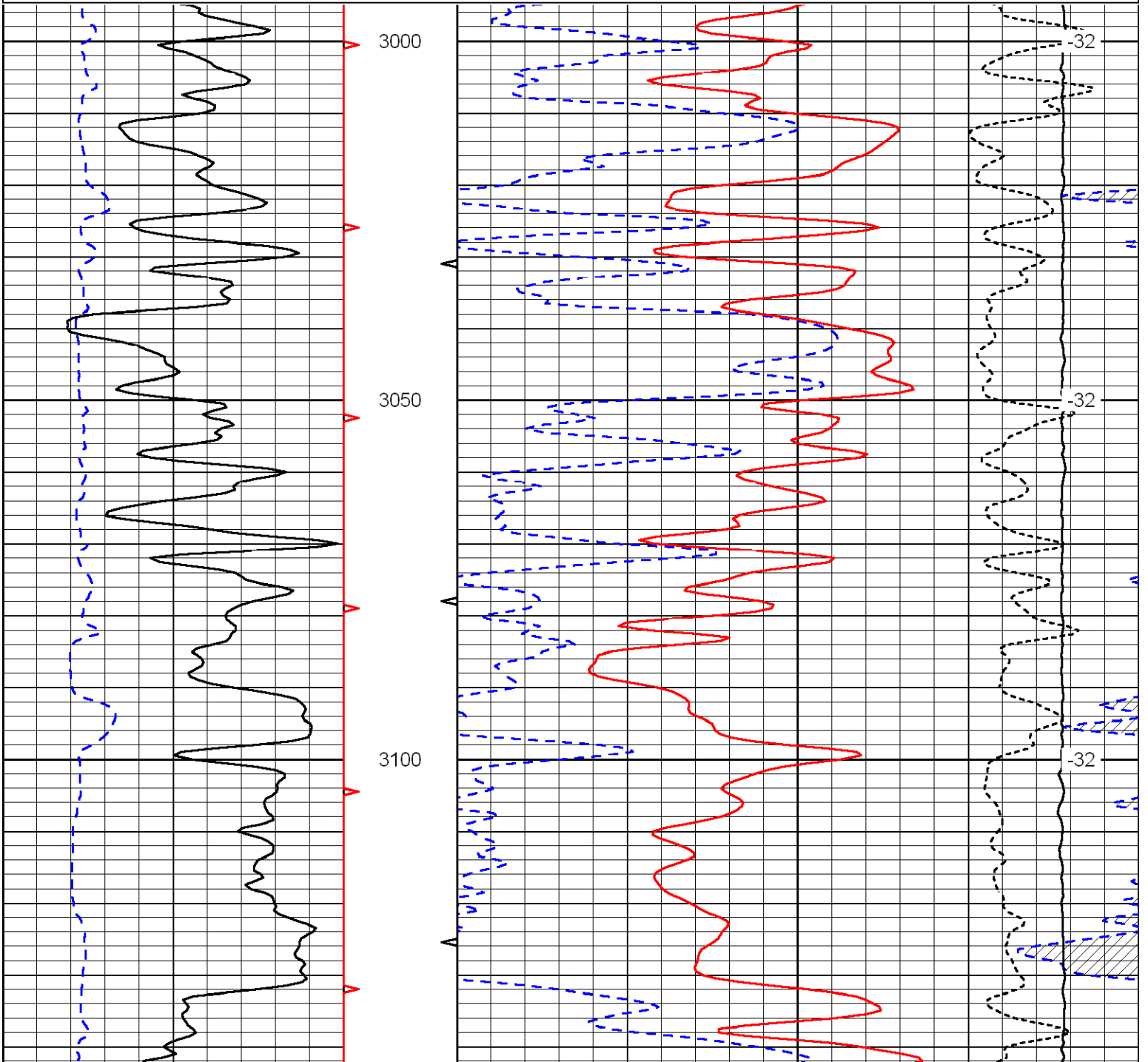
6 Caliper (GAPI) 16

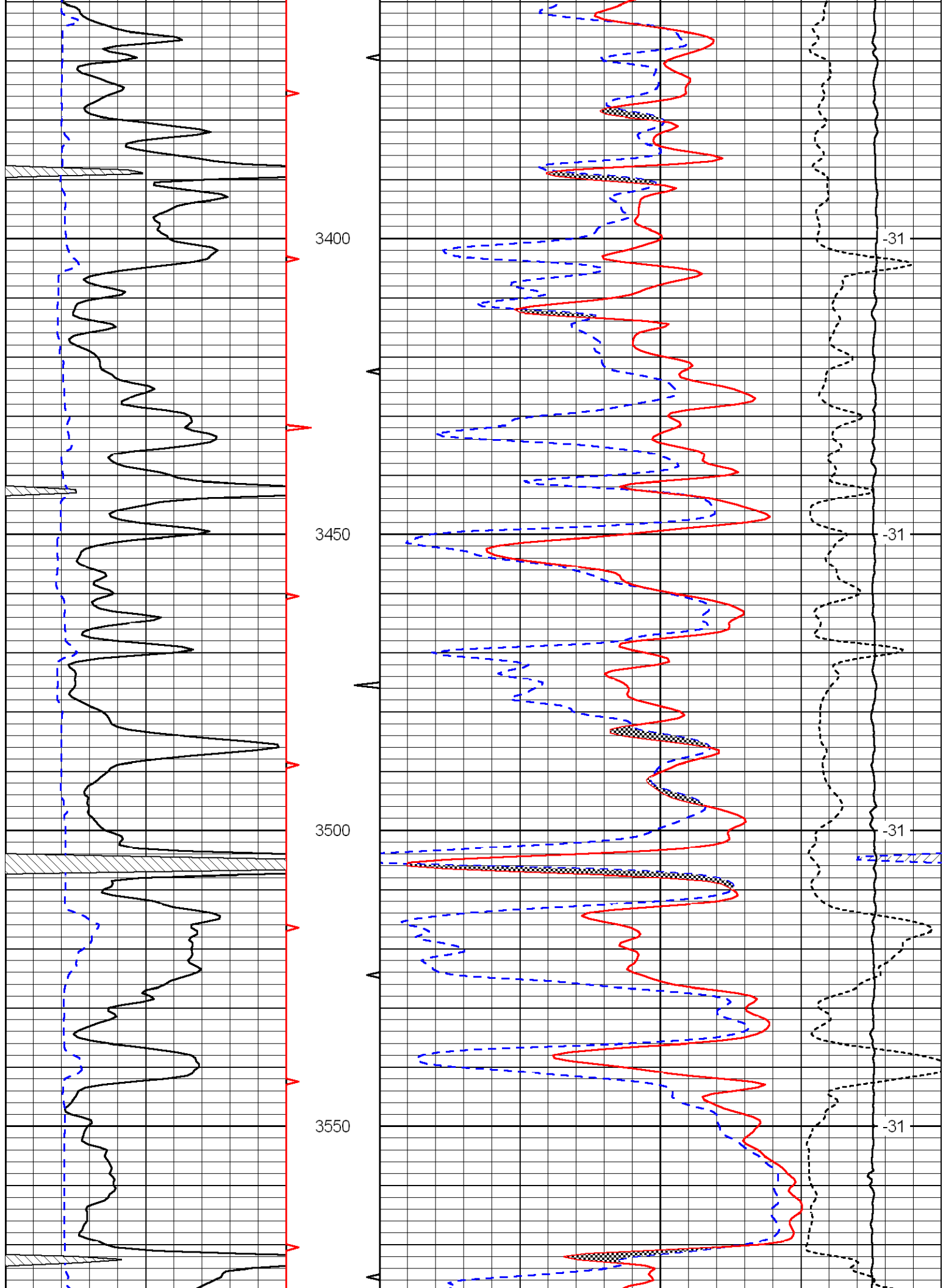
2	Bulk Density	3
15000	Line Tension	0
-0.25	Correction	0.25
LSPD		

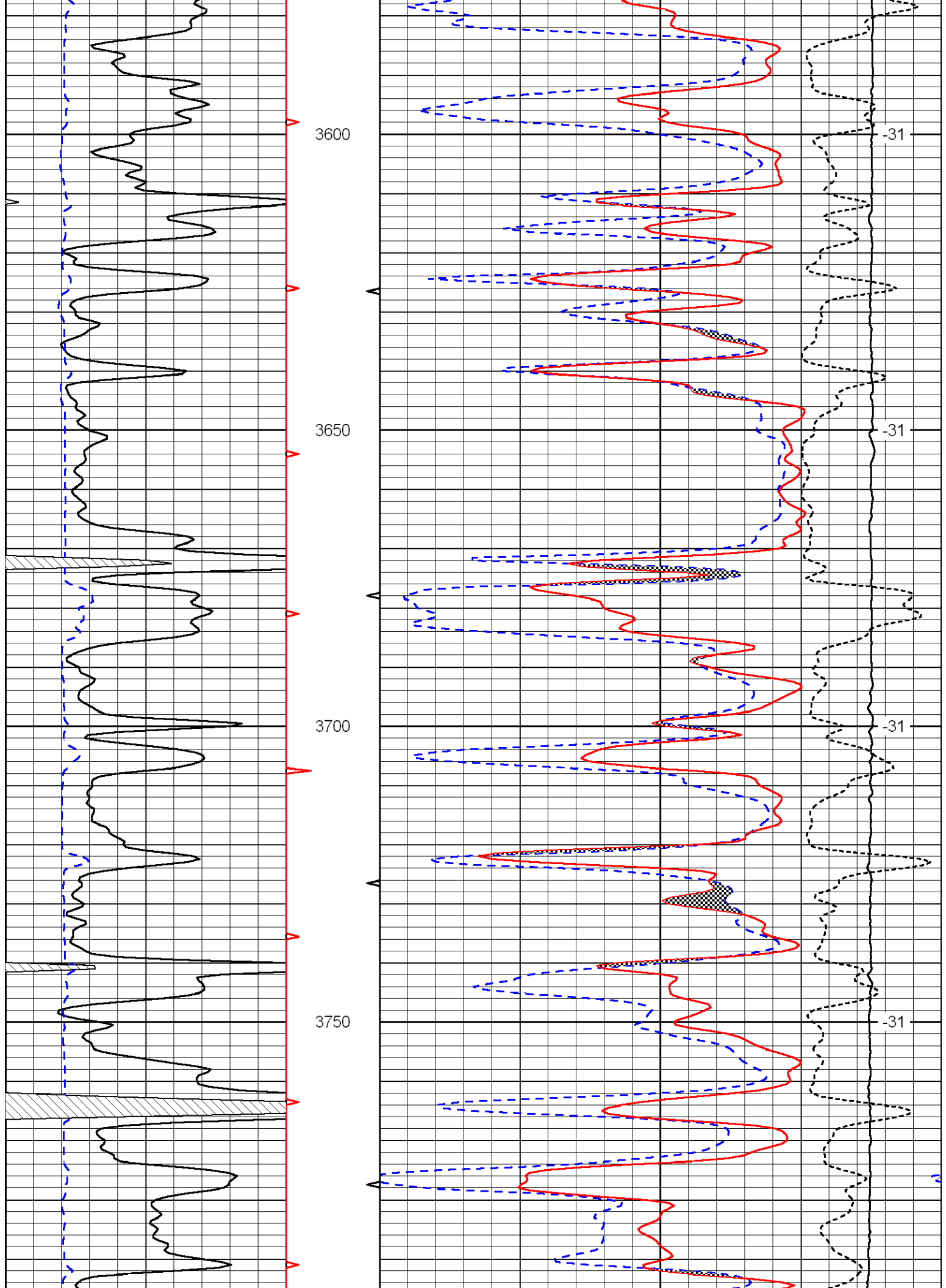
Database File: c:\warrior\data\murfin_sears mcwaller no. 1-19\murfinhd.db
 Dataset Pathname: DIL/murfstk
 Presentation Format: cndlspec
 Dataset Creation: Fri Dec 05 15:11:18 2008
 Charted by: Depth in Feet scaled 1:240

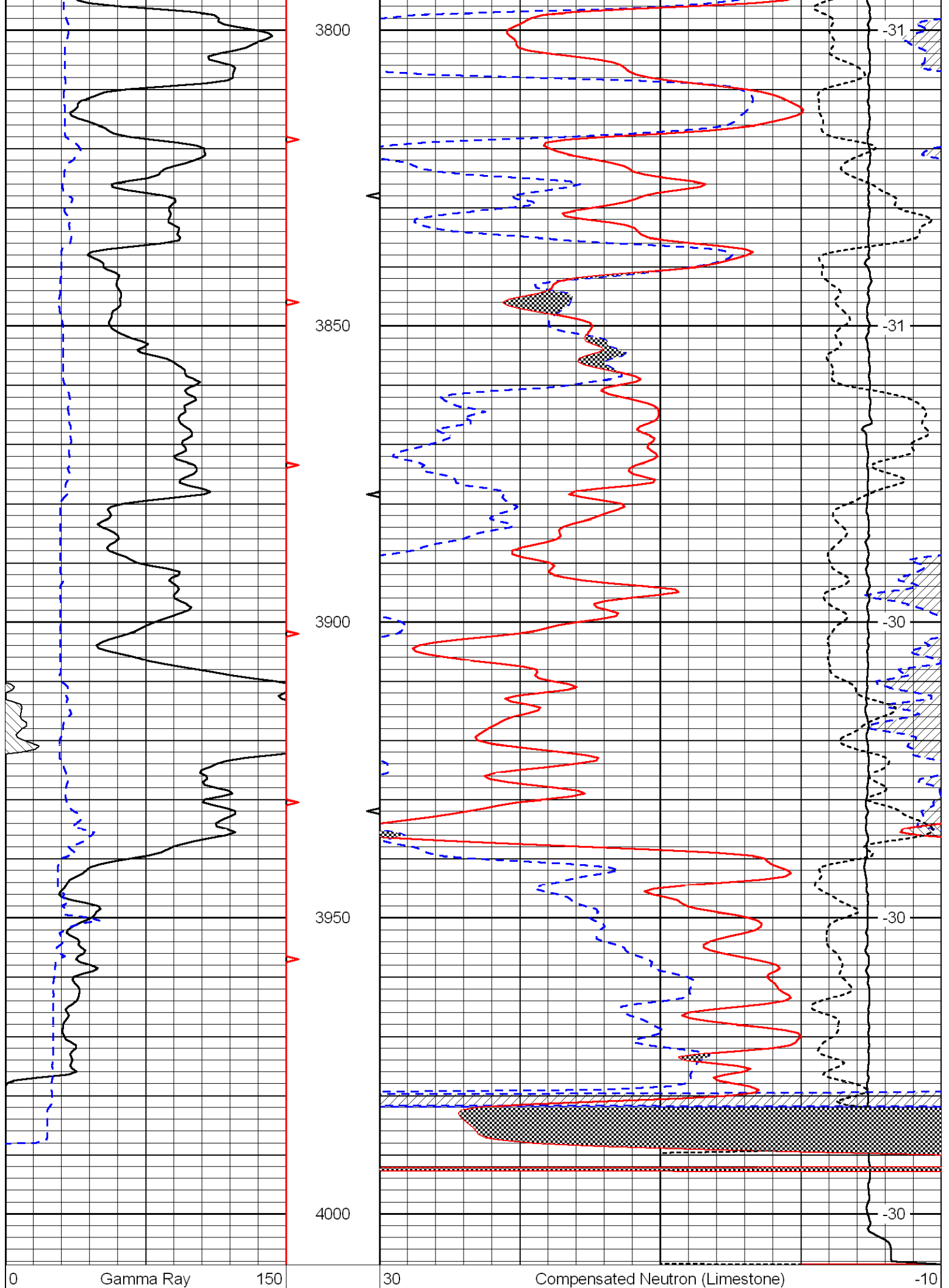
0 Gamma Ray 150
 6 Caliper (GAPI) 16

30	Compensated Neutron (Limestone)	-10
30	Compensated Density (2.71 ma)	-10
15000	Line Tension	0
-0.25	Correction	0.25
LSPD		









6	Caliper (GAPI)	16
---	----------------	----

30	Compensated Density (2.71 ma)	-10
----	-------------------------------	-----

15000	Line Tension	0
-------	--------------	---

-0.25	Correction	0.25
-------	------------	------

LSPD