



Dual Induction Log

DIGITAL LOG (785) 625-3858

API No.	15-007-23,467-00-00	
Company	Val Energy, Inc.	
Well	Paxton Kubik No. 10-28	
Field	Landis	
County	Barber	State
		Kansas
Location	NE - SE - NE 3630 FSL & 330' FEL	
Sec: 28	Twp: 34 S	Rge: 11 W
Permanent Datum	Ground Level	Elevation 1372
Log Measured From	Kelly Bushing	11 Ft. Above Perm. Datum
Drilling Measured From	Kelly Bushing	
		Other Services CNL/CDL MEL
		Elevation K.B. 1383 D.F. 1372 G.L. 1372

Date	11/24/2009
Run Number	One
Depth Driller	4825
Depth Logger	4800
Bottom Logged Interval	4799
Top Log Interval	200
Casing Driller	8.625 @ 206
Casing Logger	206
Bit Size	7.875
Type Fluid in Hole	Chemical
Salinity, ppm CL	3,000
Density / Viscosity	9.3 56
pH / Fluid Loss	10.0 9.2
Source of Sample	Flowline
Rm @ Meas. Temp	1.80 @ 60
Rmf @ Meas. Temp	1.35 @ 60
Rmc @ Meas. Temp	2.43 @ 60
Source of Rmf / Rmc	Charts
Rm @ BHT	0.87 @ 124
Operating Rig Time	4 Hours
Max Rec. Temp. F	124
Equipment Number	15
Location	Hays
Recorded By	B. Becker
Witnessed By	Steve Vanbuskirk

<<< Fold Here >>>

All interpretations are opinions based on inferences from electrical or other measurements and we cannot and do not guarantee the accuracy or correctness of any interpretation, and we shall not, except in the case of gross or willful negligence on our part, be liable or responsible for any loss, costs, damages, or expenses incurred or sustained by anyone resulting from any interpretation made by any of our officers, agents or employees. These interpretations are also subject to our general terms and conditions set out in our current Price Schedule.

Comments

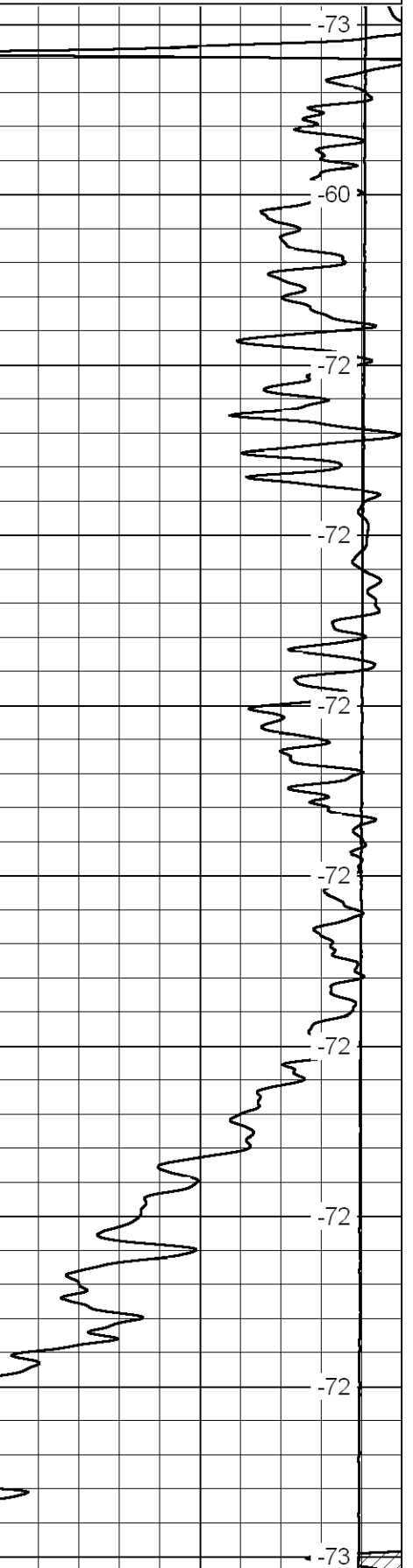
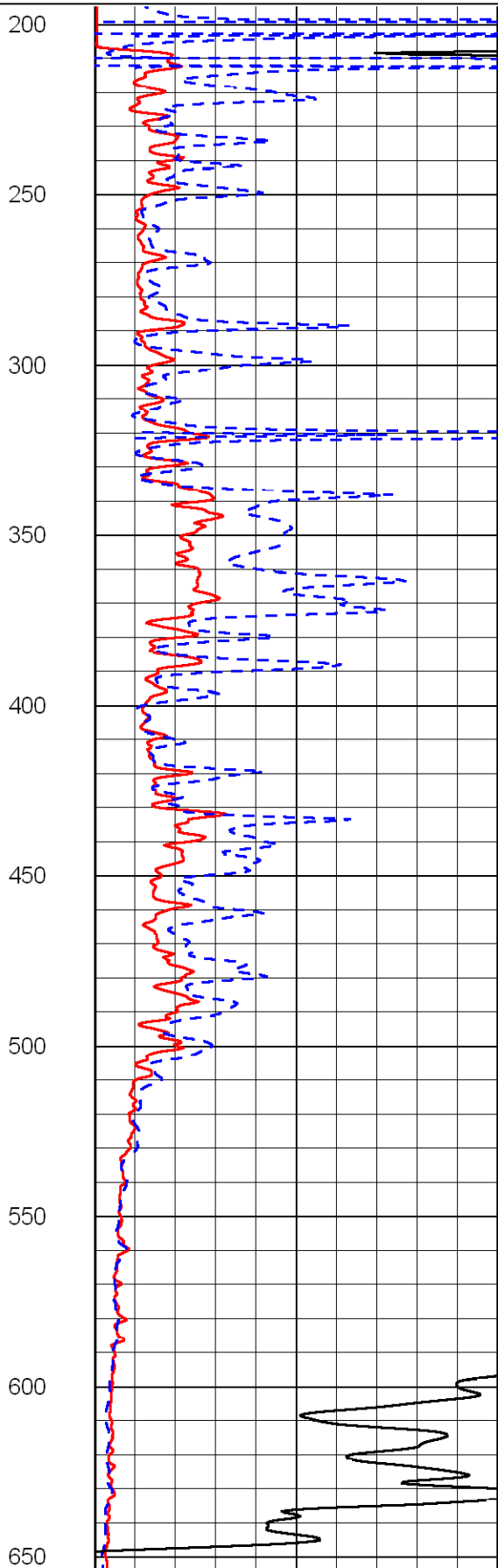
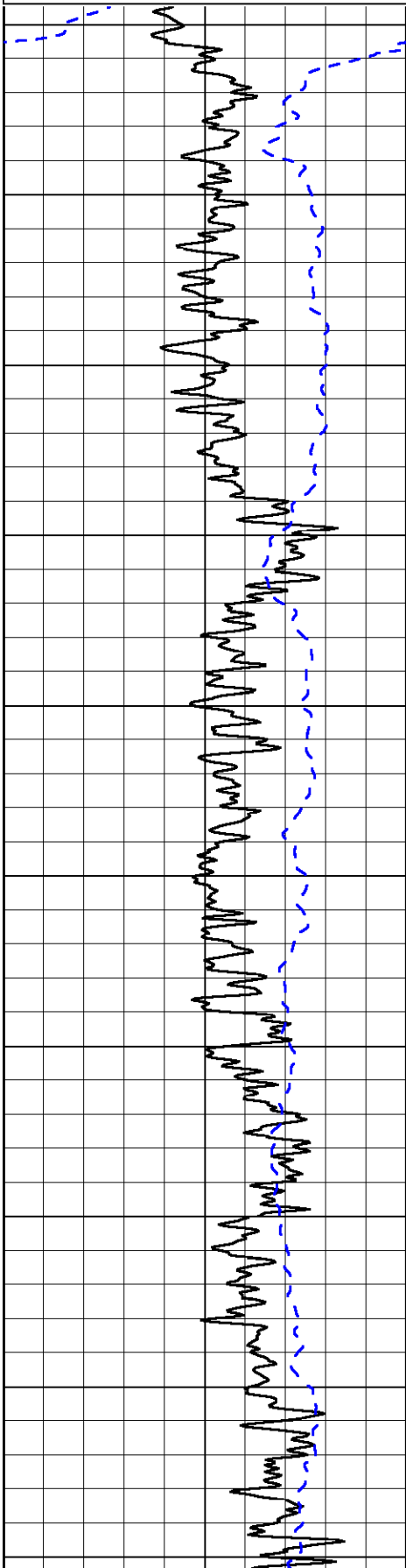
Thank you for using Log-Tech, Inc.
 (785) 625-3858
 Medicine Lodge, Ks;
 South to Rattlesnake Trail Rd;
 3 East to Red Dust Rd;
 1/2 North; West Into

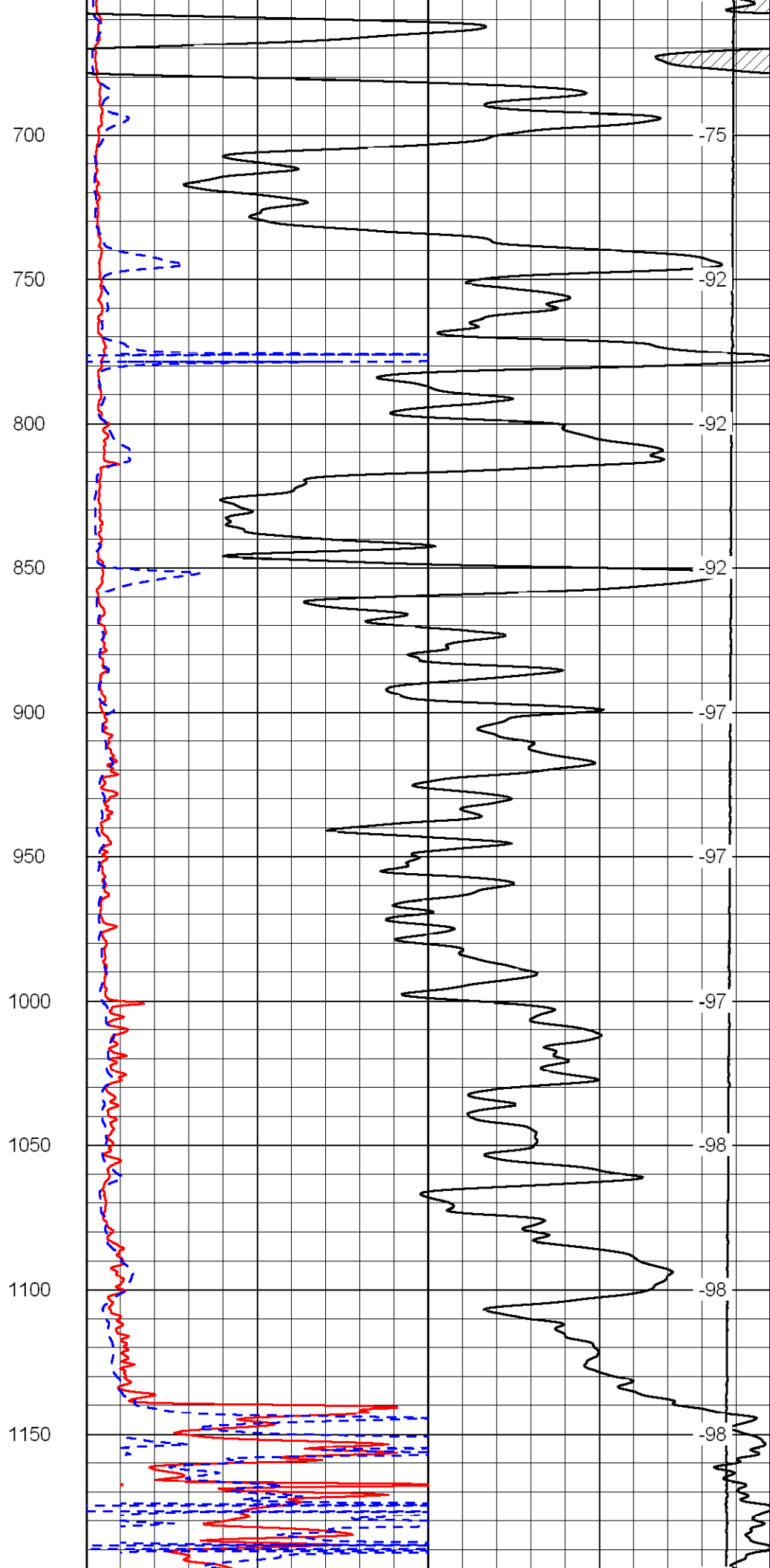
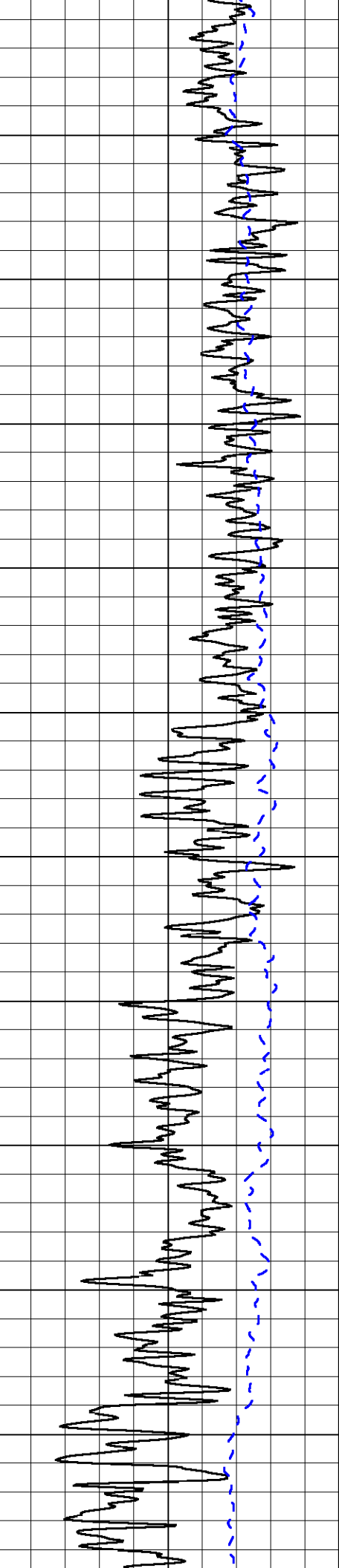
Database File: c:\warrior\data\val_paxton kubik no. 10-28\valhd.db
 Dataset Pathname: DIL\val
 Presentation Format: dil2in
 Dataset Creation: Tue Nov 24 23:34:46 2009
 Charted by: Depth in Feet scaled 1:600

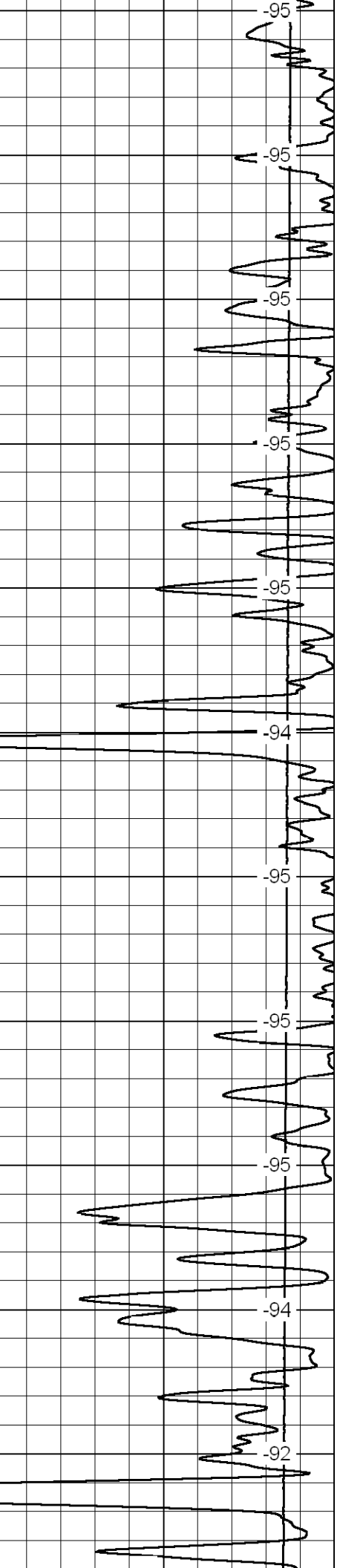
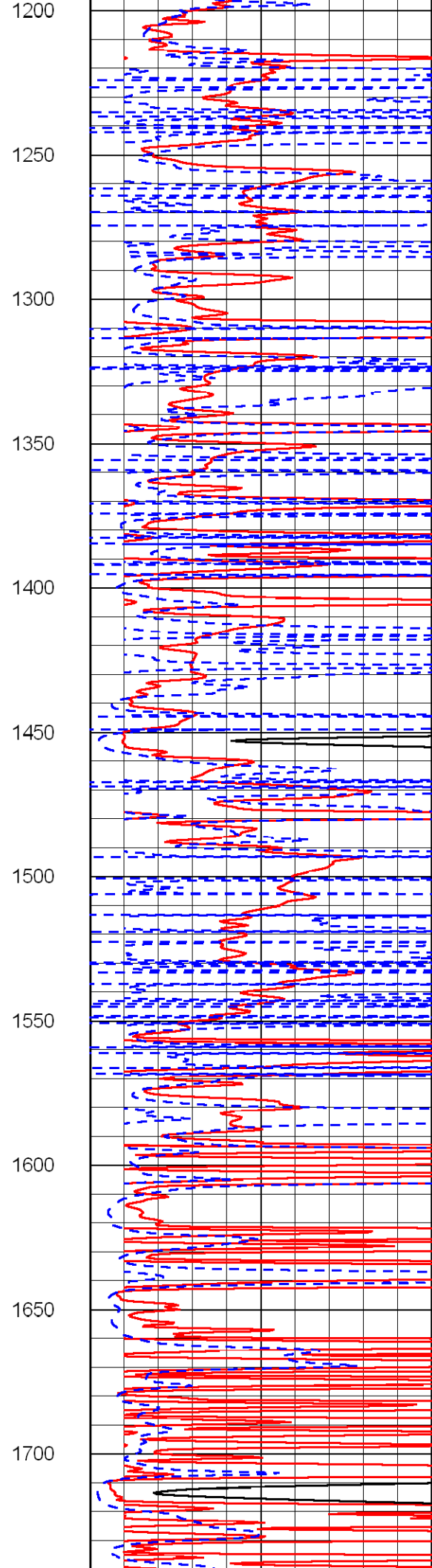
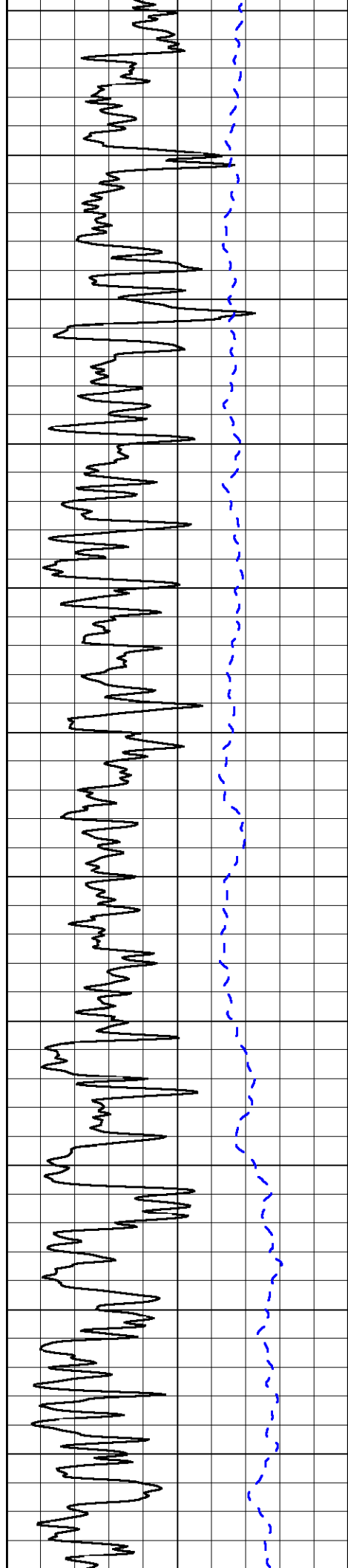
0 Gamma Ray 150
-200 SP (MV) 0

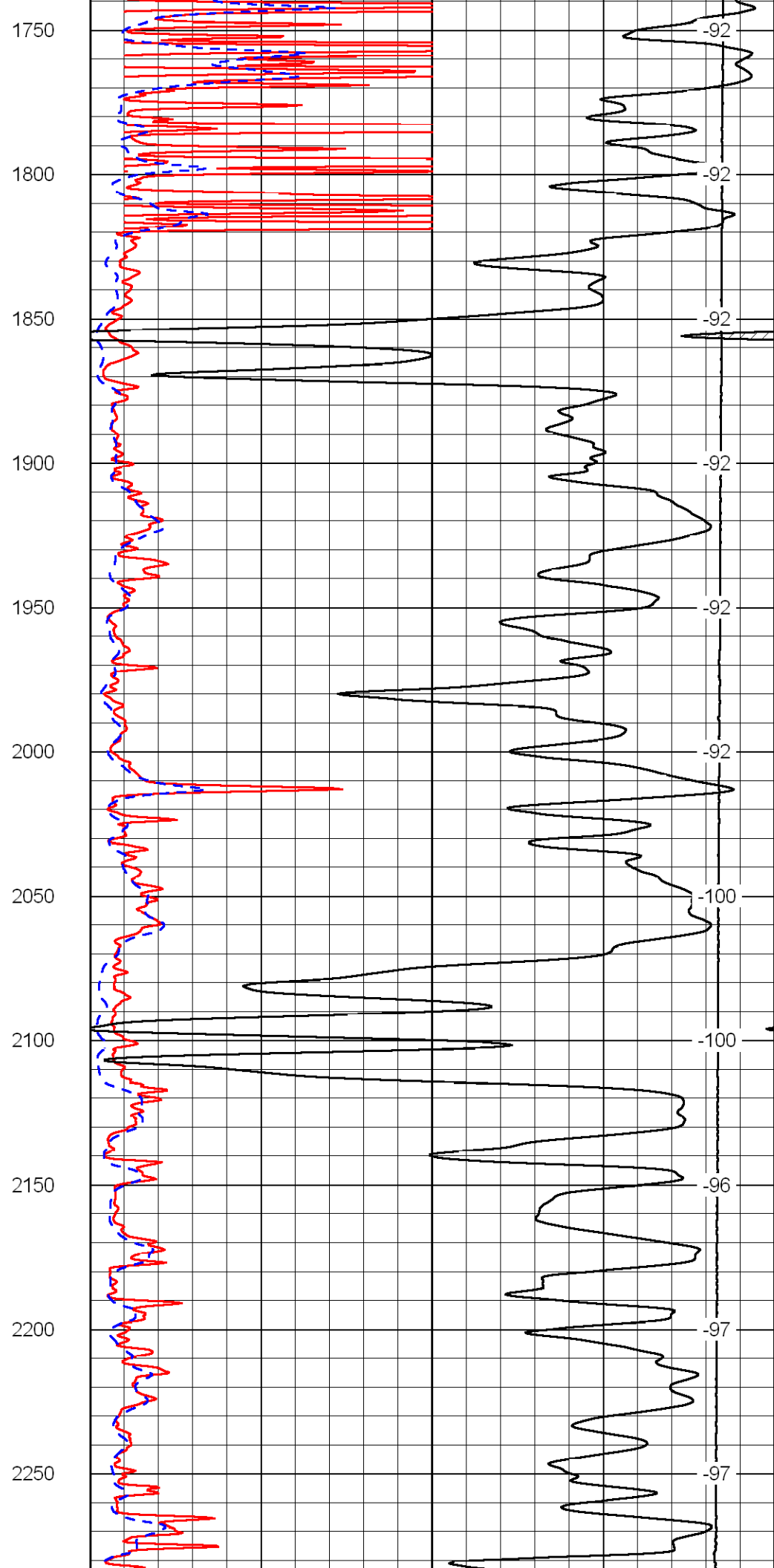
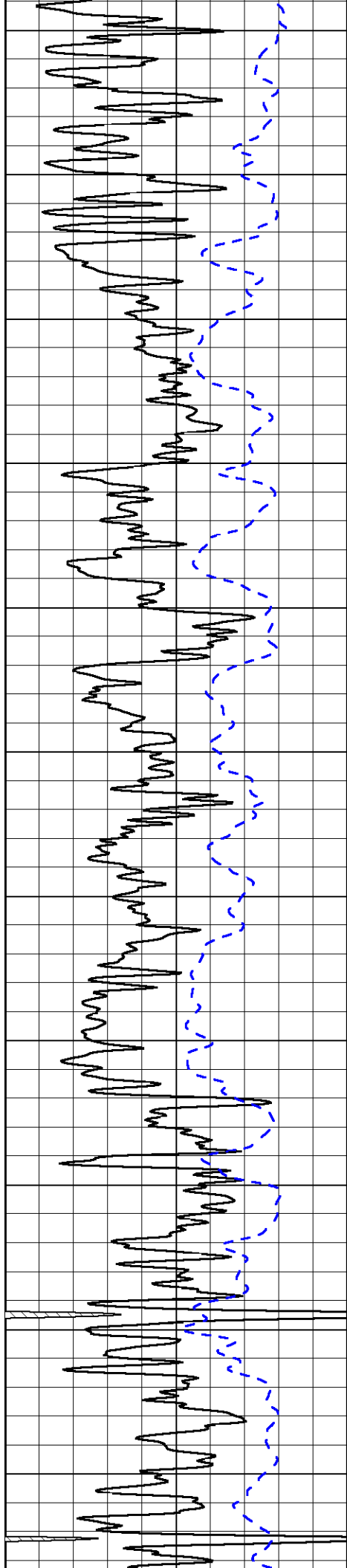
0 Shallow Resistivity (Ohm-m) 50
0 Deep Resistivity (Ohm-m) 50
1000 Conductivity (mmho/m) 0
15000 Line Tension (lb) 0
50 Shallow Resistivity (Ohm-m) 500
50 Deep Resistivity (Ohm-m) 500

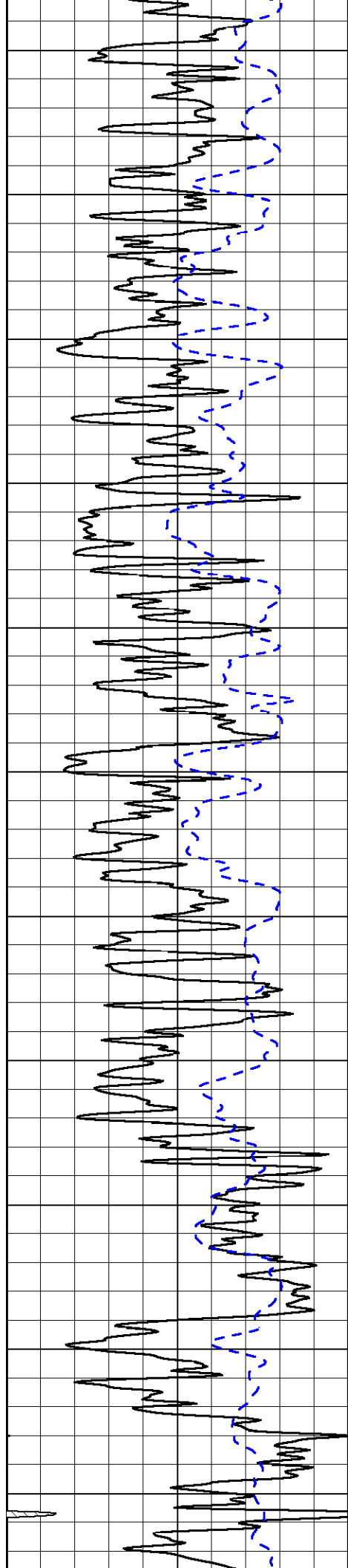
LSPD
(ft/min)



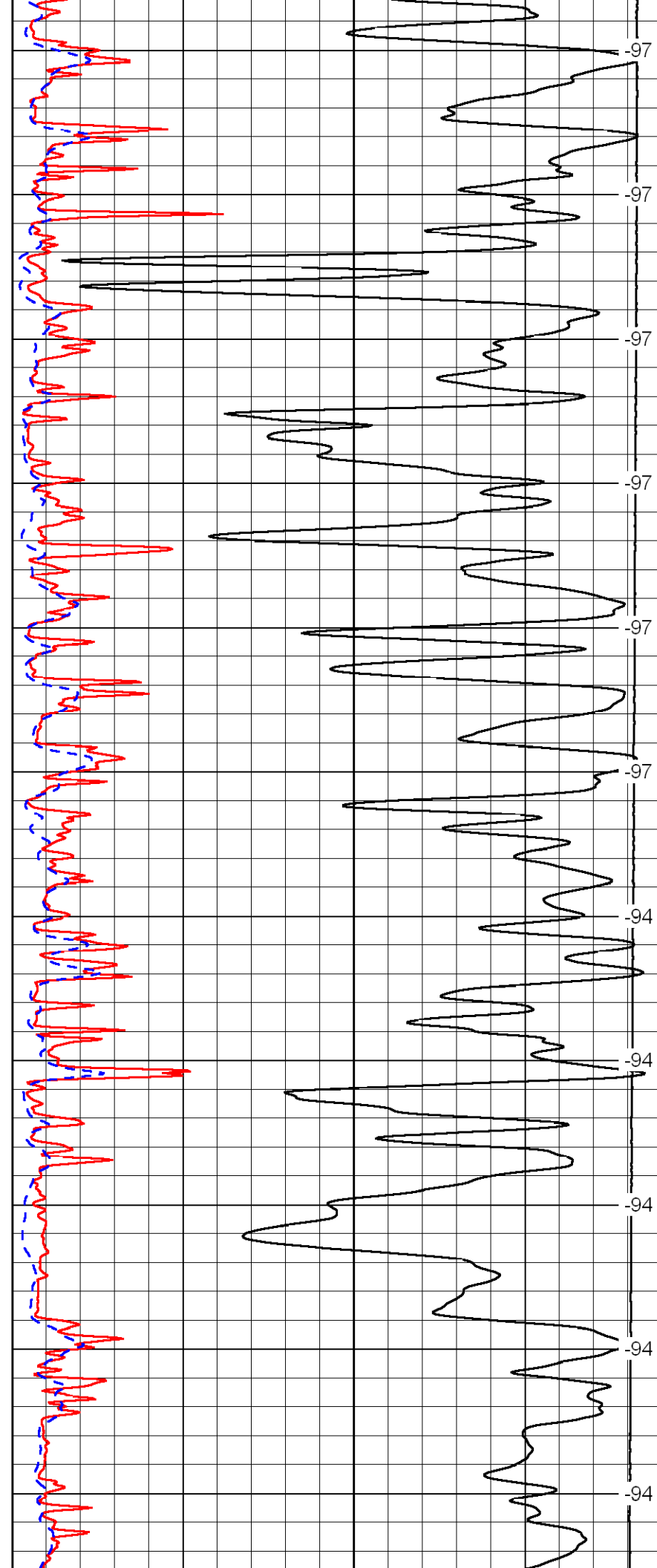




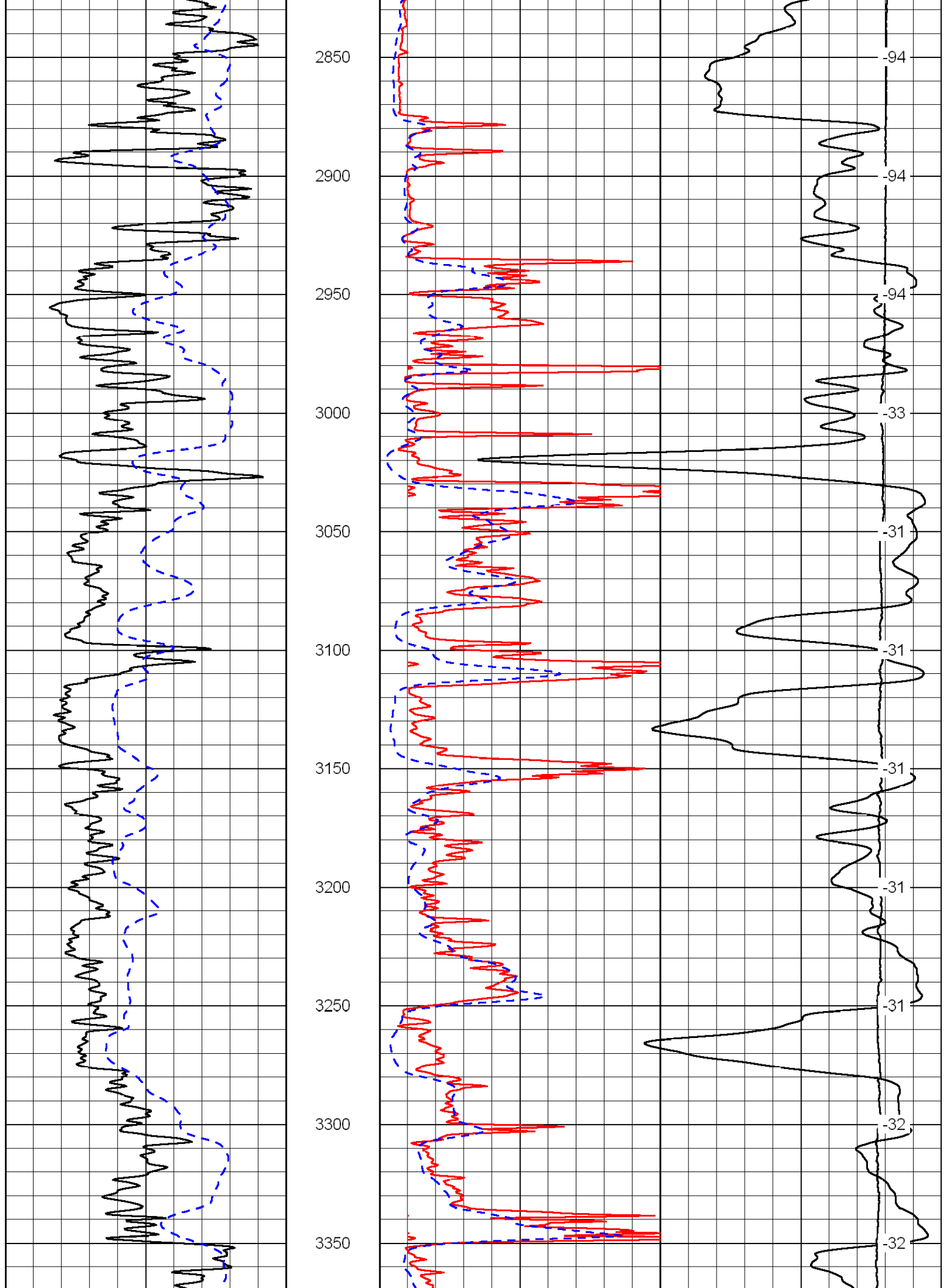


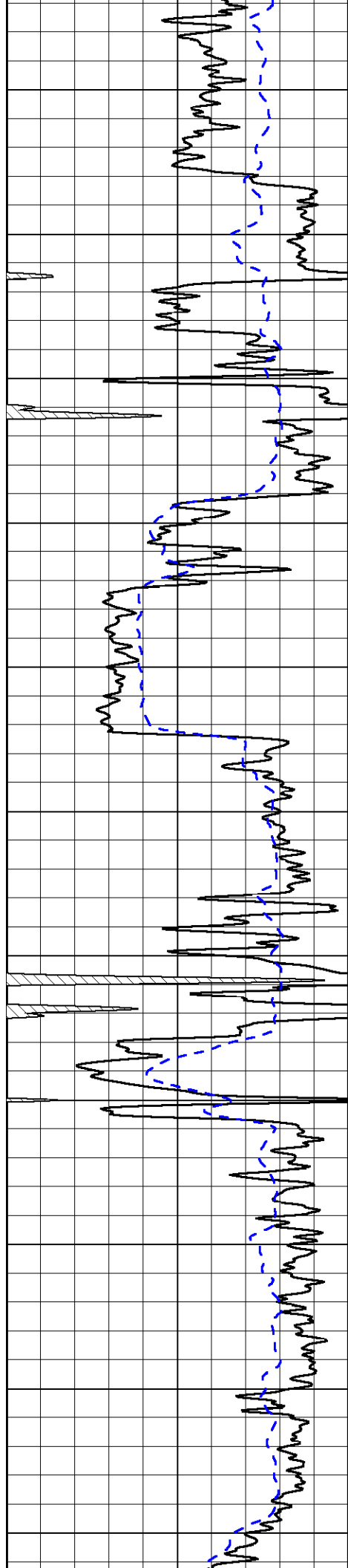


2300
2350
2400
2450
2500
2550
2600
2650
2700
2750
2800



-97
-97
-97
-97
-97
-97
-94
-94
-94
-94
-94





3400

3450

3500

3550

3600

3650

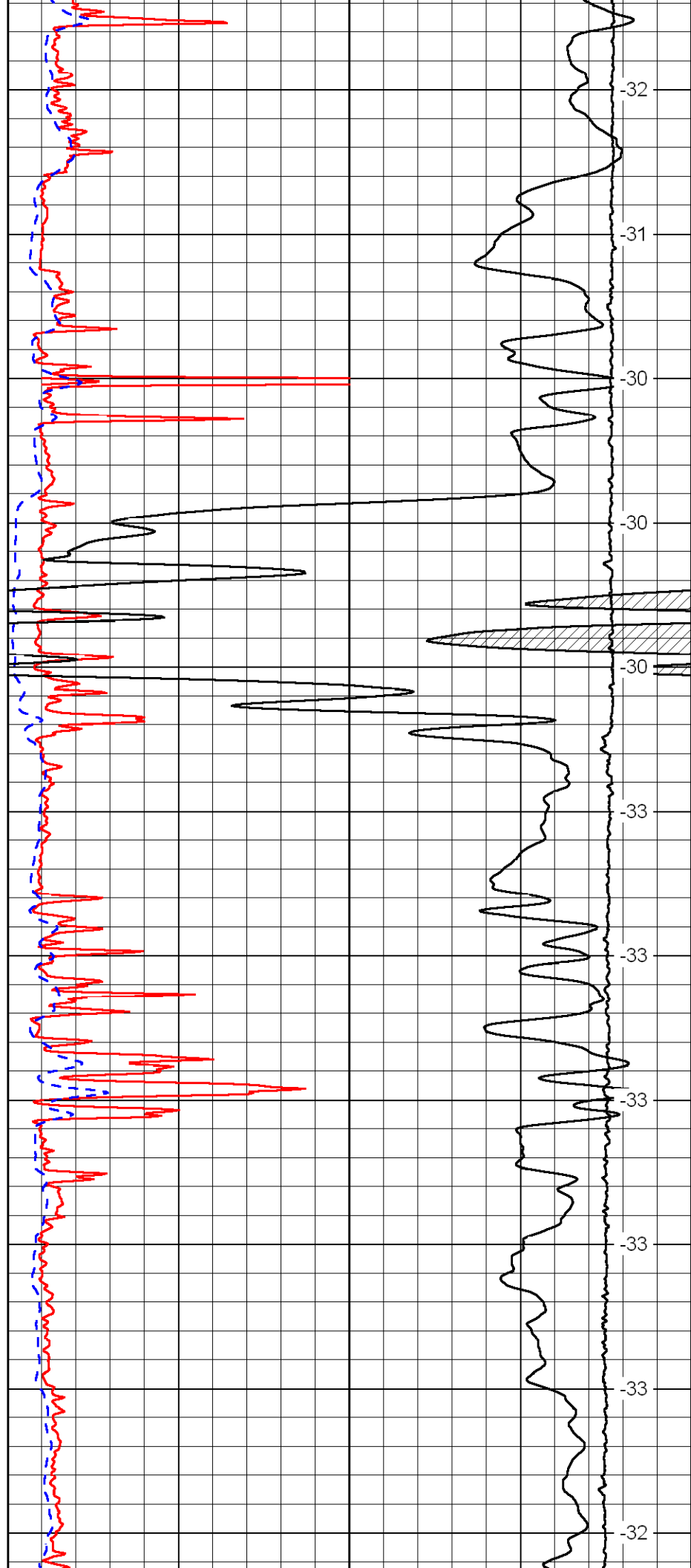
3700

3750

3800

3850

3900



32

31

30

30

30

33

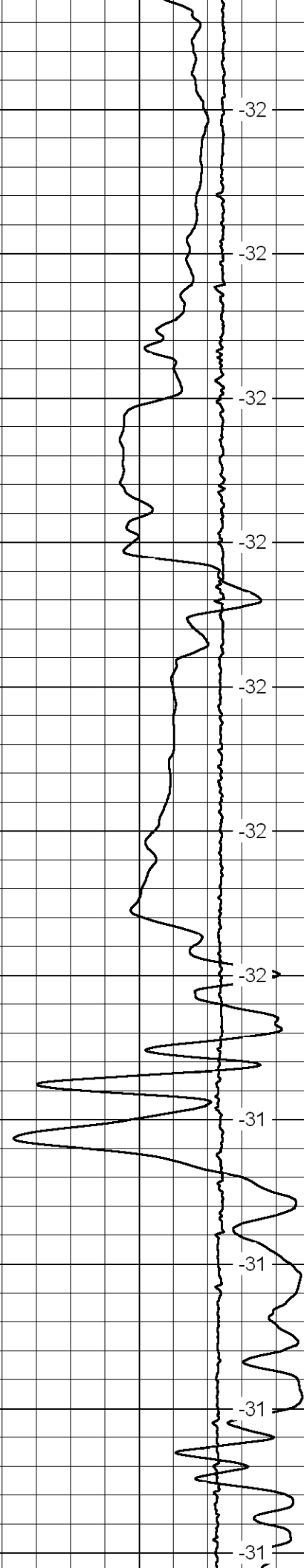
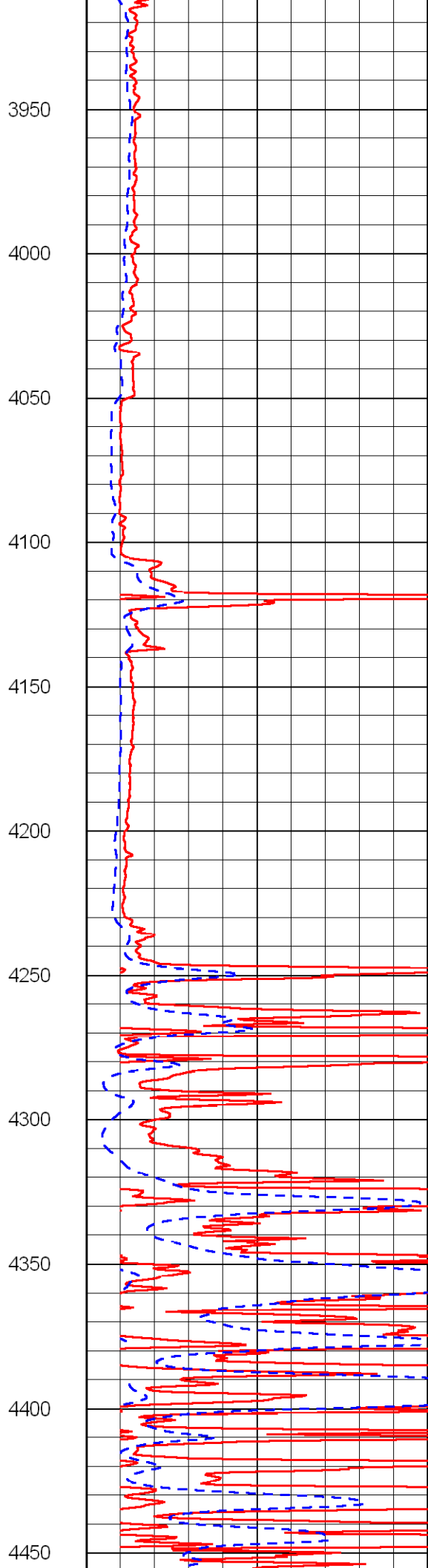
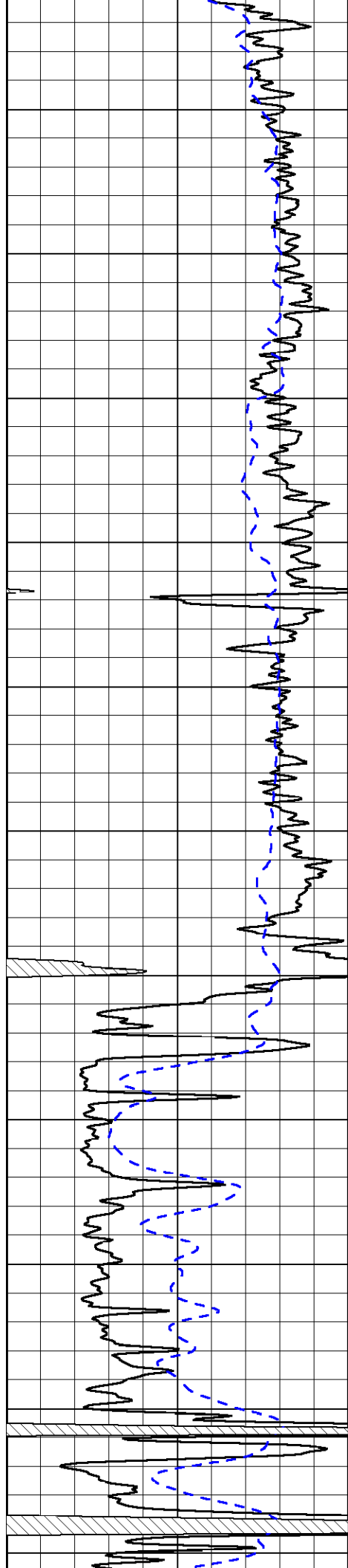
33

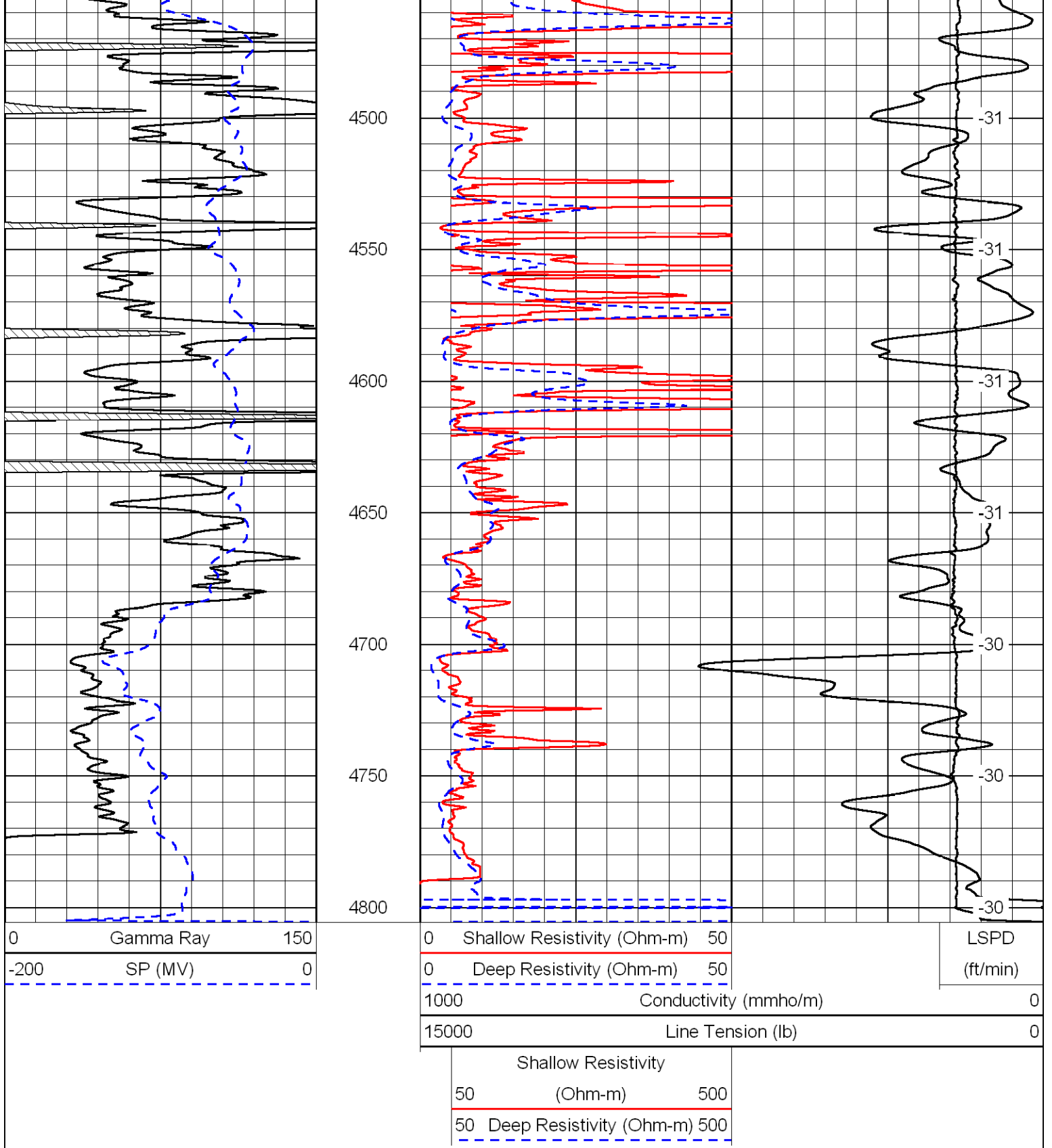
33

33

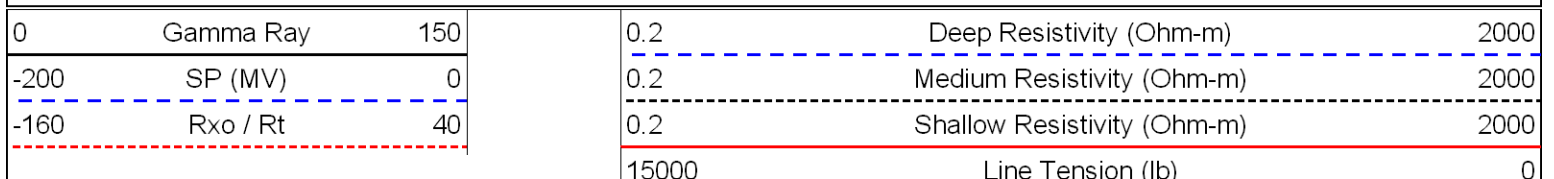
33

32

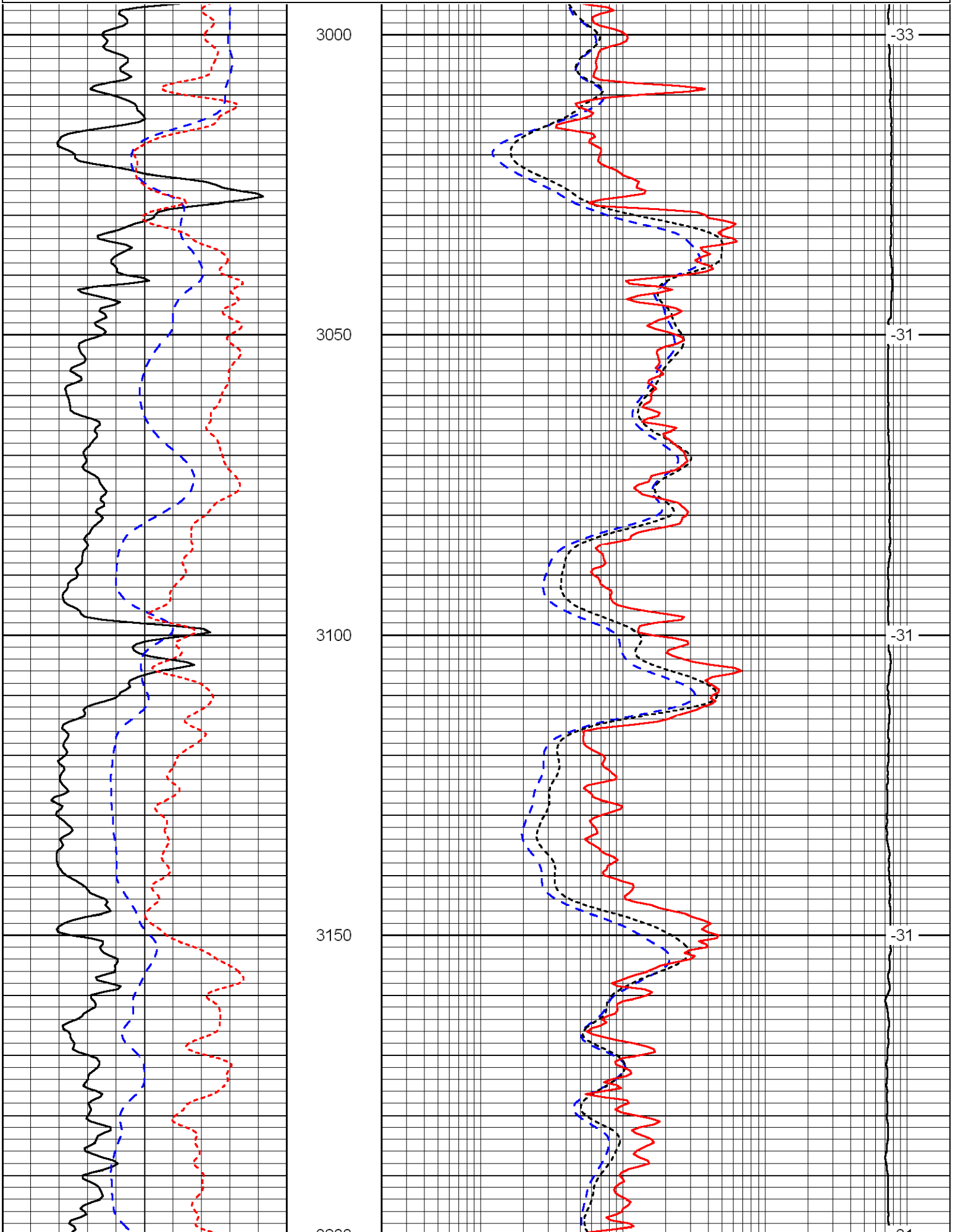


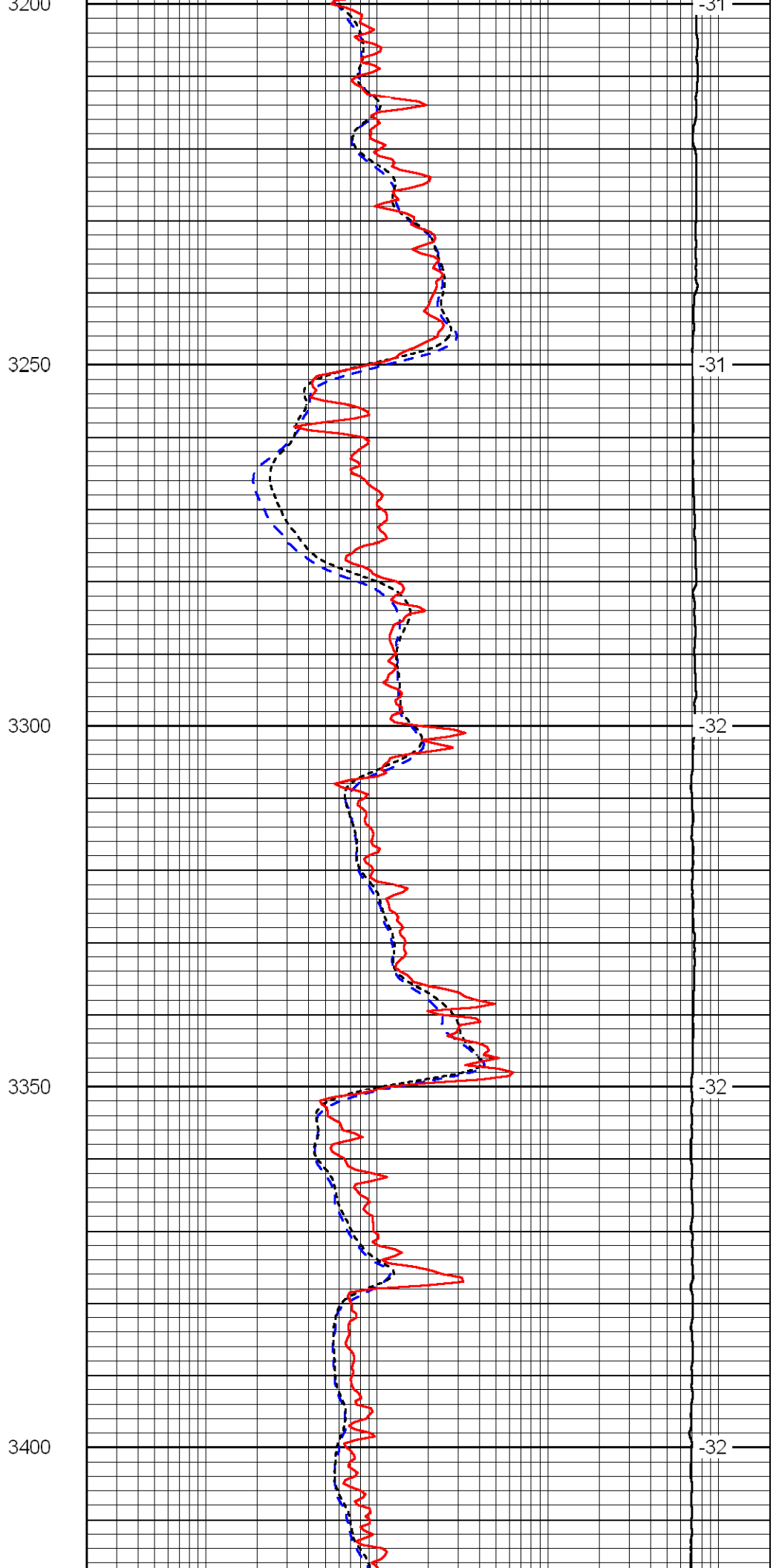
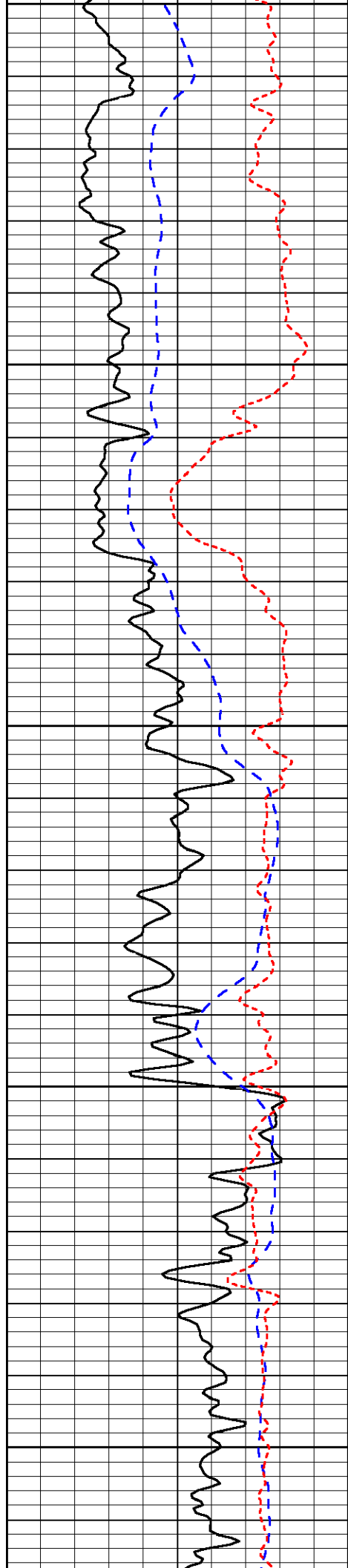


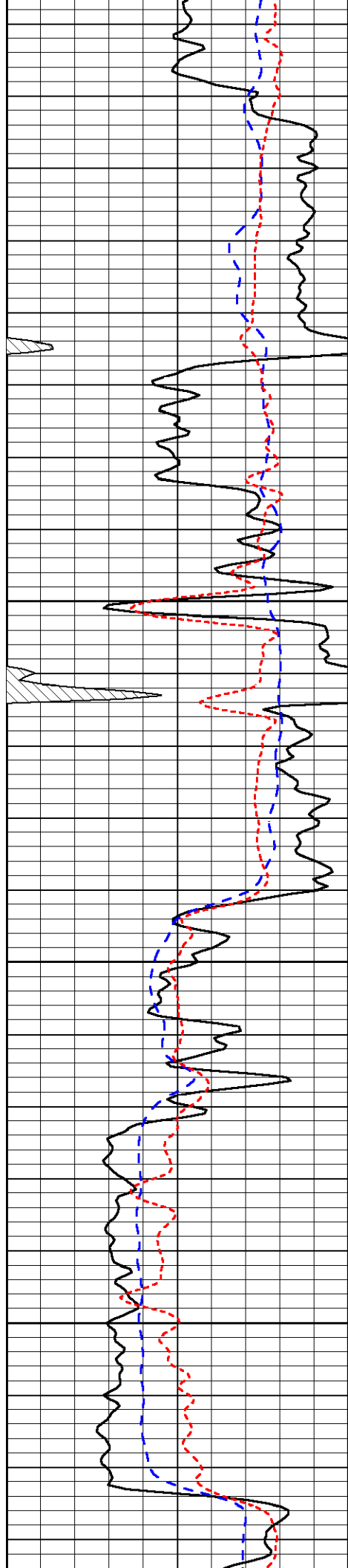
Database File: c:\warrior\data\val_paxton kubik no. 10-28\valhd.db
 Dataset Pathname: DIL\val
 Presentation Format: dil
 Dataset Creation: Tue Nov 24 23:34:46 2009
 Charted by: Depth in Feet scaled 1:240



LSPD
(ft/min)





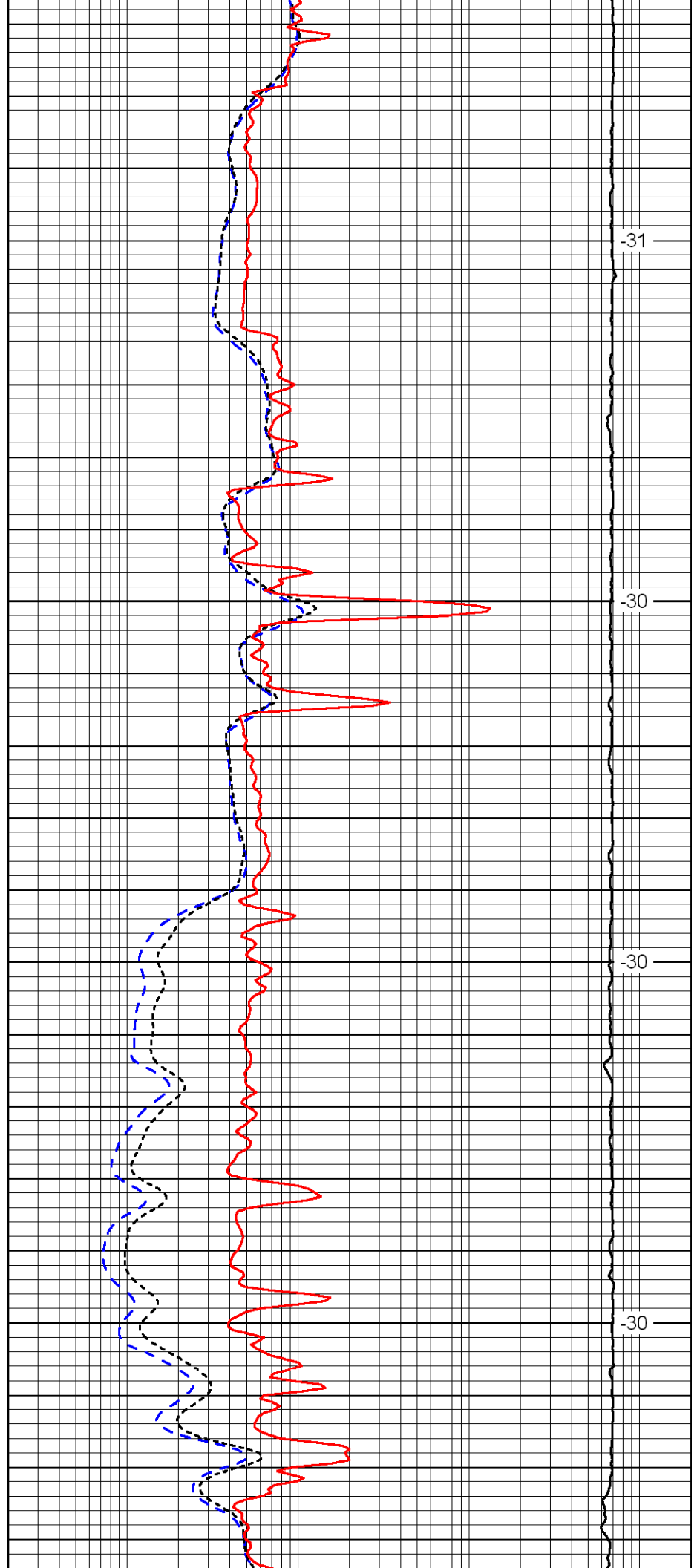


3450

3500

3550

3600

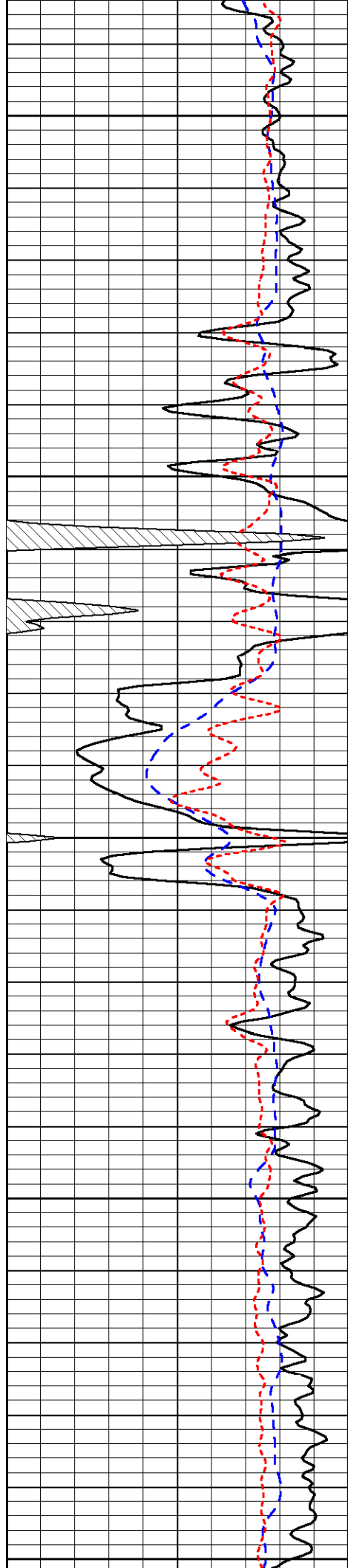


-31

-30

-30

-30



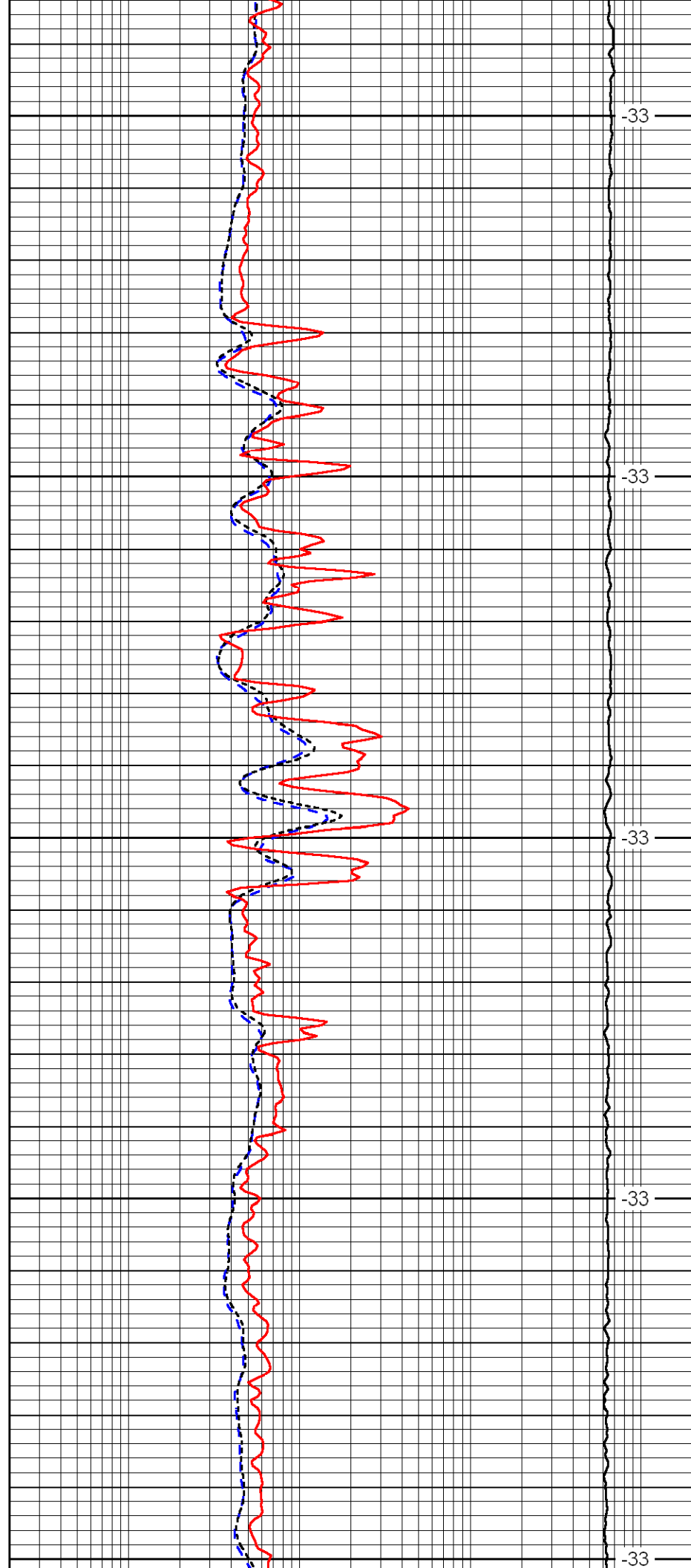
3650

3700

3750

3800

3850



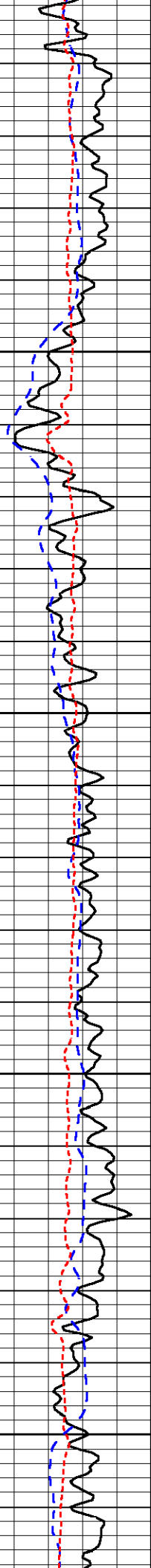
-33

-33

-33

-33

-33

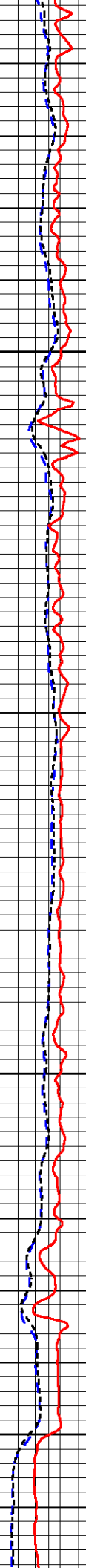


3900

3950

4000

4050

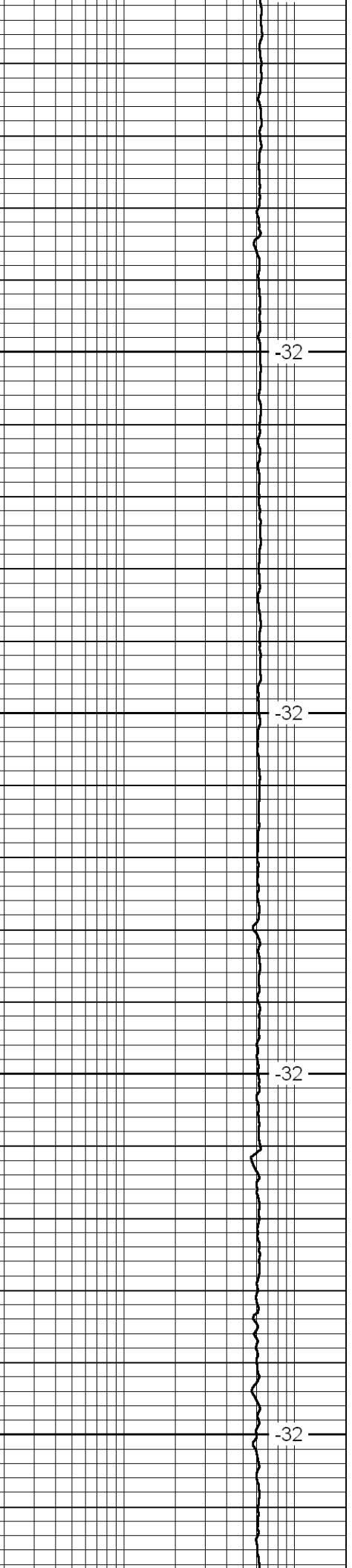


-32

-32

-32

-32

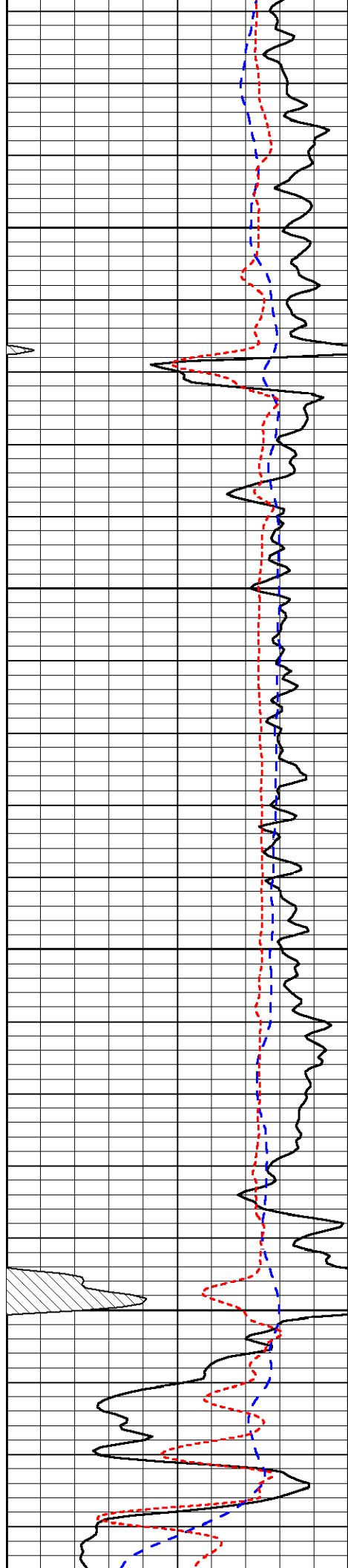


-32

-32

-32

-32

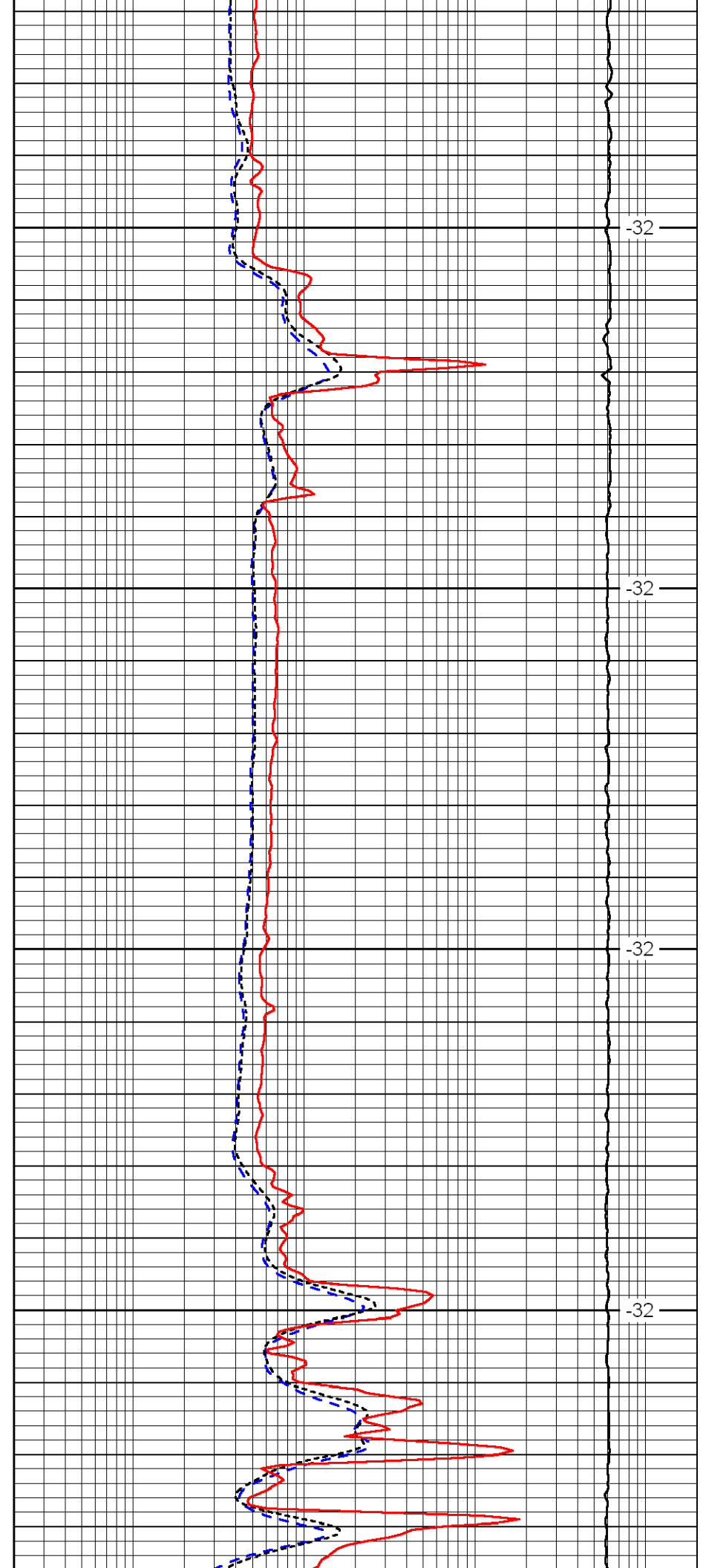


4100

4150

4200

4250

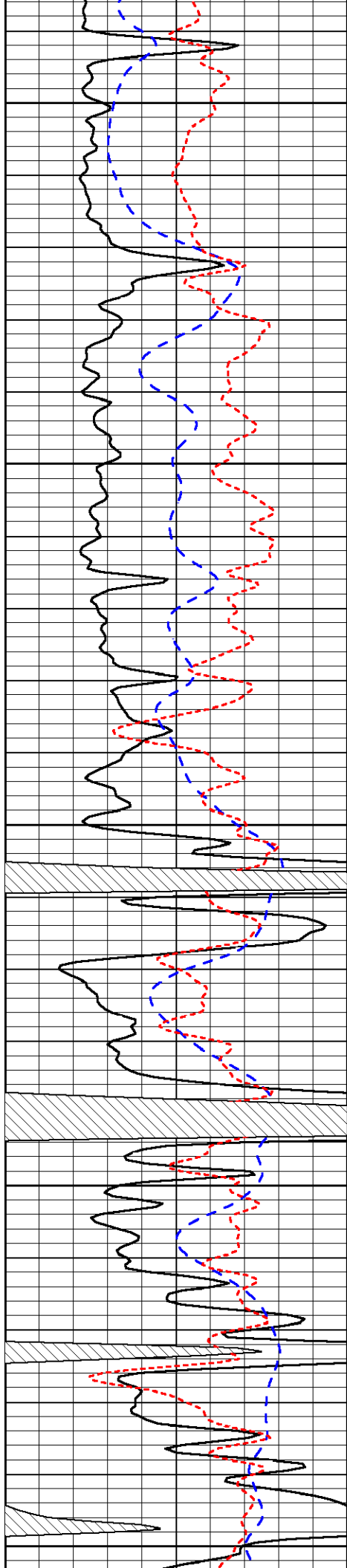


-32

-32

-32

-32



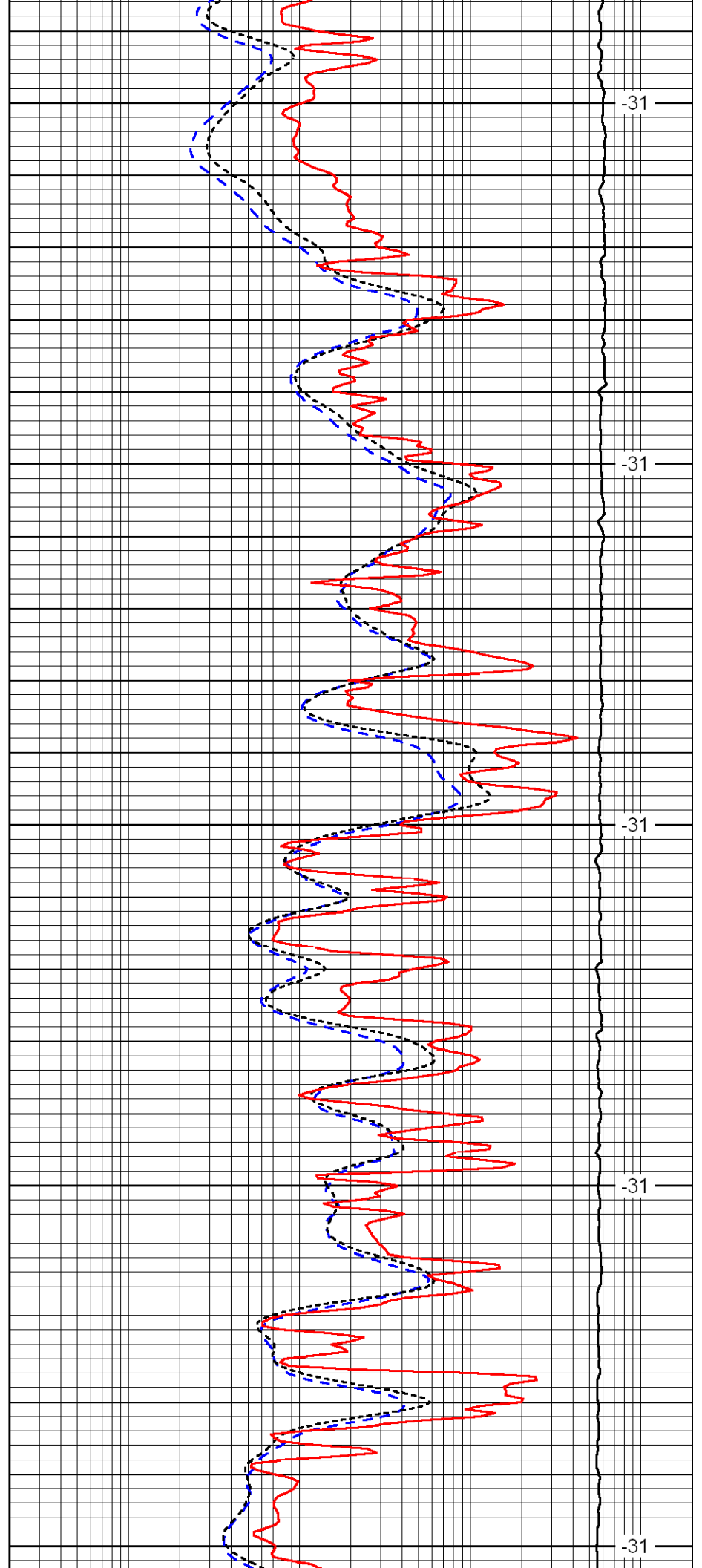
4300

4350

4400

4450

4500



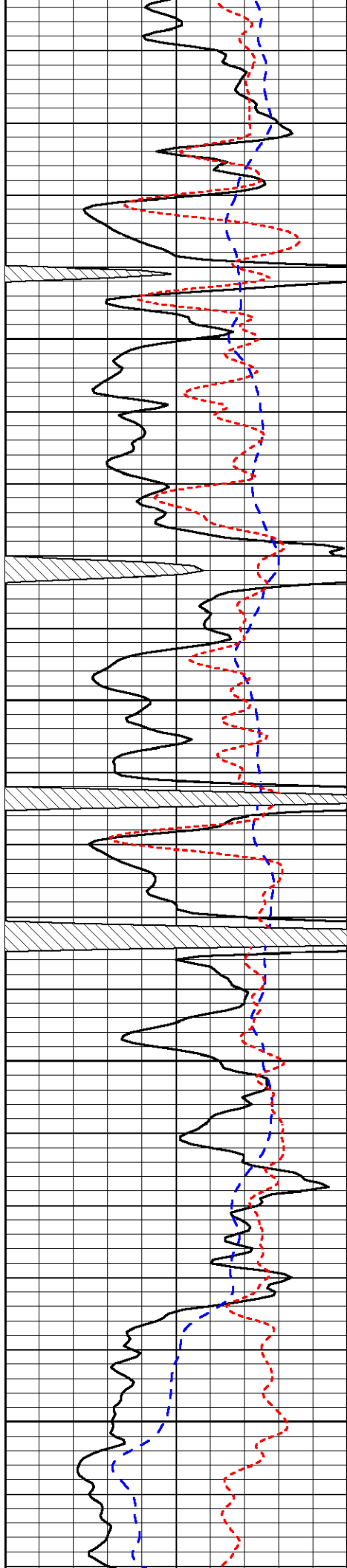
-31

-31

-31

-31

-31

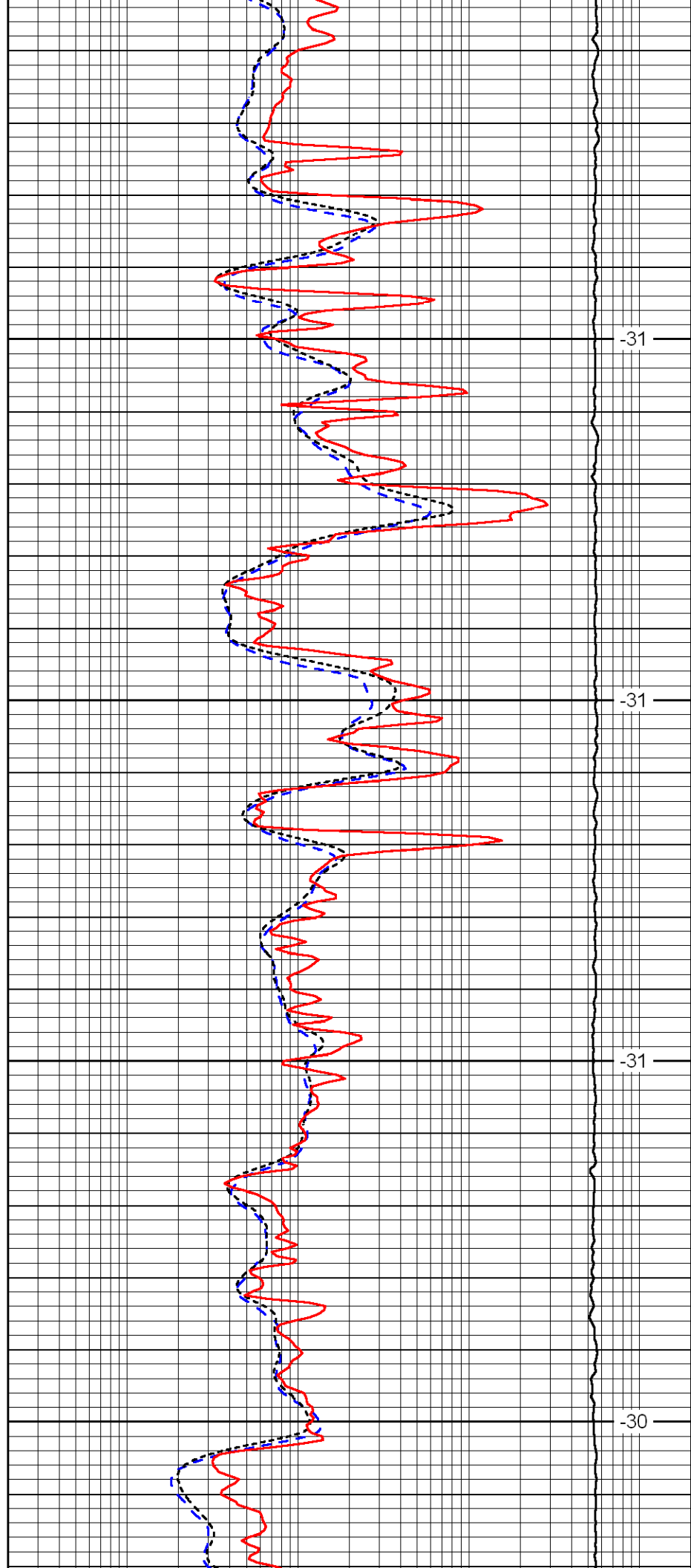


4550

4600

4650

4700

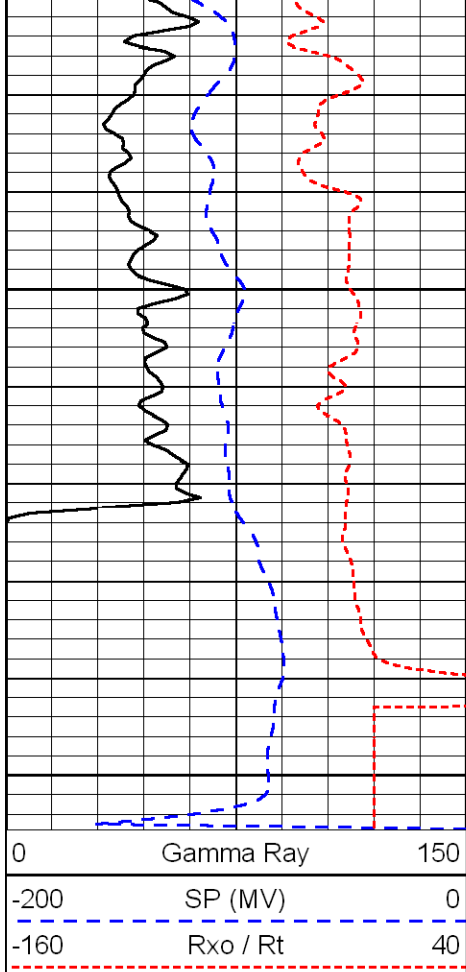


-31

-31

-31

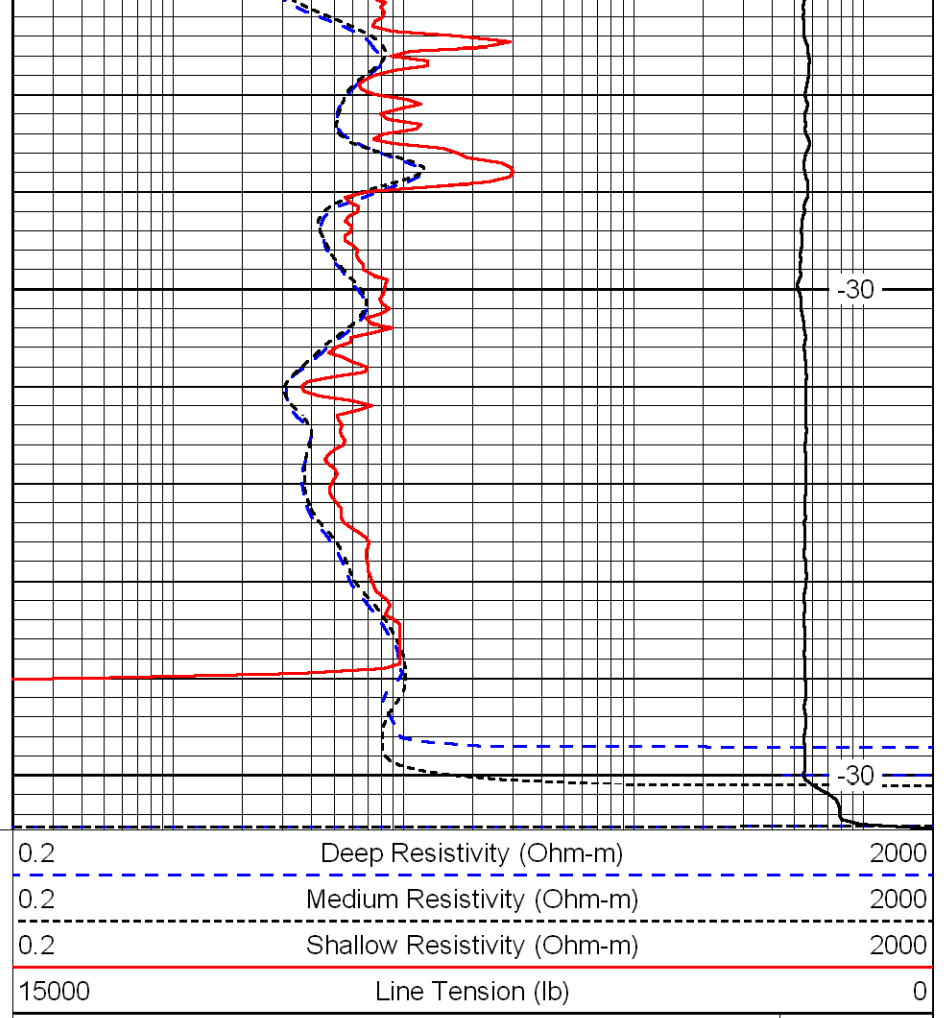
-30



4750

4800

0	Gamma Ray	150
-200	SP (MV)	0
-160	Rxo / Rt	40



-30

-30

0.2	Deep Resistivity (Ohm-m)	2000
0.2	Medium Resistivity (Ohm-m)	2000
0.2	Shallow Resistivity (Ohm-m)	2000
15000	Line Tension (lb)	0

LSPD
(ft/min)