



SUPERIOR
Hays,
Kansas

**DUAL INDUCTION
LOG**

Company VINCENT OIL CORPORATION
Well FORD COUNTY LAND & CATTLE
Field WILDCAT
County FORD
State KANSAS

Company VINCENT OIL CORPORATION
Well FORD COUNTY LAND & CATTLE CO. #2-5
Field WILDCAT
County FORD State KANSAS

Location: API #: 15-057-20644-0000
1980' FSL & 960' FWL
SEC 5 TWP 29S RGE 23W
Permanent Datum GROUND LEVEL Elevation 2473
Log Measured From KELLY BUSHING 12' A.G.L.
Drilling Measured From KELLY BUSHING
Other Services
CDL/CNL/PE
MEL/SONIC
Elevation
K.B. 2485
D.F. 2483
G.L. 2473

Date	11/14/09
Run Number	ONE
Depth Driller	5350
Depth Logger	5358
Bottom Logged Interval	5356
Top Log Interval	00
Casing Driller	8 5/8" @ 561'
Casing Logger	558
Bit Size	7 7/8
Type Fluid In Hole	CHEMICAL MUD
Density / Viscosity	8.9/7.1
pH / Fluid Loss	10.0/13.6
Source of Sample	FLOWLINE
Rm @ Meas. Temp	.440 @ 70F
Rmf @ Meas. Temp	.330 @ 70F
Rmc @ Meas. Temp	.528 @ 70F
Source of Rmf / Rmc	MEASUREMENT
Rm @ BHT	.241 @ 128F
Time Circulation Stopped	3 HOURS
Time Logger on Bottom	1:30 P.M.
Maximum Recorded Temperature	128F
Equipment Number	0836
Location	HAYS, KANSAS
Recorded By	JEFF LUEBBERS
Witnessed By	KEN LEBLANC

<<< Fold Here >>>

All interpretations are opinions based on inferences from electrical or other measurements and we cannot and do not guarantee the accuracy or correctness of any interpretation, and we shall not, except in the case of gross or willful negligence on our part, be liable or responsible for any loss, costs, damages, or expenses incurred or sustained by anyone resulting from any interpretation made by any of our officers, agents or employees. These interpretations are also subject to our general terms and conditions set out in our current Price Schedule.

Comments

THANK YOU FOR USING SUPERIOR WELL SERVICE HAYS, KANSAS (785) 628-6395
DIRECTIONS
FORD, KS. (HWY 400 & SADDLE RD.) 8 W. TO RD. "118", 7 S. TO "WILDFIRE RD.", 1 E., N. INTO



SUPERIOR
Hays,
Kansas

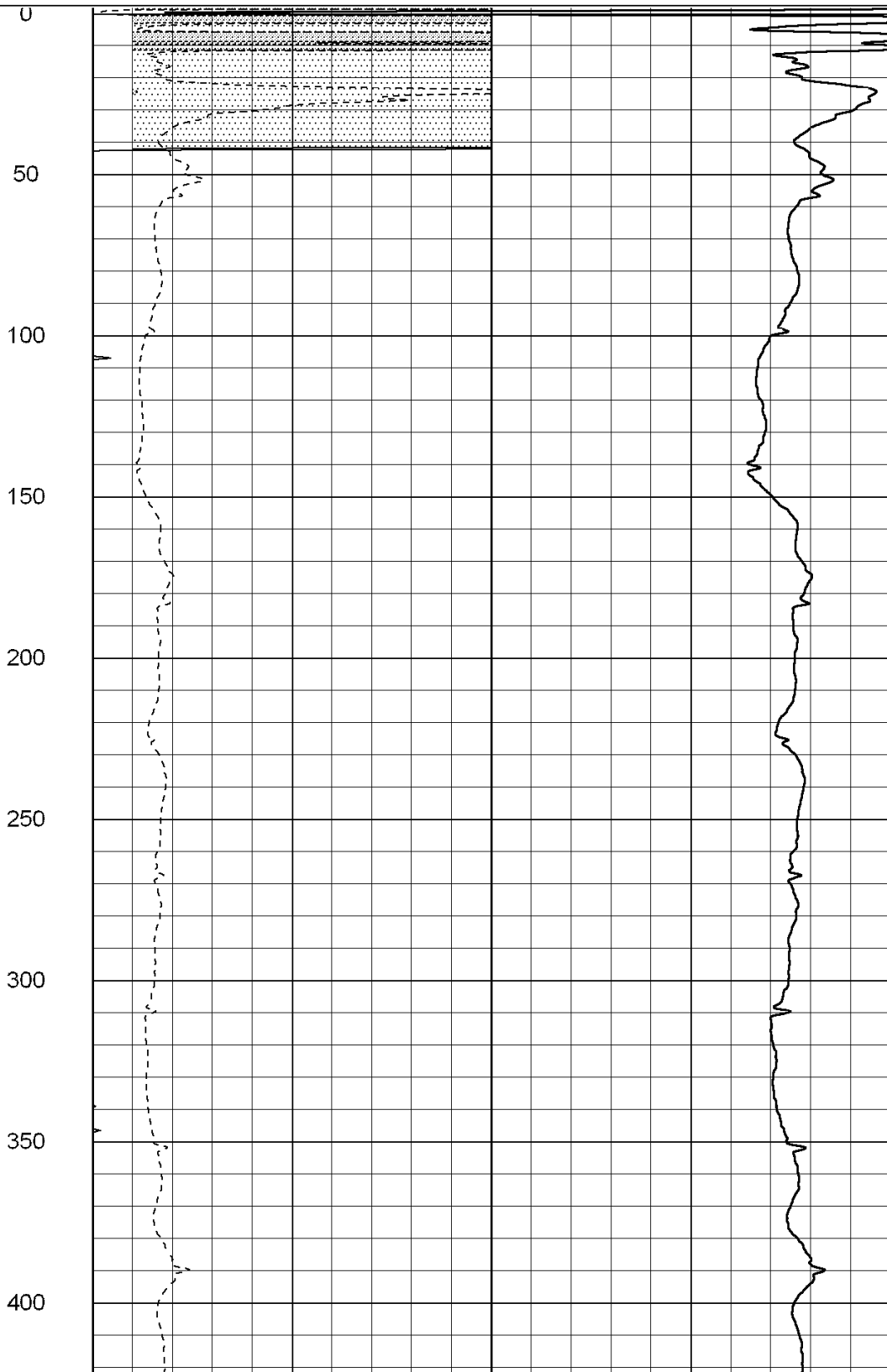
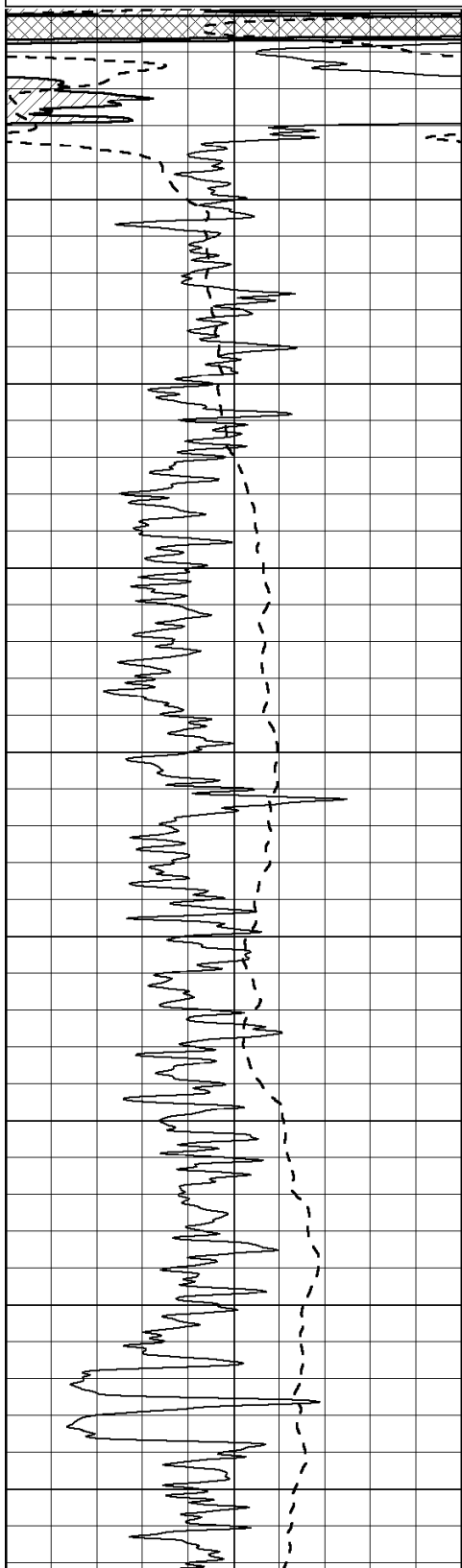
MAIN SECTION

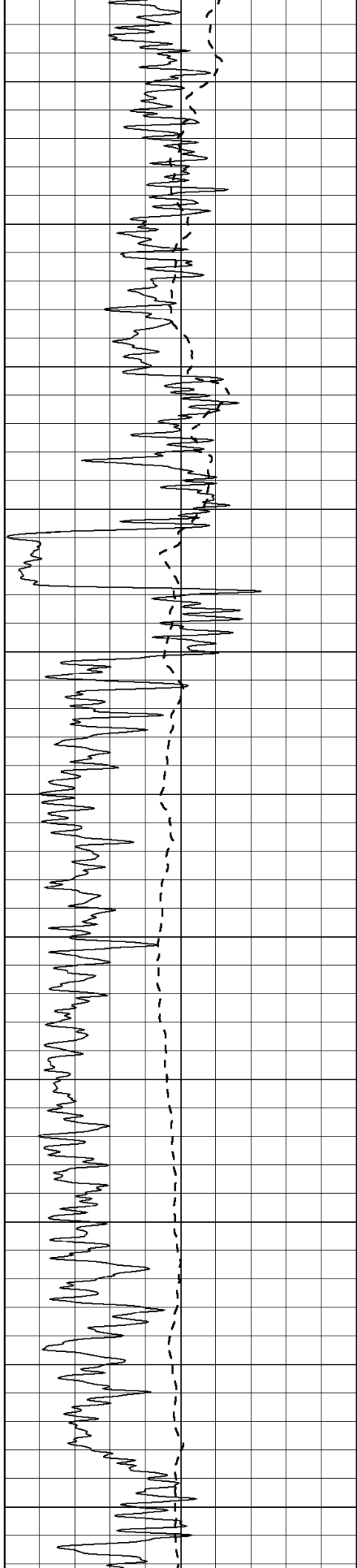
Database File: 004371pe.db
 Dataset Pathname: pass3.8
 Presentation Format: dil2
 Dataset Creation: Sat Nov 14 15:24:06 2009 by Calc Open-Cased 060407
 Charted by: Depth in Feet scaled 1:600

0	Gamma Ray (GAPI)	150
-100	SP (mV)	100

0	RLL3 (Ohm-m)	50
0	RILD (Ohm-m)	50

1000	CILD (mmho-m)		0
50	RILD X10 (Ohm-m)	500	
50	RLL3 X10 (Ohm-m)	500	





450

500

550

600

650

700

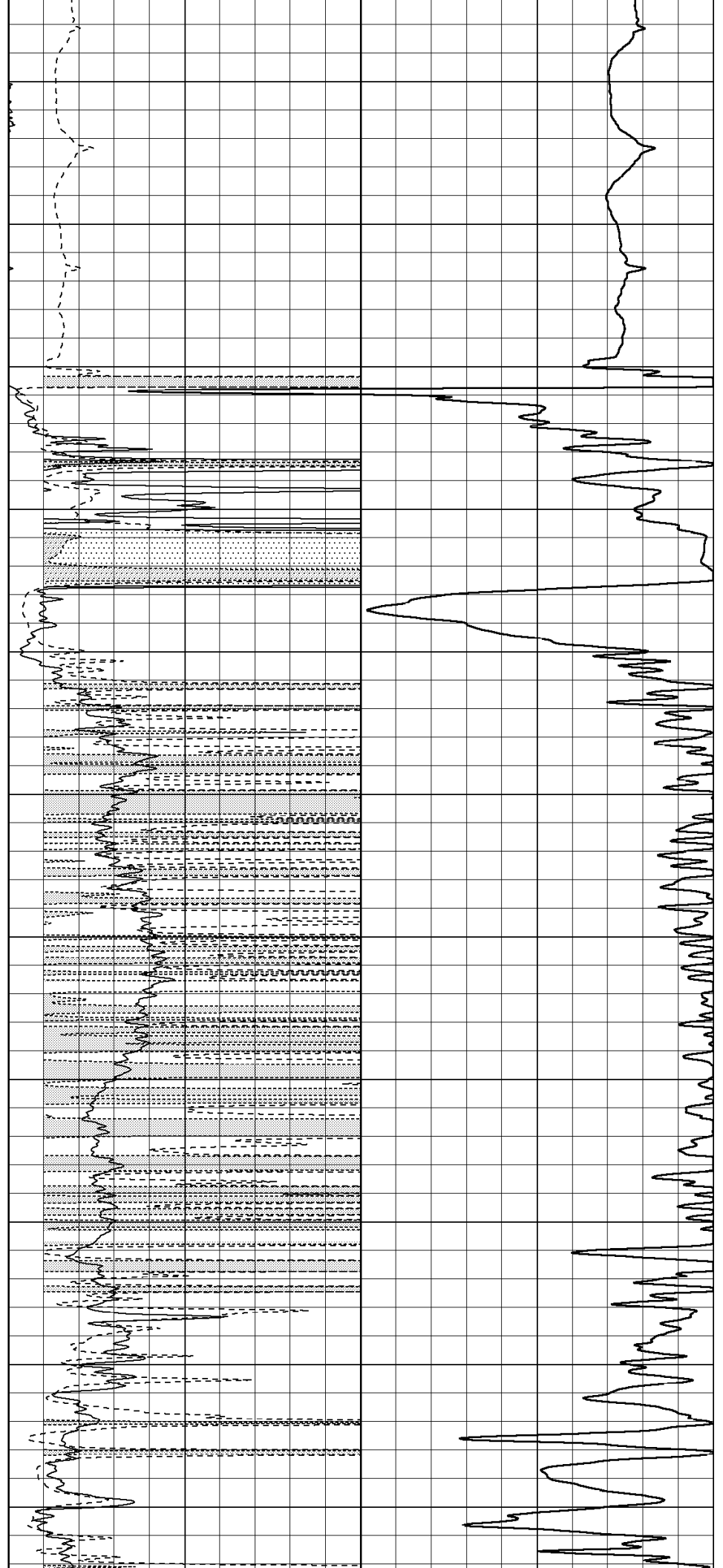
750

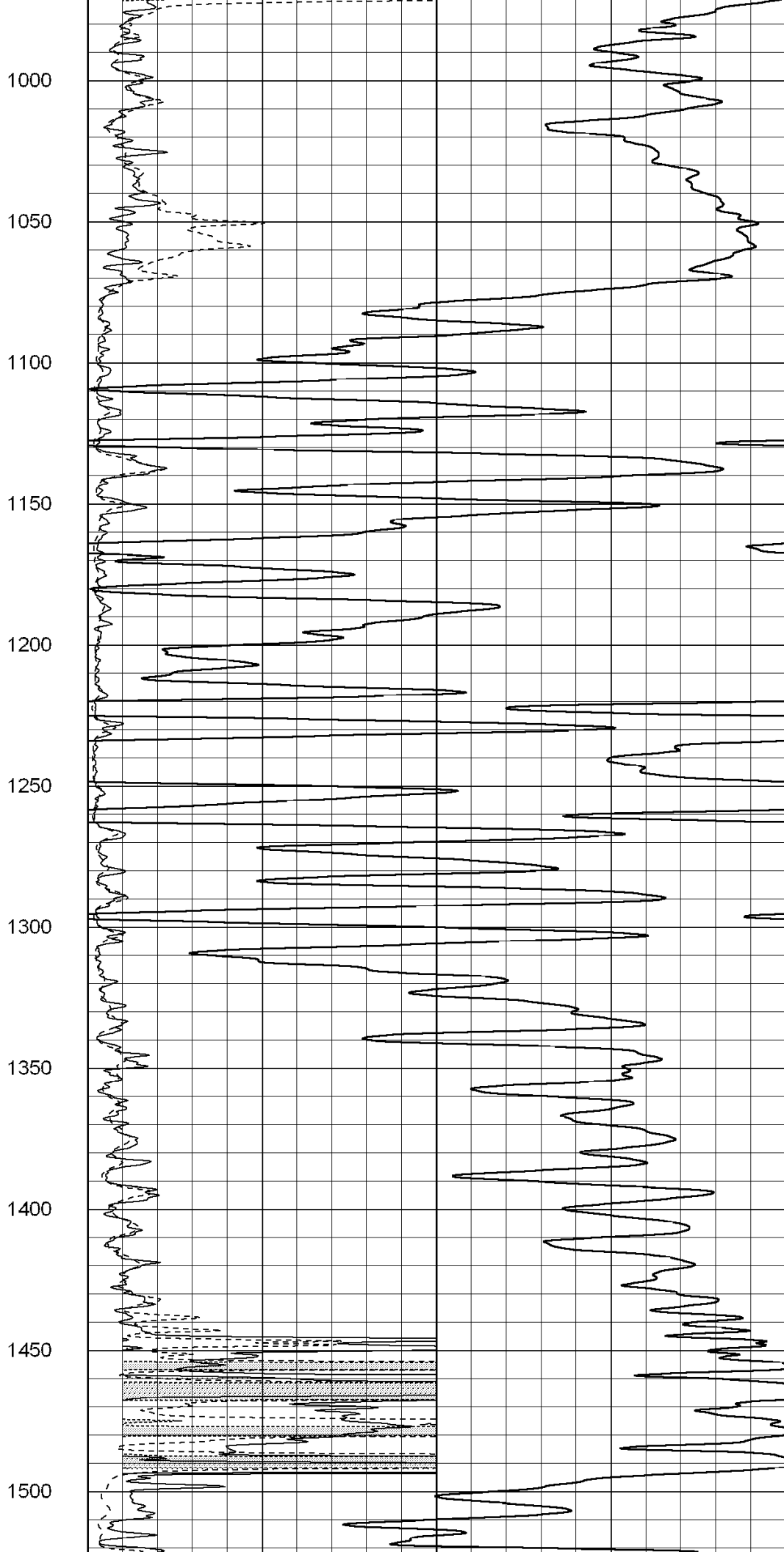
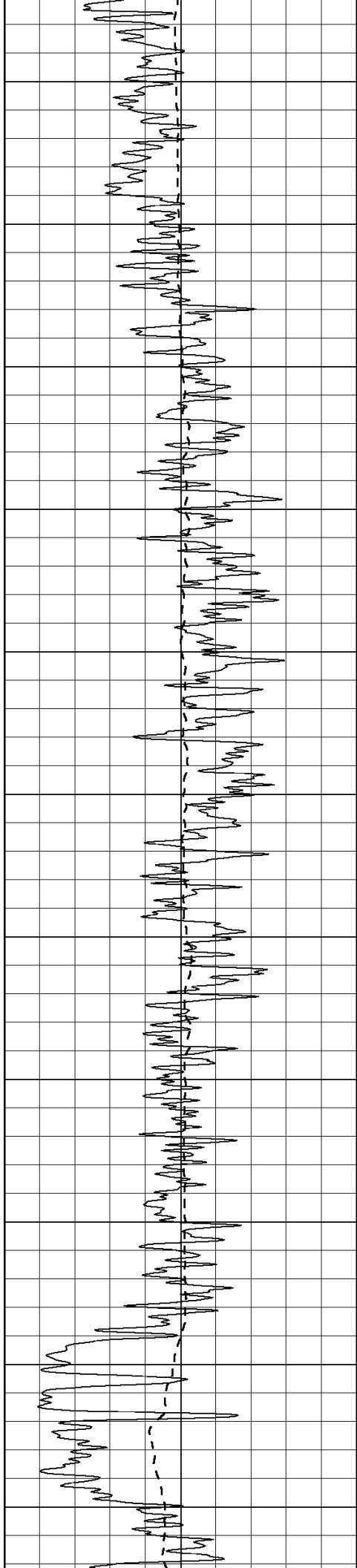
800

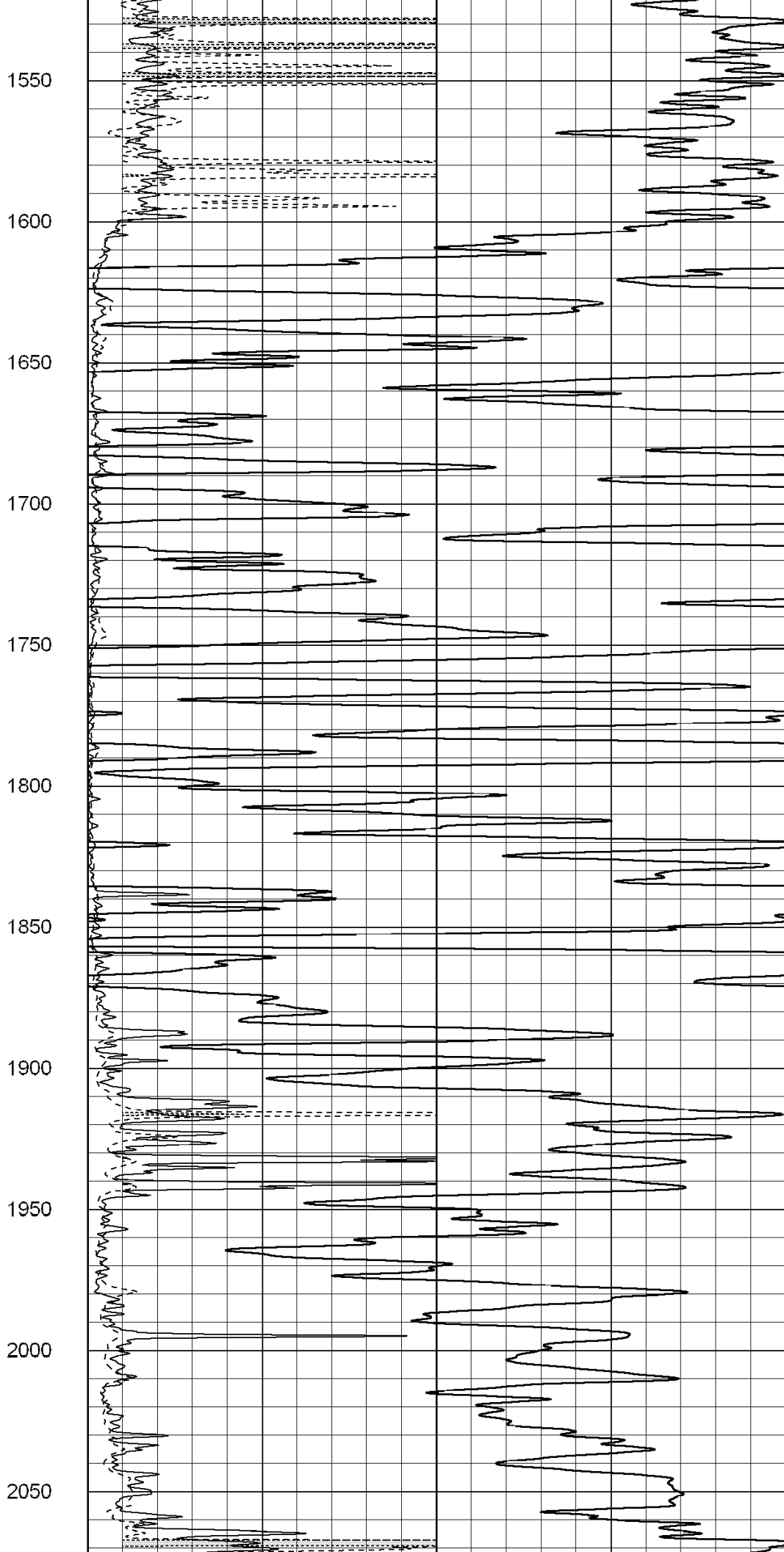
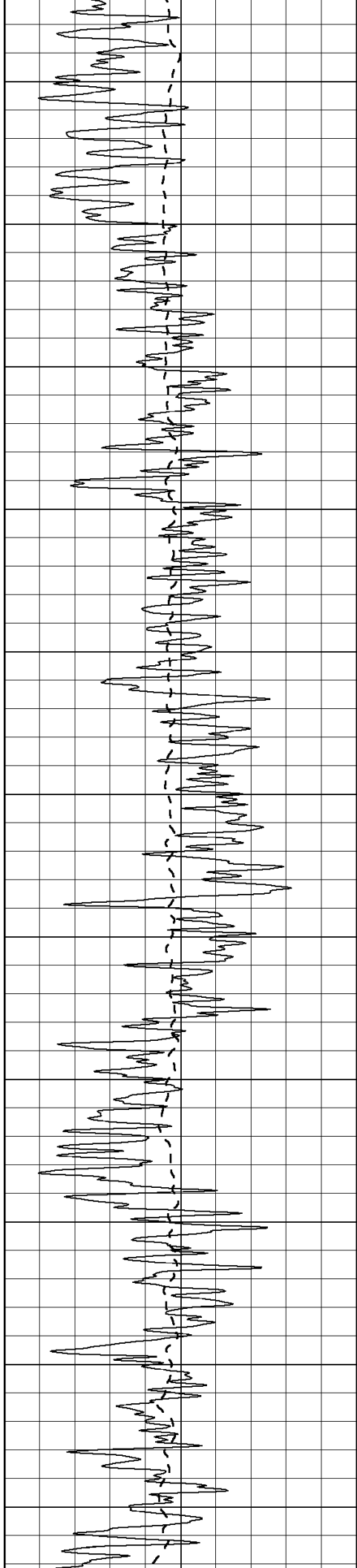
850

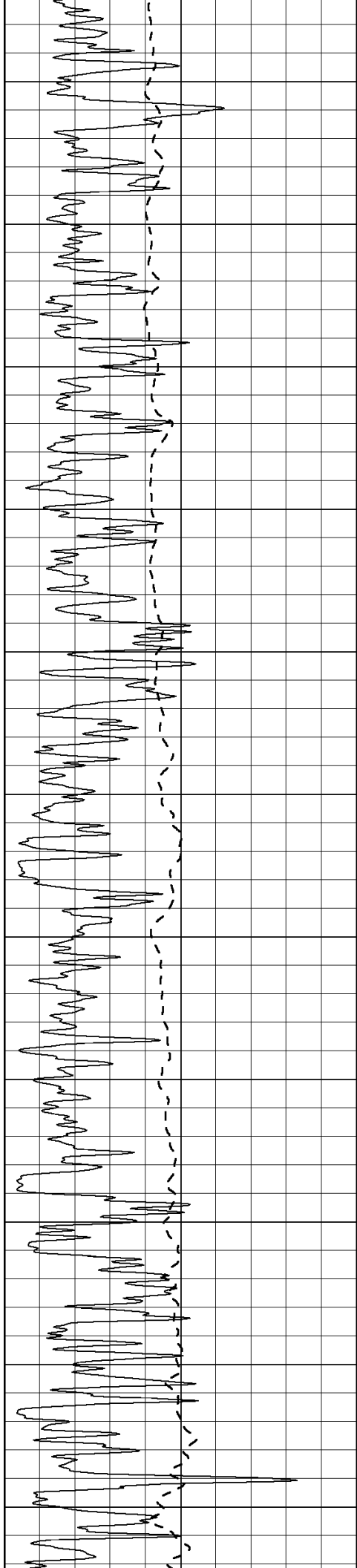
900

950









2100

2150

2200

2250

2300

2350

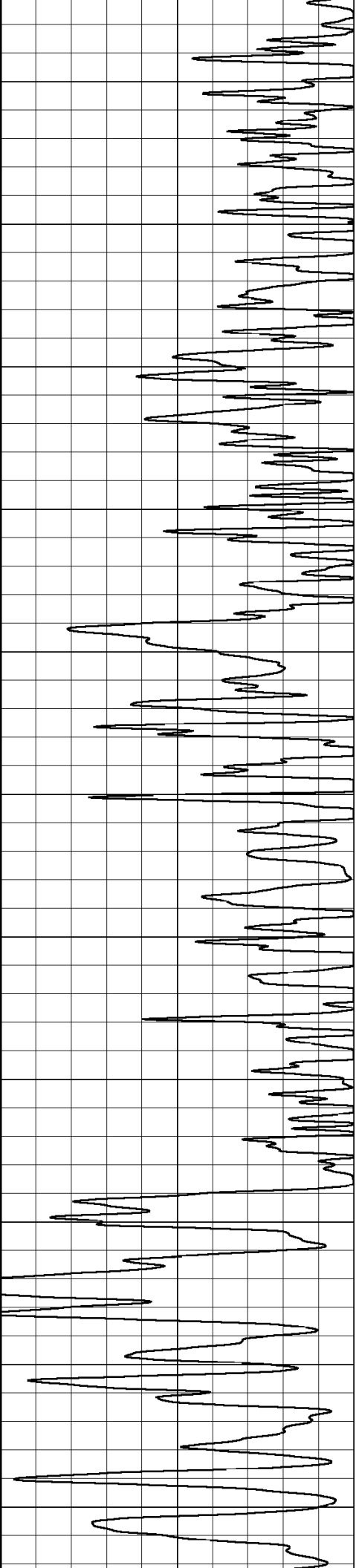
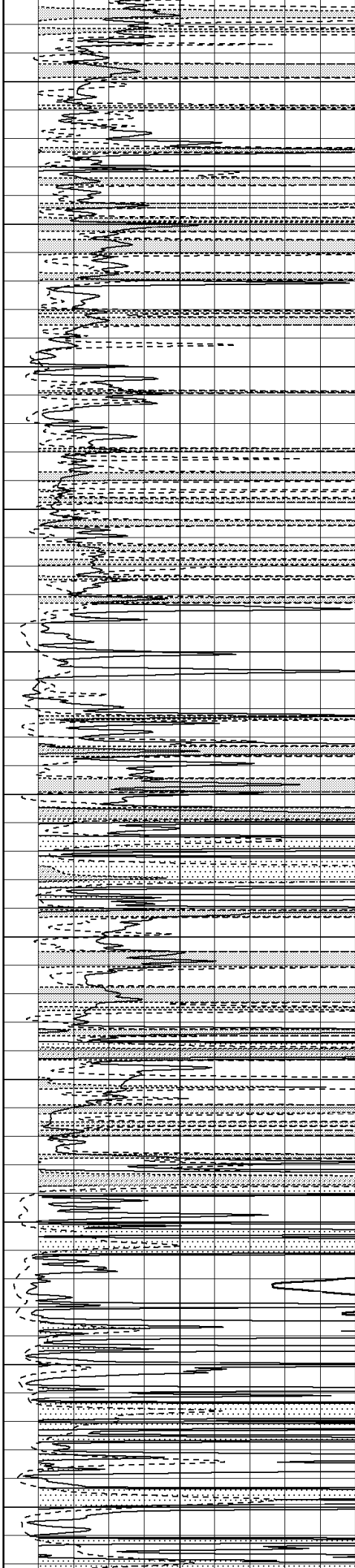
2400

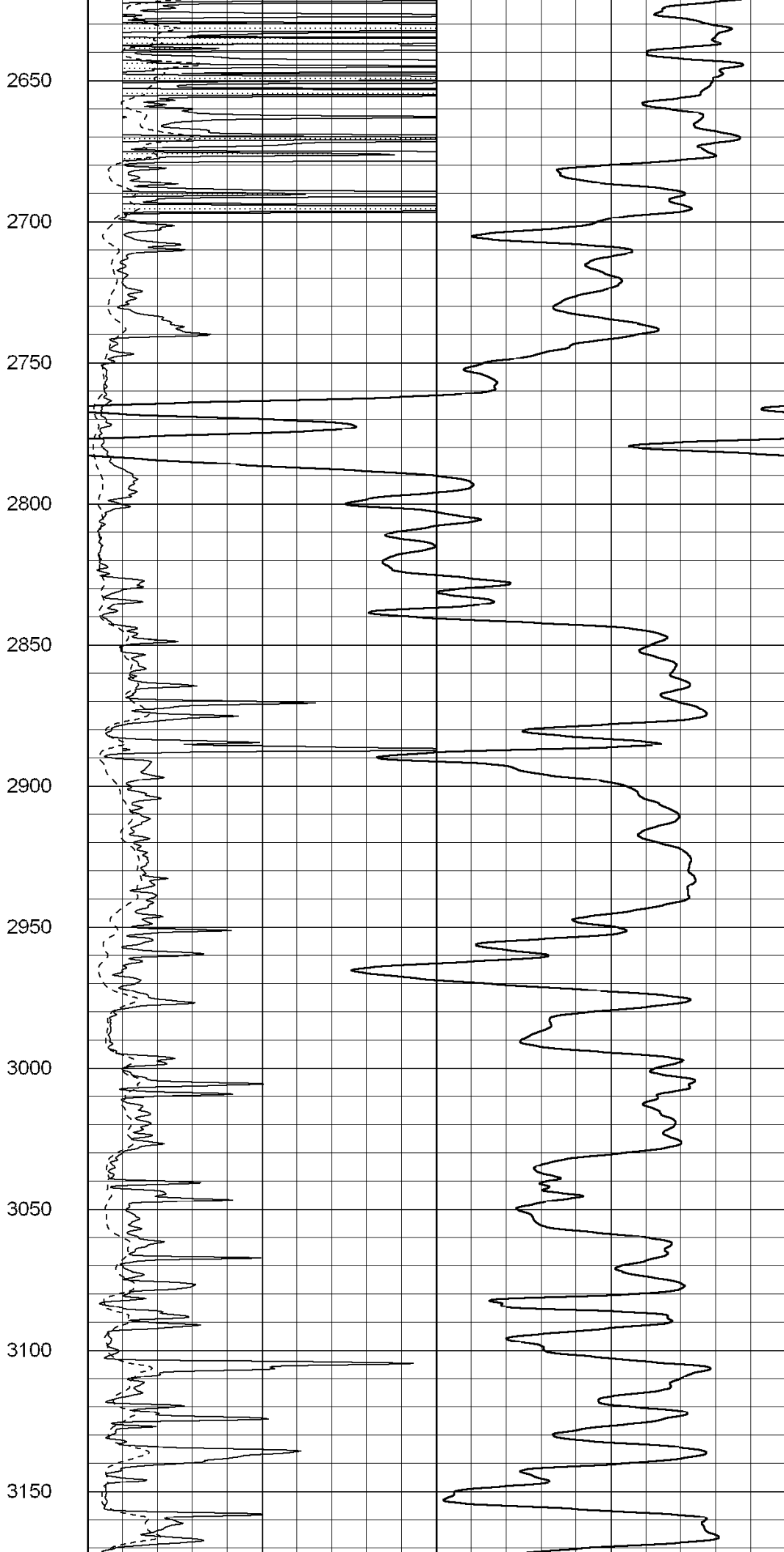
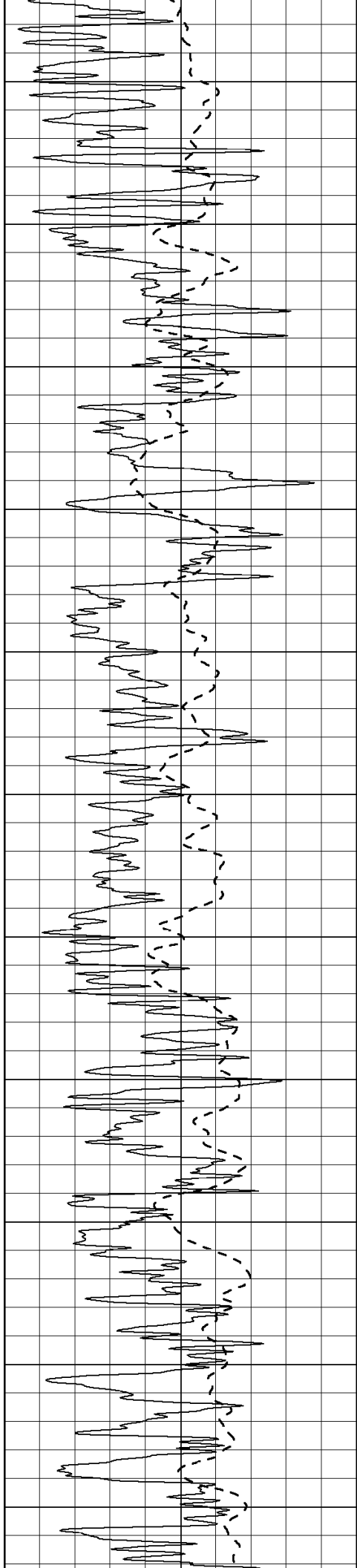
2450

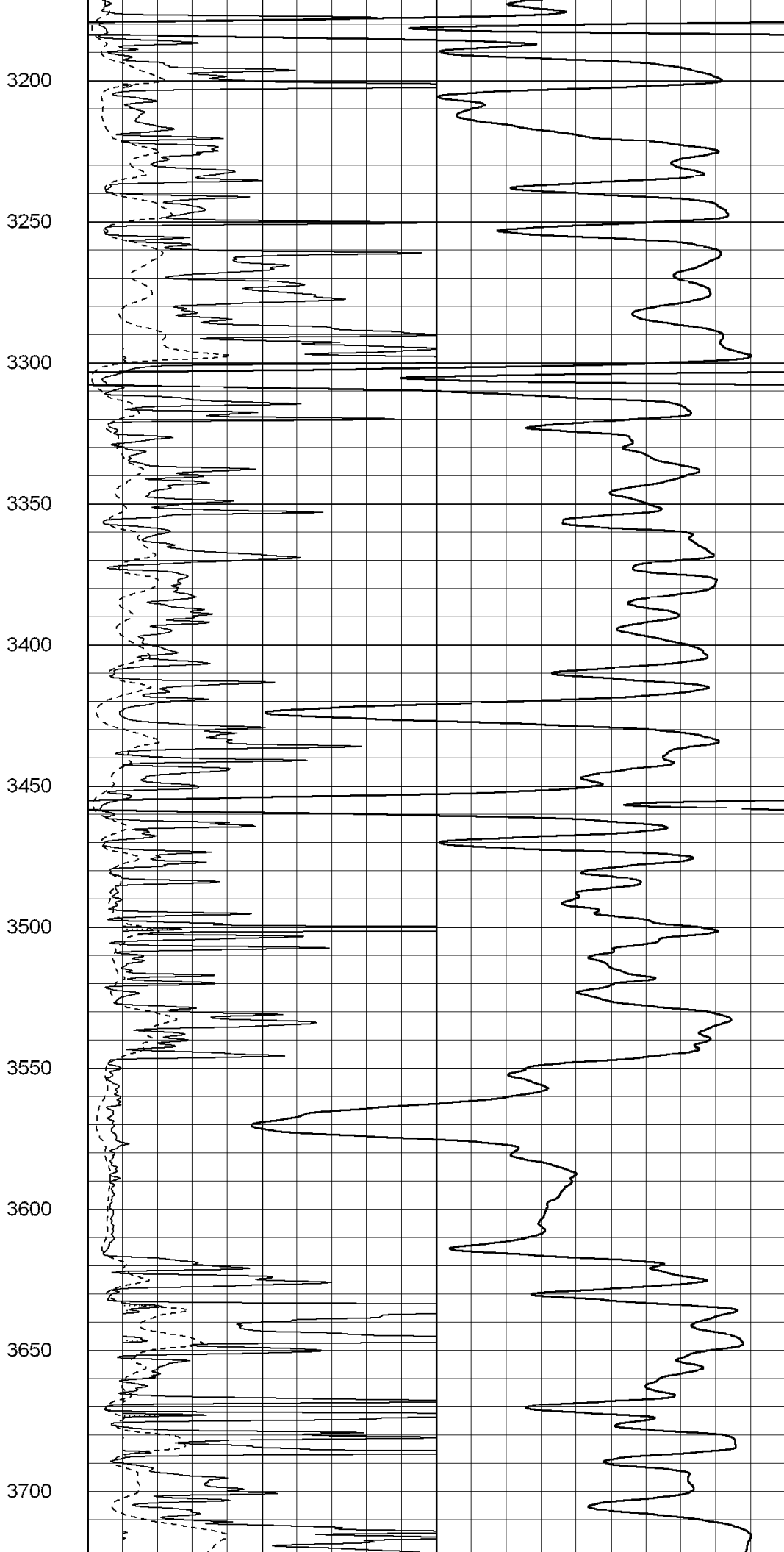
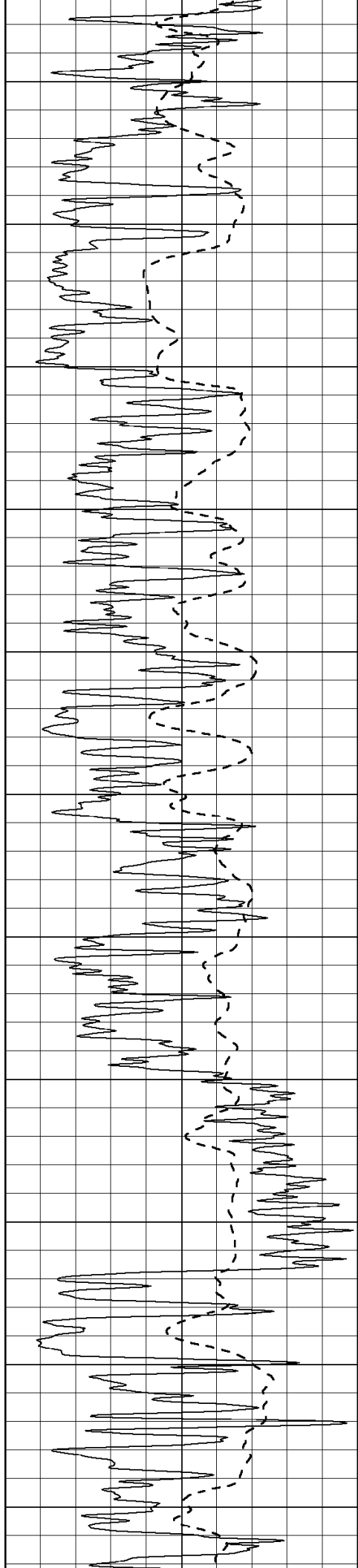
2500

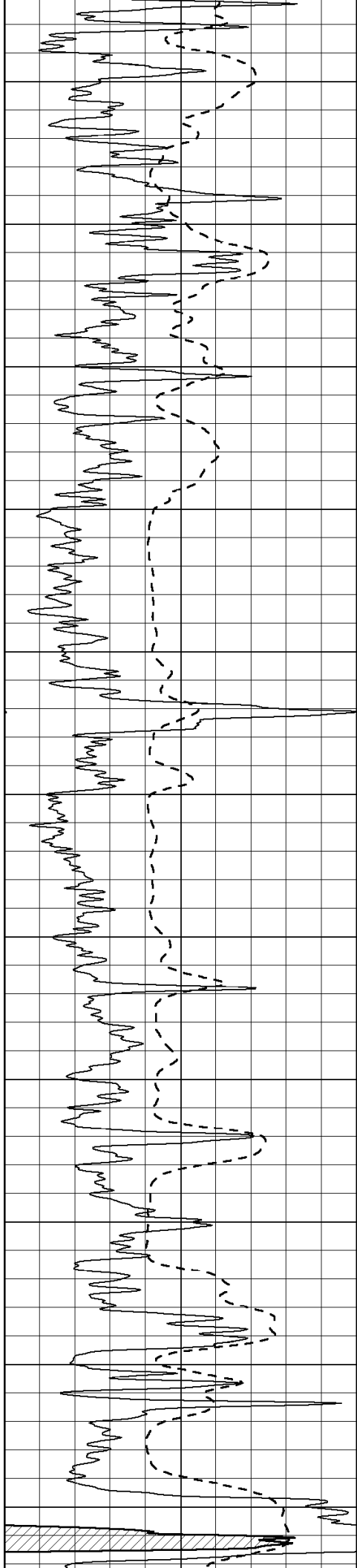
2550

2600









3750

3800

3850

3900

3950

4000

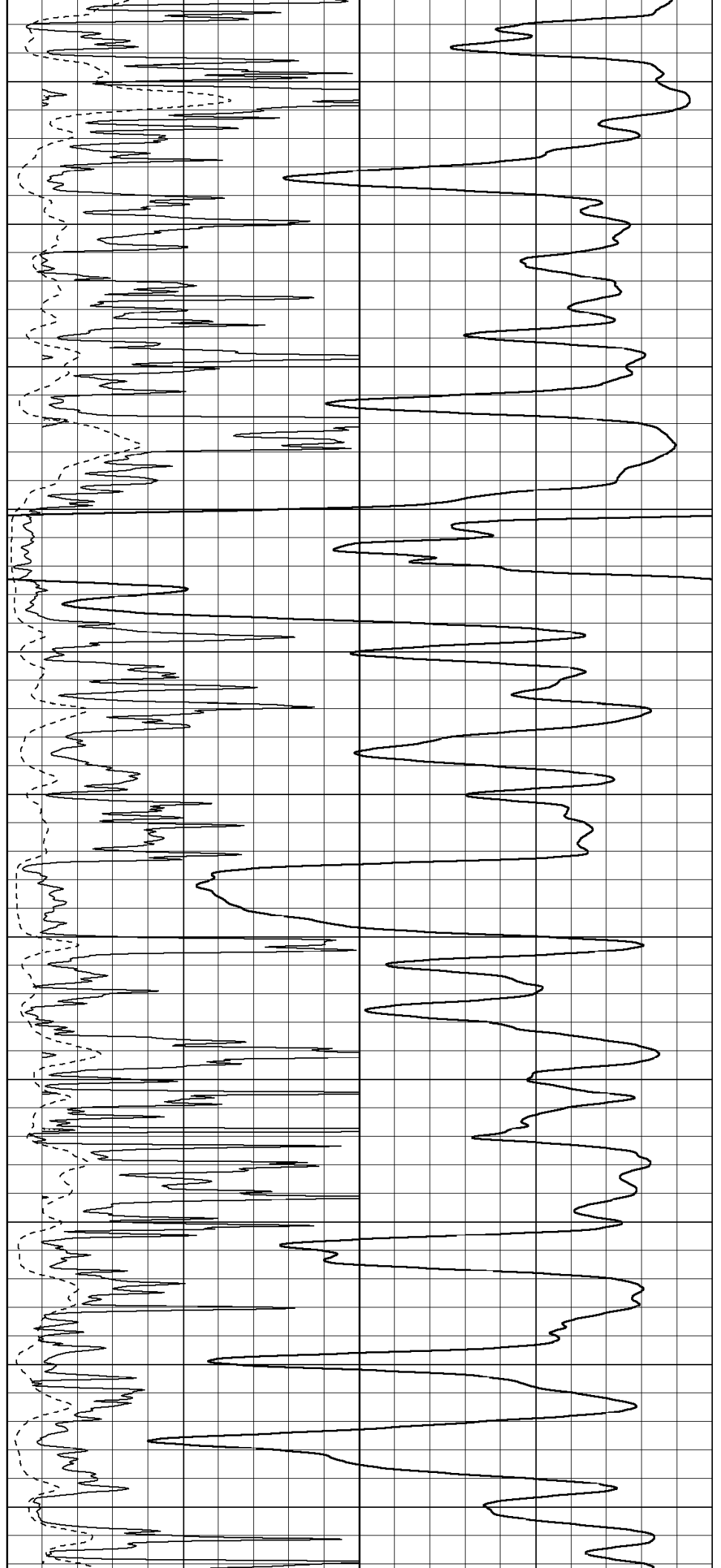
4050

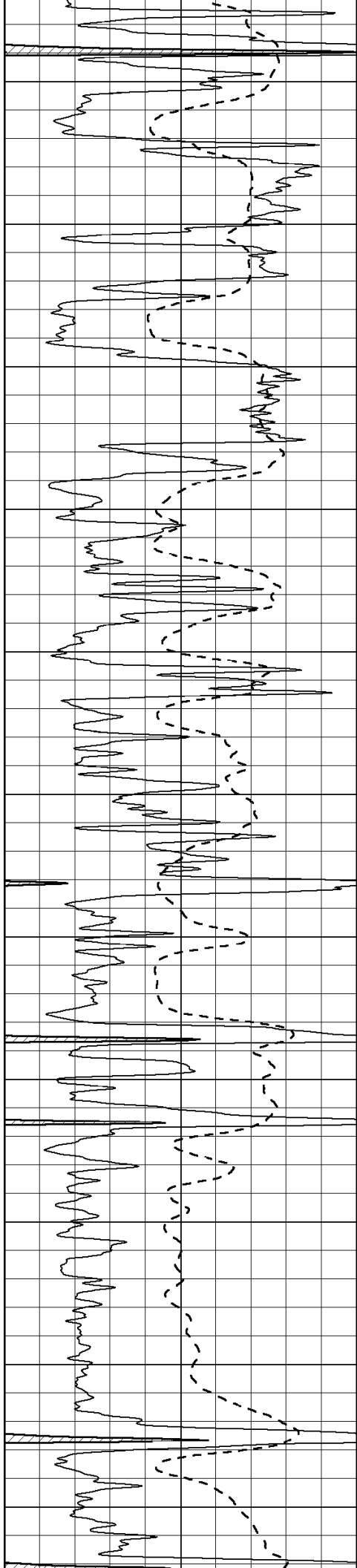
4100

4150

4200

4250





4300

4350

4400

4450

4500

4550

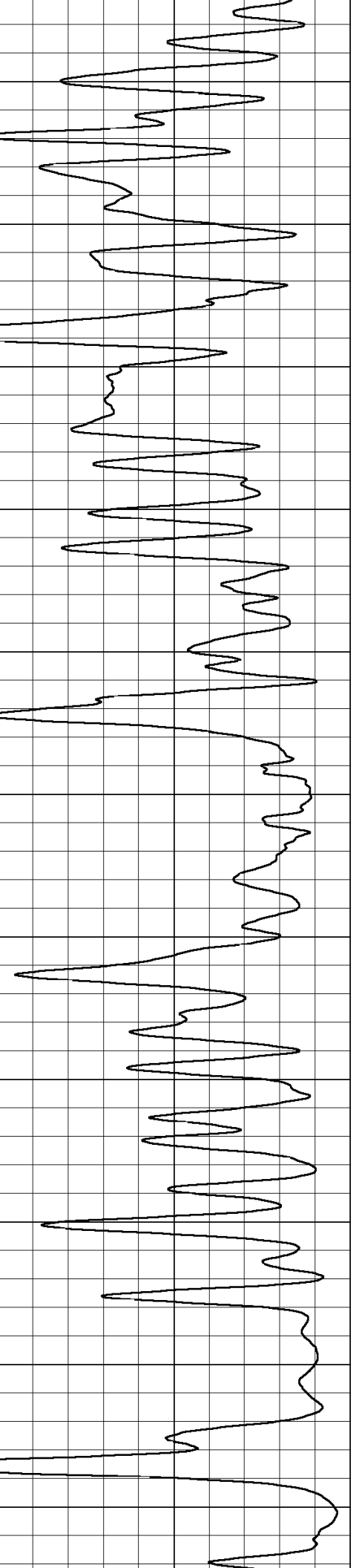
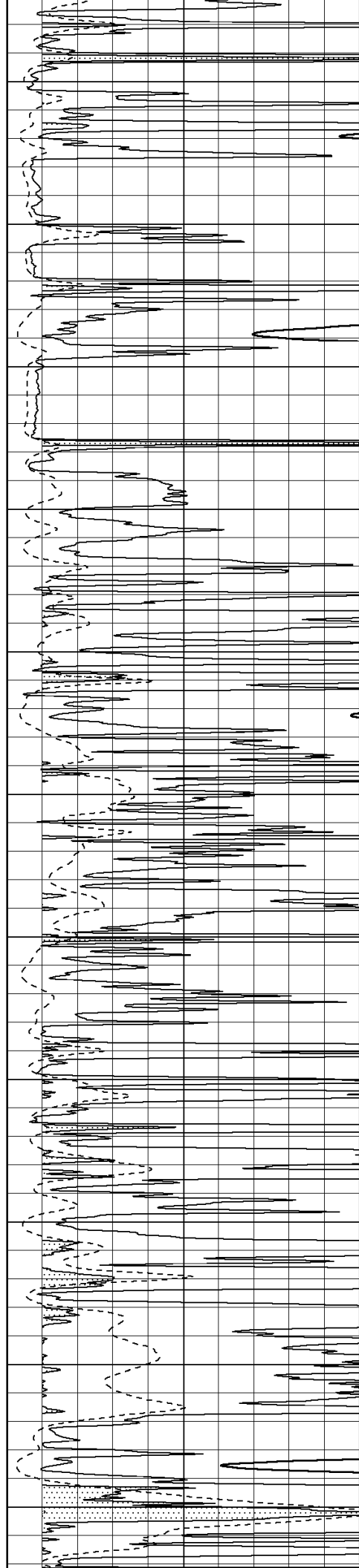
4600

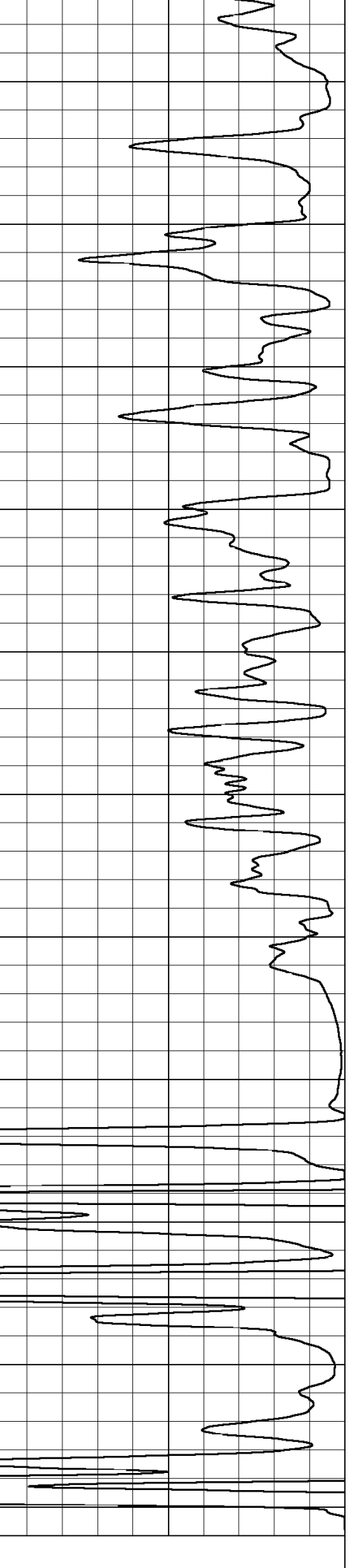
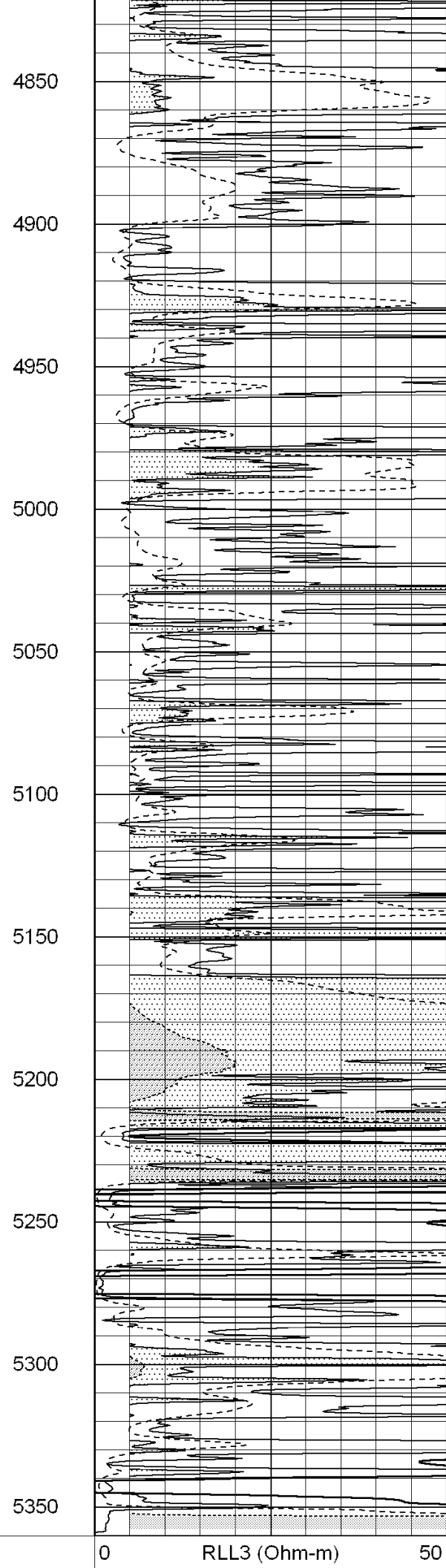
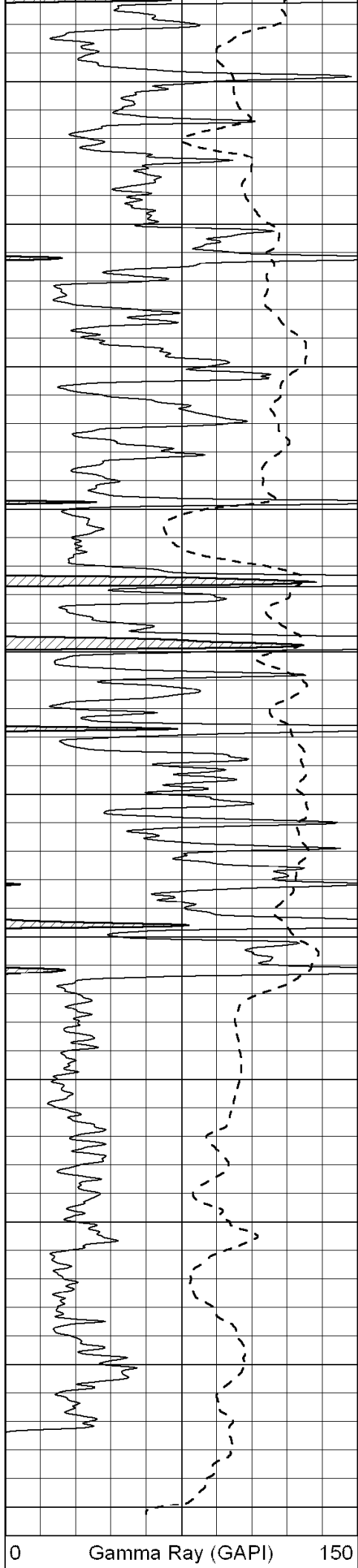
4650

4700

4750

4800





-100 SP (mV) 100

0 RILD (Ohm-m) 50

1000 CILD (mmho-m) 0

50 RILD X10 (Ohm-m) 500

50 RLL3 X10 (Ohm-m) 500



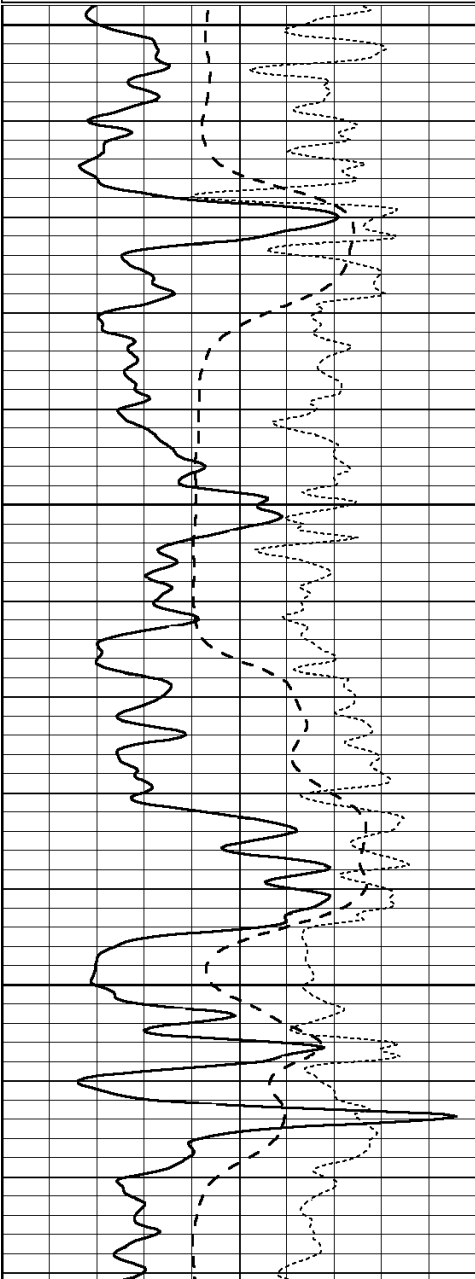
SUPERIOR
Hays,
Kansas

MAIN SECTION

Database File: 004371pe.db
Dataset Pathname: pass3.8
Presentation Format: dil
Dataset Creation: Sat Nov 14 15:24:06 2009 by Calc Open-Cased 060407
Charted by: Depth in Feet scaled 1:240

0 GAMMA RAY (GAPI) 150
-100 SP (mV) 100
-250 Rxo/Rt 50

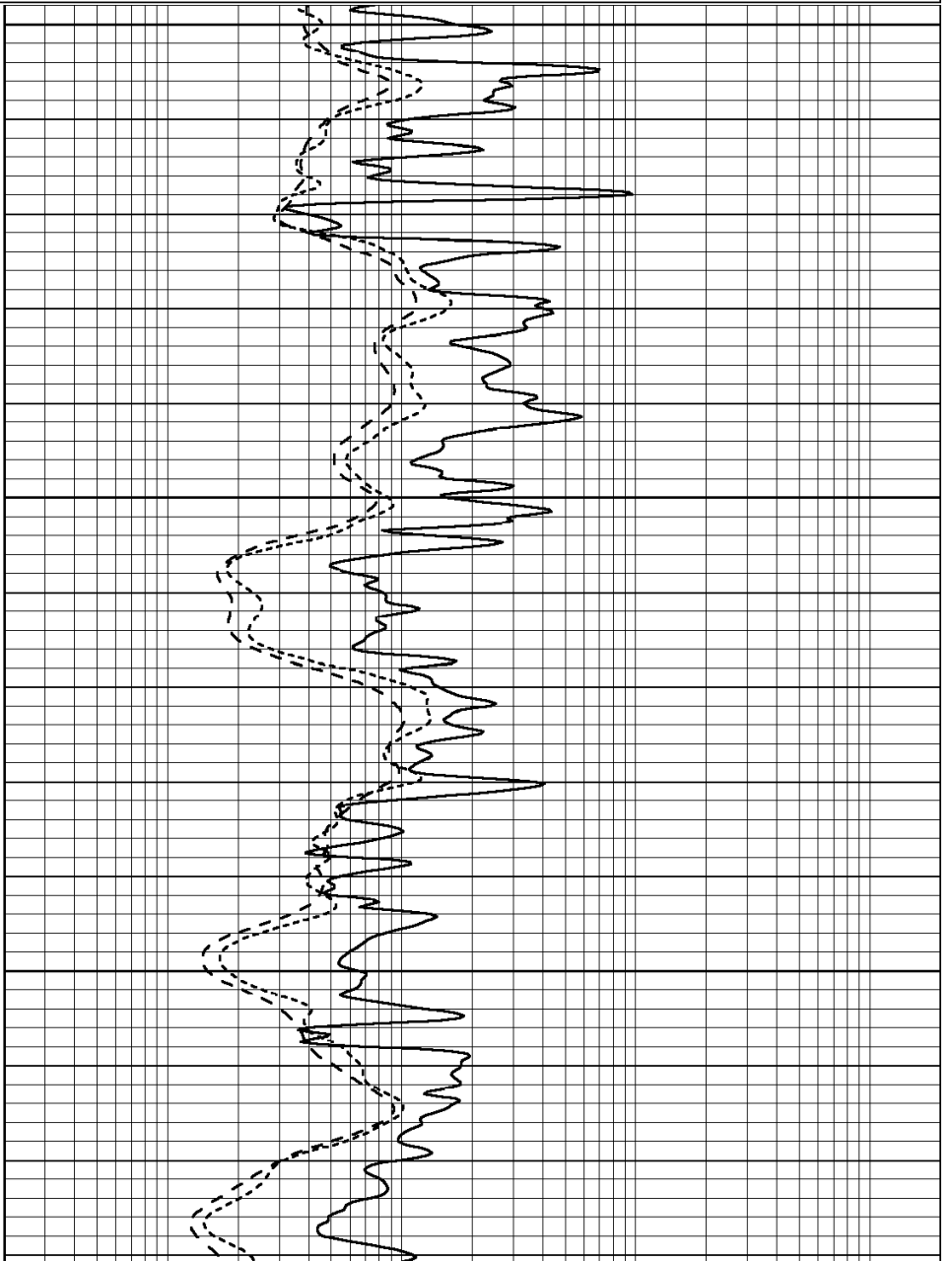
0.2 SHALLOW GUARD (Ohm-m) 2000
0.2 DEEP INDUCTION (Ohm-m) 2000
0.2 MEDIUM INDUCTION (Ohm-m) 2000

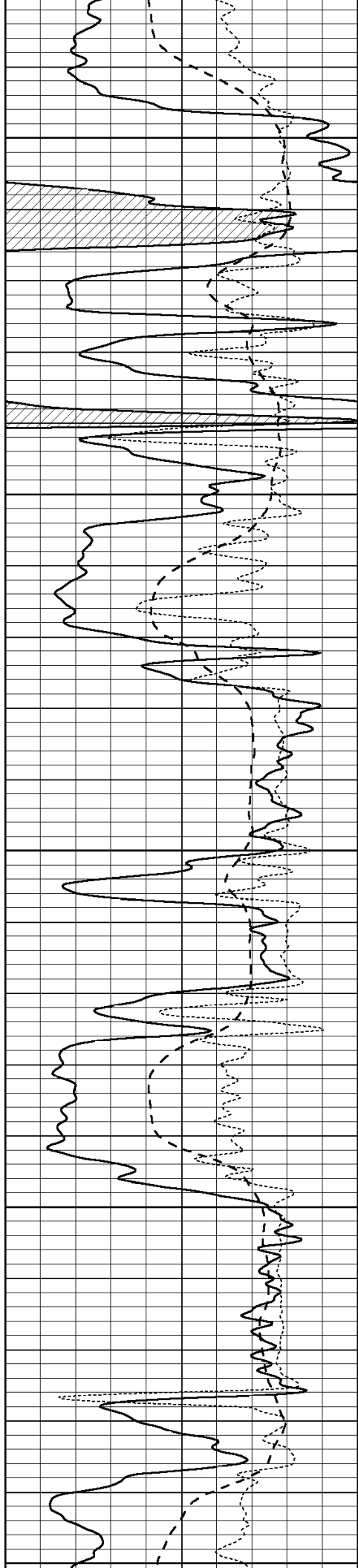


4100

4150

4200





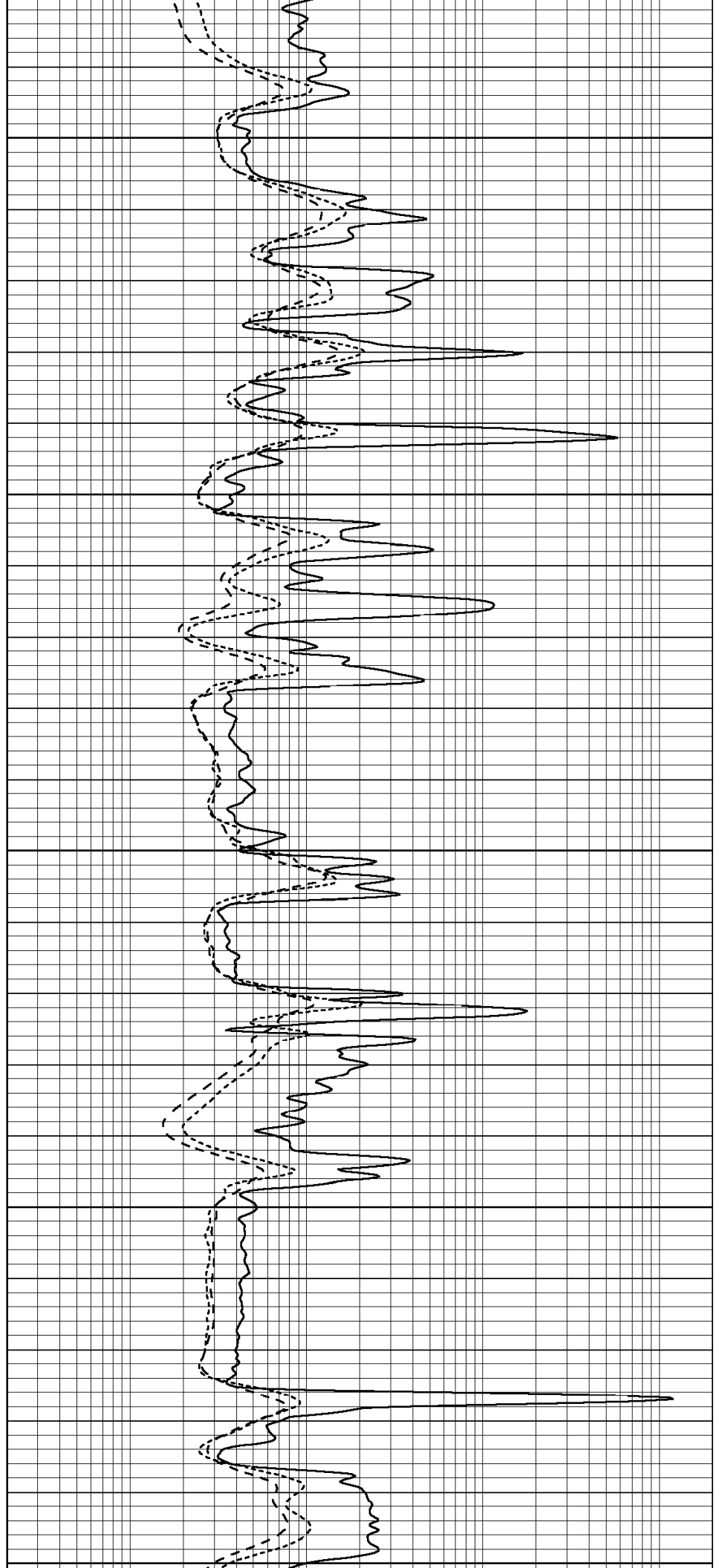
4250

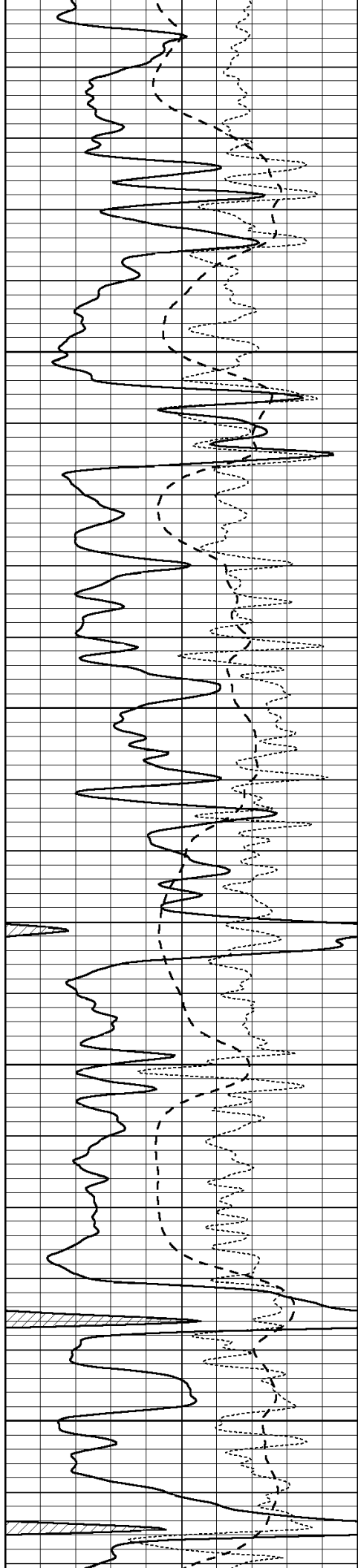
4300

4350

4400

4450



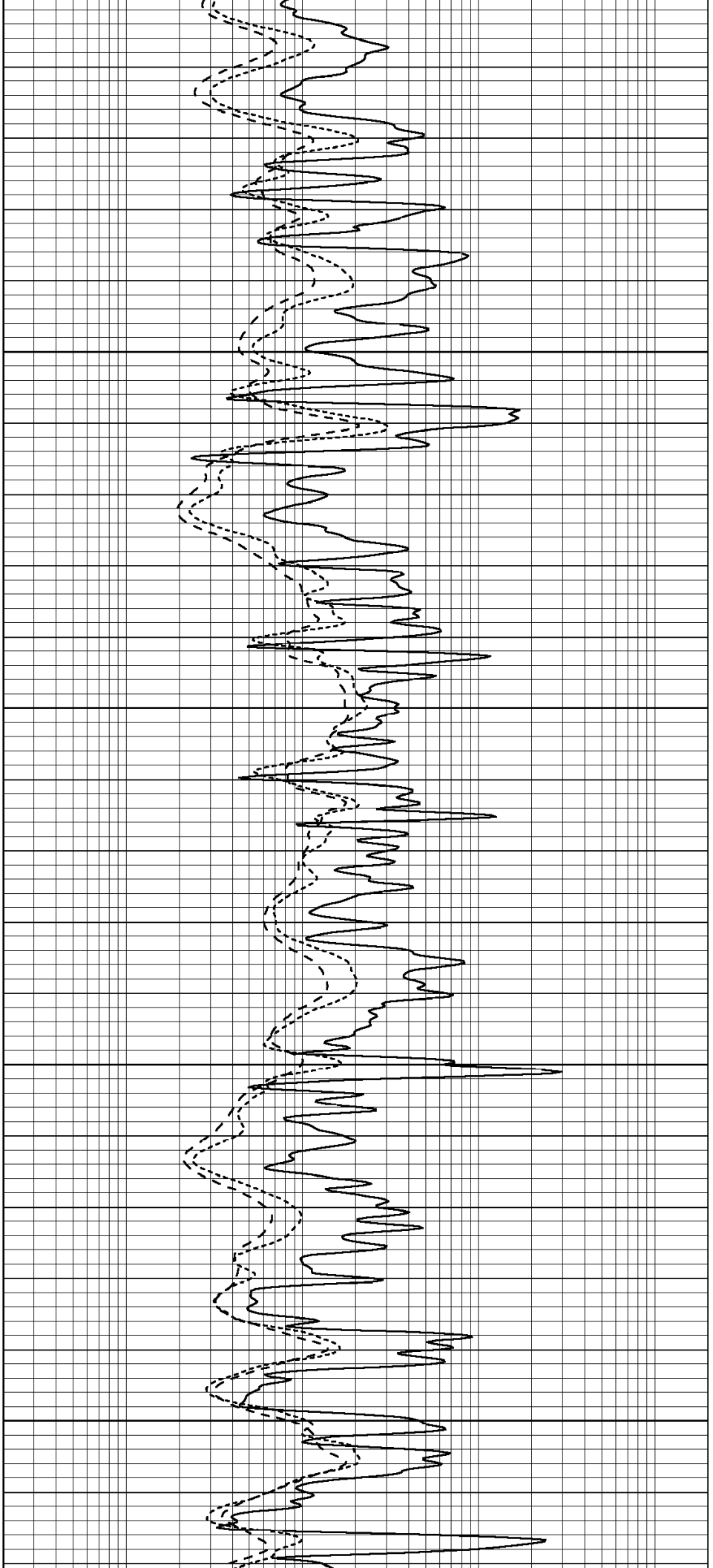


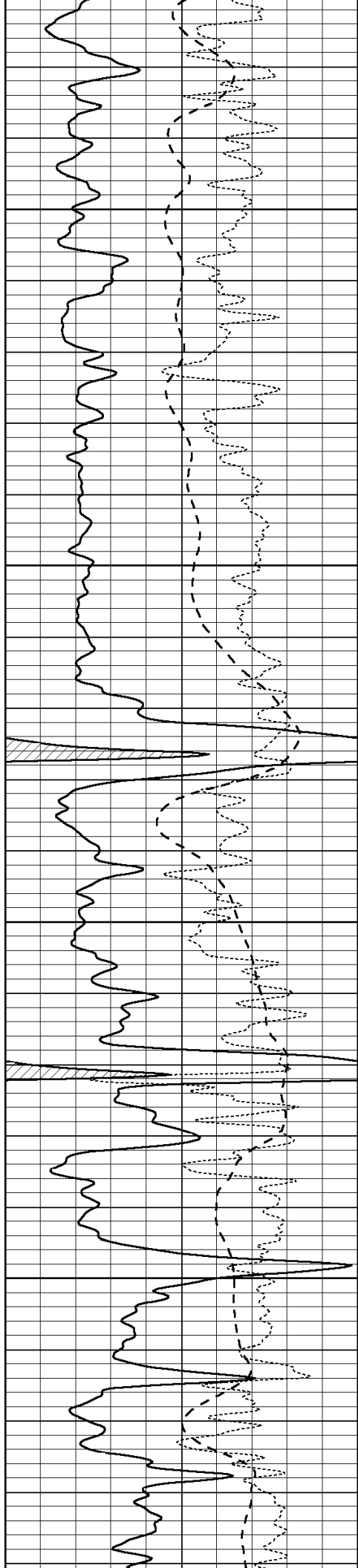
4500

4550

4600

4650



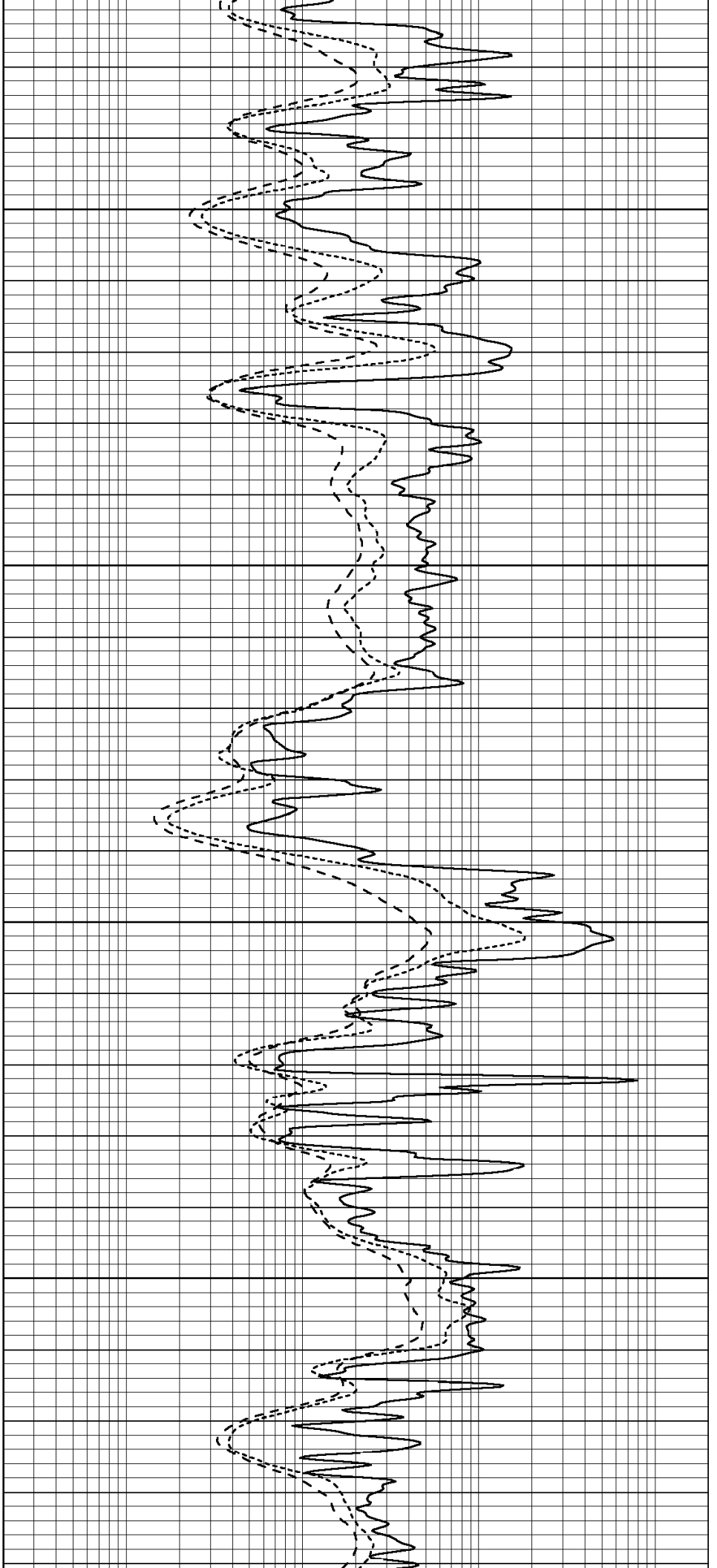


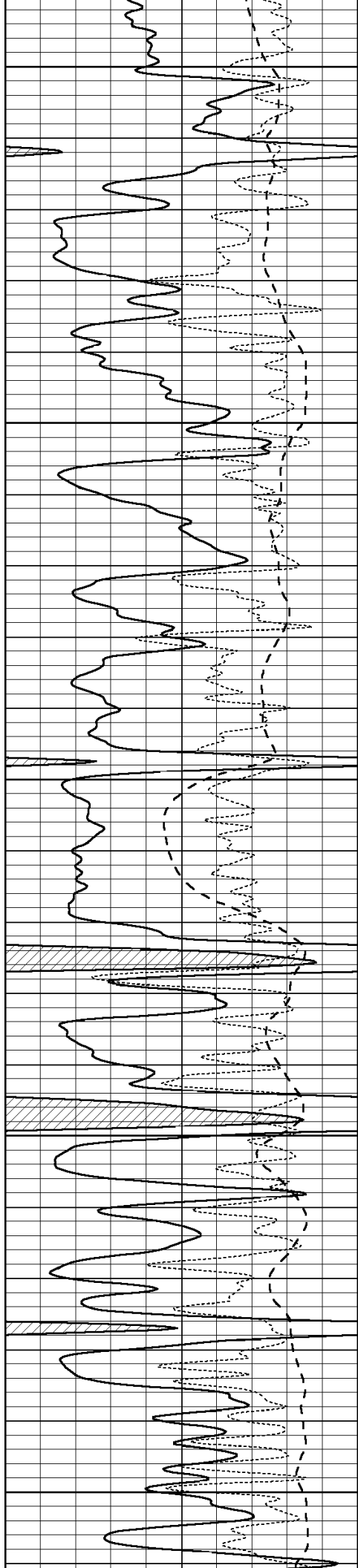
4700

4750

4800

4850





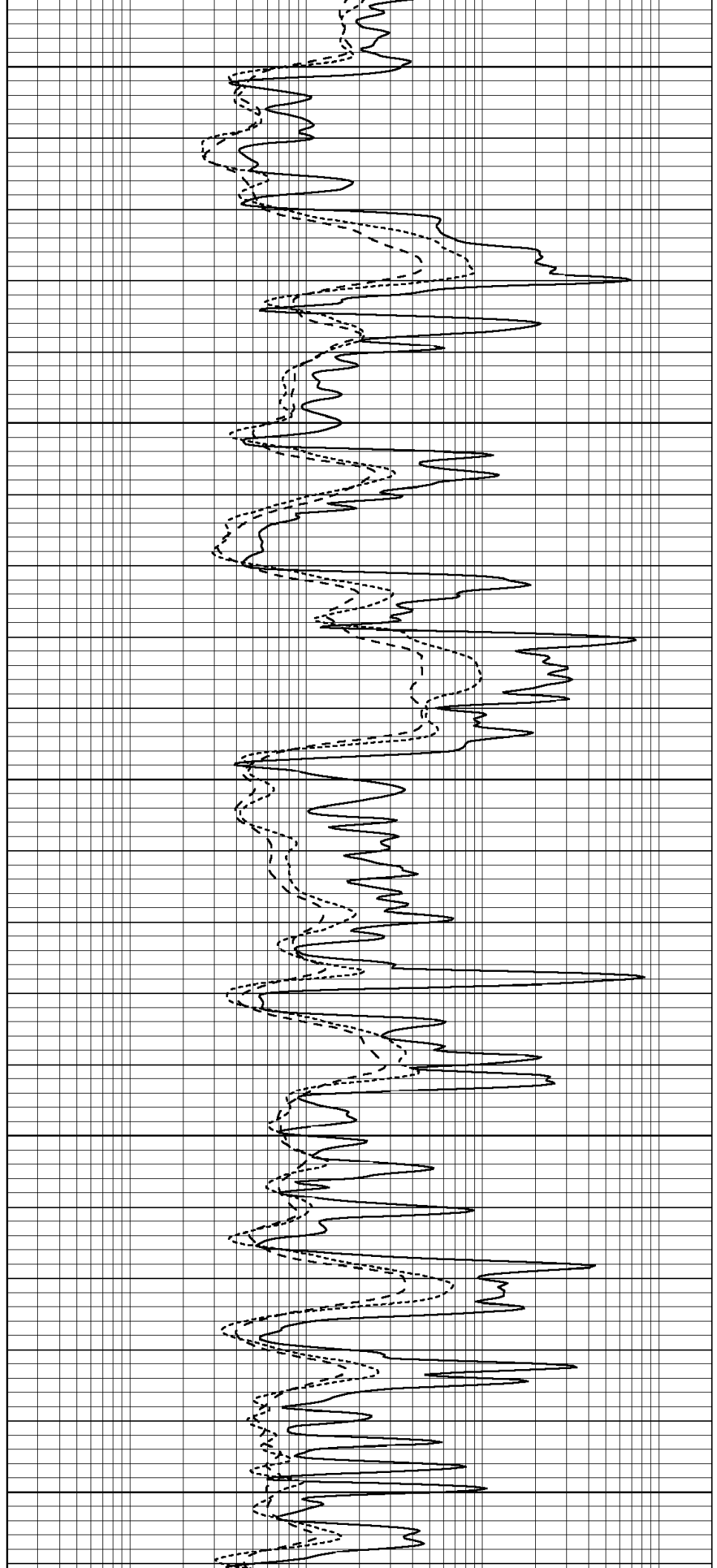
4900

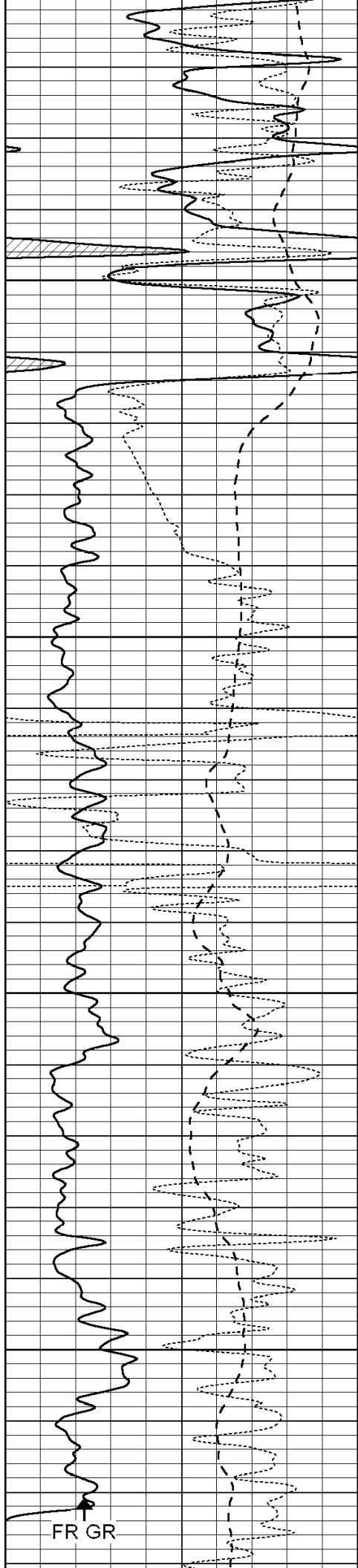
4950

5000

5050

5100



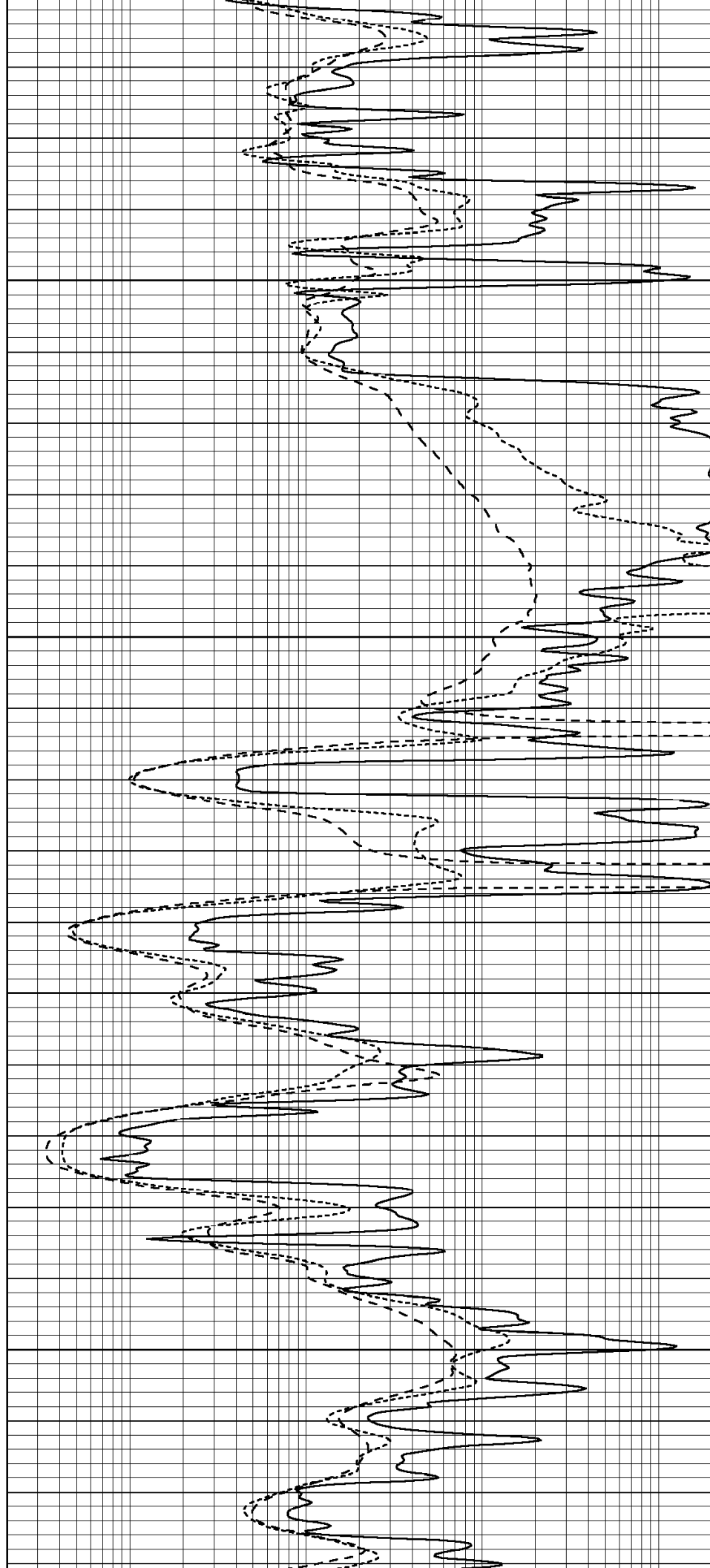


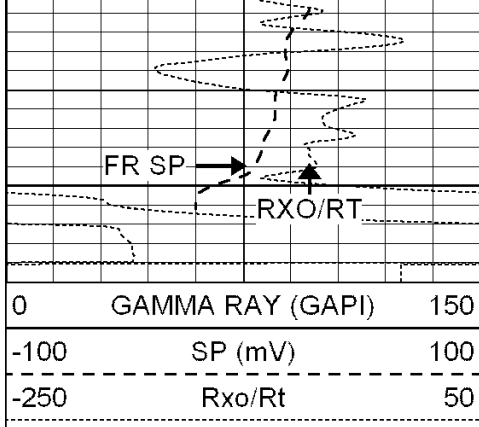
5150

5200

5250

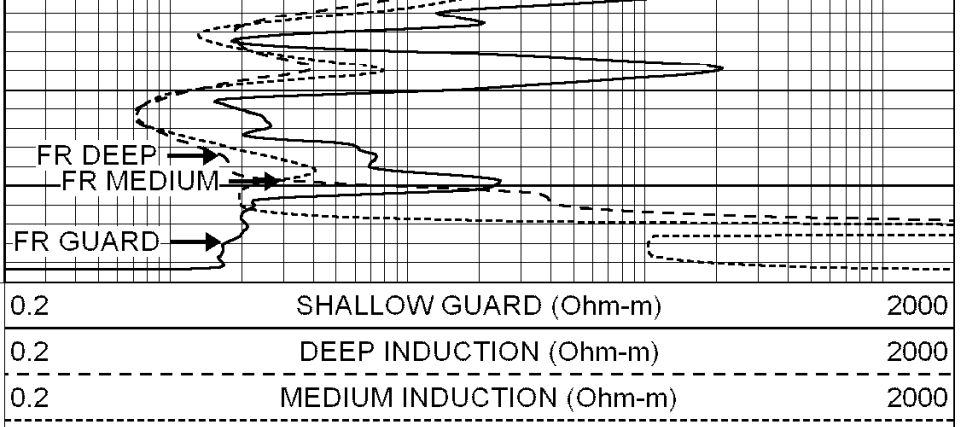
5300





5350
LTD 5358

0	GAMMA RAY (GAPI)	150
-100	SP (mV)	100
-250	Rxo/Rt	50



0.2	SHALLOW GUARD (Ohm-m)	2000
0.2	DEEP INDUCTION (Ohm-m)	2000
0.2	MEDIUM INDUCTION (Ohm-m)	2000



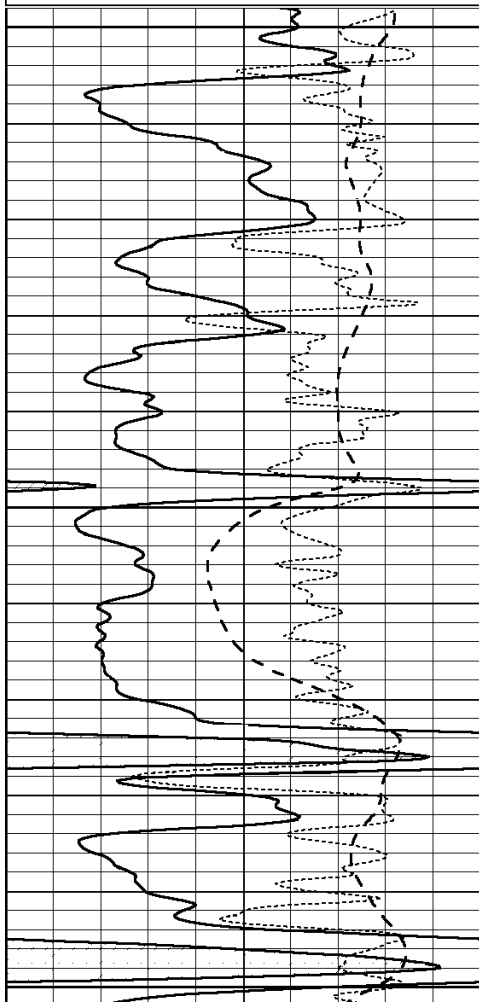
SUPERIOR
Hays,
Kansas

REPEAT SECTION

Database File: 004371pe.db
 Dataset Pathname: pass2.11
 Presentation Format: dil
 Dataset Creation: Sat Nov 14 14:56:20 2009 by Calc Open-Cased 060407
 Charted by: Depth in Feet scaled 1:240

0	GAMMA RAY (GAPI)	150
-100	SP (mV)	100
-250	Rxo/Rt	50

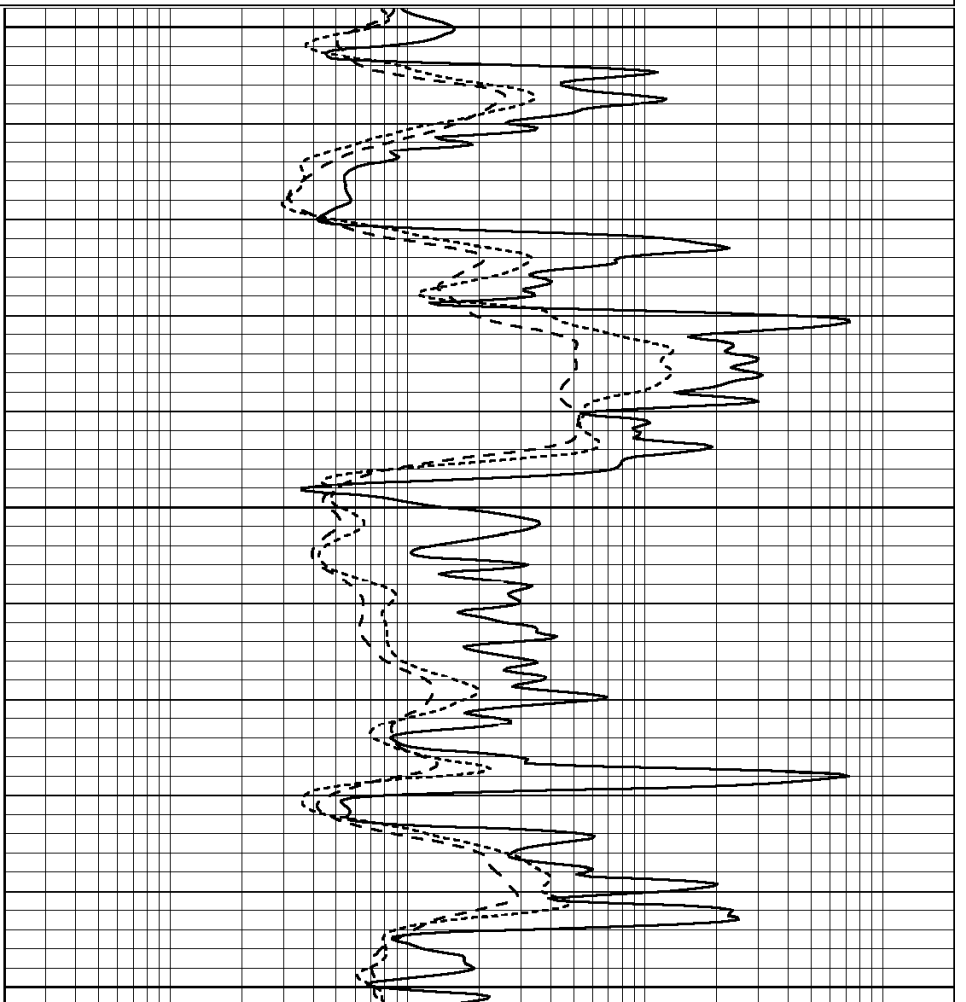
0.2	SHALLOW GUARD (Ohm-m)	2000
0.2	DEEP INDUCTION (Ohm-m)	2000
0.2	MEDIUM INDUCTION (Ohm-m)	2000

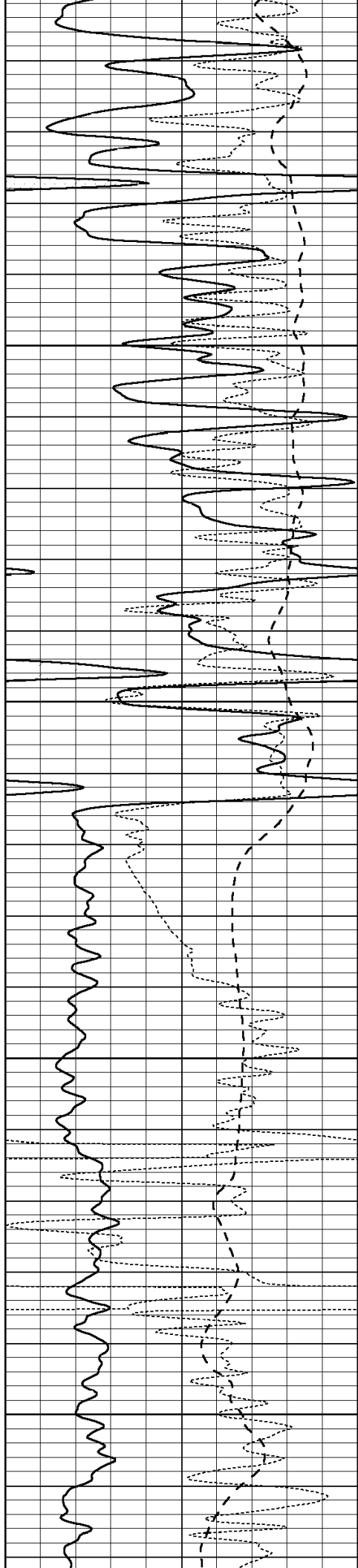


4950

5000

5050



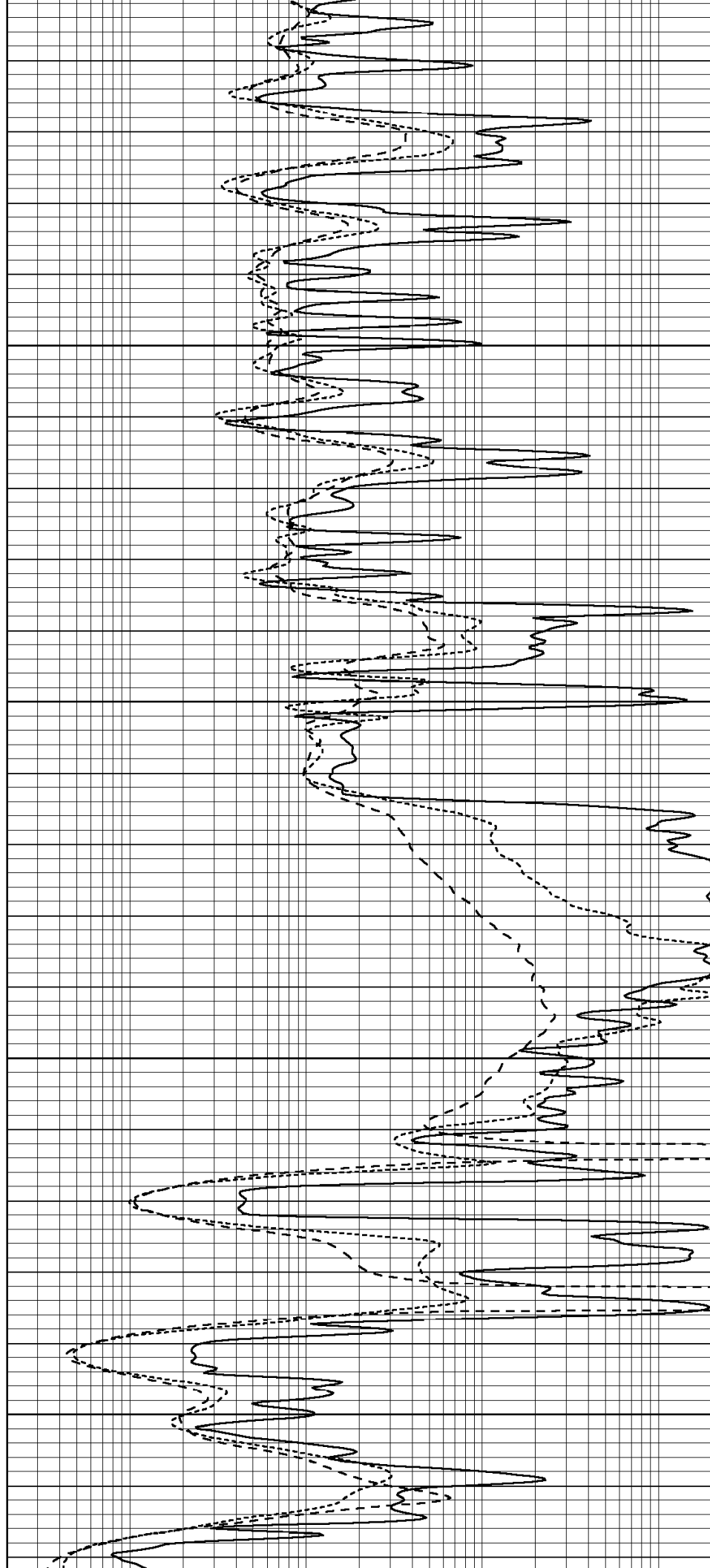


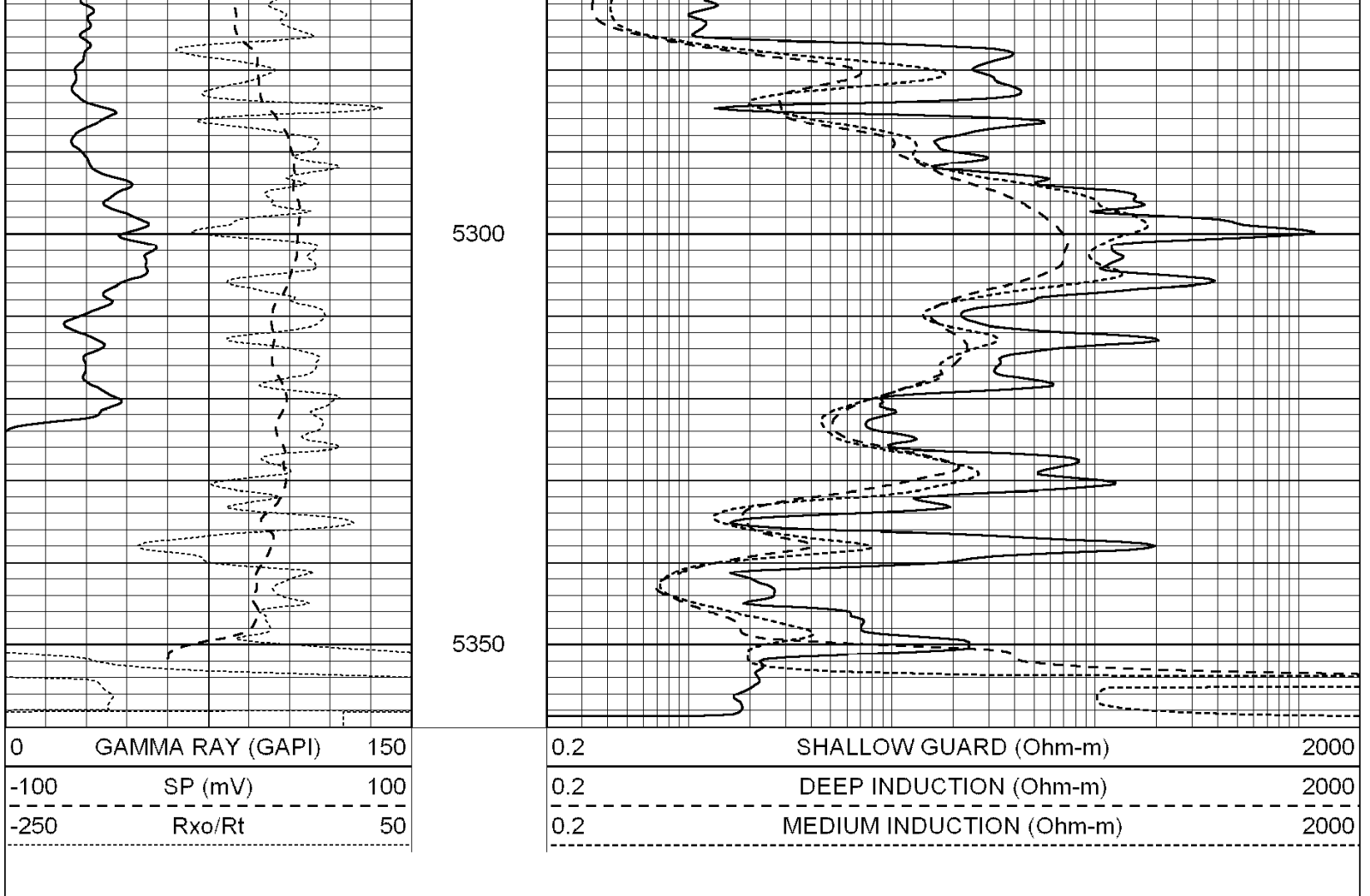
5100

5150

5200

5250





Calibration Report

Database File: 004371pe.db
 Dataset Pathname: pass3.8
 Dataset Creation: Sat Nov 14 15:24:06 2009 by Calc Open-Cased 060407

Dual Induction Calibration Report

Serial-Model: DIL6-GEAR
 Performed: Sat Nov 14 13:57:50 2009

Loop:	Readings				References			Results	
	Air	Loop			Air	Loop		m	b
Deep	0.001	0.644	V	0.000	400.000	mmho-m	660.000	0.000	
Medium	0.020	0.738	V	0.000	462.500	mmho-m	740.000	-23.000	
Internal:	Zero	Cal		Zero	Cal		m	b	
Deep	0.000	1.000	V	0.000	1.000	mmho-m	1.000	0.000	
Medium	0.000	1.000	V	0.000	1.000	mmho-m	1.000	0.000	

Litho Density Calibration Report

Serial: 004N Model: PRB
 Performed Tue Sep 08 13:49:55 2009

Litho Density Calibration

	Background	Magnesium	Aluminum	Sandstone	
Window 1	1535.8	11161.3	3721.6	12498.8	cps
Window 2	1402.6	9435.7	3219.7	10417.7	cps
Window 3	1275.2	8112.2	2775.2	8750.2	

Window 3	1077.6	4422.0	1779.2	4753.4	cps
Window 4	337.3	342.8	337.4	343.7	cps
Long Space	0.0	8033.1	1817.0	9015.1	cps
Short Space	1.2	1671.8	1138.1	1813.0	cps
Rho		1.7100	2.5900	1.3800	g/cc
Pe			2.5700	1.5500	

Rib Angle	: 45.5	Rib Slope	: 1.017	Density/Spine Ratio	: 0.573
Spine Angle	: 75.5	Spine Slope	: 3.865	Spine Intercept	: -19.7

Caliper			
Low Ref	Readings	Reference	
High Ref	1.1	6.6	
	3.0	14.0	
	Gain: 3.9		Offset: 2.4

Compensated Neutron Calibration Report

Serial Number:	NEU_4I
Tool Model:	G

CALIBRATION

Detector	Readings	Target	Normalization
Short Space	996.00 cps	1000.00 cps	1.0000
Long Space	977.00 cps	1000.00 cps	1.0000

Gamma Ray Calibration Report

Serial Number:	GR4
Tool Model:	OPEN
Performed:	Sat Nov 14 13:57:30 2009
Calibrator Value:	200.0 GAPI
Background Reading:	0.0 cps
Calibrator Reading:	189.0 cps
Sensitivity:	0.7000 GAPI/cps