



Microresistivity Log

DIGITAL LOG (785) 625-3858

API No.	15-063-21,739-00-00		
Company	H & M Petroleum Corporation		
Well	Bonita Springs No. 4		
Field	Bonita Springs		
County	Gove	State	Kansas
Location	2180' FNL & 1370' FWL		
Sec: 13	Twp: 12 S	Rge: 31 W	Other Services CNL/CDL DIL/BHCS
Permanent Datum	Ground Level	Elevation 2911	Elevation
Log Measured From	Kelly Bushing	5 Ft. Above Perm. Datum	K.B. 2916
Drilling Measured From	Kelly Bushing		D.F. 2911
			G.L. 2911

Date	11/06/2008
Run Number	Two
Depth Driller	4650
Depth Logger	4650
Bottom Logged Interval	4649
Top Log Interval	3600
Casing Driller	8.625 @ 220
Casing Logger	219
Bit Size	7.875
Type Fluid in Hole	Chemical
Salinity, ppm CL	2,400
Density / Viscosity	9.4 50
pH / Fluid Loss	11.0 8.0
Source of Sample	Flowline
Rm @ Meas. Temp	3.0 @ 65
Rmf @ Meas. Temp	2.25 @ 65
Rmc @ Meas. Temp	4.05 @ 65
Source of Rmf / Rmc	Charts
Rm @ BHT	1.57 @ 125
Operating Rig Time	4 Hours
Max Rec. Temp. F	125
Equipment Number	10
Location	Hays
Recorded By	B. Reiners
Witnessed By	Rick Hall
	Jason Wellbrock
	Peter Debenham

<<< Fold Here >>>

All interpretations are opinions based on inferences from electrical or other measurements and we cannot and do not guarantee the accuracy or correctness of any interpretation, and we shall not, except in the case of gross or willful negligence on our part, be liable or responsible for any loss, costs, damages, or expenses incurred or sustained by anyone resulting from any interpretation made by any of our officers, agents or employees. These interpretations are also subject to our general terms and conditions set out in our current Price Schedule.

Comments

Thank you for using Log-Tech, Inc.
 (785) 625-3858

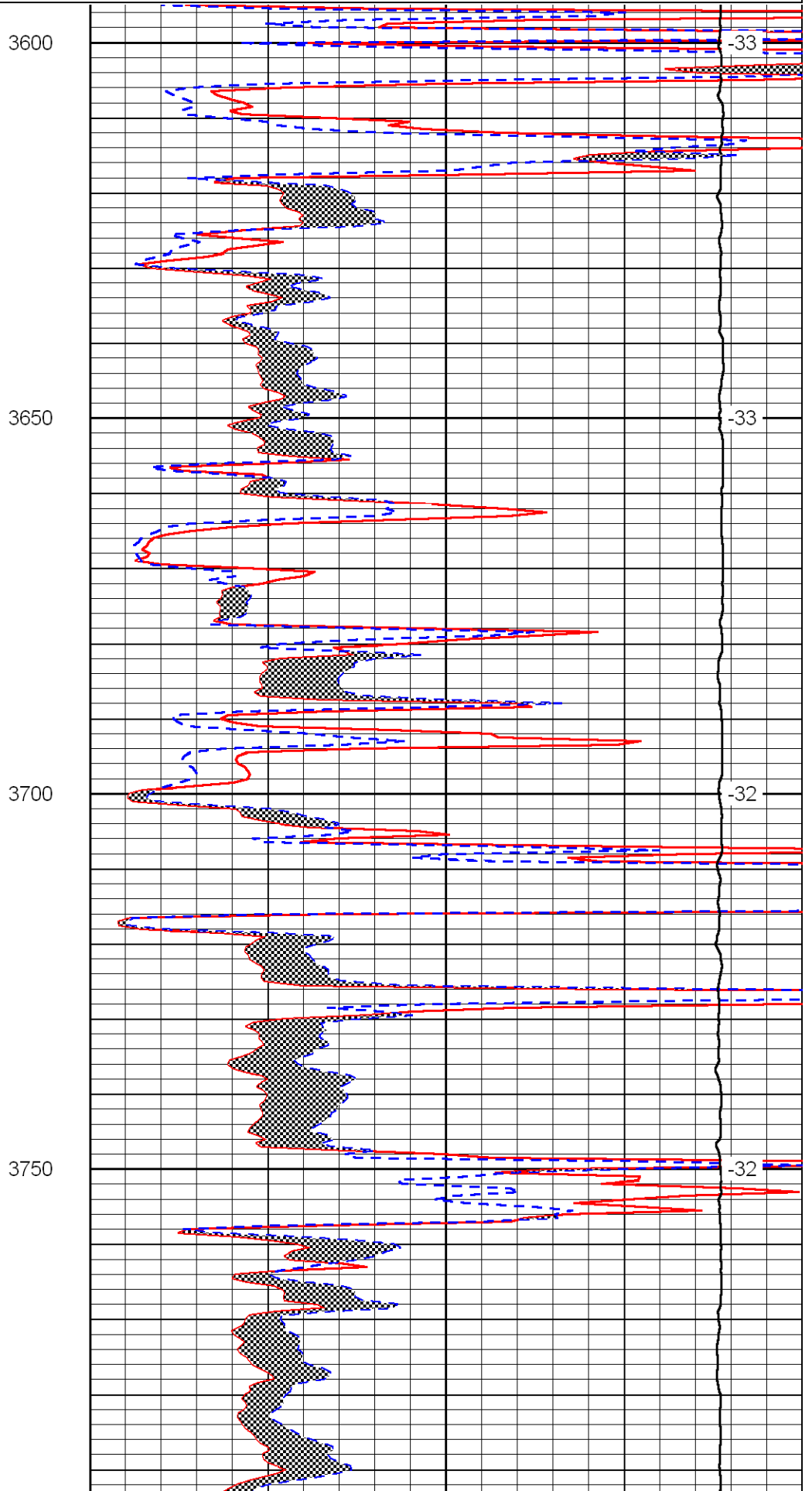
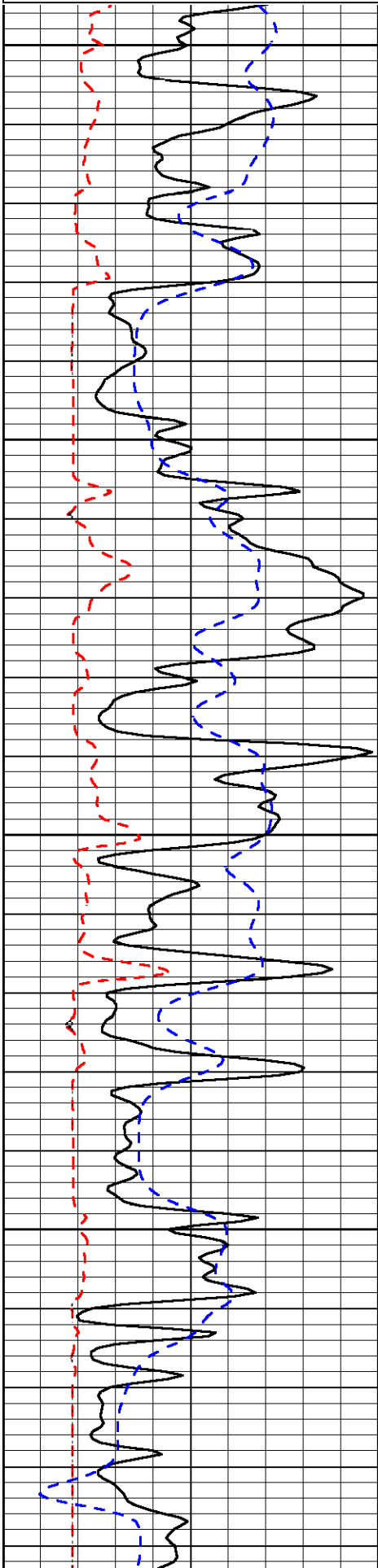
 I 70, Campus Rd.
 S 8 1/2, E 1/2,
 S 1/2, E Into

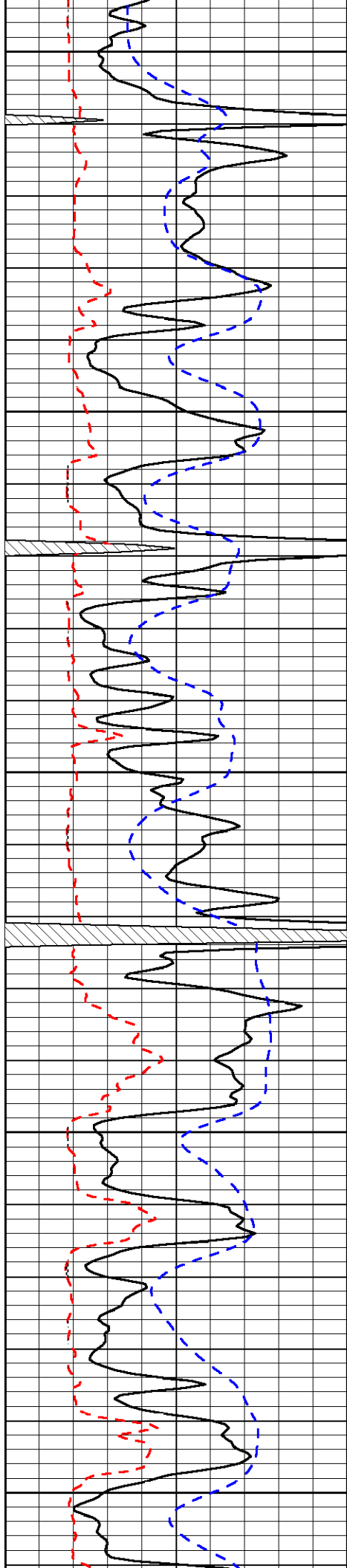
Database File: c:\warrior\data\h&m_bonita springs no. 4\h&mhd.db
 Dataset Pathname: dil/h&m2in
 Presentation Format: micro
 Dataset Creation: Thu Nov 06 05:51:04 2008
 Charted by: Depth in Feet scaled 1:240

0	Gamma Ray	150
6	Micro Log Caliper (GAPI)	16
-200	SP	0

0	Micro Inverse 1 X 1	40
0	Micro Normal 2"	40
10000	Line Weight	0

LSPD





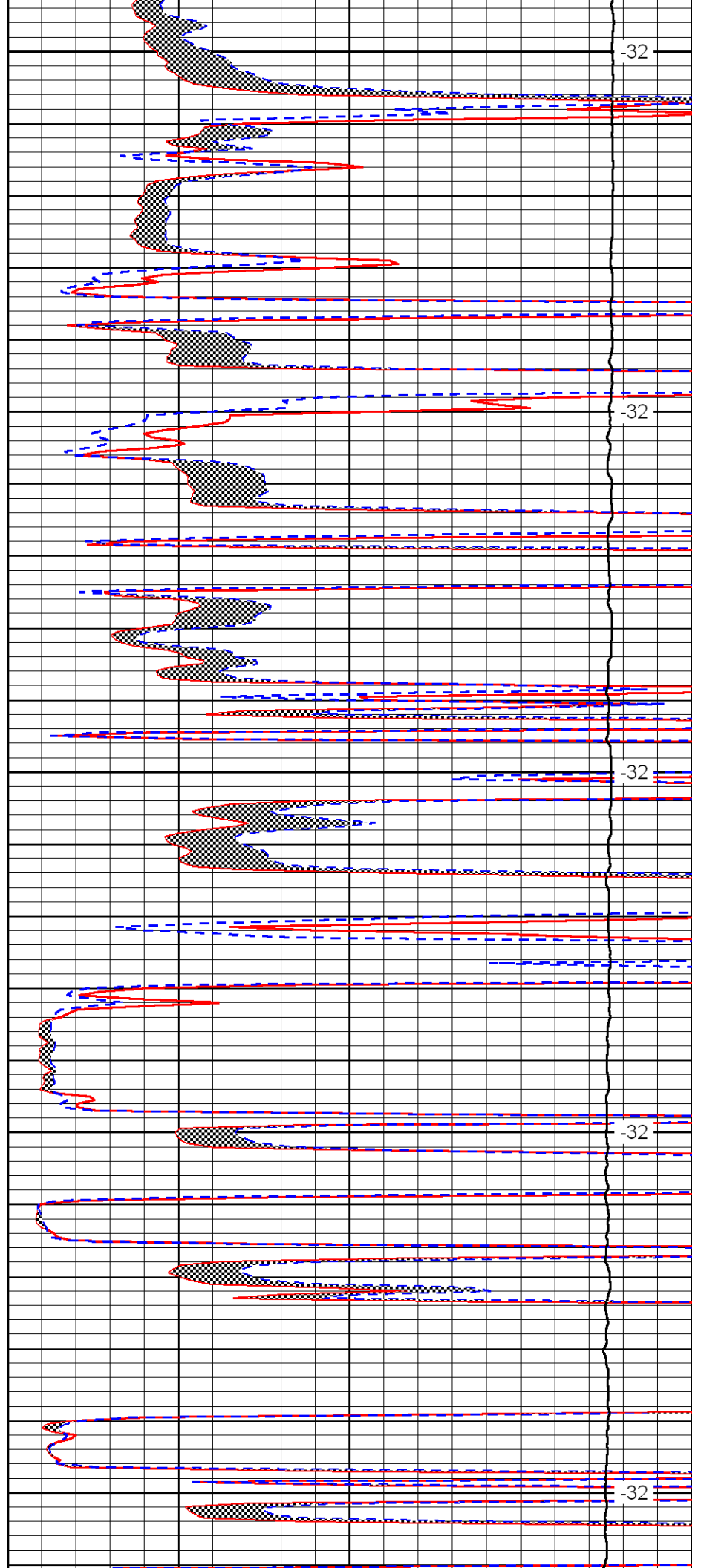
3800

3850

3900

3950

4000



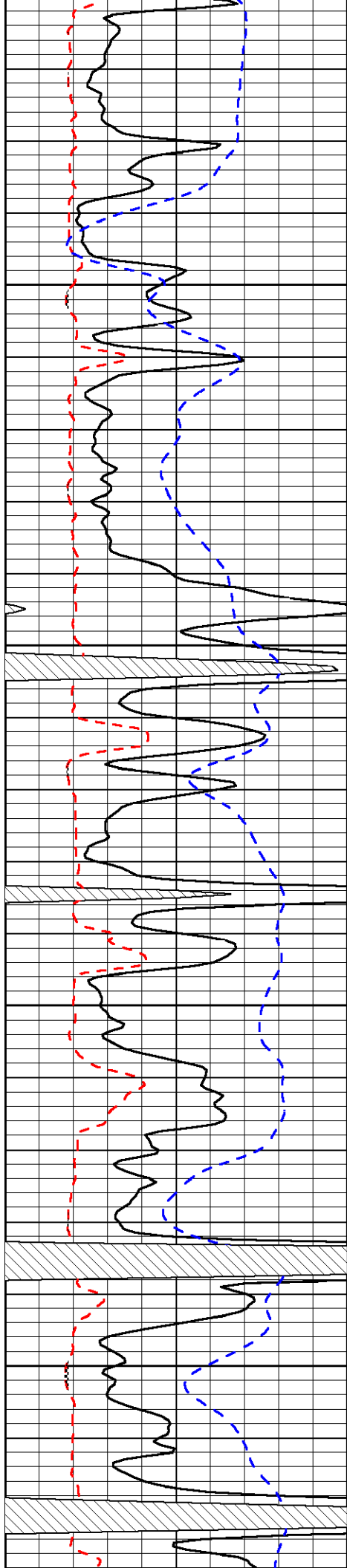
-32

-32

-32

-32

-32

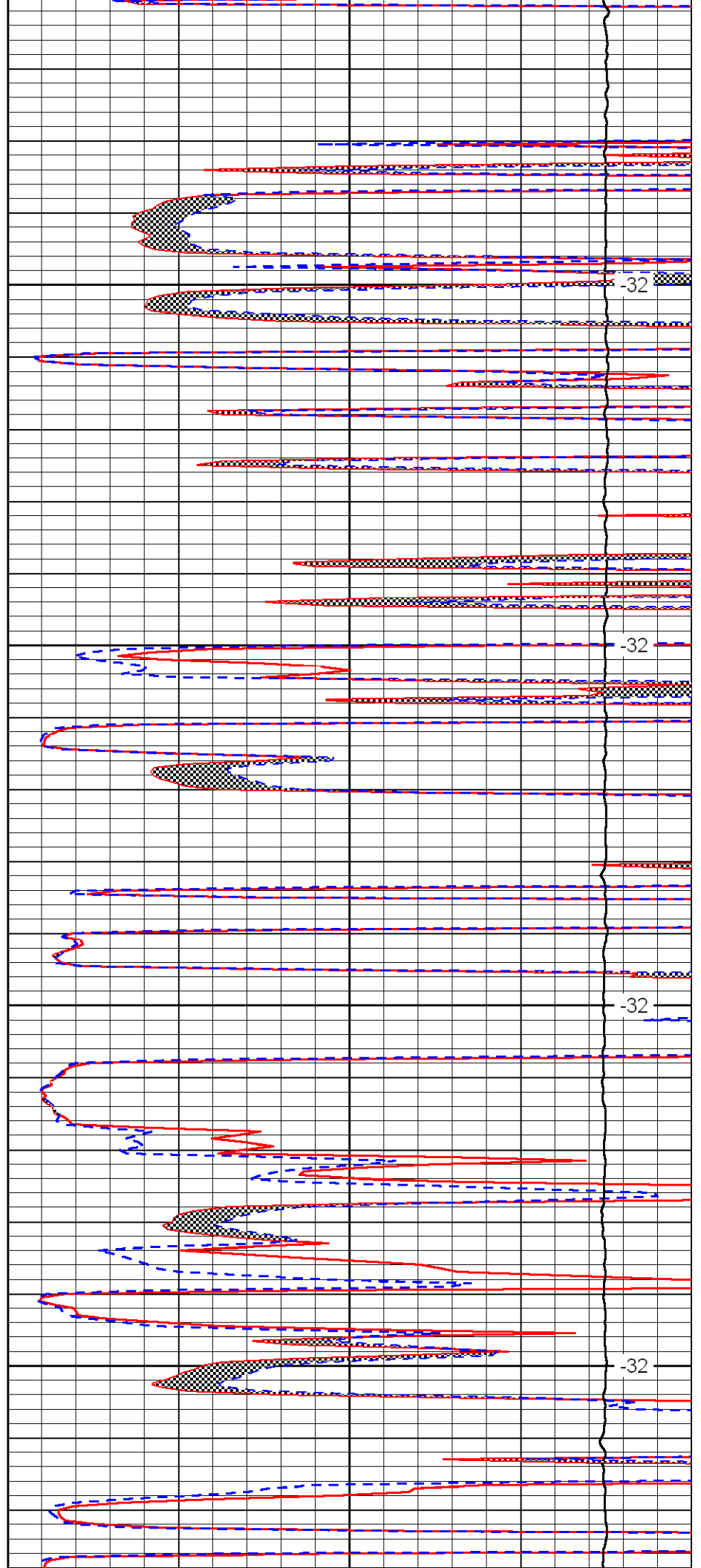


4050

4100

4150

4200

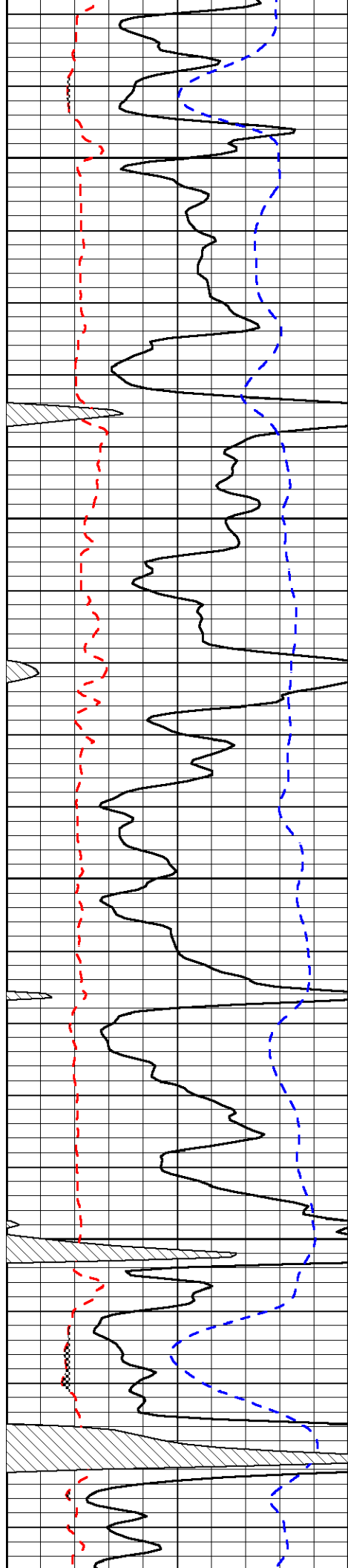


-32

-32

-32

-32

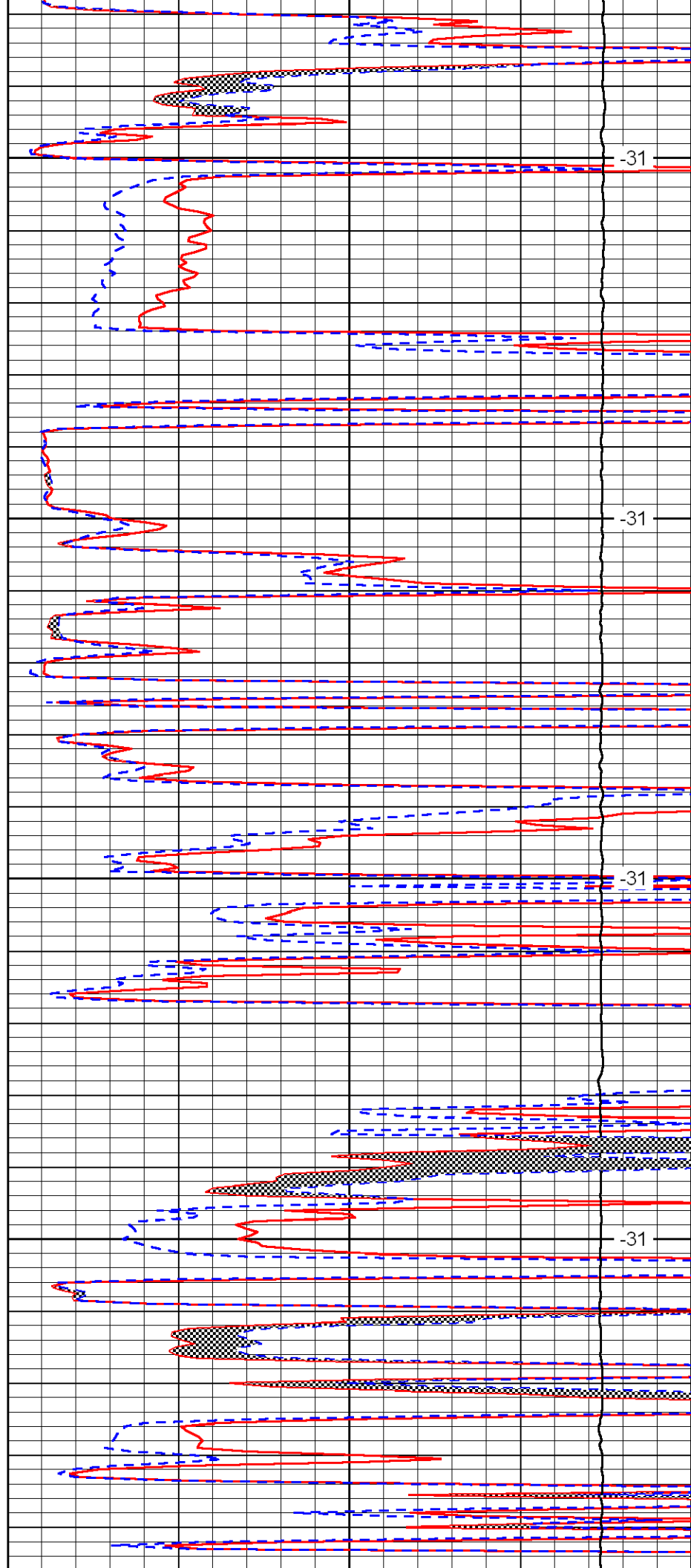


4250

4300

4350

4400

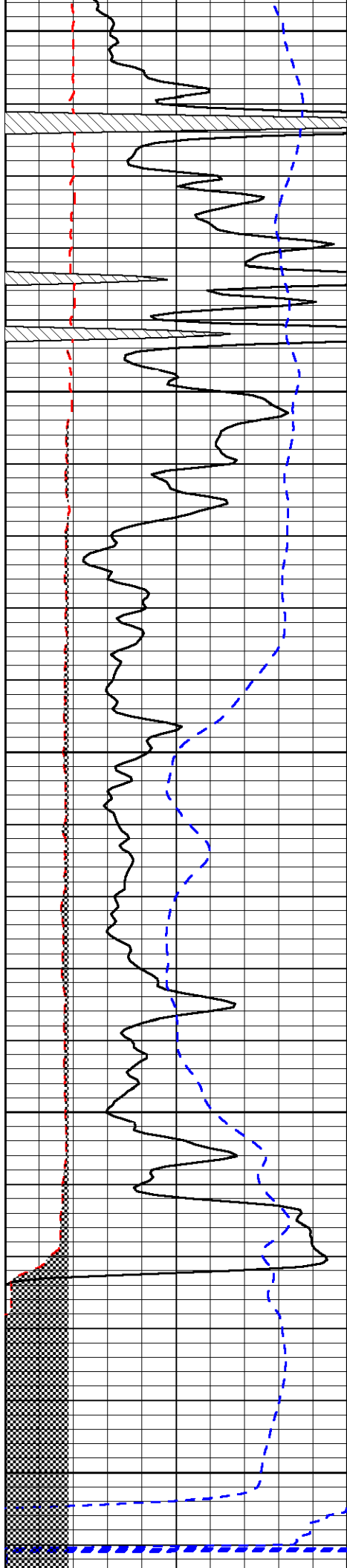


-31

-31

-31

-31



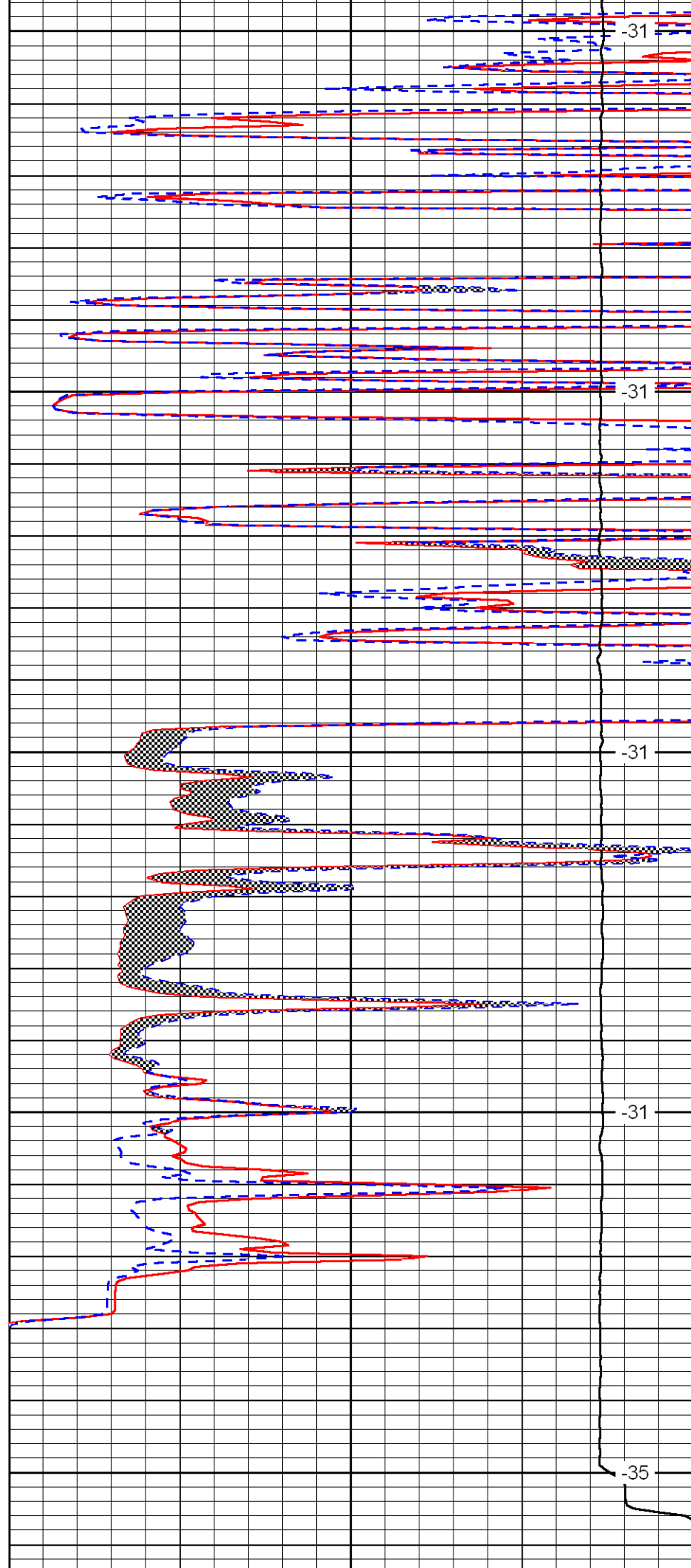
4450

4500

4550

4600

4650



-31

-31

-31

-31

-35

0	Gamma Ray	150
6	Micro Log Caliper (GAPI)	16
-200	SP	0

0	Micro Inverse 1 X 1	40
0	Micro Normal 2"	40
10000	Line Weight	0

LSPD