



Radiation Guard Log

DIGITAL LOG (785) 625-3858

API No.	API 15-179-21,229-00-00		
Company	A & A Production		
Well	Simon No. 2		
Field	Wildcat		
County	Sheridan	State	Kansas
Location	NE SE SE SW 550' FSL & 2,610' FWL		
Sec: 16	Twp: 9S	Rge: 26W	Other Services MEL
Permanent Datum	Ground Level	Elevation 2665	Elevation
Log Measured From	Kelly Bushing	5 Ft. Above Perm. Datum	K.B. 2670
Drilling Measured From	Froth Kelly Bushing		D.F. 2665
			G.L. 2665

Date	5/20/2009	
Run Number	One	
Depth Driller	4140	
Depth Logger	4136	
Bottom Logged Interval	4135	
Top Log Interval	250	
Casing Driller	8.625 @ 273	
Casing Logger	270	
Bit Size	7.875	
Type Fluid in Hole	Chemical	
Salinity, ppm CL	2000	
Density / Viscosity	9.3	58
pH / Fluid Loss	11.0	9.2
Source of Sample	Flowline	
Rm @ Meas. Temp	.92 @ 76	
Rmf @ Meas. Temp	.69 @ 76	
Rmc @ Meas. Temp	1.24 @ 76	
Source of Rmf / Rmc	Charts	
Rm @ BHT	.59 @ 119	
Operating Rig Time	3 Hours	
Max Rec. Temp. F	119	
Equipment Number	17	
Location	Hays	
Recorded By	J. Long	
Witnessed By	Herb Deines	
	M. Garrison	

<<< Fold Here >>>

All interpretations are opinions based on inferences from electrical or other measurements and we cannot and do not guarantee the accuracy or correctness of any interpretation, and we shall not, except in the case of gross or willful negligence on our part, be liable or responsible for any loss, costs, damages, or expenses incurred or sustained by anyone resulting from any interpretation made by any of our officers, agents or employees. These interpretations are also subject to our general terms and conditions set out in our current Price Schedule.

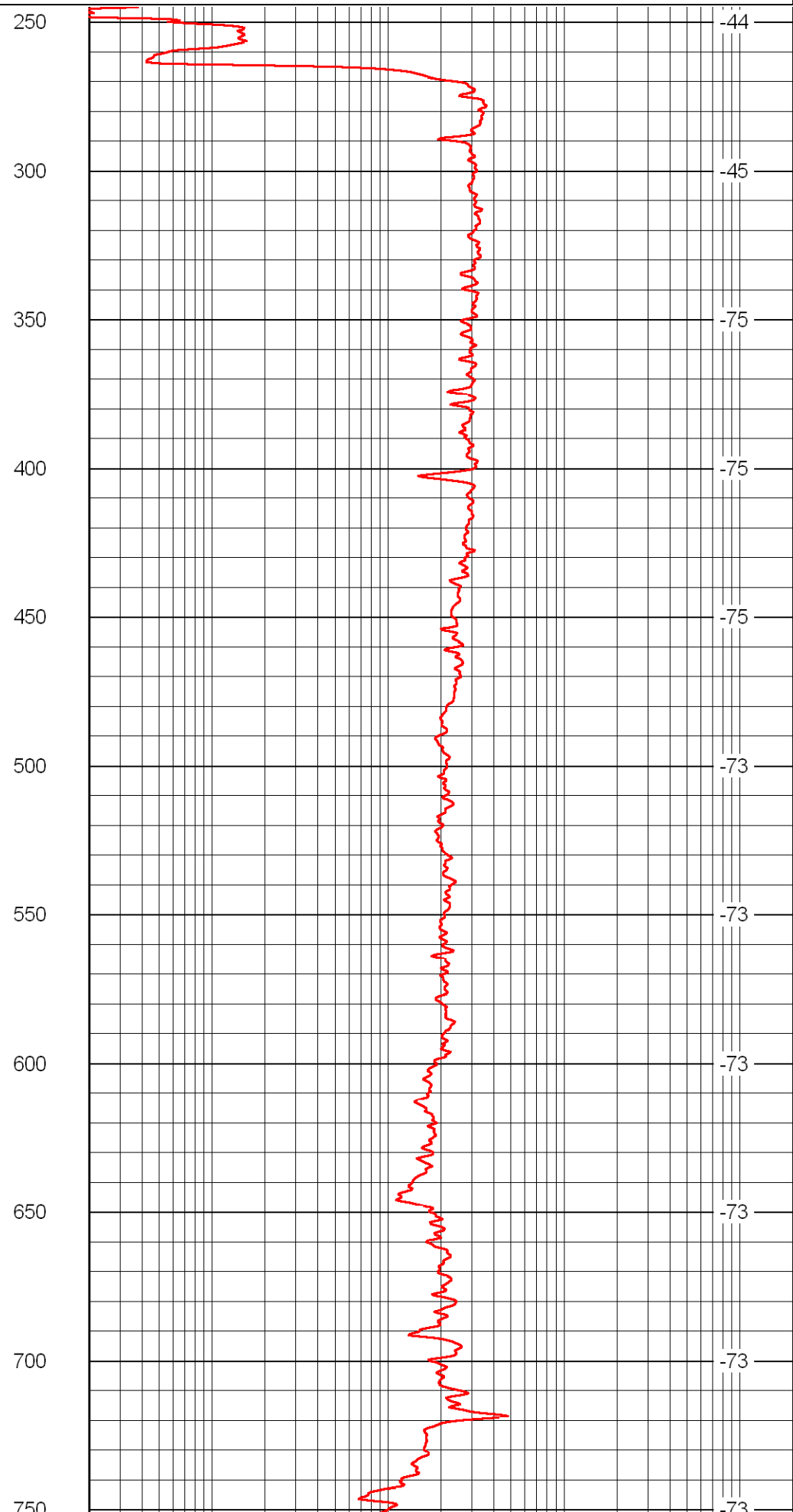
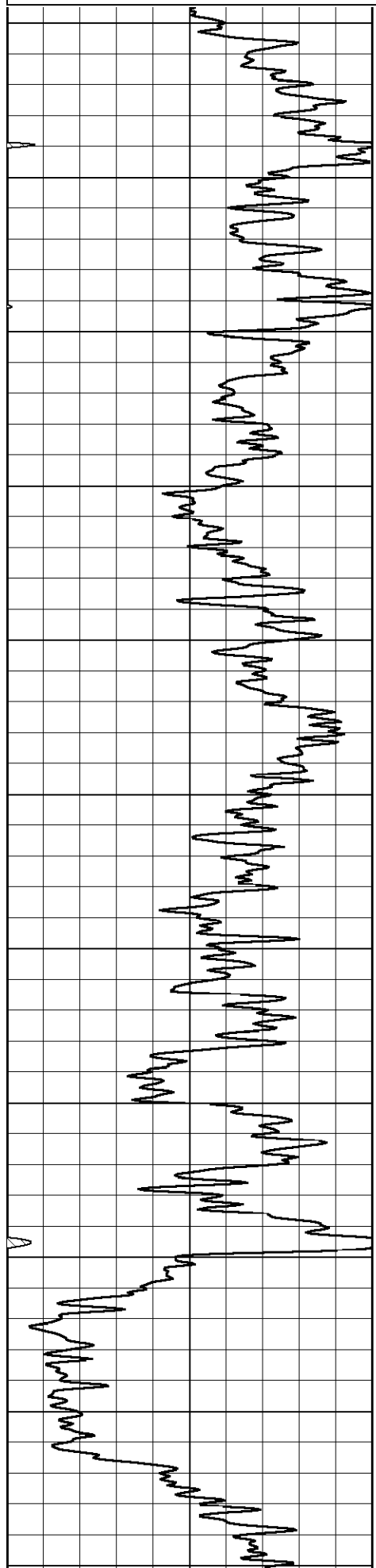
Comments

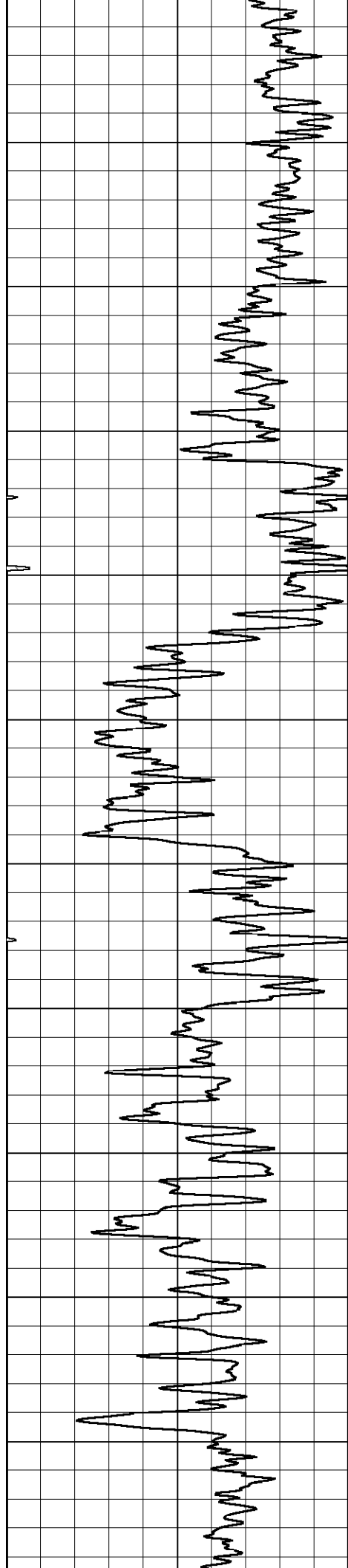
Thank you for using Log-Tech, Inc.
(785) 625-3858

Quinter, N to Highway 40, 3 E, 14 N to stop sign, 2 1/2 W, N Into

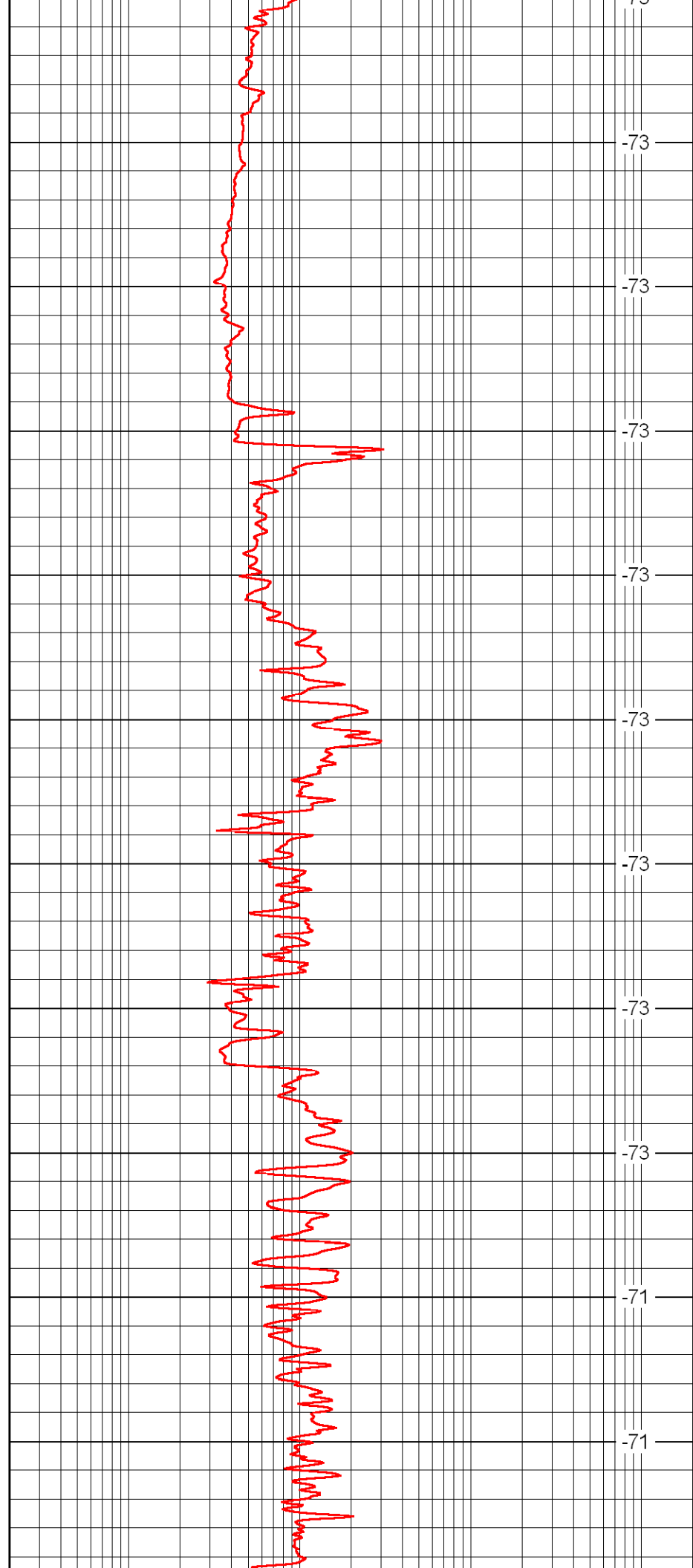
Database File: c:\warrior\data\aa production_simon no. 2\aa&ahd.db
 Dataset Pathname: rag/aarag
 Presentation Format: rag2in
 Dataset Creation: Fri May 22 12:09:01 2009
 Charted by: Depth in Feet scaled 1:600

LSPD
(ft/min)

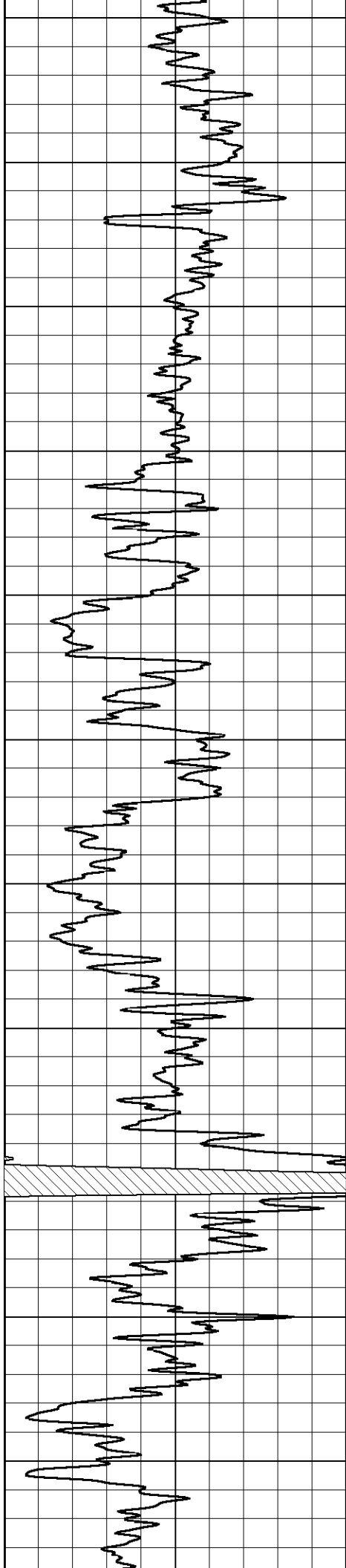




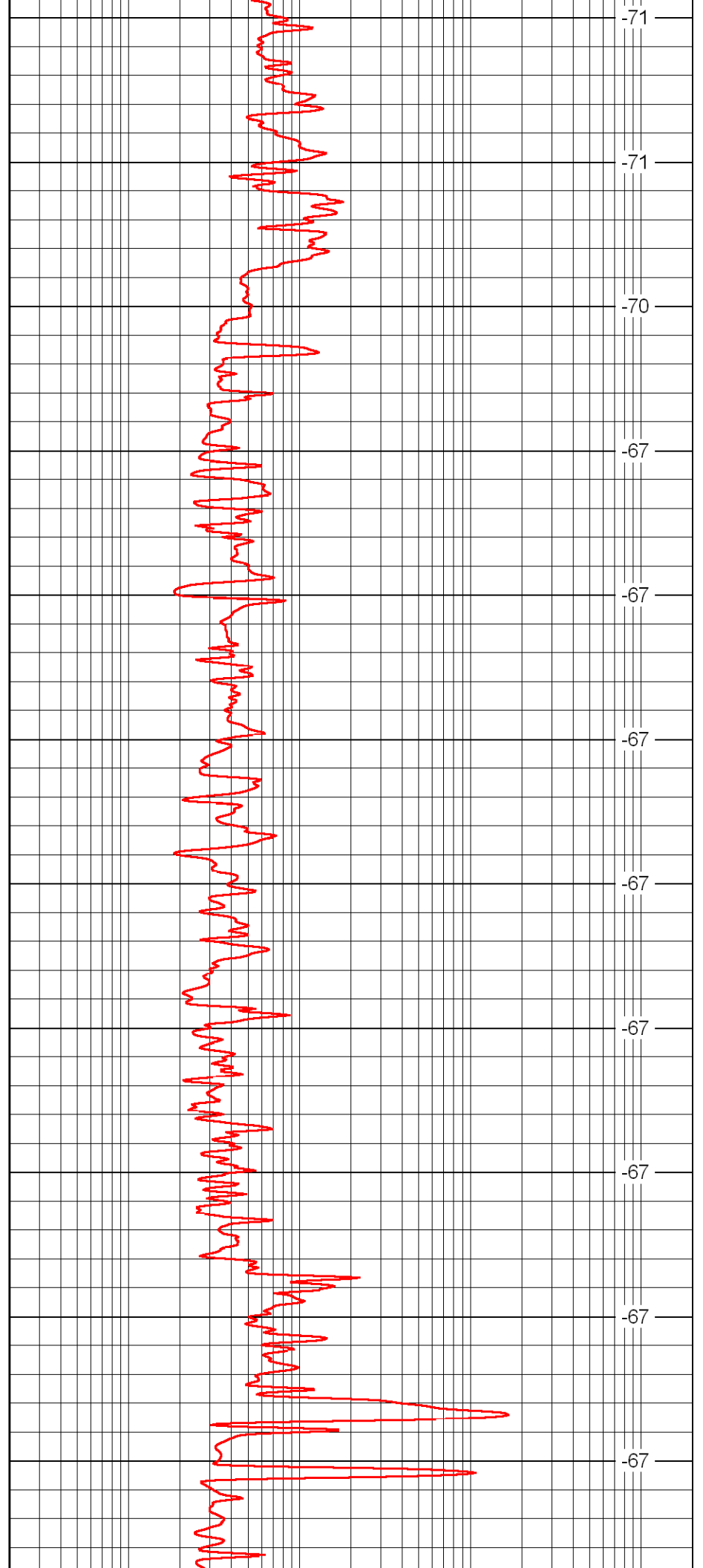
750
800
850
900
950
1000
1050
1100
1150
1200
1250



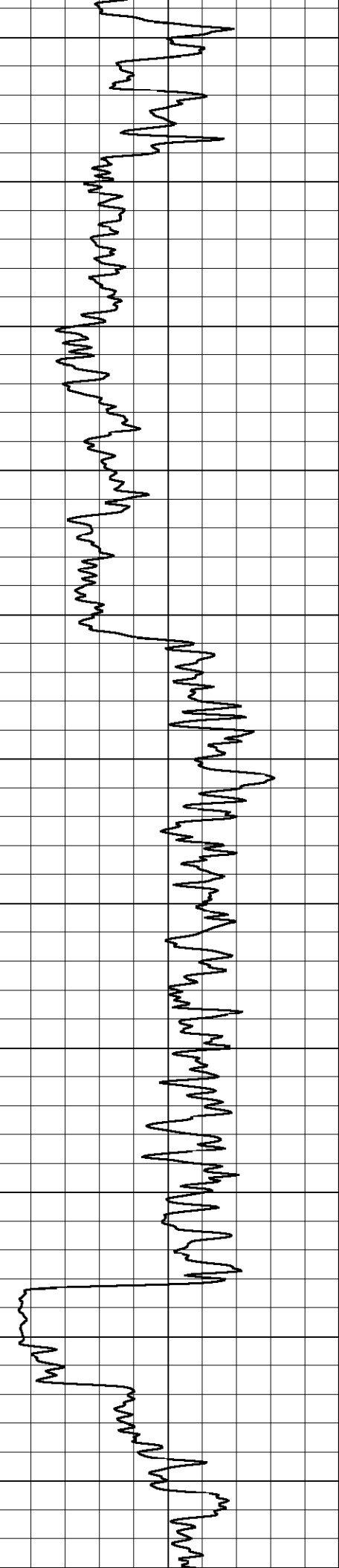
-75
-73
-73
-73
-73
-73
-73
-73
-71
-71



1300
1350
1400
1450
1500
1550
1600
1650
1700
1750
1800



-71
-71
-70
-67
-67
-67
-67
-67
-67
-67
-67
-67



1850

1900

1950

2000

2050

2100

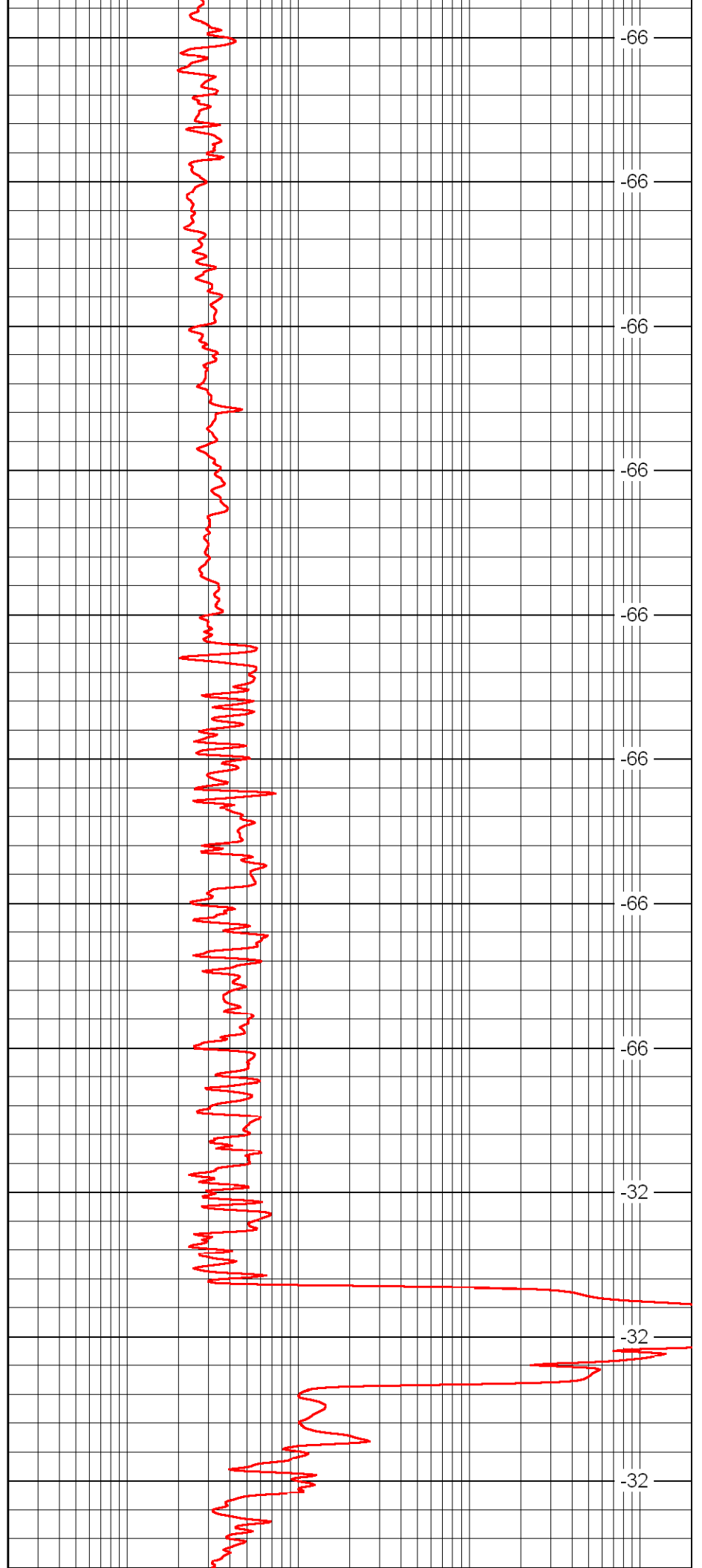
2150

2200

2250

2300

2350



-66

-66

-66

-66

-66

-66

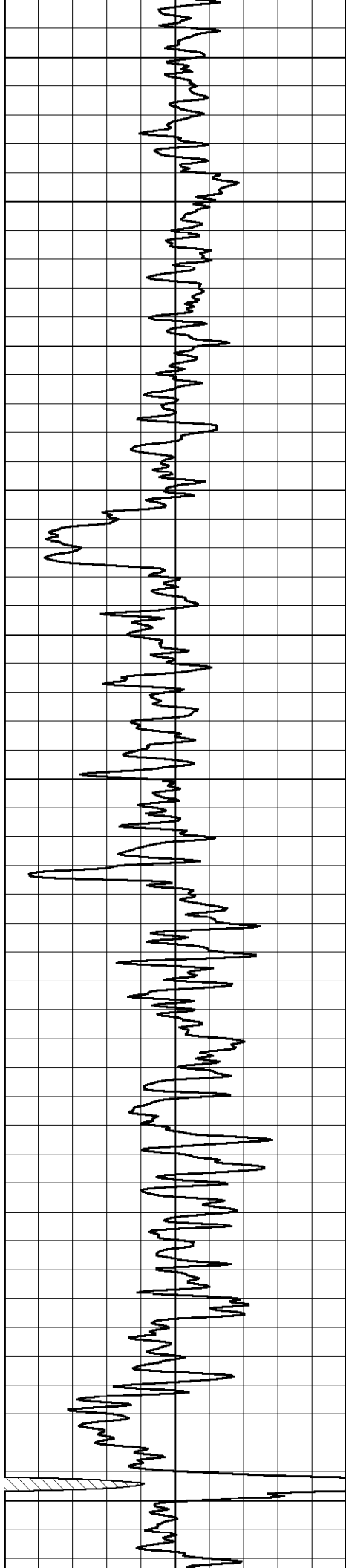
-66

-66

-32

-32

-32



2400

2450

2500

2550

2600

2650

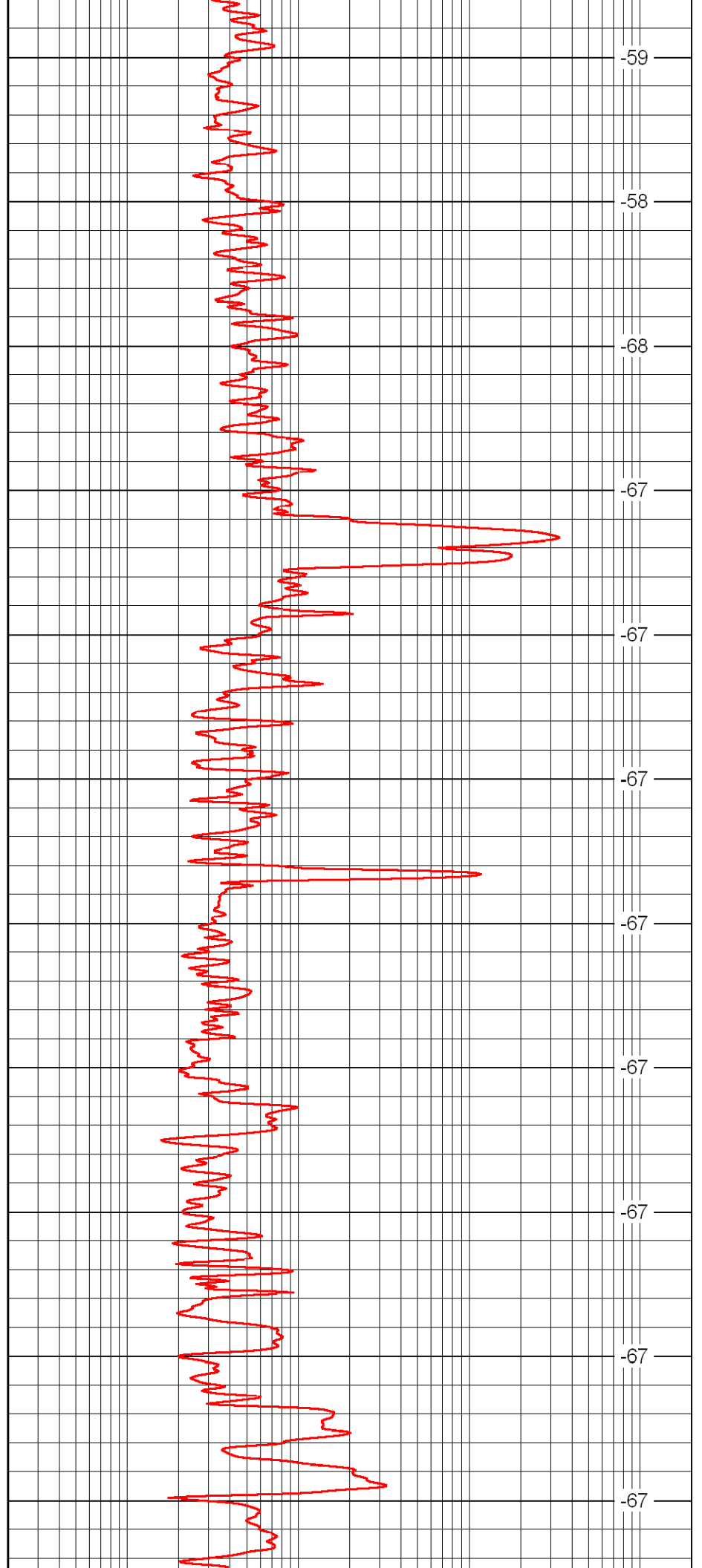
2700

2750

2800

2850

2900



-59

-58

-68

-67

-67

-67

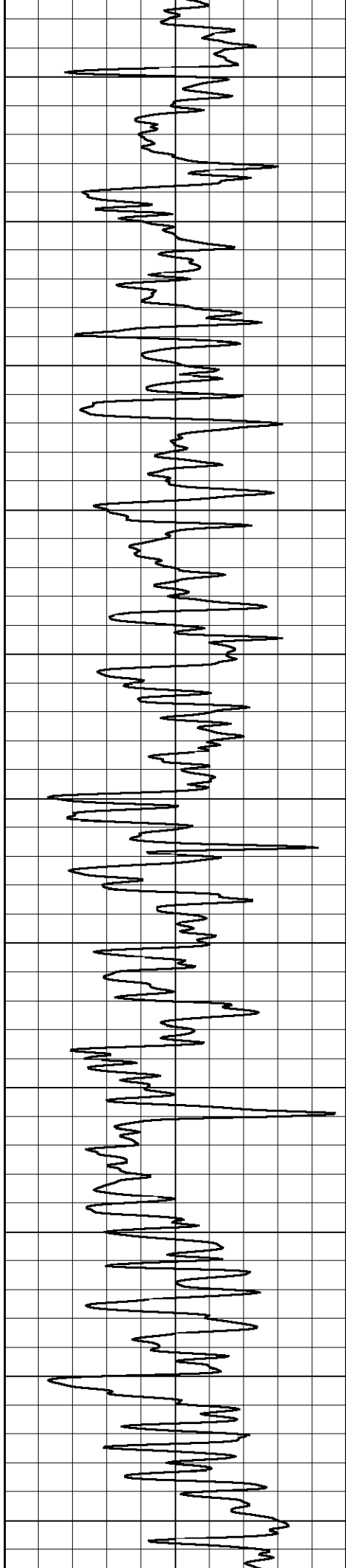
-67

-67

-67

-67

-67



2950

3000

3050

3100

3150

3200

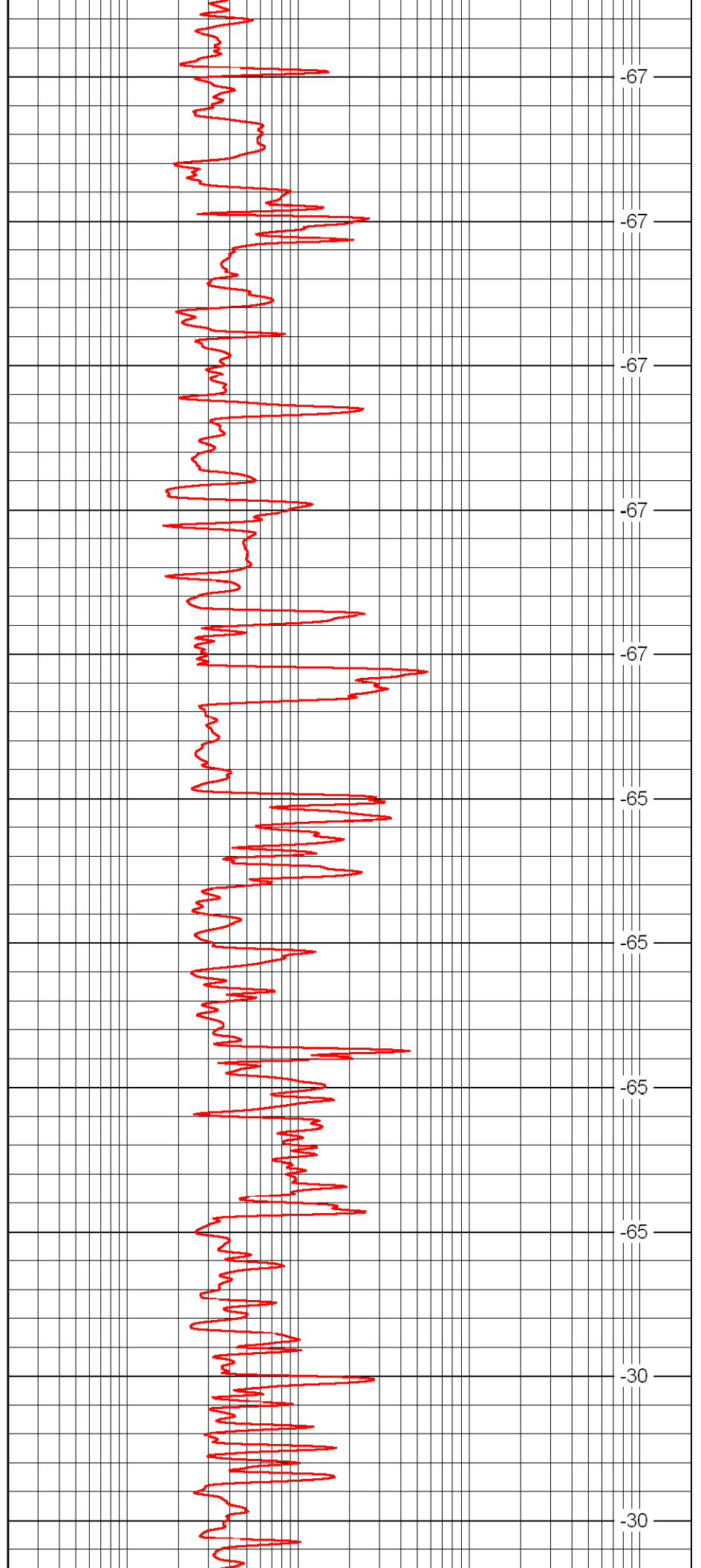
3250

3300

3350

3400

3450



-67

-67

-67

-67

-67

-65

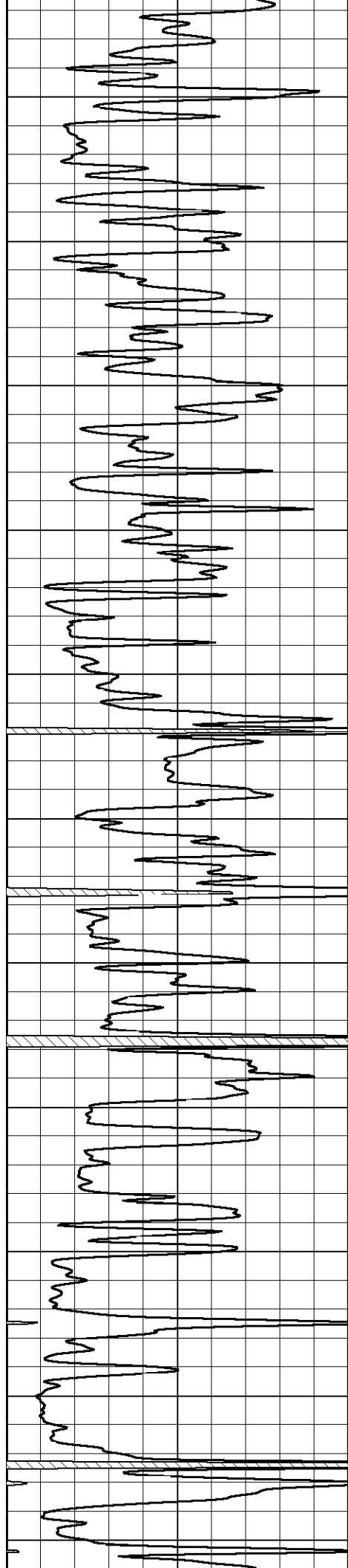
-65

-65

-65

-30

-30



3500

3550

3600

3650

3700

3750

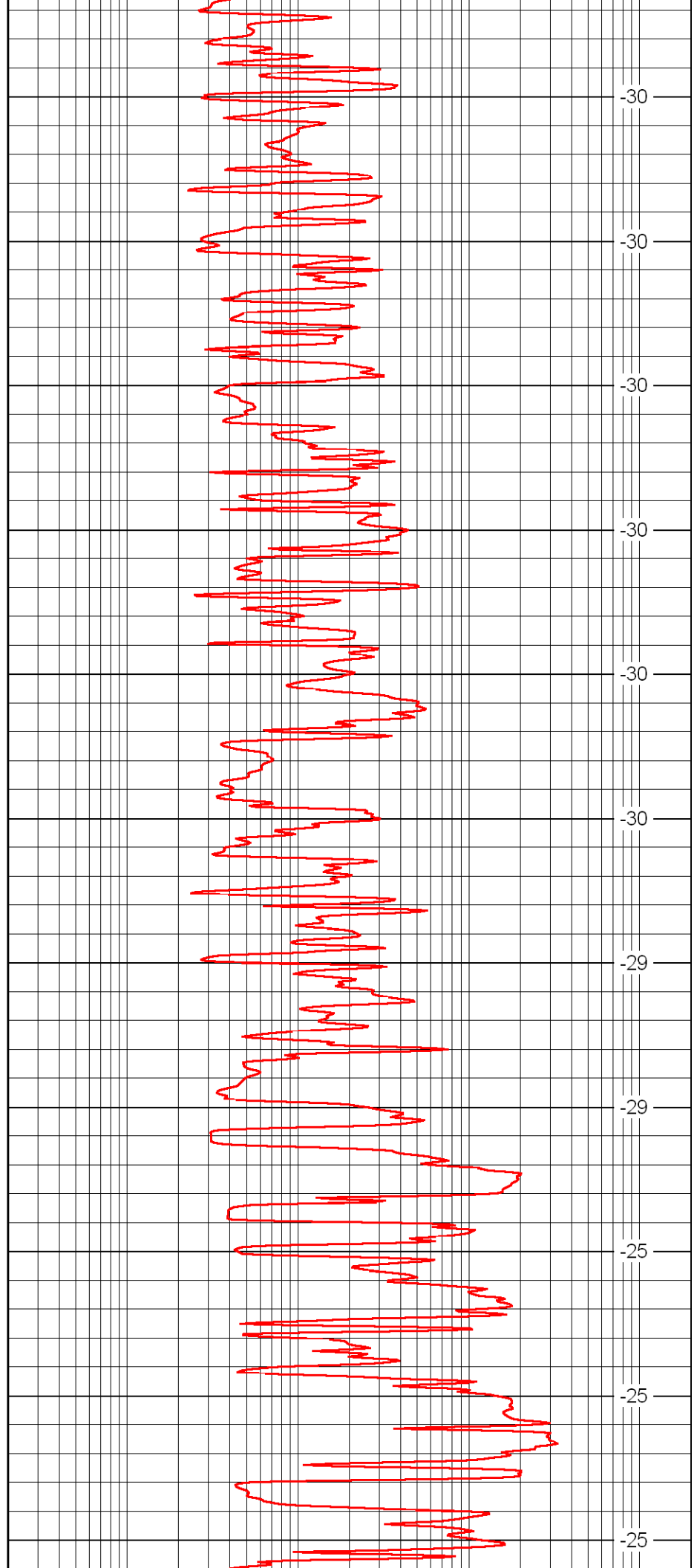
3800

3850

3900

3950

4000



-30

-30

-30

-30

-30

-30

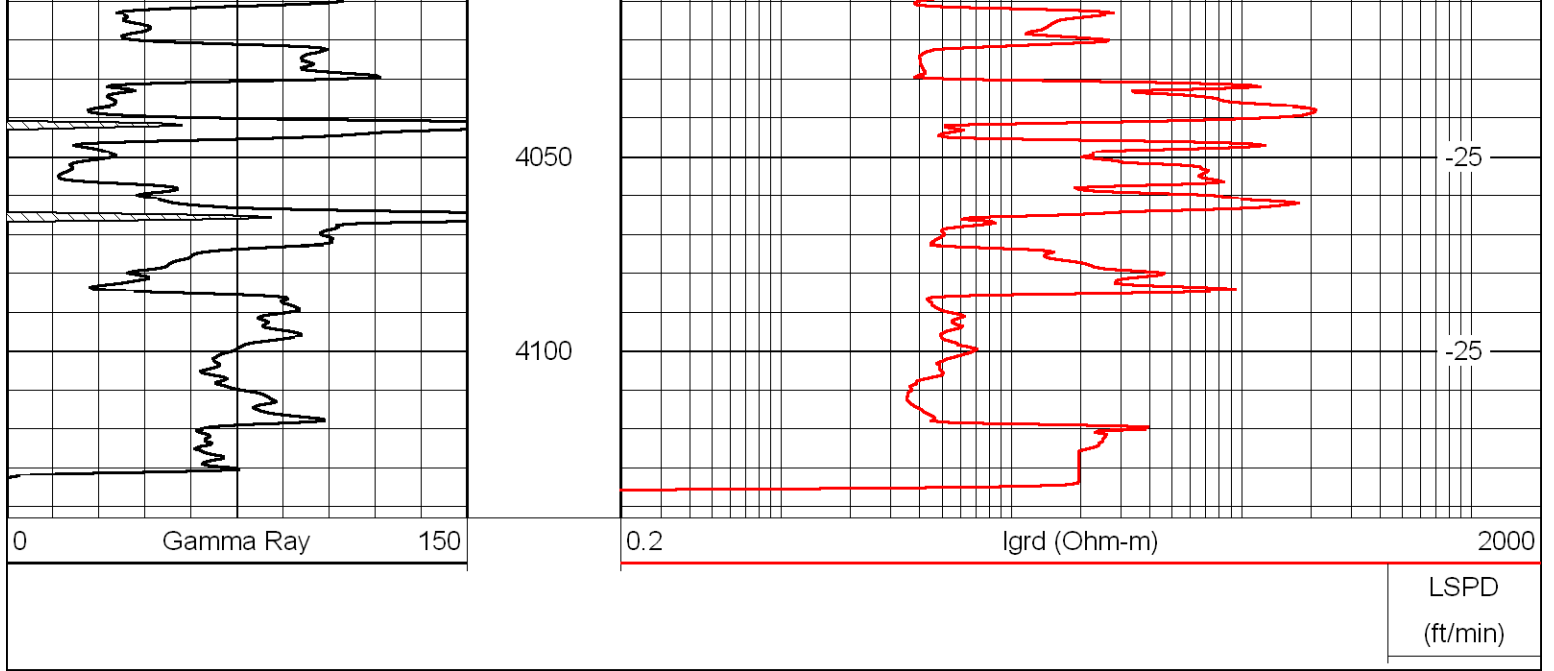
-29

-29

-25

-25

-25



Database File: c:\warrior\data\aa production_simon no. 2\aa&ahd.db
 Dataset Pathname: rag/aarag
 Presentation Format: rag
 Dataset Creation: Fri May 22 12:09:01 2009
 Charted by: Depth in Feet scaled 1:240

