



**SUPERIOR**  
Hays,  
Kansas

**MICRO**  
LOG

Company	DREILING OIL, INC.	Company	DREILING OIL, INC.
Well	SCHULTZE #1	Well	SCHULTZE #1
Field		Field	
County	OSBORNE	County	OSBORNE
State	KANSAS	State	KANSAS
Location:	API #: 15-141-20401 1850' FSL & 2980' FEL E/2 - NE - SW	Other Services	CDL/CNL SONIC/DIL
Permanent Datum	GROUND LEVEL	Elevation	1705
Log Measured From	KELLY BUSHING 8' A.G.L.	K.B.	1713
Drilling Measured From	KELLY BUSHING	D.F.	
		G.L.	1705
	SEC 28 TWP 8S RGE 13W		

Date	4-17-09
Run Number	TWO
Depth Driller	3760
Depth Logger	3760
Bottom Logged Interval	3742
Top Log Interval	1500
Casing Driller	222
Casing Logger	NA
Bit Size	7.875
Type Fluid in Hole	CHEMICAL MUD
Density / Viscosity	9.3 / 48
pH / Fluid Loss	10.0 / 8.0
Source of Sample	FLOWLINE
Rim @ Meas. Temp	0.85 @ 84F
Rmf @ Meas. Temp	0.64 @ 84F
Rmc @ Meas. Temp	1.02 @ 84F
Source of Rmf / Rmc	MEASURED
Rm @ BHT	.640 @ 112F
Time Circulation Stopped	2 HOURS
Time Logger on Bottom	
Maximum Recorded Temperature	112F
Equipment Number	0860
Location	HAYS, KS.
Recorded By	RUPP
Witnessed By	BILL REE

<<< Fold Here >>>

All interpretations are opinions based on inferences from electrical or other measurements and we cannot and do not guarantee the accuracy or correctness of any interpretation, and we shall not, except in the case of gross or willful negligence on our part, be liable or responsible for any loss, costs, damages, or expenses incurred or sustained by anyone resulting from any interpretation made by any of our officers, agents or employees. These interpretations are also subject to our general terms and conditions set out in our current Price Schedule.

Comments

SUPERIOR WELL SERVICES  
 785-628-6395  
 THANK YOU FOR YOUR BUSINESS  
 DIRECTIONS: WALDO, 5N TO THE STOP SIGN, N TO COVERT, 2N & E TO CURVE, 1/2N, E INTO.

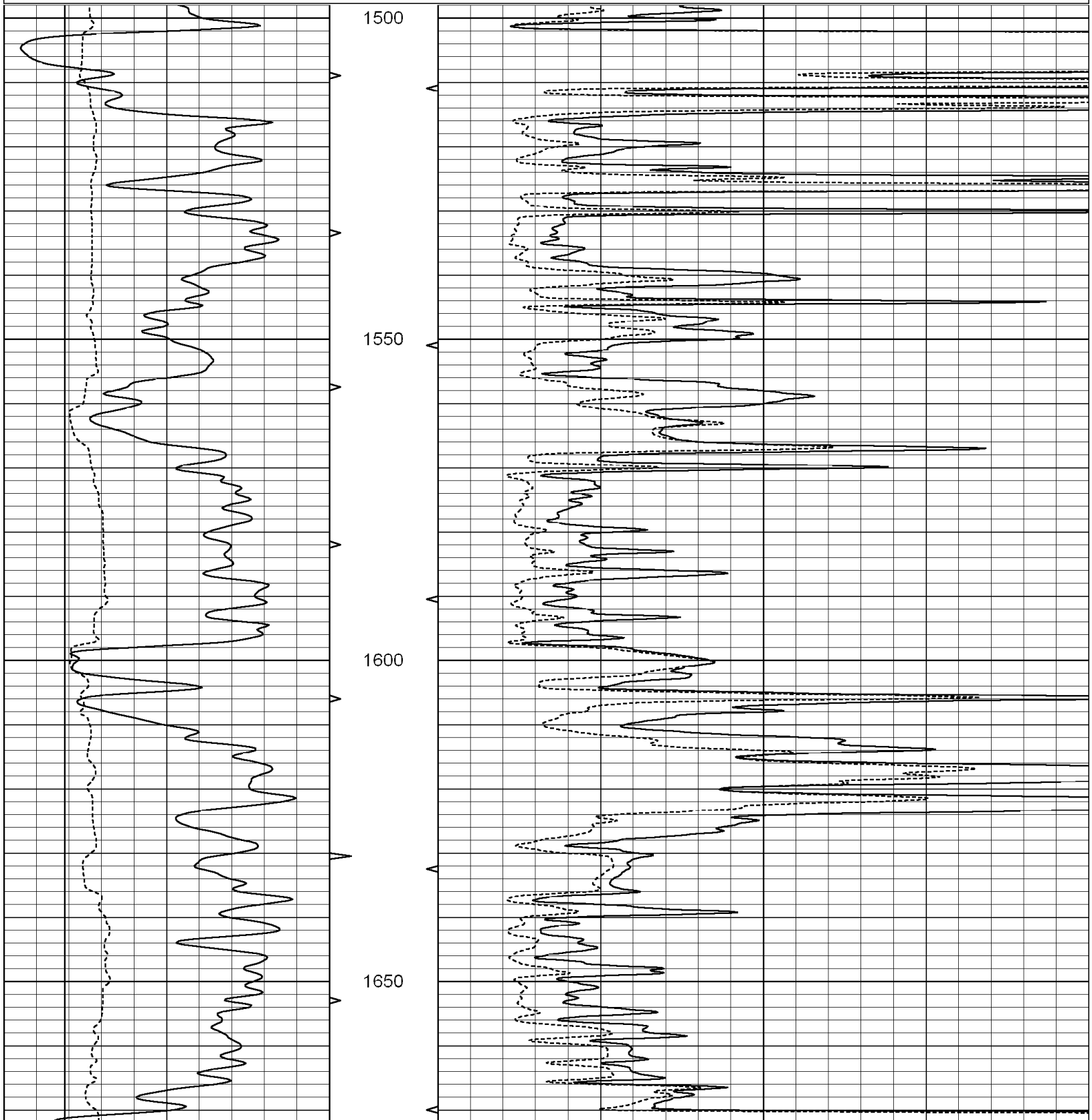


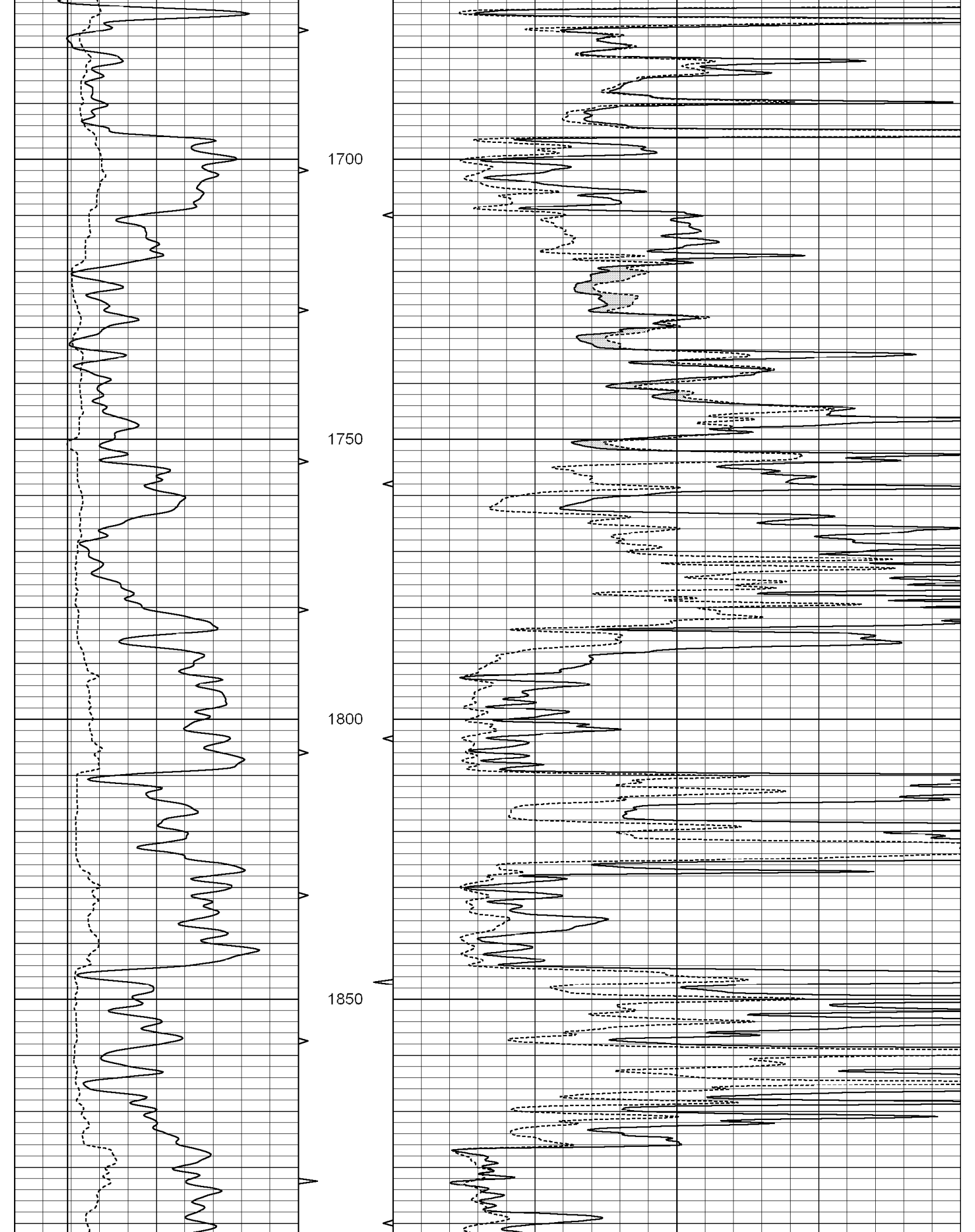
SUPERIOR  
Hays,  
Kansas

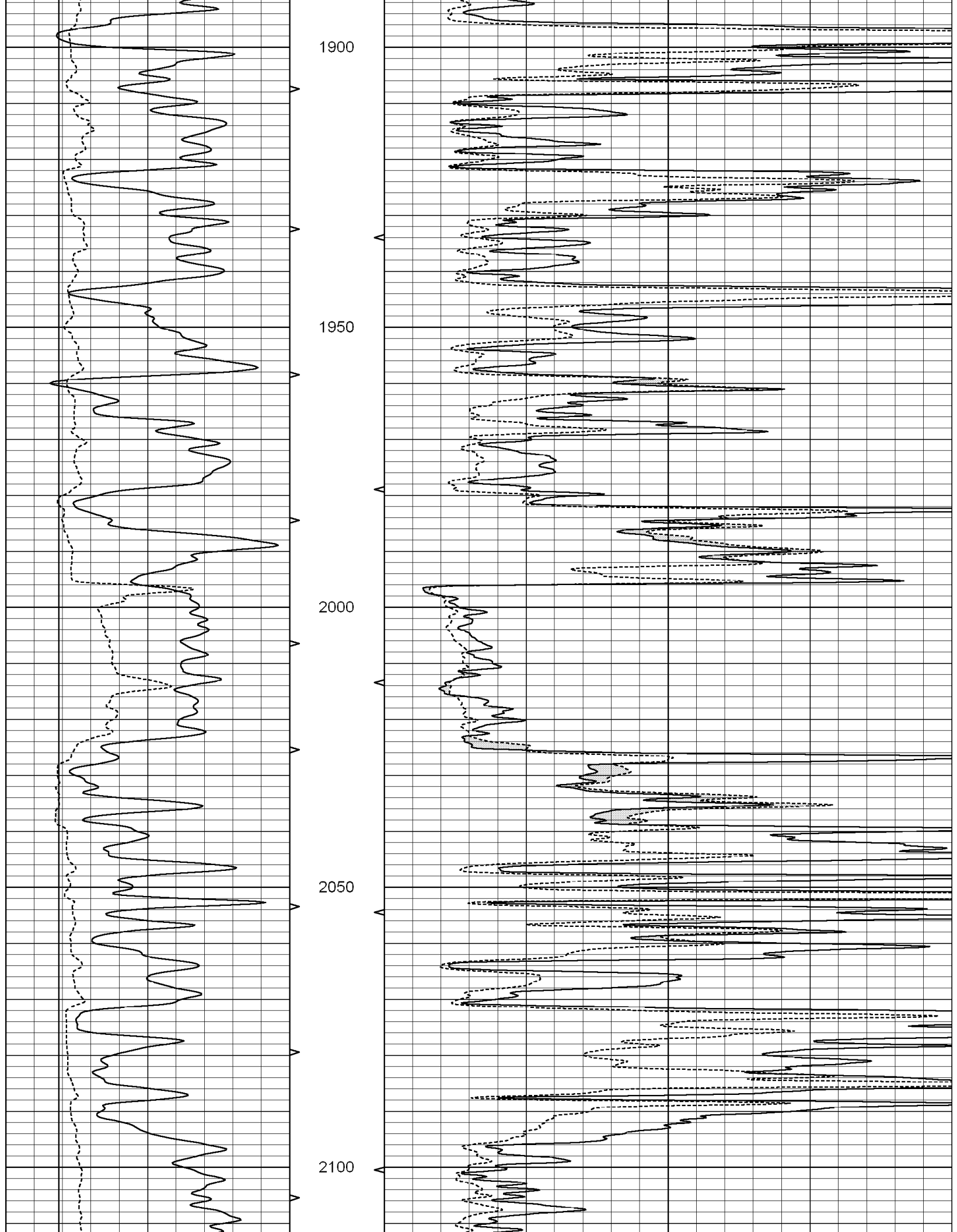
# MAIN SECTION

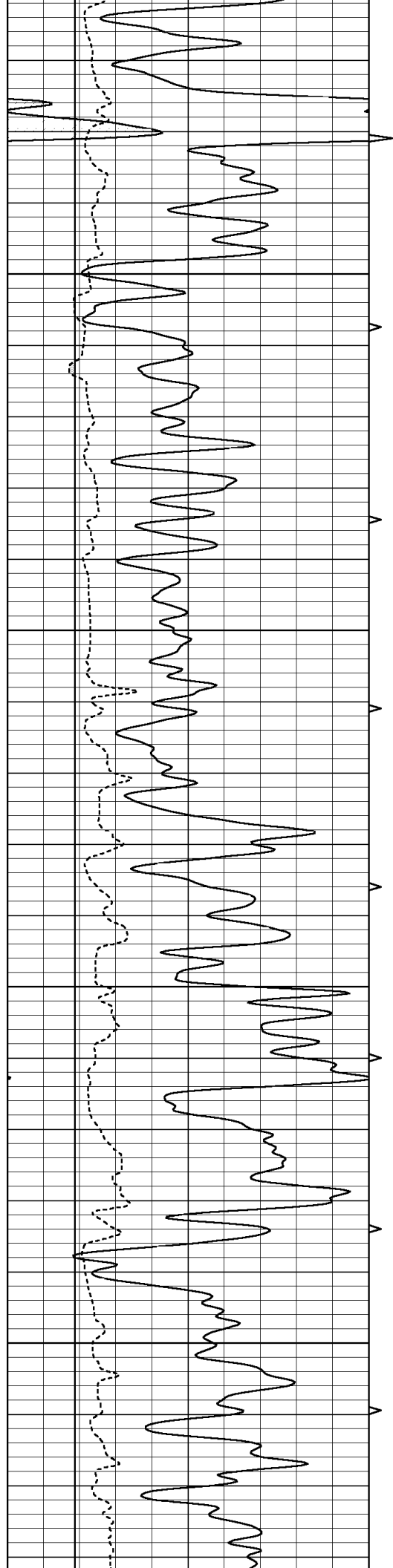
Database File: 003244ddn.db  
 Dataset Pathname: pass8.1A  
 Presentation Format: micro  
 Dataset Creation: Sat Apr 18 00:05:12 2009 by Calc Open-Cased 051020  
 Charted by: Depth in Feet scaled 1:240

0	GAMMA RAY (GAPI)	150	ABHV	0	MEL1.5 (Ohm-m)	20
6	CALIPER (in)	16	10 (ft3)	0	MEL2.0 (Ohm-m)	20
			TBHV			
			0 (ft3)	10		







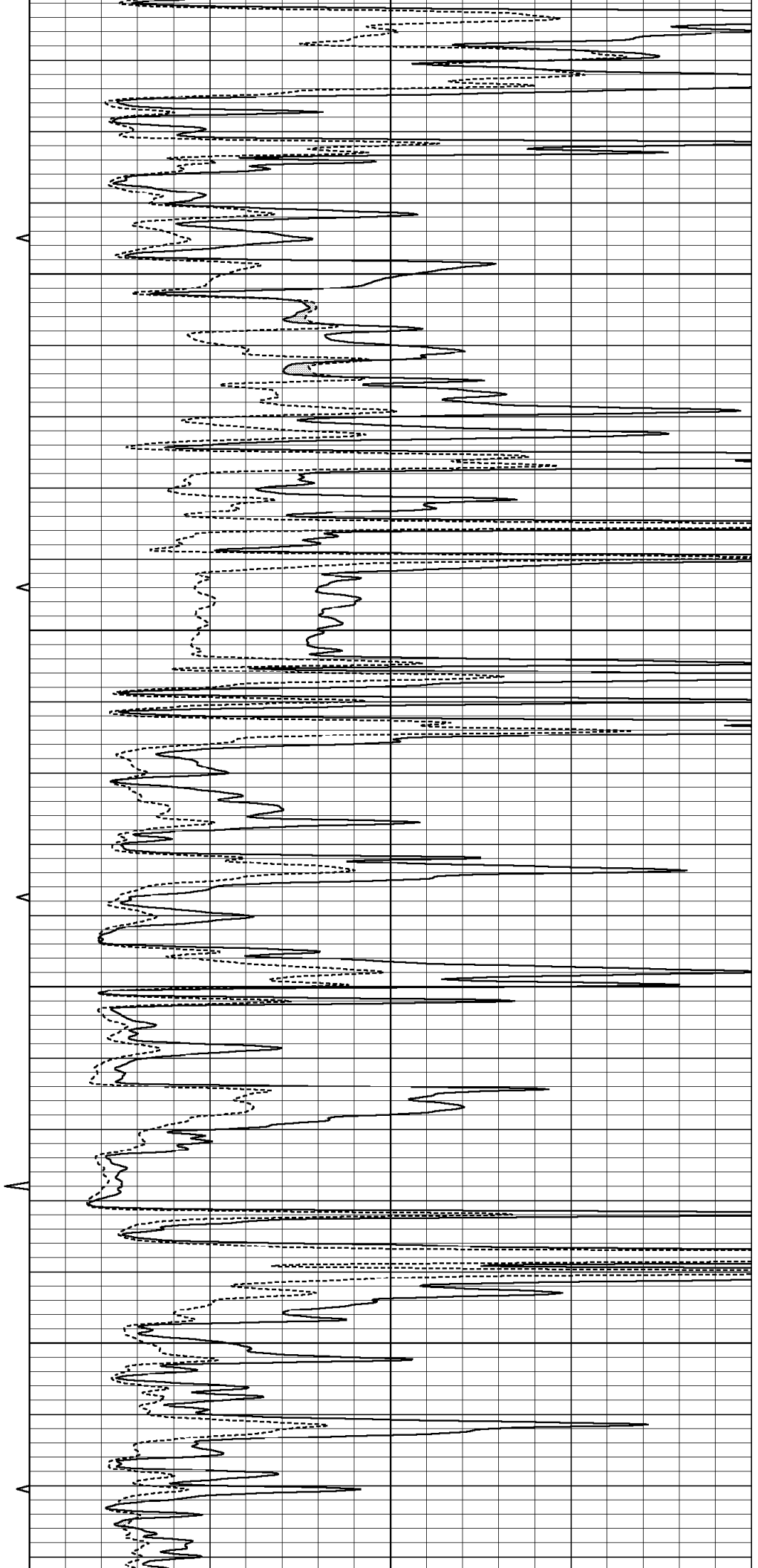


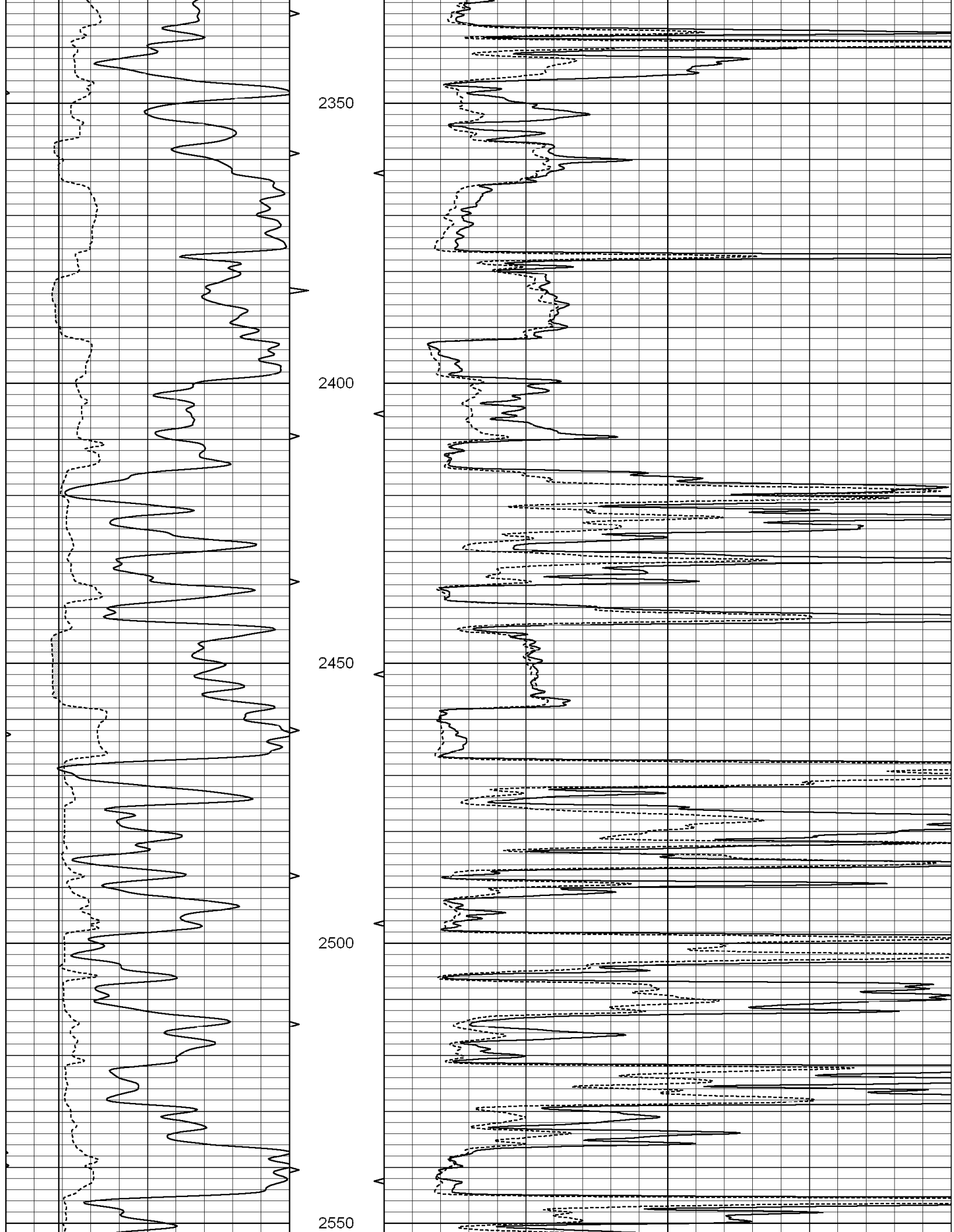
2150

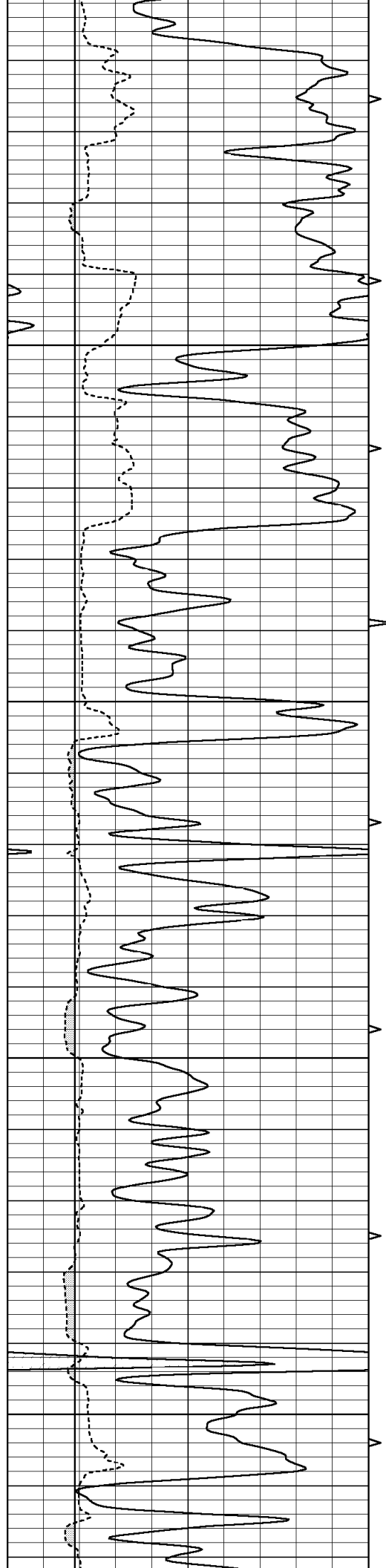
2200

2250

2300





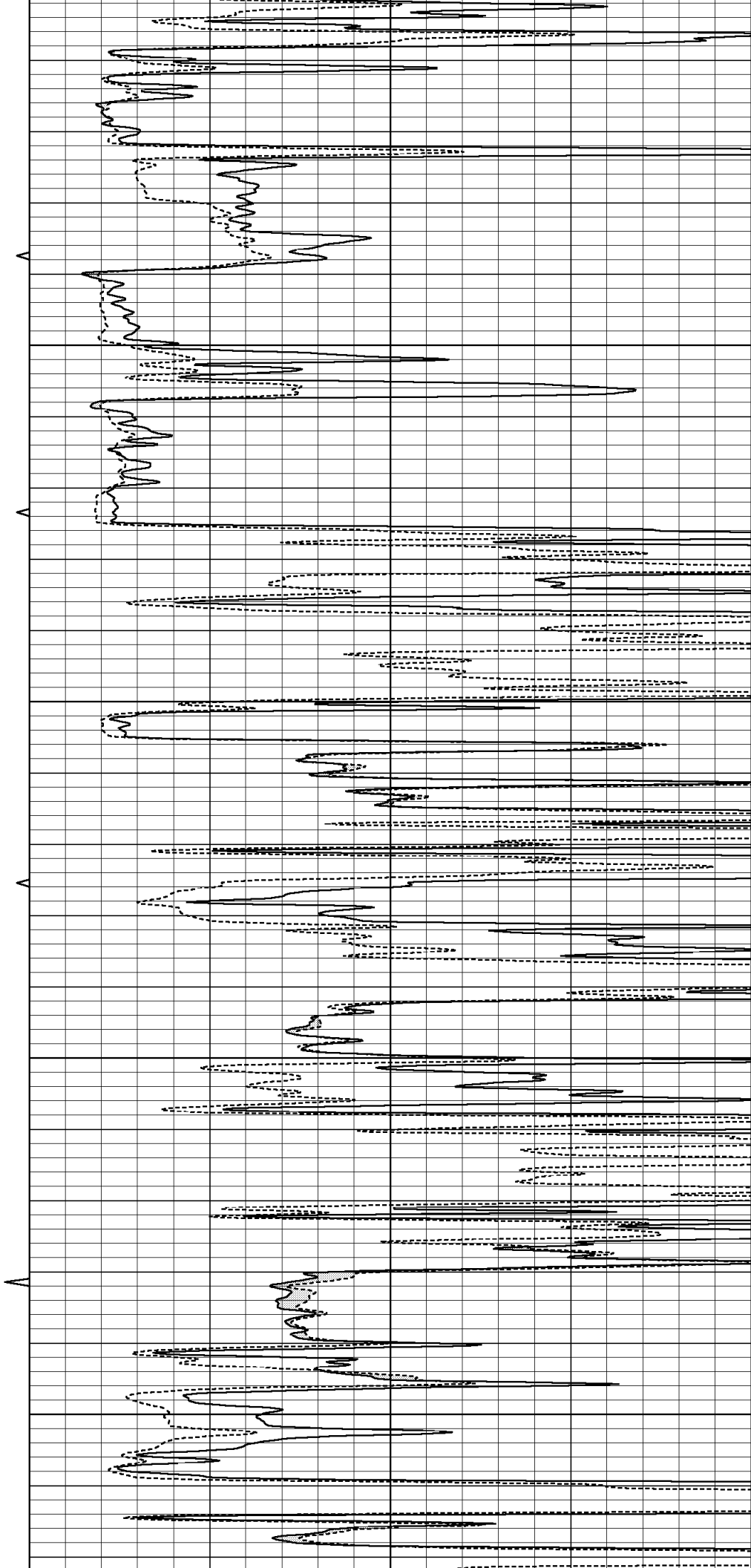


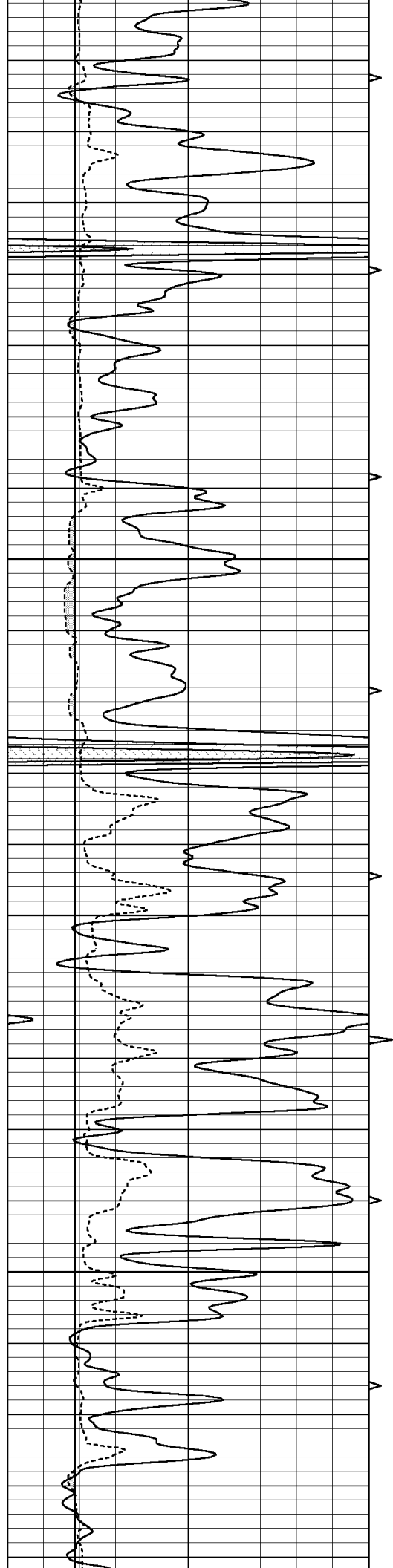
2600

2650

2700

2750



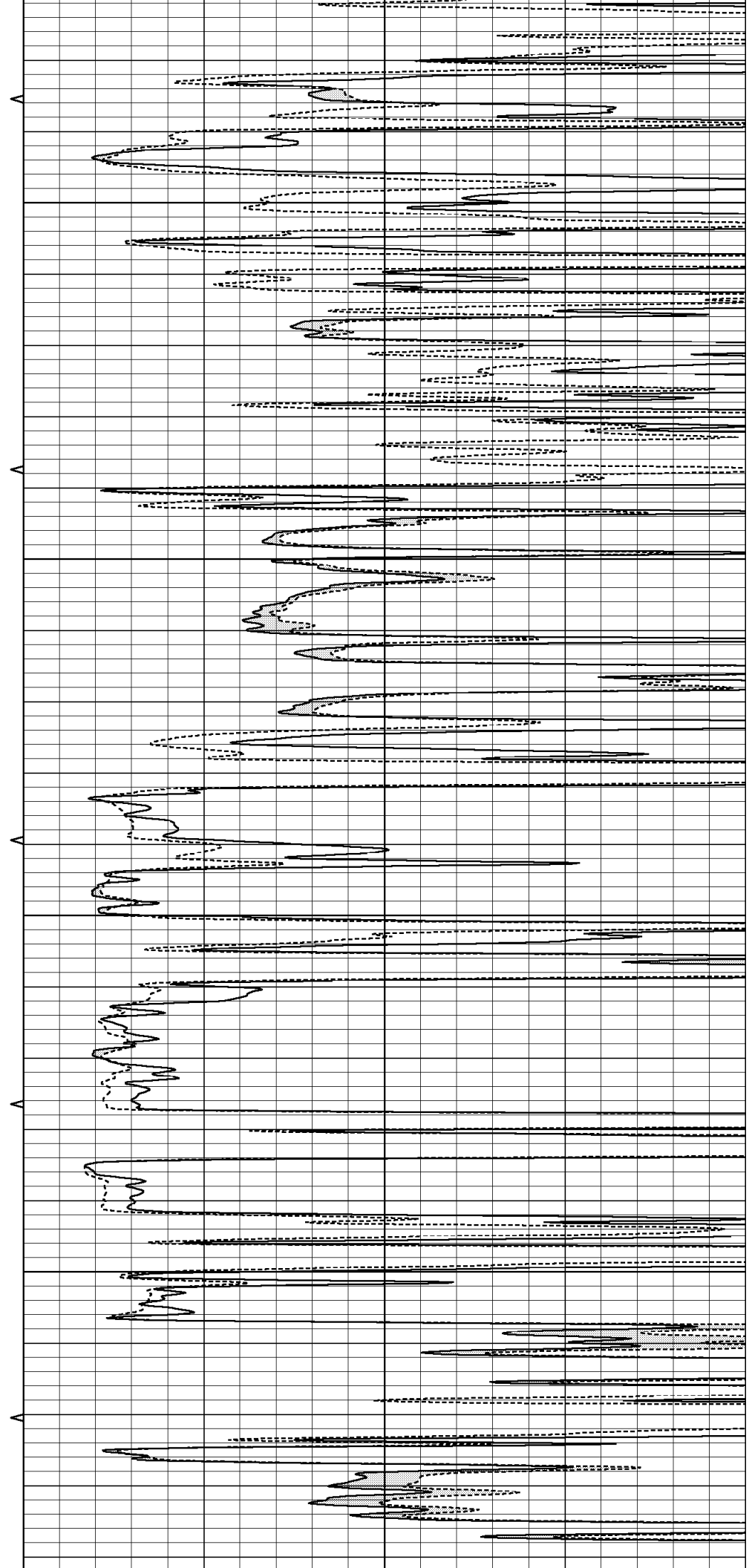


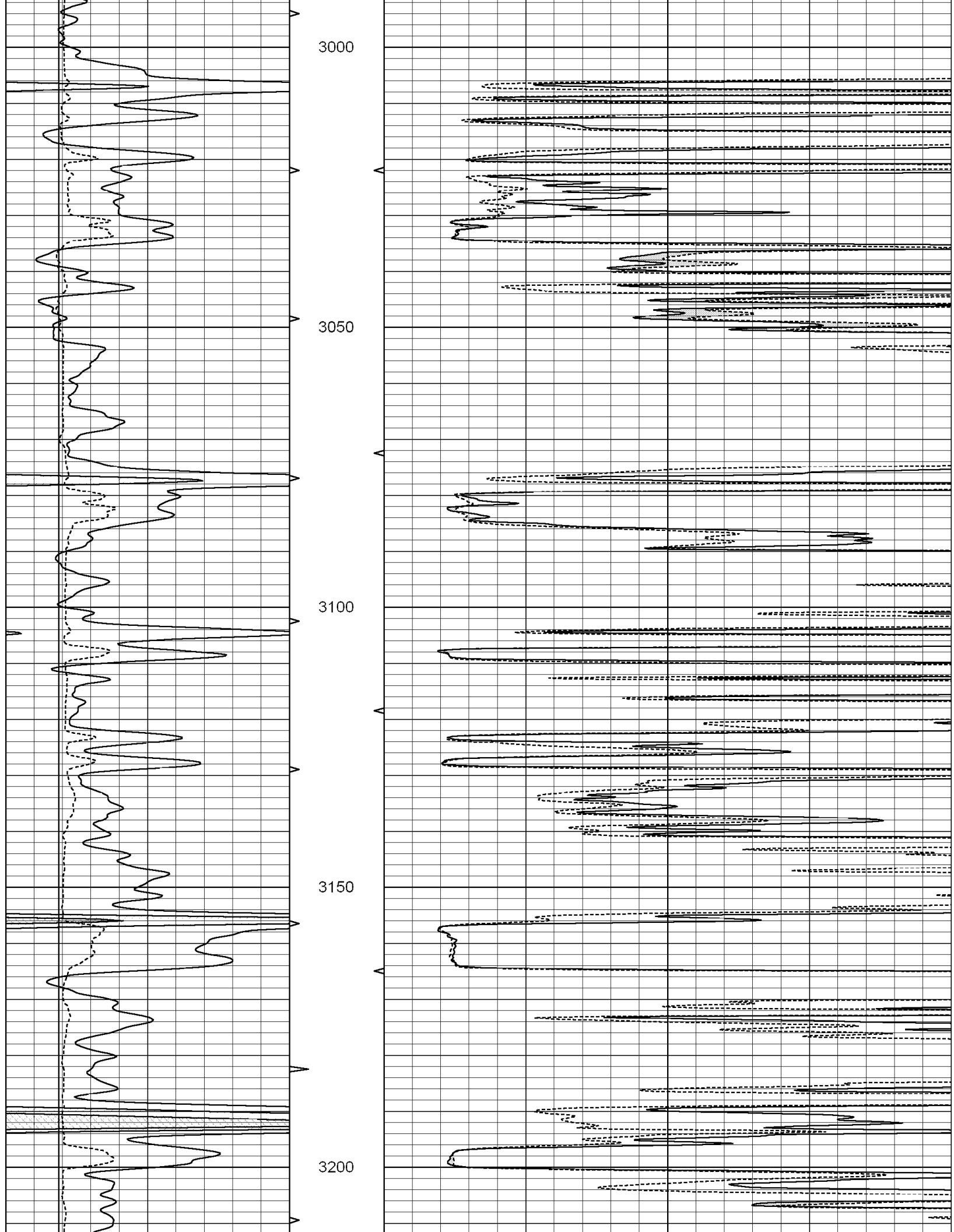
2800

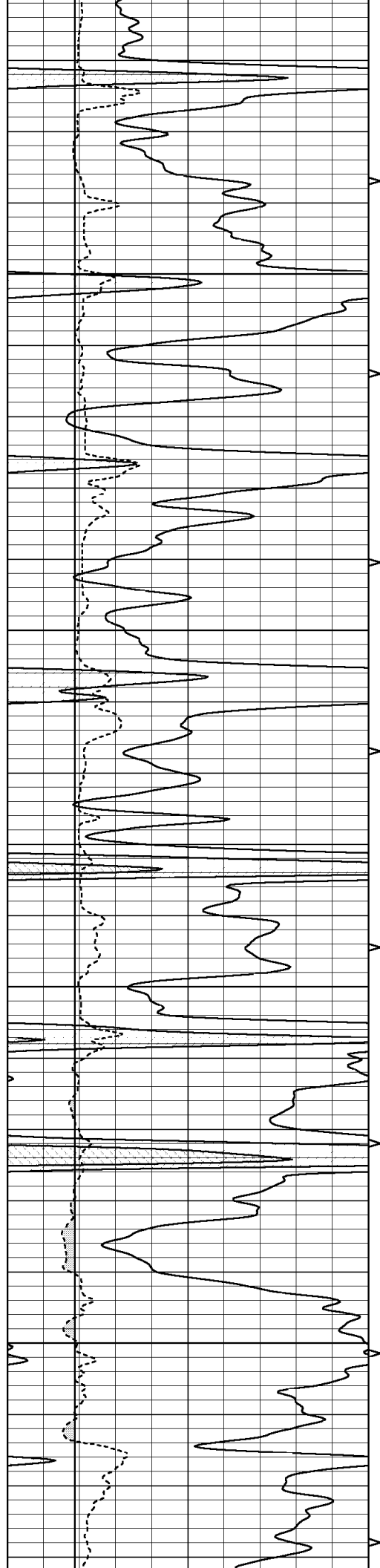
2850

2900

2950





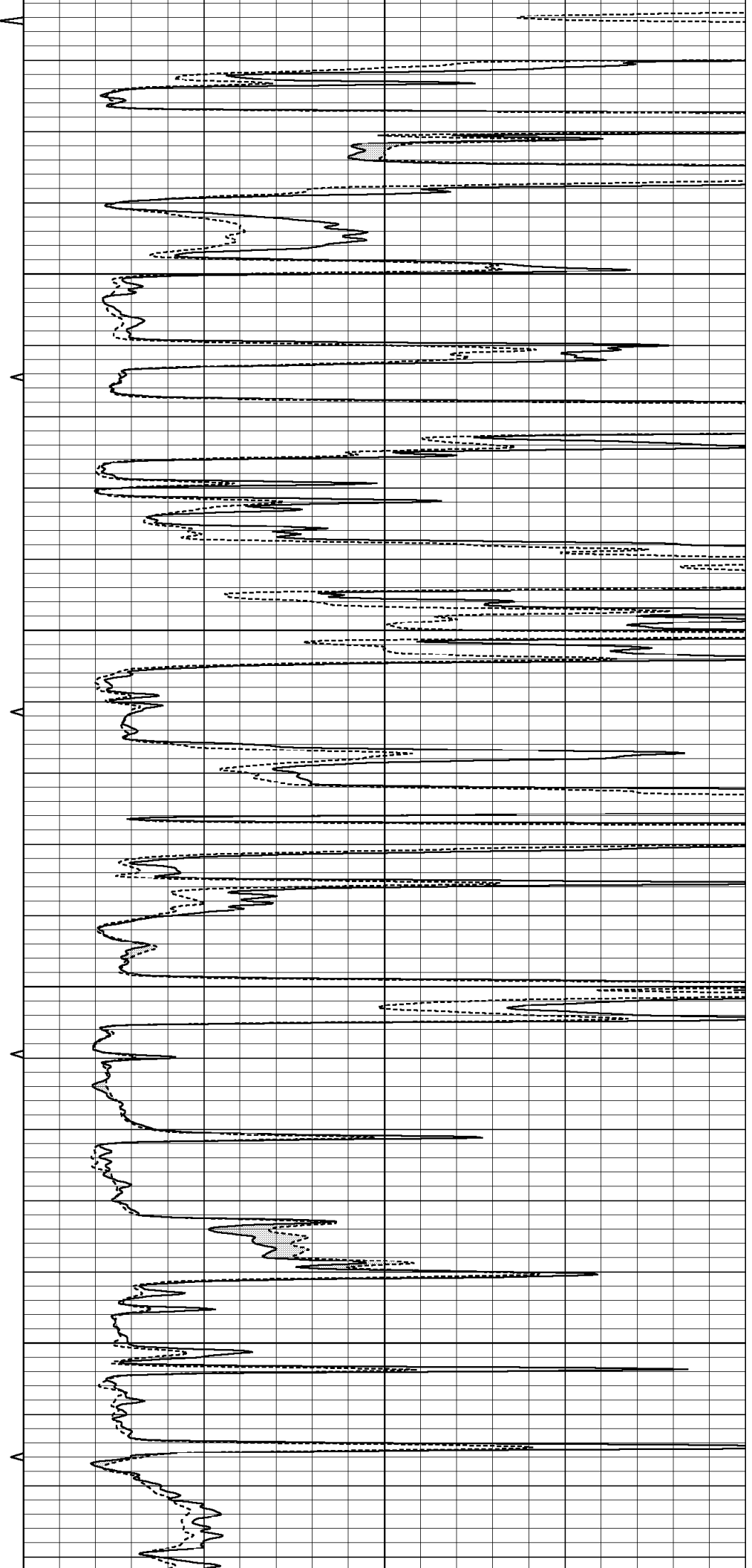


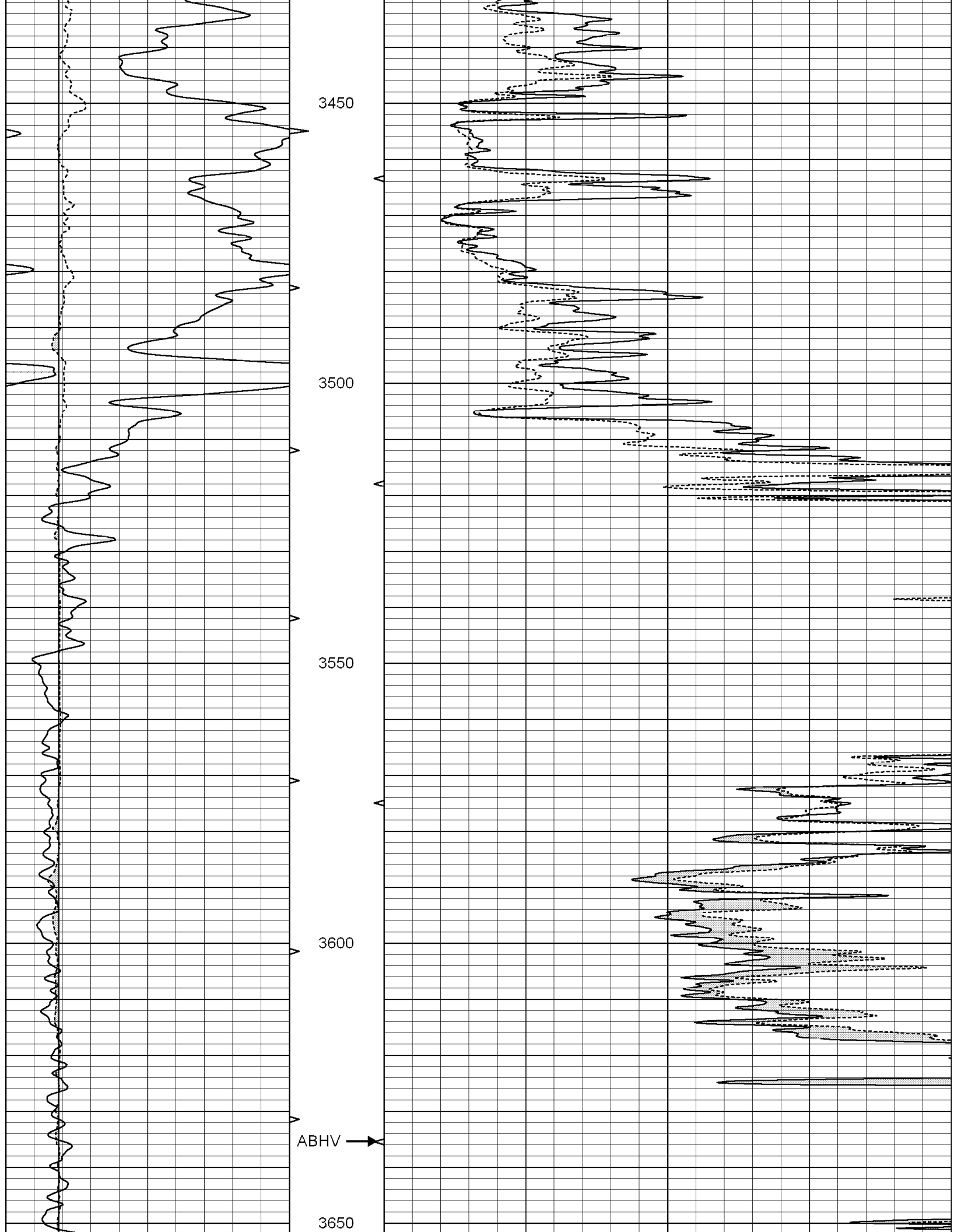
3250

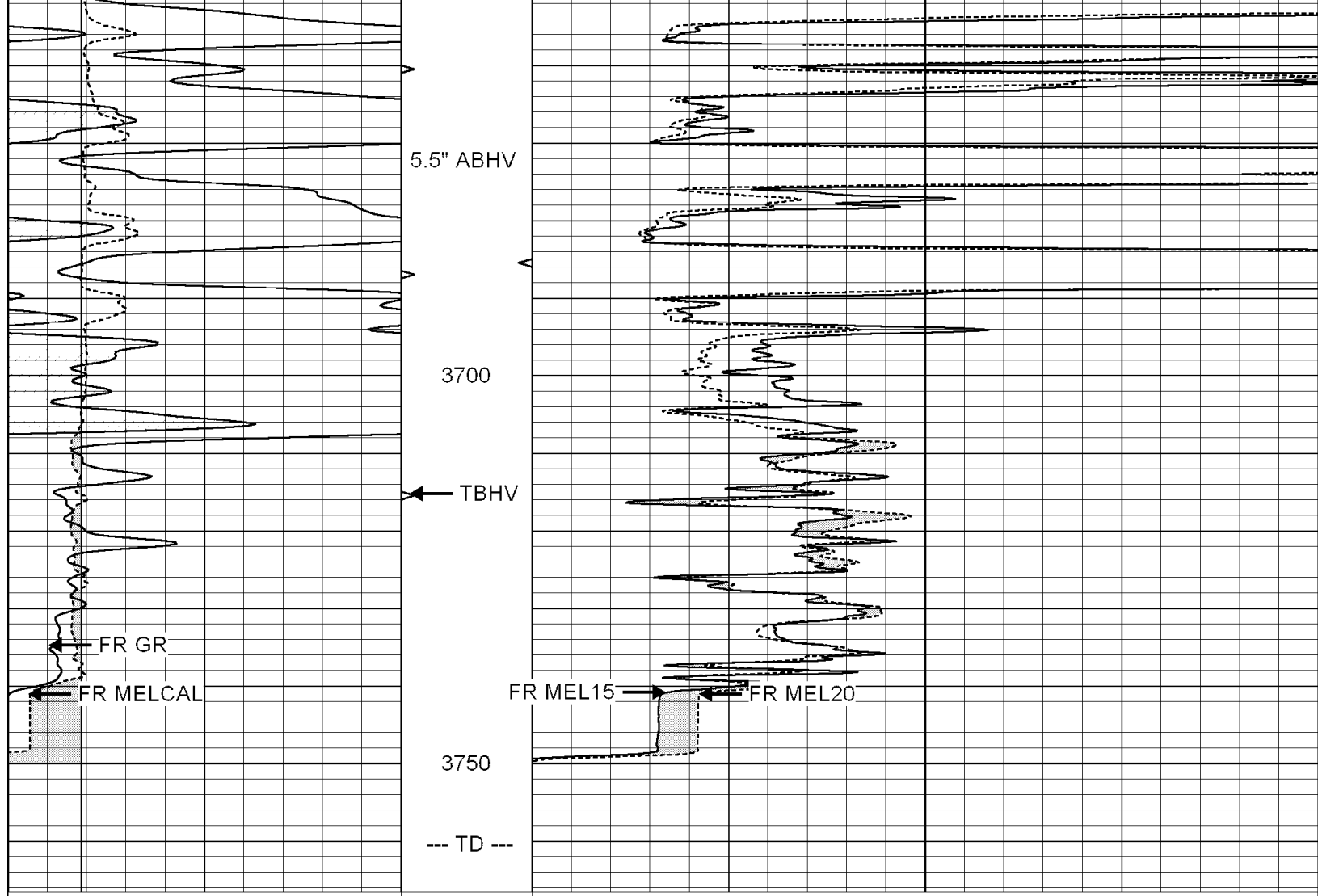
3300

3350

3400







0	GAMMA RAY (GAPI)	150	ABHV	0	MEL1.5 (Ohm-m)	20
6	CALIPER (in)	16	10 (ft3)	0	MEL2.0 (Ohm-m)	20
			TBHV			
			0 (ft3)	10		



SUPERIOR  
Hays,  
Kansas

# REPEAT SECTION

Database File: 003244ddn.db  
 Dataset Pathname: pass7.1A  
 Presentation Format: micro  
 Dataset Creation: Fri Apr 17 23:30:54 2009 by Calc Open-Cased 051020  
 Charted by: Depth in Feet scaled 1:240

0	GAMMA RAY (GAPI)	150	ABHV	0	MEL1.5 (Ohm-m)	20
6	CALIPER (in)	16	10 (ft3)	0	MEL2.0 (Ohm-m)	20
			TBHV			
			0 (ft3)	10		

