



Microresistivity Log

DIGITAL LOG (785) 625-3858

API No. 15-065-23,509-00-00	Company Murfin Drilling Company, Inc.	
	Well Sears McValler No. 1-19	
	Field Nora	
	County Graham	State Kansas
	Location E/2 - NW - SE - NW 1650' FNL & 1850' FWL	
	Sec: 19	Twp: 10 S Rge: 21 W
	Permanent Datum Log Measured From Drilling Measured From	Ground Level Kelly Bushing Frotkelly Bushing
		Elevation 2257 5 Ft. Above Perm. Datum
		Other Services CNL/CDL DIL/BHCS
		Elevation K.B. 2262 D.F. 2257 G.L. 2257

Date	12/5/2008
Run Number	Two
Depth Driller	4003
Depth Logger	4003
Bottom Logged Interval	4002
Top Log Interval	3000
Casing Driller	8.625 @ 219
Casing Logger	218
Bit Size	7.975
Type Fluid in Hole	Chemical
Salinity, ppm CL	2.600
Density / Viscosity	9.1 62
pH / Fluid Loss	11.5 6.4
Source of Sample	Flowline
Rm @ Meas. Temp	1.30 @ 50
Rmf @ Meas. Temp	0.98 @ 50
Rmc @ Meas. Temp	1.76 @ 50
Source of Rmf / Rmc	Charts
Rm @ BHT	0.56 @ 116
Operating Rig Time	5 Hours
Max Rec. Temp. F	116
Equipment Number	15
Location	Havs
Recorded By	B. Becker
Witnessed By	Kent Crisler

<<< Fold Here >>>

All interpretations are opinions based on inferences from electrical or other measurements and we cannot and do not guarantee the accuracy or correctness of any interpretation, and we shall not, except in the case of gross or willful negligence on our part, be liable or responsible for any loss, costs, damages, or expenses incurred or sustained by anyone resulting from any interpretation made by any of our officers, agents or employees. These interpretations are also subject to our general terms and conditions set out in our current Price Schedule.

Comments

Thank you for using Log-Tech, Inc.
 (785) 625-3858

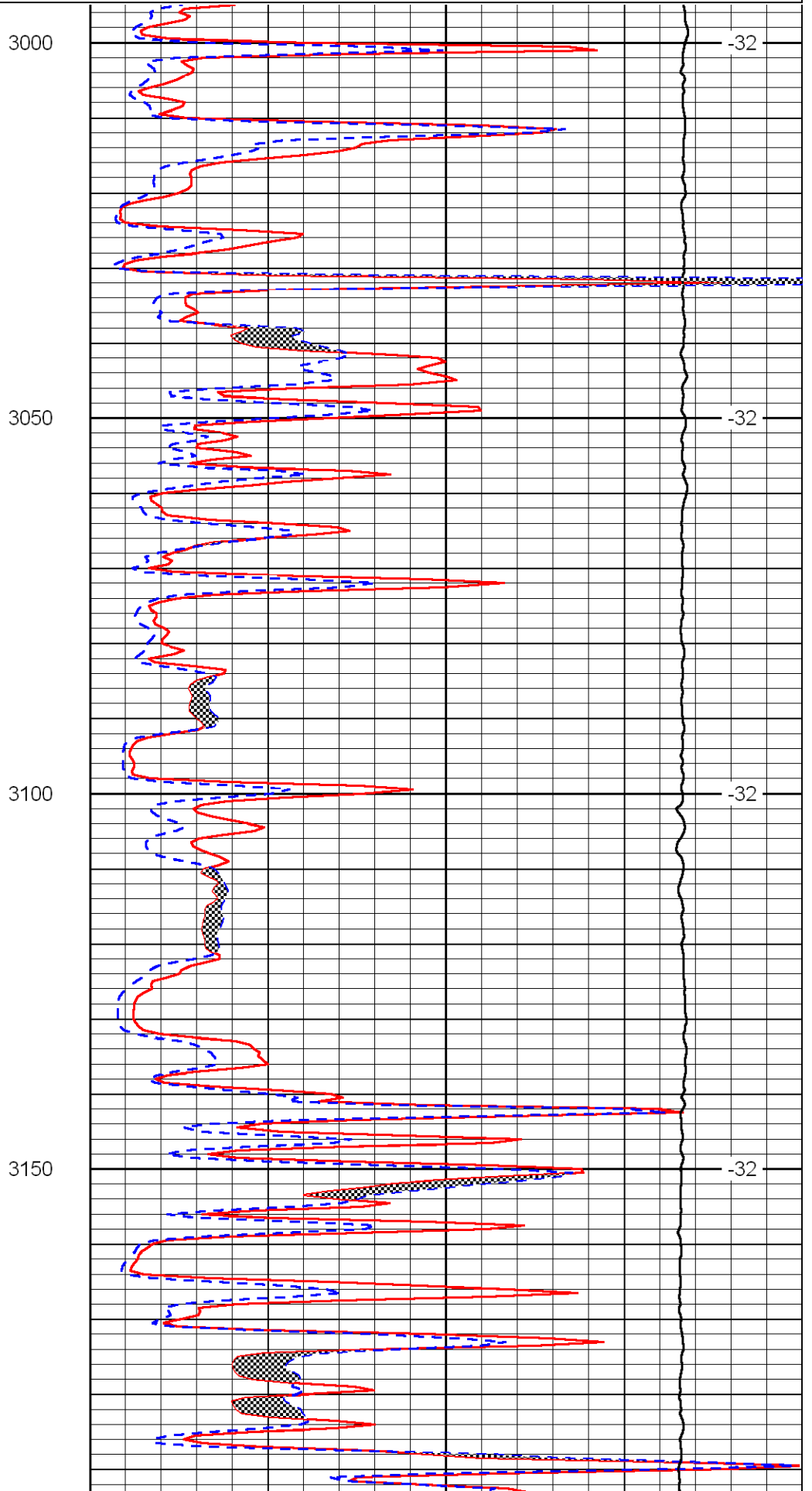
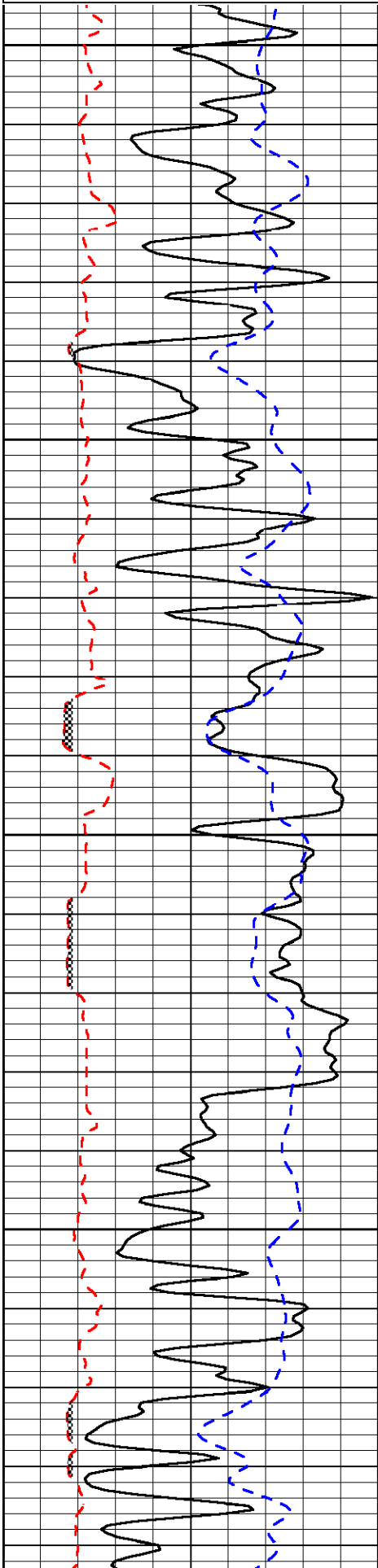
 Ellis, Ks; North to CC Rd; 7 West to 350th;
 1/2 North; West Into

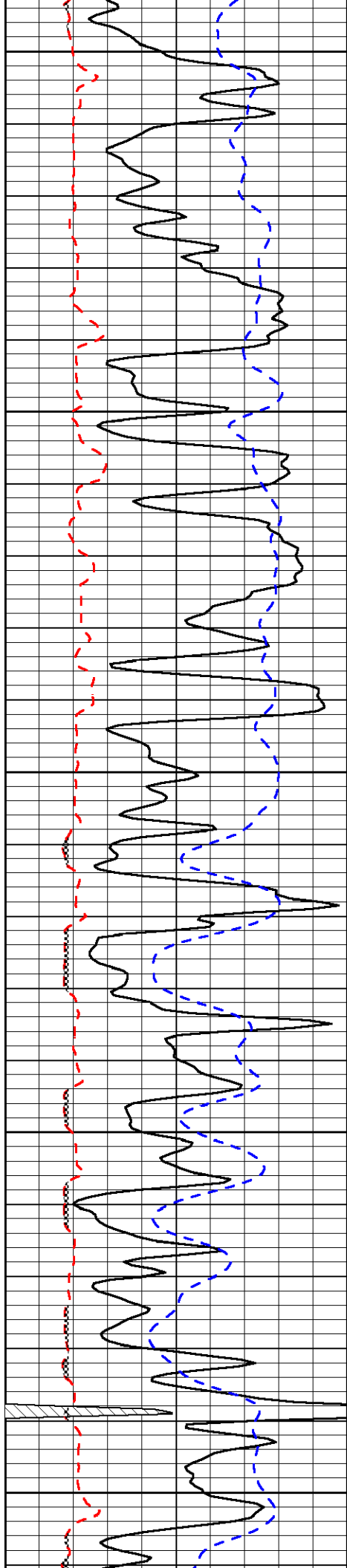
Database File:	c:\warrior\data\murfin_sears mcwaller no. 1-19\murfinhd.db
Dataset Pathname:	DIL/murfstk
Presentation Format:	micro
Dataset Creation:	Fri Dec 05 15:11:18 2008
Charted by:	Depth in Feet scaled 1:240

0	Gamma Ray	150
6	Micro Log Caliper (GAPI)	16
-200	SP	0

0	Micro Inverse 1 X 1	40
0	Micro Normal 2"	40
10000	Line Weight	0

LSPD





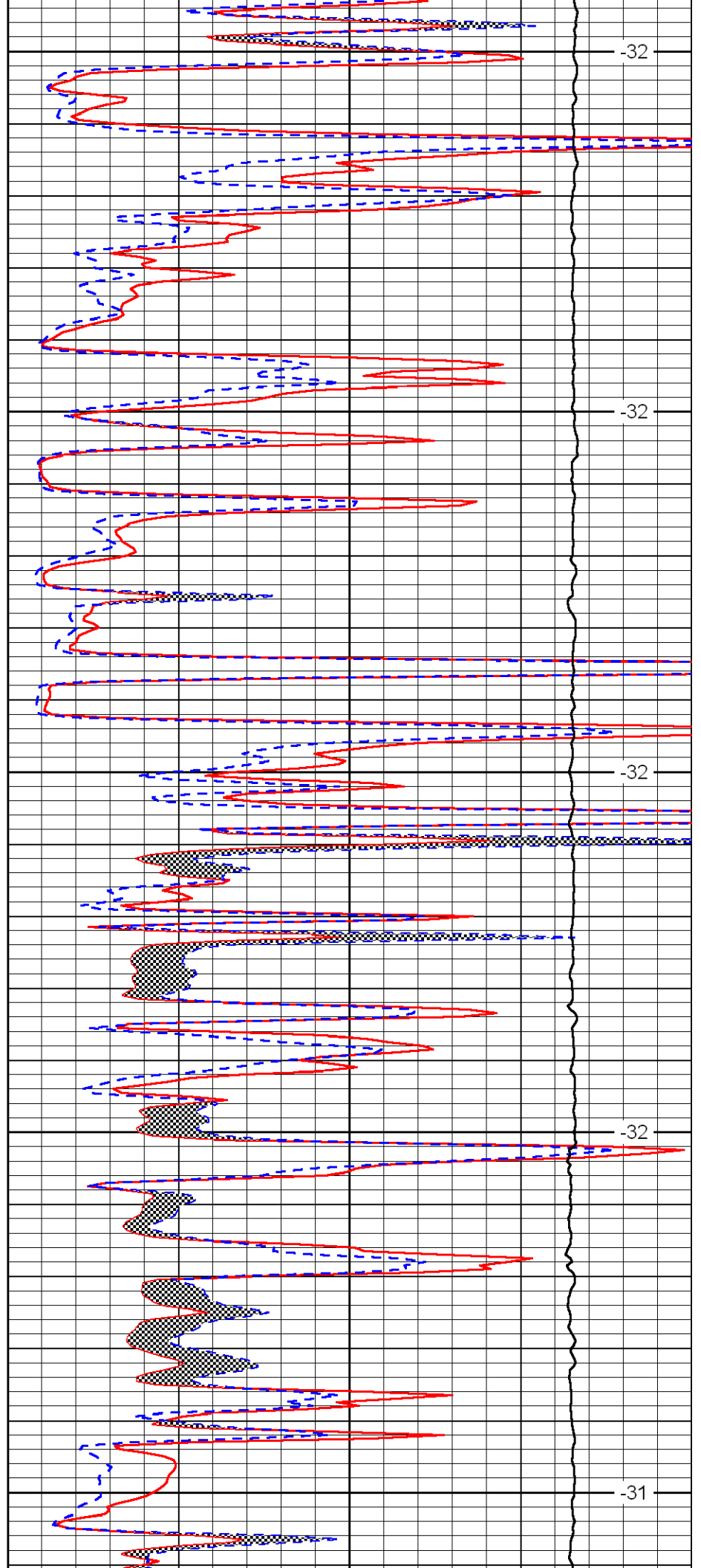
3200

3250

3300

3350

3400



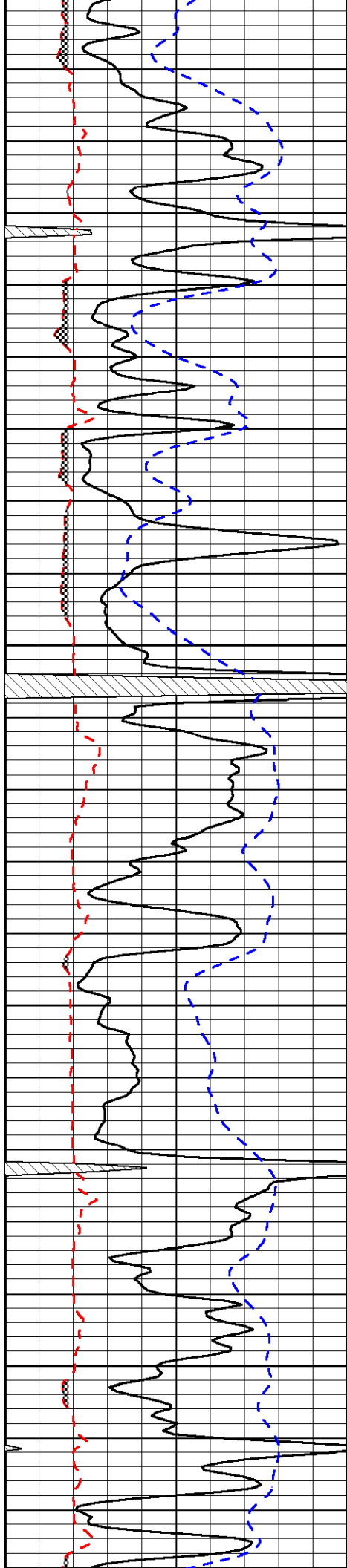
-32

-32

-32

-32

-31

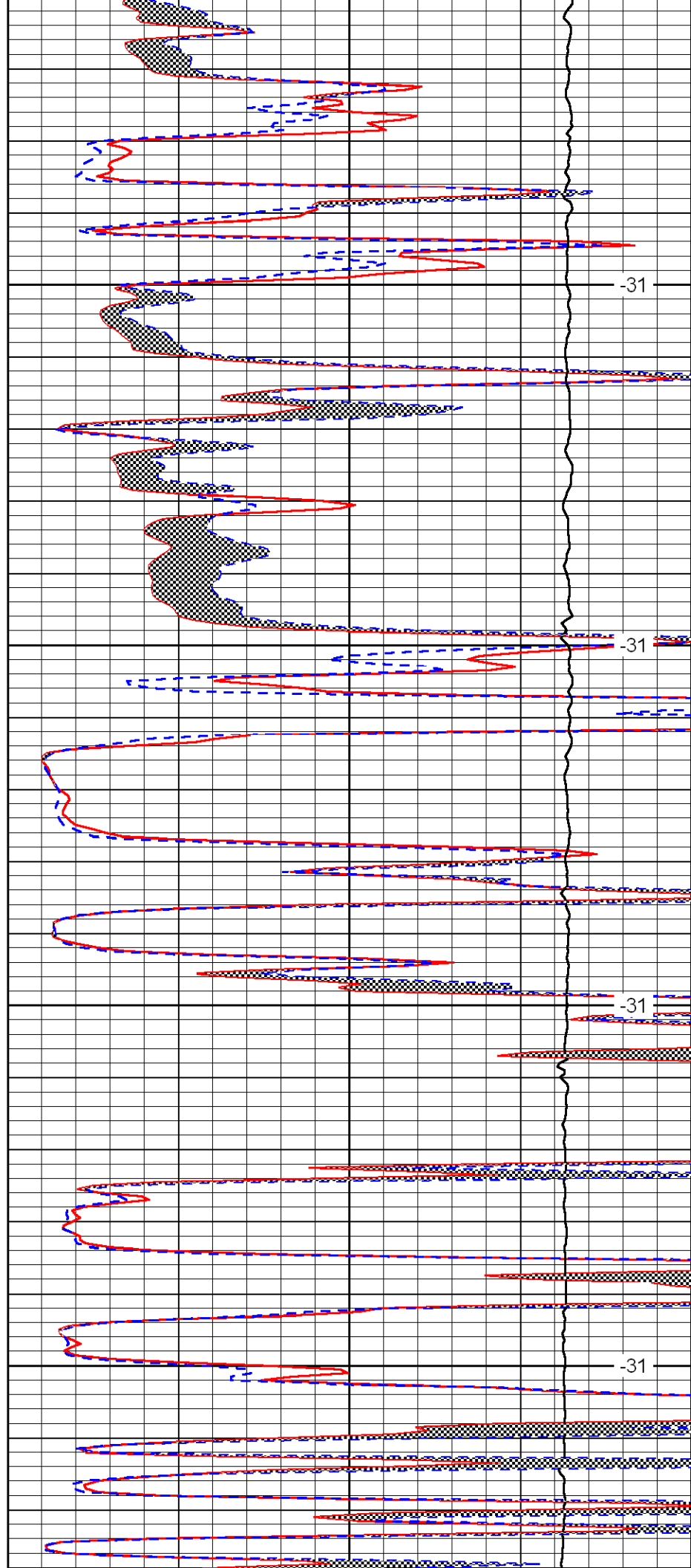


3450

3500

3550

3600

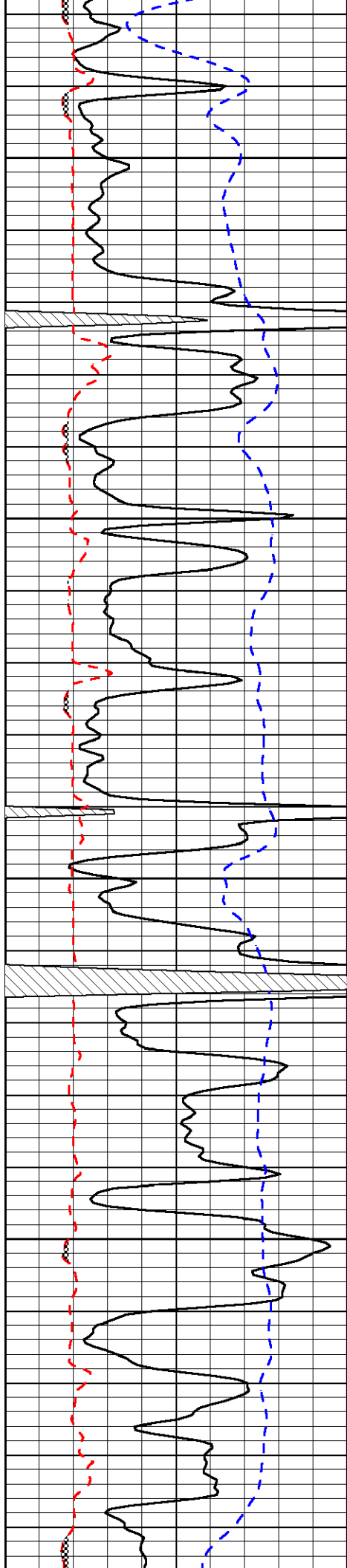


-31

-31

-31

-31

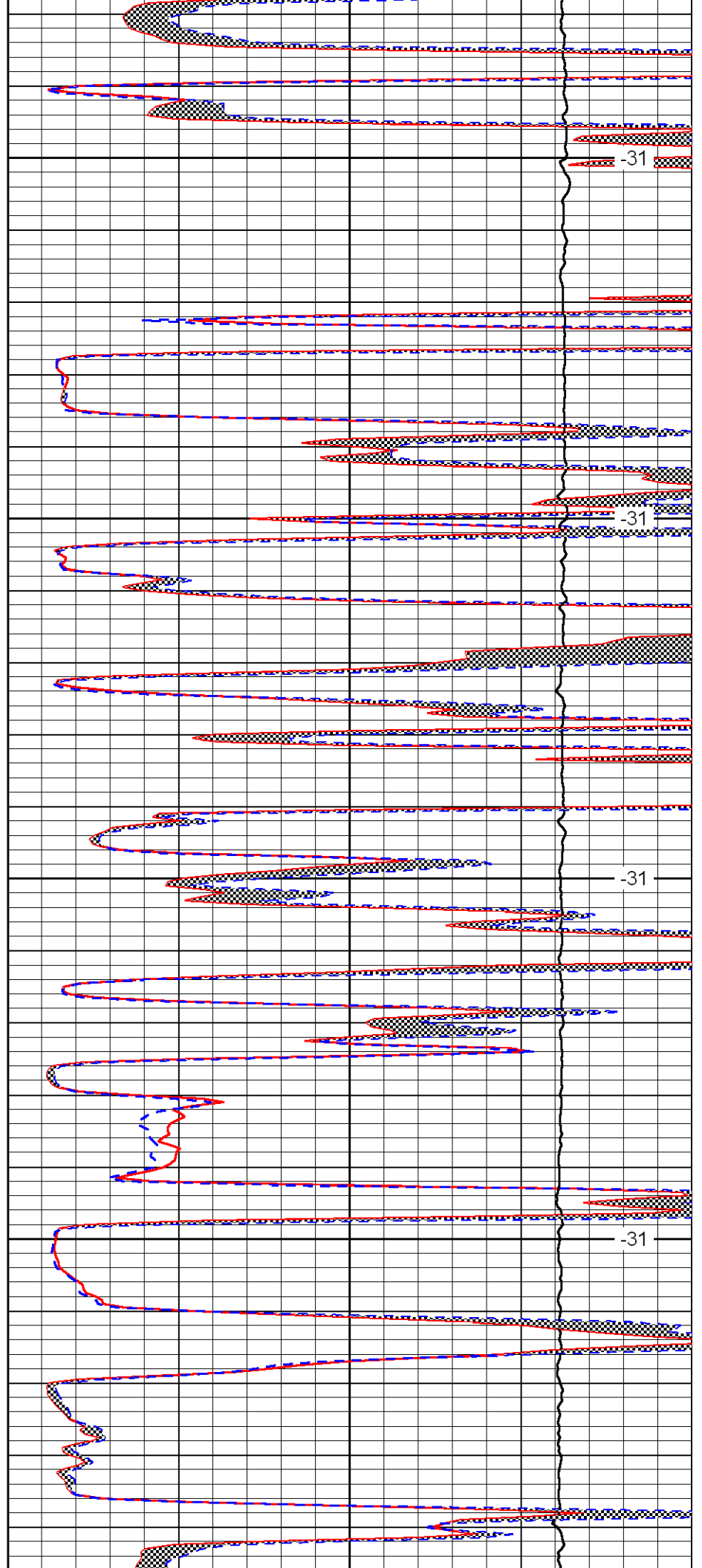


3650

3700

3750

3800



-31

-31

-31

-31

