



SUPERIOR
Hays,
Kansas

MICRO
LOG

Company: TRANSPACIFIC OIL CORP.
Well: BROWN "A" #1-3
Field: WILDCAT
County: RUSSELL
State: KANSAS

Company: TRANSPACIFIC OIL CORPORATION
Well: BROWN "A" #1-3
Field: WILDCAT
County: RUSSELL
State: KANSAS

Location: API #: 15-167-23566-0000
1908FSL & 1439FWL
C-N/2-SW
SEC 3 TWP 11S RGE 13W
Permanent Datum: GROUND LEVEL Elevation: 1721
Log Measured From: KELLY BUSHING 8' A.G.L.
Drilling Measured From: KELLY BUSHING
Other Services: DIL/CDL C/NL/SONIC
Elevation: K.B. 1729 D.F. 1727 G.L. 1721

Date	04/08/2009
Run Number	TWO
Depth Driller	3625
Depth Logger	3626
Bottom Logged Interval	3609
Top Log Interval	2000
Casing Driller	8 5/8 @ 436'
Casing Logger	437'
Bit Size	7 7/8
Type Fluid In Hole	CHEMICAL MUD
Density / Viscosity	9.3 / 55
pH / Fluid Loss	10.0 / 9.8
Source of Sample	FLOWLINE
Rm @ Meas. Temp	0.75 @ 86F
Rmf @ Meas. Temp	0.56 @ 86F
Rmc @ Meas. Temp	0.90 @ 86F
Source of Rmf / Rmc	CAL/CAL
Rm @ BHT	0.57 @ 113F
Time Circulation Stopped	2 HOURS
Time Logger on Bottom	2:45 PM
Maximum Recorded Temperature	113F
Equipment Number	680
Location	HAYS, KS
Recorded By	JEFF GRONEWEG
Witnessed By	BETH ISERN
	JOE CRATHORNE

<<< Fold Here >>>

All interpretations are opinions based on inferences from electrical or other measurements and we cannot and do not guarantee the accuracy or correctness of any interpretation, and we shall not, except in the case of gross or willful negligence on our part, be liable or responsible for any loss, costs, damages, or expenses incurred or sustained by anyone resulting from any interpretation made by any of our officers, agents or employees. These interpretations are also subject to our general terms and conditions set out in our current Price Schedule.

Comments

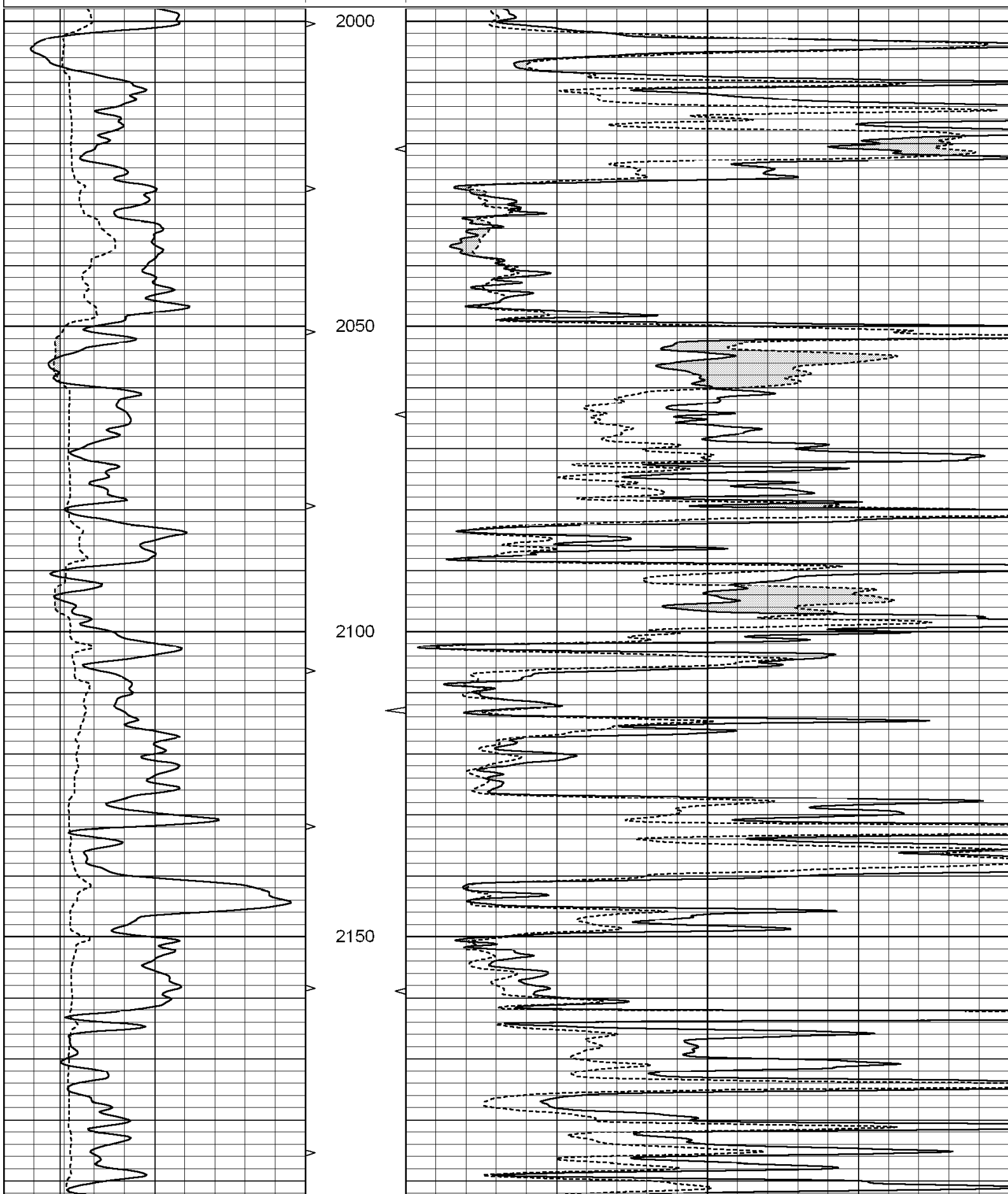
THANK YOU FOR USING SUPERIOR WELL SERVICES
HAYS, KS. 785-628-6395

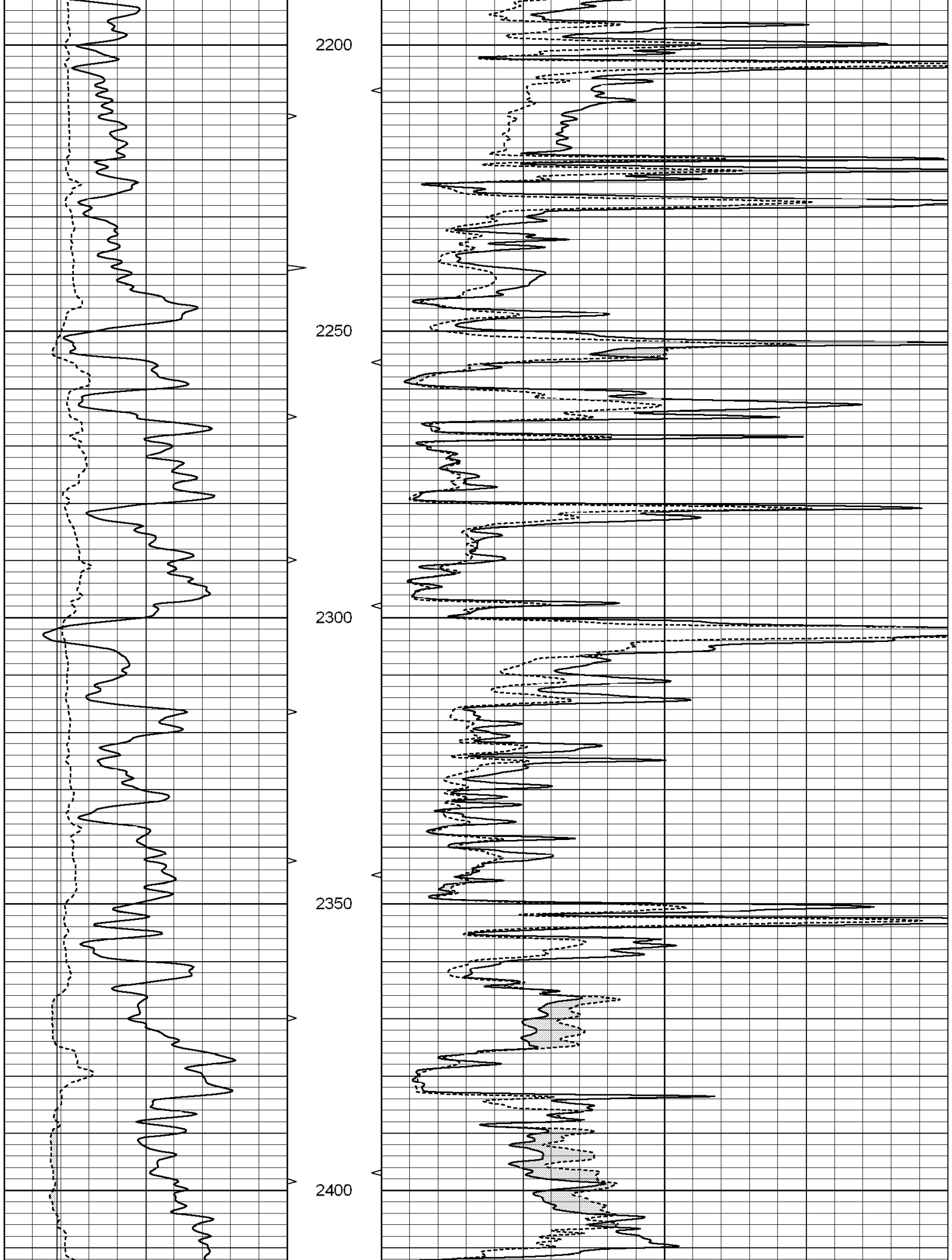
DIRECTIONS: WALDO; 2 MILES EAST, 1/2 MILE NORTH, EAST INTO

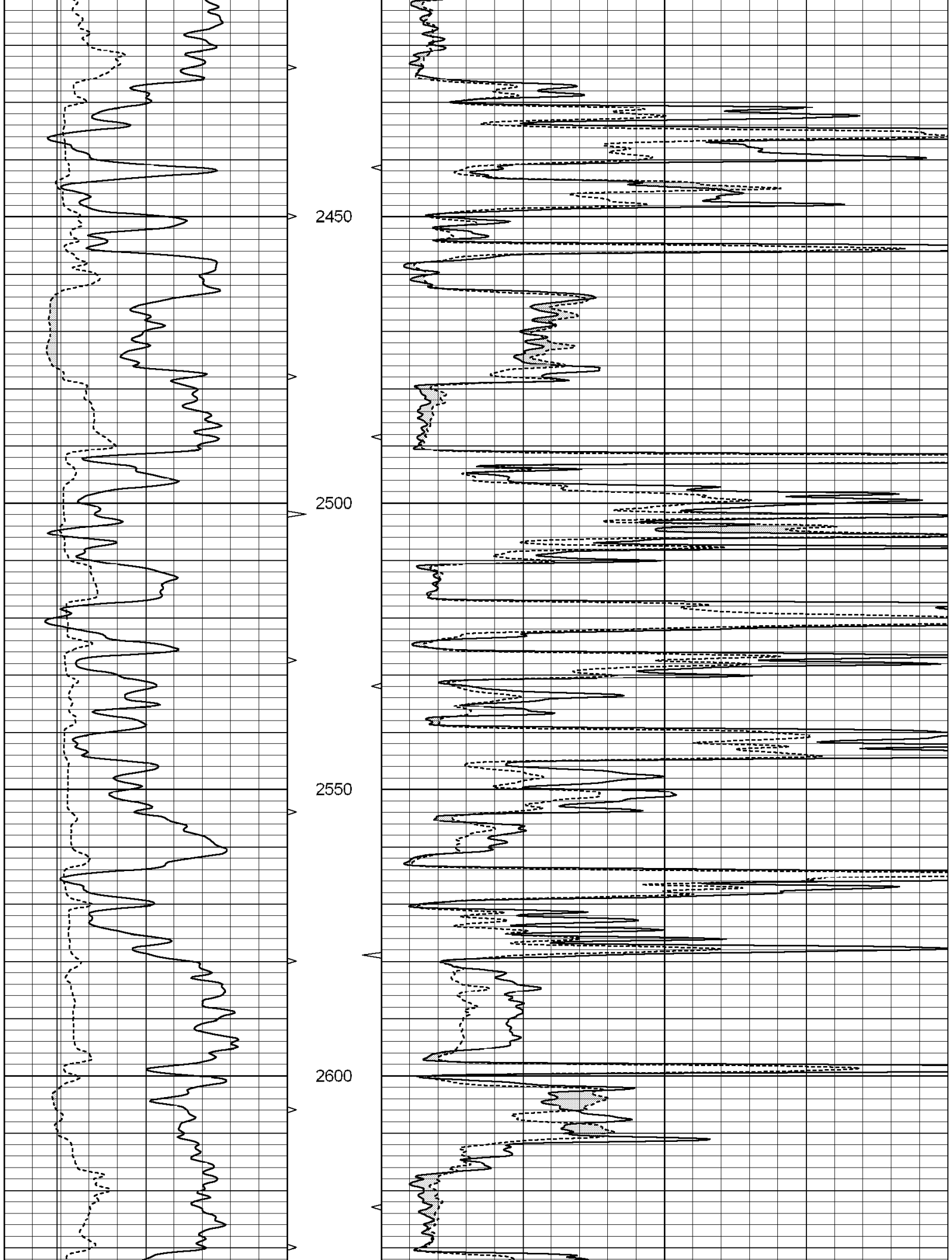
Charted by:

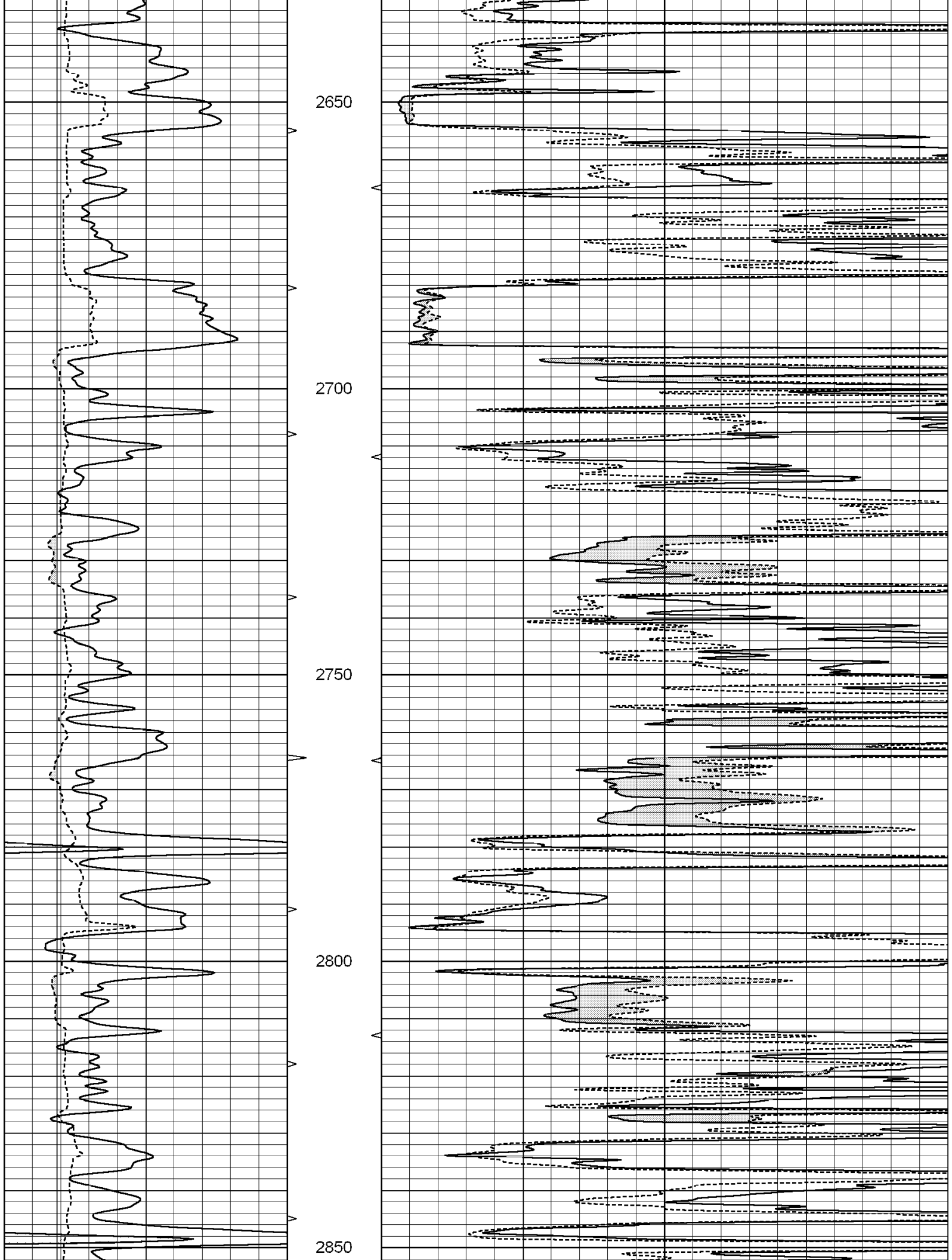
Depth in Feet scaled 1:240

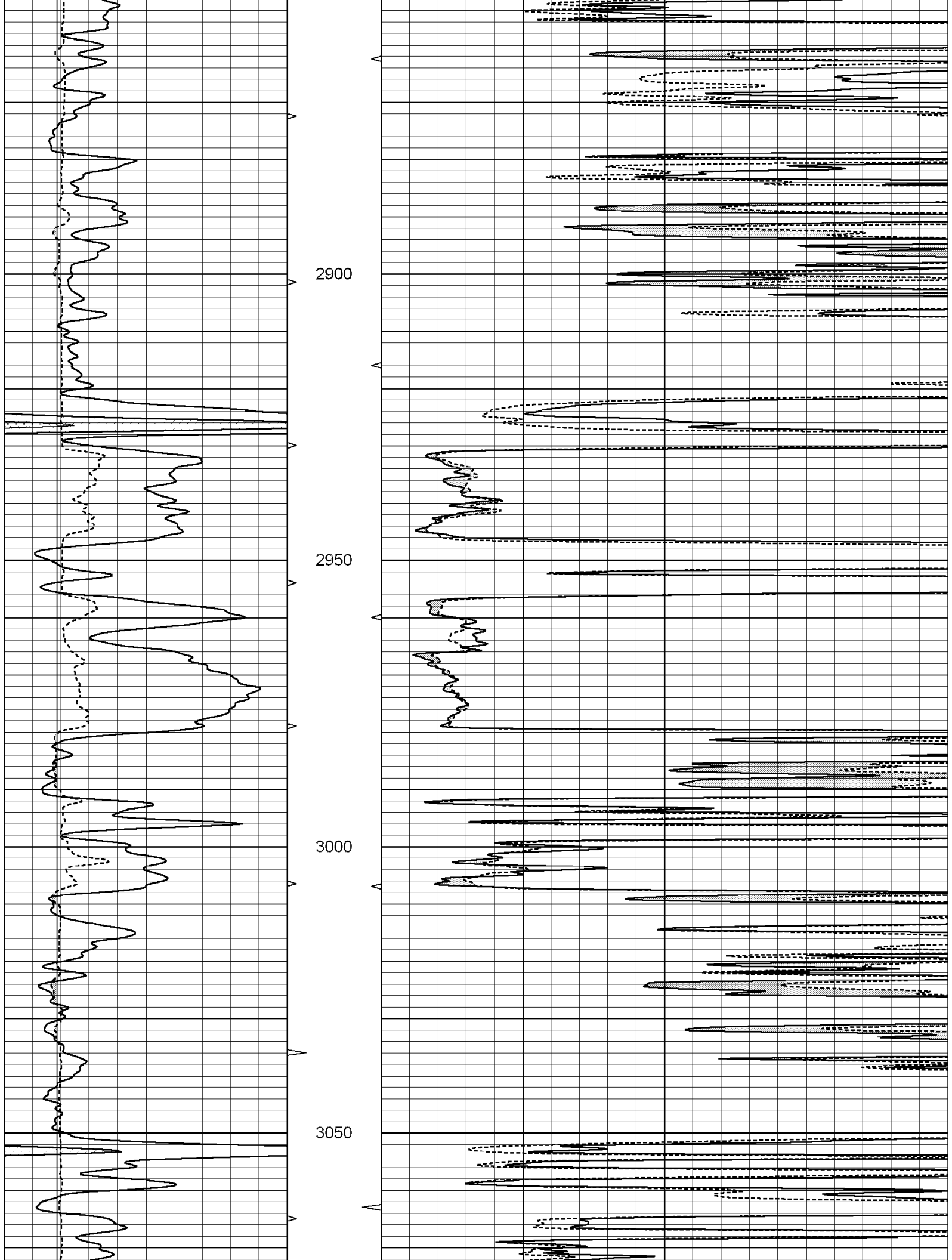
0	GAMMA RAY (GAPI)	150	ABHV	0	MEL1.5 (Ohm-m)	20
6	CALIPER (in)	16	10 (ft3)	0 0	MEL2.0 (Ohm-m)	20
			TBHV			
			0 (ft3)	10		

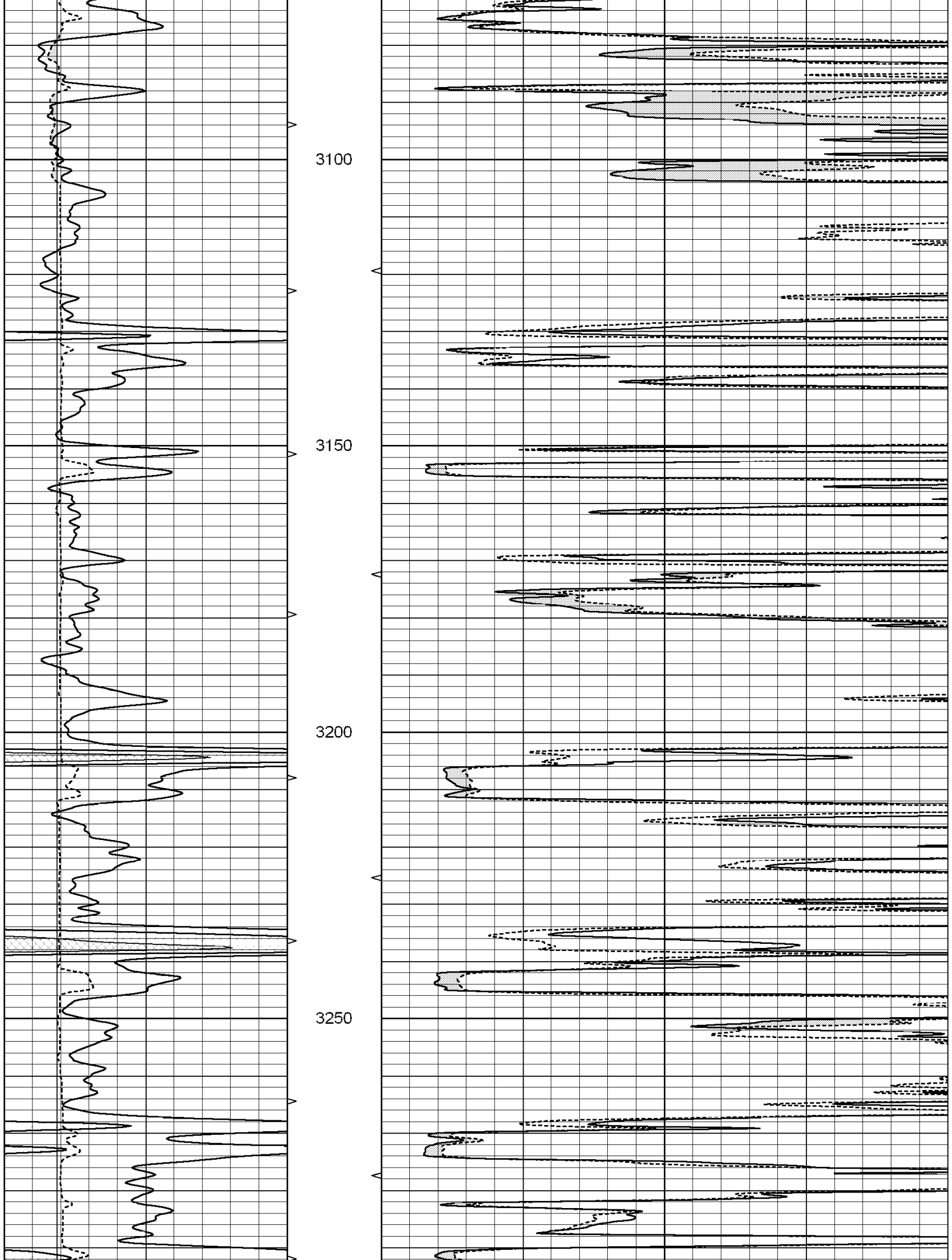


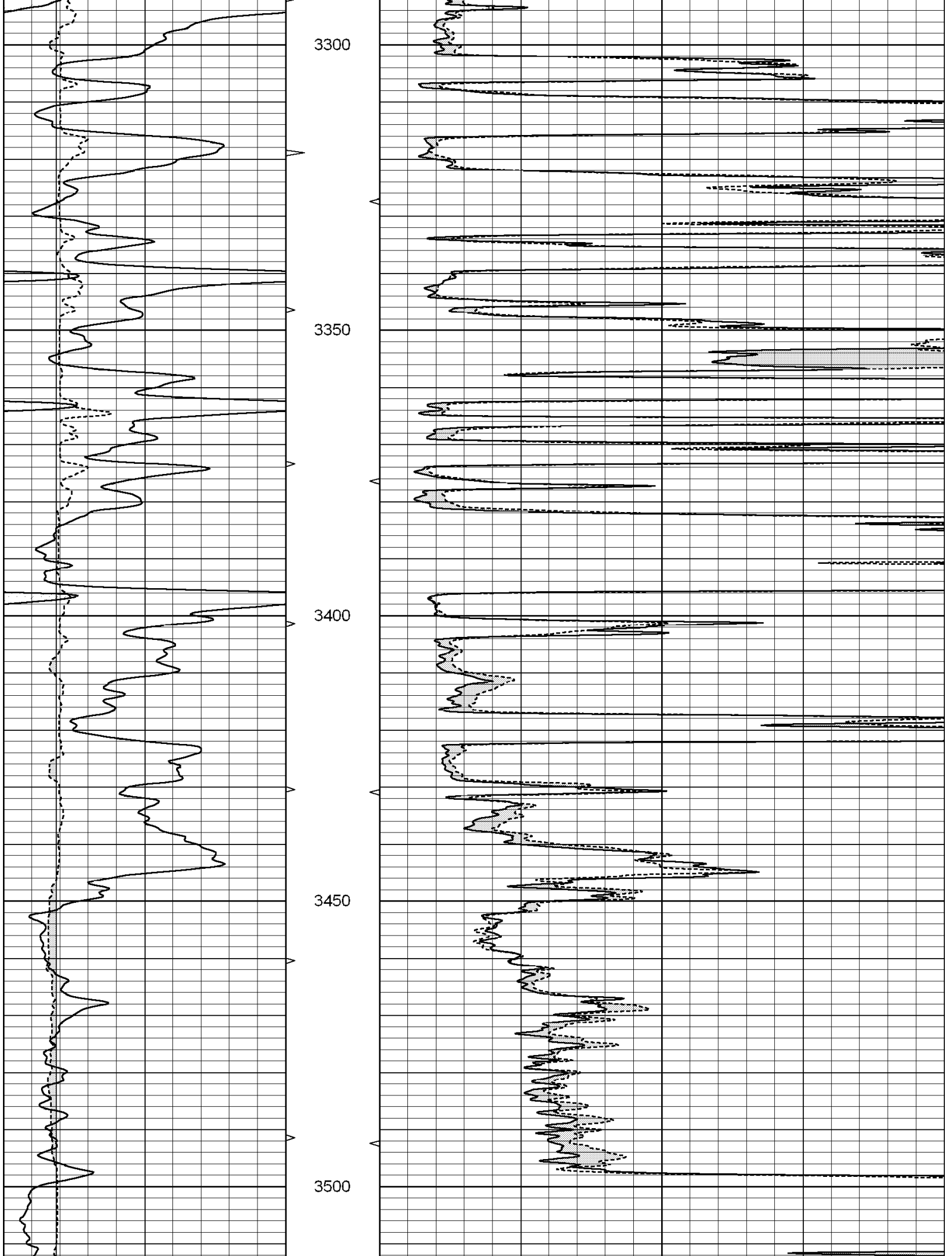


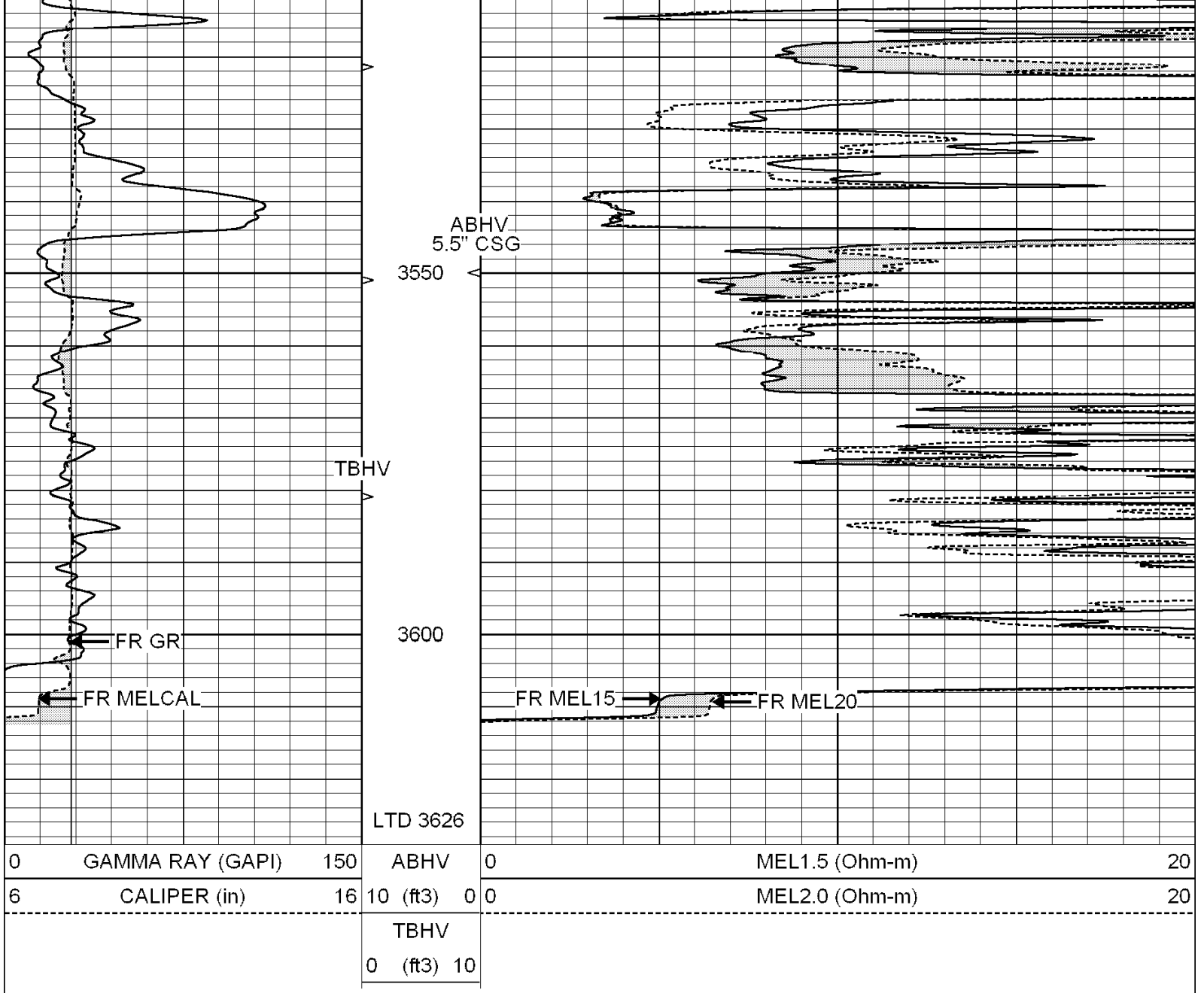










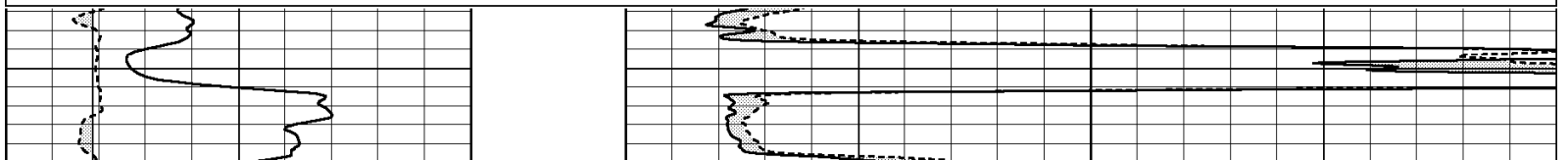


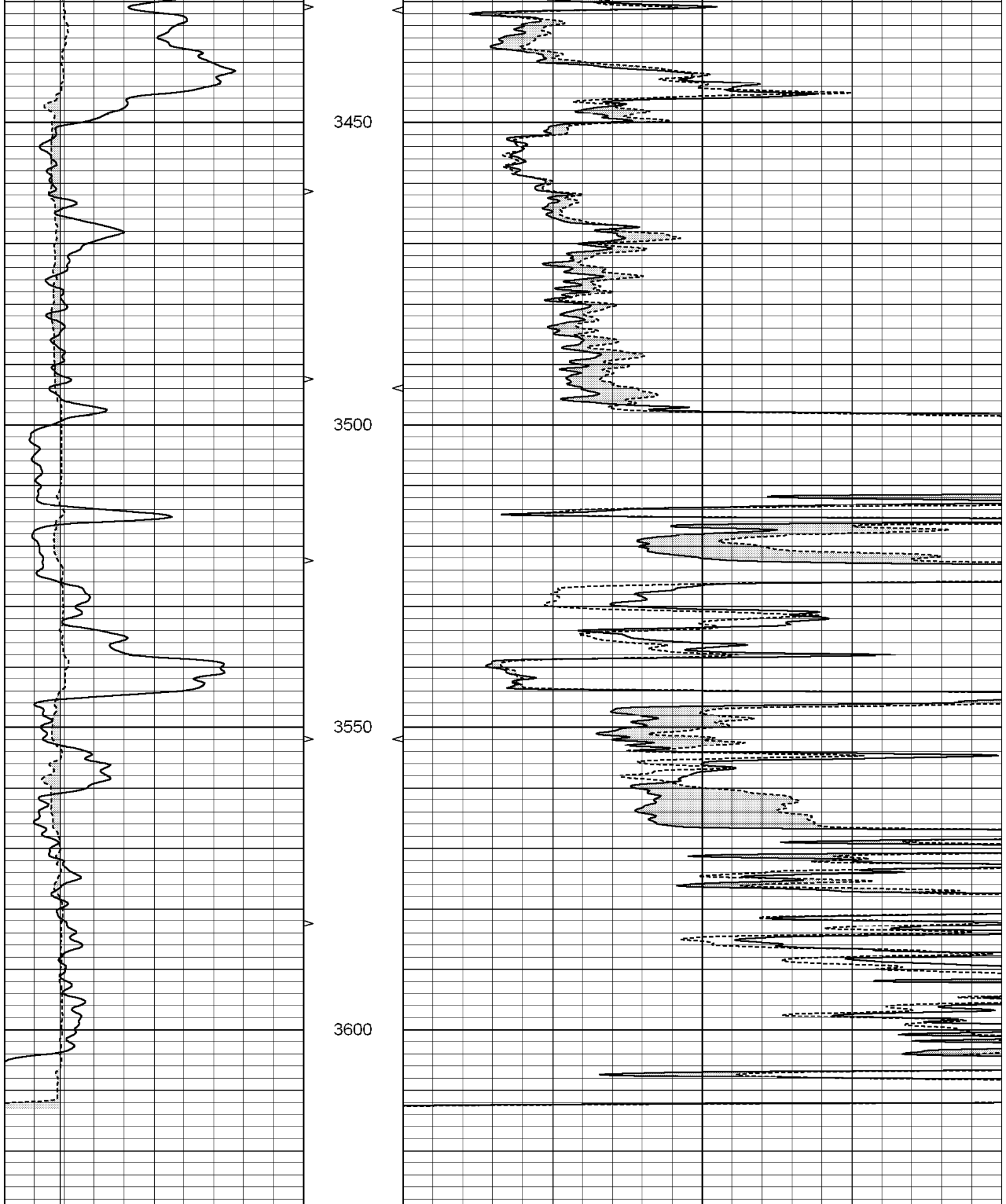
SUPERIOR
 Hays,
 Kansas

REPEAT SECTION

Database File: 003705ddn.db
 Dataset Pathname: pass5.2
 Presentation Format: _micro
 Dataset Creation: Wed Apr 08 18:02:44 2009 by Calc Open-Cased 070814
 Charted by: Depth in Feet scaled 1:240

0	GAMMA RAY (GAPI)	150	ABHV	0	MEL1.5 (Ohm-m)	20
6	CALIPER (in)	16	10 (ft3)	0	MEL2.0 (Ohm-m)	20
			TBHV			
			0 (ft3)	10		





0	GAMMA RAY (GAPI)	150	ABHV	0	MEL1.5 (Ohm-m)	20
6	CALIPER (in)	16	10 (ft3)	0	MEL2.0 (Ohm-m)	20
			TBHV			
			0 (ft3)	10		

Calibration Report

Database File: 003705ddn.db
 Dataset Pathname: pass6.2
 Dataset Creation: Wed Apr 08 17:59:13 2009 by Calc Open-Cased 070814

MICRO Calibration Report

Serial Number: MICRO6
 Tool Model: PROBE
 Performed: Wed Dec 12 15:00:13 2007

Caliper Calibration:	Gain=3.900	Offset=3.177
	Low Cal	High Cal
References	7.900	14.250
Readings	1.185	2.814

1.5" Calibration:	Gain=32.781	Offset=-0.751
	Low Cal	High Cal
References	0.000	20.000
Readings	0.008	1.200

2" Calibration:	Gain=40.739	Offset=-0.393
	Low Cal	High Cal
References	0.000	20.000
Readings	0.008	0.888

Gamma Ray Calibration Report

Serial Number: GR6
 Tool Model: OPEN
 Performed: Mon Apr 06 01:29:18 2009

Calibrator Value:	150.0	GAPI
Background Reading:	0.0	cps
Calibrator Reading:	276.0	cps
Sensitivity:	0.6435	GAPI/cps