



Dual Compensated  
Porosity Log

DIGITAL LOG (785) 625-3858

API No. 15-063-21,739-00-00

Company H & M Petroleum Corporation  
 Well Bonita Springs No. 4  
 Field Bonita Springs  
 County Gove  
 State Kansas

Location 2180' FNL & 1370' FWL  
 Sec: 13 Twp: 12 S Rge: 31 W

Other Services  
 DIL  
 MEL/BHCS

Permanent Datum Ground Level Elevation 2911  
 Log Measured From Kelly Bushing 5 Ft. Above Perm. Datum  
 Drilling Measured From Kelly Bushing

K.B. 2916  
 D.F.  
 G.L. 2911

Date 11/06/2008

Run Number One

Type Log CNL / CDL

Depth Driller 4650

Depth Logger 4650

Bottom Logged Interval 4629

Top Logged Interval 3600

Type Fluid In Hole Chemical

Salinity, PPM CL 2,400

Density 9.4

Level Full

Max. Rec. Temp. F 125

Operating Rig Time 4 Hours

Equipment -- Location 10 Hays

Recorded By B. Reiners

Witnessed By Rick Hall

Run No	Bit	Borehole Record		Casing Record	
		From	To	From	To
1	12.25	00	220	8.625	24#
2	7.875	220	4650		

<<< Fold Here >>>

All interpretations are opinions based on inferences from electrical or other measurements and we cannot and do not guarantee the accuracy or correctness of any interpretation, and we shall not, except in the case of gross or willful negligence on our part, be liable or responsible for any loss, costs, damages, or expenses incurred or sustained by anyone resulting from any interpretation made by any of our officers, agents or employees. These interpretations are also subject to our general terms and conditions set out in our current Price Schedule.

Comments

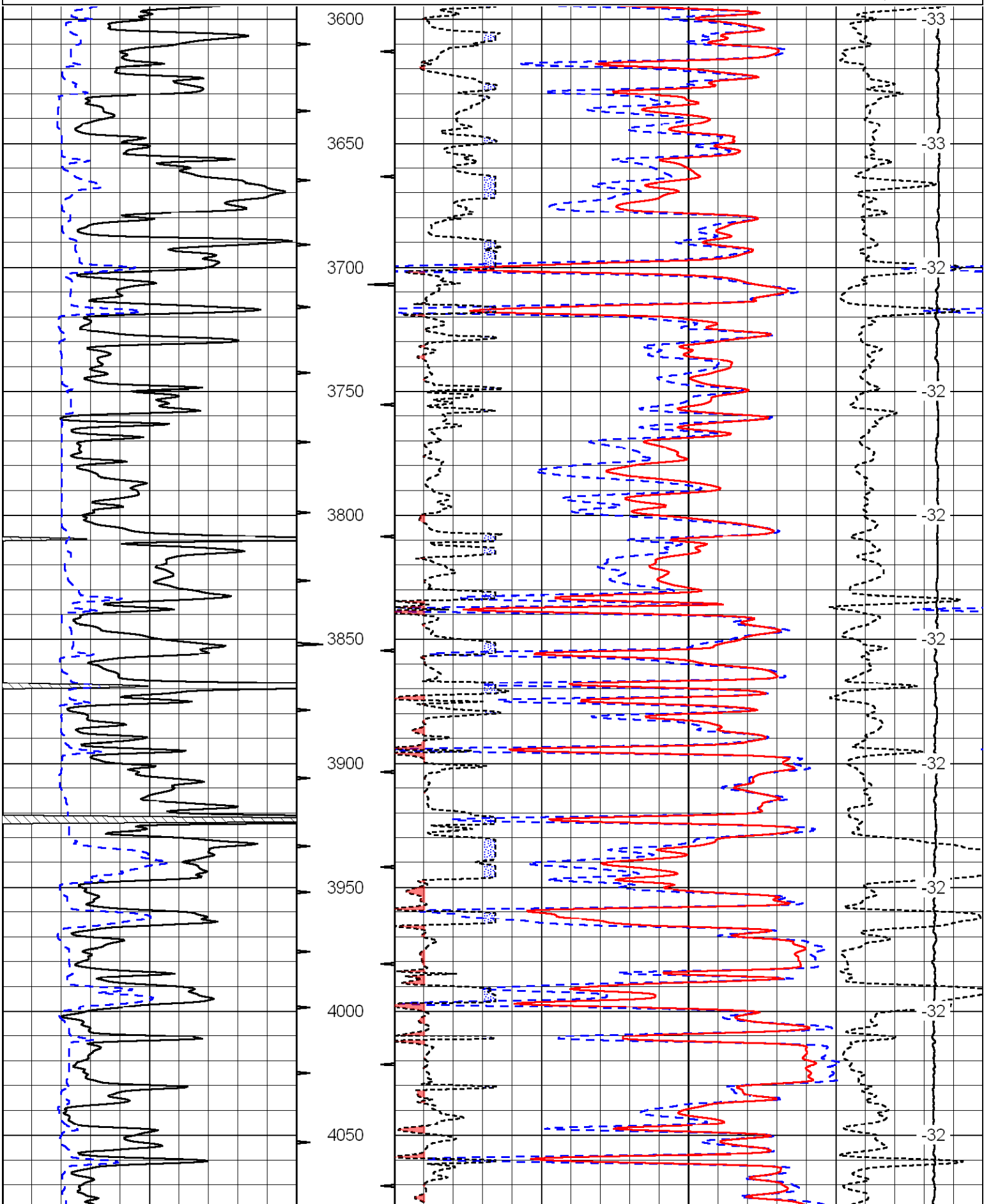
Thank you for using Log-Tech, Inc.  
 (785) 625-3858

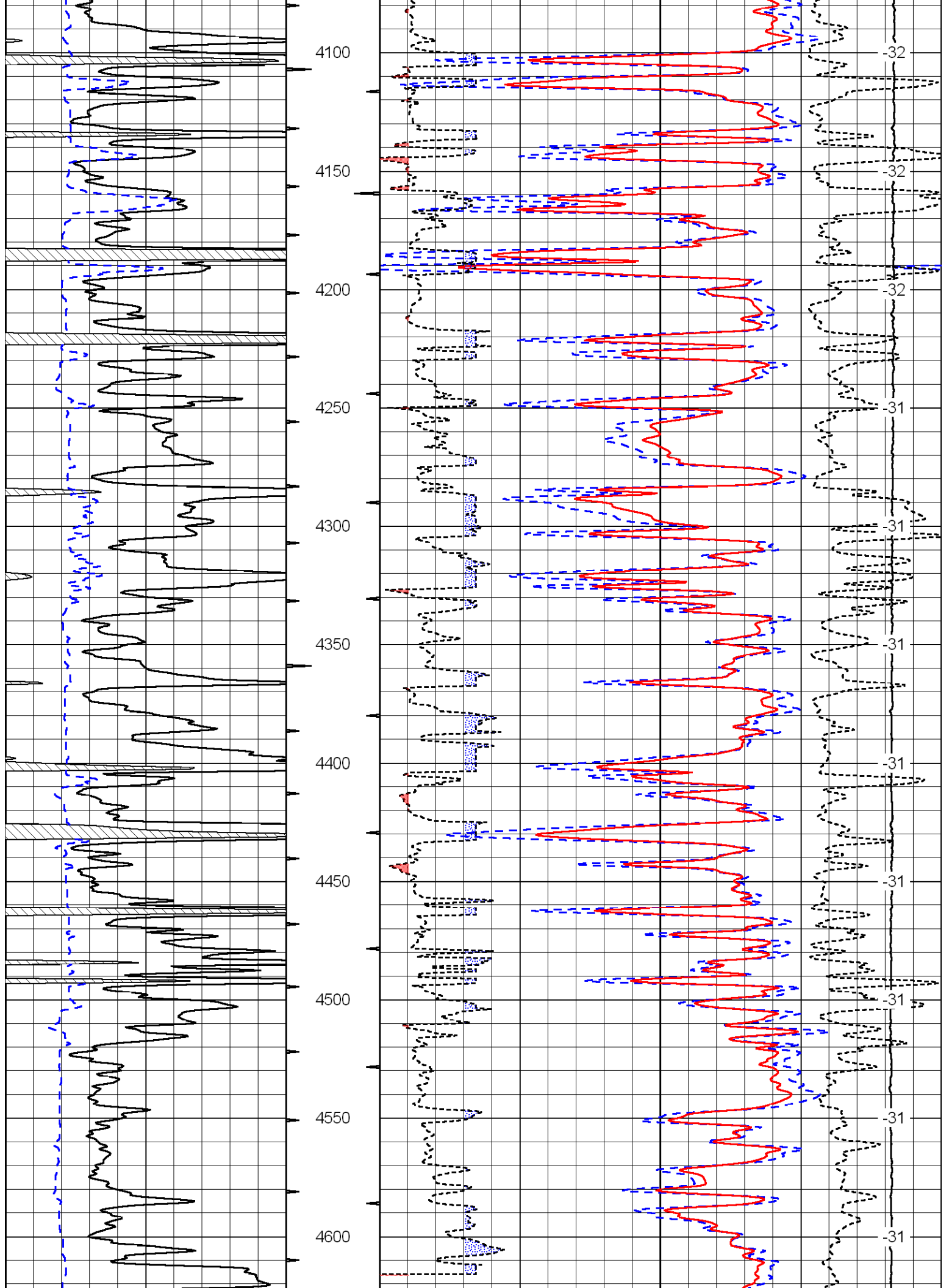
I 70, Campus Rd.  
 S 8 1/2, E 1/2,  
 S 1/2, E Into

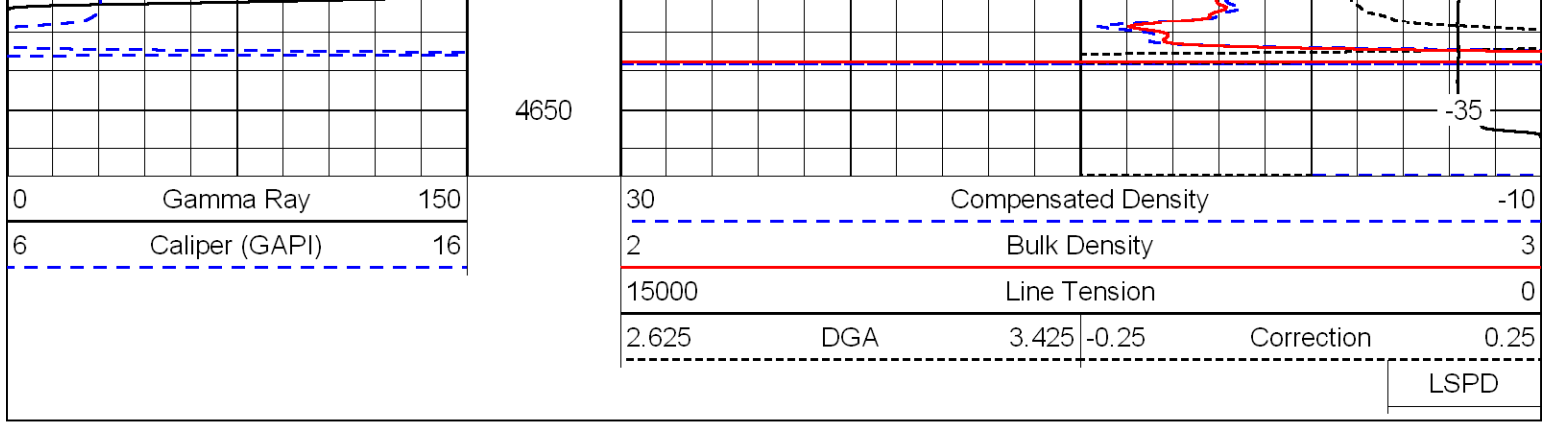
Database File: c:\warrior\data\h&m\_bonita springs no. 4\h&mhd.db  
 Dataset Pathname: dil/h&m2in  
 Presentation Format: cdl  
 Dataset Creation: Thu Nov 06 05:51:04 2008  
 Charted by: Depth in Feet scaled 1:600

0	Gamma Ray	150
6	Caliper (GAPI)	16

30	Compensated Density		-10
2	Bulk Density		3
15000	Line Tension		0
2.625	DGA	3.425	-0.25
Correction			0.25
LSPD			







Database File: c:\warrior\data\h&m\_bonita springs no. 4\h&mhd.db  
 Dataset Pathname: dil/h&m2in  
 Presentation Format: cndlspec  
 Dataset Creation: Thu Nov 06 05:51:04 2008  
 Charted by: Depth in Feet scaled 1:240

