



**SUPERIOR**  
Hays,  
Kansas

**MICRO  
LOG**

Company LOTUS OPERATING CO. LLC.  
Well #1 BRENNER  
Field WILDCAT  
County PRATT  
State KANSAS

Company LOTUS OPERATING COMPANY, LLC.  
Well #1 BRENNER  
Field WILDCAT  
County PRATT State KANSAS

Location: API #: 15-151-22345-0000  
2130' FNL & 990' FWL  
SEC 14 TWP 29S RGE 15W  
Permanent Datum GROUND LEVEL Elevation 1964  
Log Measured From KELLY BUSHING 13' A.G.L.  
Drilling Measured From KELLY BUSHING  
Other Services  
CDL/CNL/PE  
DIL/SONIC  
Elevation  
K.B. 1977  
D.F. 1975  
G.L. 1964

Date	2/5/10
Run Number	TWO
Depth Driller	4845
Depth Logger	4846
Bottom Logged Interval	4823
Top Log Interval	3700
Casing Driller	10 3/4"@300'
Casing Logger	298
Bit Size	7 7/8"
Type Fluid In Hole	CHEMICAL MUD
Density / Viscosity	9.1/44
pH / Fluid Loss	10.0/8.8
Source of Sample	FLOWLINE
Rm @ Meas. Temp	.650@71F
Rmf @ Meas. Temp	.488@71F
Rmc @ Meas. Temp	.780@71F
Source of Rmf / Rmc	MEASUREMENT
Rm @ BHT	.372@124F
Time Circulation Stopped	5 HOURS
Time Logger on Bottom	5:30 A.M.
Maximum Recorded Temperature	124F
Equipment Number	0836
Location	HAYS, KANSAS
Recorded By	JEFF LUEBBERS
Witnessed By	TIM HELLMAN

<<< Fold Here >>>

All interpretations are opinions based on inferences from electrical or other measurements and we cannot and do not guarantee the accuracy or correctness of any interpretation, and we shall not, except in the case of gross or willful negligence on our part, be liable or responsible for any loss, costs, damages, or expenses incurred or sustained by anyone resulting from any interpretation made by any of our officers, agents or employees. These interpretations are also subject to our general terms and conditions set out in our current Price Schedule.

**Comments**

THANK YOU FOR USING SUPERIOR WELL SERVICE HAYS, KANSAS (785) 628-6395  
DIRECTIONS  
CULLISON, KS., 2W. ON HWY 54 TO "RD. 110", 7S., E. INTO

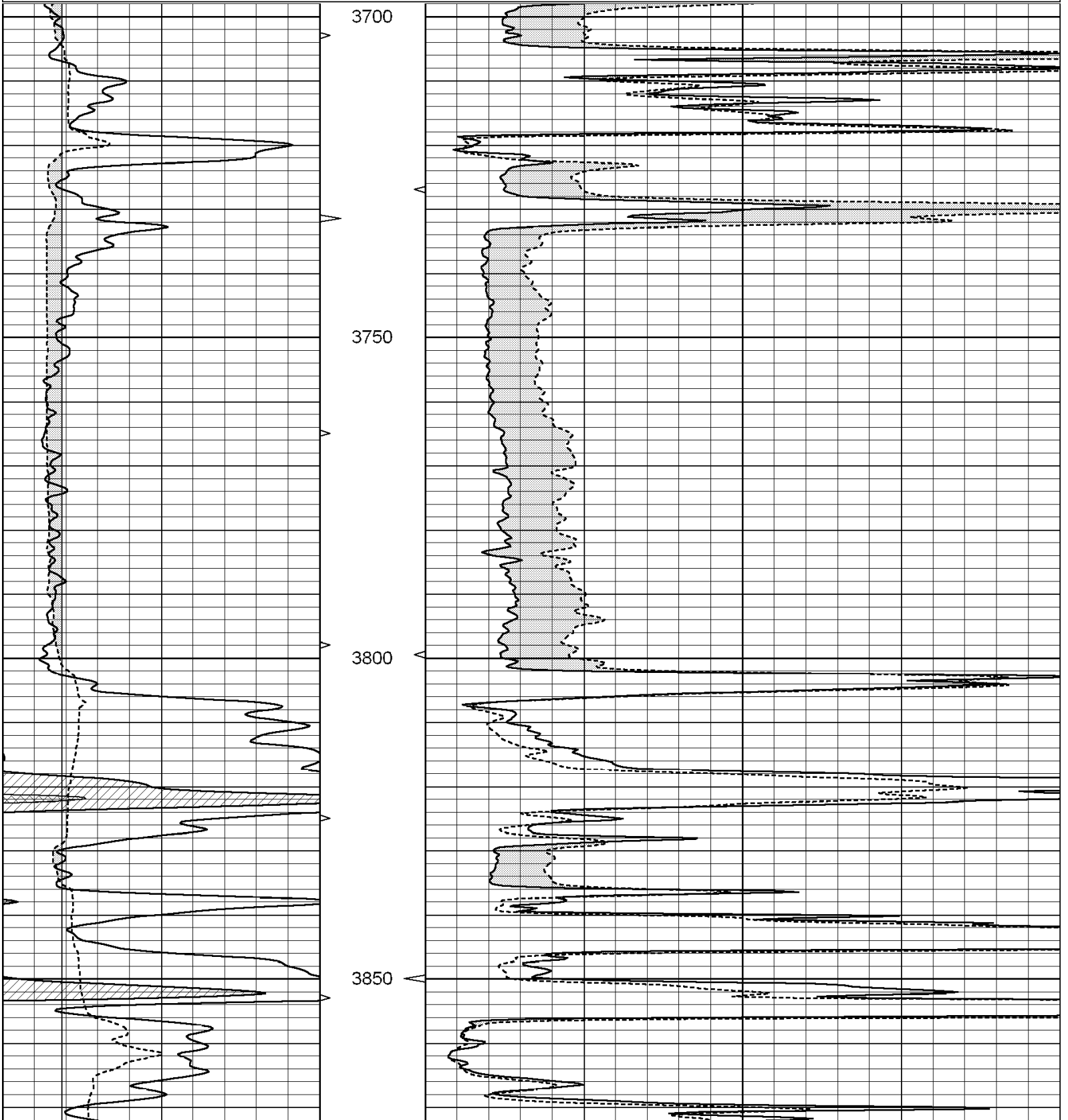


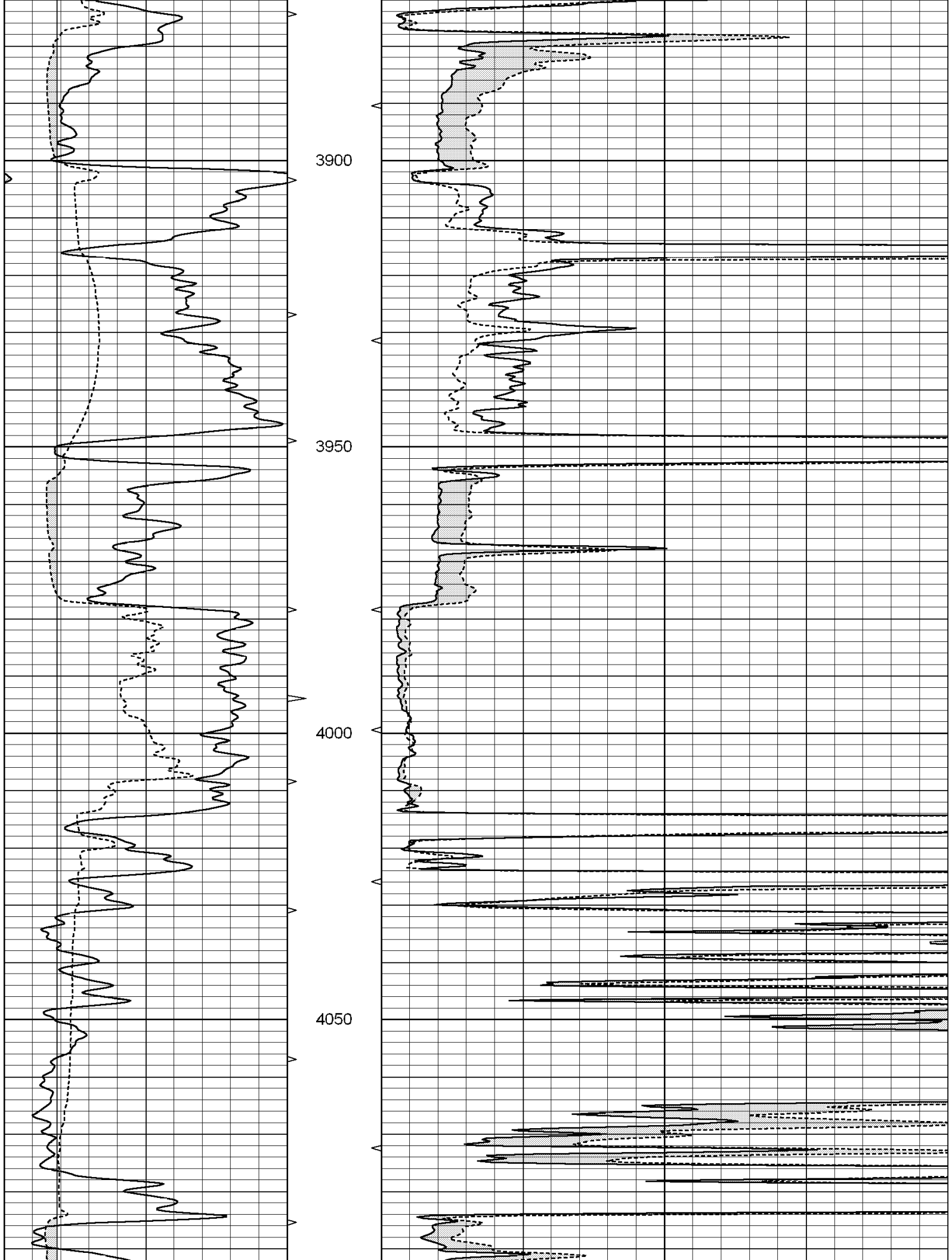
**SUPERIOR**  
Hays,  
Kansas

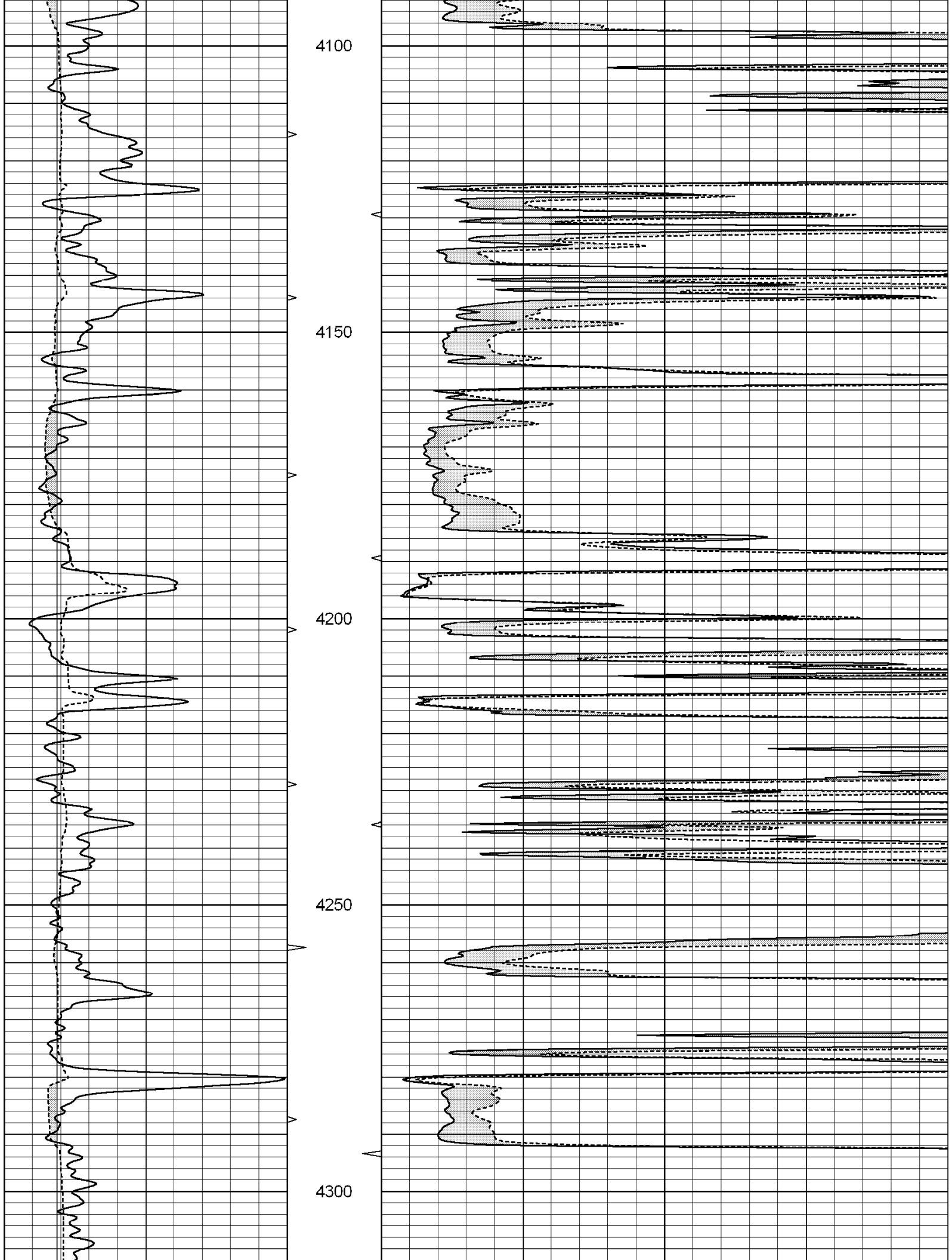
**MAIN SECTION**

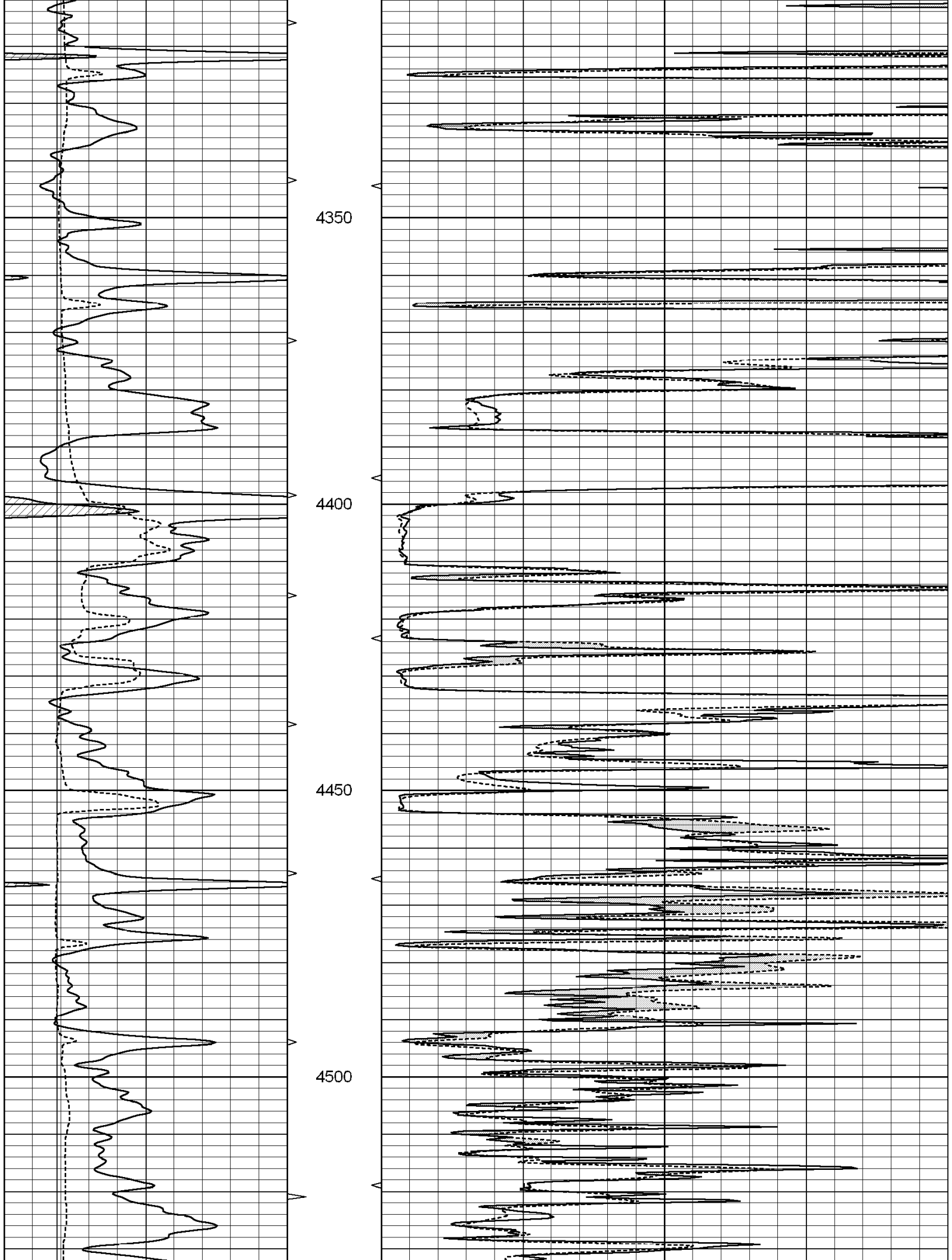
Database File: 004715pe.db  
 Dataset Pathname: pass8.1  
 Presentation Format: micro  
 Dataset Creation: Fri Feb 05 11:45:15 2010  
 Charted by: Depth in Feet scaled 1:240

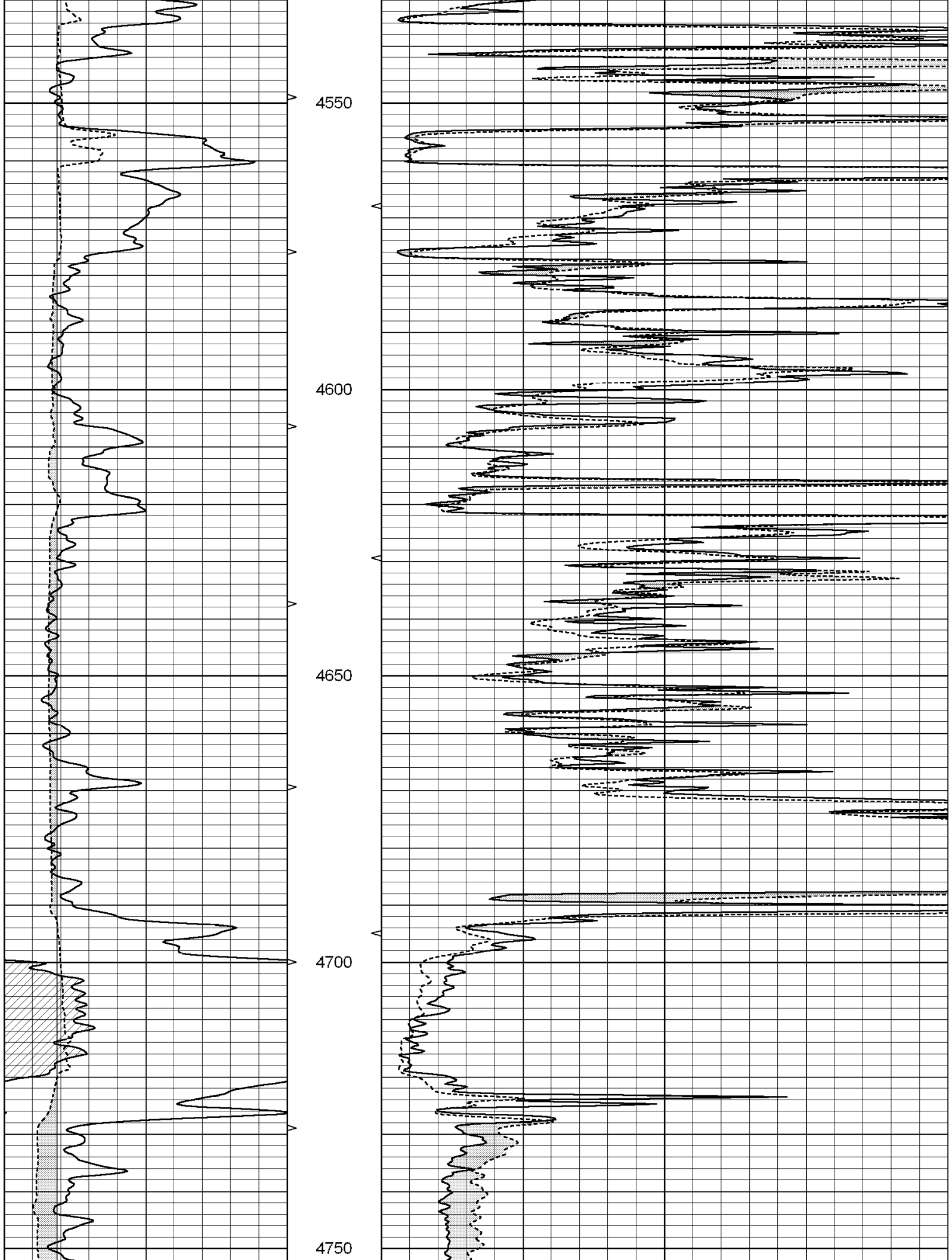
0	GAMMA RAY (GAPI)	150	ABHV	0	MEL1.5 (Ohm-m)	40
6	CALIPER (in)	16	10 (ft3) 0	0	MEL2.0 (Ohm-m)	40
			TBHV			
			0 (ft3) 10			

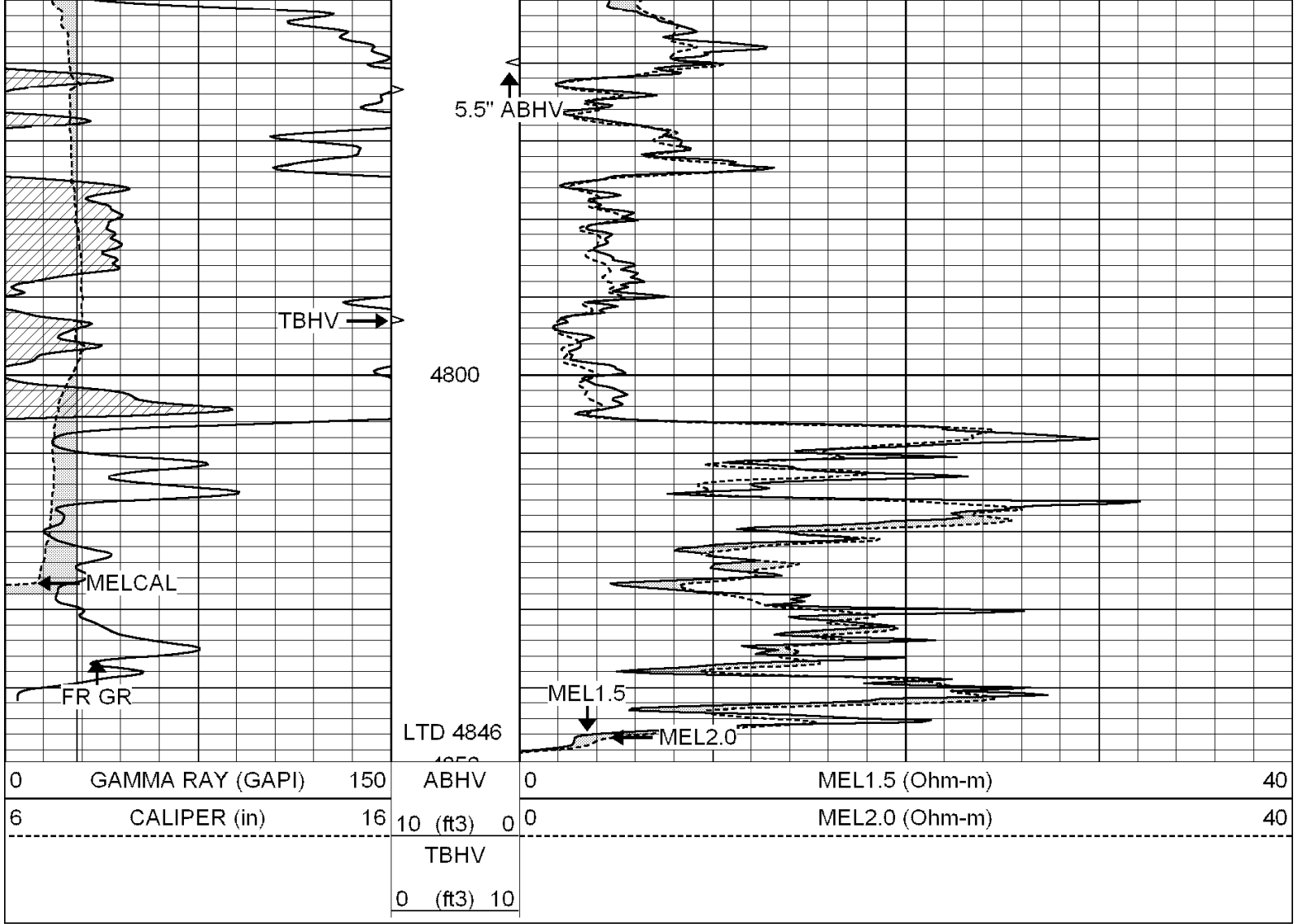










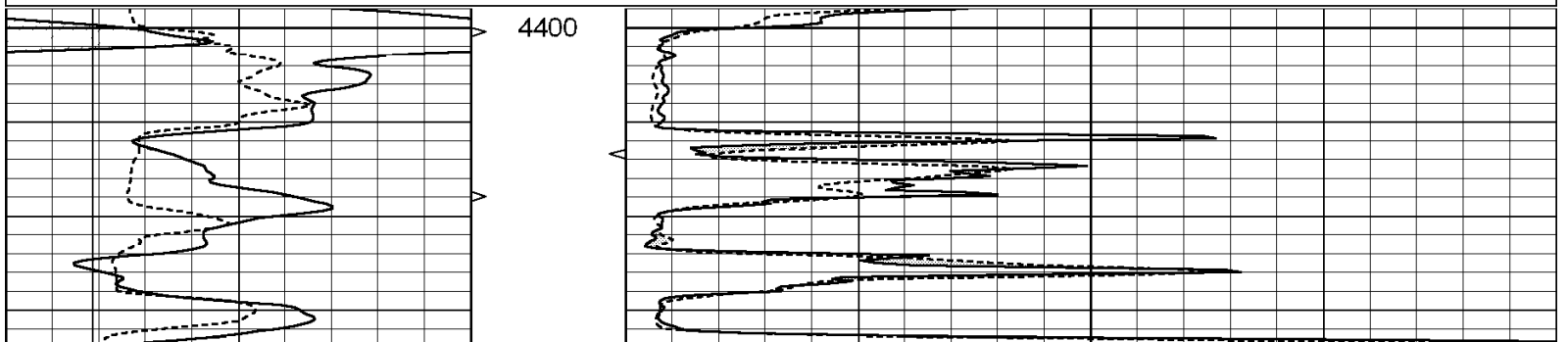


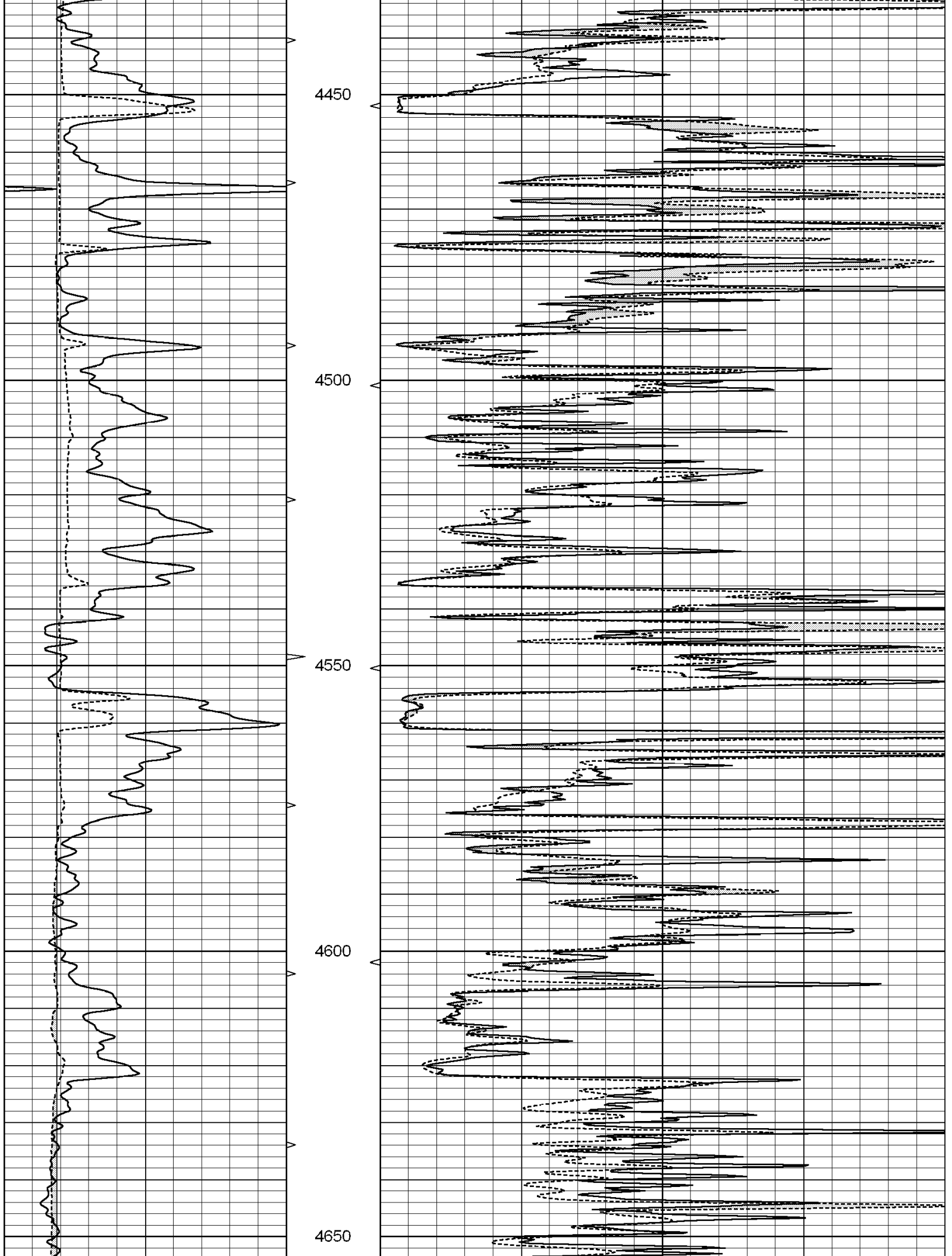
SUPERIOR  
Hays,  
Kansas

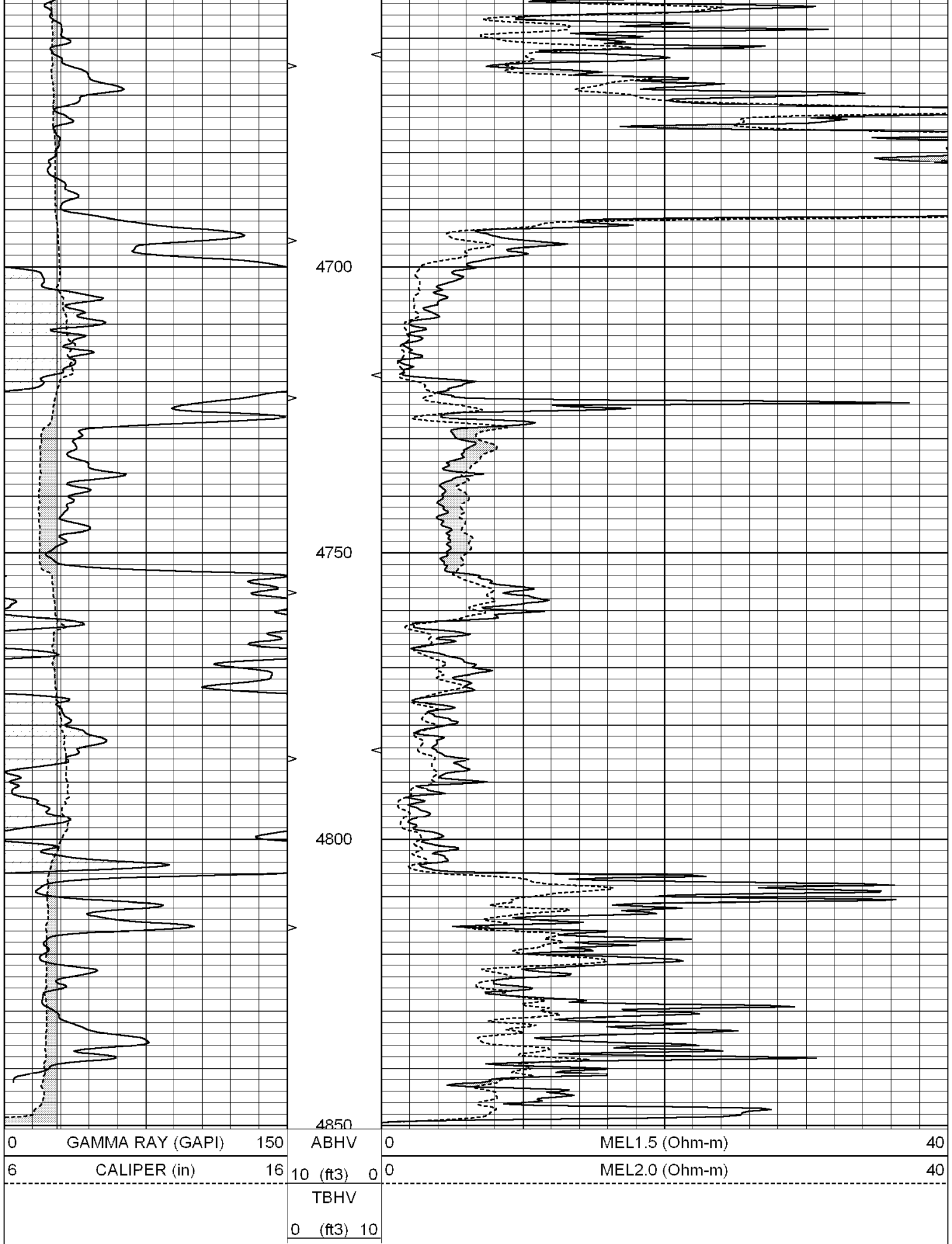
# REPEAT SECTION

Database File: 004715pe.db  
 Dataset Pathname: pass7.3  
 Presentation Format: micro  
 Dataset Creation: Fri Feb 05 11:31:22 2010  
 Charted by: Depth in Feet scaled 1:240

0	GAMMA RAY (GAPI)	150	ABHV	0	MEL1.5 (Ohm-m)	40
6	CALIPER (in)	16	10 (ft3) 0	0	MEL2.0 (Ohm-m)	40
			TBHV			
			0 (ft3) 10			







Calibration Report

Database File: 004715pe.db  
 Dataset Pathname: pass8.1  
 Dataset Creation: Fri Feb 05 11:45:15 2010

MICRO Calibration Report

Serial Number:	MICRO5	
Tool Model:	PROBE	
Performed:	Fri Feb 05 11:06:55 2010	
Caliper Calibration:	Gain=3.335	Offset=-0.334
	Low Cal	High Cal
References	6.300	14.000
Readings	1.989	4.299
1.5" Calibration:	Gain=30.000	Offset=0.000
	Low Cal	High Cal
References	0.000	20.000
Readings	0.011	0.994
2" Calibration:	Gain=51.000	Offset=-1.100
	Low Cal	High Cal
References	0.000	20.000
Readings	0.015	0.903

Gamma Ray Calibration Report

Serial Number:	GR3	
Tool Model:	OPEN	
Performed:	Fri Feb 05 11:02:06 2010	
Calibrator Value:	200.0	GAPI
Background Reading:	3.0	cps
Calibrator Reading:	186.0	cps
Sensitivity:	0.9500	GAPI/cps