



Dual Compensated
Porosity Log

DIGITAL LOG (785) 625-3858

API No.	15-083-21,610-00-00	
Company	American Warrior, Inc.	
Well	Webster #1-24	
Field	Hanston-Oppy East	
County	Hodgeman	
State	Kansas	
Location	140' FNL & 1598' FEL	
Sec: 24	Twp: 22S	Rge: 22W
Permanent Datum	Ground Level	Elevation 2149
Log Measured From	Kelly Bushing	11 Ft. Above Perm. Datum
Drilling Measured From	Kelly Bushing	
		Other Services DIL MEL / BHCS
		Elevation K.B. 2160 D.F. 2149 G.L. 2149

Date	10/4/2009	
Run Number	One	
Type Log	CNL / CDL	
Depth Driller	4409	
Depth Logger	4410	
Bottom Logged Interval	4407	
Top Logged Interval	2000	
Type Fluid In Hole	Chemical	
Salinity, PPM CL	6,300	
Density	9.5	
Level	Full	
Max. Rec. Temp. F	120	
Operating Rig Time	5 1/2 Hours	
Equipment -- Location	4 Hays	
Recorded By	T. Martin	
Witnessed By	Jason Alm	

Run No	Bit	Borehole Record		Casing Record	
		From	To	From	To
1	12.25	00	1315	8.625	24#
2	7.875	1315	4409		

<<< Fold Here >>>

All interpretations are opinions based on inferences from electrical or other measurements and we cannot and do not guarantee the accuracy or correctness of any interpretation, and we shall not, except in the case of gross or willful negligence on our part, be liable or responsible for any loss, costs, damages, or expenses incurred or sustained by anyone resulting from any interpretation made by any of our officers, agents or employees. These interpretations are also subject to our general terms and conditions set out in our current Price Schedule.

Comments

Thank you for using Log-Tech, Inc.
(785) 625-3858

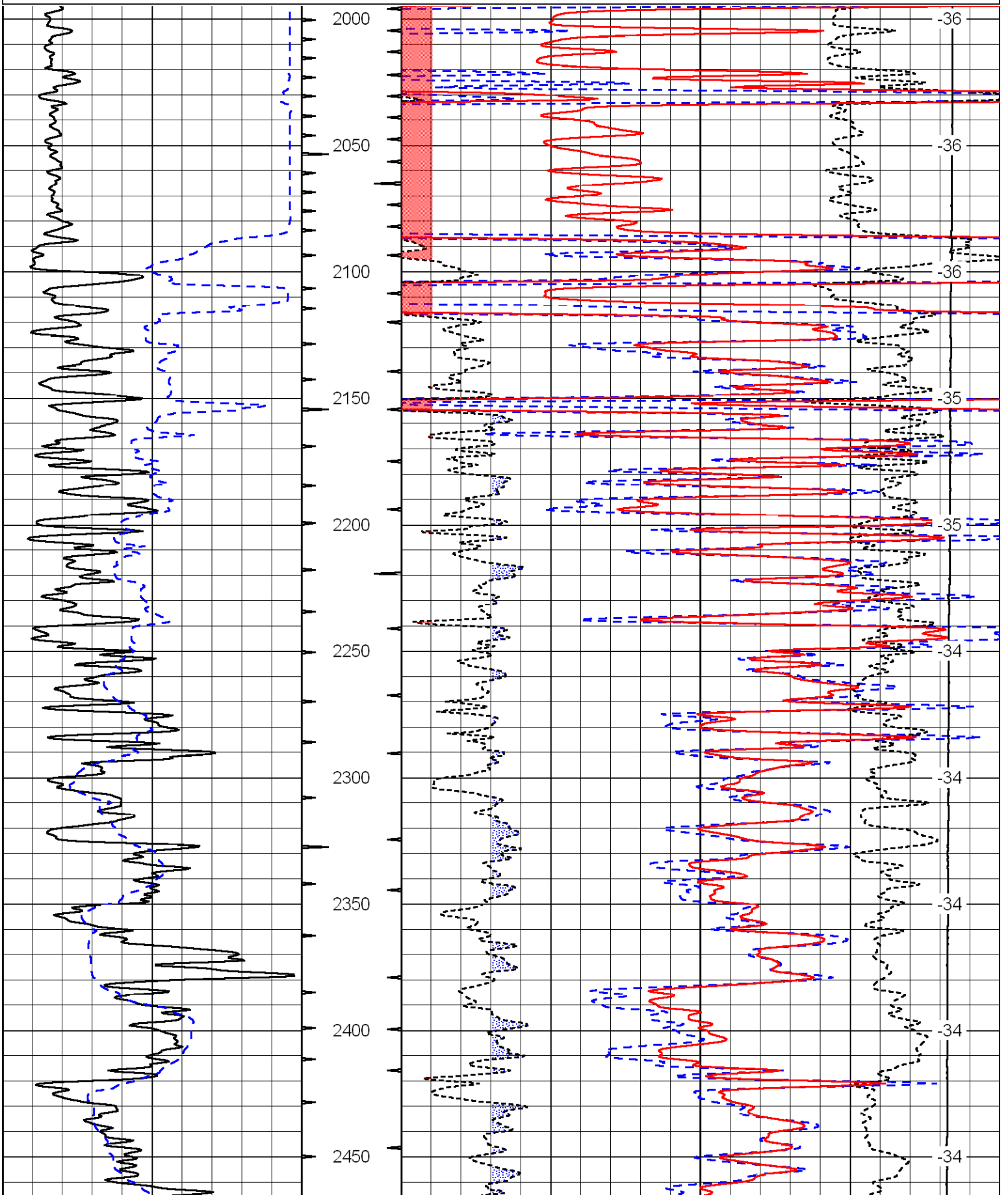
Hanston 2 E to 230 Rd, 1 S to stop sign, N into

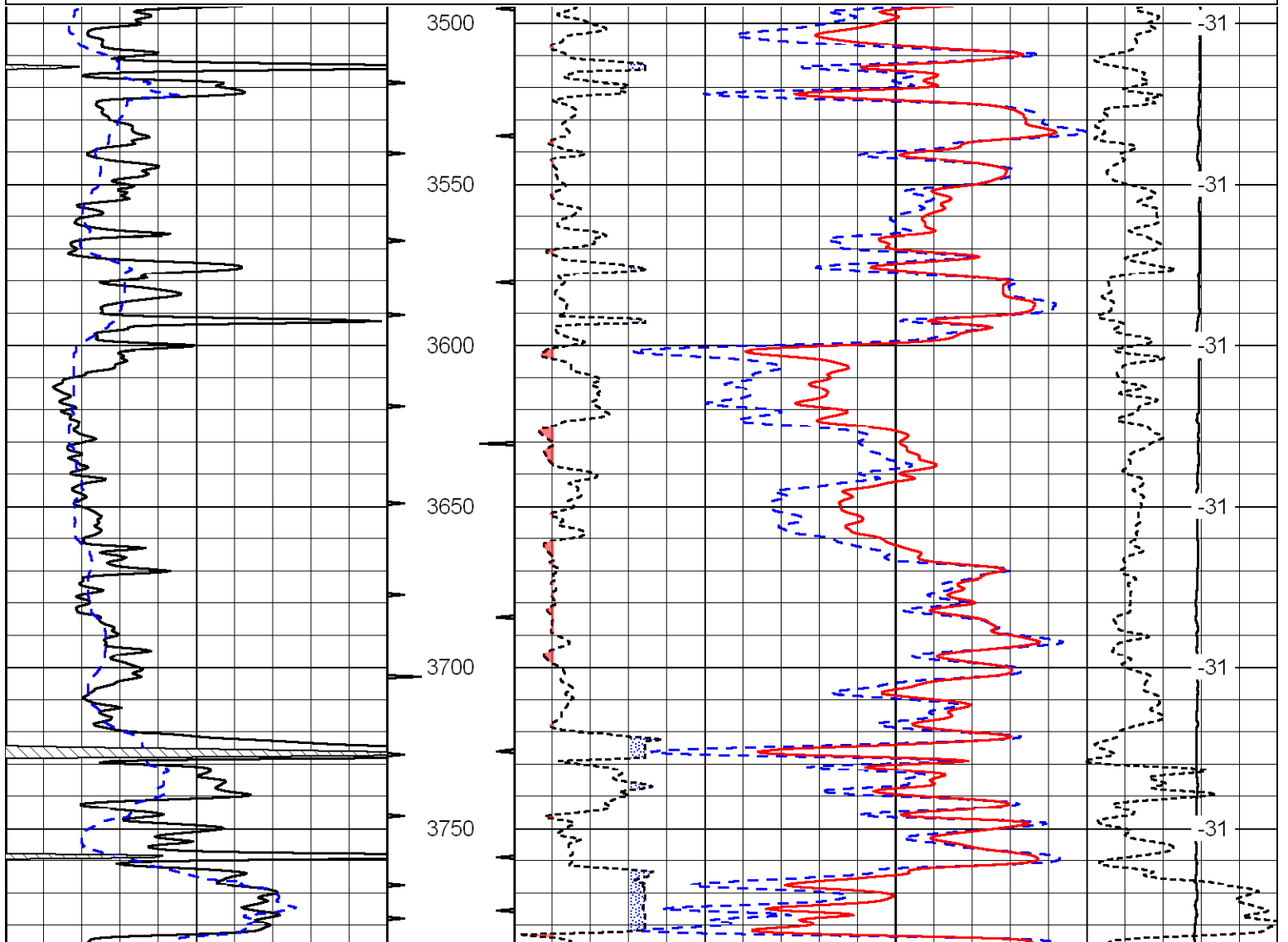
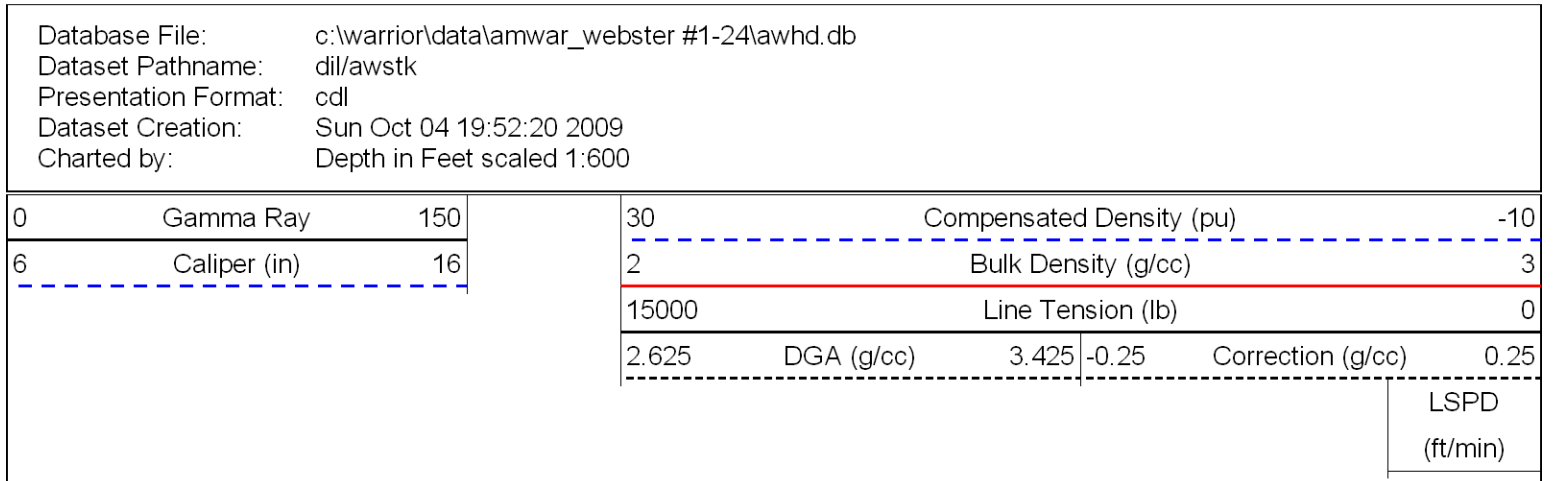
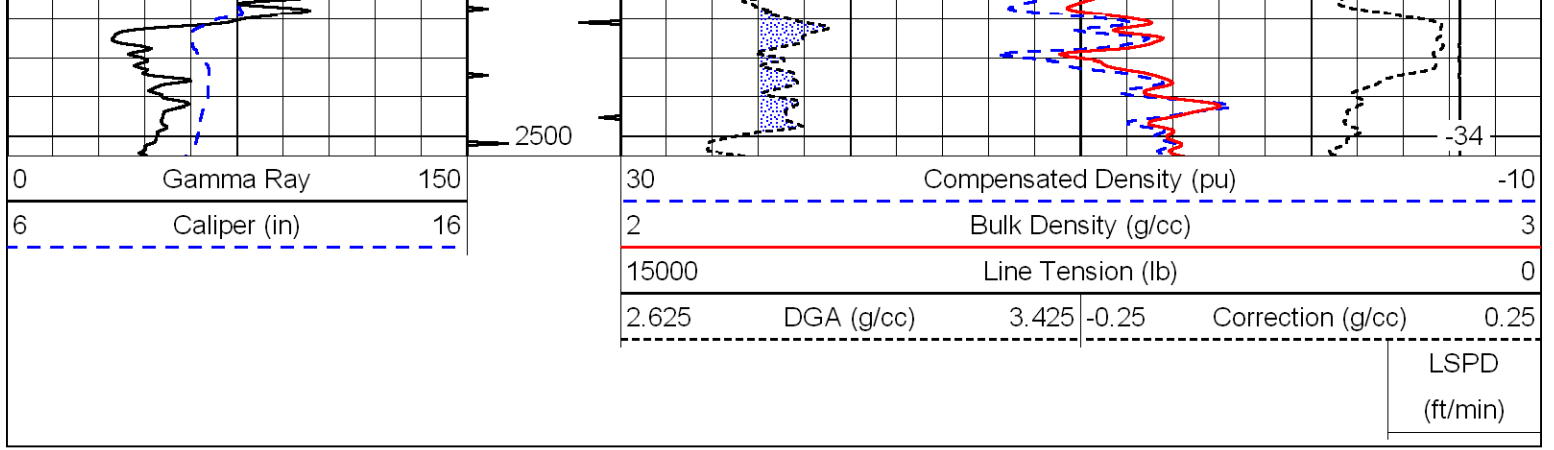
Database File: c:\warrior\data\amwar_webster #1-24\awhd.db
 Dataset Pathname: dil\awstc
 Presentation Format: cdl
 Dataset Creation: Sun Oct 04 19:52:20 2009
 Charted by: Depth in Feet scaled 1:600

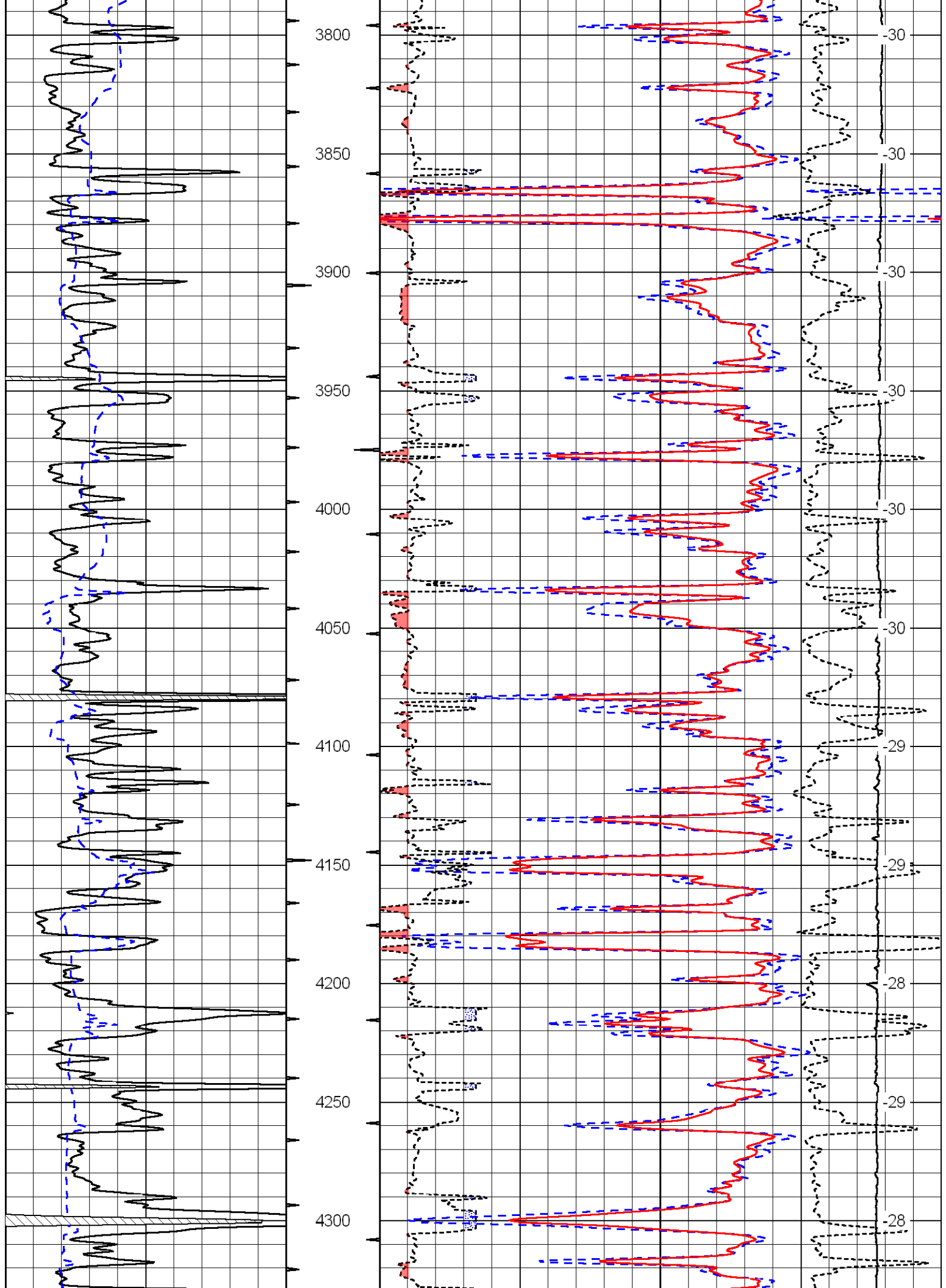
0	Gamma Ray	150
6	Caliper (in)	16

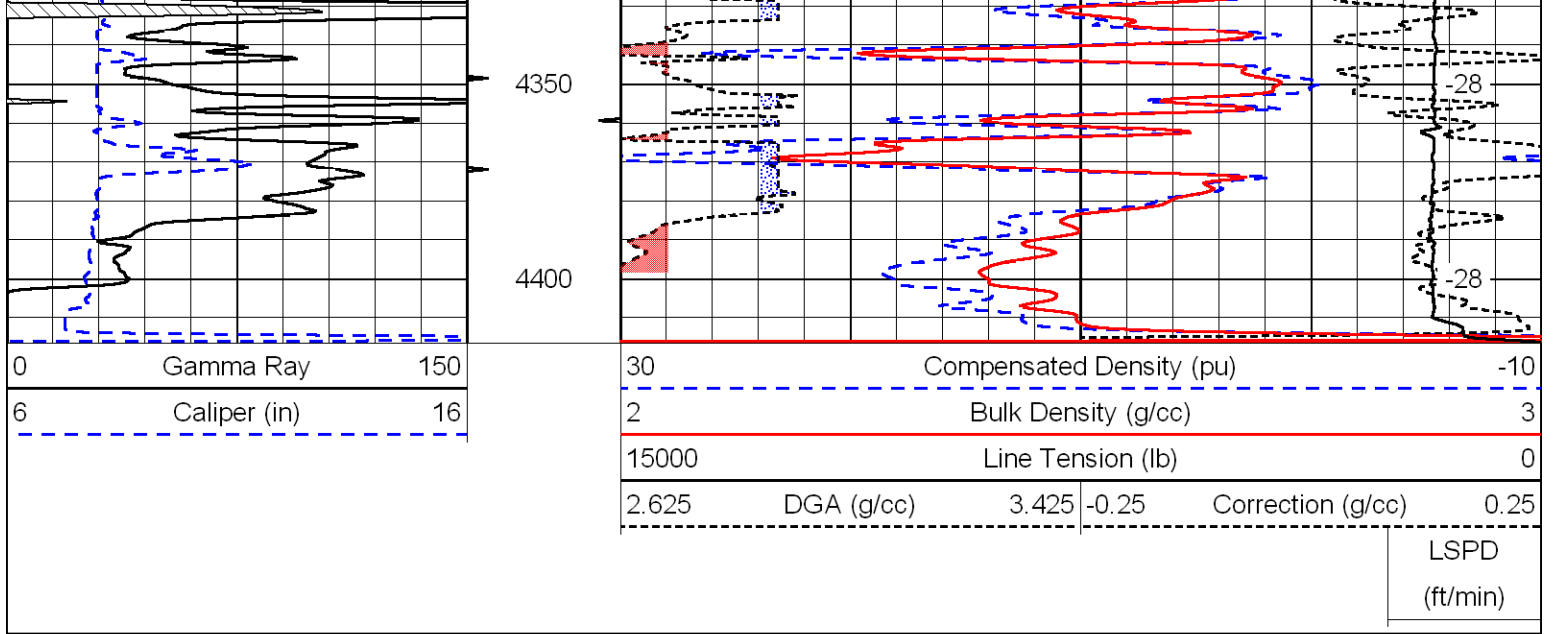
30	Compensated Density (pu)		-10
2	Bulk Density (g/cc)		3
15000	Line Tension (lb)		0
2.625	DGA (g/cc)	3.425	-0.25
	Correction (g/cc)		0.25

LSPD
(ft/min)

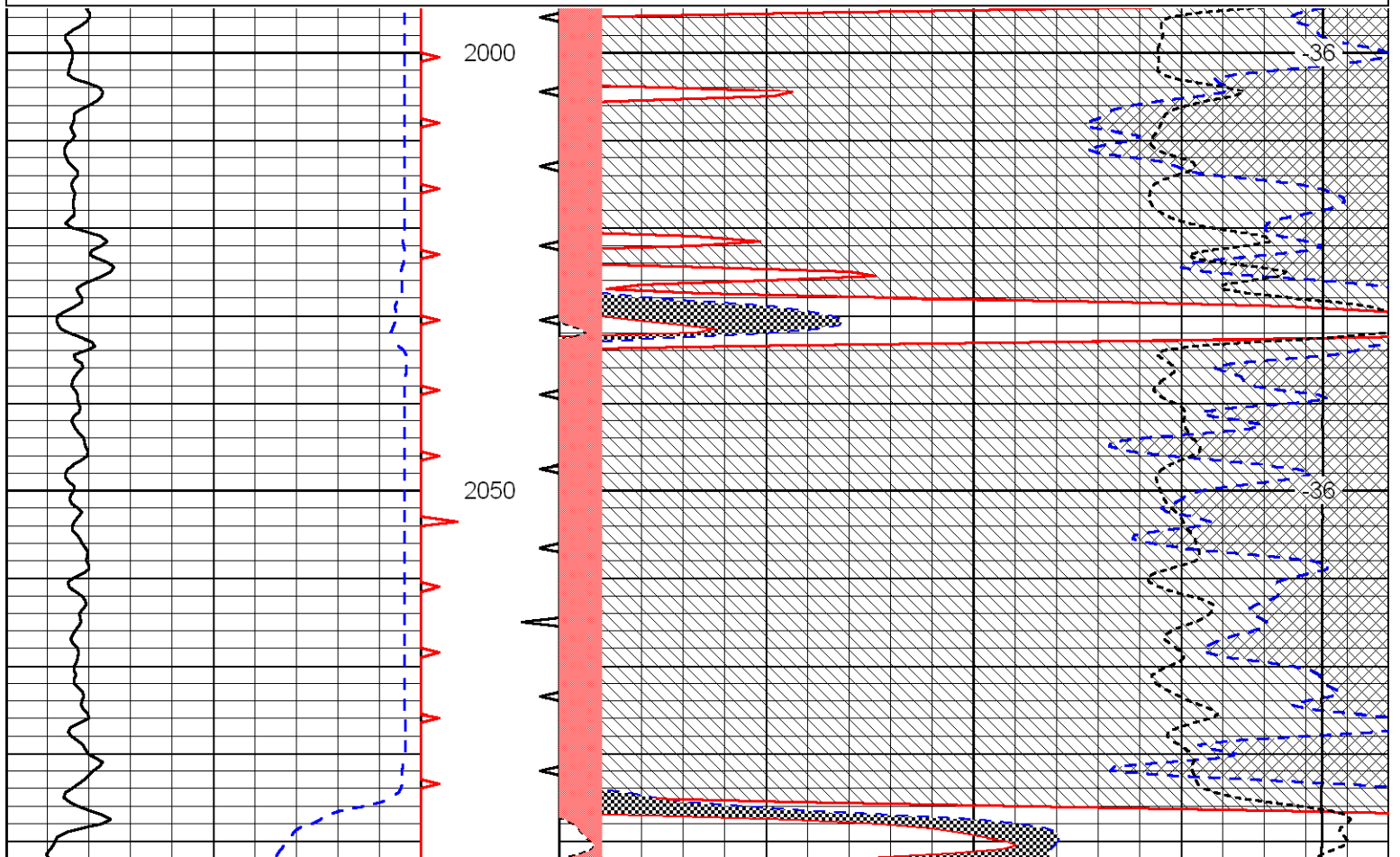
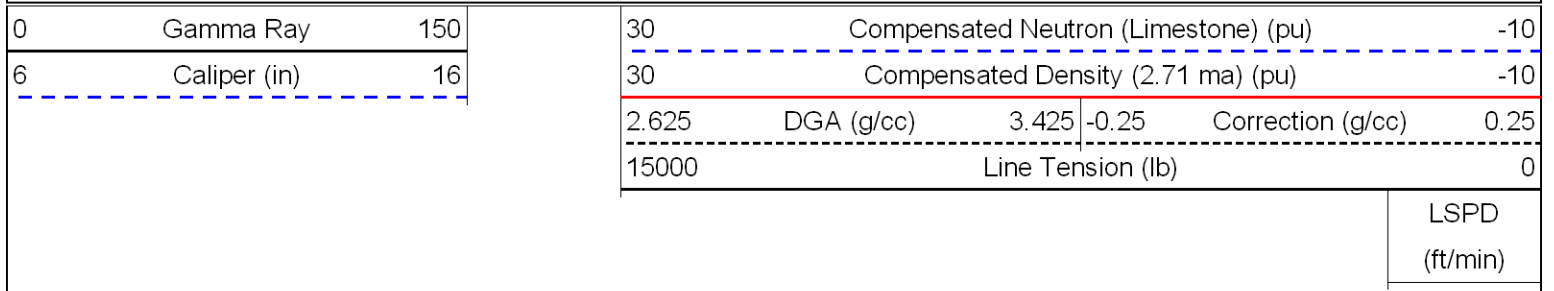


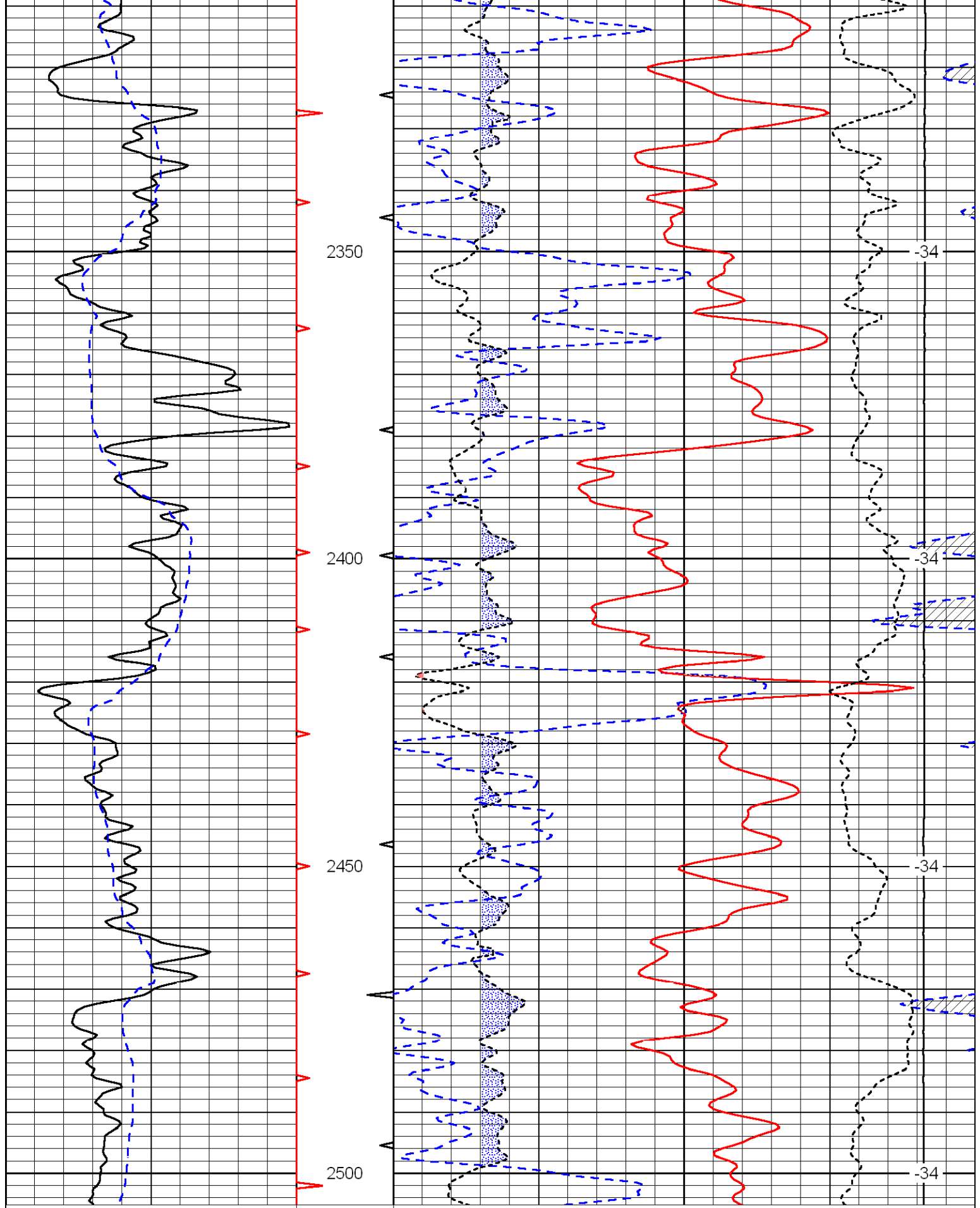






Database File: c:\warrior\data\amwar_webster #1-24\awhd.db
 Dataset Pathname: dil/awstk
 Presentation Format: cndlspec
 Dataset Creation: Sun Oct 04 19:52:20 2009
 Charted by: Depth in Feet scaled 1:240





0	Gamma Ray	150
6	Caliper (in)	16

30	Compensated Neutron (Limestone) (pu)	-10
30	Compensated Density (2.71 ma) (pu)	-10
2.625	DGA (g/cc)	3.425
-0.25	Correction (g/cc)	0.25
15000	Line Tension (lb)	0

Database File: c:\warrior\data\amwar_webster #1-24\awhd.db
 Dataset Pathname: dil\awstk
 Presentation Format: cndlspec
 Dataset Creation: Sun Oct 04 19:52:20 2009
 Charted by: Depth in Feet scaled 1:240

0	Gamma Ray	150
6	Caliper (in)	16

30	Compensated Neutron (Limestone) (pu)			-10	
30	Compensated Density (2.71 ma) (pu)			-10	
2.625	DGA (g/cc)	3.425	-0.25	Correction (g/cc)	0.25
15000	Line Tension (lb)			0	

