



Microresistivity Log

DIGITAL LOG (785) 625-3858

15-179-21221-00-00

API No.

Company **A&A Production**

Well **Breeden No 1**

Field **Unknown**

County **Sheridan** State

Kansas

Location

**NE - SW - SW - SE
350' FSL & 2290' FEL**

Other Services
CNL/CDL
DIL

Sec: **25**

Twp: **9 S**

Rge: **26 W**

Elevation

Permanent Datum **Ground Level**

Elevation **2619**

Log Measured From **Kelly Bushing**

5 Ft. Above Perm. Datum

Drilling Measured From **Kelly Bushing**

K.B. **2624**
D.F. **2619**
G.L. **2619**

Date **1/27/2009**

Run Number **Two**

Depth Driller **4150**

Depth Logger **4156**

Bottom Logged Interval **4155**

Top Log Interval **3500**

Casing Driller **8.625 @ 233**

Casing Logger **233**

Bit Size **7.875**

Type Fluid in Hole **Chemical**

Salinity, ppm CL **6,000**

Density / Viscosity **9.3 73**

pH / Fluid Loss **7.5 10.6**

Source of Sample **Flowline**

Rm @ Meas. Temp **0.90 @ 50**

Rmf @ Meas. Temp **0.68 @ 50**

Rmc @ Meas. Temp **1.22 @ 50**

Source of Rmf / Rmc **Charts**

Rm @ BHT **0.38 @ 118**

Operating Rig Time **4 Hours**

Max Rec. Temp. F **118**

Equipment Number **15**

Location **Hays**

Recorded By **B. Becker**

Witnessed By **Mark Torr**

<<< Fold Here >>>

All interpretations are opinions based on inferences from electrical or other measurements and we cannot and do not guarantee the accuracy or correctness of any interpretation, and we shall not, except in the case of gross or willful negligence on our part, be liable or responsible for any loss, costs, damages, or expenses incurred or sustained by anyone resulting from any interpretation made by any of our officers, agents or employees. These interpretations are also subject to our general terms and conditions set out in our current Price Schedule.

Comments

Thank you for using Log-Tech, Inc.
(785) 625-3858

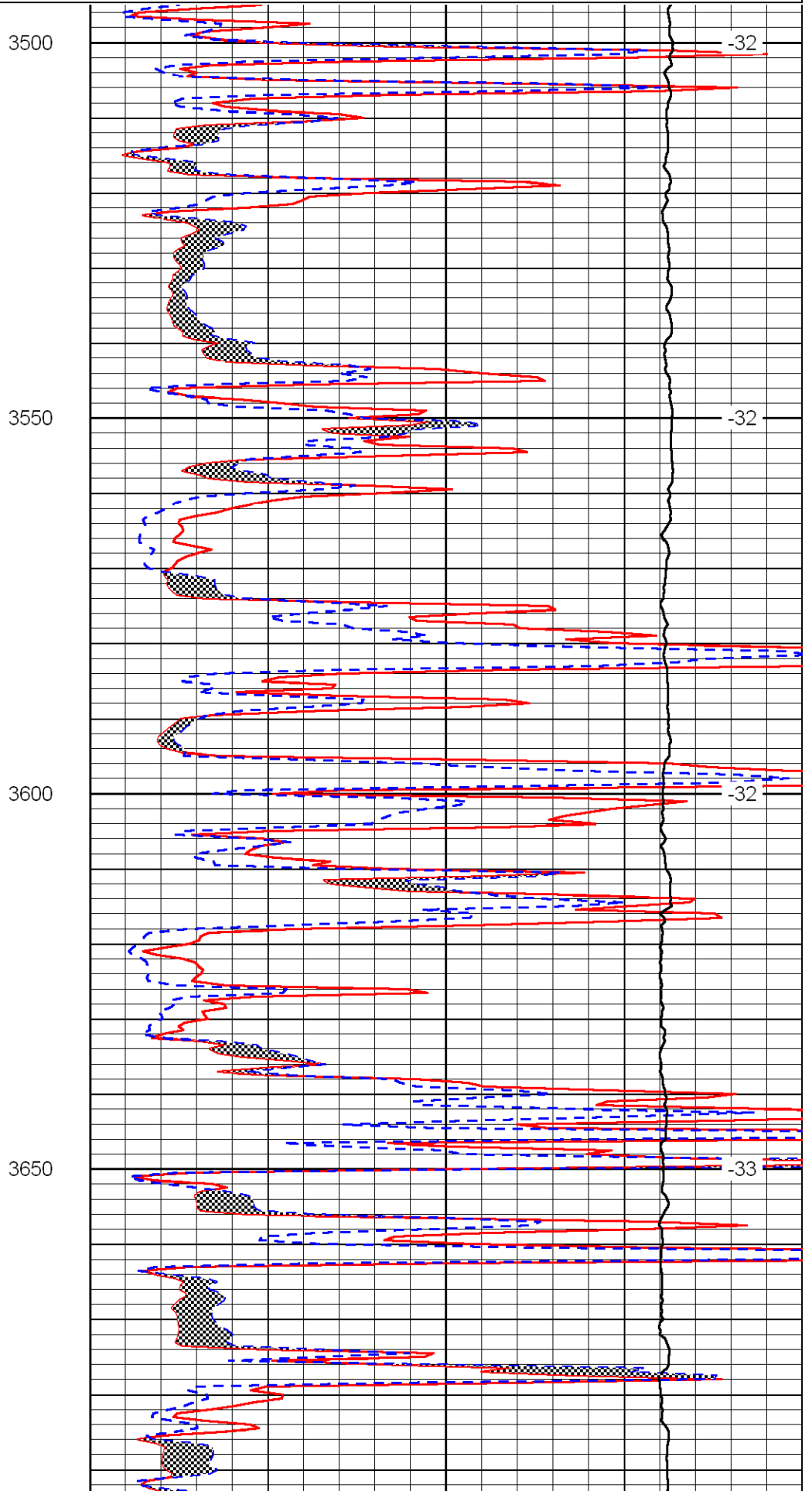
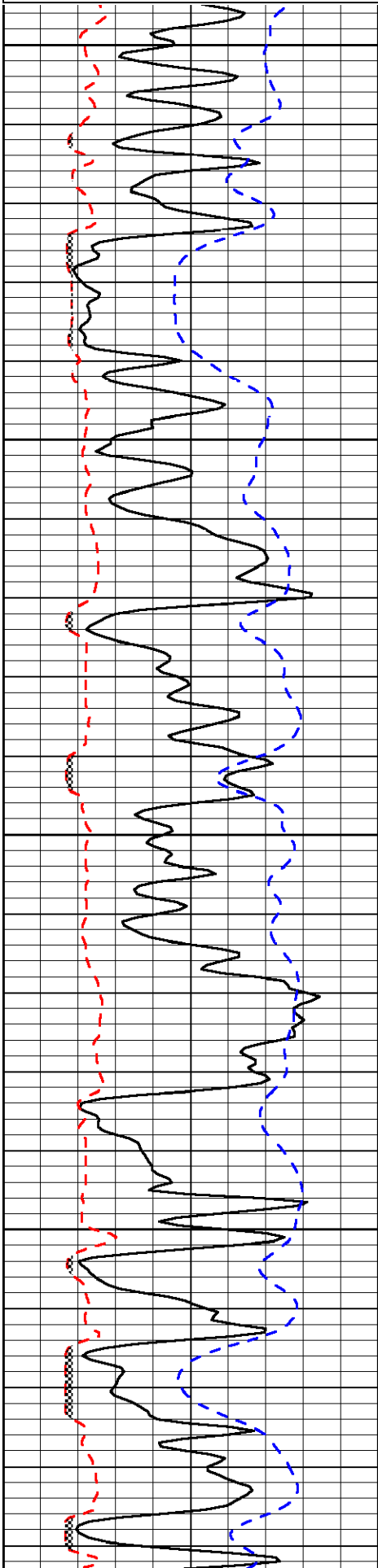
Wakeeney, Ks; North to Red Line Rd;
West to "STOP" sign (St. Peter blacktop);
3-1/2 West, North Into

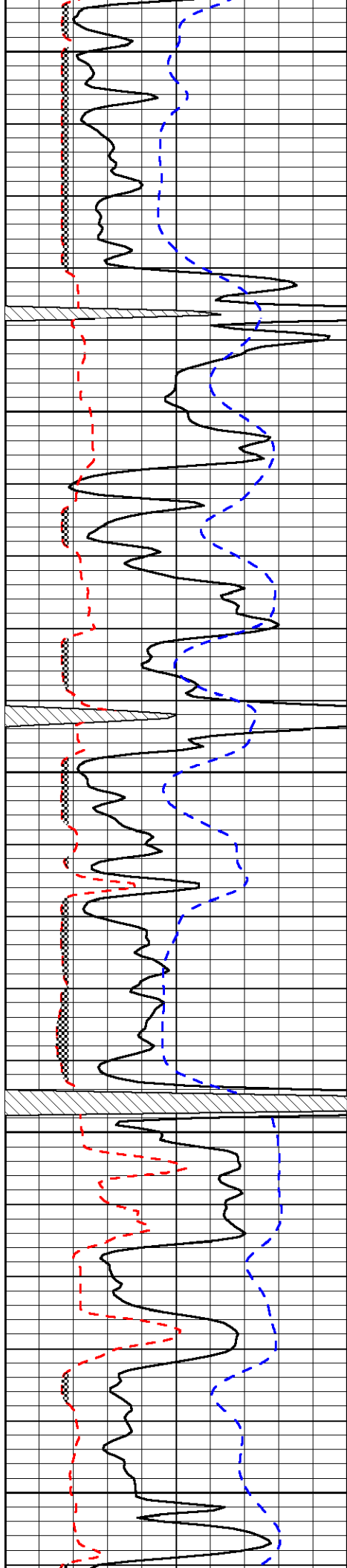
Database File: andersonhd.db
Dataset Pathname: Breeden1/DIL/@00000e60
Presentation Format: micro
Dataset Creation: Tue Jan 27 22:03:55 2009
Charted by: Depth in Feet scaled 1:240

0	Gamma Ray	150
6	Micro Log Caliper (GAPI)	16
-200	SP	0

0	Micro Inverse 1 X 1	40
0	Micro Normal 2"	40
10000	Line Weight	0

LSPD





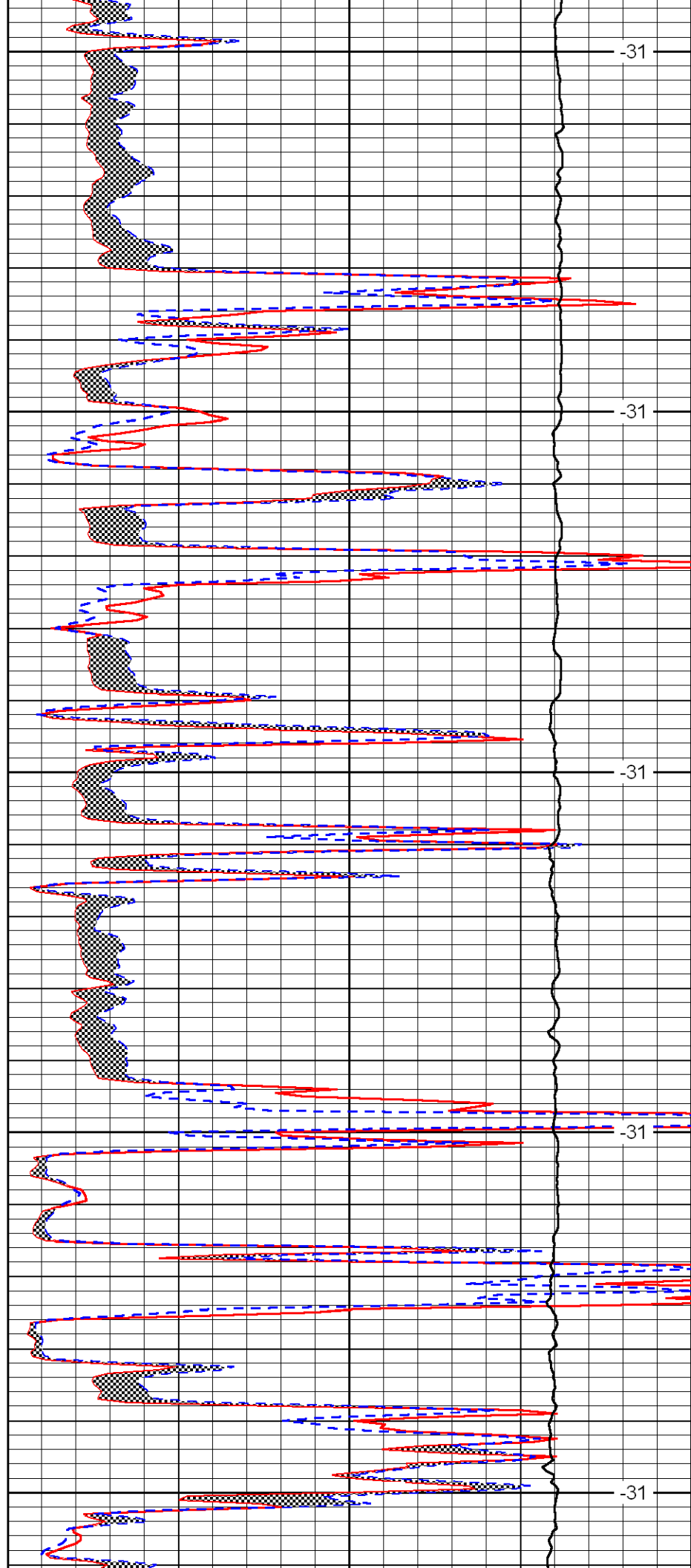
3700

3750

3800

3850

3900



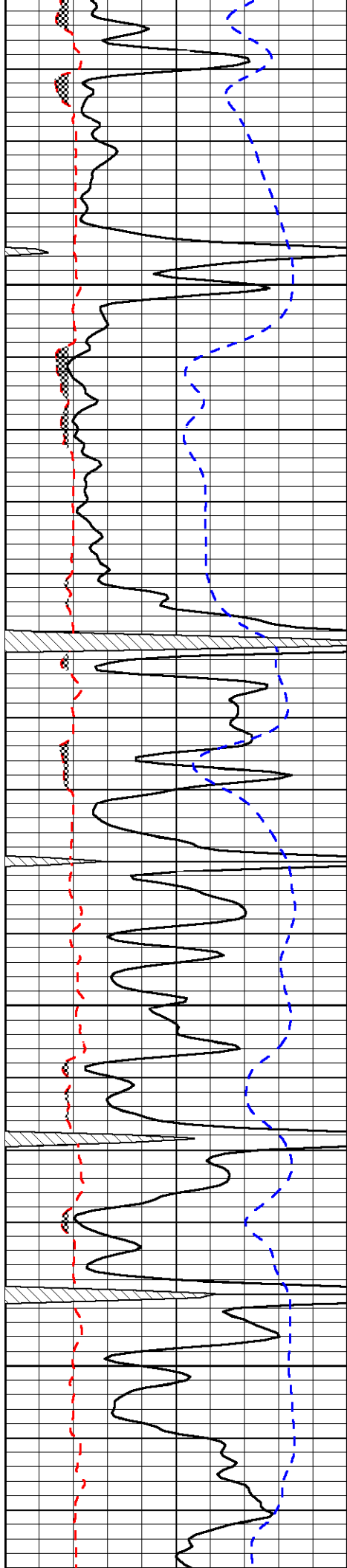
-31

-31

-31

-31

-31

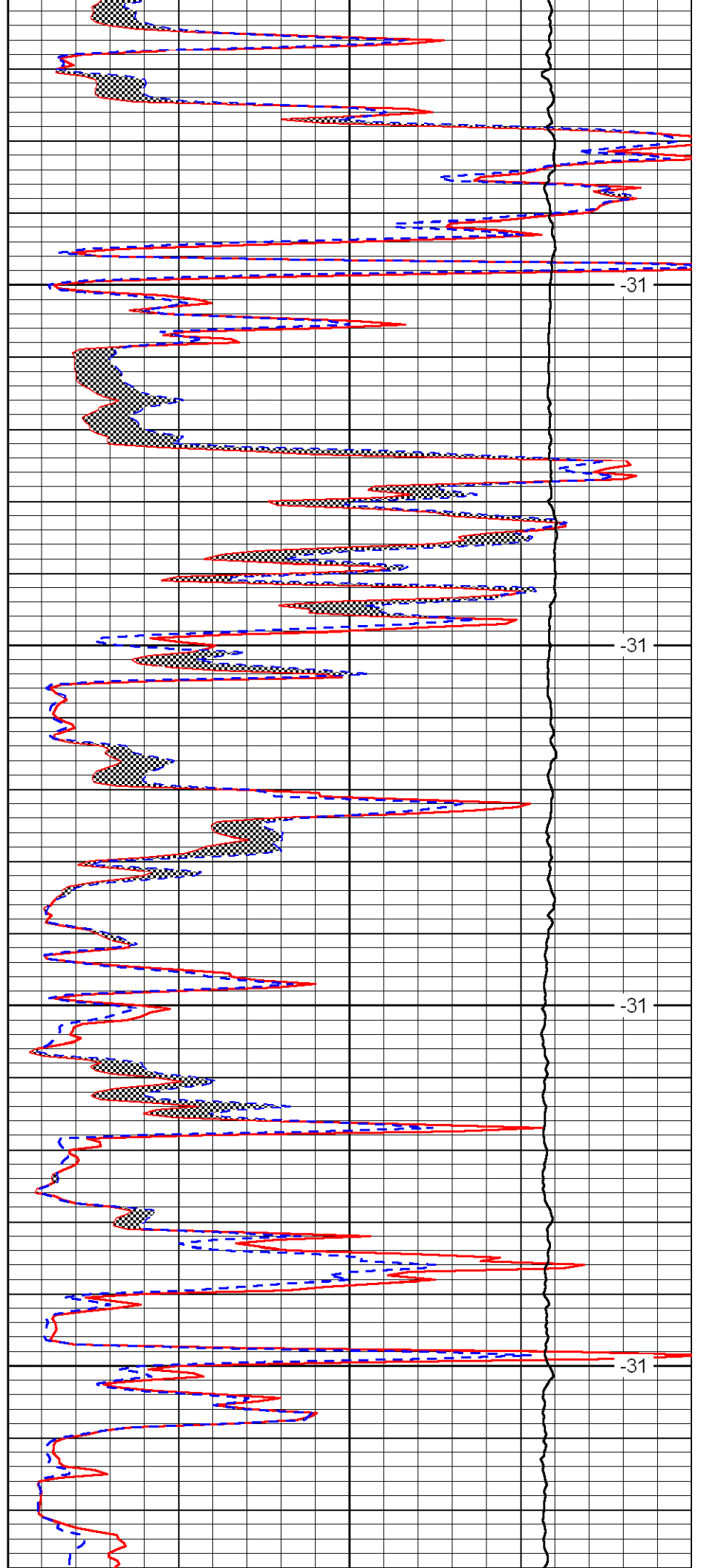


3950

4000

4050

4100

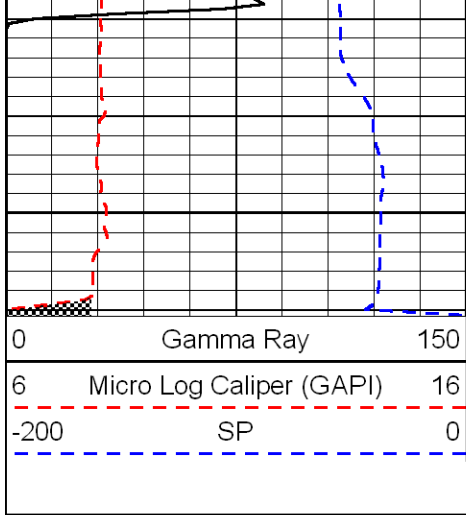


-31

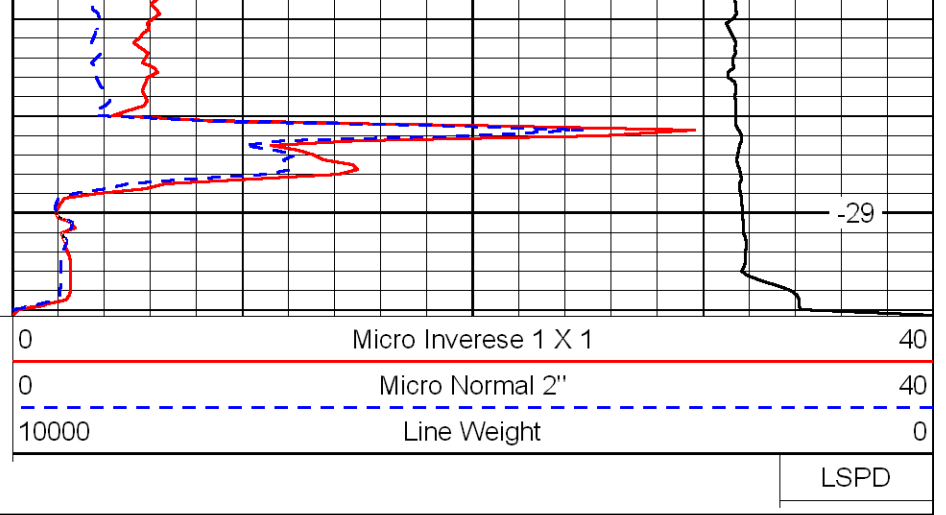
-31

-31

-31



4150



-29

LSPD