



## Dual Compensated Porosity Log

**DIGITAL LOG** (785) 625-3858

API No. 15-063-21,762-00-00	Company <b>H &amp; M Petroleum Corporation</b>	Other Services DIL MEL
	Well <b>Bonita Springs No. 1</b>	
	Field <b>Bonita Springs</b>	
	County <b>Gove</b>	State <b>Kansas</b>
	Location <b>SE SW NW SW 1420' FSL &amp; 400' FWL</b>	
	Sec: <b>7</b> Twp: <b>12S</b> Rge: <b>30W</b>	
Permanent Datum Log Measured From Drilling Measured From	Ground Level Kelly Bushing Kelly Bushing	Elevation 2910 5 Ft. Above Perm. Datum K.B. 2915 D.F. G.L. 2910

Date	12/19/2008
Run Number	One
Type Log	CNL / CDL
Depth Driller	4680
Depth Logger	4678
Bottom Logged Interval	4657
Top Logged Interval	3600
Type Fluid In Hole	Chemical
Salinity, PPM CL	3,100
Density	9.3
Level	Full
Max. Rec. Temp. F	125
Operating Rig Time	4 Hours
Equipment -- Location	17 Hays
Recorded By	C. Desaire
Witnessed By	Randy Say

Borehole Record				Casing Record			
Run No	Bit	From	To	Size	Wgt.	From	To
1	12.25	00	221	8.625	24#	00	221
2	7.875	221	4680				

<<< Fold Here >>>

All interpretations are opinions based on inferences from electrical or other measurements and we cannot and do not guarantee the accuracy or correctness of any interpretation, and we shall not, except in the case of gross or willful negligence on our part, be liable or responsible for any loss, costs, damages, or expenses incurred or sustained by anyone resulting from any interpretation made by any of our officers, agents or employees. These interpretations are also subject to our general terms and conditions set out in our current Price Schedule.

### Comments

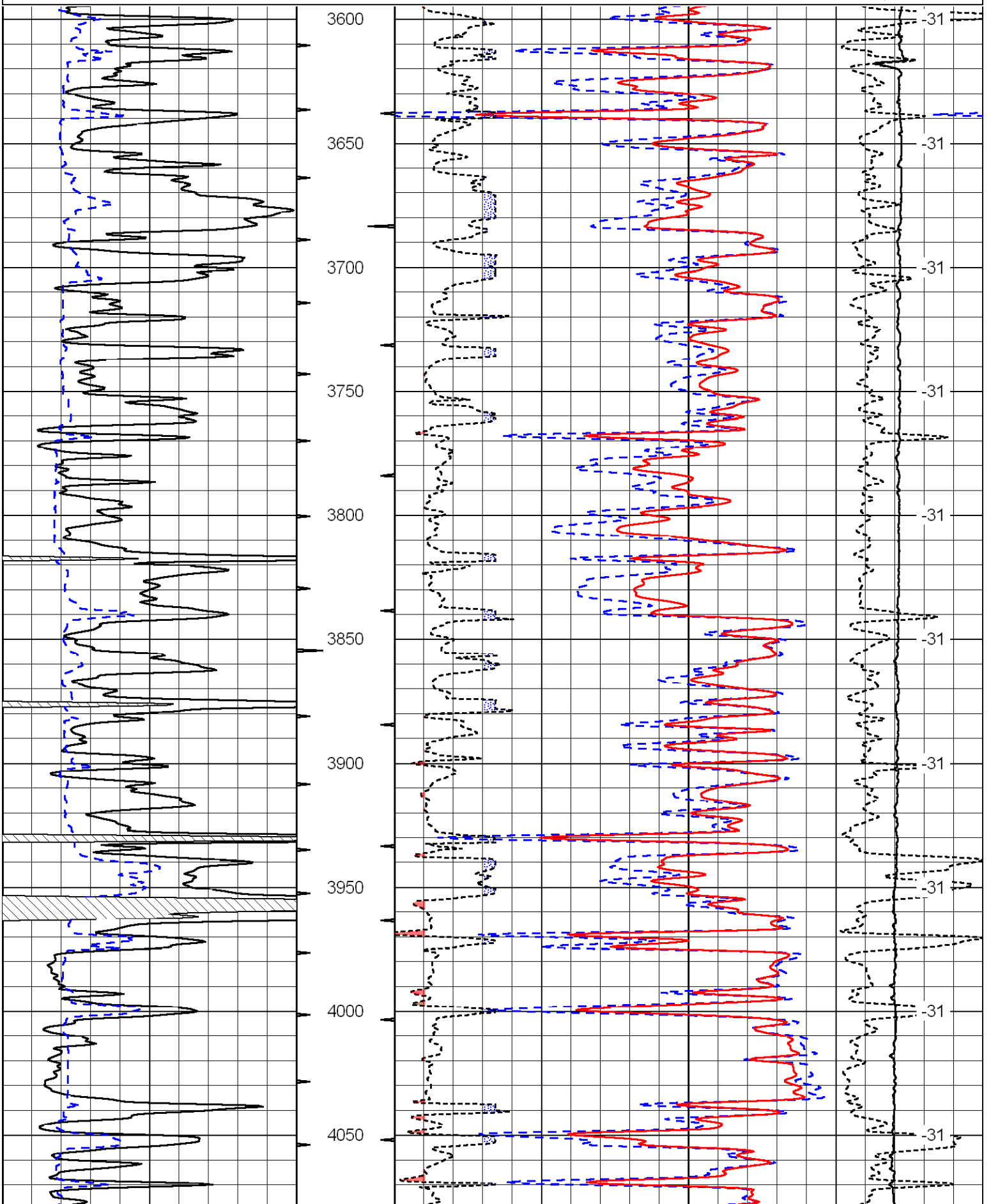
Thank you for using Log-Tech, Inc.  
(785) 625-3858

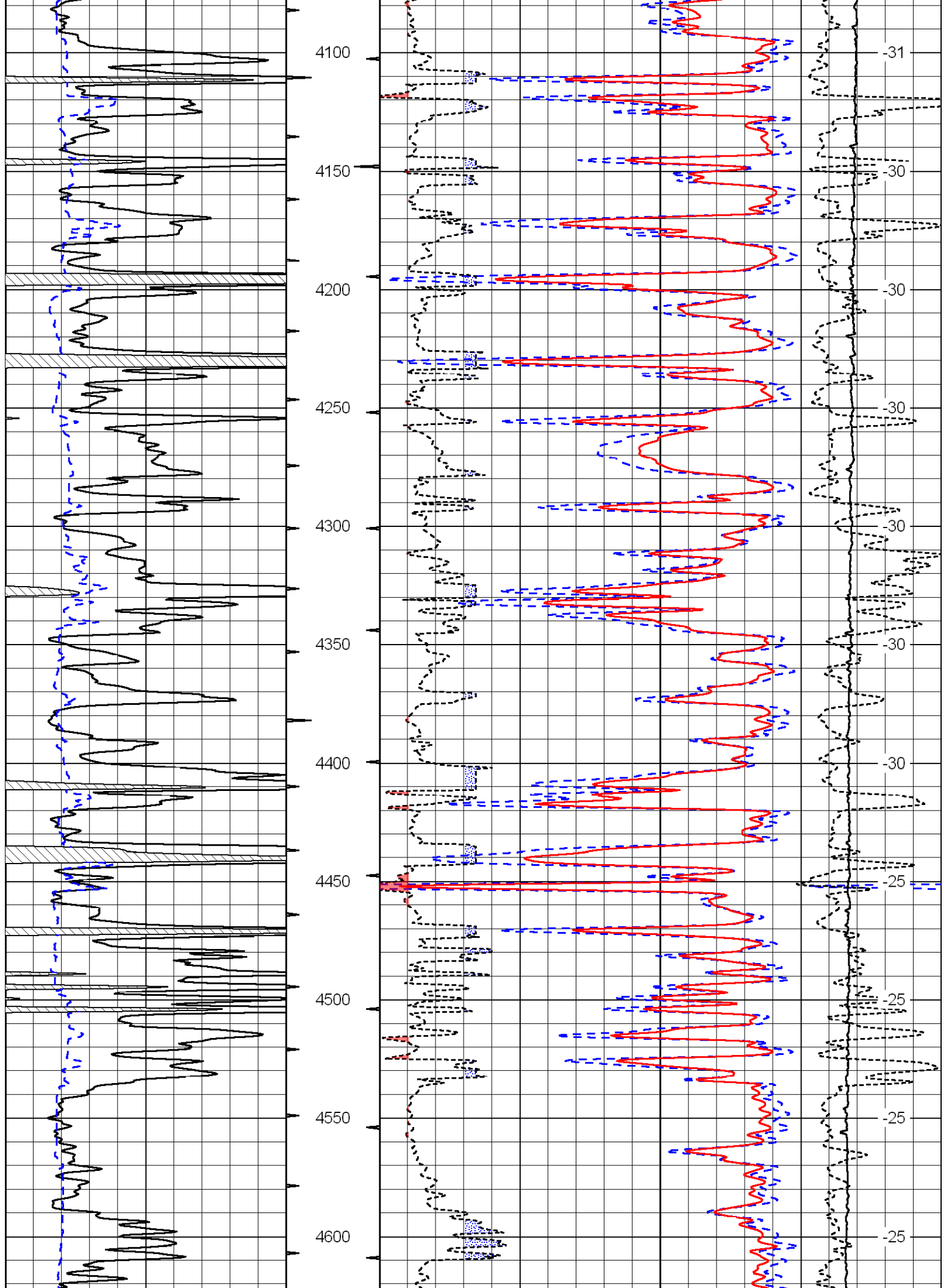
Campus, 6 1/2 S to W Rd,  
2 E, N Into

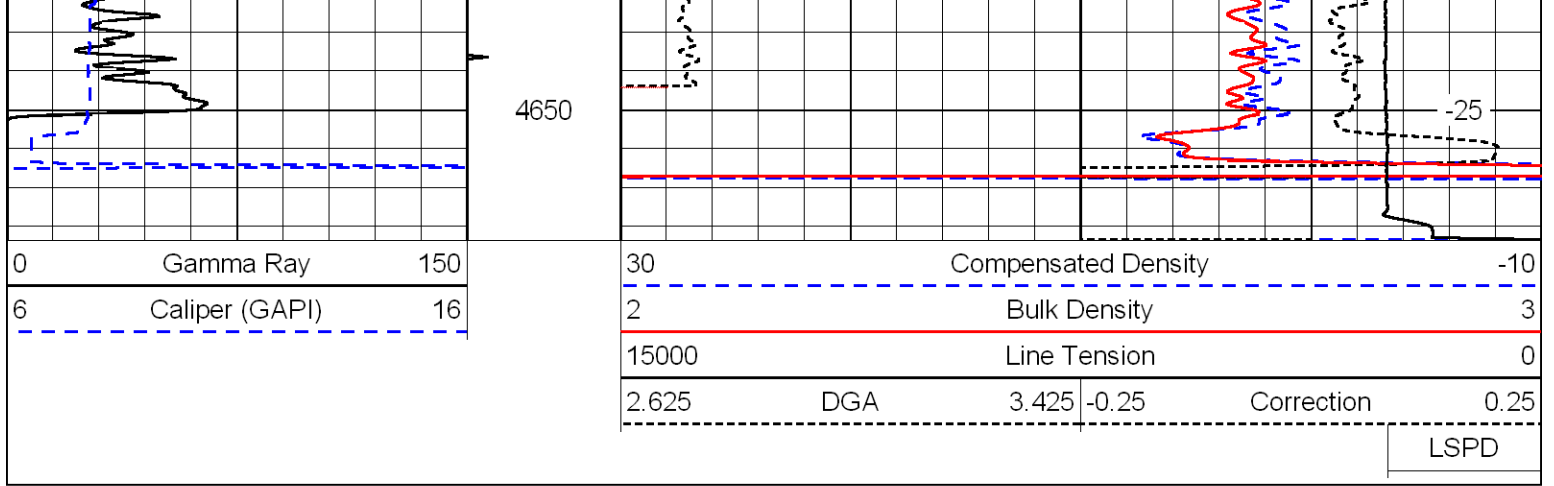
Database File: c:\warrior\data\h&m\_bonita springs no.1\h&m2hd.db  
 Dataset Pathname: dil/h&mstack  
 Presentation Format: cdl  
 Dataset Creation: Fri Dec 19 19:40:26 2008  
 Charted by: Depth in Feet scaled 1:600

0	Gamma Ray	150
6	Caliper (GAPI)	16

30	Compensated Density		-10
2	Bulk Density		3
15000	Line Tension		0
2.625	DGA	3.425	-0.25
Correction			0.25
LSPD			







Database File: c:\warrior\data\h&m\_bonita springs no.1\h&m2hd.db  
 Dataset Pathname: dil/h&mstack  
 Presentation Format: cndlspec  
 Dataset Creation: Fri Dec 19 19:40:26 2008  
 Charted by: Depth in Feet scaled 1:240

