



Dual Compensated
Porosity Log

DIGITAL LOG (785) 625-3858

API No. 15-167-23,545-00-00

Company **Murfin Drilling Company, Inc.**
 Well **Anderson 'W' No. MV 2**
 Field **Trapp**
 County **Russell** State **Kansas**

Location **E/2 - NE/4 - NE/4
660' FNL & 330' FEL**

Sec: **7** Twp: **15 S** Rge: **13 W**

Other Services
DIL
MEL

Permanent Datum **Ground Level** Elevation **1765**
 Log Measured From **Kelly Bushing** 5 Ft. Above Perm. Datum
 Drilling Measured From **Kelly Bushing**

K.B. 1770
D.F. 1765
G.L. 1765

Date **11/4/2008**

Run Number **Two**

Type Log **CNL / CDL**

Depth Driller **3300**

Depth Logger **3299**

Bottom Logged Interval **3278**

Top Logged Interval **2100**

Type Fluid In Hole **Chemical**

Salinity, PPM CL **2,500**

Density **8.6**

Level **Full**

Max. Rec. Temp. F **111**

Operating Rig Time **3 Hours**

Equipment -- Location **15 Hays**

Recorded By **B. Becker**

Witnessed By **Bob Stozle**

Run No	Bit	Borehole Record		Casing Record	
		From	To	From	To
1	12.25	00	749	8.625	24#
2	7.875	749	3300		

<<< Fold Here >>>

All interpretations are opinions based on inferences from electrical or other measurements and we cannot and do not guarantee the accuracy or correctness of any interpretation, and we shall not, except in the case of gross or willful negligence on our part, be liable or responsible for any loss, costs, damages, or expenses incurred or sustained by anyone resulting from any interpretation made by any of our officers, agents or employees. These interpretations are also subject to our general terms and conditions set out in our current Price Schedule.

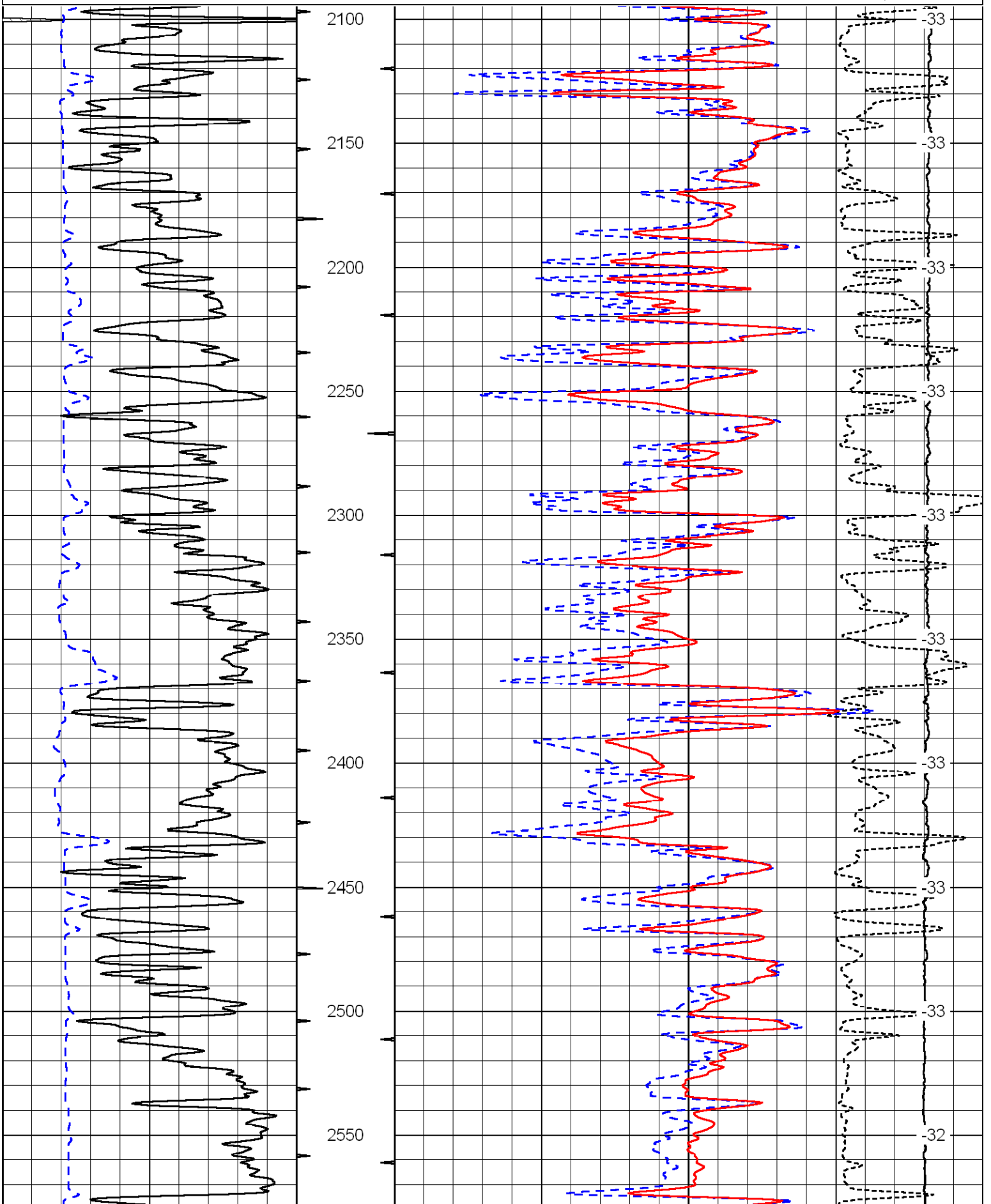
Comments

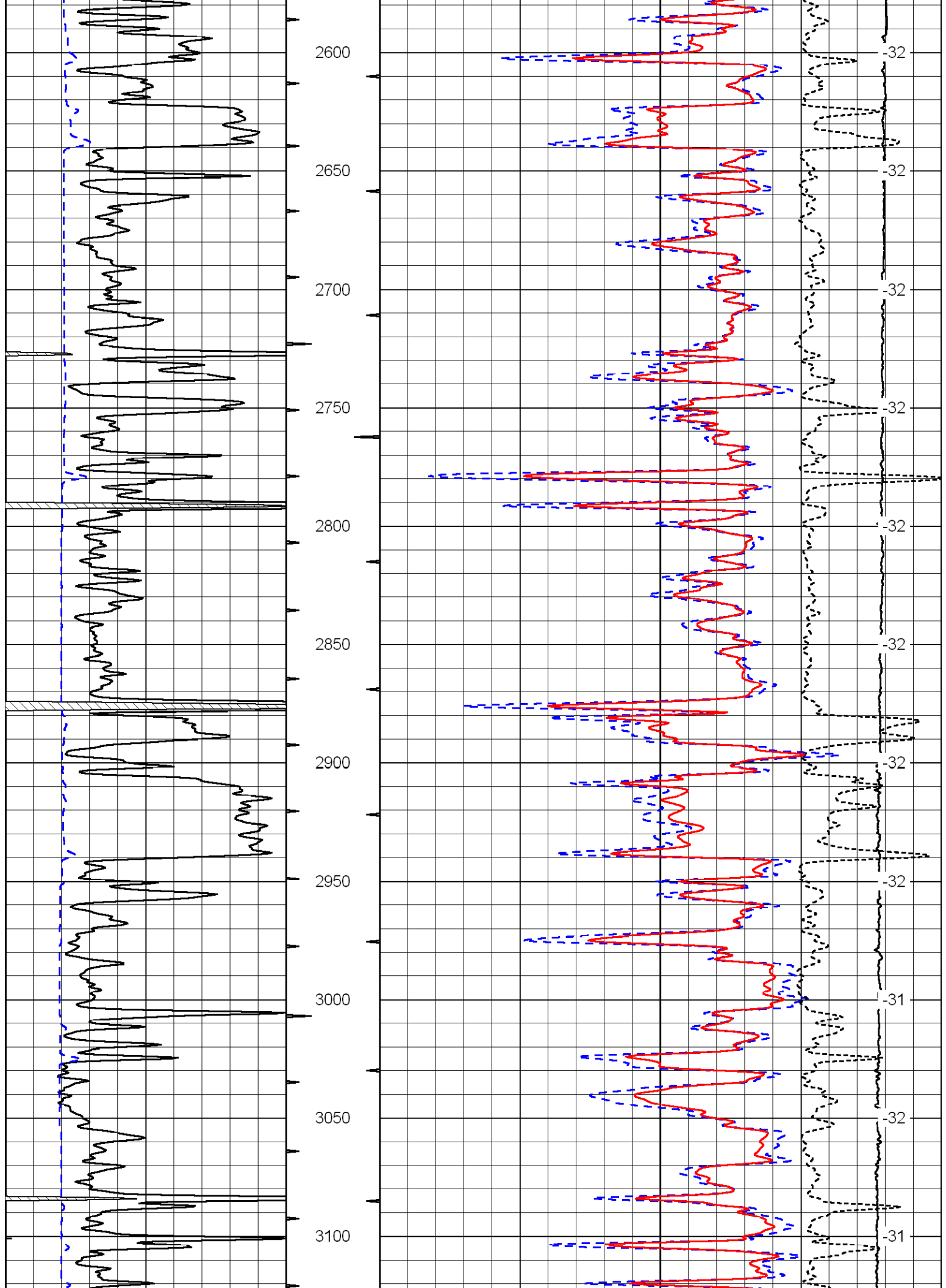
Thank you for using Log-Tech, Inc.
 (785) 625-3858
 Russell, Ks; East on I70 to Pioneer Road;
 5 South; 1 West; 1-12 South;
 West into through 2 cattle crossings and north to rig

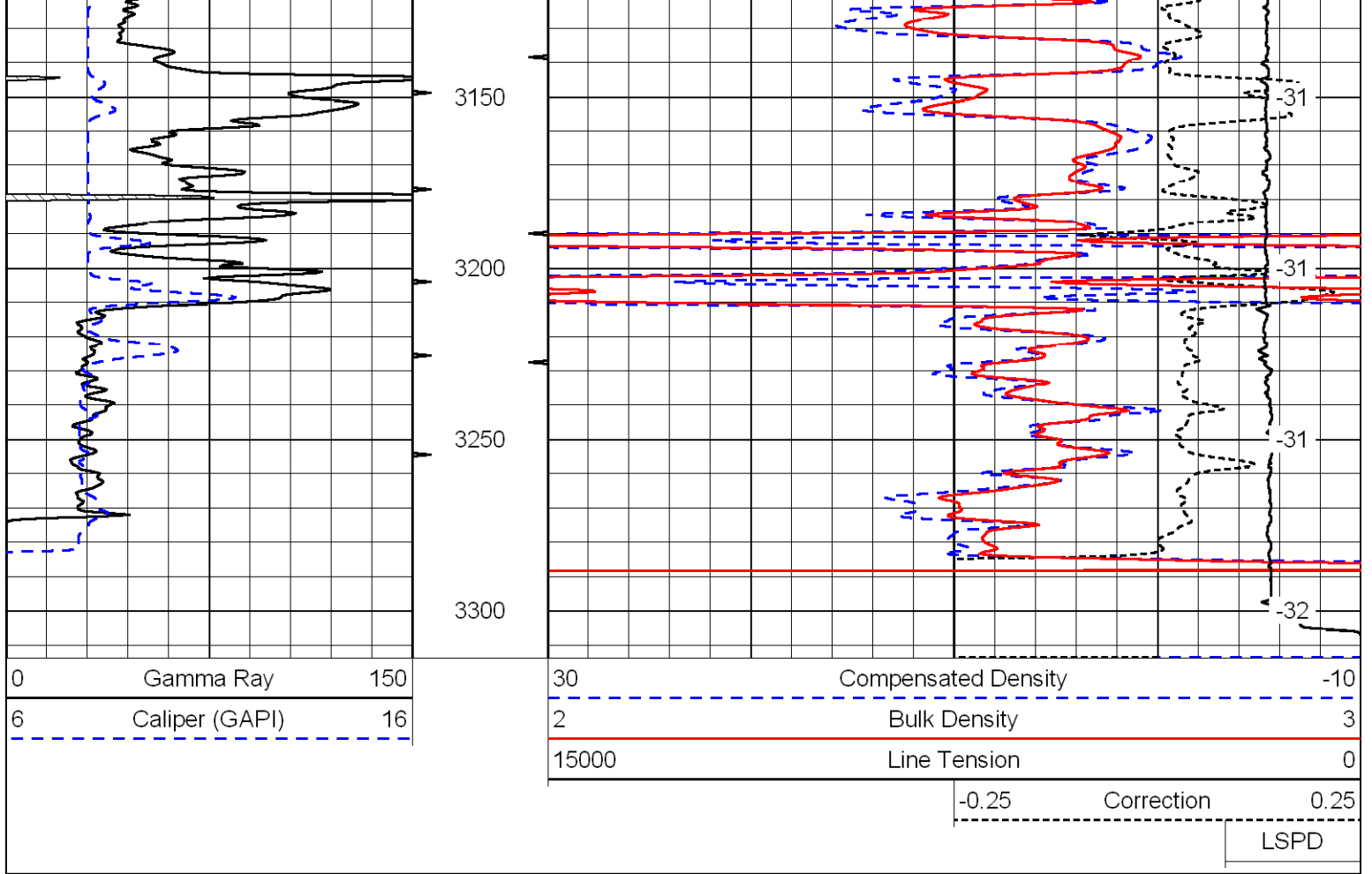
Database File: c:\warrior\data\murfin_anderson 'm' no. mv 2\murfinhd.db
 Dataset Pathname: DIL/murfstk
 Presentation Format: cdl
 Dataset Creation: Tue Nov 04 02:35:30 2008
 Charted by: Depth in Feet scaled 1:600

0	Gamma Ray	150
6	Caliper (GAPI)	16

30	Compensated Density	-10
2	Bulk Density	3
15000	Line Tension	0
-0.25	Correction	0.25
		LSPD







Database File: c:\warrior\data\murfin_anderson 'm' no. mv 2\murfinhd.db
 Dataset Pathname: DIL/murfstk
 Presentation Format: cndlspec
 Dataset Creation: Tue Nov 04 02:35:30 2008
 Charted by: Depth in Feet scaled 1:240

