



Dual Induction Log

DIGITAL LOG

(785) 625-3858

API No.

15-167-23,545-00-00

Company **Murfin Drilling Company, Inc.**

Well **Anderson 'W' No. MV 2**

Field **Trapp**

County **Russell**

State

Kansas

Location

**E/2 - NE/4 - NE/4
660' FNL & 330' FEL**

Other Services
CNL/CDL
MEL

Sec: **7**

Twp: **15 S**

Rge: **13 W**

Elevation

K.B. 1770
D.F. 1765
G.L. 1765

Permanent Datum Ground Level
Log Measured From Kelly Bushing
Drilling Measured From Kelly Bushing

Elevation 1765
5 Ft. Above Perm. Datum

Date 11/4/2008

Run Number One

Depth Driller 3300

Depth Logger 3299

Bottom Logged Interval 3298

Top Log Interval 0

Casing Driller 8.625 @ 749

Casing Logger 746

Bit Size 7.875

Type Fluid in Hole Chemical

Salinity, ppm CL 2.500

Density / Viscosity 8.6 45

pH / Fluid Loss 11.5 7.2

Source of Sample Flowline

Rm @ Meas. Temp 1.5 @ 62

Rmf @ Meas. Temp 1.13 @ 62

Rmc @ Meas. Temp 2.03 @ 62

Source of Rmf / Rmc Charts

Rm @ BHT 0.84 @ 111

Operating Rig Time 3 Hours

Max Rec. Temp. F 111

Equipment Number 15

Location Hays

Recorded By B. Becker

Witnessed By Bob Stozle

<<< Fold Here >>>

All interpretations are opinions based on inferences from electrical or other measurements and we cannot and do not guarantee the accuracy or correctness of any interpretation, and we shall not, except in the case of gross or willful negligence on our part, be liable or responsible for any loss, costs, damages, or expenses incurred or sustained by anyone resulting from any interpretation made by any of our officers, agents or employees. These interpretations are also subject to our general terms and conditions set out in our current Price Schedule.

Comments

Thank you for using Log-Tech, Inc.
(785) 625-3858

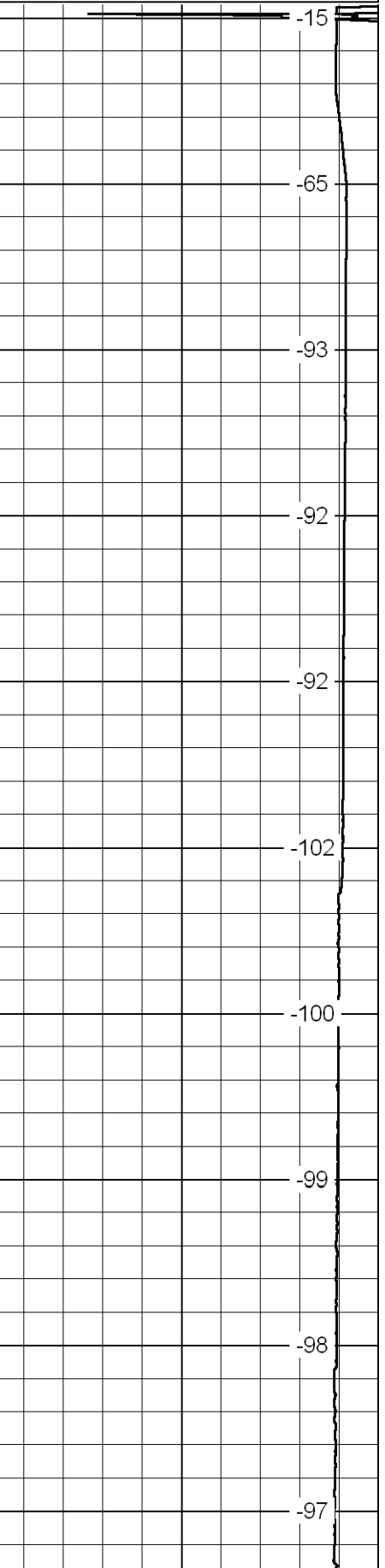
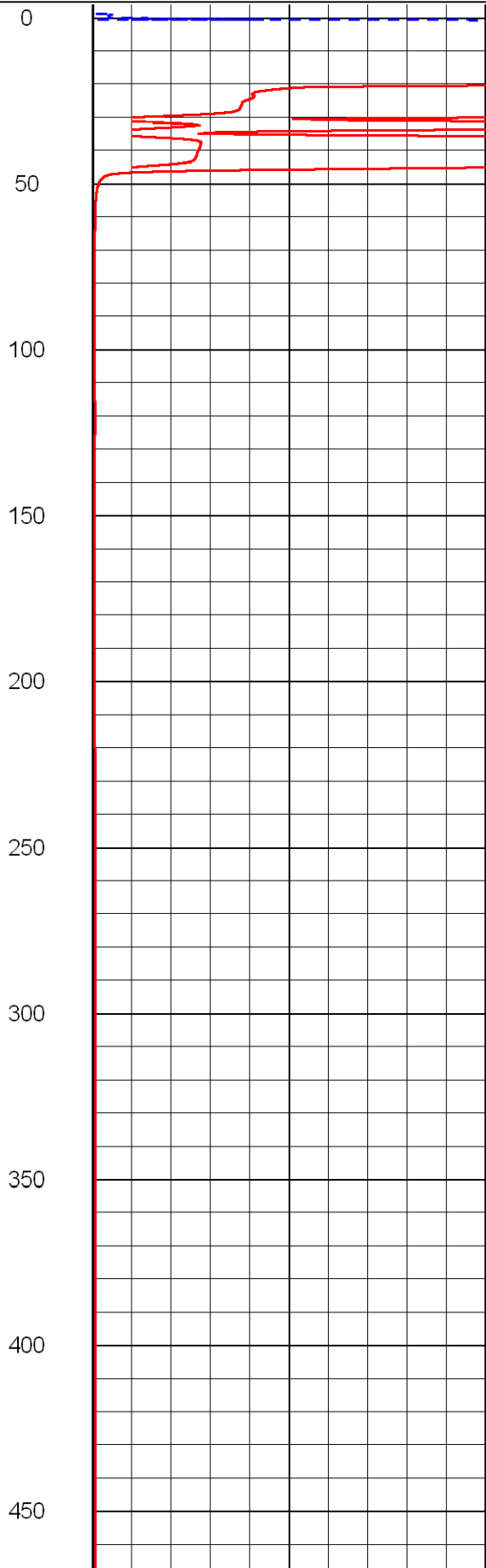
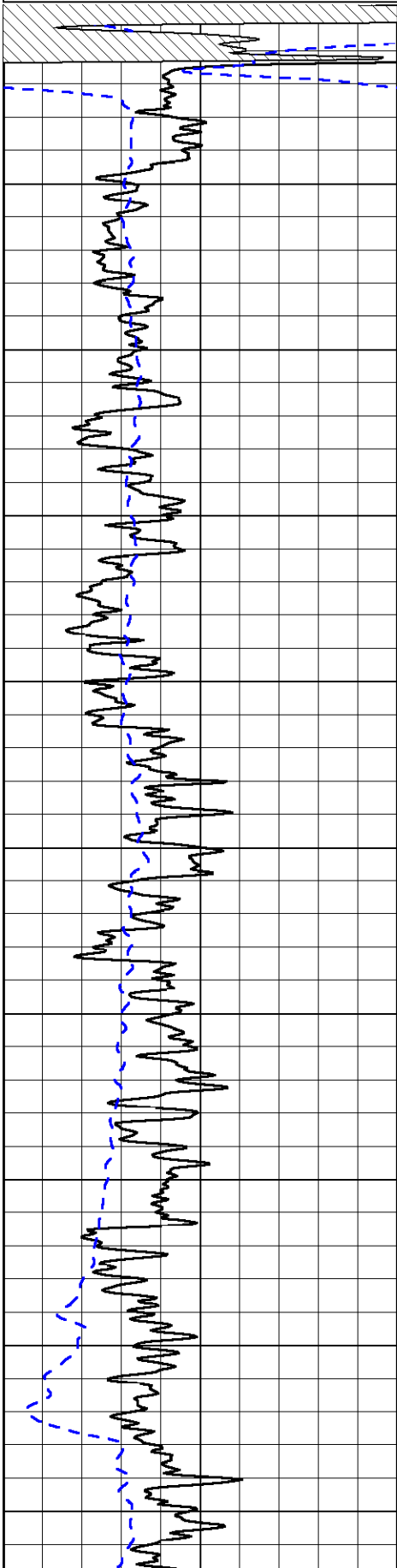
Russell, Ks; East on I70 to Pioneer Road;
5 South; 1 West; 1-12 South;
West into through 2 cattle crossings and north to rig

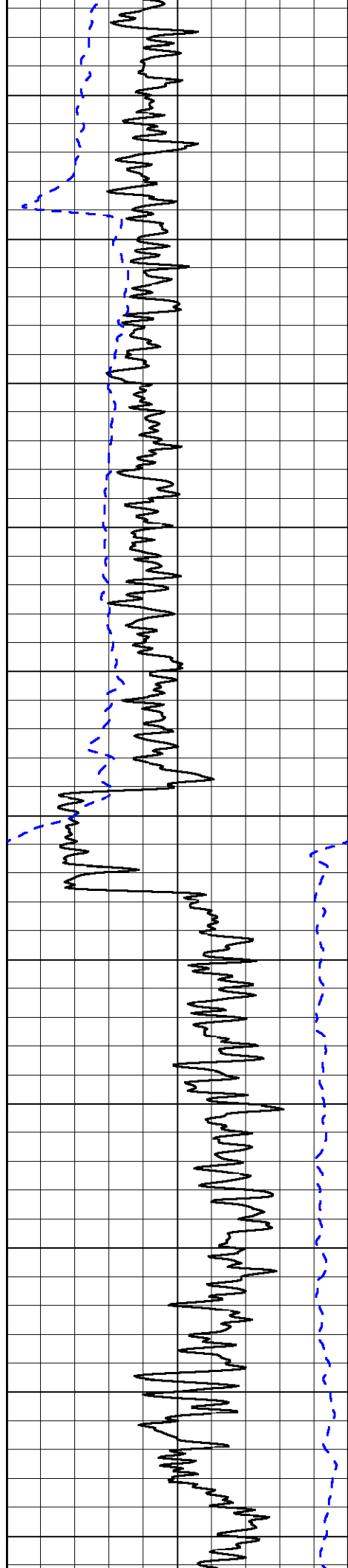
Database File: c:\warrior\data\murfin_anderson 'm' no. mv 2\murfinhd.db
Dataset Pathname: DIL/murfstk
Presentation Format: dil2in
Dataset Creation: Tue Nov 04 02:35:30 2008
Charted by: Depth in Feet scaled 1:600

0 Gamma Ray 150
-200 SP 0

0 Shallow Resistivity 50
0 Deep Resistivity 50
1000 Conductivity 0
15000 Line Tension 0
50 Shallow Resistivity 50
50 Deep Resistivity 50

LSPD





500

550

600

650

700

750

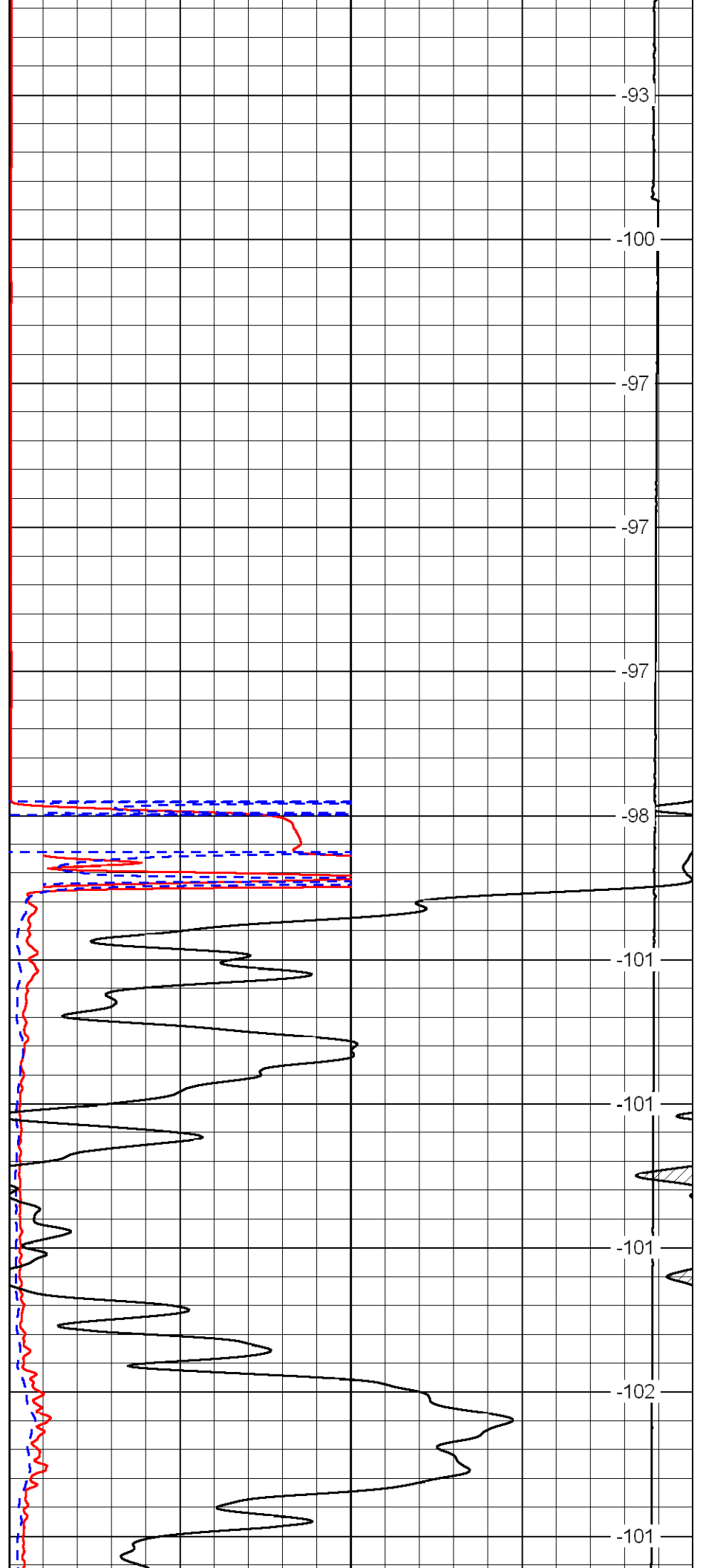
800

850

900

950

1000



-93

-100

-97

-97

-97

-98

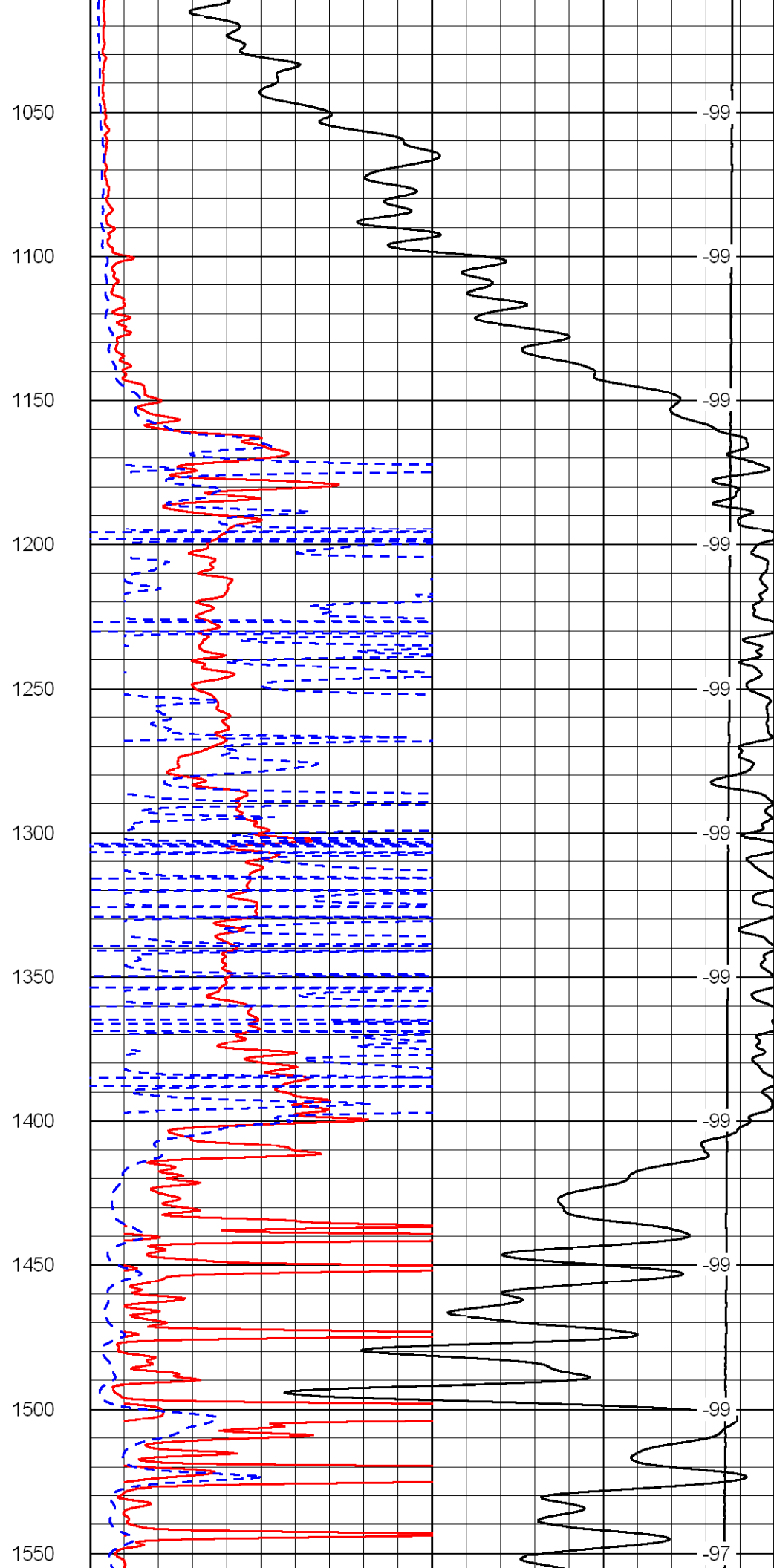
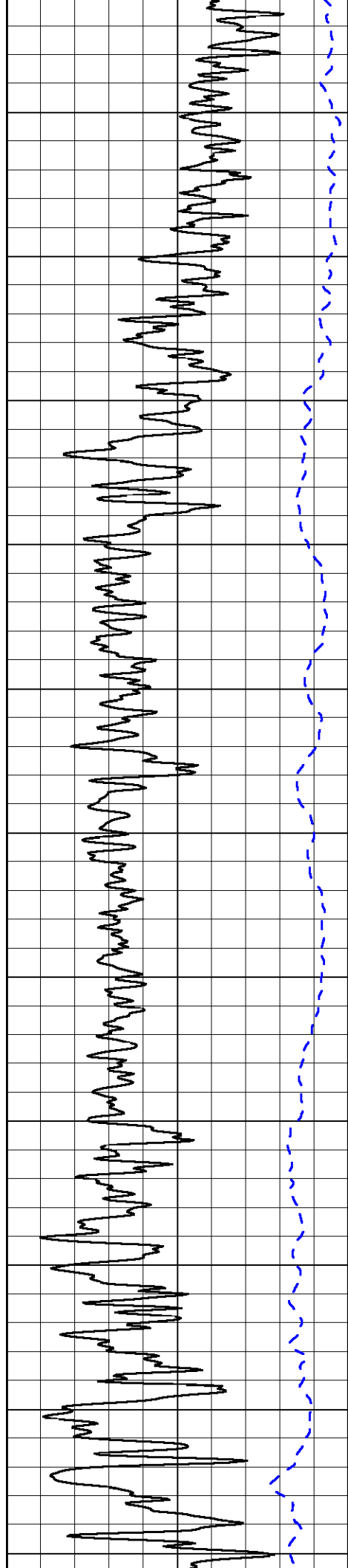
-101

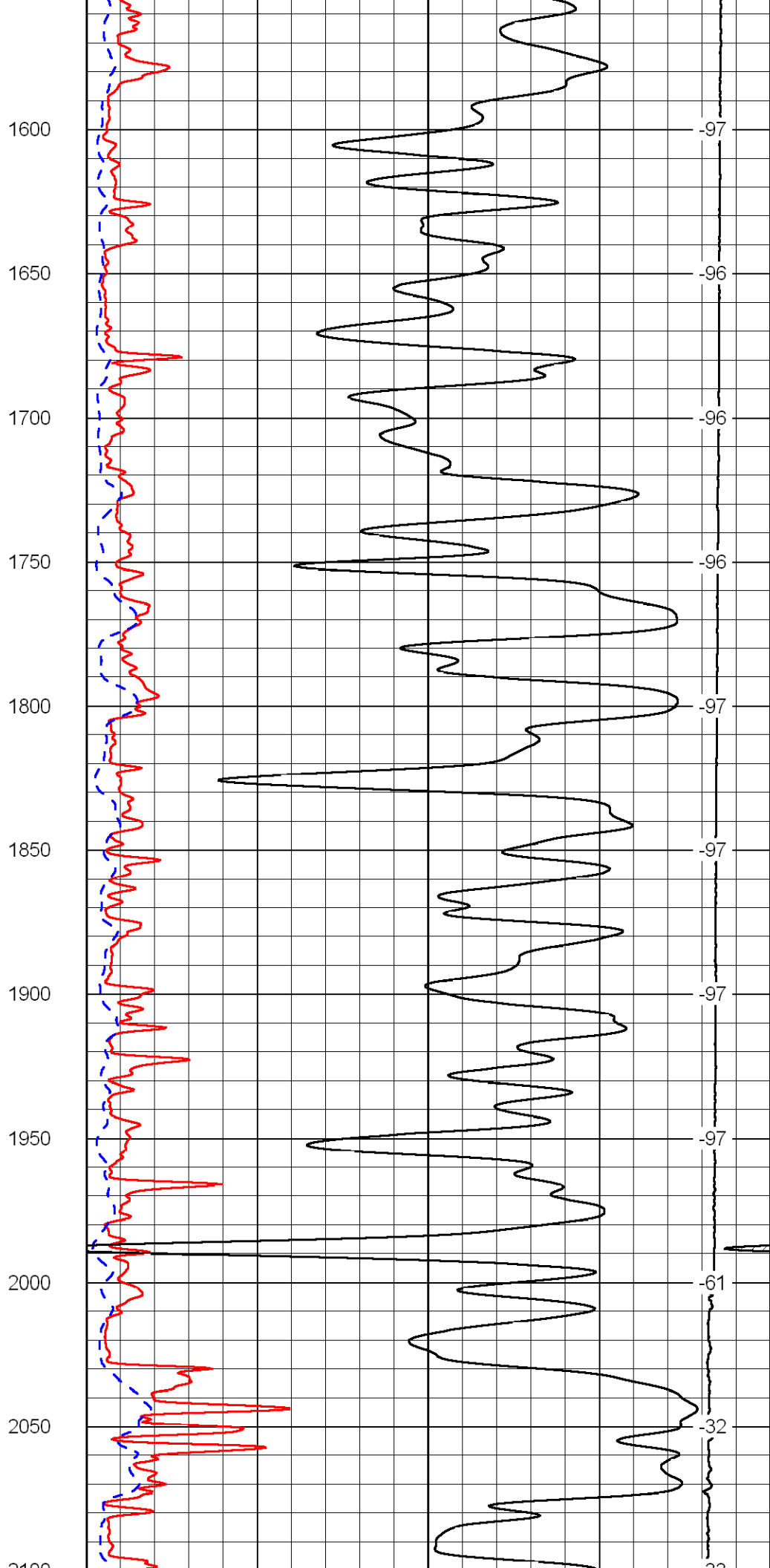
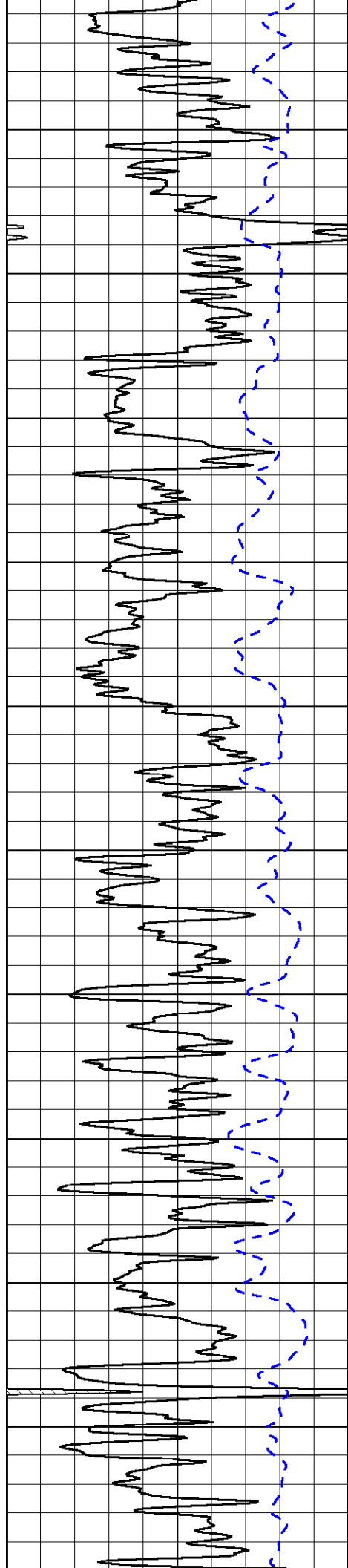
-101

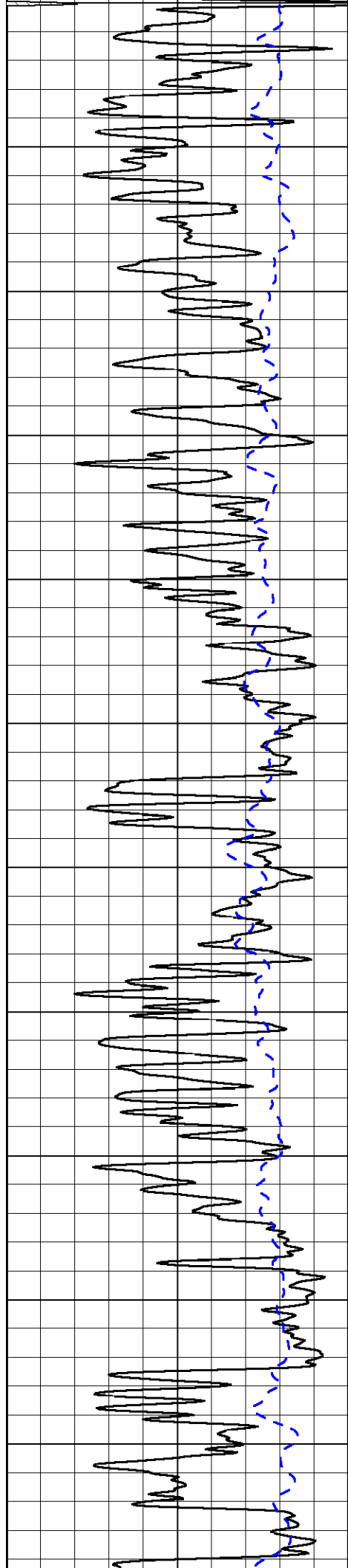
-101

-102

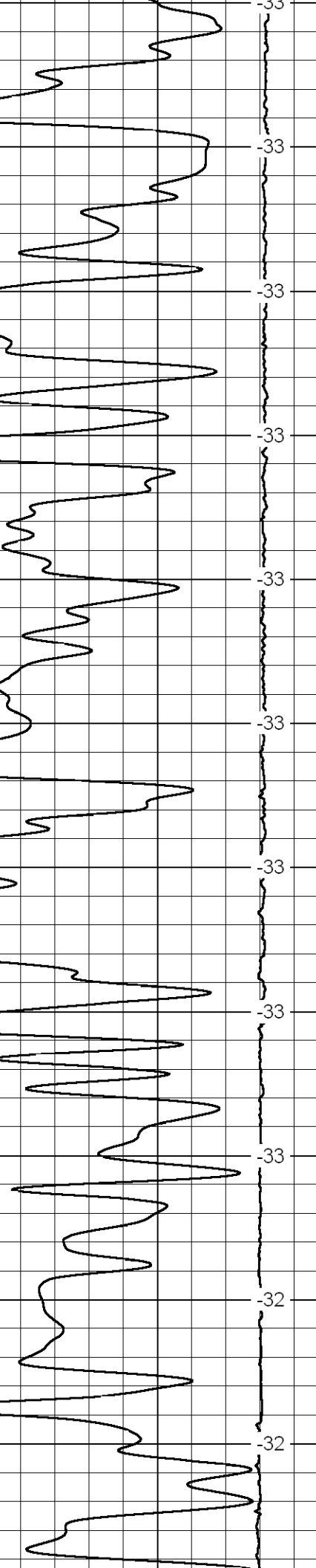
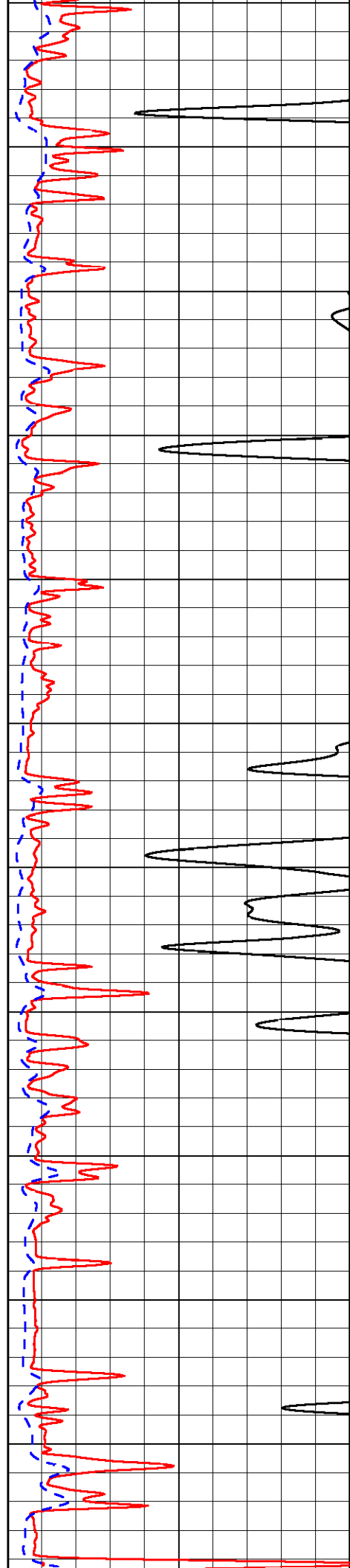
-101



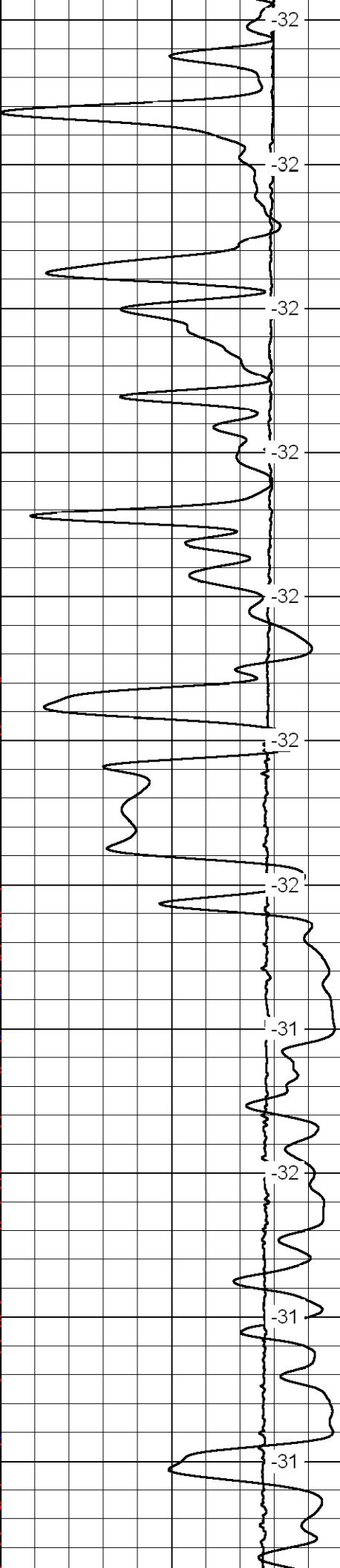
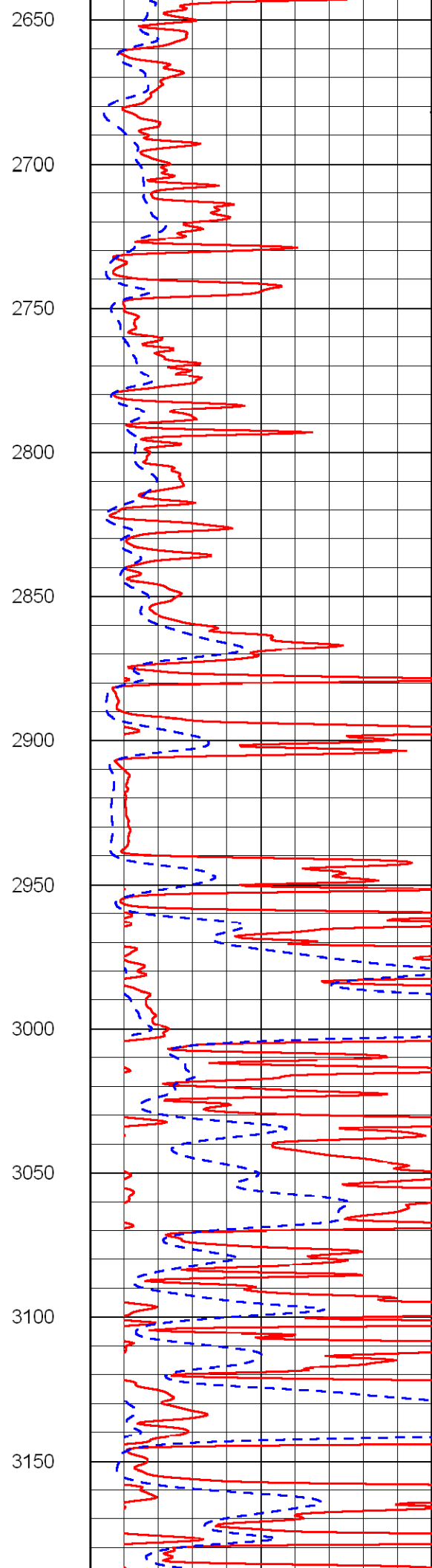
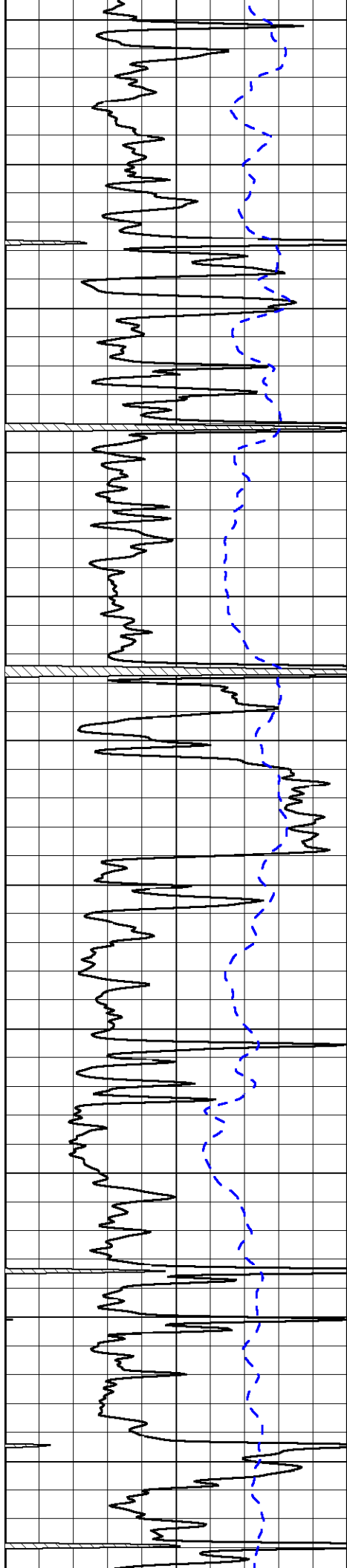


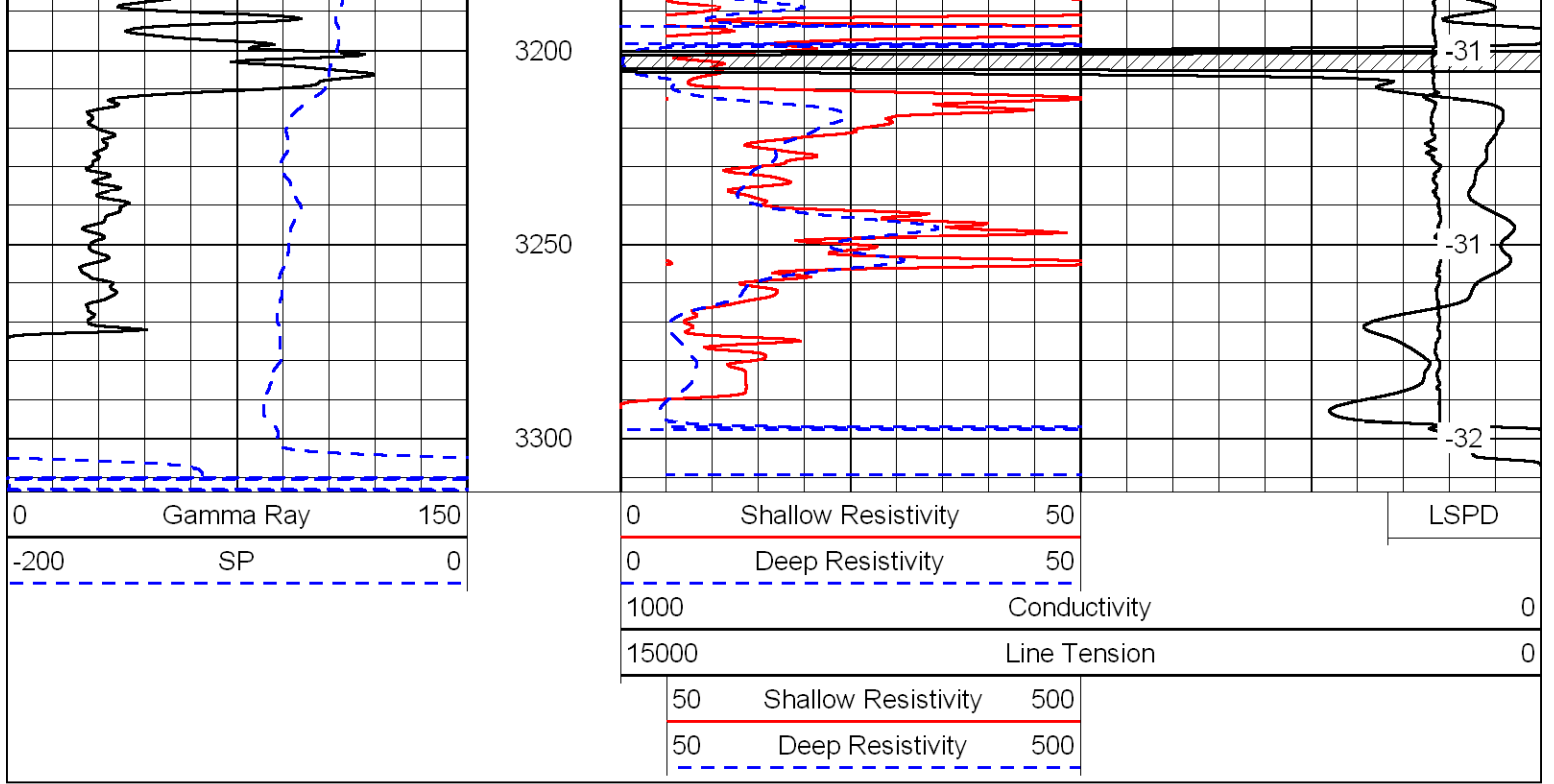


2100
2150
2200
2250
2300
2350
2400
2450
2500
2550
2600

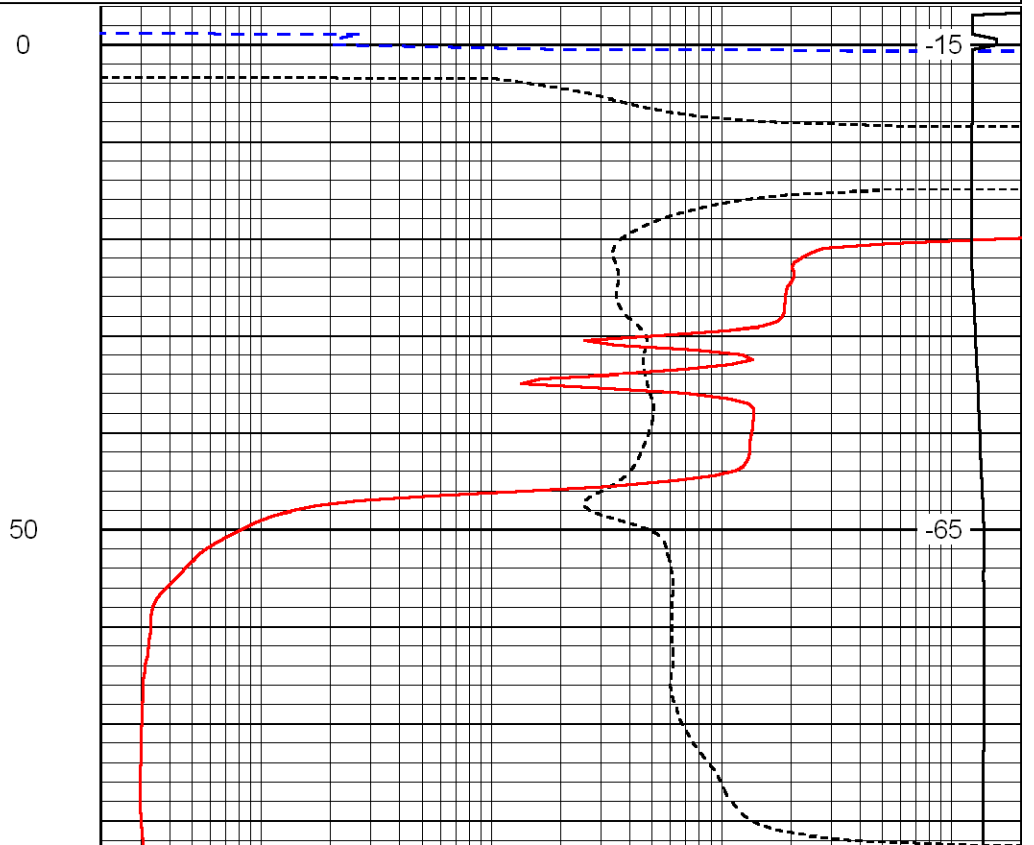
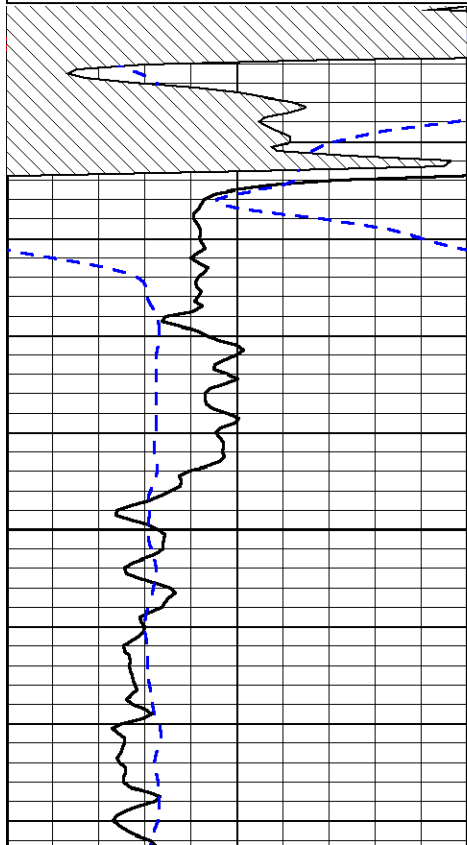
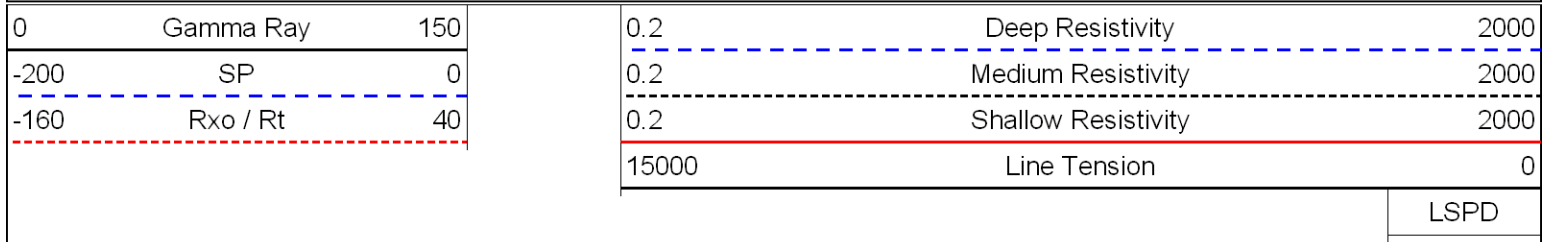


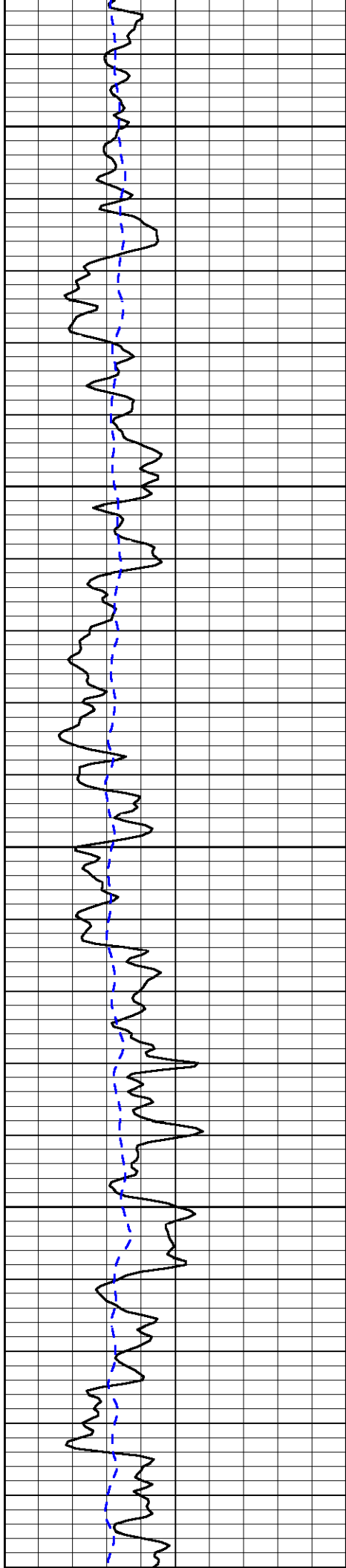
-33
-33
-33
-33
-33
-33
-33
-33
-33
-32
-32





Database File: c:\warrior\data\murfin_anderson 'm' no. mv 2\murfinhd.db
 Dataset Pathname: DIL/murfstk
 Presentation Format: dil
 Dataset Creation: Tue Nov 04 02:35:30 2008
 Charted by: Depth in Feet scaled 1:240





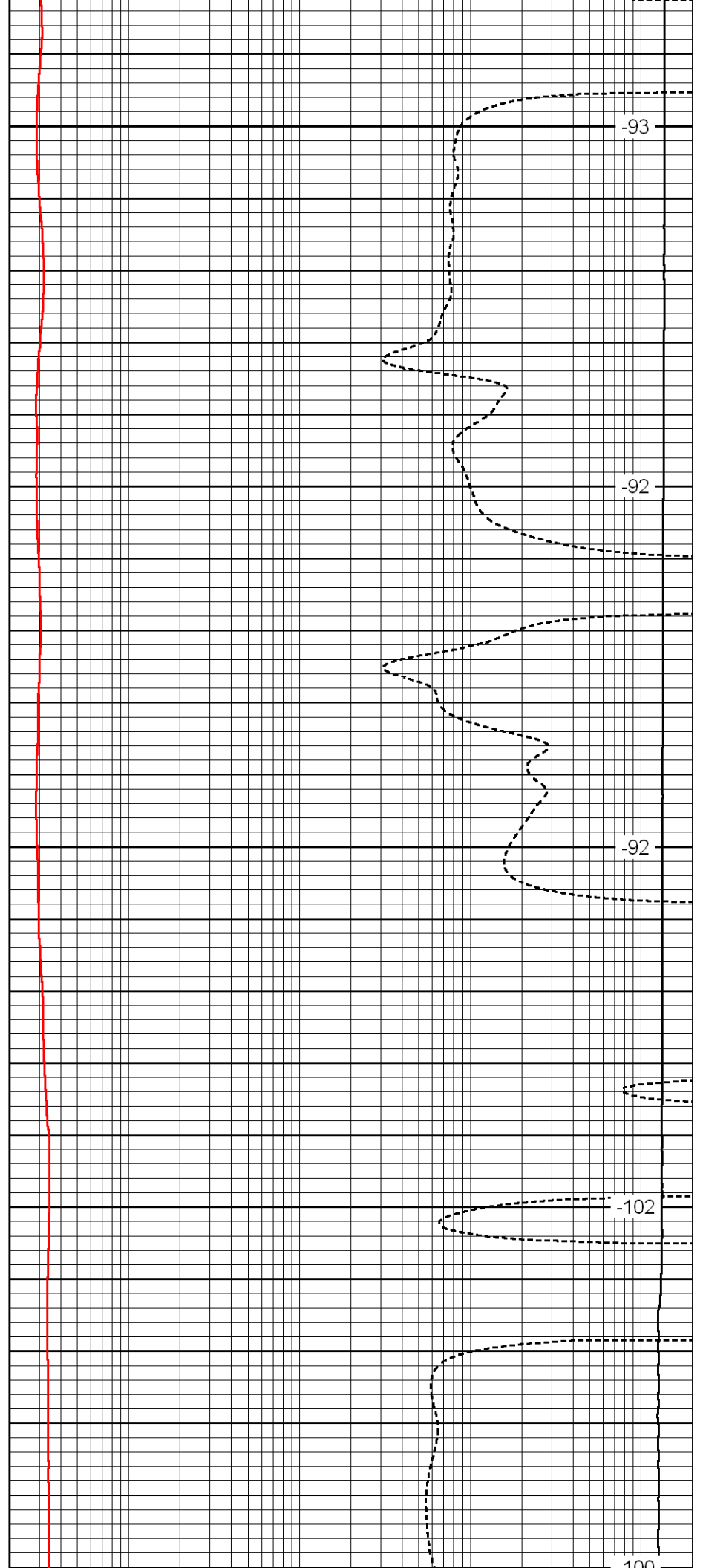
100

150

200

250

300



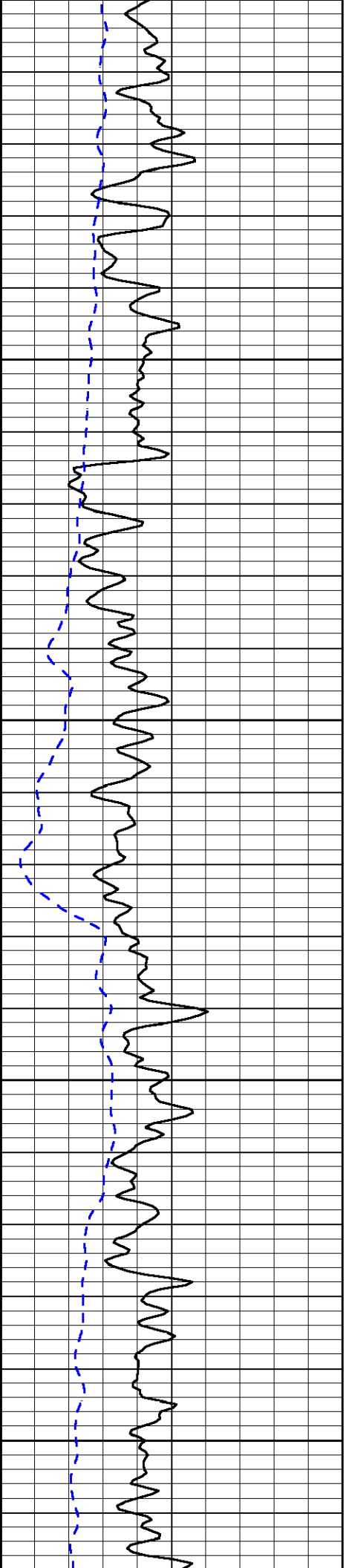
-93

-92

-92

-102

100



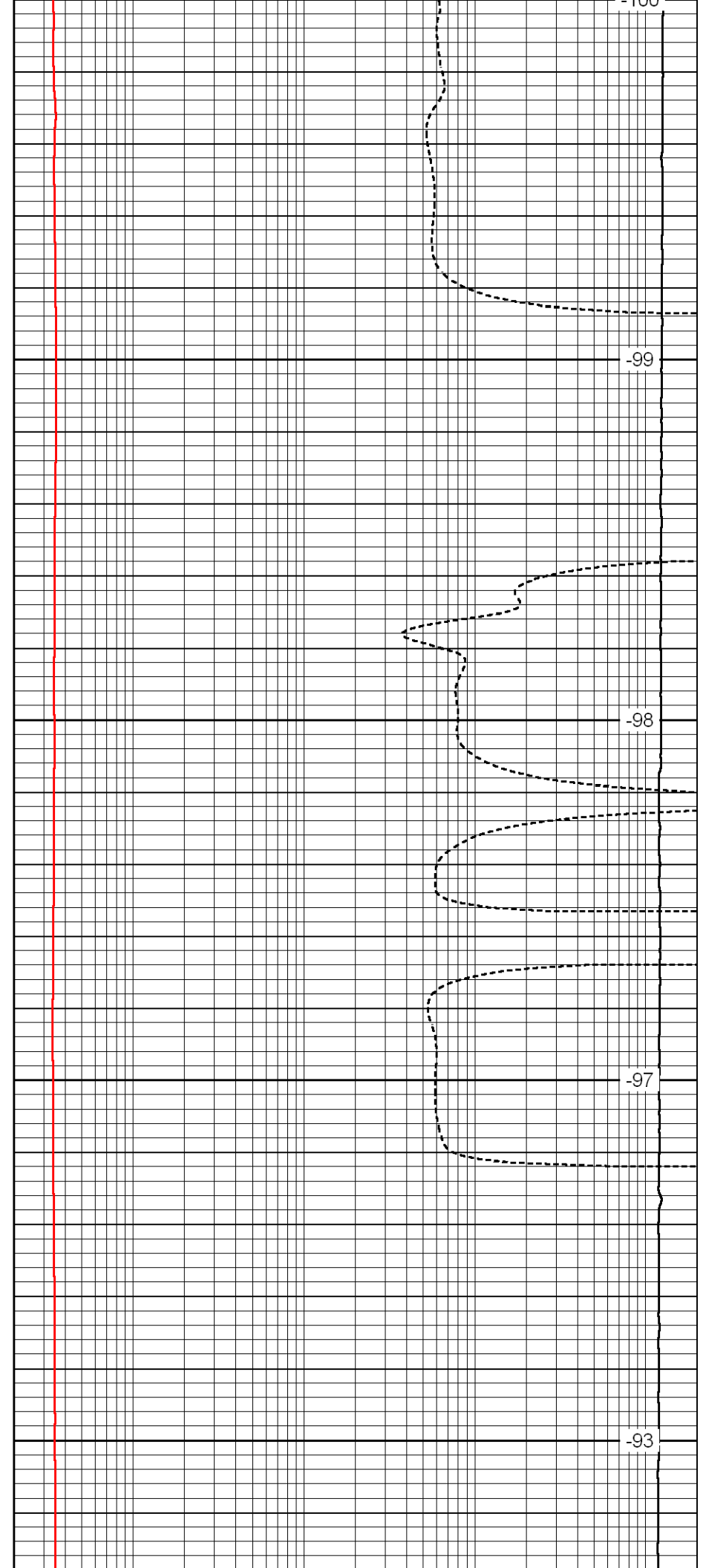
300

350

400

450

500



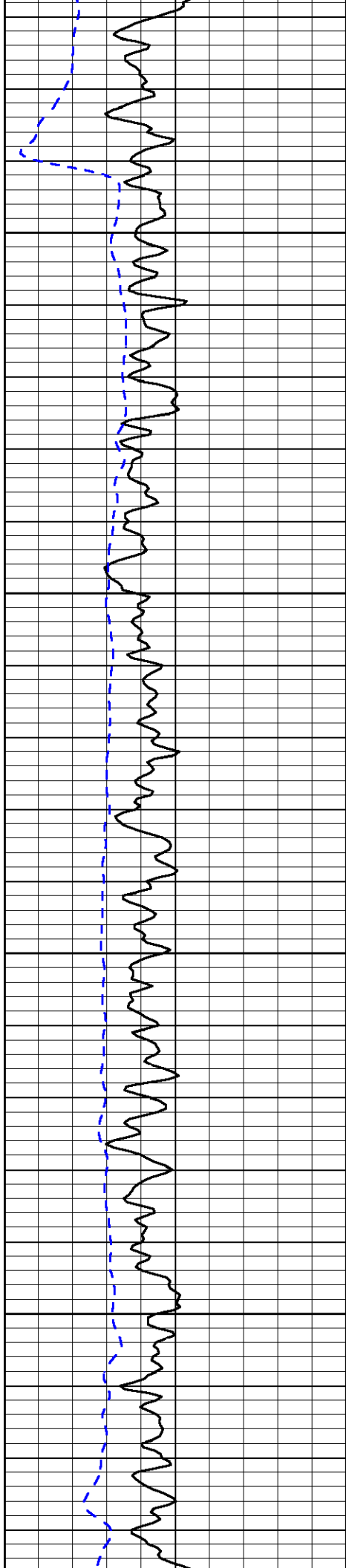
100

-99

-98

-97

-93

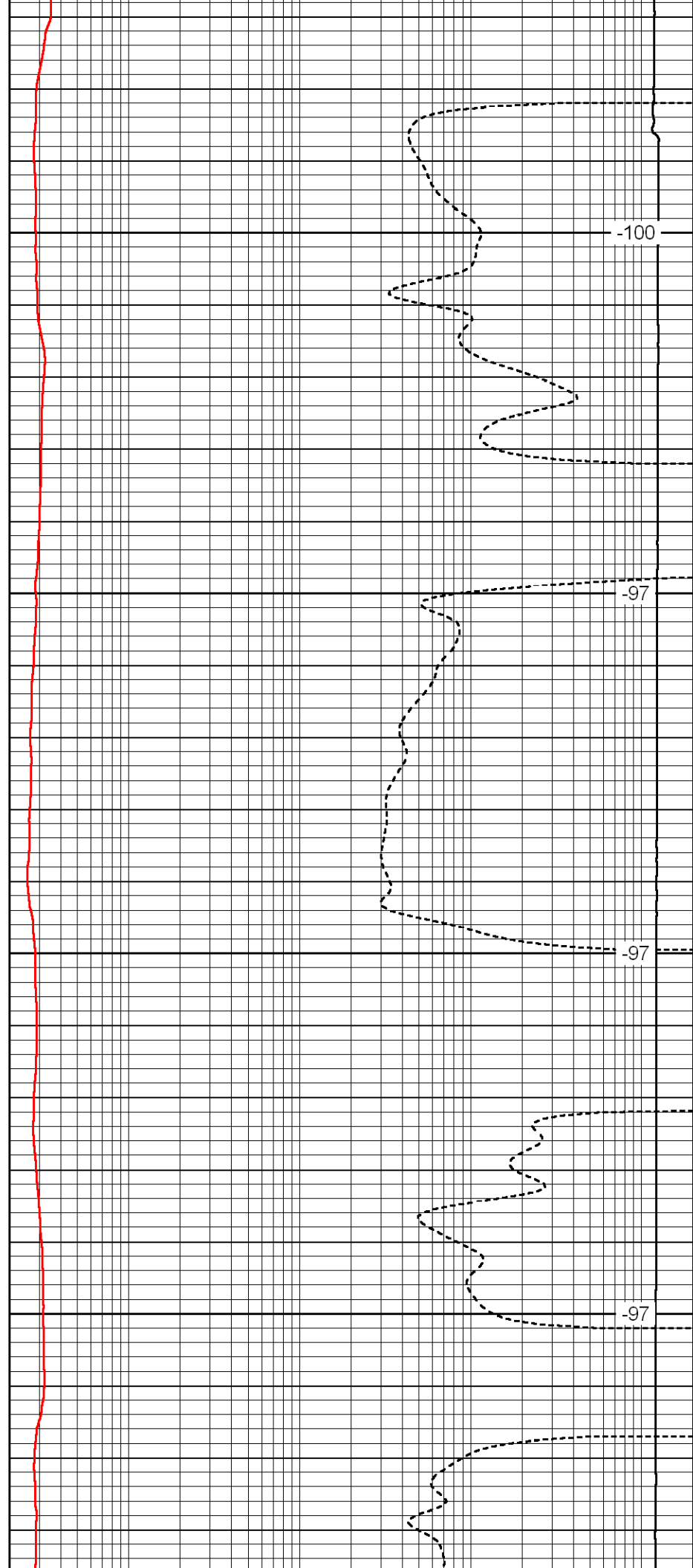


550

600

650

700

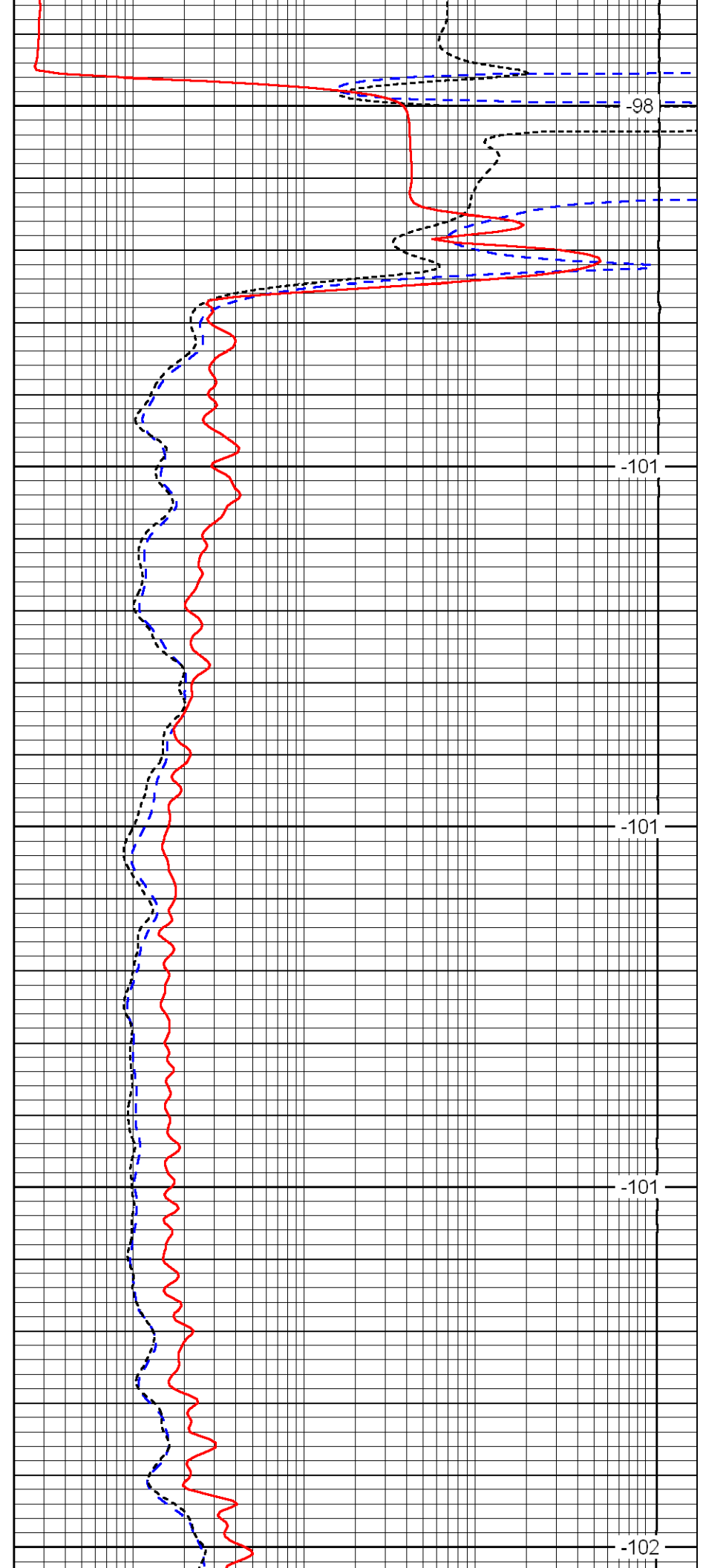
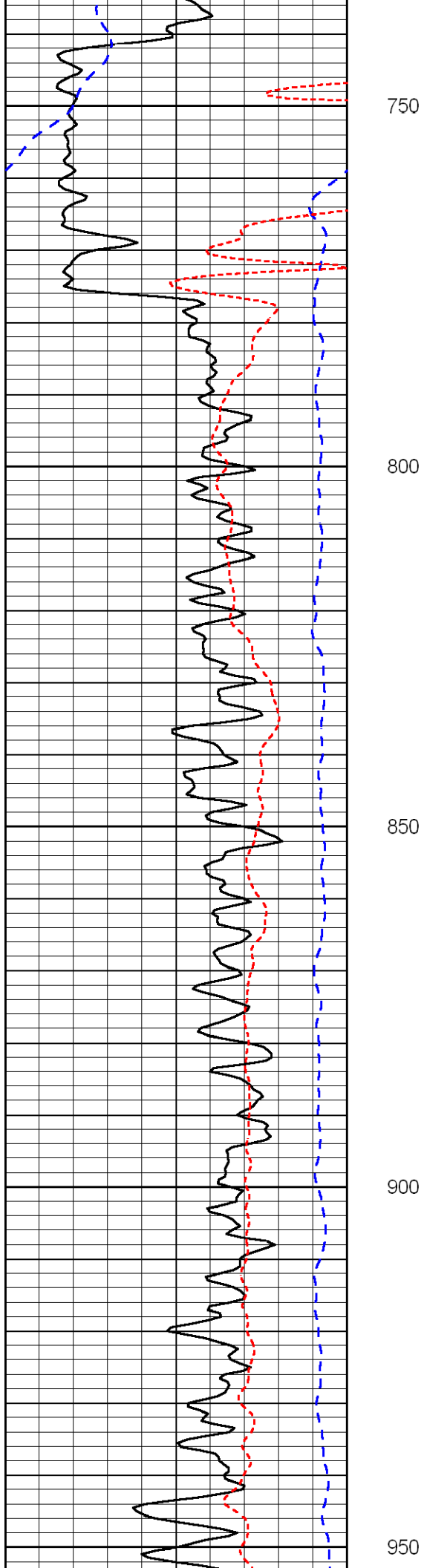


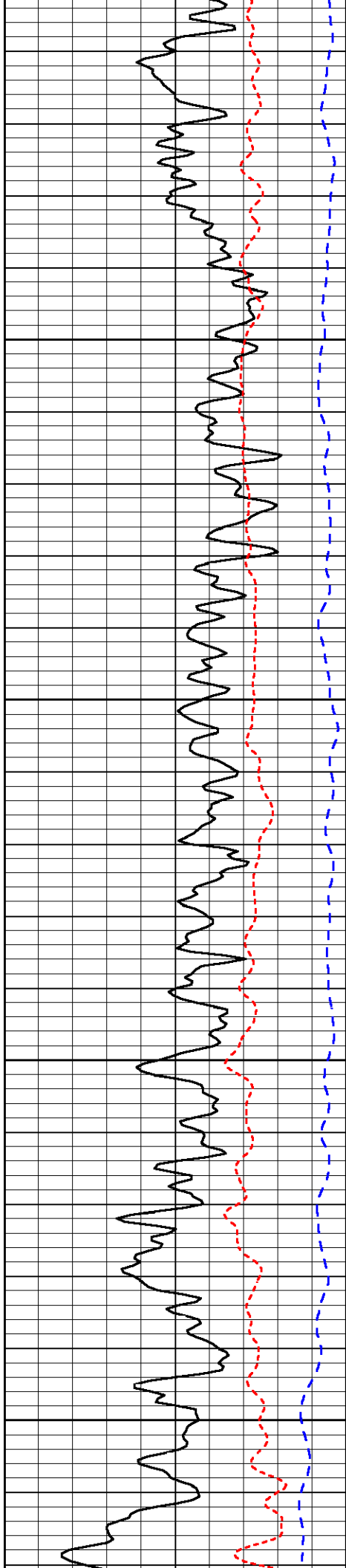
-100

-97

-97

-97



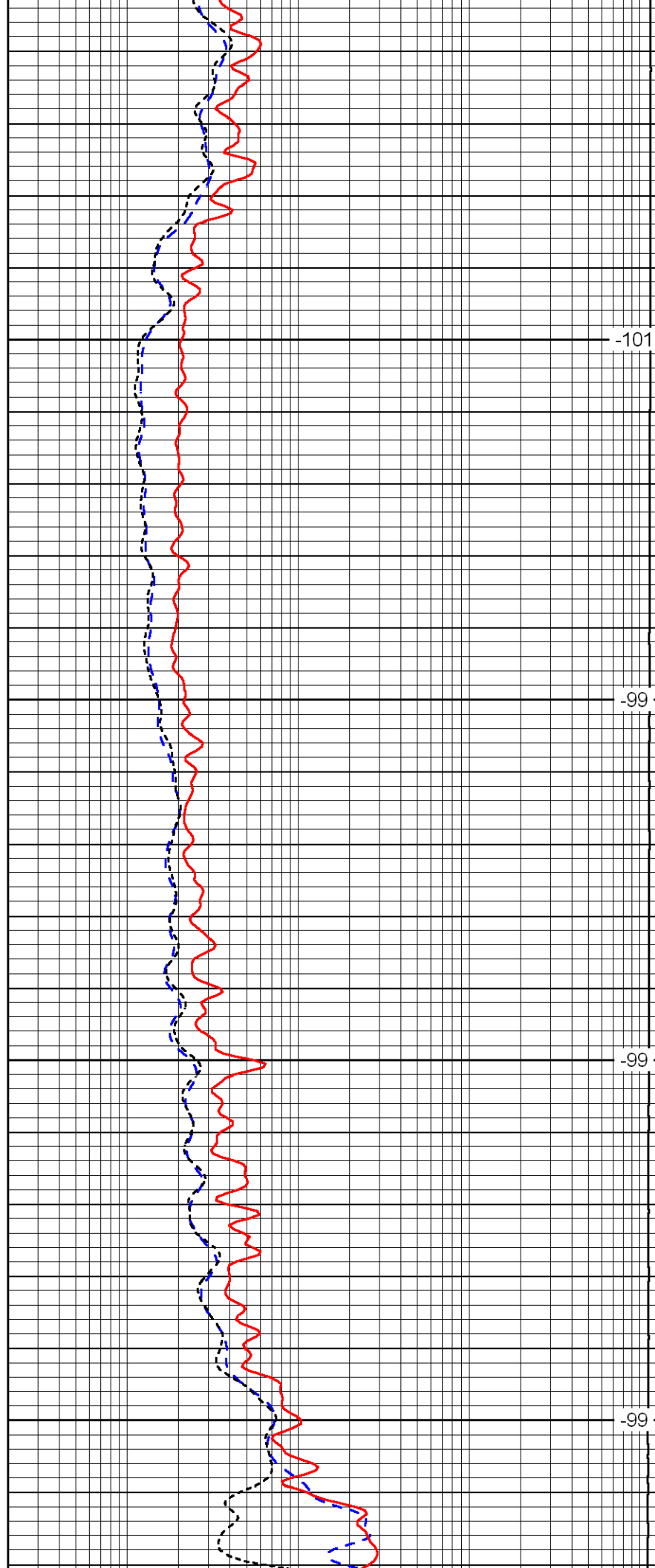


1000

1050

1100

1150

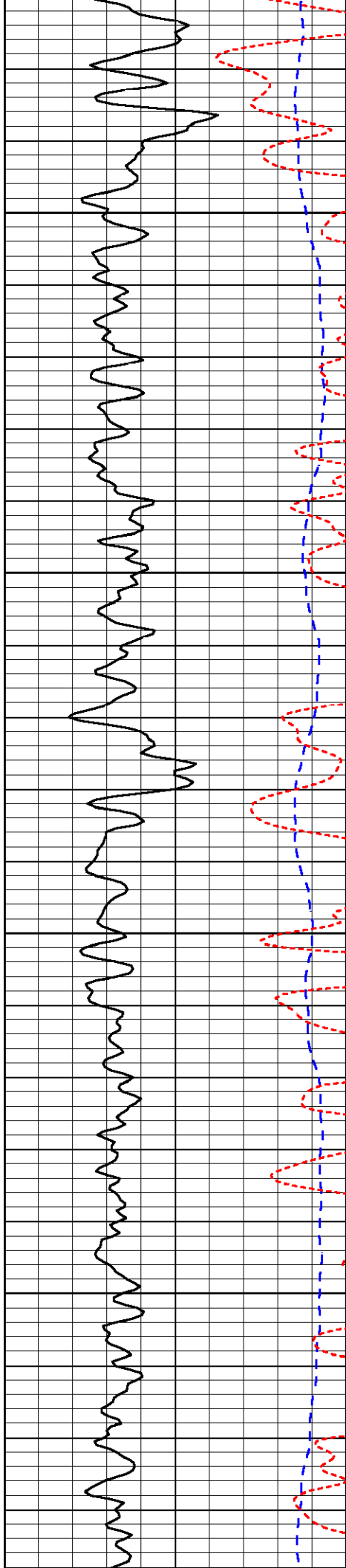


-101

-99

-99

-99

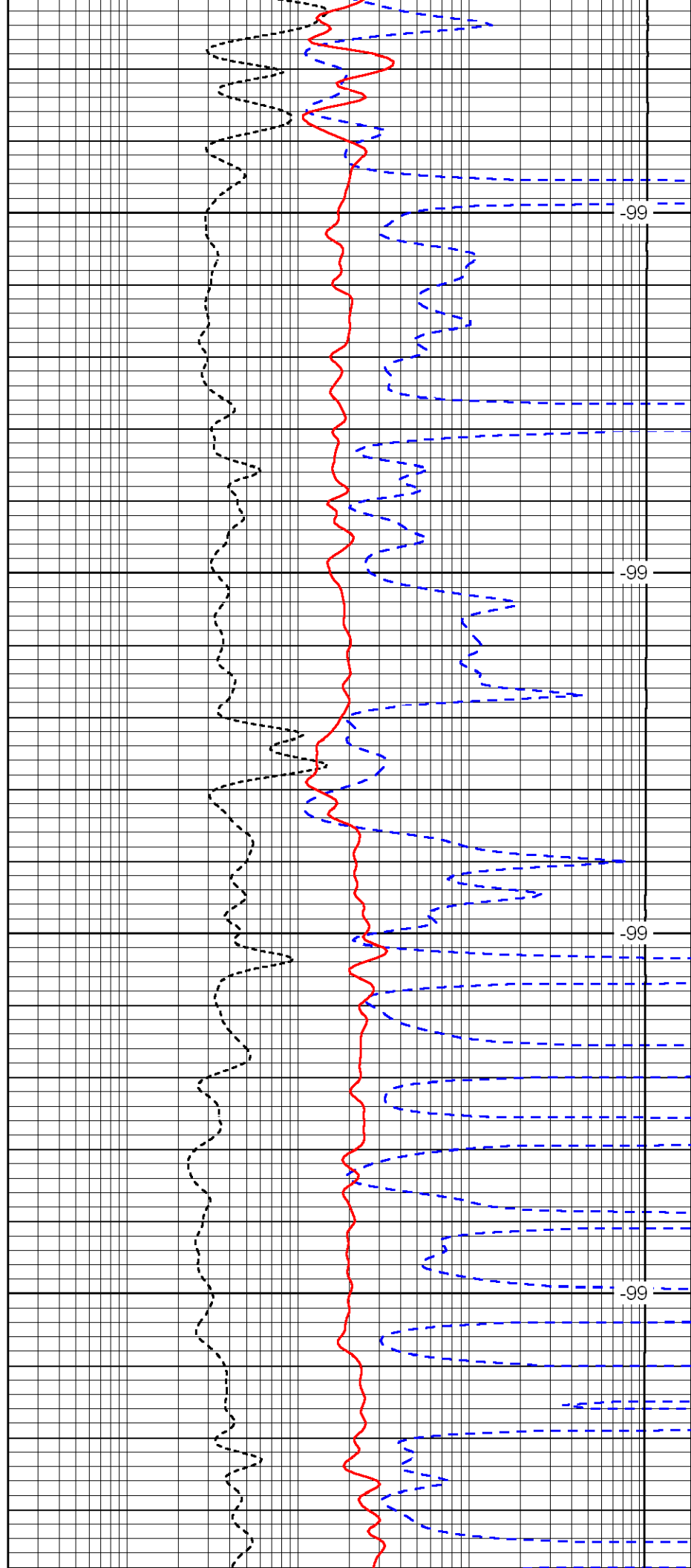


1200

1250

1300

1350

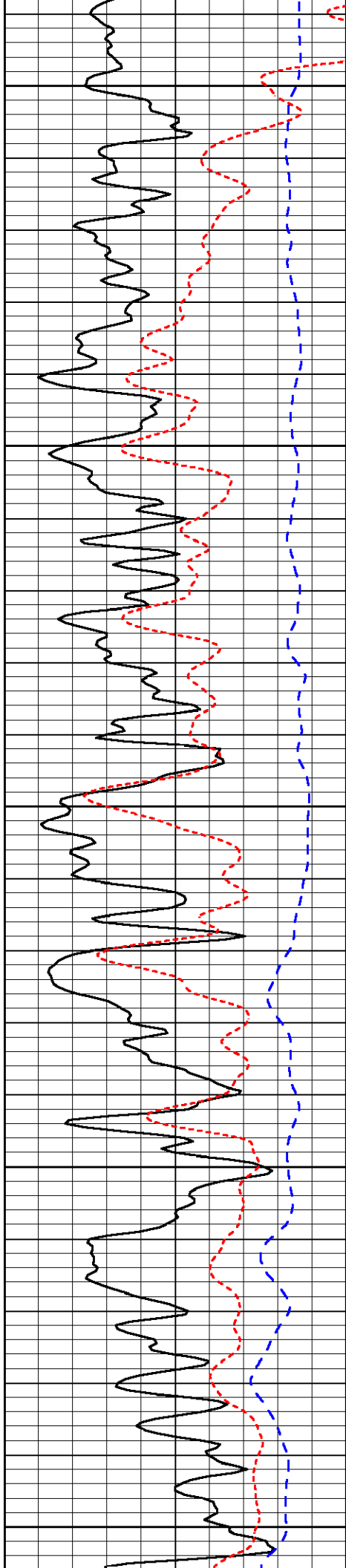


-99

-99

-99

-99



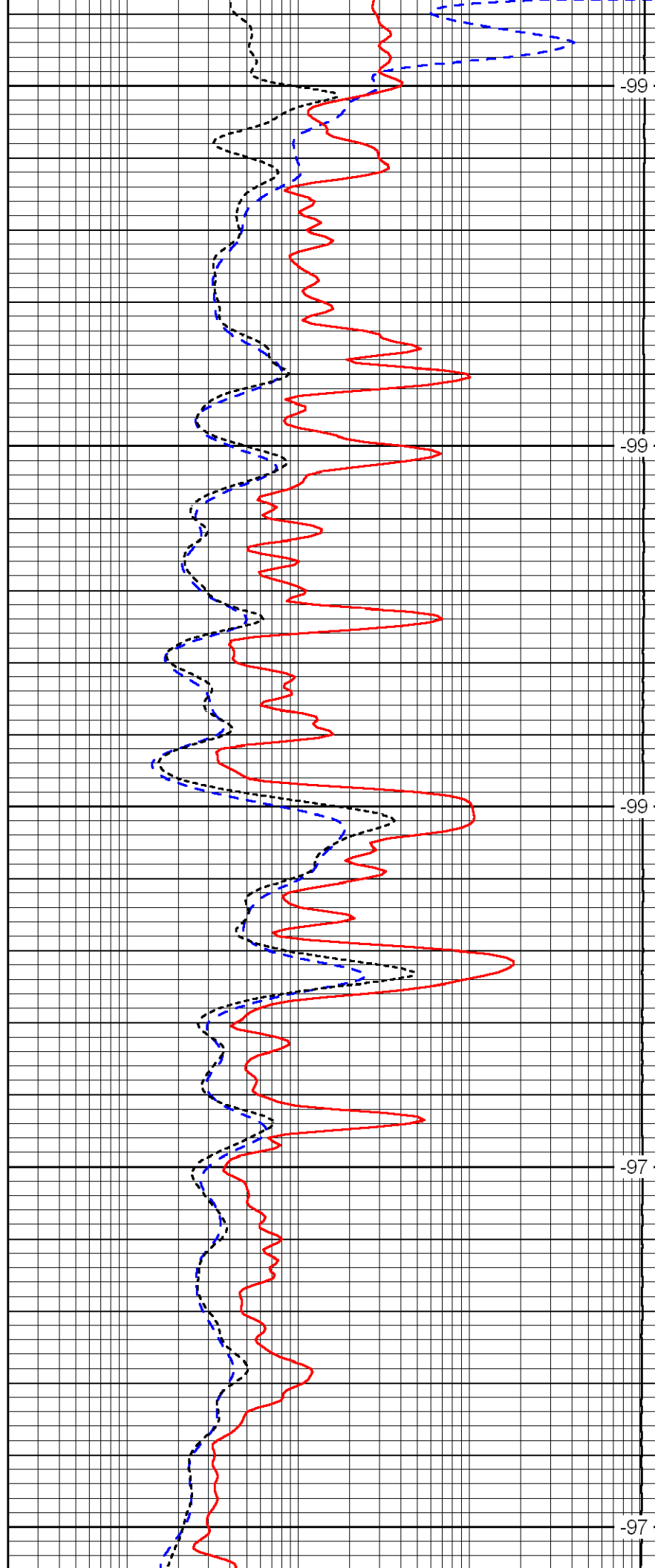
1400

1450

1500

1550

1600



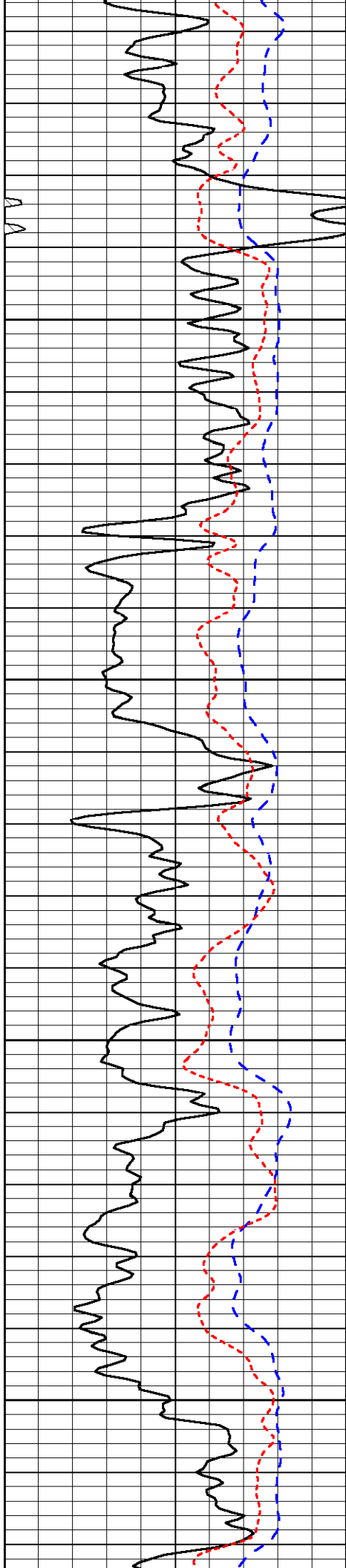
-99

-99

-99

-97

-97

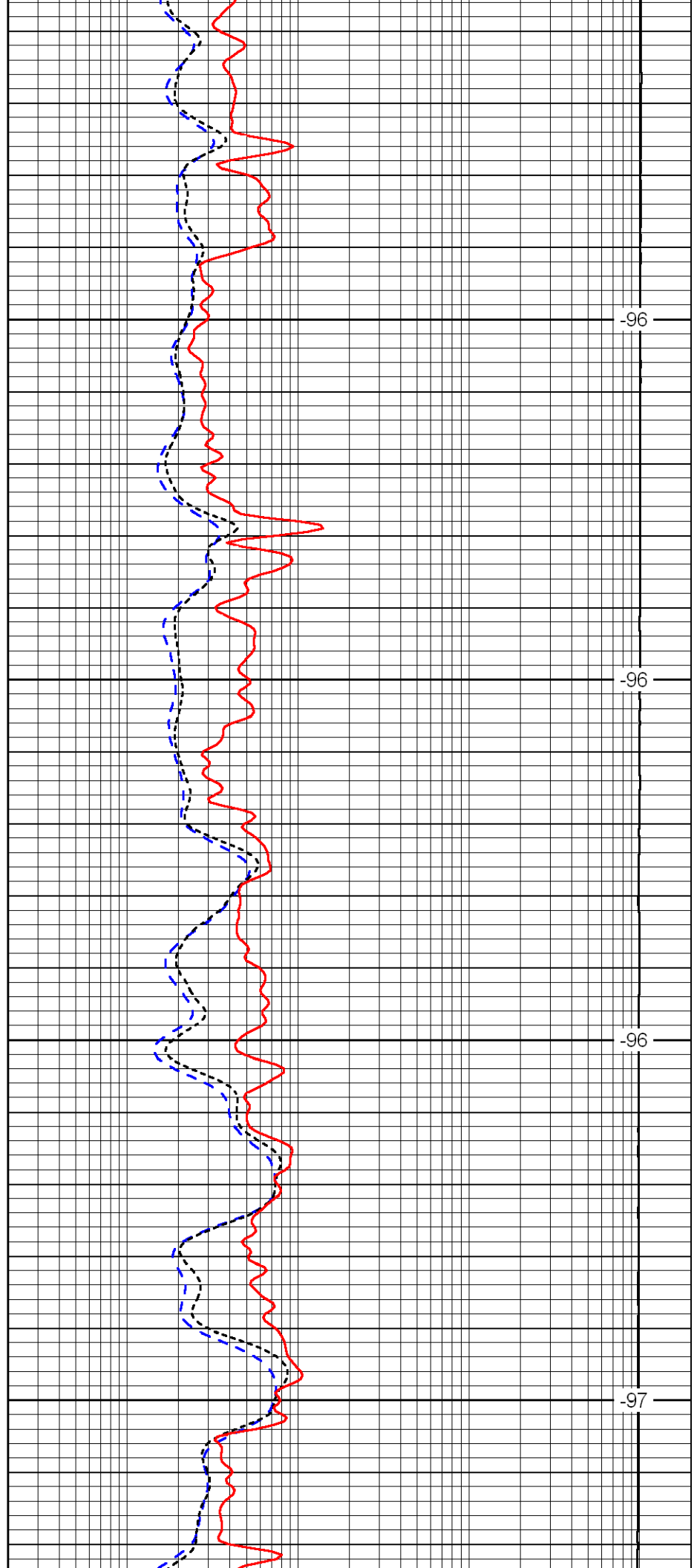


1650

1700

1750

1800

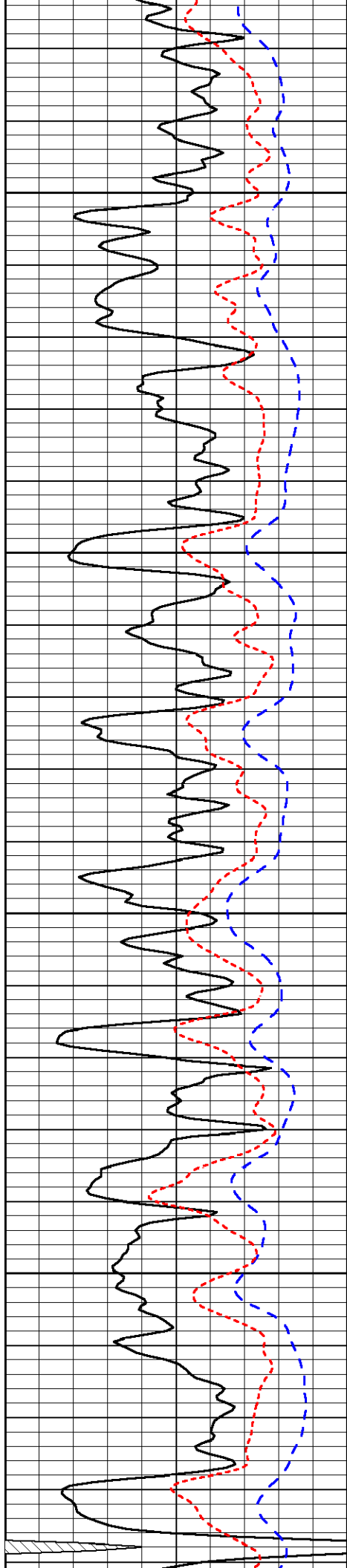


-96

-96

-96

-97

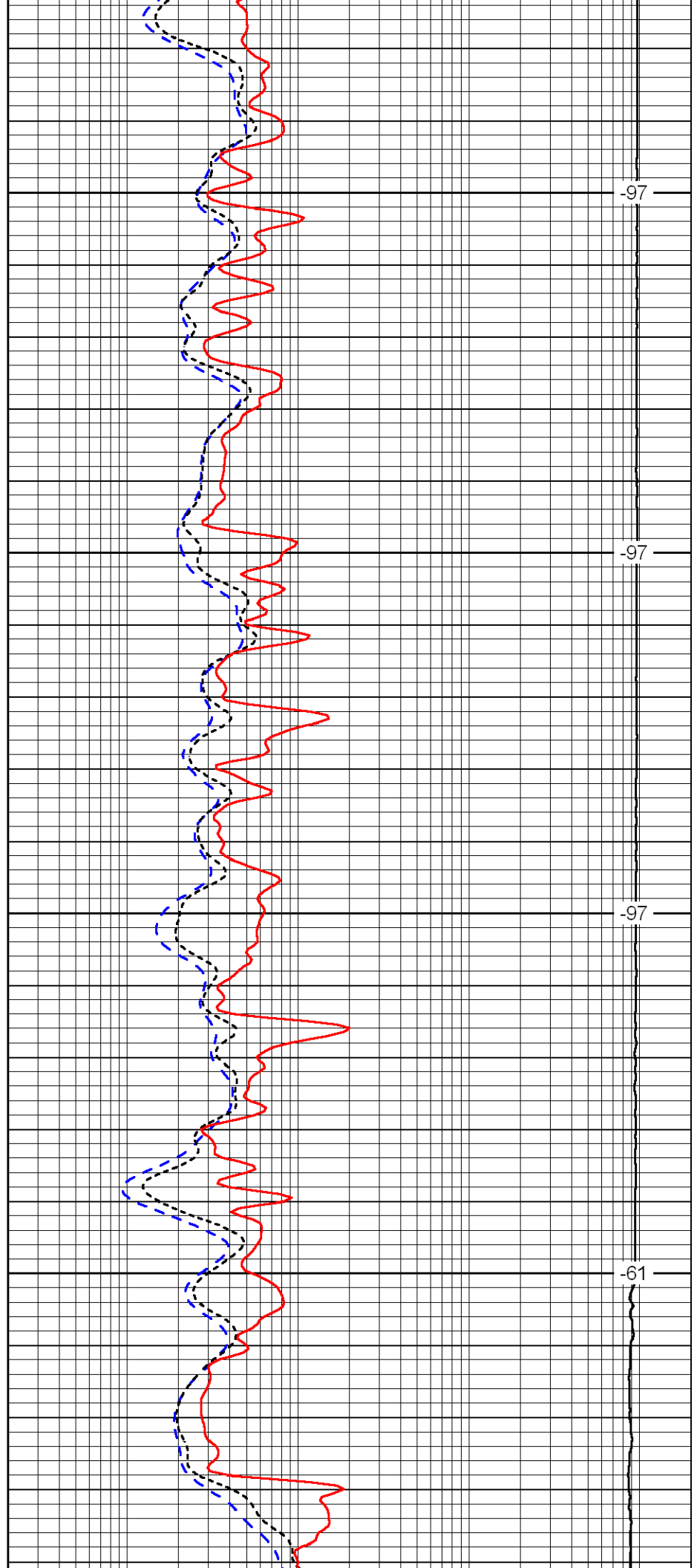


1850

1900

1950

2000

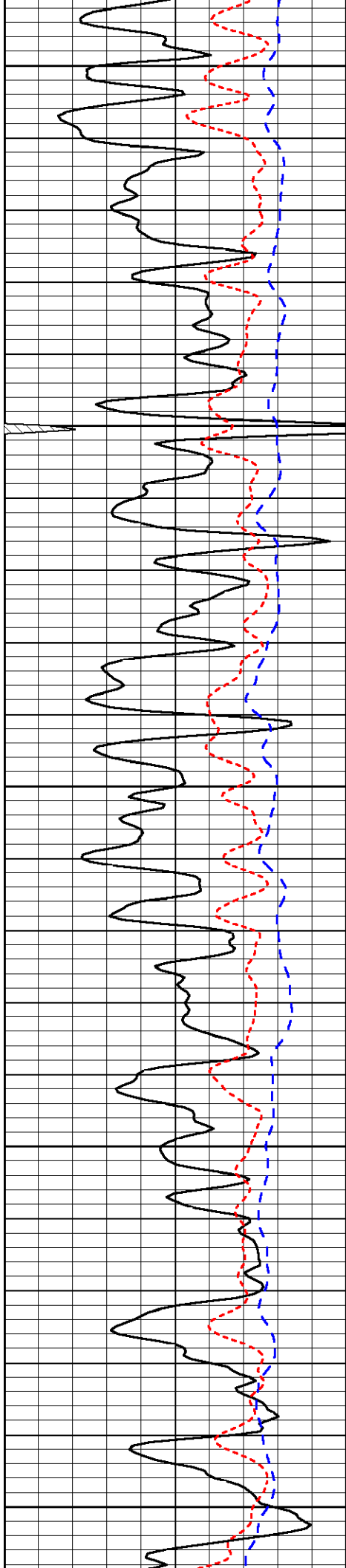


-97

-97

-97

-61



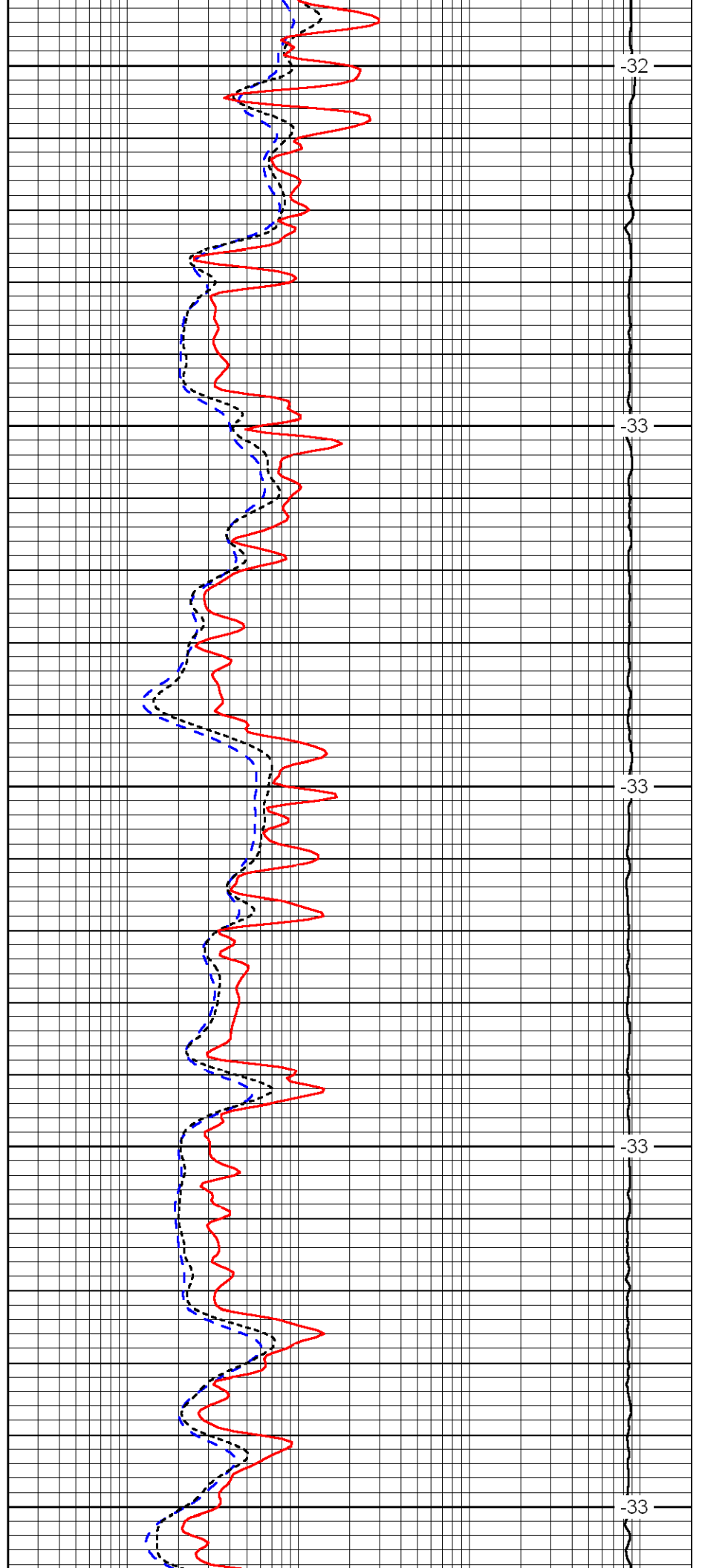
2050

2100

2150

2200

2250



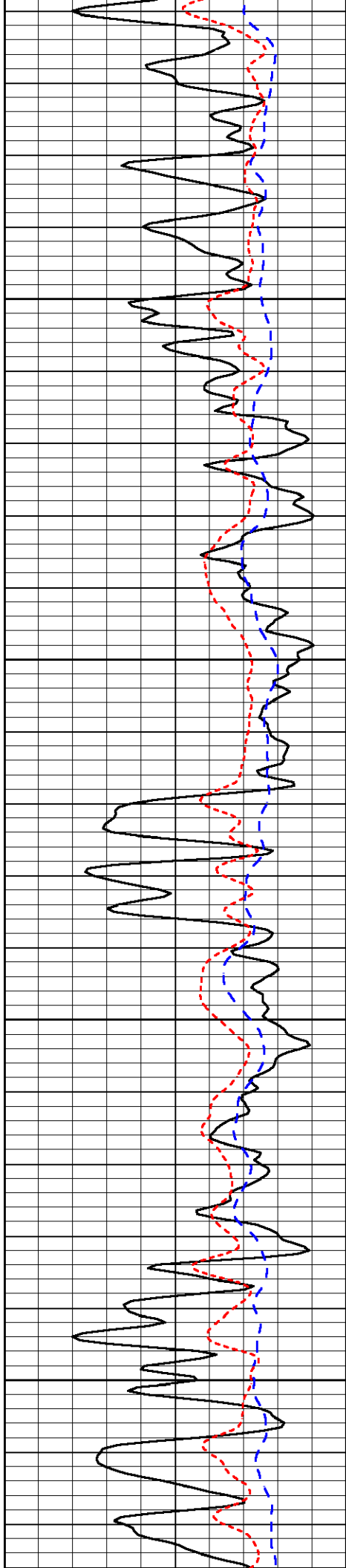
-32

-33

-33

-33

-33

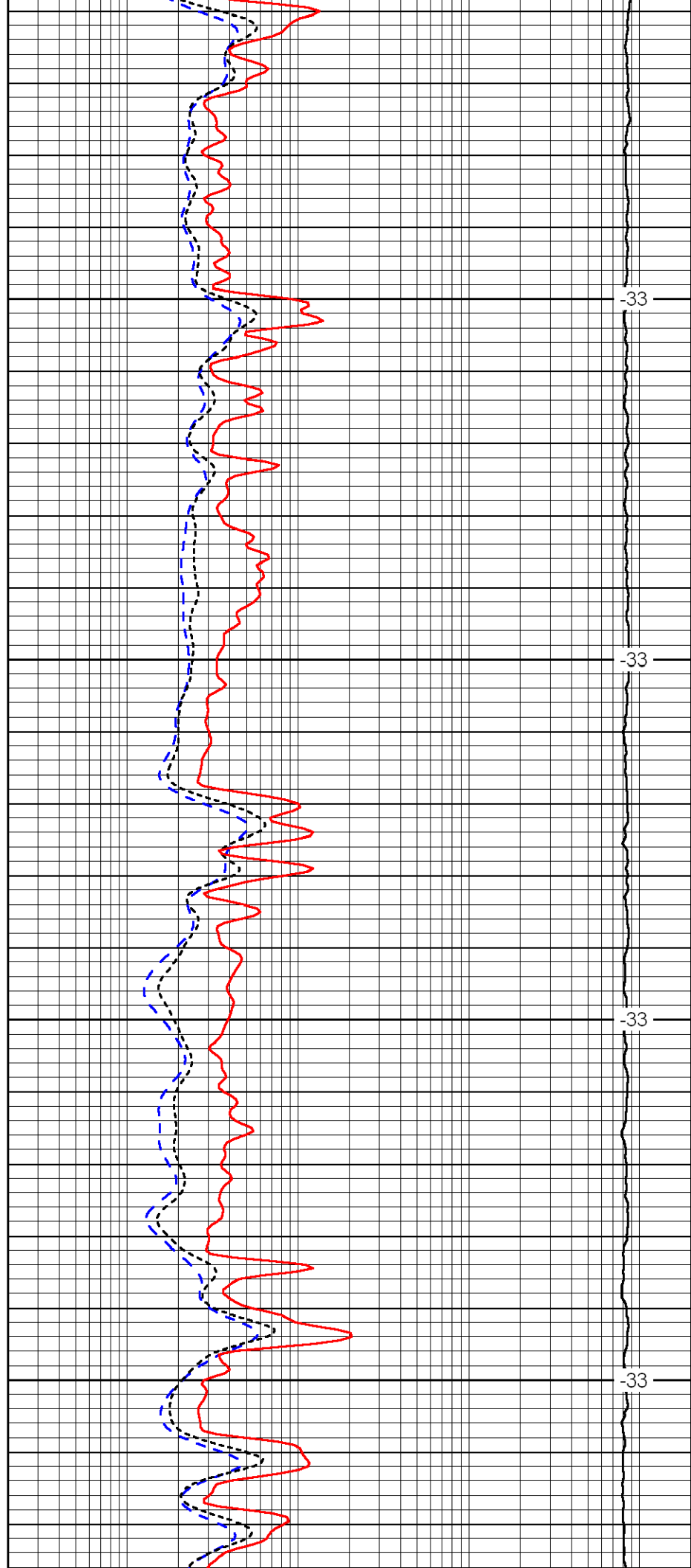


2300

2350

2400

2450

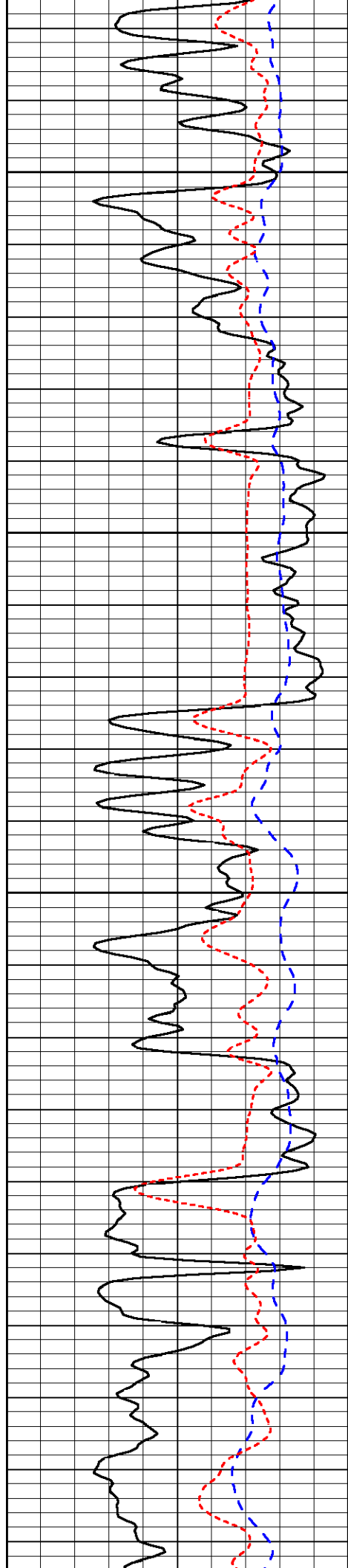


-33

-33

-33

-33

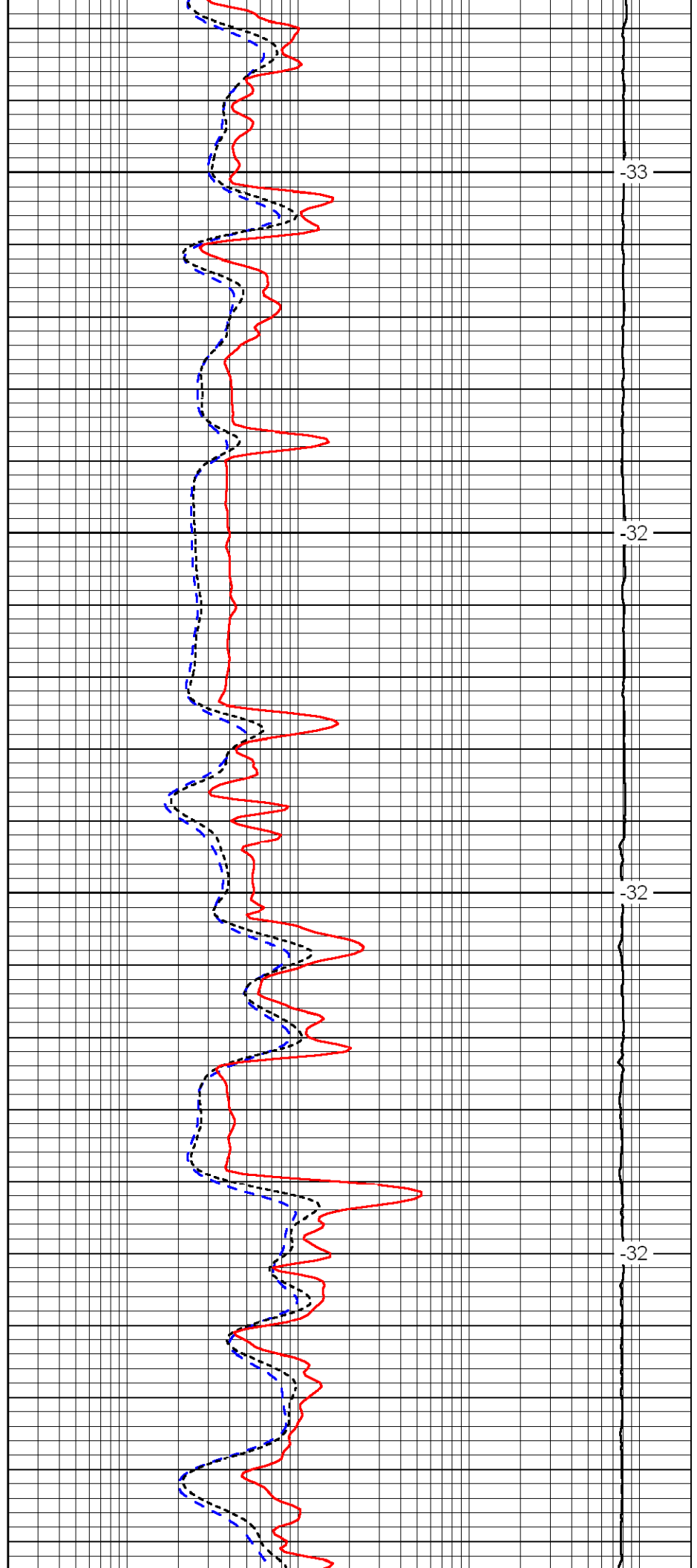


2500

2550

2600

2650

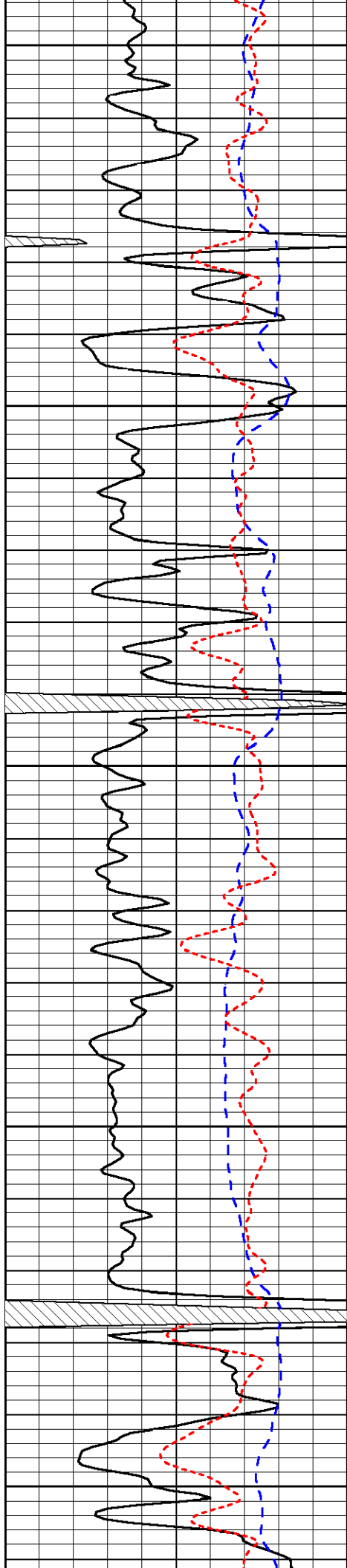


-33

-32

-32

-32



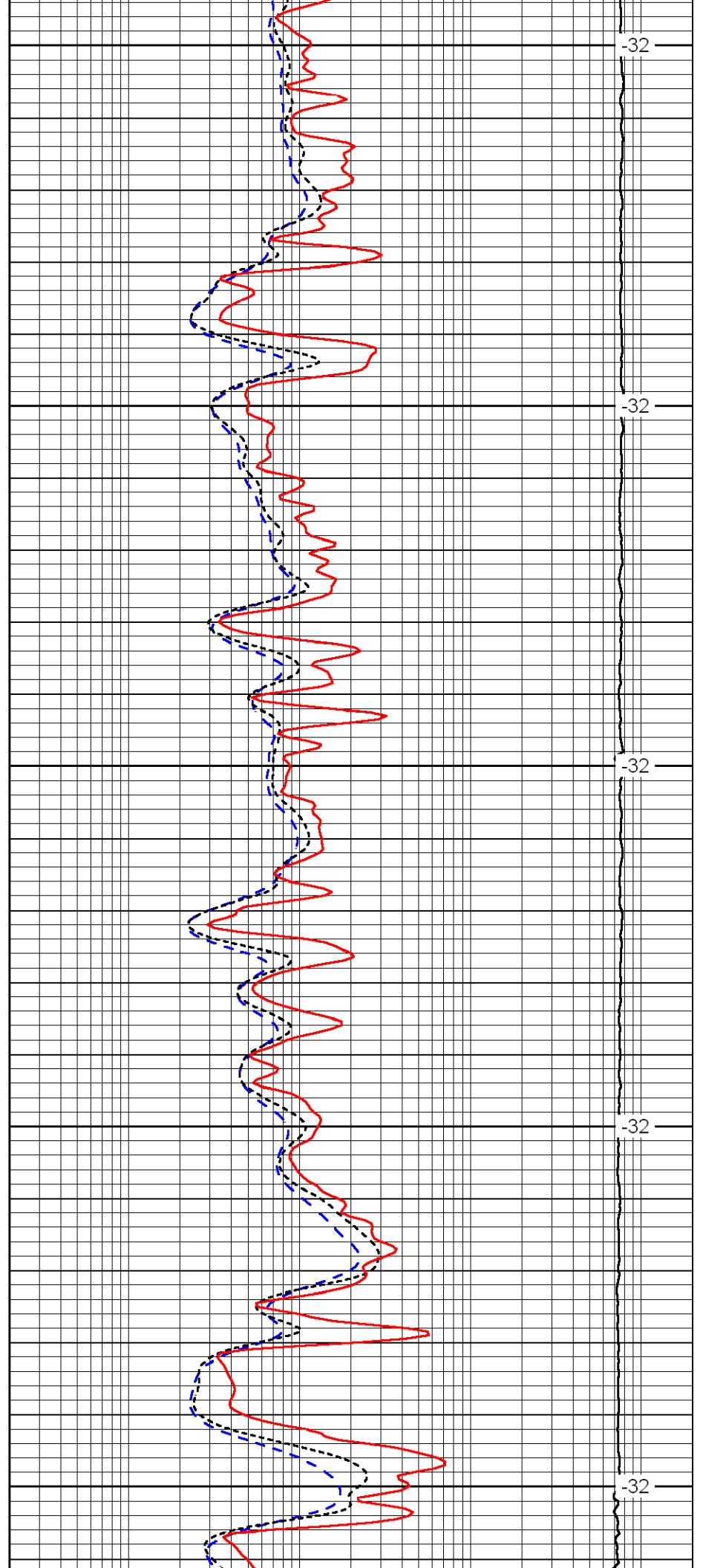
2700

2750

2800

2850

2900



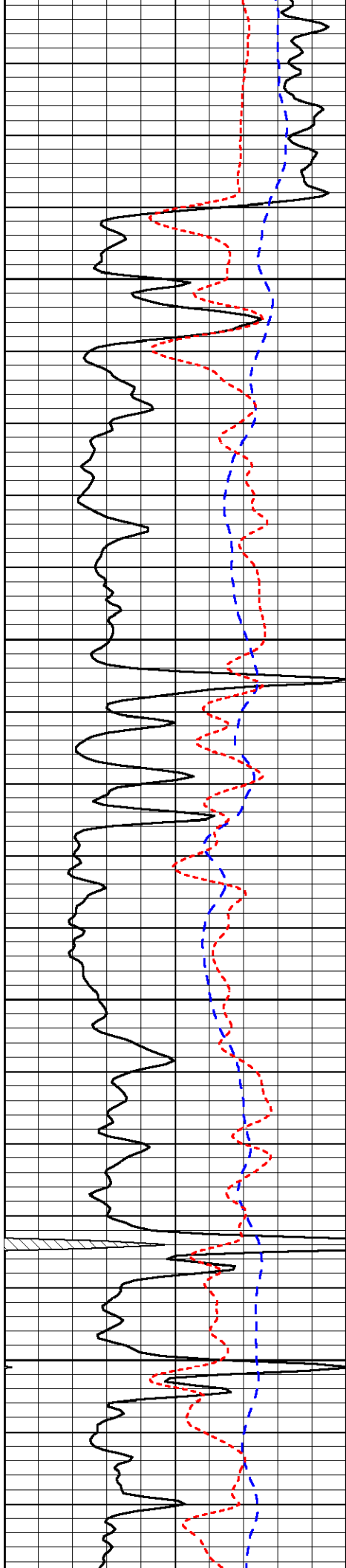
-32

-32

-32

-32

-32

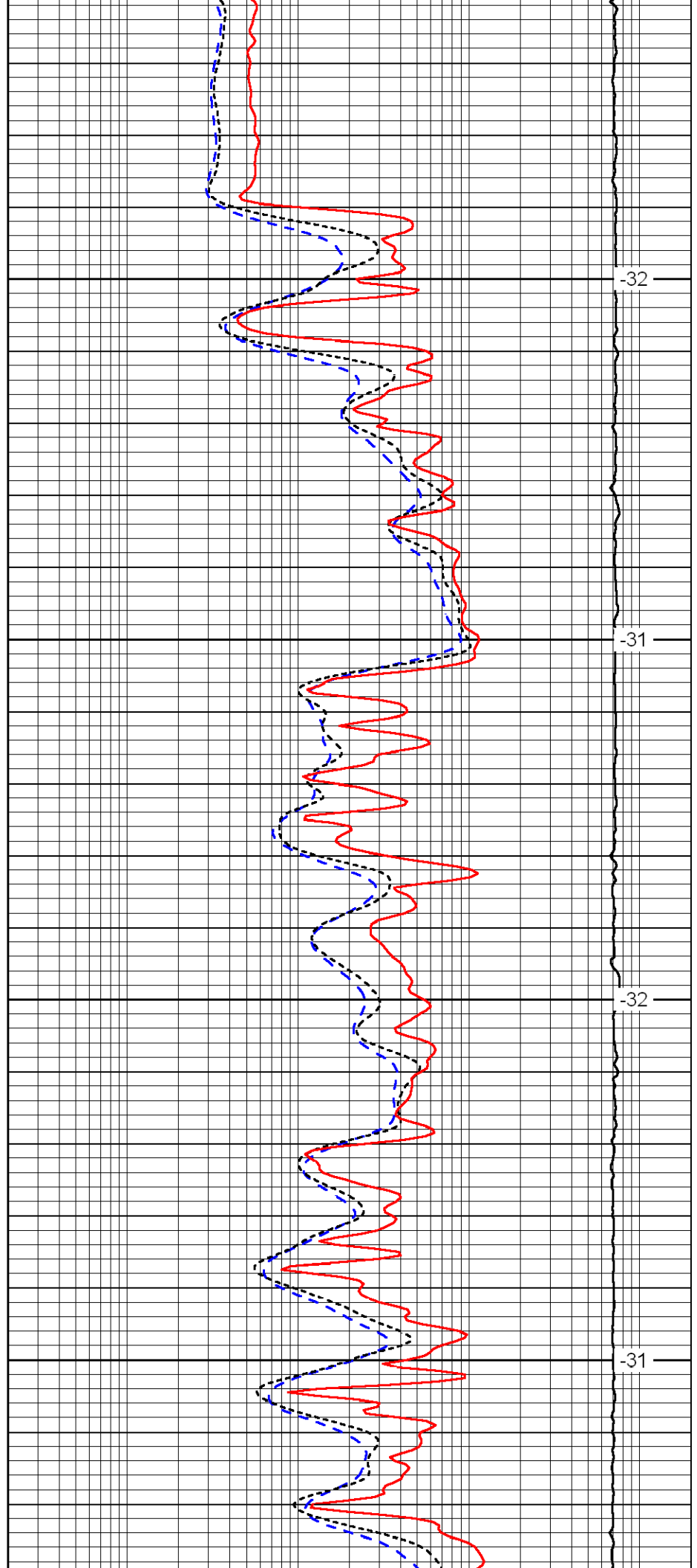


2950

3000

3050

3100

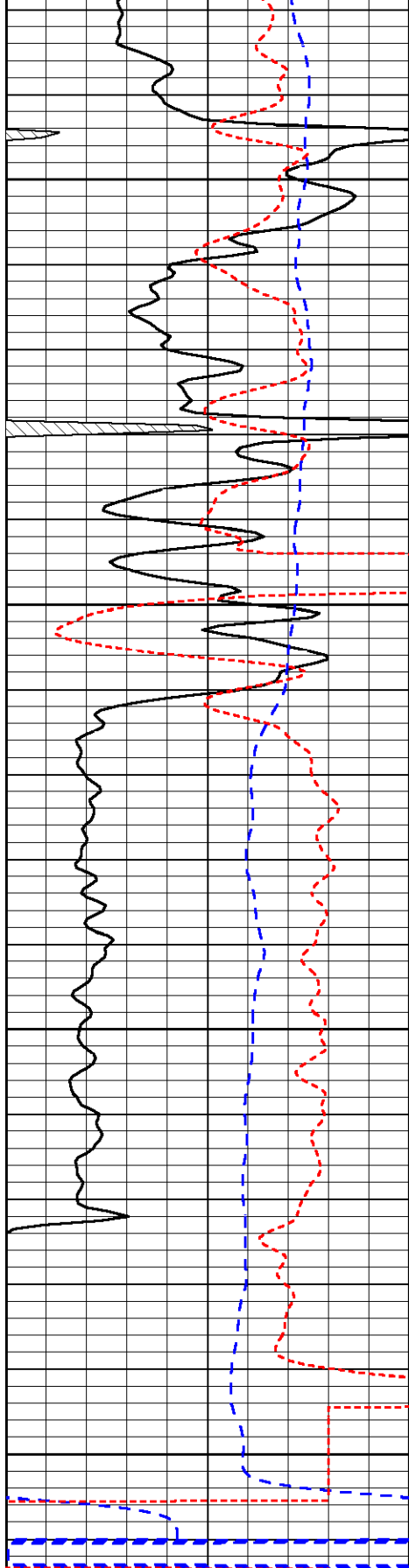


32

31

32

31



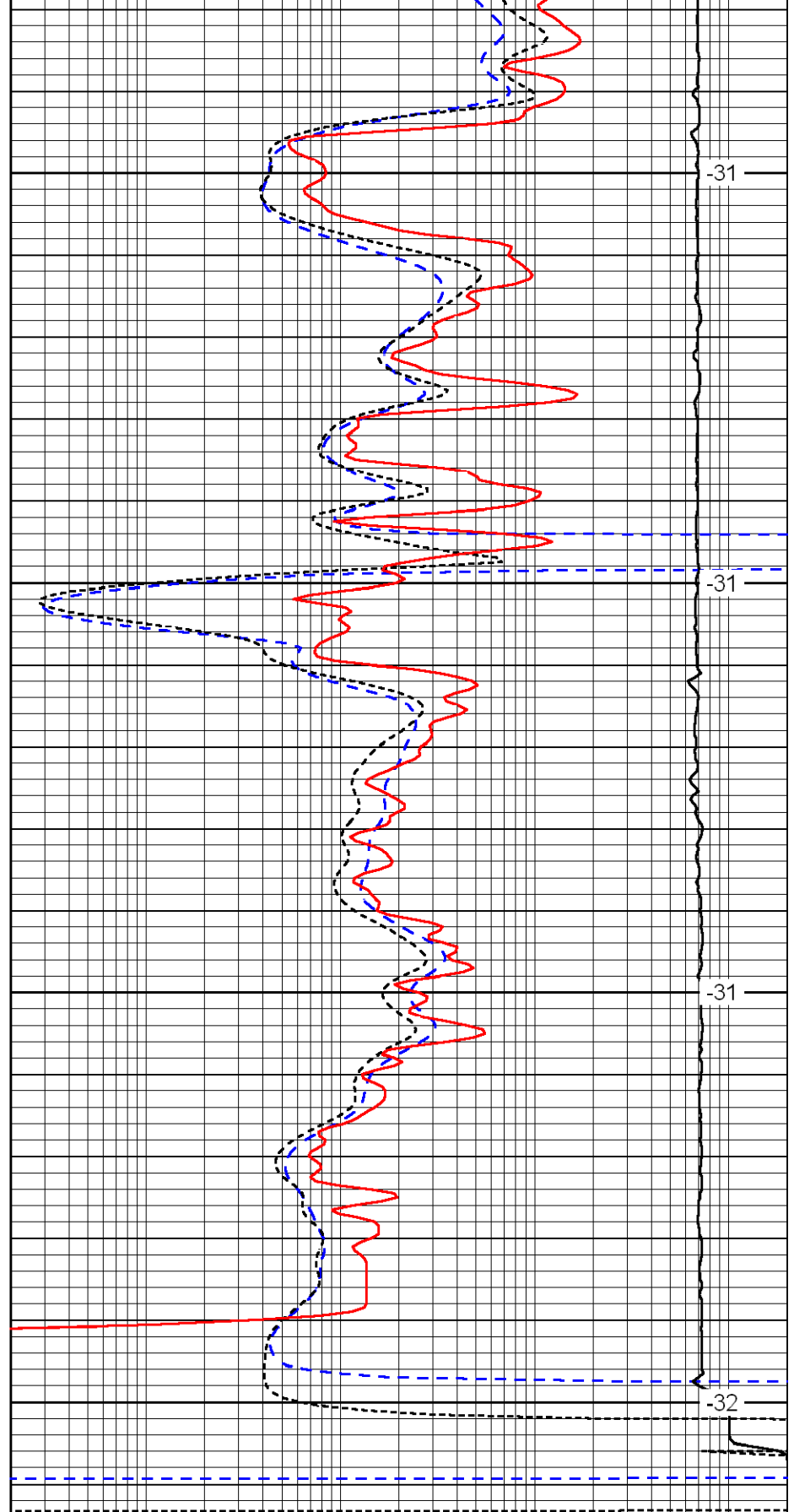
3150

3200

3250

3300

0	Gamma Ray	150
-200	SP	0
-160	Rxo / Rt	40



-31

-31

-31

-32

0.2	Deep Resistivity	2000
0.2	Medium Resistivity	2000
0.2	Shallow Resistivity	2000
15000	Line Tension	0

LSPD