



DIGITAL LOG (785) 625-3858

Dual Induction Log

API No.	15-135-25,167-00-00	
Company	DaMar Resources, Inc.	
Well	Evel Unit No. 1	
Field	Petersillie	
County	Ness	State Kansas
Location	1457' FNL & 2469' FEL	
Sec: 26	Twp: 20 S	Rge: 24 W
Other Services	CNL/CDL MEL	

Permanent Datum	Ground Level	Elevation 2258	K.B. 2263
Log Measured From	Kelly Bushing	5 Ft. Above Perm. Datum	D.F. 2258
Drilling Measured From	Kelly Bushing		G.L. 2258
Date	9/25/2010		
Run Number	One		
Depth Driller	4440		
Depth Logger	4441		
Bottom Logged Interval	4440		
Top Log Interval	300		
Casing Driller	8.625 @ 302		
Casing Logger	302		
Bit Size	7.875		
Type Fluid in Hole	Chemical		
Salinity, ppm CL	7.000		
Density / Viscosity	9.0	51	
pH / Fluid Loss	8.0	11.2	
Source of Sample	Flowline		
Rm @ Meas. Temp	.55	@ 80	
Rmf @ Meas. Temp	.41	@ 80	
Rmc @ Meas. Temp	.74	@ 80	
Source of Rmf / Rmc	Charts		
Rm @ BHT	.36	@ 122	
Operating Rig Time	4 Hours		
Max Rec. Temp. F	122		
Equipment Number	4		
Location	Hays		
Recorded By	K Bange		
Witnessed By	Josh Austin		

<<< Fold Here >>>

All interpretations are opinions based on inferences from electrical or other measurements and we cannot and do not guarantee the accuracy or correctness of any interpretation, and we shall not, except in the case of gross or willful negligence on our part, be liable or responsible for any loss, costs, damages, or expenses incurred or sustained by anyone resulting from any interpretation made by any of our officers, agents or employees. These interpretations are also subject to our general terms and conditions set out in our current Price Schedule.

Comments

Thank you for using Log-Tech, Inc.
(785) 625-3858

Ness City, 11 S to county rd 536, 2 W, 1 S to 10 rd, 1 W to P rd, 1/2 N, E into

Database File: c:\warrior\data\damar_evel unit no. 1\damar.db
 Dataset Pathname: dil\damar2in
 Presentation Format: dil2in
 Dataset Creation: Sat Sep 25 18:14:41 2010
 Charted by: Depth in Feet scaled 1:600

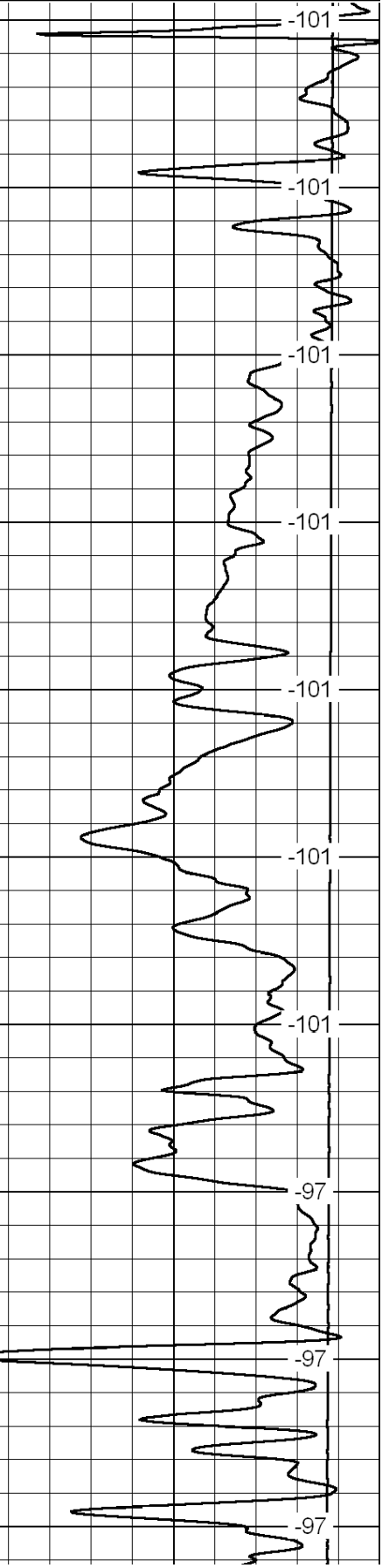
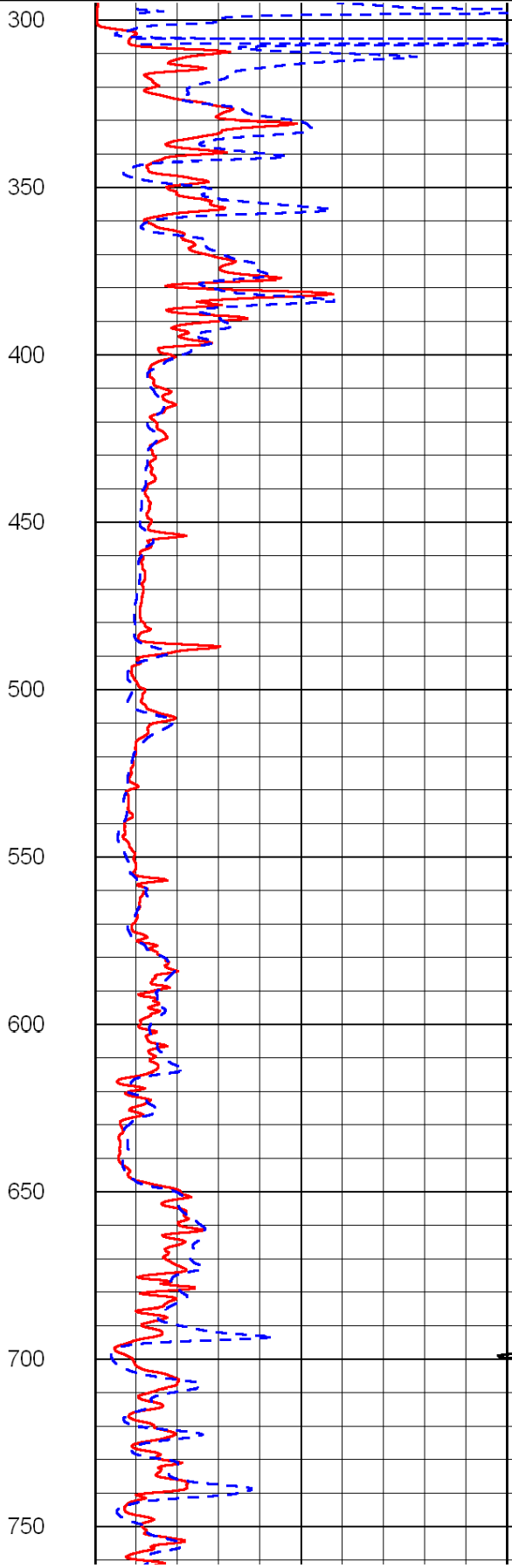
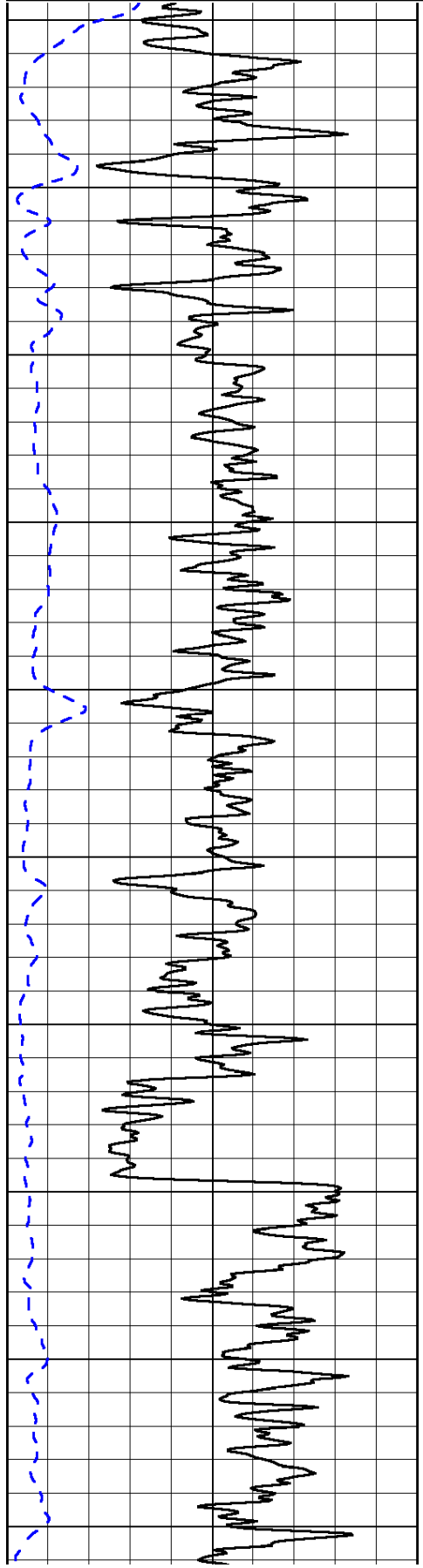
0	Gamma Ray	150
-200	SP (mV)	0

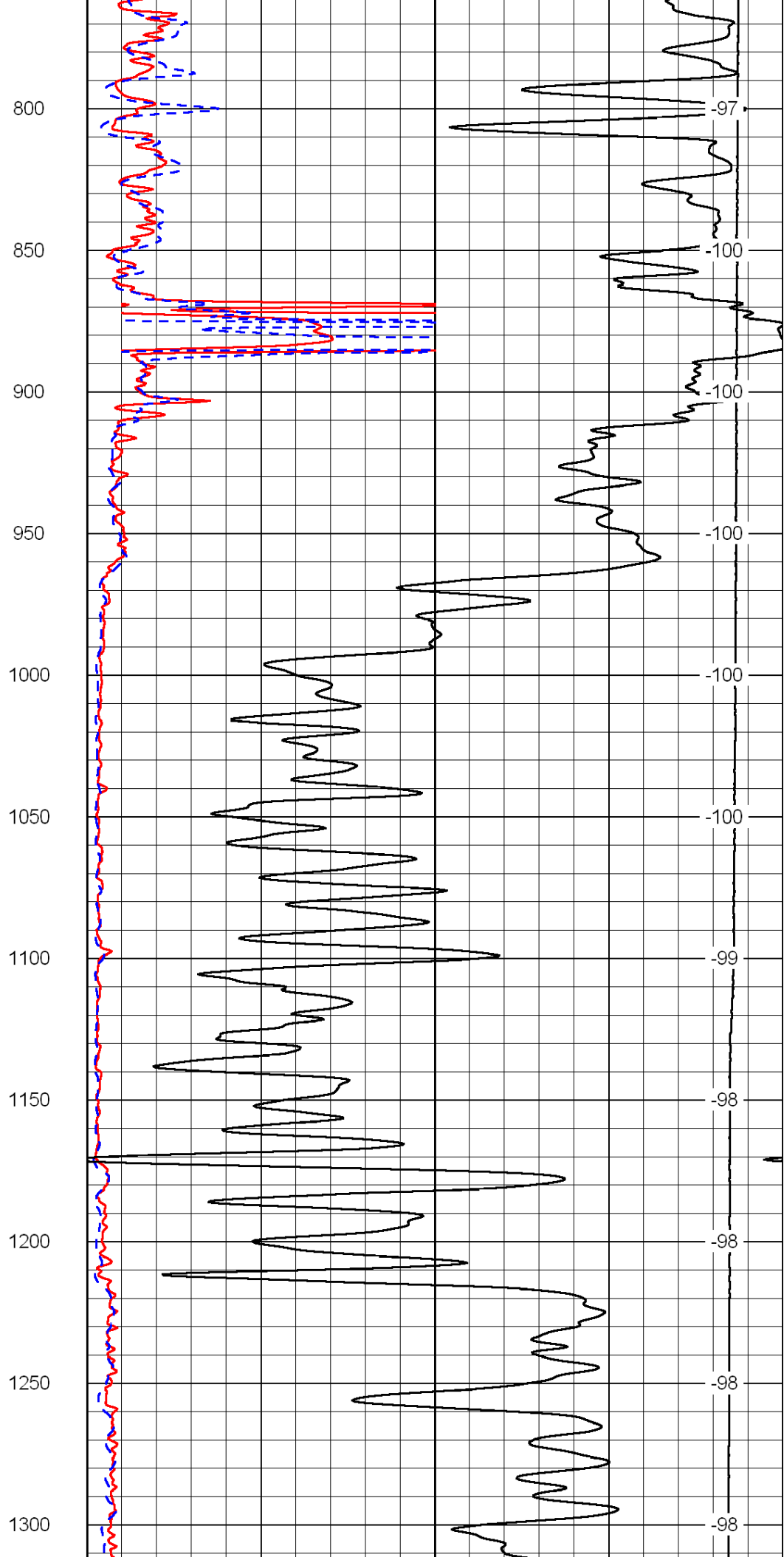
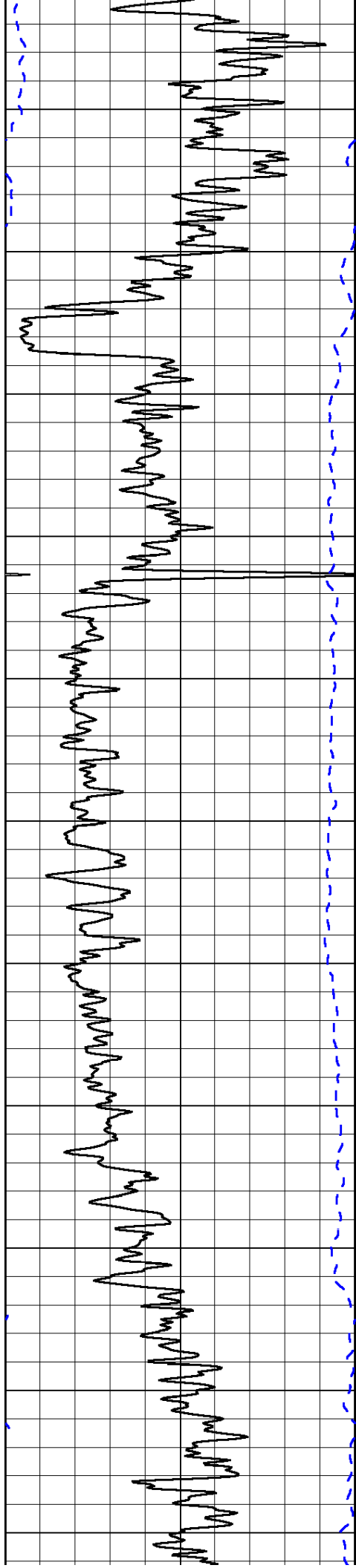
0	Shallow Resistivity	50
0	Deep Resistivity	50

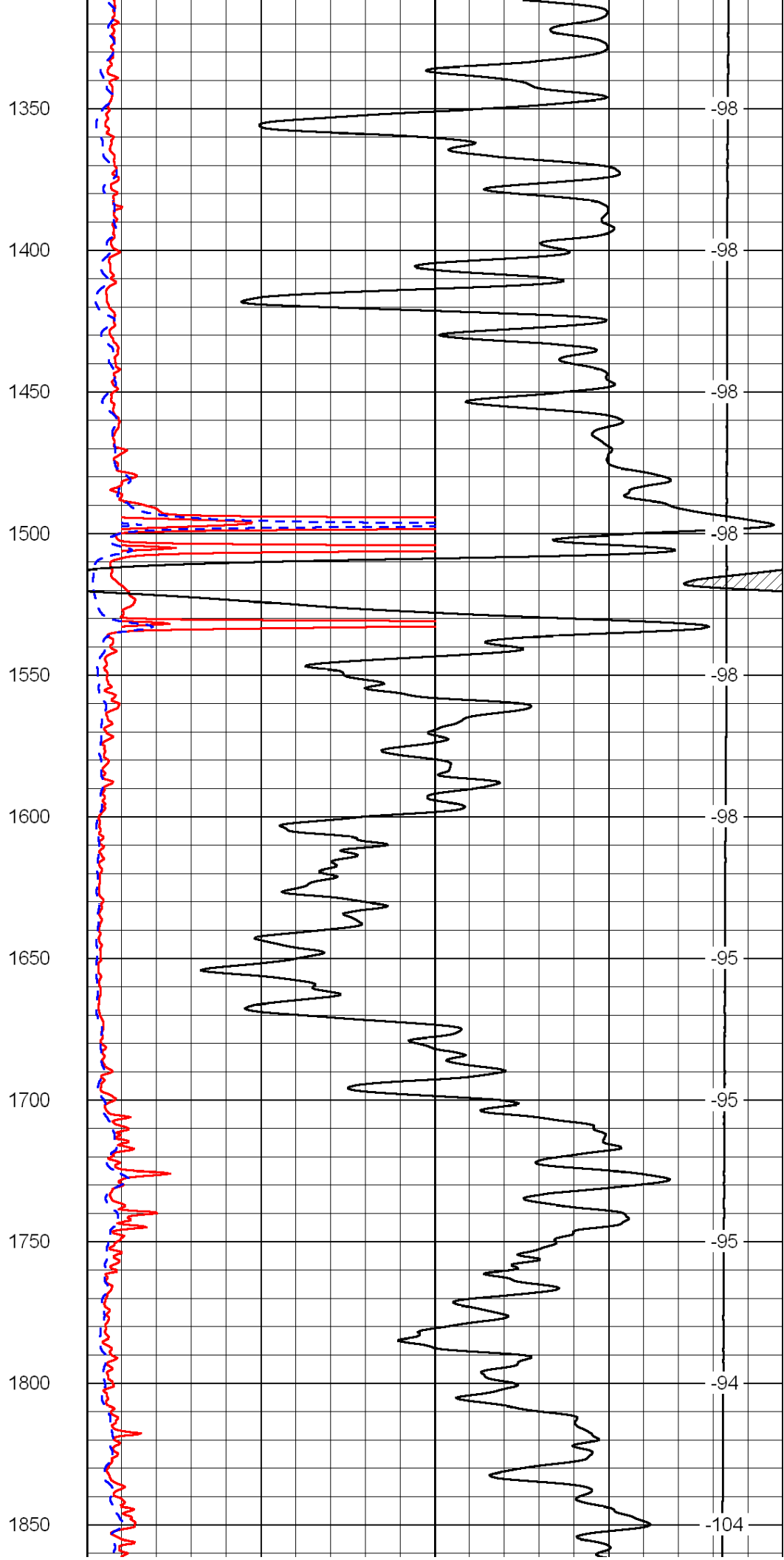
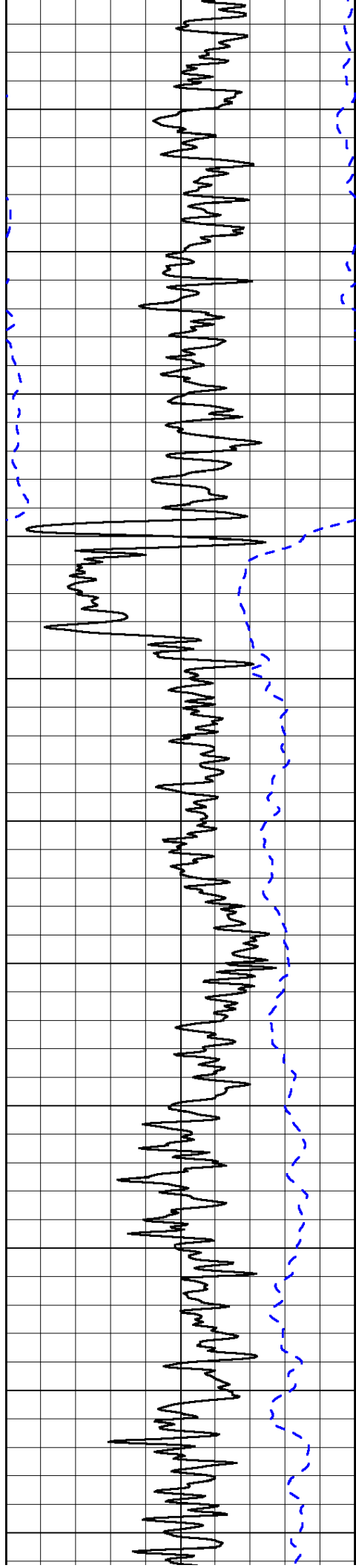
LSPD

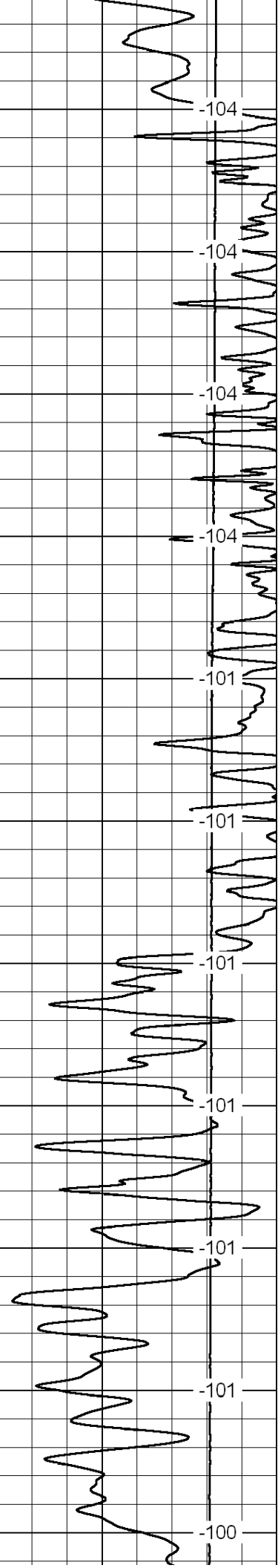
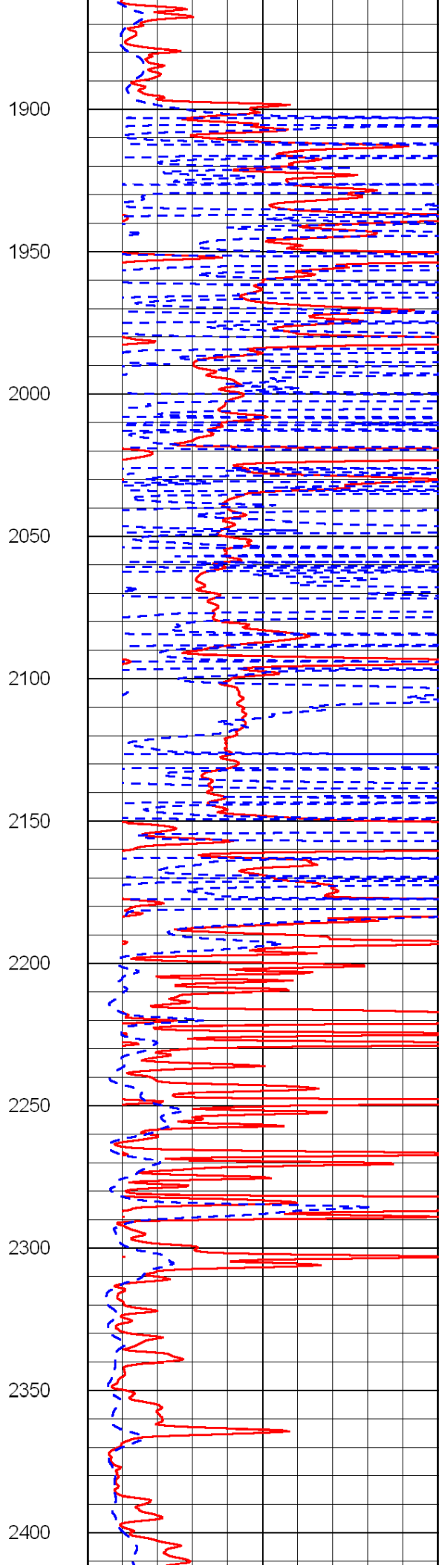
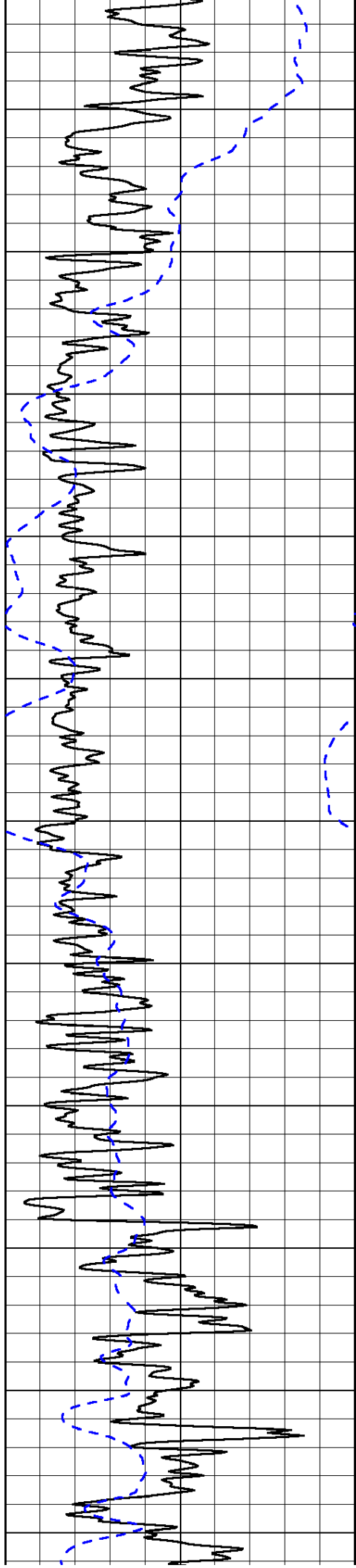
1000	Conductivity	0
15000	Line Tension	0

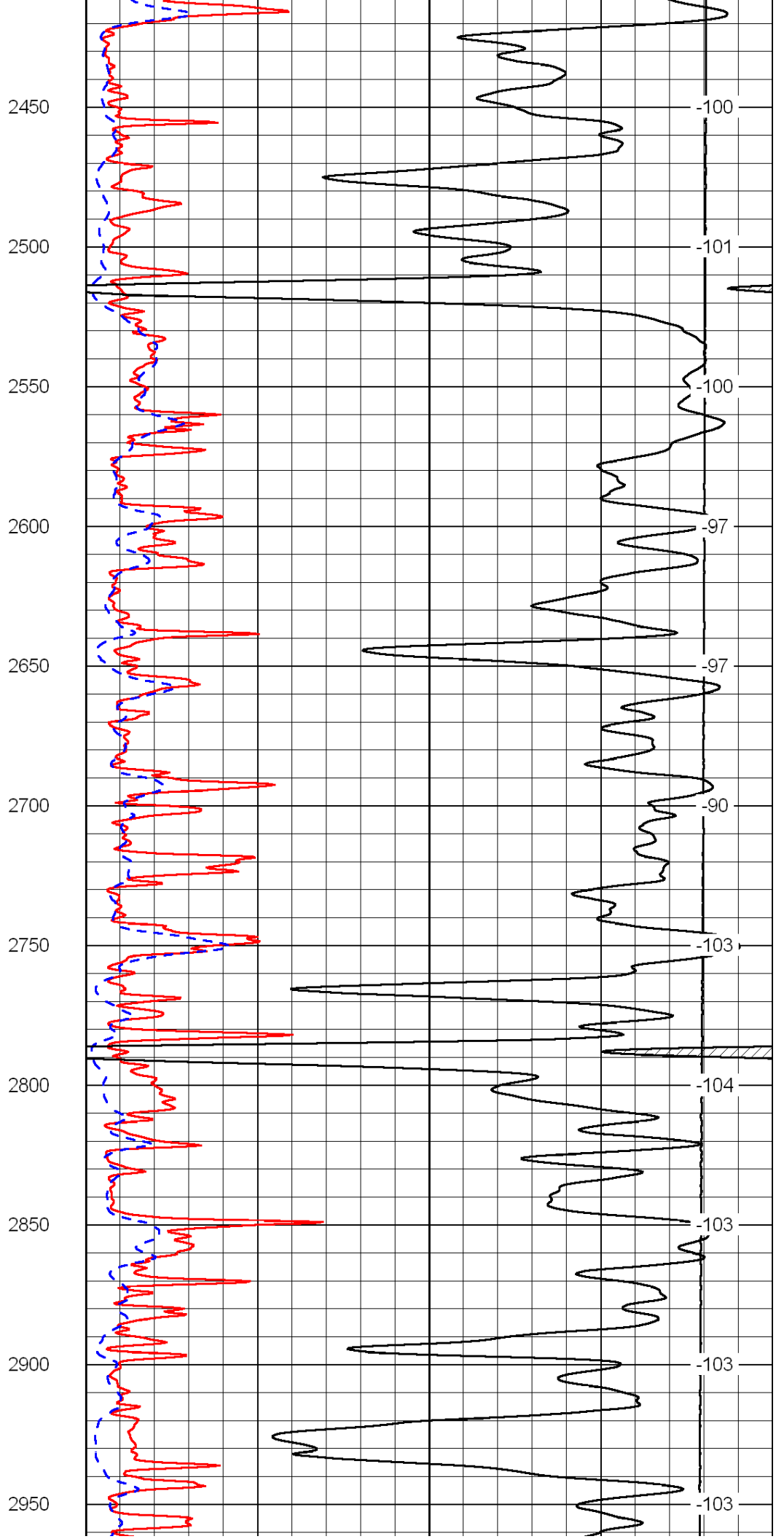
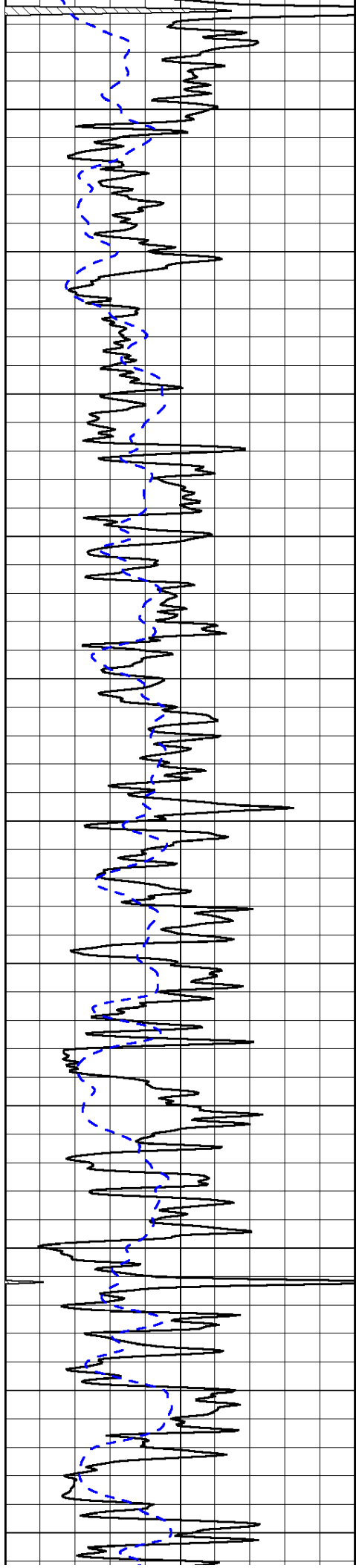
50	Shallow Resistivity	500
50	Deep Resistivity	500

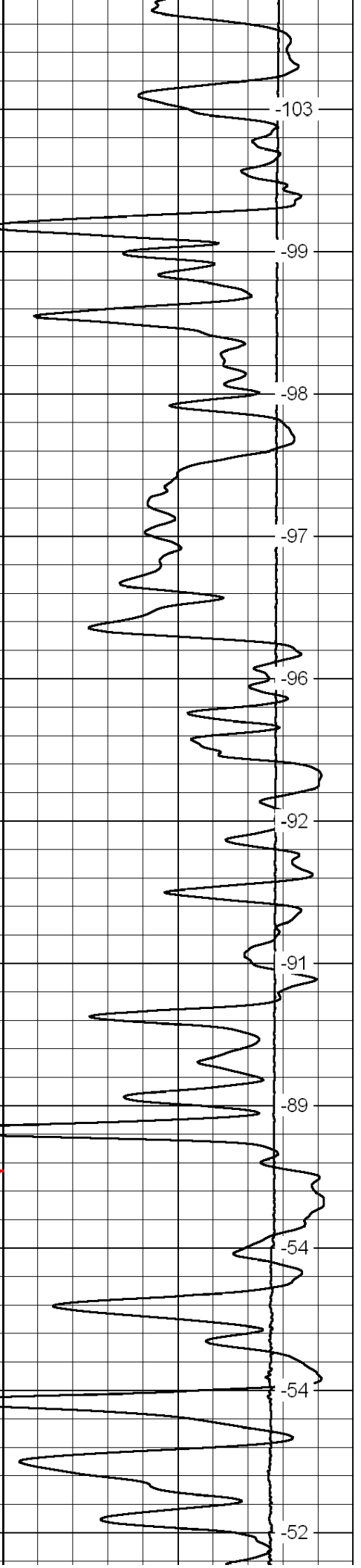
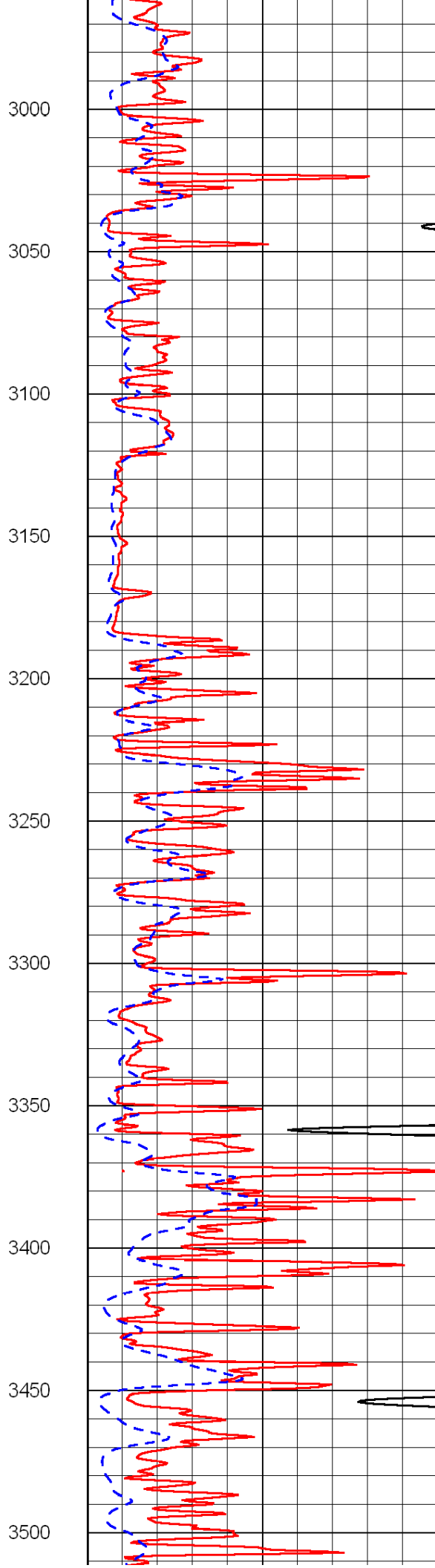
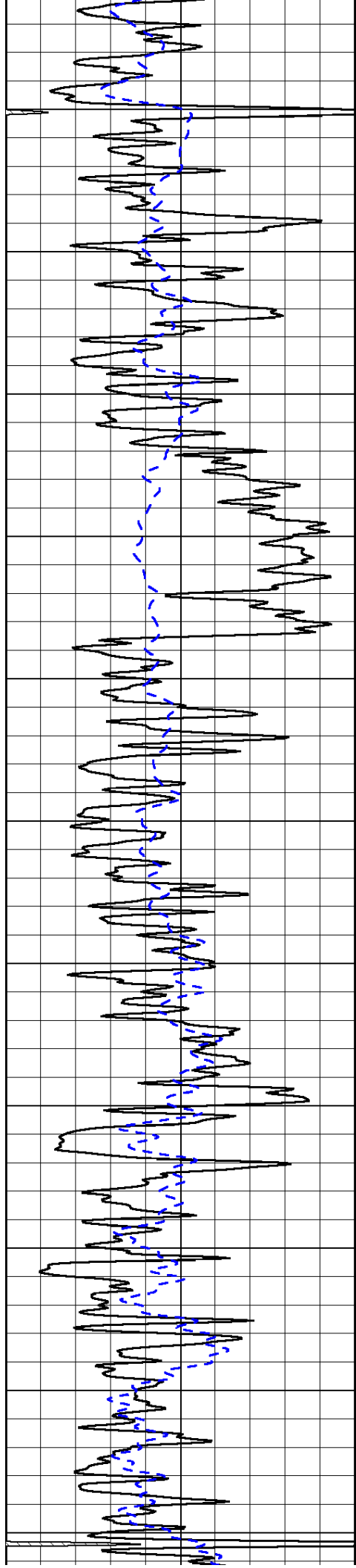


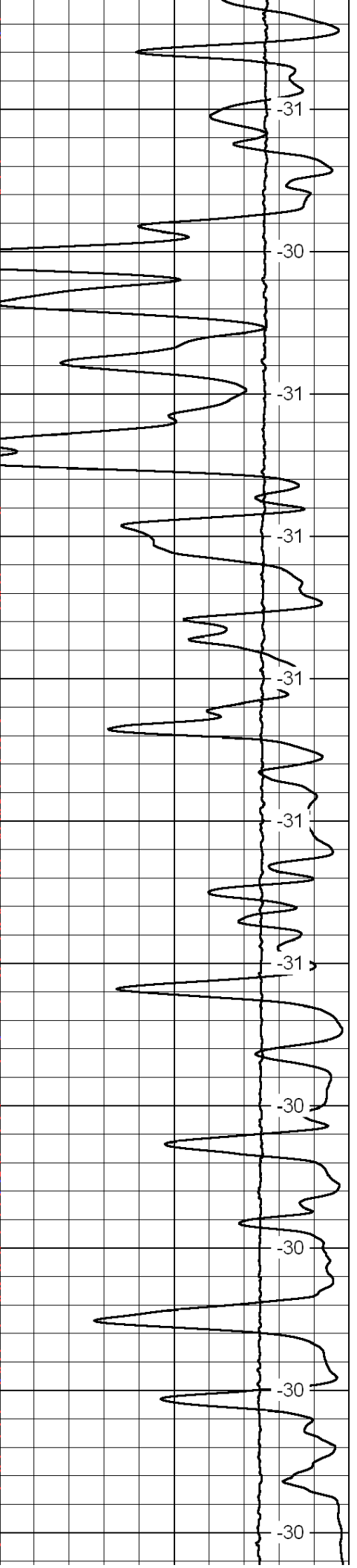
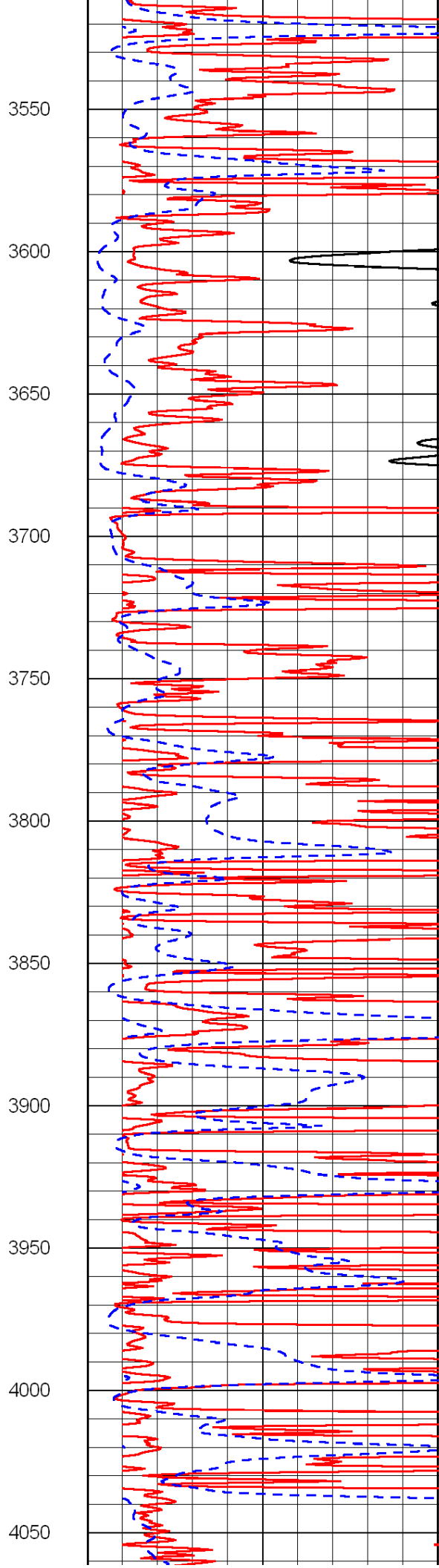
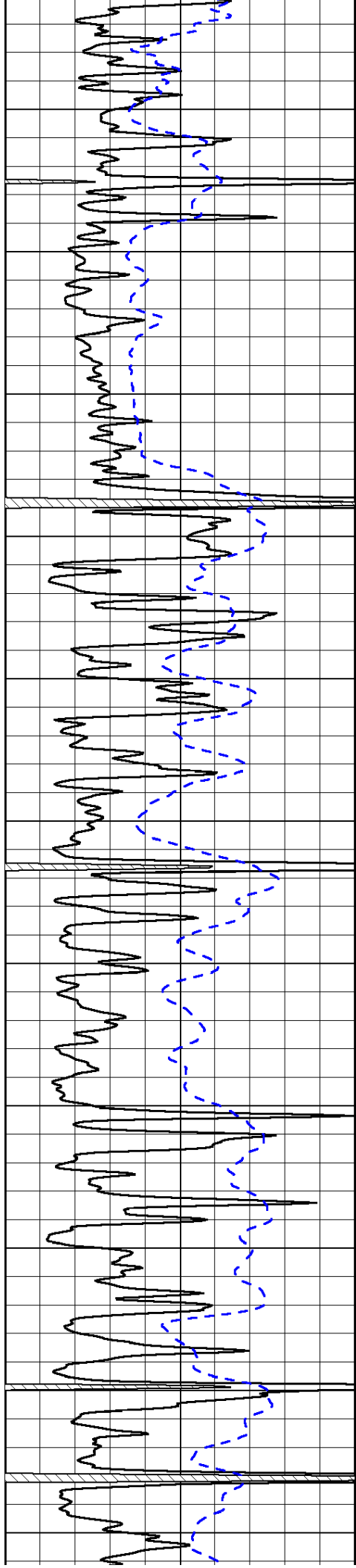


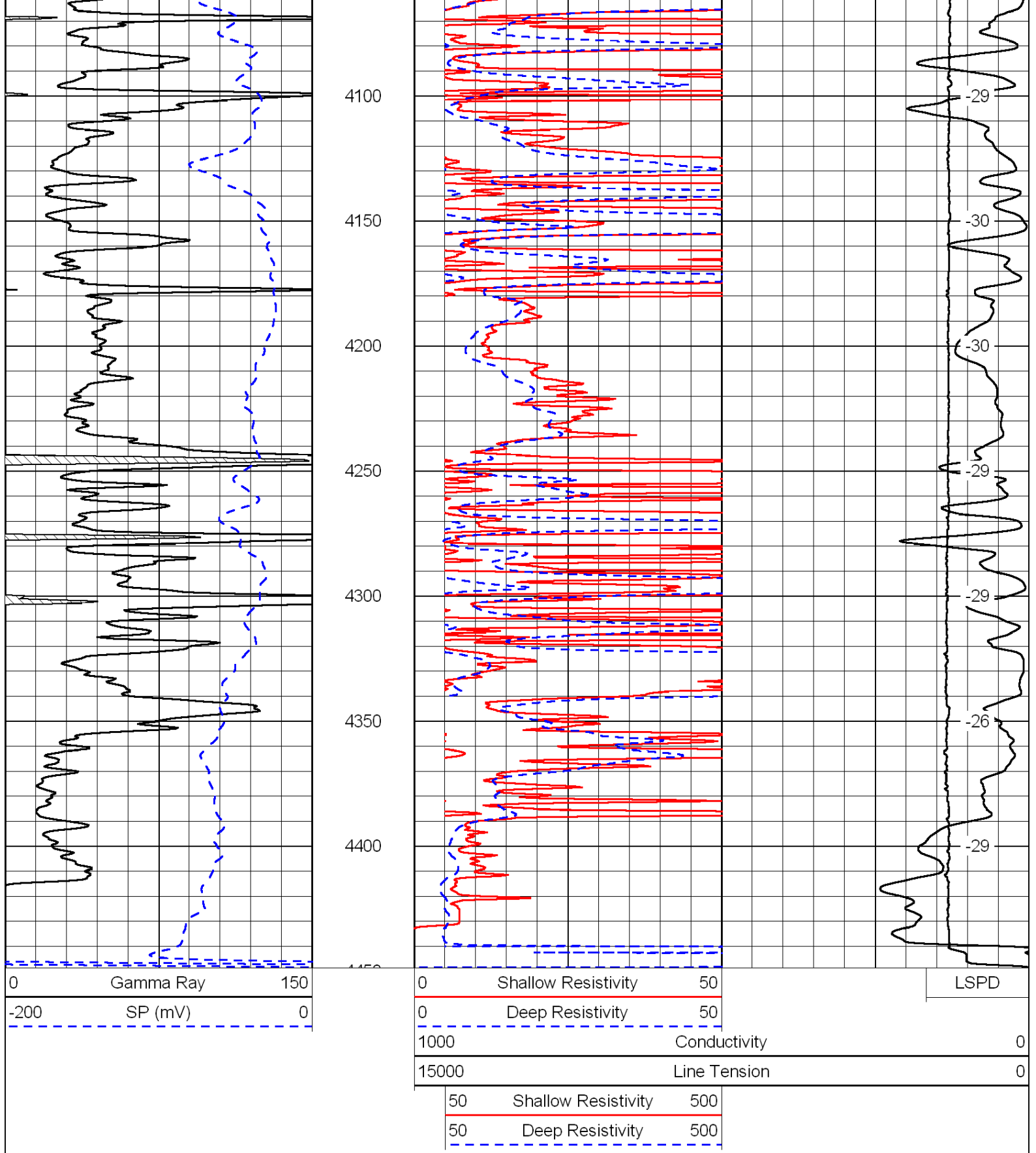












Database File: c:\warrior\data\damar_evel unit no. 1\damar.db
 Dataset Pathname: dil/damar2in
 Presentation Format: dil
 Dataset Creation: Sat Sep 25 18:14:41 2010
 Charted by: Depth in Feet scaled 1:240

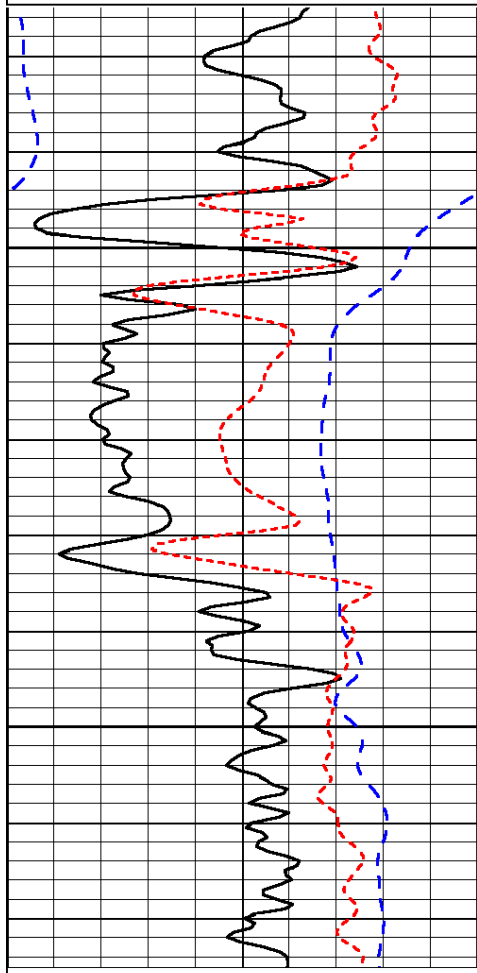


-160 Rxo / Rt 40

0.2 Shallow Resistivity 2000

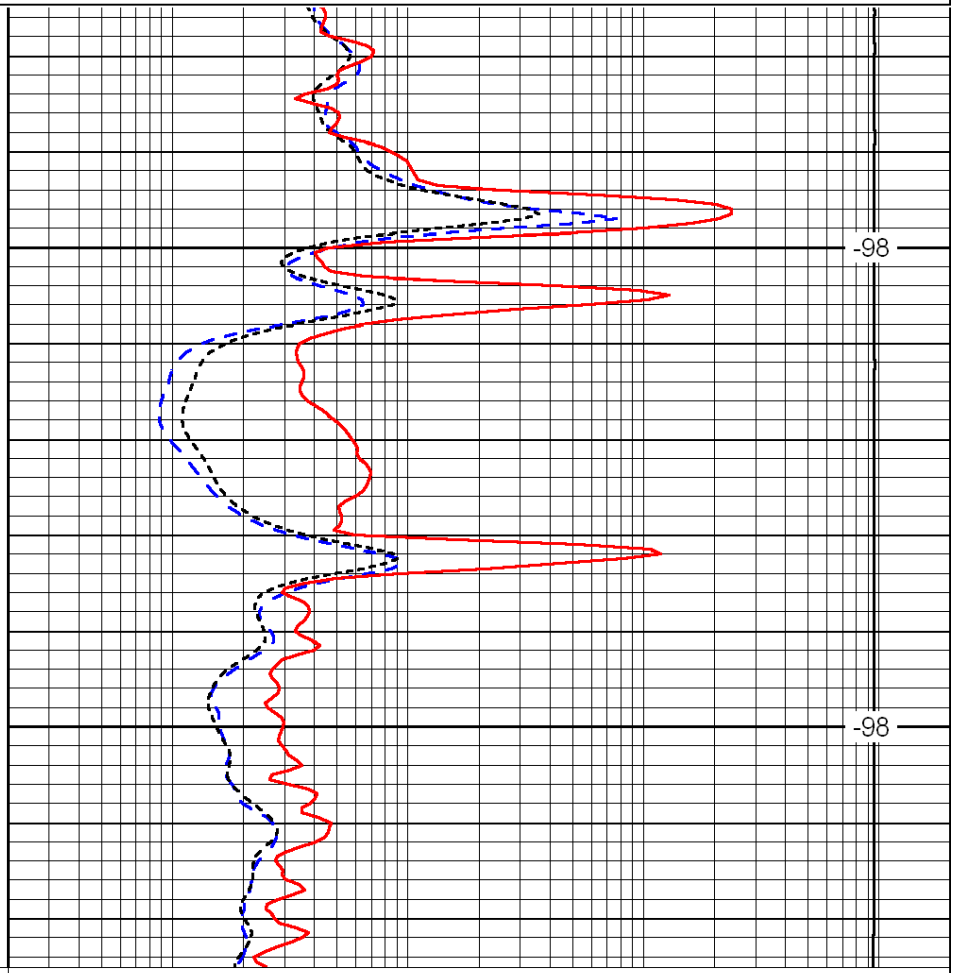
15000 Line Tension 0

LSPD



1500

1550



-98

-98

0 Gamma Ray 150

-200 SP (mV) 0

-160 Rxo / Rt 40

0.2 Deep Resistivity 2000

0.2 Medium Resistivity 2000

0.2 Shallow Resistivity 2000

15000 Line Tension 0

LSPD

Database File: c:\warrior\data\damar_evel unit no. 1\damar.db
 Dataset Pathname: dil/damar2in
 Presentation Format: dil
 Dataset Creation: Sat Sep 25 18:14:41 2010
 Charted by: Depth in Feet scaled 1:240

0 Gamma Ray 150

-200 SP (mV) 0

-160 Rxo / Rt 40

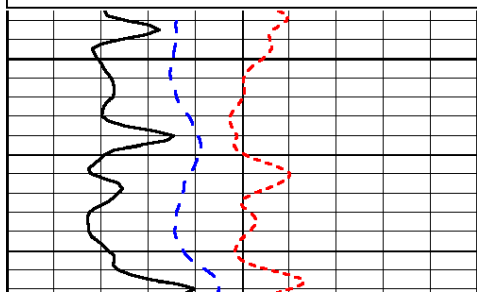
0.2 Deep Resistivity 2000

0.2 Medium Resistivity 2000

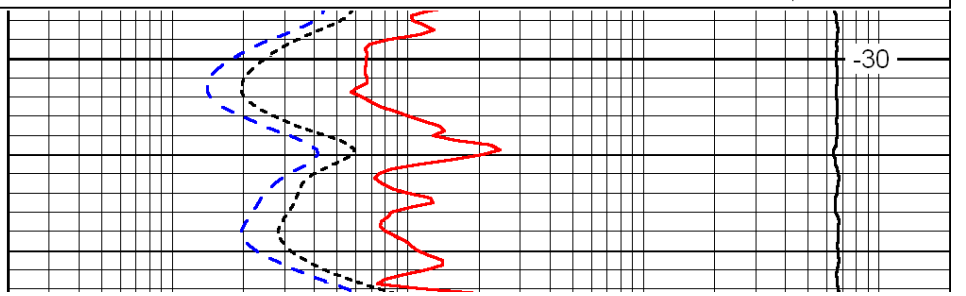
0.2 Shallow Resistivity 2000

15000 Line Tension 0

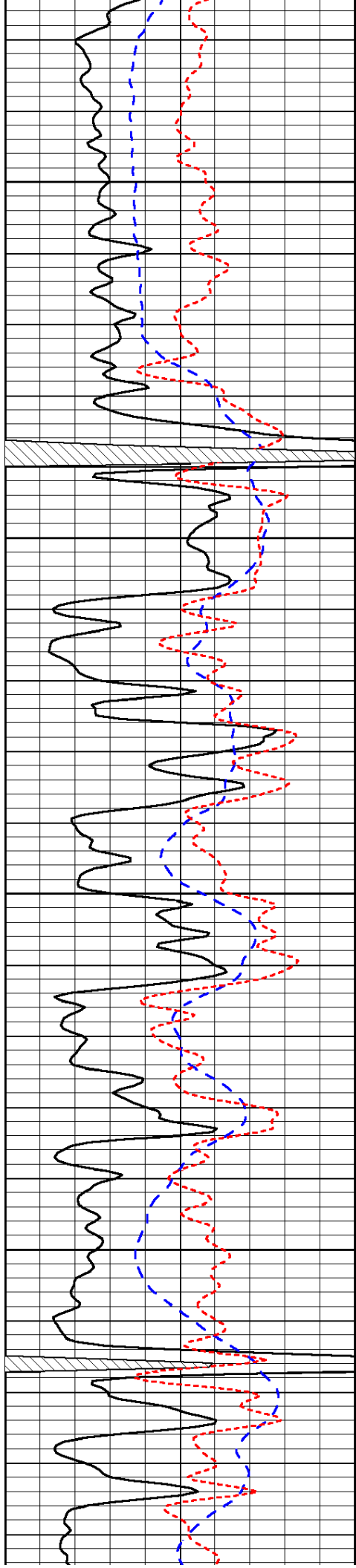
LSPD



3600



-30

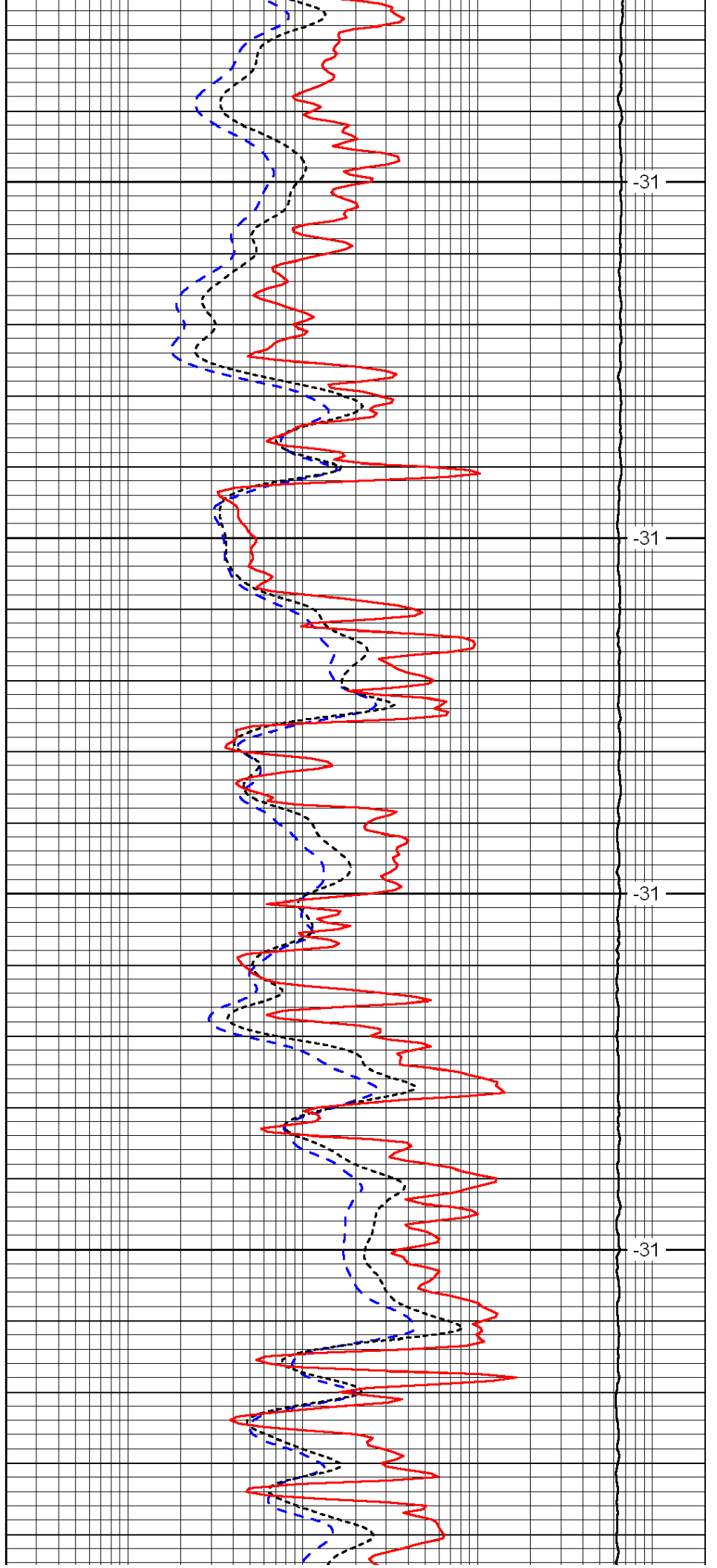


3650

3700

3750

3800

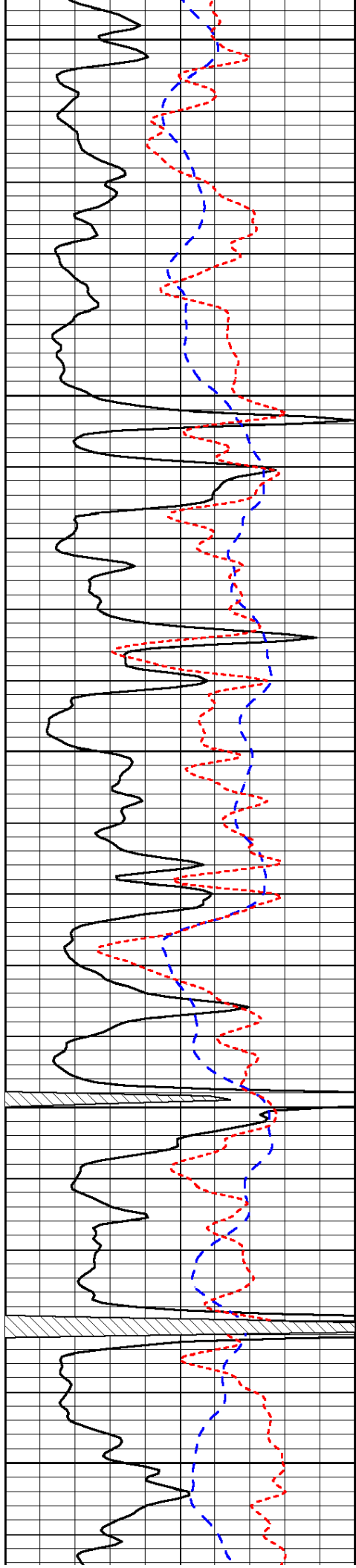


-31

-31

-31

-31



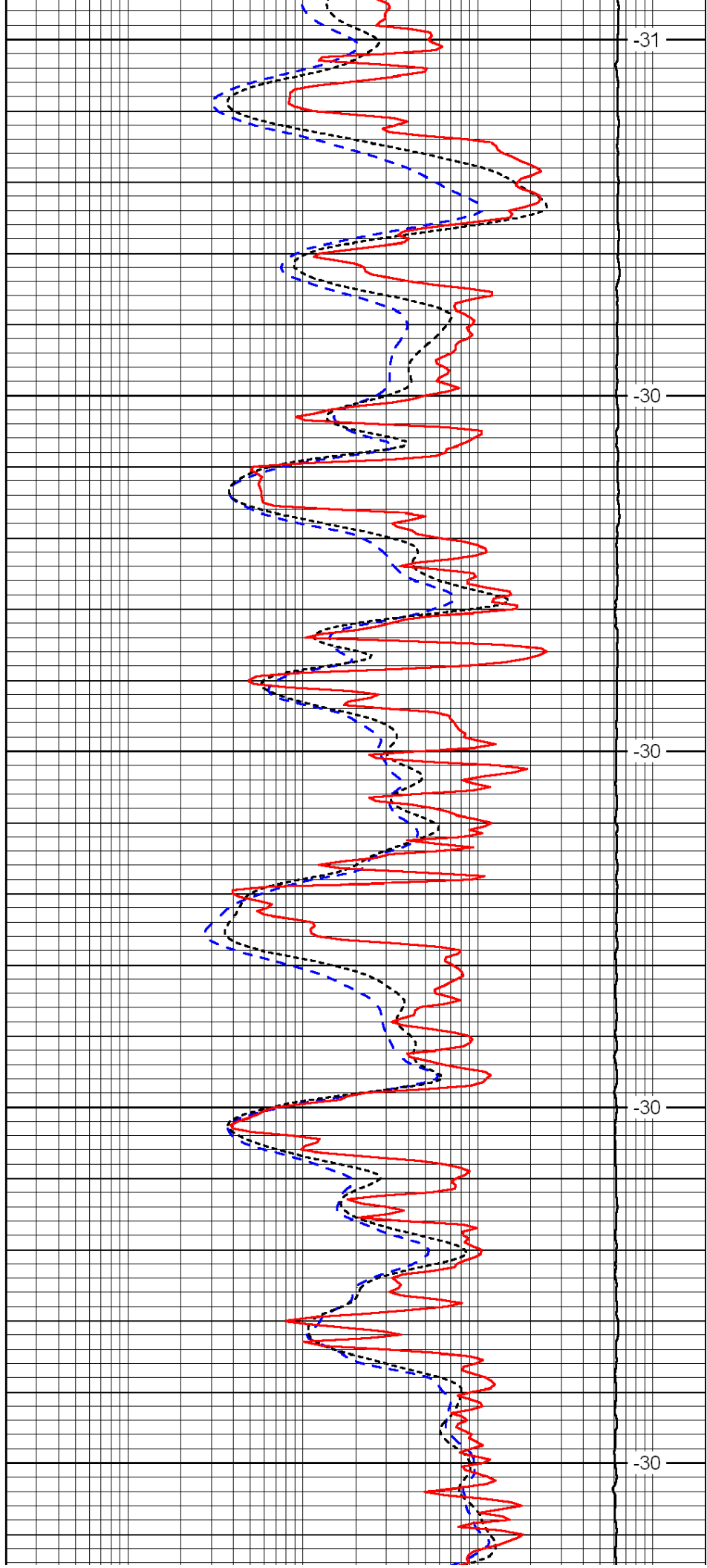
3850

3900

3950

4000

4050



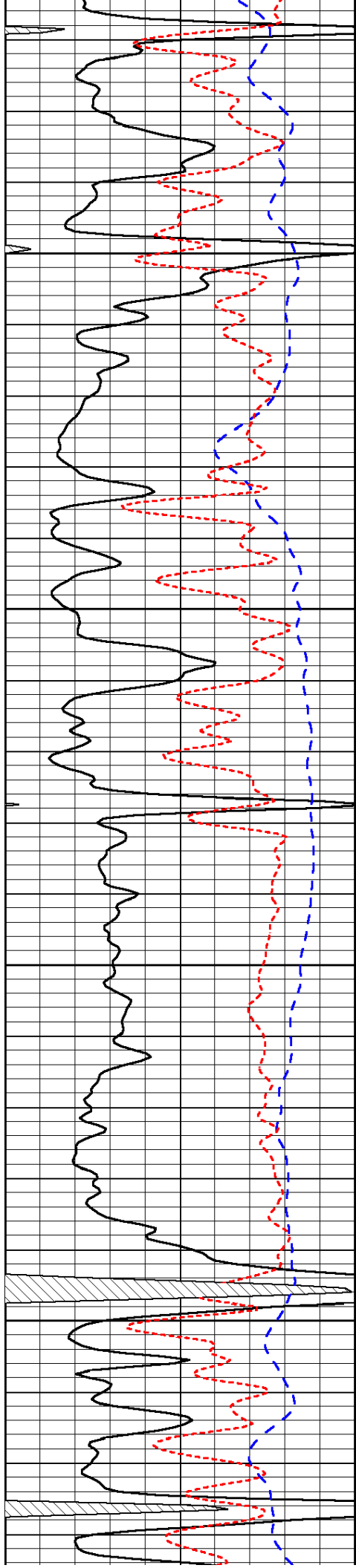
-31

-30

-30

-30

-30

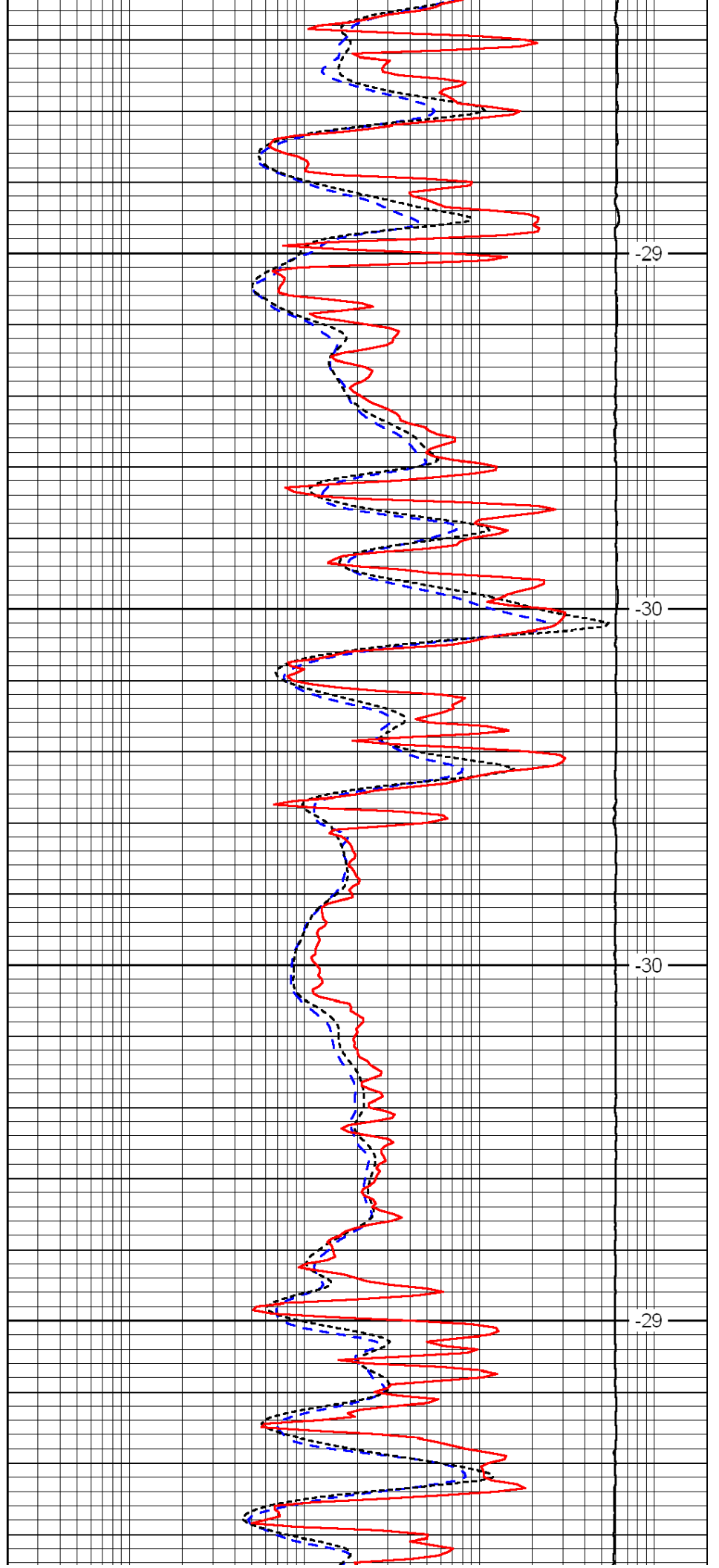


4100

4150

4200

4250

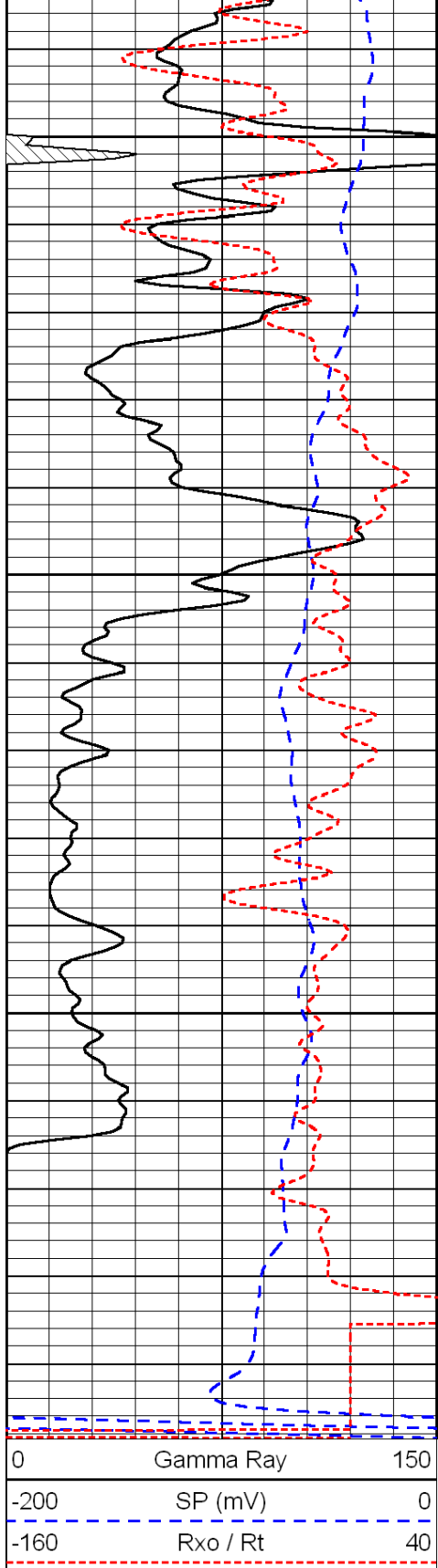


-29

-30

-30

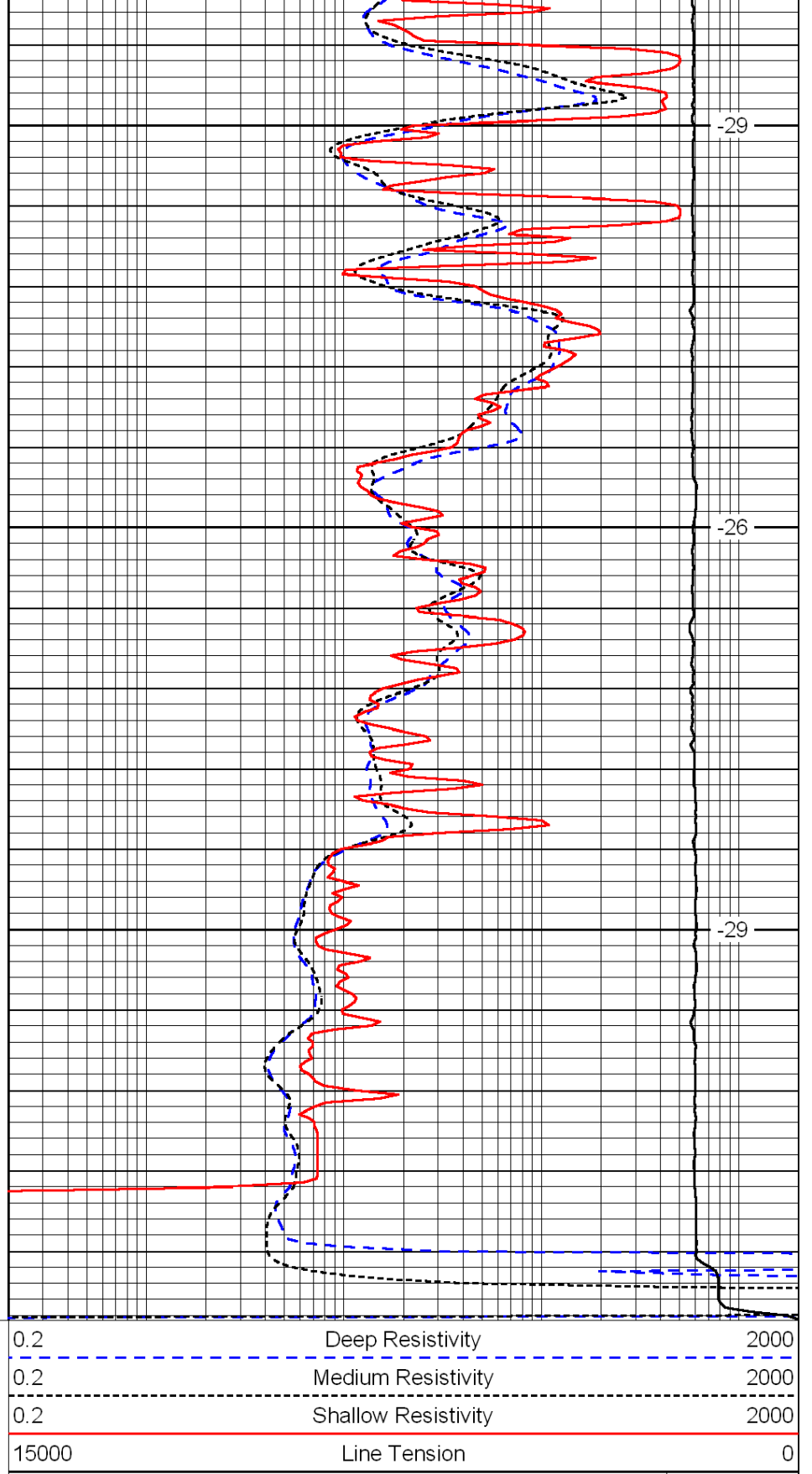
-29



4300

4350

4400



-29

-26

-29

LSPD