



Dual Compensated
Porosity Log

DIGITAL LOG (785) 625-3858

API No. 15-015-23,854-00-00

Company Range Oil Company, Inc.
Well Seglem No. 1
Field Reynolds-Schaffer
County Butler
Location 2240' FNL & 1050' FWL
State Kansas

Other Services
DIL

Permanent Datum Ground Level Elevation 1390
Log Measured From Kelly Bushing 10 Ft. Above Perm. Datum
Drilling Measured From Kelly Bushing

Sec: 16 Twp: 27S Rge: 6E
K.B. 1400
D.F. 1390
G.L. 1390

Date 04/29/2010

Run Number One
Type Log CNL / CDL
Depth Driller 3129
Depth Logger 3130
Bottom Logged Interval 3109
Top Logged Interval 1500
Type Fluid In Hole Chemical
Salinity, PPM CL 1,100
Density 9.4
Level Full
Max. Rec. Temp. F 109
Operating Rig Time 2 Hours
Equipment -- Location 17 Hays
Recorded By Mike Garrison
Witnessed By John Washburn

Borehole Record				Casing Record			
Run No.	Bit	From	To	Size	Wgt.	From	To
1	12.25	00	237	8.625	24#	00	237
2	7.875	237	3129				

<<< Fold Here >>>

All interpretations are opinions based on inferences from electrical or other measurements and we cannot and do not guarantee the accuracy or correctness of any interpretation, and we shall not, except in the case of gross or willful negligence on our part, be liable or responsible for any loss, costs, damages, or expenses incurred or sustained by anyone resulting from any interpretation made by any of our officers, agents or employees. These interpretations are also subject to our general terms and conditions set out in our current Price Schedule.

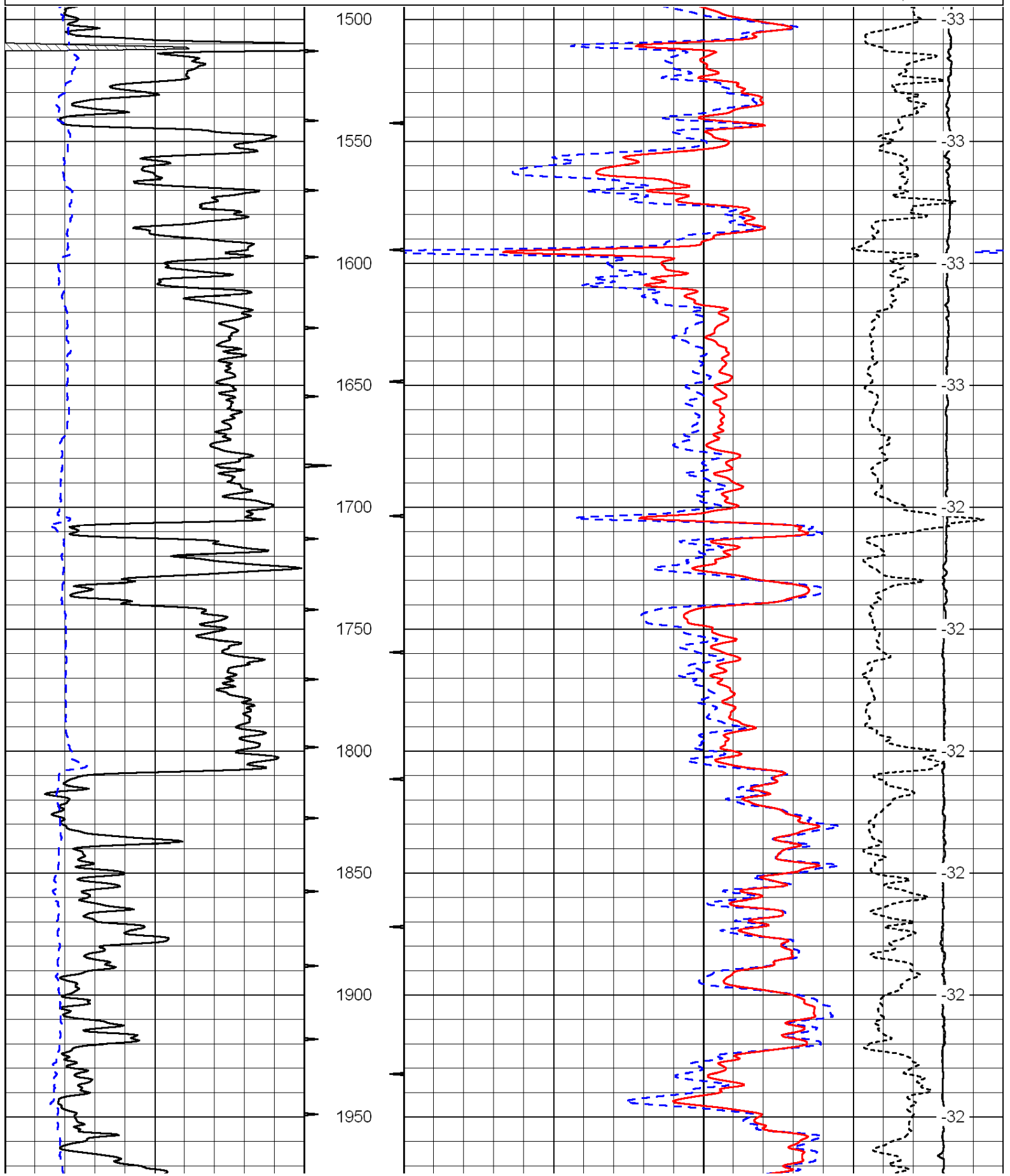
Comments

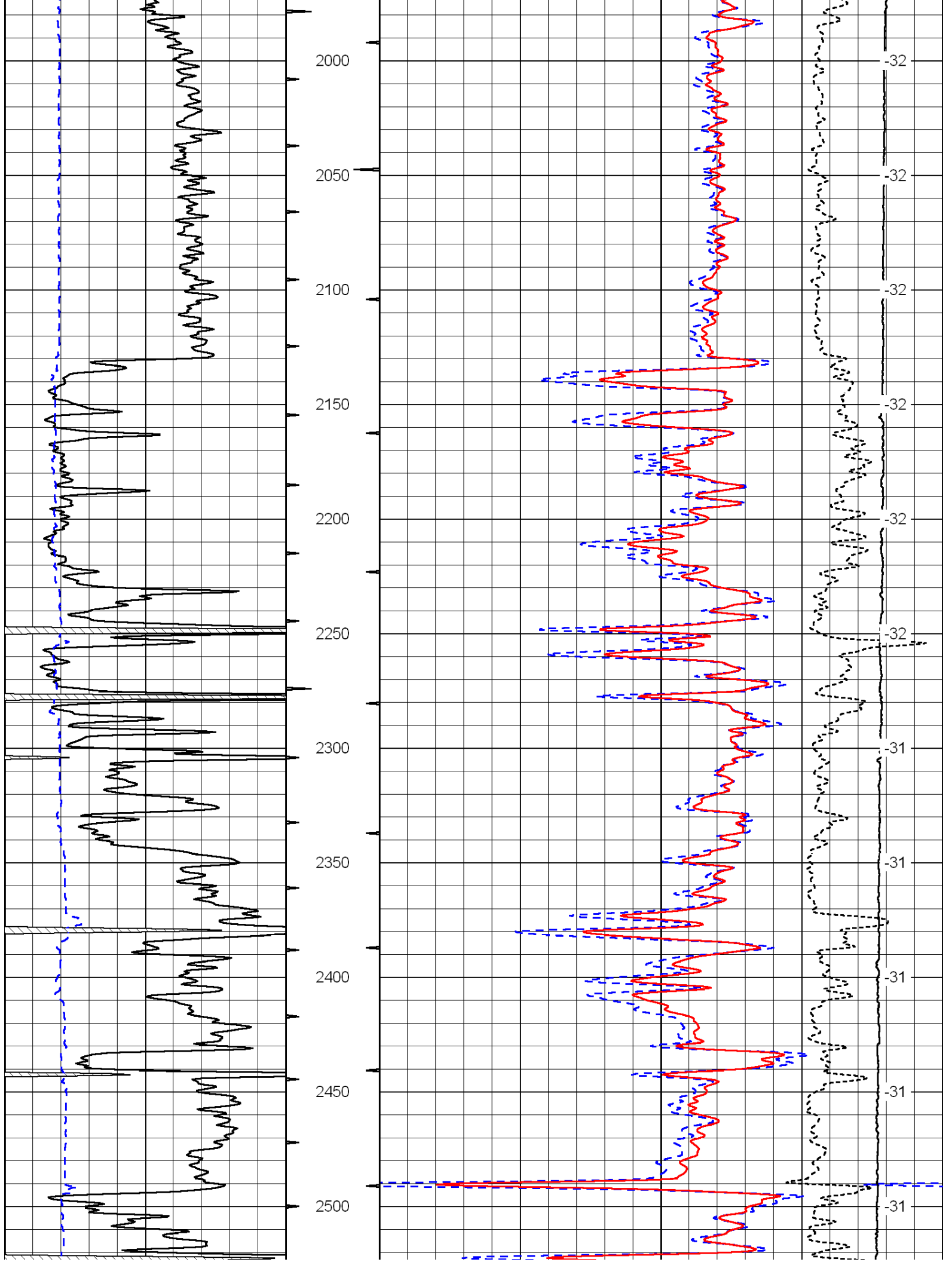
Thank you for using Log-Tech, Inc.
(785) 625-3858

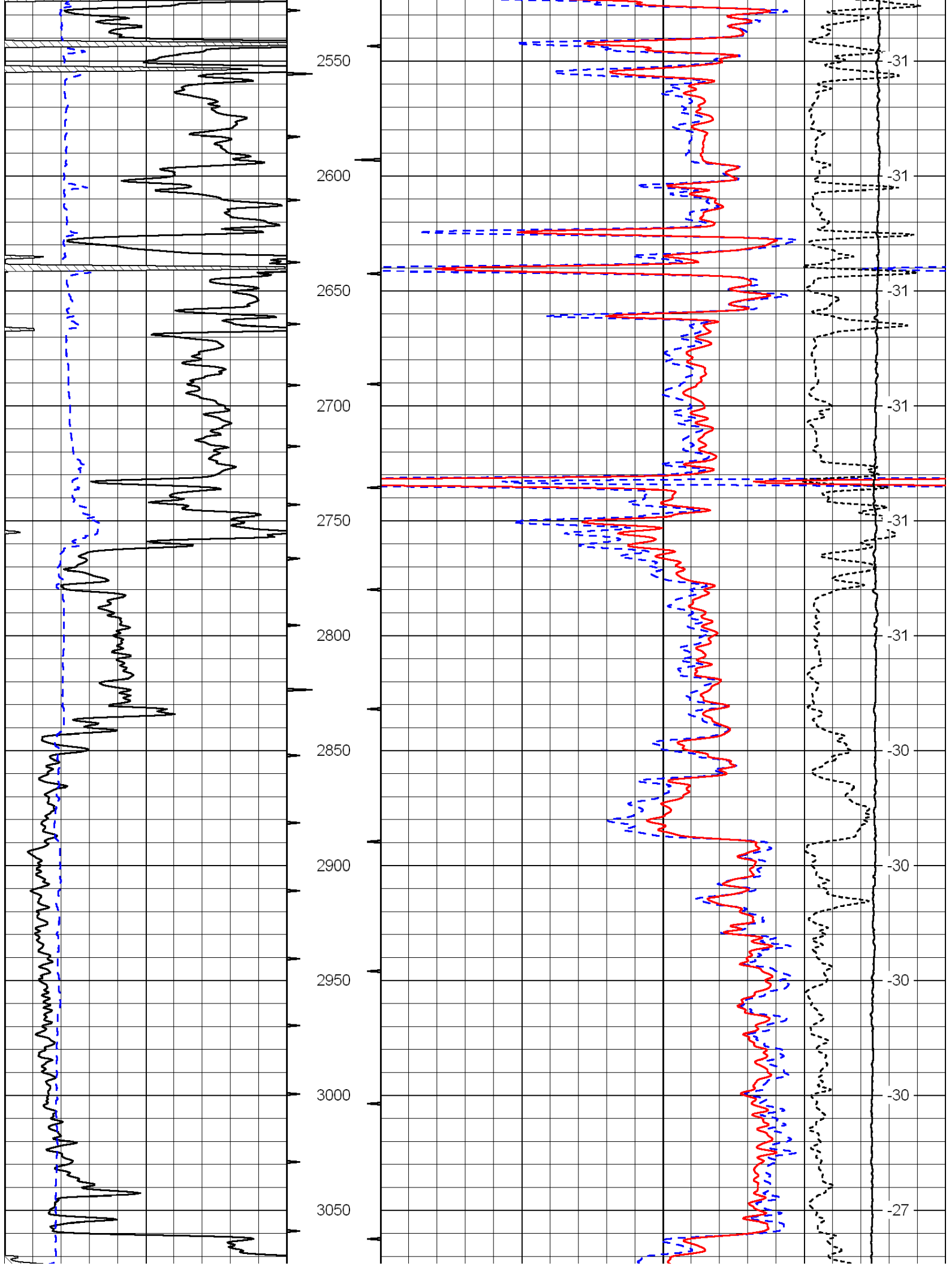
Leon, 1/2 North, East Into

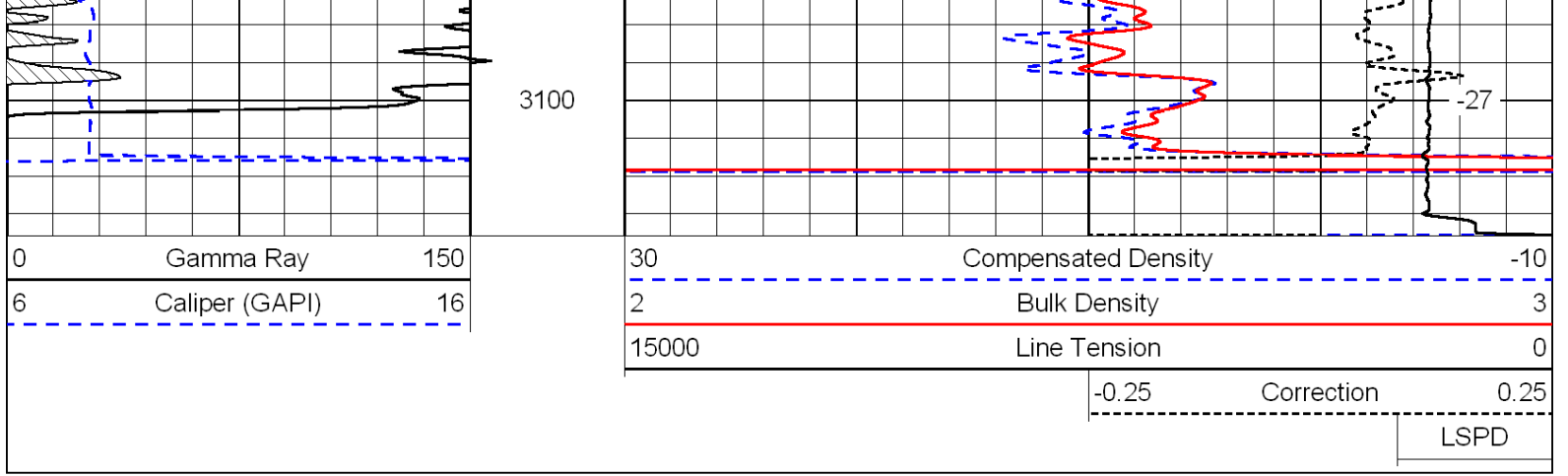
0	Gamma Ray	150
6	Caliper (GAPI)	16

30	Compensated Density	-10
2	Bulk Density	3
15000	Line Tension	0
-0.25	Correction	0.25
LSPD		









Database File: c:\warrior\backup of data\range_seglem no. 1\rangehd.db
 Dataset Pathname: dil/rangestck
 Presentation Format: cndlspec
 Dataset Creation: Thu Apr 29 10:06:57 2010
 Charted by: Depth in Feet scaled 1:240

