



**SUPERIOR
Hays,
Kansas**

**MICRO
LOG**

Company PIONEER EXPLORATION, LLC.
Well DIRKS #4
Field SHARON NORTH
County HARPER
State KANSAS

Company PIONEER EXPLORATION, LLC.
Well DIRKS #4
Field SHARON NORTH
County HARPER State KANSAS

Location: API #: 15-077-21670
990' FSL & 580' FEL
SEC 29 TWP 31S RGE 9W
Permanent Datum GROUND LEVEL Elevation 1624
Log Measured From KELLY BUSHING 7' A.G.L.
Drilling Measured From KELLY BUSHING
Other Services
CDL/CNL
DIL
Elevation
K.B. 1631
D.F.
G.L. 1624

Date	3-27-10
Run Number	TWO
Depth Driller	4605
Depth Logger	4603
Bottom Logged Interval	4601
Top Log Interval	2400
Casing Driller	265
Casing Logger	NA
Bit Size	7.875
Type Fluid in Hole	CHEMICAL MUD
Density / Viscosity	9.2 / 50
pH / Fluid Loss	10.0 / 8.8
Source of Sample	FLOWLINE
Rim @ Meas. Temp	0.75 @ 77F
Rinf @ Meas. Temp	0.56 @ 77F
Rmc @ Meas. Temp	0.90 @ 77F
Source of Rmf / Rmc	MEASURED
Rm @ BHT	.480 @ 121F
Time Circulation Stopped	3 HOURS
Time Logger on Bottom	9:30 P.M.
Maximum Recorded Temperature	121F
Equipment Number	860
Location	HAYS, KS.
Recorded By	RUPP
Witnessed By	SEAN DEENIHAN

<<< Fold Here >>>

All interpretations are opinions based on inferences from electrical or other measurements and we cannot and do not guarantee the accuracy or correctness of any interpretation, and we shall not, except in the case of gross or willful negligence on our part, be liable or responsible for any loss, costs, damages, or expenses incurred or sustained by anyone resulting from any interpretation made by any of our officers, agents or employees. These interpretations are also subject to our general terms and conditions set out in our current Price Schedule.

Comments

SUPERIOR WELL SERVICES
785-628-6395
THANK YOU FOR YOUR BUSINESS
DIRECTIONS: SHARON, E TO RD. #150, 4N, W INTO.

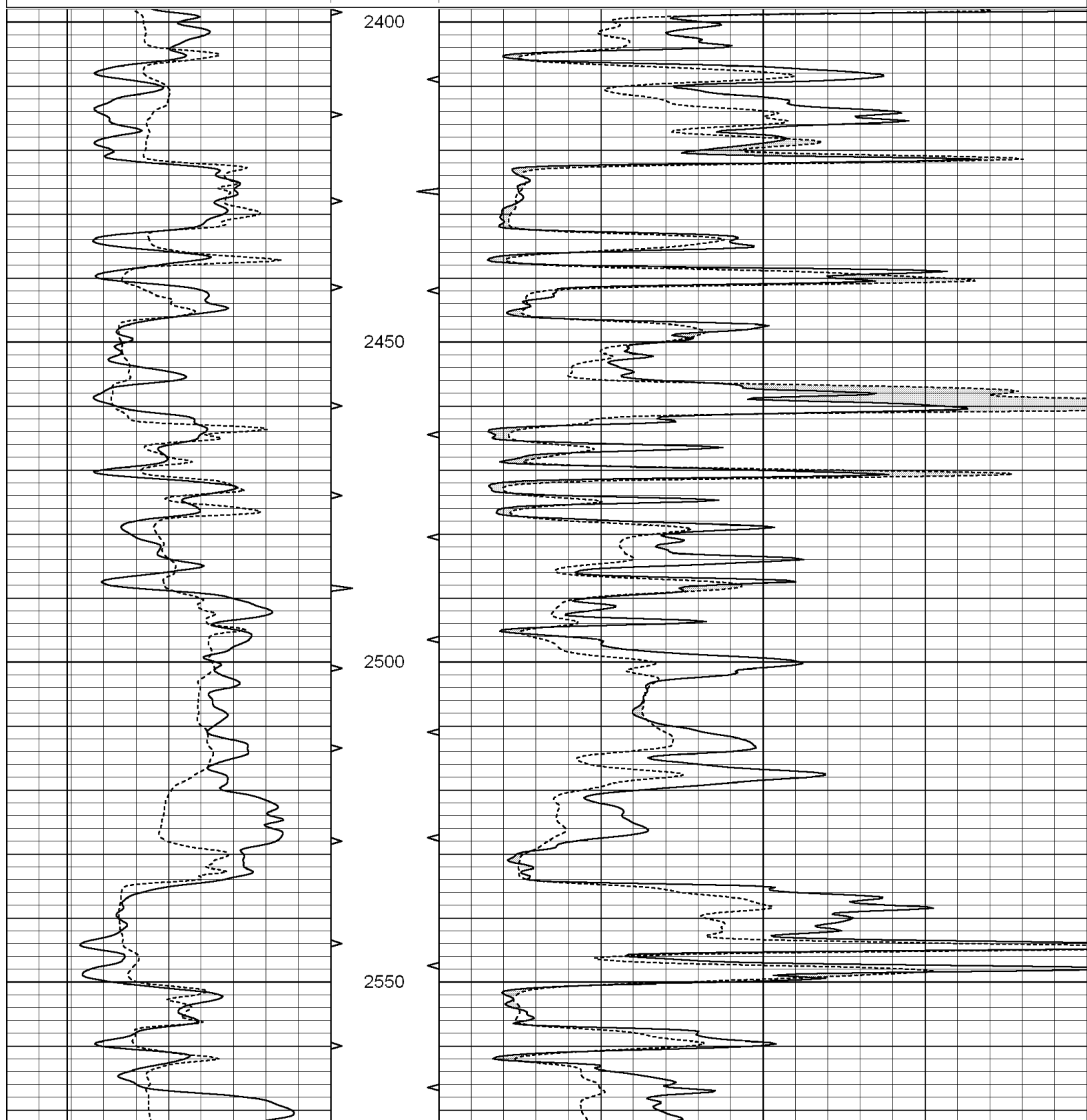


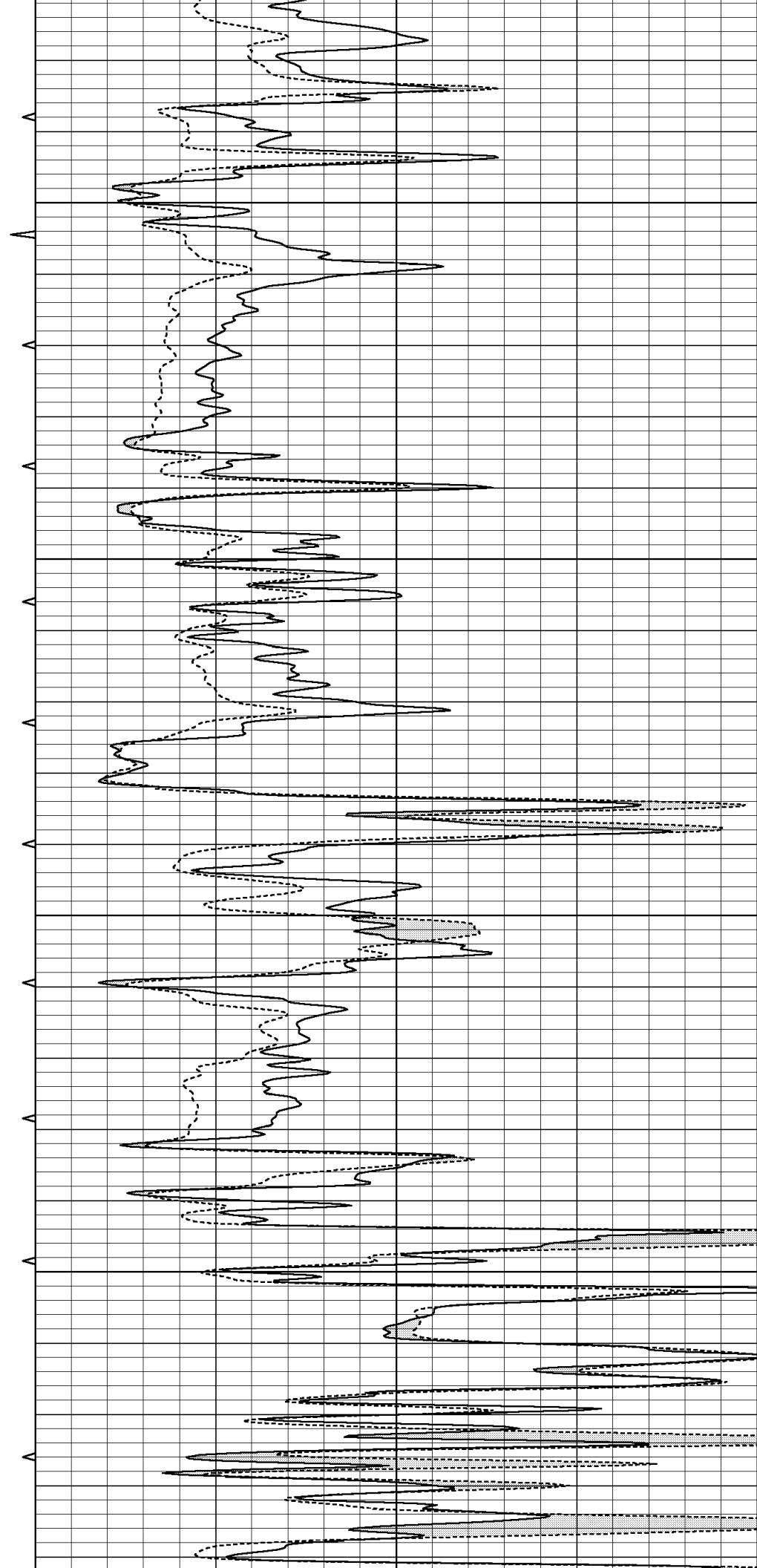
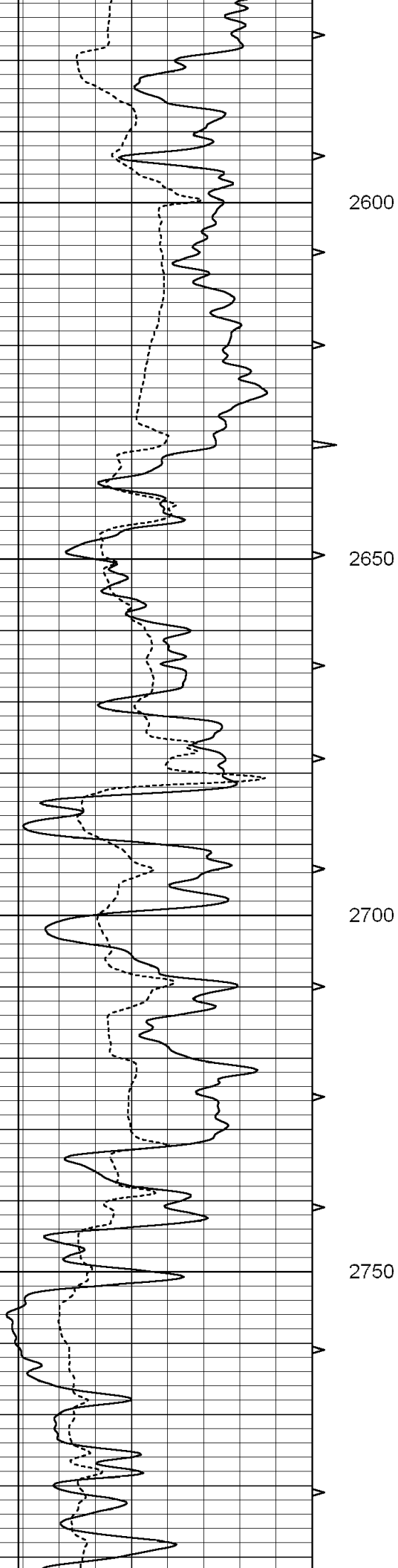
SUPERIOR
Hays,
Kansas

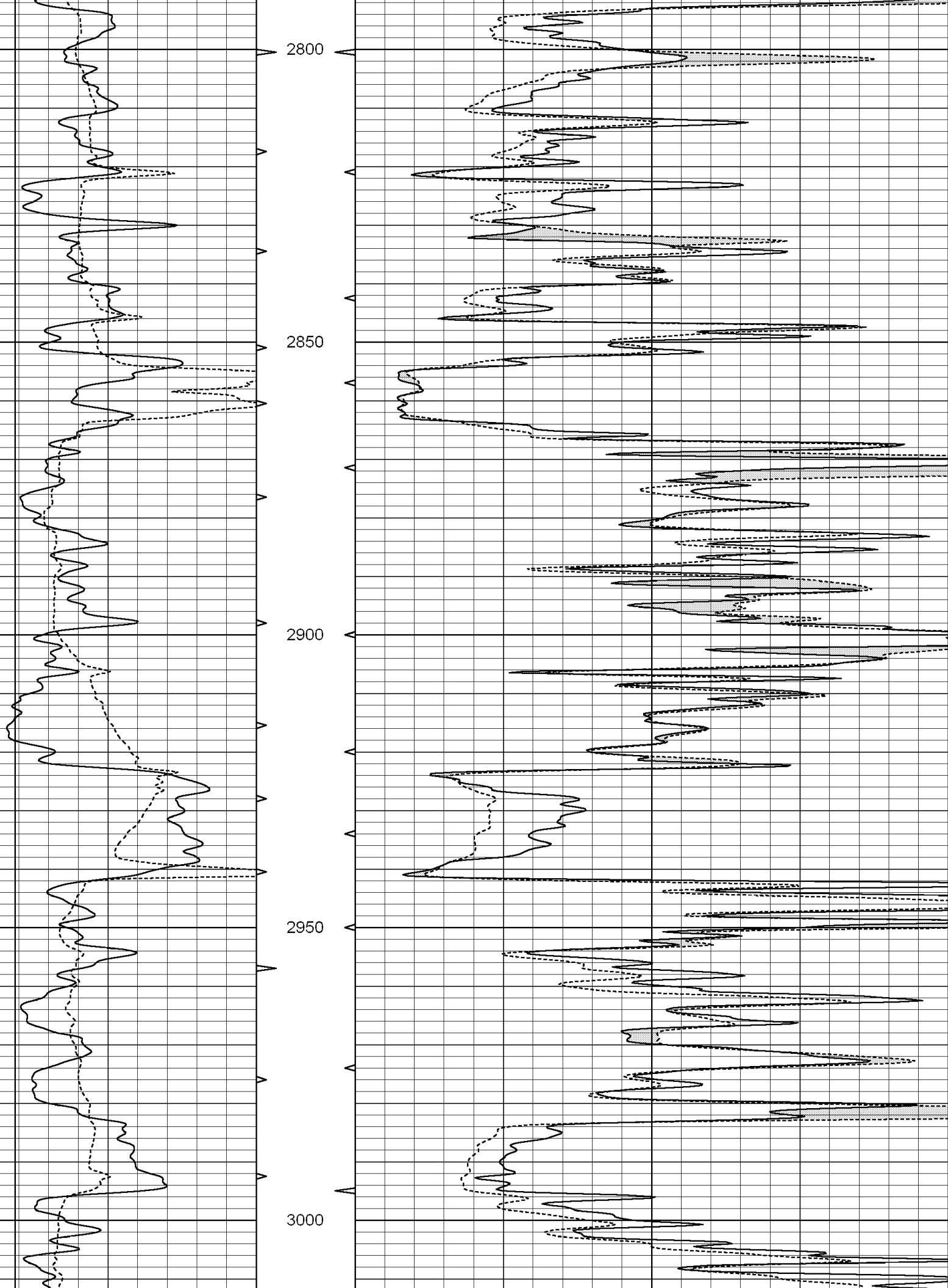
MAIN SECTION

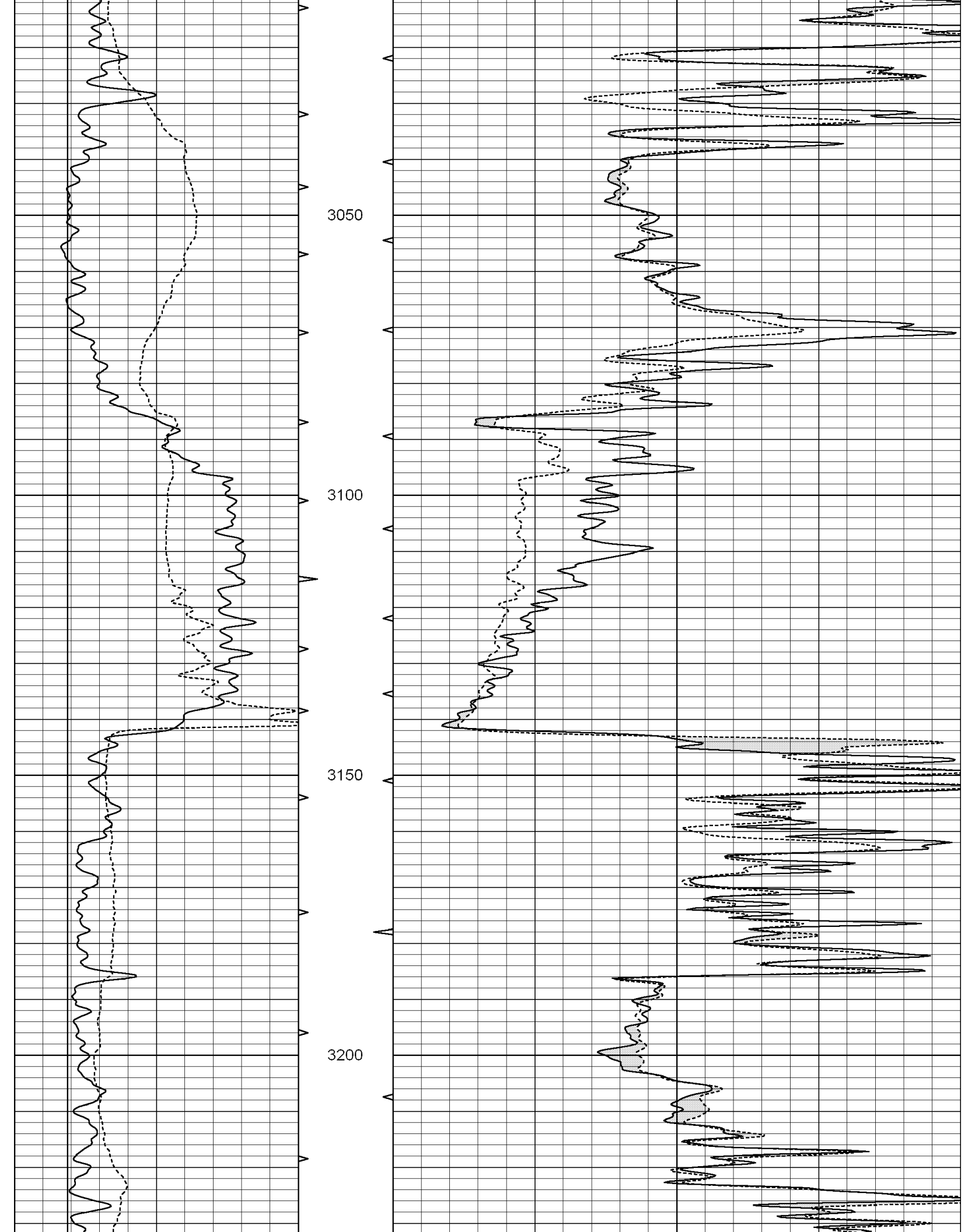
Database File: 004621ddn.db
 Dataset Pathname: pass5.A
 Presentation Format: micro
 Dataset Creation: Sat Mar 27 13:50:43 2010
 Charted by: Depth in Feet scaled 1:240

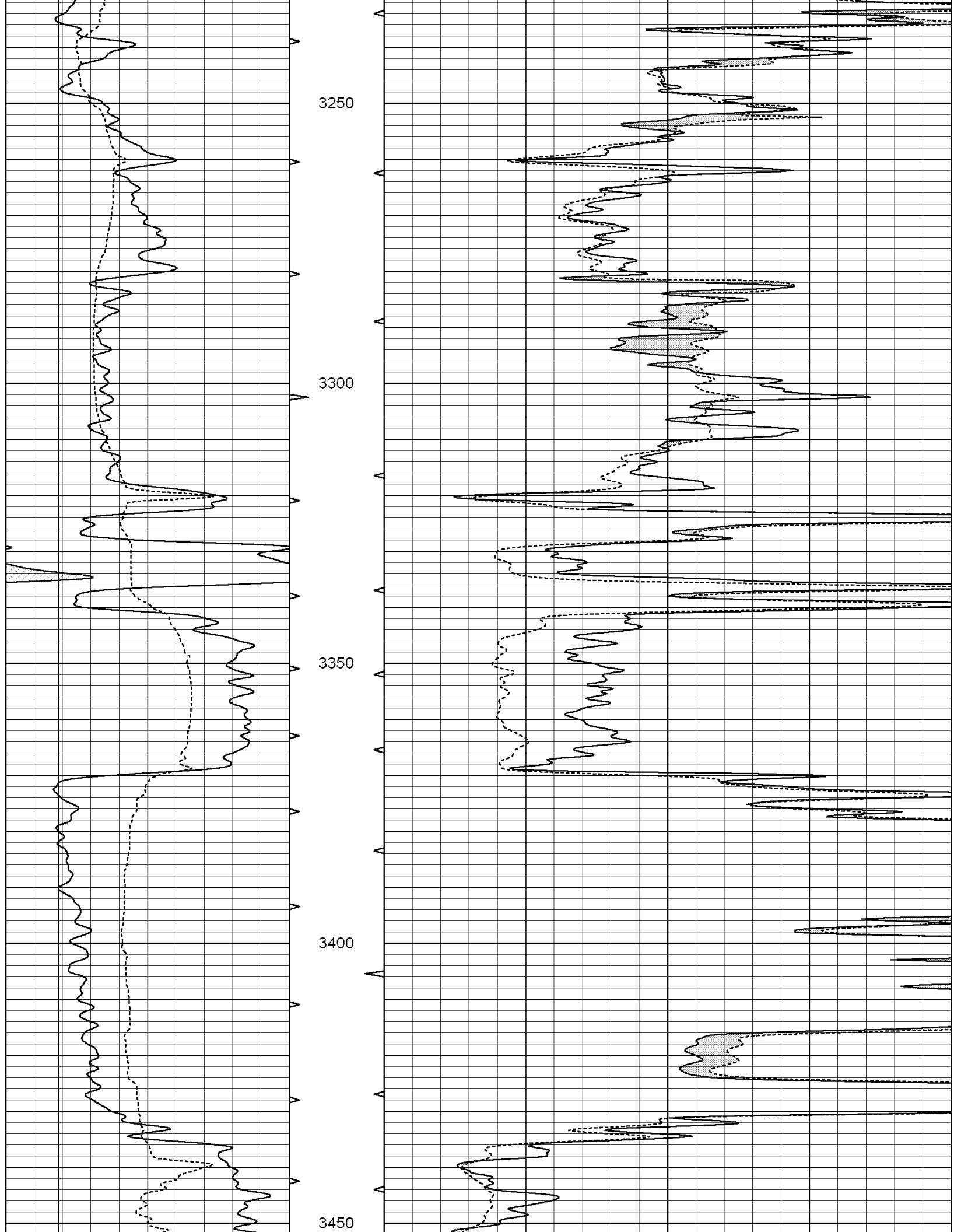
0	GAMMA RAY (GAPI)	150	ABHV	0	MEL1.5 (Ohm-m)	20
6	CALIPER (in)	16	10 (ft3)	0	MEL2.0 (Ohm-m)	20
			TBHV			
			0 (ft3)	10		

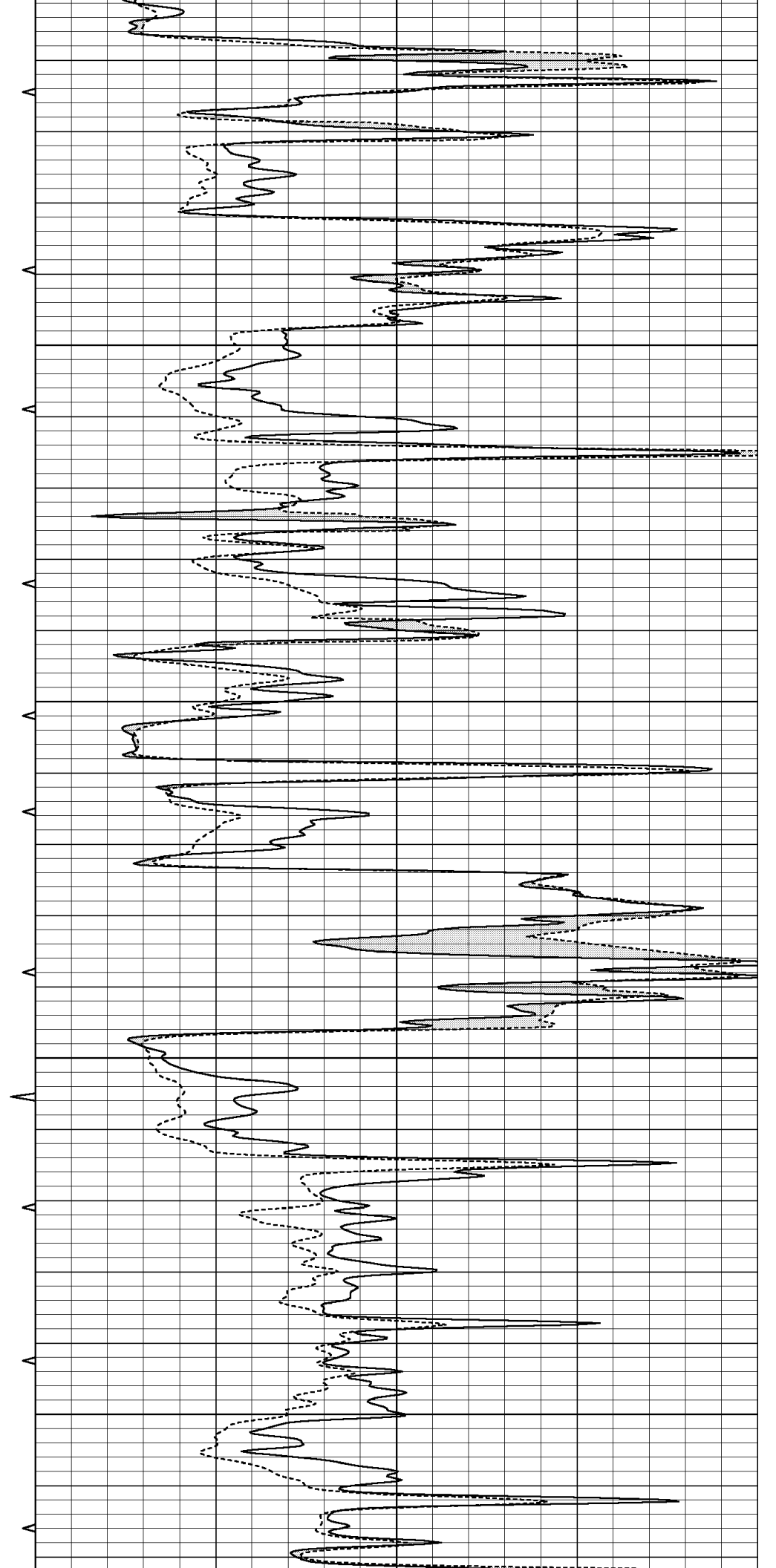
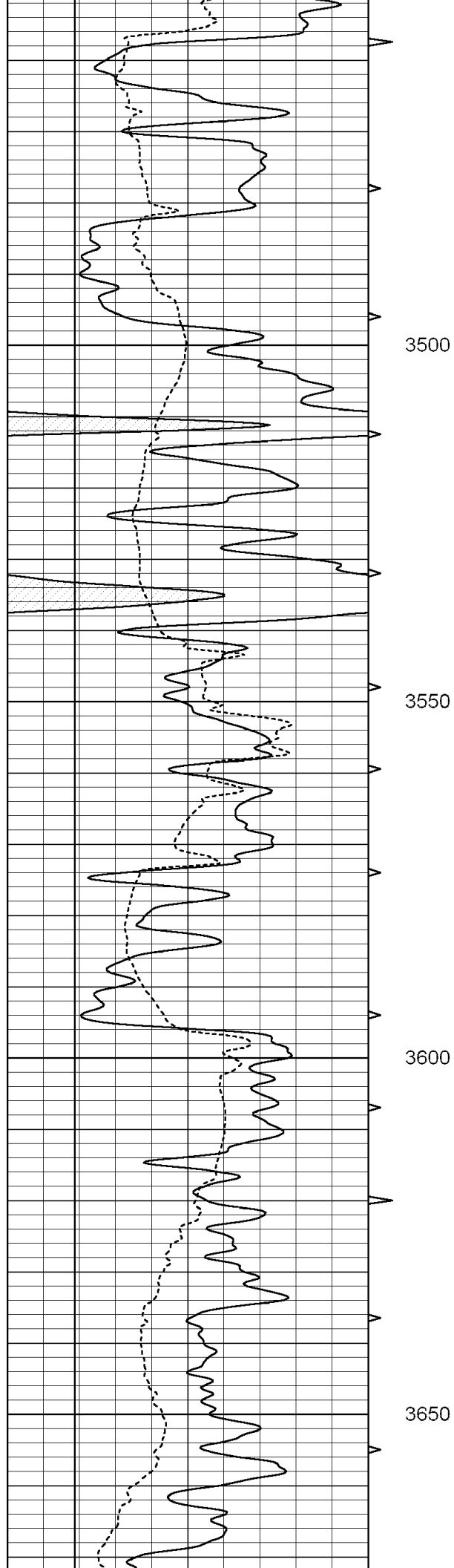


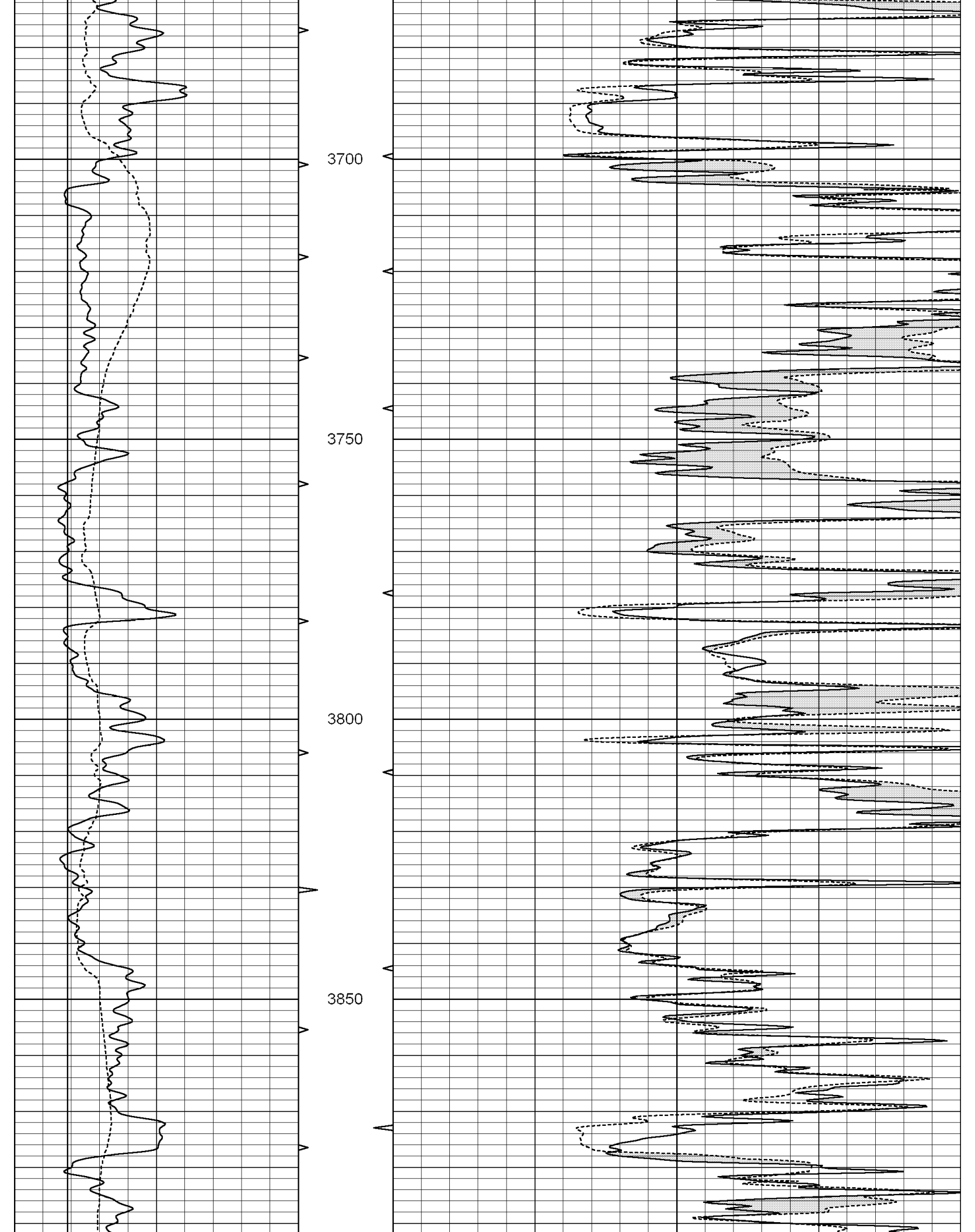


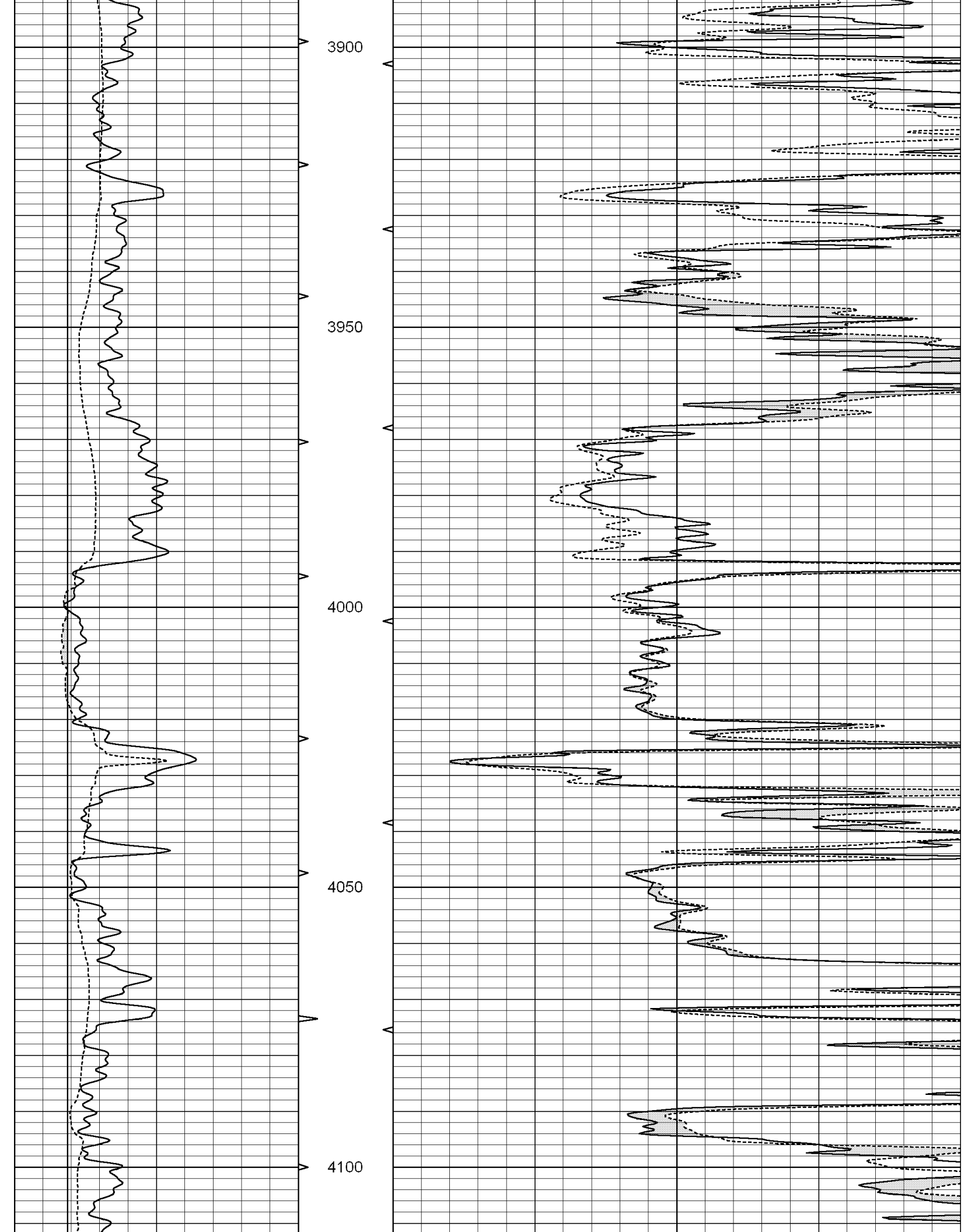


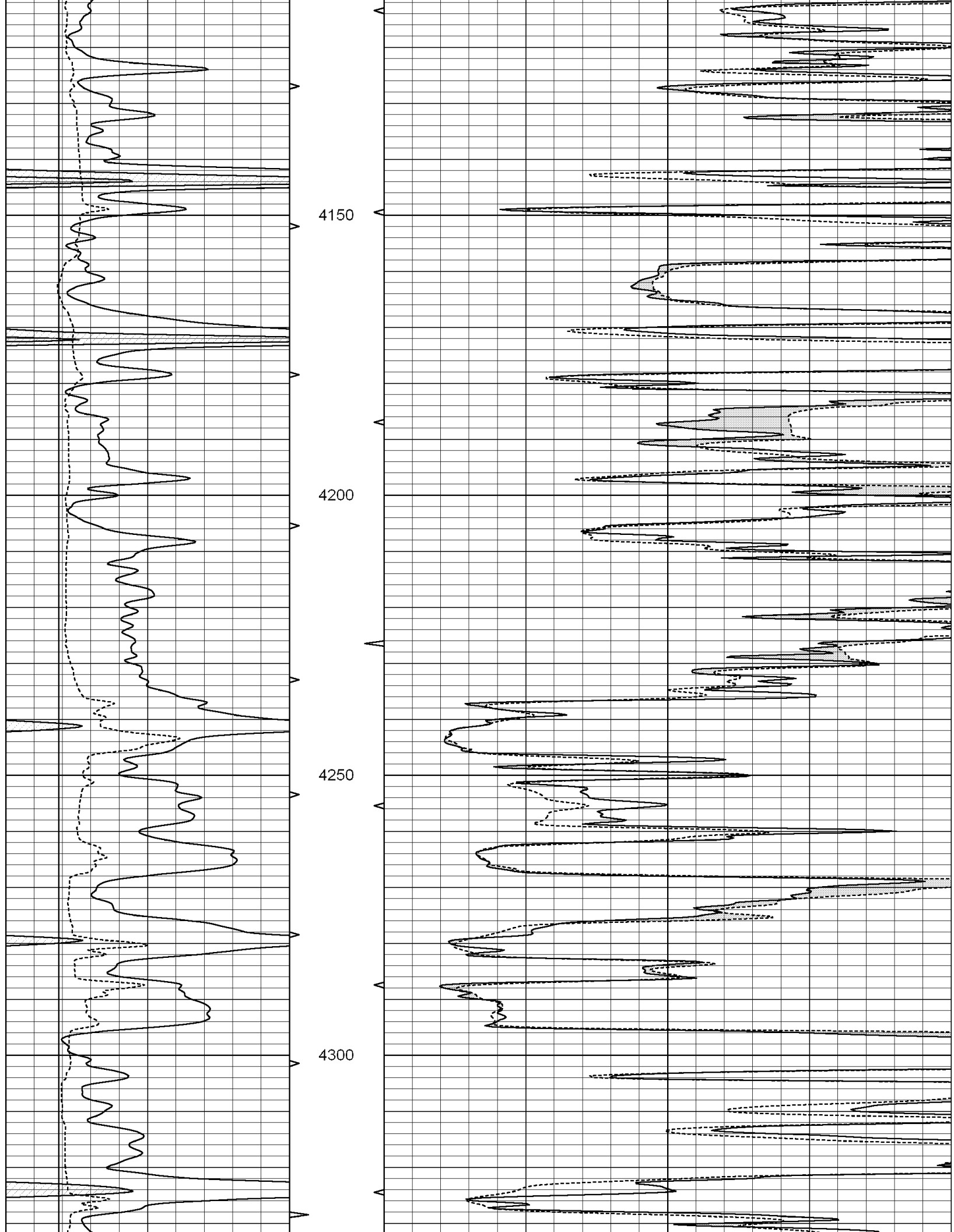


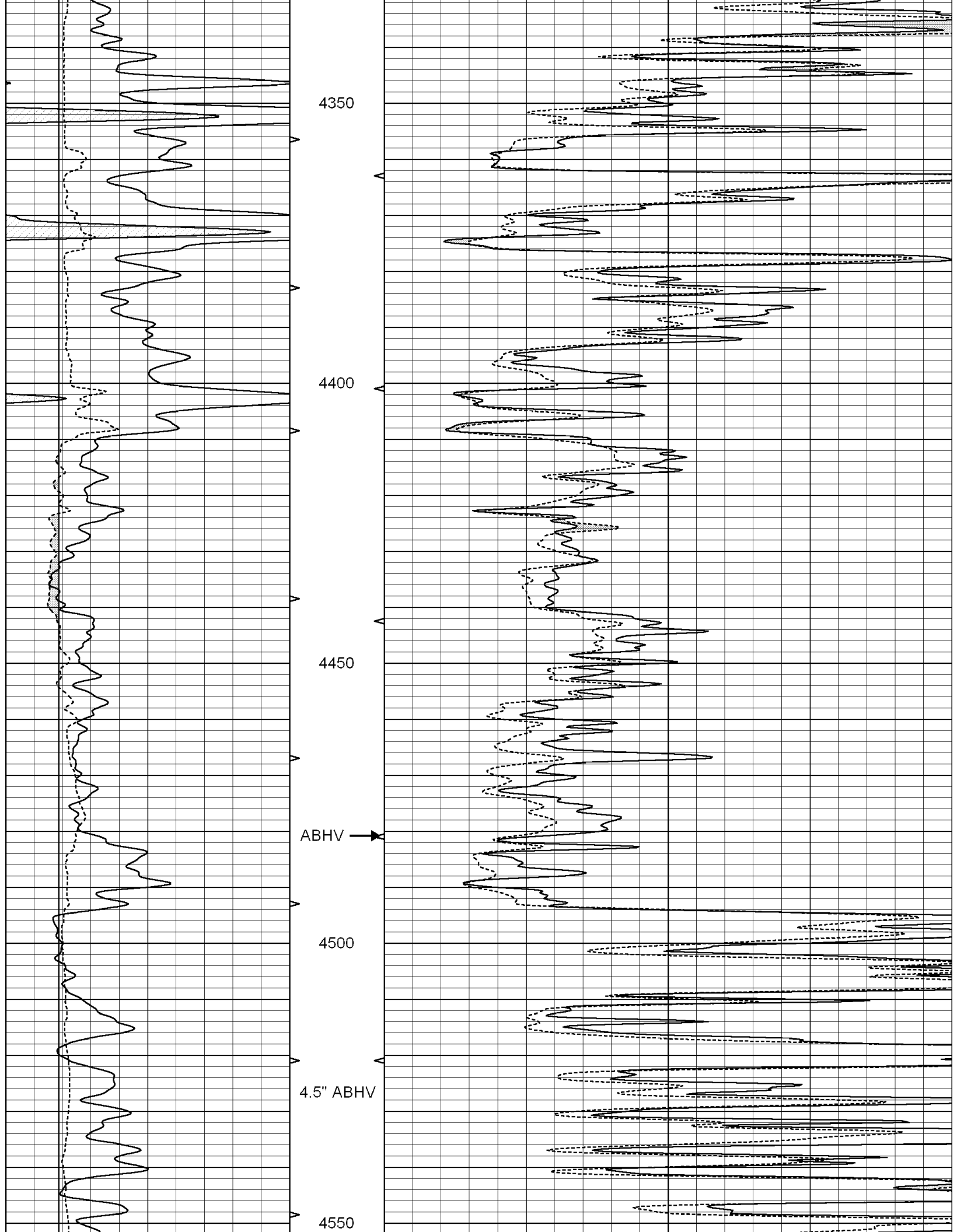


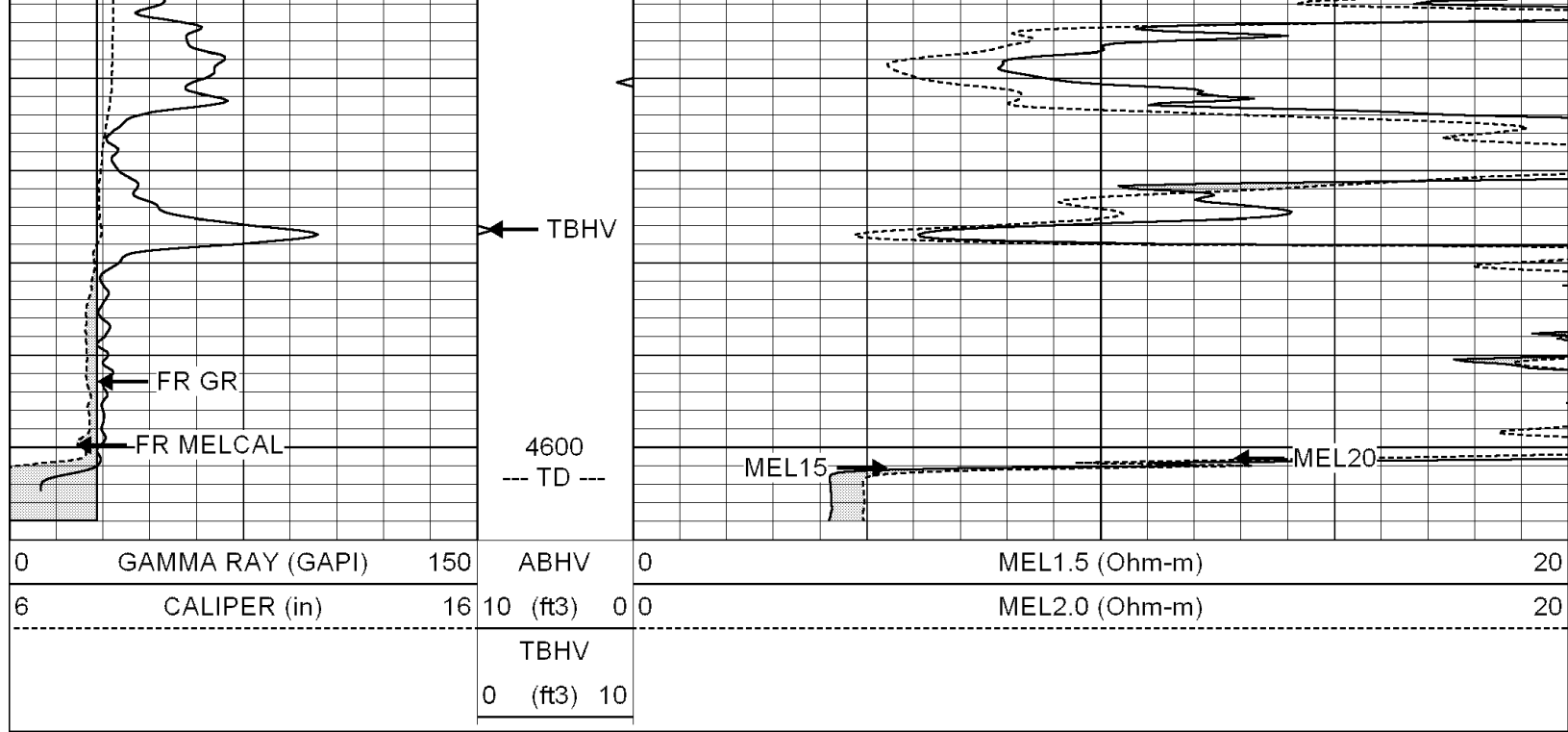










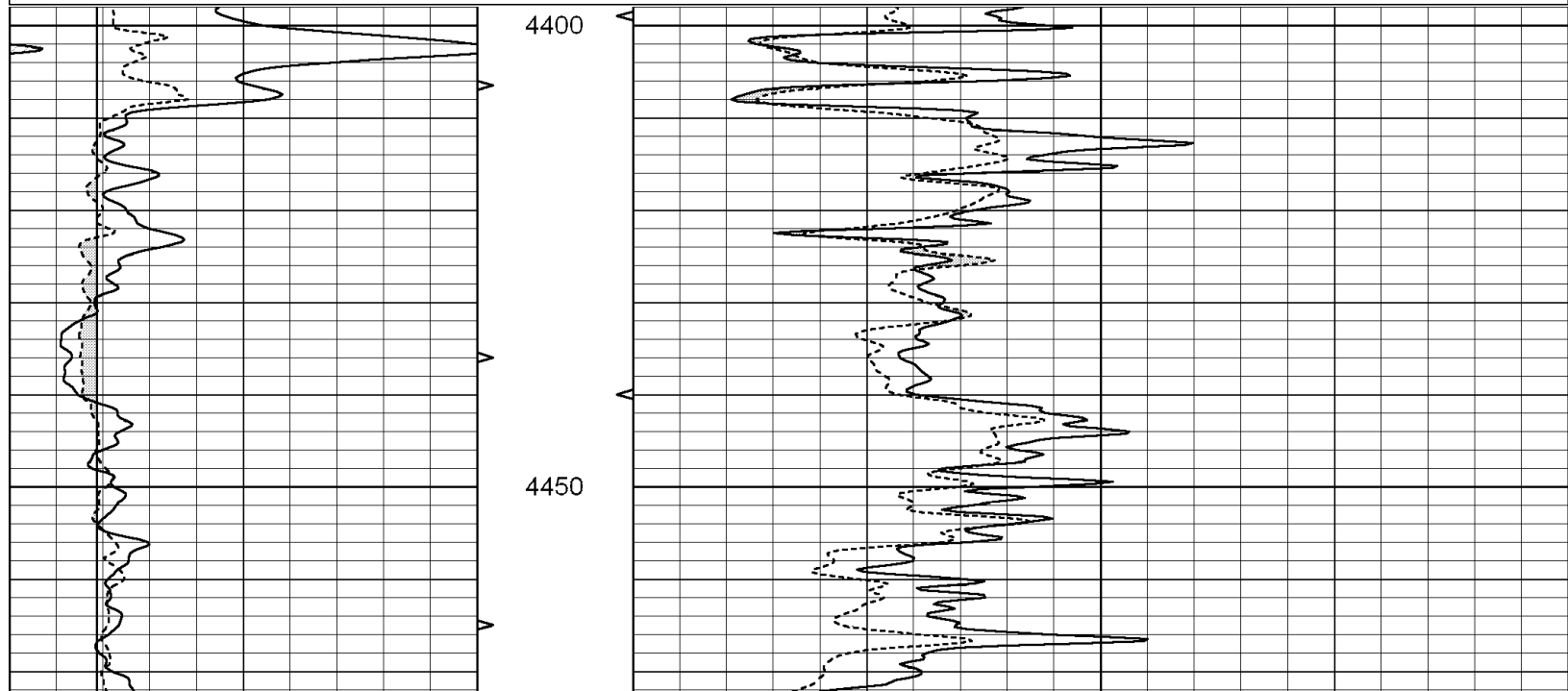


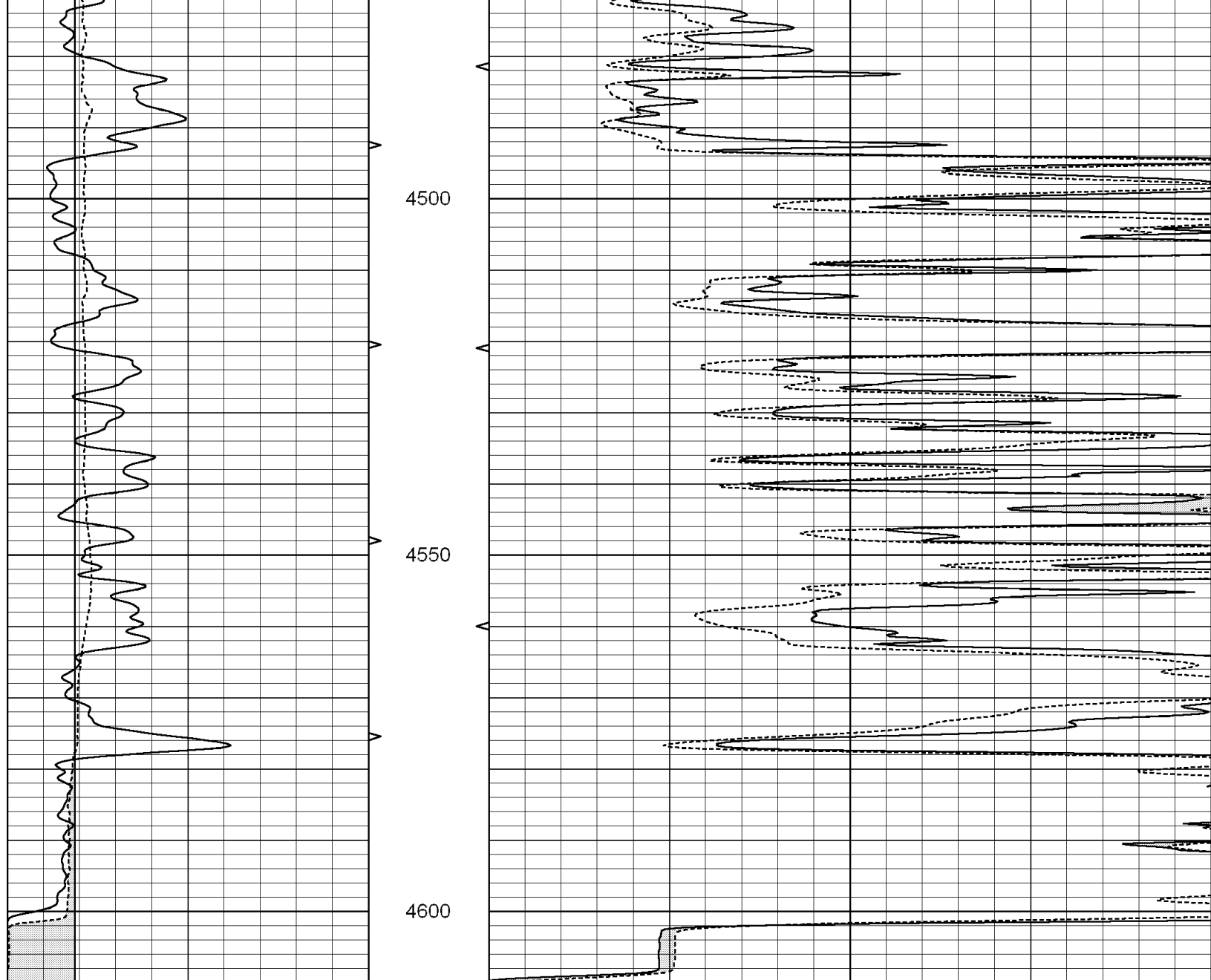
SUPERIOR
Hays,
Kansas

REPEAT SECTION

Database File: 004621ddn.db
 Dataset Pathname: pass4.A
 Presentation Format: micro
 Dataset Creation: Sat Mar 27 13:11:10 2010 by Calc Open-Cased 090629
 Charted by: Depth in Feet scaled 1:240

0	GAMMA RAY (GAPI)	150	ABHV	0	MEL1.5 (Ohm-m)	20
6	CALIPER (in)	16	10 (ft3)	0 0	MEL2.0 (Ohm-m)	20
			TBHV			
			0 (ft3)	10		





0	GAMMA RAY (GAPI)	150	ABHV	0	MEL1.5 (Ohm-m)	20
6	CALIPER (in)	16	10 (ft3) 0 0	0	MEL2.0 (Ohm-m)	20
			TBHV			
			0 (ft3) 10			

Calibration Report

Database File: 004621ddn.db
 Dataset Pathname: pass5.A
 Dataset Creation: Sat Mar 27 13:50:43 2010

MICRO Calibration Report

Serial Number: Micro1
 Tool Model: ProbeL
 Performed: Sat Mar 27 11:59:45 2010

Caliper Calibration: Gain=3.676 Offset=-2.634

References	Low Cal	High Cal
Readings	7.300	14.000
	2.702	4.525

1.5" Calibration: Gain=65.000 Offset=-0.200

References	Low Cal	High Cal
Readings	0.000	20.000
	0.007	0.653

2" Calibration: Gain=41.000 Offset=0.000

References	Low Cal	High Cal
Readings	0.000	20.000
	0.021	0.757

Gamma Ray Calibration Report

Serial Number: GR5
Tool Model: OPEN
Performed: Sat Mar 27 12:11:05 2010

Calibrator Value: 1.0 GAPI

Background Reading: 0.0 cps
Calibrator Reading: 1.0 cps

Sensitivity: 0.6000 GAPI/cps