



**Borehole Compensated
Sonic Log**

DIGITAL LOG (785) 625-3858

| | | | |
|------------------------|-------------------------|-------------------------|--------------------------------------|
| API No. | 15-065-23,622-00-00 | | |
| Company | H&C Oil Operating, Inc. | | |
| Well | Trexler No. 32-1 | | |
| Field | Wildcat | | |
| County | Graham | | |
| State | Kansas | | |
| Location | 1980' FNL& 1650' FEL | | |
| Sec: 32 | Twp: 6S | Rge: 23W | Other Services CNL/CDL MEL/DIL |
| Permanent Datum | Ground Level | Elevation 2459 | Elevation |
| Log Measured From | Kelly Bushing | 5 Ft. Above Perm. Datum | K.B. 2464 |
| Drilling Measured From | Kelly Bushing | | D.F. 2459 |
| | | | G.L. 2459 |

| | | | |
|------------------------|---------------|--|--|
| Date | 03/09/2010 | | |
| Run Number | Two | | |
| Type Log | BHC Sonic | | |
| Depth Driller | 3960 | | |
| Depth Logger | 3958 | | |
| Bottom Logged Interval | 3947 | | |
| Top Logged Interval | 300 | | |
| Type Fluid In Hole | Chemical | | |
| Salinity, PPM CL | 1,800 | | |
| Density | 9.1 | | |
| Level | Full | | |
| Max. Rec. Temp. F | 118 | | |
| Operating Rig Time | 4 1/2 Hours | | |
| Equipment -- Location | 17 Hays | | |
| Recorded By | Mike Garrison | | |
| Witnessed By | Marc Downing | | |

| Run No. | Bit | Borehole Record | | Casing Record | |
|---------|-------|-----------------|------|---------------|-----|
| | | From | To | From | To |
| 1 | 12.25 | 00 | 310 | 8.625 | 24# |
| 2 | 7.875 | 310 | 3960 | | |
| | | | | | |
| | | | | | |
| | | | | | |
| | | | | | |
| | | | | | |
| | | | | | |
| | | | | | |
| | | | | | |

<<< Fold Here >>>

All interpretations are opinions based on inferences from electrical or other measurements and we cannot and do not guarantee the accuracy or correctness of any interpretation, and we shall not, except in the case of gross or willful negligence on our part, be liable or responsible for any loss, costs, damages, or expenses incurred or sustained by anyone resulting from any interpretation made by any of our officers, agents or employees. These interpretations are also subject to our general terms and conditions set out in our current Price Schedule.

Comments

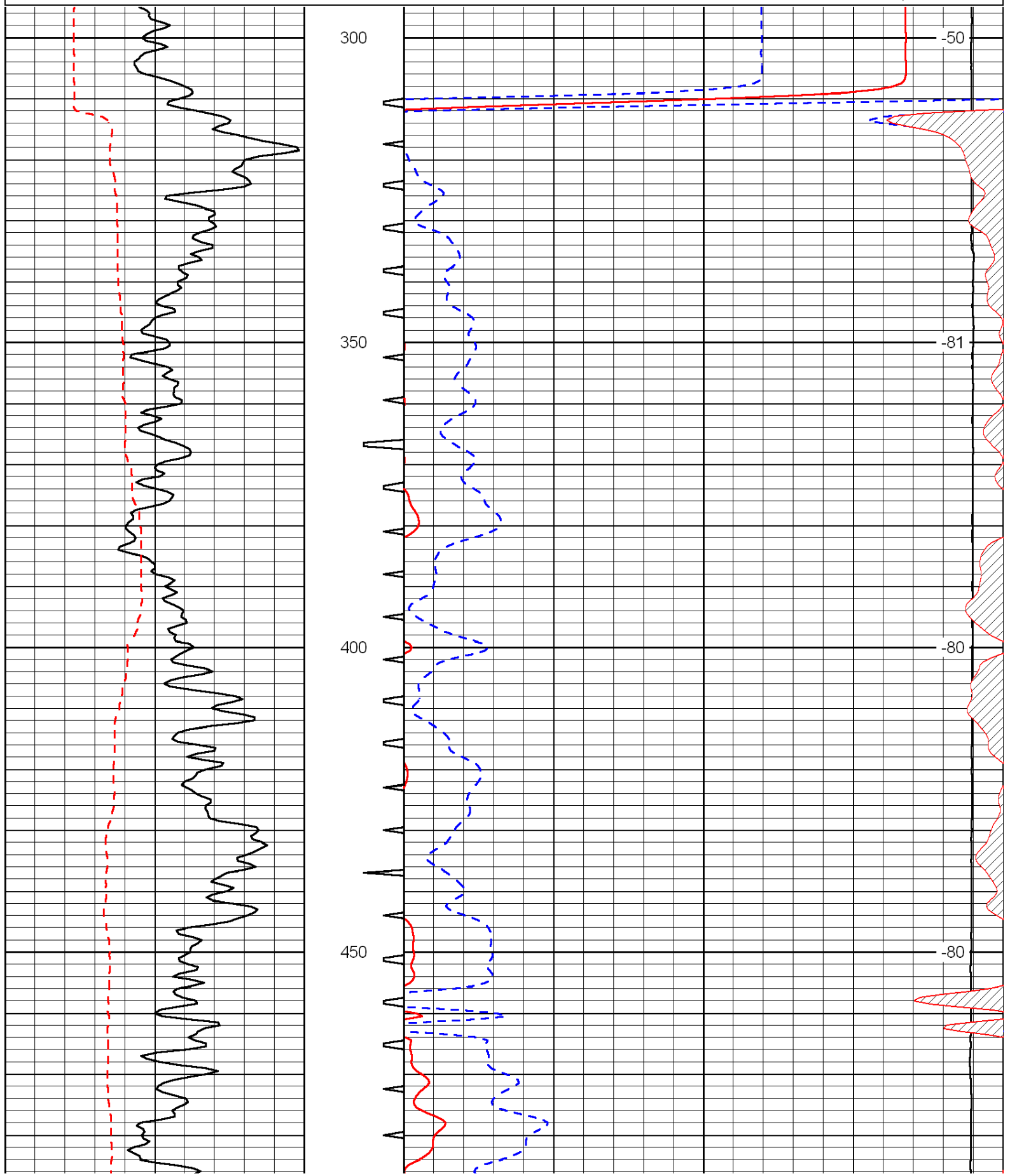
Thank you for using Log-Tech, Inc.
(785) 625-3858

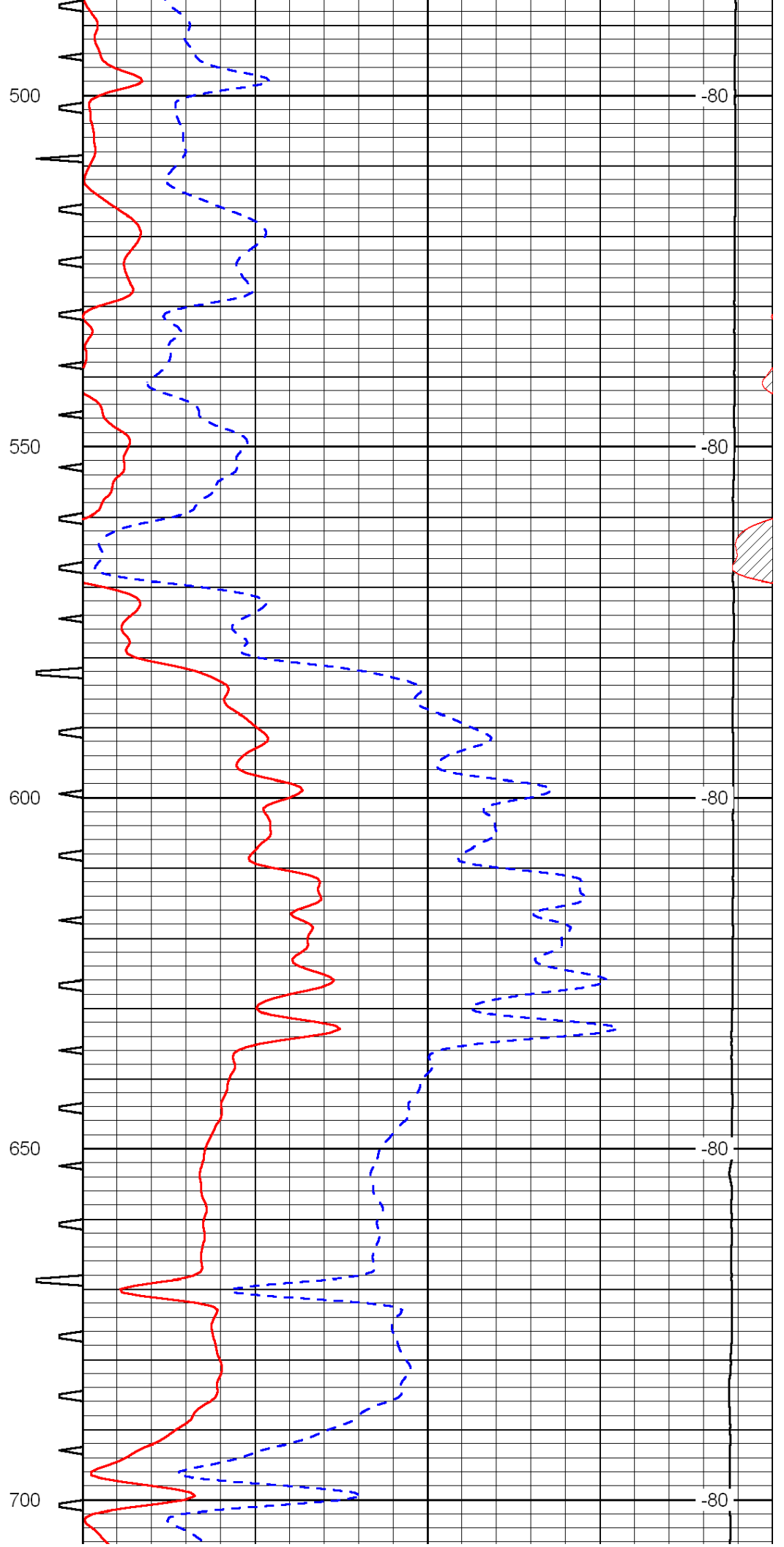
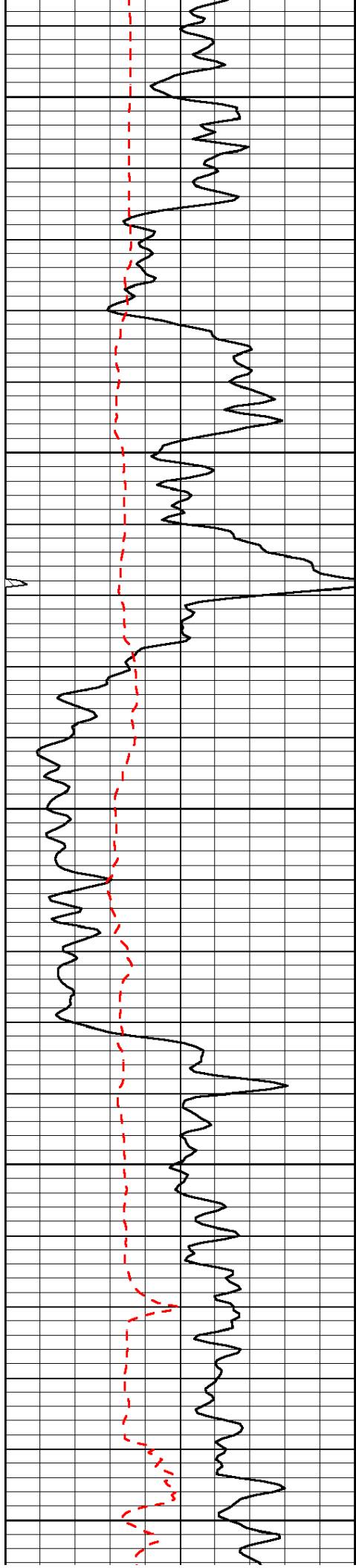
Hill City, 8 North to Y Rd, West to 240th Rd, 1 North, 3/4 East, South Into

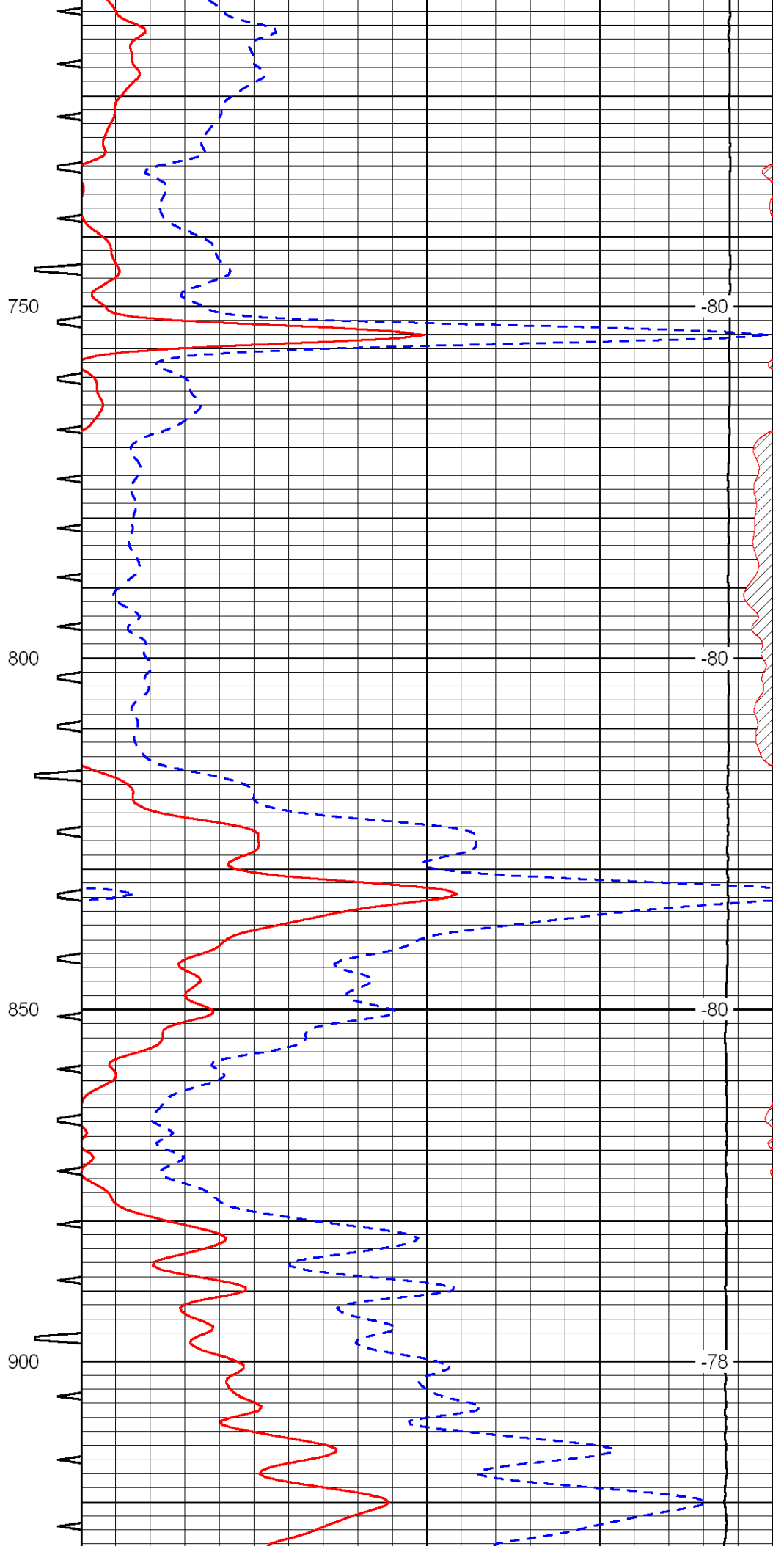
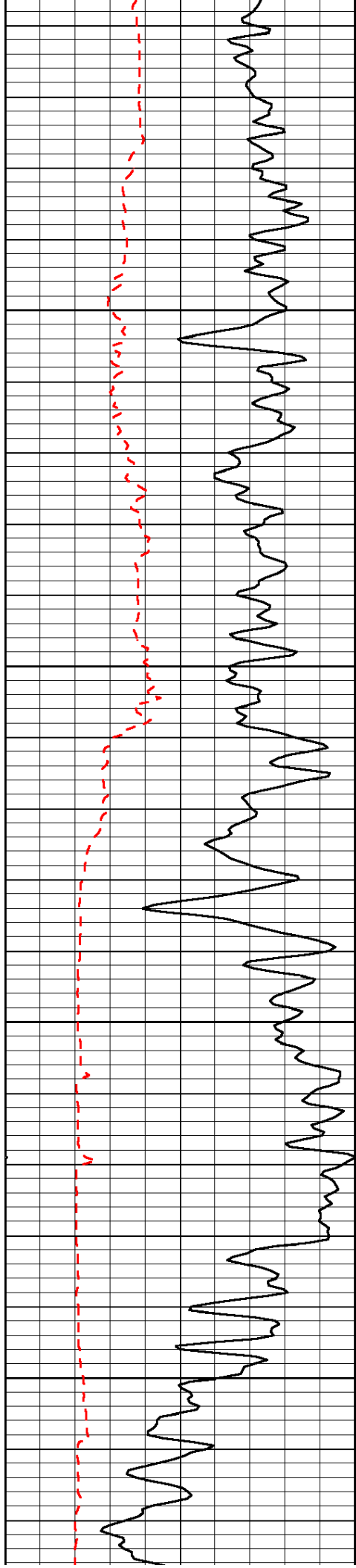
Database File: c:\warrior\data\h&c_trexler no. 32-1\h&chd.db
 Dataset Pathname: dil/hcstck
 Presentation Format: sonic
 Dataset Creation: Tue Mar 09 23:47:45 2010
 Charted by: Depth in Feet scaled 1:240

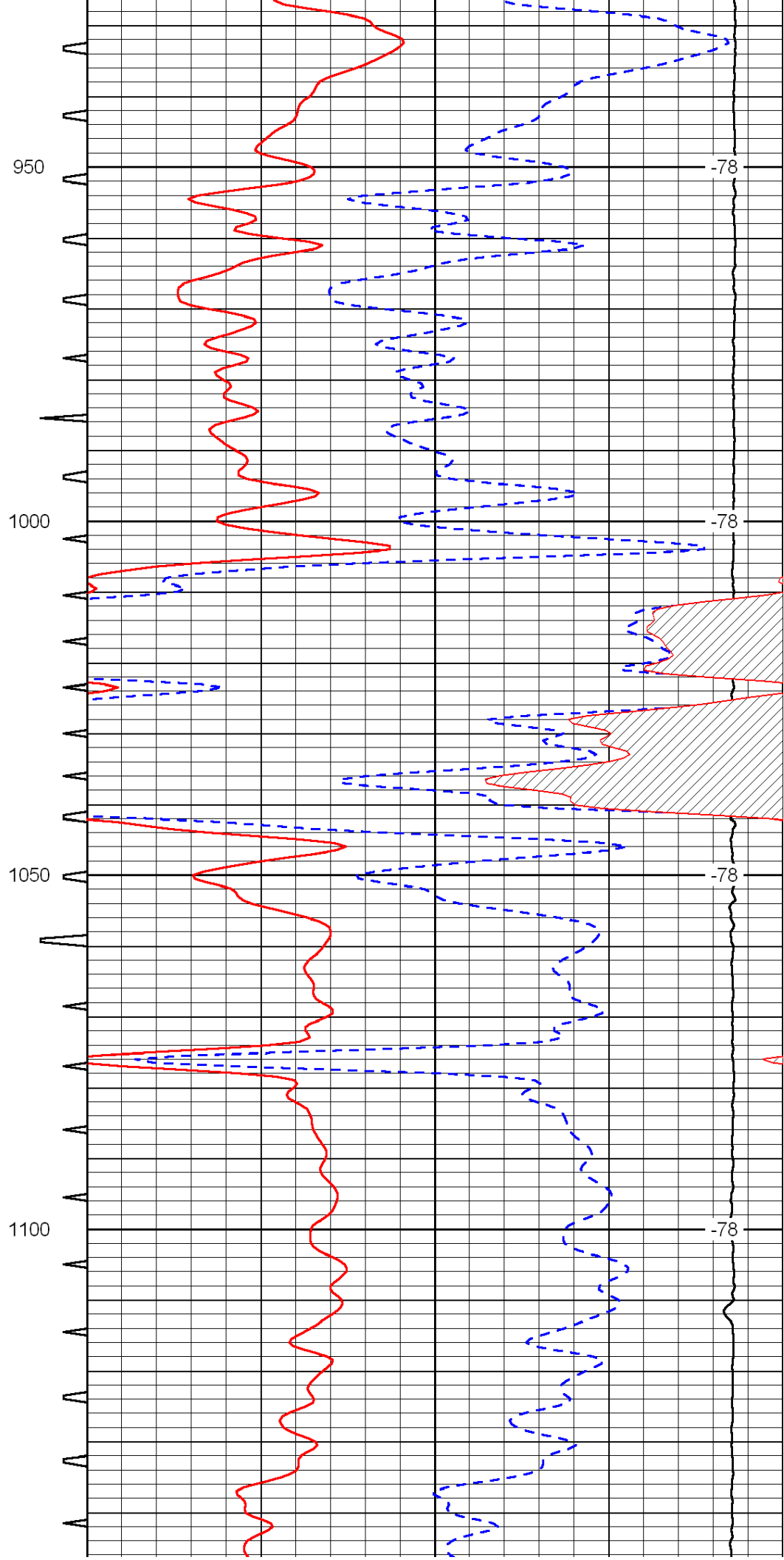
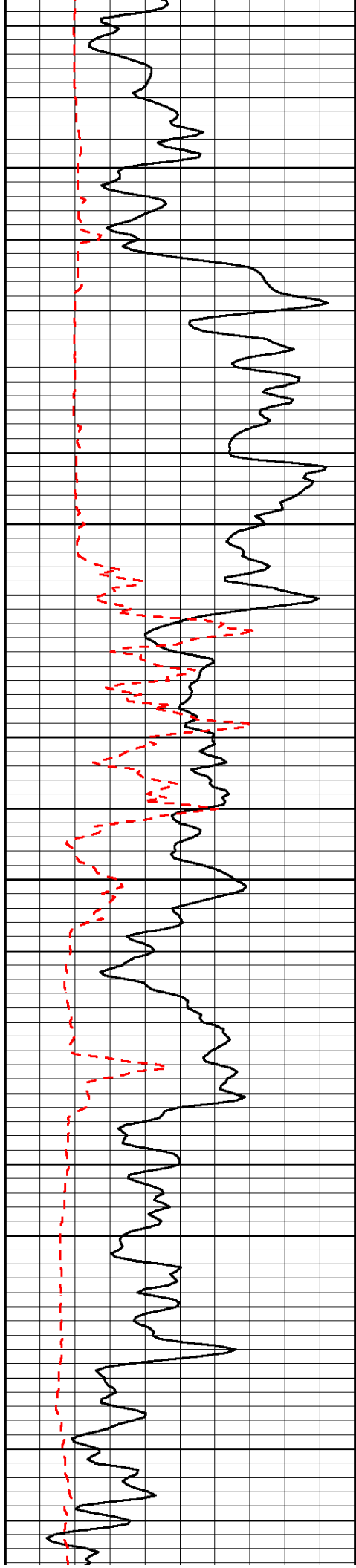
| | | | | | | |
|-----|--------------|-----|------------|-------|--------------------------------|-----|
| 0 | Gamma Ray | 150 | Sonic Int | 140 | Delta Time (usec/ft) (usec/ft) | 40 |
| 150 | Gamma Ray | 300 | 5 (msec) 0 | 30 | SPOR (pu) | -10 |
| 6 | Caliper (in) | 16 | | 15000 | LTEN (lb) (lb) | 0 |

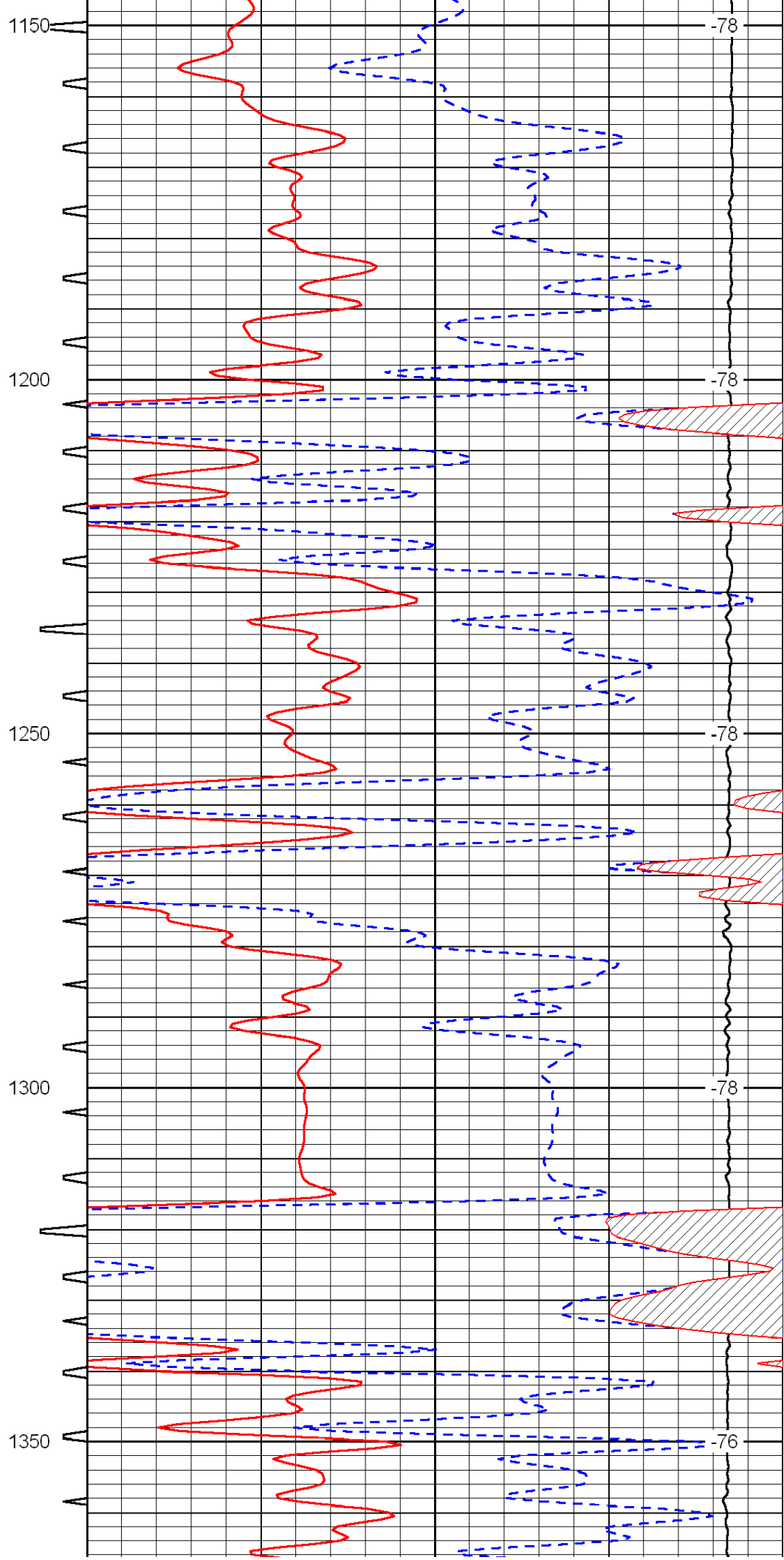
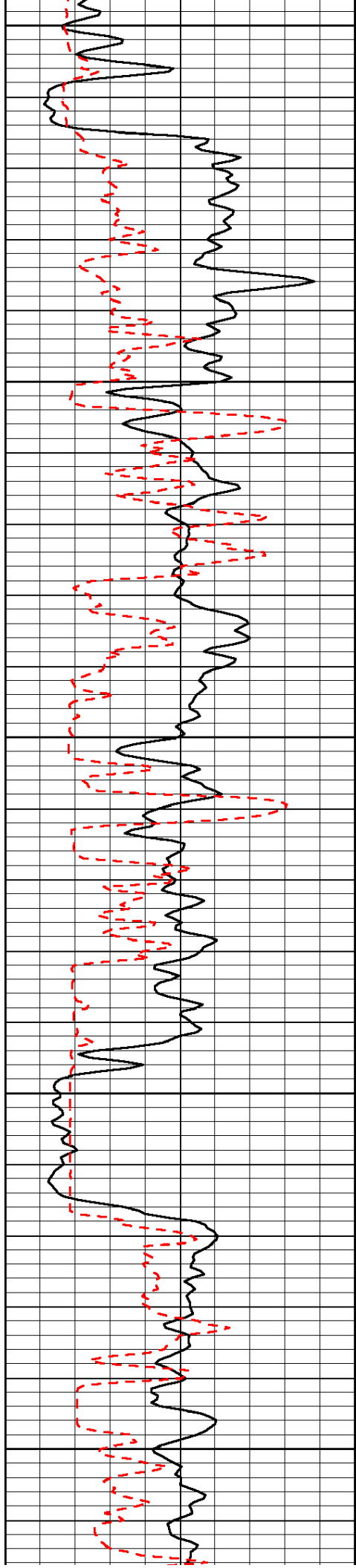
LSPD
(ft/min)

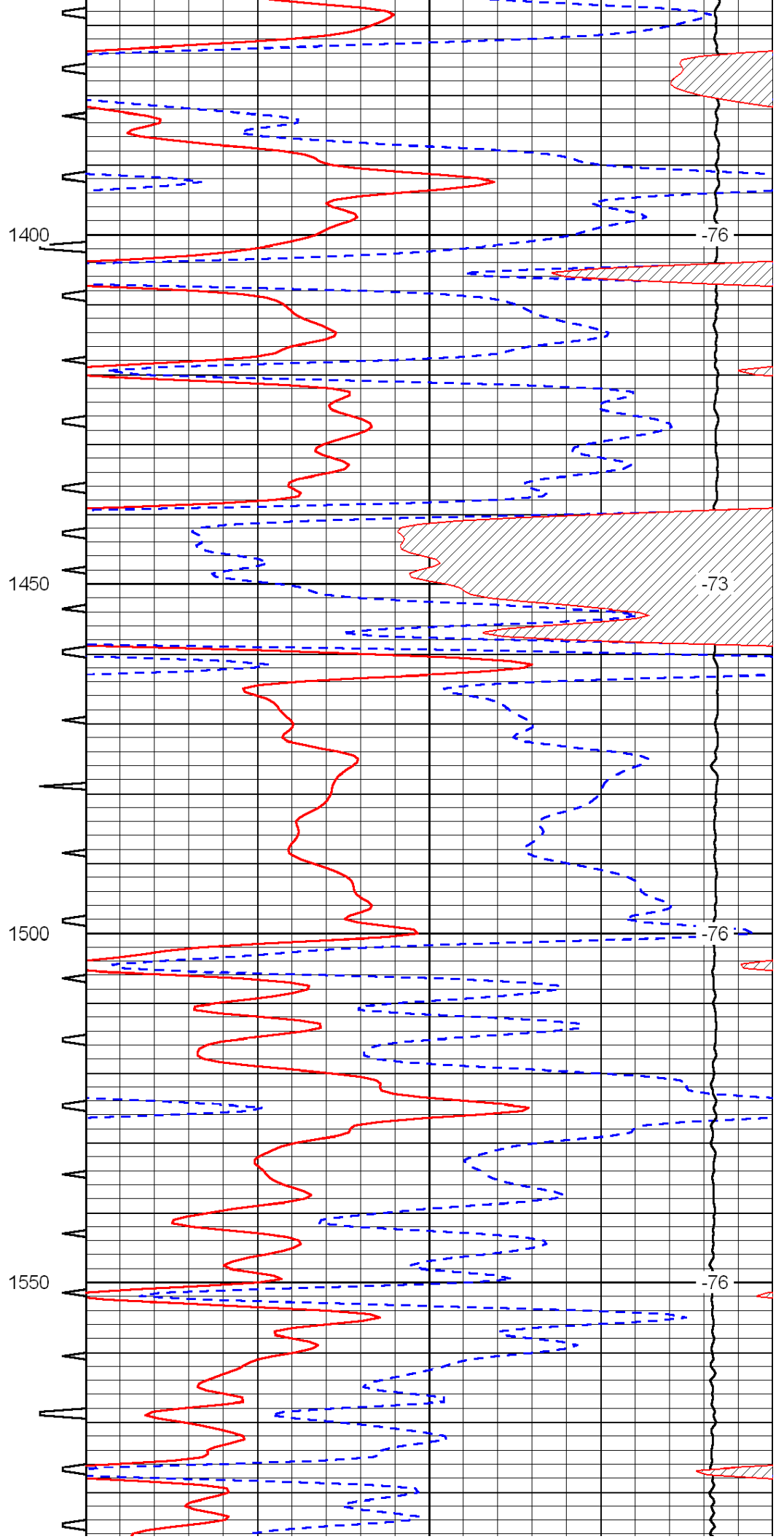
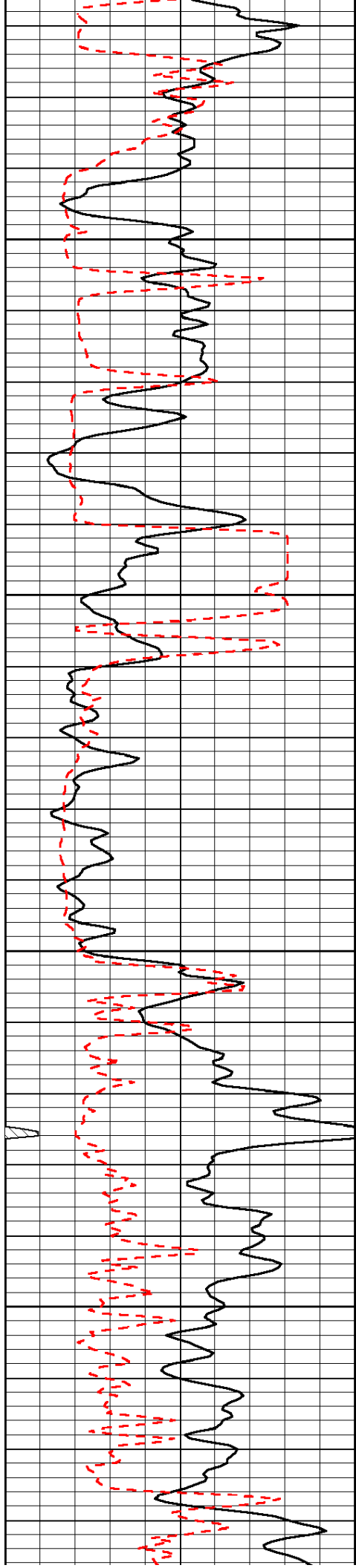


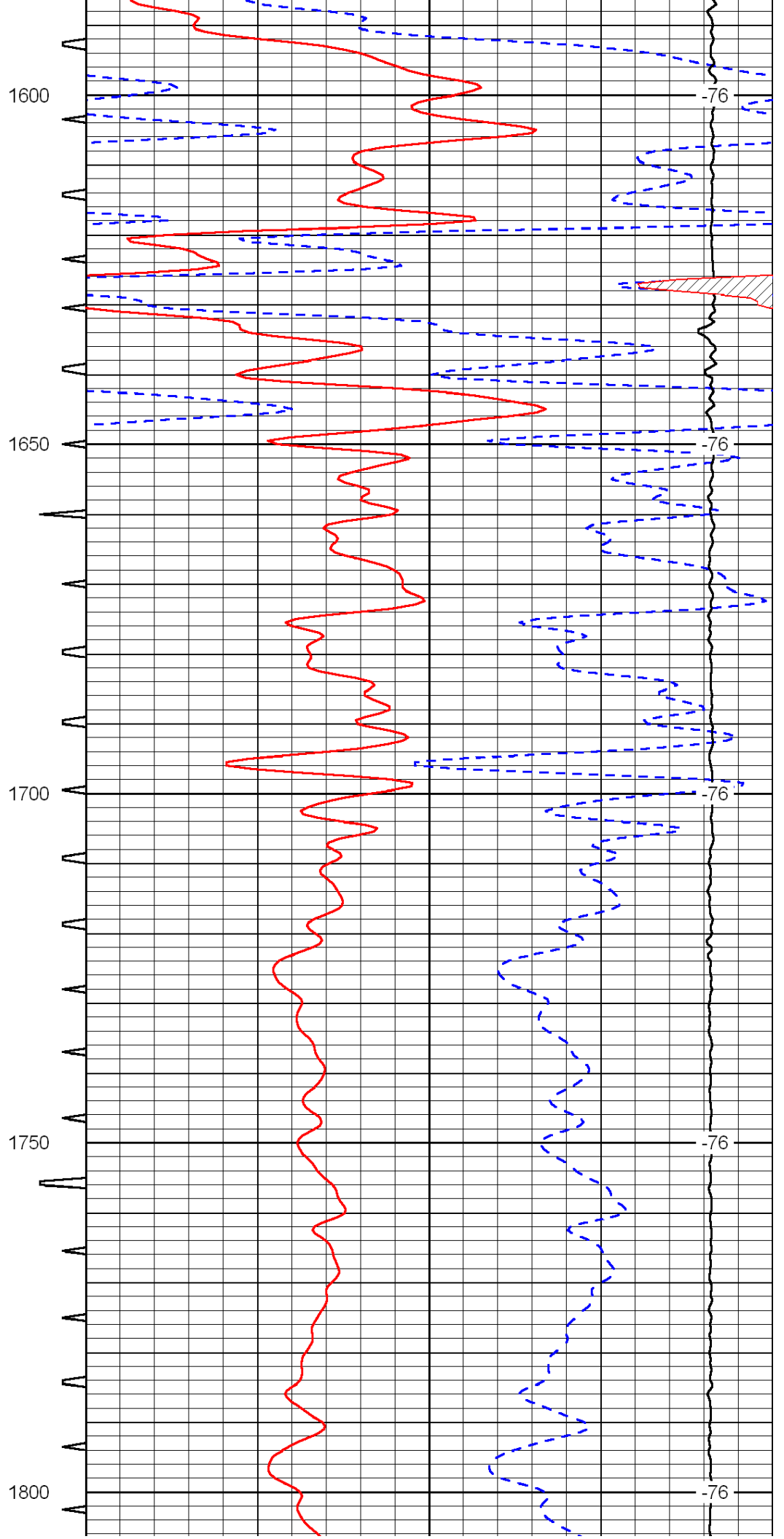
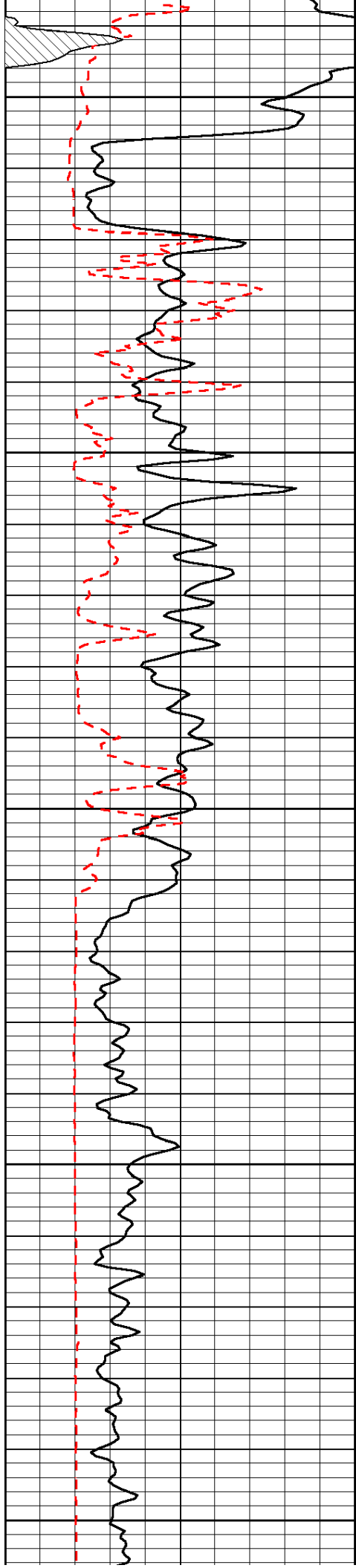


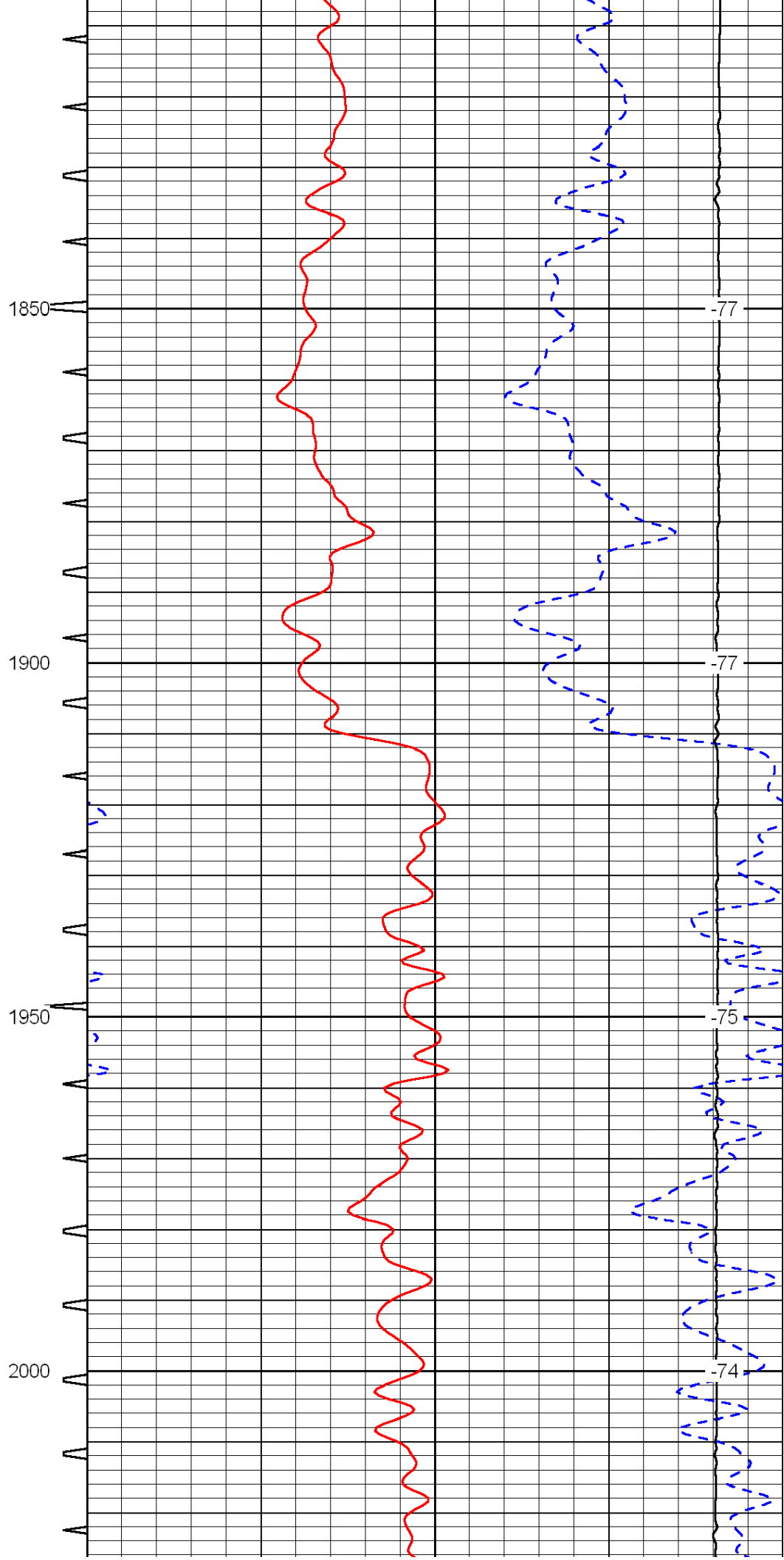
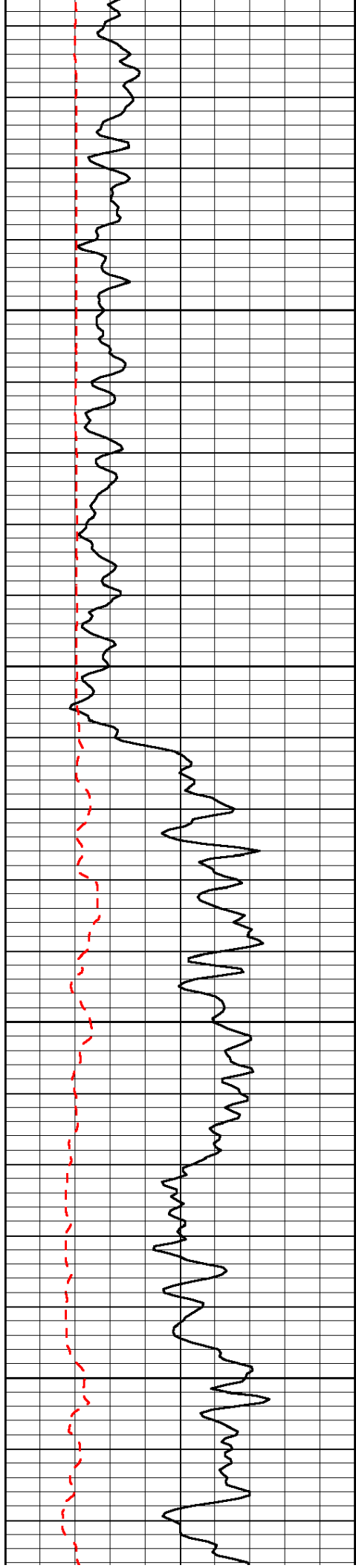


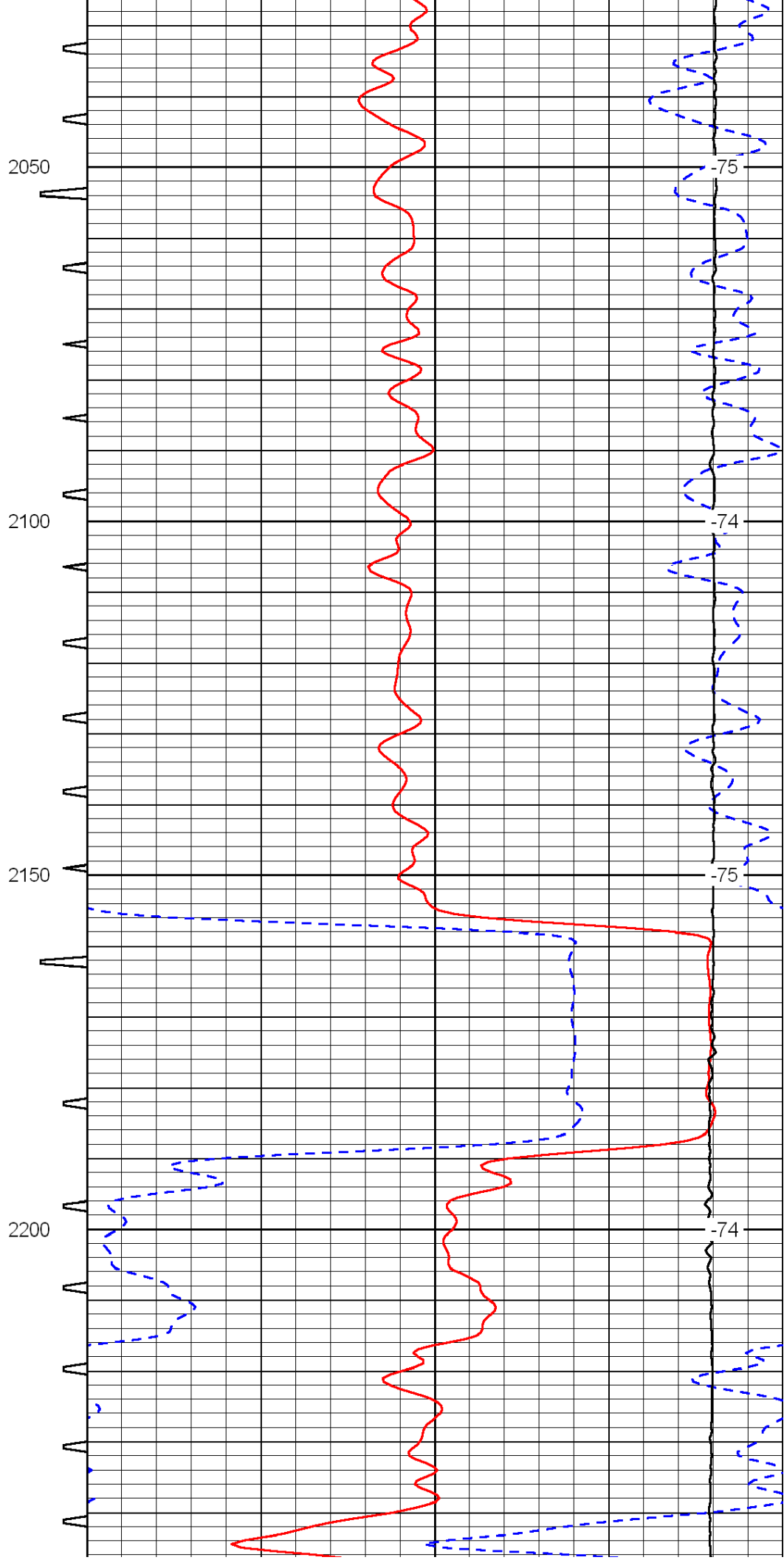
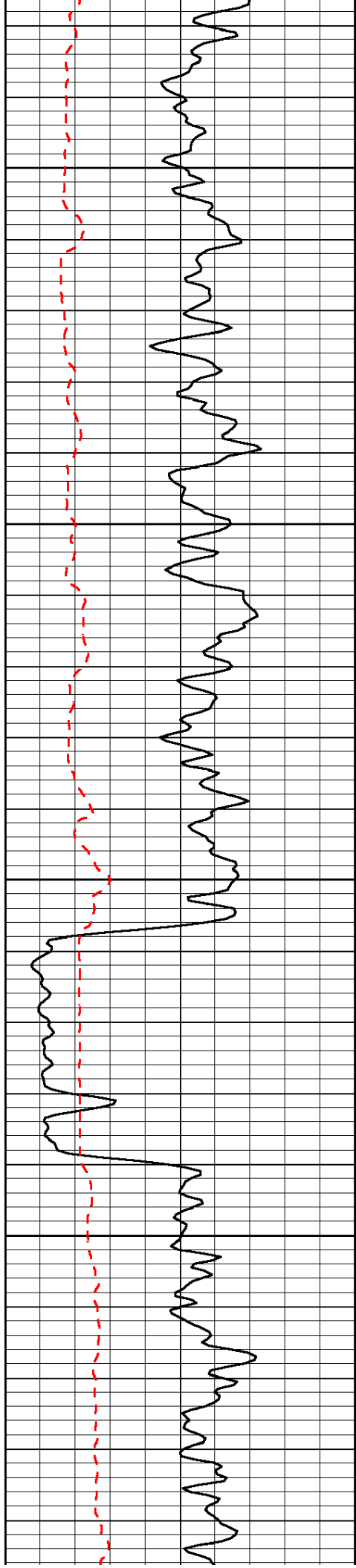


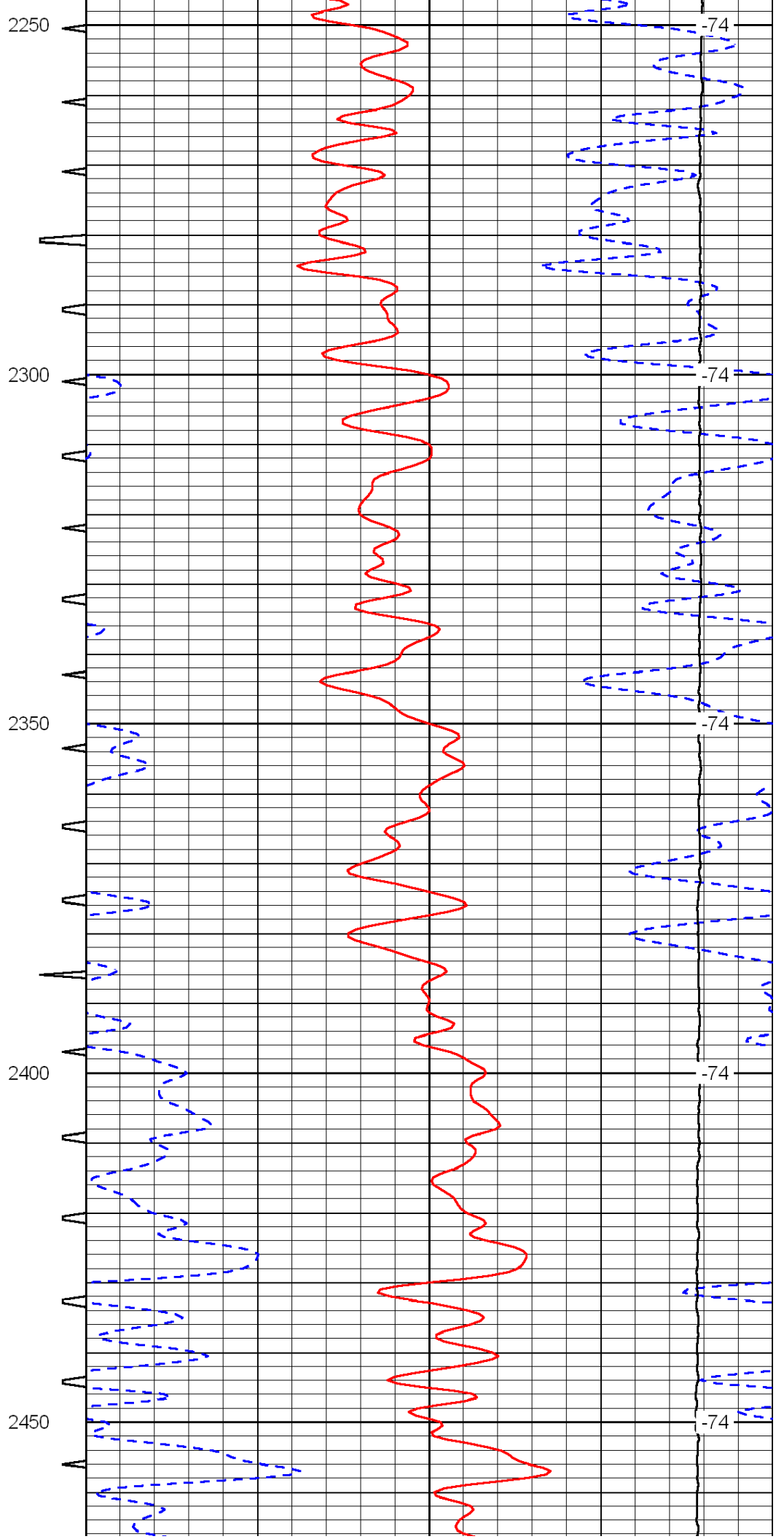
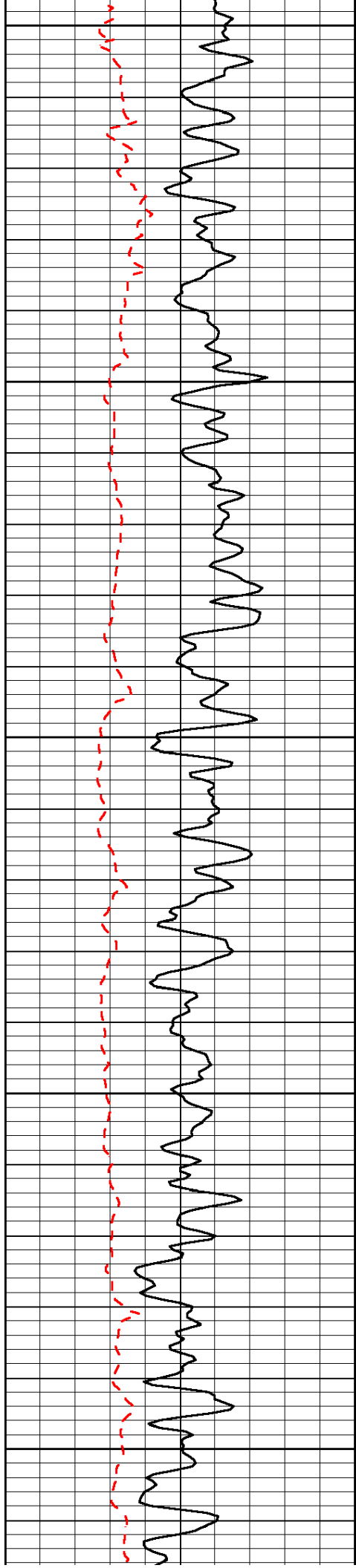


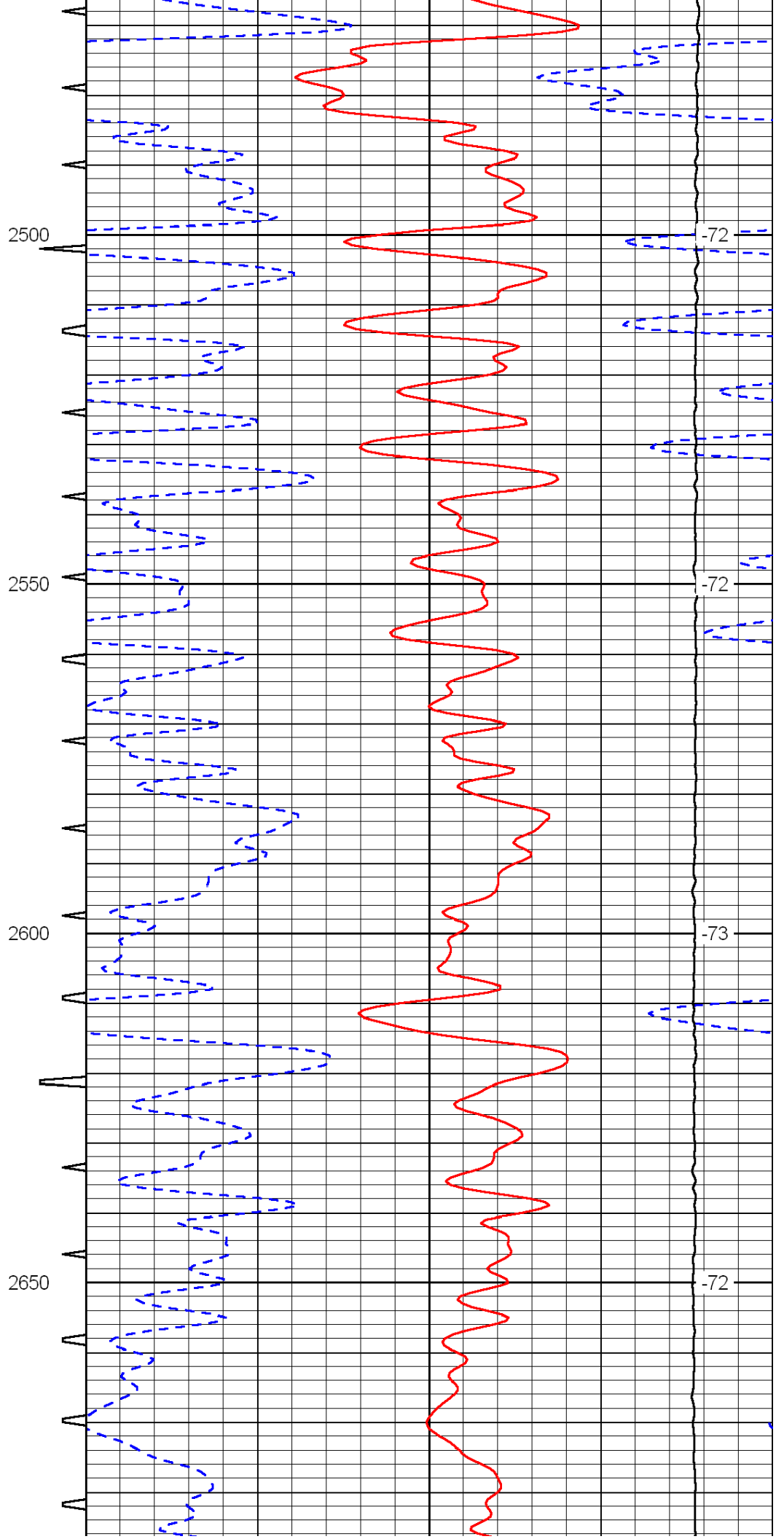
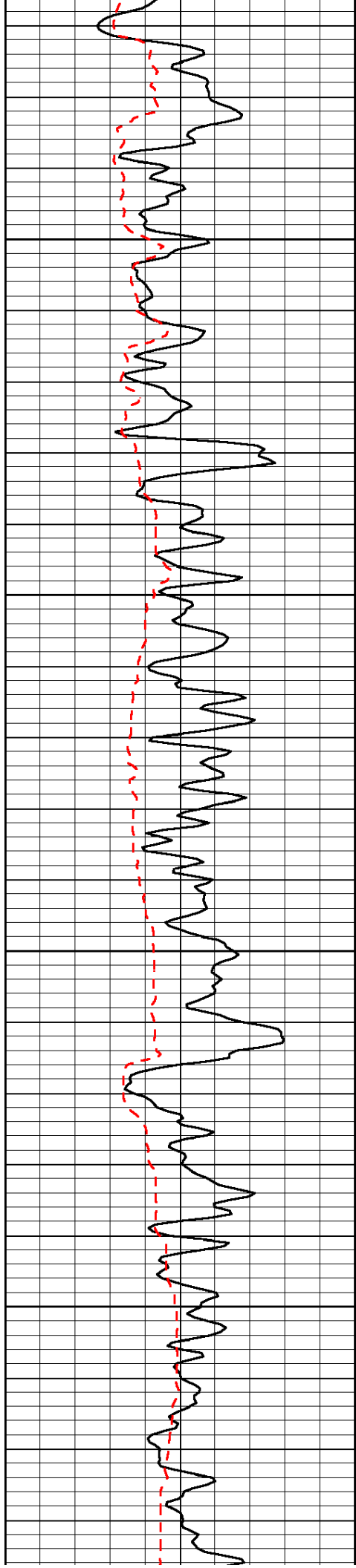


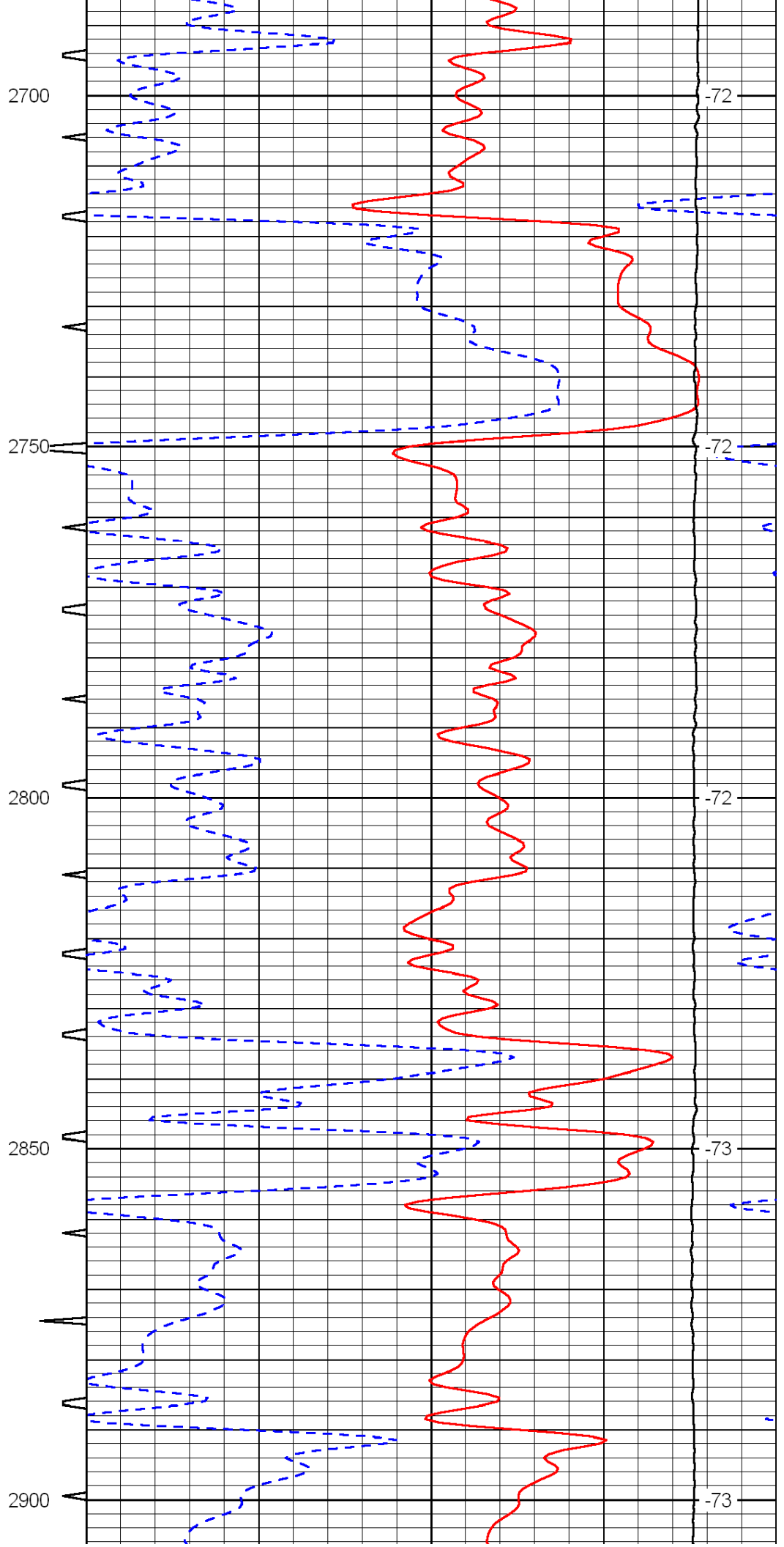
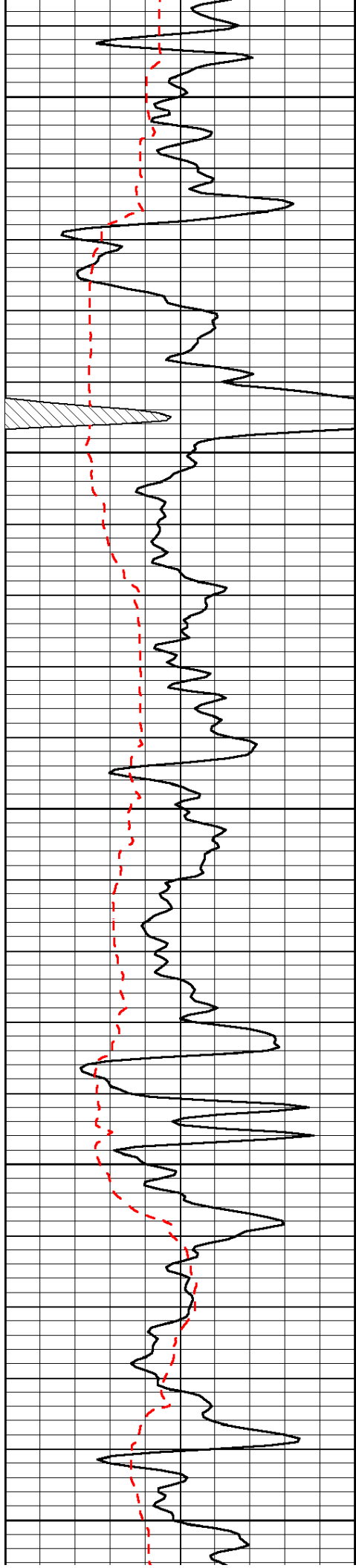


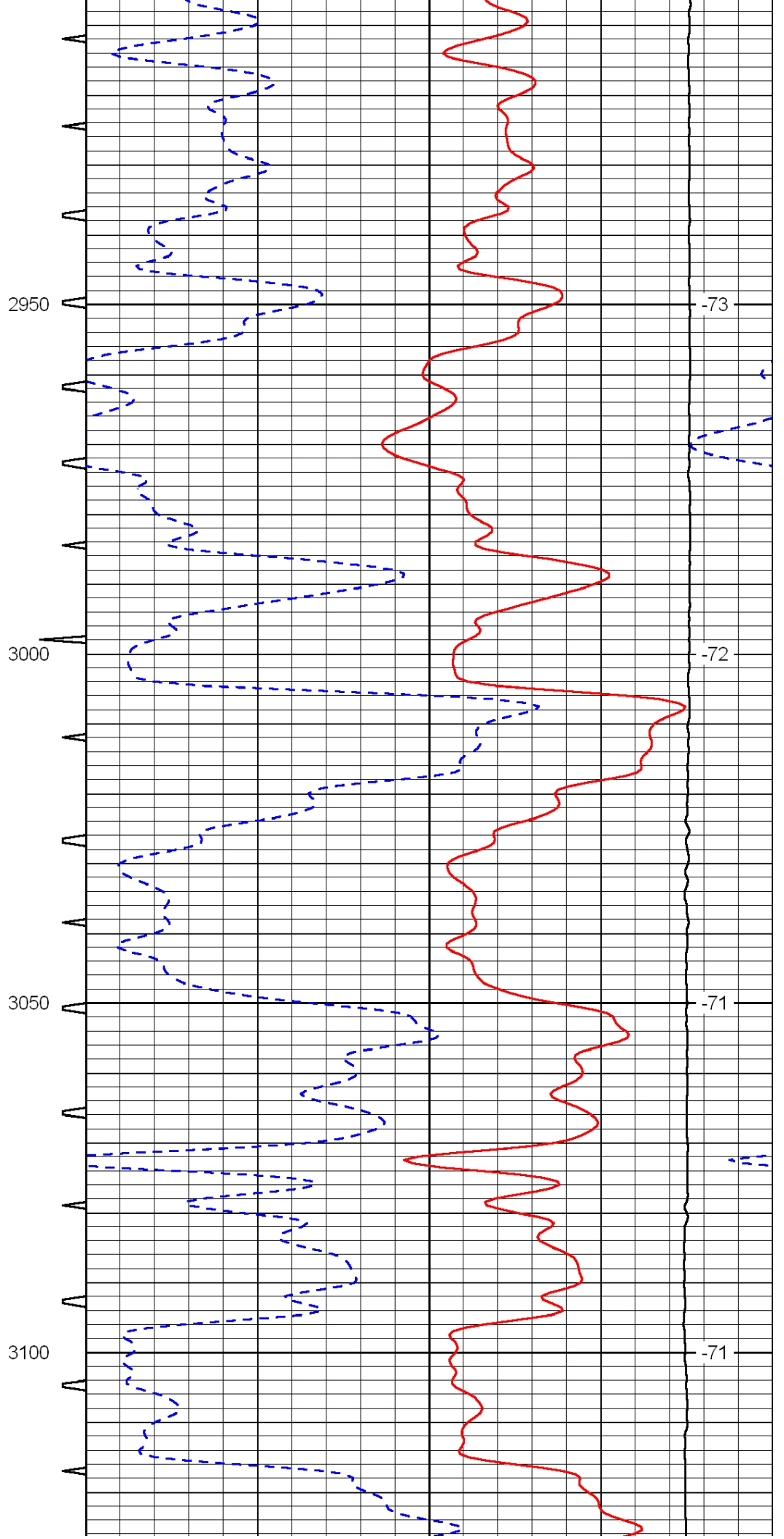
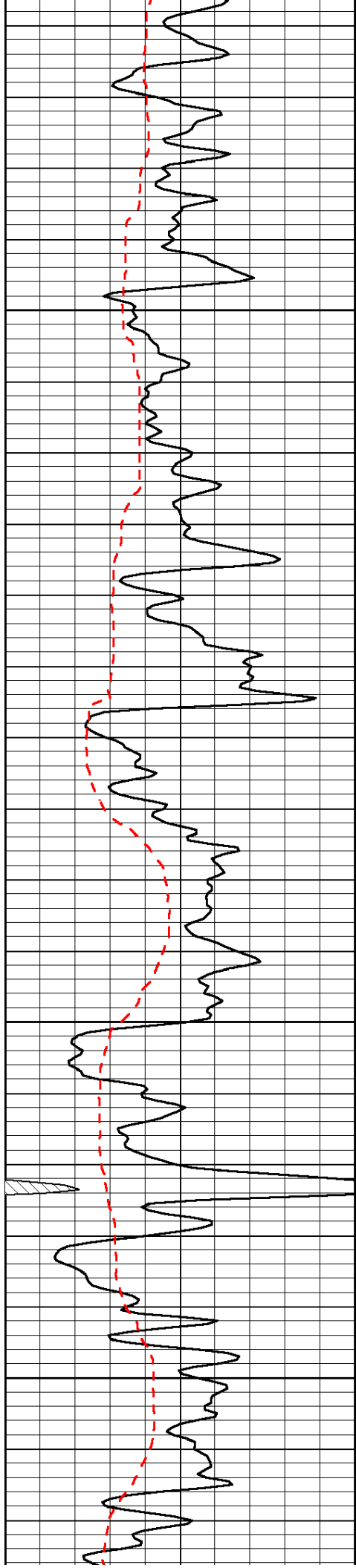


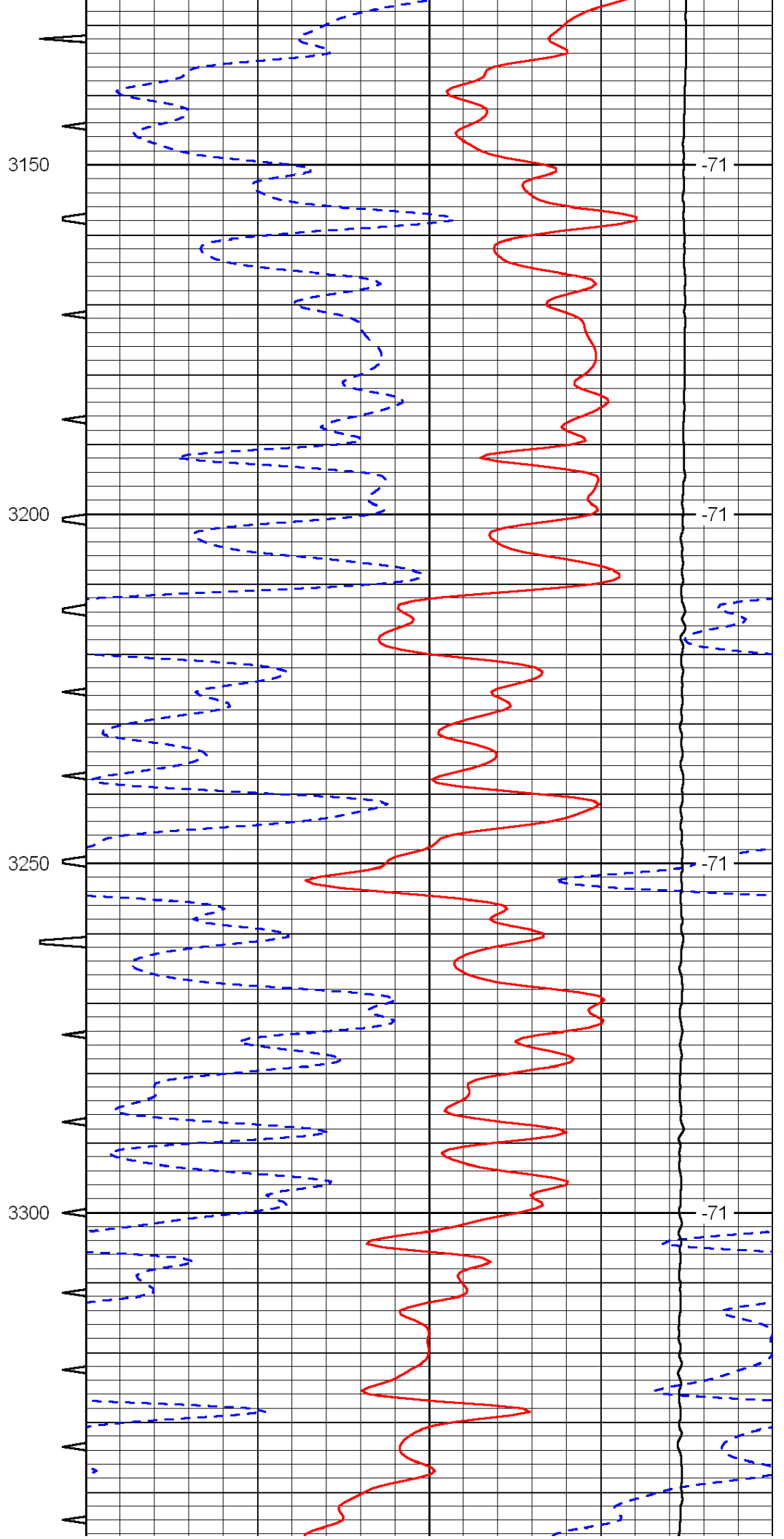
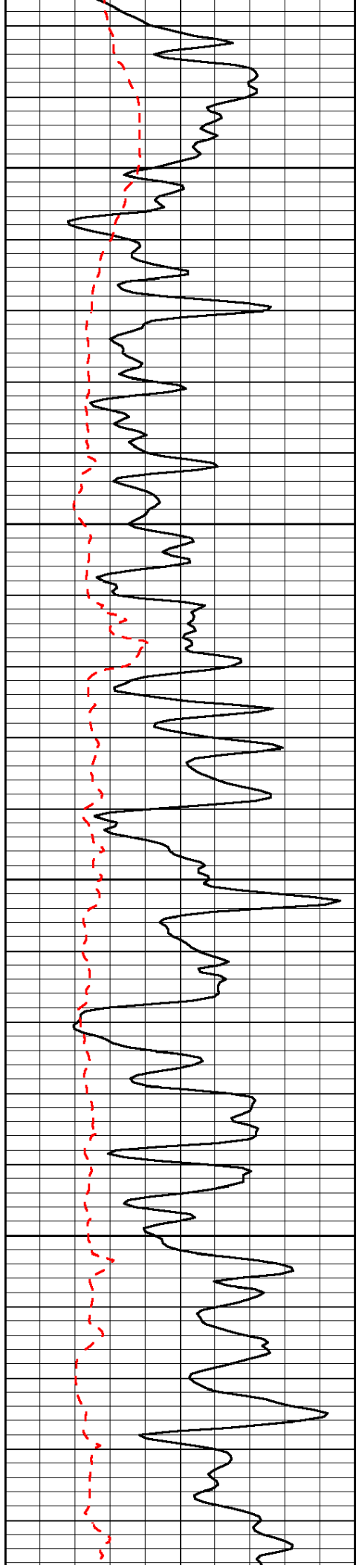


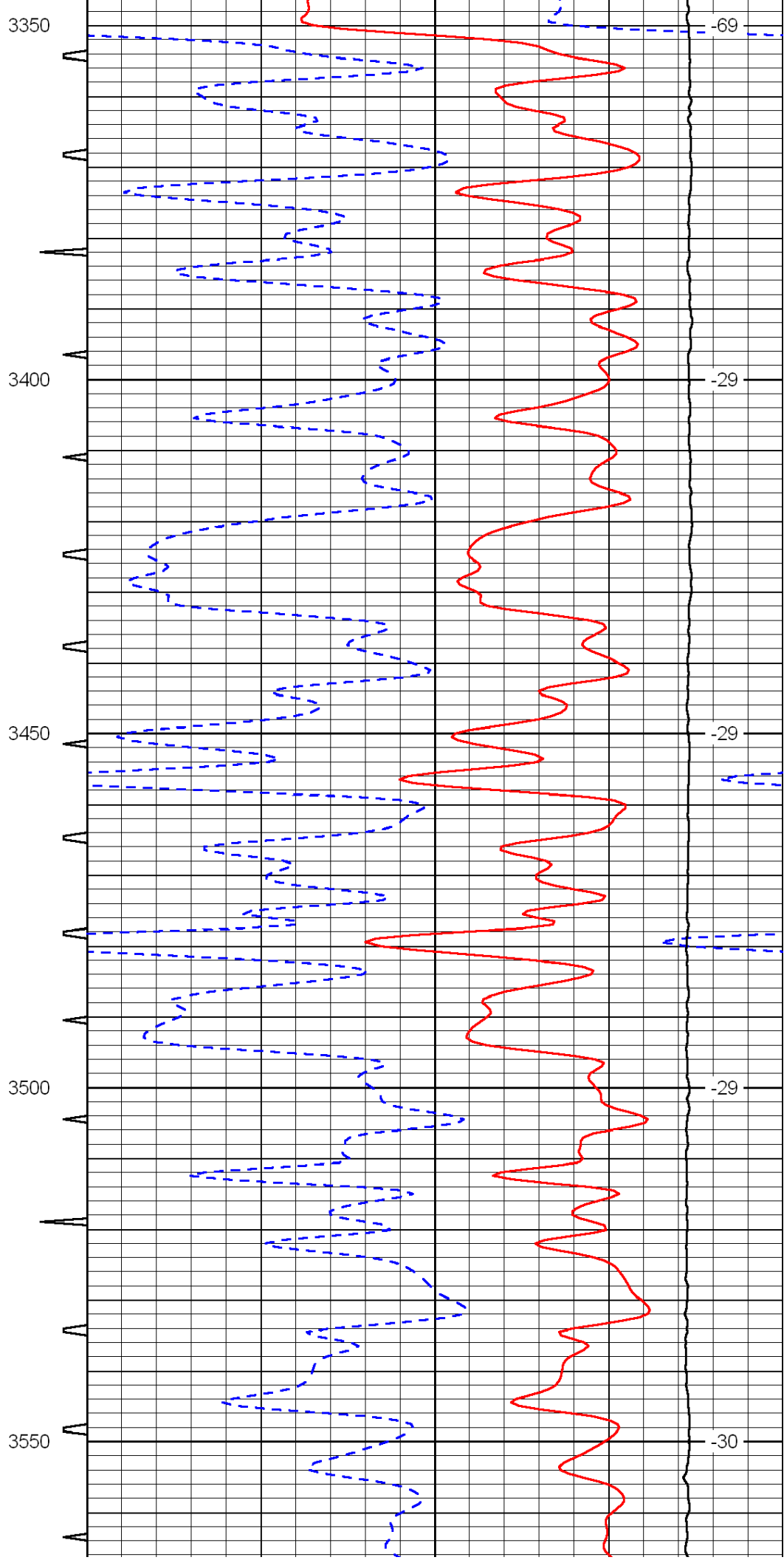
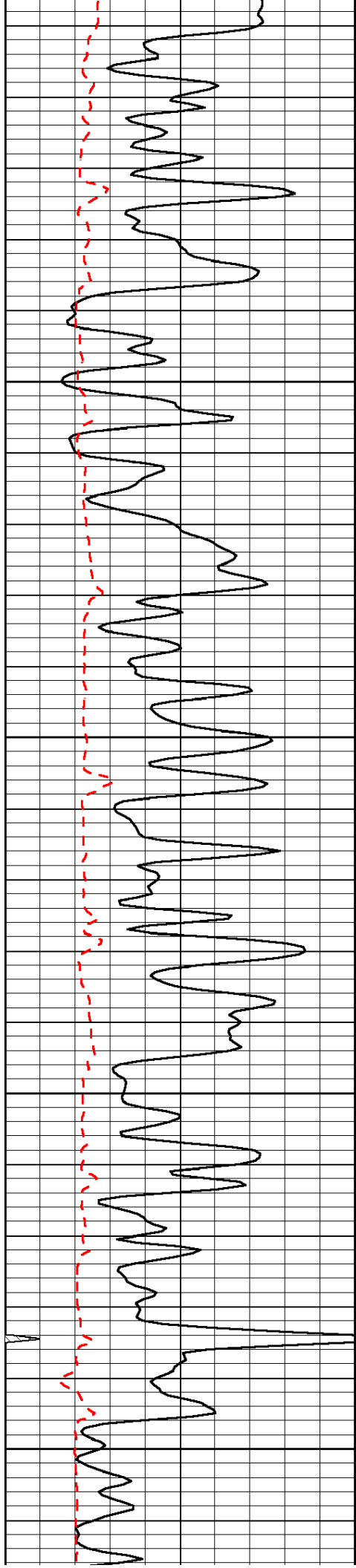


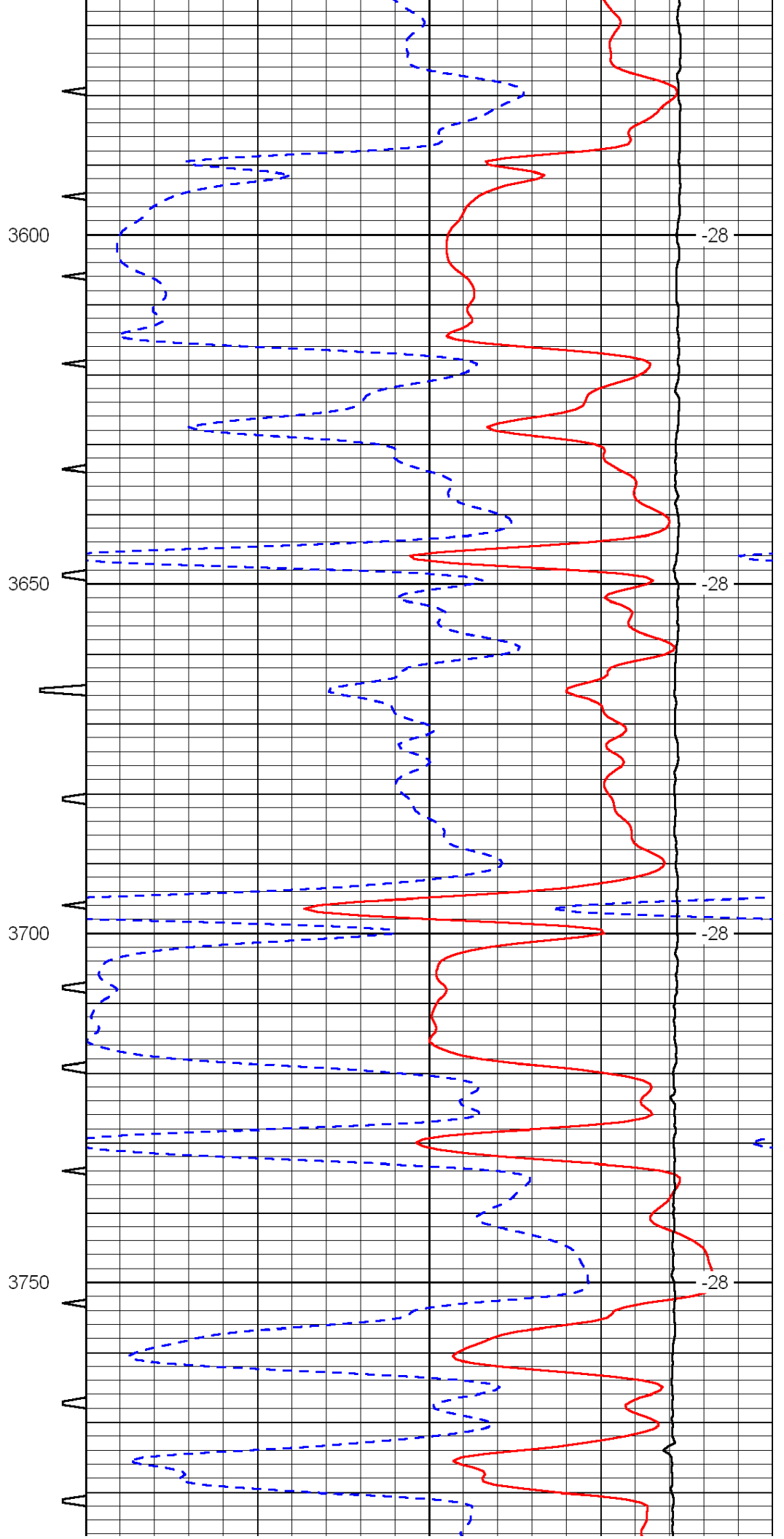
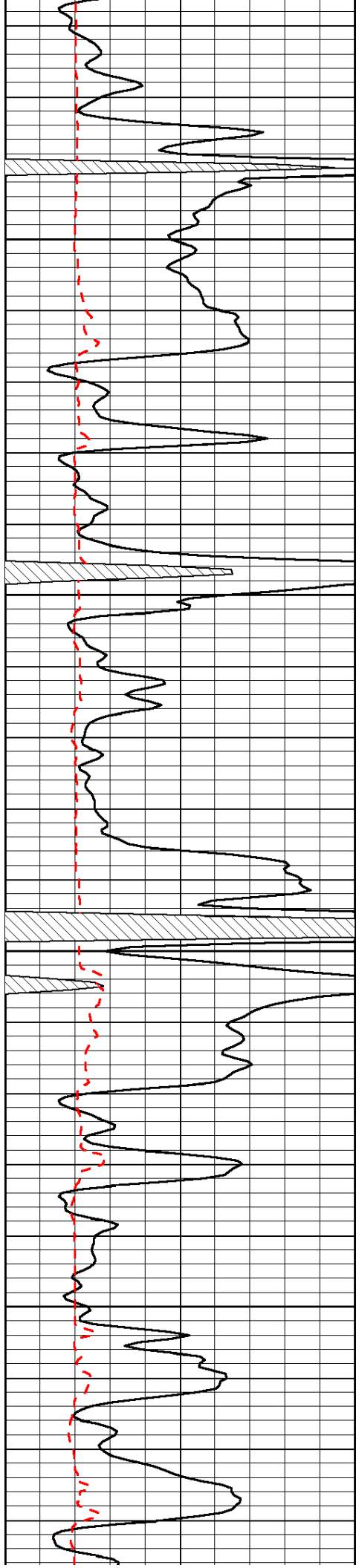


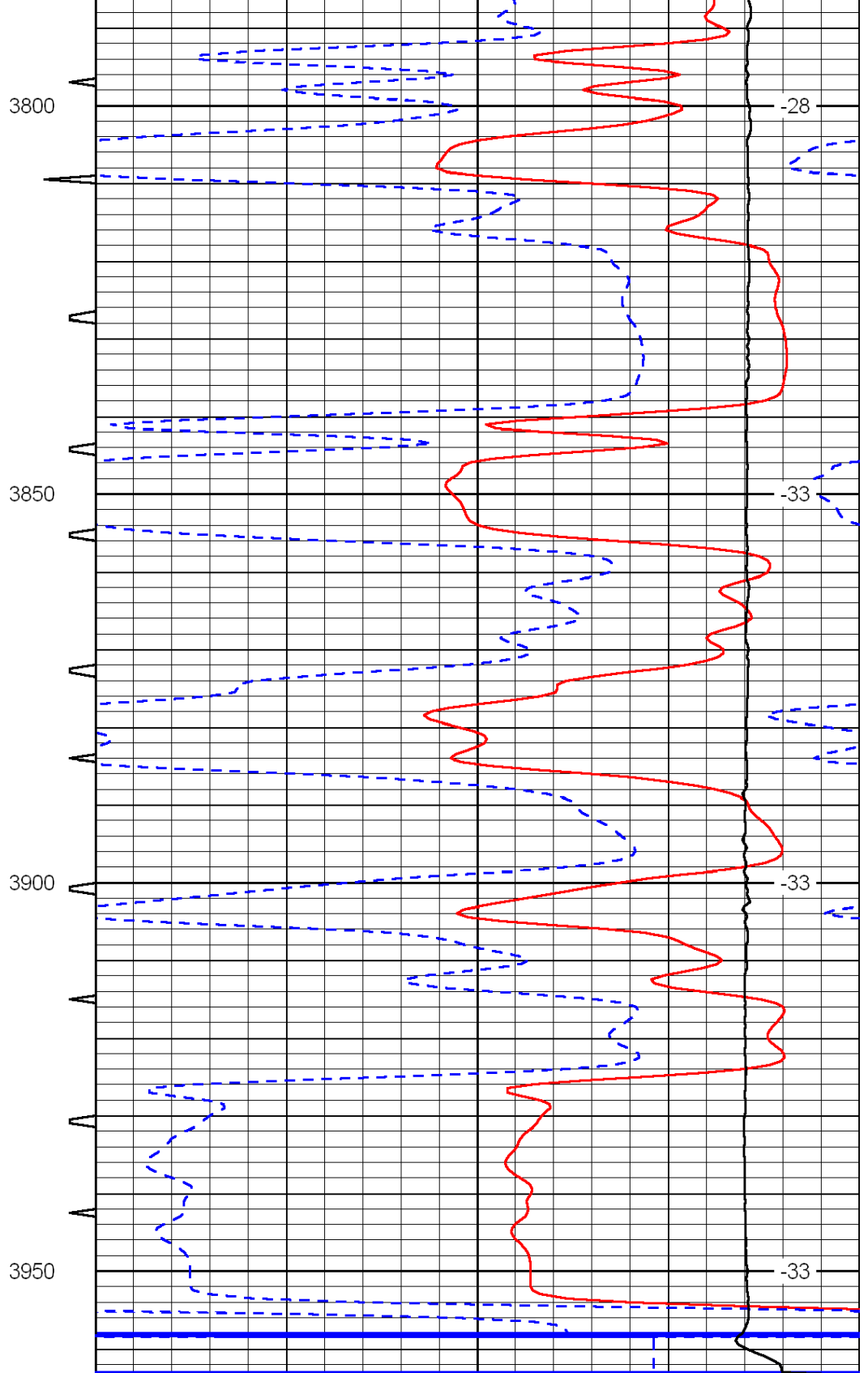
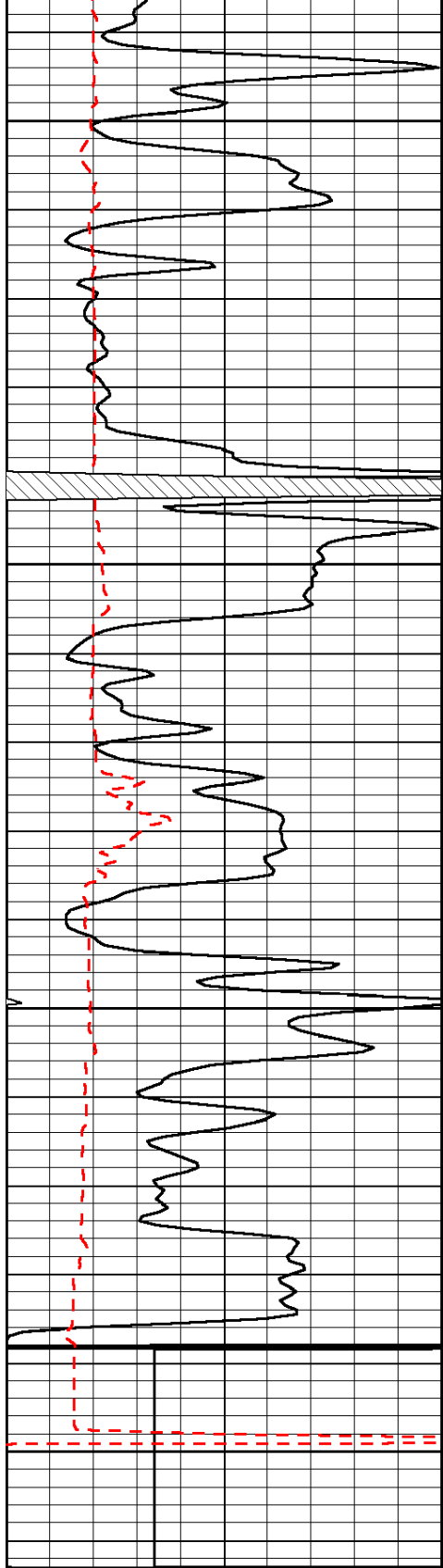












| | | | | | | |
|-----|--------------|-----|------------|-------|--------------------------------|-----|
| 0 | Gamma Ray | 150 | Sonic Int | 140 | Delta Time (usec/ft) (usec/ft) | 40 |
| 150 | Gamma Ray | 300 | 5 (msec) 0 | 30 | SPOR (pu) | -10 |
| 6 | Caliper (in) | 16 | | 15000 | LTEN (lb) (lb) | 0 |

LSPD
(ft/min)