



# Microresistivity Log

**DIGITAL LOG** (785) 625-3858

API No.	15-053-21,234-00-00		
Company	Trans Pacific Oil Corporation		
Well	Ford 'A' No. 1-19		
Field	Wilson Creek		
County	Ellsworth	State	Kansas
Location	2970' FSL & 330' FWL		
Sec: 19	Twp: 14S	Rge: 10W	
Permanent Datum	Ground Level	Elevation	1669
Log Measured From	Kelly Bushing	7 Ft. Above Perm. Datum	
Drilling Measured From	Kelly Bushing		
		Other Services	CNL/CDL MEL/DIL
		Elevation	K.B. 1676 D.F. 1669 G.L. 1669

Date	02/25/2010	
Run Number	Two	
Depth Driller	2965	
Depth Logger	2960	
Bottom Logged Interval	2959	
Top Log Interval	1200	
Casing Driller	8.625 @ 263	
Casing Logger	260	
Bit Size	7.875	
Type Fluid in Hole	Chemical	
Salinity, ppm CL	10,500	
Density / Viscosity	9.2	55
pH / Fluid Loss	9.5	9.2
Source of Sample	Flowline	
Rm @ Meas. Temp	.25 @	65
Rmf @ Meas. Temp	.18 @	65
Rmc @ Meas. Temp	.33 @	65
Source of Rmf / Rmc	Charts	
Rm @ BHT	.15 @	108
Operating Rig Time	4 Hours	
Max Rec. Temp. F	108	
Equipment Number	10	
Location	Hays	
Recorded By	Jason Wellbrock	
Witnessed By	Bryce Bidleman	

<<< Fold Here >>>

All interpretations are opinions based on inferences from electrical or other measurements and we cannot and do not guarantee the accuracy or correctness of any interpretation, and we shall not, except in the case of gross or willful negligence on our part, be liable or responsible for any loss, costs, damages, or expenses incurred or sustained by anyone resulting from any interpretation made by any of our officers, agents or employees. These interpretations are also subject to our general terms and conditions set out in our current Price Schedule.

### Comments

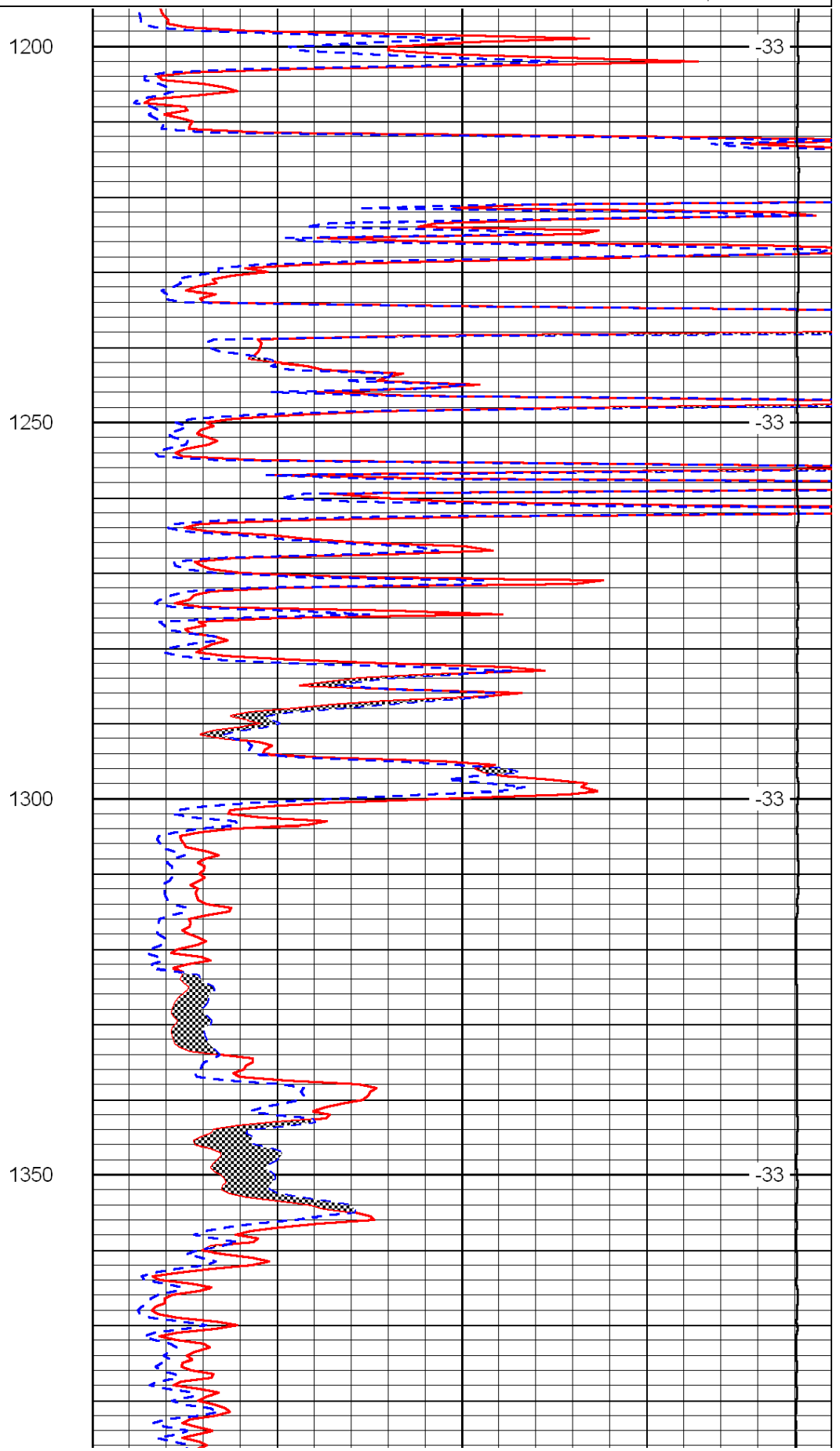
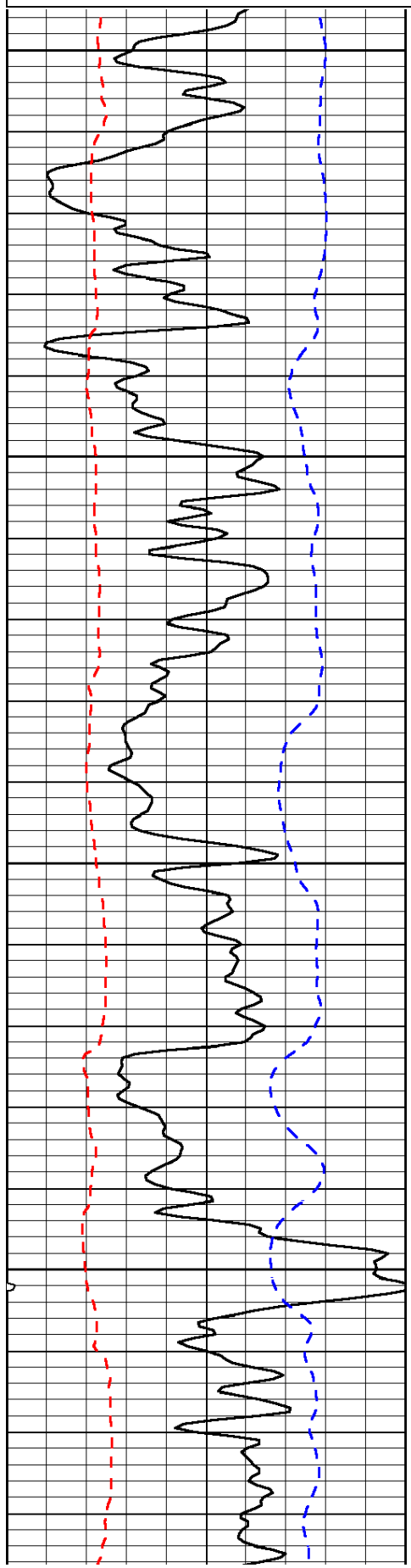
Thank you for using Log-Tech, Inc.  
(785) 625-3858

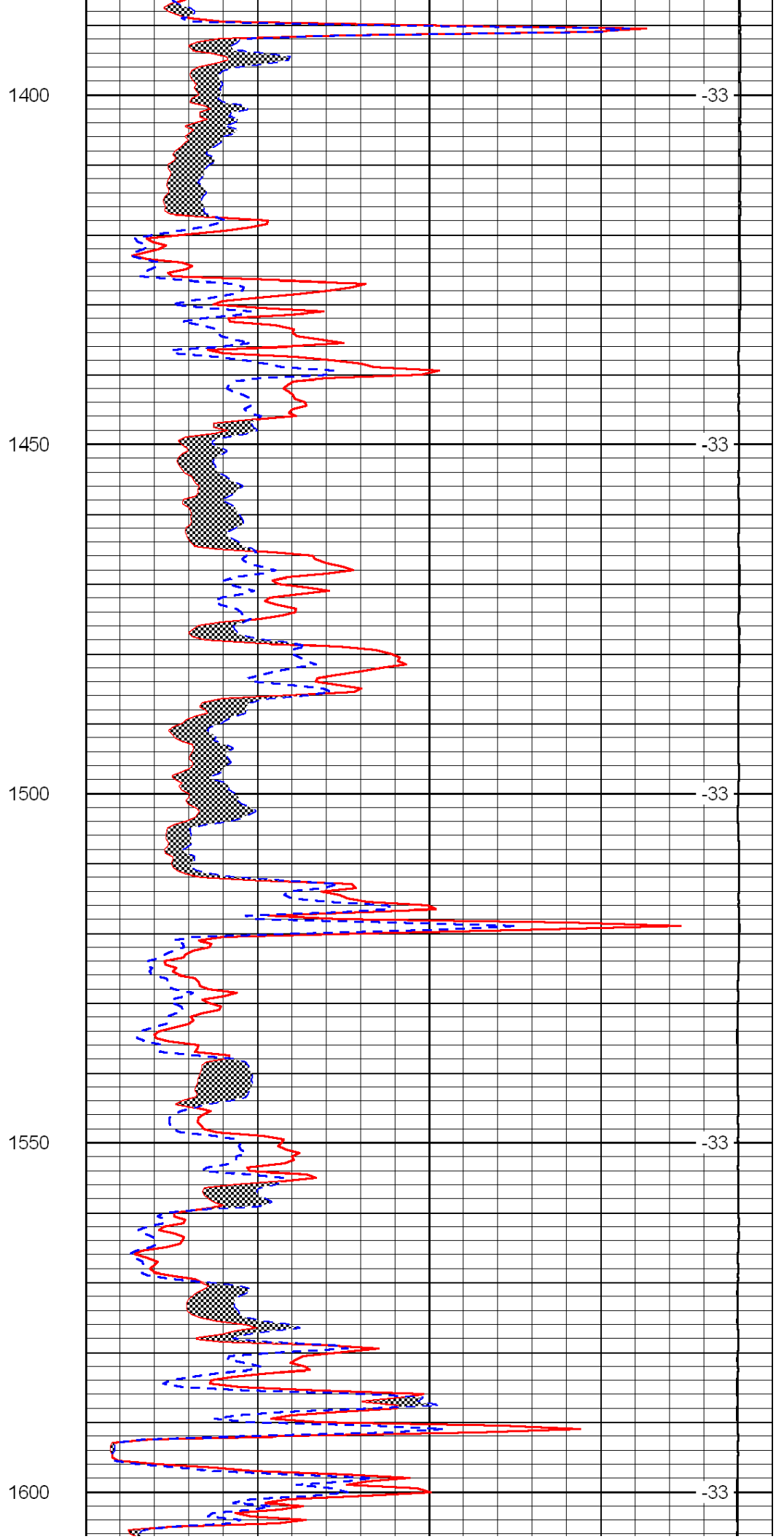
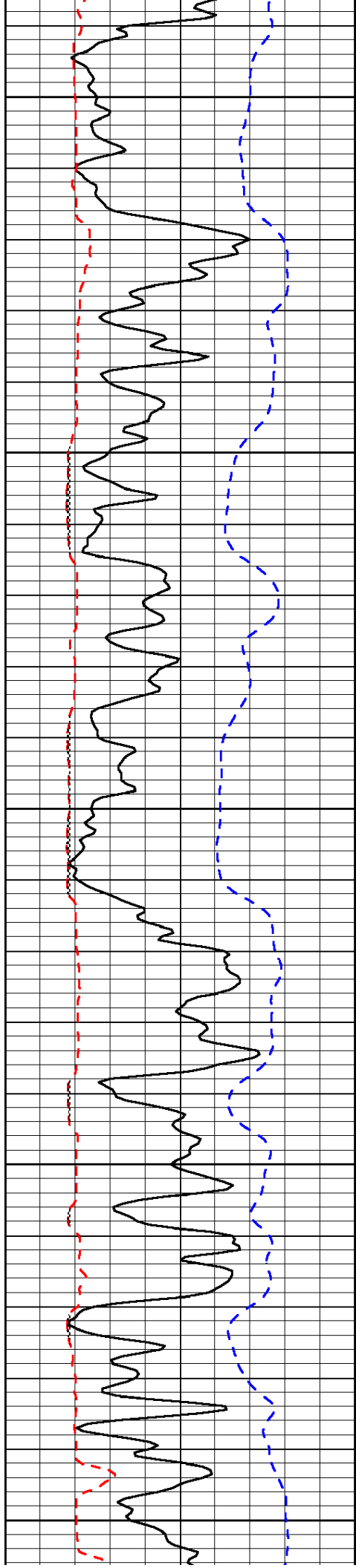
Wilson W3/4 to 1st rd., S 1/2, E Into

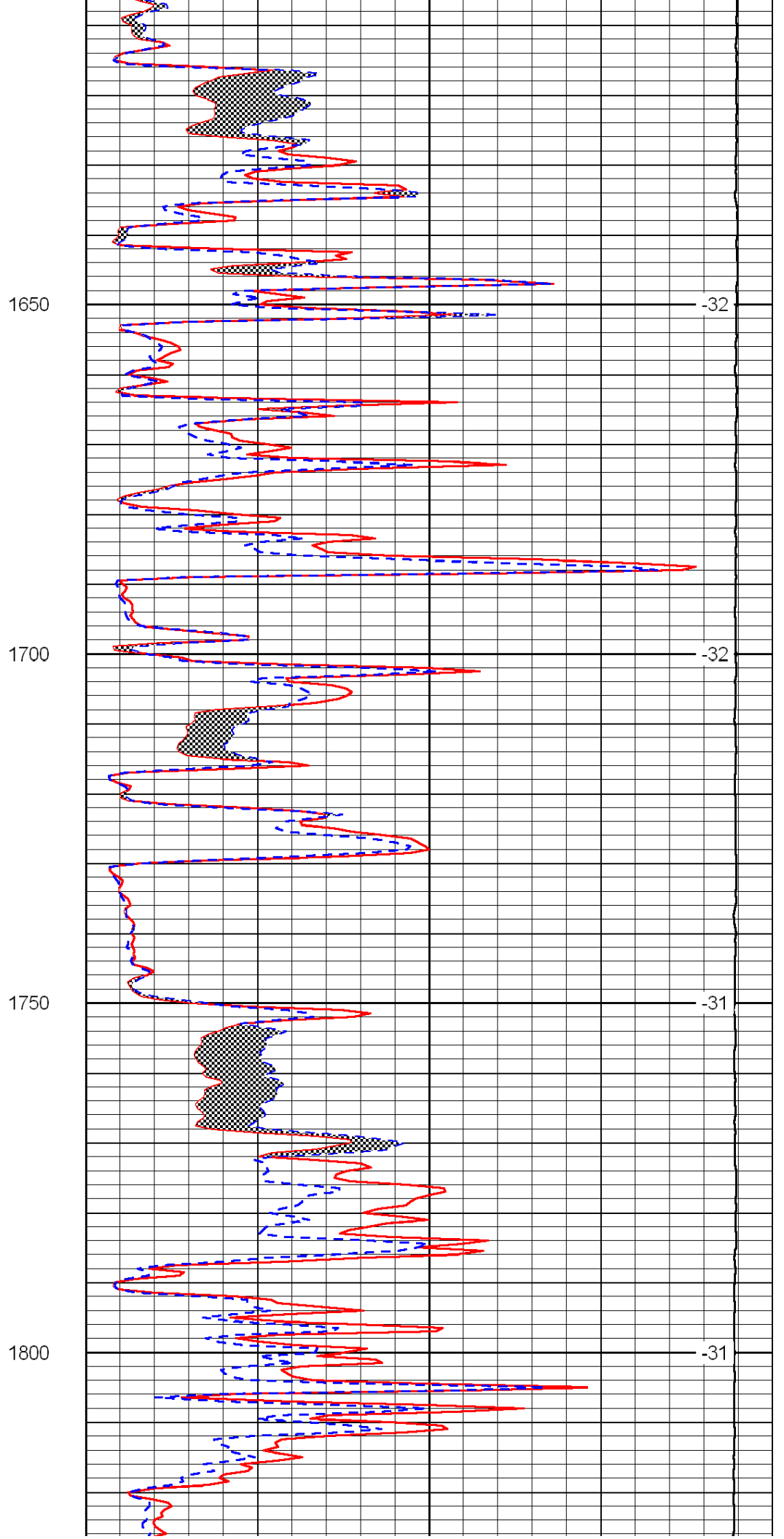
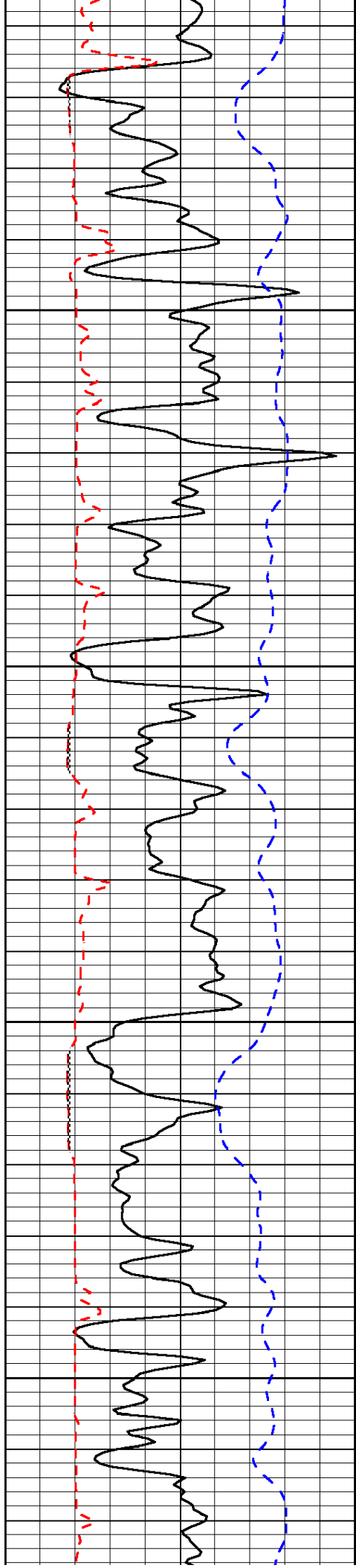
0	Gamma Ray	150
6	Micro Log Caliper (in)	16
-200	SP (MV)	0

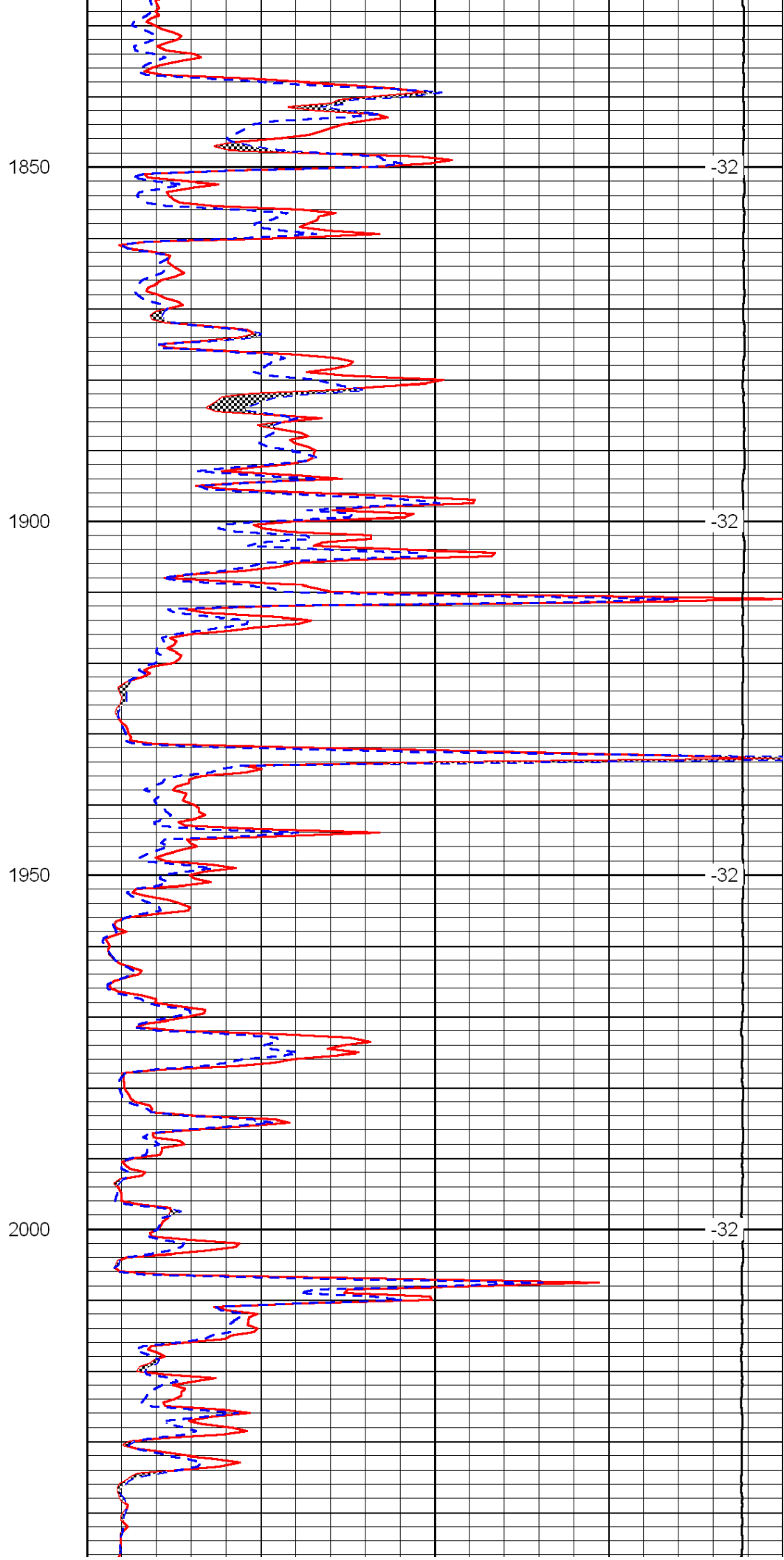
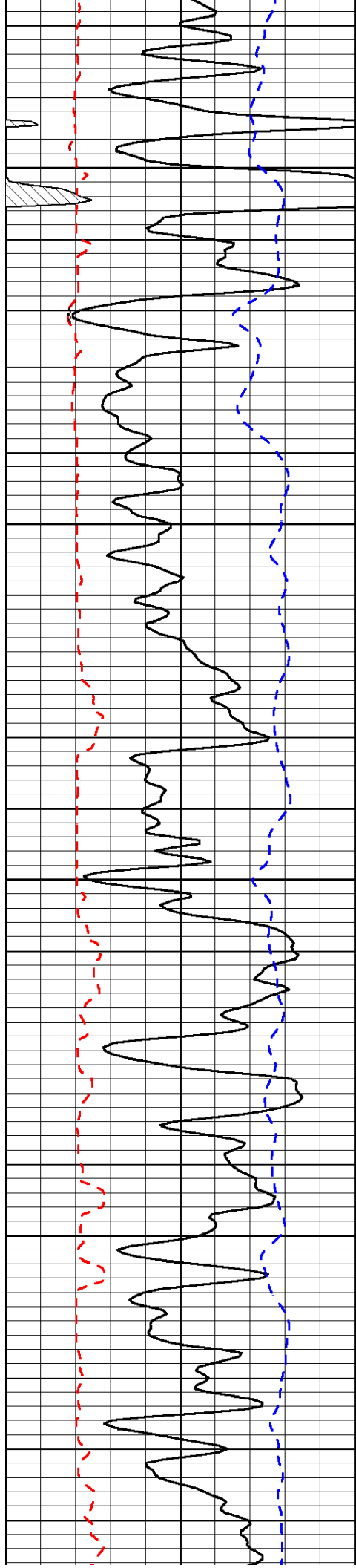
0	Micro Inverse 1 X 1 (Ohm-m)	40
0	Micro Normal 2" (Ohm-m)	40
15000	Line Weight (lb)	0

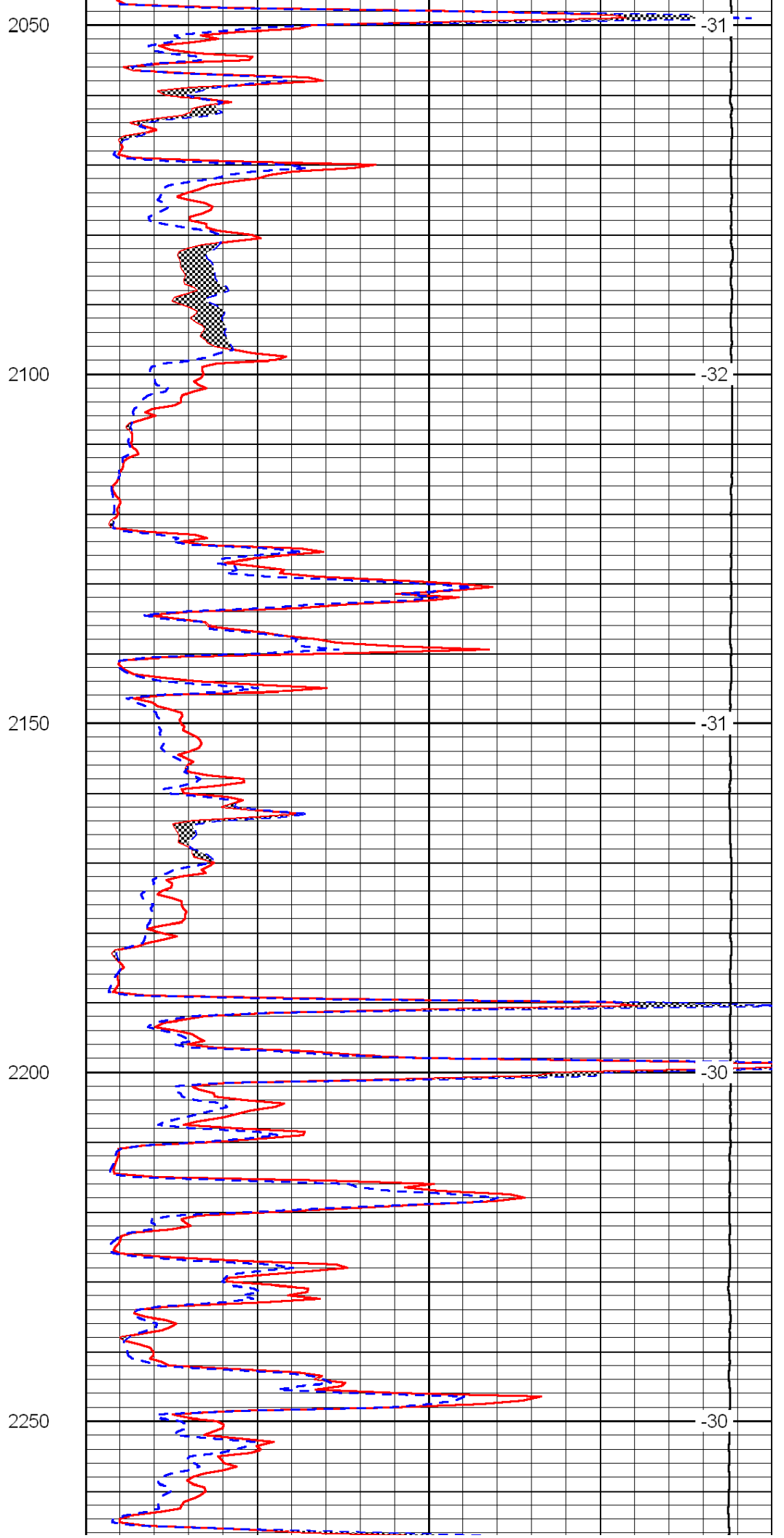
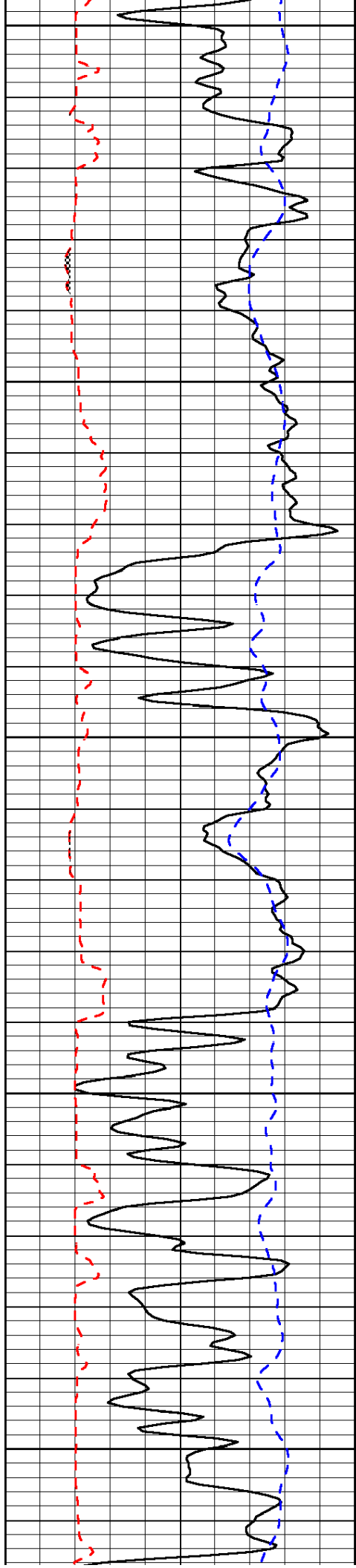
LSPD  
(ft/min)



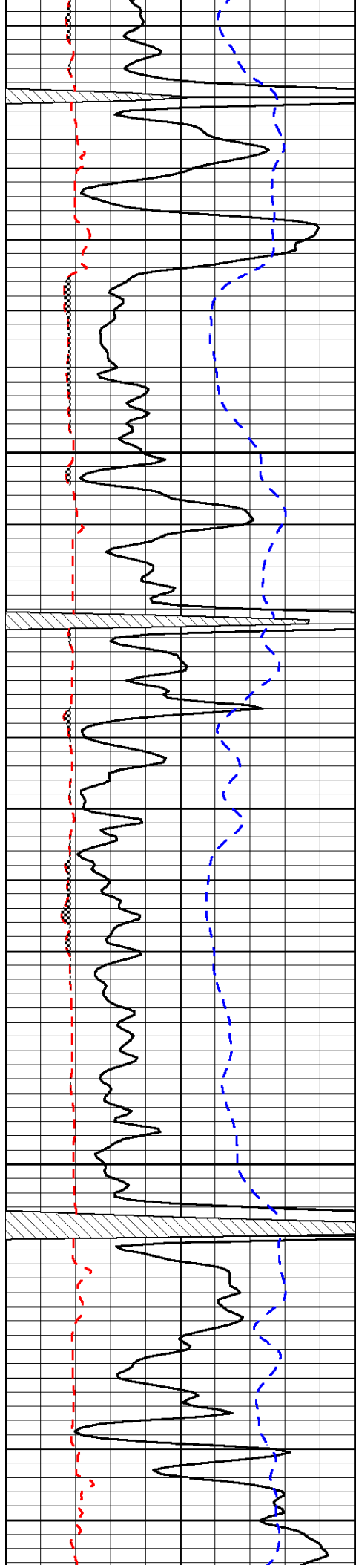












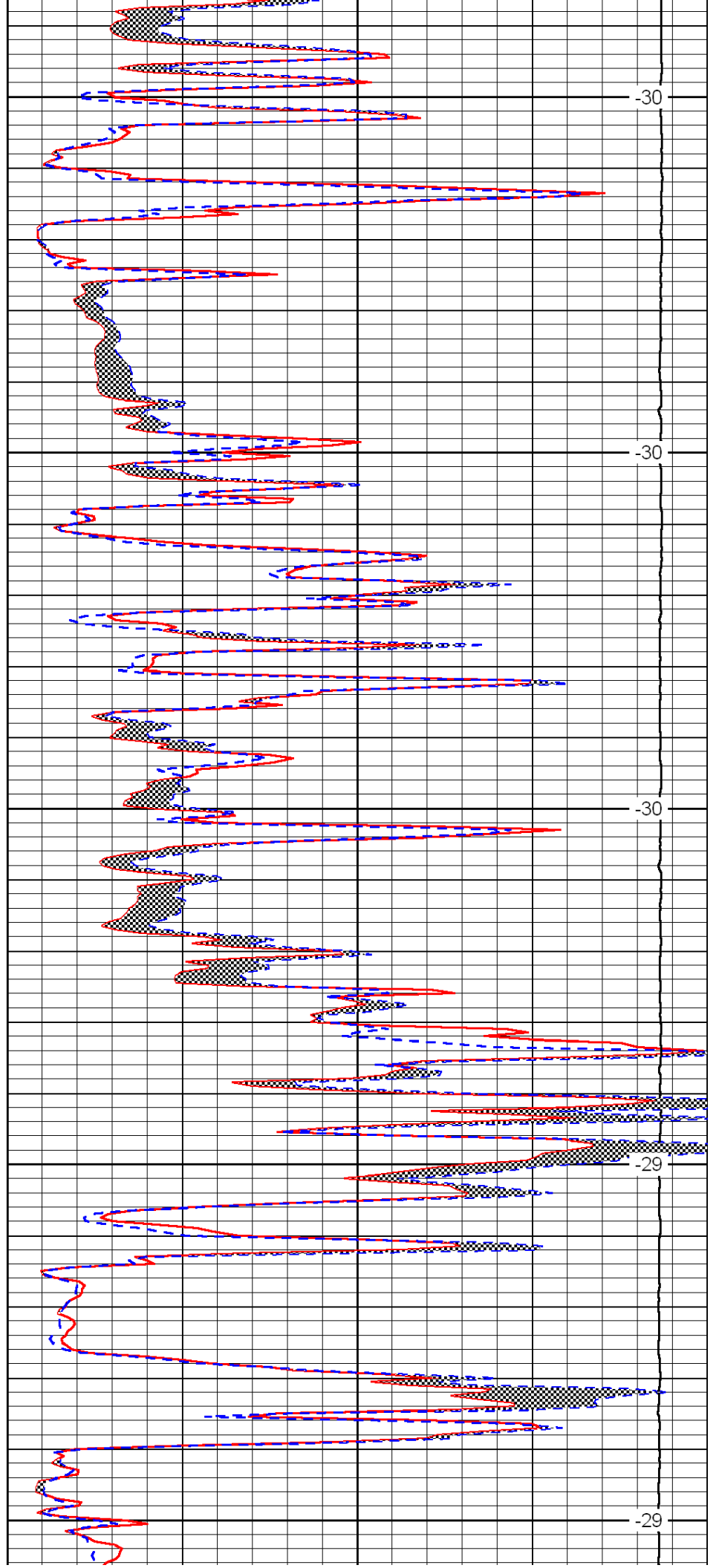
2500

2550

2600

2650

2700



-30

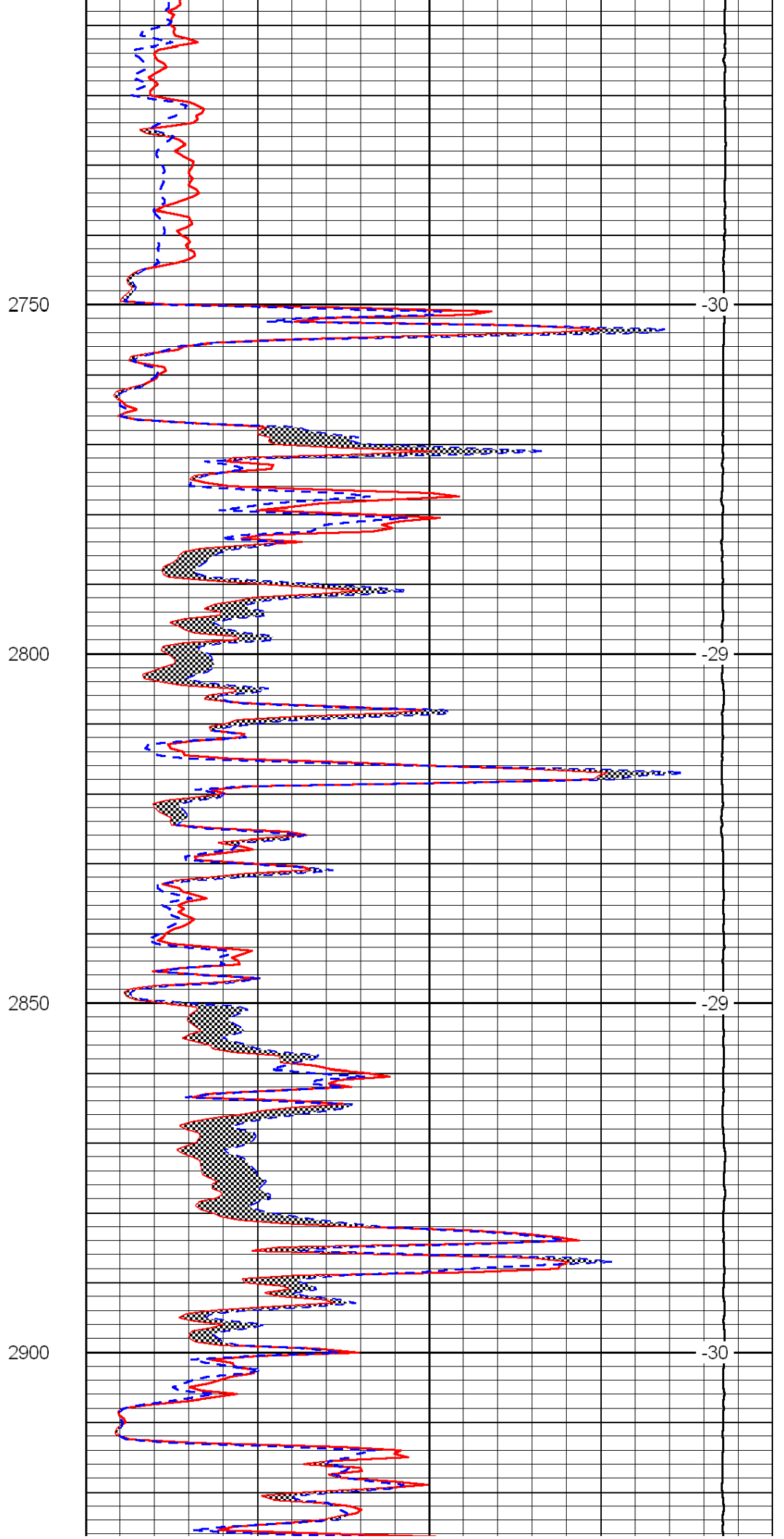
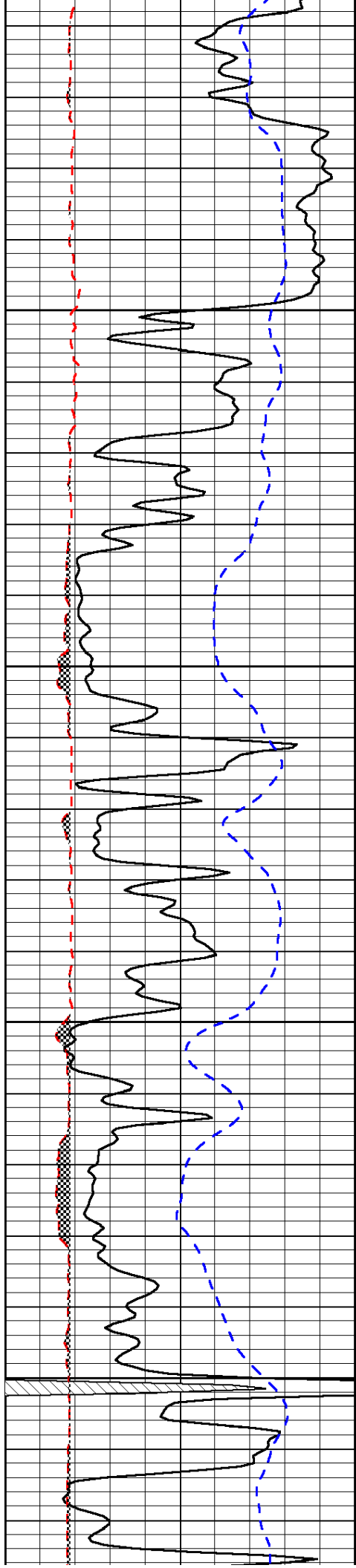
-30

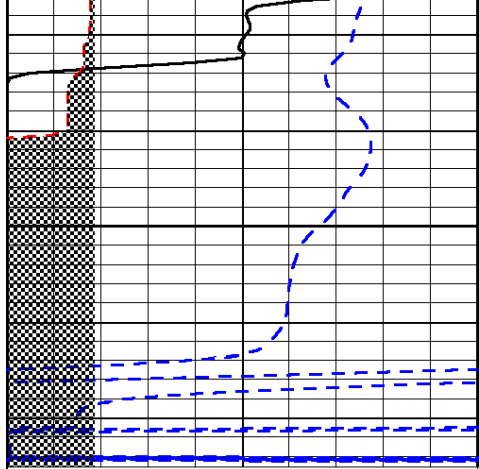
-30

-29

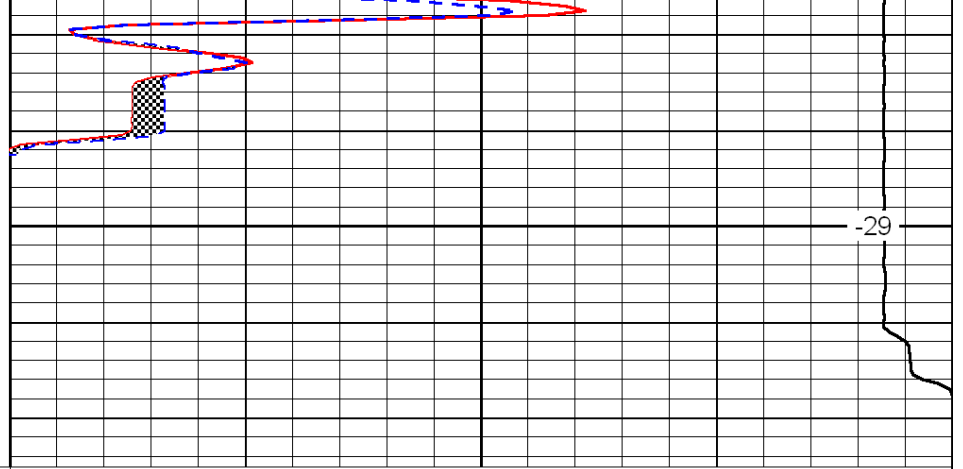
-29







2950



-29

0	Gamma Ray	150
6	Micro Log Caliper (in)	16
-200	SP (MV)	0

0	Micro Inverse 1 X 1 (Ohm-m)	40
0	Micro Normal 2' (Ohm-m)	40
15000	Line Weight (lb)	0

LSPD  
(ft/min)