



# Microresistivity Log

DIGITAL LOG (785) 625-3858

API No.	15-065-23,607-00-00	
Company	H & C Oil Operating Inc.	
Well	Campbell # 18-1	
Field	Wildcat	
County	Graham	State
		Kansas
Location	2200' FSL & 1650' FEL	
Sec: 18	Twp: 6 S	Rge: 23 W
Permanent Datum	Ground Level	Elevation 2419
Log Measured From	Kelly Bushing	5 Ft. Above Perm. Datum
Drilling Measured From	Kelly Bushing	
		Other Services CNL/CDL DIL/BHCS
		Elevation K.B. 2424 D.F. 2419 G.L. 2419

Date	01/19/2010
Run Number	Two
Depth Driller	3905
Depth Logger	3903
Bottom Logged Interval	3902
Top Log Interval	3250
Casing Driller	8.625 @ 253
Casing Logger	261
Bit Size	7.875
Type Fluid in Hole	Chemical
Salinity, ppm CL	1,000
Density / Viscosity	9.0 67
pH / Fluid Loss	11.0 7.6
Source of Sample	Flowline
Rm @ Meas. Temp	1.2 @ 62
Rmf @ Meas. Temp	0.9 @ 62
Rmc @ Meas. Temp	1.6 @ 62
Source of Rmf / Rmc	Charts
Rm @ BHT	.64 @ 117
Operating Rig Time	4 Hours
Max Rec. Temp. F	117
Equipment Number	10
Location	Hays
Recorded By	J. Wellbrock
Witnessed By	M Downing

<<< Fold Here >>>

All interpretations are opinions based on inferences from electrical or other measurements and we cannot and do not guarantee the accuracy or correctness of any interpretation, and we shall not, except in the case of gross or willful negligence on our part, be liable or responsible for any loss, costs, damages, or expenses incurred or sustained by anyone resulting from any interpretation made by any of our officers, agents or employees. These interpretations are also subject to our general terms and conditions set out in our current Price Schedule.

Comments

Thank you for using Log-Tech, Inc.  
(785) 625-3858

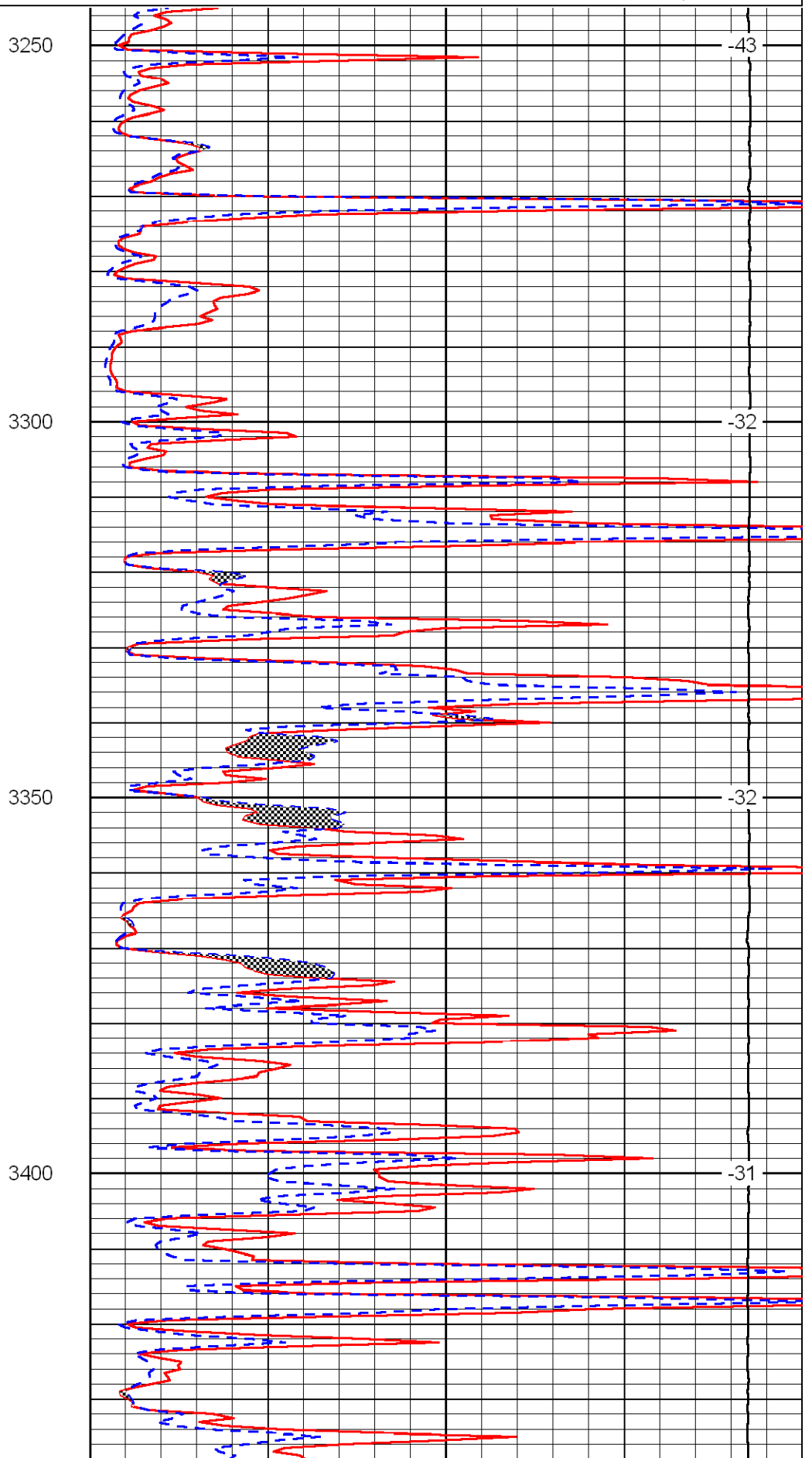
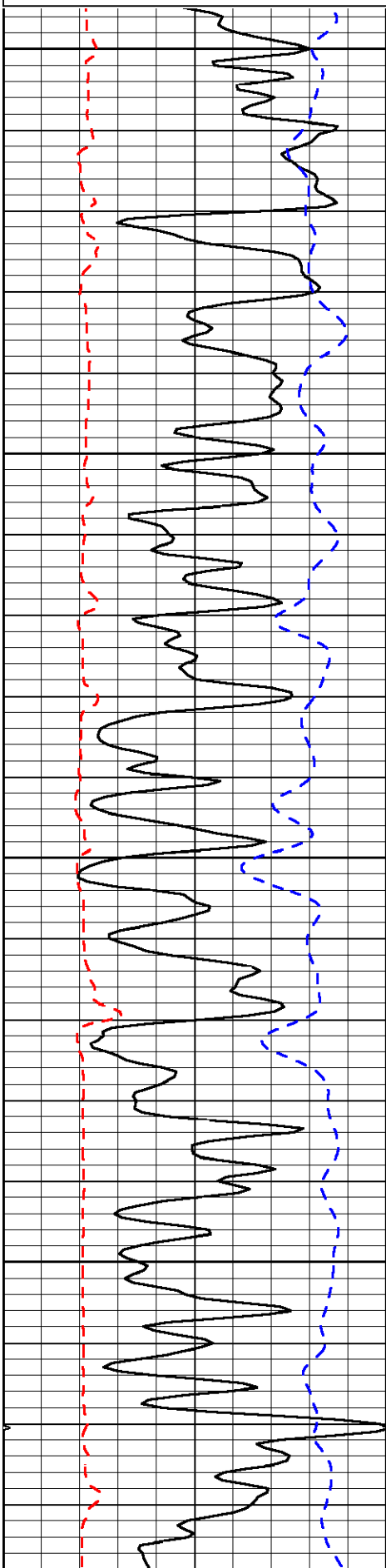
Hill City Stop Light, North 12 to CC Road, West to 230, South 1/2 West Into

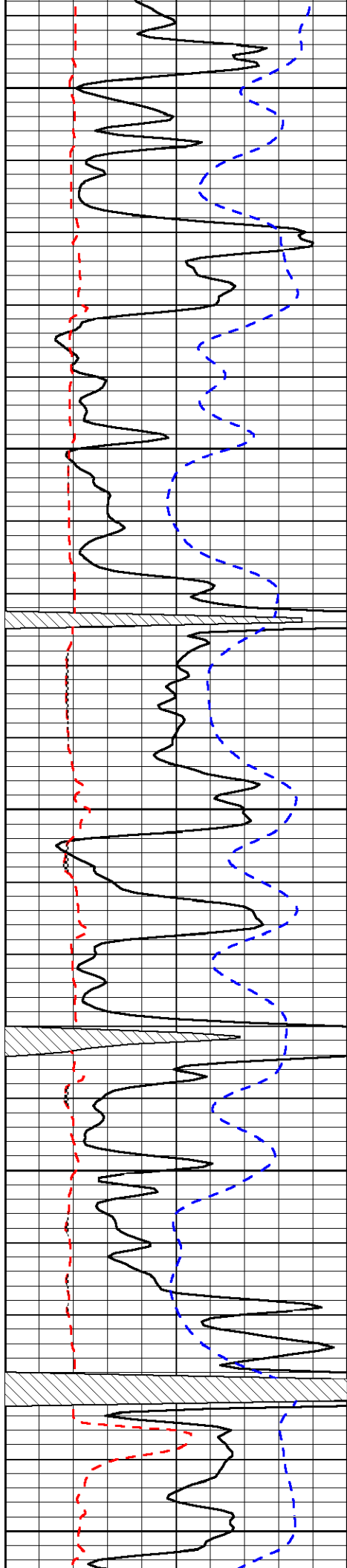
Database File: c:\warrior\data\h&c\_campbell # 18-1\h&chd.db  
 Dataset Pathname: dil/handc2in  
 Presentation Format: micro  
 Dataset Creation: Tue Jan 19 09:31:32 2010  
 Charted by: Depth in Feet scaled 1:240

0	Gamma Ray	150
6	Micro Log Caliper (in)	16
-200	SP (MV)	0

0	Micro Inverse 1 X 1 (Ohm-m)	40
0	Micro Normal 2" (Ohm-m)	40
15000	Line Weight (lb)	0

LSPD  
(ft/min)





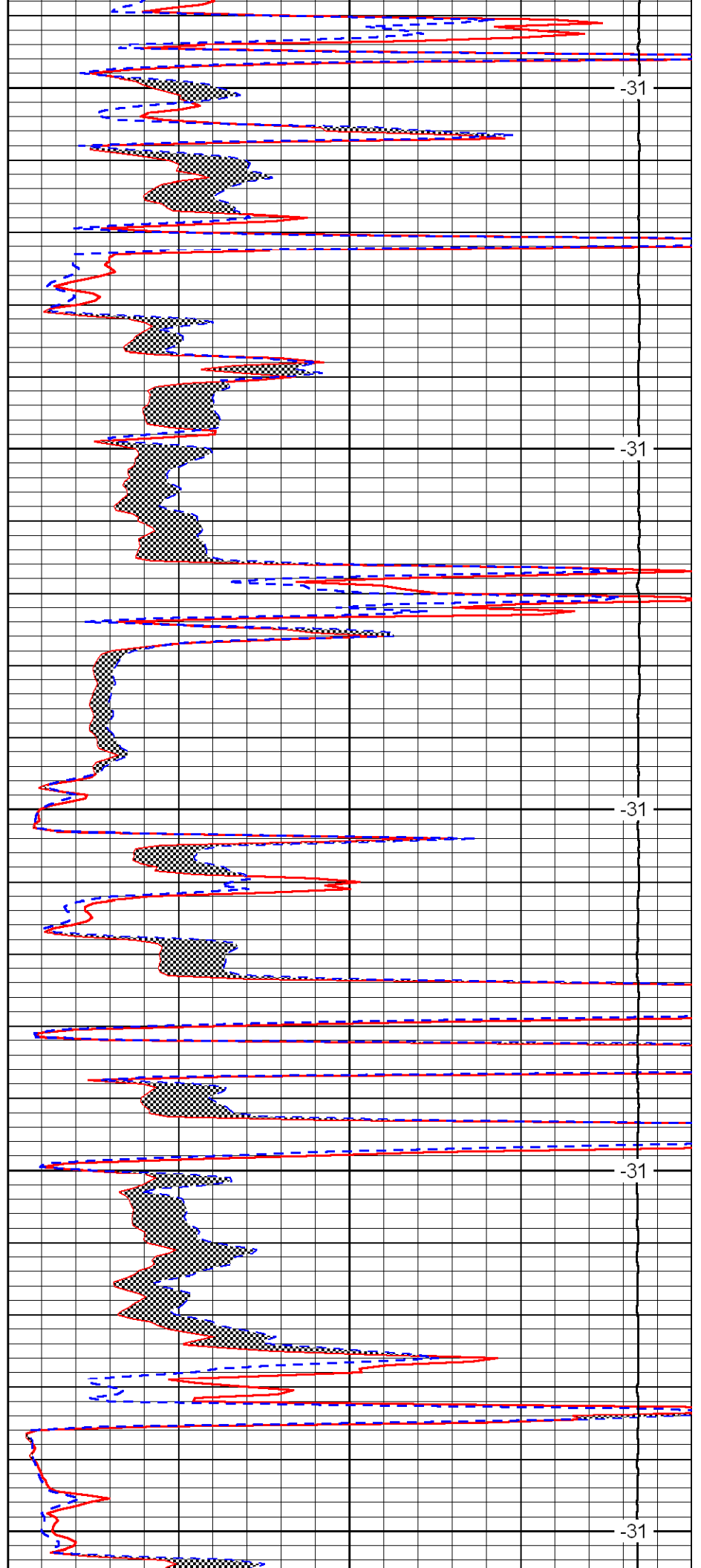
3450

3500

3550

3600

3650



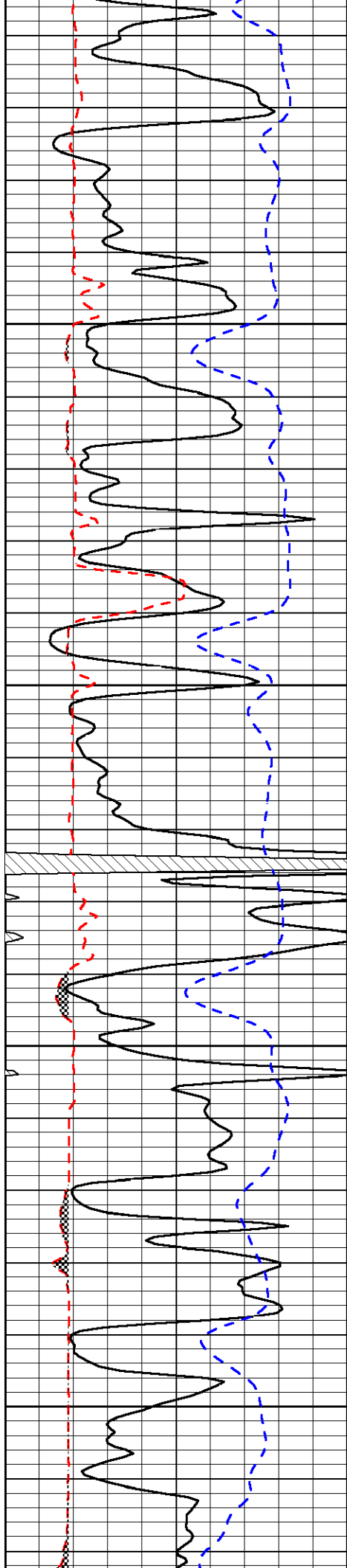
-31

-31

-31

-31

-31

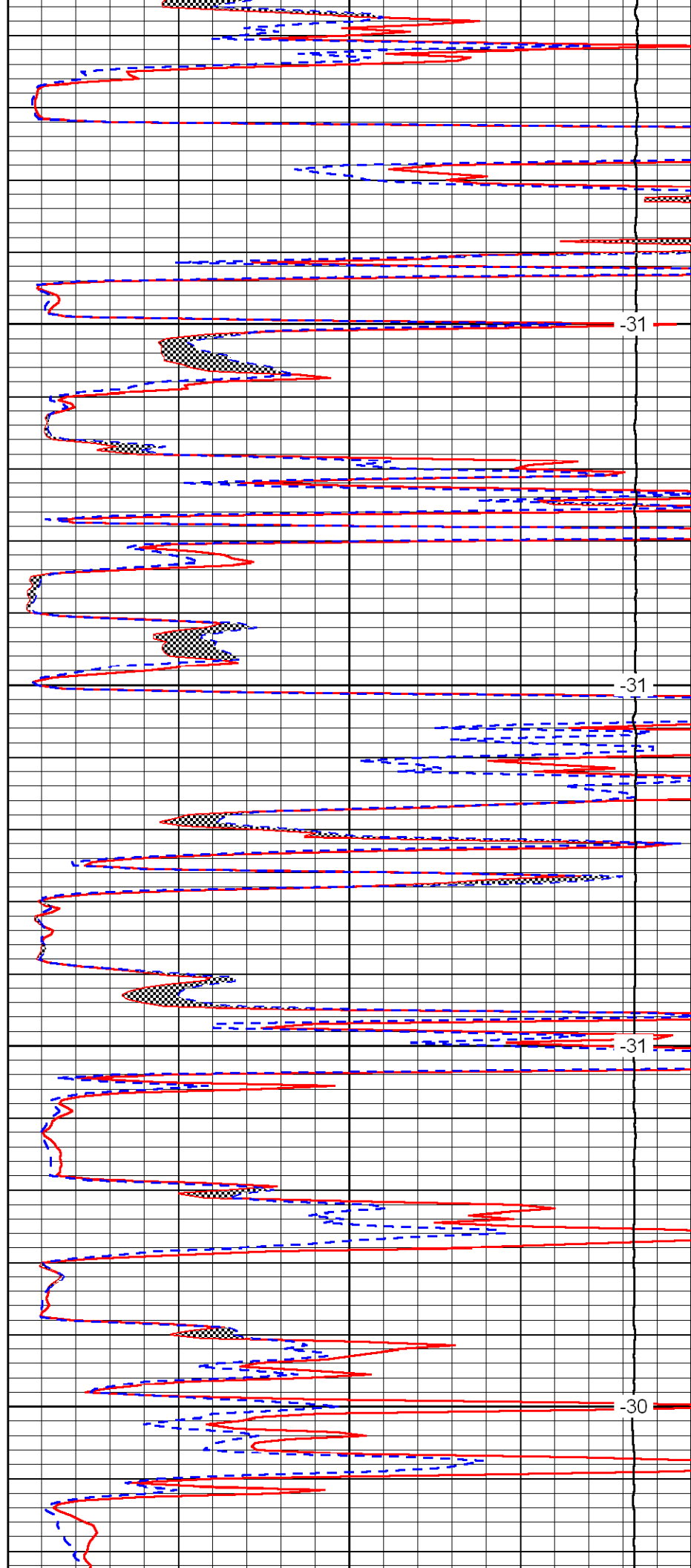


3700

3750

3800

3850

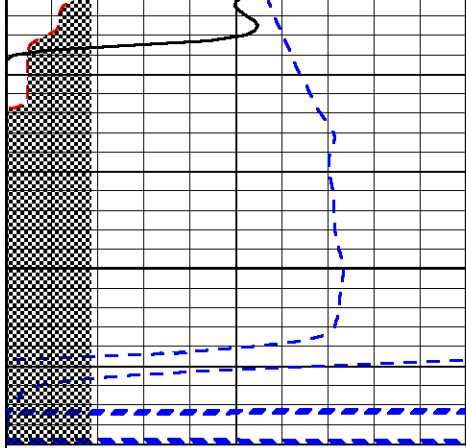


-31

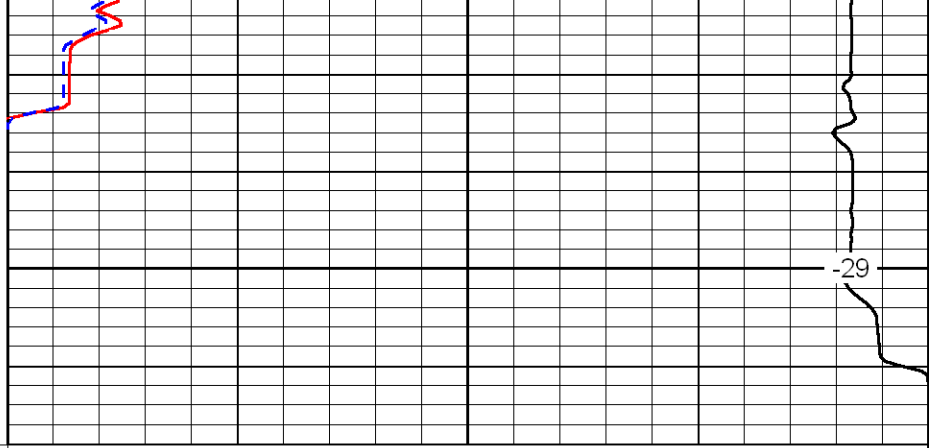
-31

-31

-30



3900



0	Gamma Ray	150
6	Micro Log Caliper (in)	16
-200	SP (MV)	0

0	Micro Inverse 1 X 1 (Ohm-m)	40
0	Micro Normal 2'' (Ohm-m)	40
15000	Line Weight (lb)	0

LSPD  
(ft/min)