



Dual Compensated  
Porosity Log

DIGITAL LOG (785) 625-3858

API No. 15-065-23,607-00-00

Company H & C Oil Operating Inc.  
Well Campbell # 18-1  
Field Wildcat  
County Graham  
State Kansas

Location 2200' FSL & 1650' FEL

Sec: 18 Twp: 6 S Rge: 23 W

Other Services  
DIL  
MEL/BHCS

Permanent Datum Ground Level Elevation 2419  
Log Measured From Kelly Bushing 5 Ft. Above Perm. Datum  
Drilling Measured From Kelly Bushing

K.B. 2424  
D.F. 2419  
G.L. 2419

Date 01/19/2010

Run Number One

Type Log CNL / CDL

Depth Driller 3905

Depth Logger 3903

Bottom Logged Interval 3882

Top Logged Interval 3250

Type Fluid In Hole Chemical

Salinity, PPM CL 1,000

Density 9.0

Level Full

Max. Rec. Temp. F 117

Operating Rig Time 4 Hours

Equipment -- Location 10 Hays

Recorded By J. Wellbrock

Witnessed By M Downing

Run No	Bit	Borehole Record		Casing Record	
		From	To	From	To
1	12.25	00	253	8.625	24#
2	7.875	253	3905		

<<< Fold Here >>>

All interpretations are opinions based on inferences from electrical or other measurements and we cannot and do not guarantee the accuracy or correctness of any interpretation, and we shall not, except in the case of gross or willful negligence on our part, be liable or responsible for any loss, costs, damages, or expenses incurred or sustained by anyone resulting from any interpretation made by any of our officers, agents or employees. These interpretations are also subject to our general terms and conditions set out in our current Price Schedule.

Comments

Thank you for using Log-Tech, Inc.  
(785) 625-3858

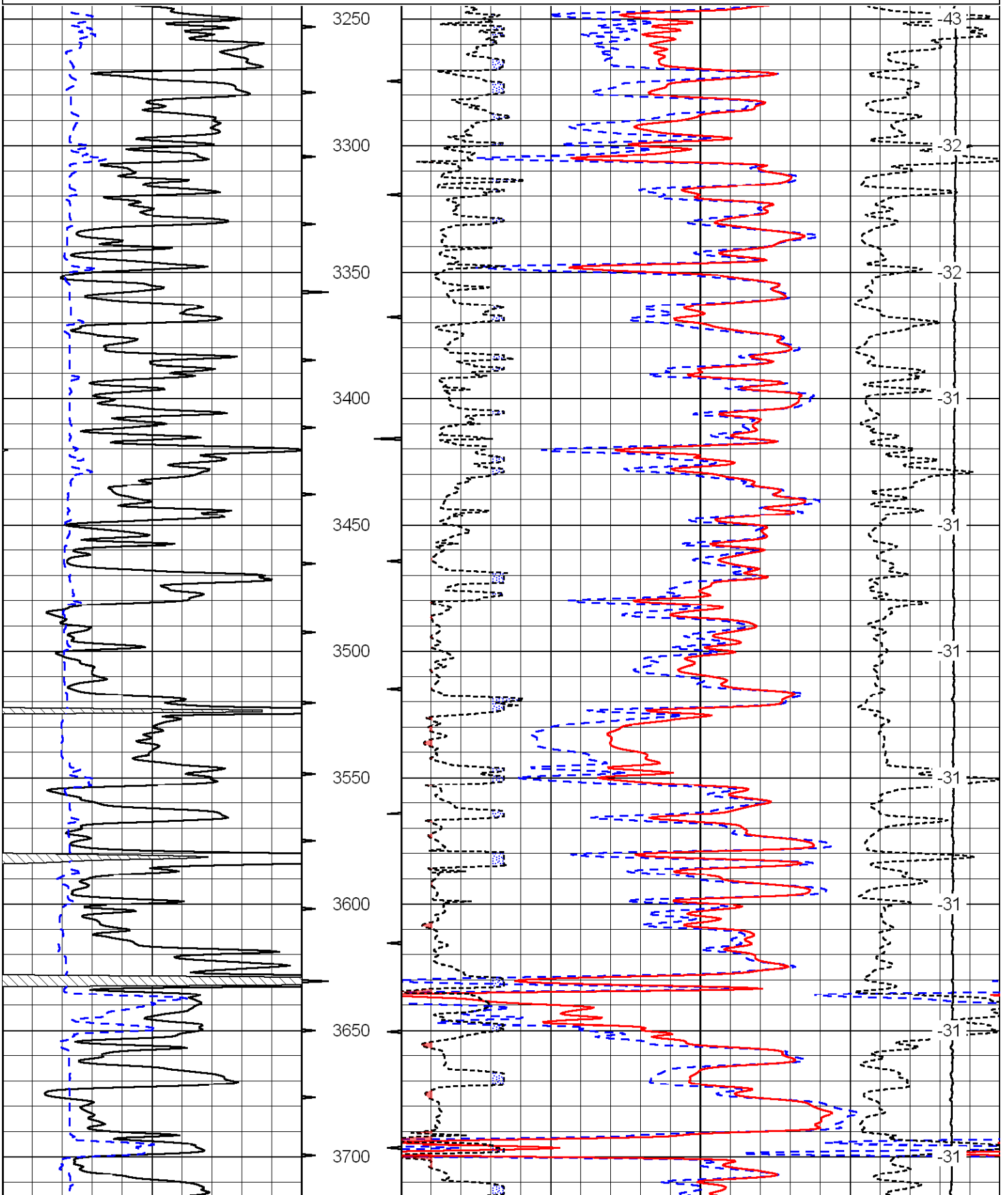
Hill City Stop Light, North 12 to CC Road, West to 230, South 1/2 West Into

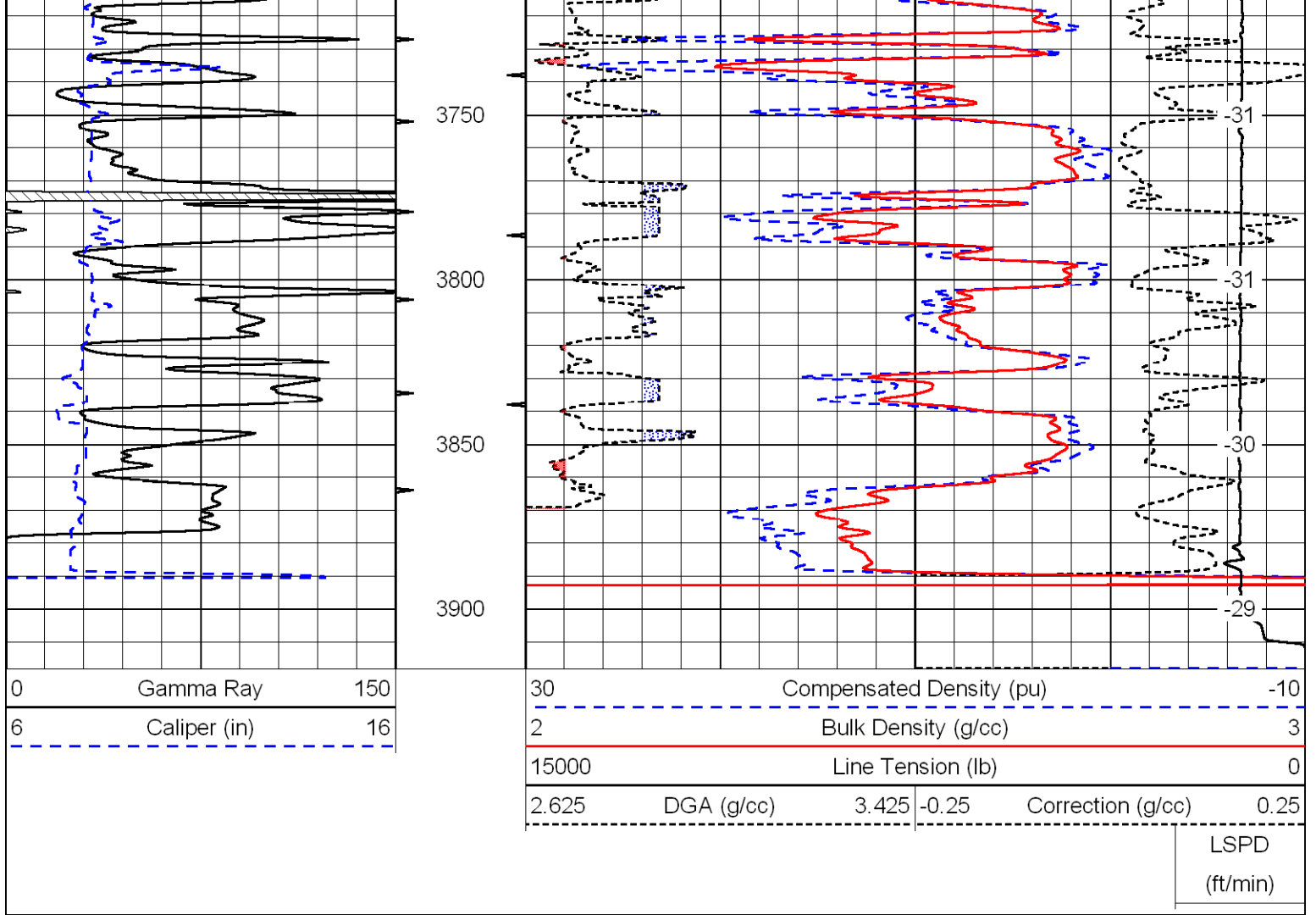
Database File: c:\warrior\data\h&c\_campbell # 18-1\h&chd.db  
 Dataset Pathname: dil\handc2in  
 Presentation Format: cdl  
 Dataset Creation: Tue Jan 19 09:31:32 2010  
 Charted by: Depth in Feet scaled 1:600

0	Gamma Ray	150
6	Caliper (in)	16

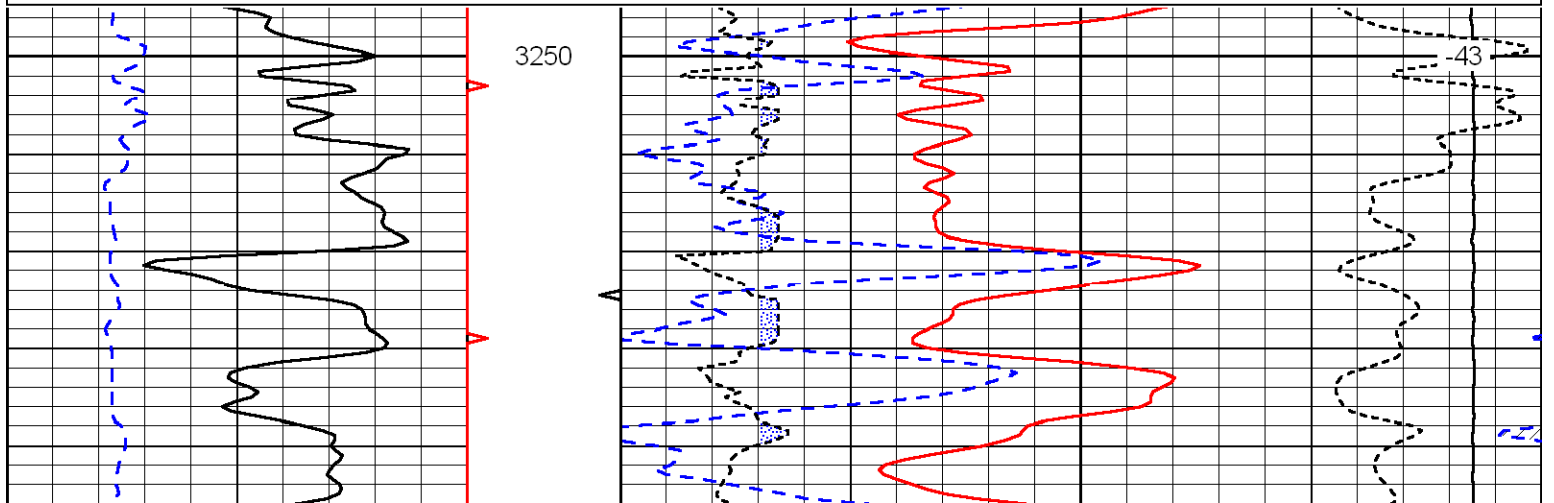
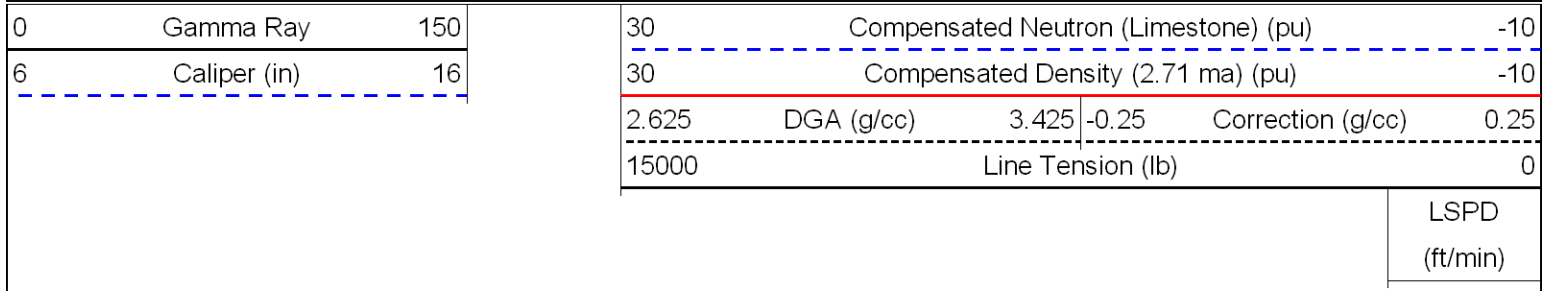
30	Compensated Density (pu)			-10	
2	Bulk Density (g/cc)			3	
15000	Line Tension (lb)			0	
2.625	DGA (g/cc)	3.425	-0.25	Correction (g/cc)	0.25

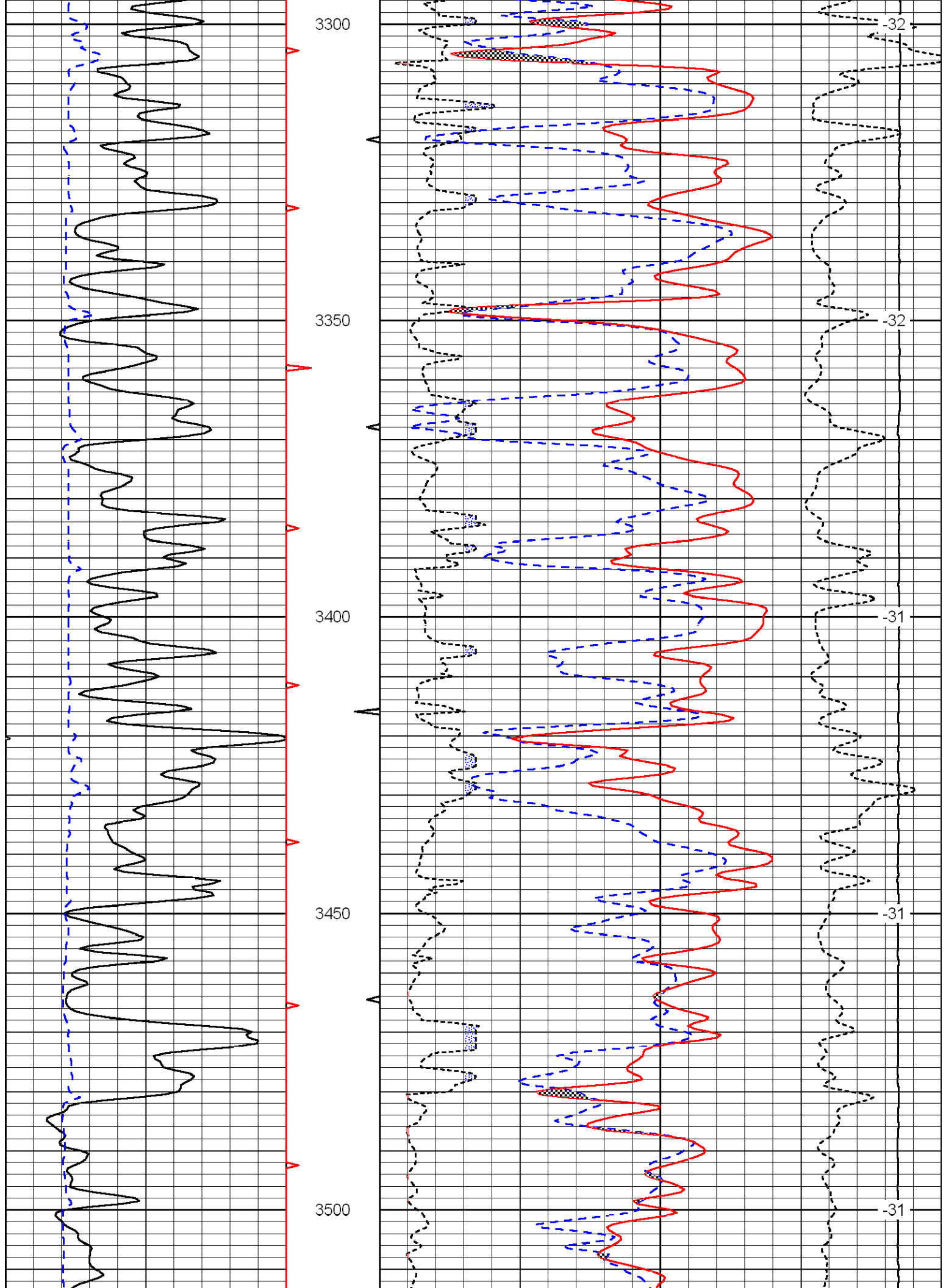
LSPD  
(ft/min)

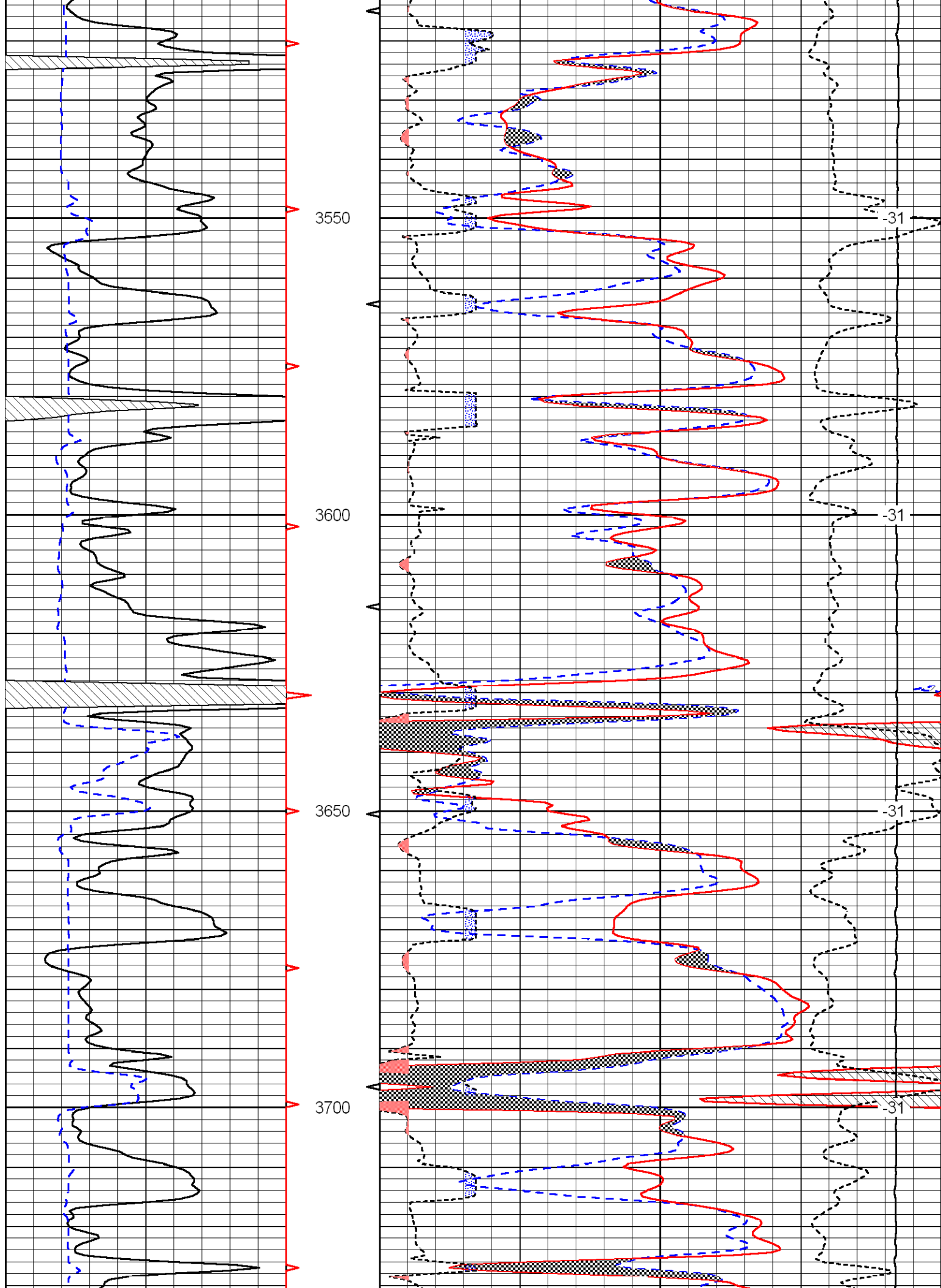


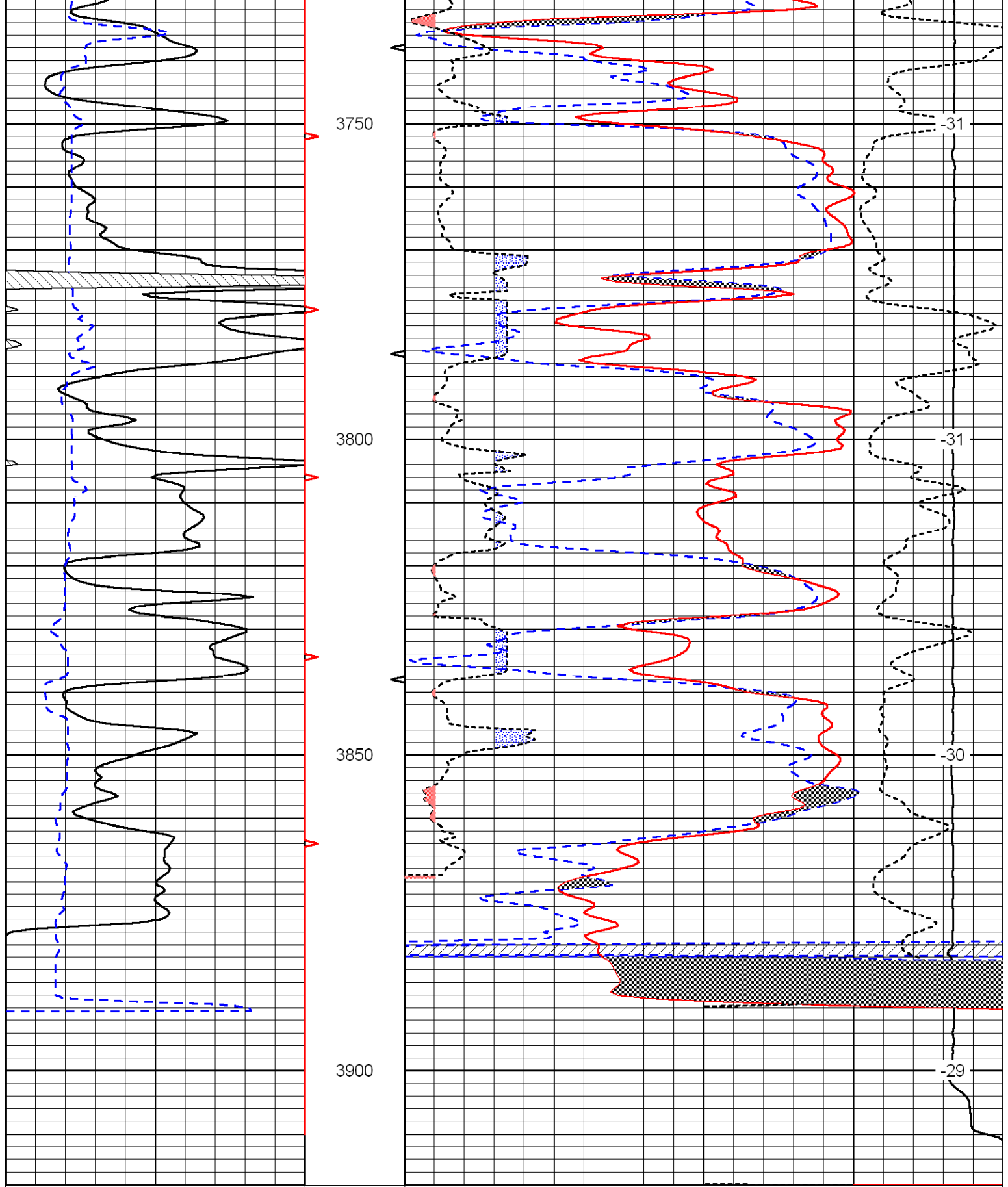


Database File: c:\warrior\data\h&c\_campbell # 18-1\h&c\_hcd.db  
 Dataset Pathname: dil/handc2in  
 Presentation Format: cndlspec  
 Dataset Creation: Tue Jan 19 09:31:32 2010  
 Charted by: Depth in Feet scaled 1:240









0	Gamma Ray	150	30	Compensated Neutron (Limestone) (pu)	-10
6	Caliper (in)	16	30	Compensated Density (2.71 ma) (pu)	-10
2.625	DGA (g/cc)	3.425	-0.25	Correction (g/cc)	0.25
15000	Line Tension (lb)				0

LSPD  
(ft/min)

