



# Dual Induction Log

DIGITAL LOG (785) 625-3858

API No.	15-065-23,607-00-00		
Company	H & C Oil Operating Inc.		
Well	Campbell # 18-1		
Field	Wildcat		
County	Graham	State	Kansas
Location	2200' FSL & 1650' FEL		
Sec: 18	Twp: 6 S	Rge: 23 W	
Permanent Datum	Ground Level	Elevation 2419	Other Services CNL/CDL MEL/BHCS
Log Measured From	Kelly Bushing	5 Ft. Above Perm. Datum	K.B. 2424
Drilling Measured From	Frothkelly Bushing		D.F. 2419

Date	01/19/2010
Run Number	One
Depth Driller	3905
Depth Logger	3903
Bottom Logged Interval	3902
Top Log Interval	250
Casing Driller	8.625 @ 253
Casing Logger	261
Bit Size	7.875
Type Fluid in Hole	Chemical
Salinity, ppm CL	1,000
Density / Viscosity	9.0 67
pH / Fluid Loss	11.0 7.6
Source of Sample	Flowline
Rm @ Meas. Temp	1.2 @ 62
Rmf @ Meas. Temp	0.9 @ 62
Rmc @ Meas. Temp	1.6 @ 62
Source of Rmf / Rmc	Charts
Rm @ BHT	.64 @ 117
Operating Rig Time	4 Hours
Max Rec. Temp. F	117
Equipment Number	10
Location	Hays
Recorded By	J. Wellbrock
Witnessed By	M Downing

<<< Fold Here >>>

All interpretations are opinions based on inferences from electrical or other measurements and we cannot and do not guarantee the accuracy or correctness of any interpretation, and we shall not, except in the case of gross or willful negligence on our part, be liable or responsible for any loss, costs, damages, or expenses incurred or sustained by anyone resulting from any interpretation made by any of our officers, agents or employees. These interpretations are also subject to our general terms and conditions set out in our current Price Schedule.

### Comments

Thank you for using Log-Tech, Inc.  
(785) 625-3858

Hill City Stop Light, North 12 to CC Road, West to 230, South 1/2 West Into

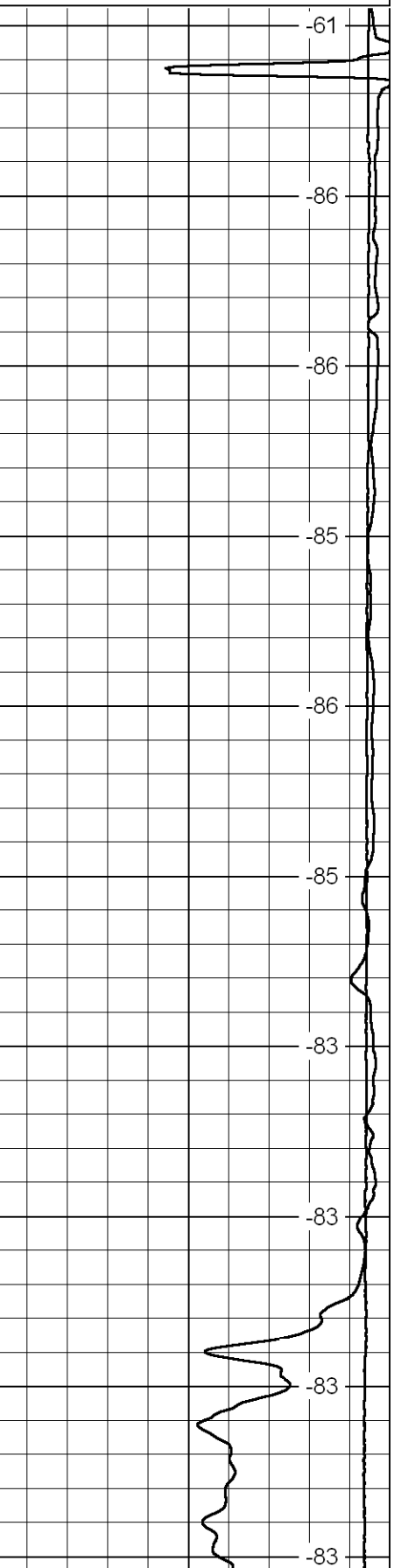
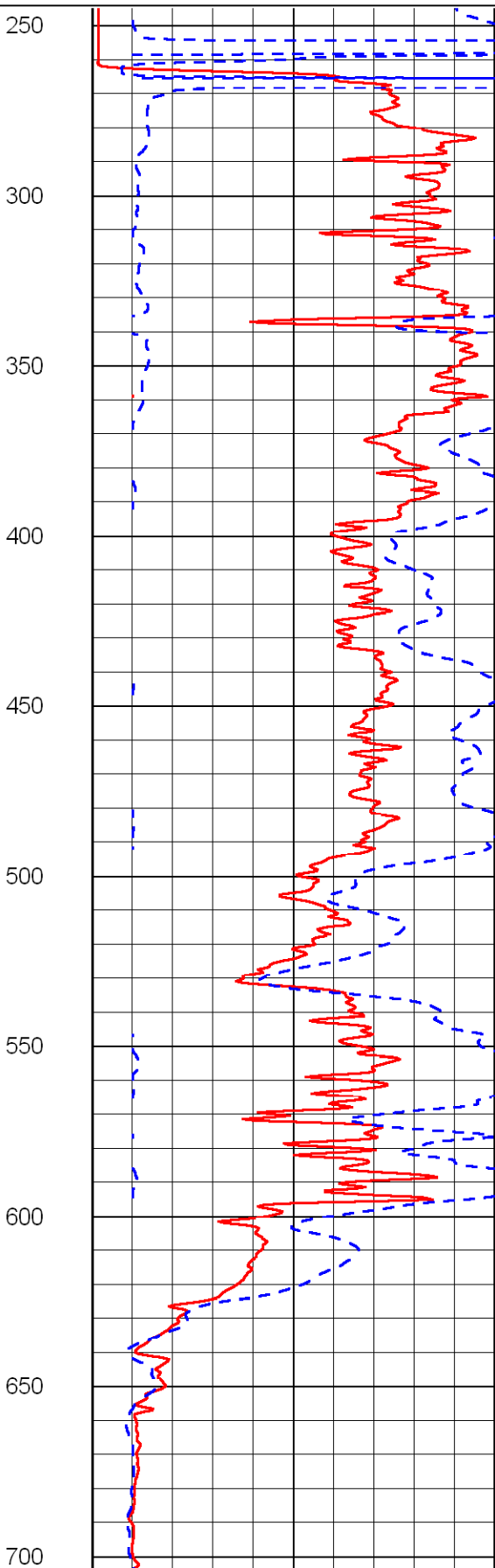
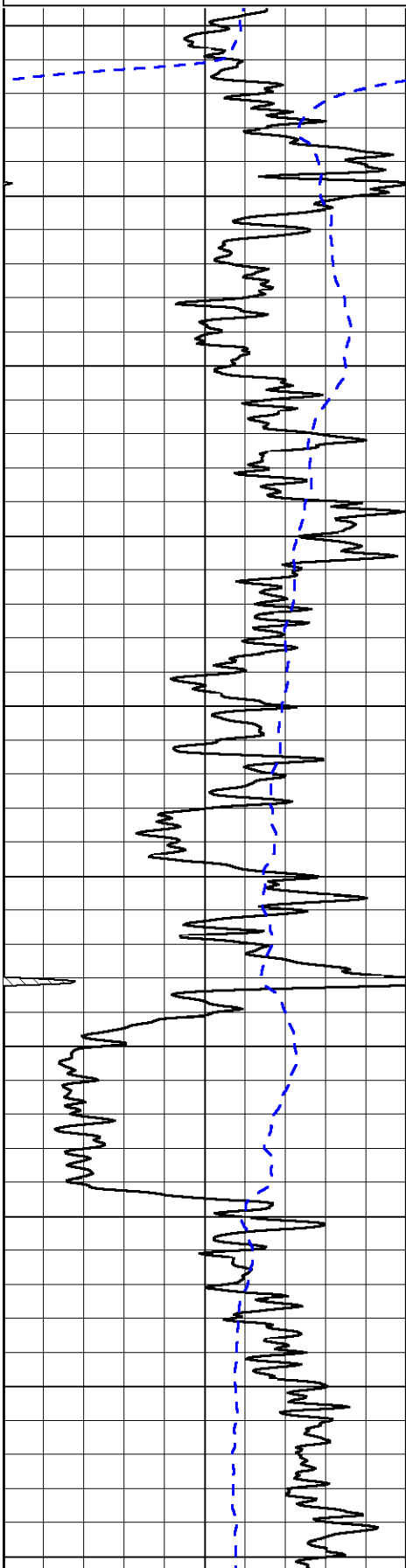
Database File: c:\warrior\data\h&c\_campbell # 18-1\h&chd.db  
 Dataset Pathname: dil/handc2in  
 Presentation Format: dil2in  
 Dataset Creation: Tue Jan 19 09:31:32 2010  
 Charted by: Depth in Feet scaled 1:600

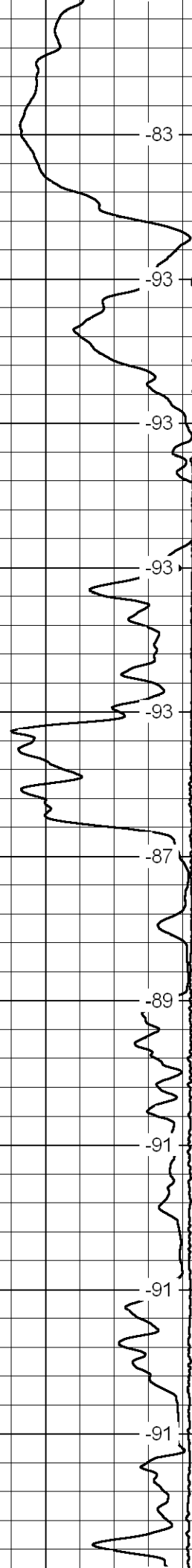
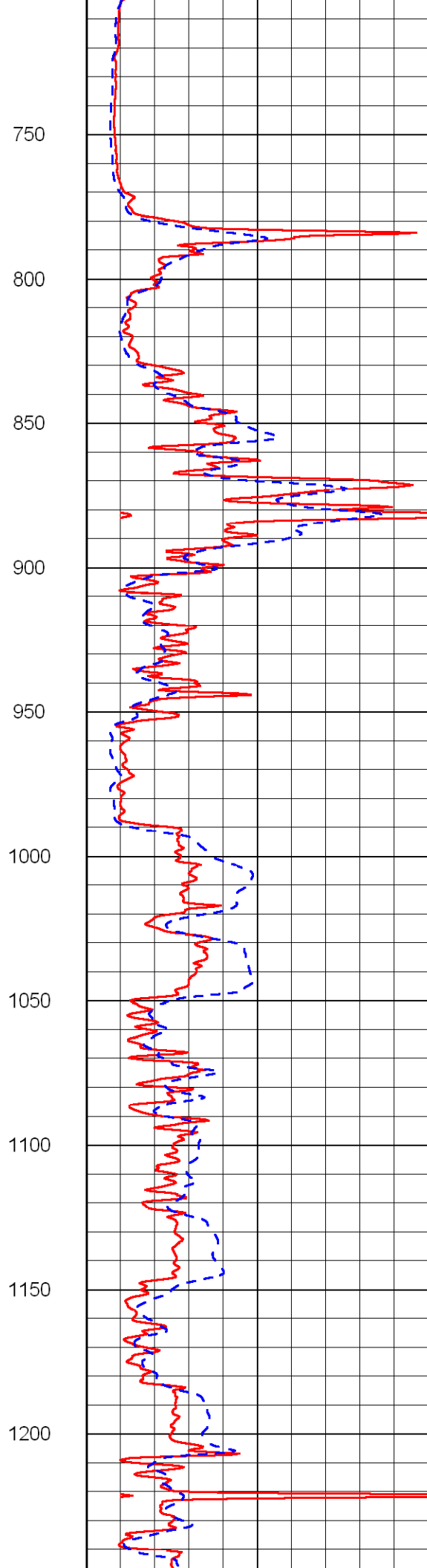
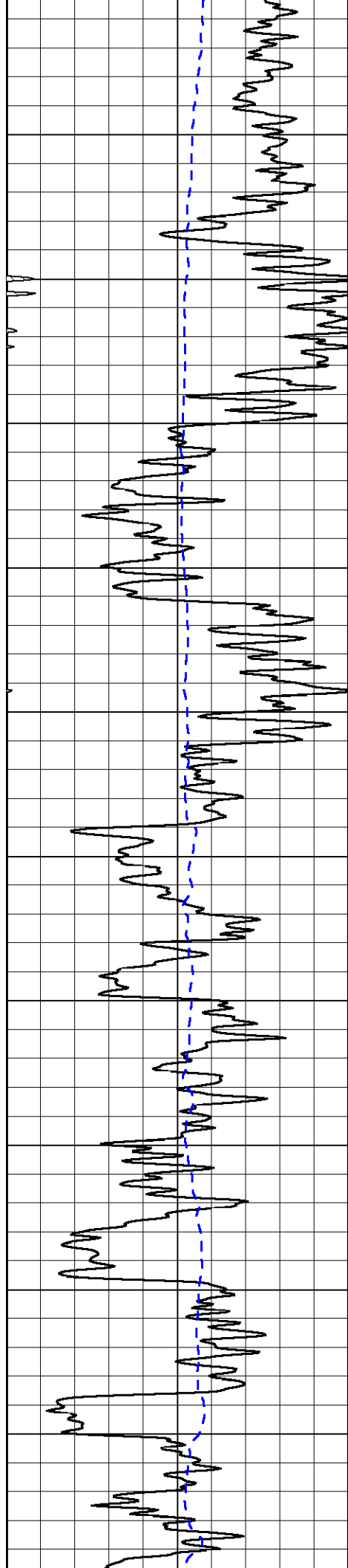
0 Gamma Ray 150  
-200 SP (MV) 0

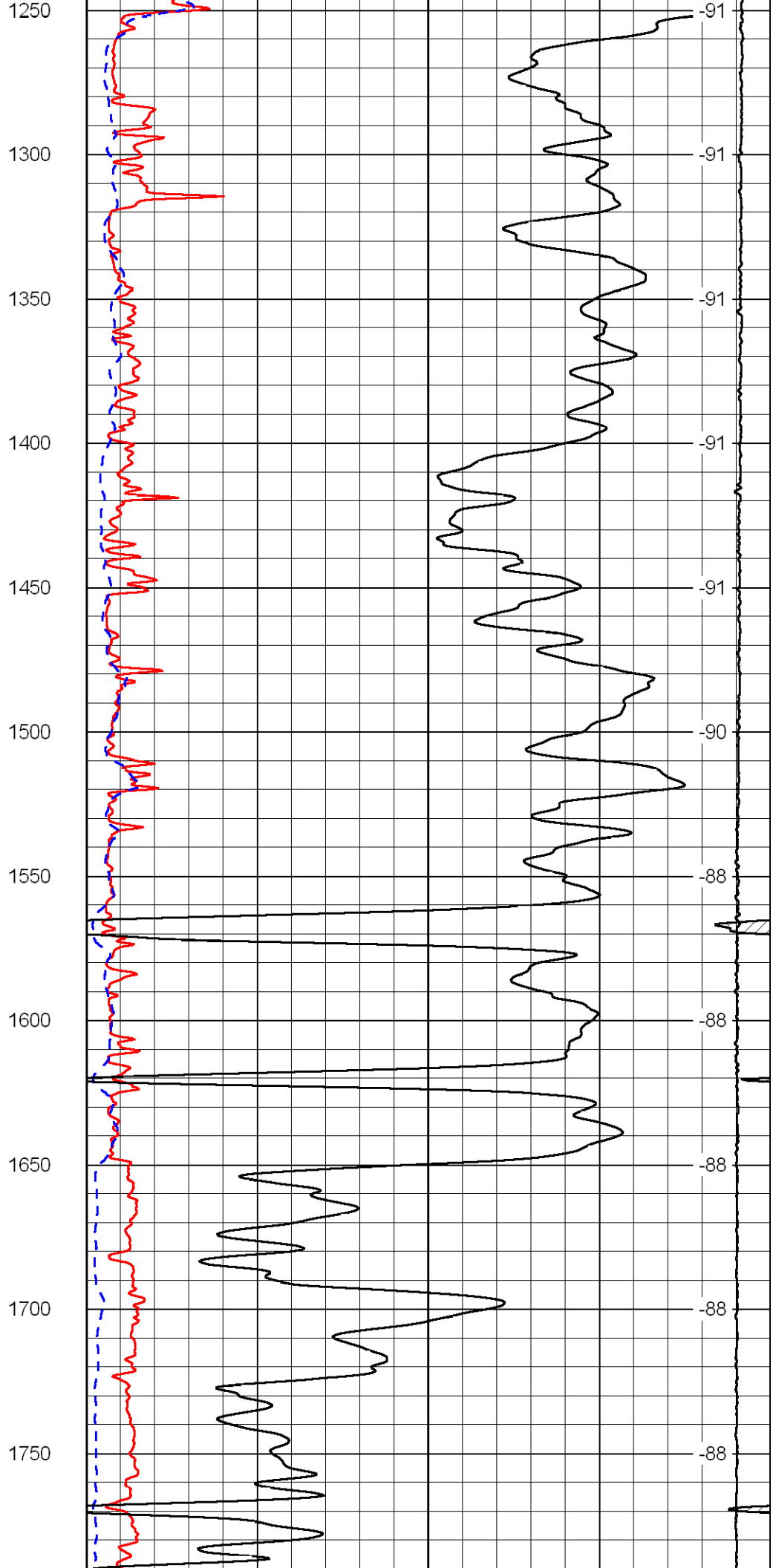
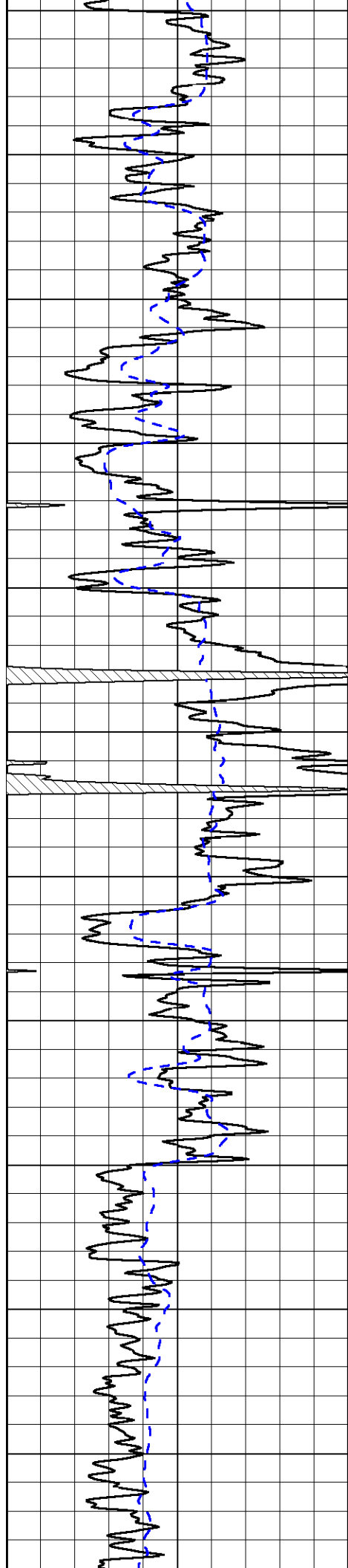
0 Shallow Resistivity (Ohm-m) 50  
0 Deep Resistivity (Ohm-m) 50  
1000 Conductivity (mmho/m) 0  
15000 Line Tension (lb) 0

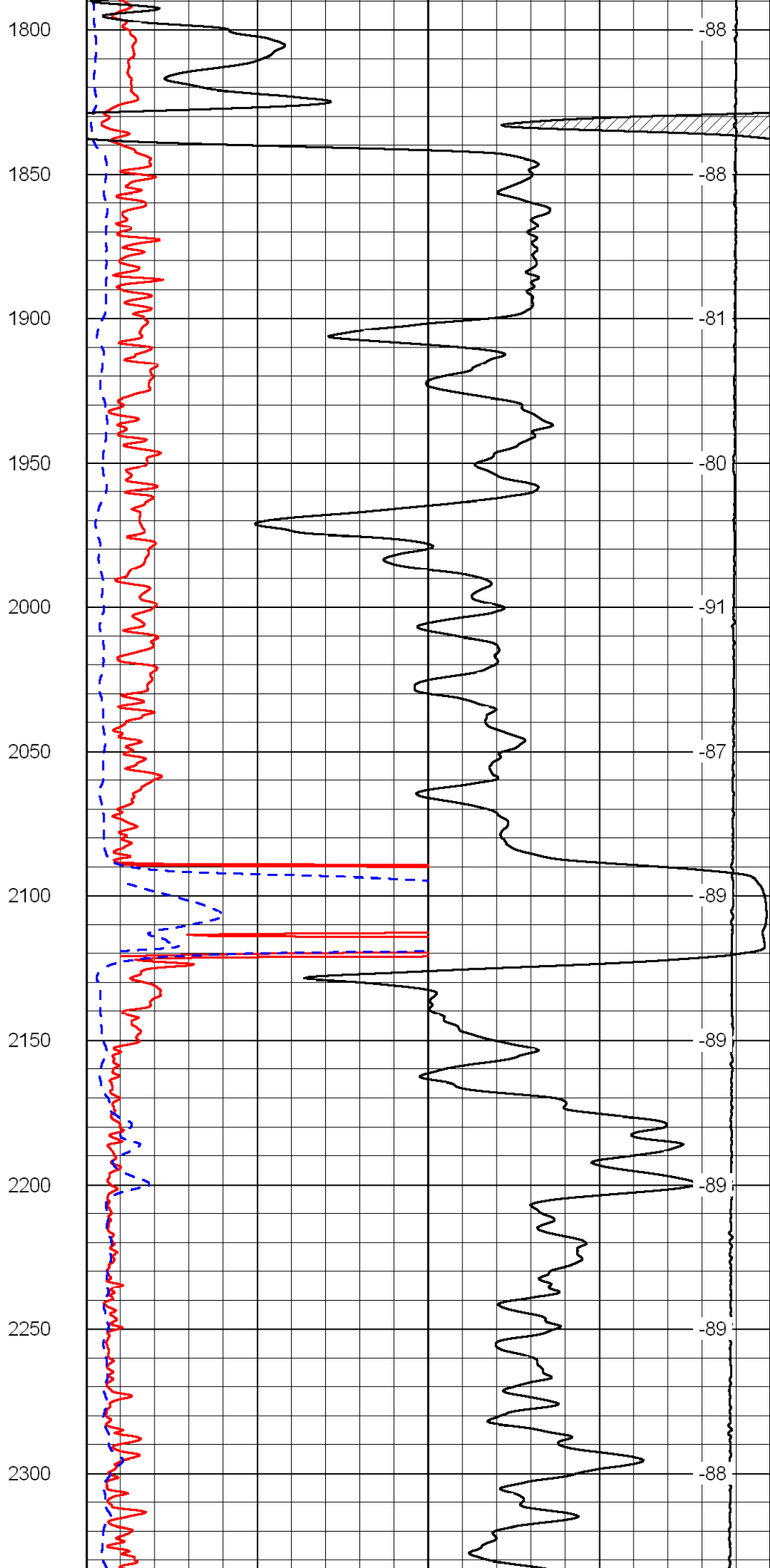
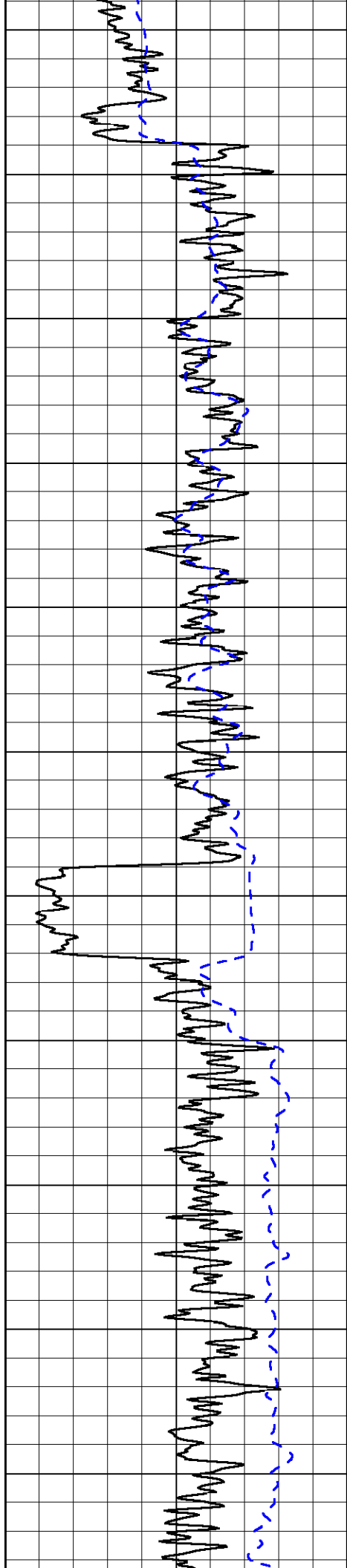
LSPD  
(ft/min)

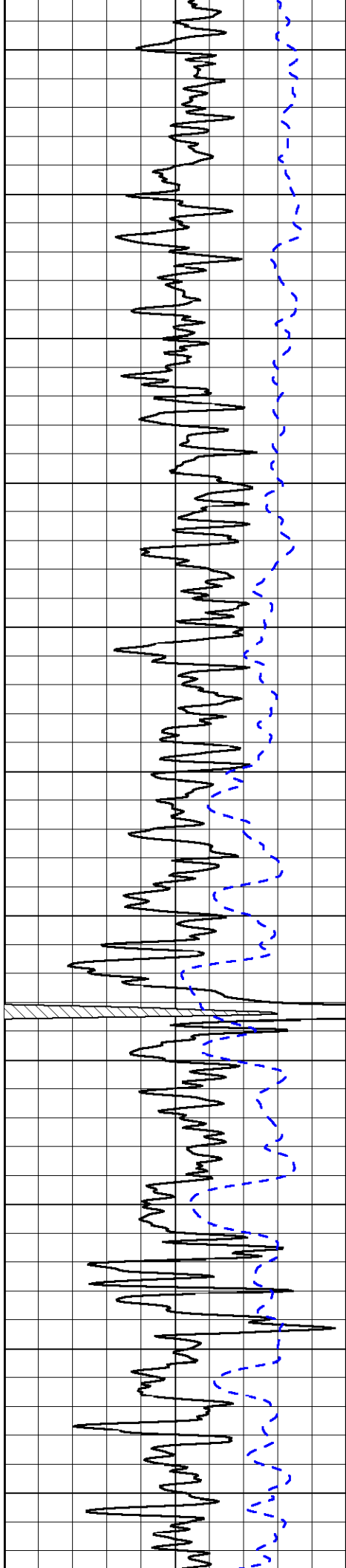
Shallow Resistivity  
50 (Ohm-m) 500  
50 Deep Resistivity (Ohm-m) 500



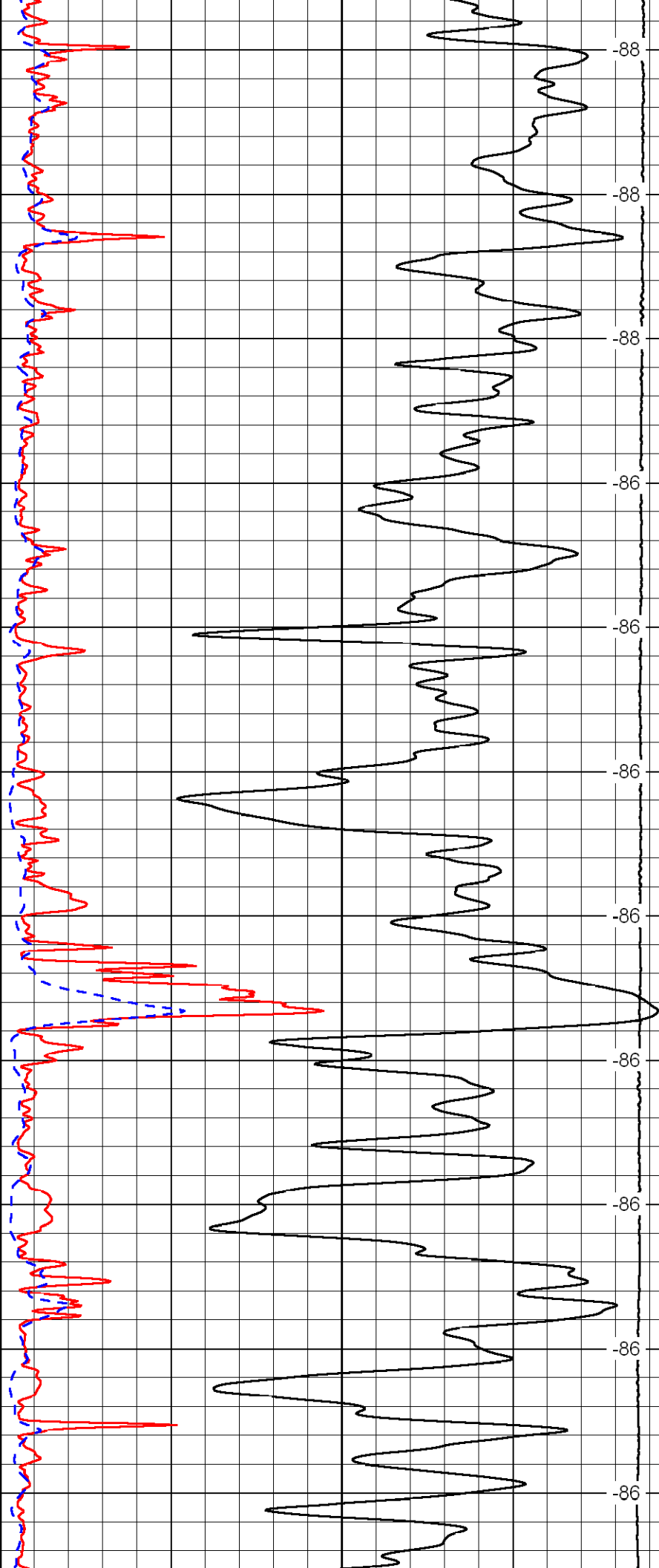




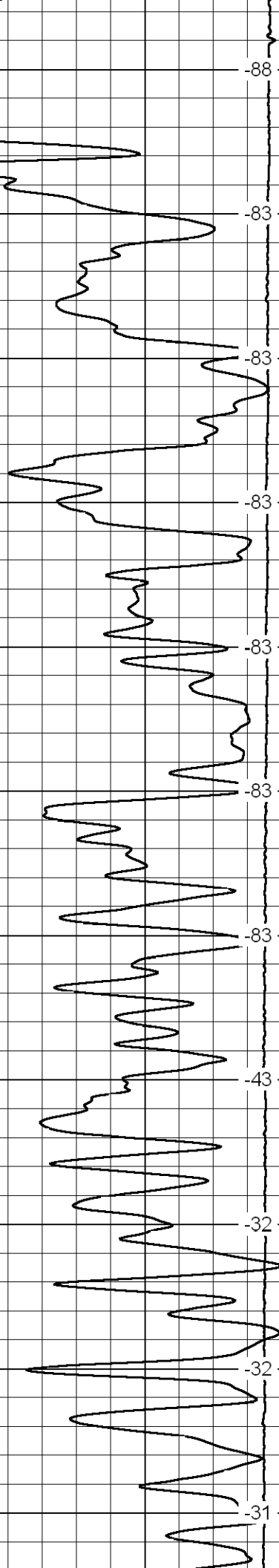
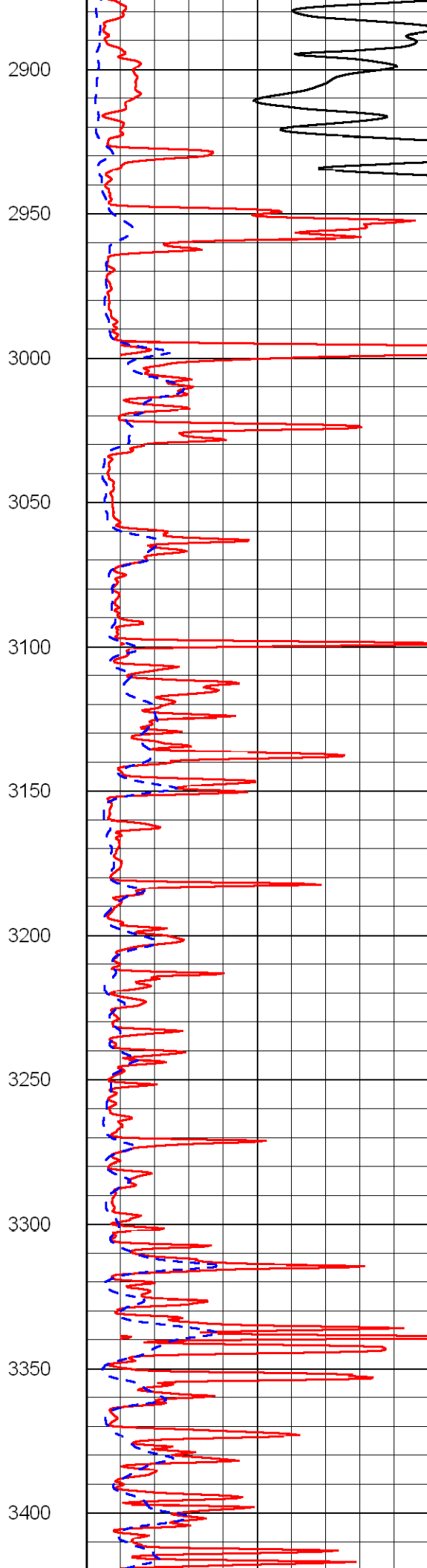
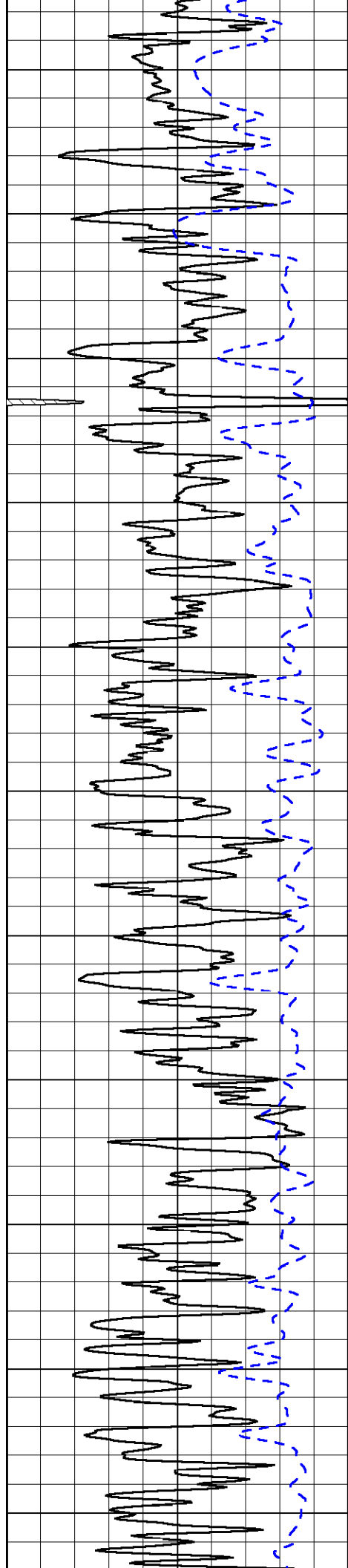


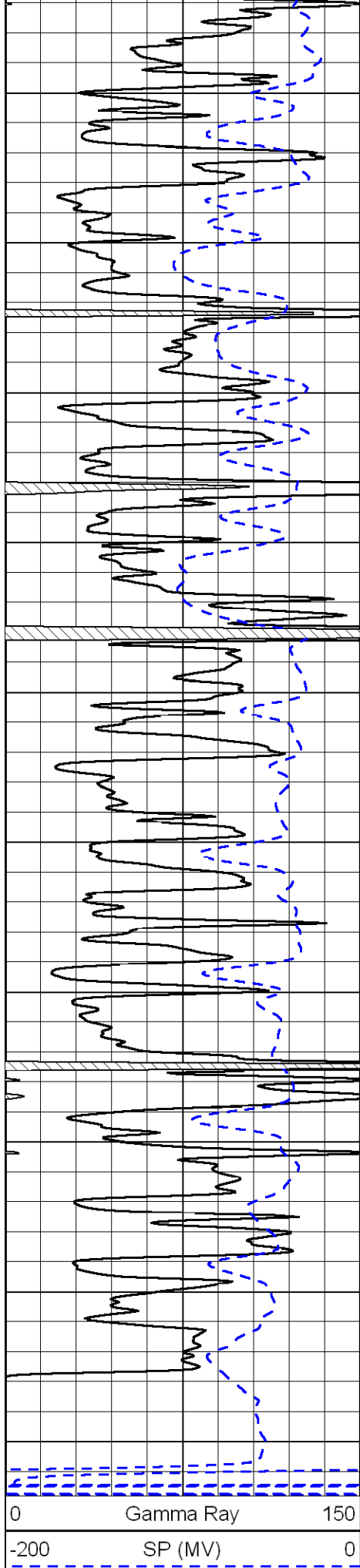


2350  
2400  
2450  
2500  
2550  
2600  
2650  
2700  
2750  
2800  
2850

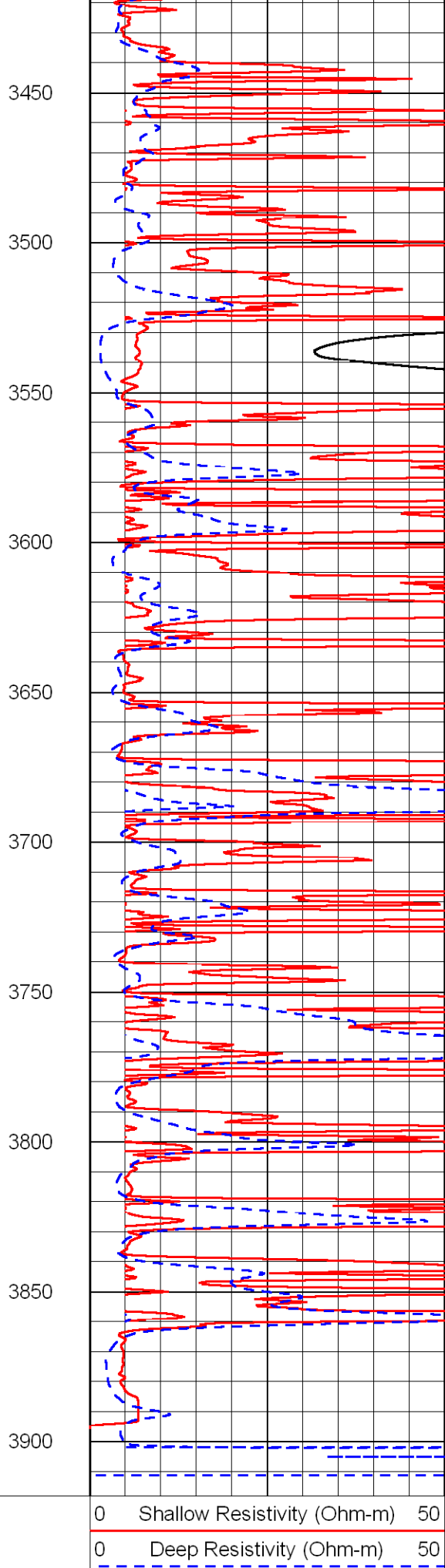


-88  
-88  
-88  
-86  
-86  
-86  
-86  
-86  
-86  
-86  
-86  
-86

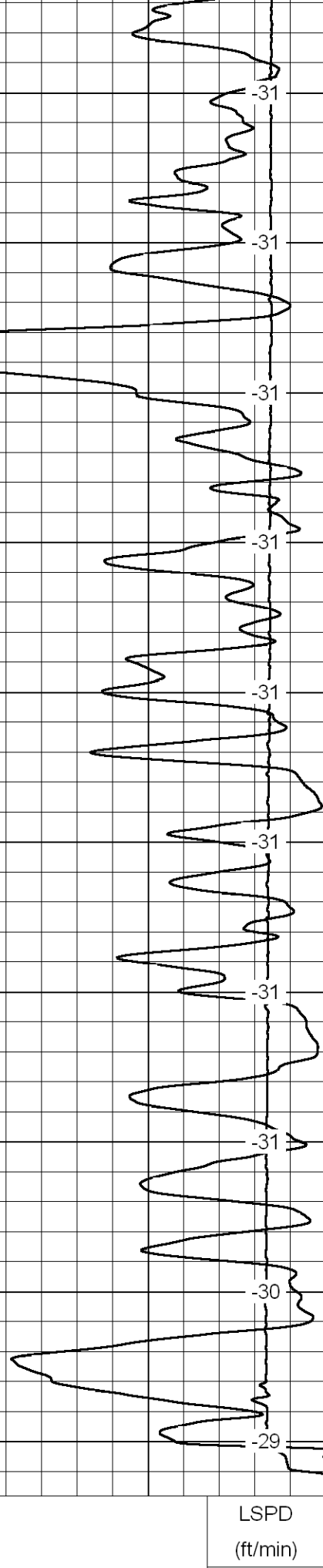




0      Gamma Ray      150  
 -200      SP (MV)      0



0      Shallow Resistivity (Ohm-m)      50  
 0      Deep Resistivity (Ohm-m)      50  
 1000      Conductivity (mmho/m)      0  
 15000      Line Tension (lb)      0



LSPD (ft/min)      0

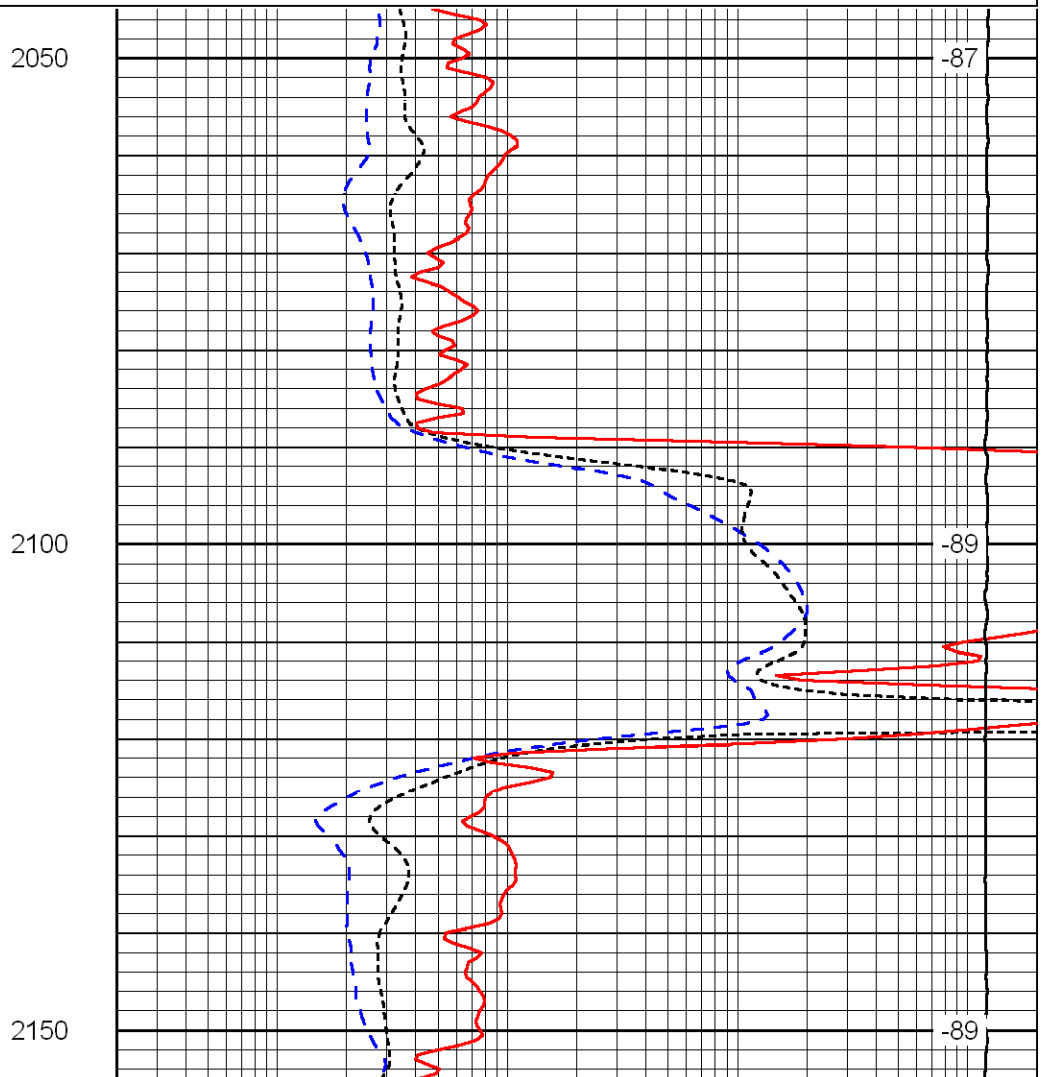
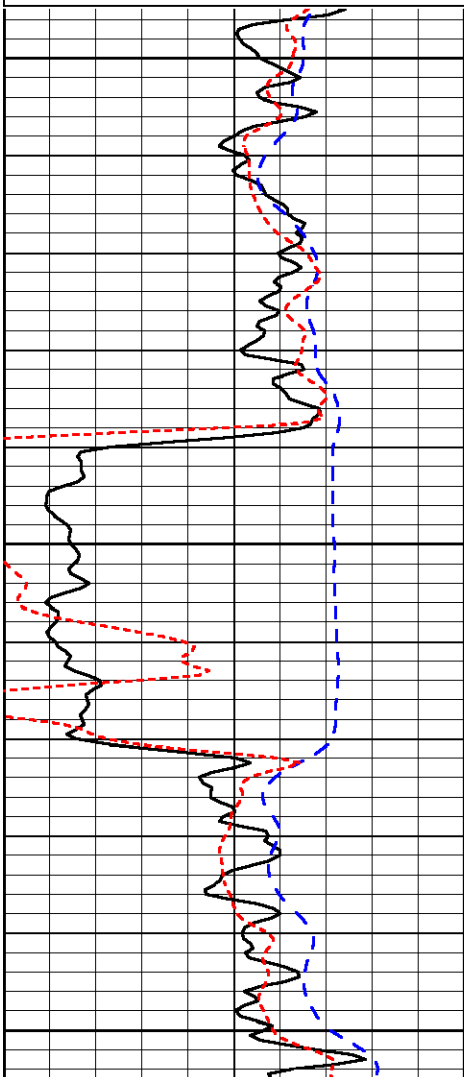
Shallow Resistivity		
50	(Ohm-m)	500
50	Deep Resistivity (Ohm-m)	500

Database File: c:\warrior\data\h&c\_campbell # 18-1\h&chd.db  
 Dataset Pathname: dil/handc2in  
 Presentation Format: dil  
 Dataset Creation: Tue Jan 19 09:31:32 2010  
 Charted by: Depth in Feet scaled 1:240

0	Gamma Ray	150
-200	SP (MV)	0
-160	Rxo / Rt	40

0.2	Deep Resistivity (Ohm-m)	2000
0.2	Medium Resistivity (Ohm-m)	2000
0.2	Shallow Resistivity (Ohm-m)	2000
15000	Line Tension (lb)	0

LSPD  
(ft/min)



0	Gamma Ray	150
-200	SP (MV)	0
-160	Rxo / Rt	40

0.2	Deep Resistivity (Ohm-m)	2000
0.2	Medium Resistivity (Ohm-m)	2000
0.2	Shallow Resistivity (Ohm-m)	2000
15000	Line Tension (lb)	0

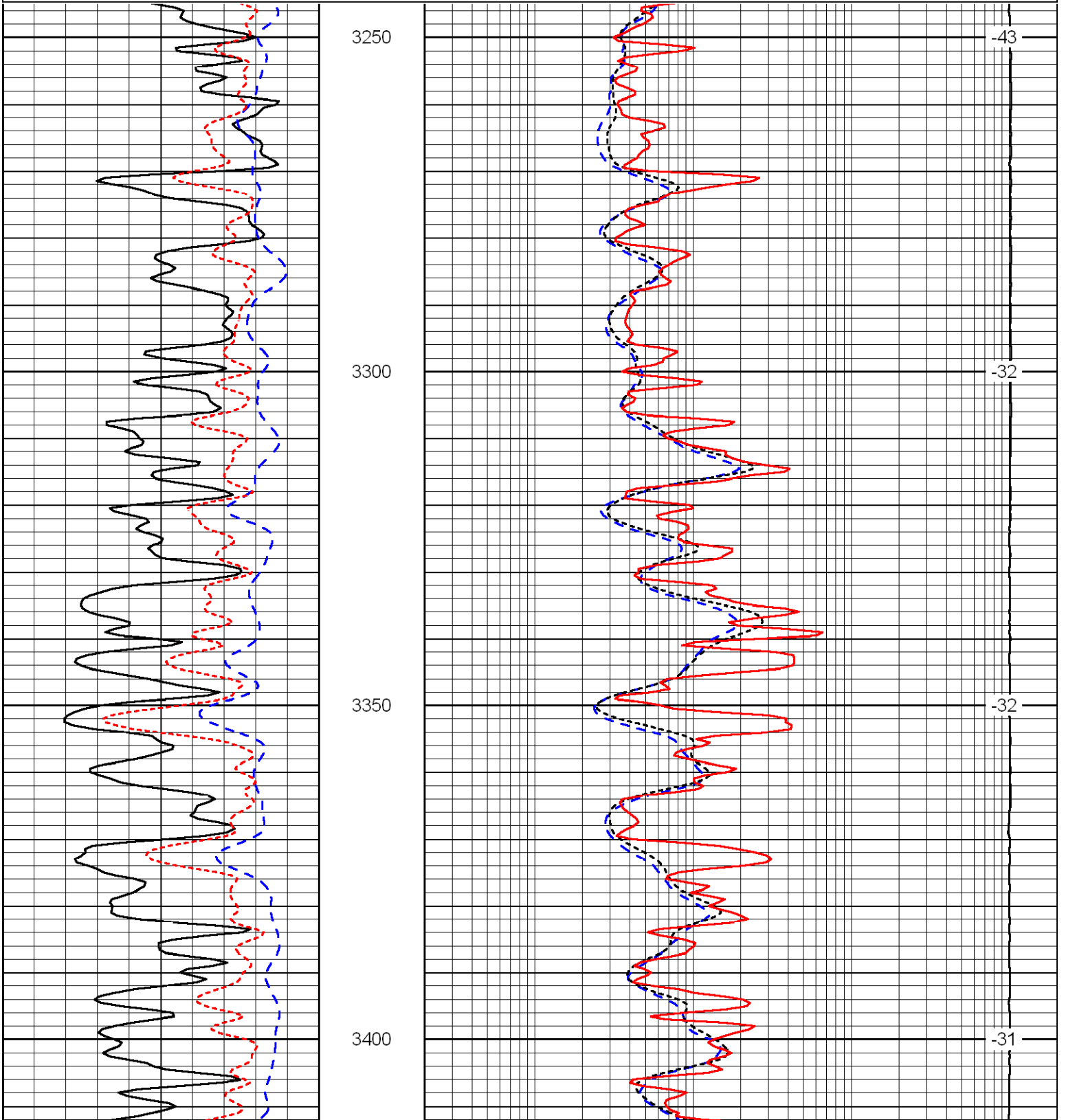
LSPD  
(ft/min)

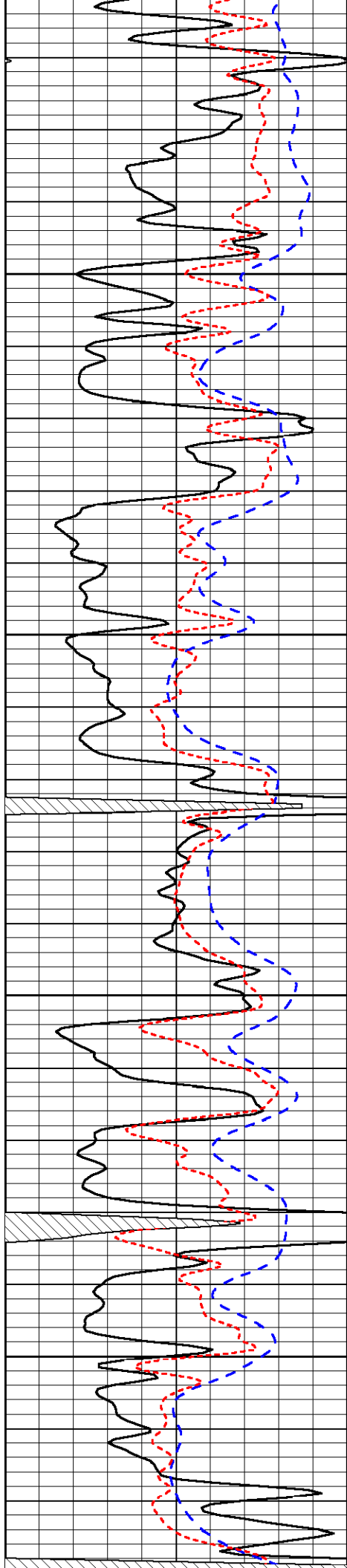
Database File: c:\warrior\data\h&c\_campbell # 18-1\h&chd.db  
 Dataset Pathname: dil/handc2in  
 Presentation Format: dil  
 Dataset Creation: Tue Jan 19 09:31:32 2010  
 Charted by: Depth in Feet scaled 1:240

0	Gamma Ray	150
-200	SP (MV)	0
-160	Rxo / Rt	40

0.2	Deep Resistivity (Ohm-m)	2000
0.2	Medium Resistivity (Ohm-m)	2000
0.2	Shallow Resistivity (Ohm-m)	2000
15000	Line Tension (lb)	0

LSPD  
(ft/min)



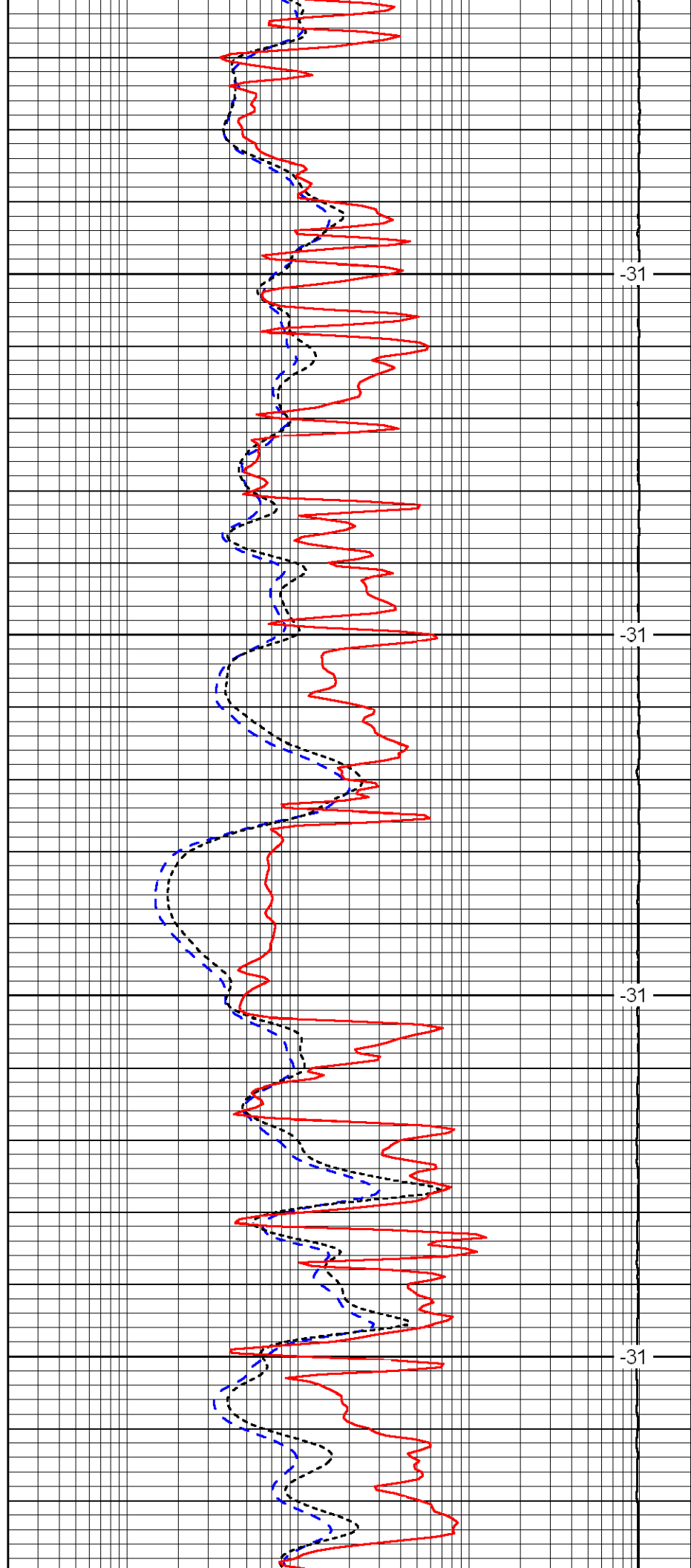


3450

3500

3550

3600

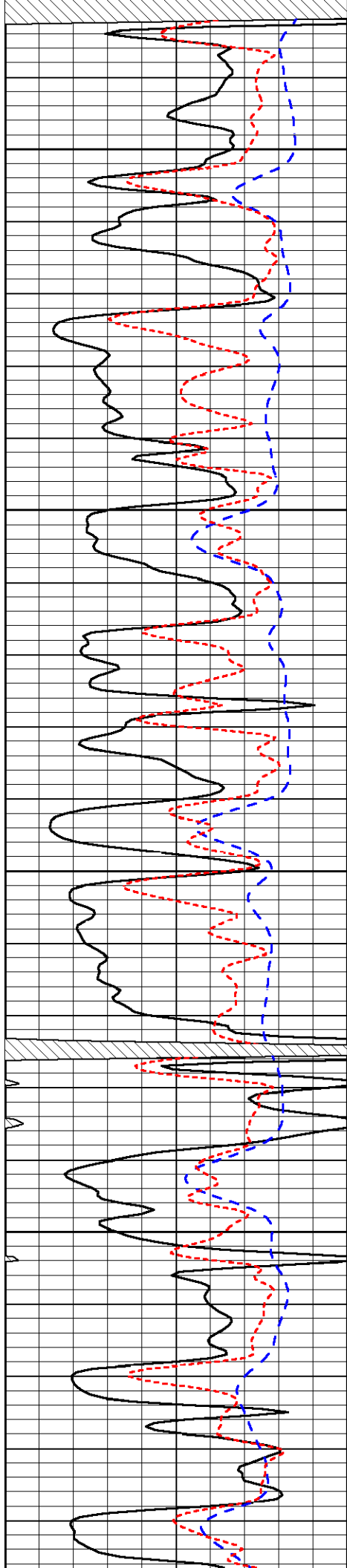


-31

-31

-31

-31

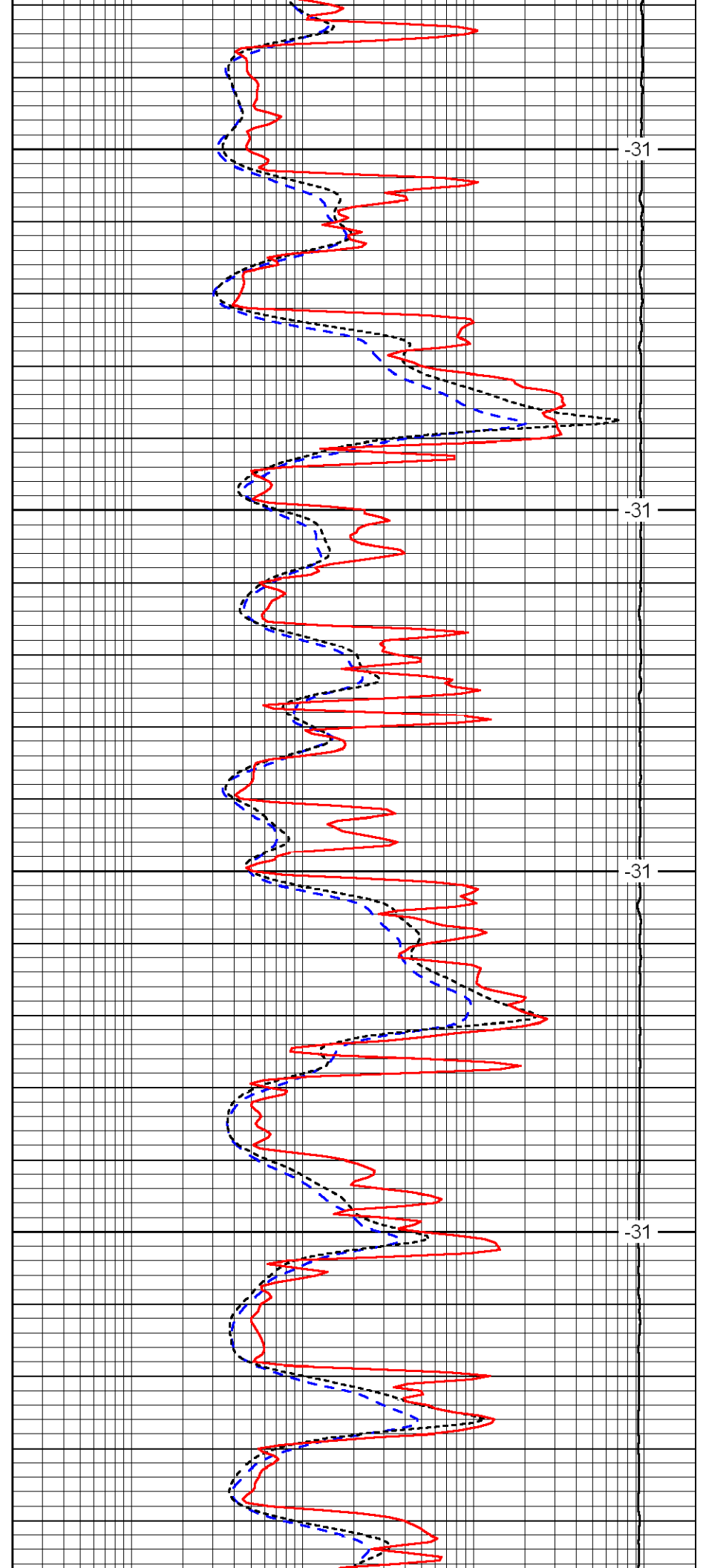


3650

3700

3750

3800

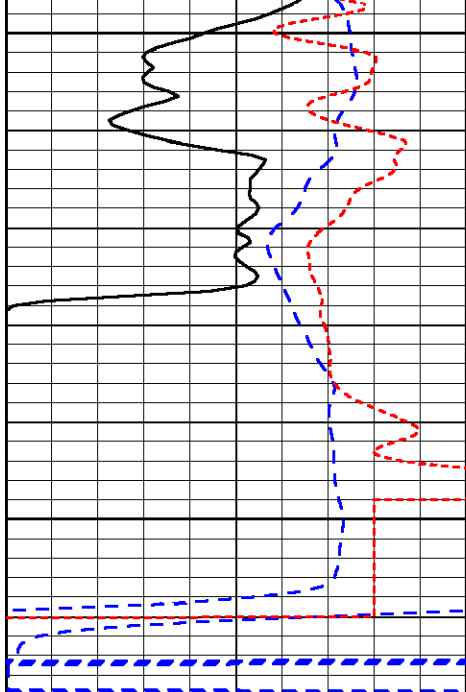


-31

-31

-31

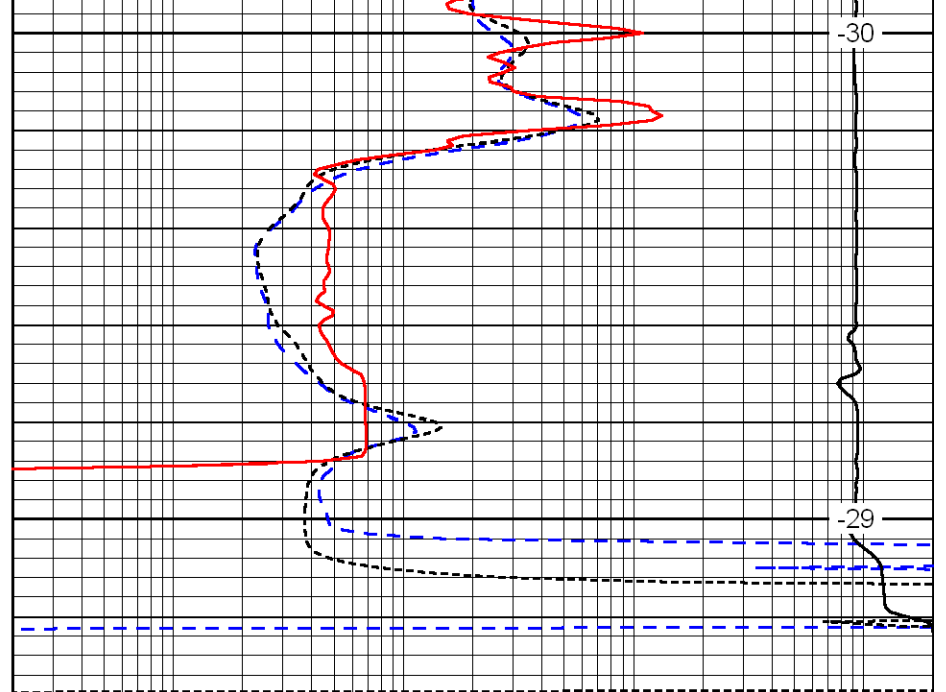
-31



3850

3900

0	Gamma Ray	150
-200	SP (MV)	0
-160	Rxo / Rt	40



-30

-29

0.2	Deep Resistivity (Ohm-m)	2000
0.2	Medium Resistivity (Ohm-m)	2000
0.2	Shallow Resistivity (Ohm-m)	2000
15000	Line Tension (lb)	0

LSPD  
(ft/min)