



**Borehole Compensated  
Sonic Log**

**DIGITAL LOG (785) 625-3858**

API No. 15-187-21,147-00-00	Company <b>Berexco, Inc.</b>	Location <b>335' FNL &amp; 932' FWL</b>	Other Services CNL/CDL MEL/DIL
	Well <b>Seyb No. 1-29</b>		Elevation K.B. 3564 D.F. 3551 G.L. 3551
	Field <b>Wildcat</b>		
	County <b>Stanton</b>		
	State <b>Kansas</b>		

Permanent Datum Log Measured From Drilling Measured From	Ground Level Kelly Bushing Kelly Bushing	Elevation 3551 13 Ft. Above Perm. Datum
Date 02/27/2009		

Run Number	Two
Type Log	BHC Sonic
Depth Driller	5780
Depth Logger	5778
Bottom Logged Interval	5767
Top Logged Interval	0
Type Fluid In Hole	Chemical
Salinity, PPM CL	700
Density	9.2
Level	Full
Max. Rec. Temp. F	136
Operating Rig Time	6 Hours
Equipment -- Location	10 Hays
Recorded By	Jason Wellbrock
Witnessed By	Byron Bynog

Borehole Record		Casing Record					
Run No	Bit	From	To	Size	Wgt.	From	To
1	12.25	00	1582	8.625	24#	00	1582
2	7.875	1582	5780				

<<< Fold Here >>>

All interpretations are opinions based on inferences from electrical or other measurements and we cannot and do not guarantee the accuracy or correctness of any interpretation, and we shall not, except in the case of gross or willful negligence on our part, be liable or responsible for any loss, costs, damages, or expenses incurred or sustained by anyone resulting from any interpretation made by any of our officers, agents or employees. These interpretations are also subject to our general terms and conditions set out in our current Price Schedule.

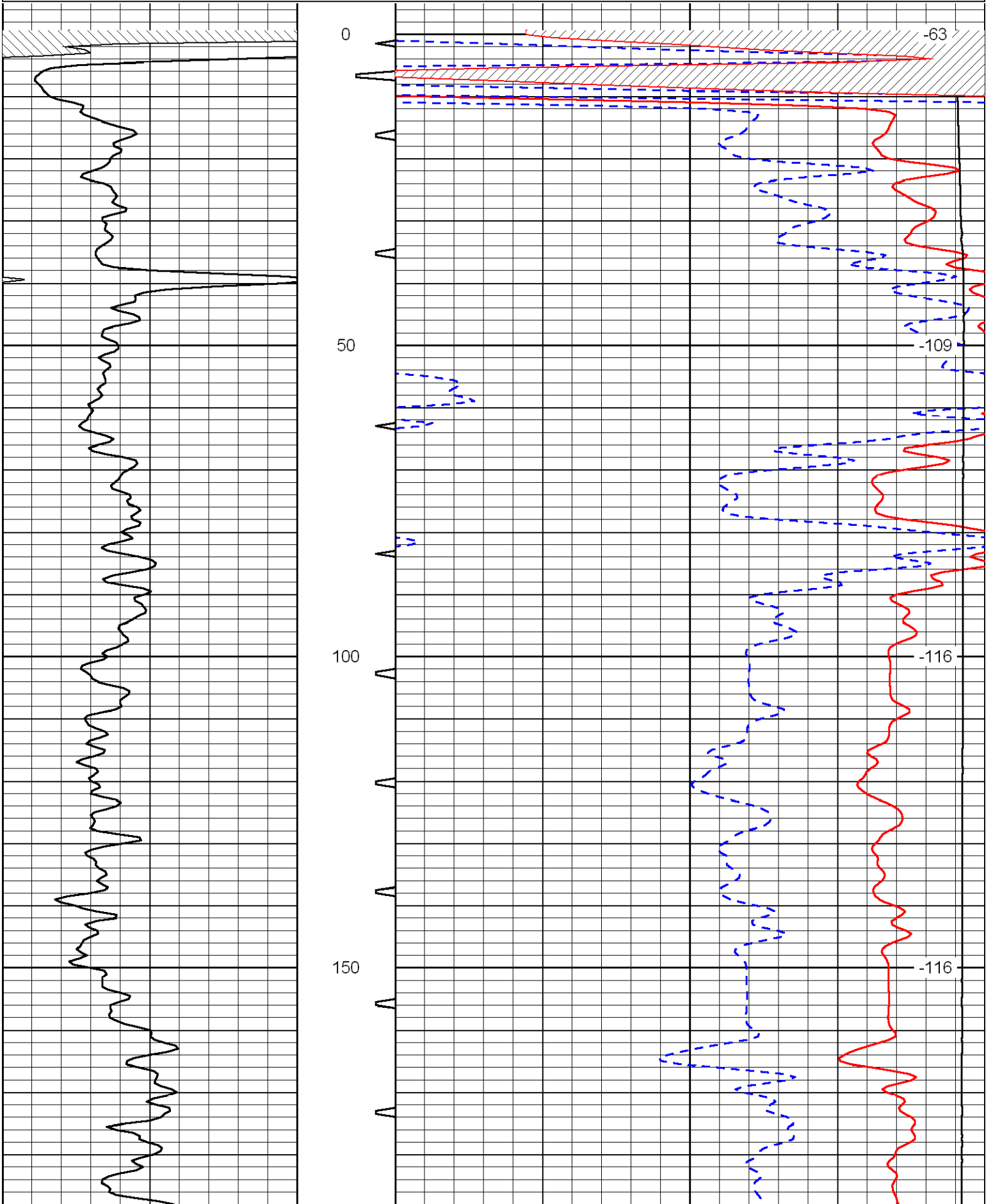
**Comments**

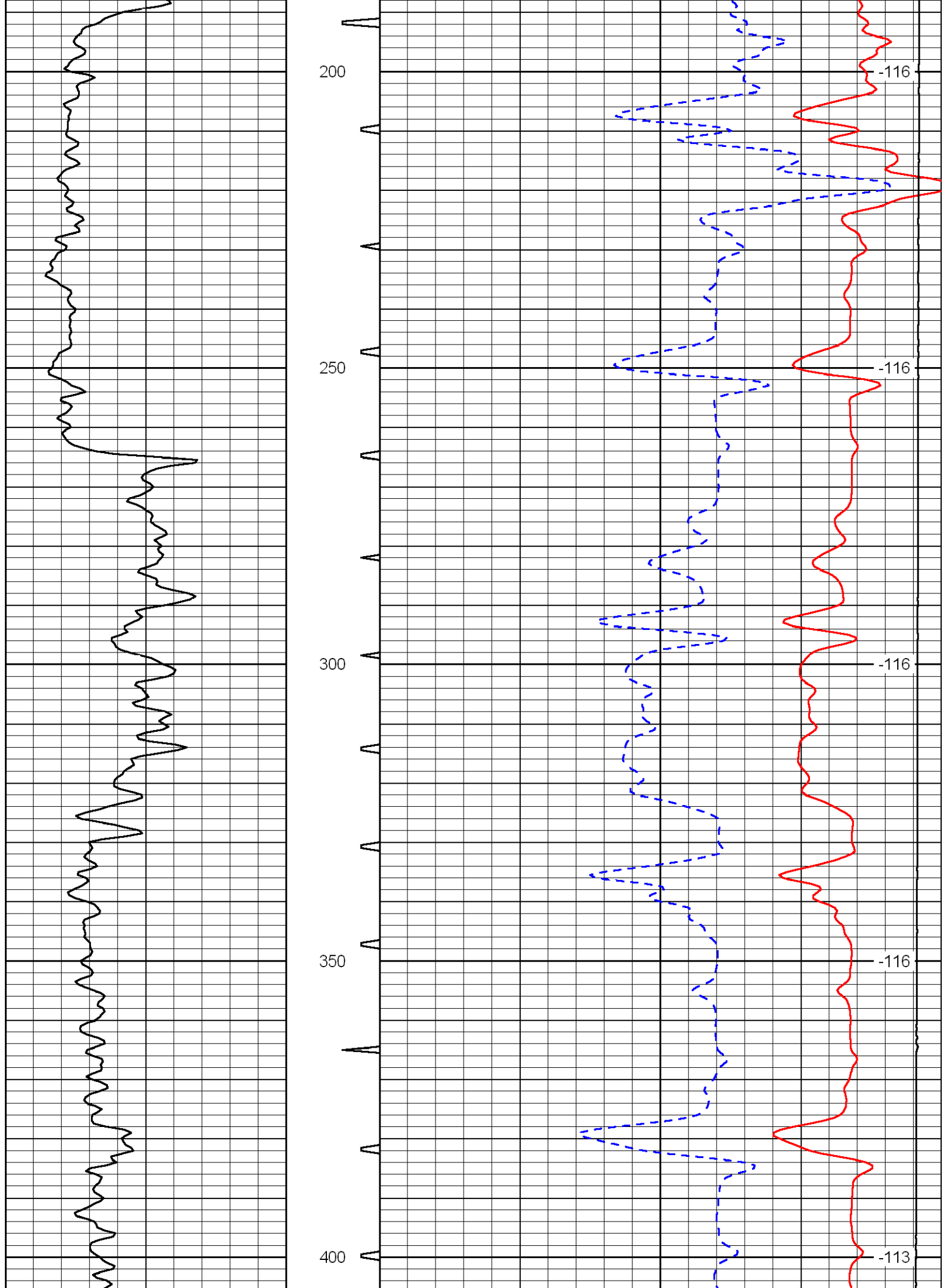
Thank you for using Log-Tech, Inc.  
(785) 625-3858

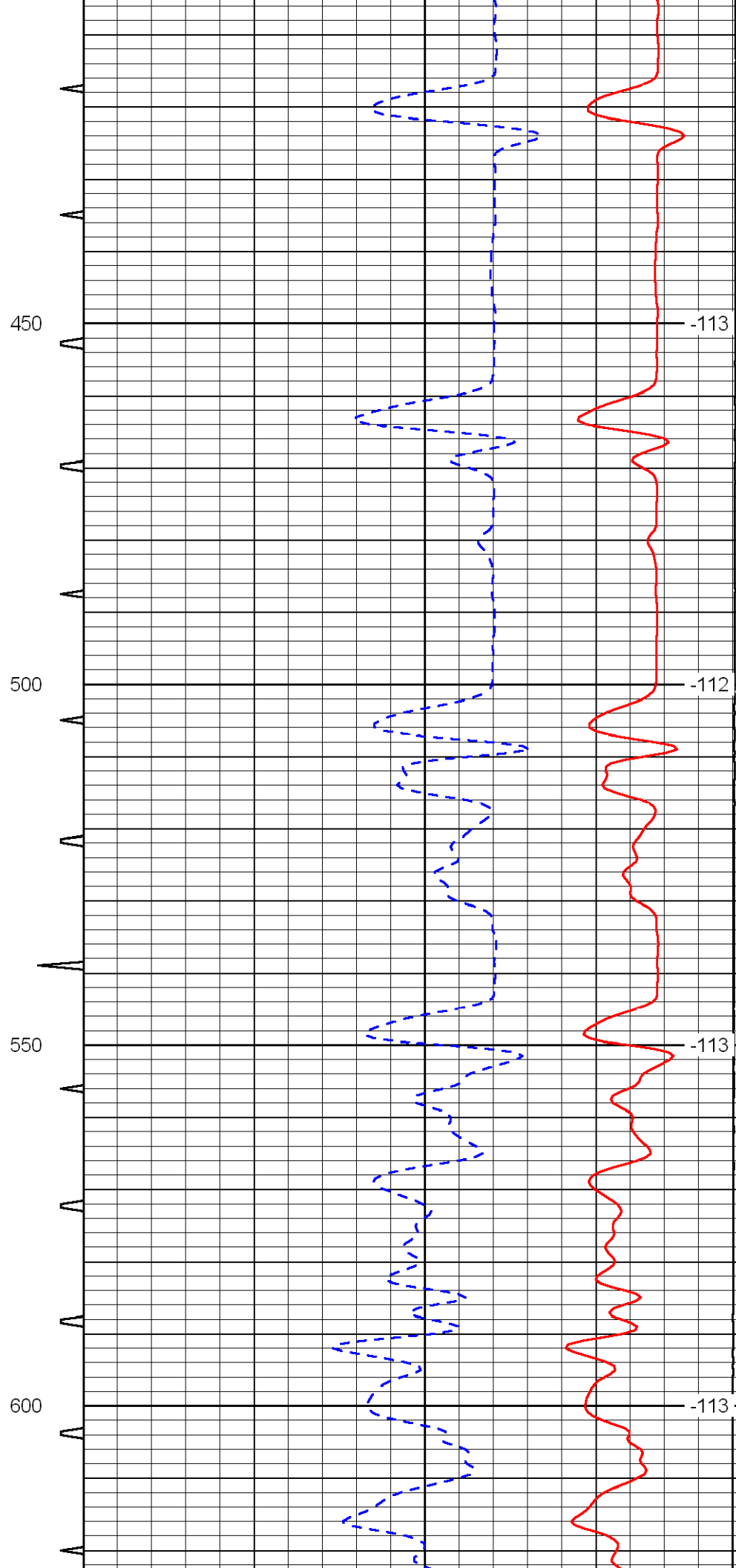
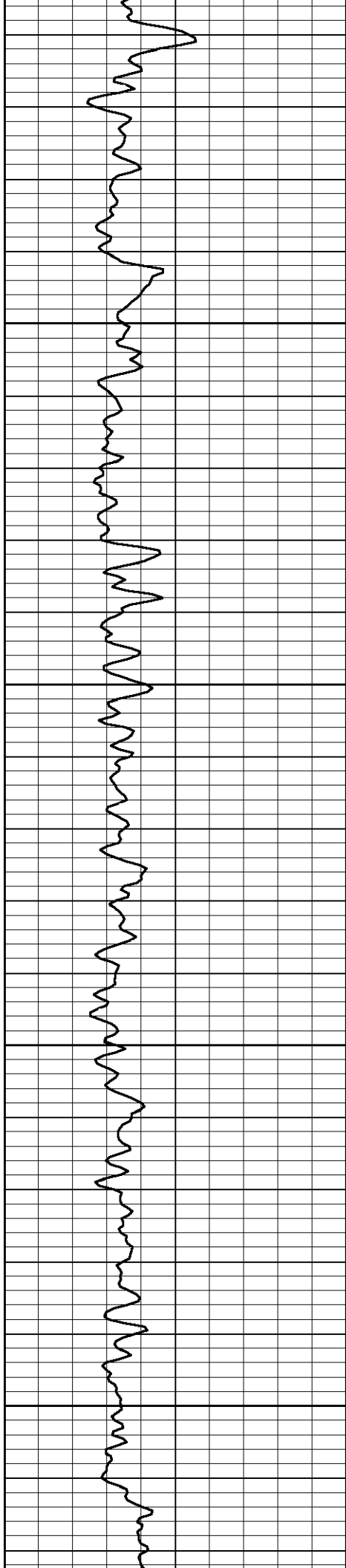
Mantor W 3, N Into

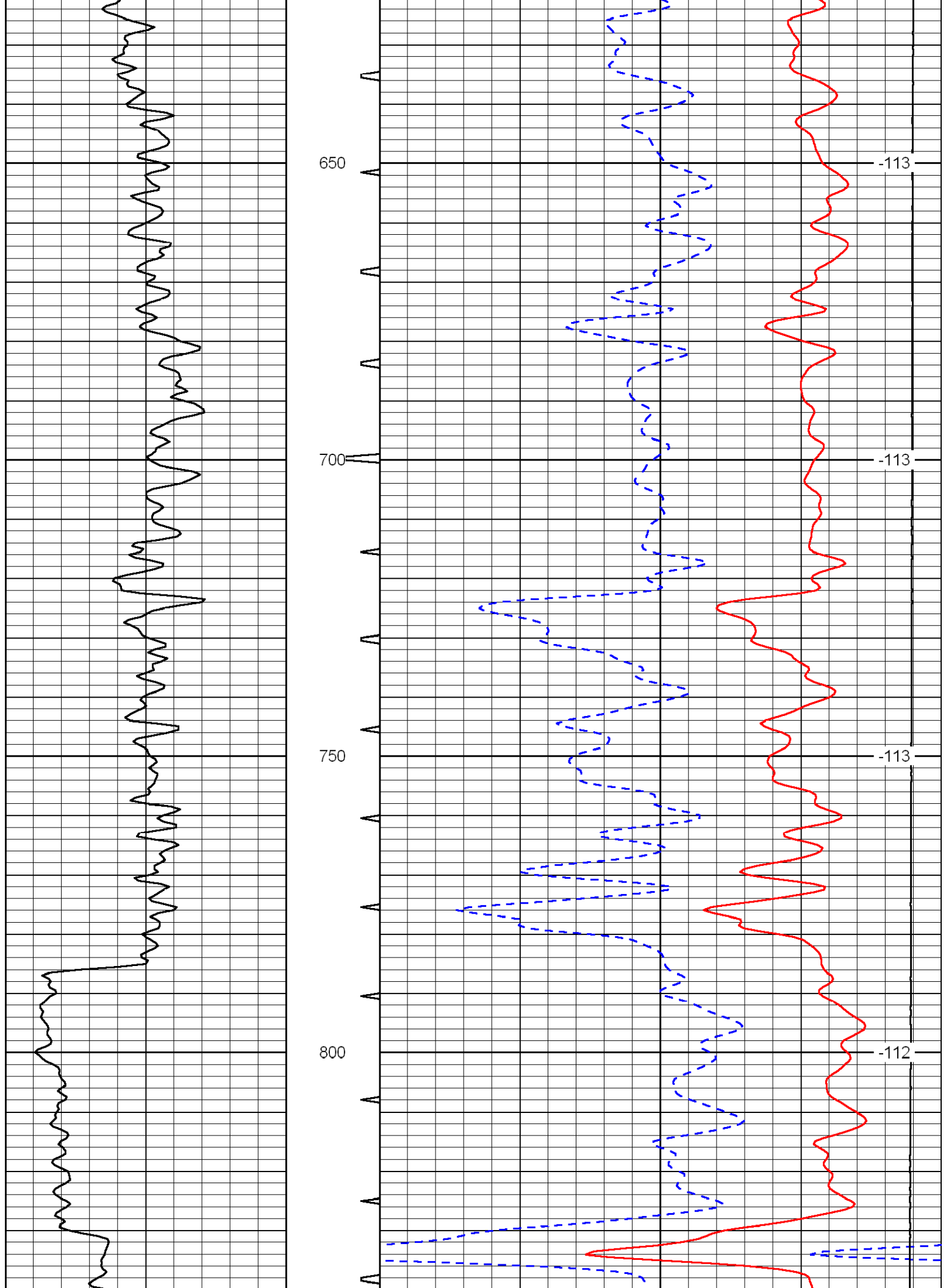
Database File: c:\warrior\data\berexco\_seyb no. 1-29\berexhd.db  
 Dataset Pathname: dil\ber2in  
 Presentation Format: sonic  
 Dataset Creation: Fri Feb 27 15:22:42 2009  
 Charted by: Depth in Feet scaled 1:240

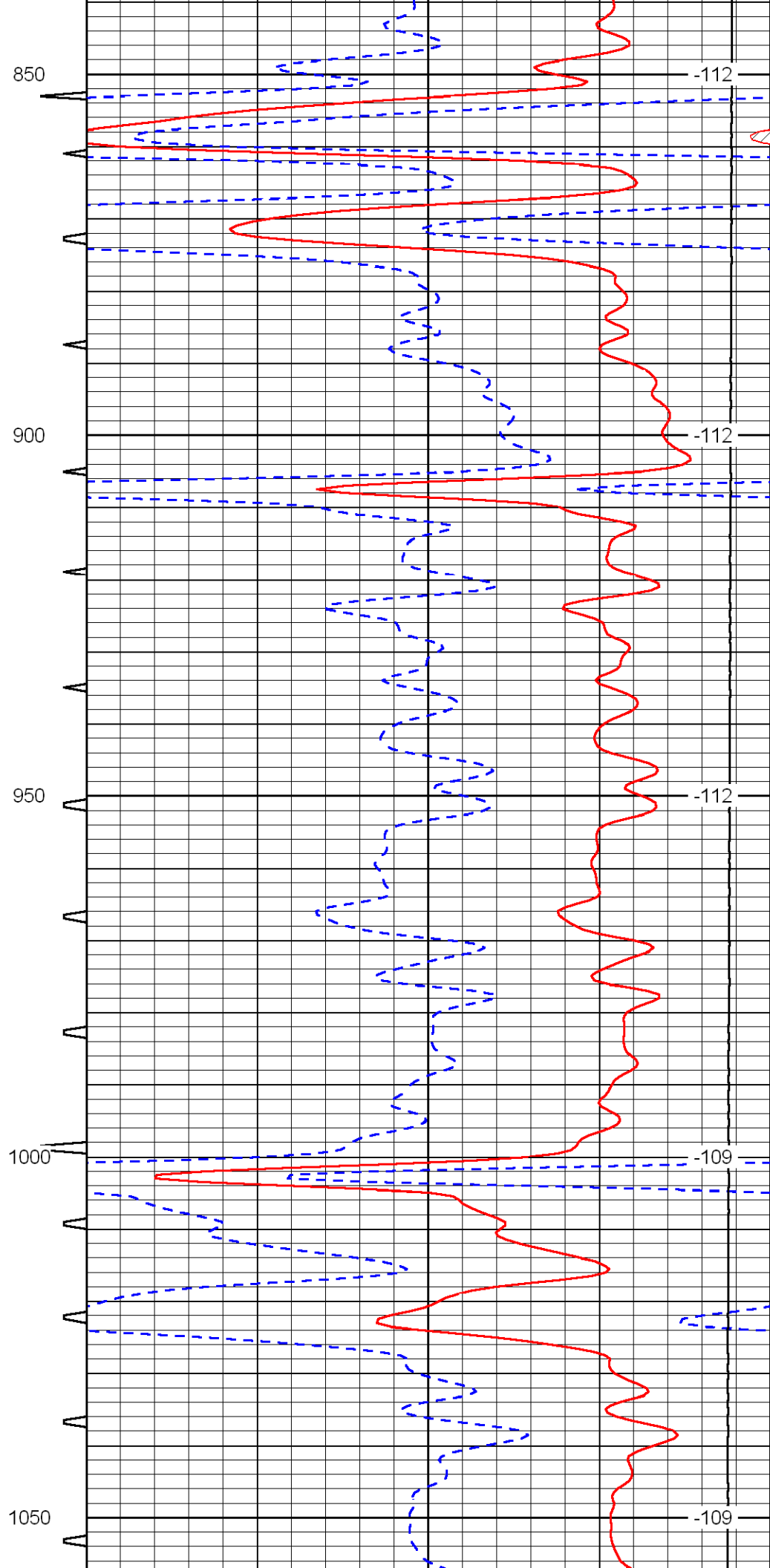
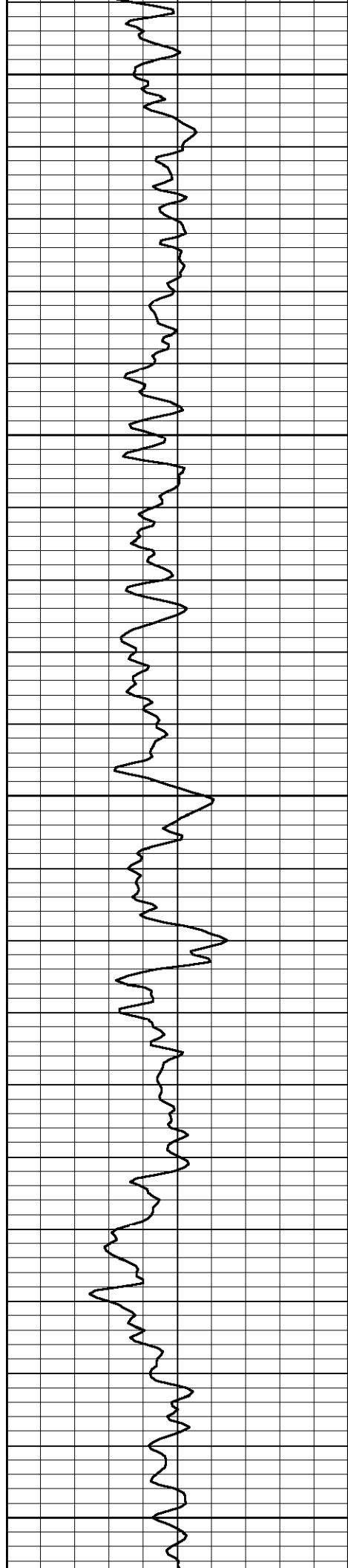
0	Gamma Ray	150	Sonic Int	140	Delta Time (usec/ft) (usec/ft)	40
150	Gamma Ray	300	5 (msec)	0	SPOR (pu)	-10
6	Caliper (in)	16		10000	LTEN (lb) (lb)	0
						LSPD (ft/min)

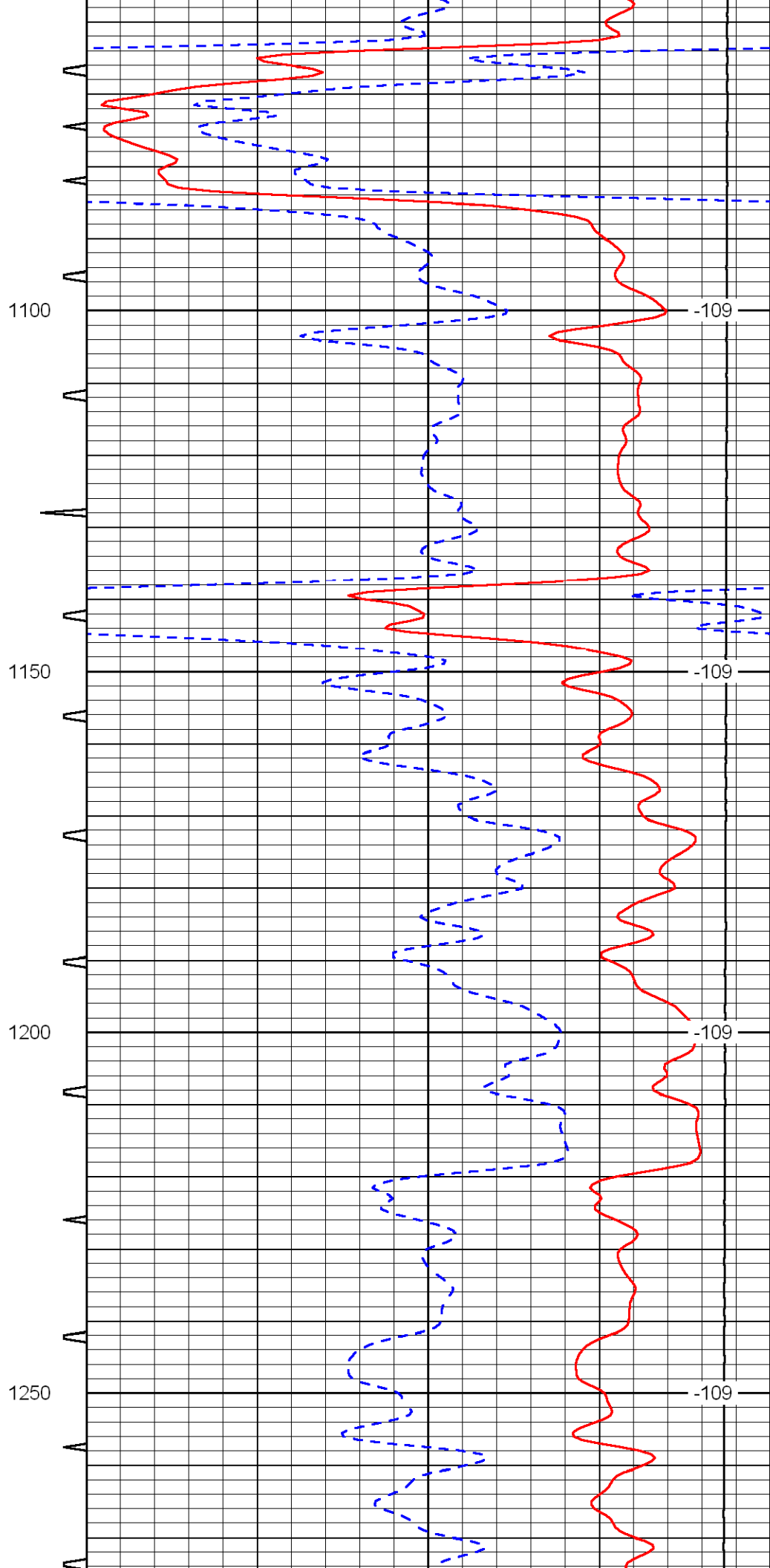
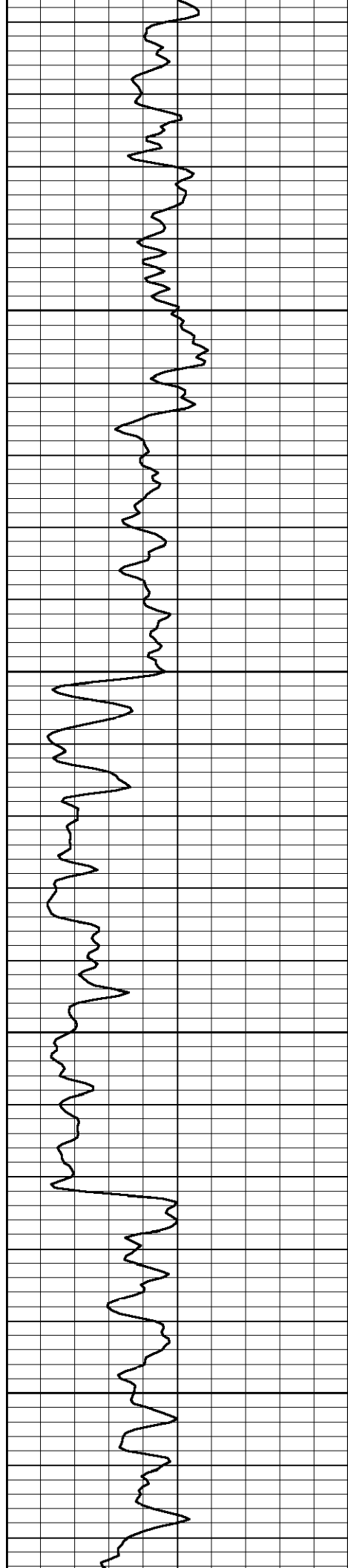


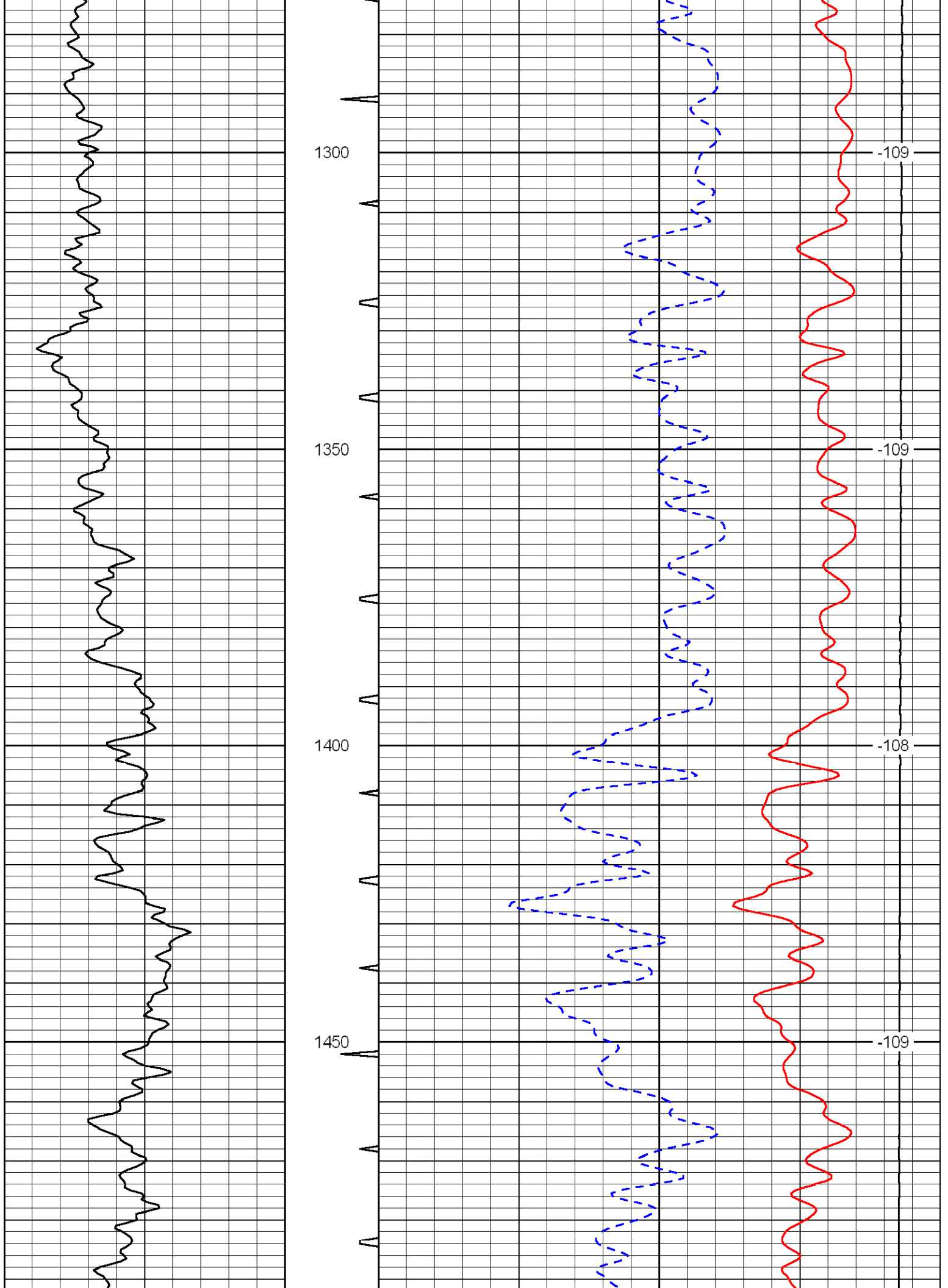


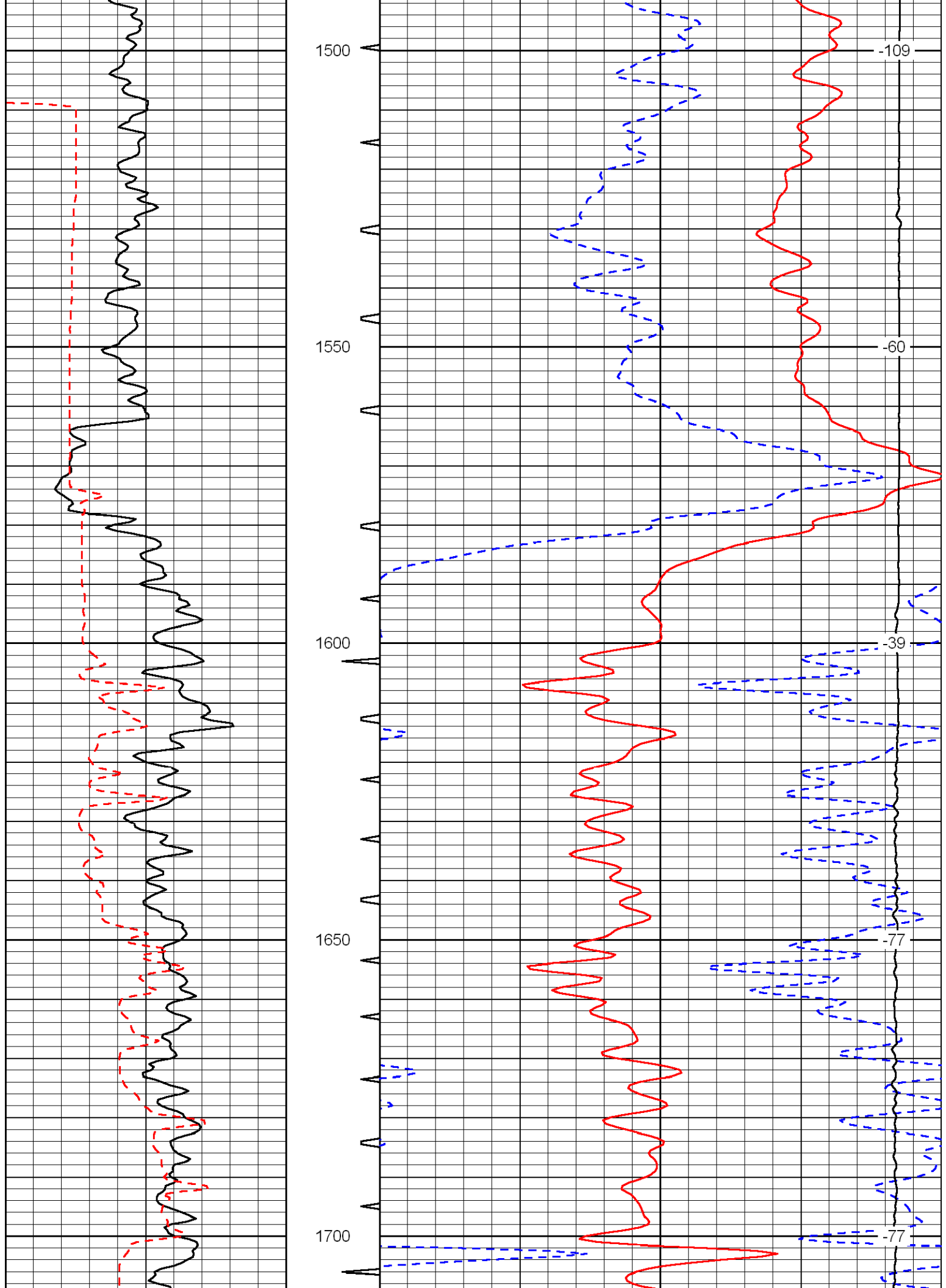


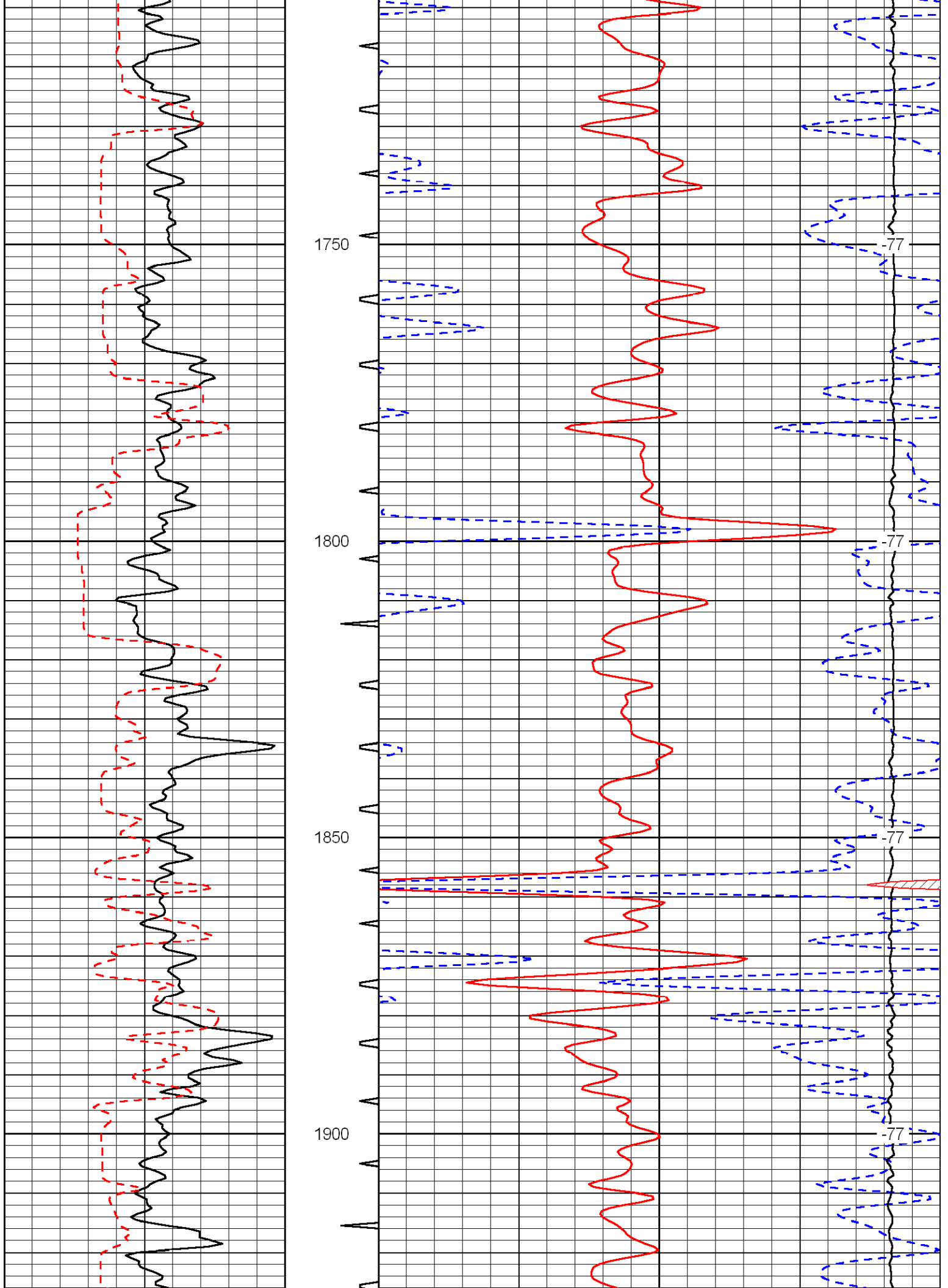


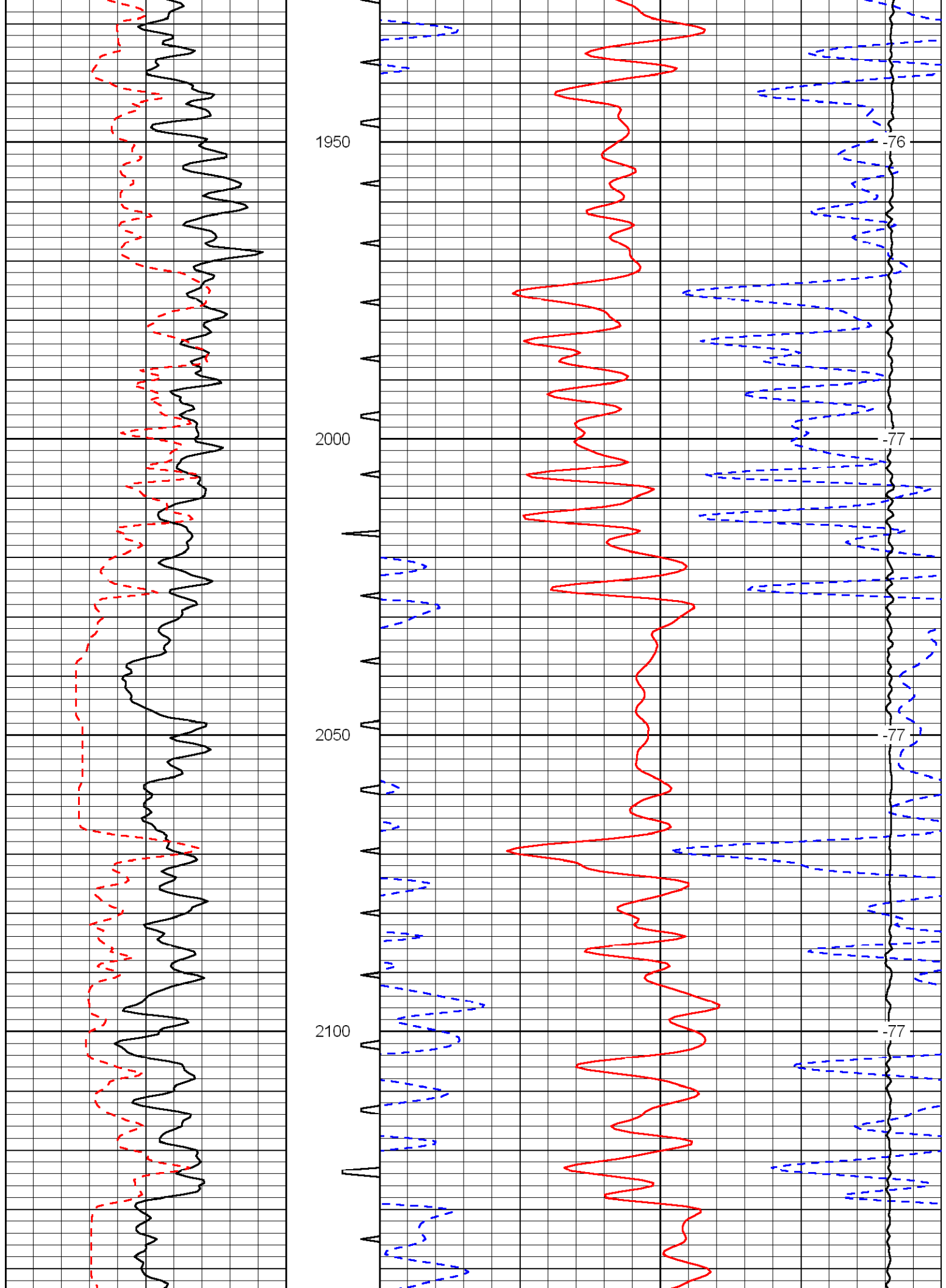


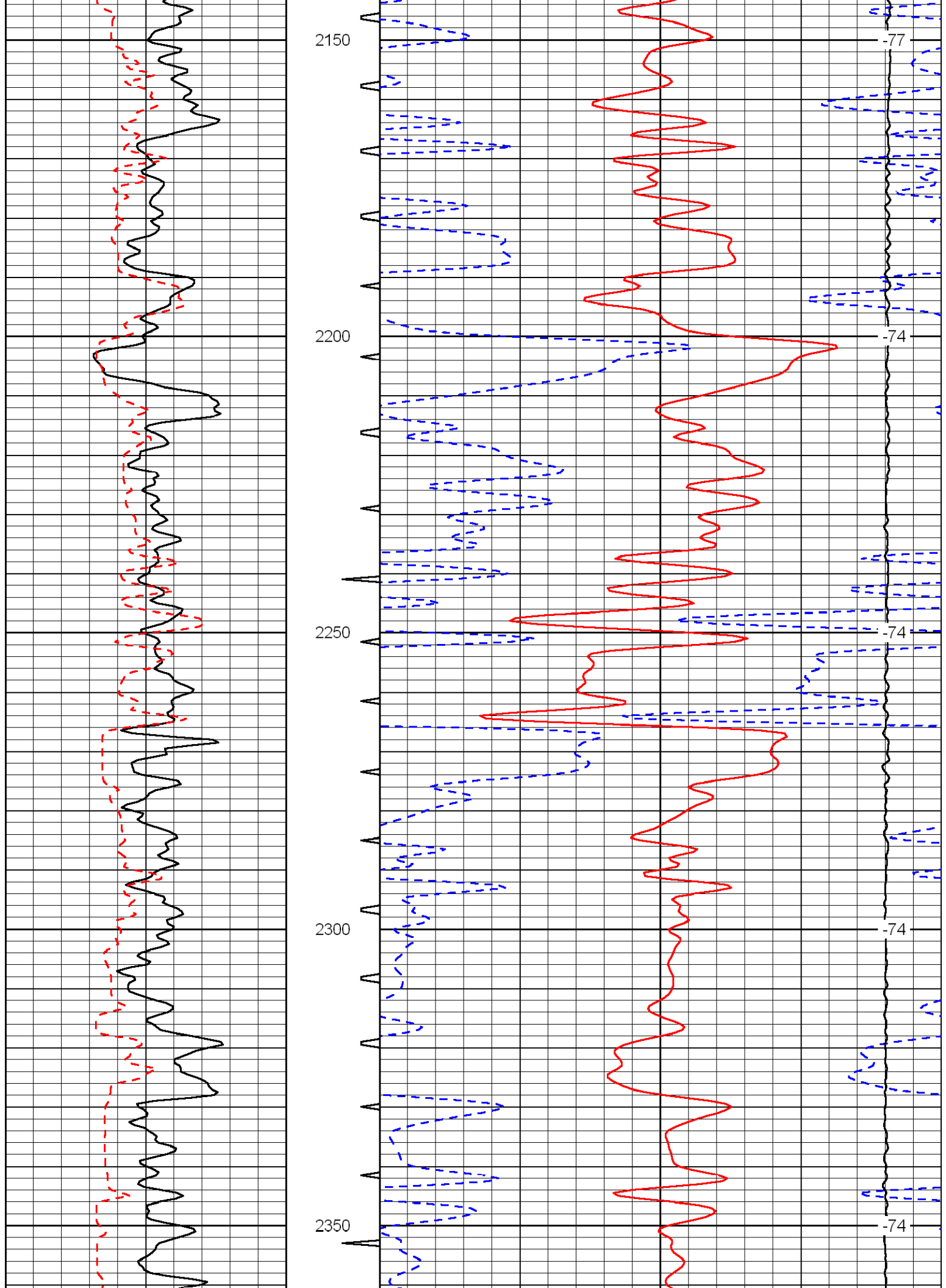


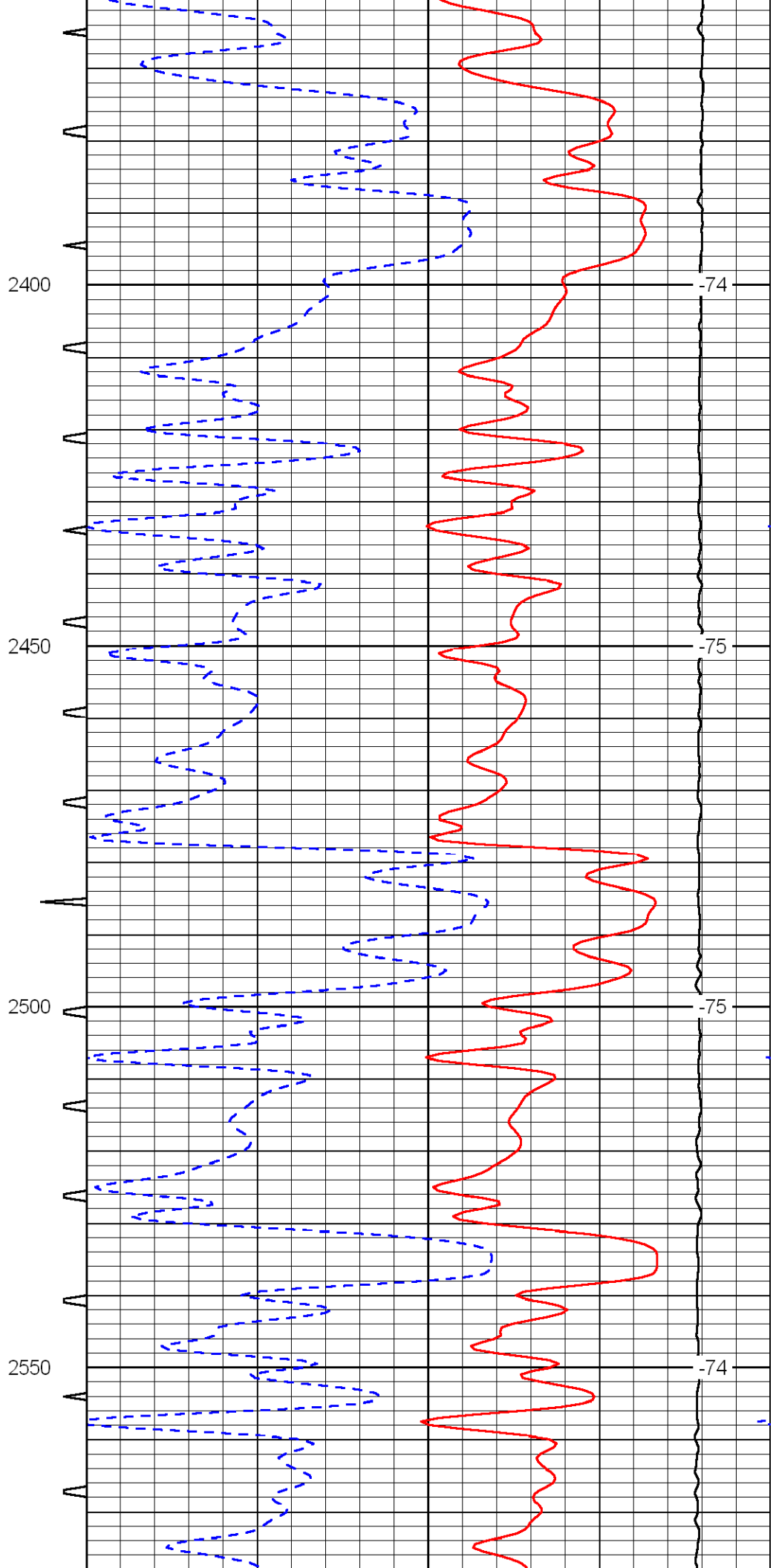
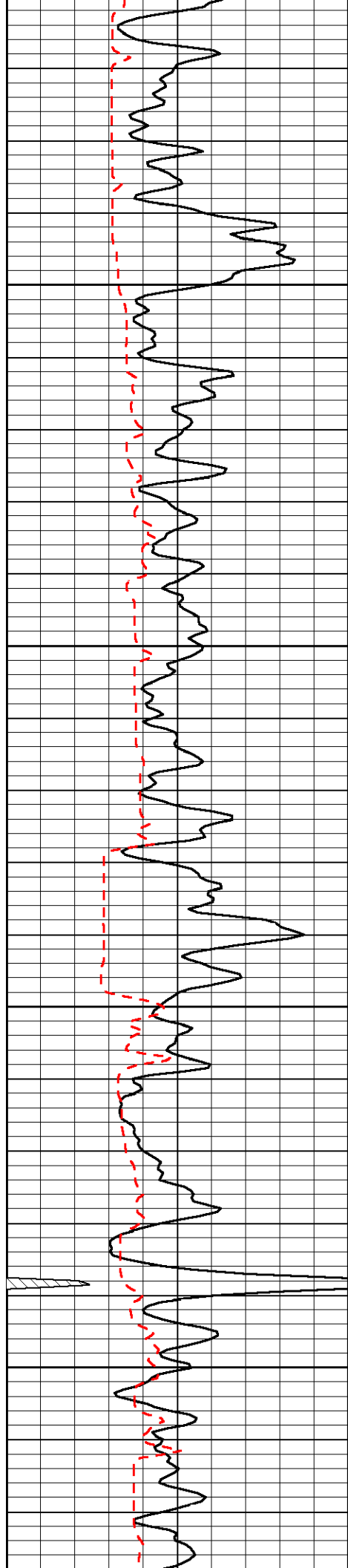


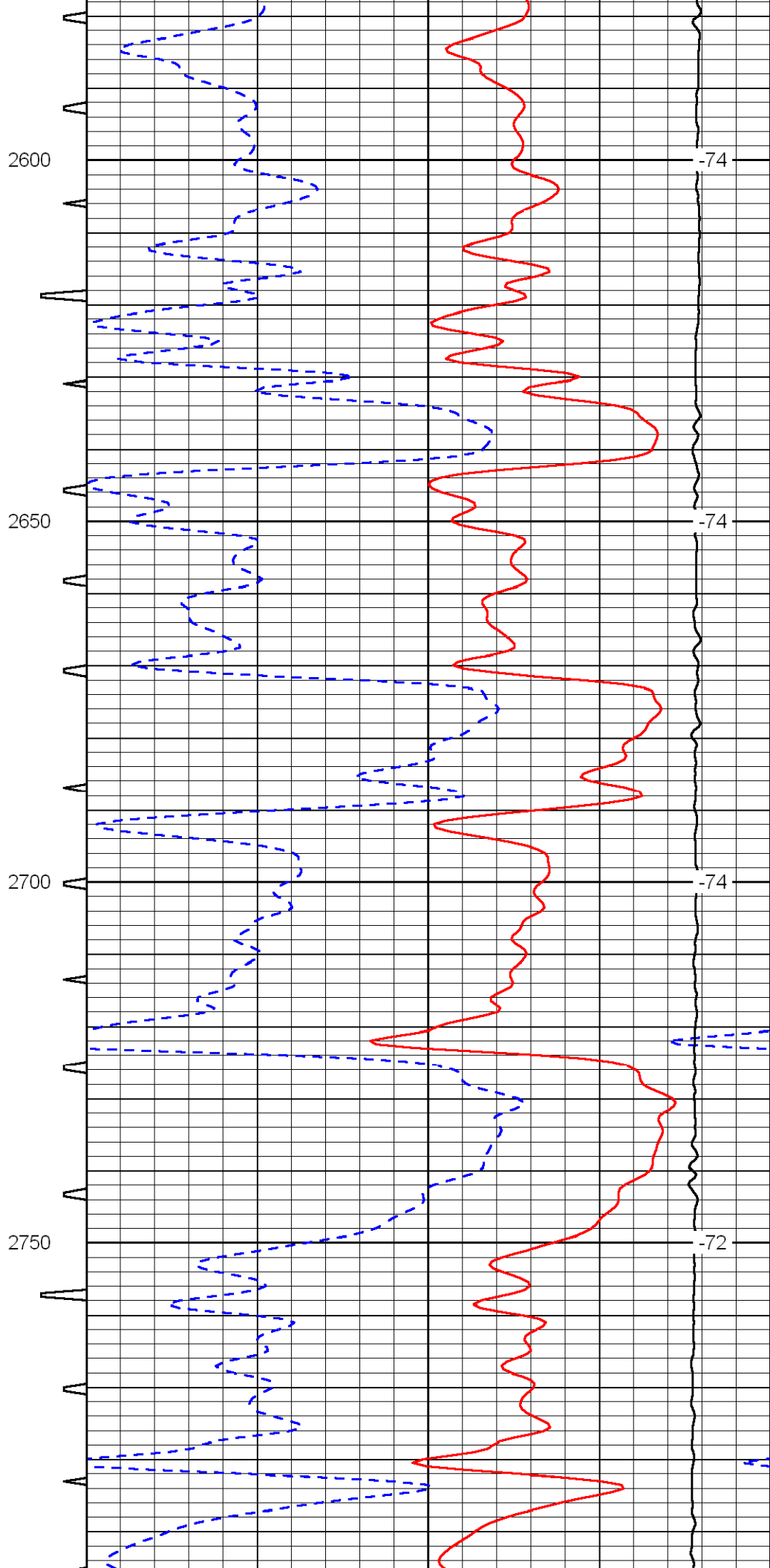
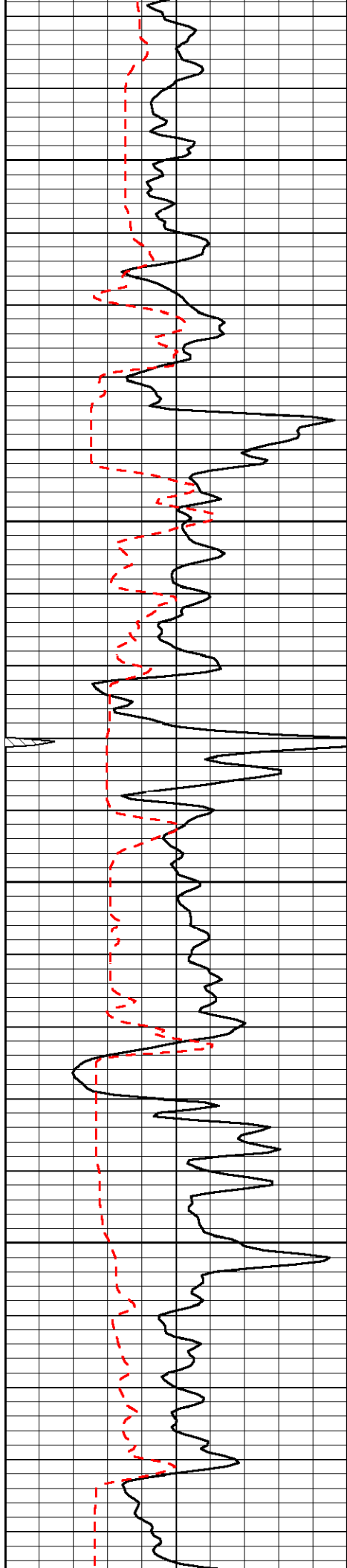












2600

-74

2650

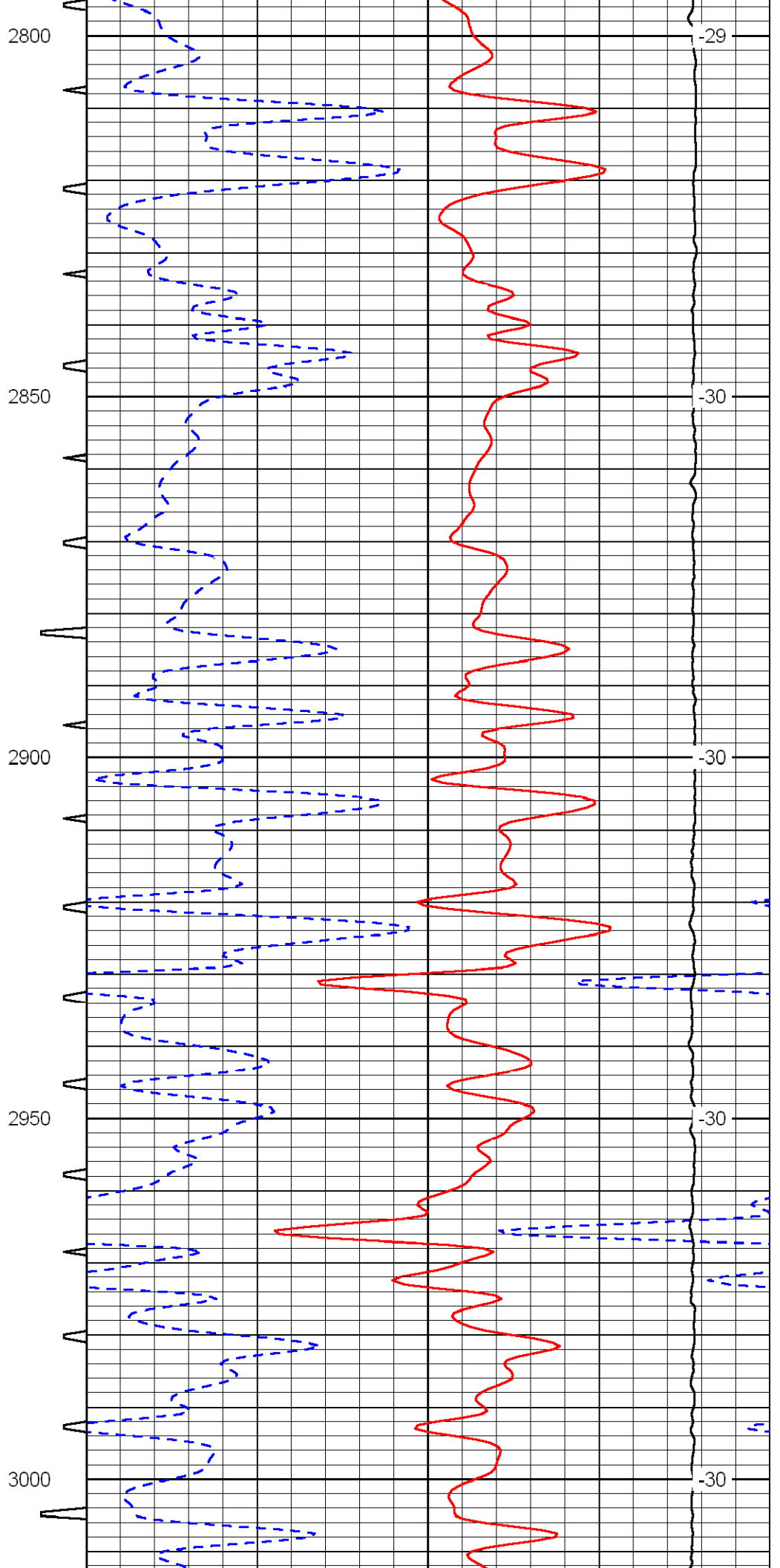
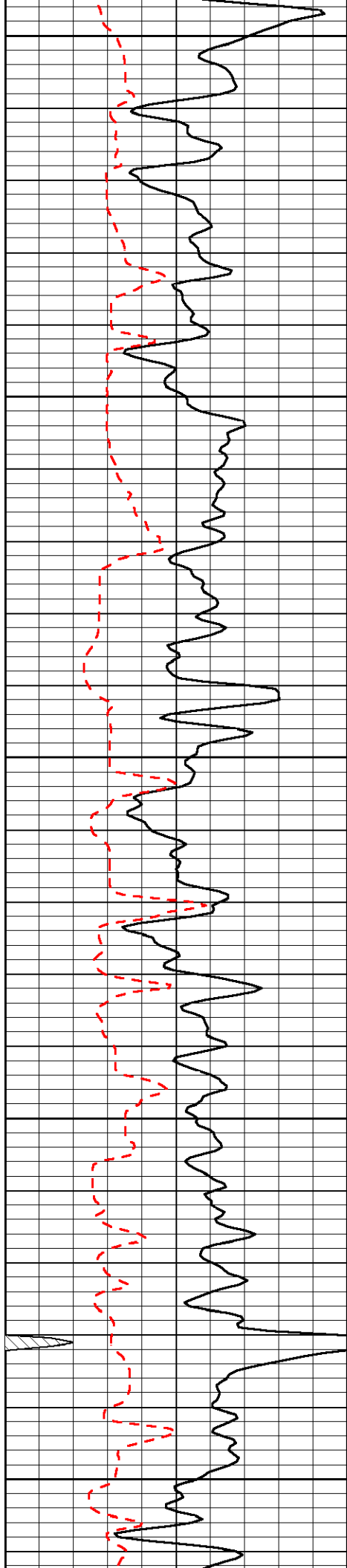
-74

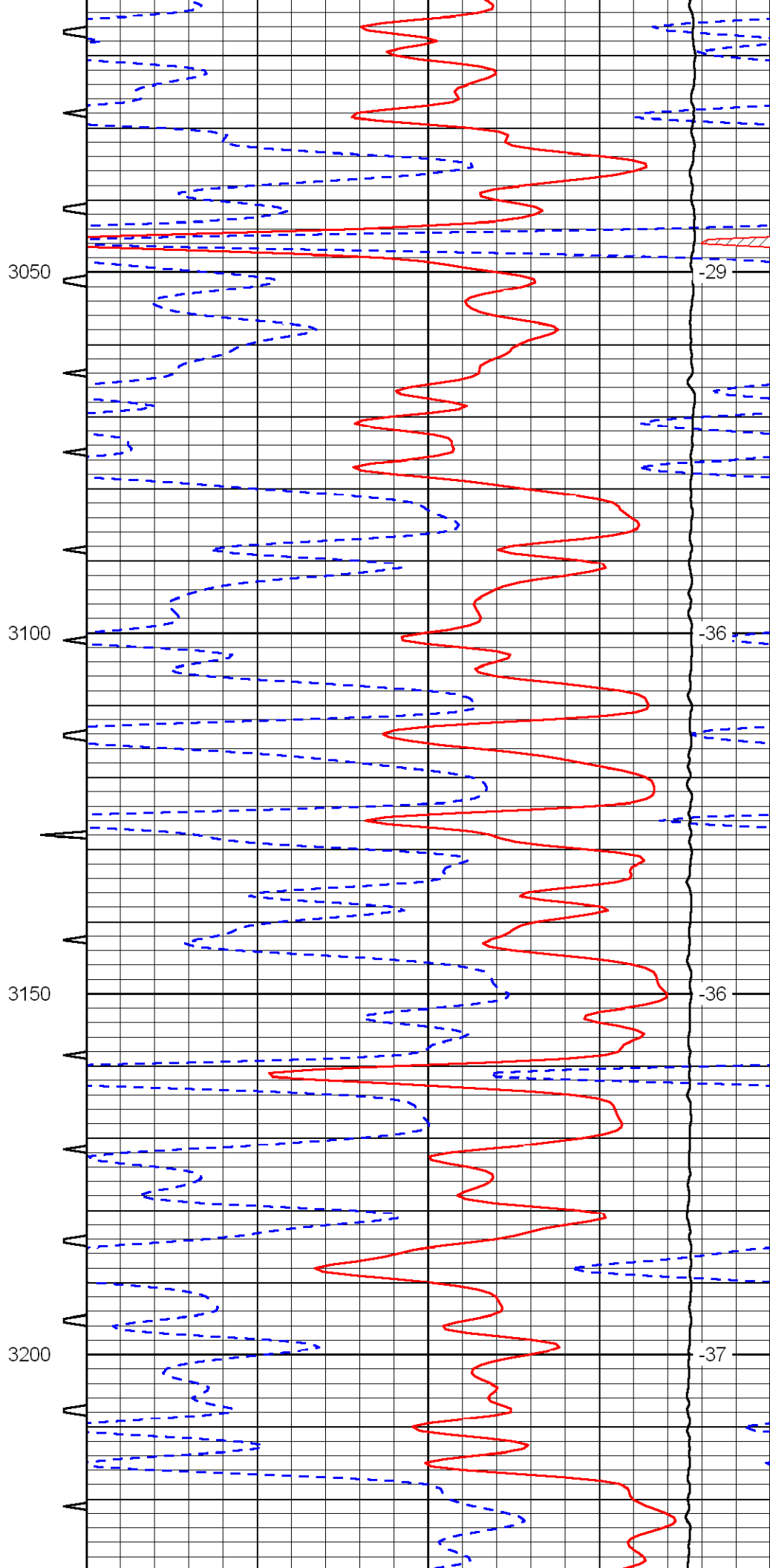
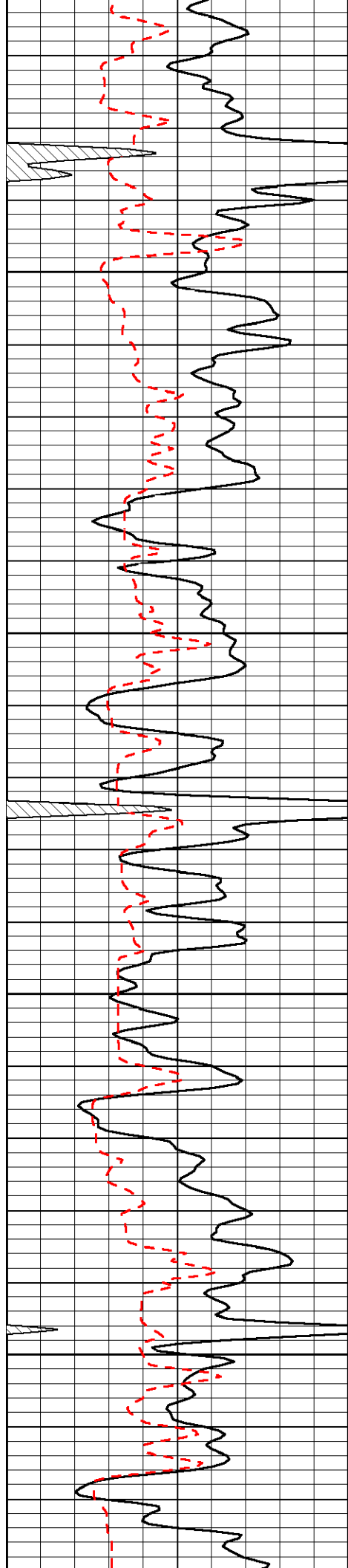
2700

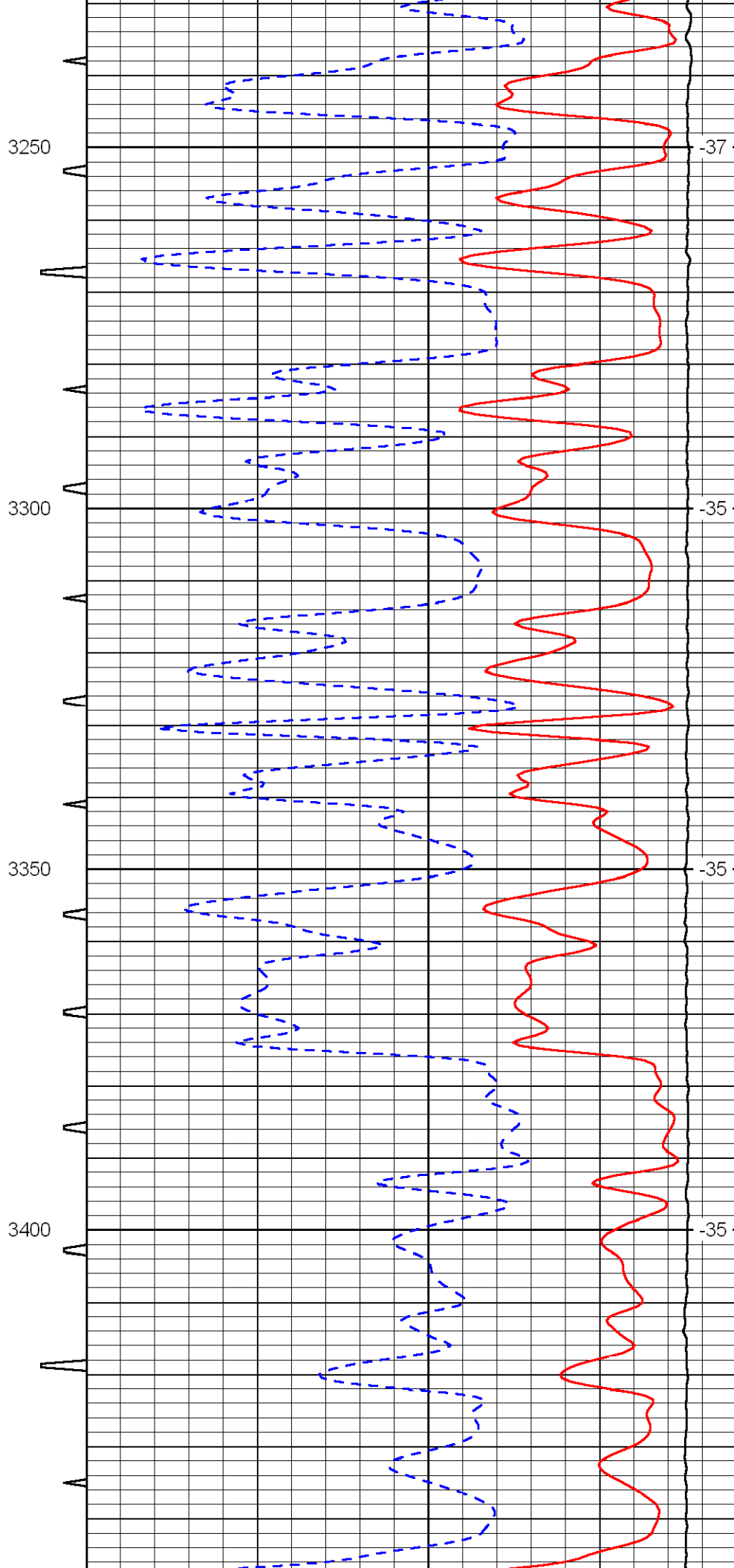
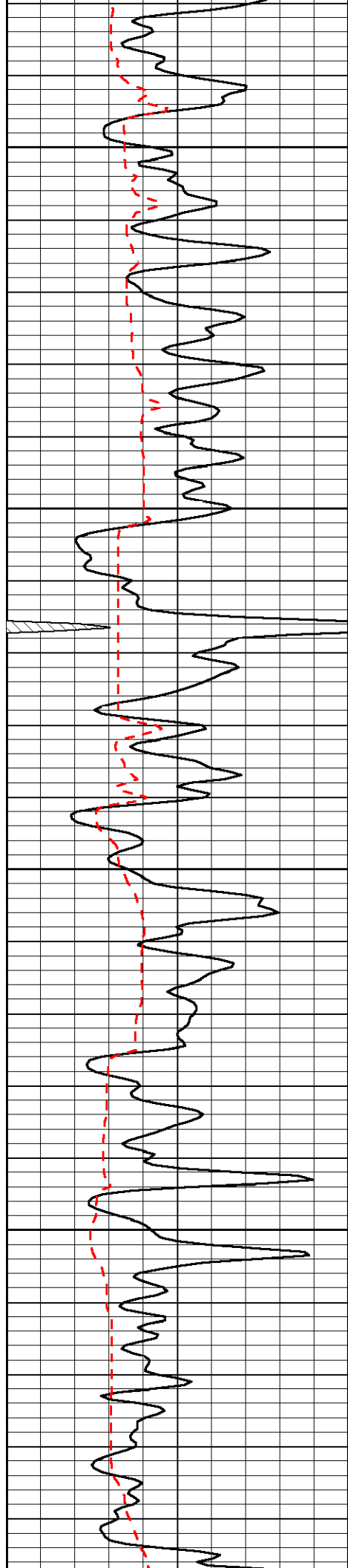
-74

2750

-72







-37

-35

-35

-35

