



Microresistivity Log

DIGITAL LOG (785) 625-3858

API No. 15-187-21,147-00-00	Company Berexco, Inc.	Location 335' FNL & 932' FWL
	Well Seyb No. 1-29	Other Services CNL/CDL DIL/BHCS
	Field Wildcat	
	County Stanton	Elevation K.B. 3564 D.F. 3551 G.L.
	State Kansas	
	Sec: 29	
	Twp: 29S	
	Rge: 42W	
Permanent Datum Log Measured From Drilling Measured From	Ground Level Kelly Bushing Frotkelly Bushing	Elevation 3551 13 Ft. Above Perm. Datum

Date	02/27/2009
Run Number	Two
Depth Driller	5780
Depth Logger	5778
Bottom Logged Interval	5777
Top Log Interval	2800
Casing Driller	8.625 @ 1582
Casing Logger	1574
Bit Size	7.875
Type Fluid in Hole	Chemical
Salinity, ppm CL	700
Density / Viscosity	9.2 58
pH / Fluid Loss	10.0 6.4
Source of Sample	Flowline
Rm @ Meas. Temp	1.9 @ 65
Rmf @ Meas. Temp	1.42 @ 65
Rmc @ Meas. Temp	2.56 @ 65
Source of Rmf / Rmc	Charts
Rm @ BHT	.91 @ 136
Operating Rig Time	6 Hours
Max Rec. Temp. F	136
Equipment Number	10
Location	Hays
Recorded By	Jason Wellbrock
Witnessed By	Byron Bynog

<<< Fold Here >>>

All interpretations are opinions based on inferences from electrical or other measurements and we cannot and do not guarantee the accuracy or correctness of any interpretation, and we shall not, except in the case of gross or willful negligence on our part, be liable or responsible for any loss, costs, damages, or expenses incurred or sustained by anyone resulting from any interpretation made by any of our officers, agents or employees. These interpretations are also subject to our general terms and conditions set out in our current Price Schedule.

Comments

Thank you for using Log-Tech, Inc.
(785) 625-3858

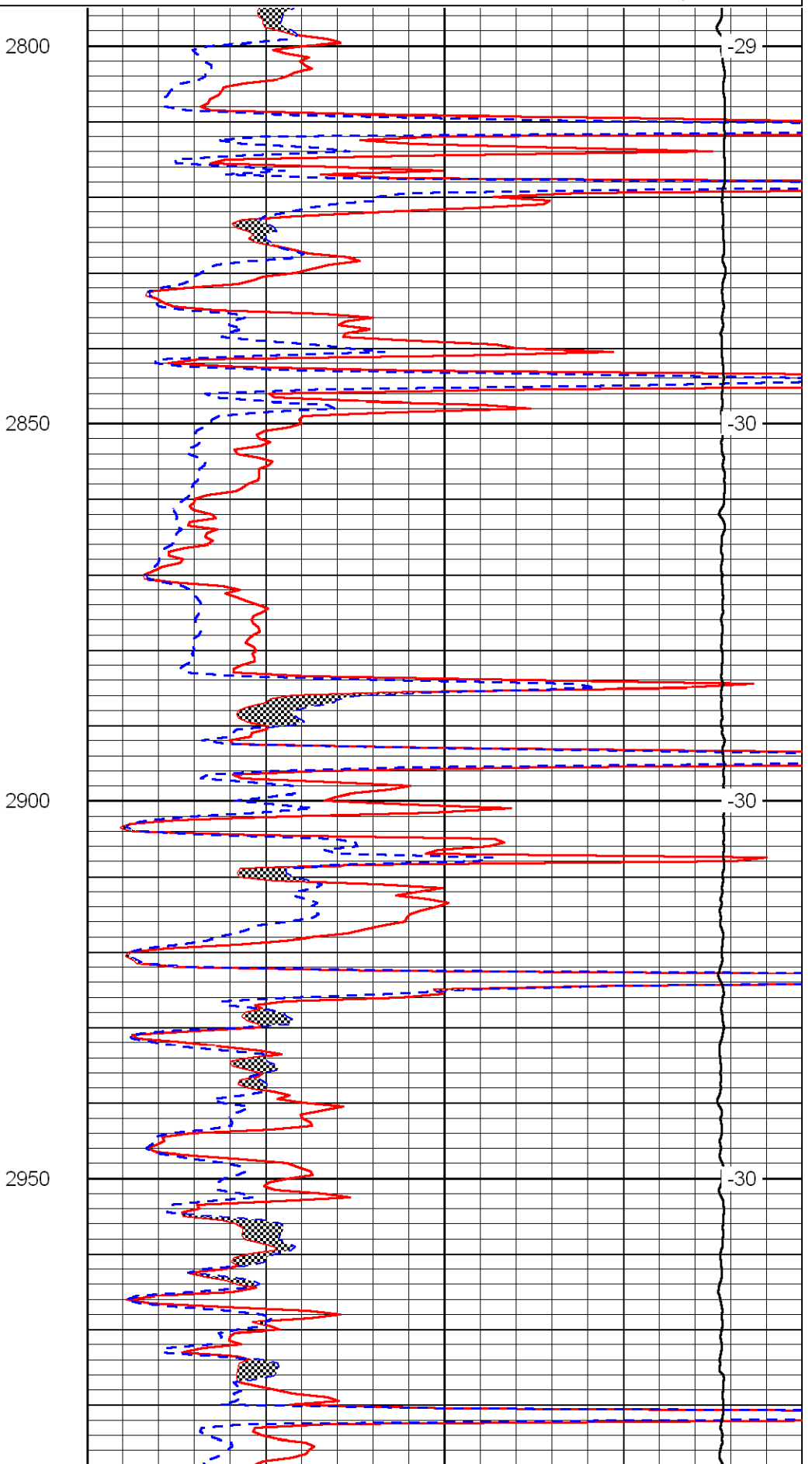
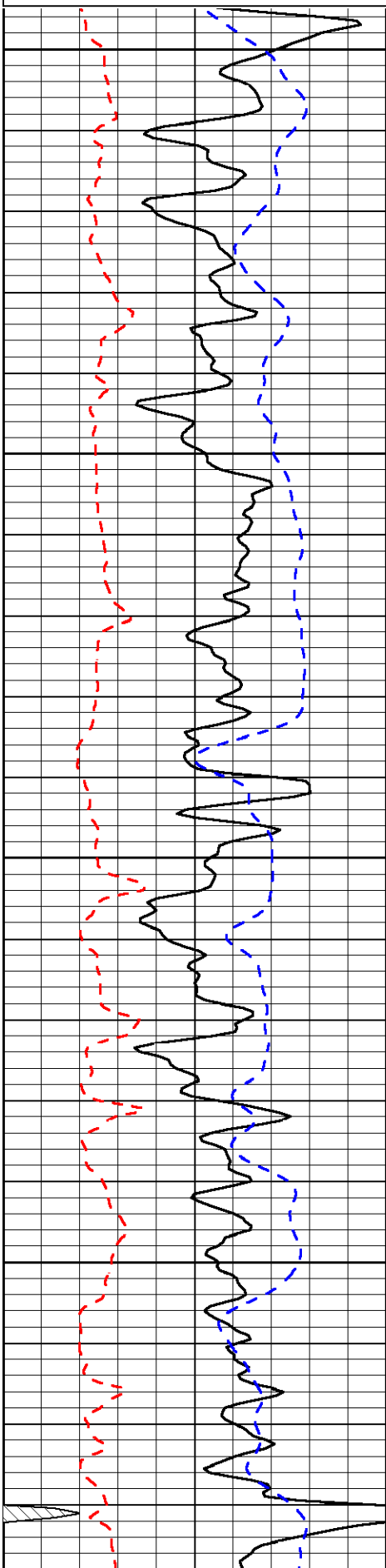
Mantor W 3, N Into

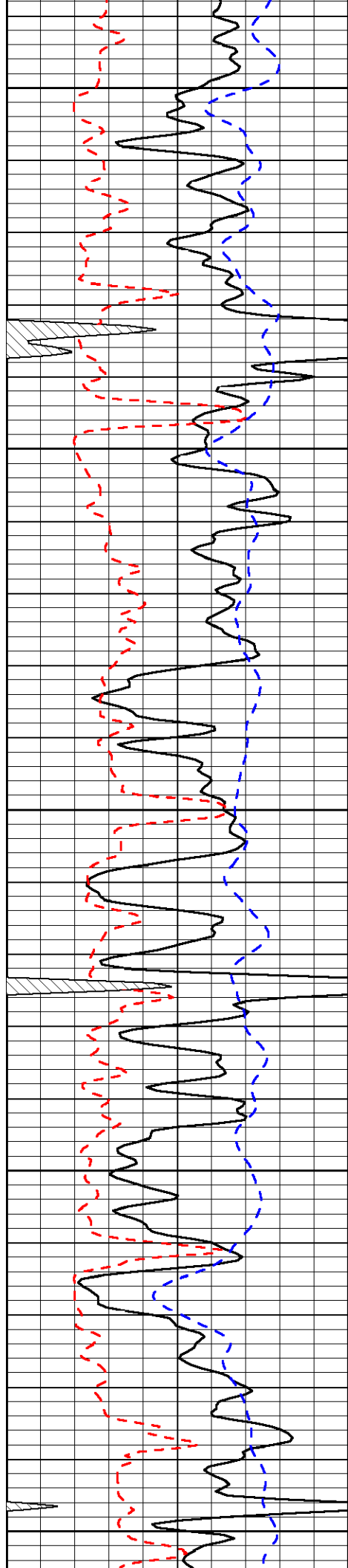
Database File: c:\warrior\data\berexco_seyb no. 1-29\berexhd.db
 Dataset Pathname: dil/ber2in
 Presentation Format: micro
 Dataset Creation: Fri Feb 27 15:22:42 2009
 Charted by: Depth in Feet scaled 1:240

0	Gamma Ray	150
6	Micro Log Caliper (in)	16
-200	SP (MV)	0

0	Micro Inverse 1 X 1 (Ohm-m)	40
0	Micro Normal 2" (Ohm-m)	40
10000	Line Weight (lb)	0

LSPD
(ft/min)





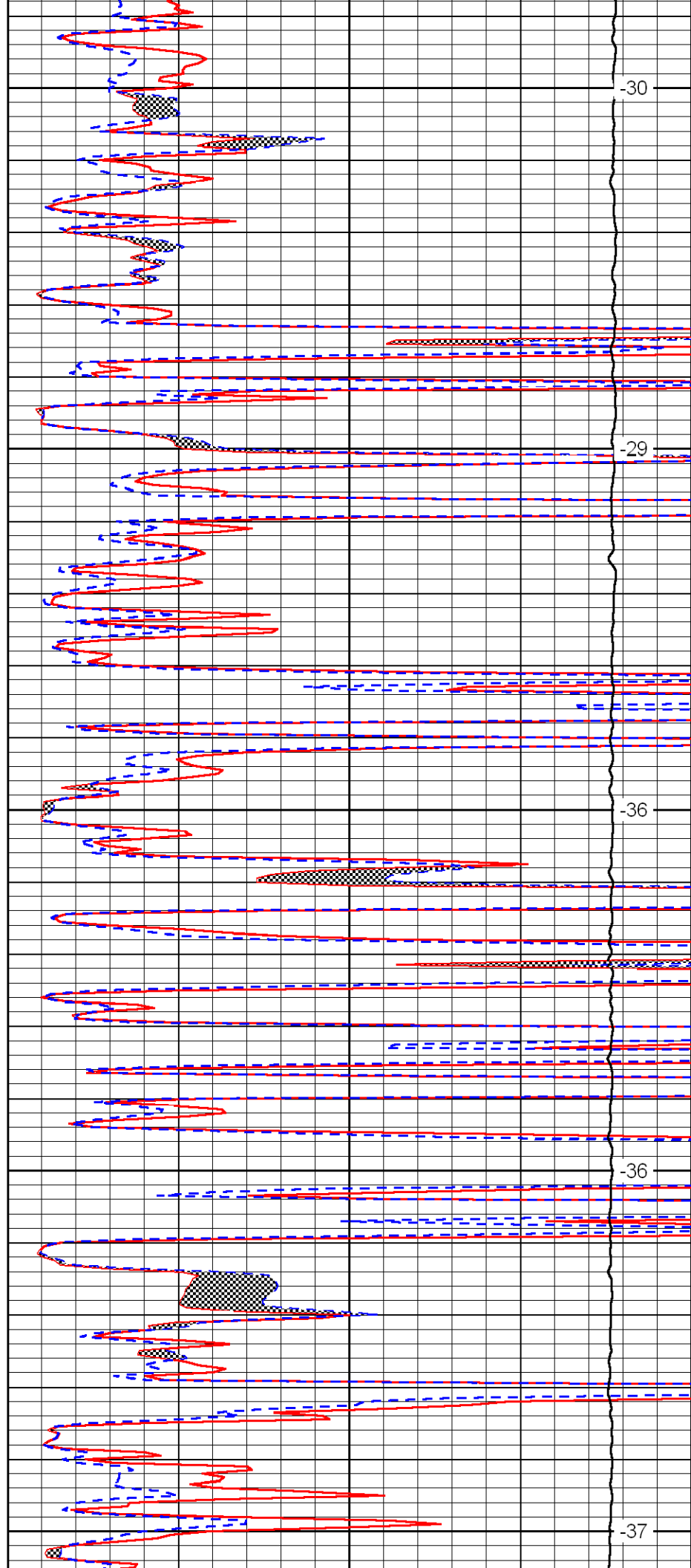
3000

3050

3100

3150

3200



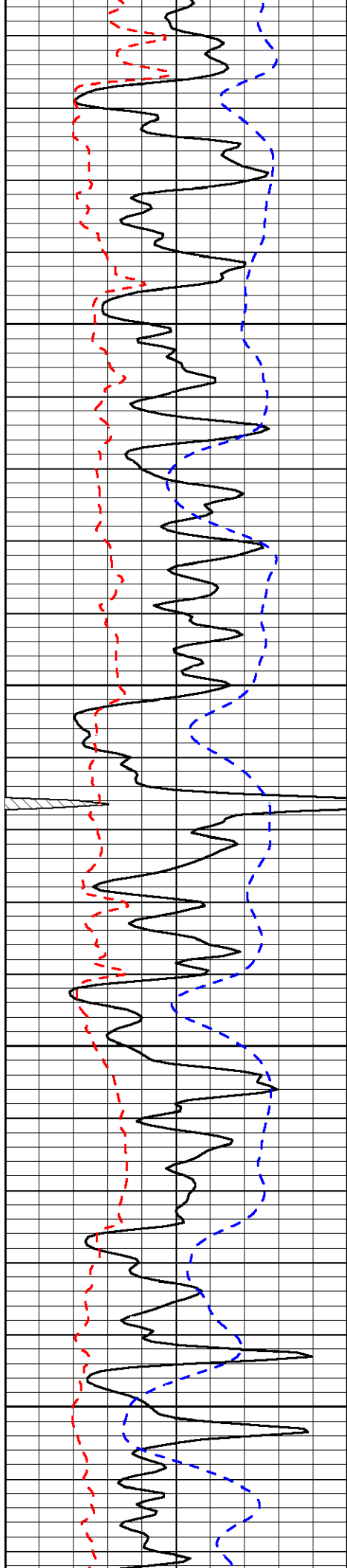
-30

-29

-36

-36

-37

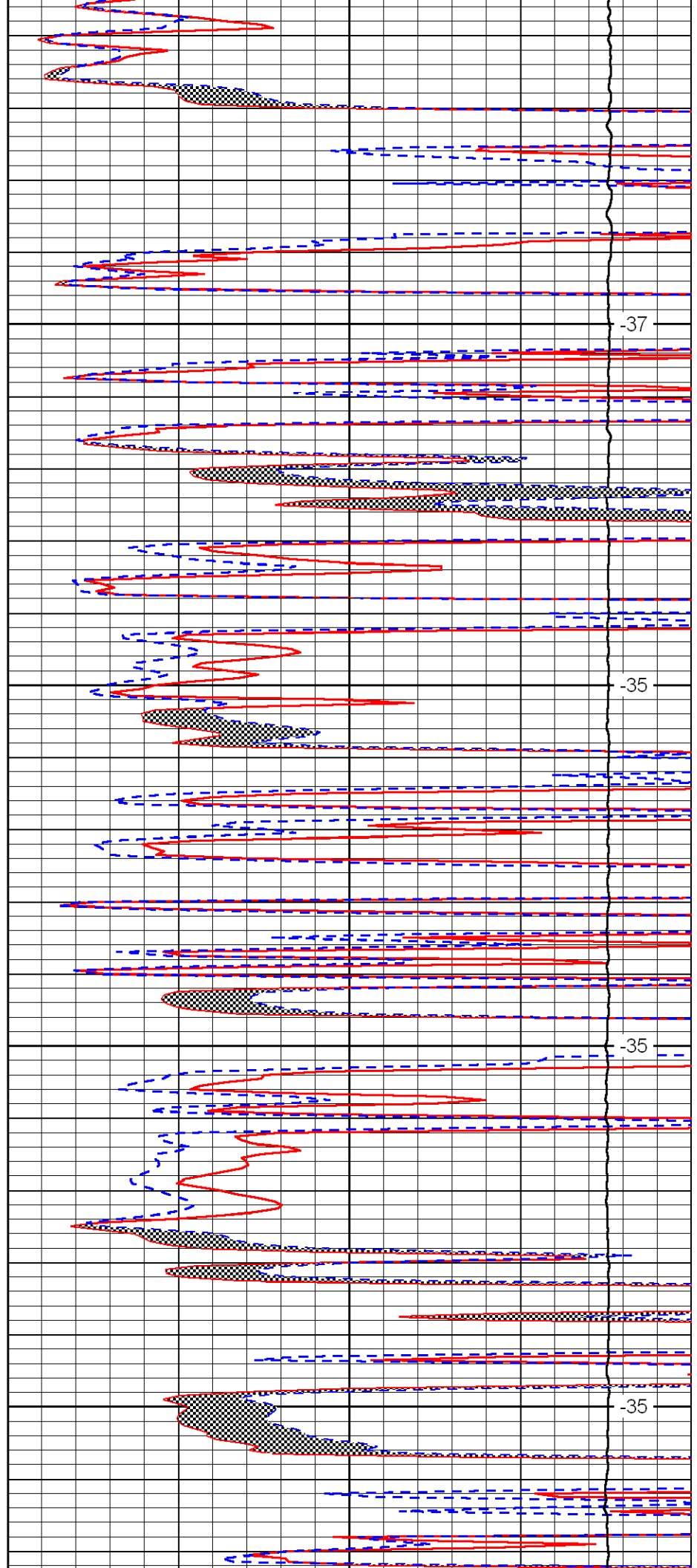


3250

3300

3350

3400

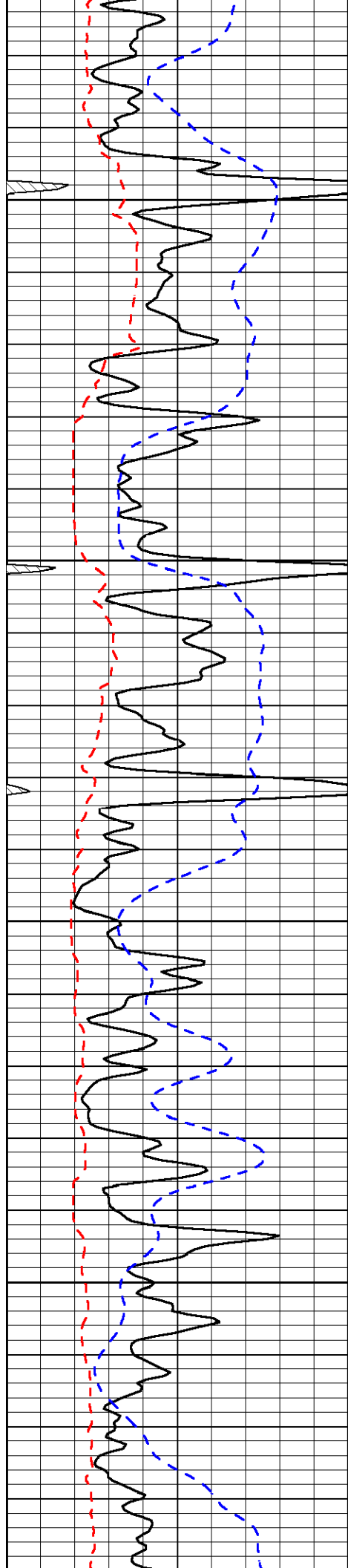


-37

-35

-35

-35

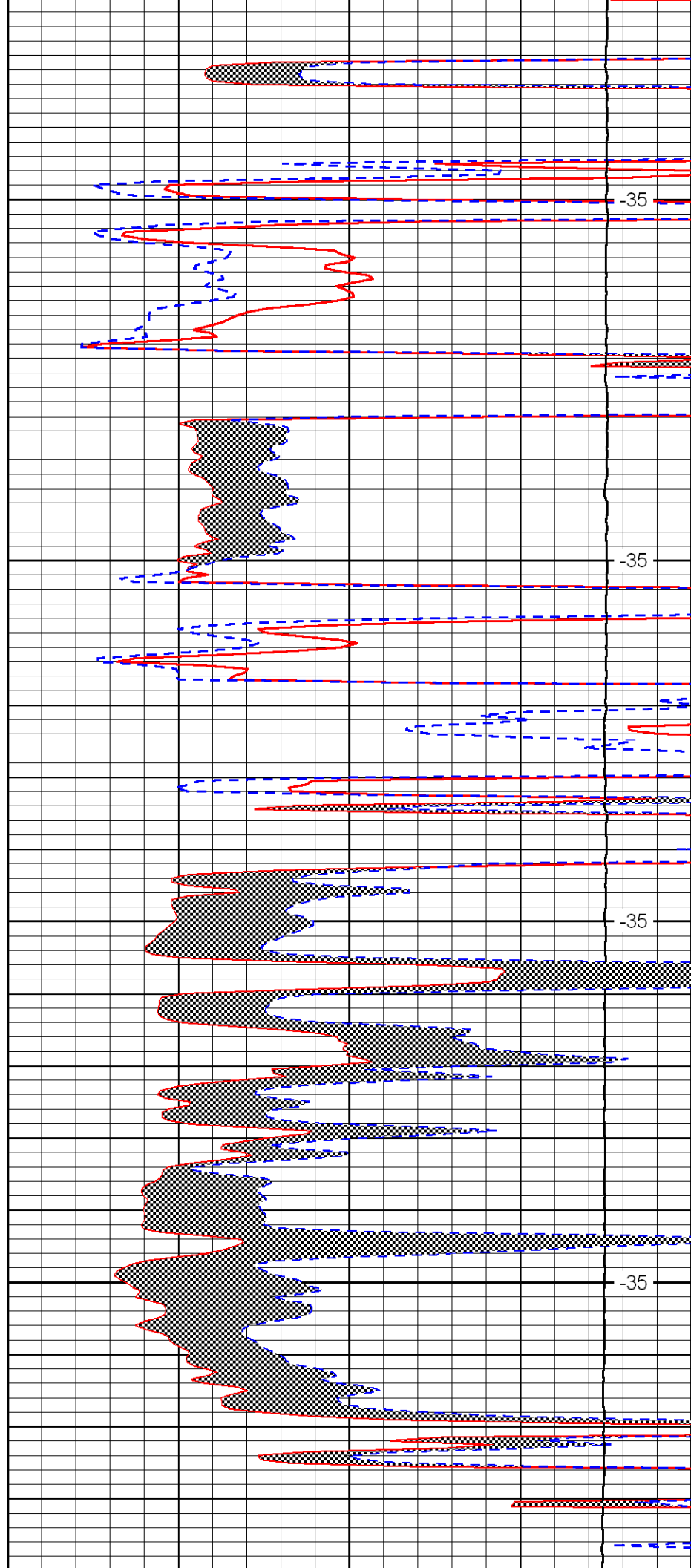


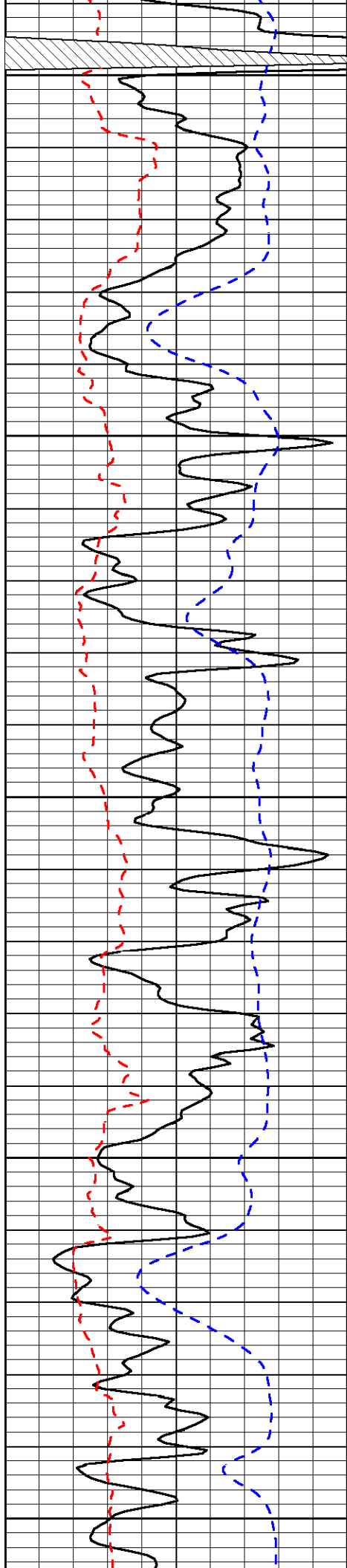
3450

3500

3550

3600





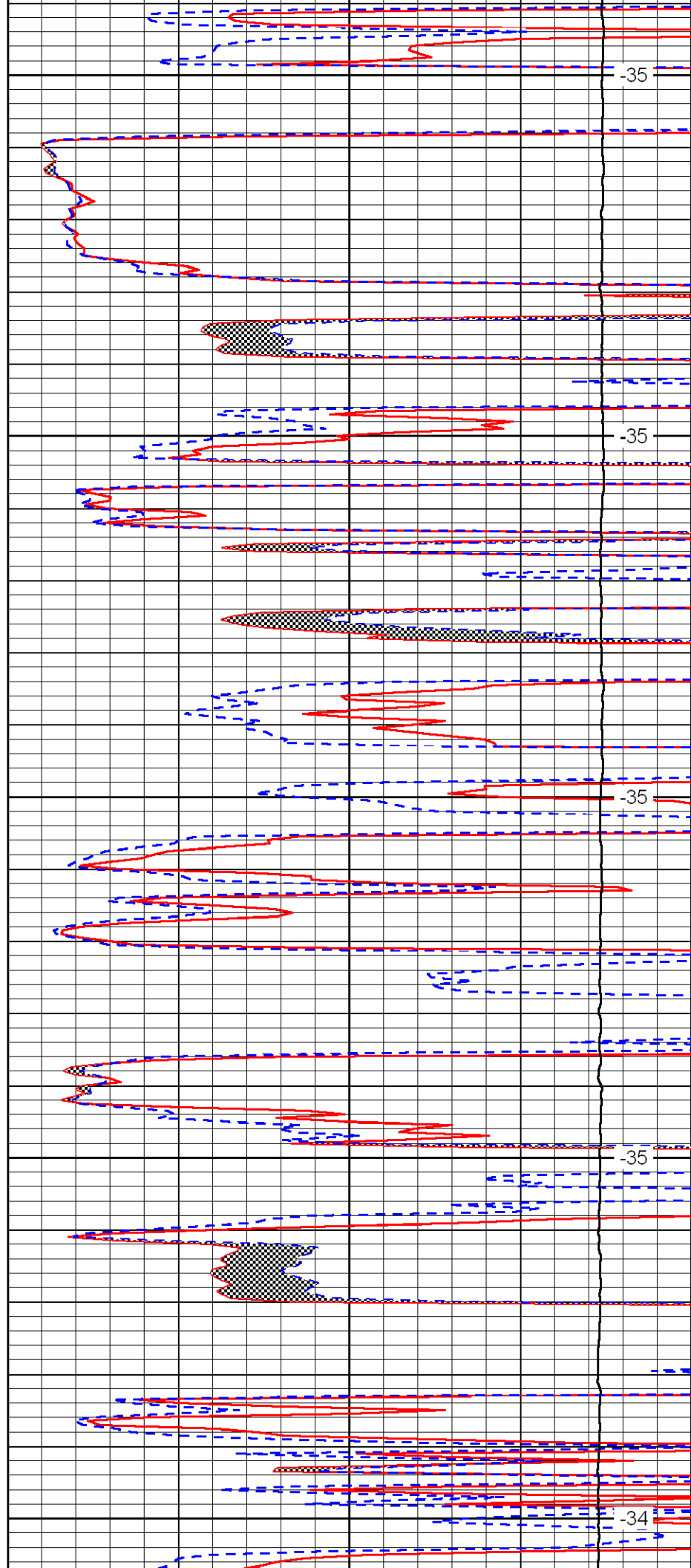
3650

3700

3750

3800

3850



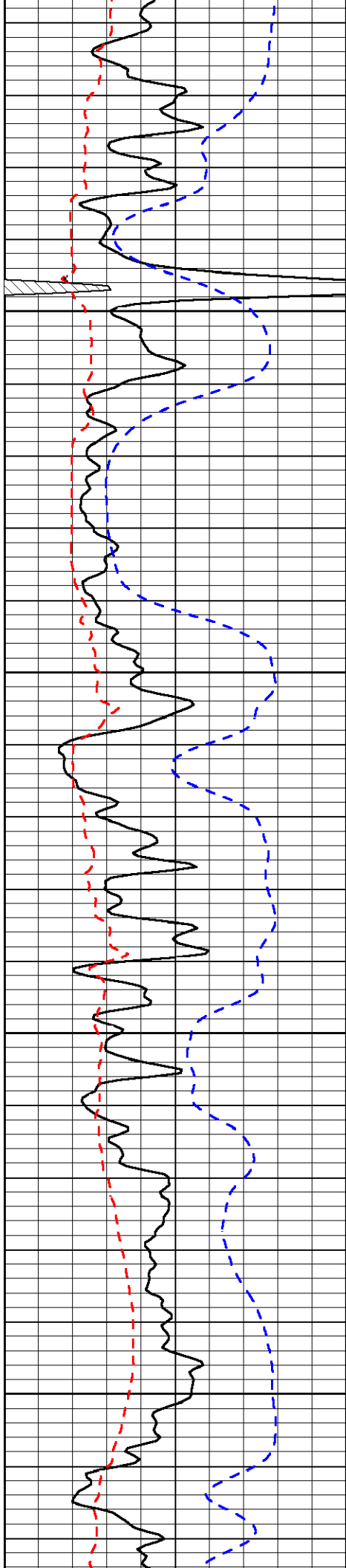
-35

-35

-35

-35

-34

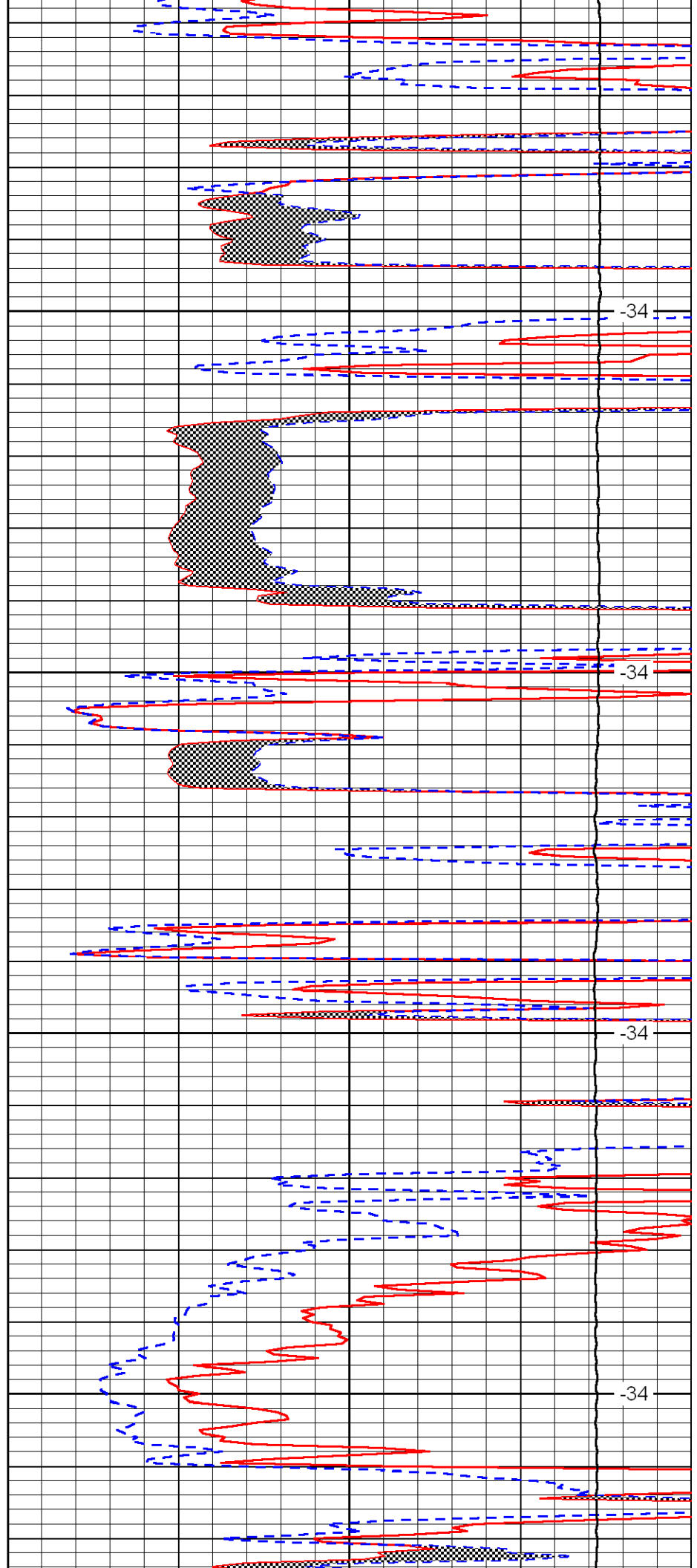


3900

3950

4000

4050

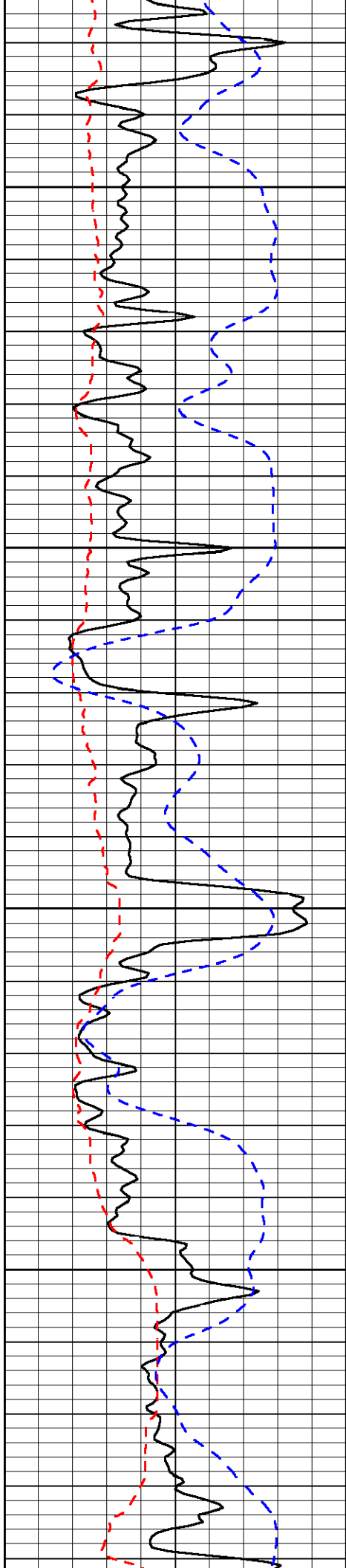


-34

-34

-34

-34

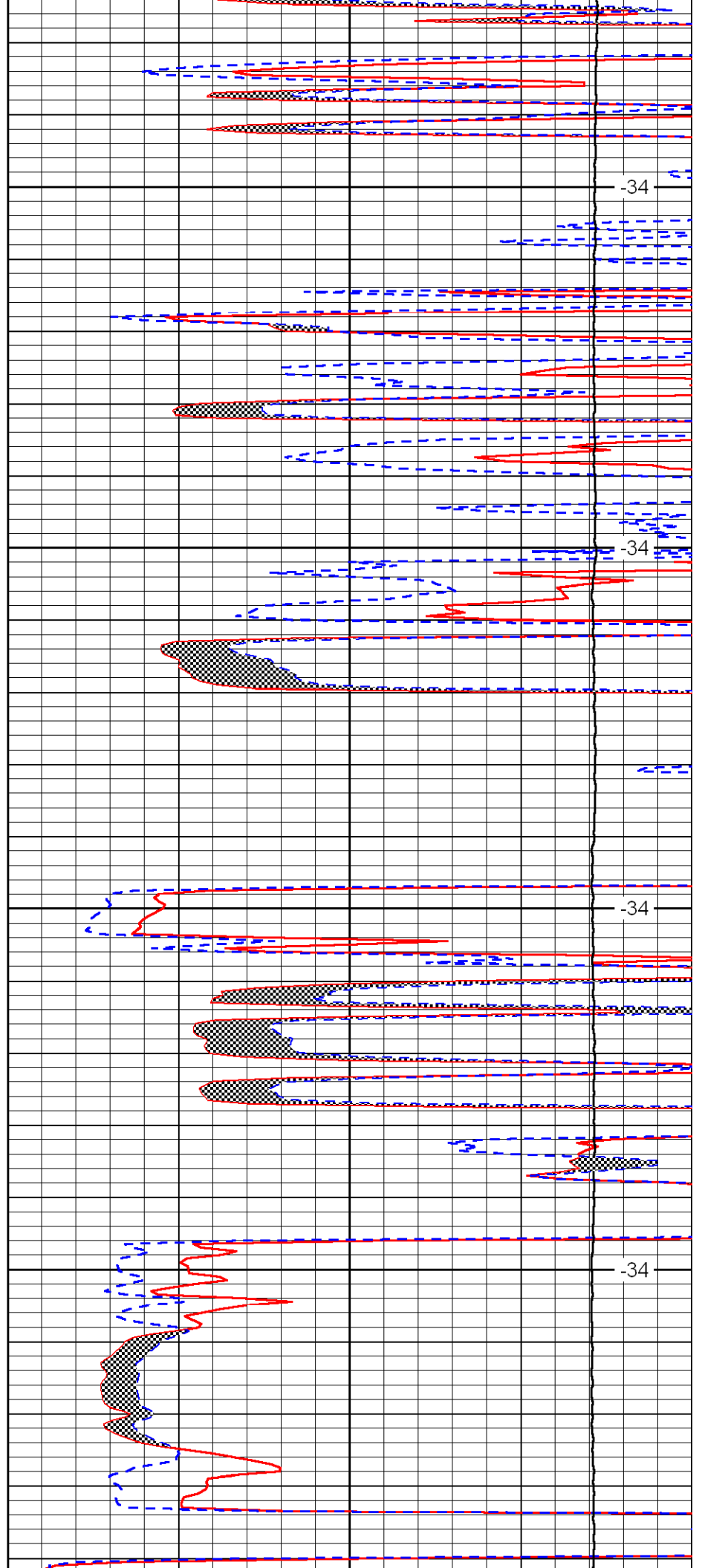


4100

4150

4200

4250

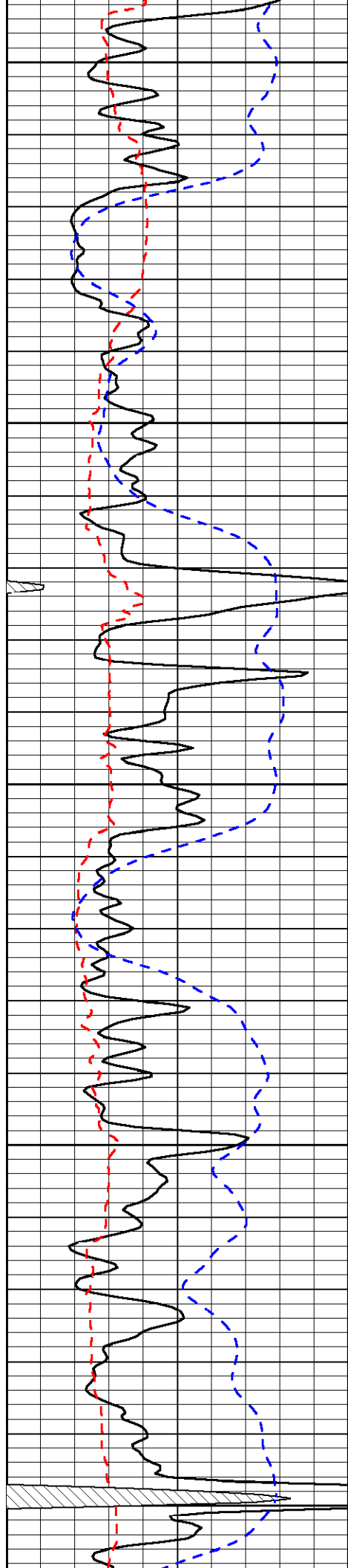


-34

-34

-34

-34



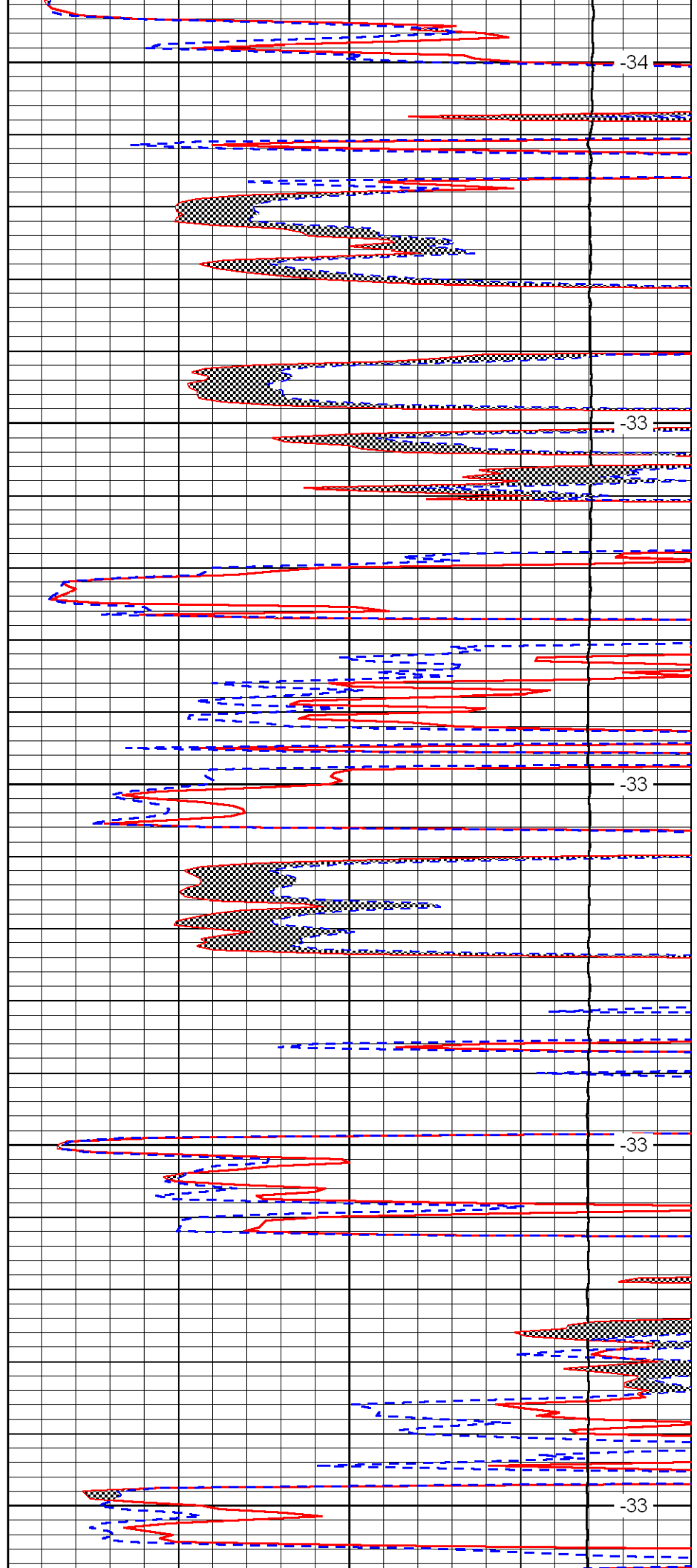
4300

4350

4400

4450

4500



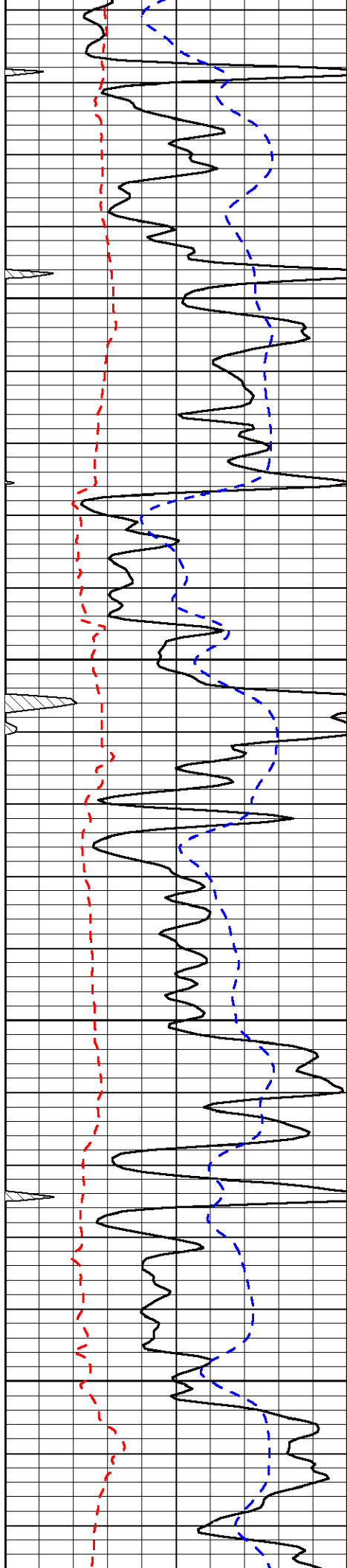
-34

-33

-33

-33

-33

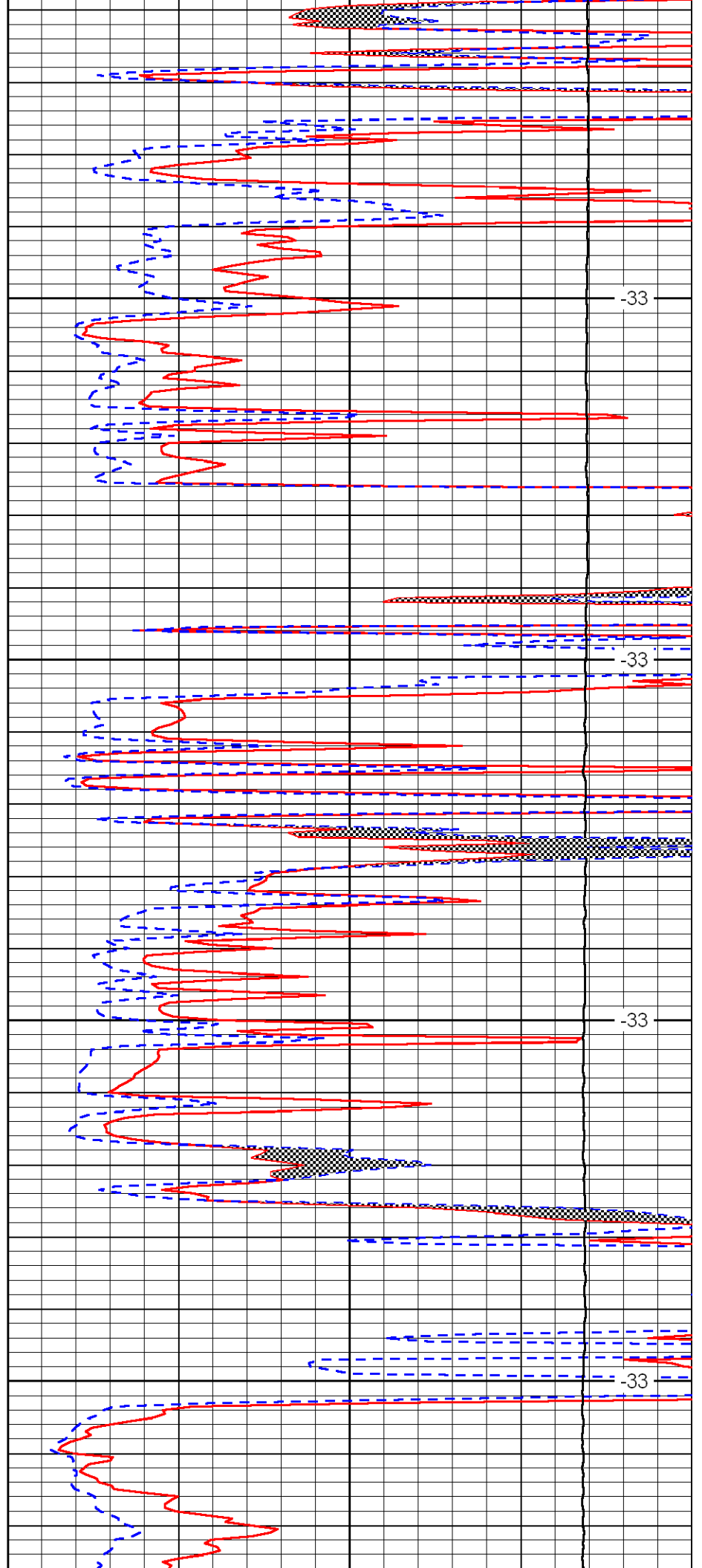


4550

4600

4650

4700

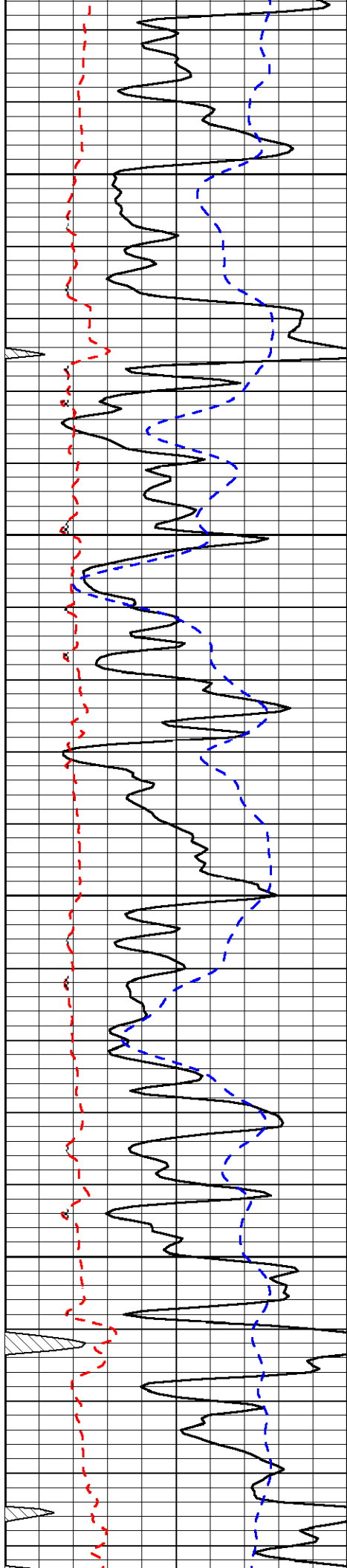


-33

-33

-33

-33

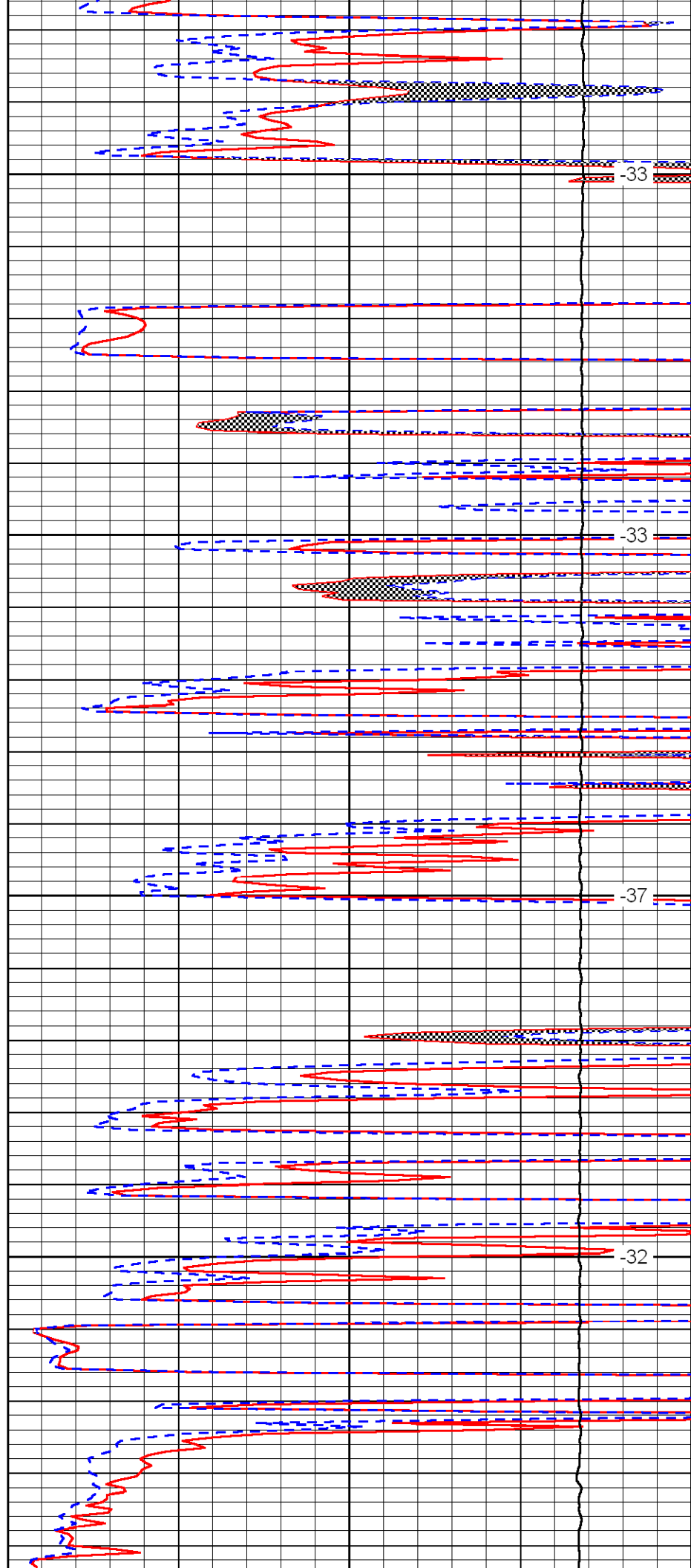


4750

4800

4850

4900

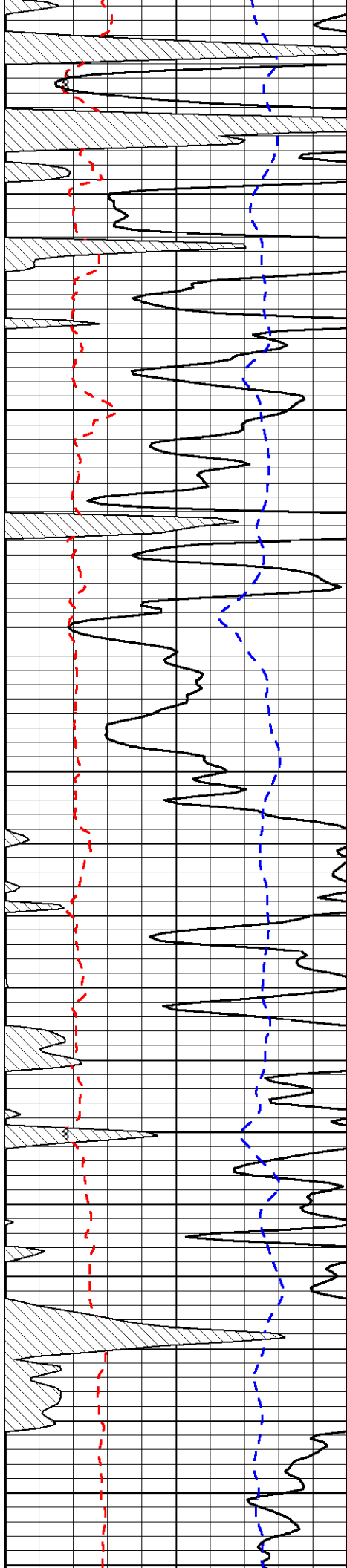


-33

-33

-37

-32



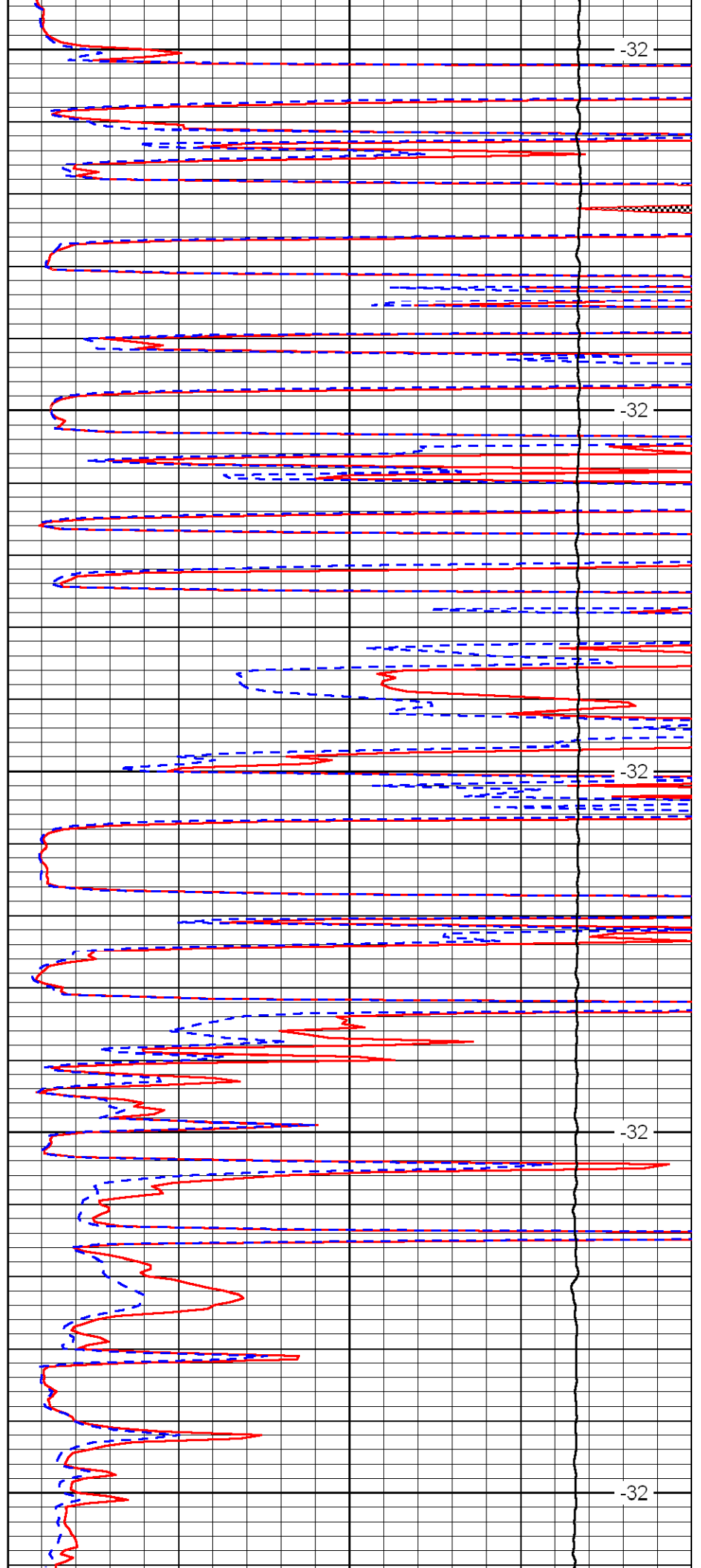
4950

5000

5050

5100

5150



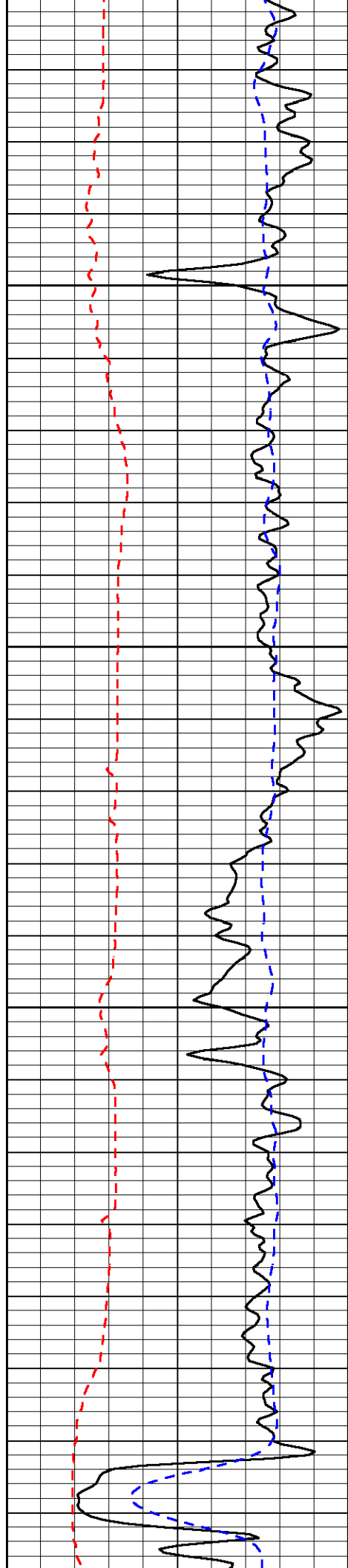
-32

-32

-32

-32

-32



5200

5250

5300

5350

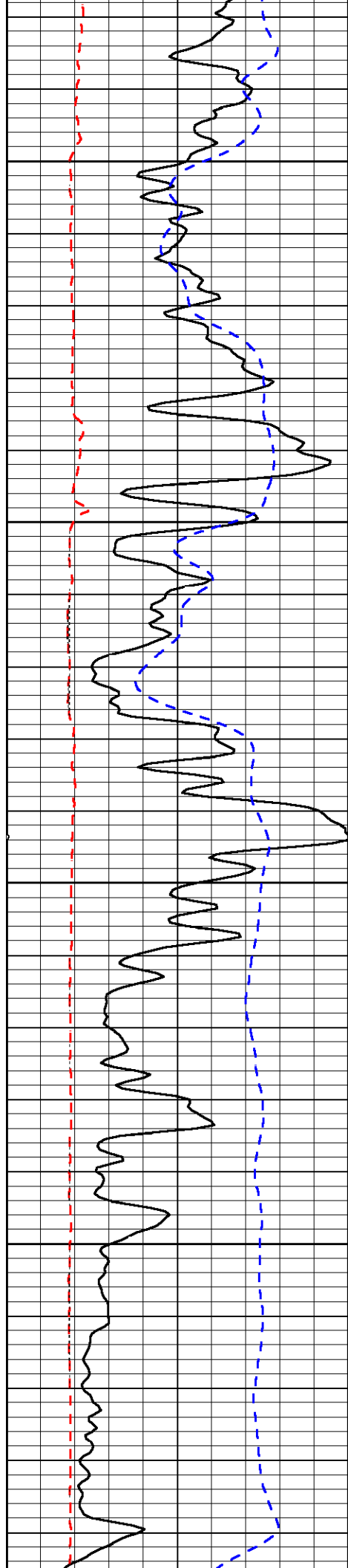


-32

-32

-32

-32

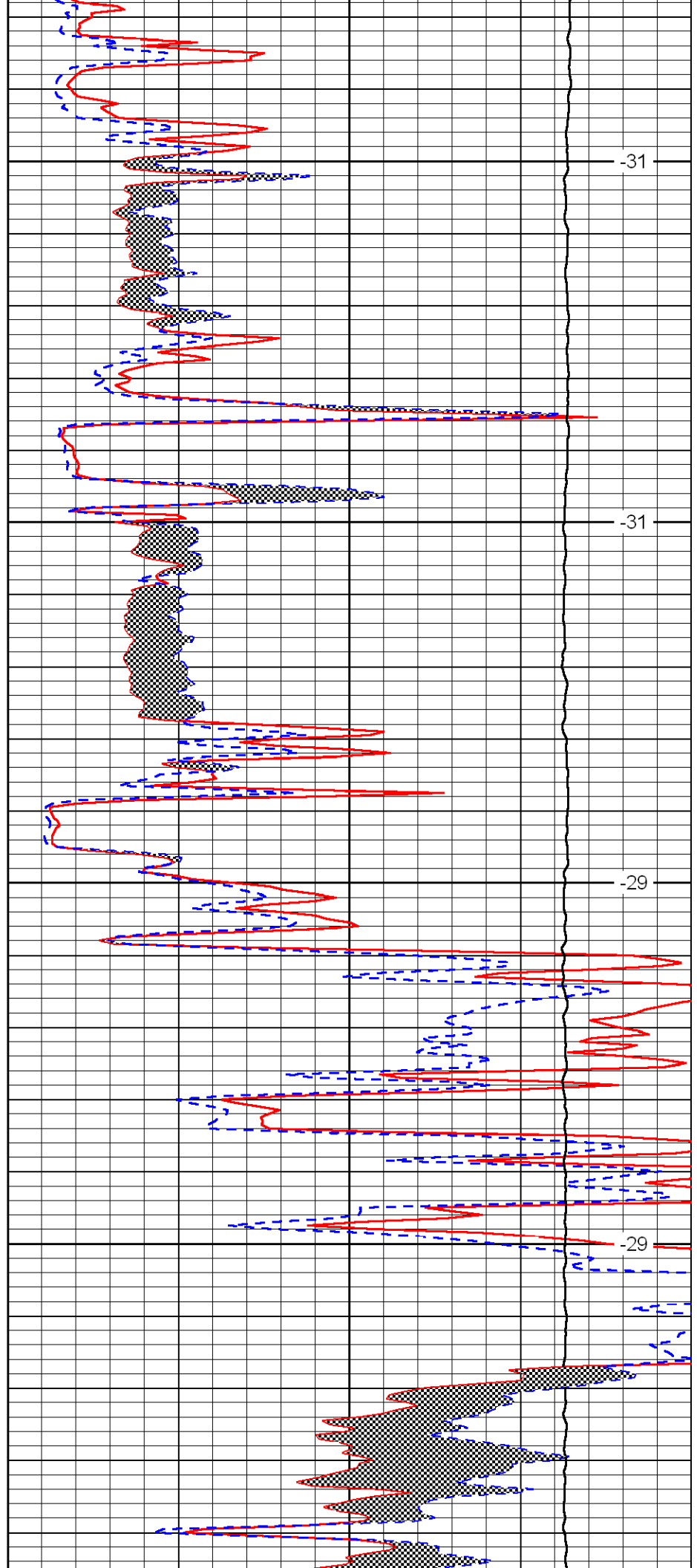


5400

5450

5500

5550

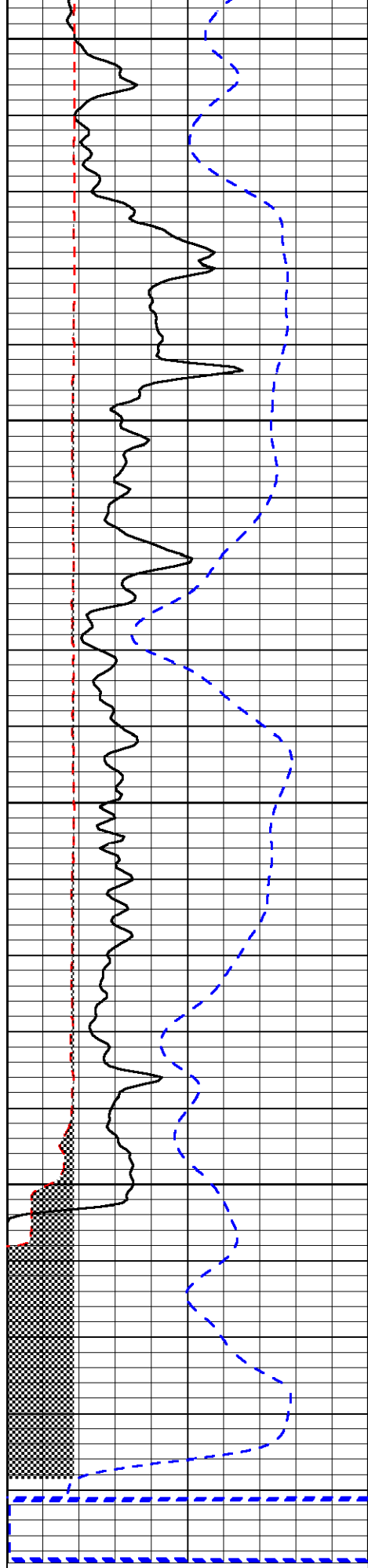


-31

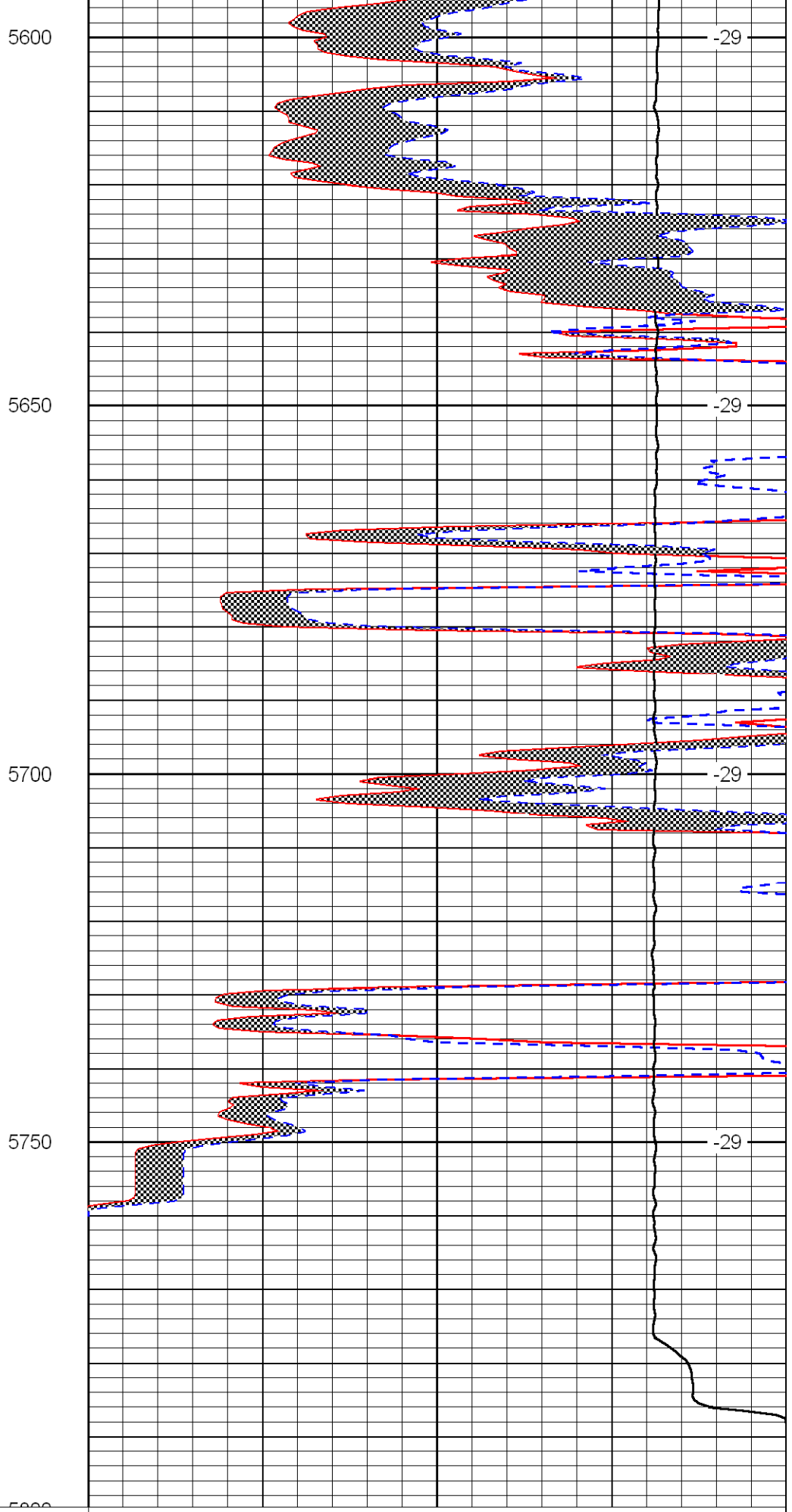
-31

-29

-29



0	Gamma Ray	150
6	Micro Log Caliper (in)	16
-200	SP (MV)	0



0	Micro Inverse 1 X 1 (Ohm-m)	40
0	Micro Normal 2'' (Ohm-m)	40
10000	Line Weight (lb)	0

_____ (ft/min)

_____ (ft/min)

LSPD
(ft/min)