



Dual Induction Log

DIGITAL LOG

(785) 625-3858

API No.

15-187-21,147-00-00

Company **Berexco, Inc.**

Well **Seyb No. 1-29**

Field **Wildcat**

County **Stanton**

State

Kansas

Location **335' FNL & 932' FWL**

Sec: **29** Twp: **29S** Rge: **42W**

Other Services
CNL/CDL
MEL/BHCS

Permanent Datum **Ground Level** Elevation **3551**

Log Measured From **Kelly Bushing** 13 Ft. Above Perm. Datum

Drilling Measured From **Kelly Bushing**

Elevation
K.B. 3564
D.F. 3551
G.L. 3551

Date **02/27/2009**

Run Number **One**

Depth Driller **5780**

Depth Logger **5778**

Bottom Logged Interval **5777**

Top Log Interval **0**

Casing Driller **8.625 @ 1582**

Casing Logger **1574**

Bit Size **7.875**

Type Fluid in Hole **Chemical**

Salinity, ppm CL **700**

Density / Viscosity **9.2 58**

pH / Fluid Loss **10.0 6.4**

Source of Sample **Flowline**

Rm @ Meas. Temp **1.9 @ 65**

Rmf @ Meas. Temp **1.42 @ 65**

Rmc @ Meas. Temp **2.56 @ 65**

Source of Rmf / Rmc **Charts**

Rm @ BHT **.91 @ 136**

Operating Rig Time **6 Hours**

Max Rec. Temp. F **136**

Equipment Number **10**

Location **Hays**

Recorded By **Jason Wellbrock**

Witnessed By **Byron Bynog**

<<< Fold Here >>>

All interpretations are opinions based on inferences from electrical or other measurements and we cannot and do not guarantee the accuracy or correctness of any interpretation, and we shall not, except in the case of gross or willful negligence on our part, be liable or responsible for any loss, costs, damages, or expenses incurred or sustained by anyone resulting from any interpretation made by any of our officers, agents or employees. These interpretations are also subject to our general terms and conditions set out in our current Price Schedule.

Comments

Thank you for using Log-Tech, Inc.
(785) 625-3858

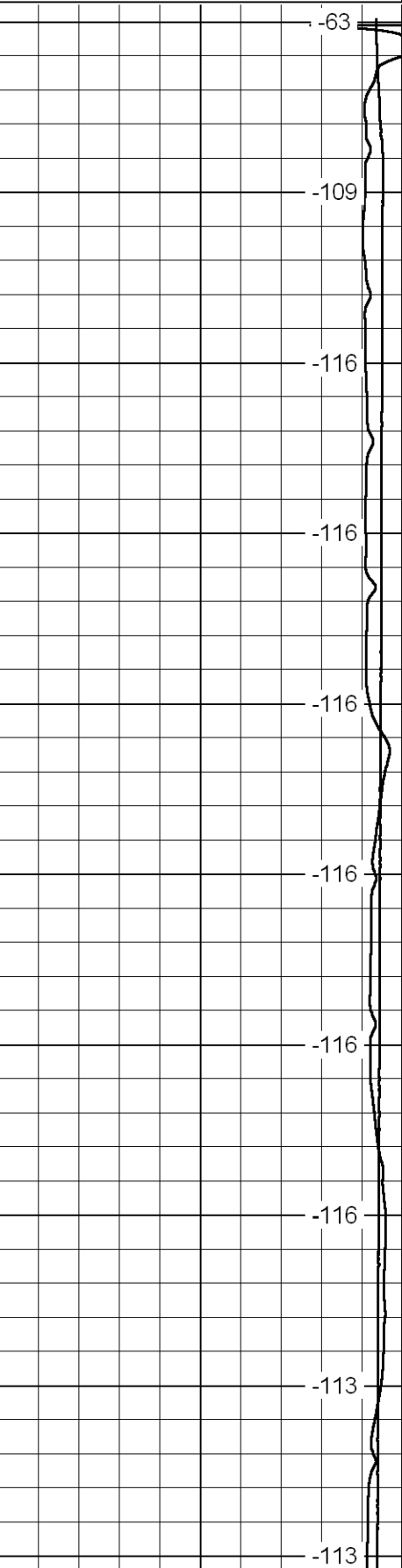
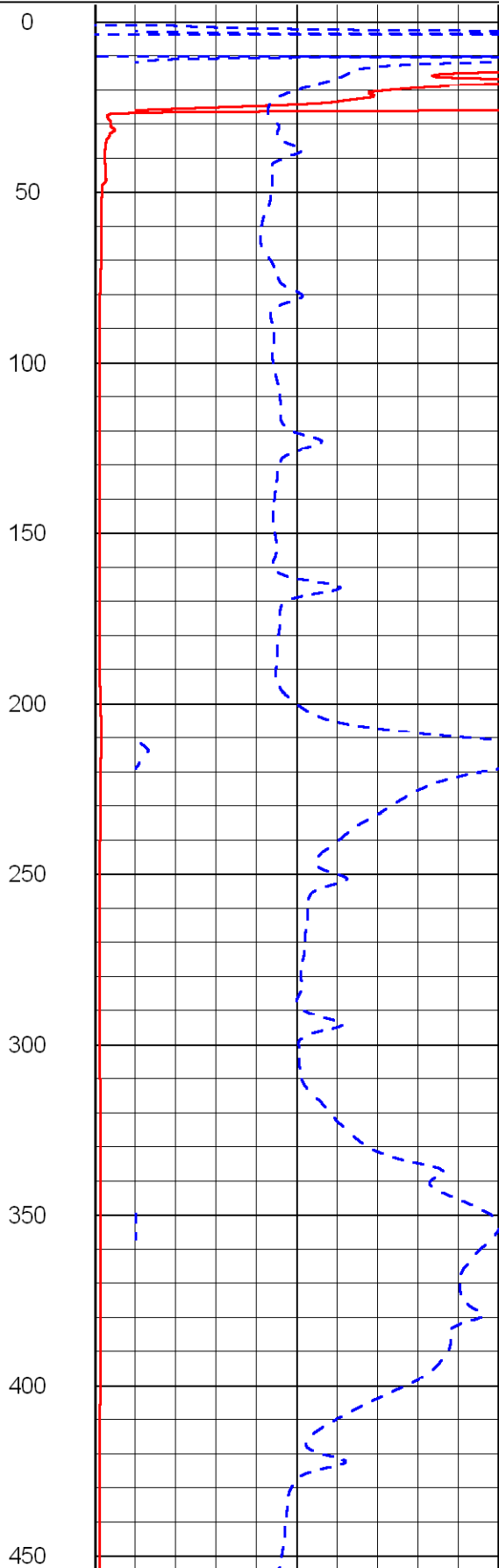
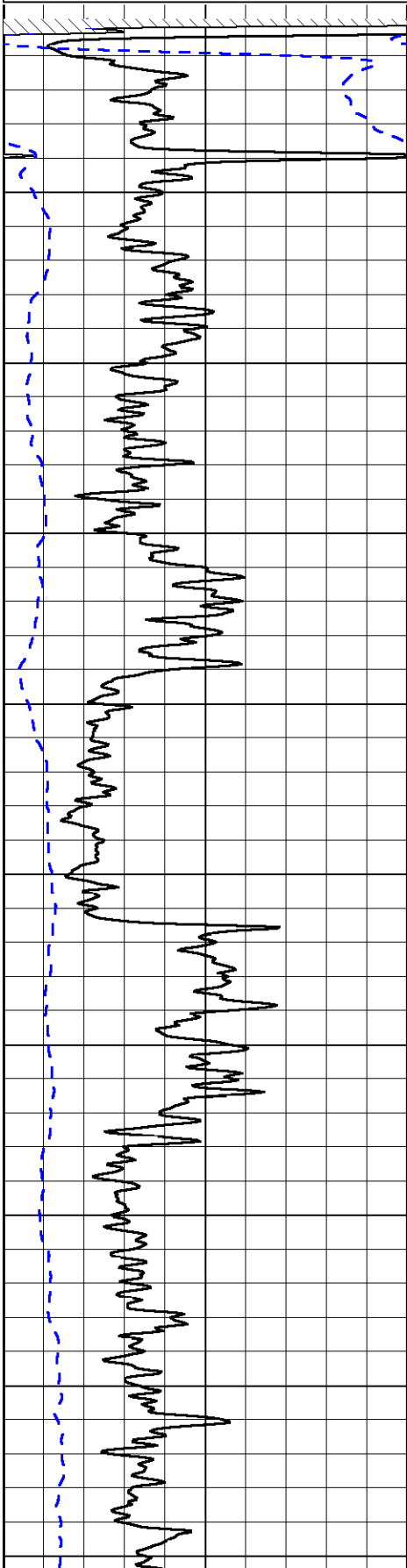
Mantor W 3, N Into

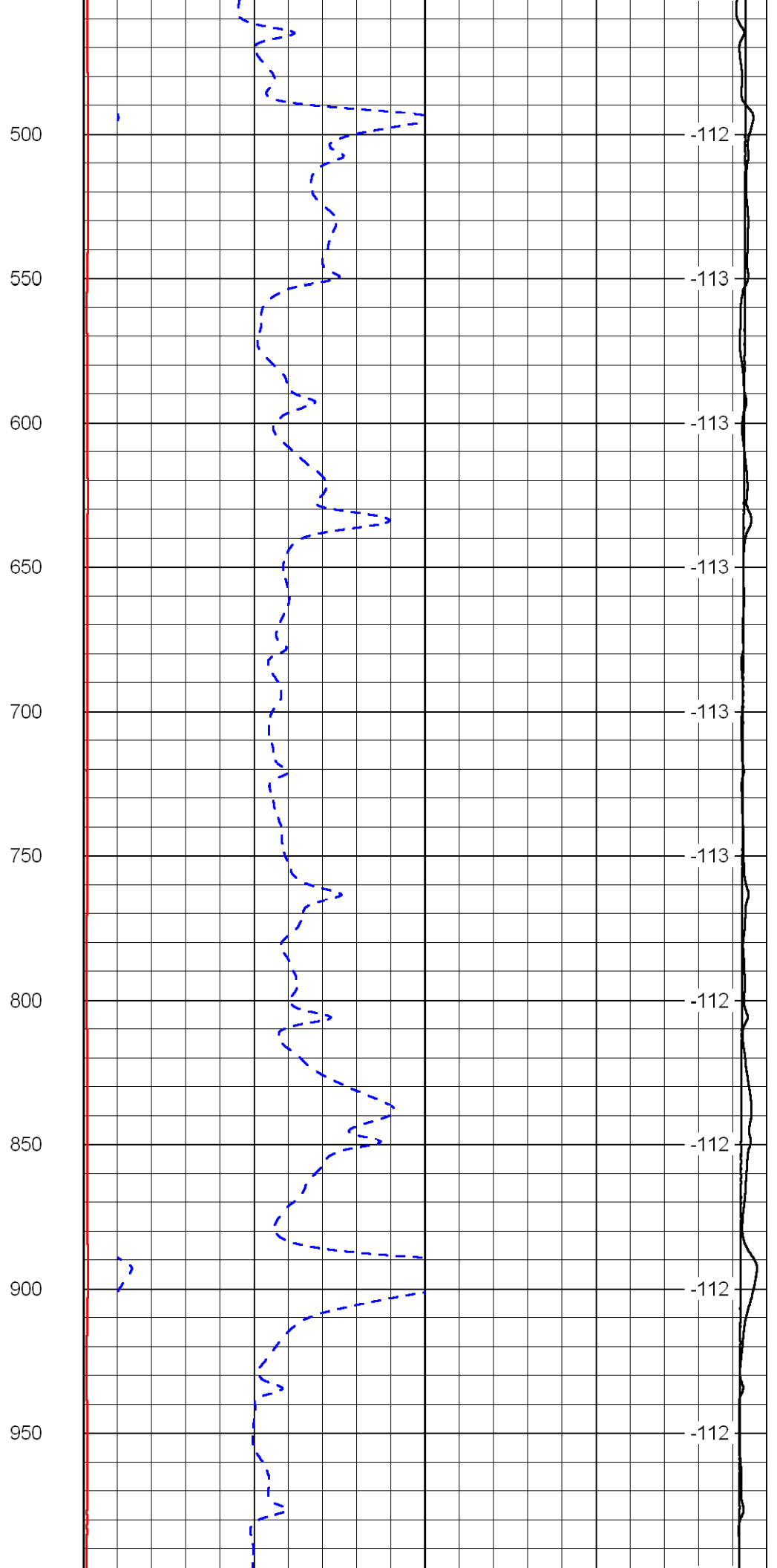
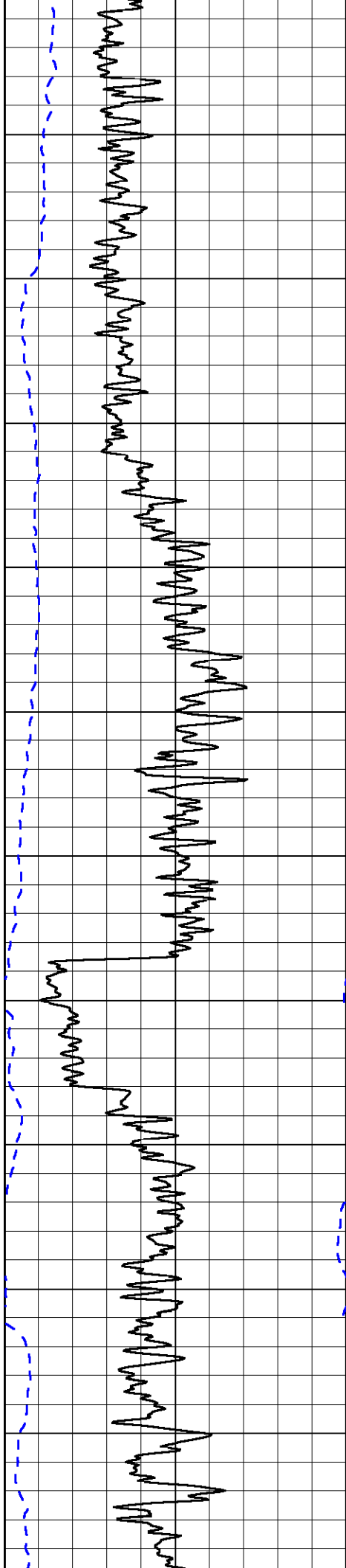
Database File: c:\warrior\data\berexco_seyb no. 1-29\berexhd.db
 Dataset Pathname: dil/ber2in
 Presentation Format: dil2in
 Dataset Creation: Fri Feb 27 15:22:42 2009
 Charted by: Depth in Feet scaled 1:600

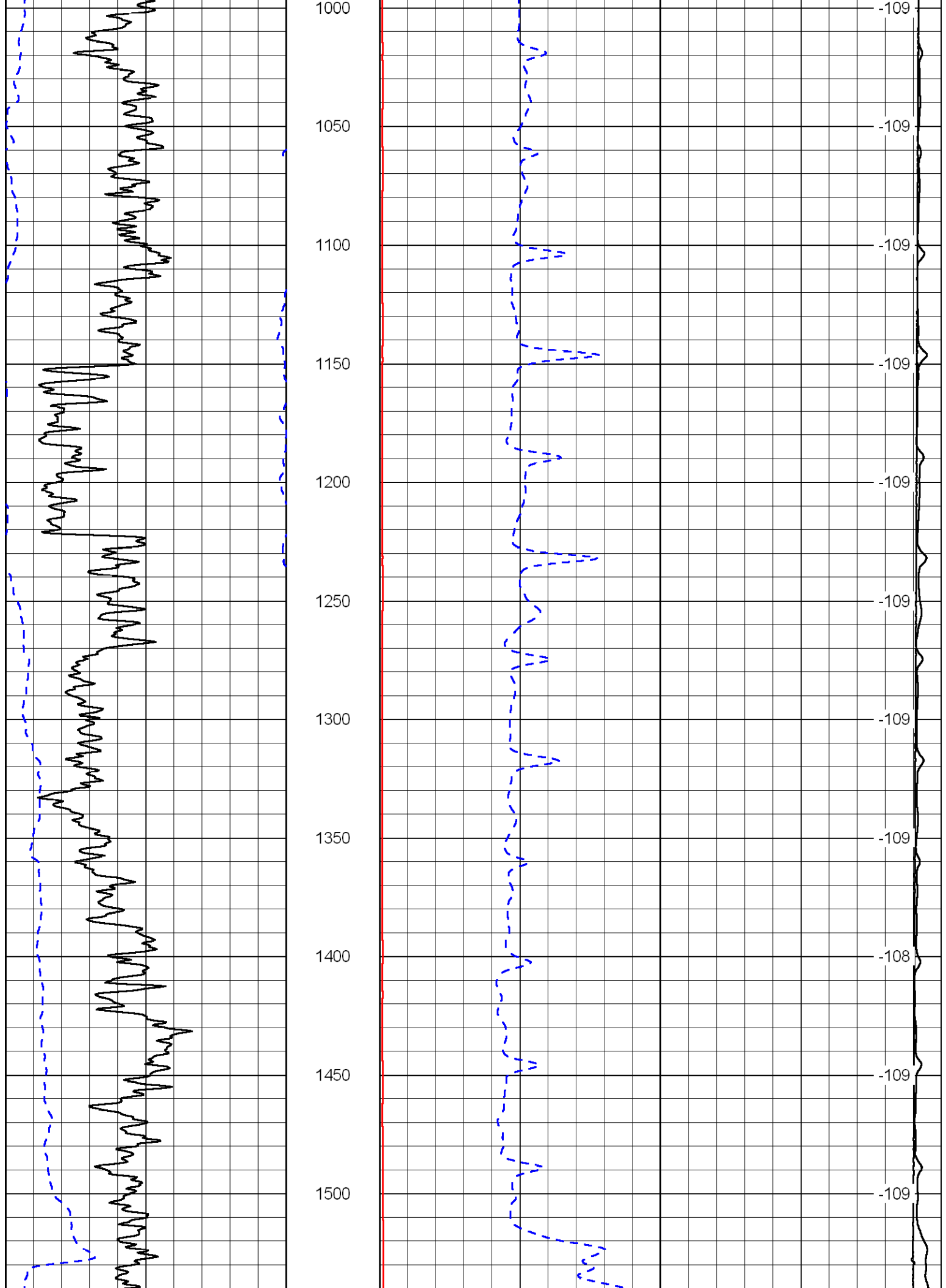
0 Gamma Ray 150
-200 SP (MV) 0

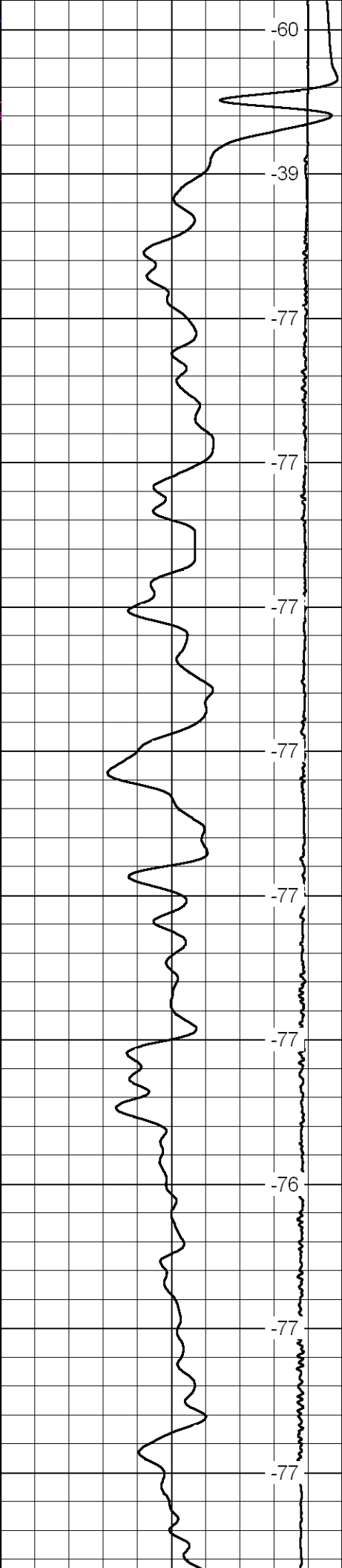
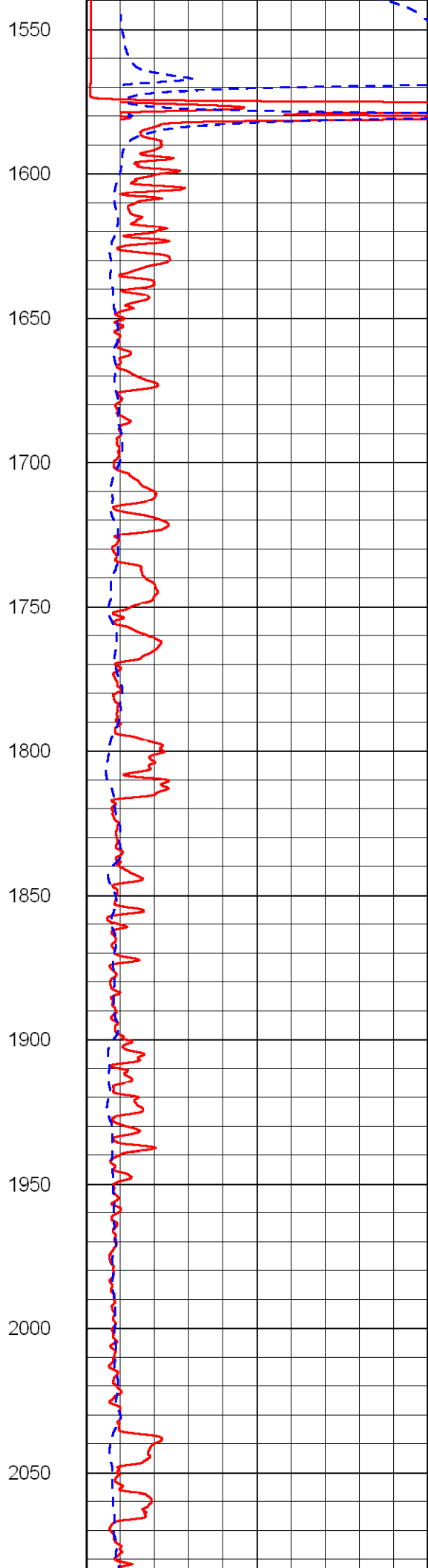
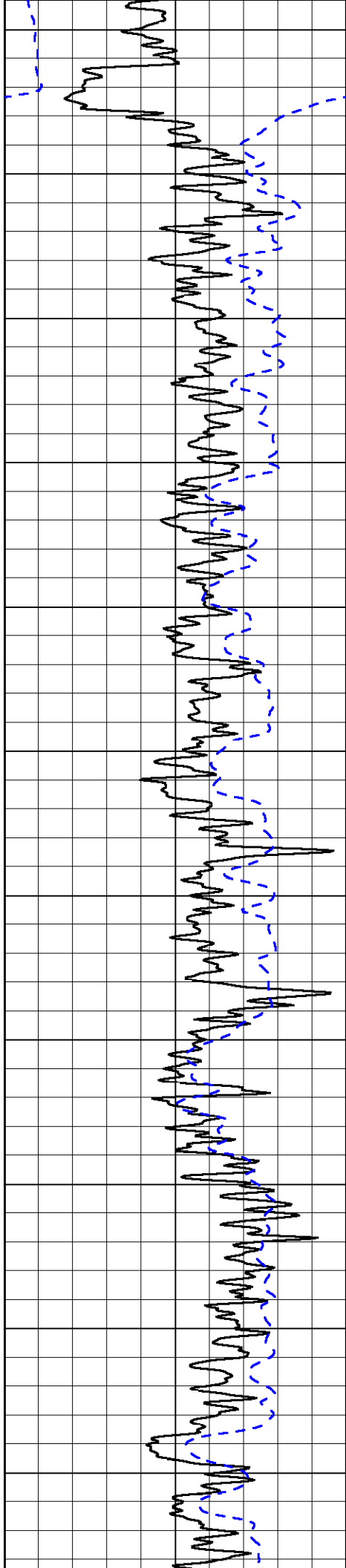
0 Shallow Resistivity (Ohm-m) 50
0 Deep Resistivity (Ohm-m) 50
1000 Conductivity (mmho/m) 0
15000 Line Tension (lb) 0
50 Shallow Resistivity (Ohm-m) 500
50 Deep Resistivity (Ohm-m) 500

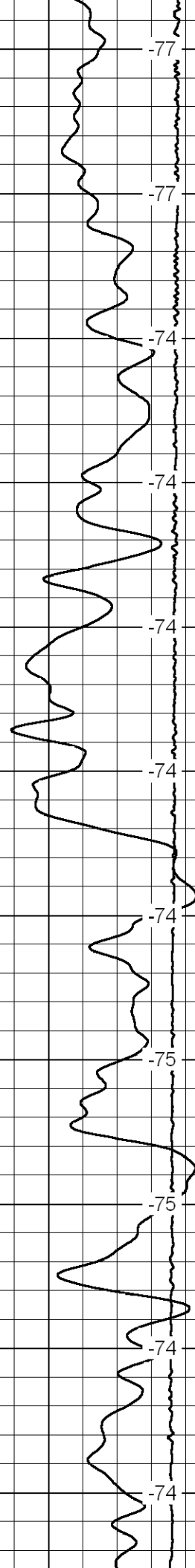
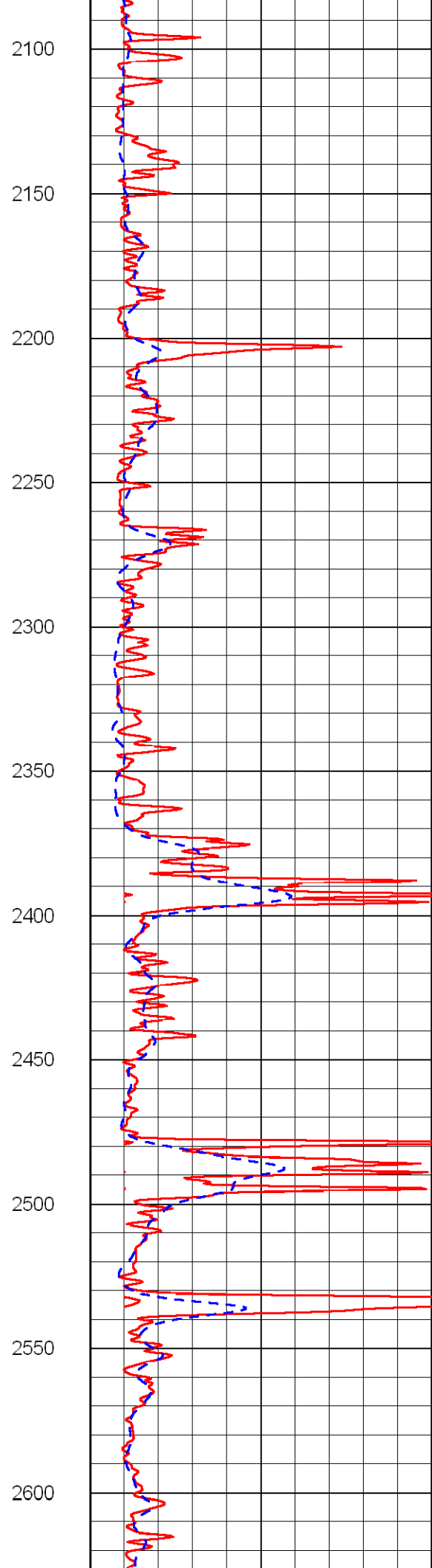
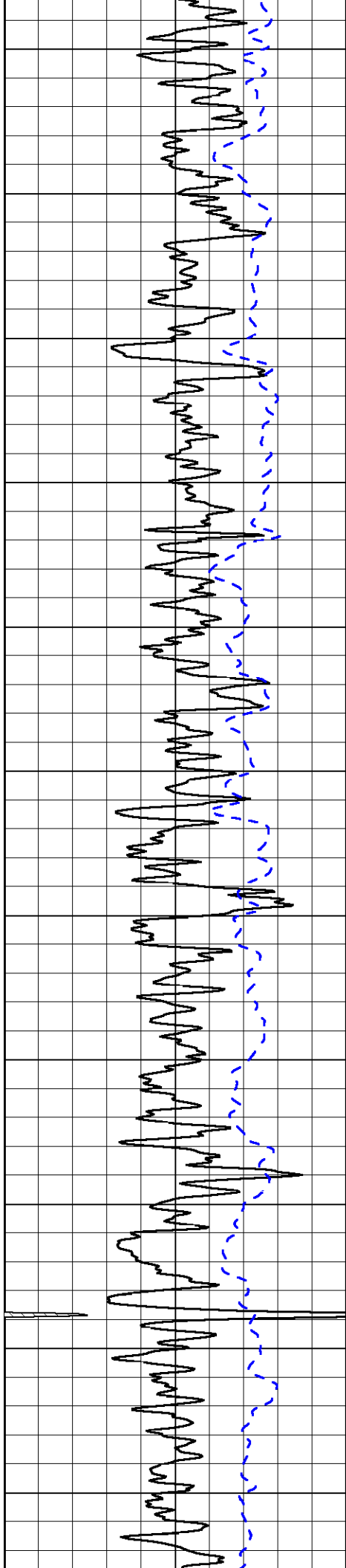
LSPD
(ft/min)

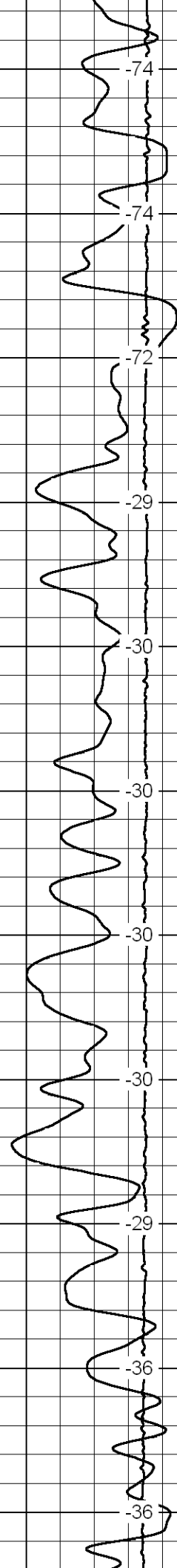
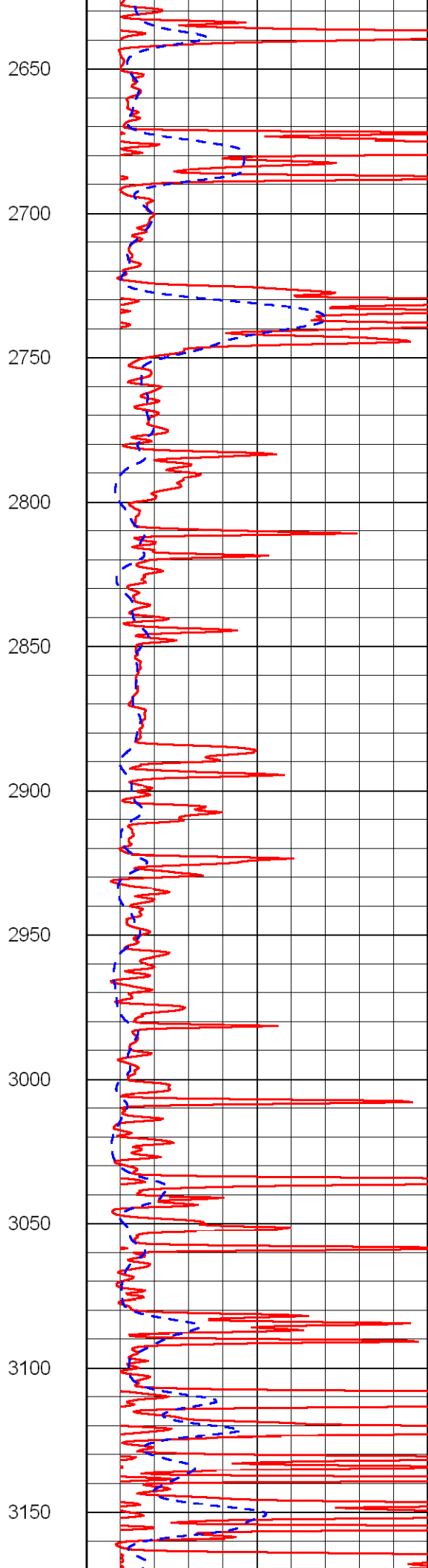
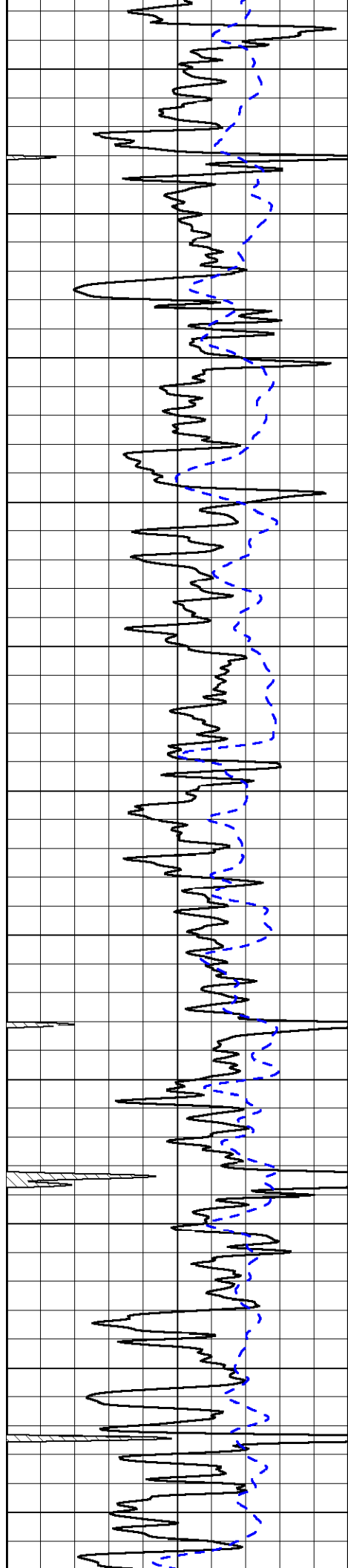


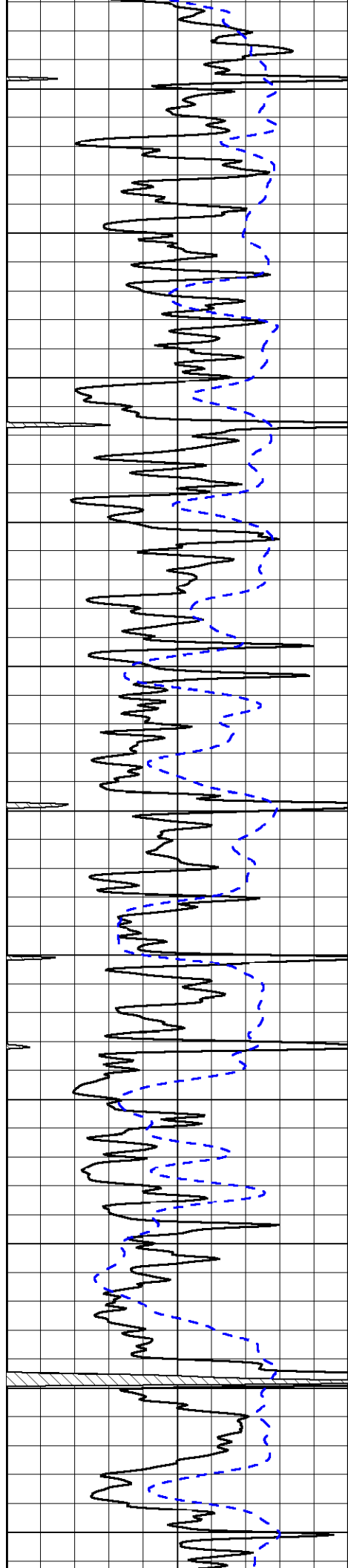












3200

3250

3300

3350

3400

3450

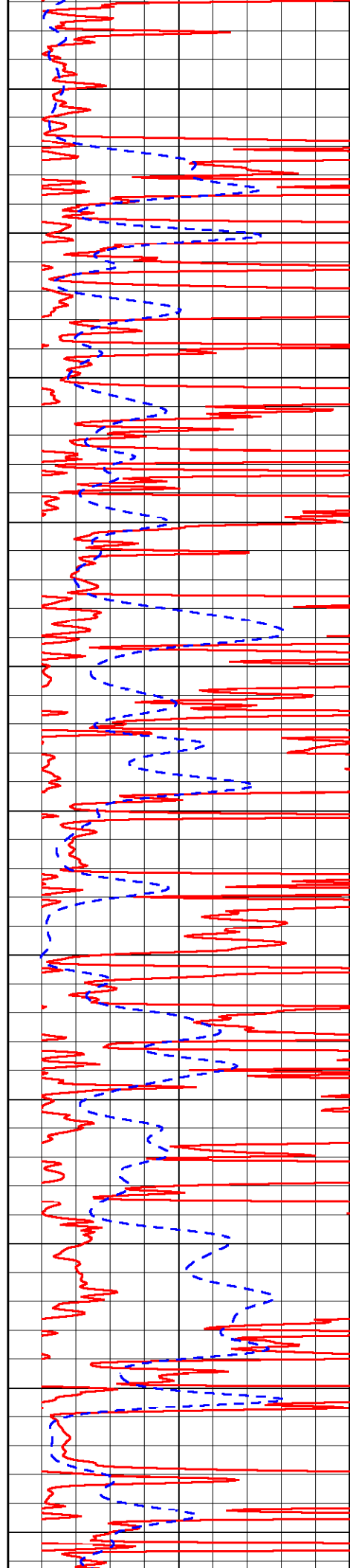
3500

3550

3600

3650

3700



-37

-37

-35

-35

-35

-35

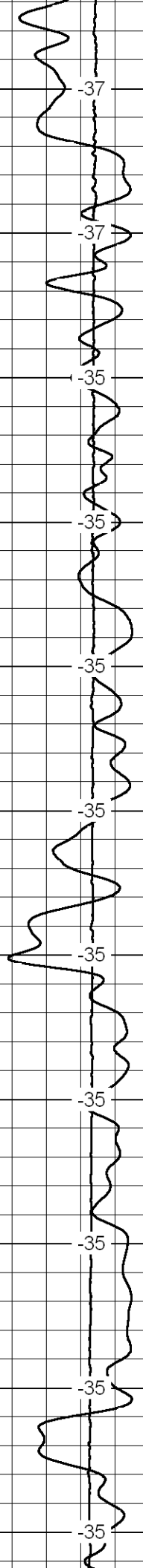
-35

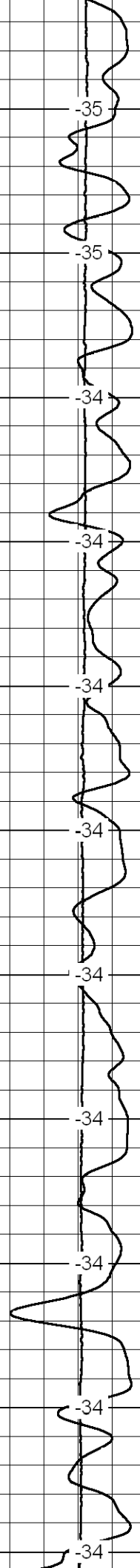
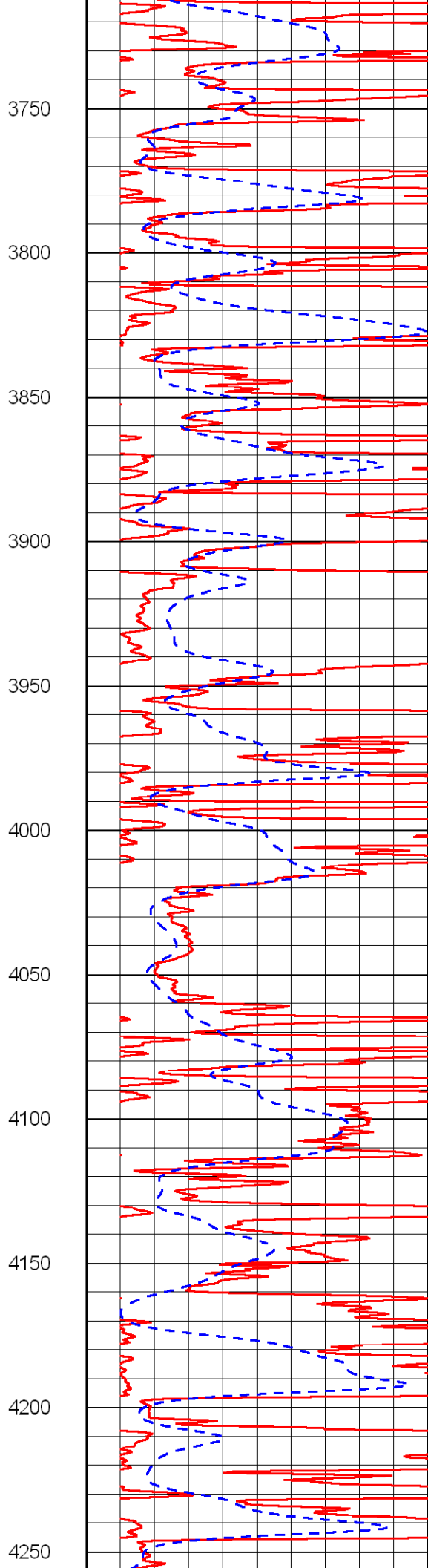
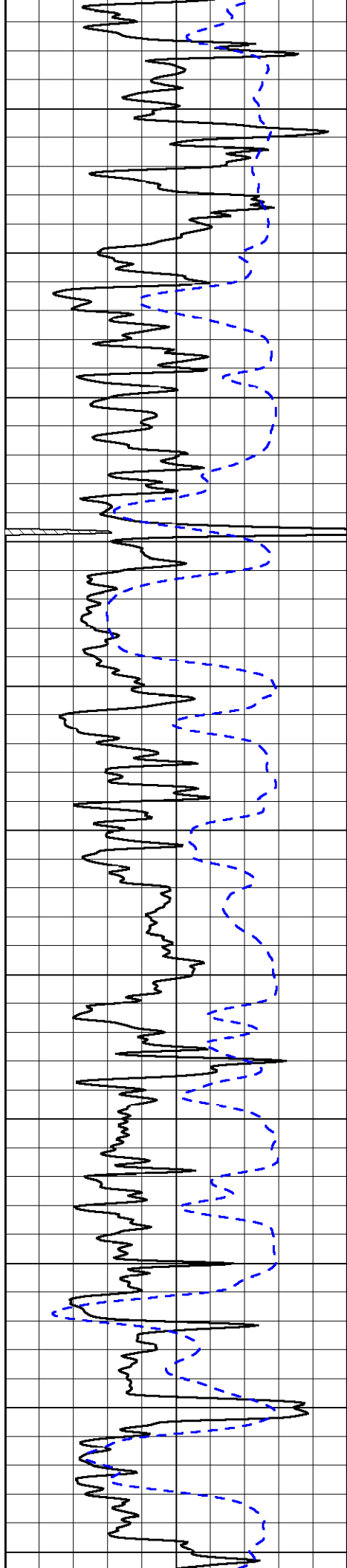
-35

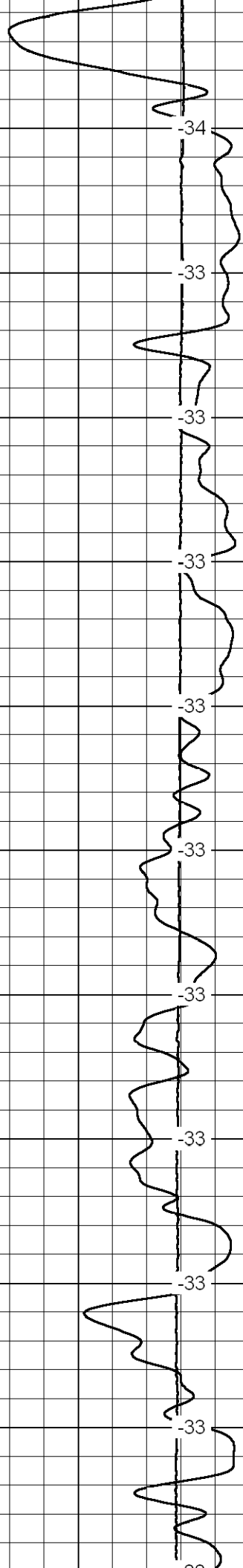
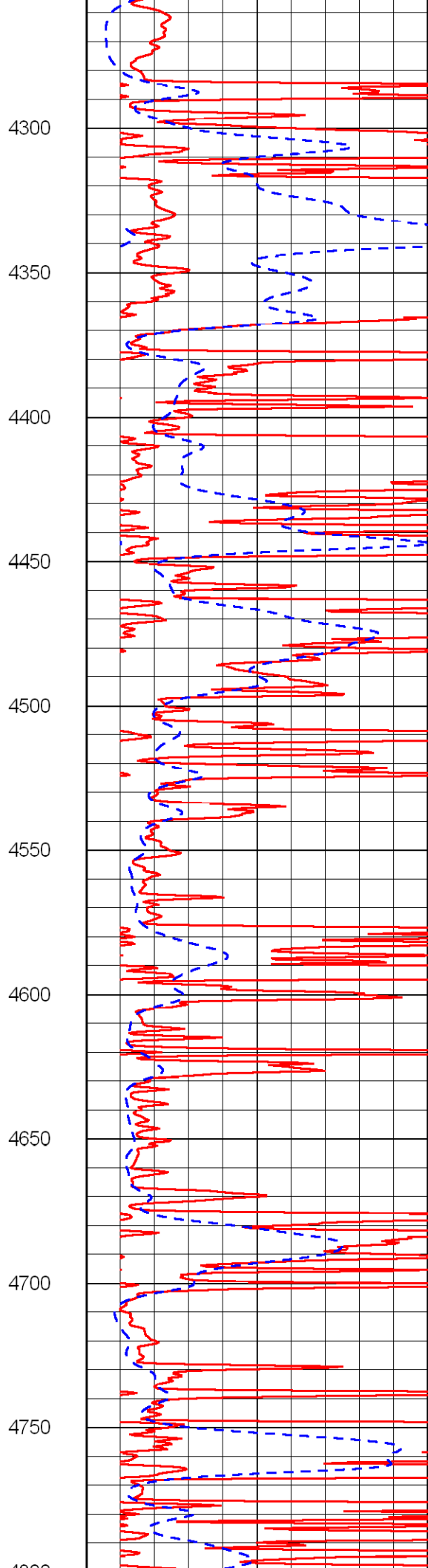
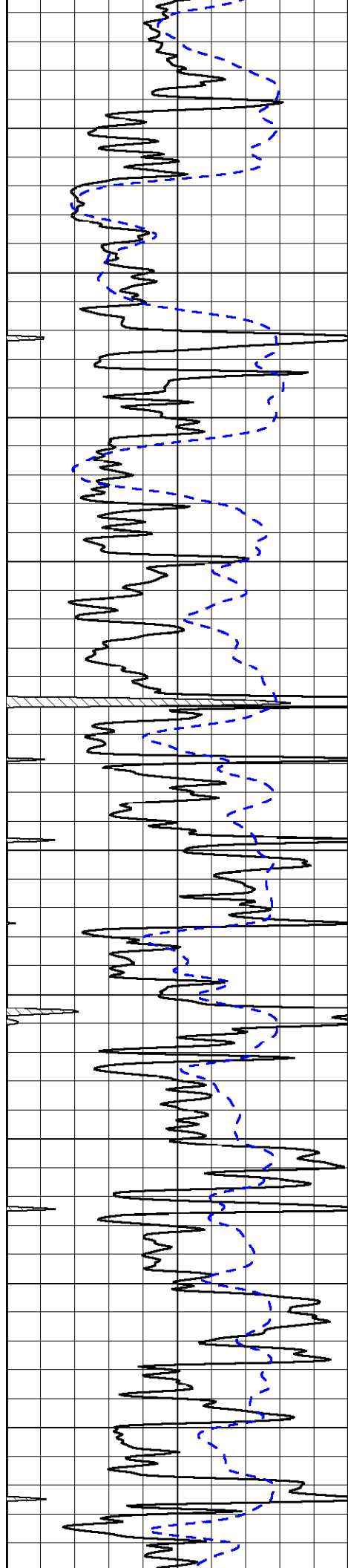
-35

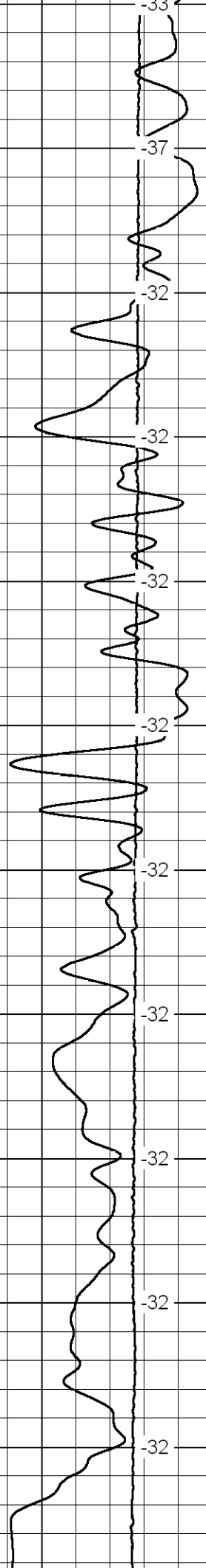
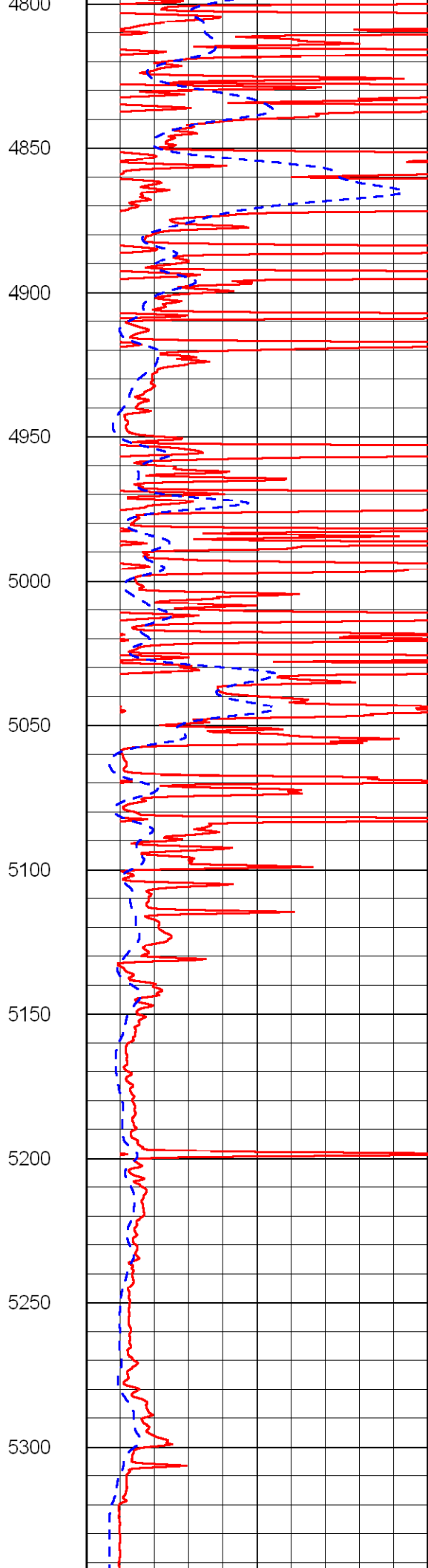
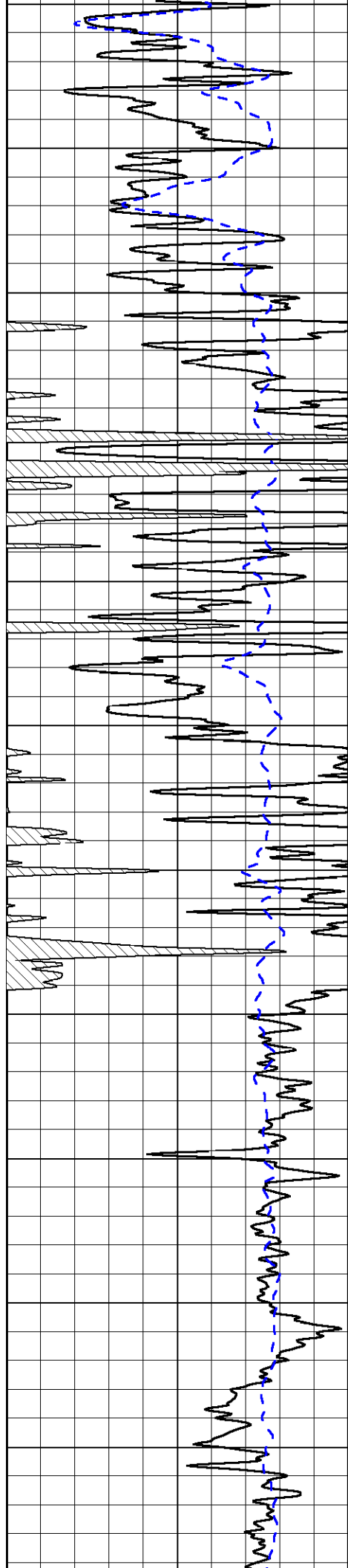
-35

-35



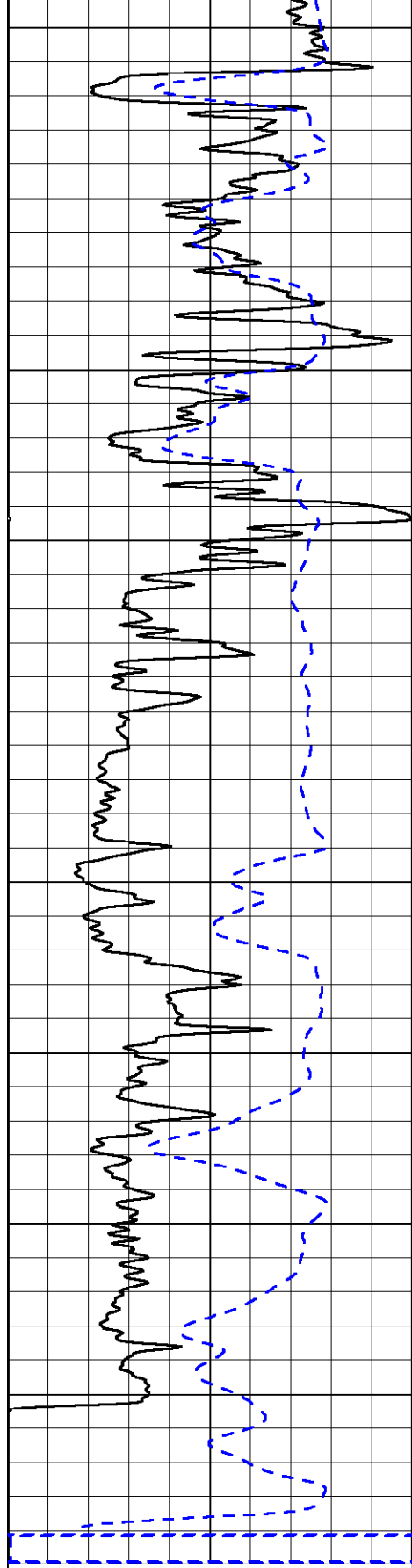




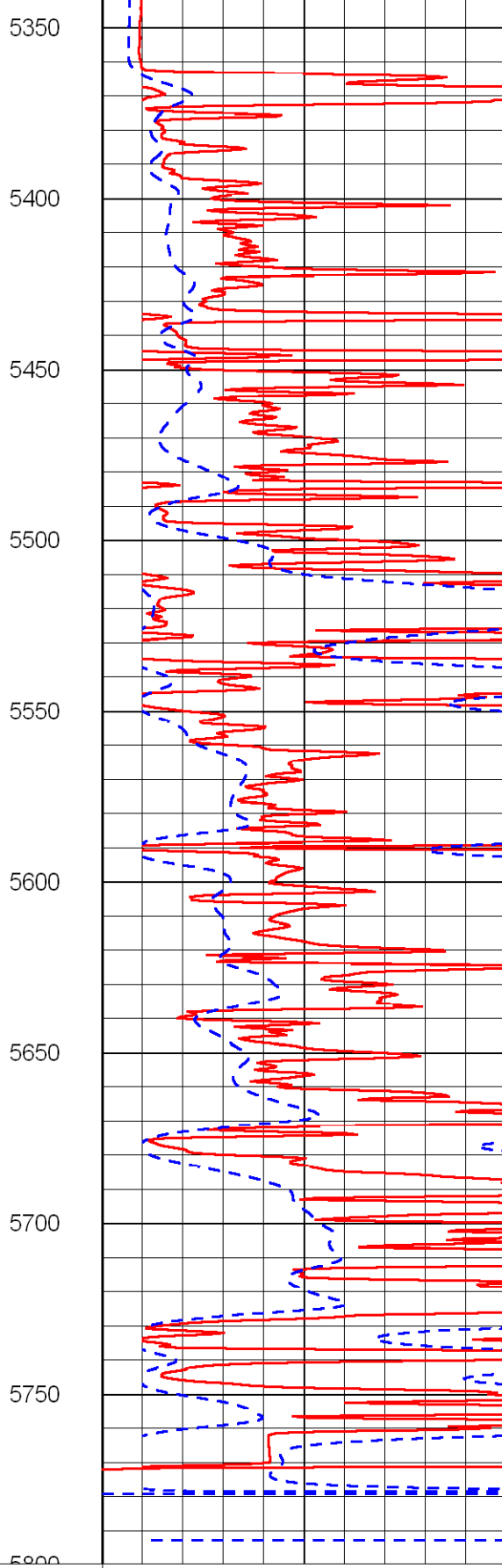


4800
4850
4900
4950
5000
5050
5100
5150
5200
5250
5300

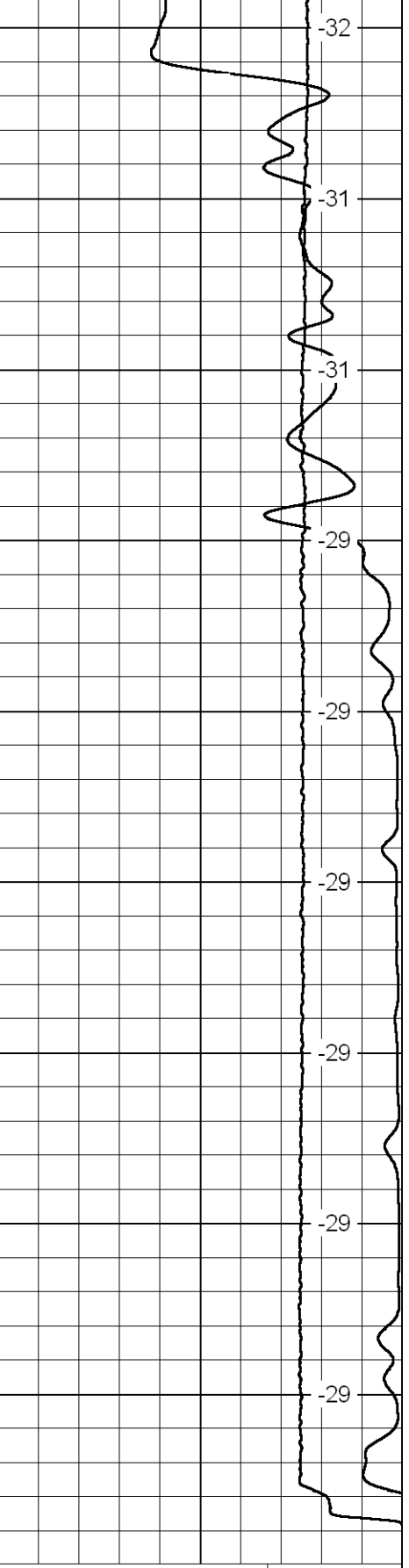
-33
-37
-32
-32
-32
-32
-32
-32
-32
-32
-32



0 Gamma Ray 150
 -200 SP (MV) 0



0 Shallow Resistivity (Ohm-m) 50
 0 Deep Resistivity (Ohm-m) 50
 1000 Conductivity (mmho/m) 0
 15000 Line Tension (lb) 0



LSPD (ft/min) 0

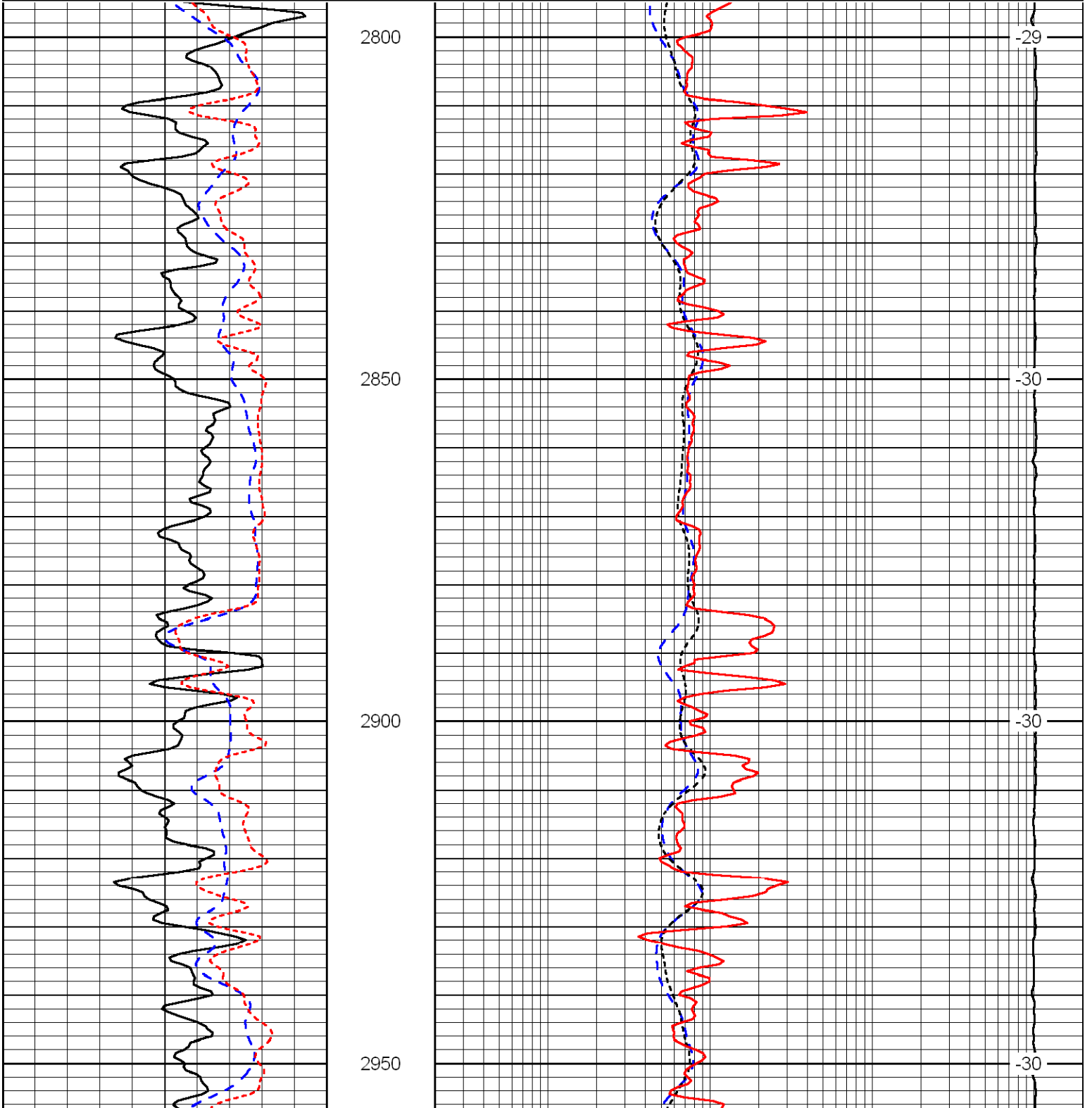
Shallow Resistivity
 50 (Ohm-m) 500
 50 Deep Resistivity (Ohm-m) 500

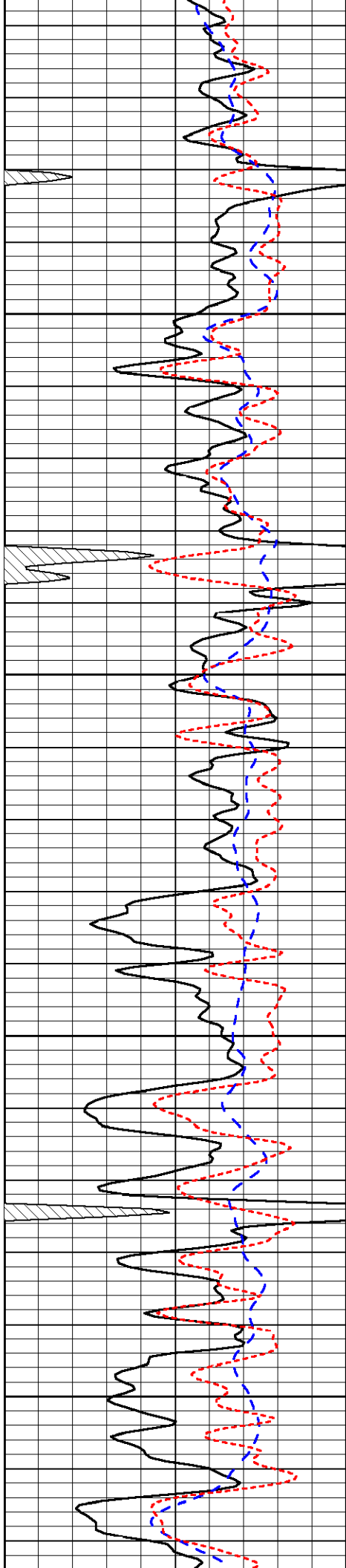
Database File: c:\warrior\data\berexco_seyb no. 1-29\berexhd.db
 Dataset Pathname: dil/ber2in
 Presentation Format: dil
 Dataset Creation: Fri Feb 27 15:22:42 2009
 Charted by: Depth in Feet scaled 1:240

0	Gamma Ray	150
-200	SP (MV)	0
-160	Rxo / Rt	40

0.2	Deep Resistivity (Ohm-m)	2000
0.2	Medium Resistivity (Ohm-m)	2000
0.2	Shallow Resistivity (Ohm-m)	2000
15000	Line Tension (lb)	0

LSPD
(ft/min)



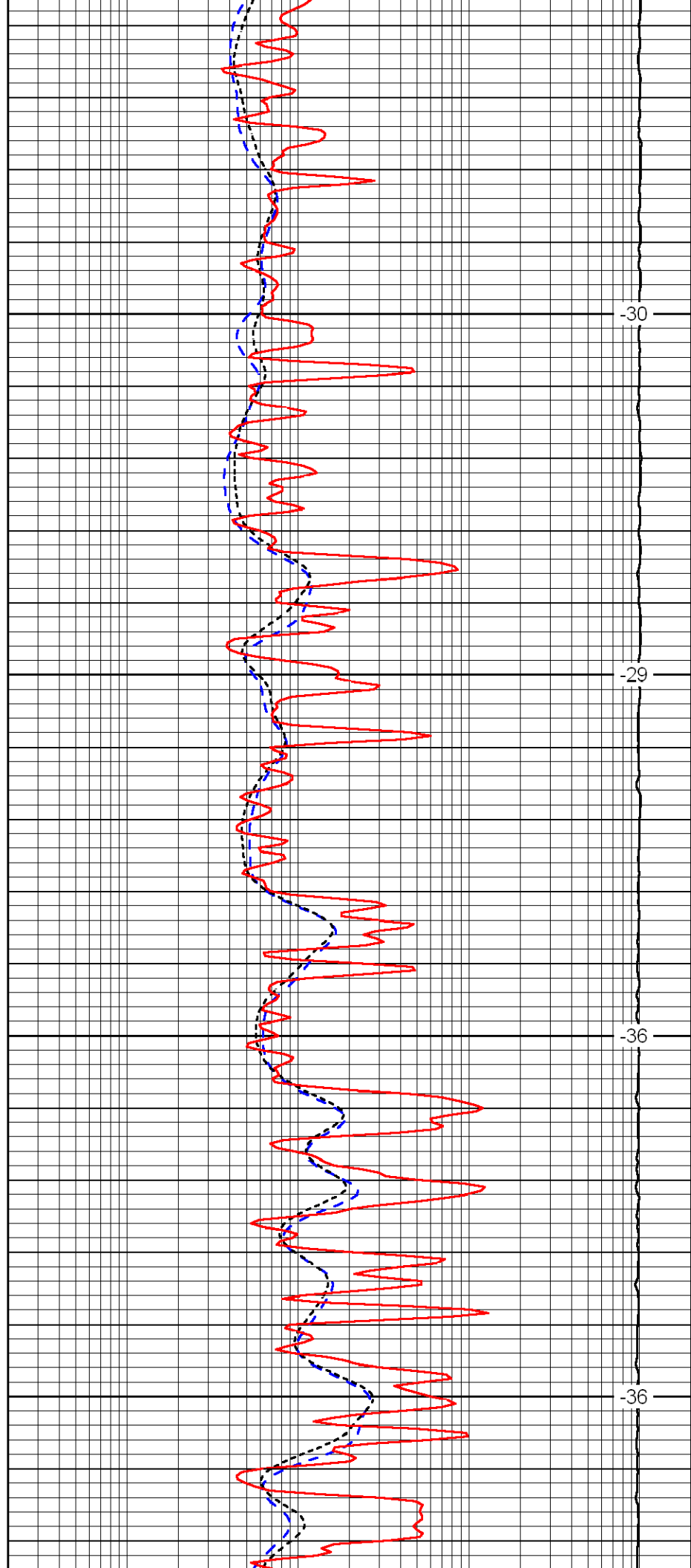


3000

3050

3100

3150

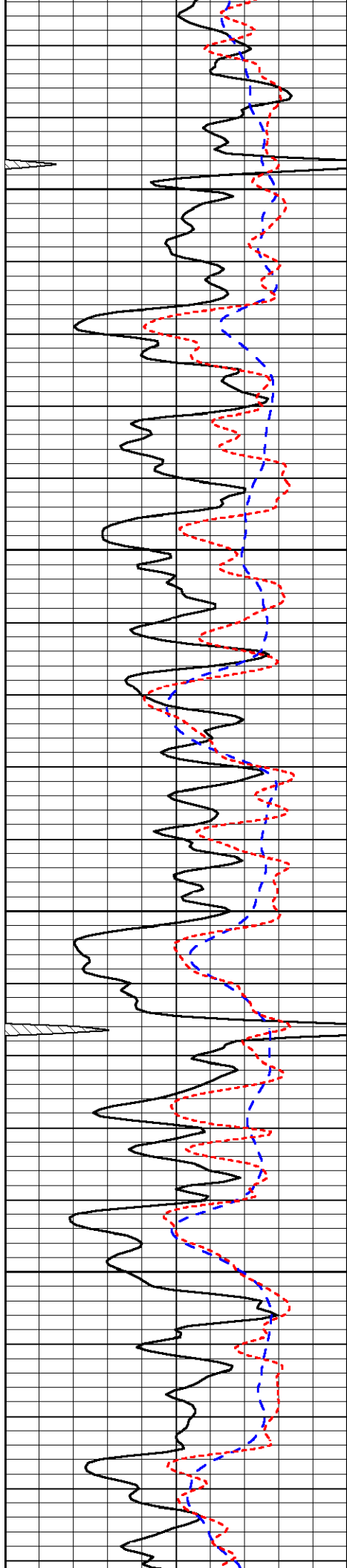


-30

-29

-36

-36

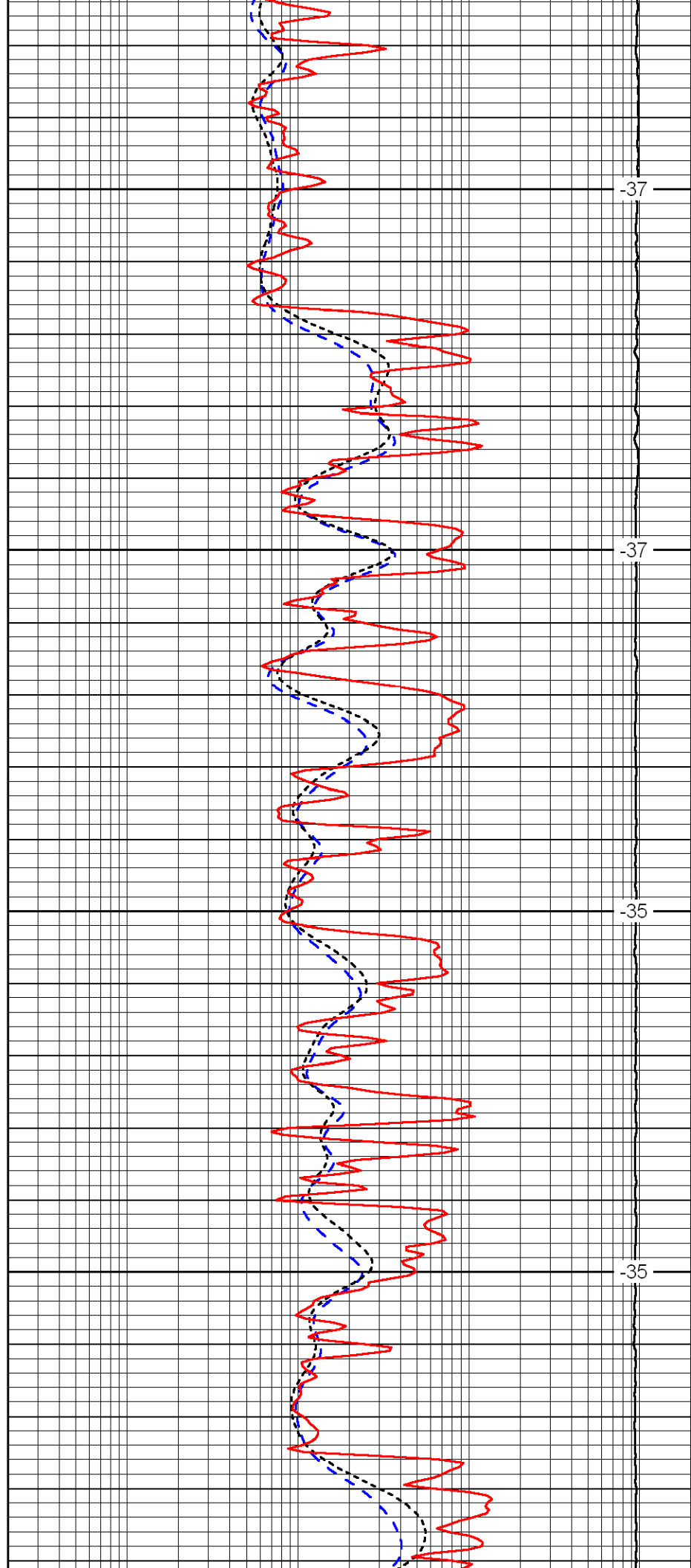


3200

3250

3300

3350

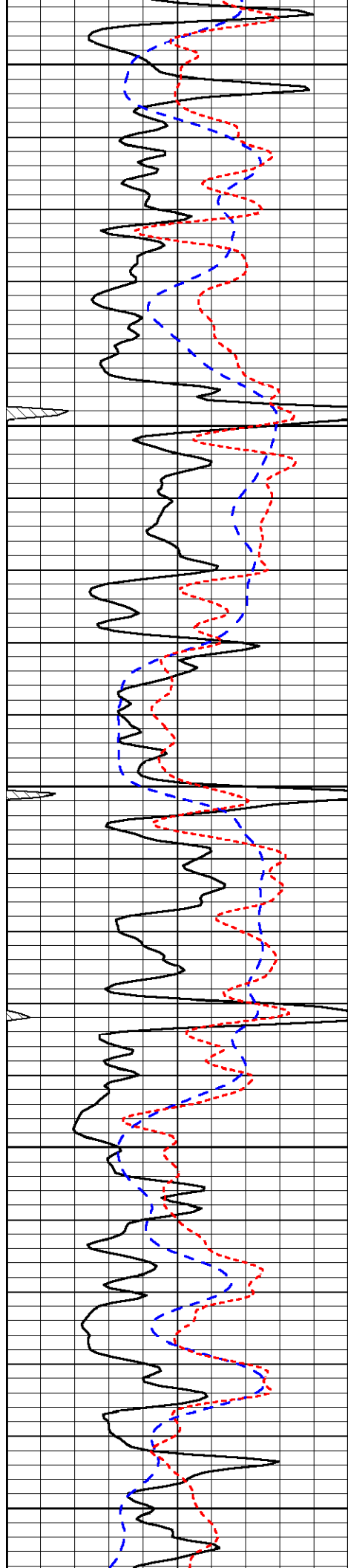


-37

-37

-35

-35



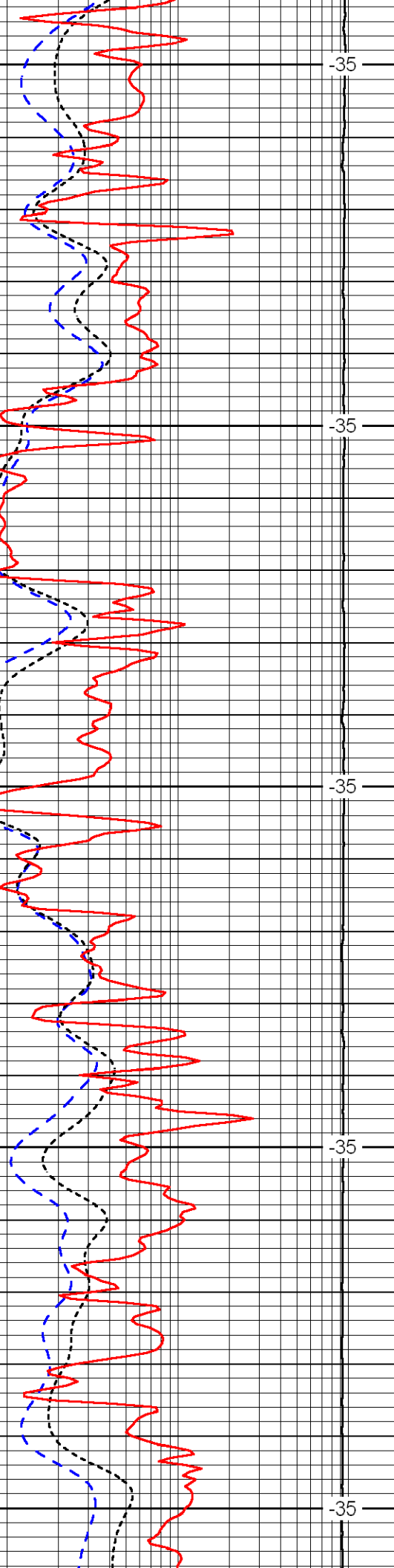
3400

3450

3500

3550

3600



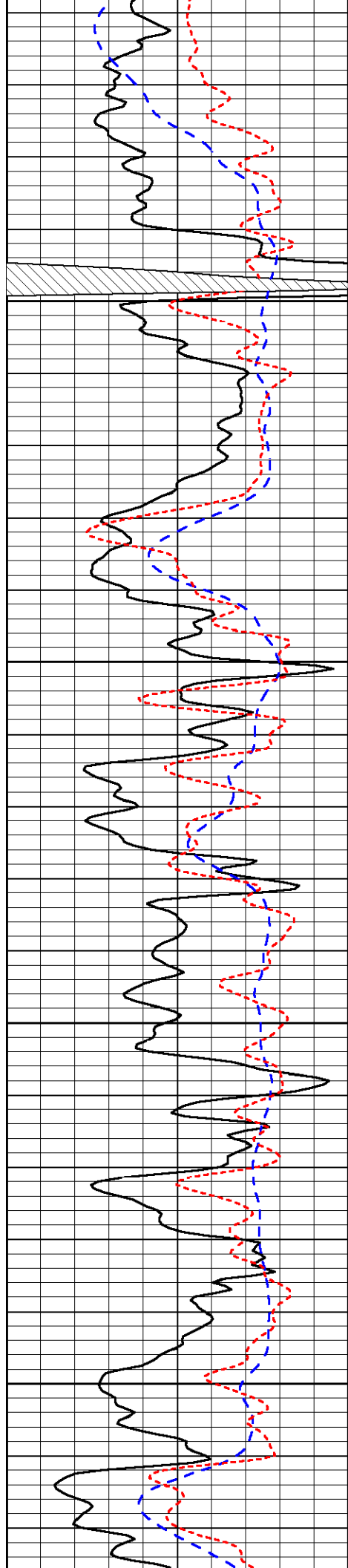
-35

-35

-35

-35

-35

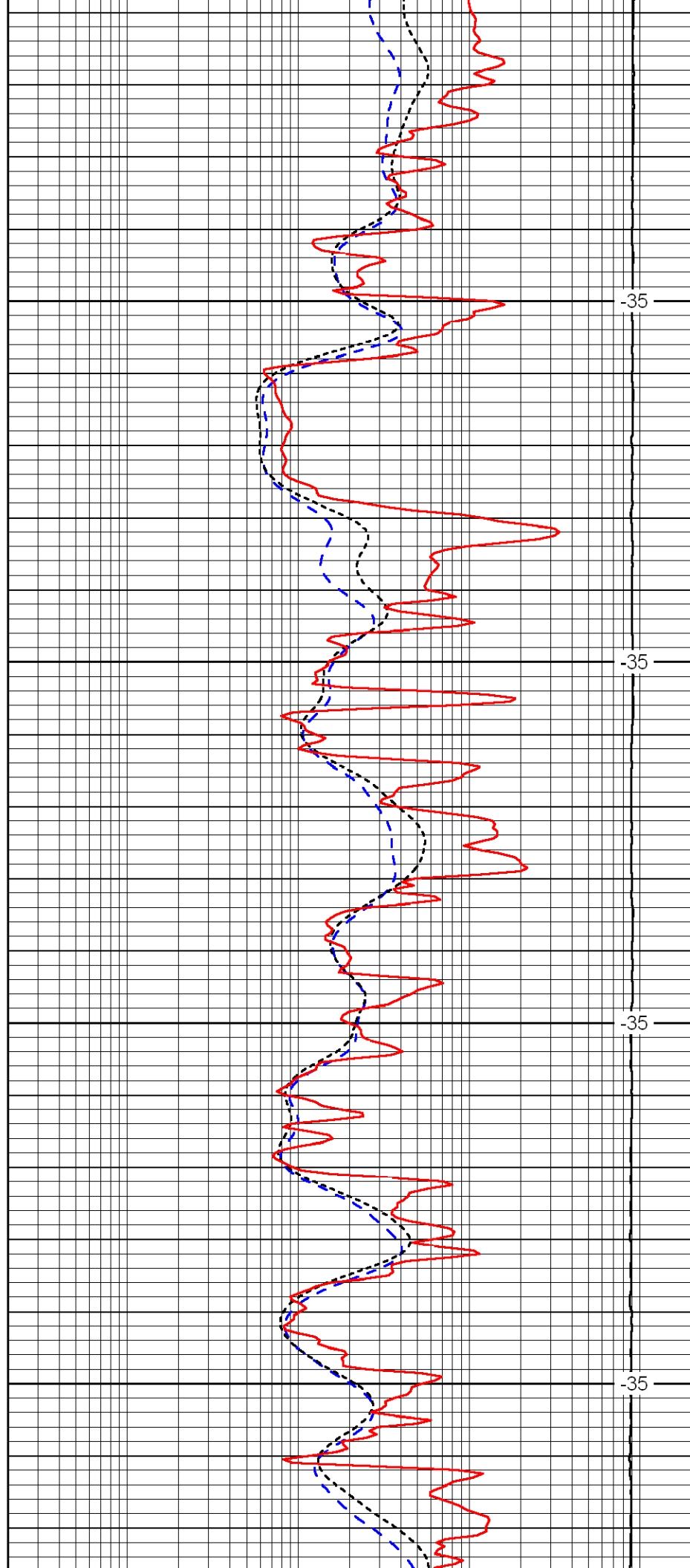


3650

3700

3750

3800

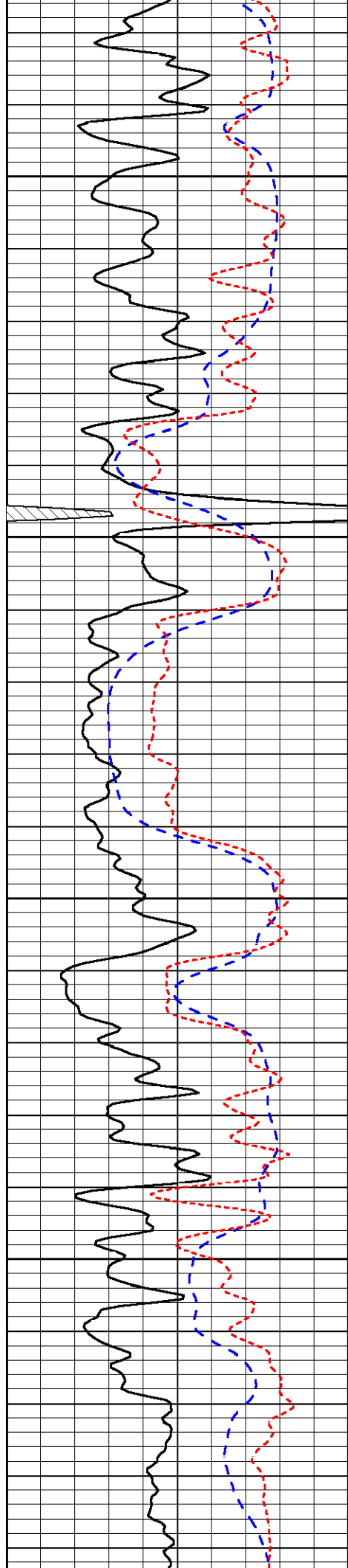


-35

-35

-35

-35

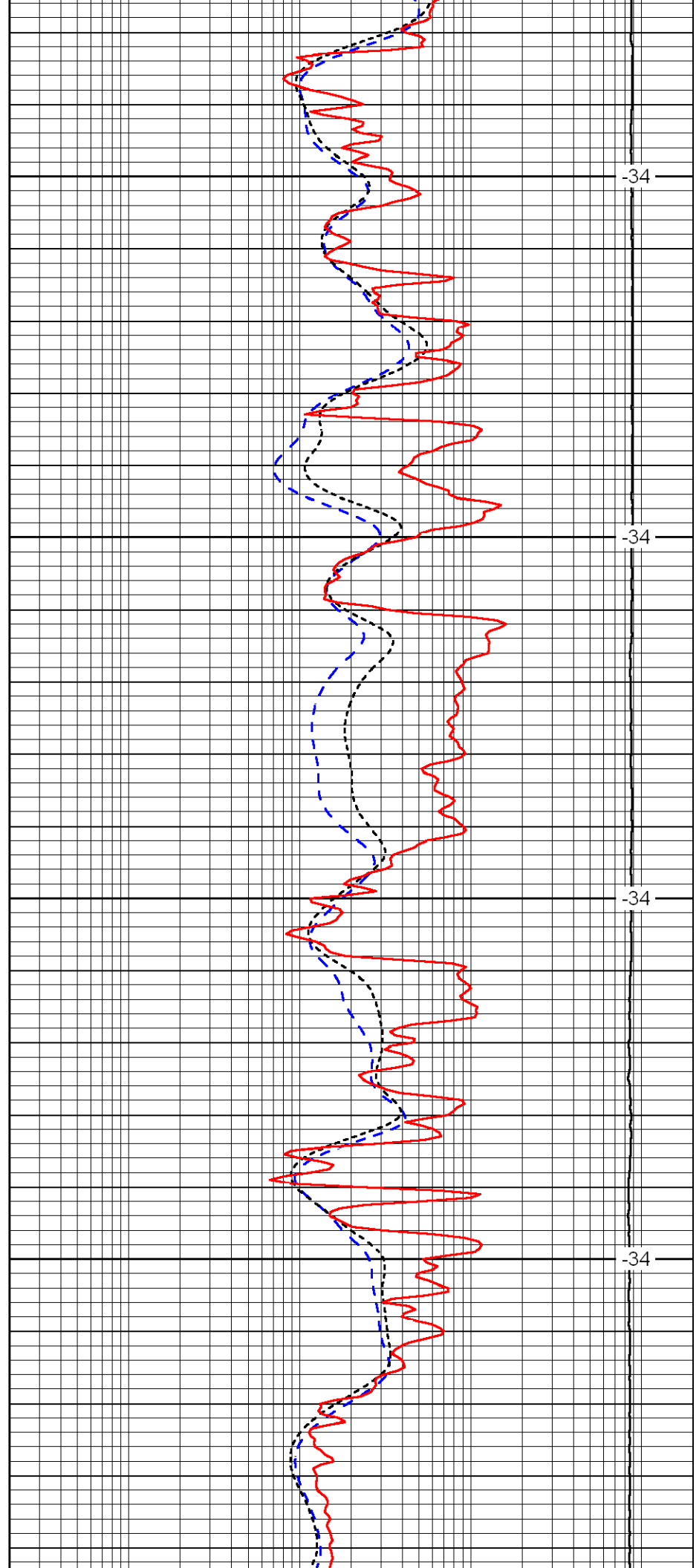


3850

3900

3950

4000

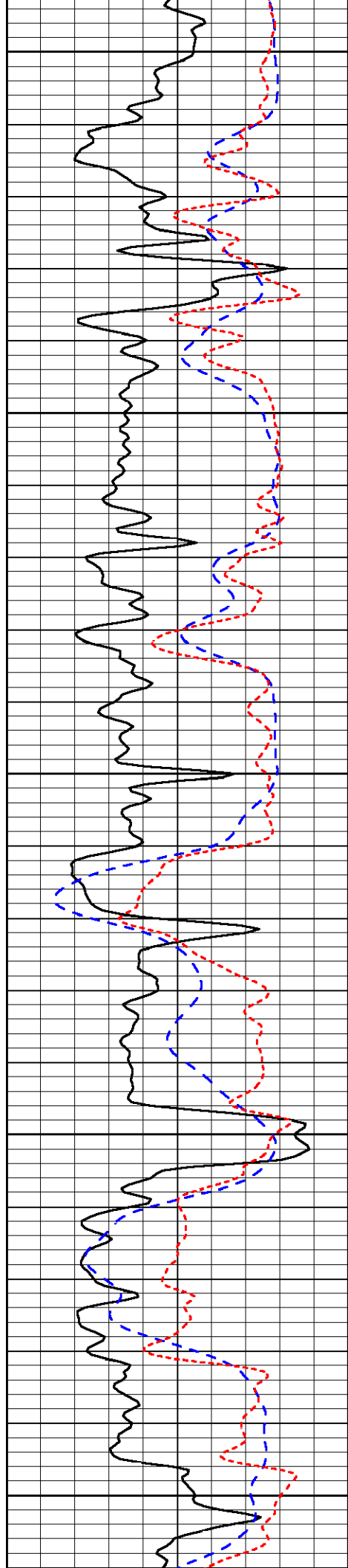


-34

-34

-34

-34



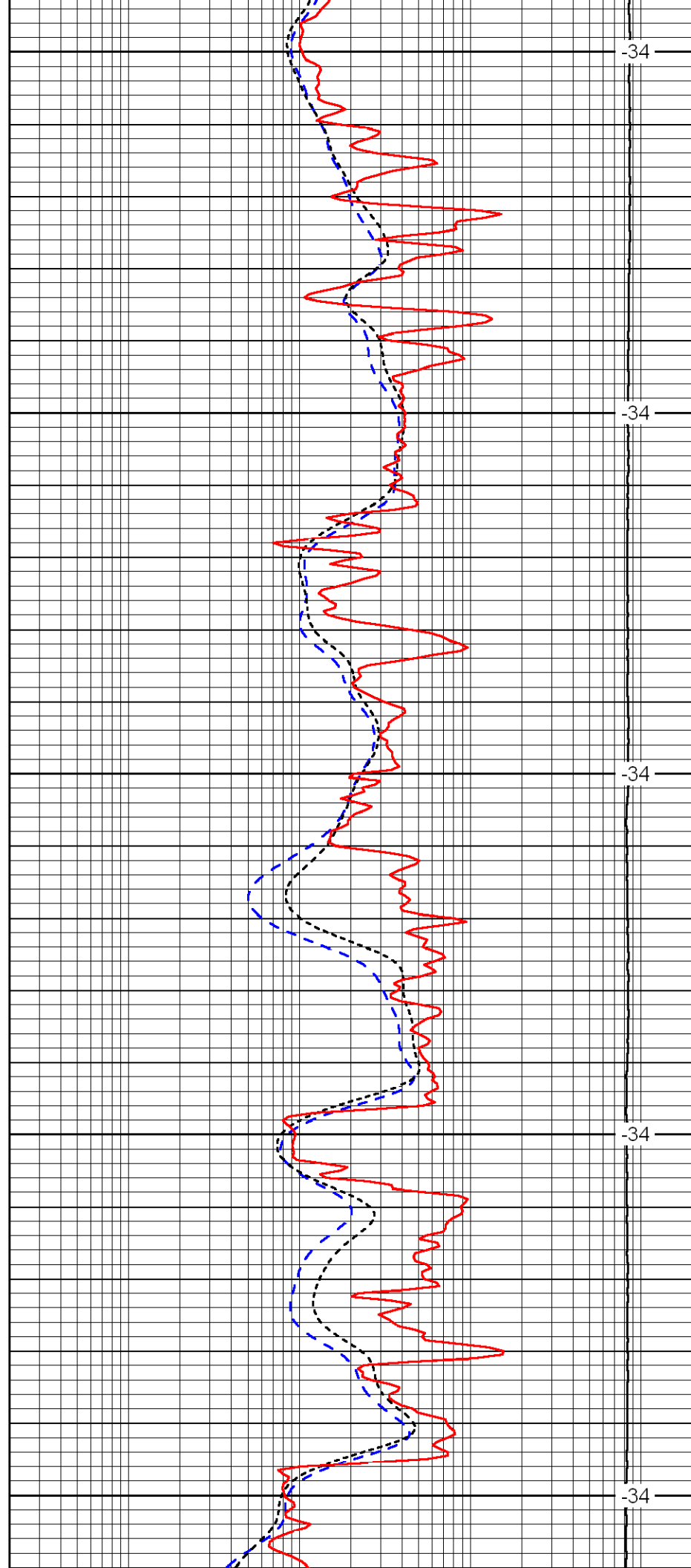
4050

4100

4150

4200

4250



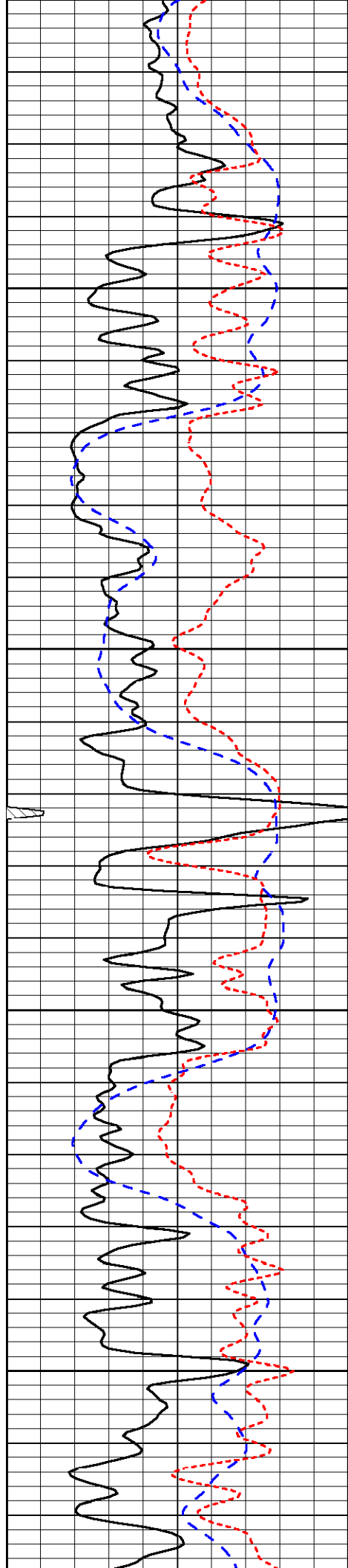
4050

4100

4150

4200

4250

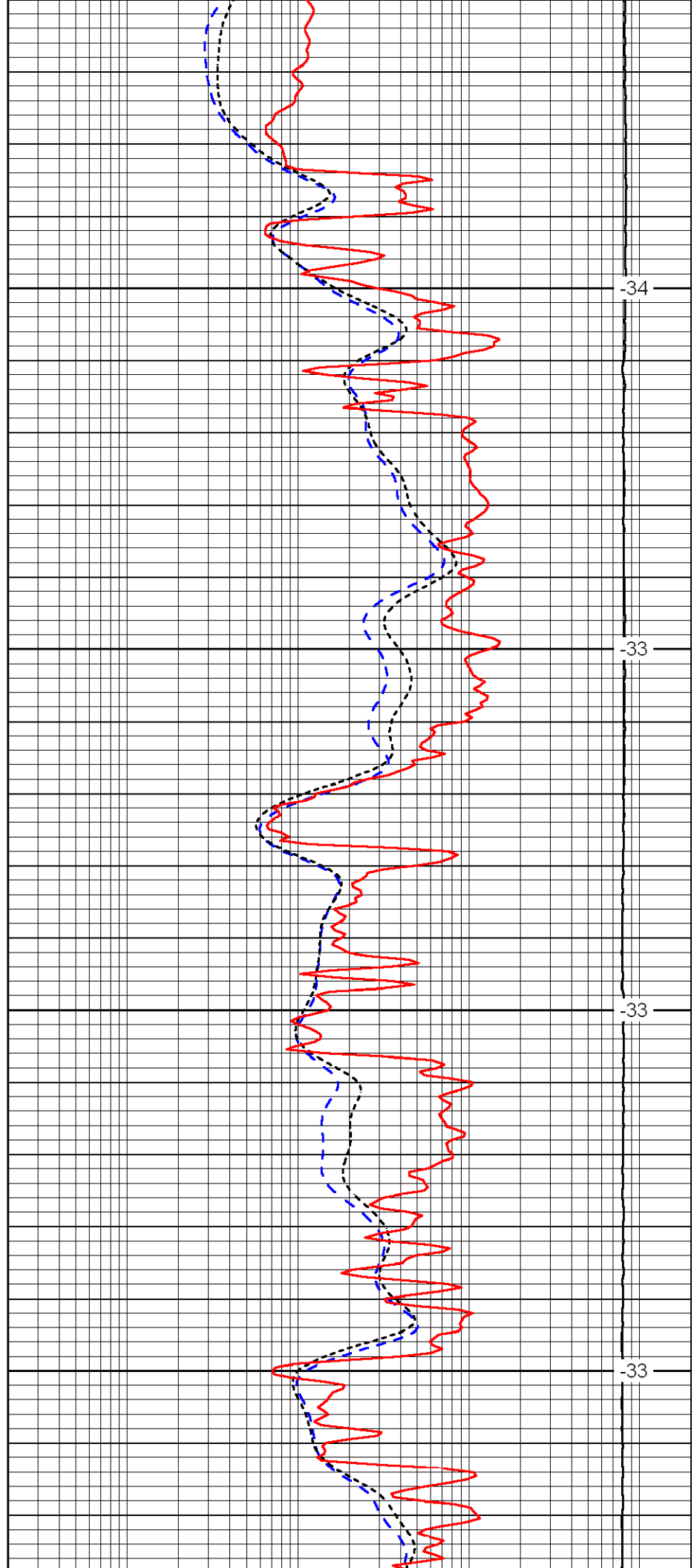


4300

4350

4400

4450

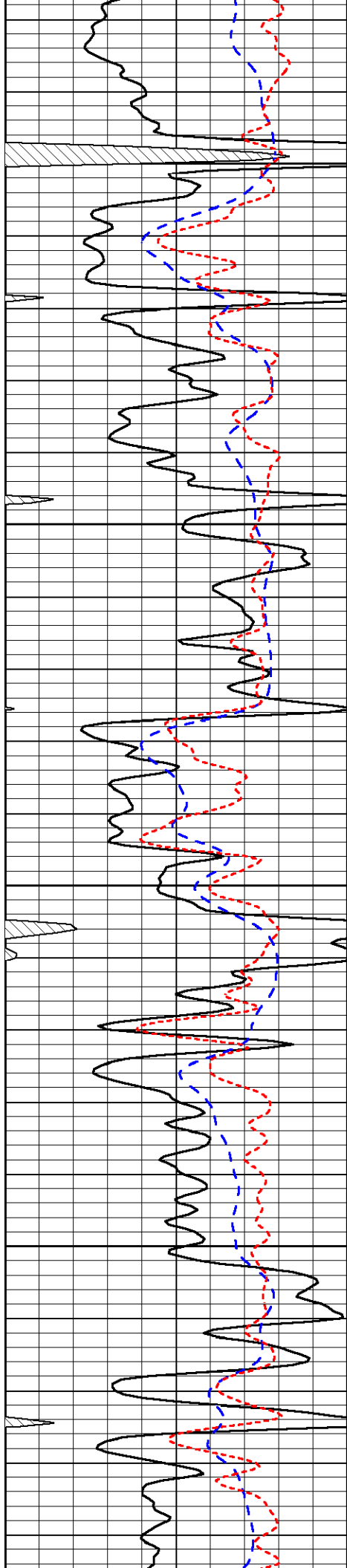


-34

-33

-33

-33

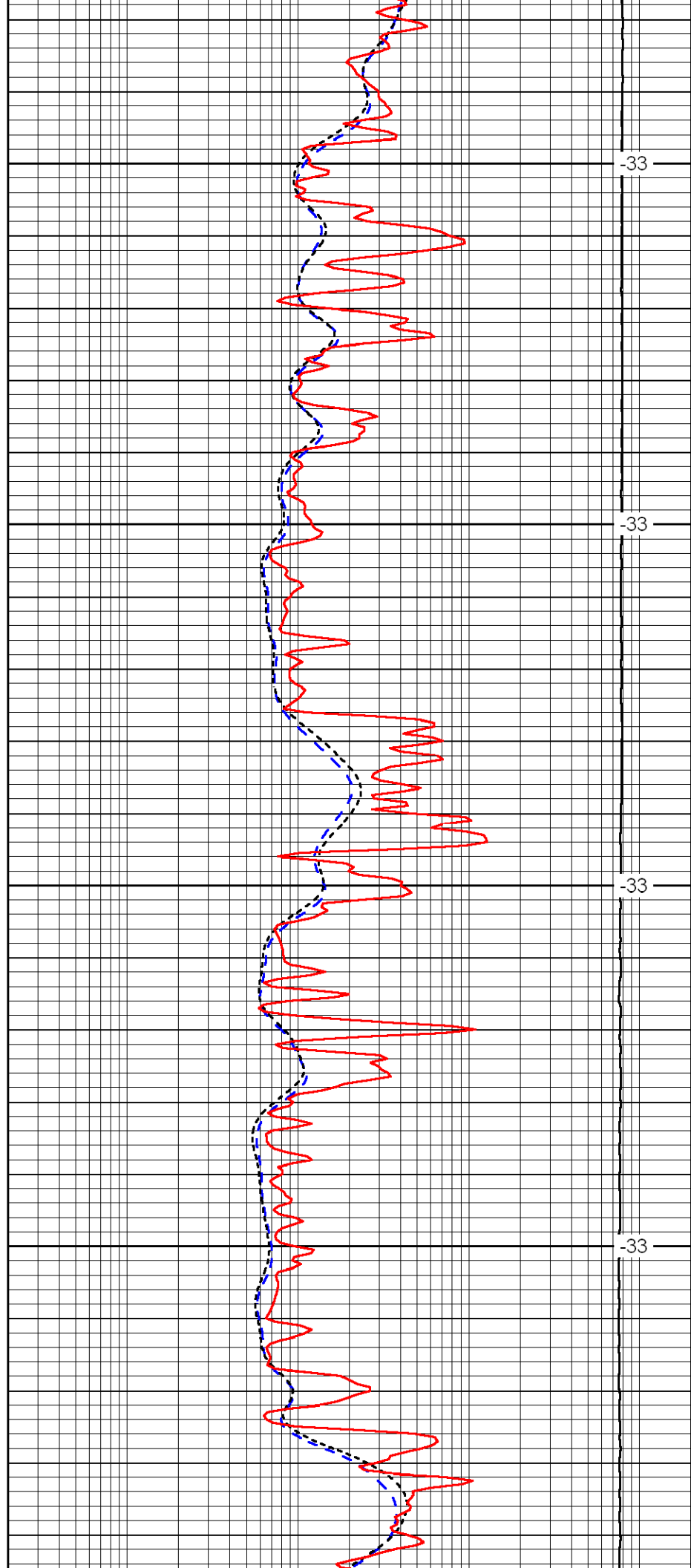


4500

4550

4600

4650

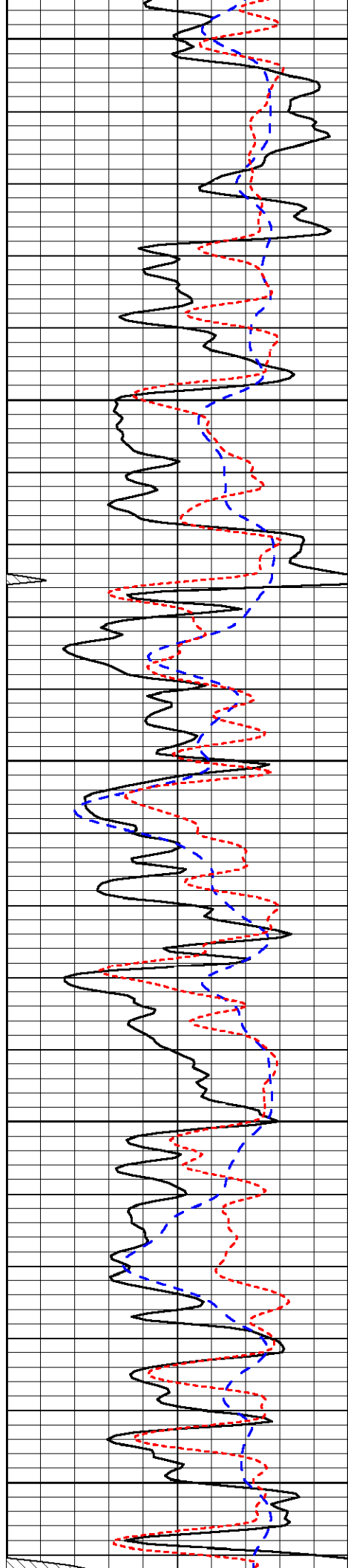


33

33

33

33



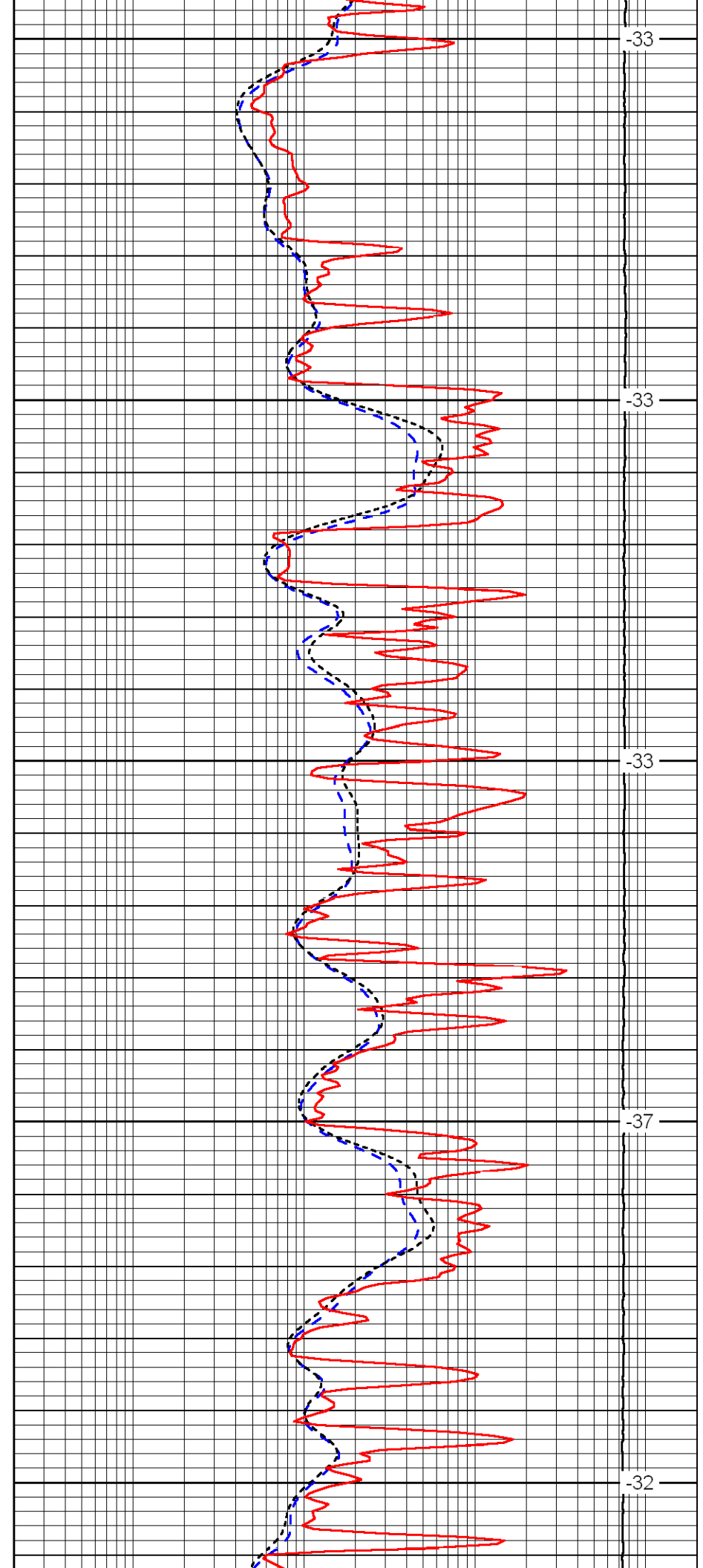
4700

4750

4800

4850

4900



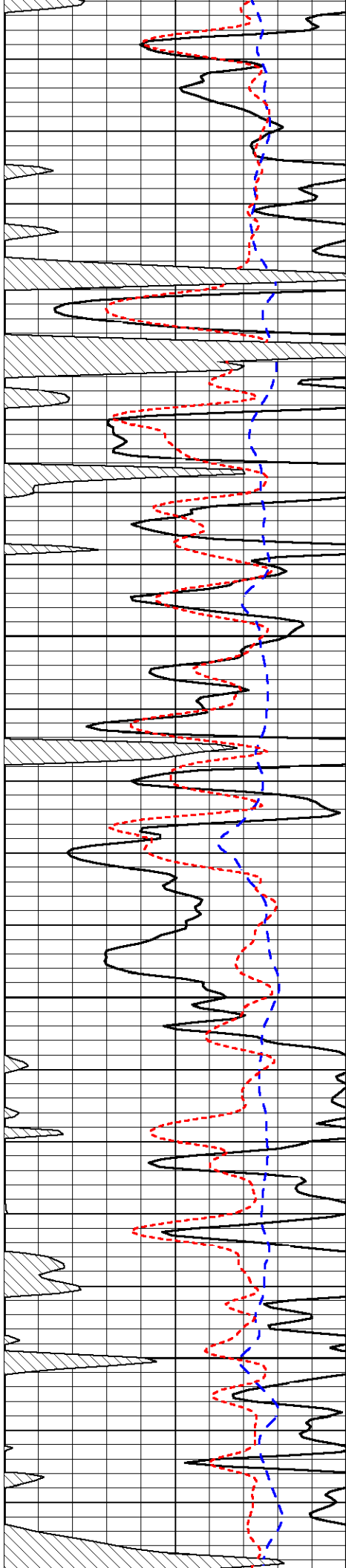
-33

-33

-33

-37

-32

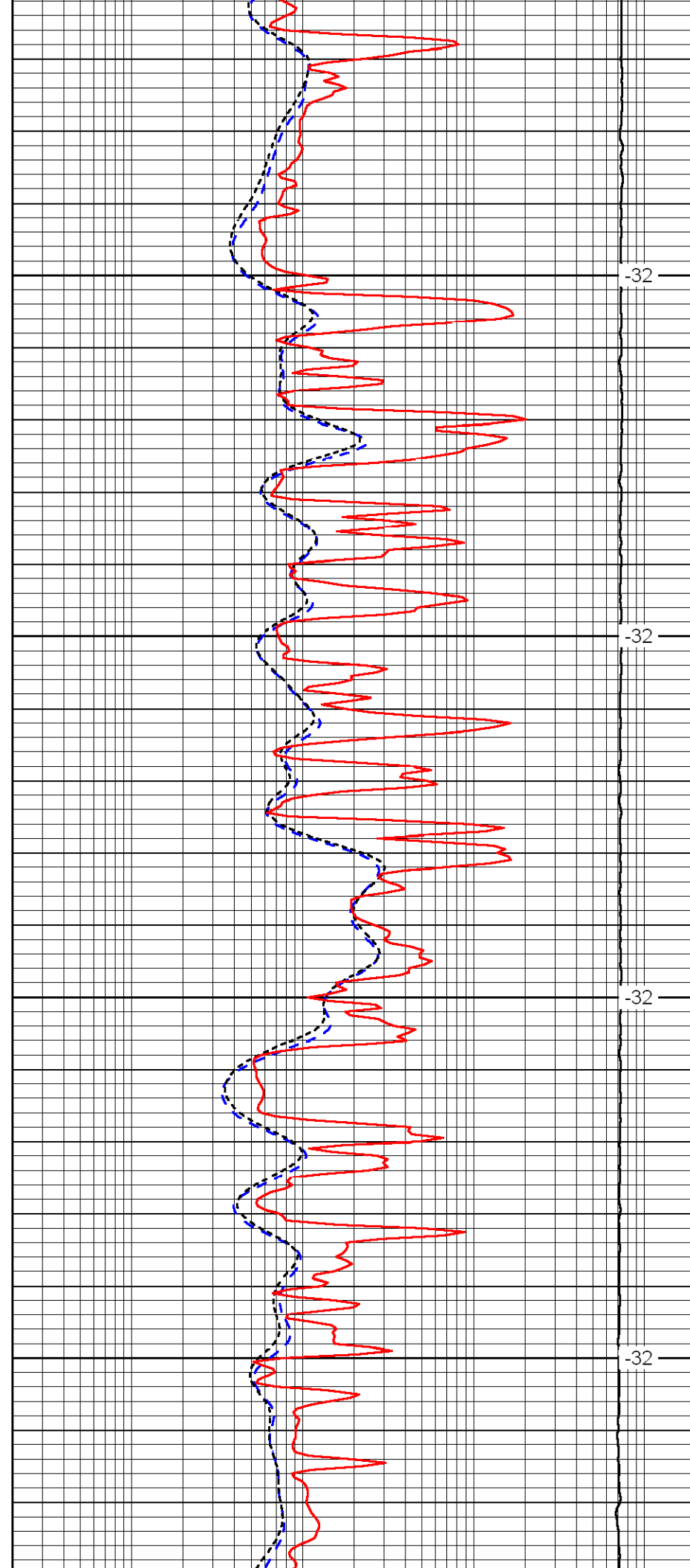


4950

5000

5050

5100

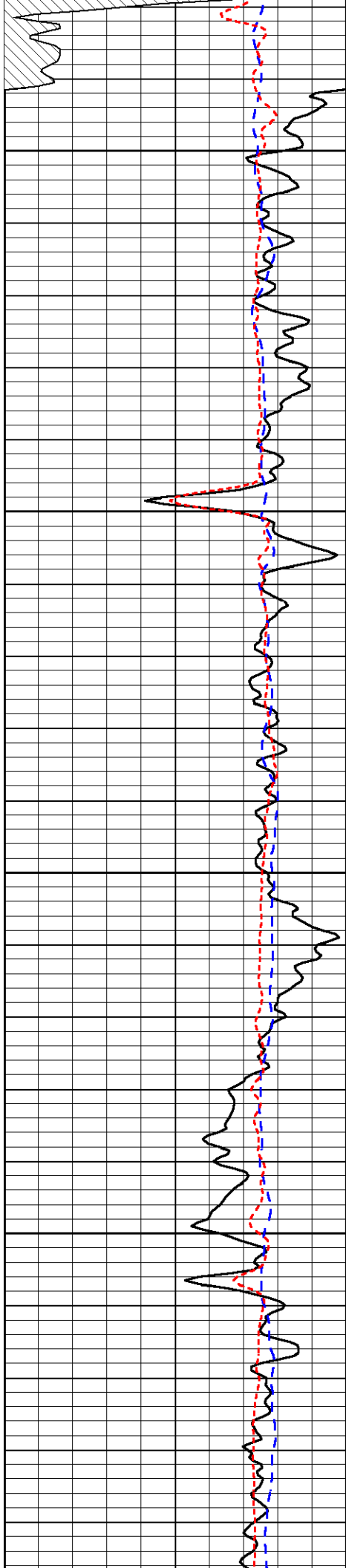


32

32

32

32

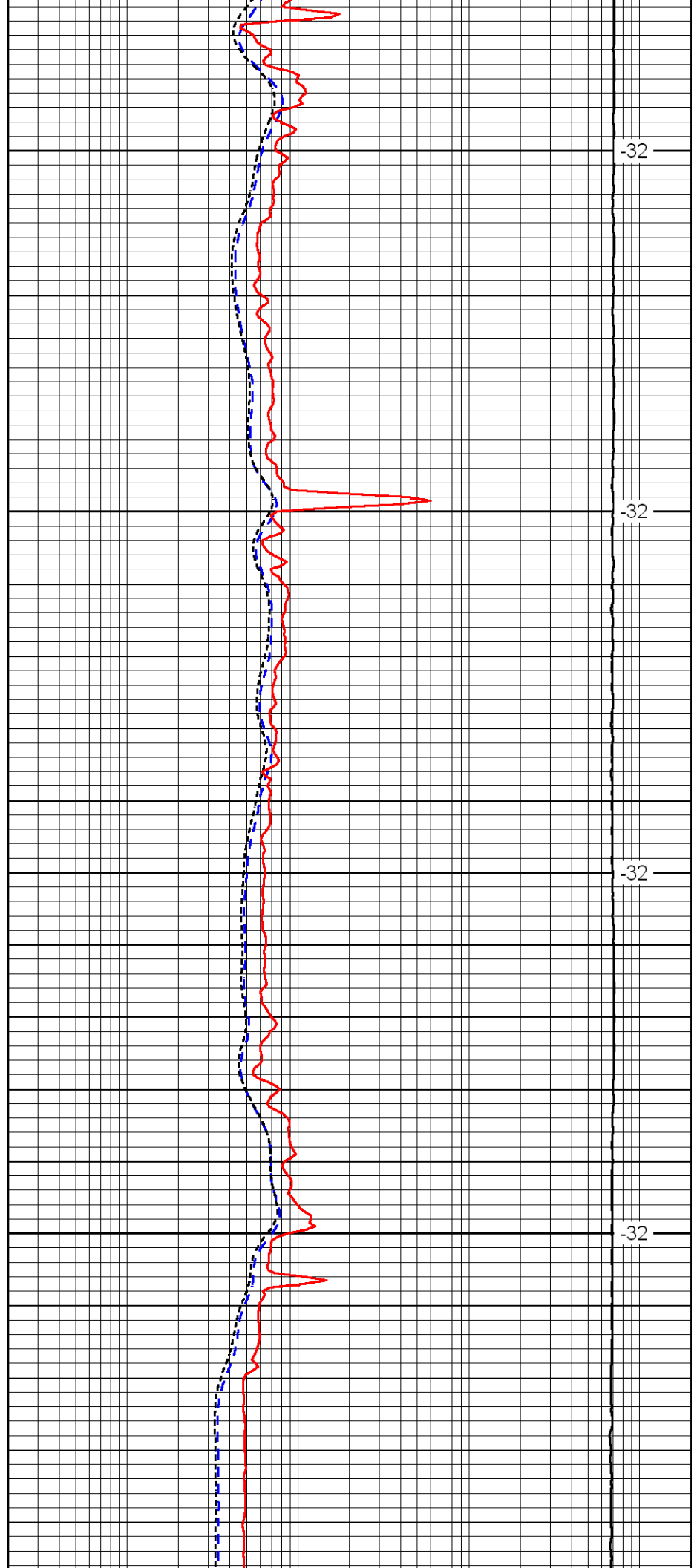


5150

5200

5250

5300

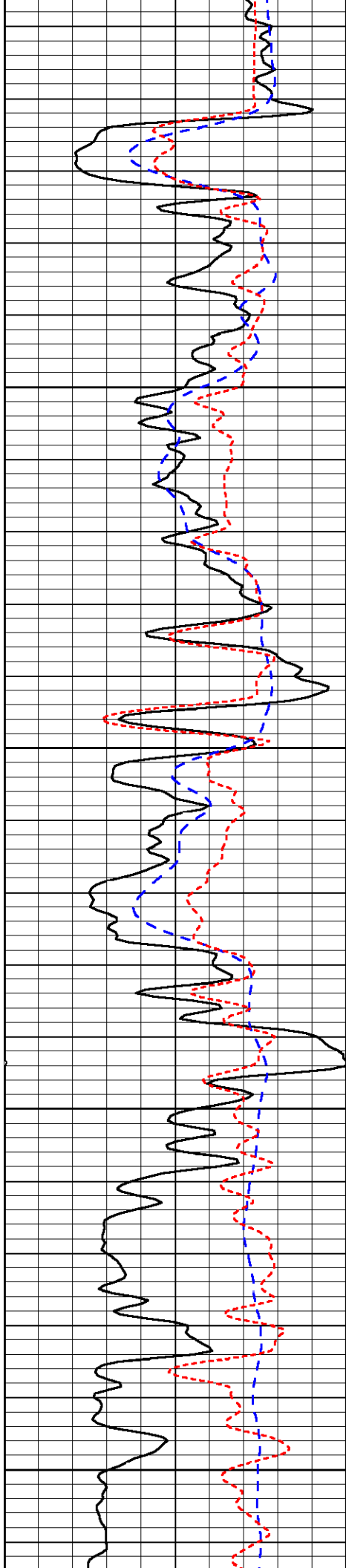


-32

-32

-32

-32



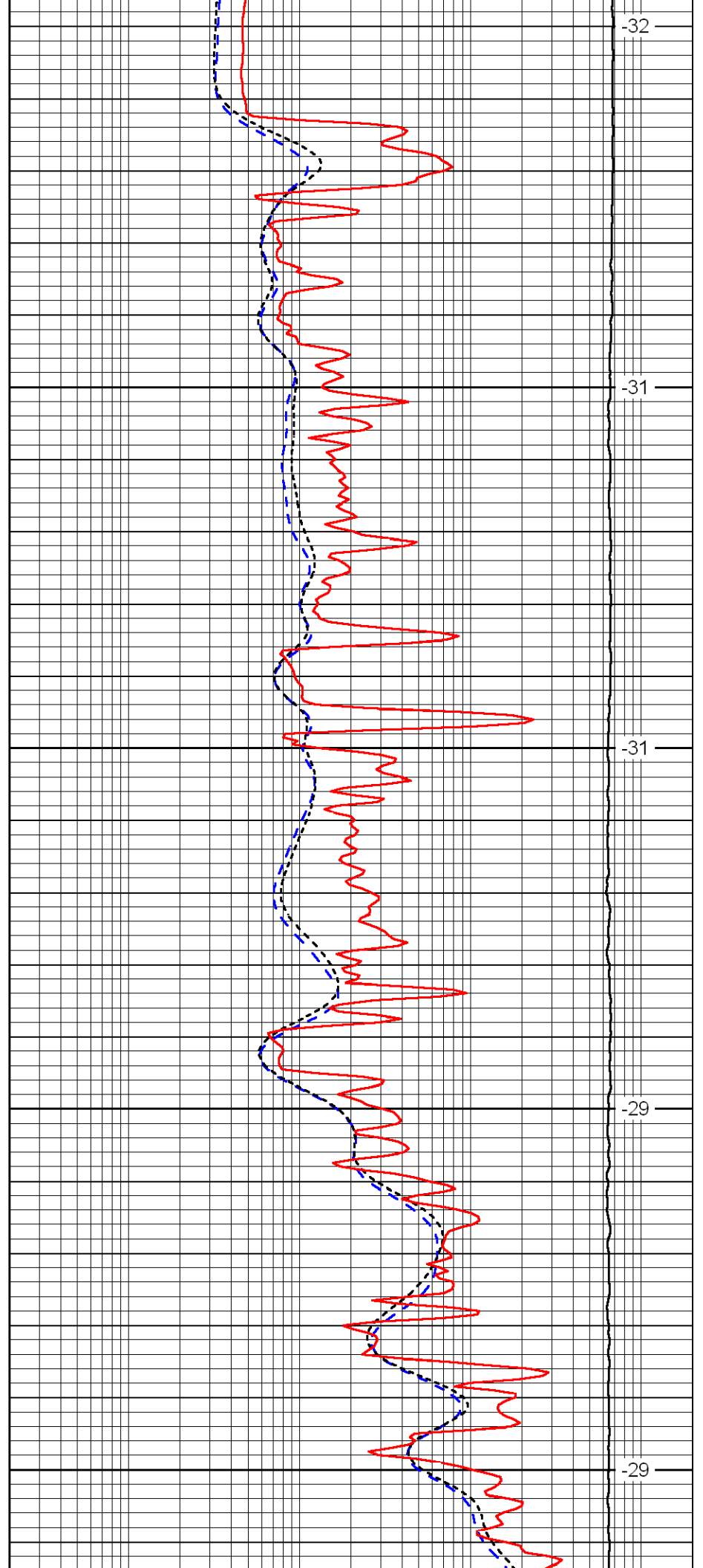
5350

5400

5450

5500

5550



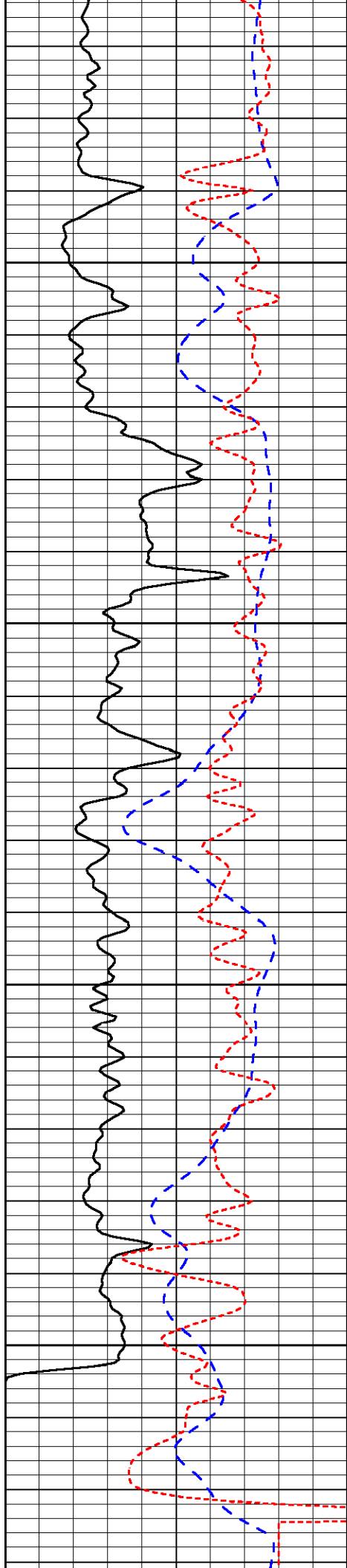
-32

-31

-31

-29

-29

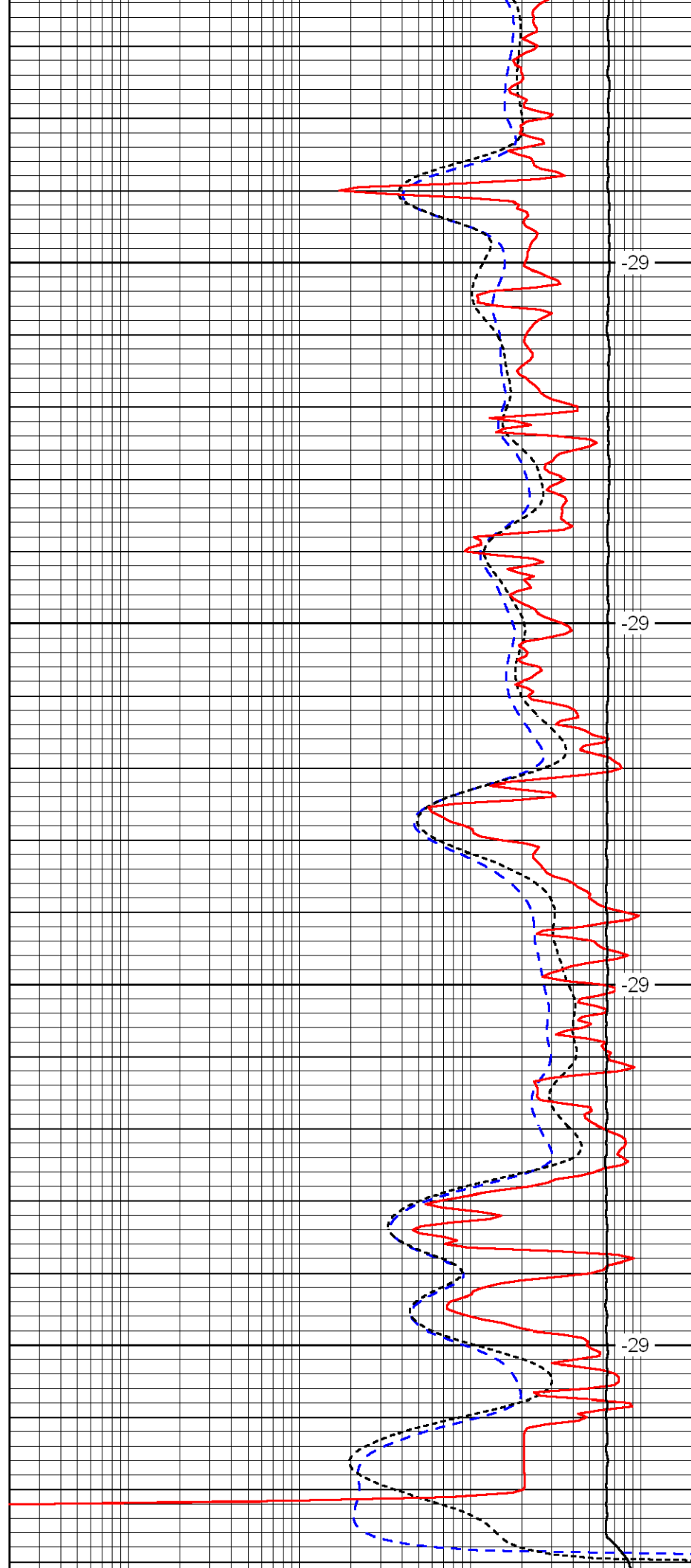


5600

5650

5700

5750

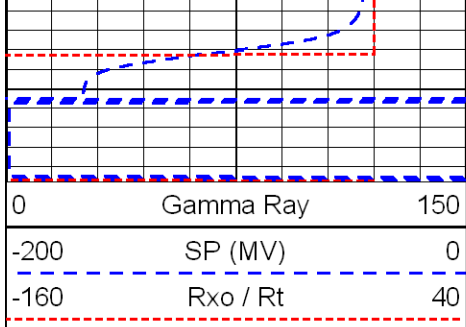


-29

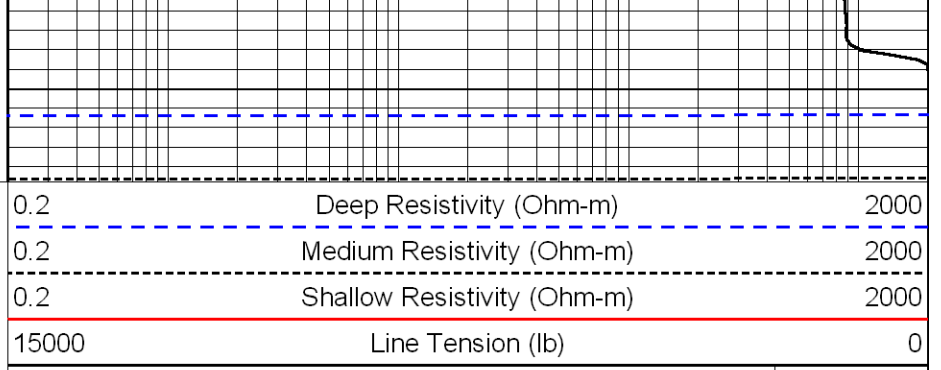
-29

-29

-29



5000



LSPD
(ft/min)