



Dual Compensated Porosity Log

DIGITAL LOG (785) 625-3858

API No. 15-187-21,147-00-00

Company **Berexco, Inc.**
 Well **Seyb No. 1-29**
 Field **Wildcat**
 County **Stanton** State **Kansas**

Location **335' FNL & 932' FWL**

Sec: **29** Twp: **29S** Rge: **42W**

Other Services
DIL
MEL/BHCS

Permanent Datum **Ground Level** Elevation **3551**
 Log Measured From **Kelly Bushing** 13 Ft. Above Perm. Datum
 Drilling Measured From **Kelly Bushing**

K.B. 3564
 D.F. 3551
 G.L. 3551

Date **02/27/2009**

Run Number **One**

Type Log **CNL / CDL**

Depth Driller **5780**

Depth Logger **5778**

Bottom Logged Interval **5757**

Top Logged Interval **2800**

Type Fluid In Hole **Chemical**

Salinity, PPM CL **700**

Density **9.2**

Level **Full**

Max. Rec. Temp. F **136**

Operating Rig Time **6 Hours**

Equipment -- Location **10 Hays**

Recorded By **Jason Wellbrock**

Witnessed By **Byron Bynog**

Run No	Bit	Borehole Record		Casing Record	
		From	To	From	To
1	12.25	00	1582	8.625	24#
2	7.875	1582	5780		

<<< Fold Here >>>

All interpretations are opinions based on inferences from electrical or other measurements and we cannot and do not guarantee the accuracy or correctness of any interpretation, and we shall not, except in the case of gross or willful negligence on our part, be liable or responsible for any loss, costs, damages, or expenses incurred or sustained by anyone resulting from any interpretation made by any of our officers, agents or employees. These interpretations are also subject to our general terms and conditions set out in our current Price Schedule.

Comments

Thank you for using Log-Tech, Inc.
 (785) 625-3858

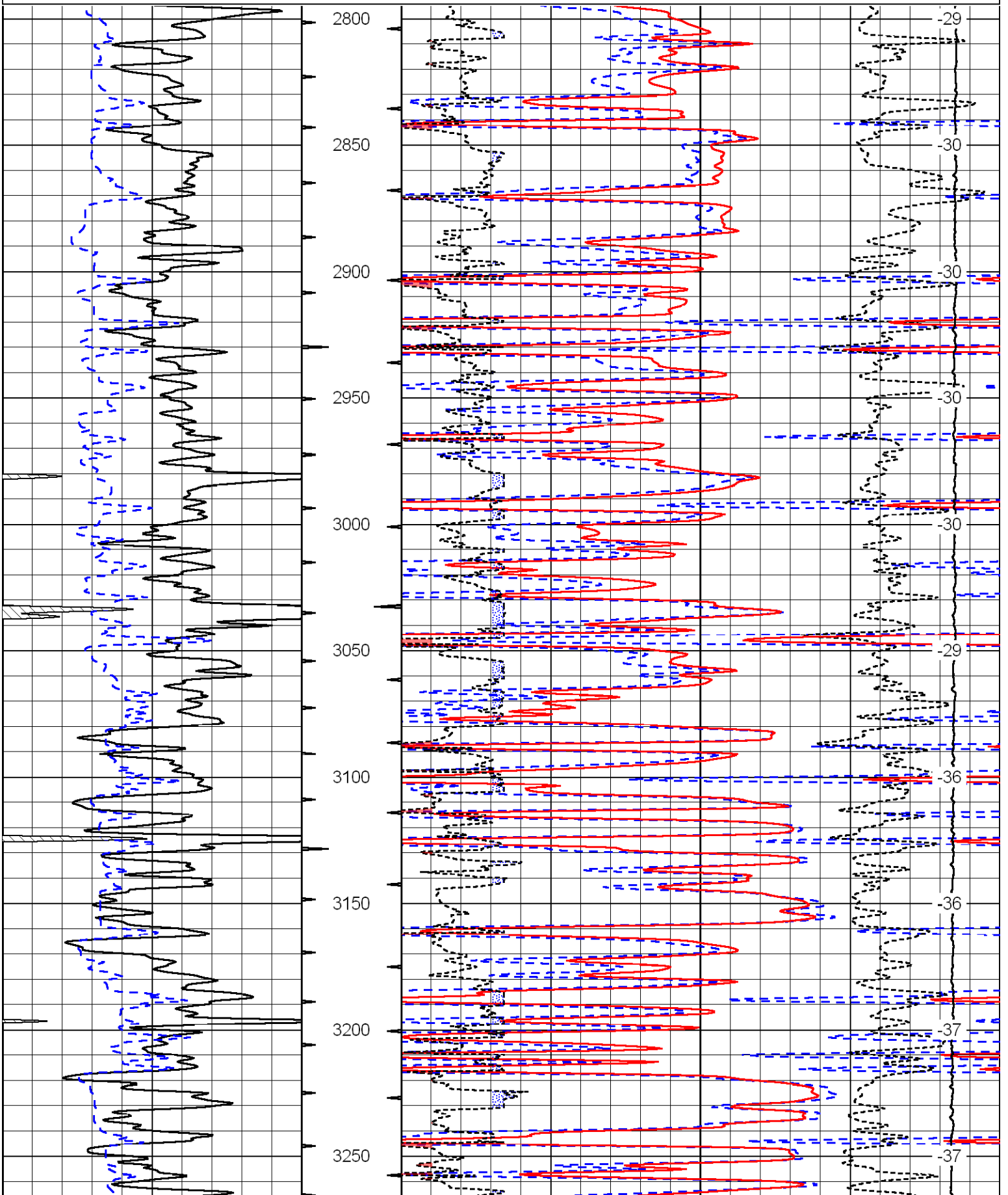
Mantor W 3, N Into

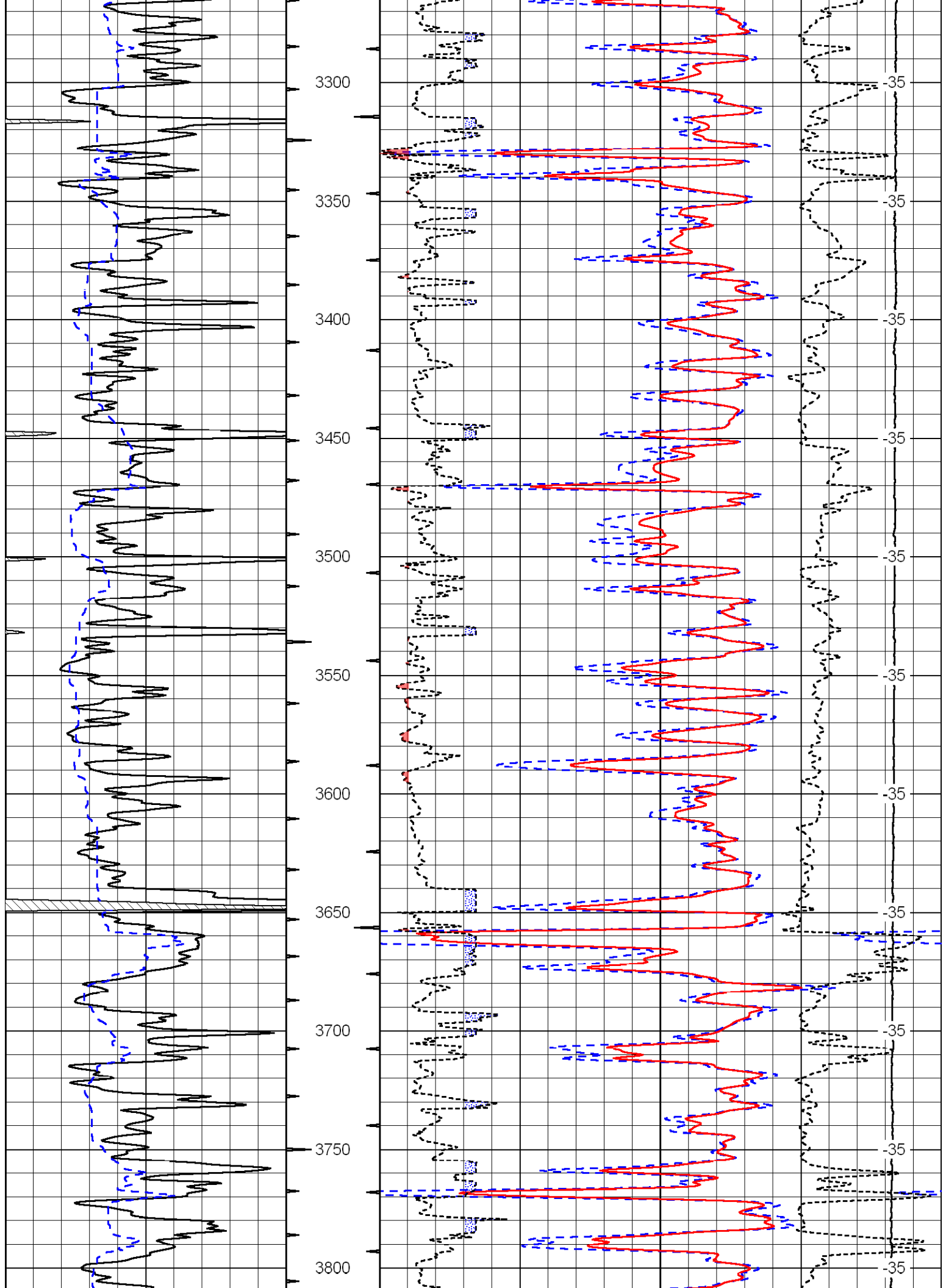
Database File: c:\warrior\data\berexco_seyb no. 1-29\berexhd.db
 Dataset Pathname: dil/ber2in
 Presentation Format: cdl
 Dataset Creation: Fri Feb 27 15:22:42 2009
 Charted by: Depth in Feet scaled 1:600

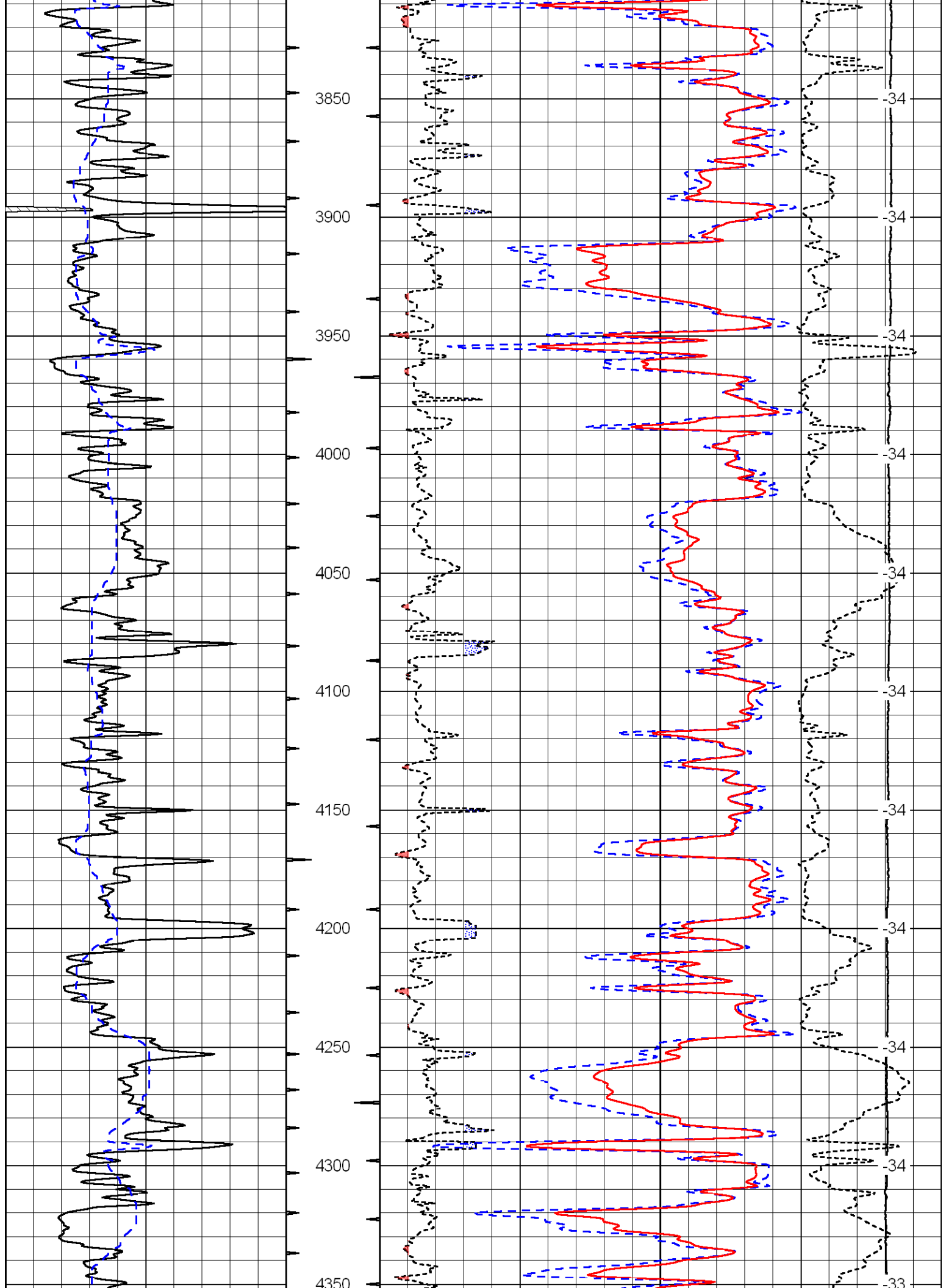
0	Gamma Ray	150
6	Caliper (in)	16

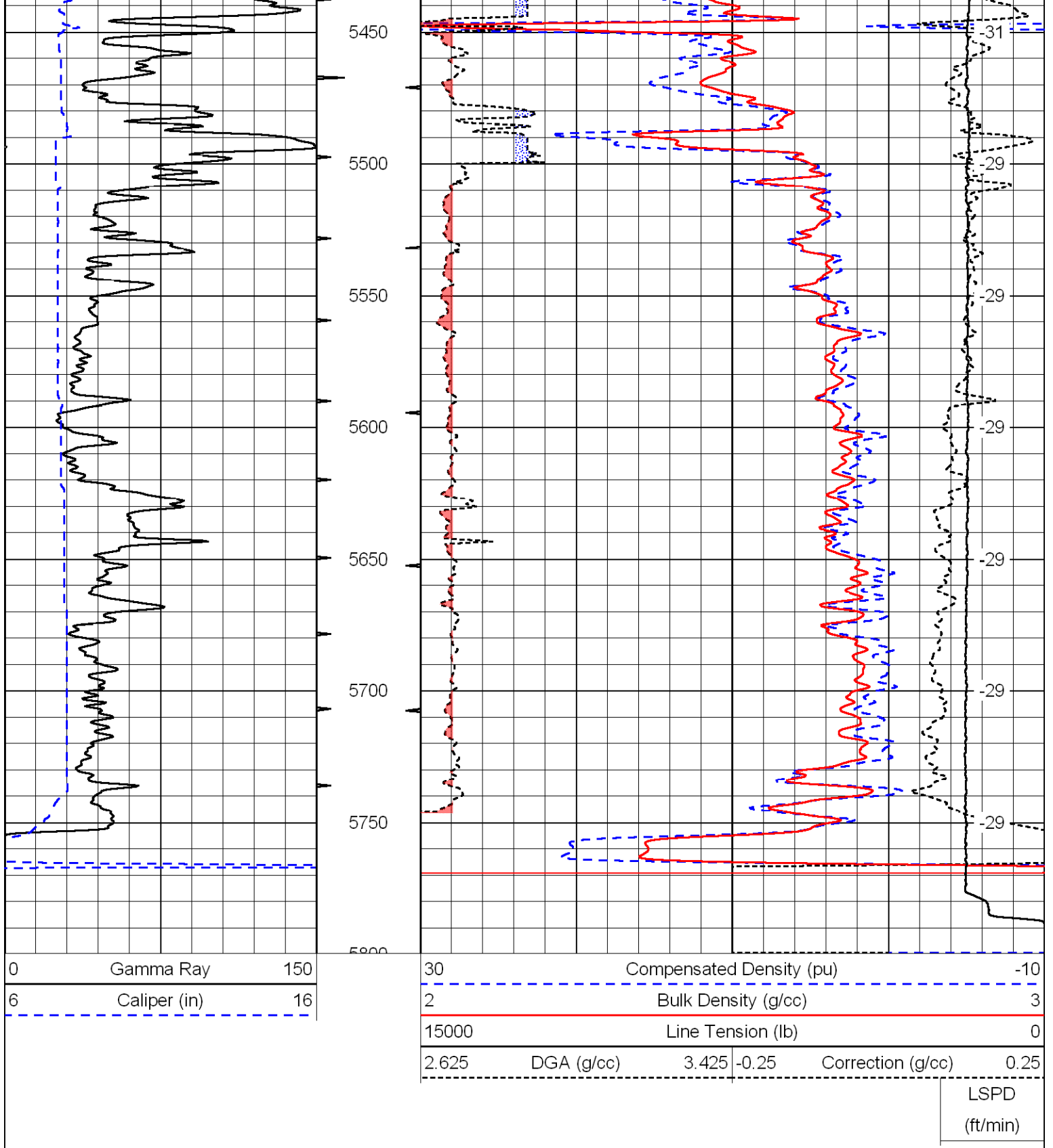
30	Compensated Density (pu)			-10	
2	Bulk Density (g/cc)			3	
15000	Line Tension (lb)			0	
2.625	DGA (g/cc)	3.425	-0.25	Correction (g/cc)	0.25

LSPD
(ft/min)

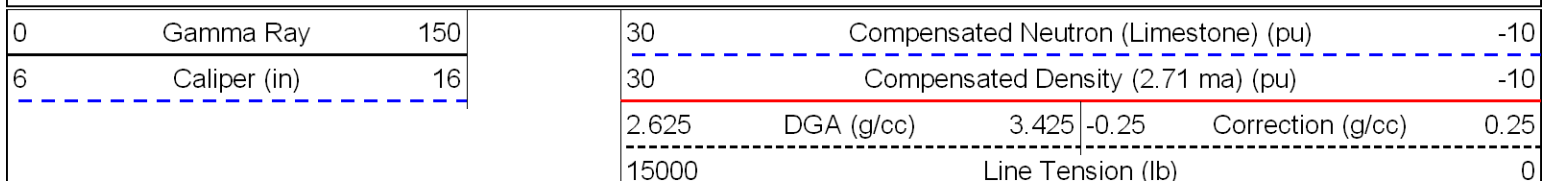




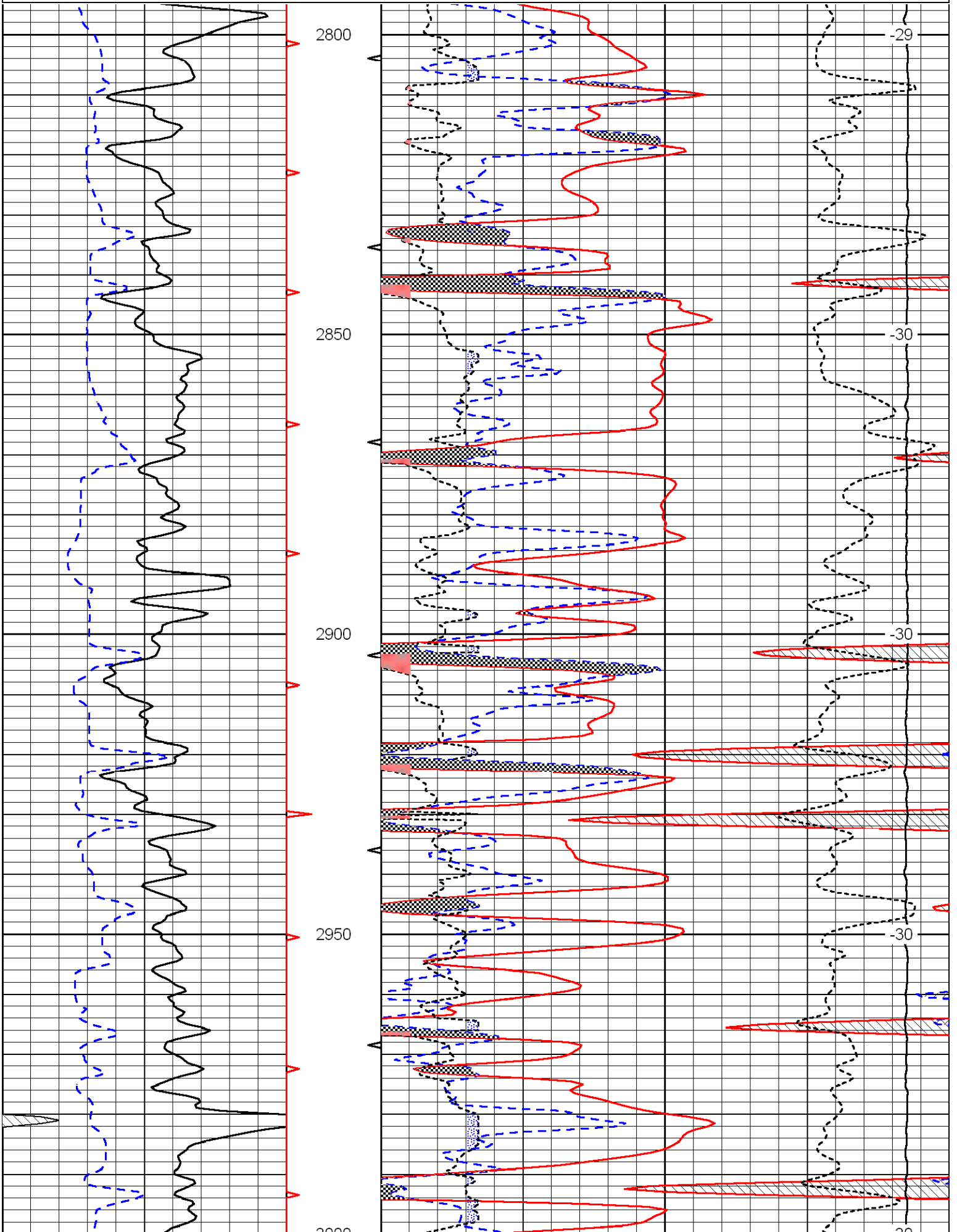


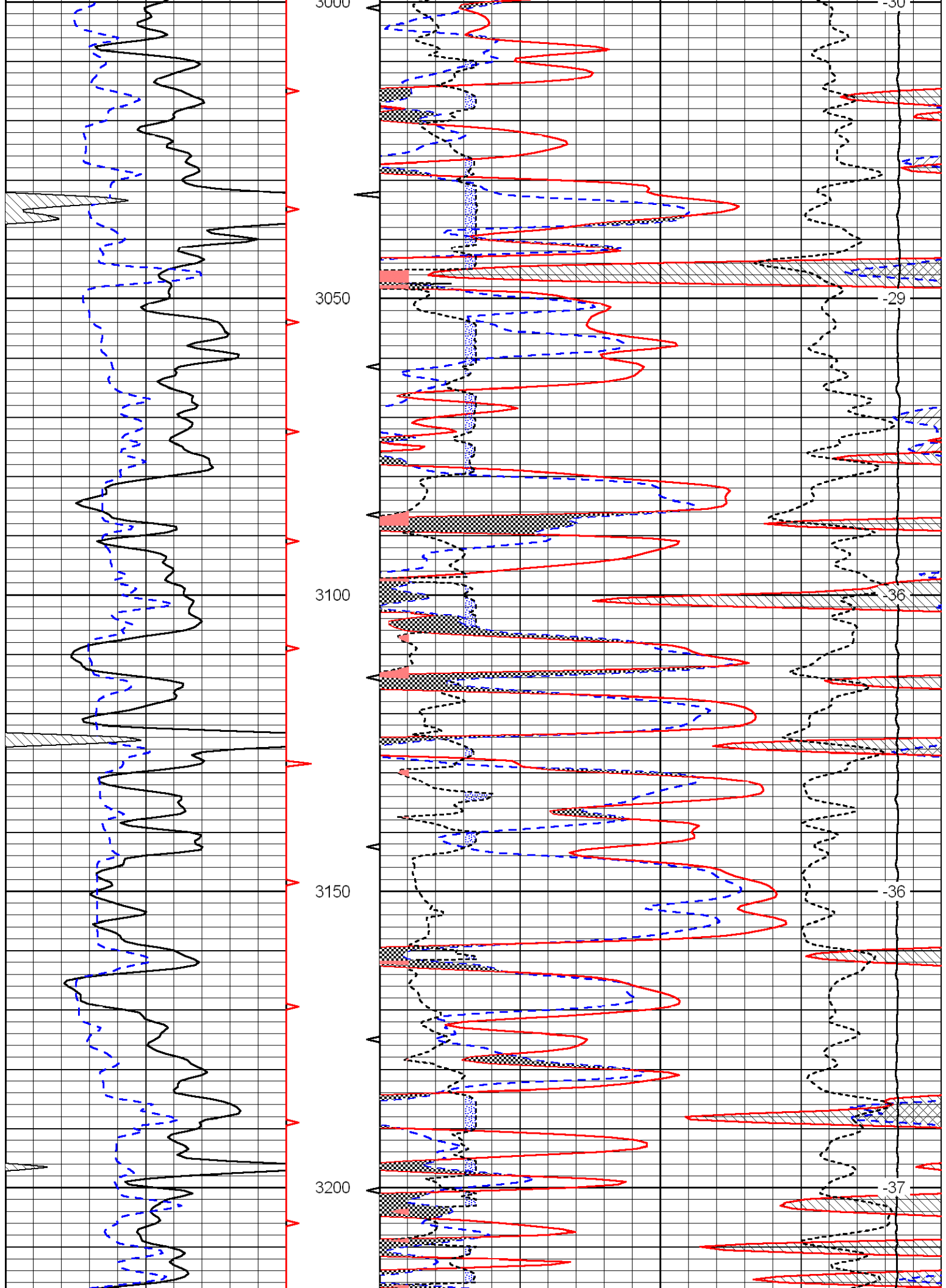


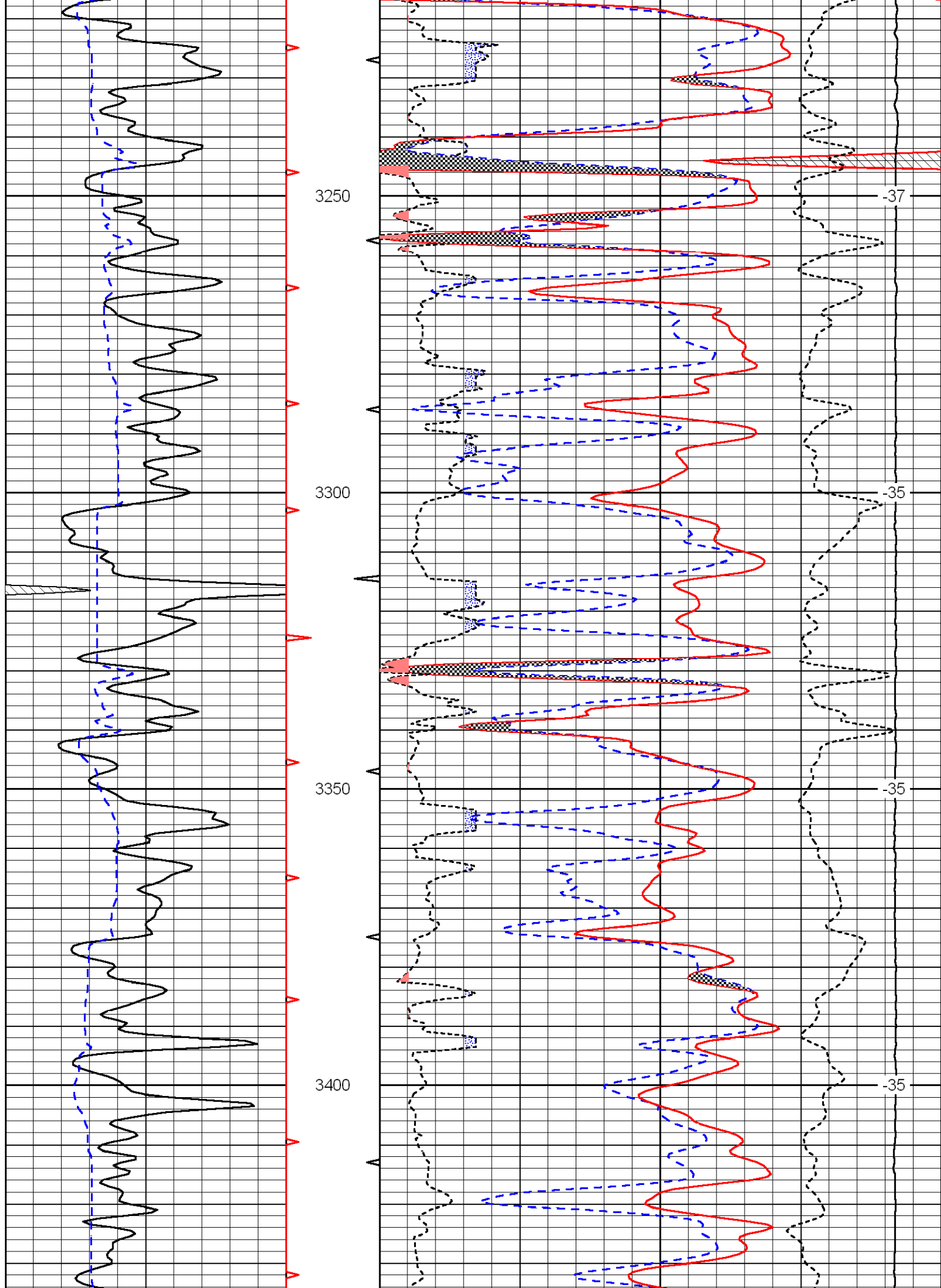
Database File: c:\warrior\data\berexco_seyb no. 1-29\berexhd.db
 Dataset Pathname: dil/ber2in
 Presentation Format: cndlspec
 Dataset Creation: Fri Feb 27 15:22:42 2009
 Charted by: Depth in Feet scaled 1:240

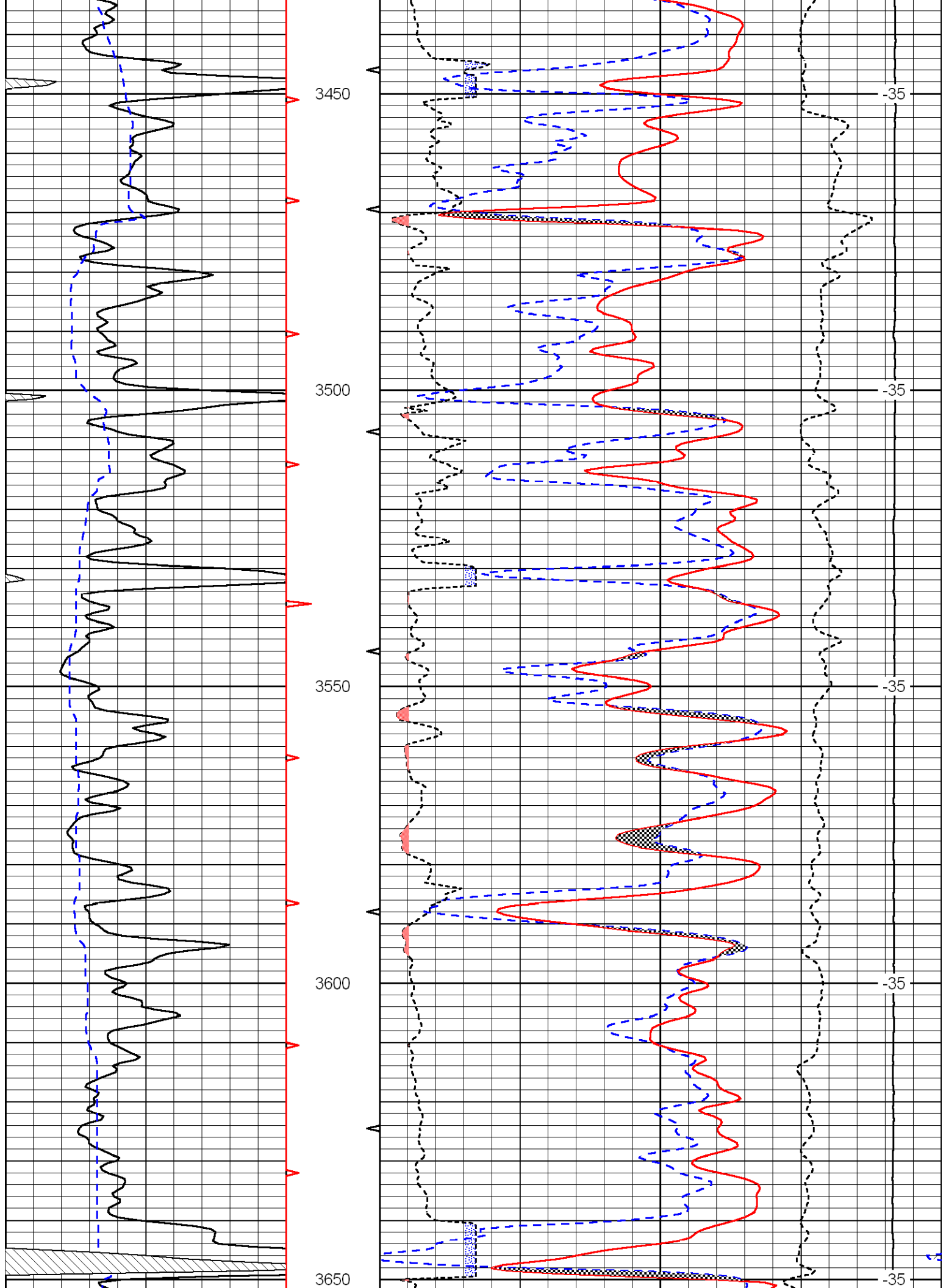


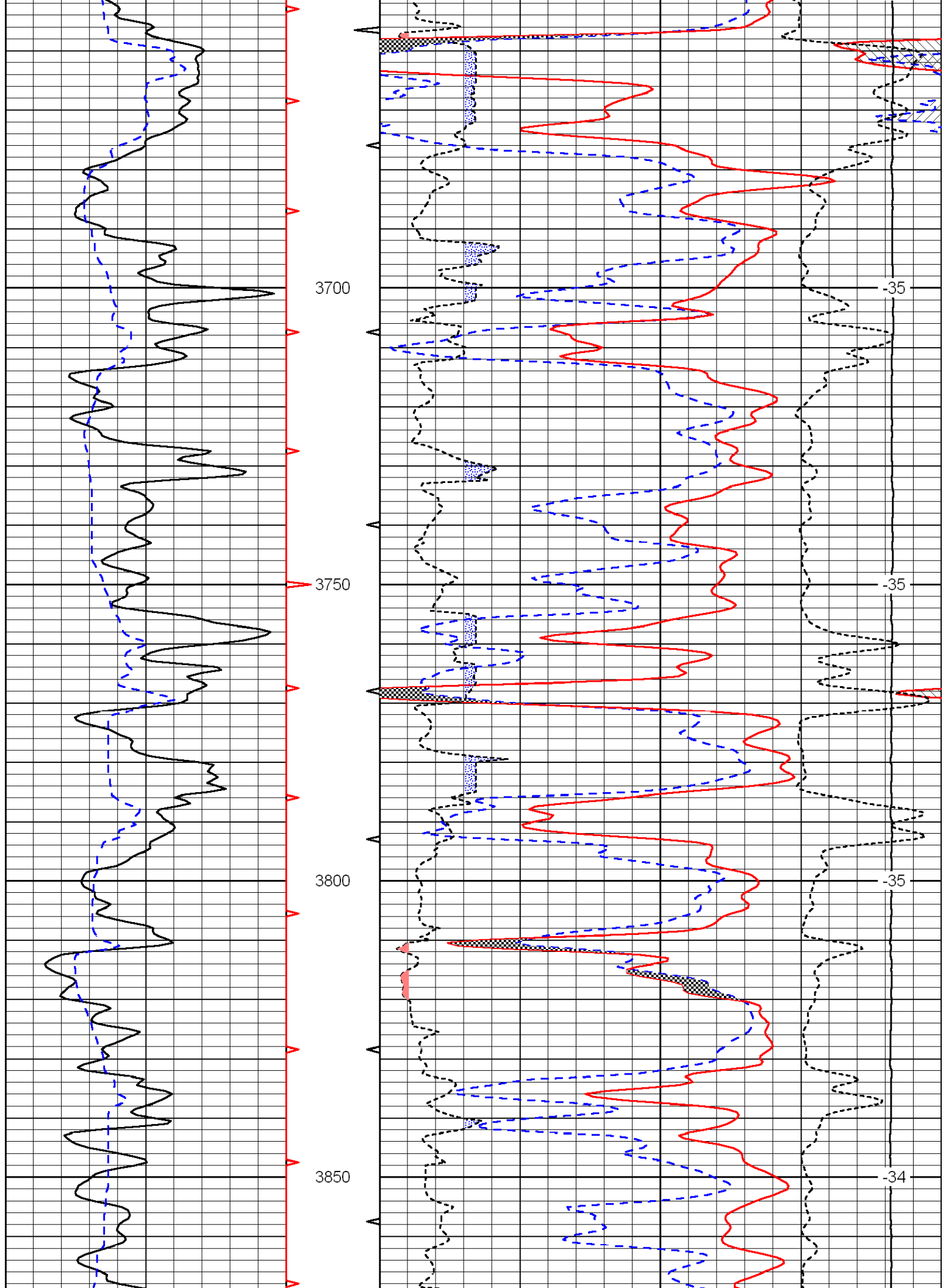
LSPD
(ft/min)

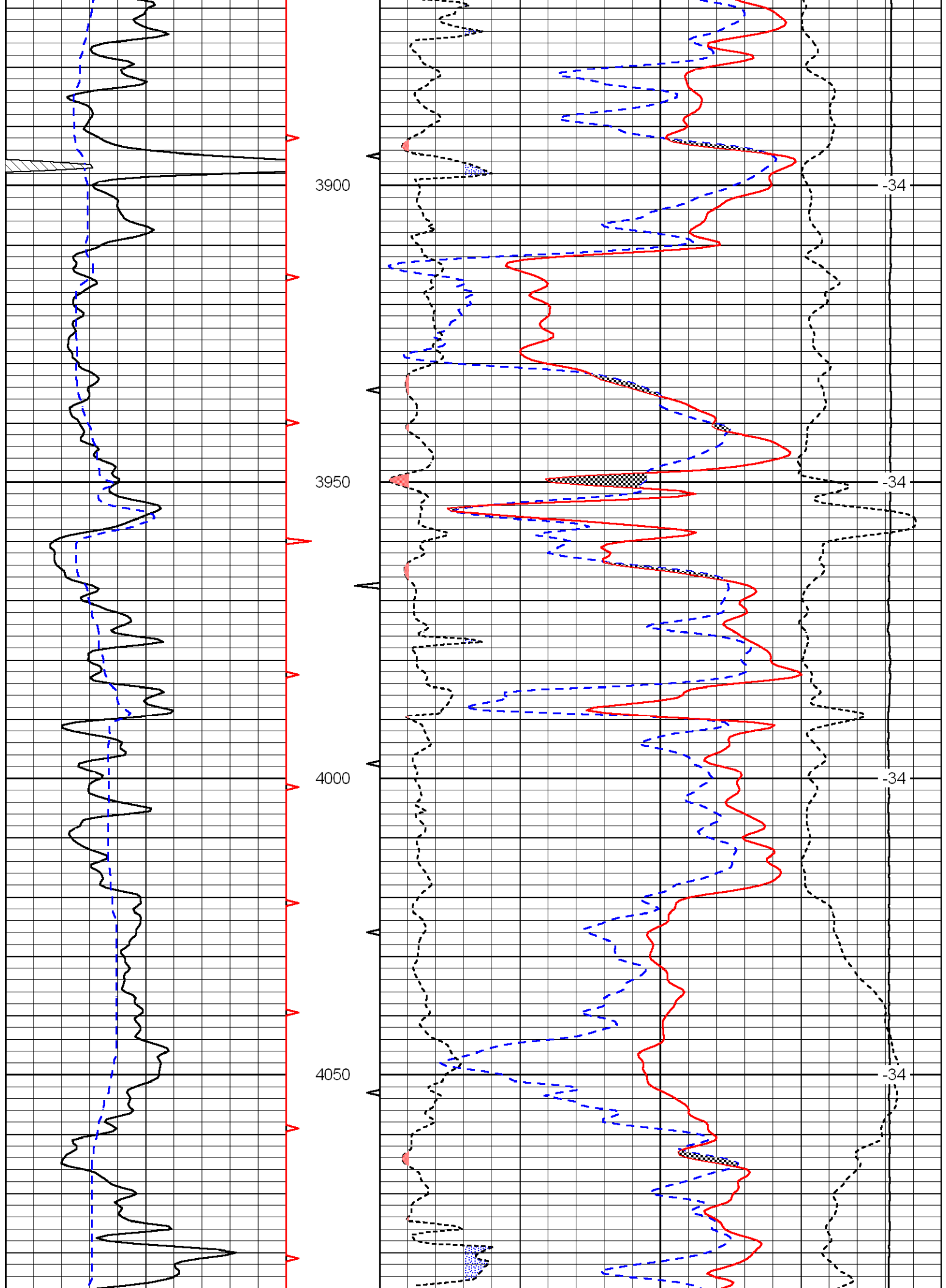


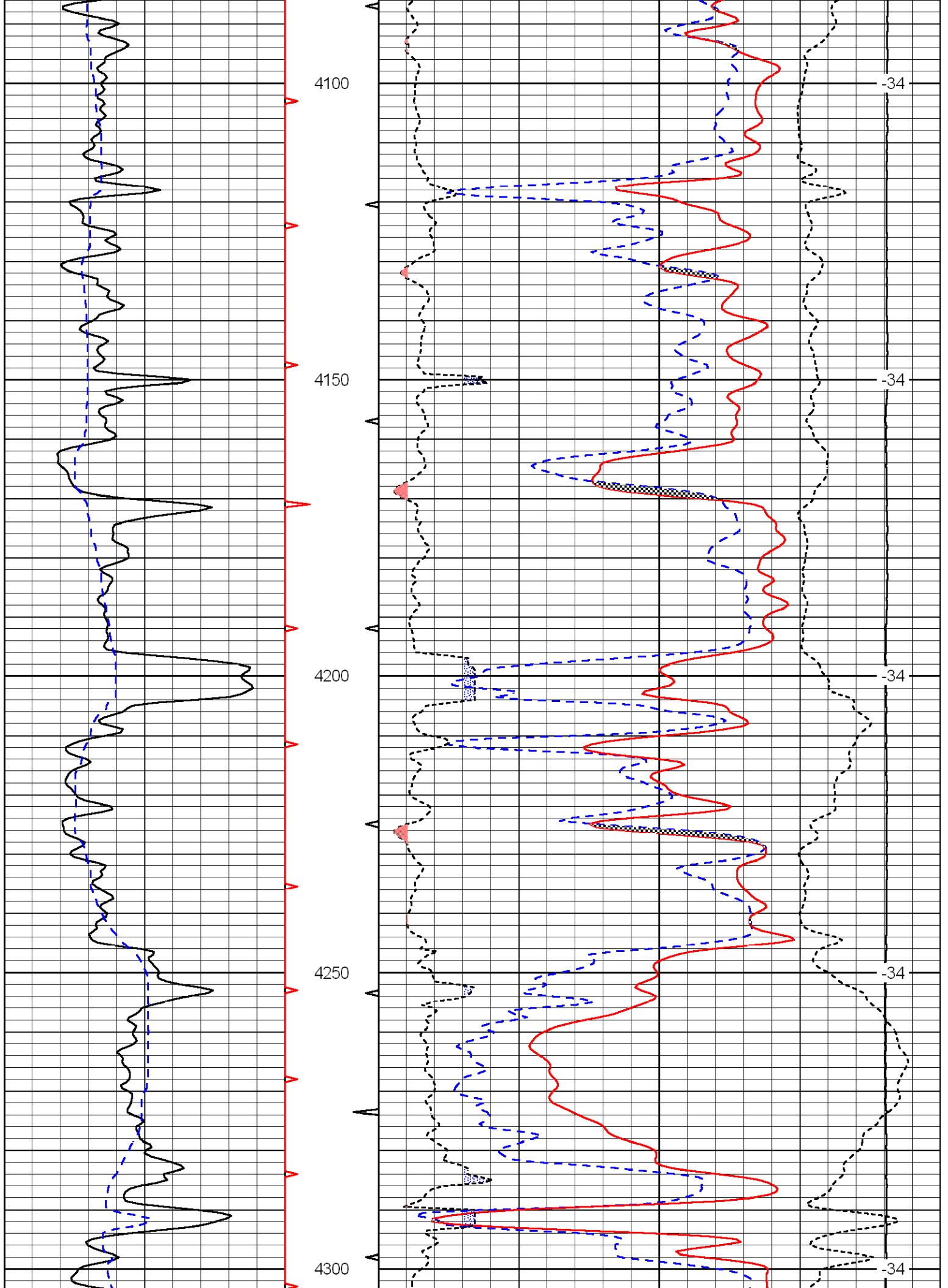


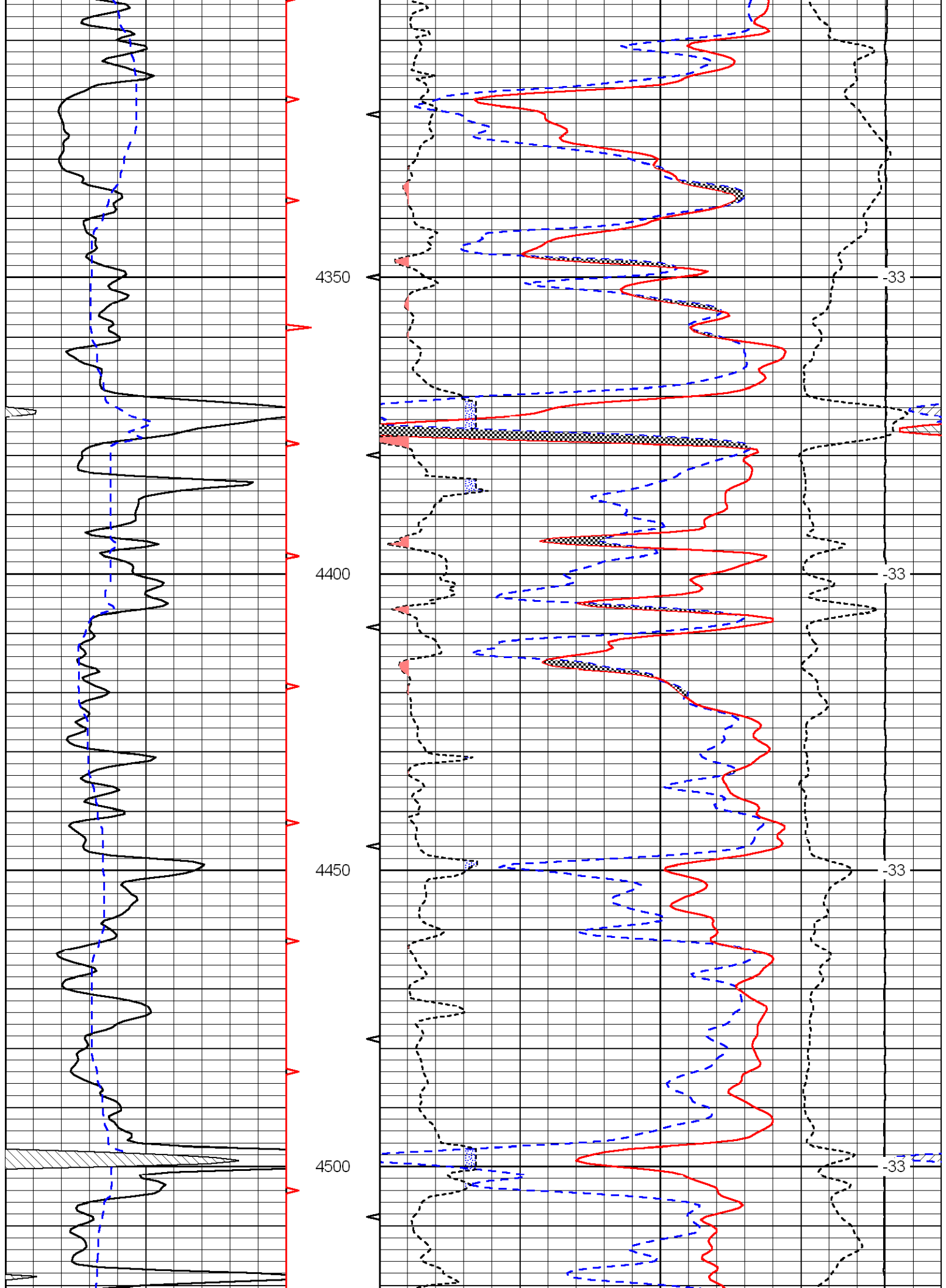


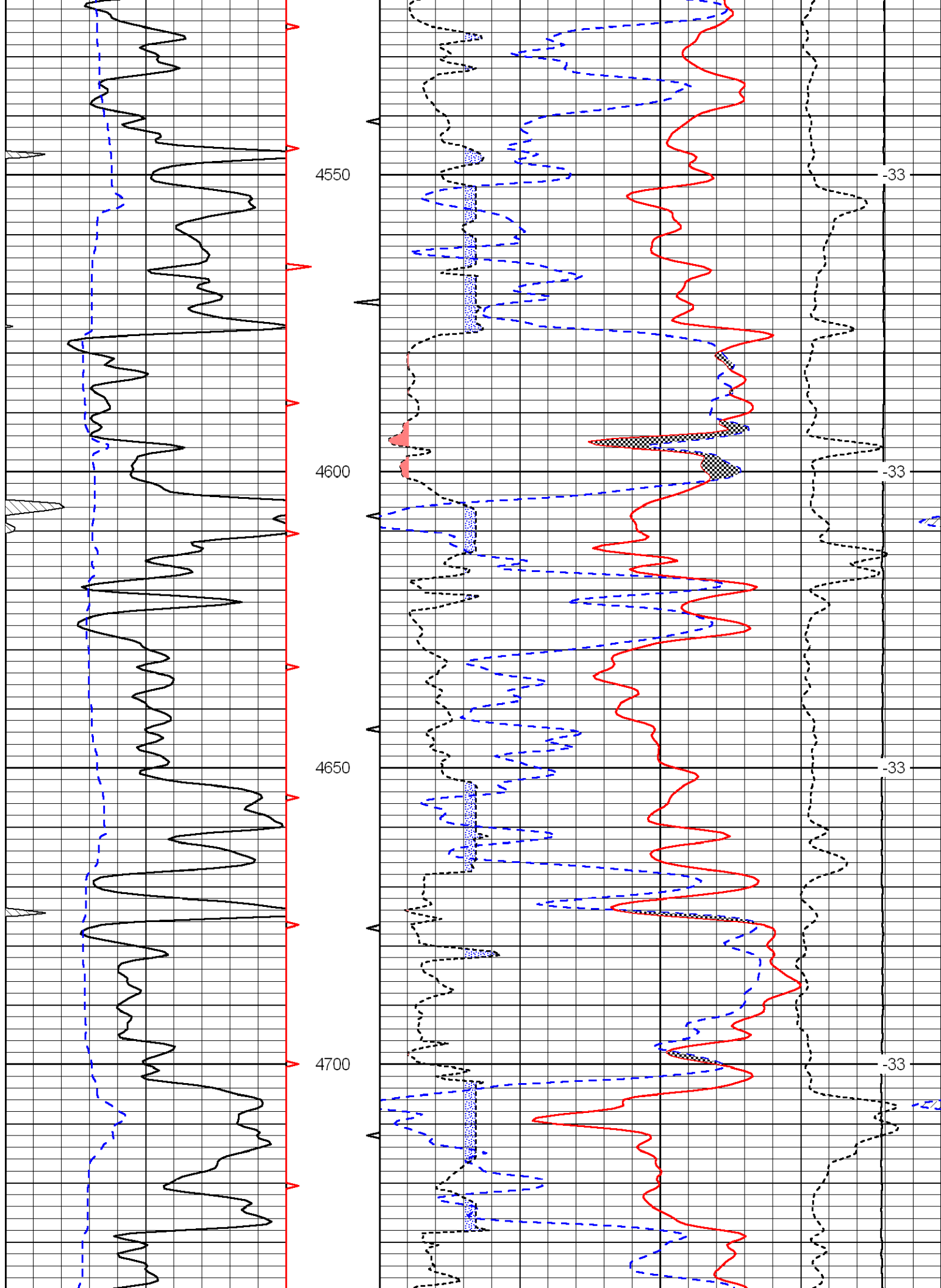


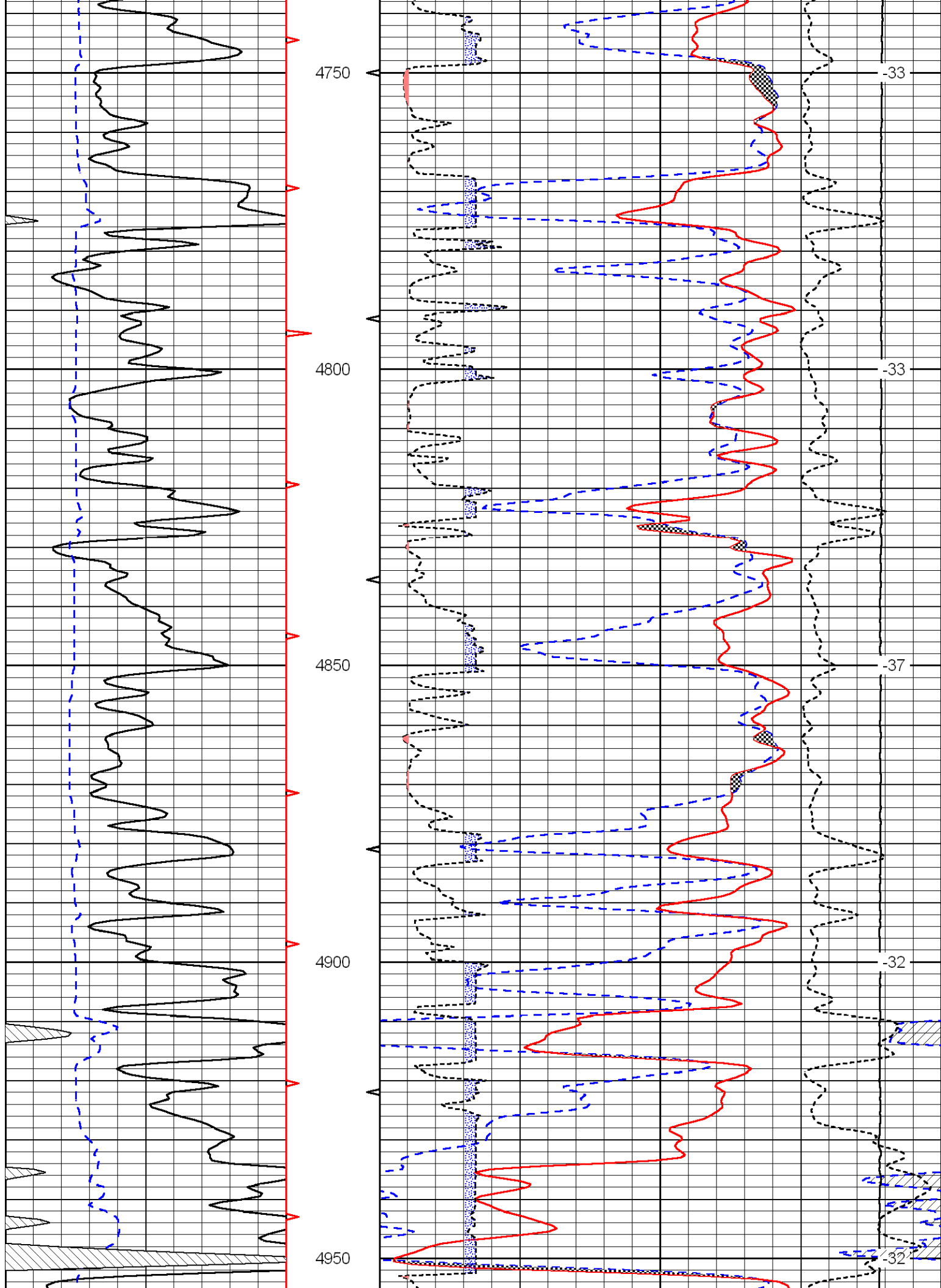


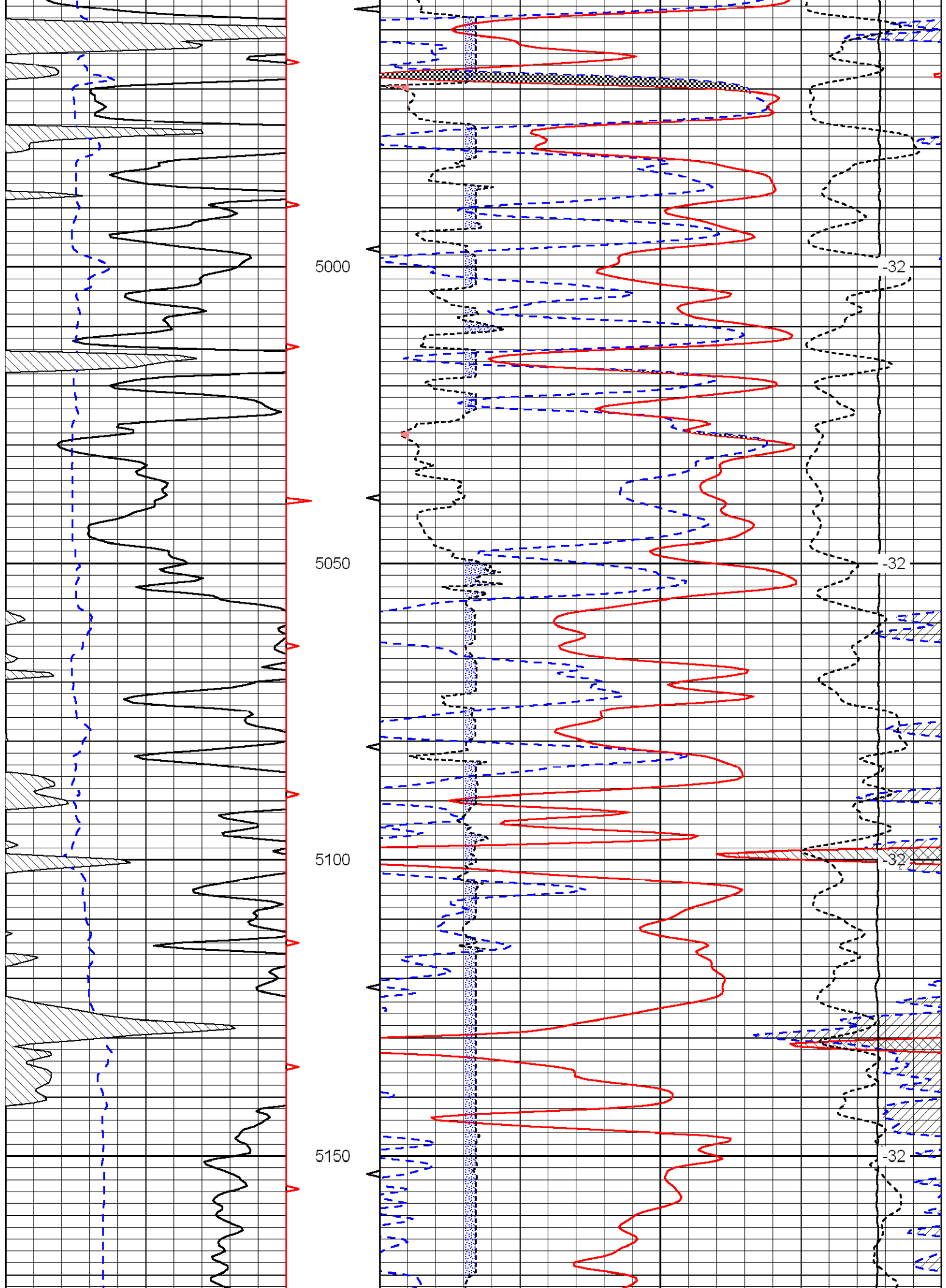


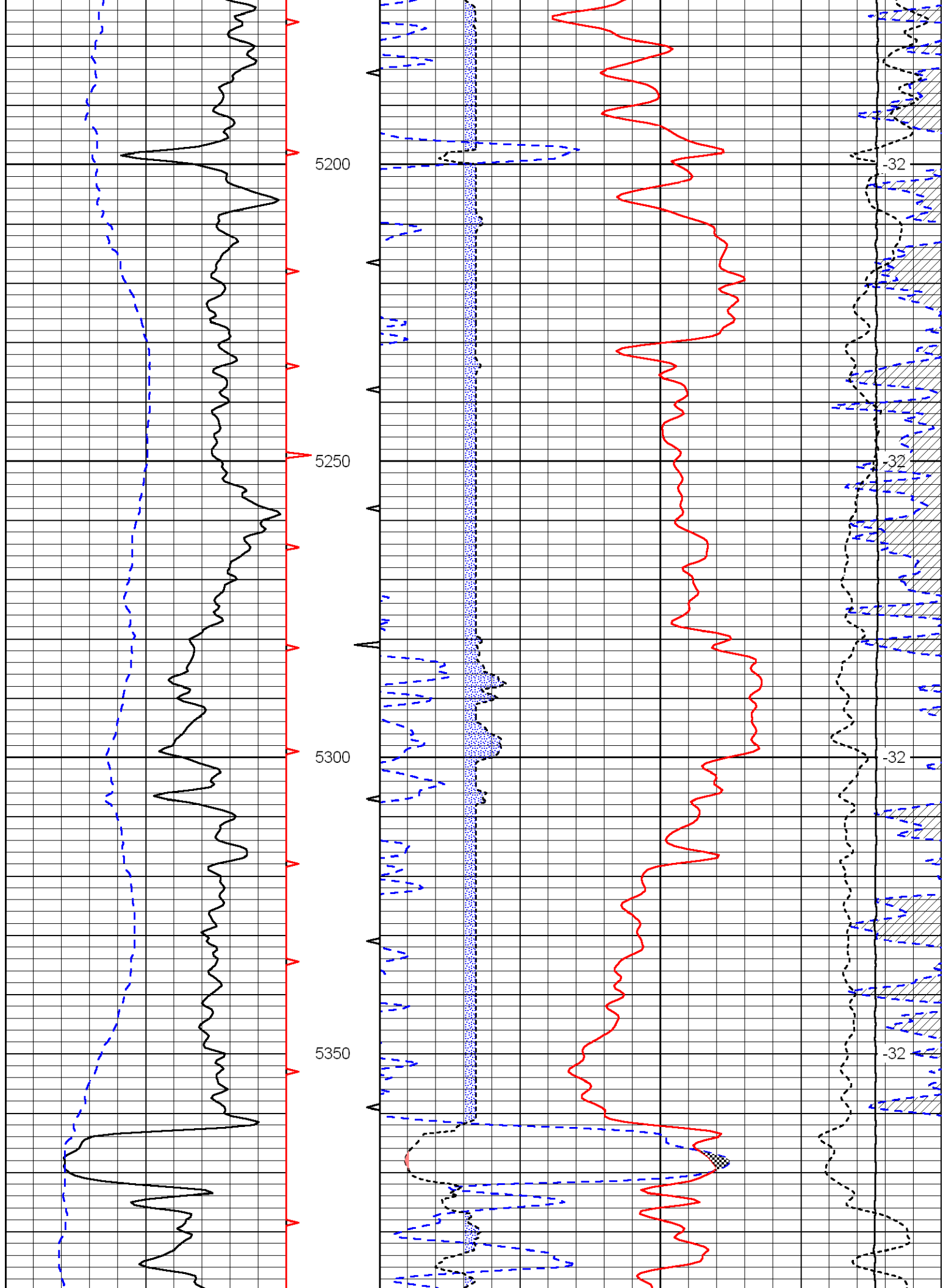


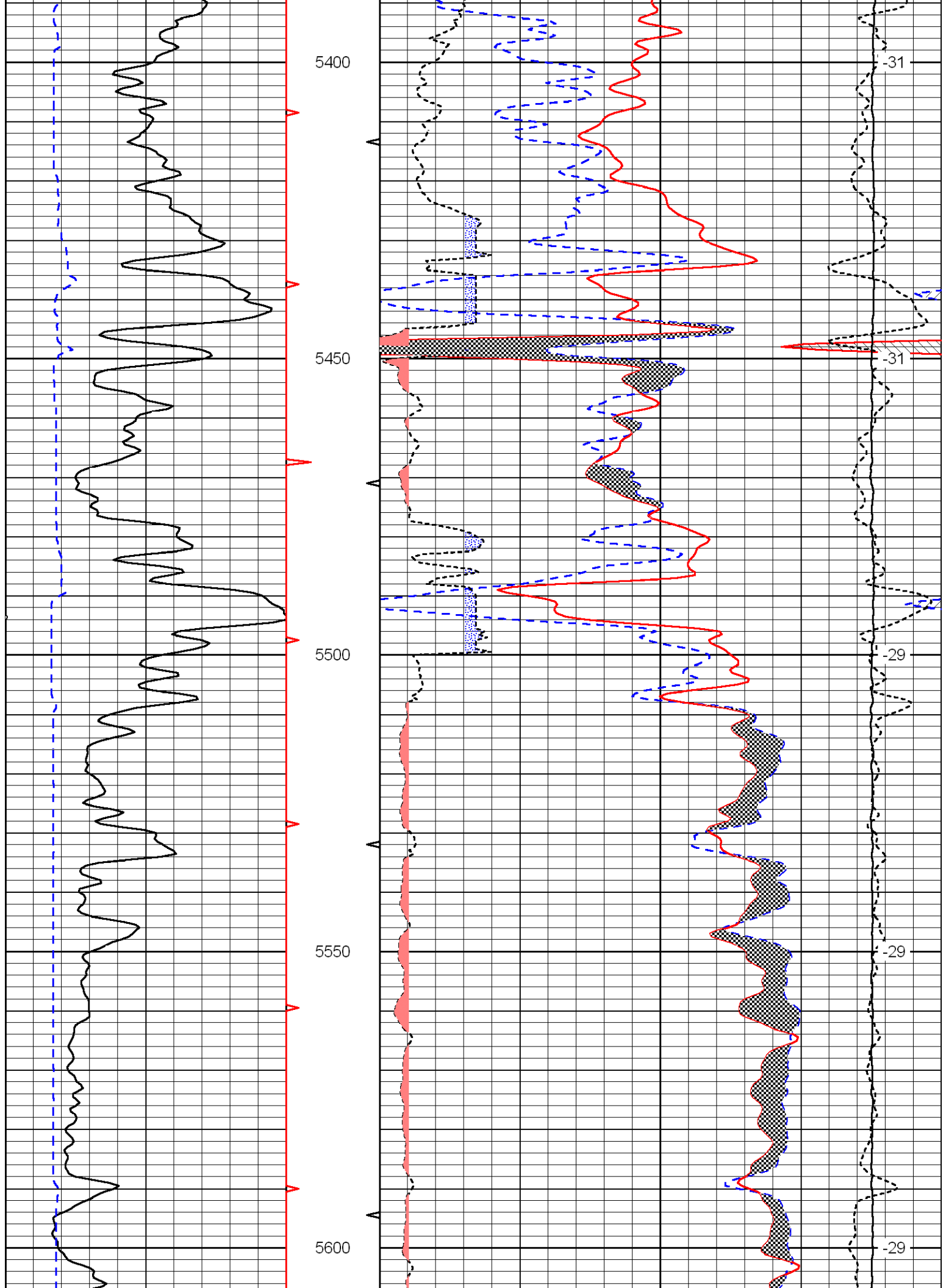


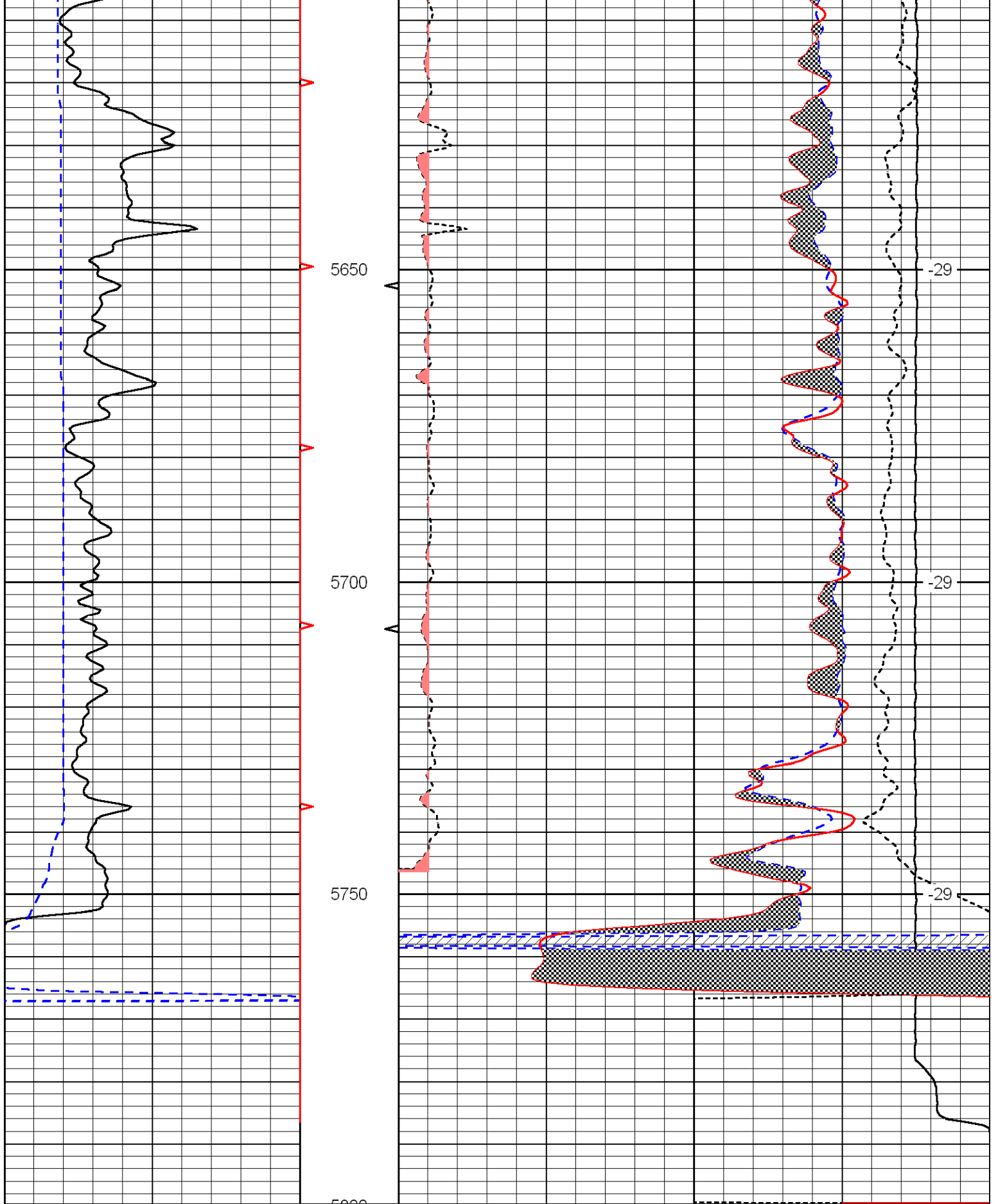












0	Gamma Ray	150
6	Caliper (in)	16

30	Compensated Neutron (Limestone) (pu)			-10	
30	Compensated Density (2.71 ma) (pu)			-10	
2.625	DGA (g/cc)	3.425	-0.25	Correction (g/cc)	0.25
15000	Line Tension (lb)			0	

