



# Microresistivity Log

**DIGITAL LOG (785) 625-3858**

API No.	15-167-23,562-00-00		
Company	John O Farmer, Inc.		
Well	Waymaster No. 1		
Field	Hall-Gurney		
County	Russell	State	Kansas
Location	840' FSL & 2390' FWL		
Sec: 2	Twp: 15 S	Rge: 13 W	
Permanent Datum	Ground Level	Elevation	1791
Log Measured From	Kelly Bushing	8 Ft. Above Perm. Datum	
Drilling Measured From	Kelly Bushing		
		Other Services	CNL/CDL DIL
		Elevation	K.B. 1799 D.F. 1791 G.L. 1791

Date	2/20/2009	
Run Number	Two	
Depth Driller	3350	
Depth Logger	3350	
Bottom Logged Interval	3349	
Top Log Interval	2400	
Casing Driller	8.625 @ 413	
Casing Logger	411	
Bit Size	7.875	
Type Fluid in Hole	Chemical	
Salinity, ppm CL	6,000	
Density / Viscosity	9.3	46
pH / Fluid Loss	9.5	10.4
Source of Sample	Flowline	
Rm @ Meas. Temp	.30 @	58
Rmf @ Meas. Temp	.23 @	58
Rmc @ Meas. Temp	.41 @	58
Source of Rmf / Rmc	Charts	
Rm @ BHT	.16 @	112
Operating Rig Time	4 Hours	
Max Rec. Temp. F	112	
Equipment Number	10	
Location	Hays	
Recorded By	K. Bange	
Witnessed By	Brad Hutchison	
		B. Reiners

<<< Fold Here >>>

All interpretations are opinions based on inferences from electrical or other measurements and we cannot and do not guarantee the accuracy or correctness of any interpretation, and we shall not, except in the case of gross or willful negligence on our part, be liable or responsible for any loss, costs, damages, or expenses incurred or sustained by anyone resulting from any interpretation made by any of our officers, agents or employees. These interpretations are also subject to our general terms and conditions set out in our current Price Schedule.

### Comments

Thank you for using Log-Tech, Inc.  
(785) 625-3858

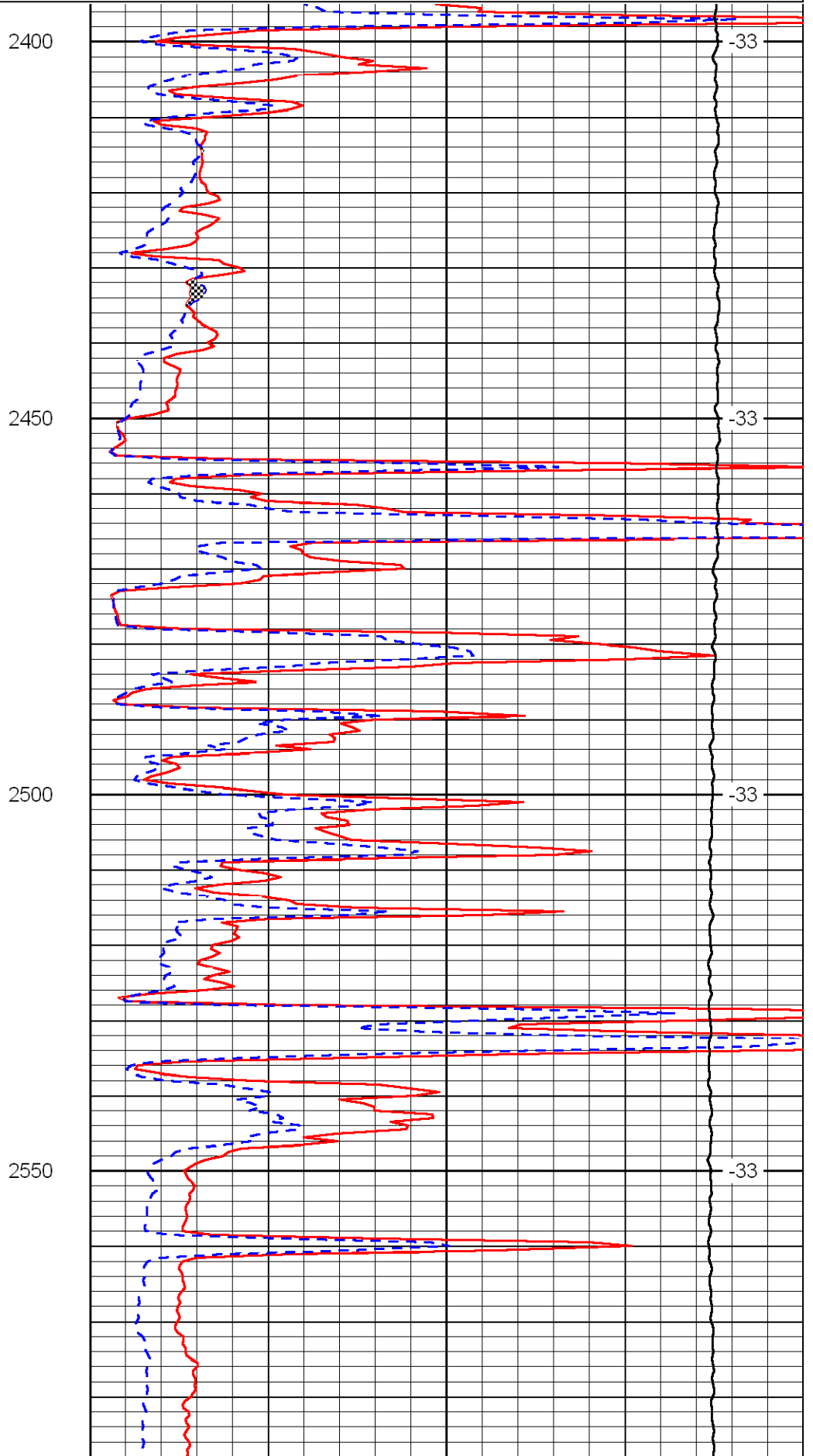
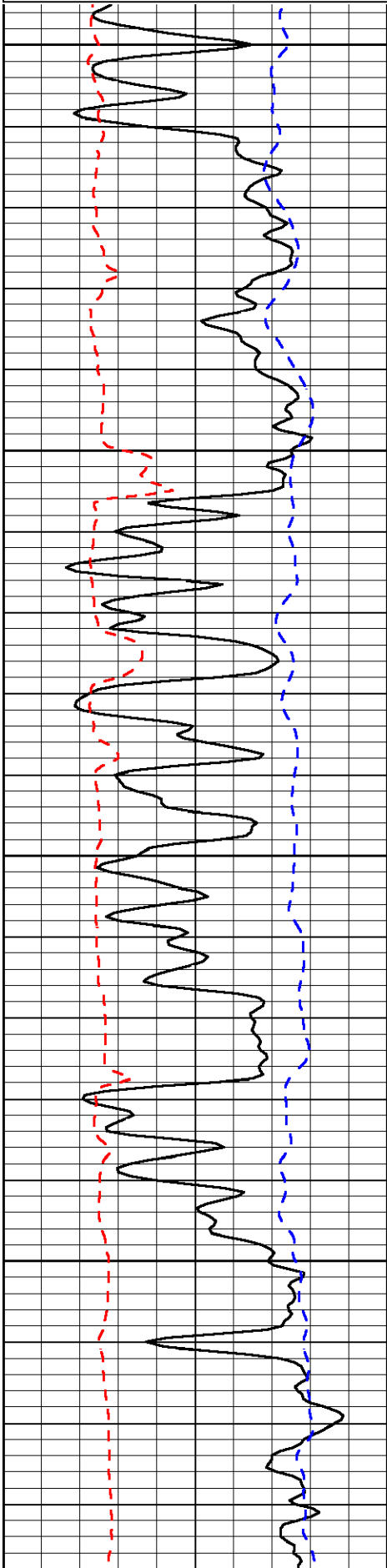
Bunker Hill, S. to stop sign, right follow blacktop (7.8 miles from Bunker Hill), N into

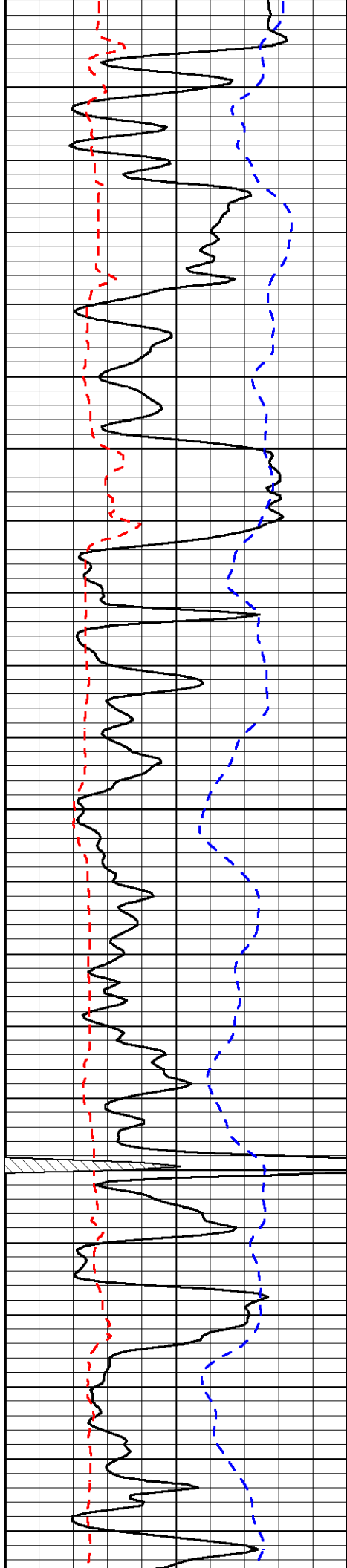
Database File: c:\warrior\data\farmer\_waymaster no. 1\farmhd.db  
 Dataset Pathname: dil/farm2in  
 Presentation Format: micro  
 Dataset Creation: Fri Feb 20 04:00:34 2009  
 Charted by: Depth in Feet scaled 1:240

0	Gamma Ray (GAPI)	150
6	Micro Log Caliper (GAPI)	16
-200	SP (MV)	0

0	Micro Inverse 1 X 1 (Ohm-m)	40
0	Micro Normal 2" (Ohm-m)	40
10000	Line Weight (lb)	0

LSPD  
(ft/min)





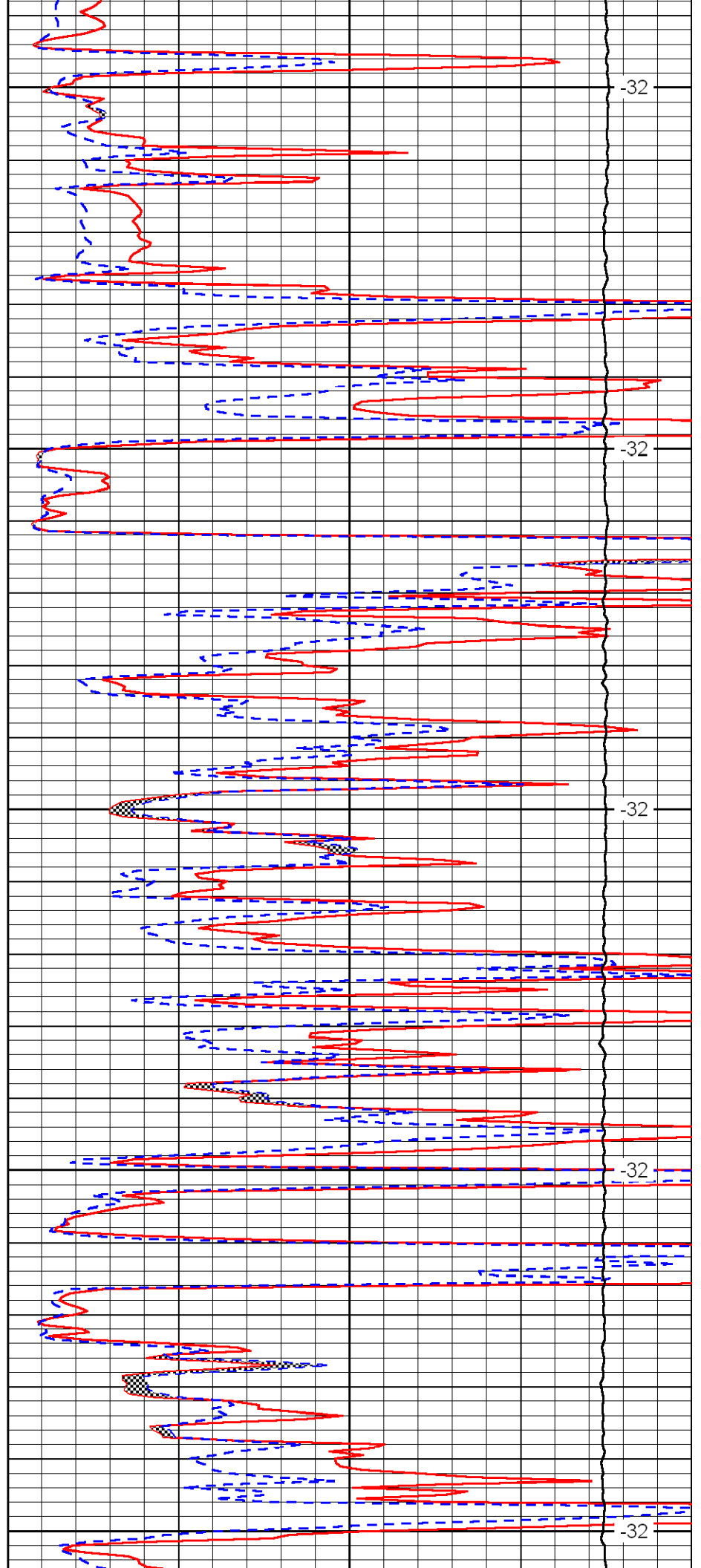
2600

2650

2700

2750

2800



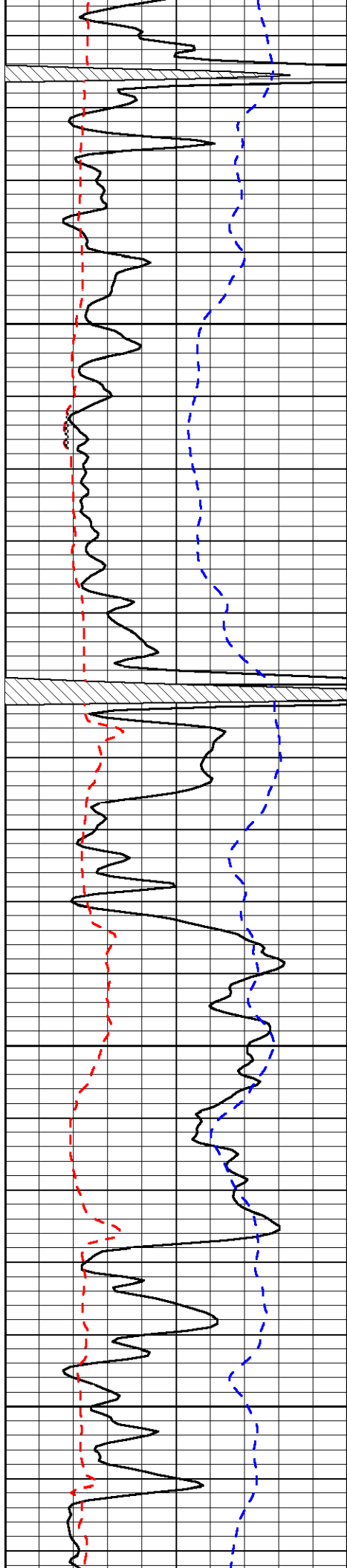
-32

-32

-32

-32

-32

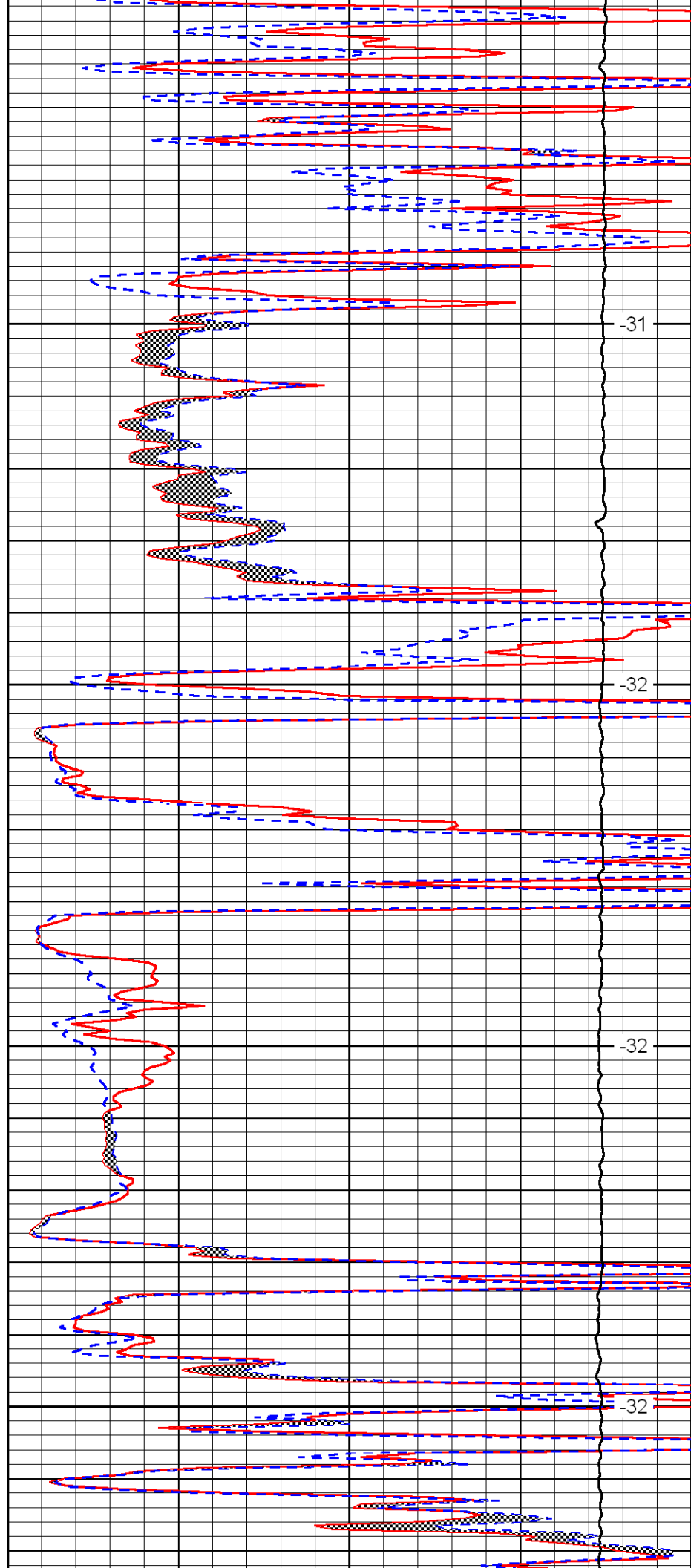


2850

2900

2950

3000

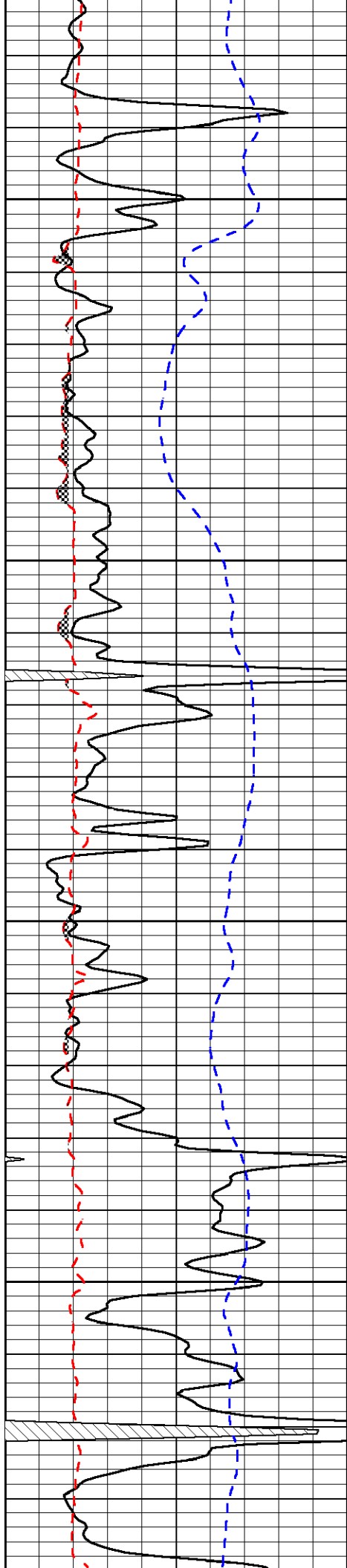


-31

-32

-32

-32

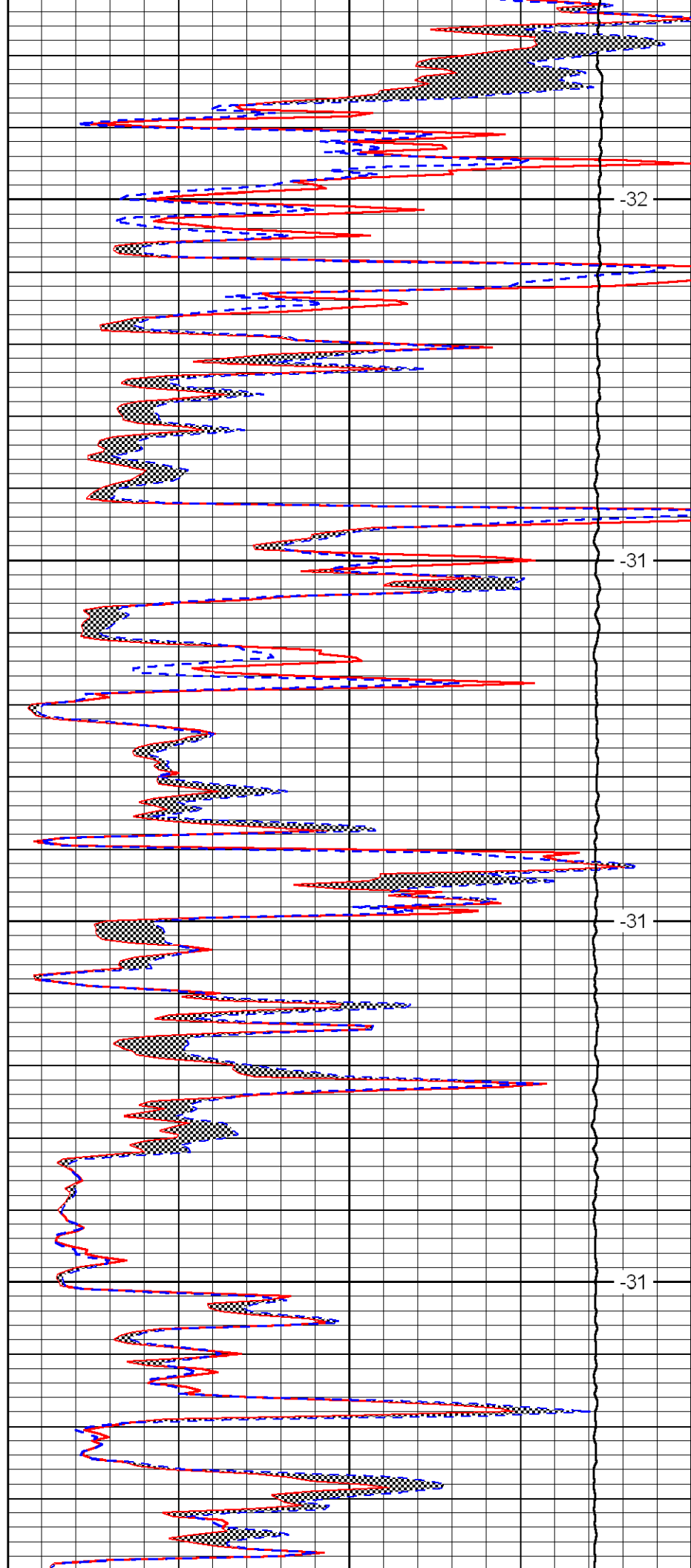


3050

3100

3150

3200

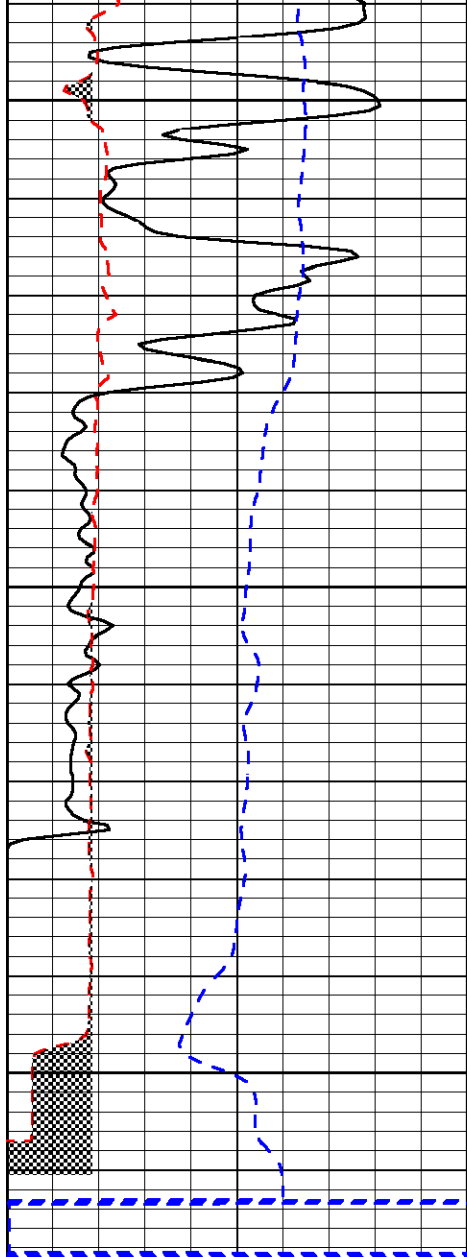


-32

-31

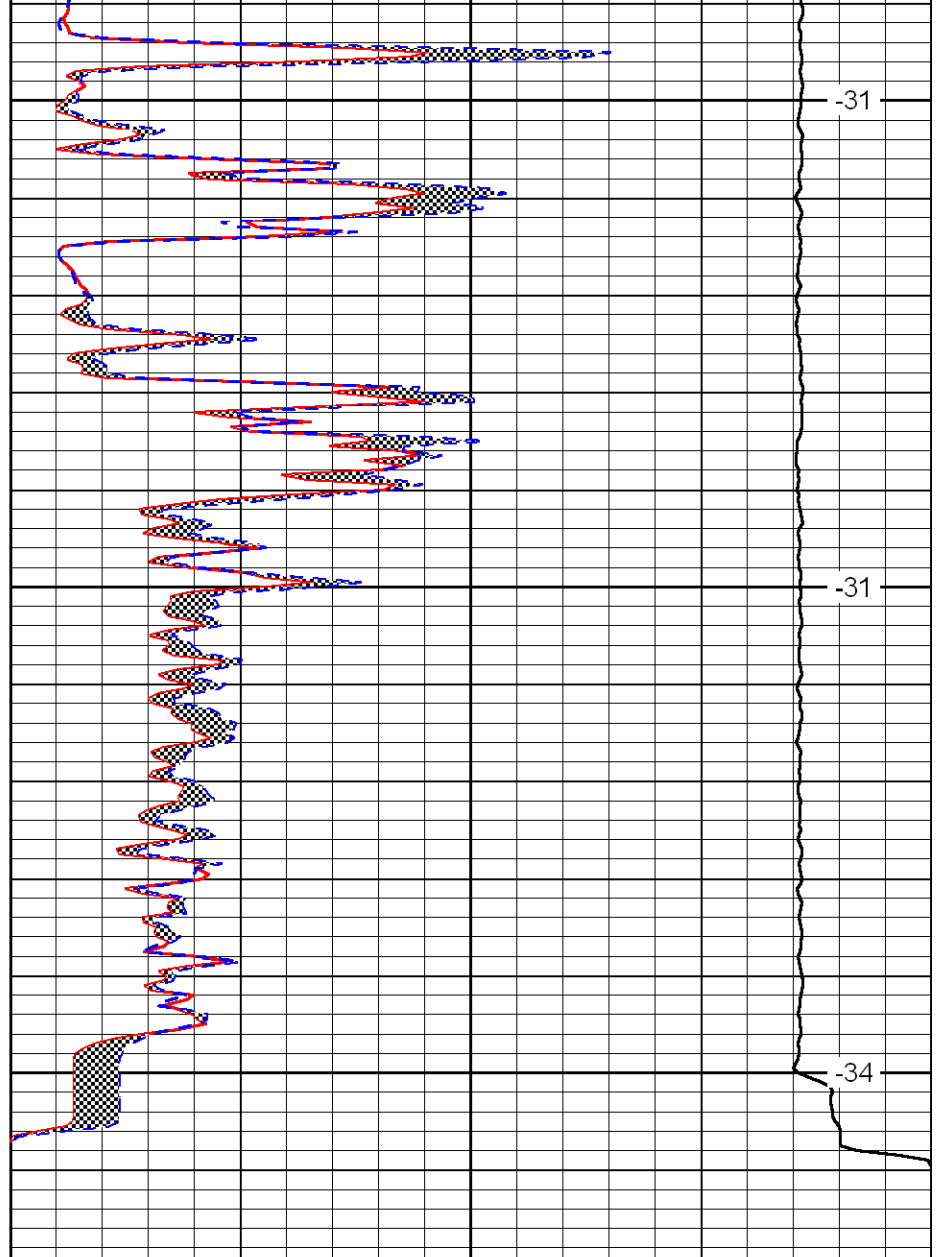
-31

-31



3250  
3300  
3350

0	Gamma Ray (GAPI)	150
6	Micro Log Caliper (GAPI)	16
-200	SP (MV)	0



-31  
-31  
-34

0	Micro Inverse 1 X 1 (Ohm-m)	40
0	Micro Normal 2" (Ohm-m)	40
10000	Line Weight (lb)	0

LSPD  
(ft/min)