



Dual Induction Log

DIGITAL LOG

(785) 625-3858

API No.

15-167-23,562-00-00

Company **John O Farmer, Inc.**

Well **Waymaster No. 1**

Field **Hall-Gurney**

County **Russell** State **Kansas**

Location **840' FSL & 2390' FWL**

Sec: **2** Twp: **15 S** Rge: **13 W**

Other Services
CNL/CDL
MEL

Elevation

K.B. 1799
D.F. 1791
G.L. 1791

Permanent Datum Ground Level Elevation 1791
Log Measured From Kelly Bushing 8 Ft. Above Perm. Datum
Drilling Measured From Kelly Bushing

Date	2/20/2009
Run Number	One
Depth Driller	3350
Depth Logger	3350
Bottom Logged Interval	3349
Top Log Interval	400
Casing Driller	8.625 @ 413
Casing Logger	411
Bit Size	7.875
Type Fluid in Hole	Chemical
Salinity, ppm CL	6,000
Density / Viscosity	9.3 46
pH / Fluid Loss	9.5 10.4
Source of Sample	Flowline
Rm @ Meas. Temp	.30 @ 58
Rmf @ Meas. Temp	.23 @ 58
Rmc @ Meas. Temp	.41 @ 58
Source of Rmf / Rmc	Charts
Rm @ BHT	.16 @ 112
Operating Rig Time	4 Hours
Max Rec. Temp. F	112
Equipment Number	10
Location	Hays
Recorded By	K. Bange
Witnessed By	Brad Hutchison

<<< Fold Here >>>

All interpretations are opinions based on inferences from electrical or other measurements and we cannot and do not guarantee the accuracy or correctness of any interpretation, and we shall not, except in the case of gross or willful negligence on our part, be liable or responsible for any loss, costs, damages, or expenses incurred or sustained by anyone resulting from any interpretation made by any of our officers, agents or employees. These interpretations are also subject to our general terms and conditions set out in our current Price Schedule.

Comments

Thank you for using Log-Tech, Inc.
(785) 625-3858

Bunker Hill, S. to stop sign, right follow blacktop (7.8 miles from Bunker Hill), N into

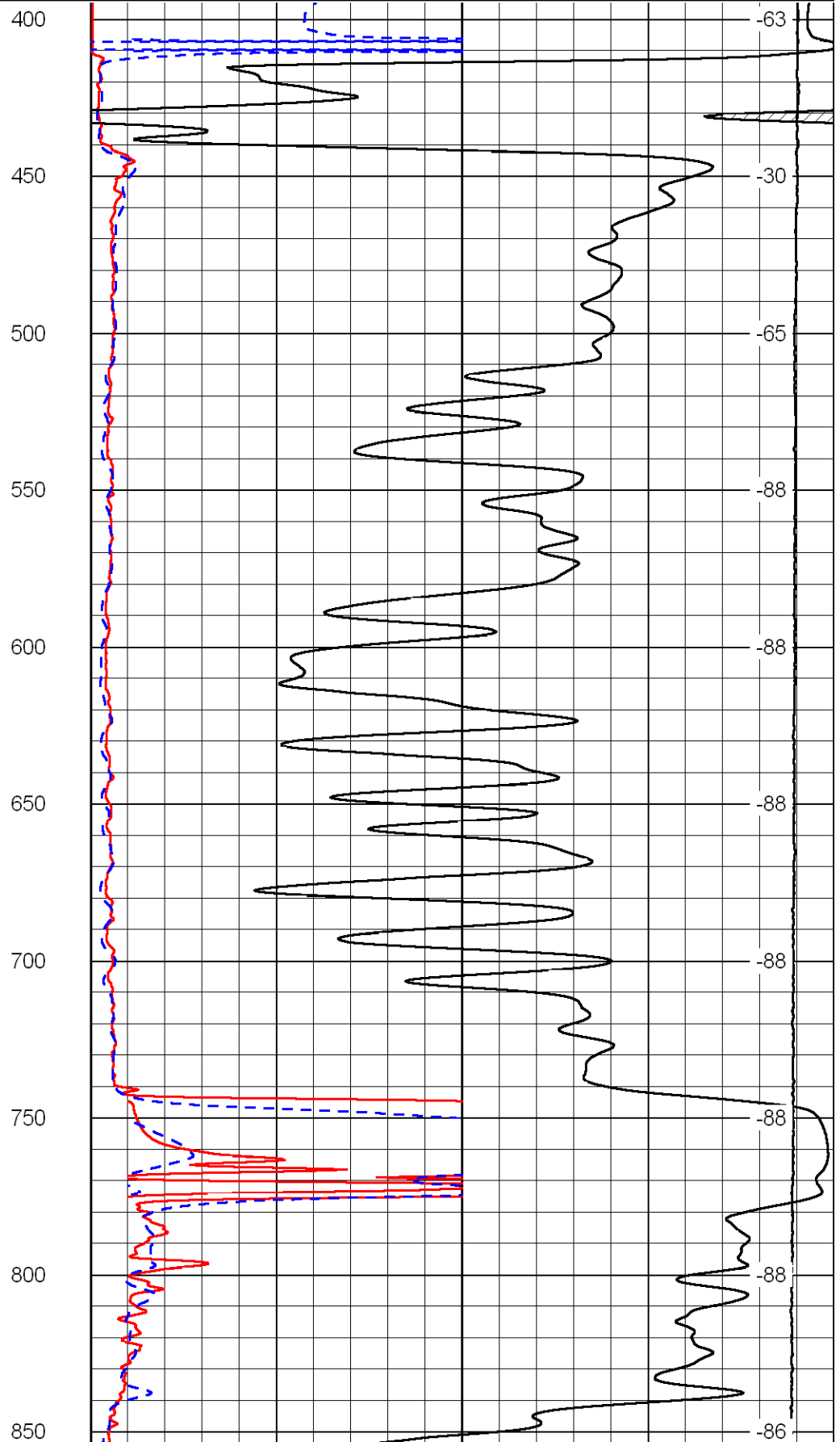
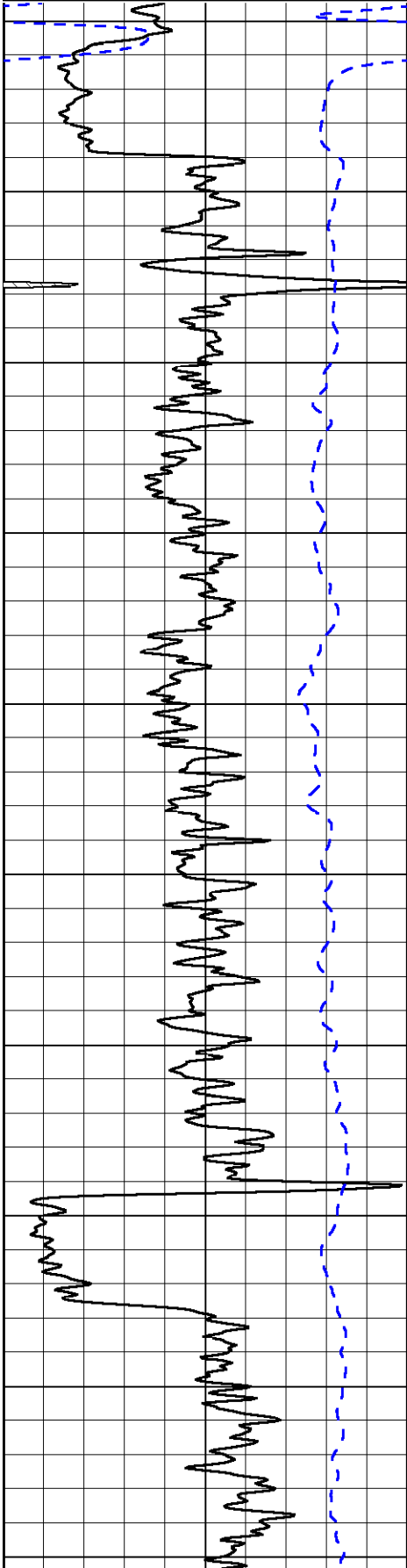
Database File: c:\warrior\data\farmer_waymaster no. 1\farmhd.db
 Dataset Pathname: dil/farm2in
 Presentation Format: dil2in
 Dataset Creation: Fri Feb 20 04:00:34 2009
 Charted by: Depth in Feet scaled 1:600

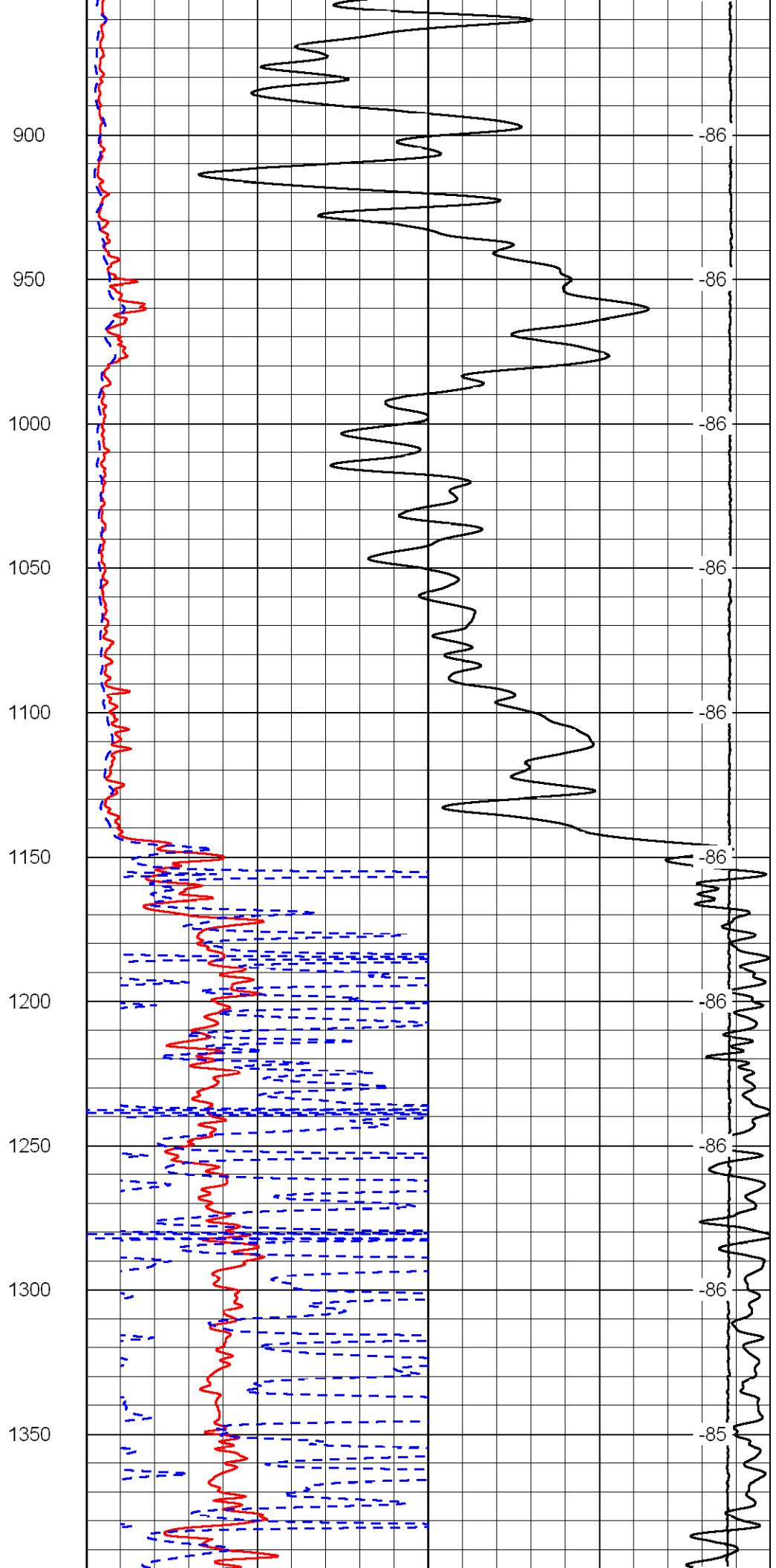
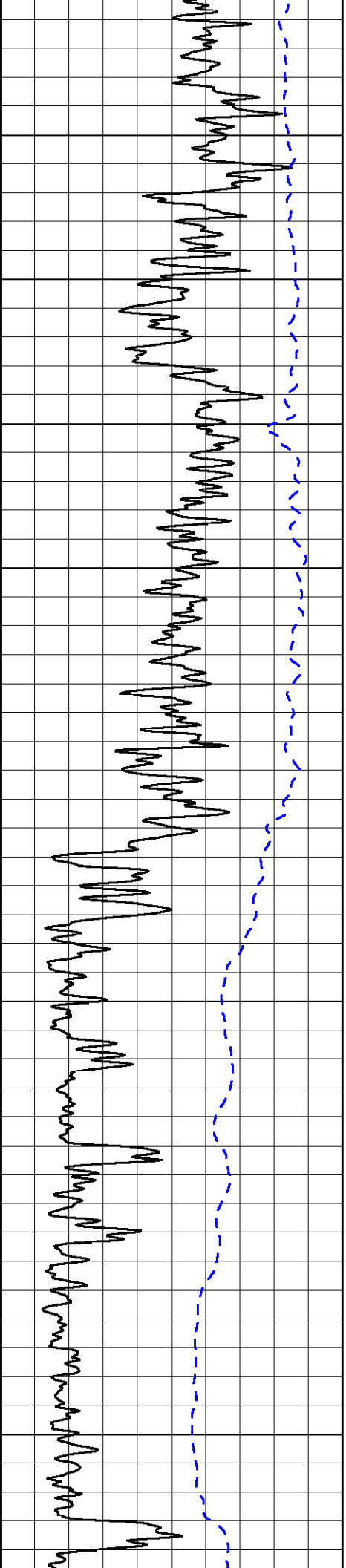
0 Gamma Ray (GAPI) 150
-200 SP (MV) 0

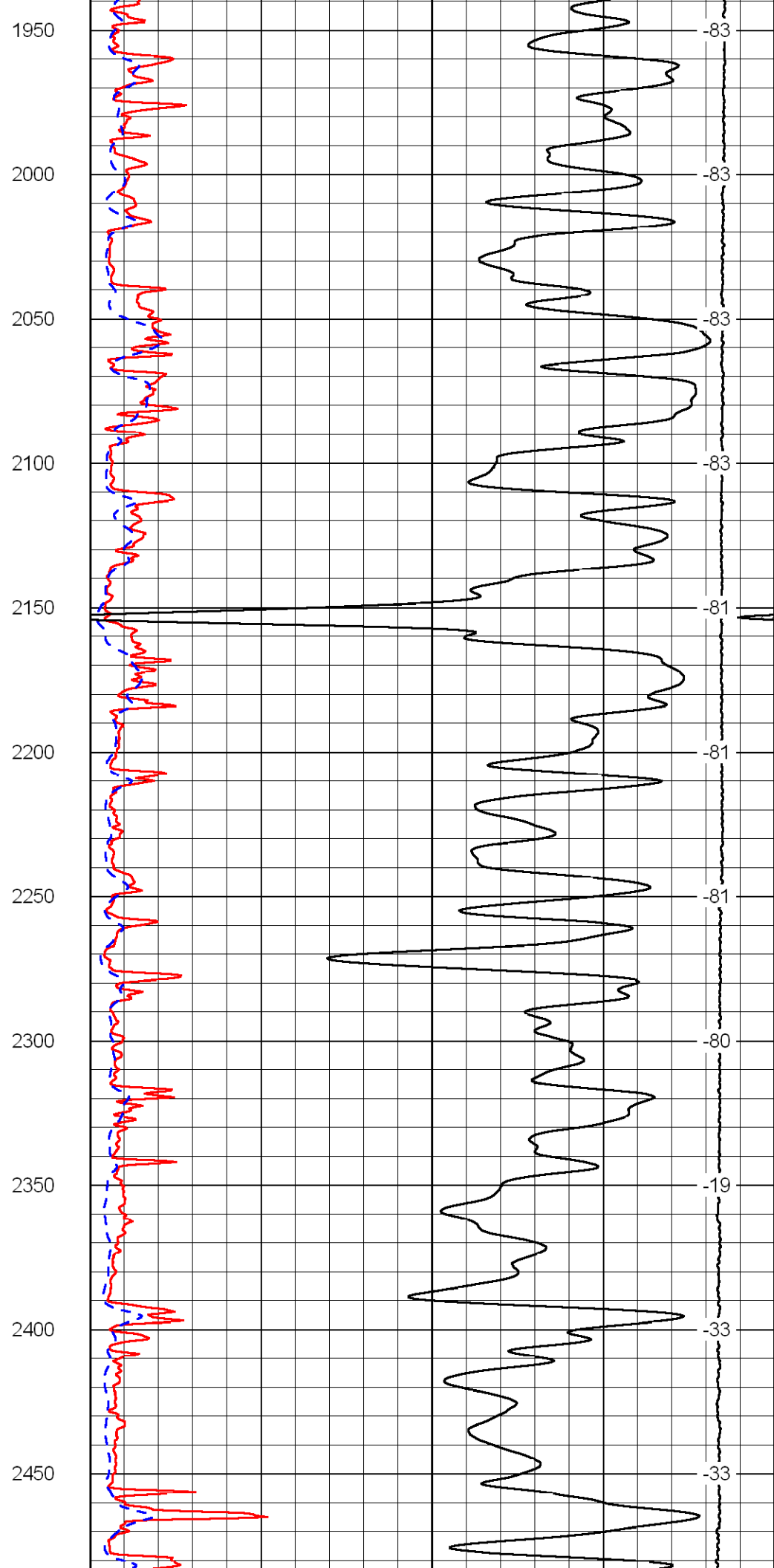
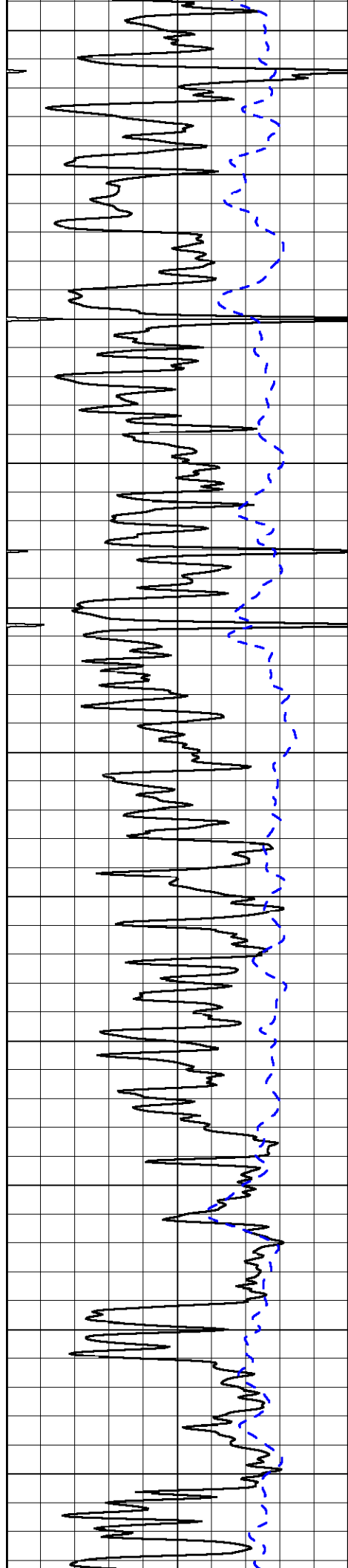
0 Shallow Resistivity (Ohm-m) 50
0 Deep Resistivity (Ohm-m) 50
1000 Conductivity (mmho/m) 0
15000 Line Tension (lb) 0

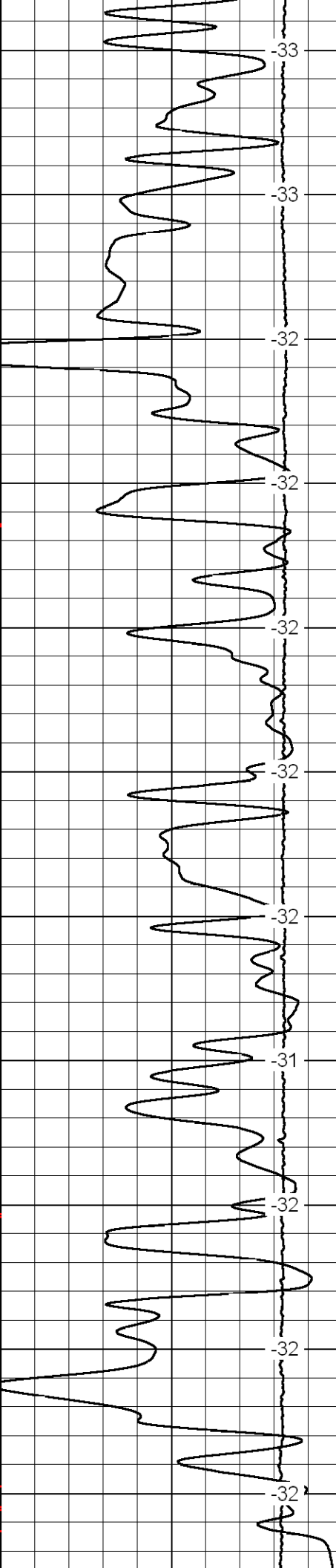
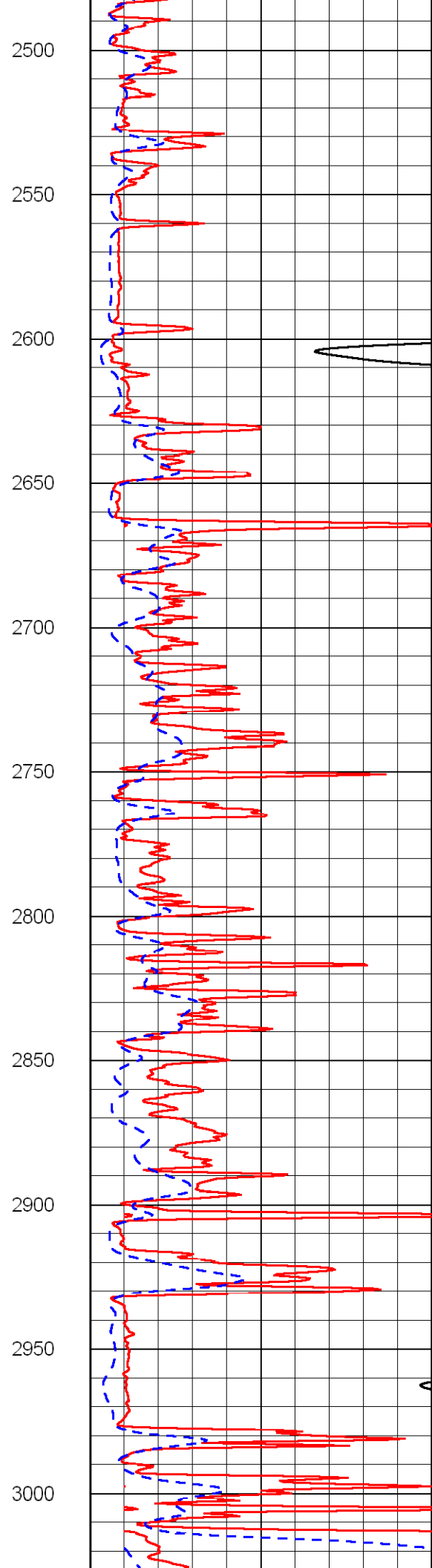
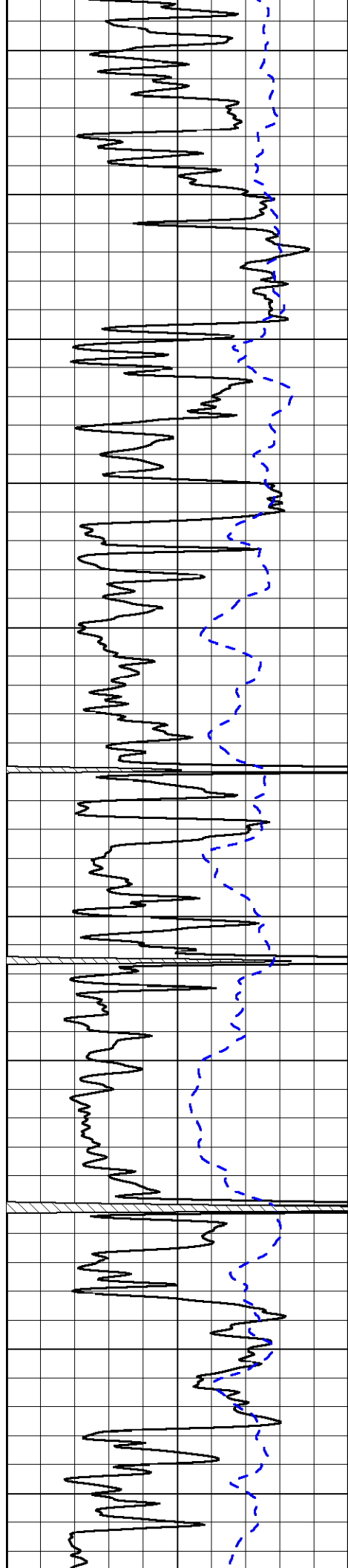
LSPD
(ft/min)

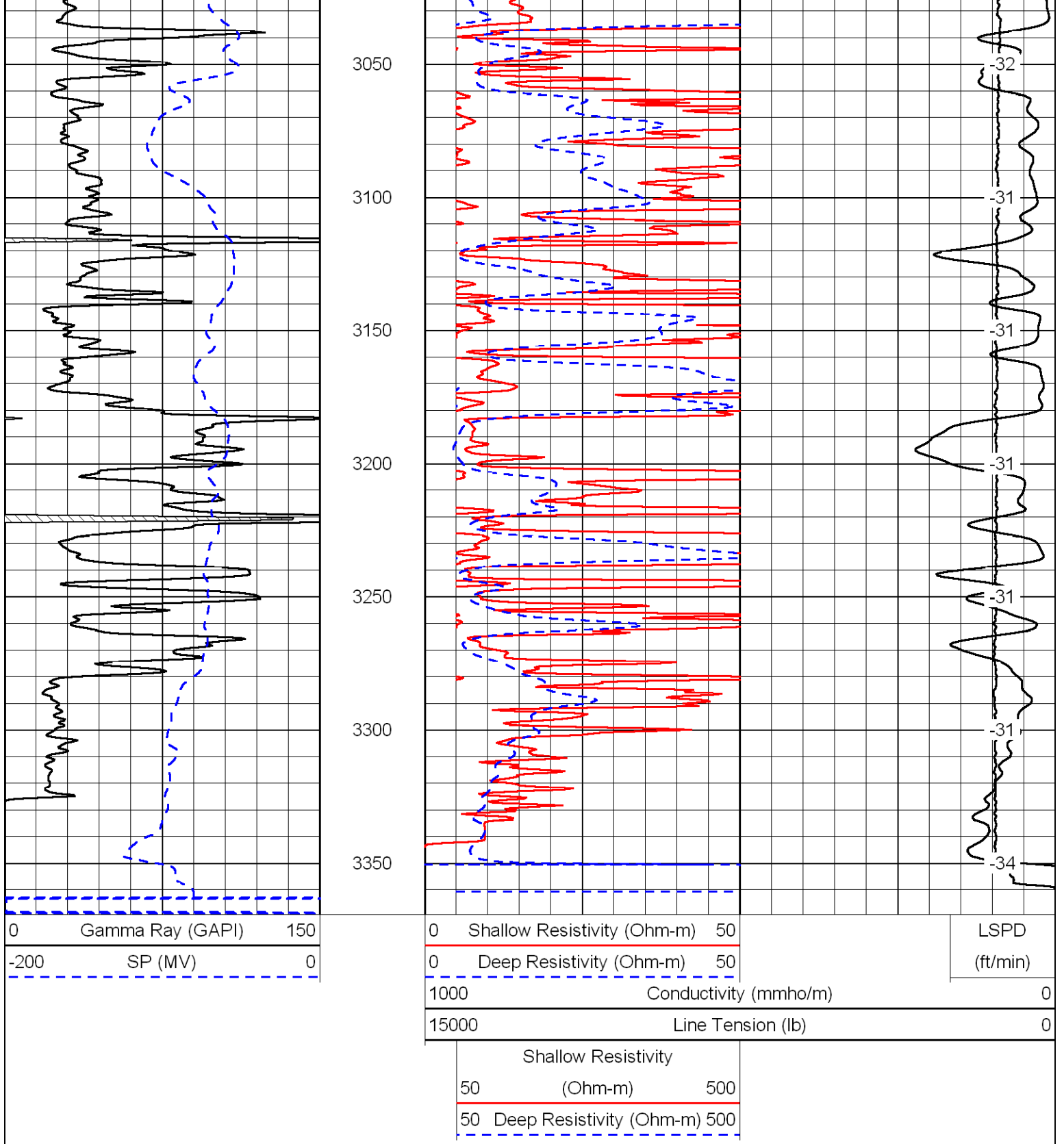
Shallow Resistivity
50 (Ohm-m) 500
50 Deep Resistivity (Ohm-m) 500



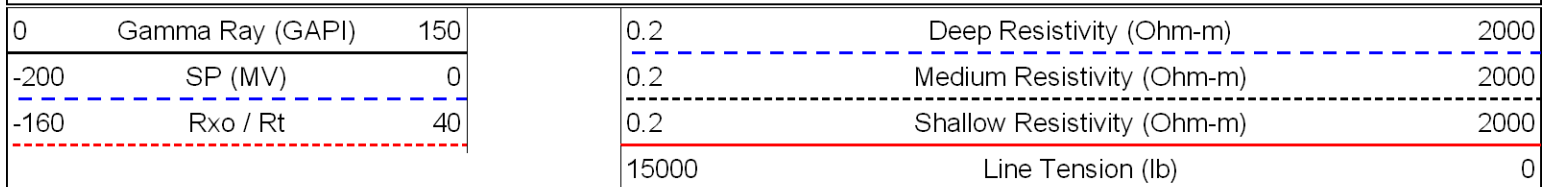




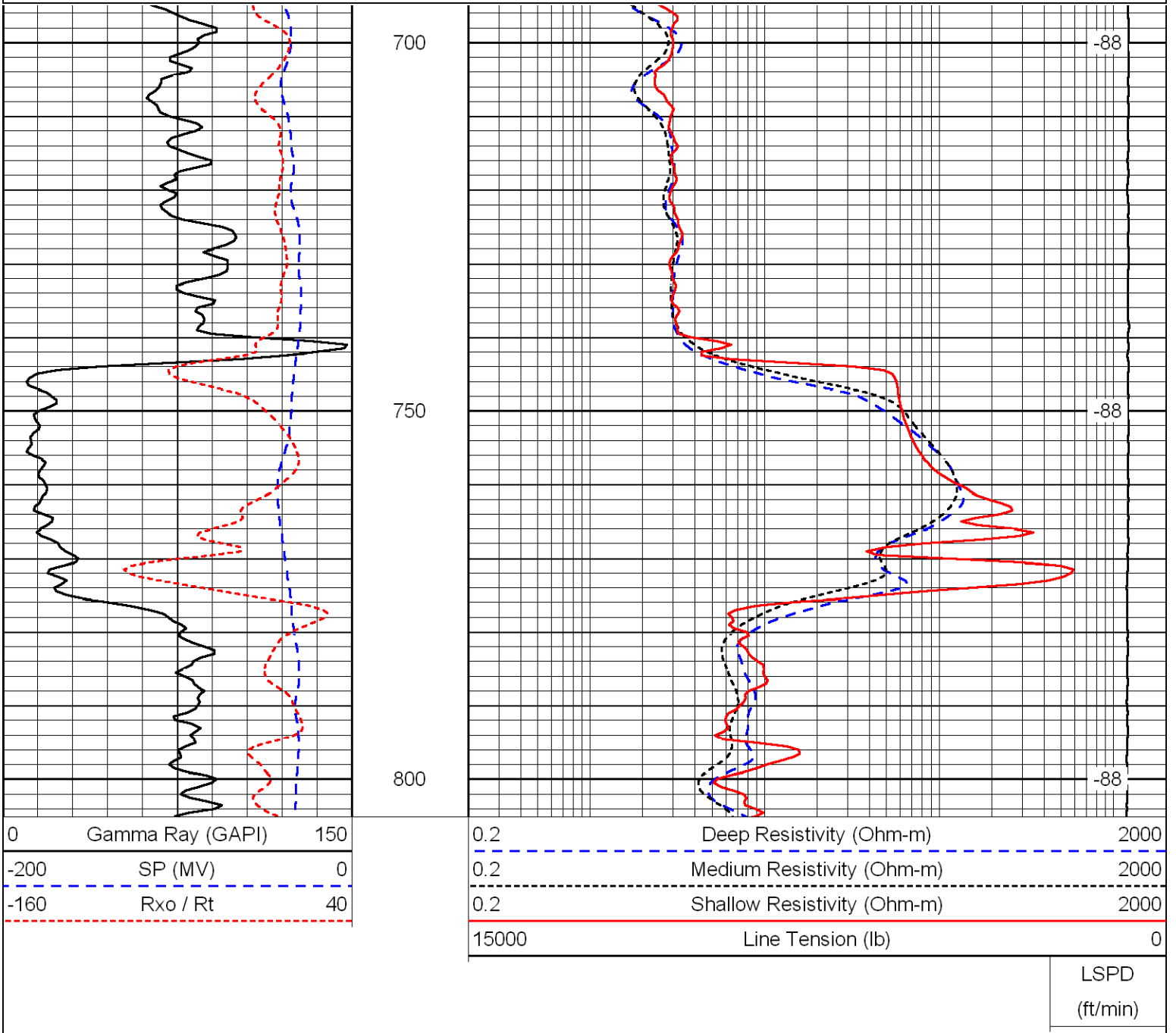




Database File: c:\warrior\data\farmer_waymaster no. 1\farmhd.db
 Dataset Pathname: dil/farm2in
 Presentation Format: dil
 Dataset Creation: Fri Feb 20 04:00:34 2009
 Charted by: Depth in Feet scaled 1:240

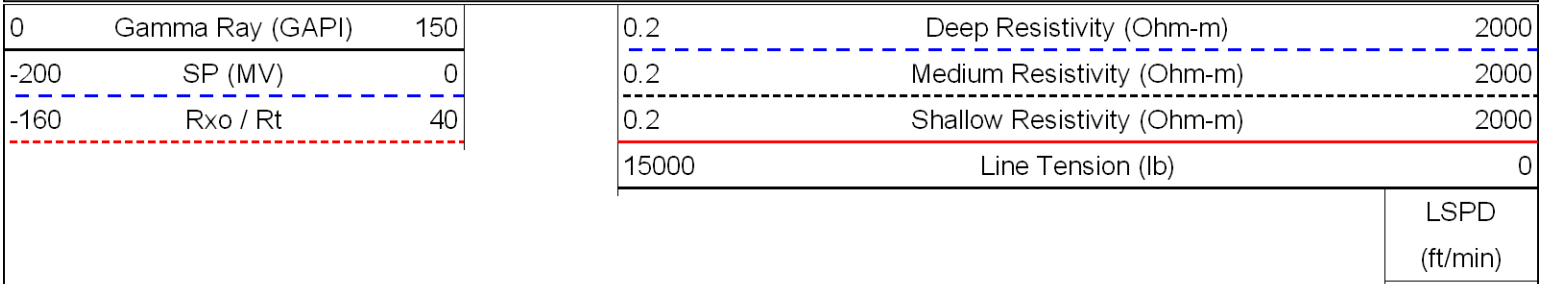


LSPD
(ft/min)

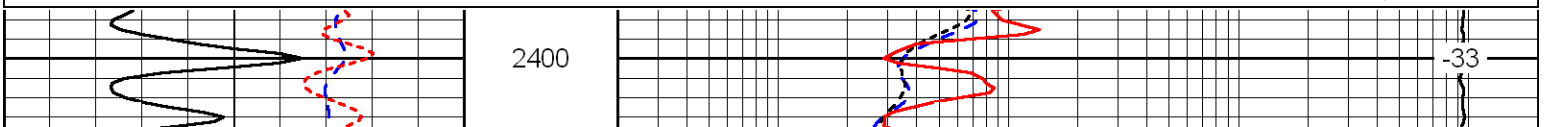


LSPD
(ft/min)

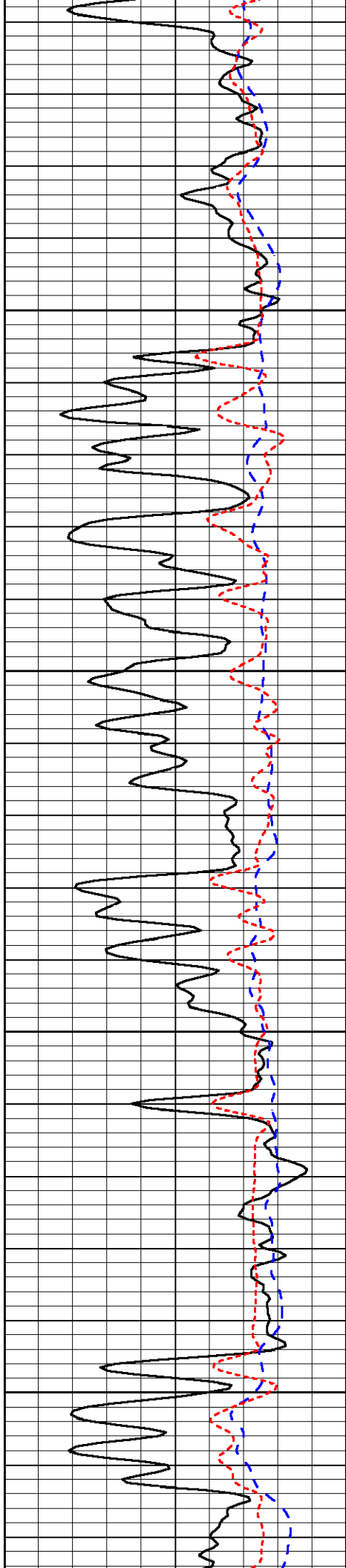
Database File: c:\warrior\data\farmer_waymaster no. 1\farmhd.db
Dataset Pathname: dil/farm2in
Presentation Format: dil
Dataset Creation: Fri Feb 20 04:00:34 2009
Charted by: Depth in Feet scaled 1:240



LSPD
(ft/min)



LSPD
(ft/min)

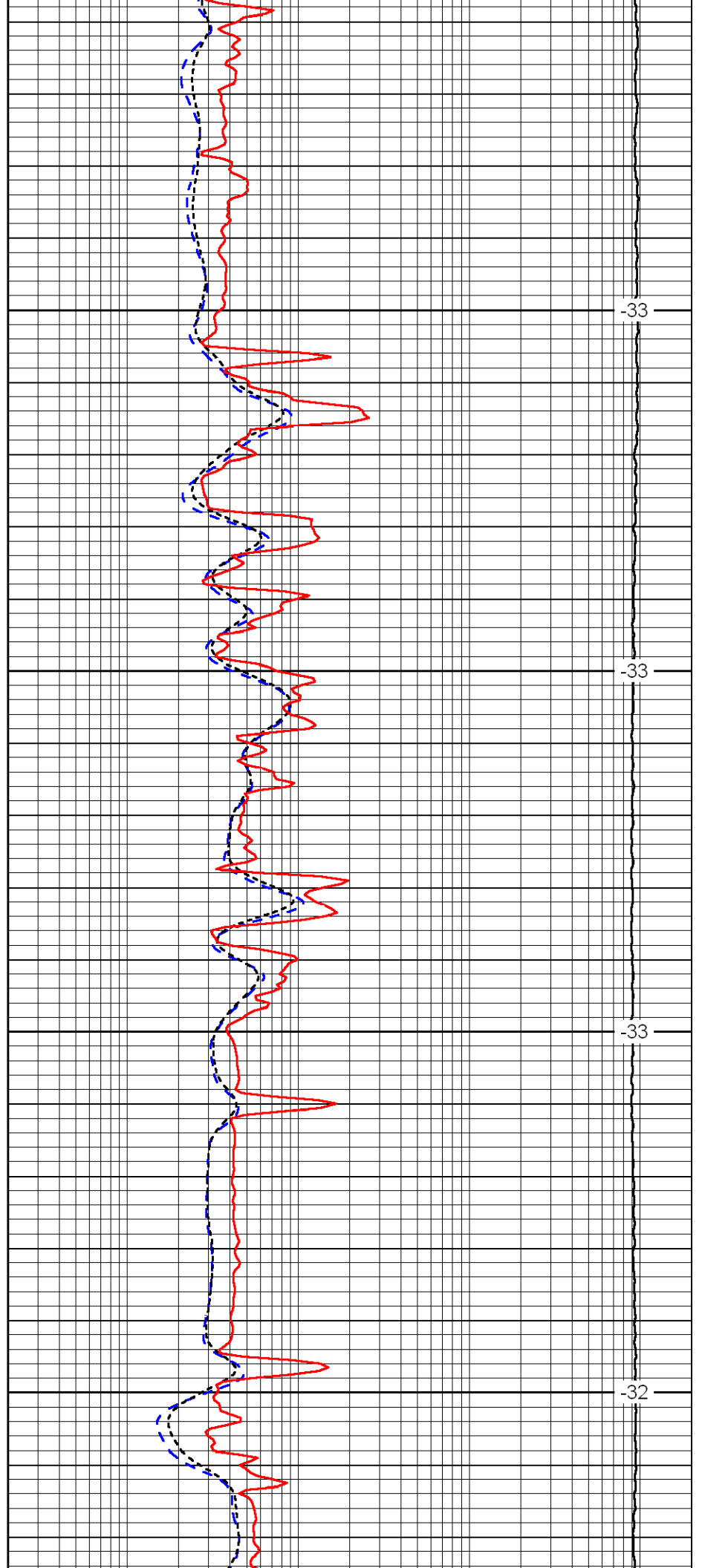


2450

2500

2550

2600

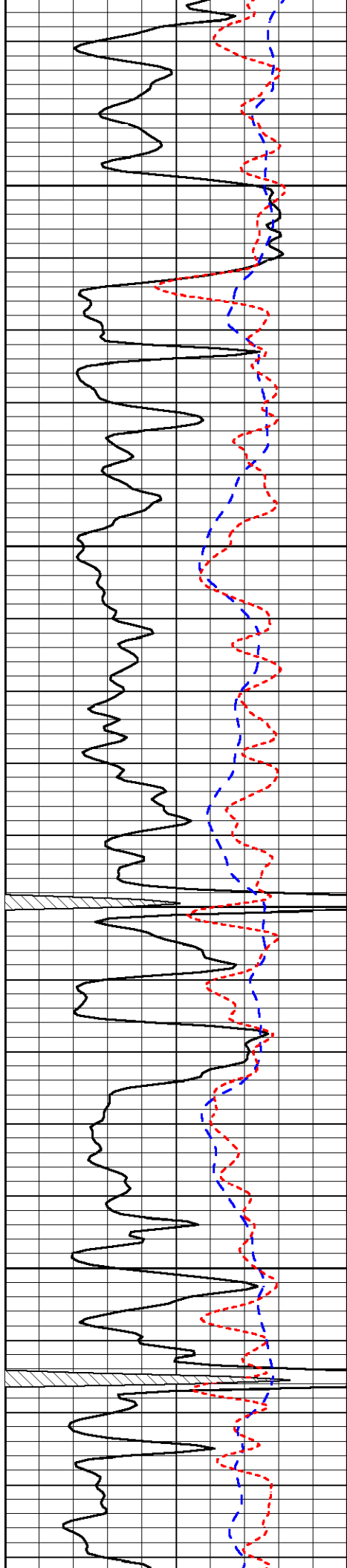


-33

-33

-33

-32

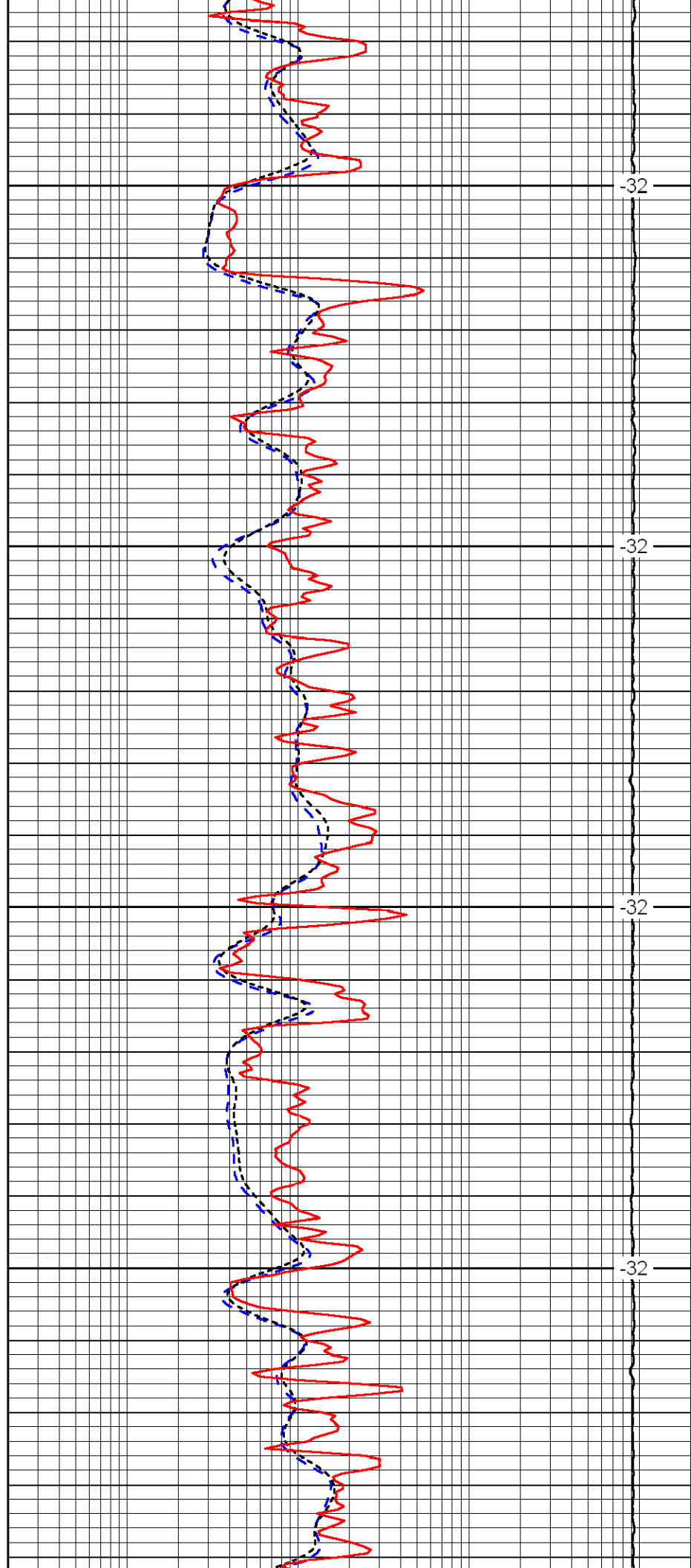


2650

2700

2750

2800

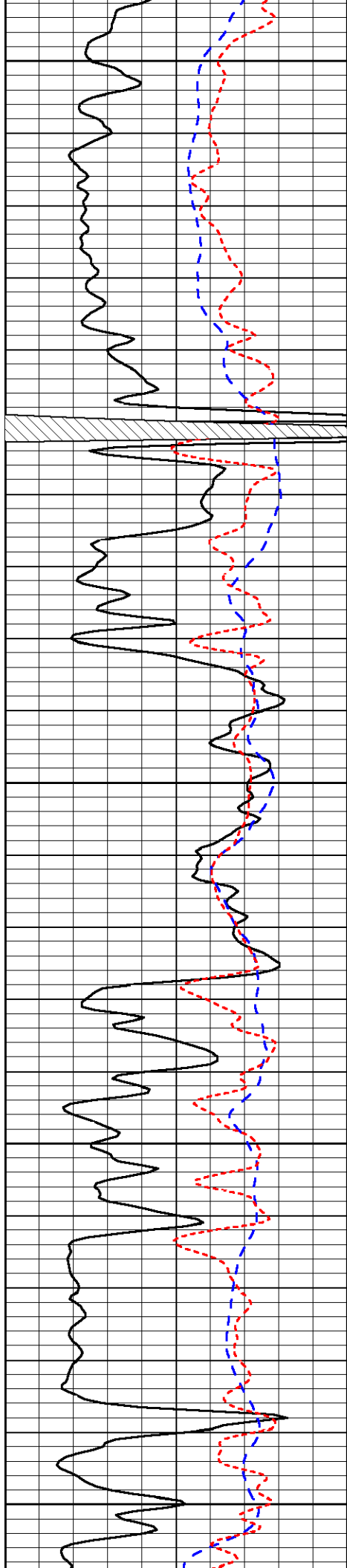


-32

-32

-32

-32



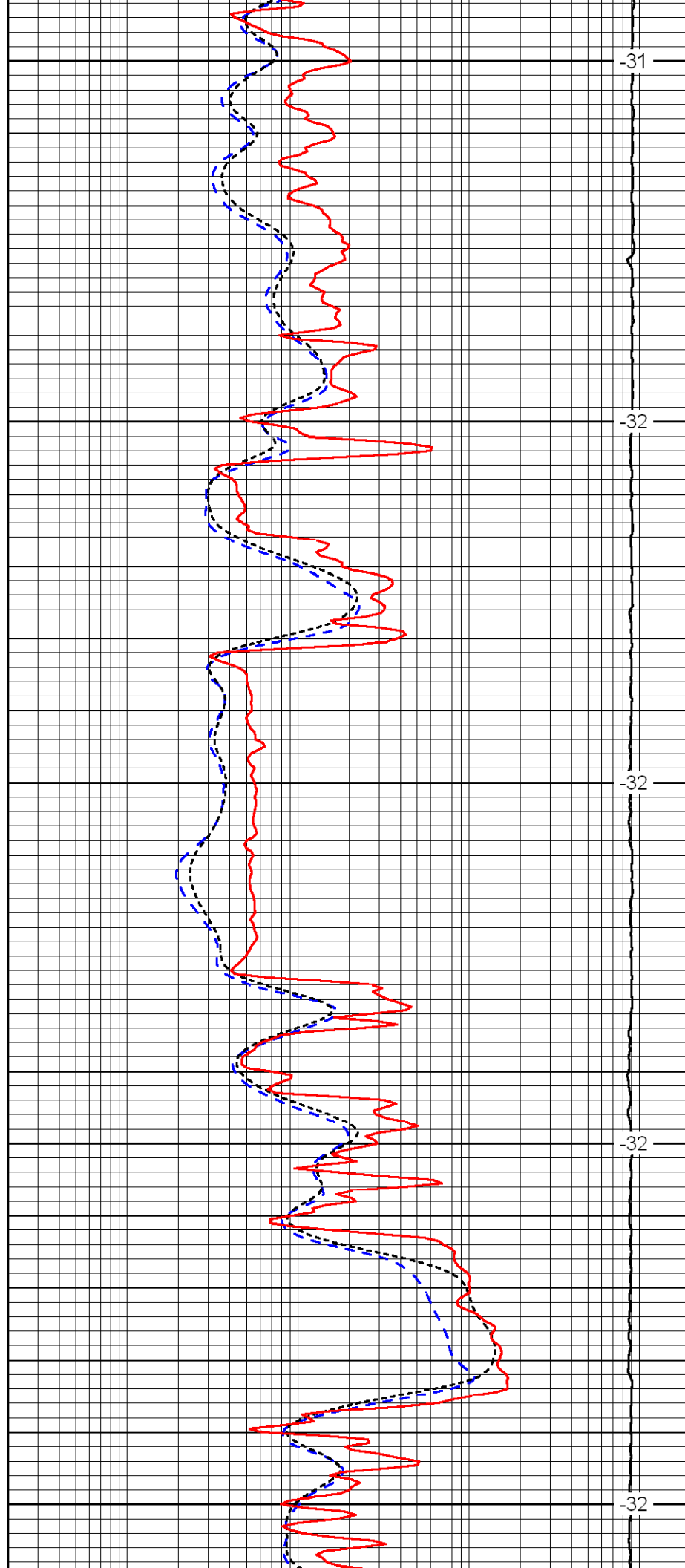
2850

2900

2950

3000

3050



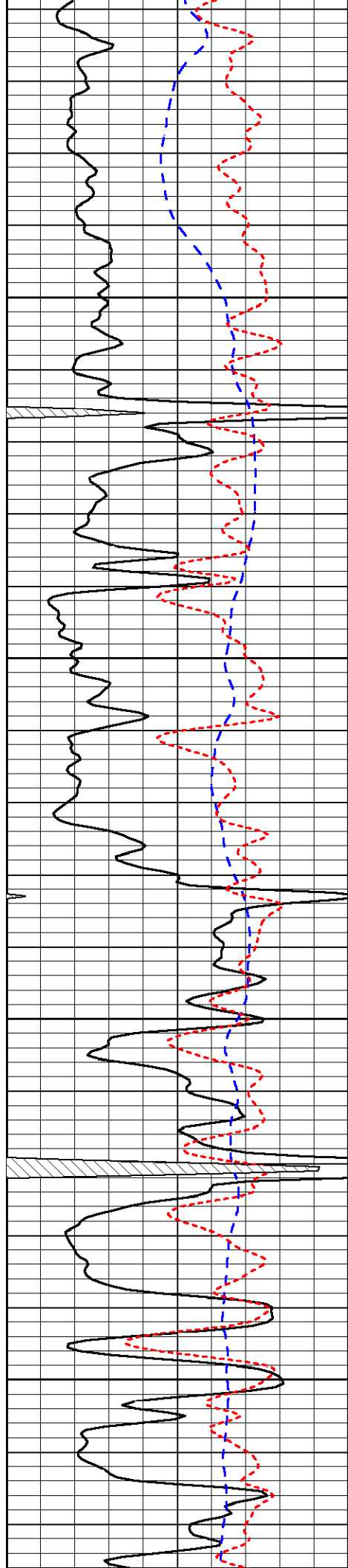
-31

-32

-32

-32

-32

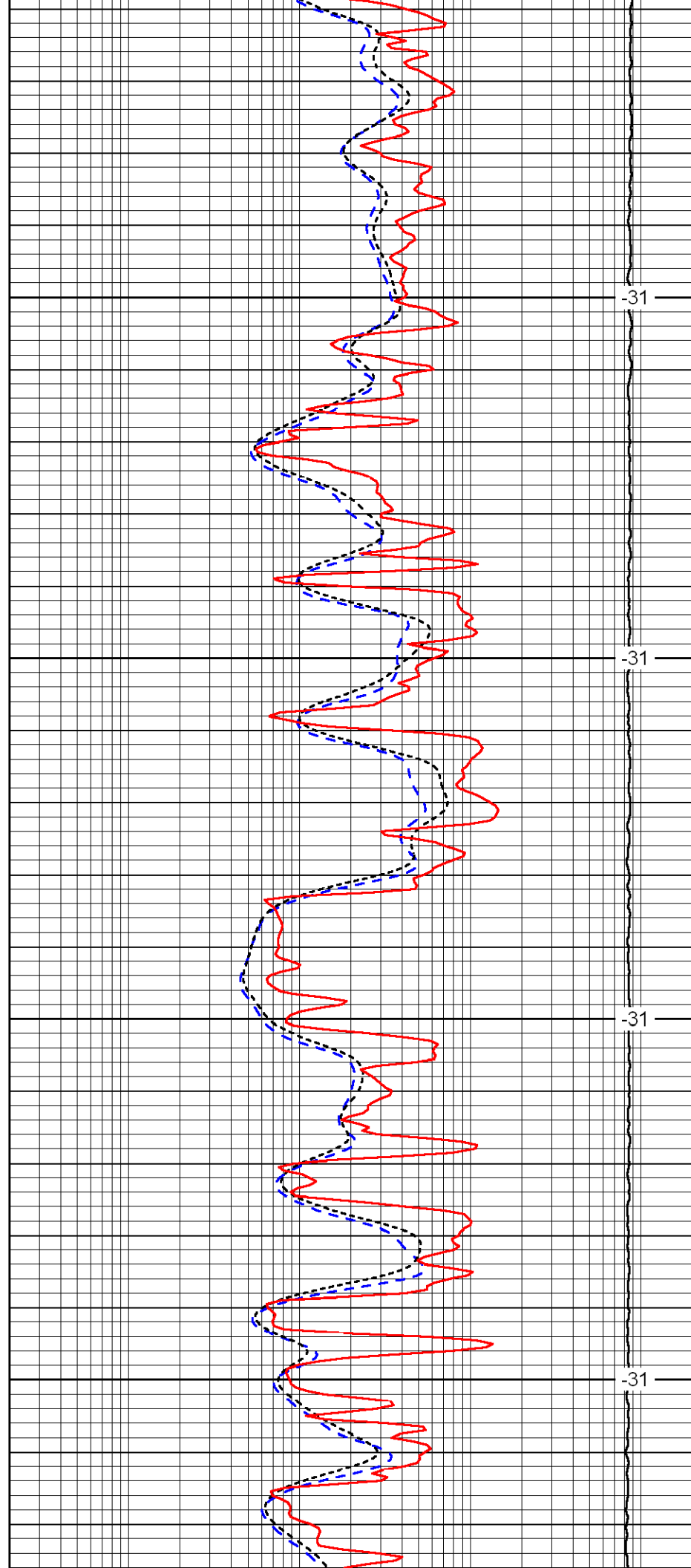


3100

3150

3200

3250

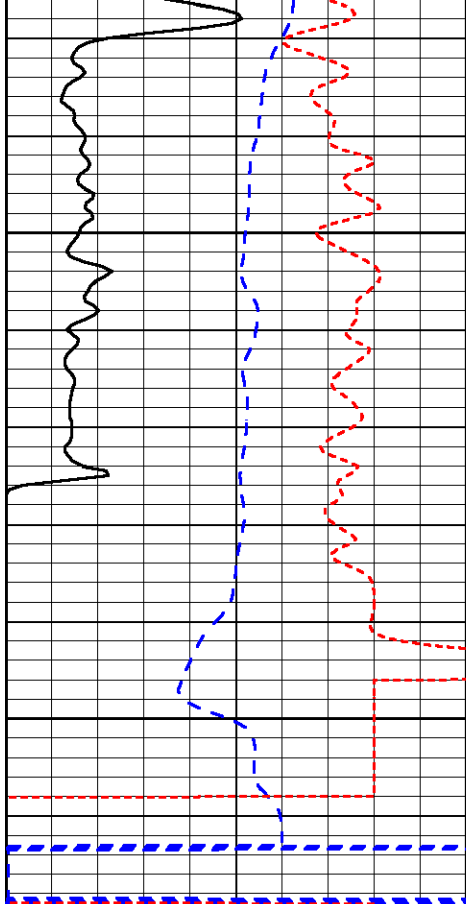


-31

-31

-31

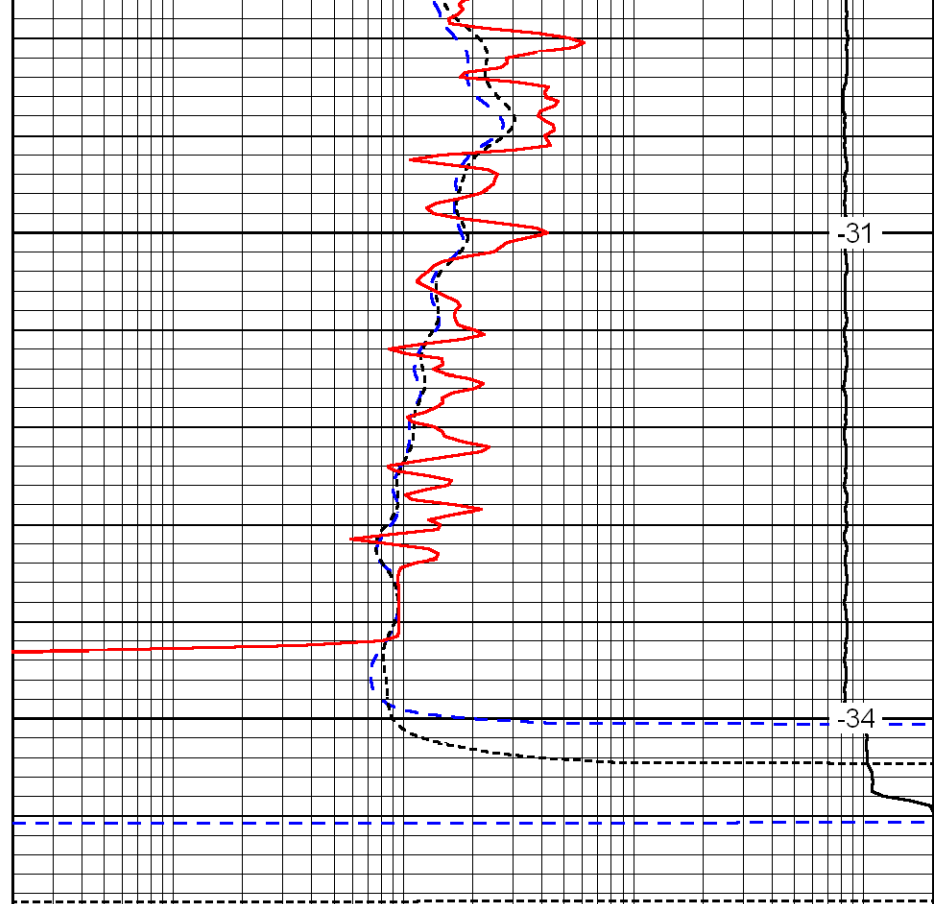
-31



0	Gamma Ray (GAPI)	150
-200	SP (MV)	0
-160	Rxo / Rt	40

3300

3350



0.2	Deep Resistivity (Ohm-m)	2000
0.2	Medium Resistivity (Ohm-m)	2000
0.2	Shallow Resistivity (Ohm-m)	2000
15000	Line Tension (lb)	0

LSPD
(ft/min)