



SUPERIOR
Hays,
Kansas

SONIC
LOG

Company MULL DRILLING CO. INC.
Well LILA #1-12
Field WC
County LANE
State KANSAS

Company MULL DRILLING COMPANY, INC.
Well LILA #1-12
Field WC
County LANE State KANSAS

Location: API # : 15-101-22150-0000
NE/4 NE/4
1178'FNL & 339'FEL
SEC 12 TWP 18S RGE 28W
Permanent Datum GROUND LEVEL Elevation 2709
Log Measured From KELLY BUSHING 5' A.G.L.
Drilling Measured From KELLY BUSHING
Other Services
CDL/CNL
DIL/MEL
Elevation
K.B. 2714
D.F.
G.L. 2709

Date	12 FEB 09
Run Number	ONE
Depth Driller	4645
Depth Logger	4640
Bottom Logged Interval	4632
Top Log Interval	0
Casing Driller	8 5/8 @ 232'
Casing Logger	232
Bit Size	7 7/8
Type Fluid In Hole	CHEMICAL MUD
Density / Viscosity	9.6/57
pH / Fluid Loss	8.5/11.2
Source of Sample	FLOWLINE
Rm @ Meas. Temp	1.1 @ 75
Rmf @ Meas. Temp	1.0 @ 75
Rmc @ Meas. Temp	1.2 @ 75
Source of Rmf / Rmc	CAL/CAL
Rm @ BHT	0.8 @ 111
Time Circulation Stopped	2 HOURS
Time Logger on Bottom	0630
Maximum Recorded Temperature	111
Equipment Number	680
Location	HAYS, KS
Recorded By	DUGAN DENTON
Witnessed By	PHIL ASKEY

<<< Fold Here >>>

All interpretations are opinions based on inferences from electrical or other measurements and we cannot and do not guarantee the accuracy or correctness of any interpretation, and we shall not, except in the case of gross or willful negligence on our part, be liable or responsible for any loss, costs, damages, or expenses incurred or sustained by anyone resulting from any interpretation made by any of our officers, agents or employees. These interpretations are also subject to our general terms and conditions set out in our current Price Schedule.

Comments

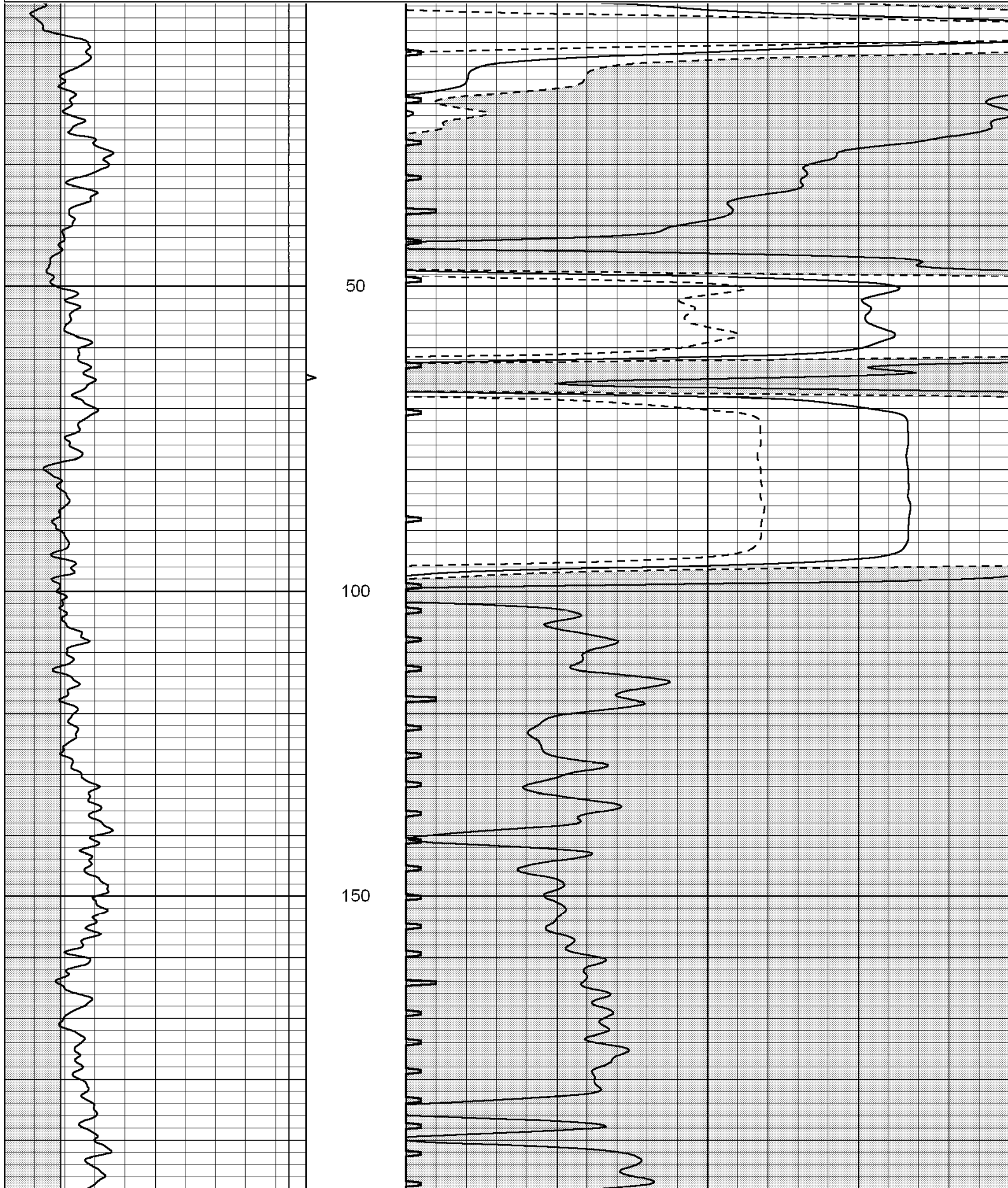
THANK YOU FOR USING SUPERIOR WELL SERVICES
HAYS, KS. 785-628-6395

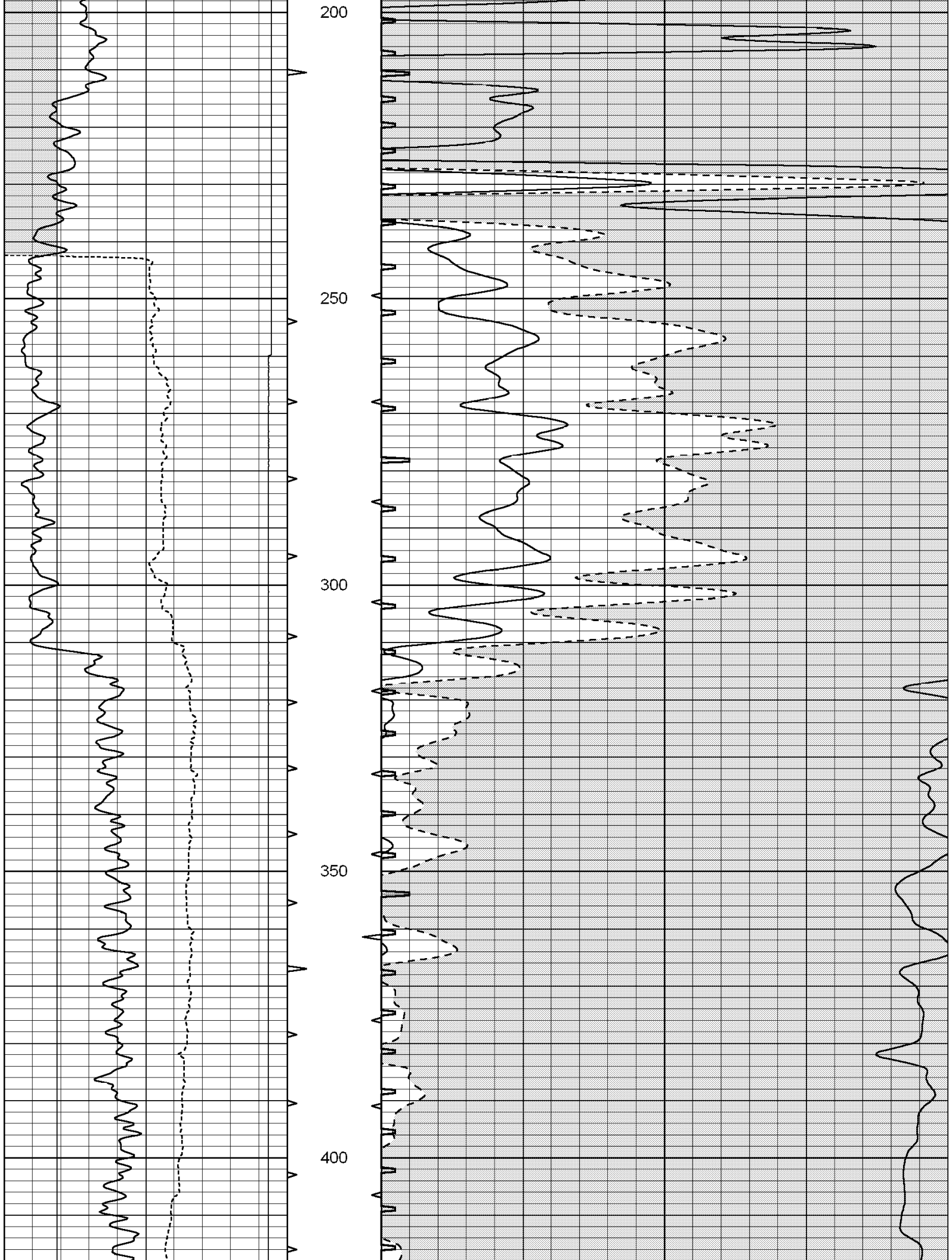
DIRECTIONS: DIGHTON; 5 EAST TO PAWNEE RD, 2 NORTH, 1 EAST INTO

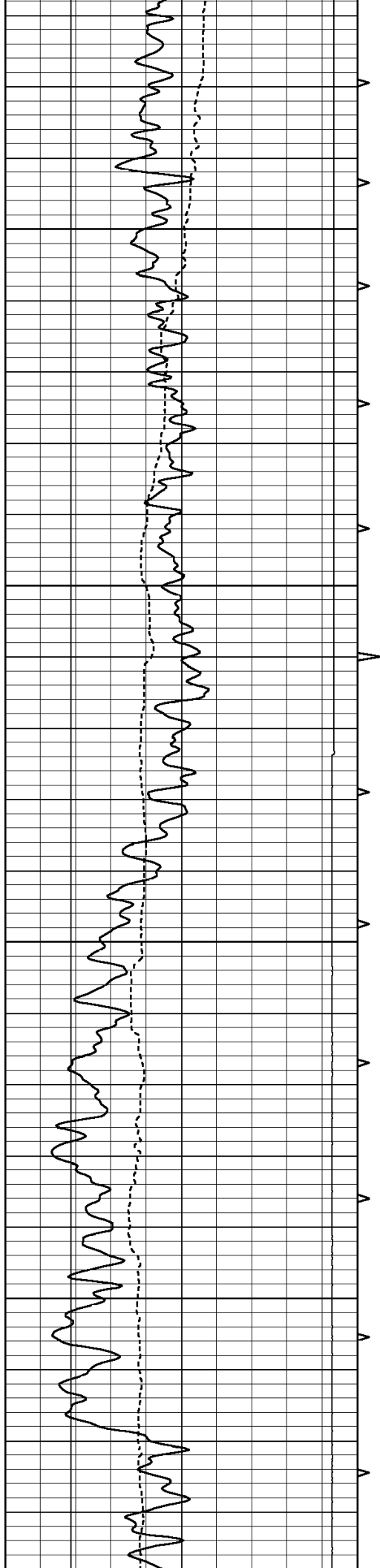
Charted by:

Depth in Feet scaled 1:240

0	GAMMA RAY (GAPI)	150	ABHV	140	DELTA TIME (usec/ft)	40
6	CALIPER (in)	16	10 (ft3) 0	30	SONIC POROSITY (pu)	-10
10000	LTEN (lb)	0	TBHV	0	ITT (msec)	20
			0 (ft3) 10			





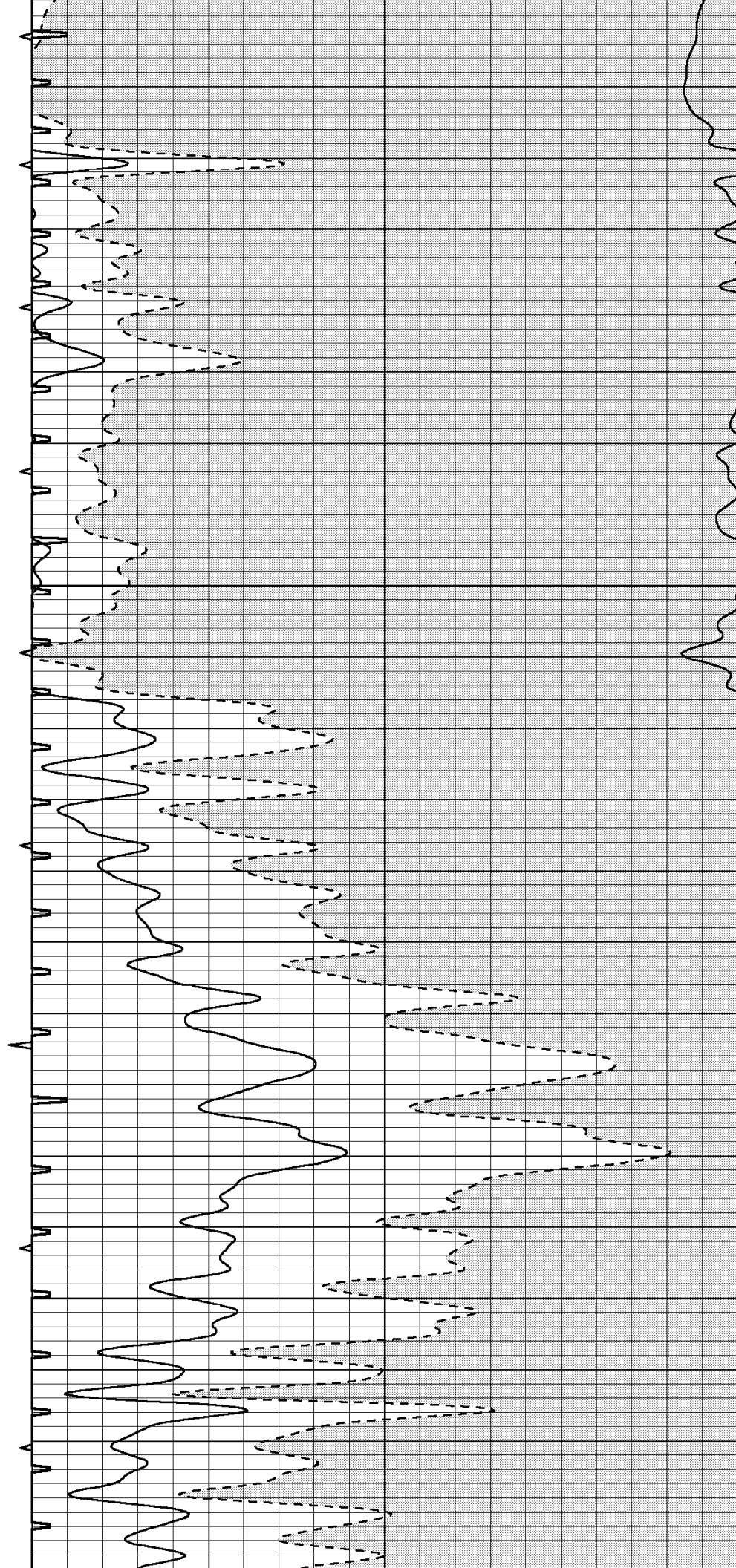


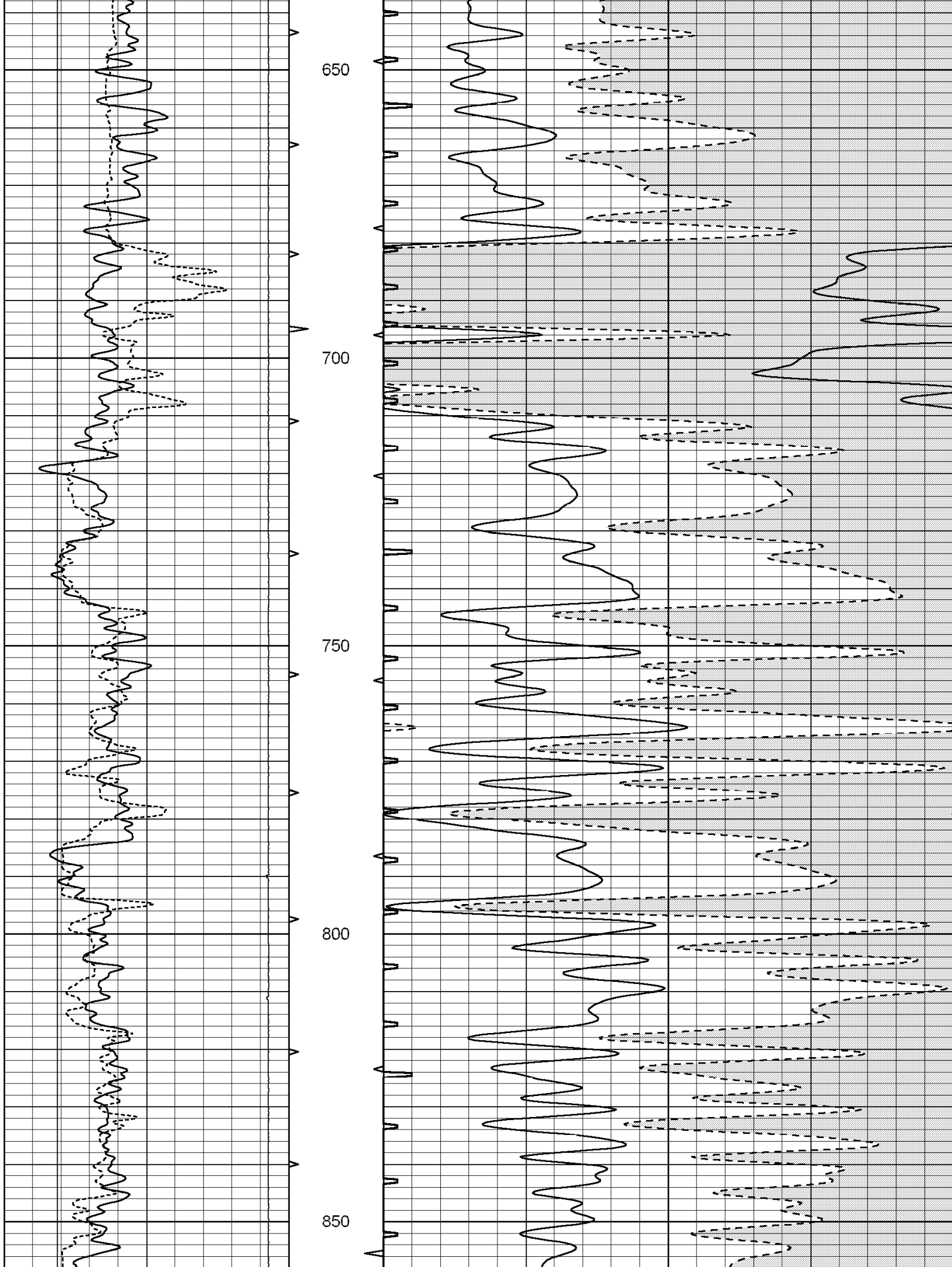
450

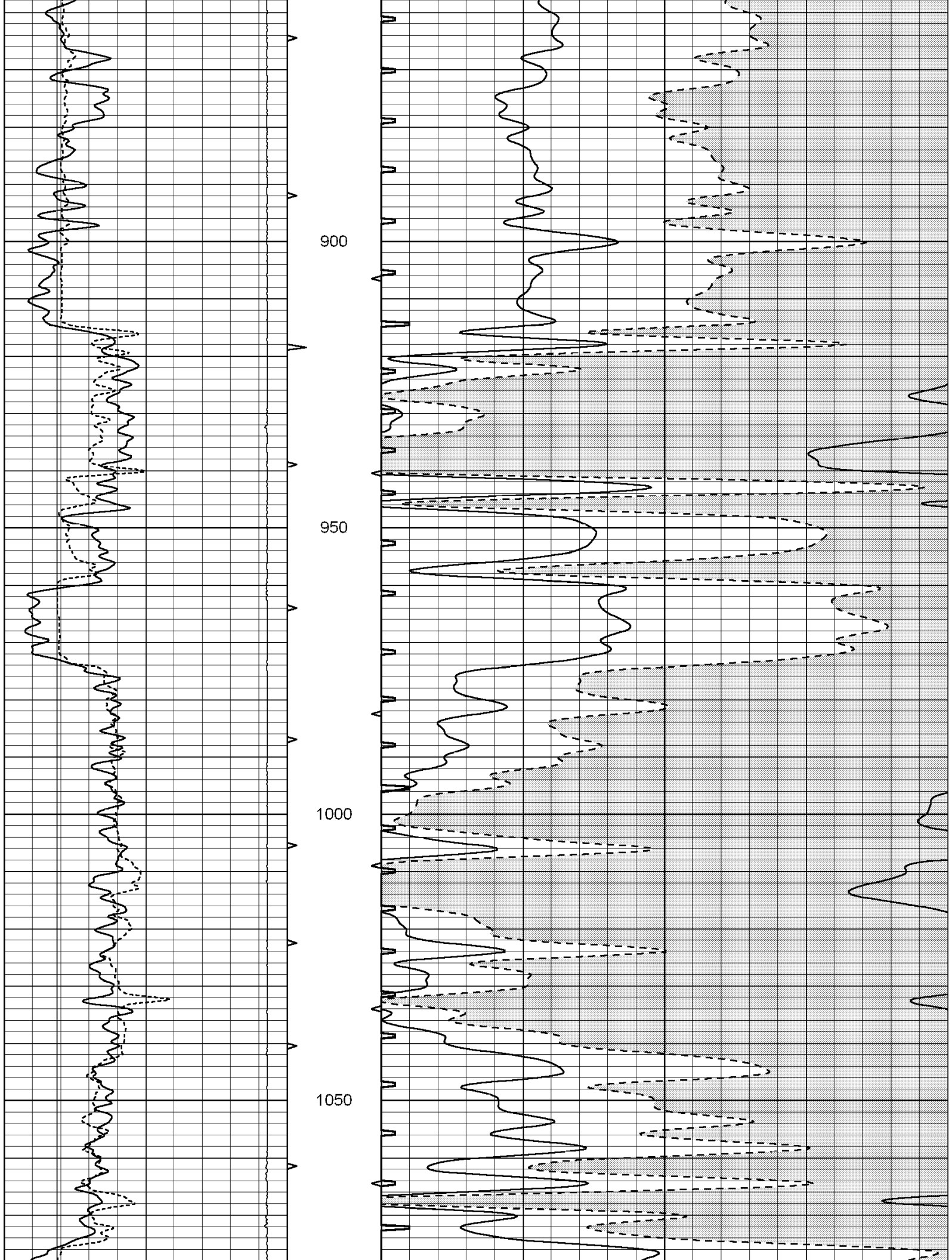
500

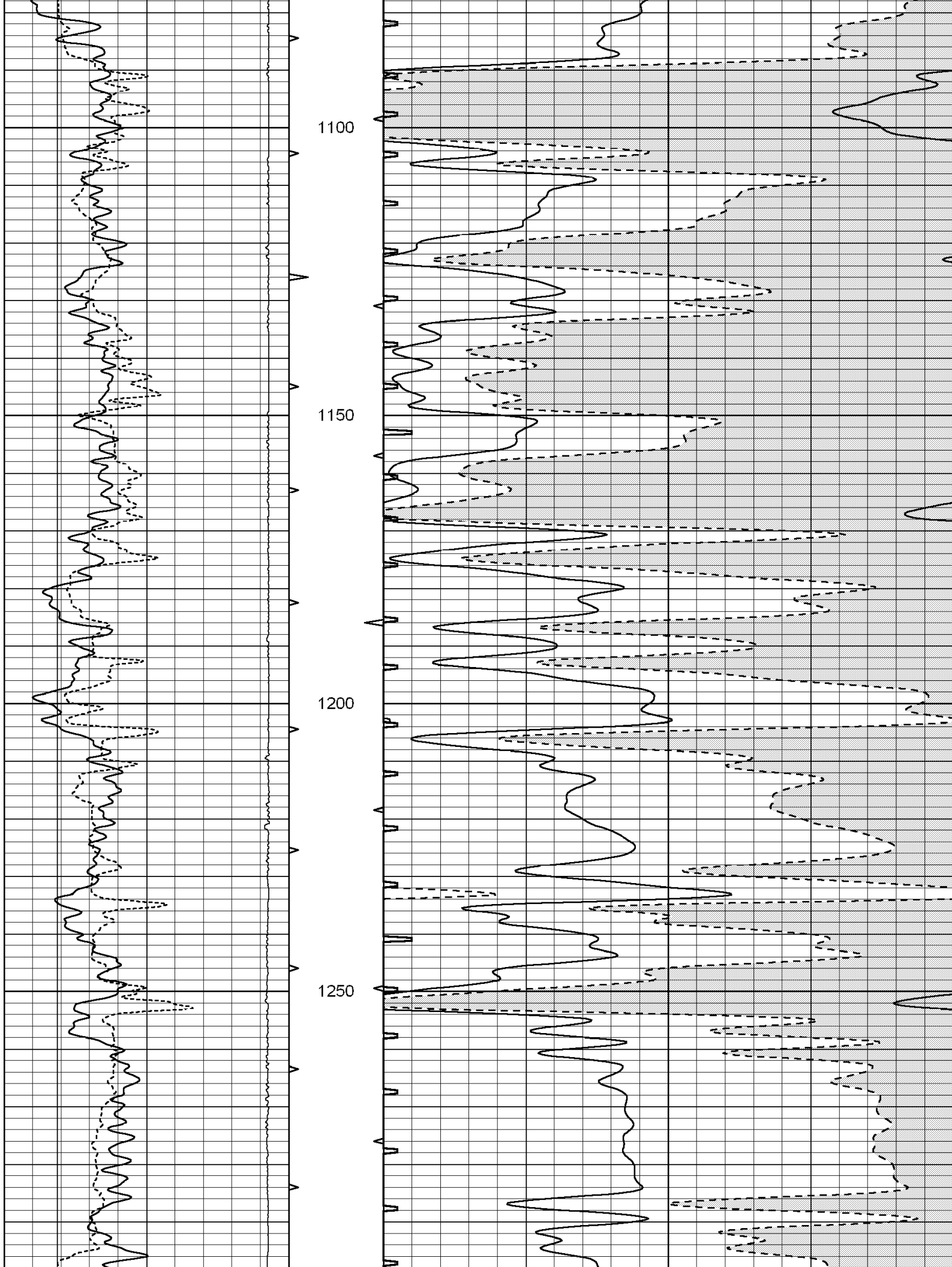
550

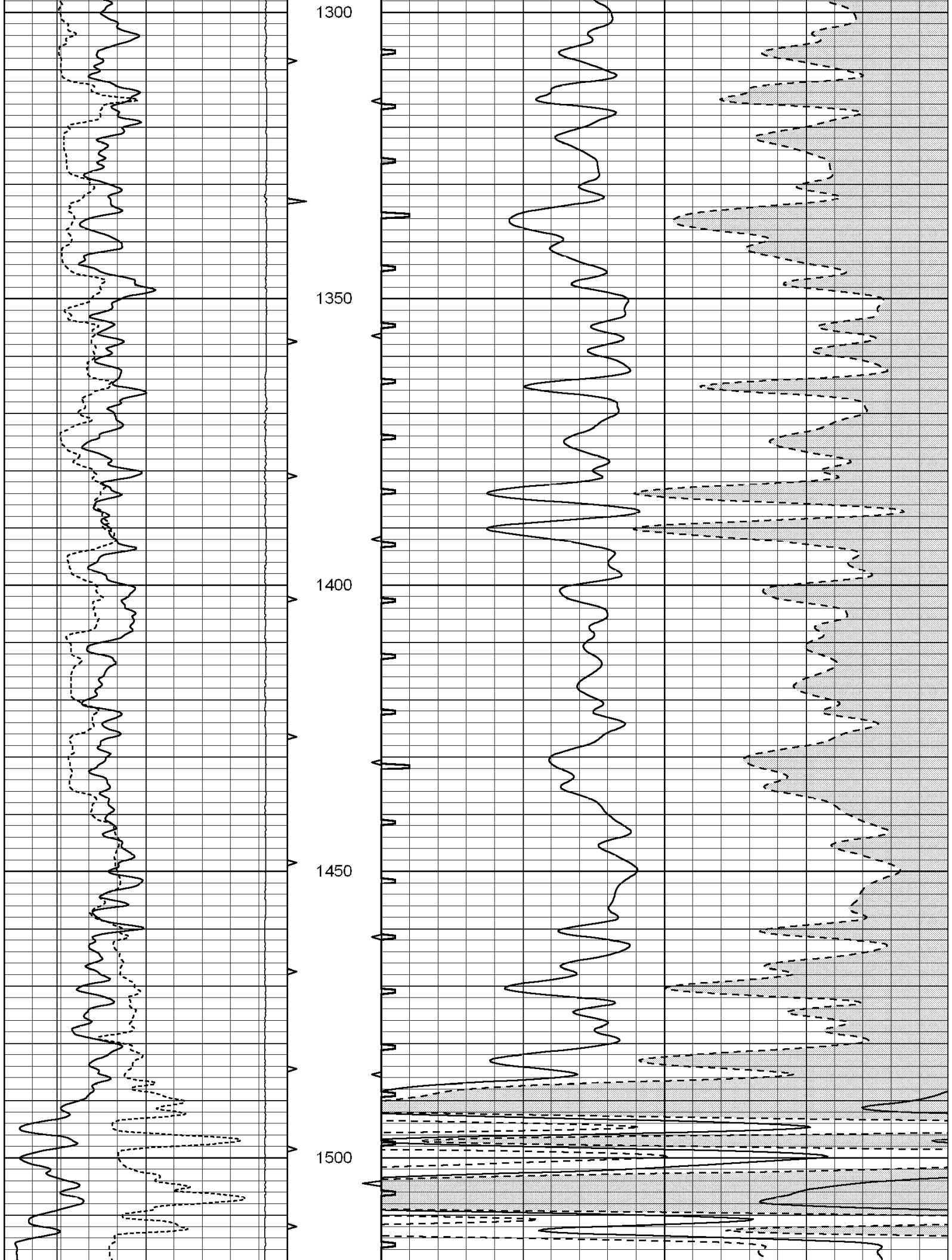
600

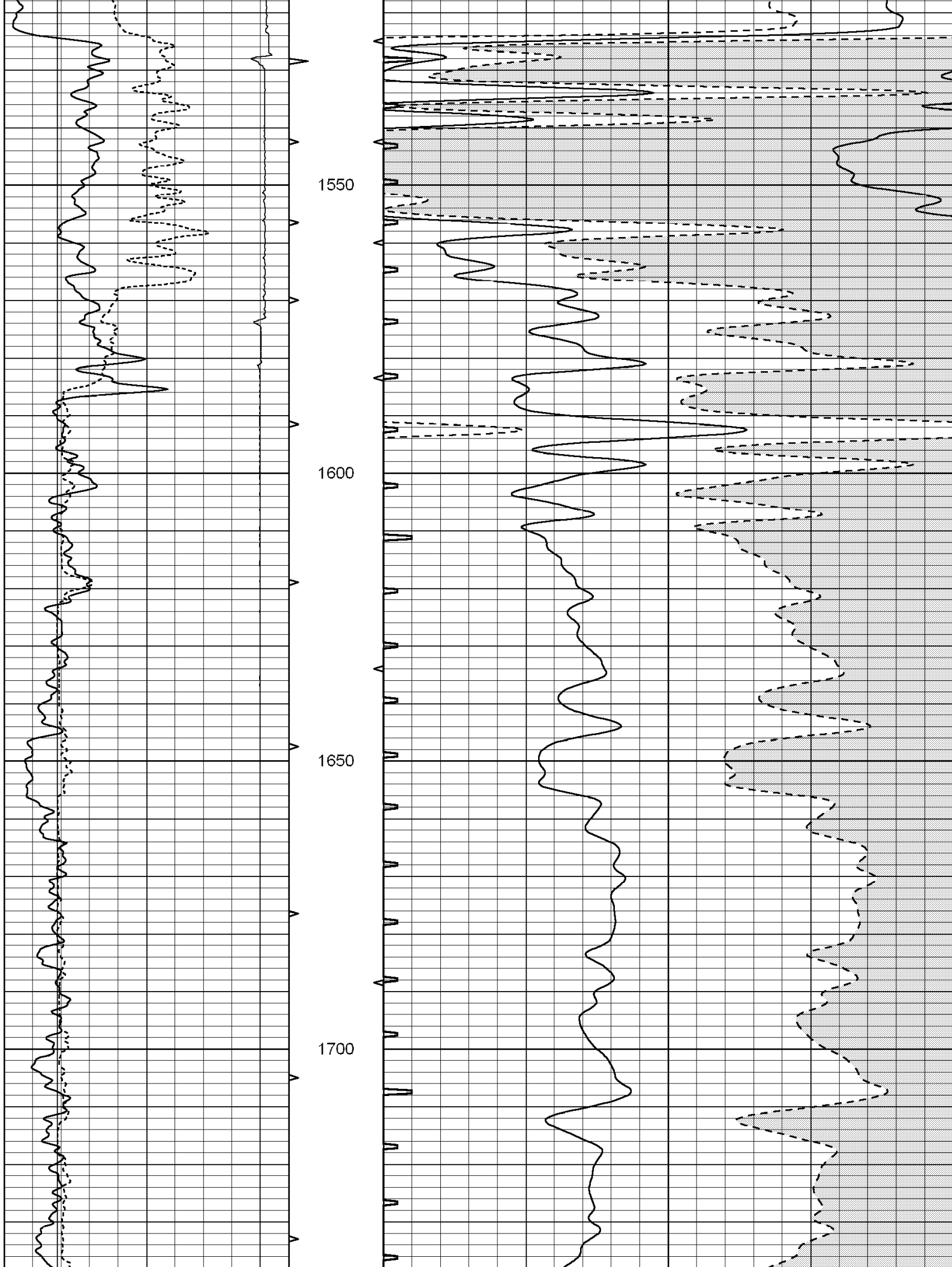


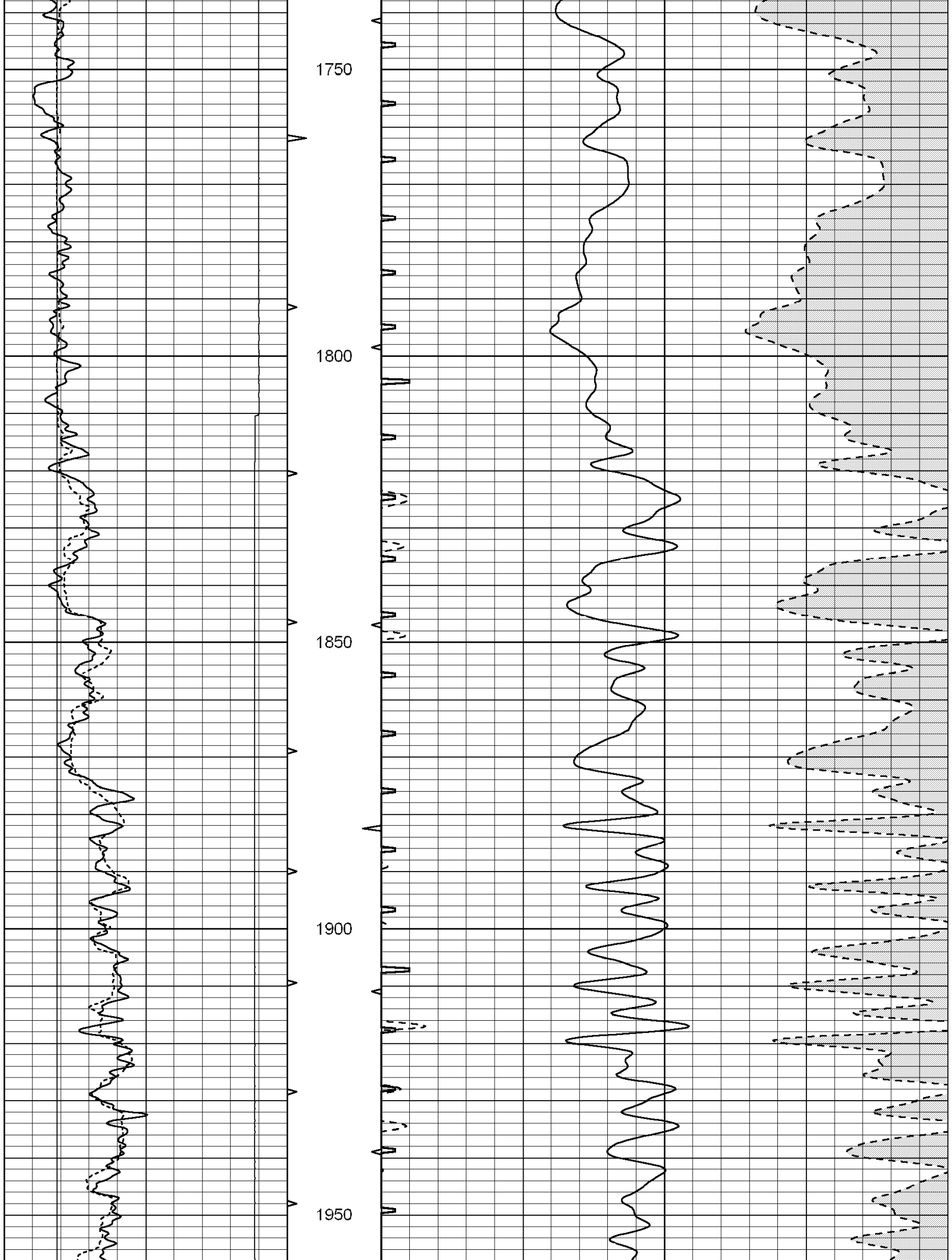


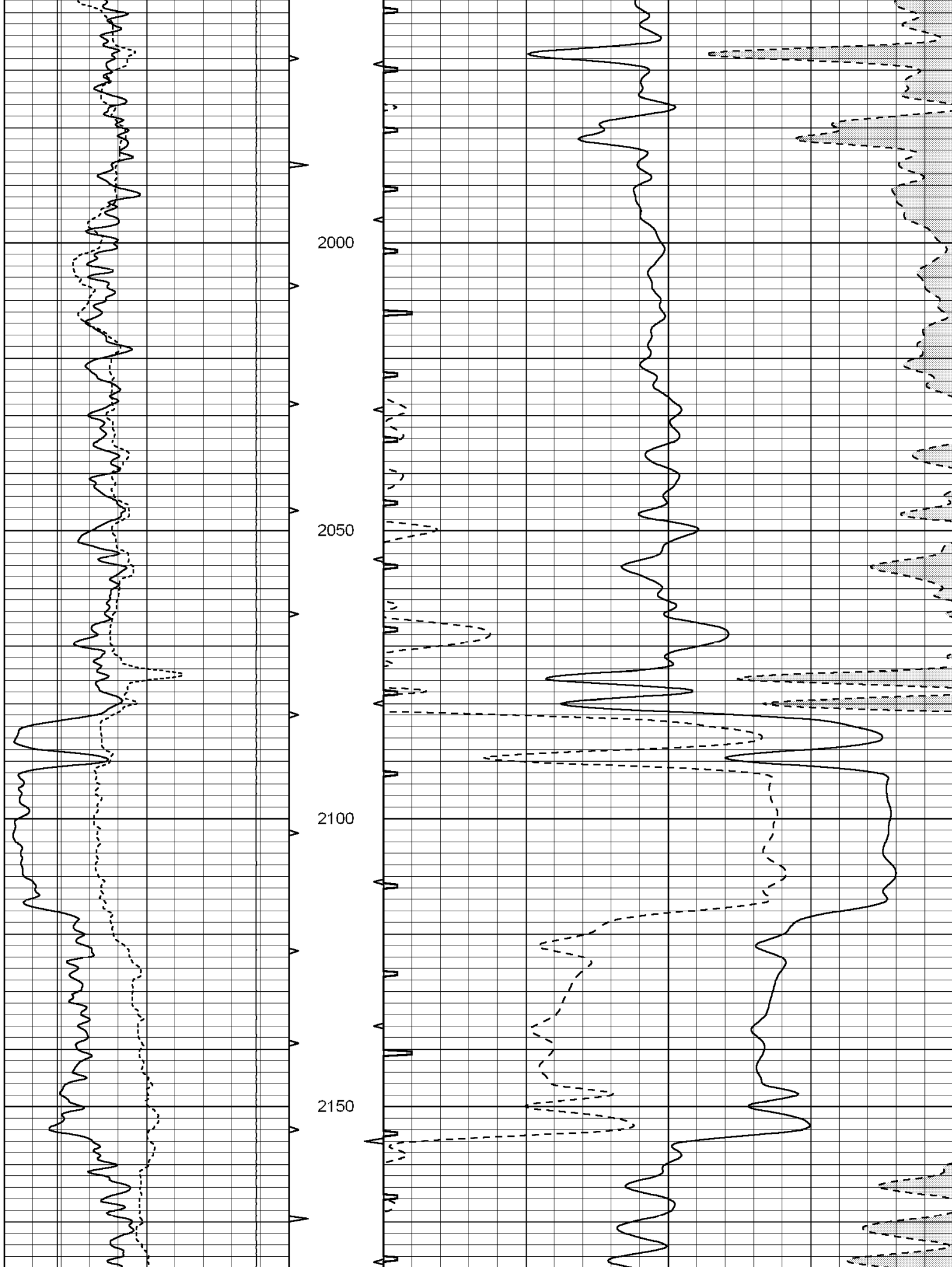


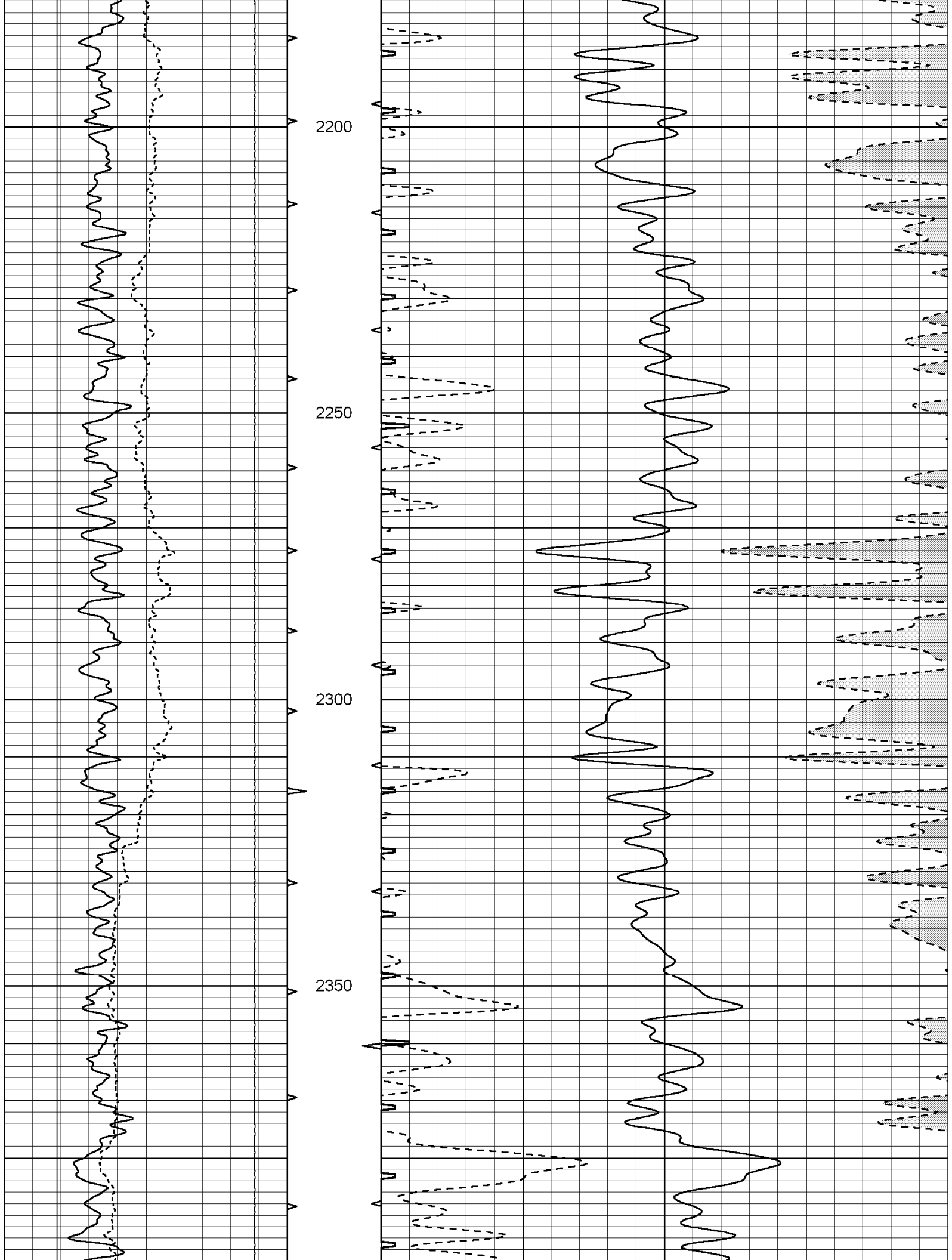


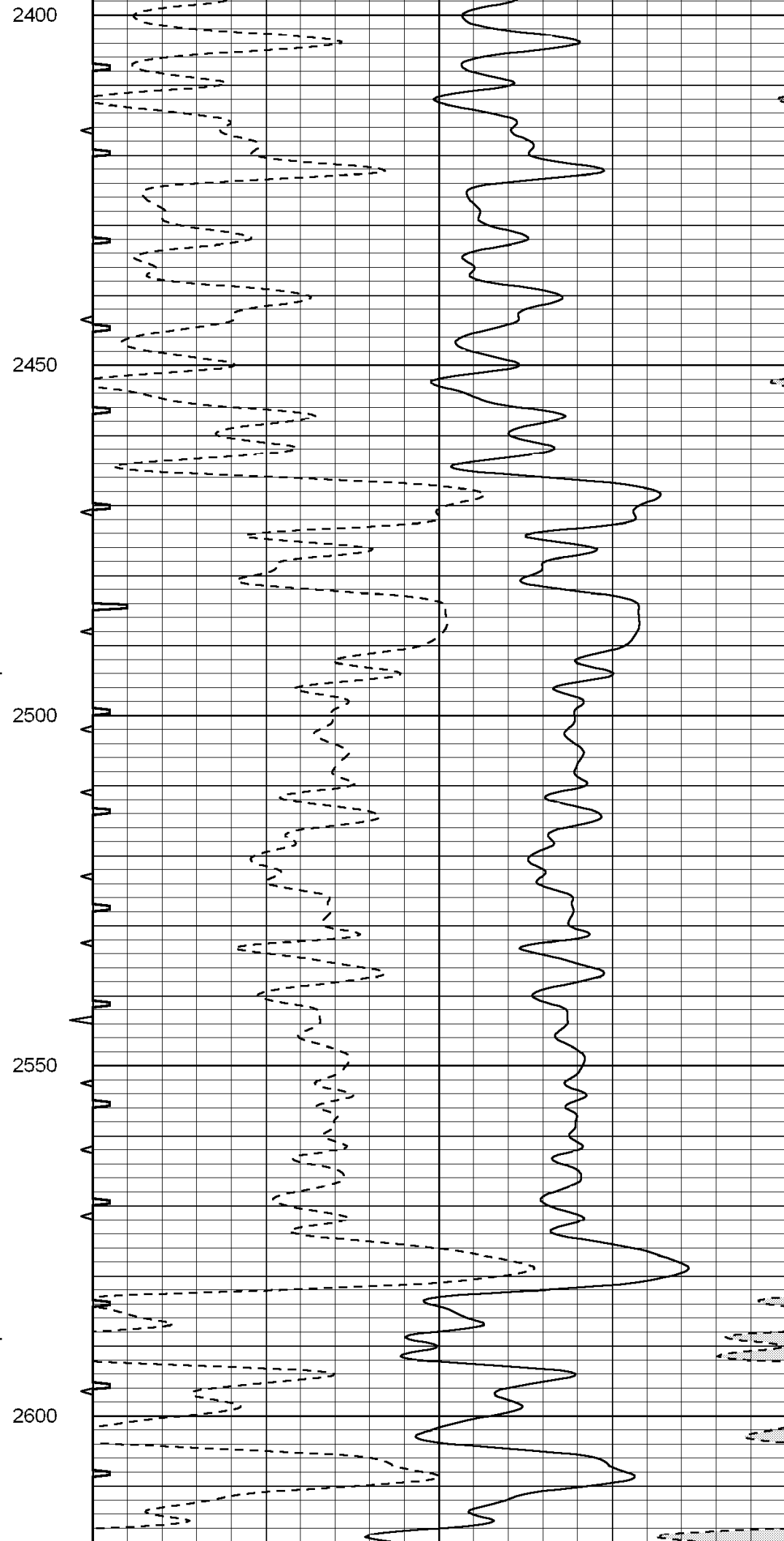
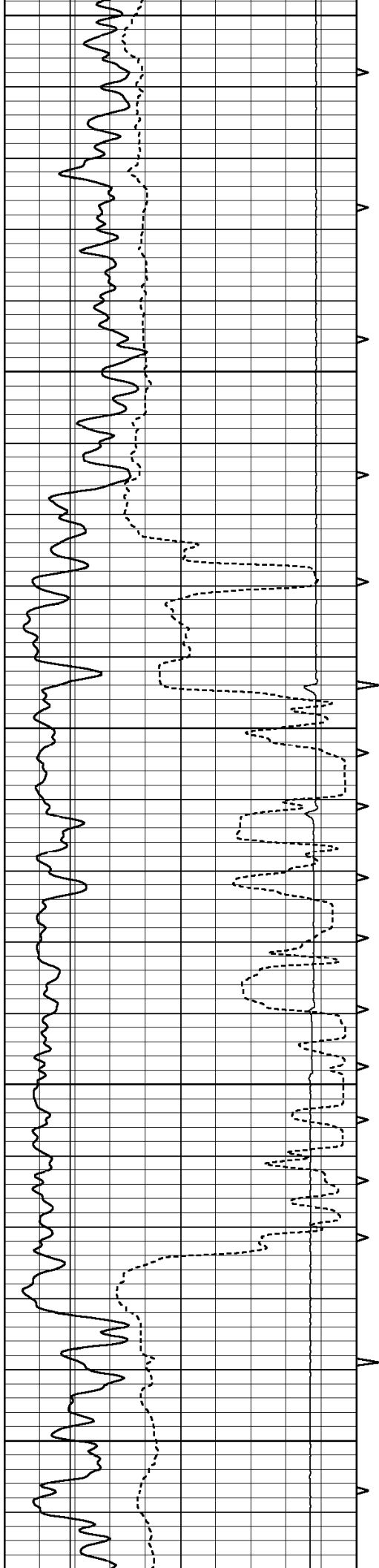


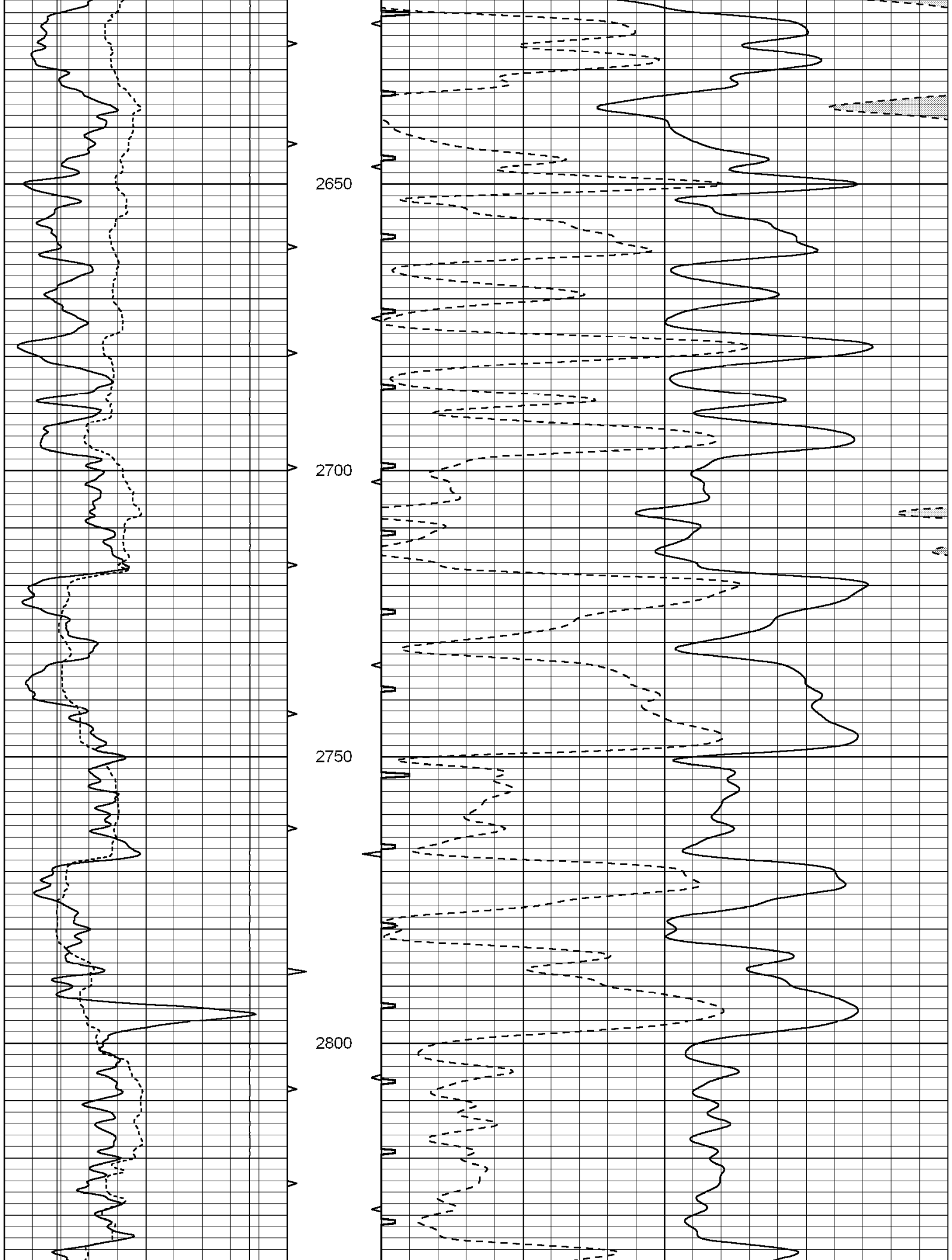


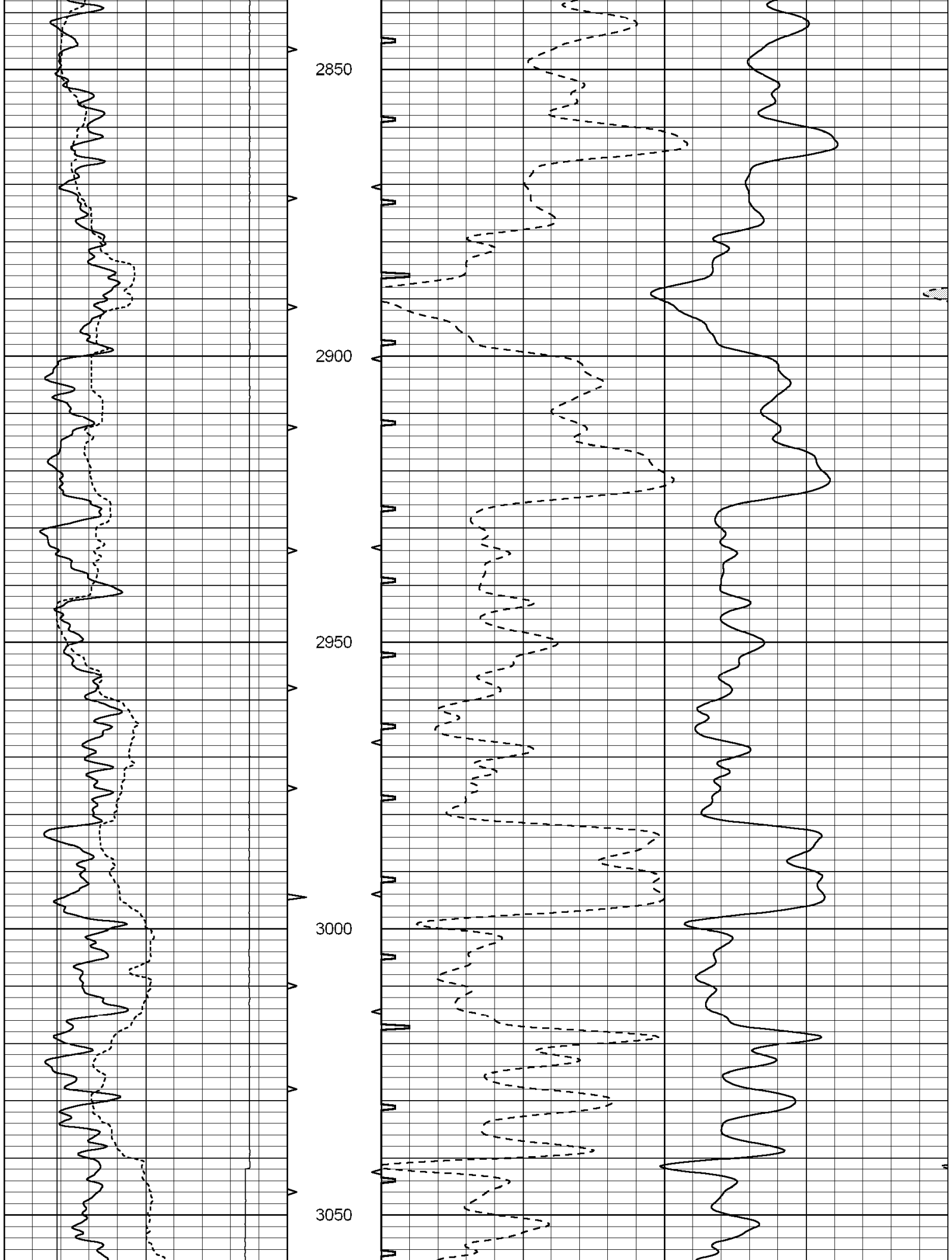


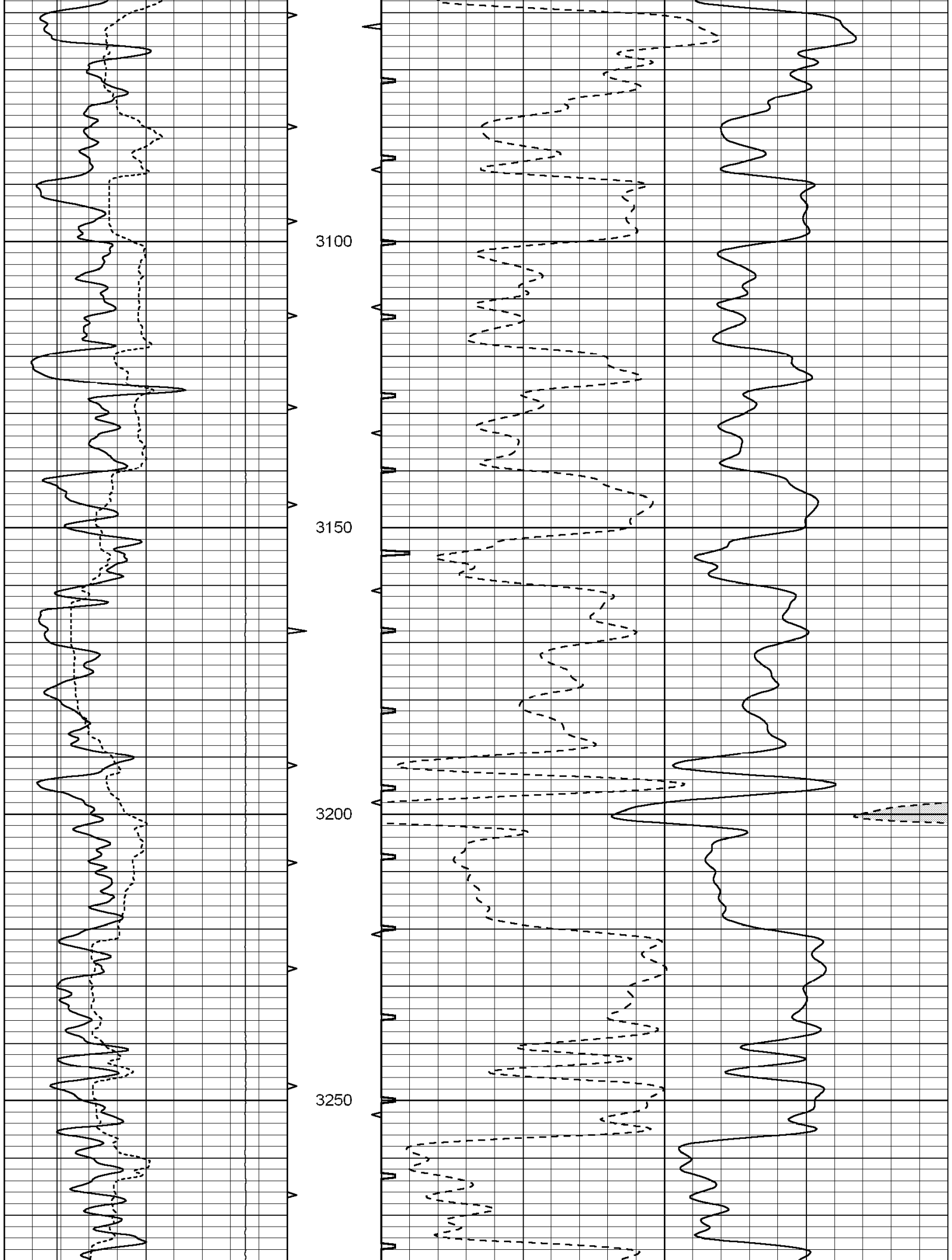


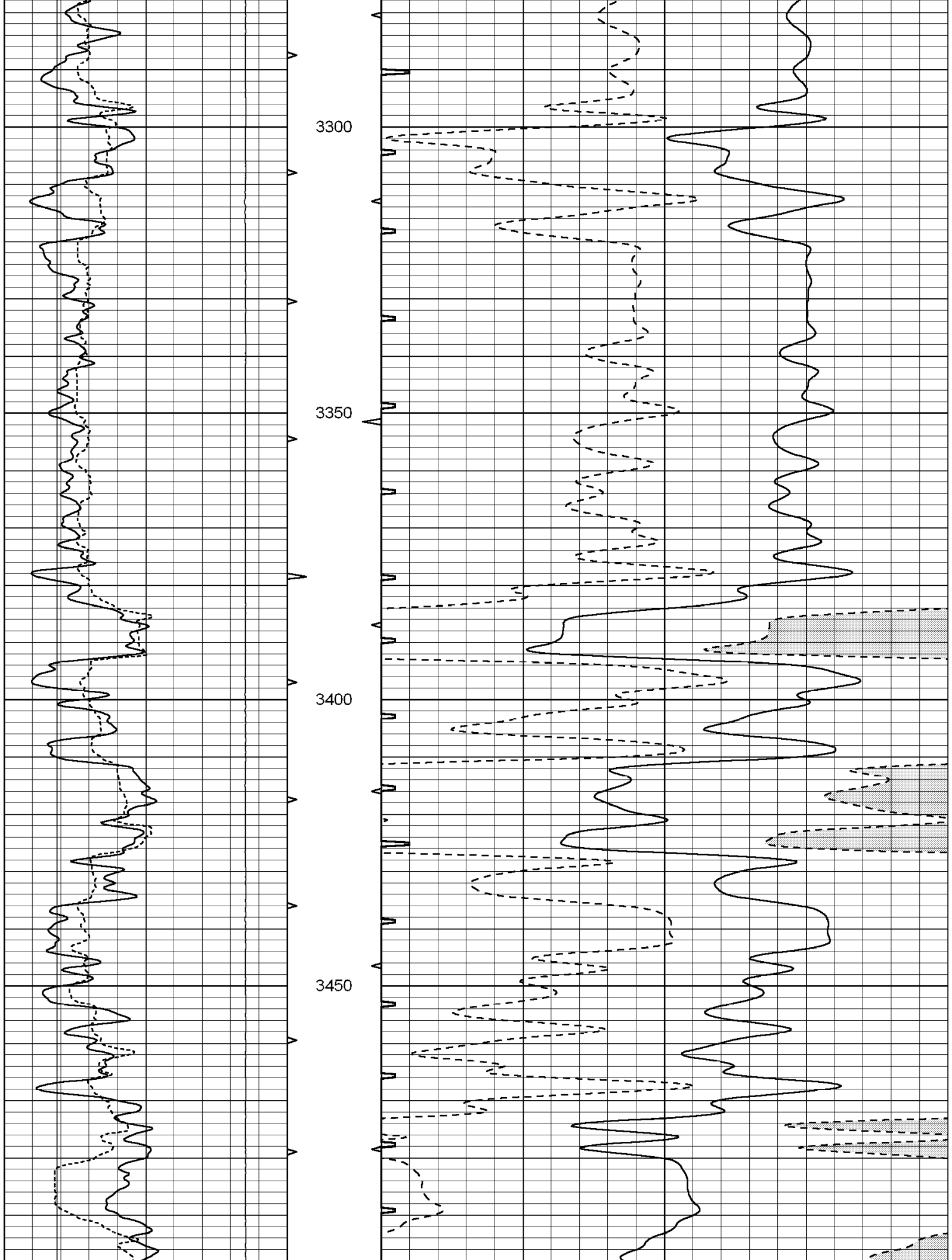


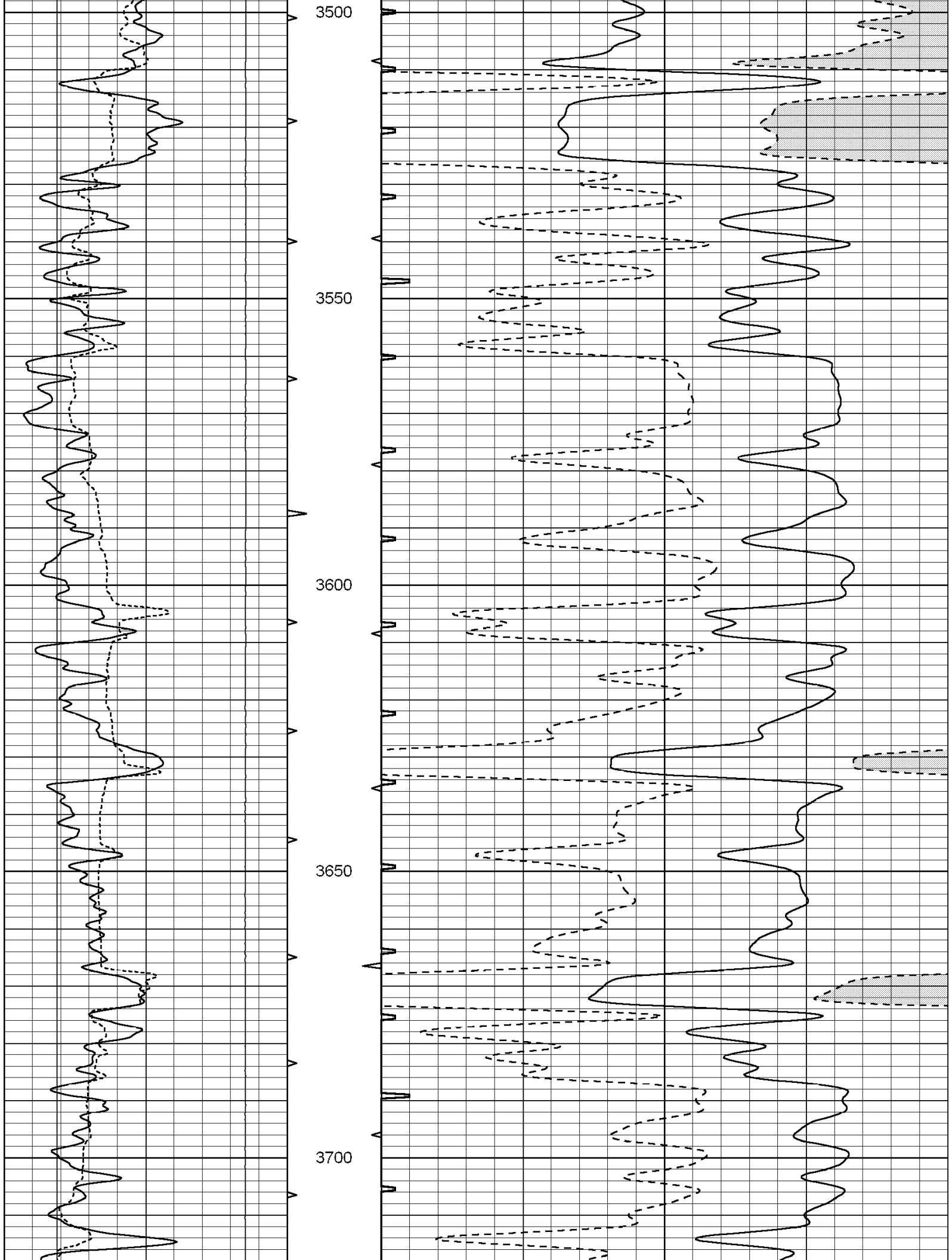


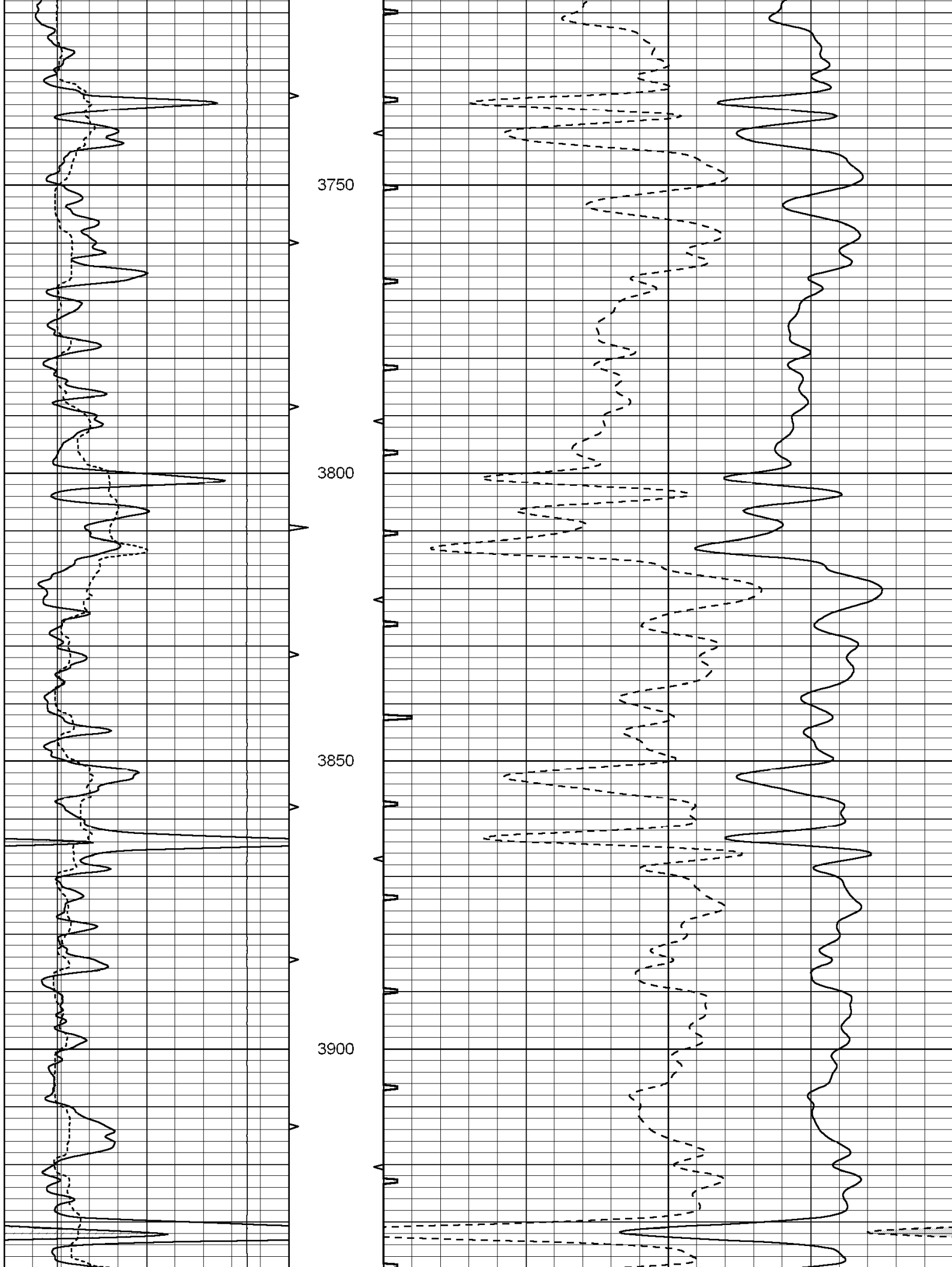


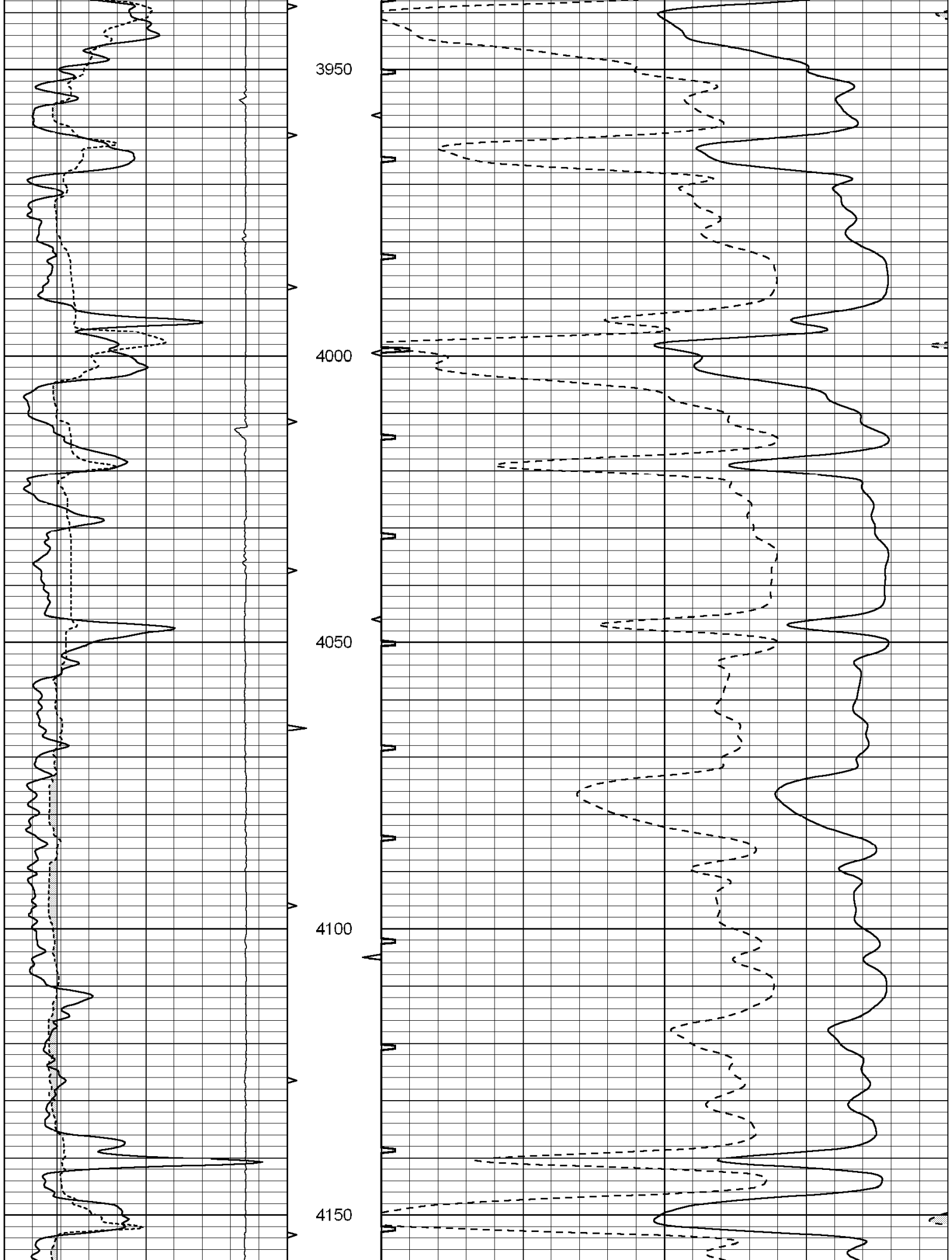


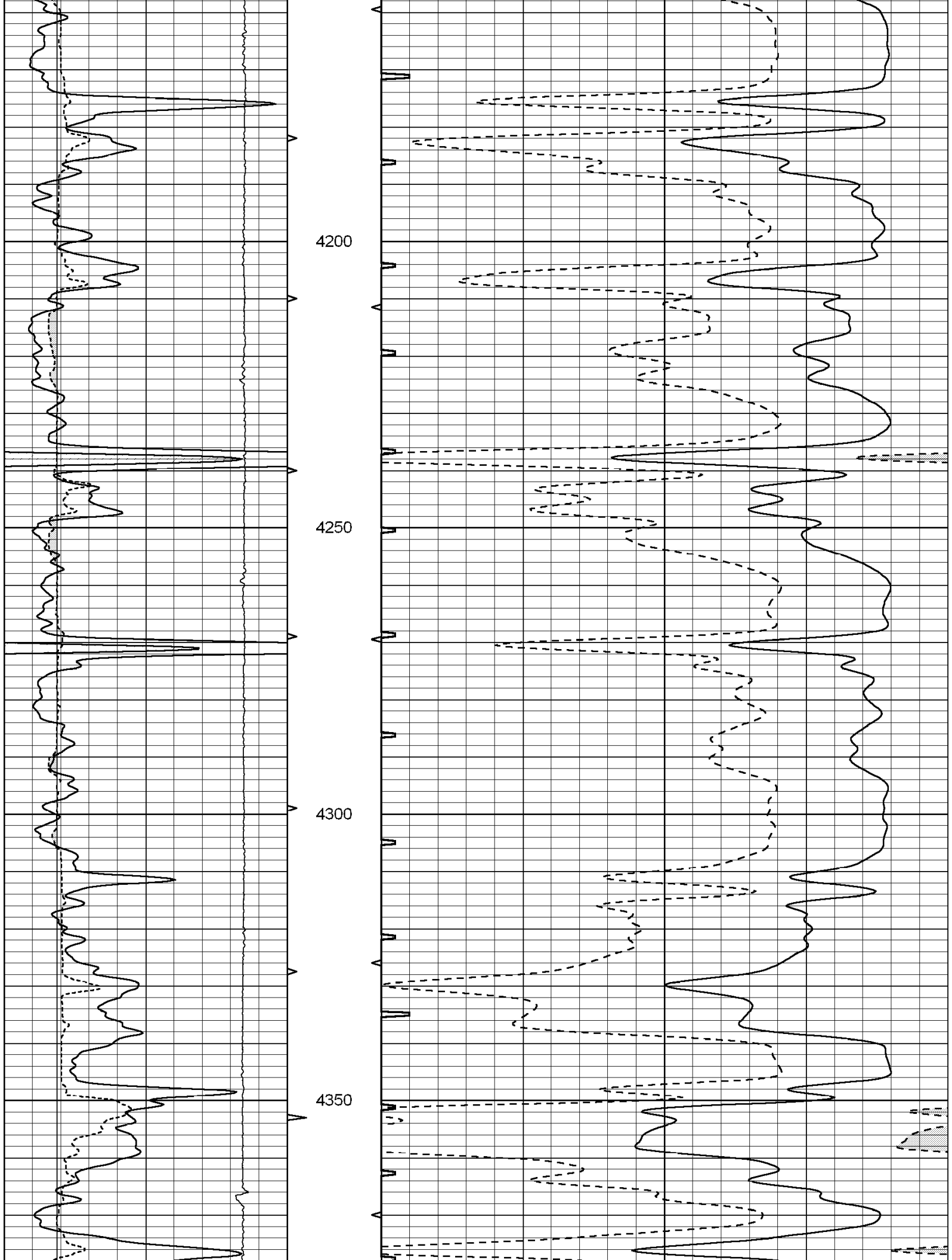


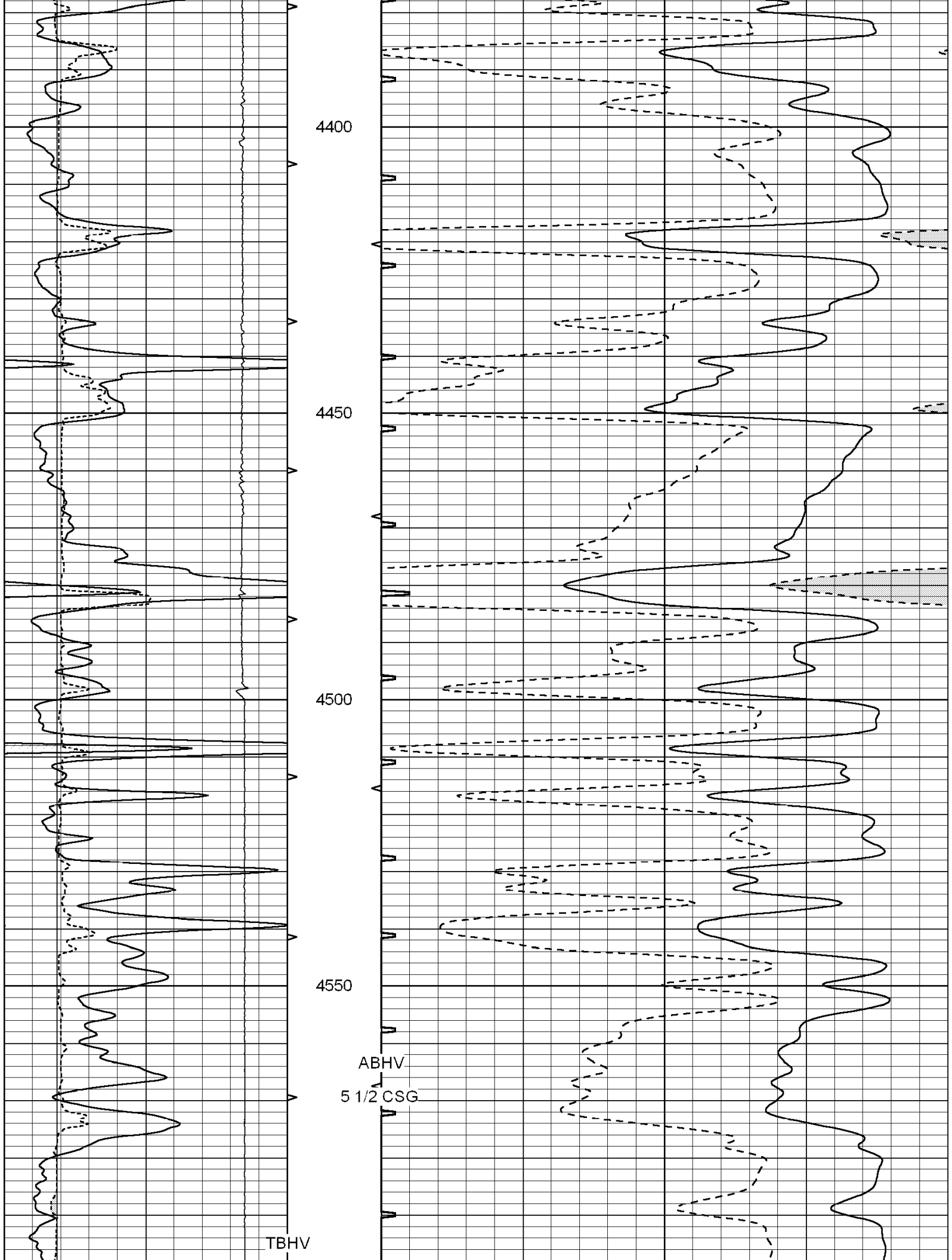












4400

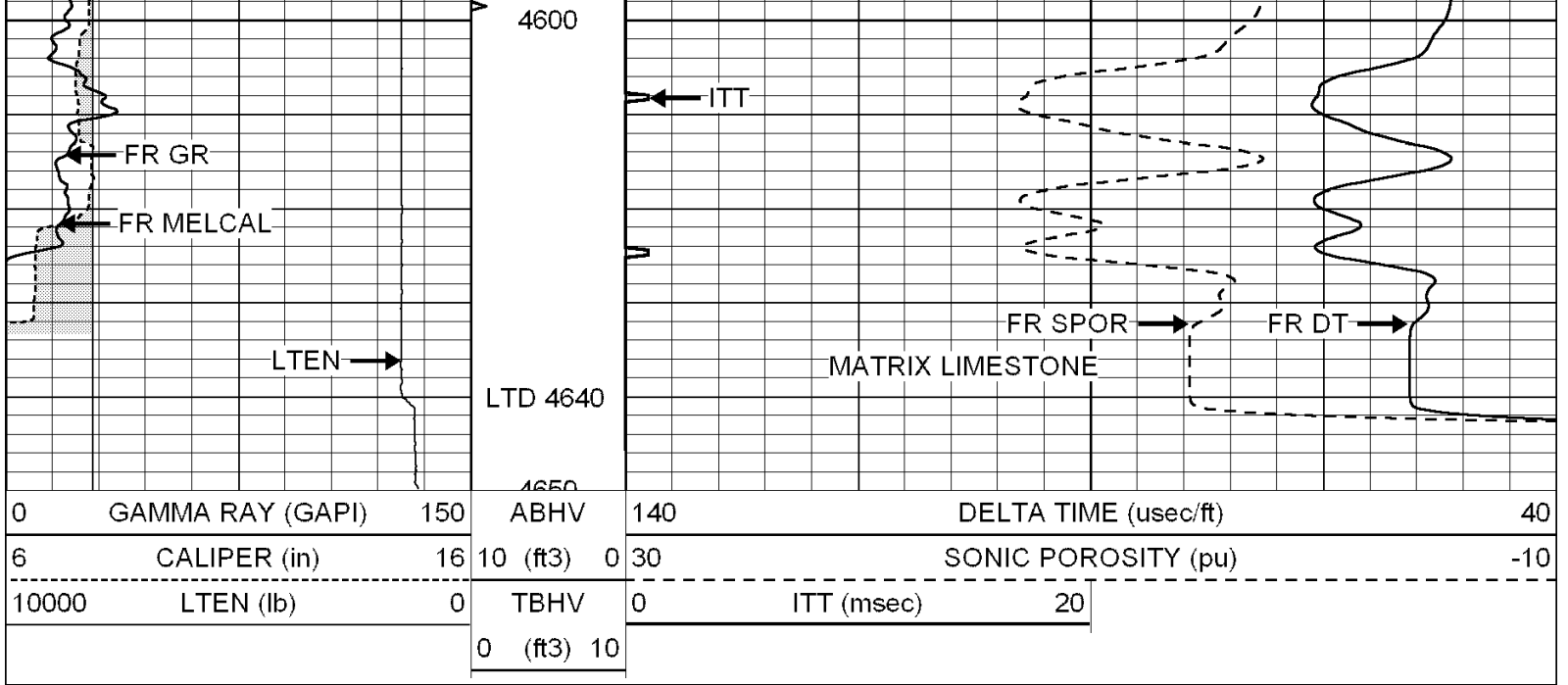
4450

4500

4550

ABHV
5 1/2 CSG

TBHV

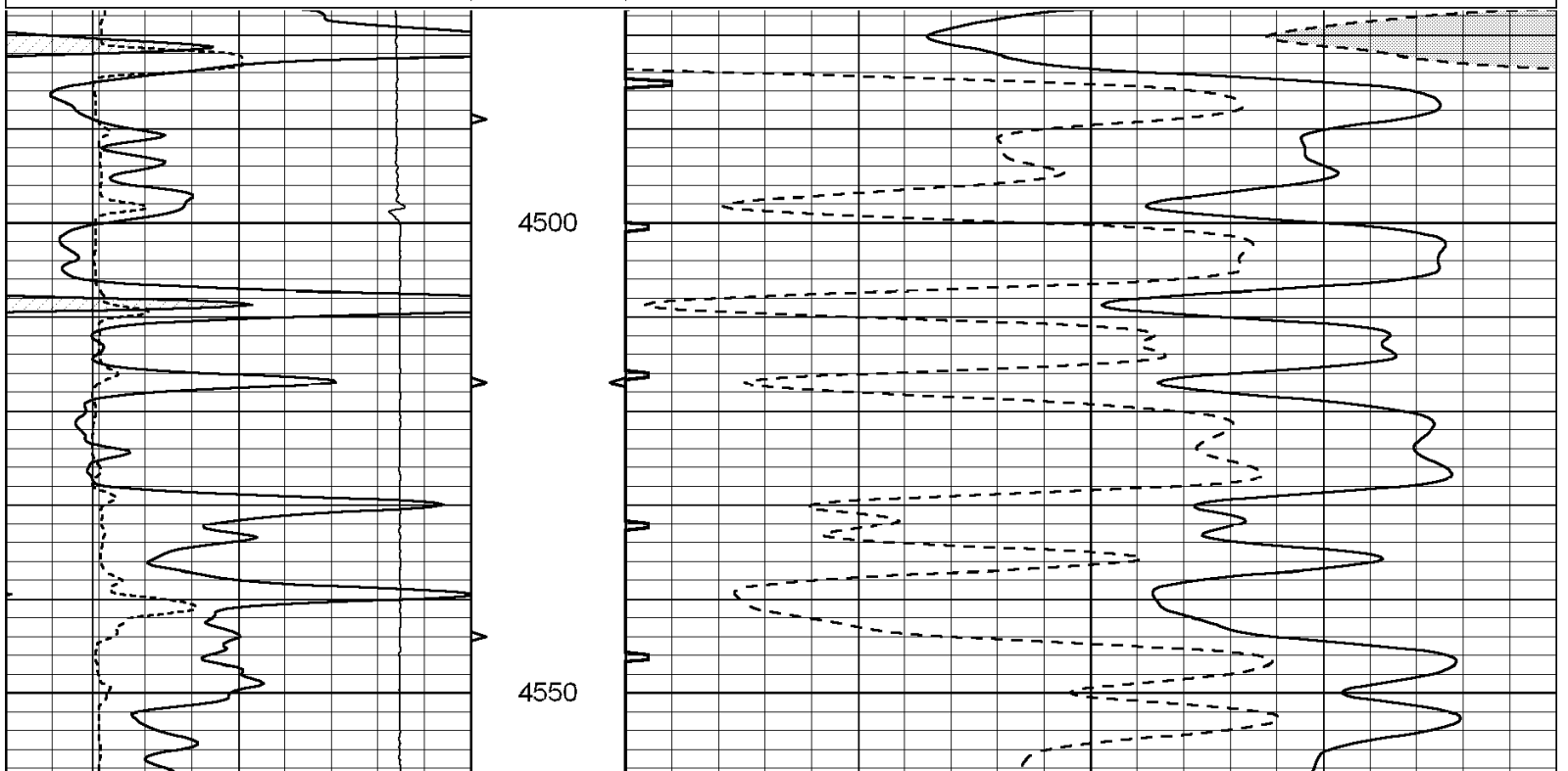


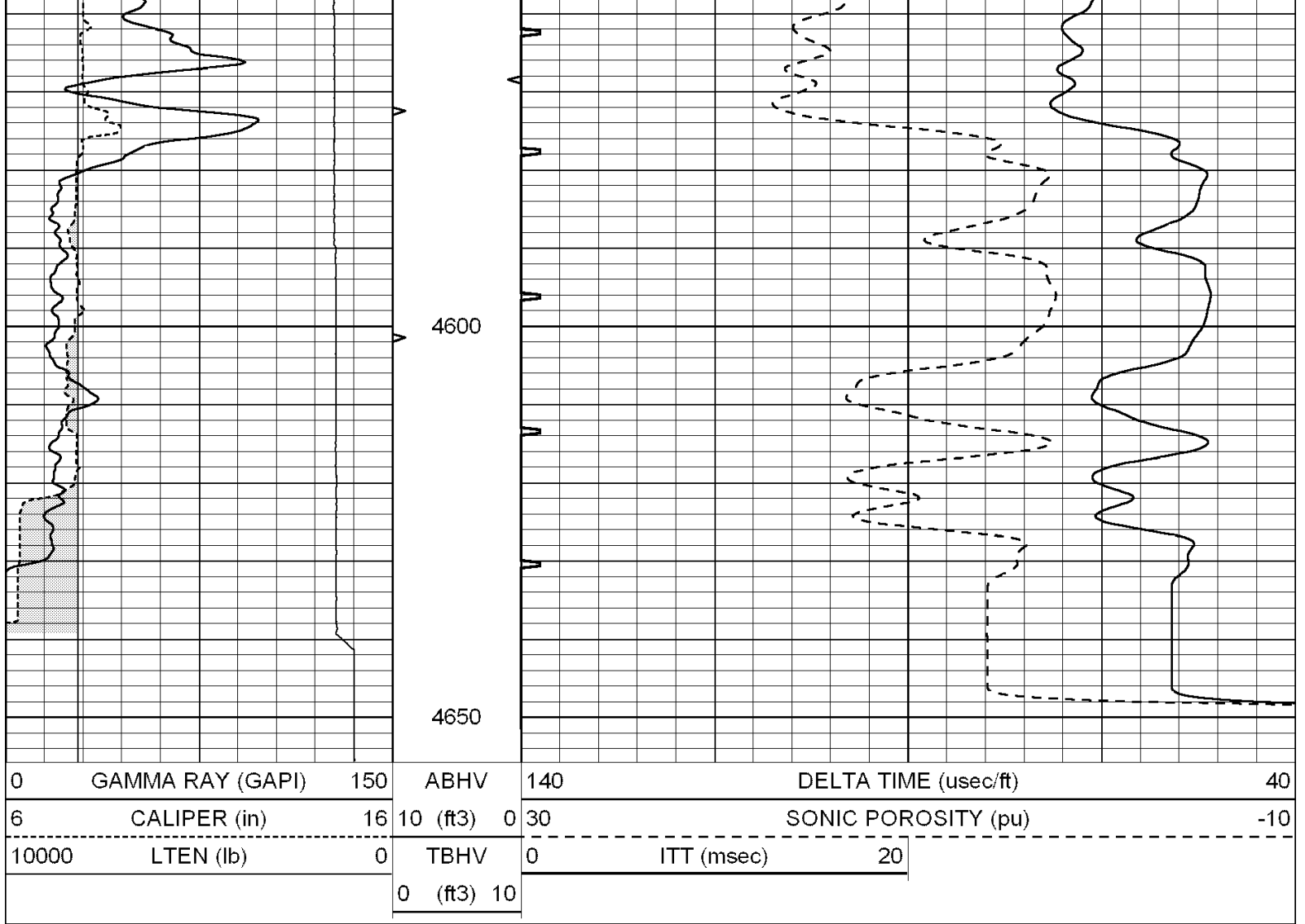
SUPERIOR
Hays,
Kansas

REPEAT SECTION

Database File: 3192mulldrill.db
 Dataset Pathname: pass4.2
 Presentation Format: _slt
 Dataset Creation: Thu Feb 12 08:59:14 2009 by Calc Open-Cased 070814
 Charted by: Depth in Feet scaled 1:240

0	GAMMA RAY (GAPI)	150	ABHV	140	DELTA TIME (usec/ft)	40
6	CALIPER (in)	16	10 (ft3) 0	30	SONIC POROSITY (pu)	-10
10000	LTEN (lb)	0	TBHV	0	ITT (msec)	20
			0 (ft3) 10			





Calibration Report

Database File: 3192mulldrill.db
 Dataset Pathname: pass5.1
 Dataset Creation: Thu Feb 12 09:41:17 2009 by Calc Open-Cased 070814

MICRO Calibration Report

Serial Number: MICRO3
 Tool Model: PROBE
 Performed: Thu Feb 12 08:25:58 2009

Caliper Calibration: Gain=2.969 Offset=-2.505

References	Low Cal	High Cal
Readings	8.375	13.250
	3.395	5.037

1.5" Calibration: Gain=91.940 Offset=0.525

References	Low Cal	High Cal
Readings	0.000	20.000
	0.006	0.223

2" Calibration: Gain=119.050 Offset=-1.099

References	Low Cal	High Cal
Readings	0.000	20.000
	0.009	0.177

Gamma Ray Calibration Report

Serial Number:	GR6	
Tool Model:	OPEN	
Performed:	Mon Feb 09 12:32:10 2009	
Calibrator Value:	150.0	GAPI
Background Reading:	0.0	cps
Calibrator Reading:	351.0	cps
Sensitivity:	0.4274	GAPI/cps