



**SUPERIOR**  
Hays,  
Kansas

**MICRO**  
LOG

Company MULL DRILLING CO. INC.  
Well LILA #1-12  
Field WC  
County LANE  
State KANSAS

Company MULL DRILLING COMPANY, INC.  
Well LILA #1-12  
Field WC  
County LANE  
State KANSAS

Location: API # : 15-101-22150-0000  
NE/4 NE/4  
1178'FNL & 339'FEL  
SEC 12 TWP 18S RGE 28W  
Permanent Datum GROUND LEVEL Elevation 2709  
Log Measured From KELLY BUSHING 5' A.G.L.  
Drilling Measured From KELLY BUSHING  
Other Services  
CDL/CNL  
DIL/SONIC  
Elevation  
K.B. 2714  
D.F.  
G.L. 2709

Date	12 FEB 09
Run Number	ONE
Depth Driller	4645
Depth Logger	4640
Bottom Logged Interval	4623
Top Log Interval	3700
Casing Driller	8 5/8 @ 232'
Casing Logger	232
Bit Size	7 7/8
Type Fluid In Hole	CHEMICAL MUD
Density / Viscosity	9.6/57
pH / Fluid Loss	8.5/11.2
Source of Sample	FLOWLINE
Rm @ Meas. Temp	1.1 @ 75
Rmf @ Meas. Temp	1.0 @ 75
Rmc @ Meas. Temp	1.2 @ 75
Source of Rmf / Rmc	CAL/CAL
Rm @ BHT	0.8 @ 111
Time Circulation Stopped	2 HOURS
Time Logger on Bottom	0630
Maximum Recorded Temperature	111
Equipment Number	680
Location	HAYS, KS
Recorded By	DUGAN DENTON
Witnessed By	PHIL ASKEY

<<< Fold Here >>>

All interpretations are opinions based on inferences from electrical or other measurements and we cannot and do not guarantee the accuracy or correctness of any interpretation, and we shall not, except in the case of gross or willful negligence on our part, be liable or responsible for any loss, costs, damages, or expenses incurred or sustained by anyone resulting from any interpretation made by any of our officers, agents or employees. These interpretations are also subject to our general terms and conditions set out in our current Price Schedule.

**Comments**

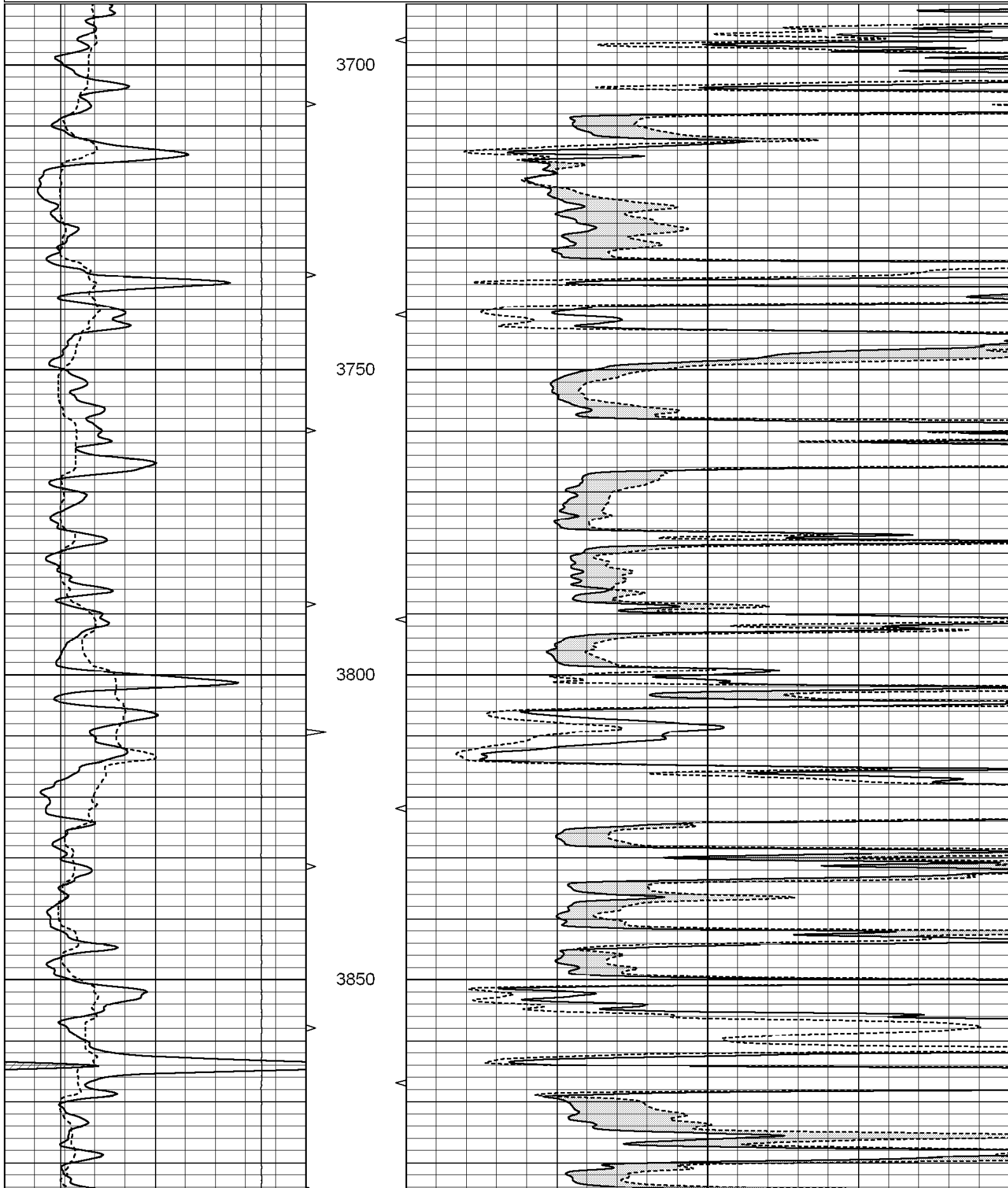
THANK YOU FOR USING SUPERIOR WELL SERVICES  
HAYS, KS. 785-628-6395

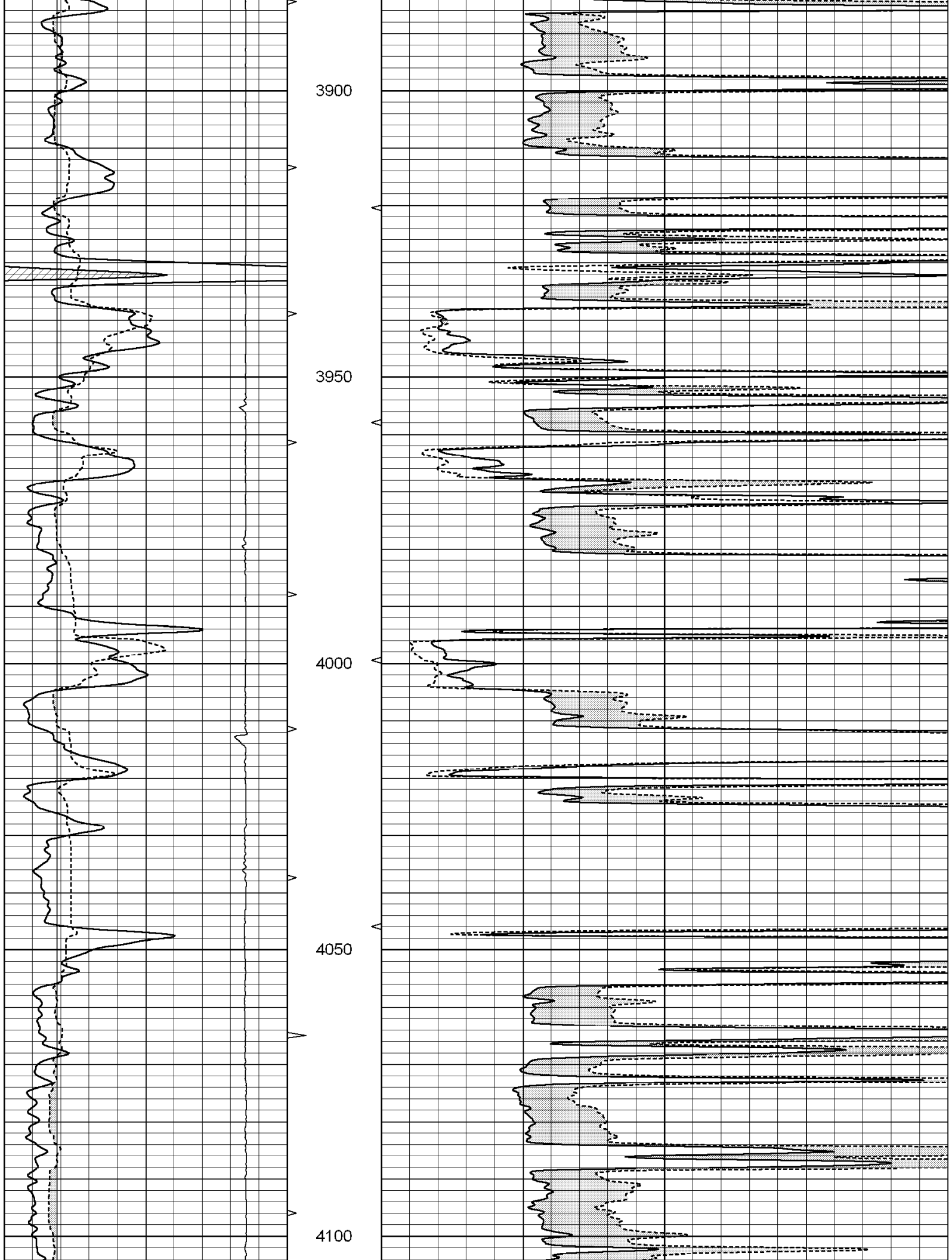
DIRECTIONS: DIGHTON; 5 EAST TO PAWNEE RD, 2 NORTH, 1 EAST INTO

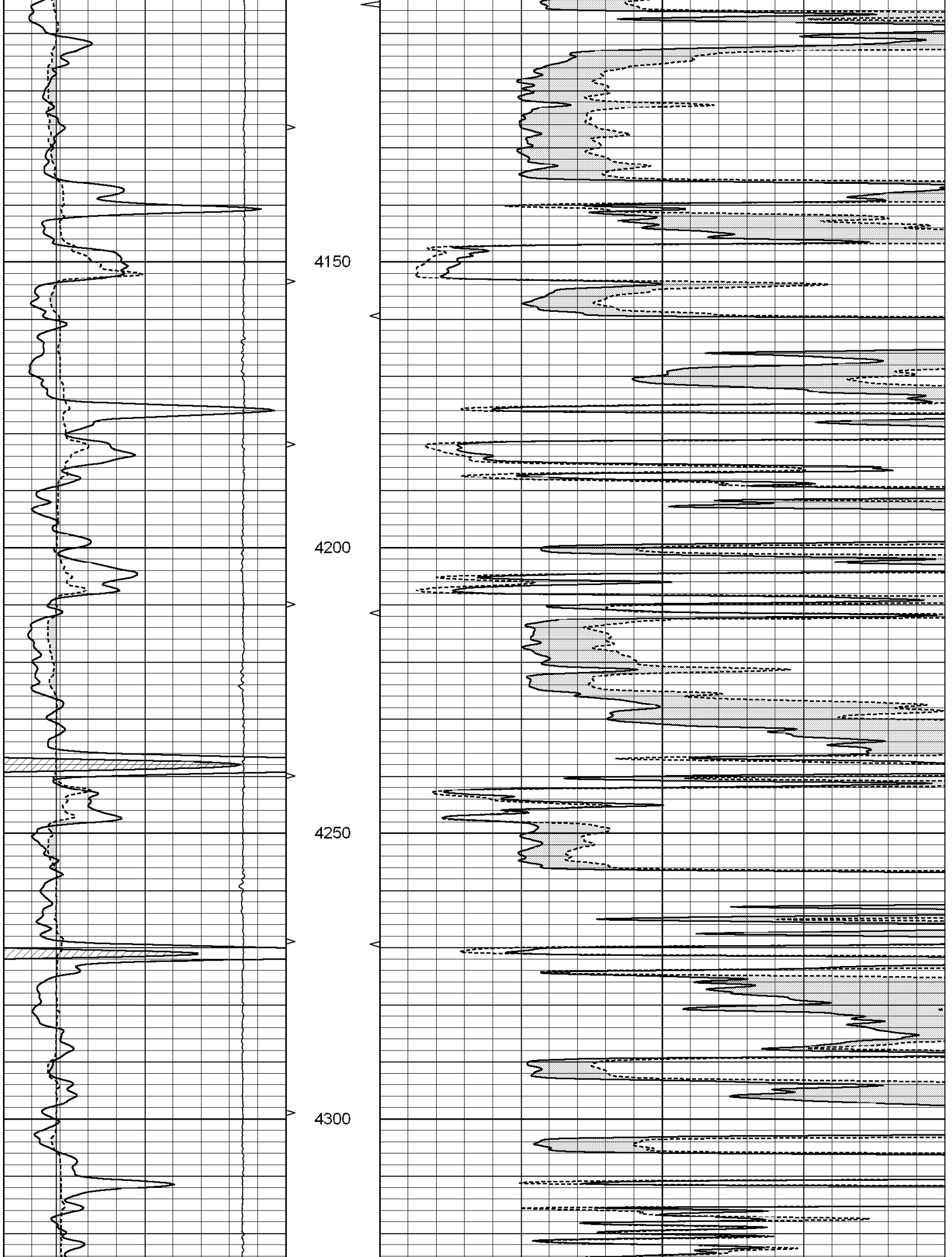
Charted by:

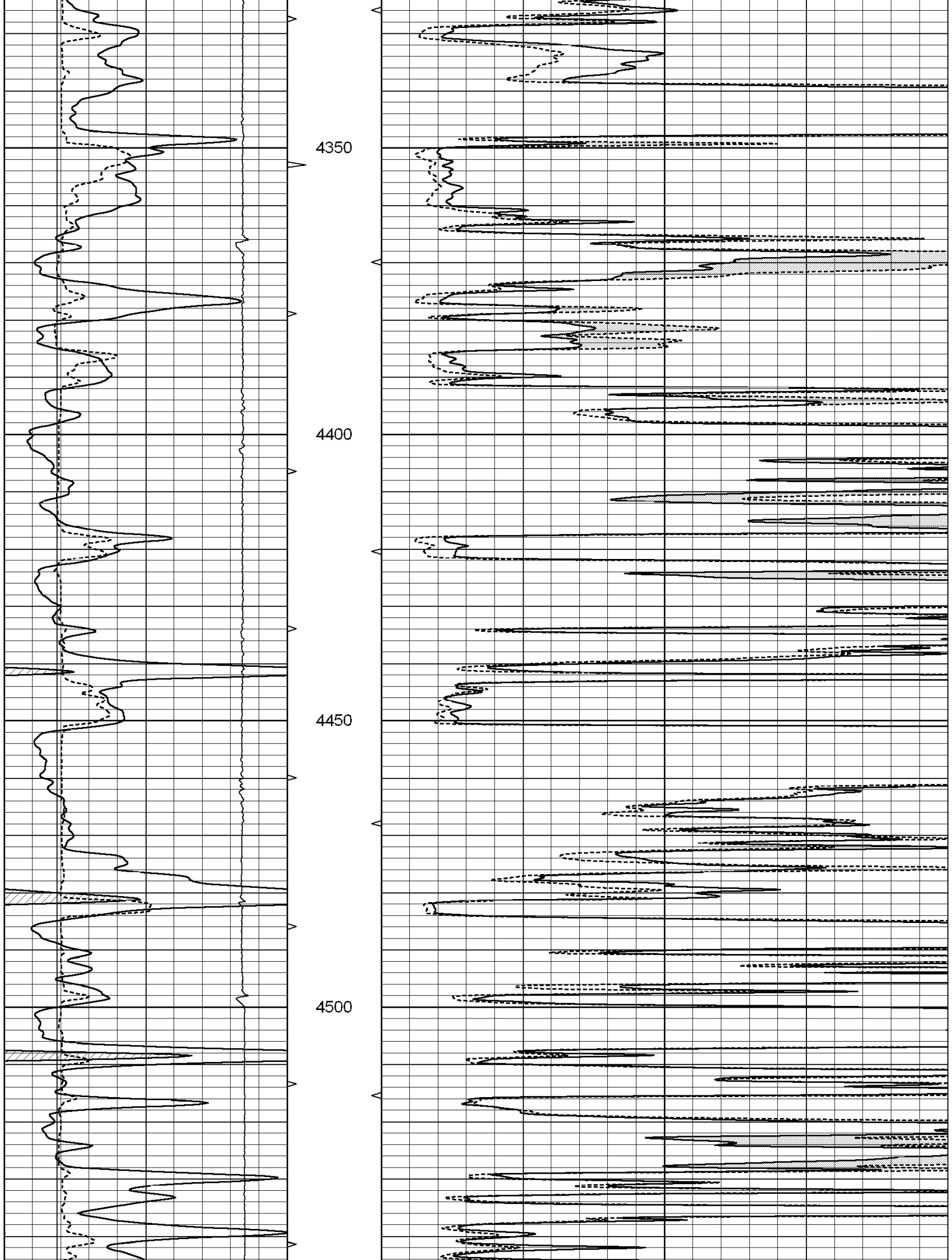
Depth in Feet scaled 1:240

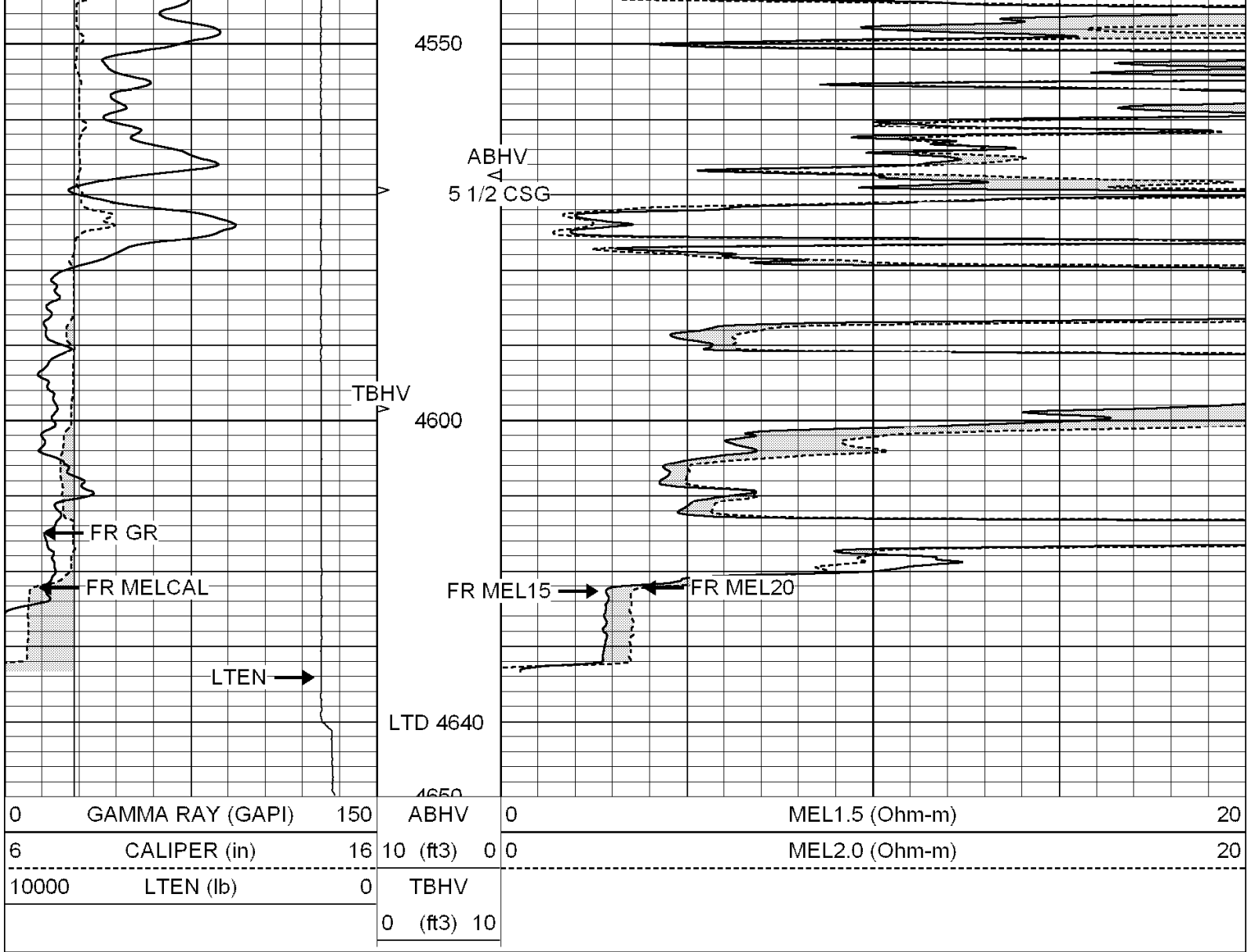
0	GAMMA RAY (GAPI)	150	ABHV	0	MEL1.5 (Ohm-m)	20
6	CALIPER (in)	16	10 (ft3)	0 0	MEL2.0 (Ohm-m)	20
10000	LTEN (lb)	0	TBHV			
			0 (ft3)	10		









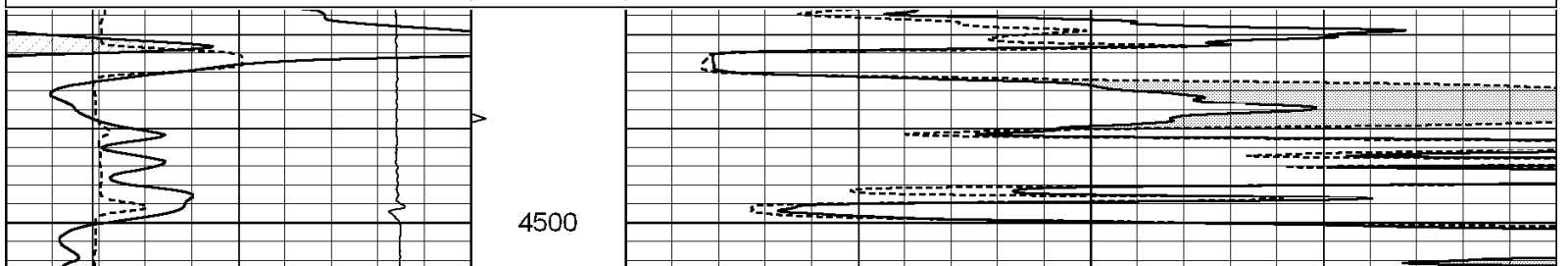


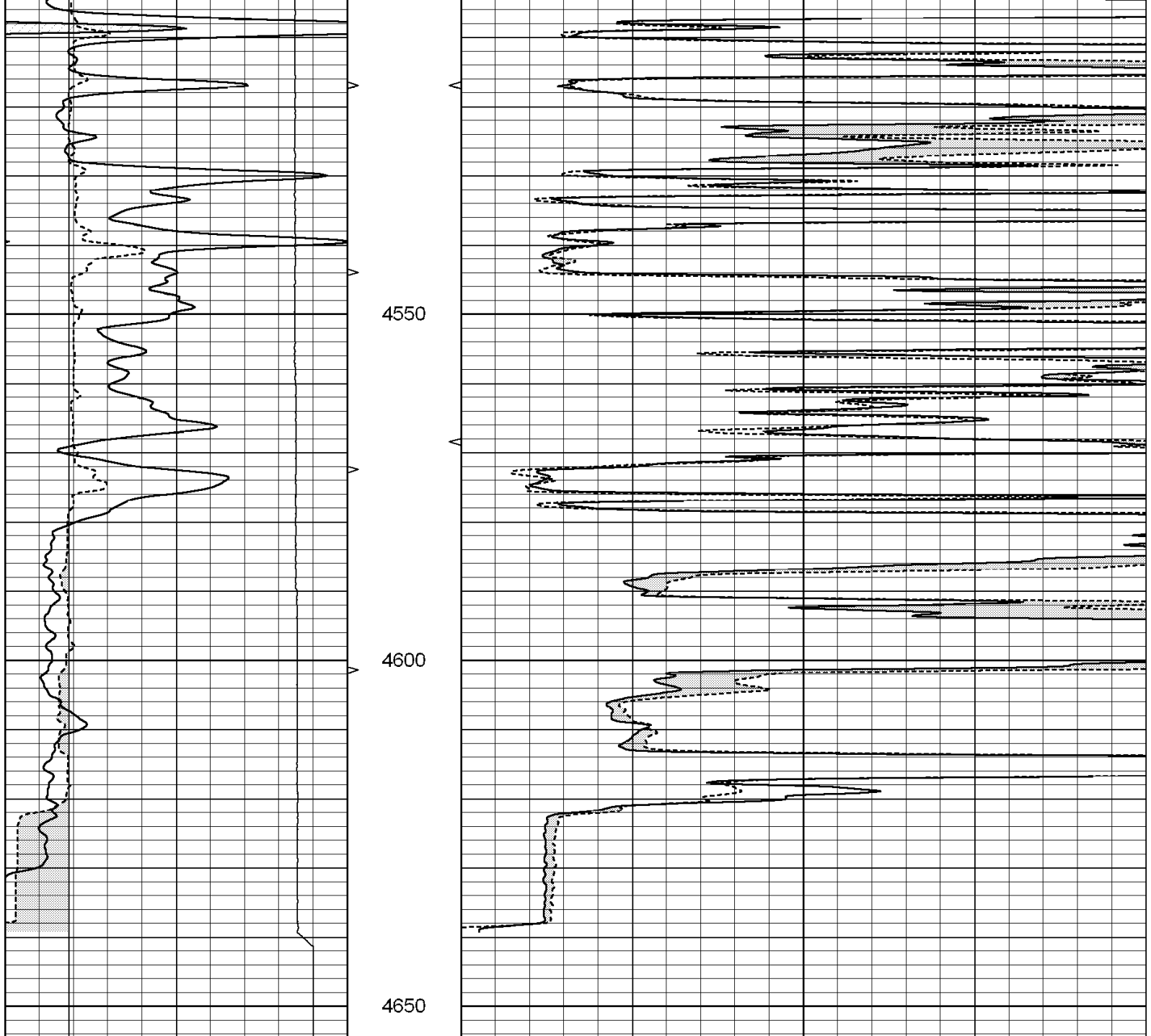
SUPERIOR  
Hays,  
Kansas

# REPEAT SECTION

Database File: 3192mulldrill.db  
 Dataset Pathname: pass4.2  
 Presentation Format: \_micro  
 Dataset Creation: Thu Feb 12 08:59:14 2009 by Calc Open-Cased 070814  
 Charted by: Depth in Feet scaled 1:240

0	GAMMA RAY (GAPI)	150	ABHV	0	MEL1.5 (Ohm-m)	20
6	CALIPER (in)	16	10 (ft3) 0	0	MEL2.0 (Ohm-m)	20
10000	LTEN (lb)	0	TBHV			
			0 (ft3) 10			





0	GAMMA RAY (GAPI)	150	ABHV	0	MEL1.5 (Ohm-m)	20
6	CALIPER (in)	16	10 (ft3)	0	MEL2.0 (Ohm-m)	20
10000	LTEN (lb)	0	TBHV			
			0 (ft3)	10		

**Calibration Report**

Database File: 3192mulldrill.db  
 Dataset Pathname: pass5.1  
 Dataset Creation: Thu Feb 12 09:41:17 2009 by Calc Open-Cased 070814

**MICRO Calibration Report**

Serial Number: MICRO3  
 Tool Model: PROBE  
 Performed: Thu Feb 12 08:25:58 2009

Caliper Calibration: Gain=2.969      Offset=-2.505

References	Low Cal	High Cal
Readings	8.375	13.250
	3.395	5.037
1.5" Calibration:	Gain=91.940	Offset=0.525
References	Low Cal	High Cal
Readings	0.000	20.000
	0.006	0.223
2" Calibration:	Gain=119.050	Offset=-1.099
References	Low Cal	High Cal
Readings	0.000	20.000
	0.009	0.177
Gamma Ray Calibration Report		
Serial Number:	GR6	
Tool Model:	OPEN	
Performed:	Mon Feb 09 12:32:10 2009	
Calibrator Value:	150.0	GAPI
Background Reading:	0.0	cps
Calibrator Reading:	351.0	cps
Sensitivity:	0.4274	GAPI/cps