



Microresistivity Log

DIGITAL LOG (785) 625-3858

API No. 15-065-23,528-00-00	Company American Warrior, Inc	Other Services CDL/CNL DIL
	Well Milfred No.1-33	Elevation K.B. 2302 D.F. 2294 G.L. 2294
	Field Cooper	
	County Graham	
	State Kansas	
	Location 335' FSL & 2300' FEL	
	Sec: 33 Twp: 9S Rge: 21W	
	Permanent Datum Gound level Elevation 2294	
	Log Measured From Kelly Bushing 8 Ft. Above Perm. Datum	
	Drilling Measured From Kelly Bushing	

Date	1/25/2009
Run Number	Two
Depth Driller	3945
Depth Logger	3946
Bottom Logged Interval	3945
Top Log Interval	3200
Casing Driller	8.625 @ 212
Casing Logger	208
Bit Size	7.875
Type Fluid in Hole	Chemical
Salinity, ppm CL	3000
Density / Viscosity	9.0 50
pH / Fluid Loss	9.5 9.0
Source of Sample	Flowline
Rm @ Meas. Temp	0.90 @ 44
Rmf @ Meas. Temp	0.68 @ 44
Rmc @ Meas. Temp	1.22 @ 44
Source of Rmf / Rmc	Charts
Rm @ BHT	0.34 @ 115
Operating Rig Time	3 1/2 Hours
Max Rec. Temp. F	115
Equipment Number	15
Location	Hays
Recorded By	T. Martin
Witnessed By	Ed Glassman

<<< Fold Here >>>

All interpretations are opinions based on inferences from electrical or other measurements and we cannot and do not guarantee the accuracy or correctness of any interpretation, and we shall not, except in the case of gross or willful negligence on our part, be liable or responsible for any loss, costs, damages, or expenses incurred or sustained by anyone resulting from any interpretation made by any of our officers, agents or employees. These interpretations are also subject to our general terms and conditions set out in our current Price Schedule.

Comments

Thank you for using Log-Tech, Inc.
(785) 625-3858

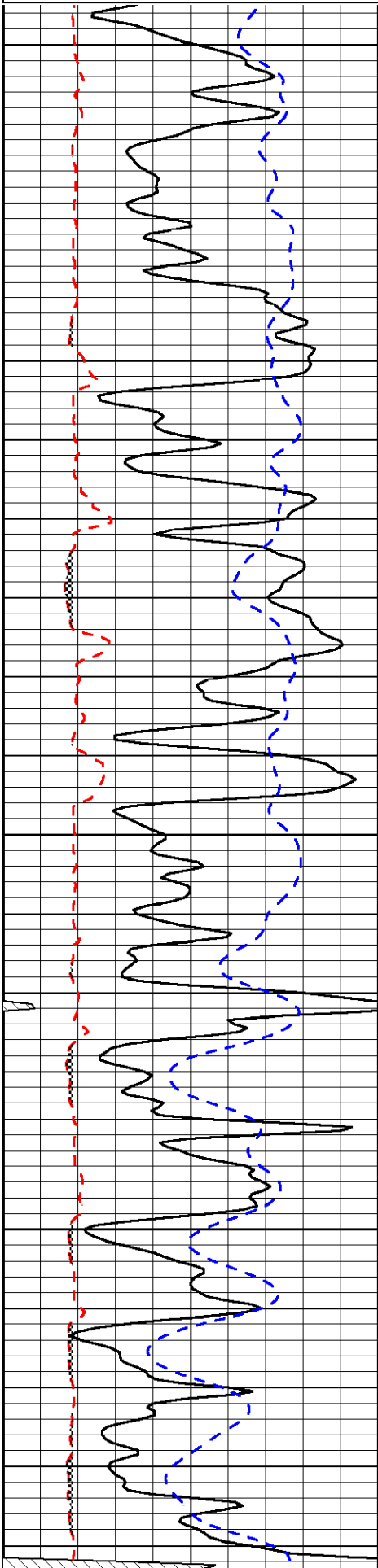
Palco, S to Y Rd, 5 1/2 W, N into

Database File: c:\warrior\data\amwar_milfred no.1-33\awhd.db
 Dataset Pathname: dil\awstc
 Presentation Format: micro
 Dataset Creation: Sun Jan 25 18:29:50 2009
 Charted by: Depth in Feet scaled 1:240

0	Gamma Ray	150
6	Micro Log Caliper (GAPI)	16
-200	SP	0

0	Micro Inverse 1 X 1	40
0	Micro Normal 2"	40
10000	Line Weight	0

LSPD

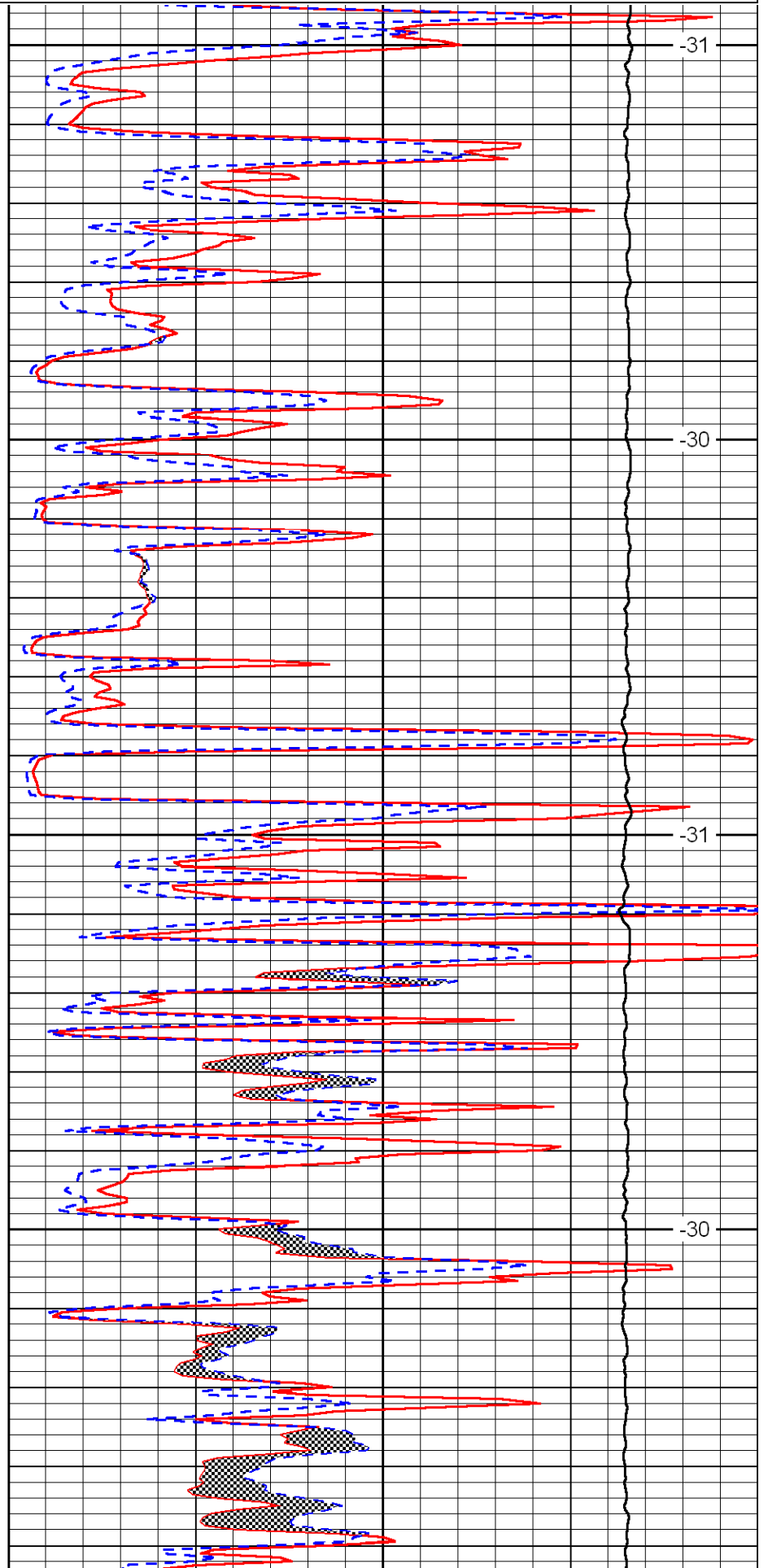


3200

3250

3300

3350

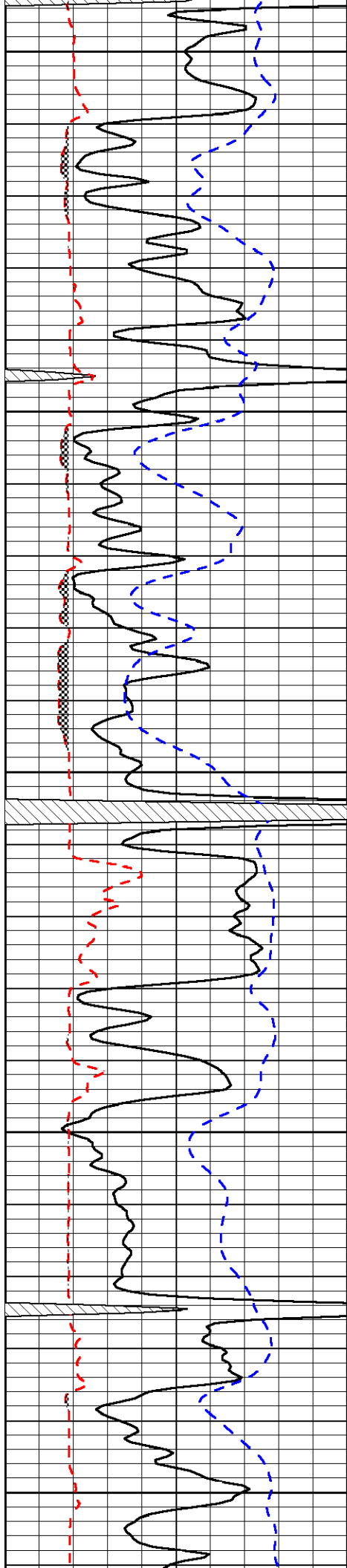


-31

-30

-31

-30



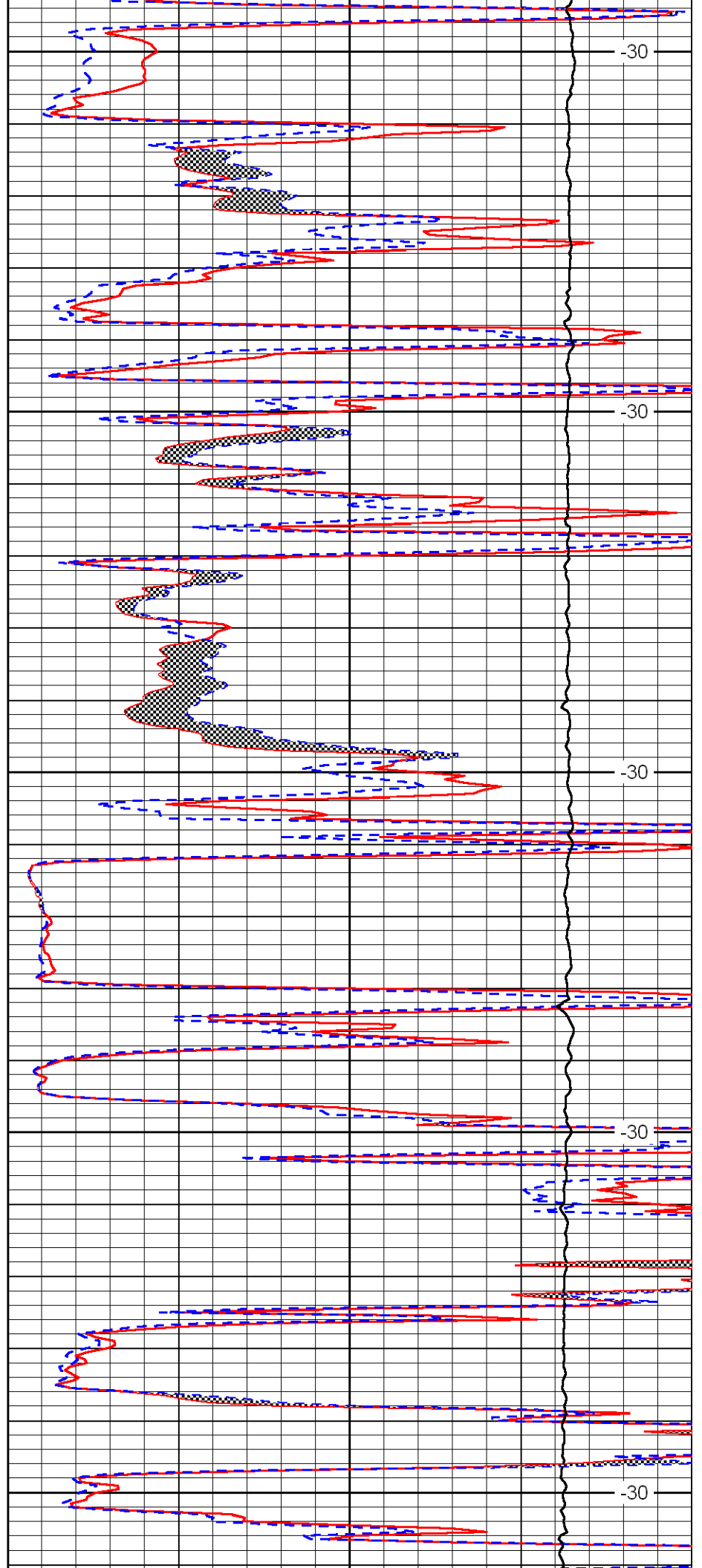
3400

3450

3500

3550

3600



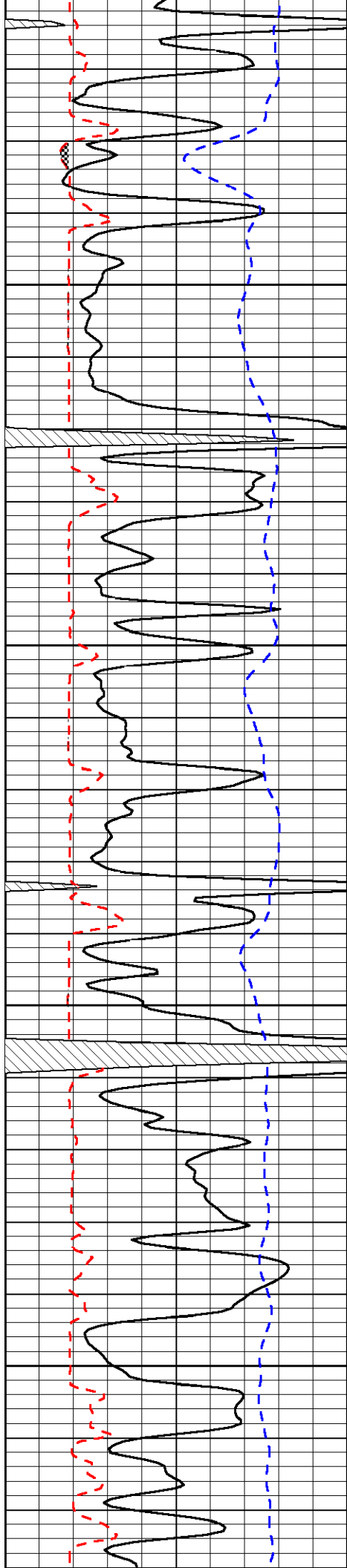
-30

-30

-30

-30

-30

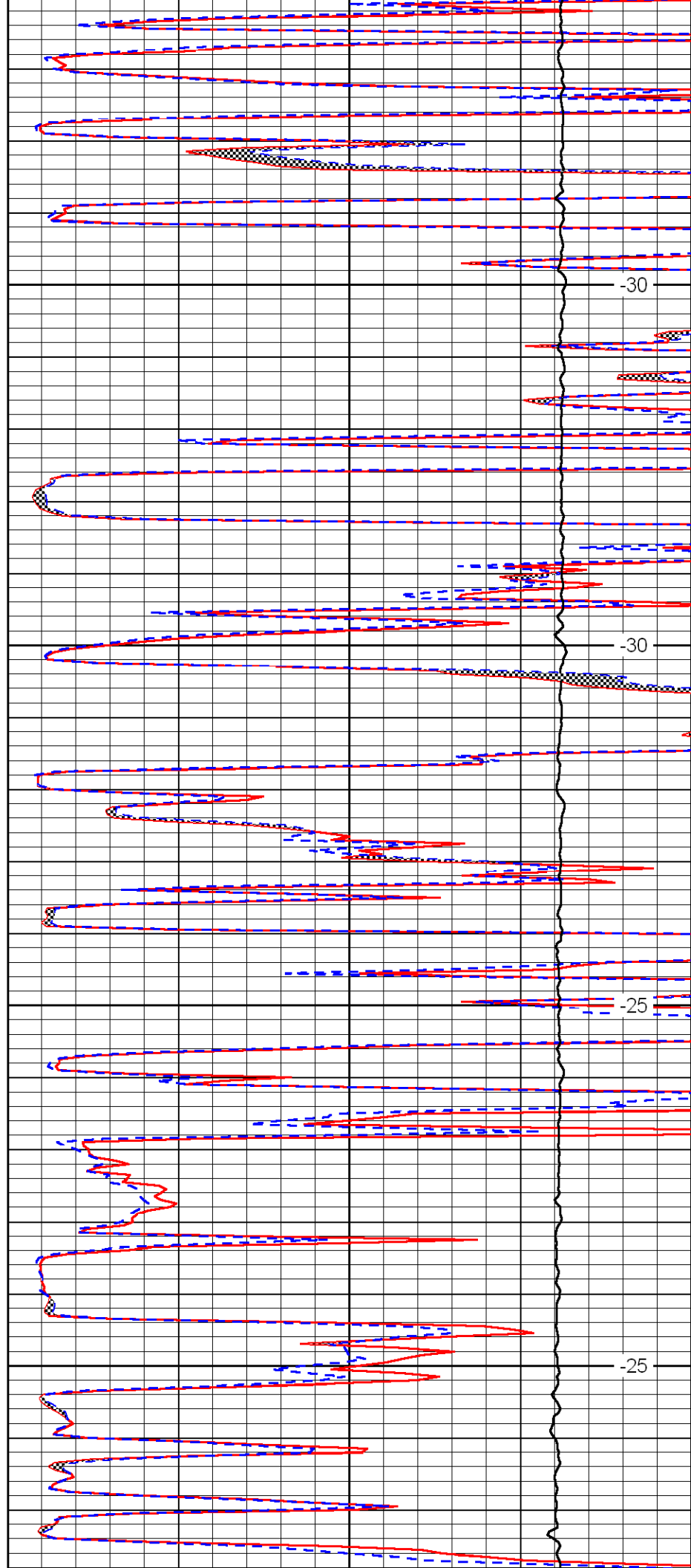


3650

3700

3750

3800

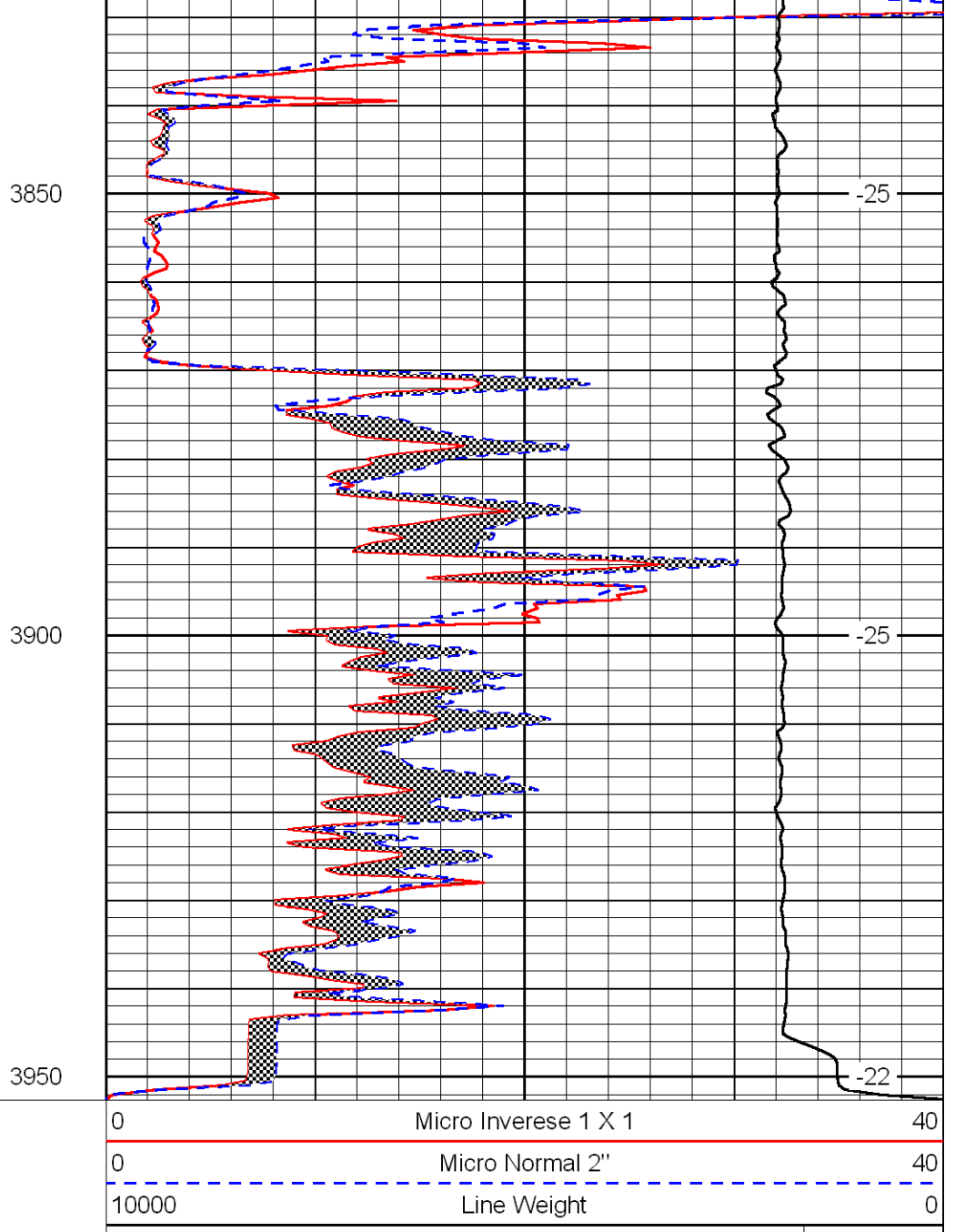
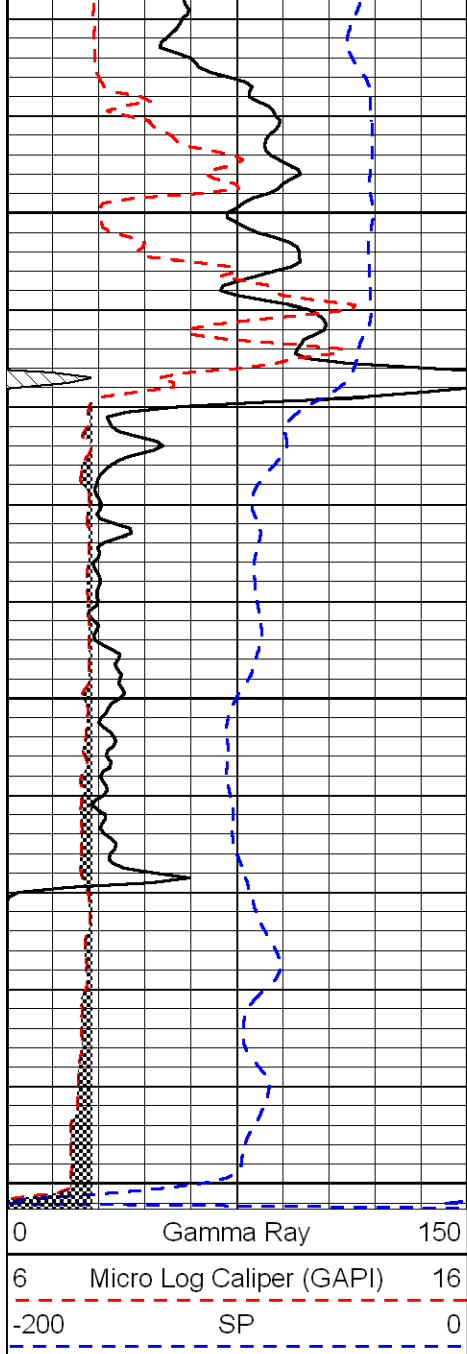


-30

-30

-25

-25



LSPD