



Dual Induction Log

DIGITAL LOG

(785) 625-3858

API No.	15-203-20,144-00-00	
Company	Raymond Oil Company, Inc	
Well	Eder No. 1	
Field	Wildcat	
County	Wichita	State Kansas
Location	SW - SW - SE 330' FSL & 2275' FEL	
Sec: 17	Twp: 20 S	Rge: 35 S
Other Services	CNL/CDL MEL	
Elevation	K.B. 3155 D.F. 3144 G.L. 3144	

Permanent Datum	Ground Level	Elevation 3144
Log Measured From	Kelly Bushing	11 Ft. Above Perm. Datum
Drilling Measured From	Kelly Bushing	
Date	11/2/2009	
Run Number	One	
Depth Driller	5050	
Depth Logger	5054	
Bottom Logged Interval	5053	
Top Log Interval	250	
Casing Driller	8.625 @ 267	
Casing Logger	266	
Bit Size	7.875	
Type Fluid in Hole	Chemical	
Salinity, ppm CL	6.000	
Density / Viscosity	9.2	54
pH / Fluid Loss	9.0	9.6
Source of Sample	Flowline	
Rm @ Meas. Temp	0.90 @ 55	
Rmf @ Meas. Temp	0.68 @ 55	
Rmc @ Meas. Temp	1.22 @ 55	
Source of Rmf / Rmc	Charts	
Rm @ BHT	0.39 @ 127	
Operating Rig Time	4 Hours	
Max Rec. Temp. F	127	
Equipment Number	15	
Location	Hays	
Recorded By	B. Becker	
Witnessed By	Max Lovely	

<<< Fold Here >>>

All interpretations are opinions based on inferences from electrical or other measurements and we cannot and do not guarantee the accuracy or correctness of any interpretation, and we shall not, except in the case of gross or willful negligence on our part, be liable or responsible for any loss, costs, damages, or expenses incurred or sustained by anyone resulting from any interpretation made by any of our officers, agents or employees. These interpretations are also subject to our general terms and conditions set out in our current Price Schedule.

Comments

Thank you for using Log-Tech, Inc.
(785) 625-3858

Marienthal, Ks; 1 East to Rd 20; 12 south;
South into location through farm yard

Database File: c:\warrior\data\raymond oil_eder no. 1\raymondhd.db
 Dataset Pathname: DIL\raystk
 Presentation Format: dil2in
 Dataset Creation: Fri Jan 02 11:07:01 2009
 Charted by: Depth in Feet scaled 1:600

0 Gamma Ray 150
-200 SP 0

0 Shallow Resistivity 50
0 Deep Resistivity 50

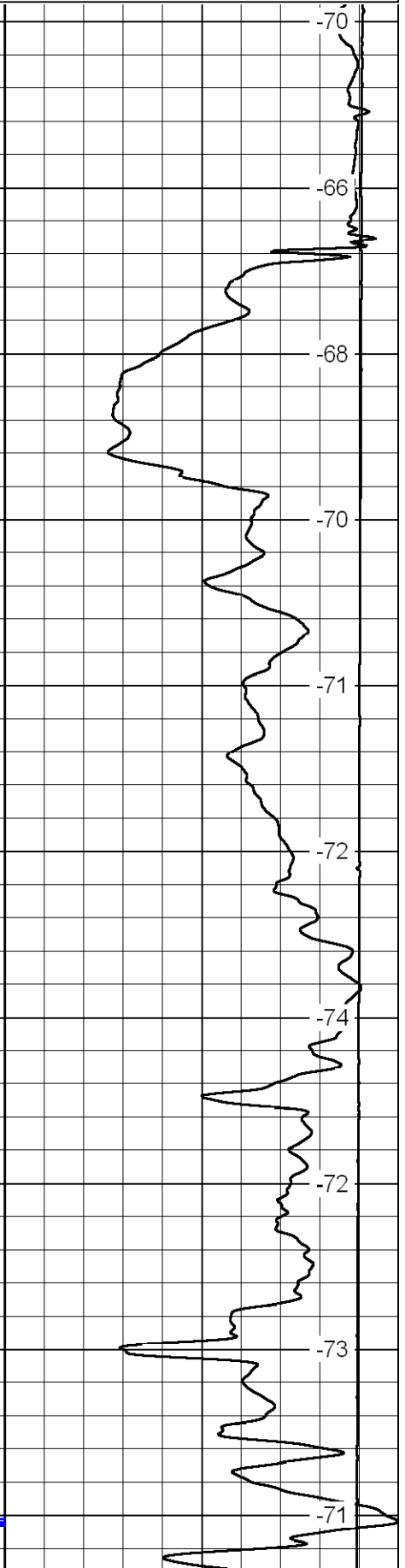
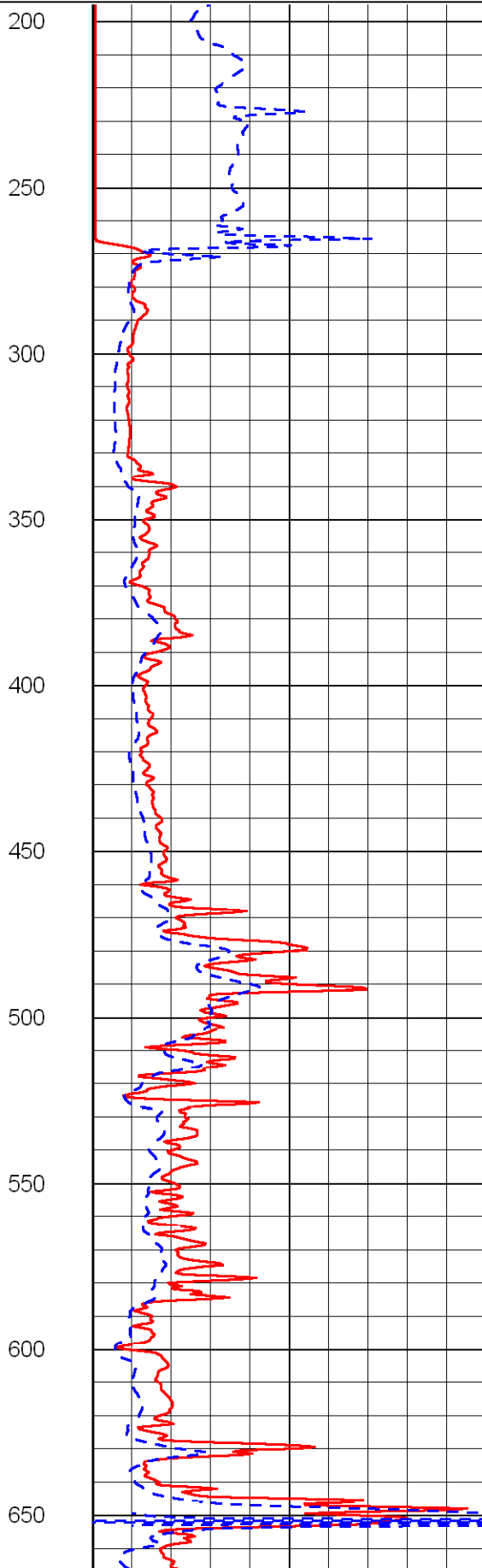
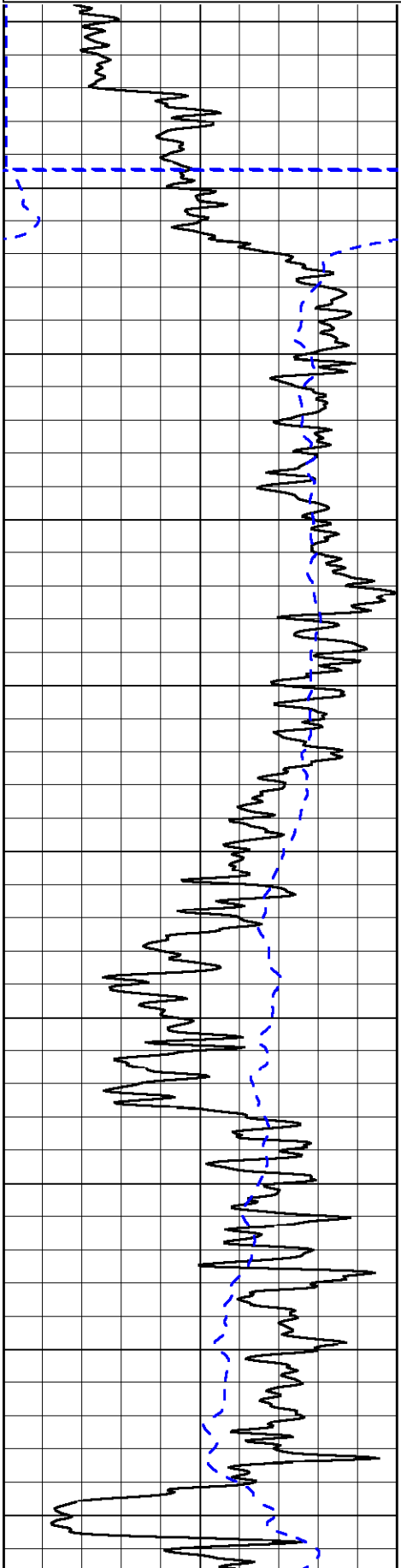
LSPD

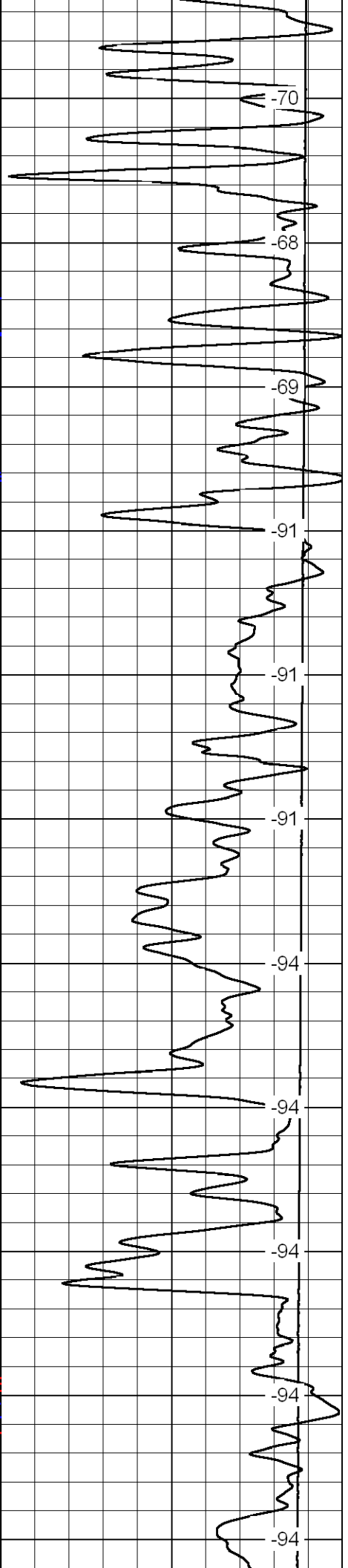
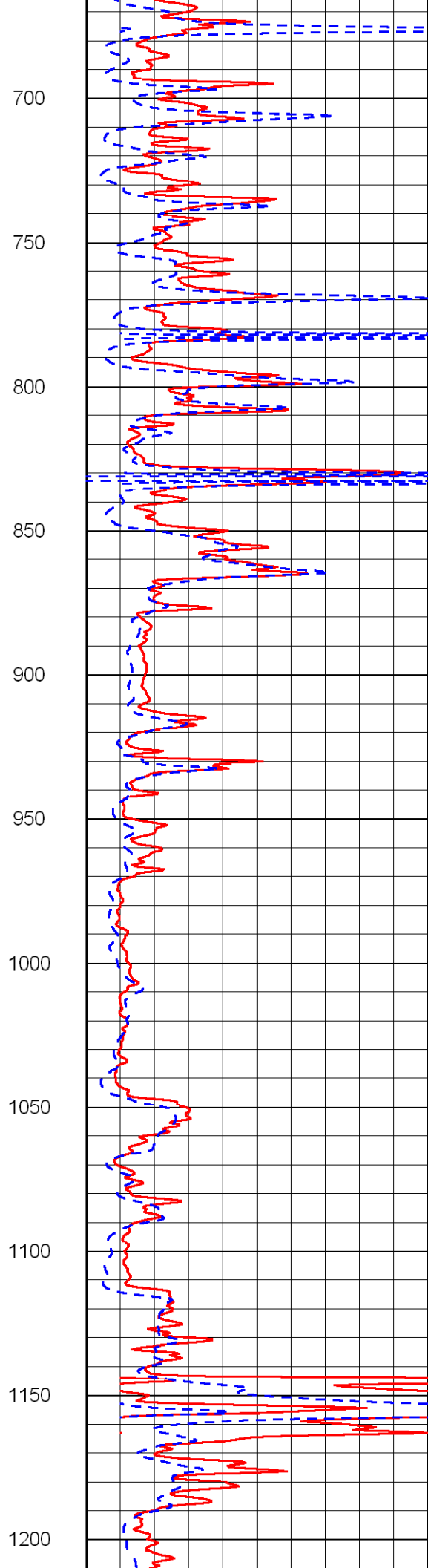
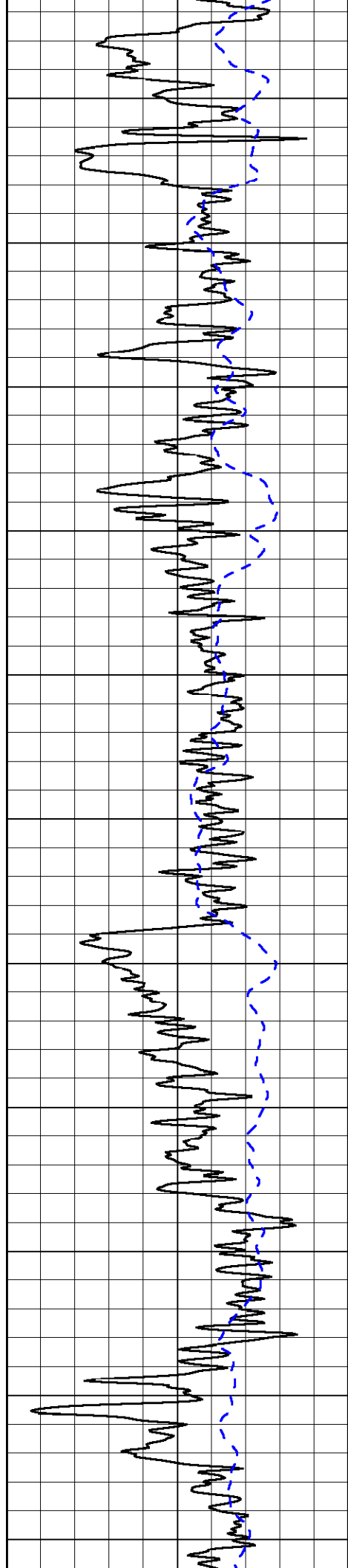
1000 Conductivity 0

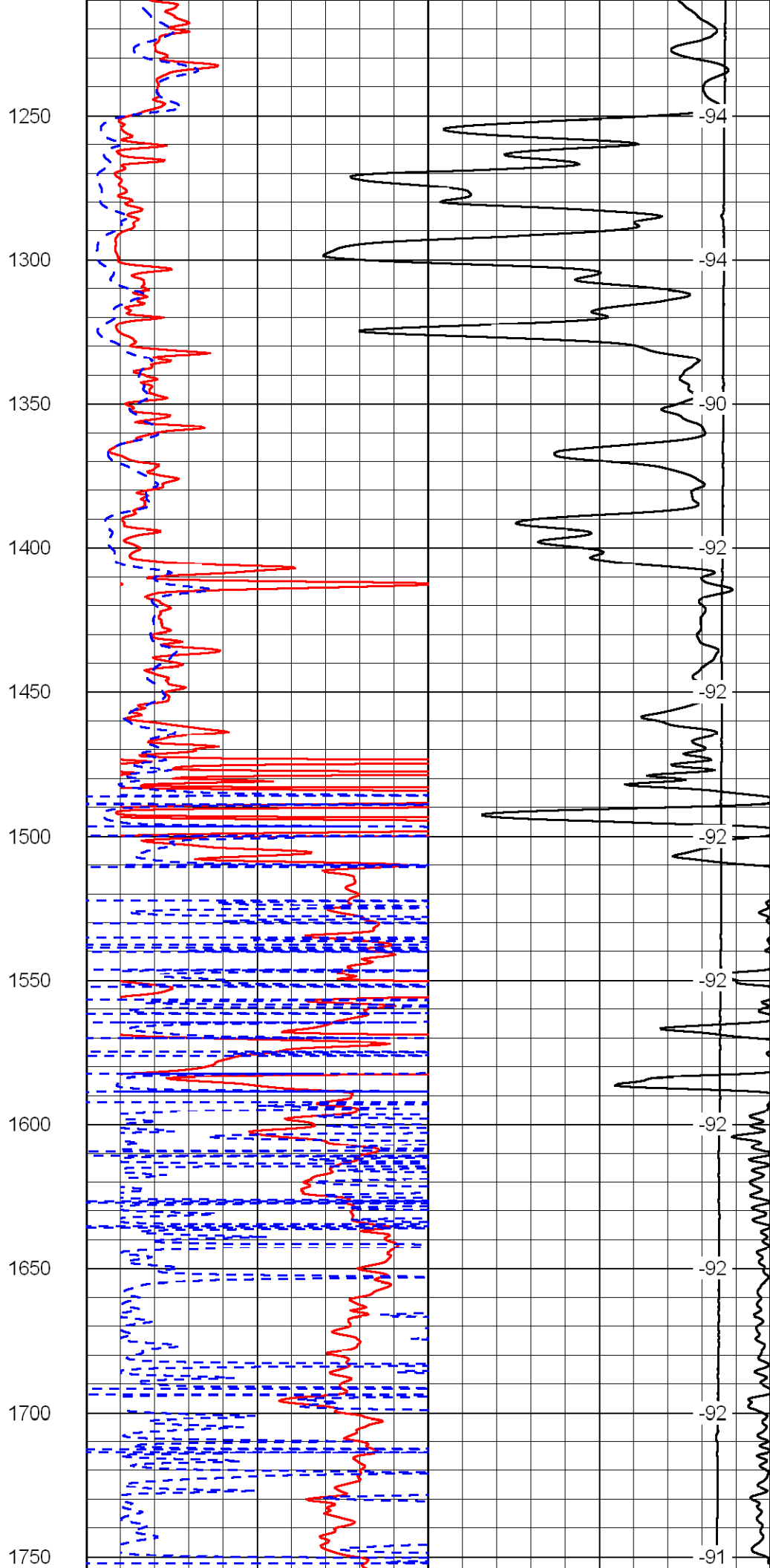
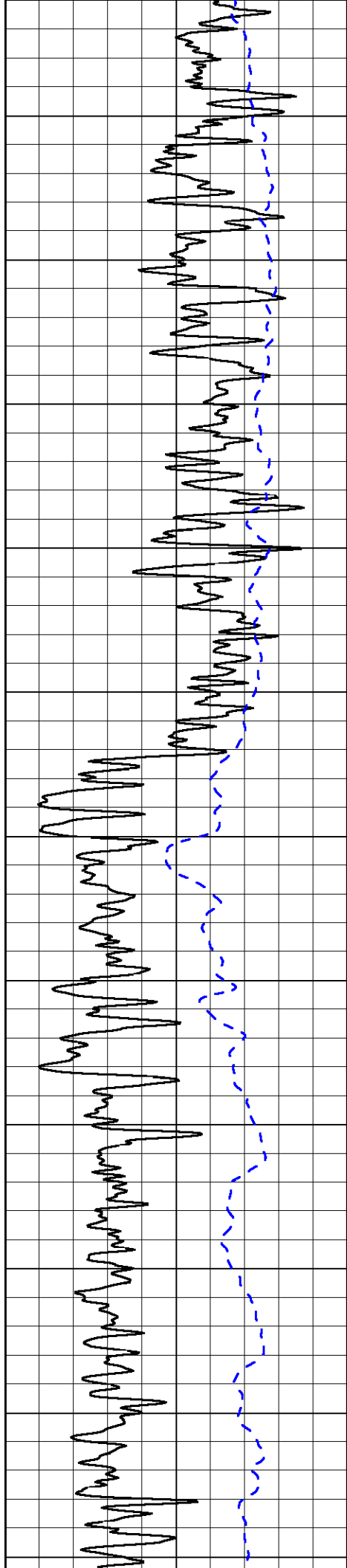
15000 Line Tension 0

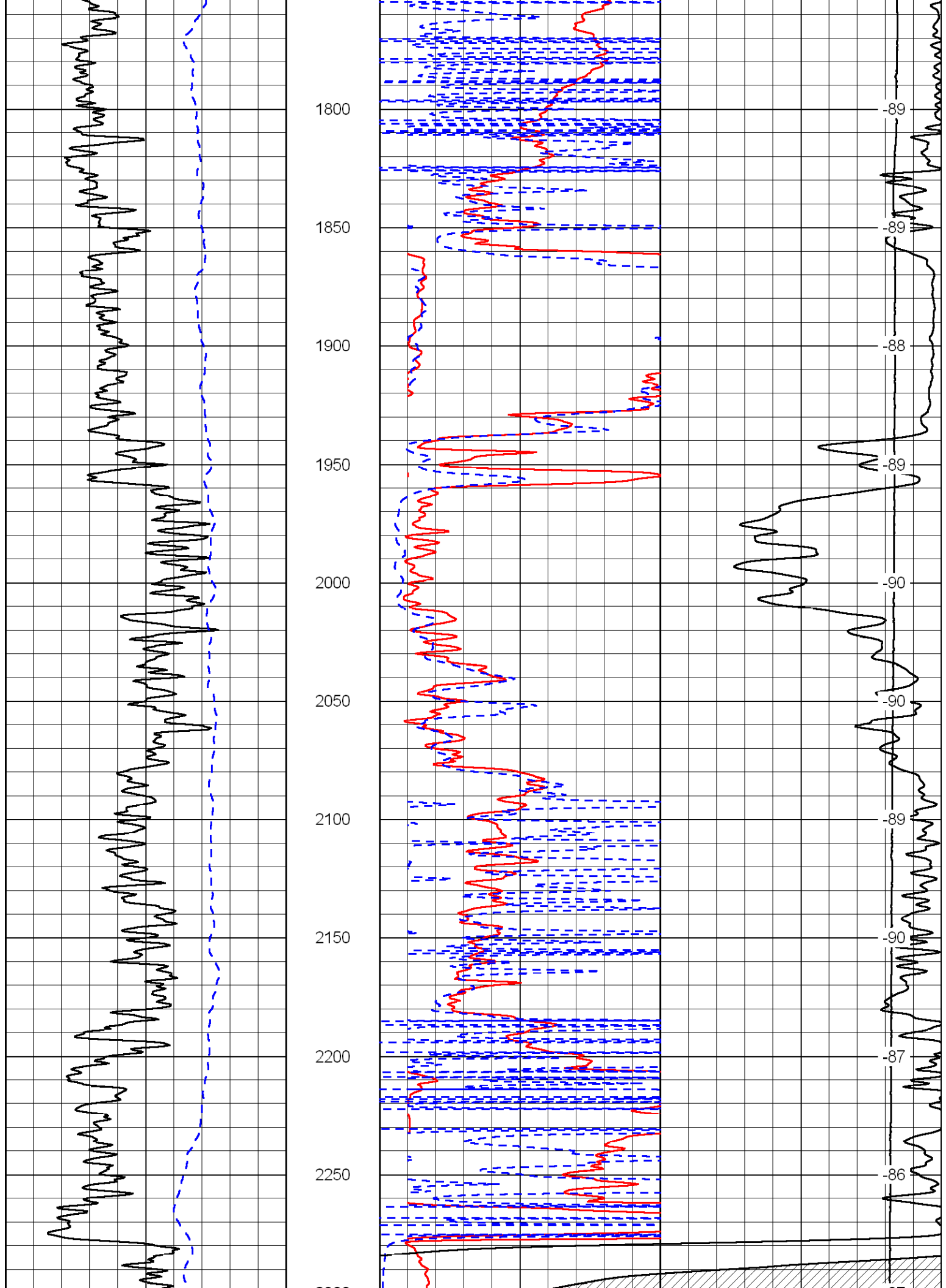
50 Shallow Resistivity 500

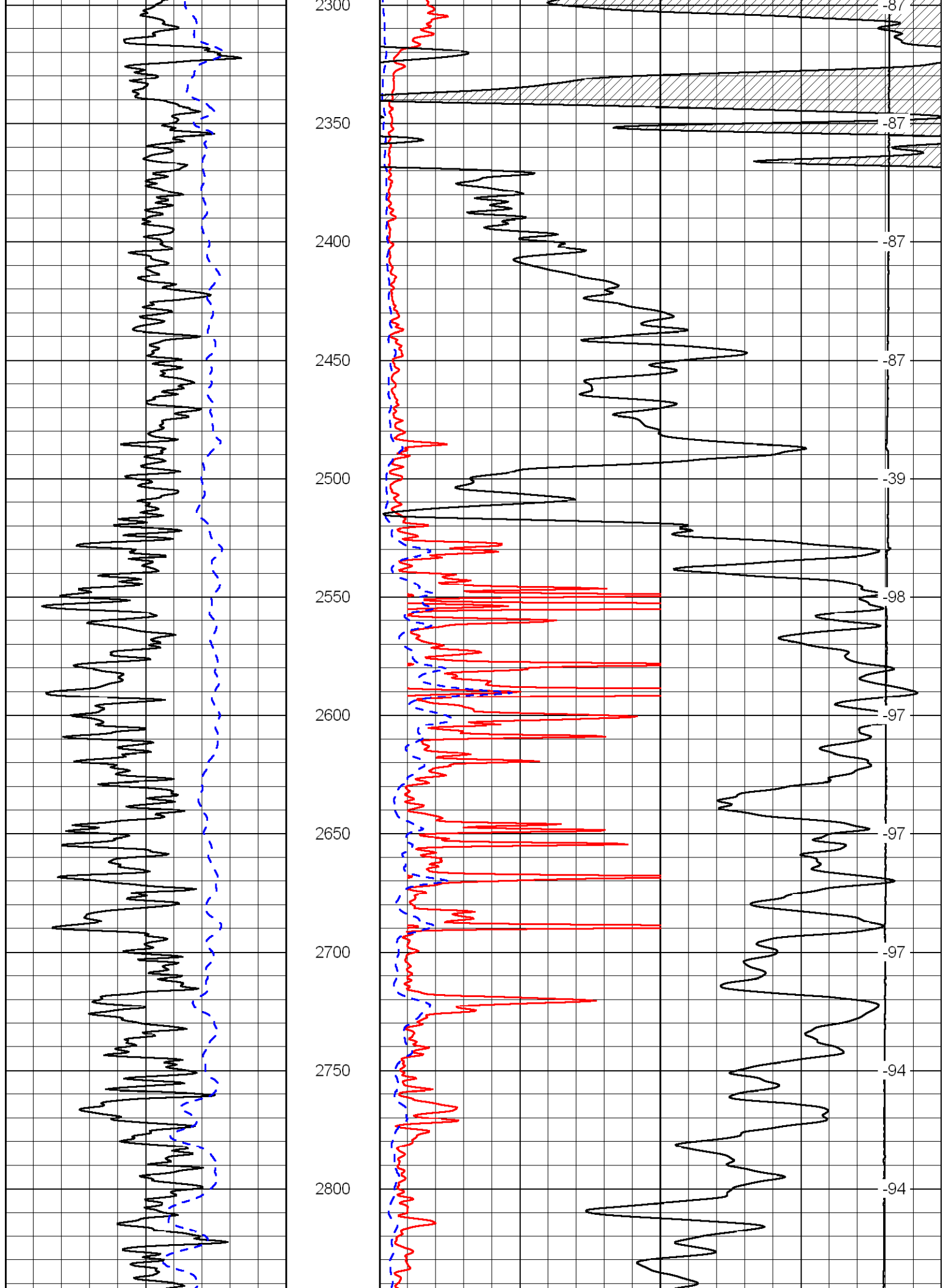
50 Deep Resistivity 500

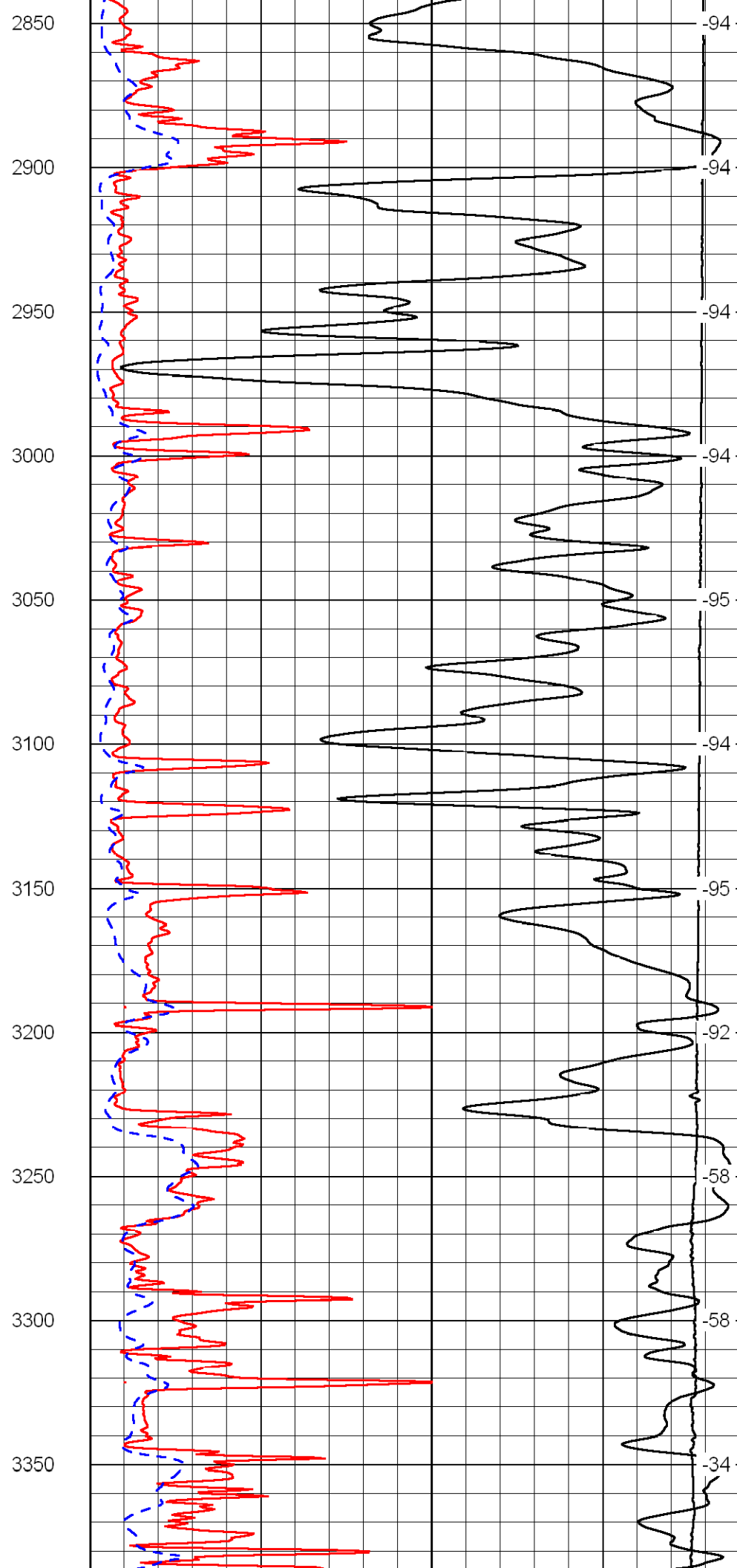
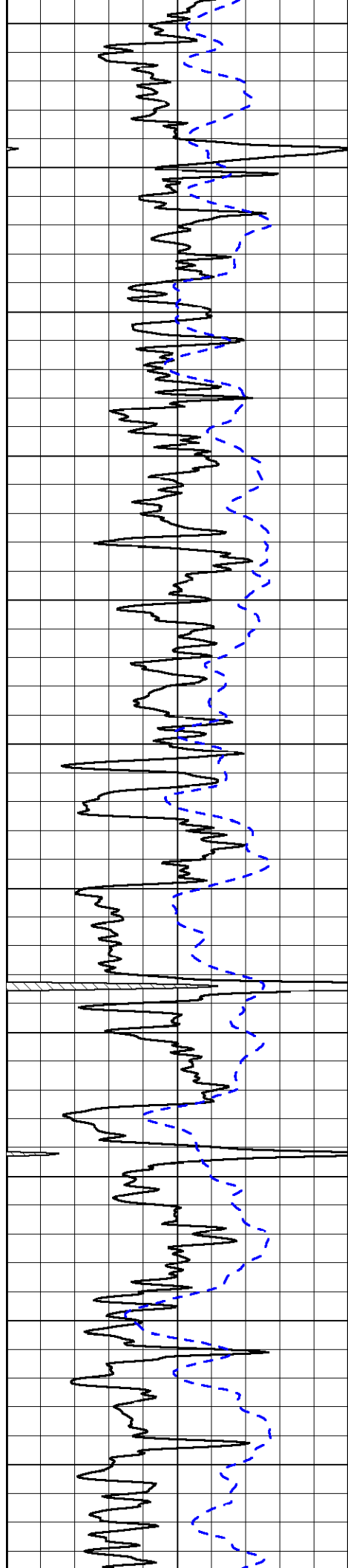


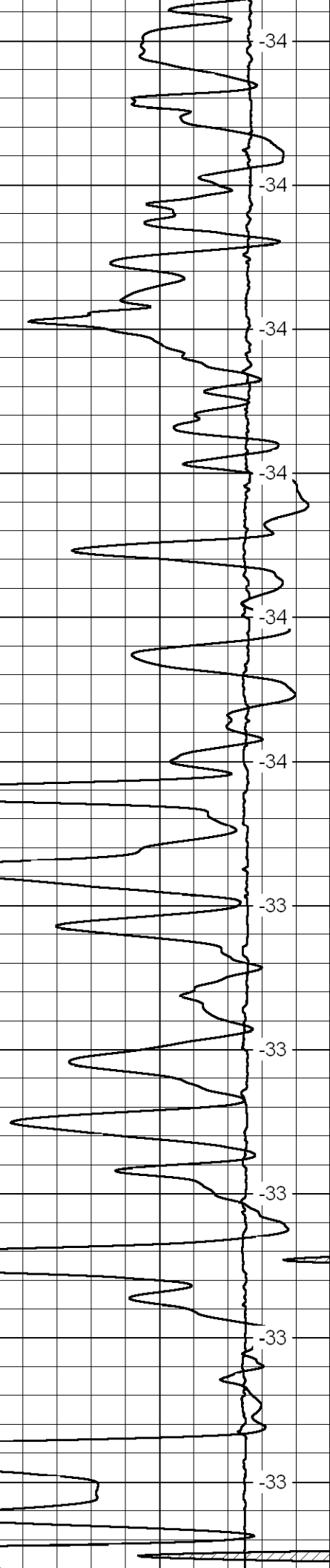
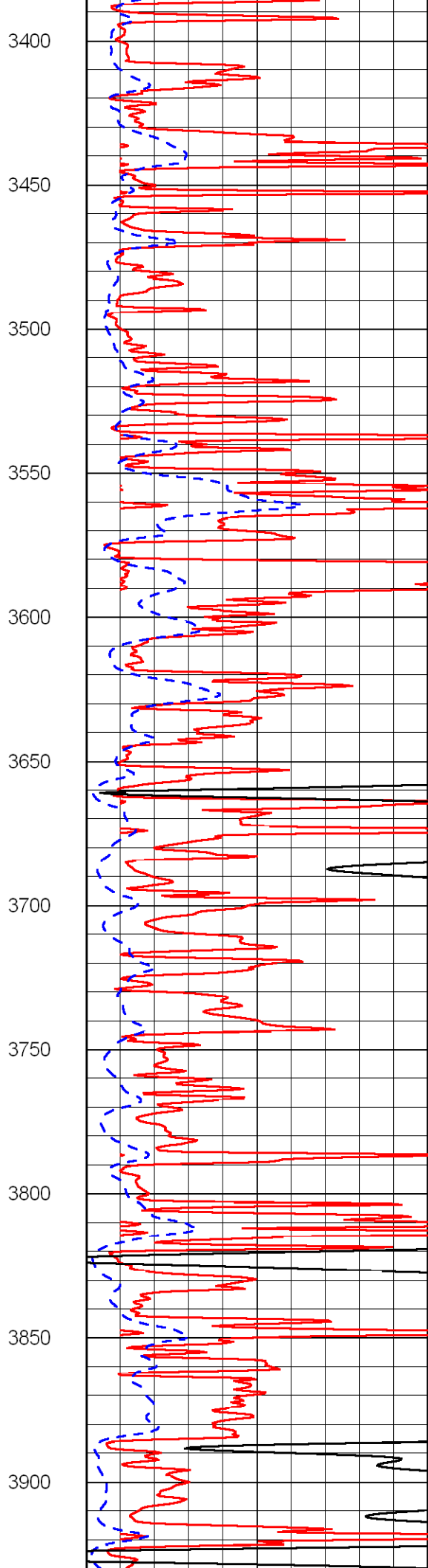
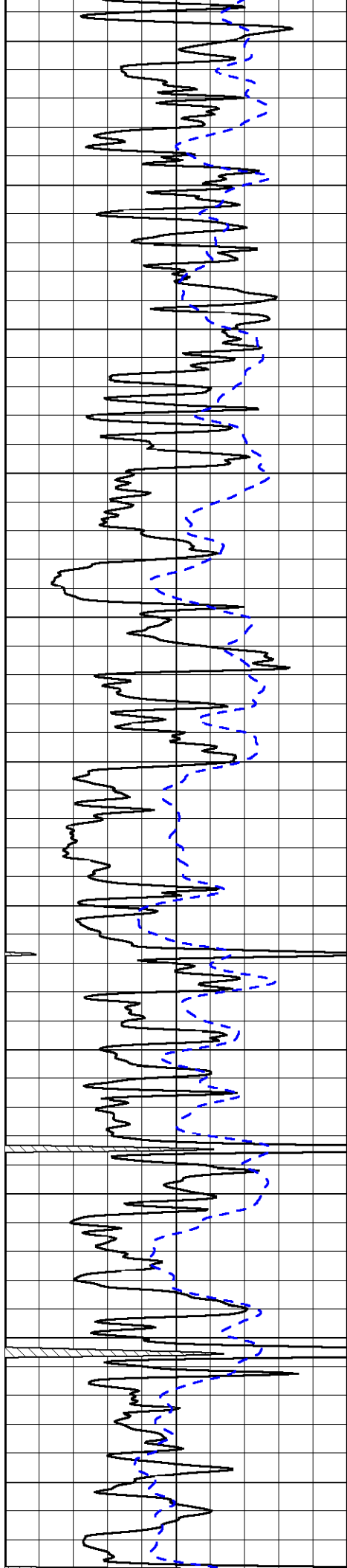


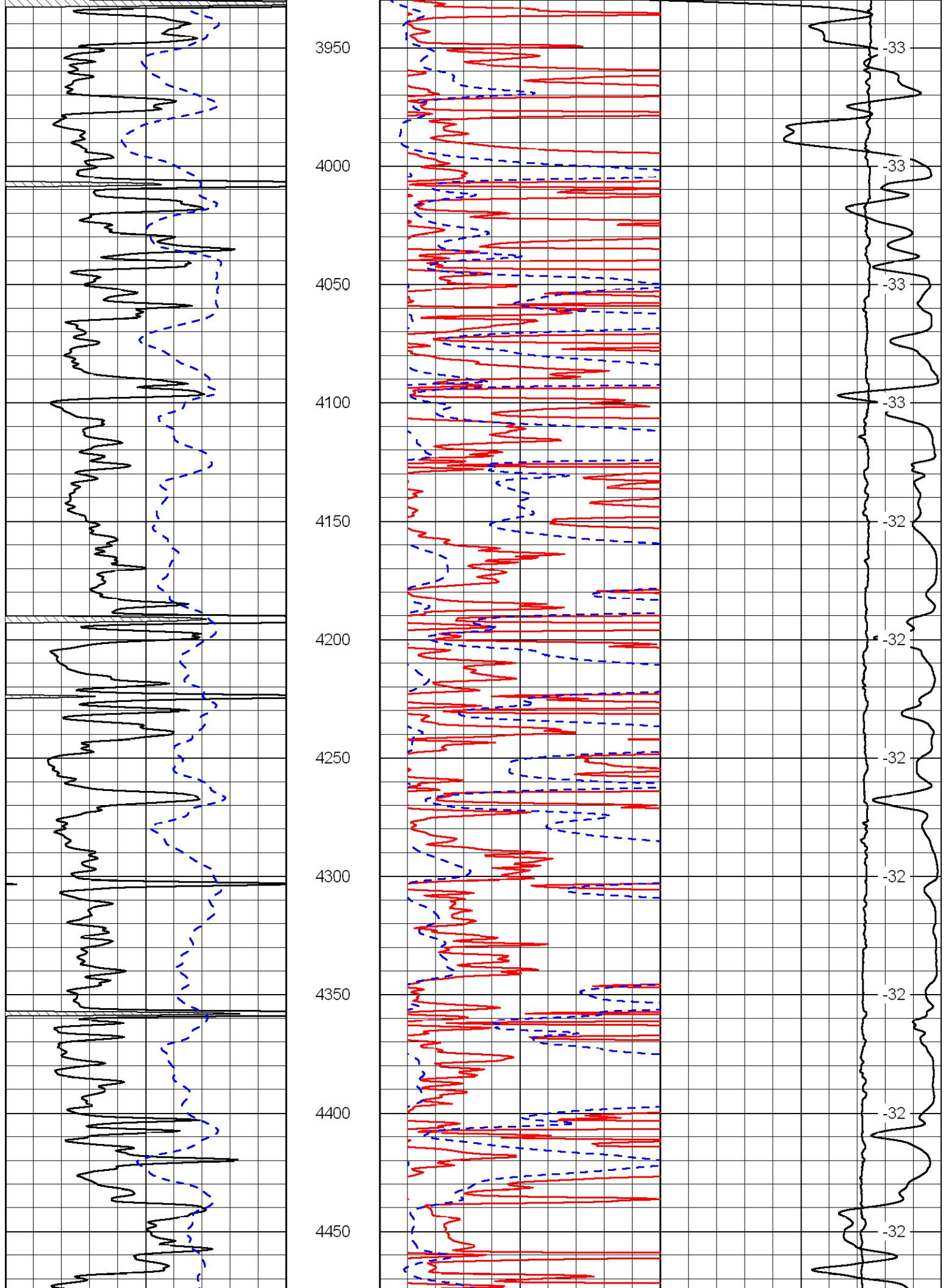


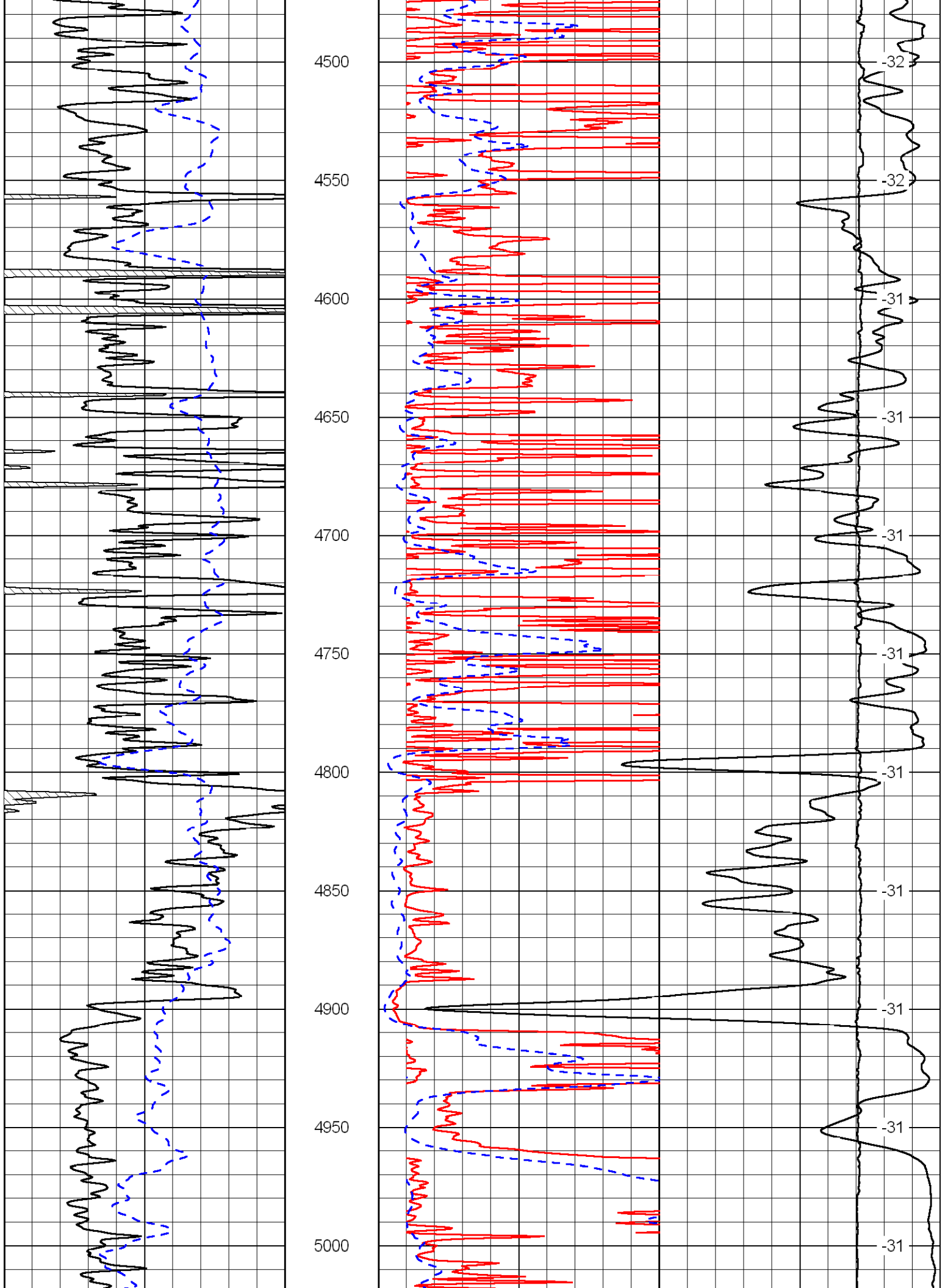


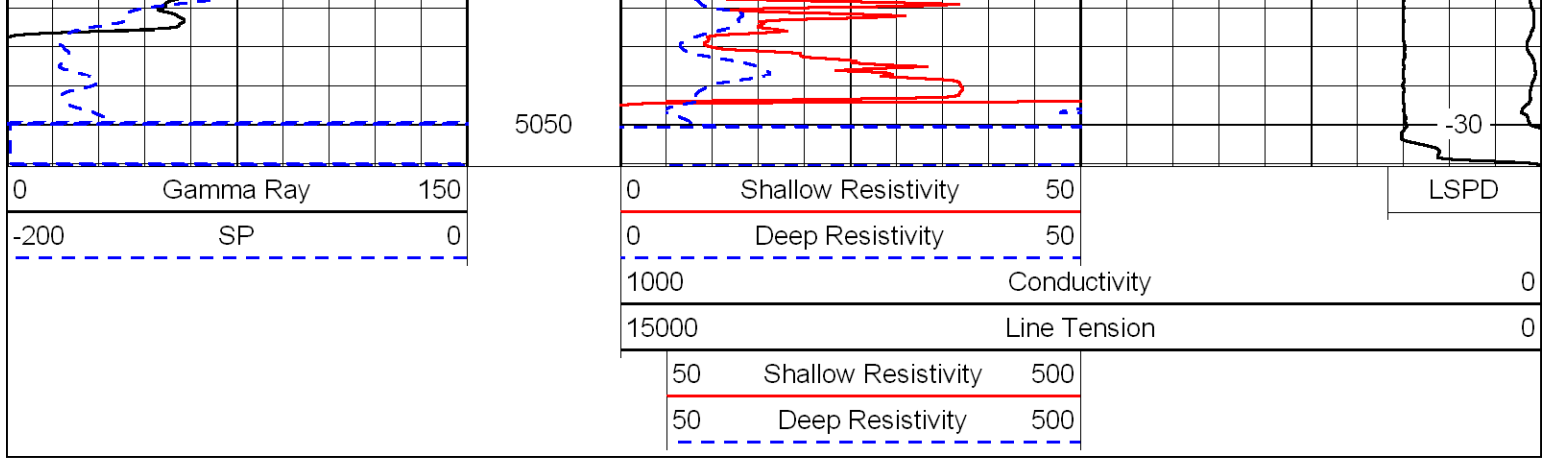




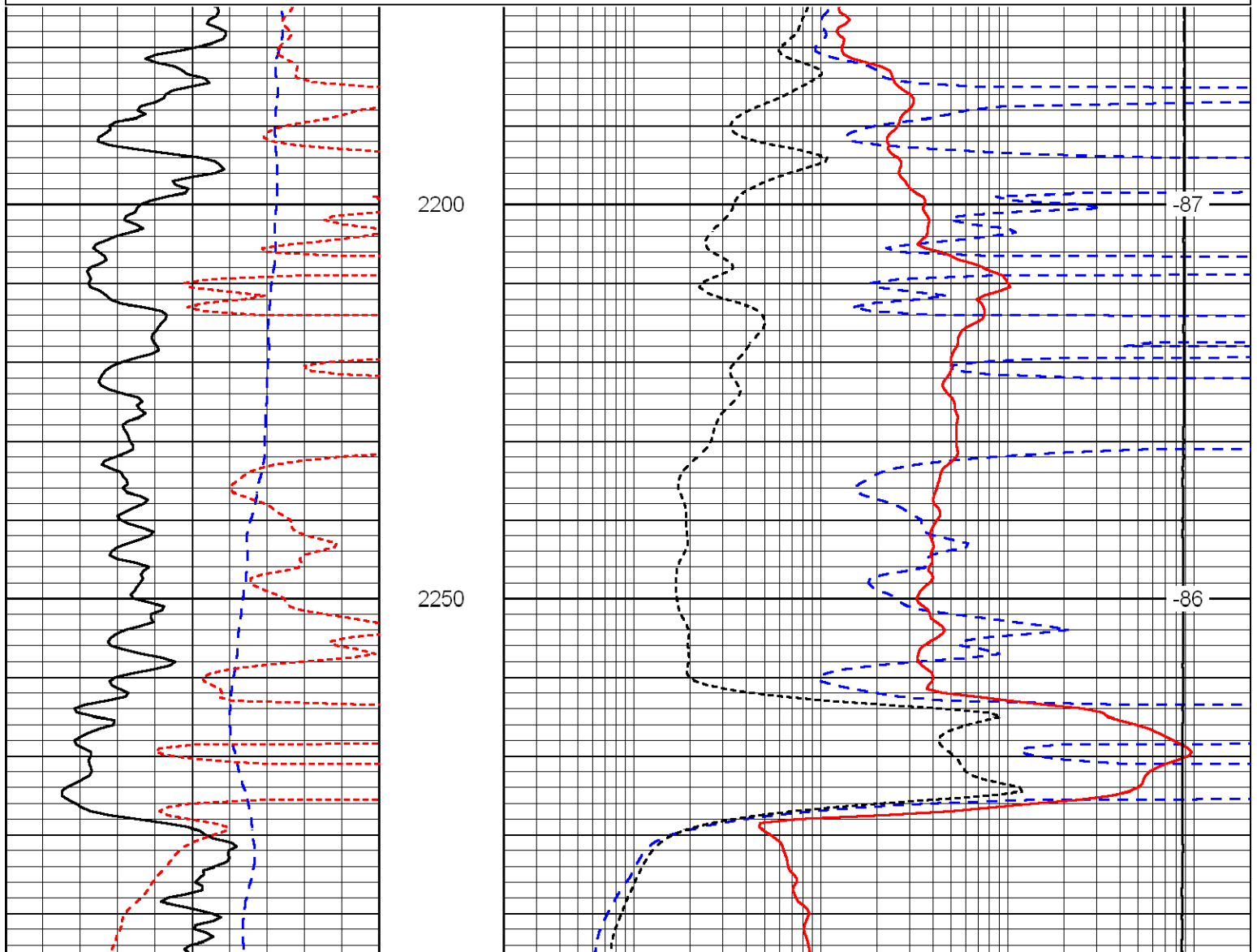
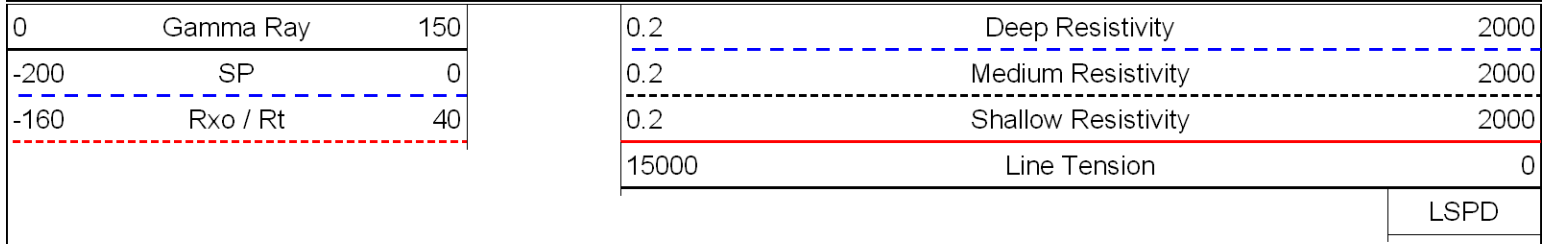


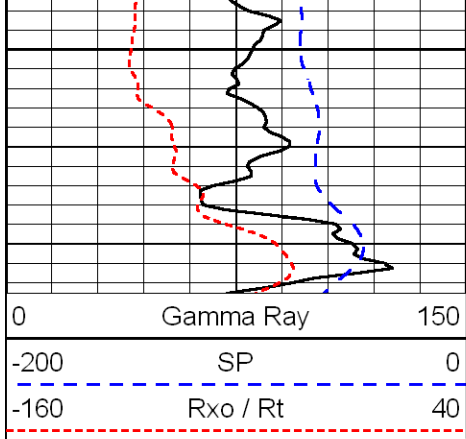




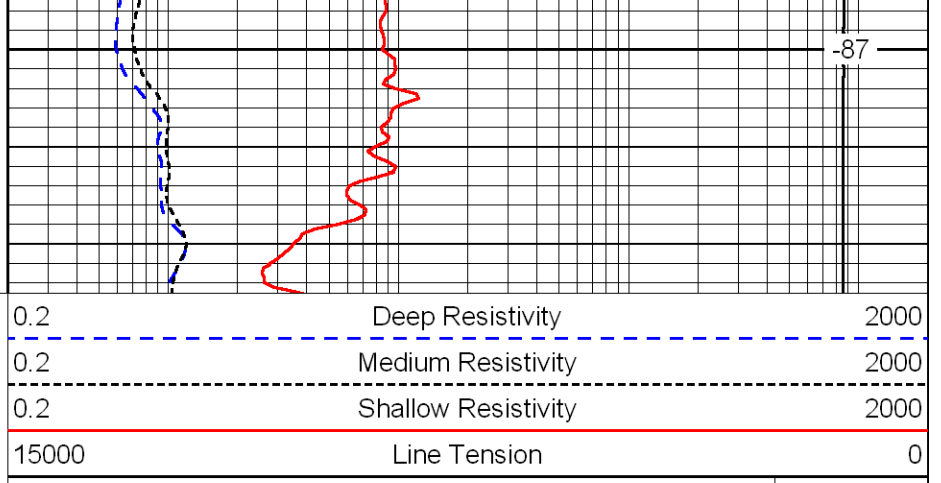


Database File: c:\warrior\data\raymond oil_eder no. 1\raymondhd.db
 Dataset Pathname: DIL/raystk
 Presentation Format: dil
 Dataset Creation: Fri Jan 02 11:07:01 2009
 Charted by: Depth in Feet scaled 1:240





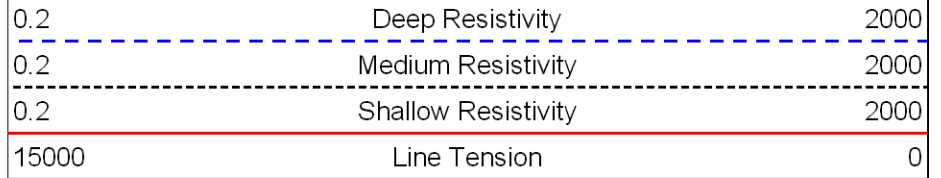
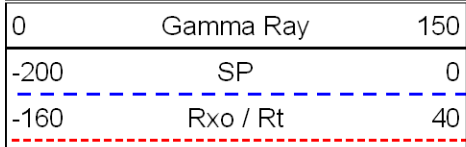
2300



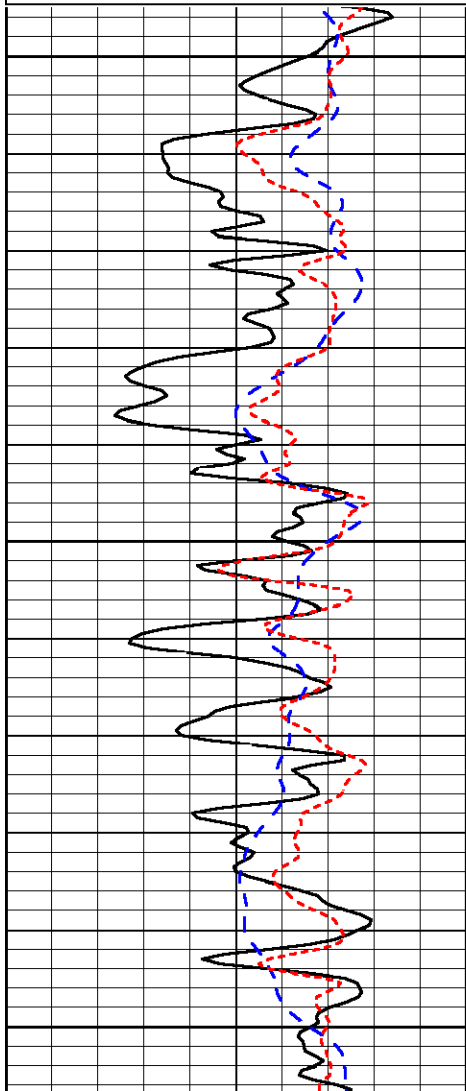
-87

LSPD

Database File: c:\warrior\data\raymond oil_eder no. 1\raymondhd.db
 Dataset Pathname: DIL/raystk
 Presentation Format: dil
 Dataset Creation: Fri Jan 02 11:07:01 2009
 Charted by: Depth in Feet scaled 1:240



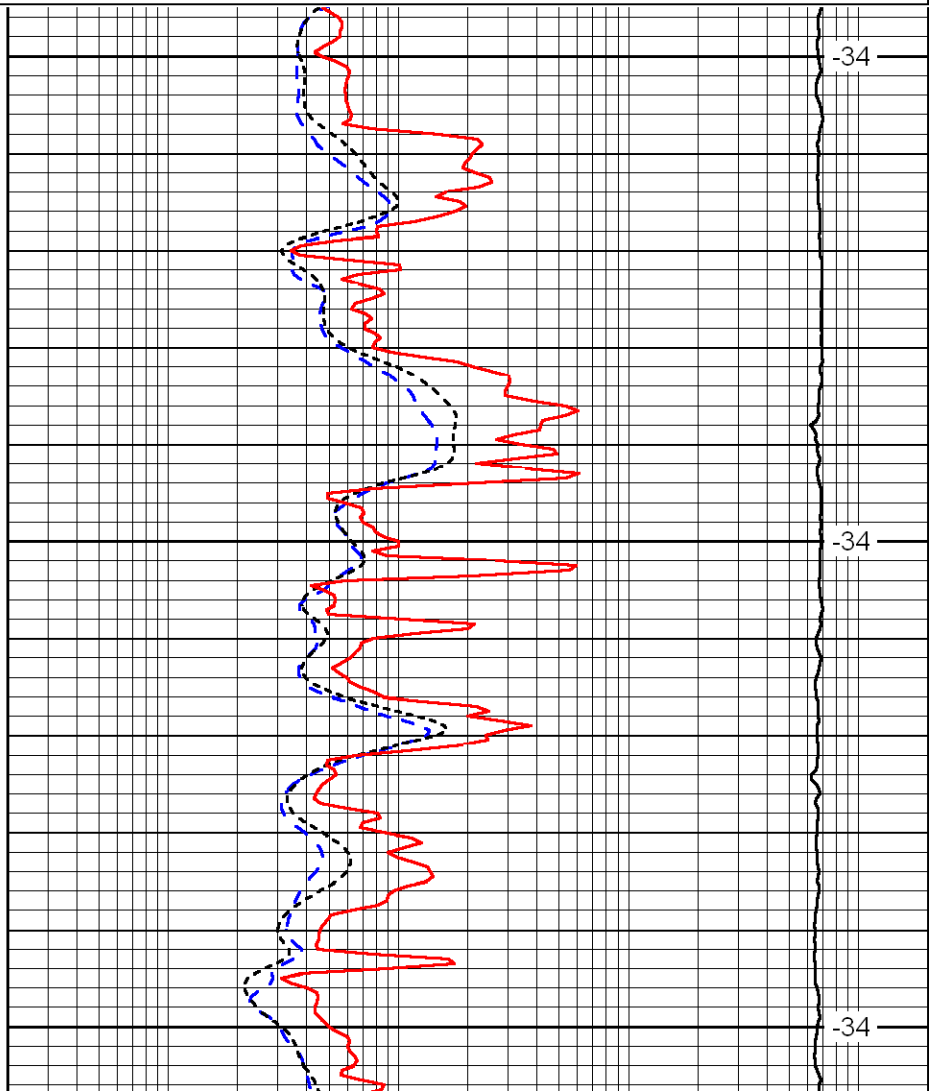
LSPD



3400

3450

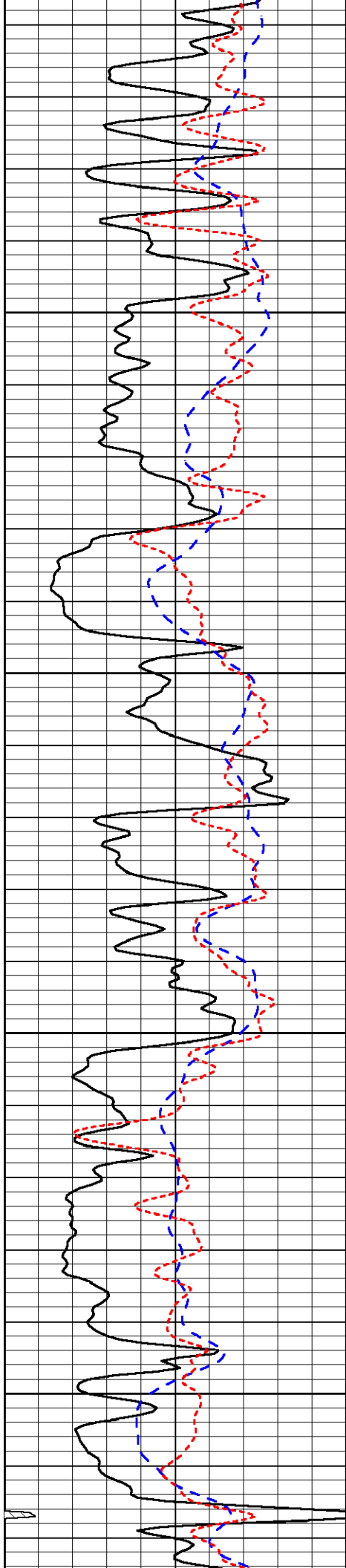
3500



-34

-34

-34

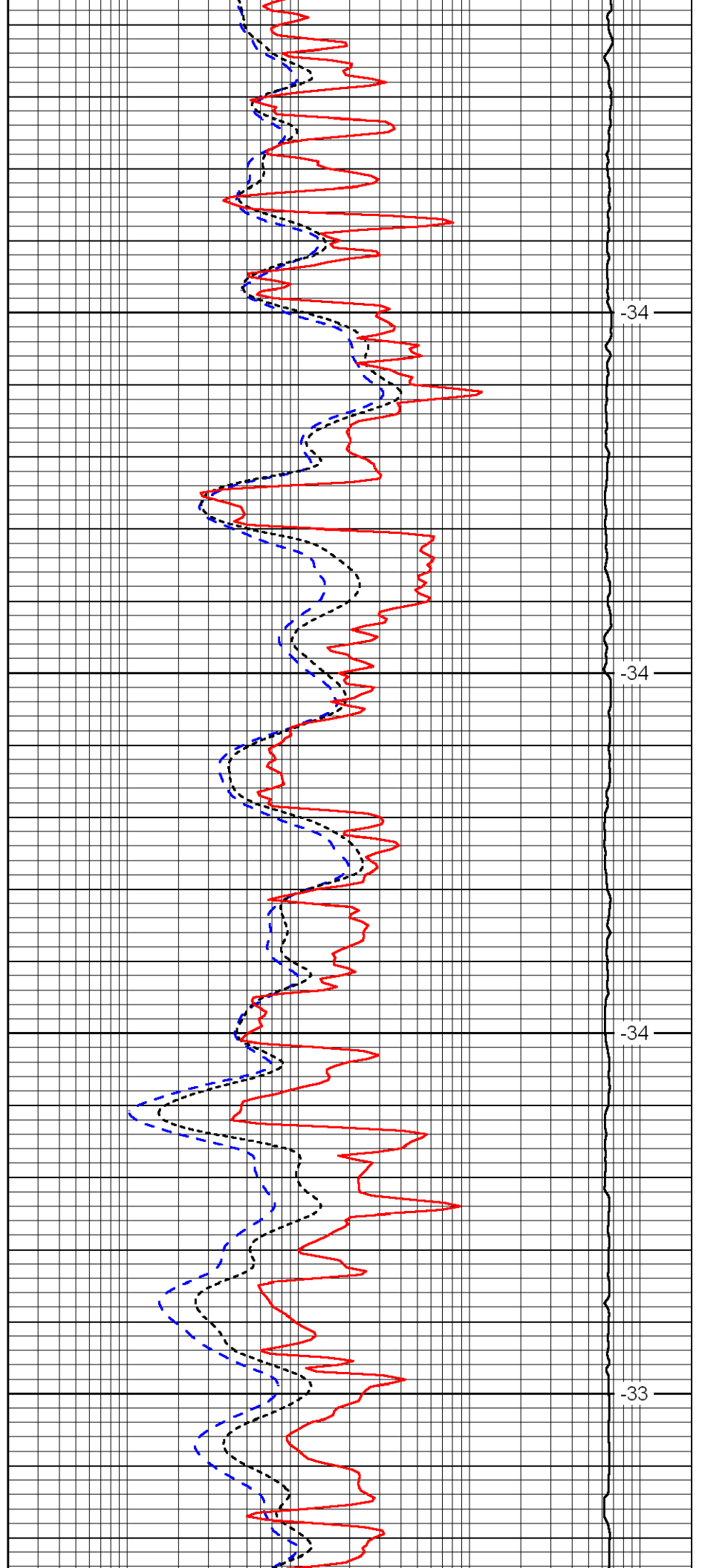


3550

3600

3650

3700

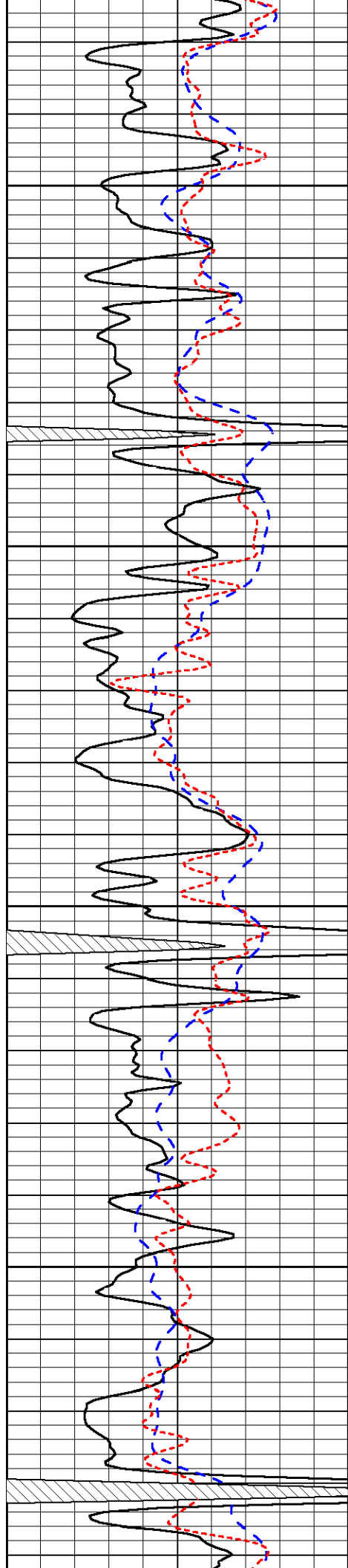


-34

-34

-34

-33

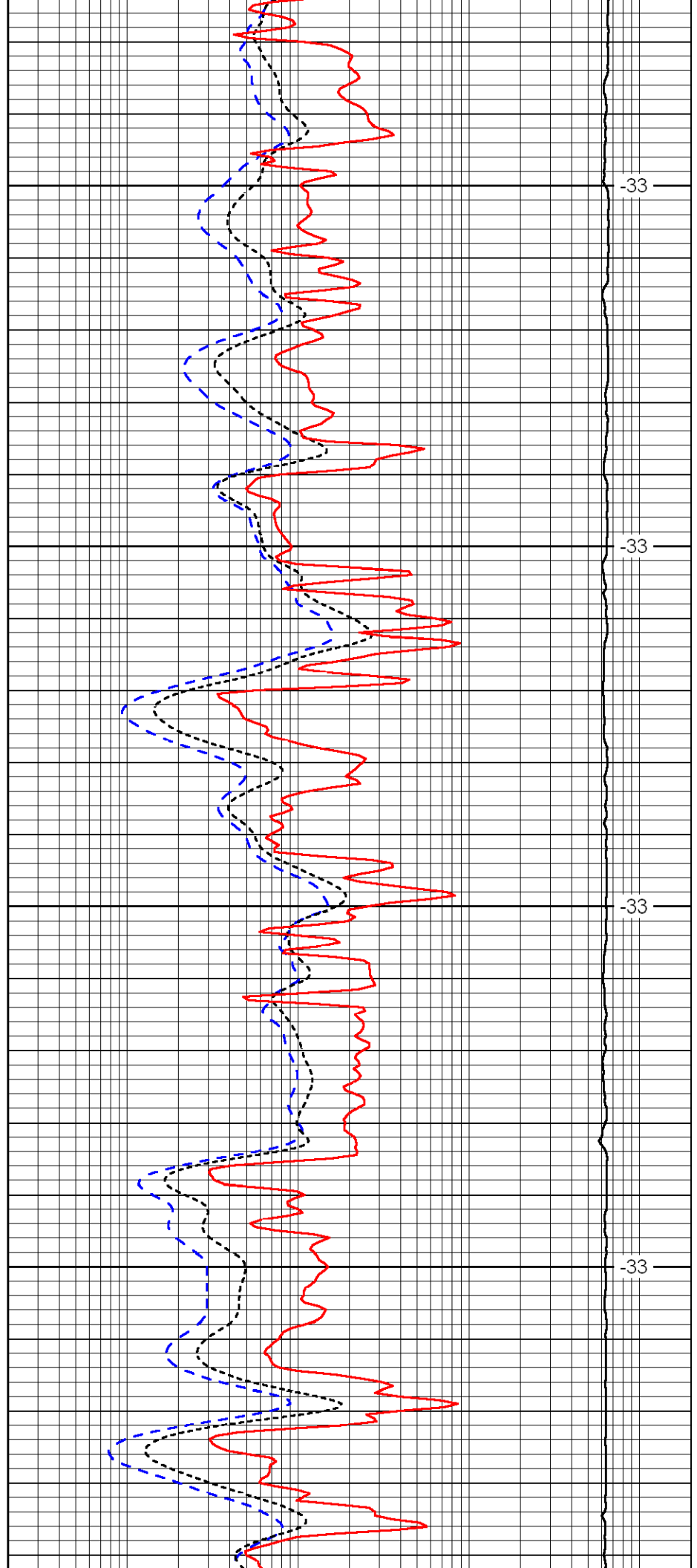


3750

3800

3850

3900

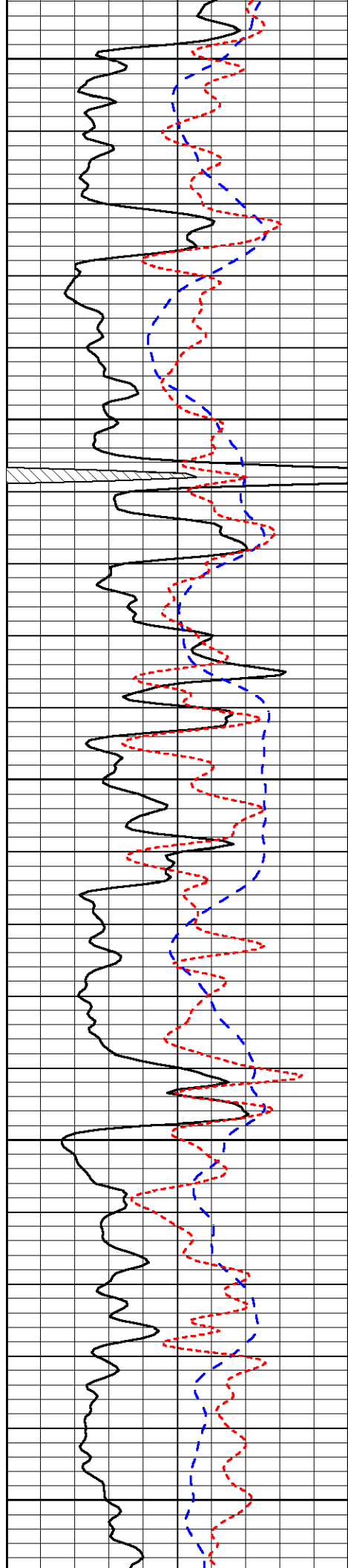


-33

-33

-33

-33



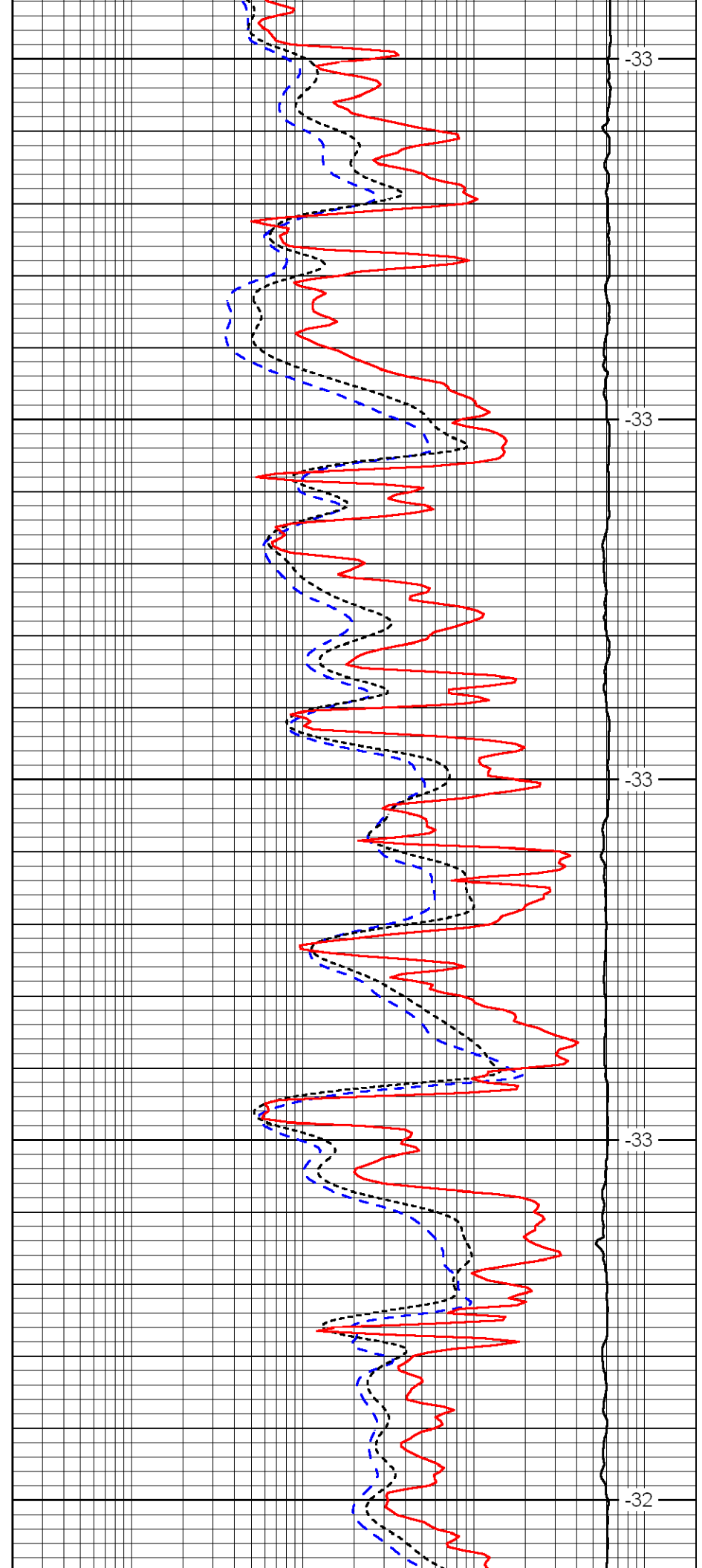
3950

4000

4050

4100

4150



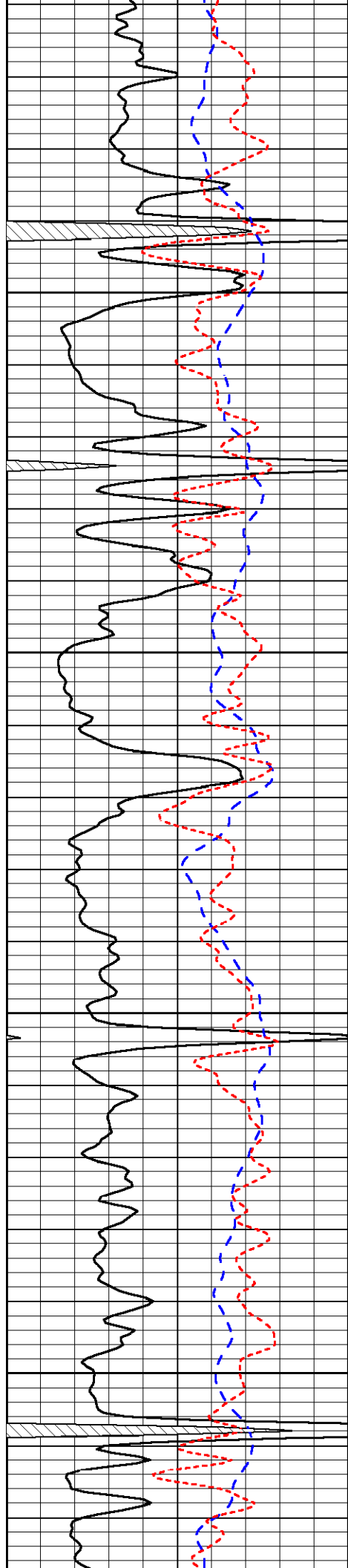
-33

-33

-33

-33

-32

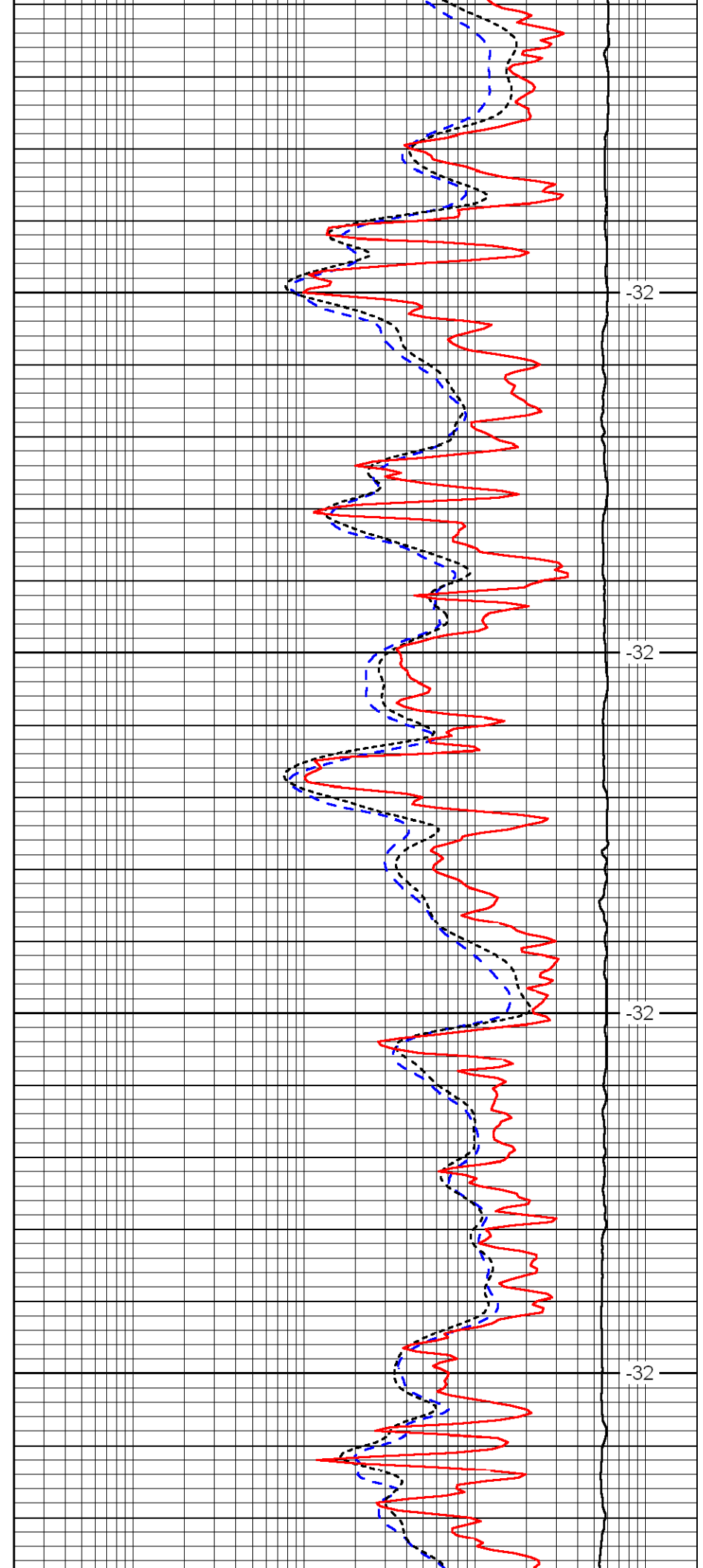


4200

4250

4300

4350

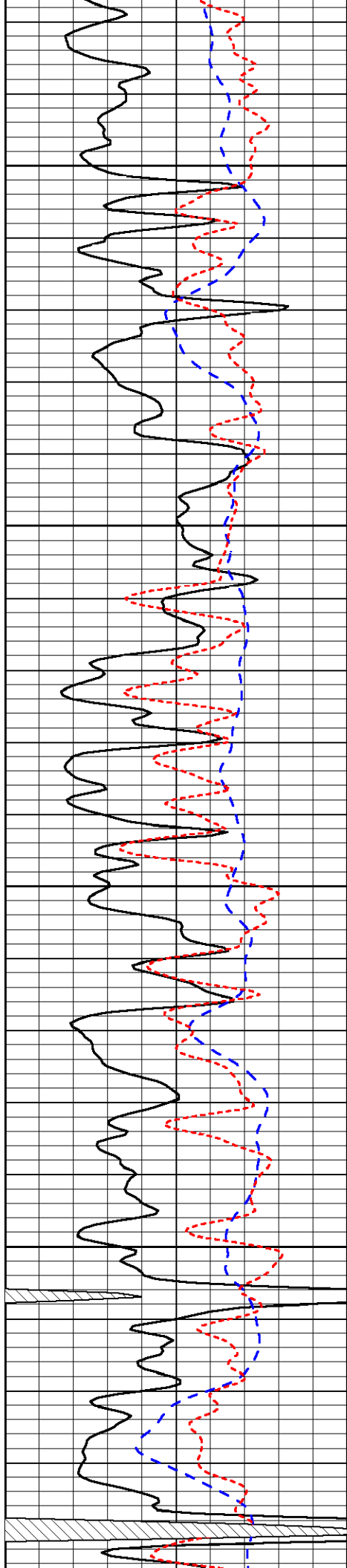


-32

-32

-32

-32

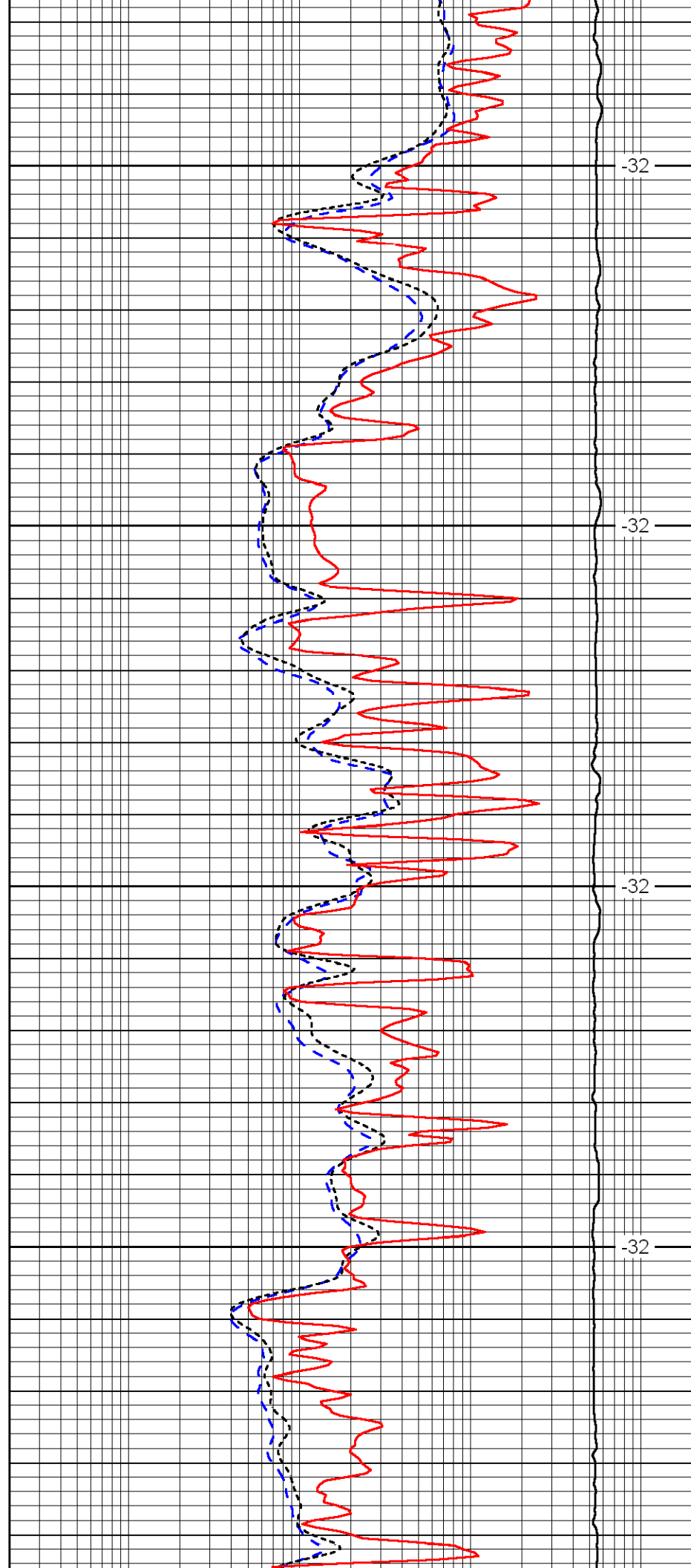


4400

4450

4500

4550

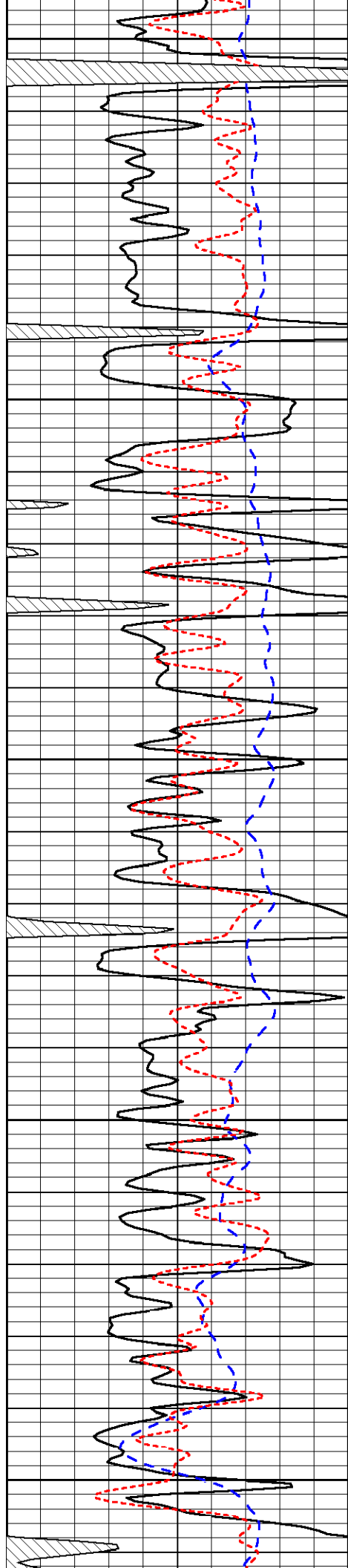


-32

-32

-32

-32



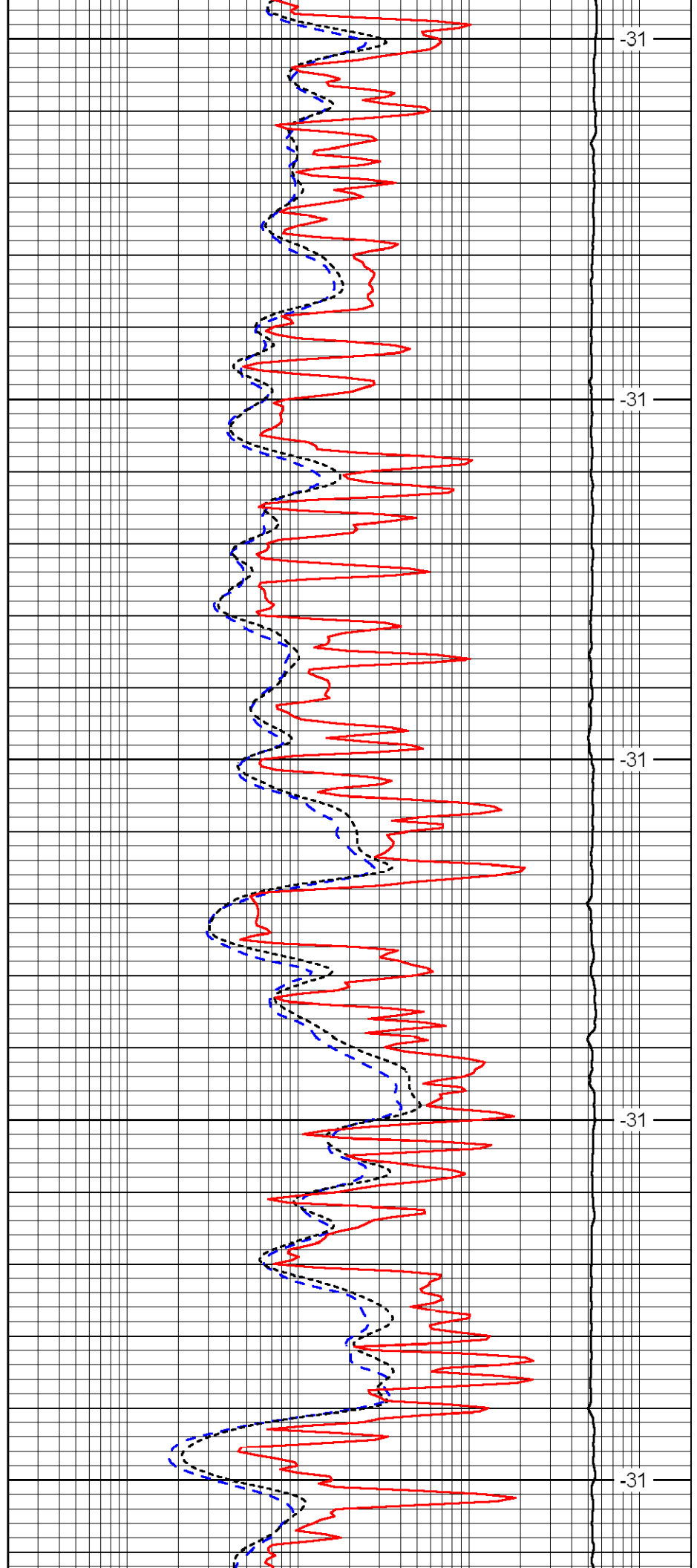
4600

4650

4700

4750

4800



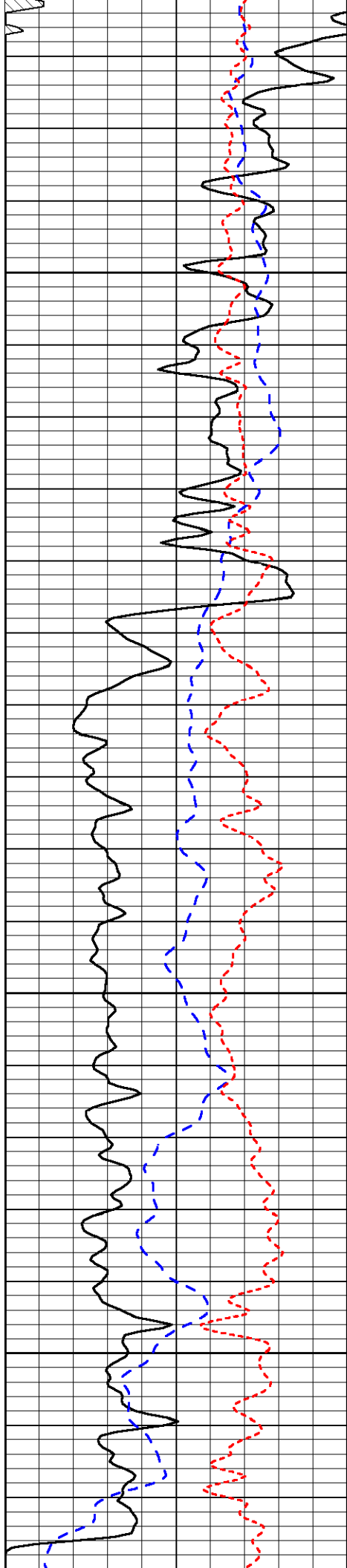
-31

-31

-31

-31

-31

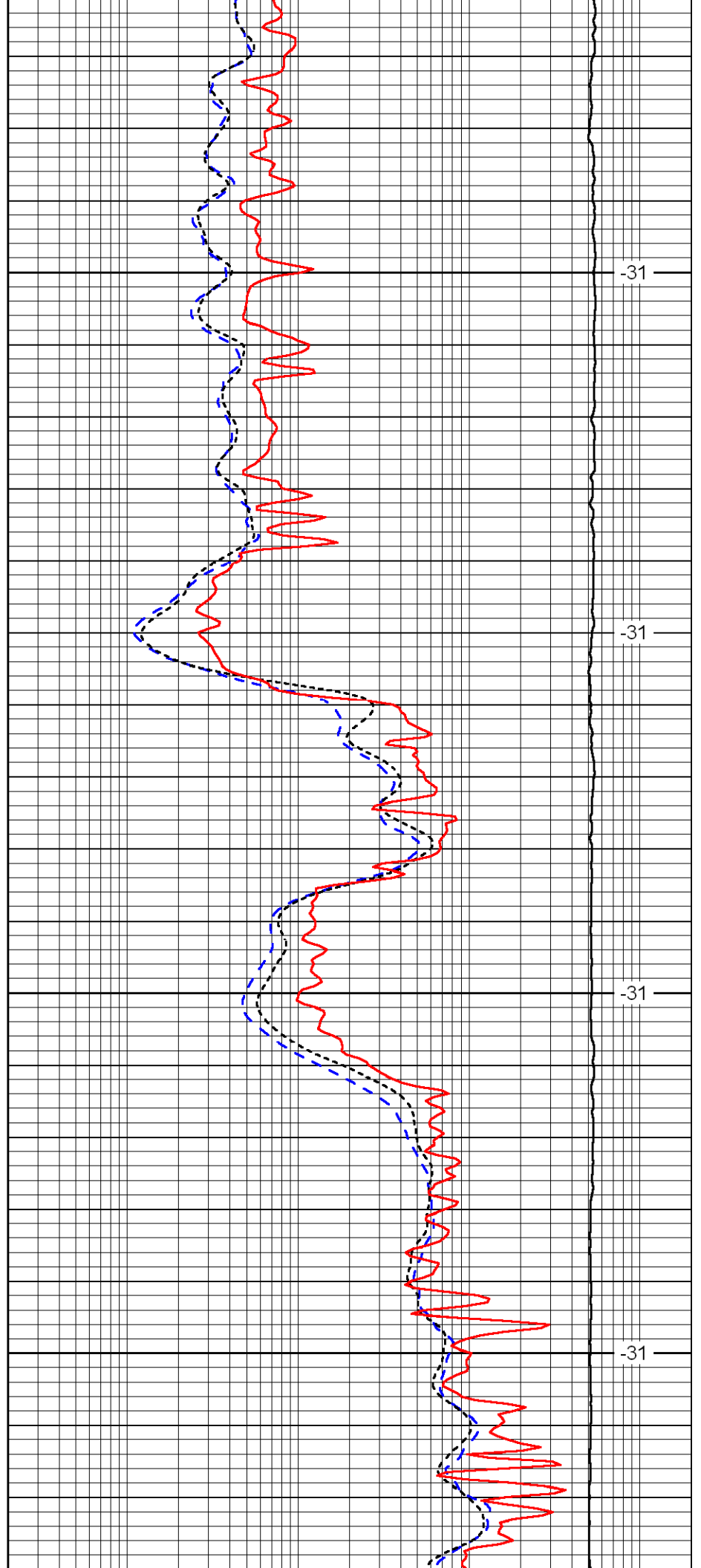


4850

4900

4950

5000

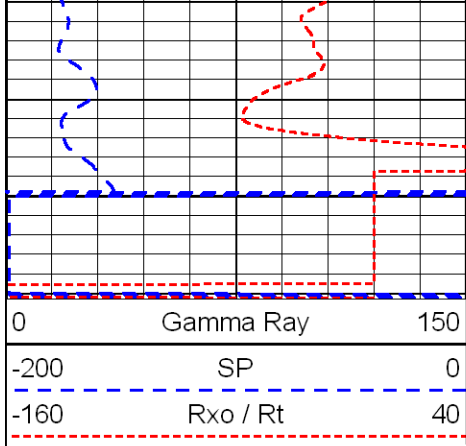


-31

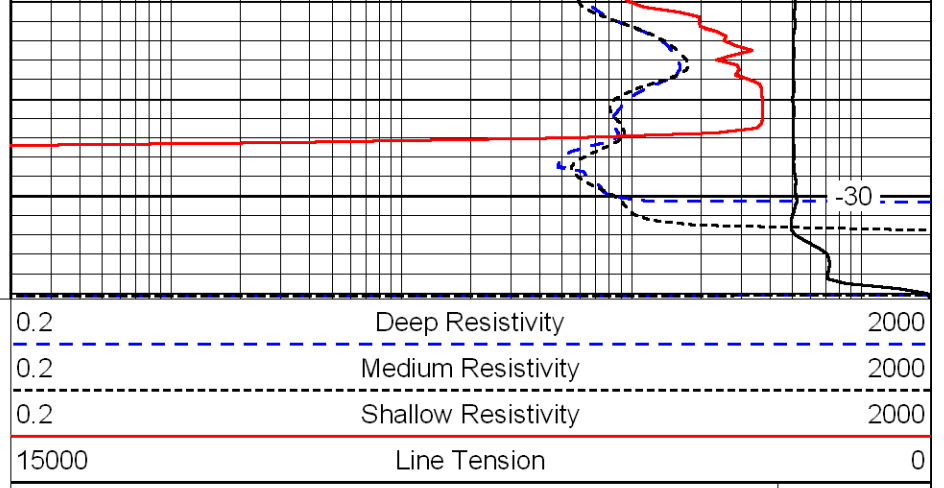
-31

-31

-31



5050



-30

LSPD