



## Dual Compensated Porosity Log

**DIGITAL LOG (785) 625-3858**

API No. 15-203-20,144-00-00	Company <b>Raymond Oil Company, Inc</b>	Well <b>Eder No. 1</b>
	Field <b>Wildcat</b>	
	County <b>Wichita</b>	State <b>Kansas</b>
	Location <b>SW - SW - SE 330' FSL &amp; 2275' FEL</b>	
	Sec: <b>17</b>	Twp: <b>20 S</b> Rge: <b>35 S</b>
Permanent Datum Log Measured From Drilling Measured From	Ground Level Kelly Bushing Kelly Bushing	Elevation 3144 11 Ft. Above Perm. Datum K.B. 3155 D.F. MEL G.L. 3144

Date	11/2/2009	
Run Number	One	
Type Log	CNL / CDL	
Depth Driller	5050	
Depth Logger	5054	
Bottom Logged Interval	5033	
Top Logged Interval	3400	
Type Fluid In Hole	Chemical	
Salinity, PPM CL	6,000	
Density	9.2	
Level	Full	
Max. Rec. Temp. F	127	
Operating Rig Time	4 Hours	
Equipment -- Location	15 Hays	
Recorded By	B. Becker	
Witnessed By	Max Lovely	

Borehole Record				Casing Record			
Run No	Bit	From	To	Size	Wgt.	From	To
1	12.25	00	267	8.625	24#	00	267
2	7.875	267	5050				

<<< Fold Here >>>

All interpretations are opinions based on inferences from electrical or other measurements and we cannot and do not guarantee the accuracy or correctness of any interpretation, and we shall not, except in the case of gross or willful negligence on our part, be liable or responsible for any loss, costs, damages, or expenses incurred or sustained by anyone resulting from any interpretation made by any of our officers, agents or employees. These interpretations are also subject to our general terms and conditions set out in our current Price Schedule.

**Comments**

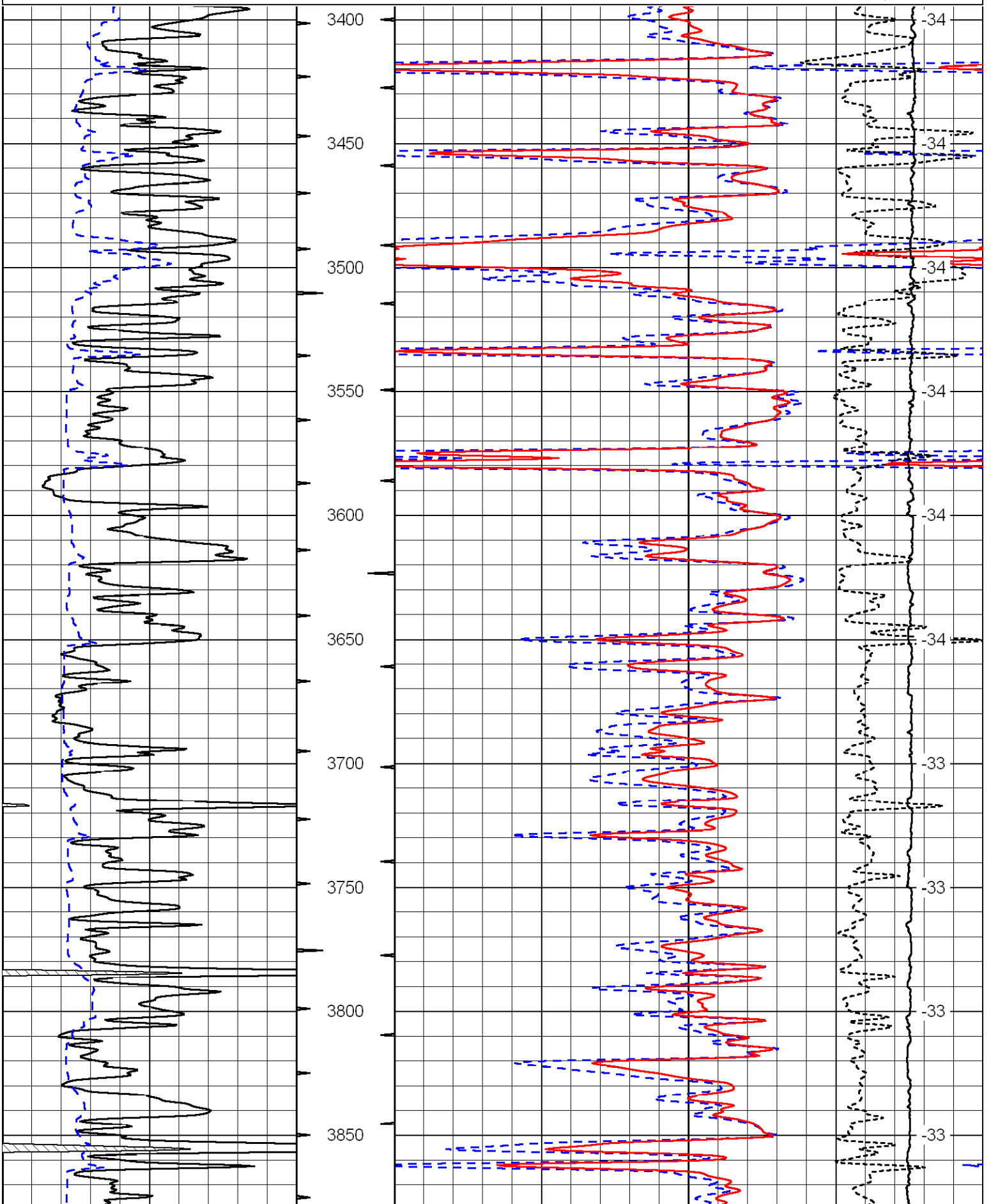
Thank you for using Log-Tech, Inc.  
(785) 625-3858

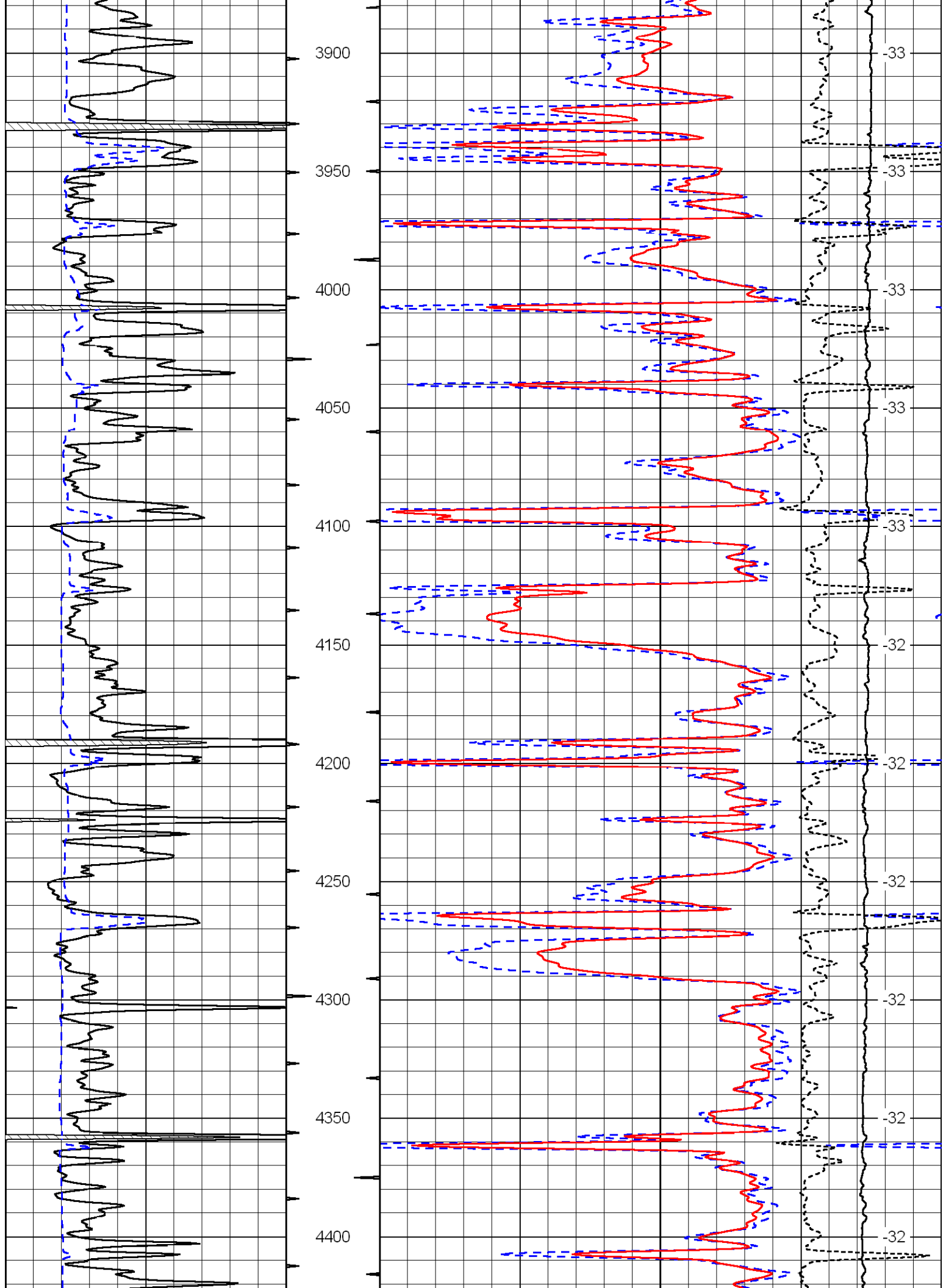
Marienthal, Ks; 1 East to Rd 20; 12 south;  
South into location through farm yard

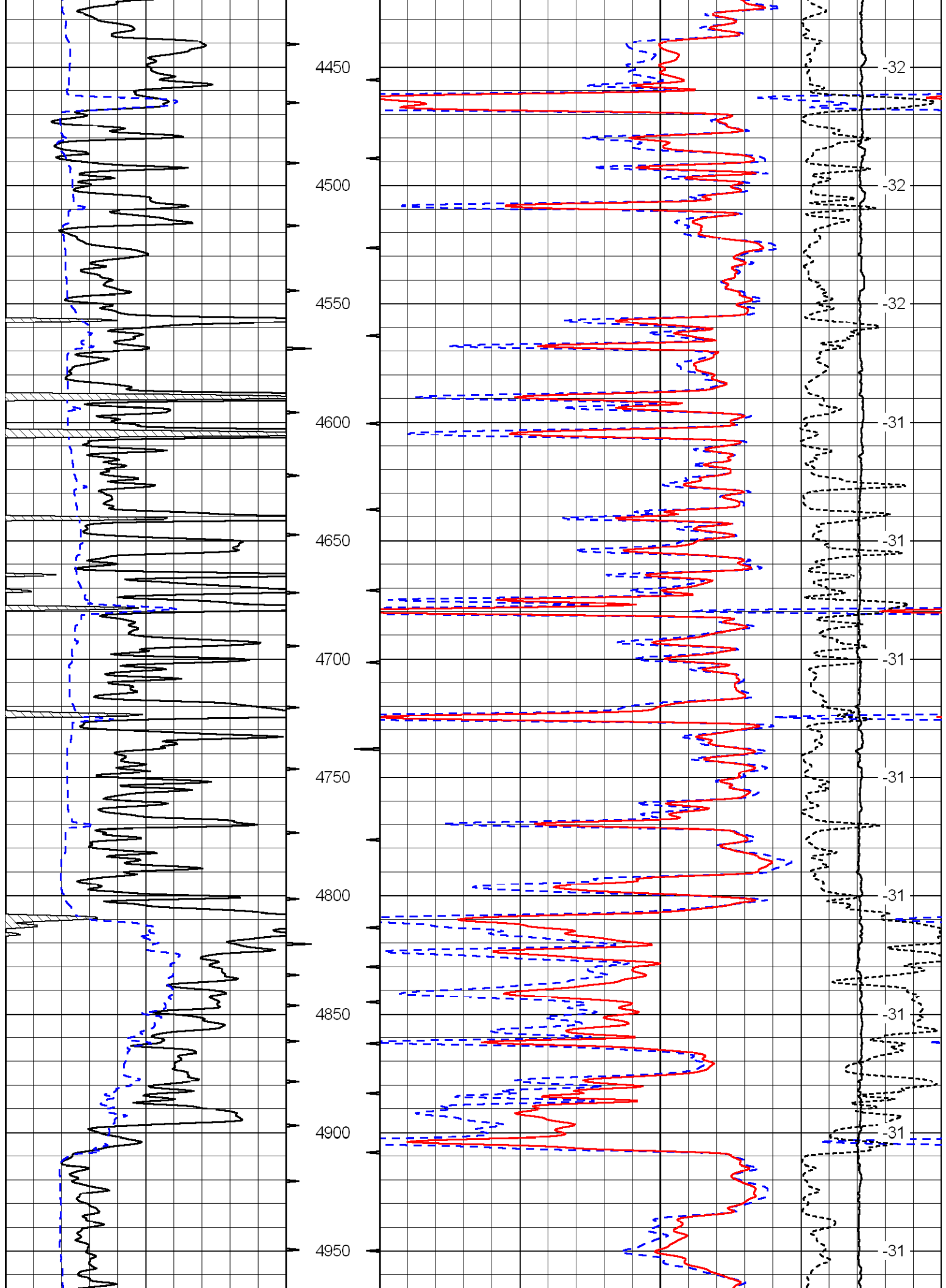
Database File:	c:\warrior\data\raymond oil_eder no. 1\raymondhd.db
Dataset Pathname:	DIL/raystk
Presentation Format:	cdl
Dataset Creation:	Fri Jan 02 11:07:01 2009
Charted by:	Depth in Feet scaled 1:600

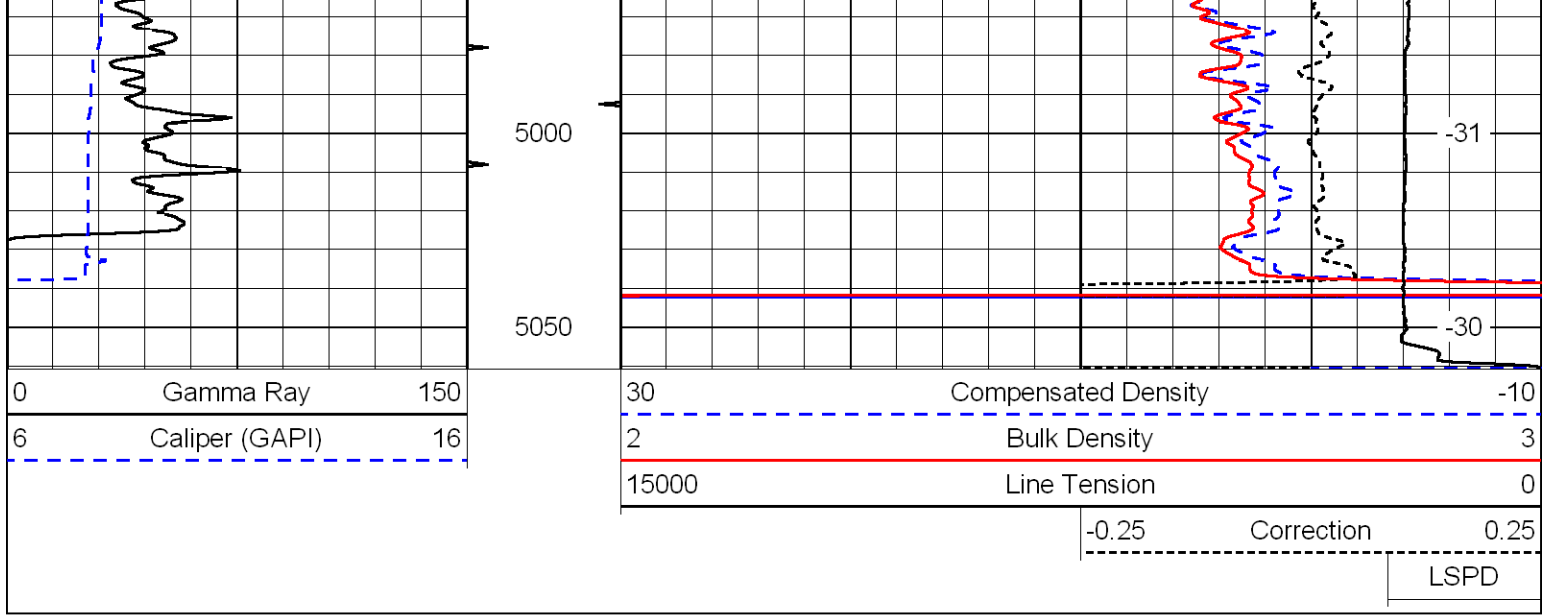
0	Gamma Ray	150
6	Caliper (GAPI)	16

30	Compensated Density	-10
2	Bulk Density	3
15000	Line Tension	0
	-0.25	0.25
	Correction	
		LSPD









Database File: c:\warrior\data\raymond oil\_eder no. 1\raymondhd.db  
 Dataset Pathname: DIL/raystk  
 Presentation Format: cndlspec  
 Dataset Creation: Fri Jan 02 11:07:01 2009  
 Charted by: Depth in Feet scaled 1:240

