



Microresistivity Log

DIGITAL LOG (785) 625-3858

API No.	15-203-20,144-00-00		
Company	Raymond Oil Company, Inc		
Well	Eder No. 1		
Field	Wildcat		
County	Wichita	State	Kansas
Location	SW - SW - SE 330' FSL & 2275' FEL		
Sec: 17	Twp: 20 S	Rge: 35 S	Elevation K.B. 3155 D.F. 3144 G.L. 3144
Permanent Datum	Ground Level	Elevation 3144	
Log Measured From	Kelly Bushing	11 Ft. Above Perm. Datum	
Drilling Measured From	Kelly Bushing		

Date	11/2/2009	
Run Number	Two	
Depth Driller	5050	
Depth Logger	5054	
Bottom Logged Interval	5053	
Top Log Interval	3400	
Casing Driller	8.625 @ 267	
Casing Logger	266	
Bit Size	7.875	
Type Fluid in Hole	Chemical	
Salinity, ppm CL	6.000	
Density / Viscosity	9.2	54
pH / Fluid Loss	9.0	9.6
Source of Sample	Flowline	
Rm @ Meas. Temp	0.90 @ 55	
Rmf @ Meas. Temp	0.68 @ 55	
Rmc @ Meas. Temp	1.22 @ 55	
Source of Rmf / Rmc	Charts	
Rm @ BHT	0.39 @ 127	
Operating Rig Time	4 Hours	
Max Rec. Temp. F	127	
Equipment Number	15	
Location	Hays	
Recorded By	B. Becker	
Witnessed By	Max Lovely	

<<< Fold Here >>>

All interpretations are opinions based on inferences from electrical or other measurements and we cannot and do not guarantee the accuracy or correctness of any interpretation, and we shall not, except in the case of gross or willful negligence on our part, be liable or responsible for any loss, costs, damages, or expenses incurred or sustained by anyone resulting from any interpretation made by any of our officers, agents or employees. These interpretations are also subject to our general terms and conditions set out in our current Price Schedule.

Comments

Thank you for using Log-Tech, Inc.
(785) 625-3858

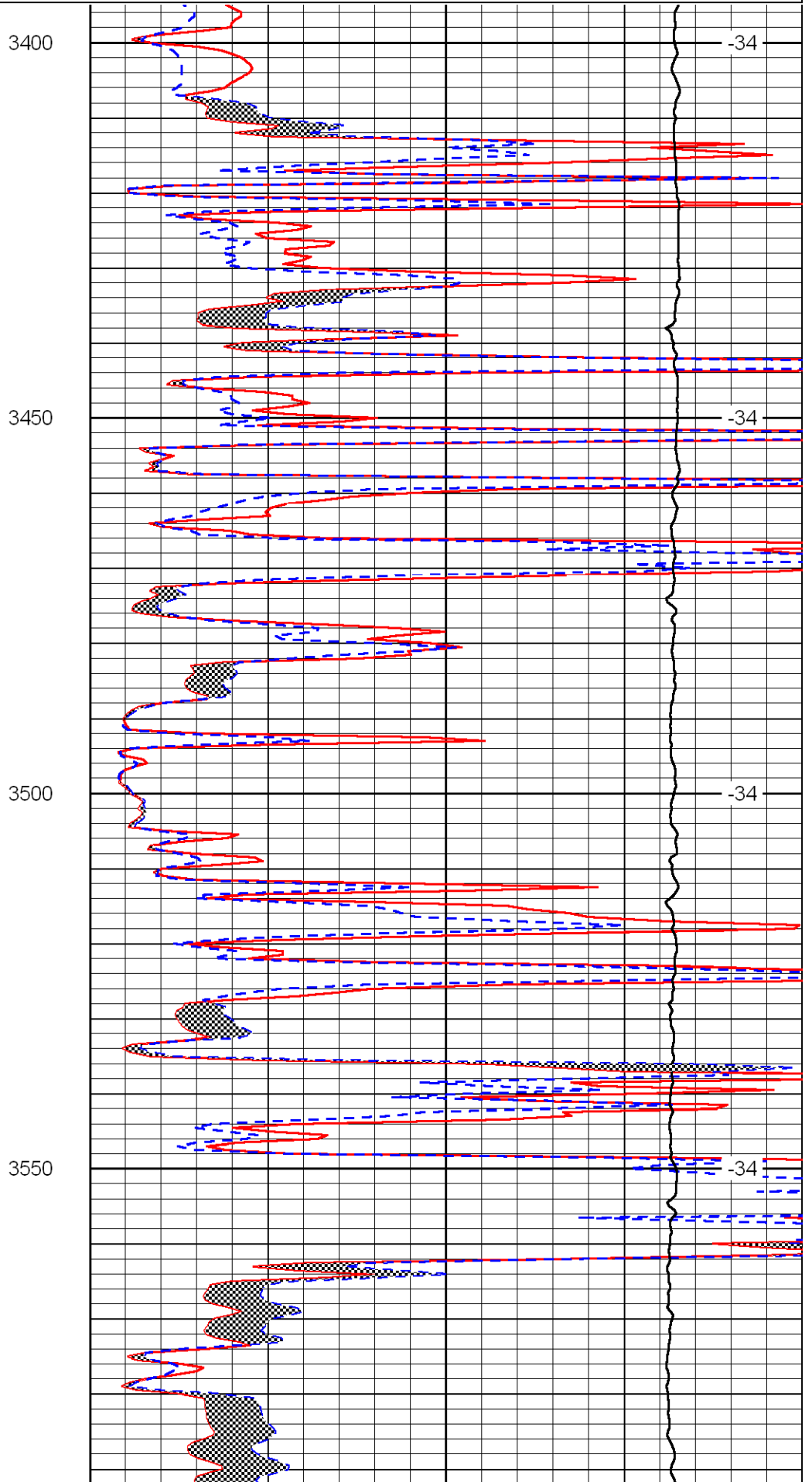
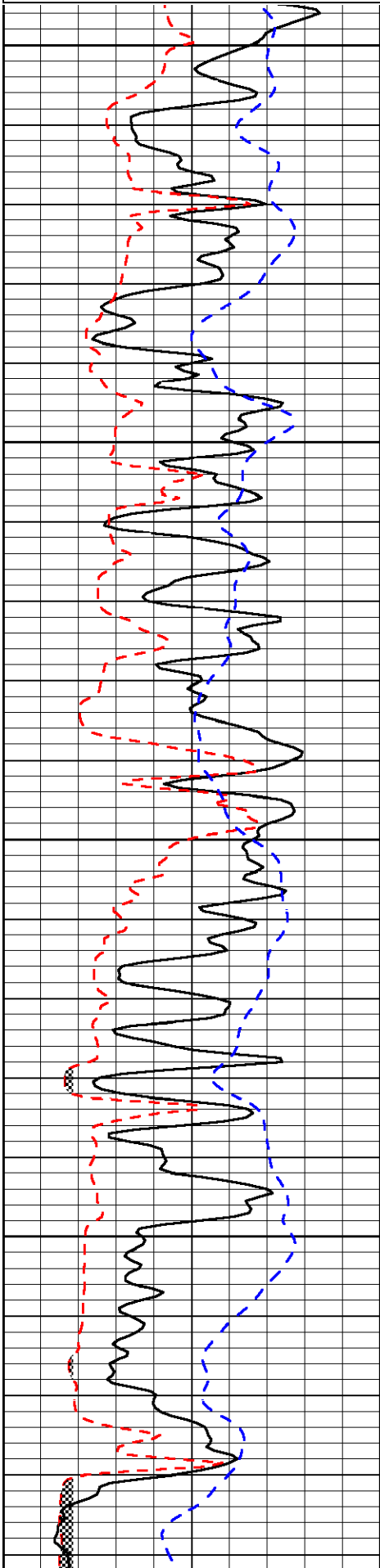
Marienthal, Ks; 1 East to Rd 20; 12 south;
South into location through farm yard

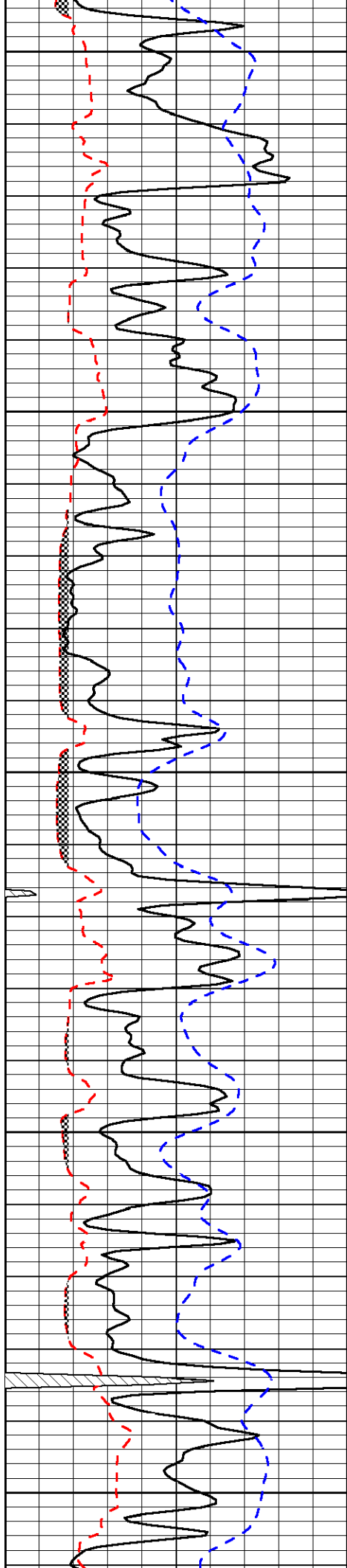
Database File: c:\warrior\data\raymond oil_eder no. 1\raymondhd.db
 Dataset Pathname: DIL/raystk
 Presentation Format: micro
 Dataset Creation: Fri Jan 02 11:07:01 2009
 Charted by: Depth in Feet scaled 1:240

0	Gamma Ray	150
6	Micro Log Caliper (GAPI)	16
-200	SP	0

0	Micro Inverse 1 X 1	40
0	Micro Normal 2"	40
10000	Line Weight	0

LSPD





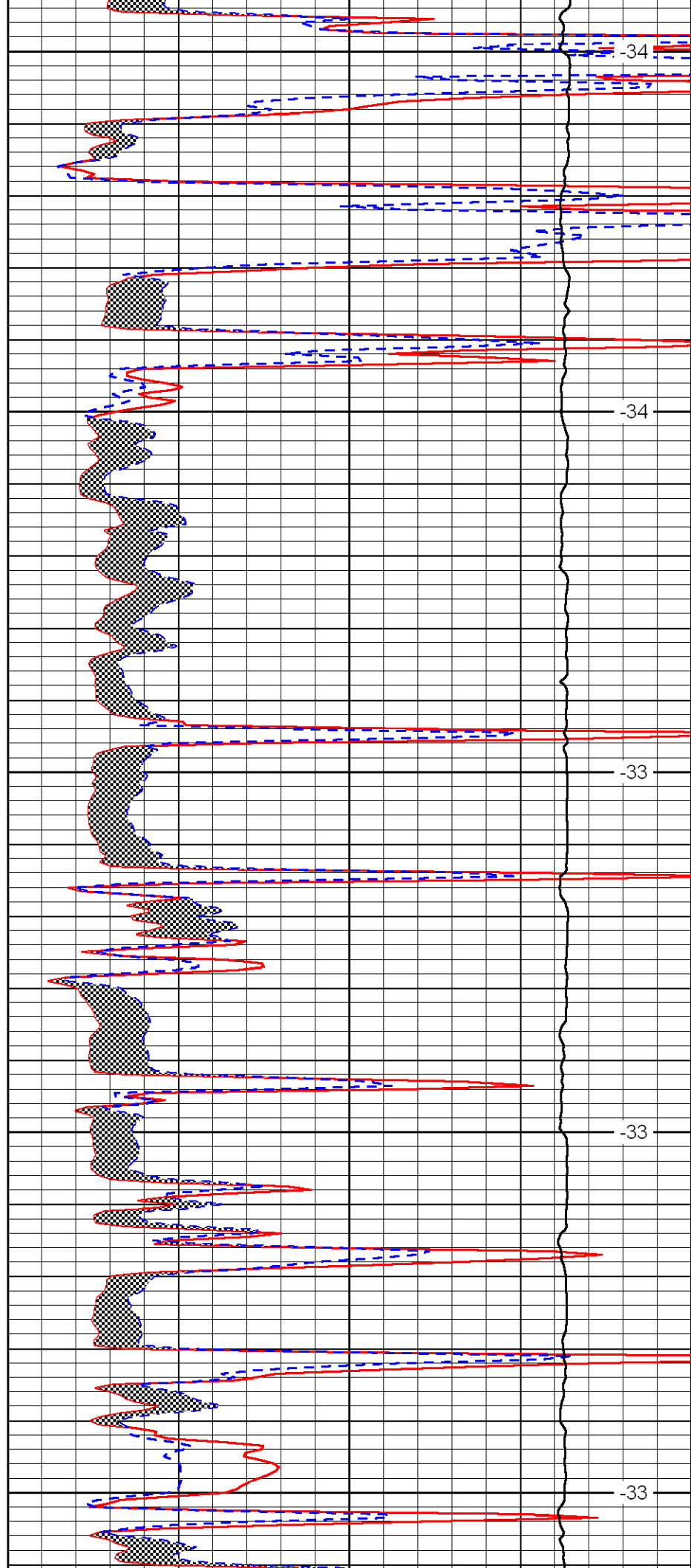
3600

3650

3700

3750

3800



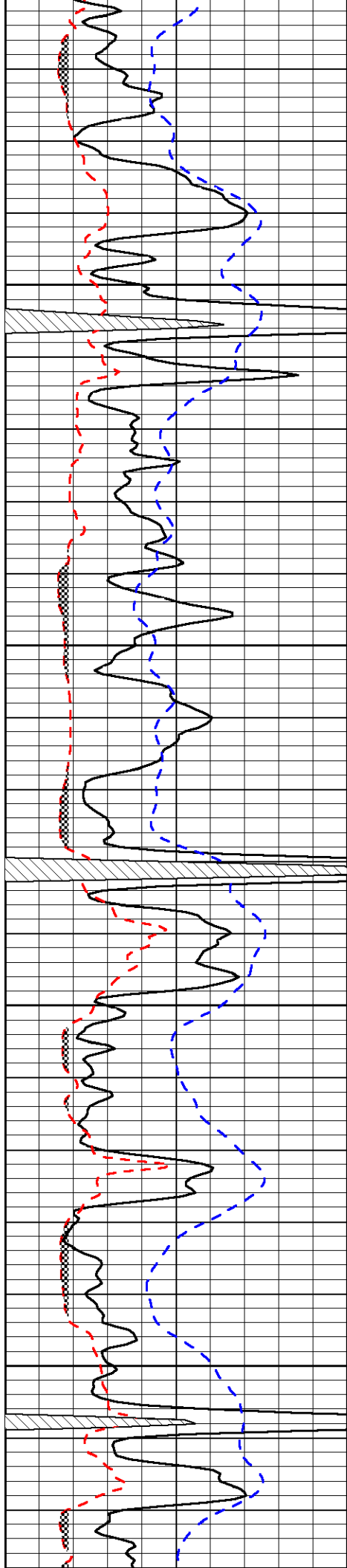
-34

-34

-33

-33

-33

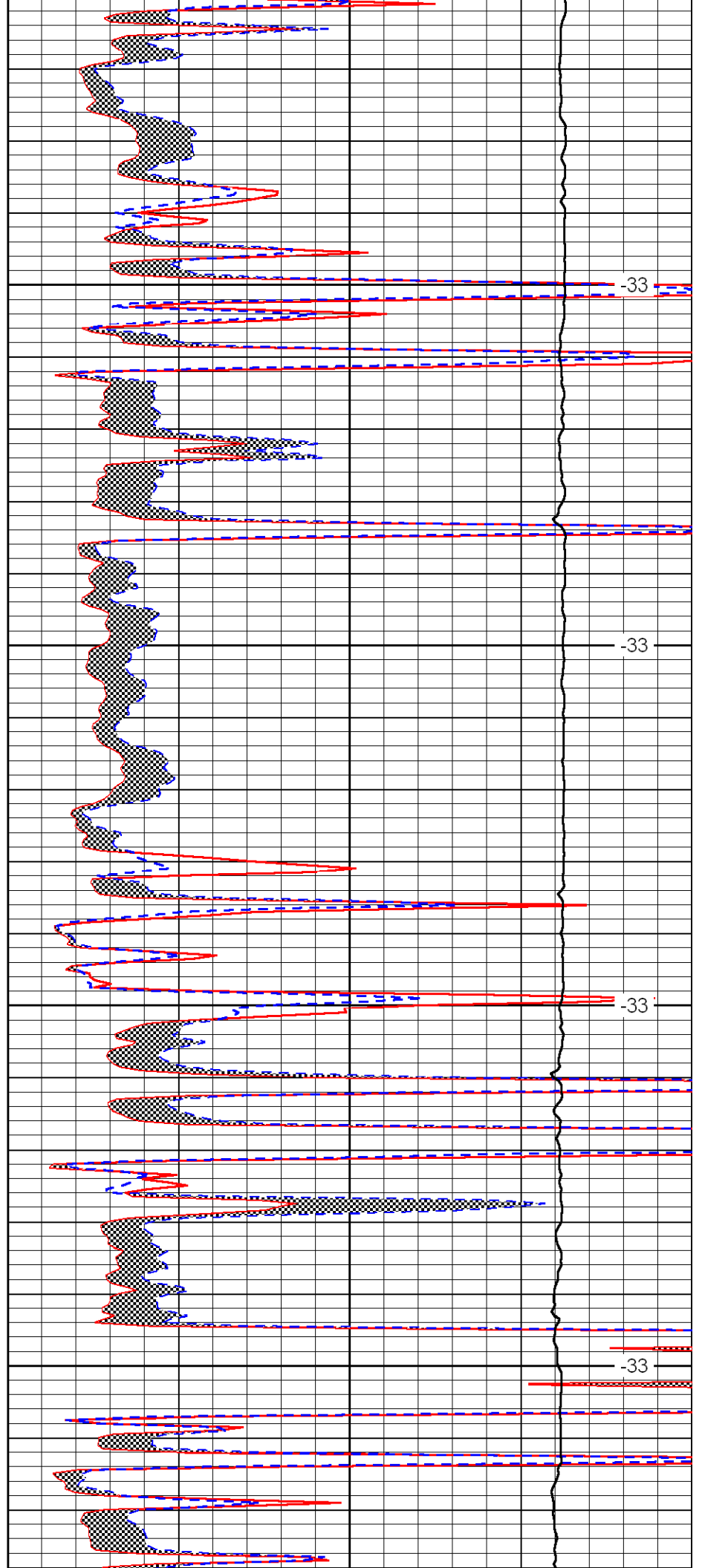


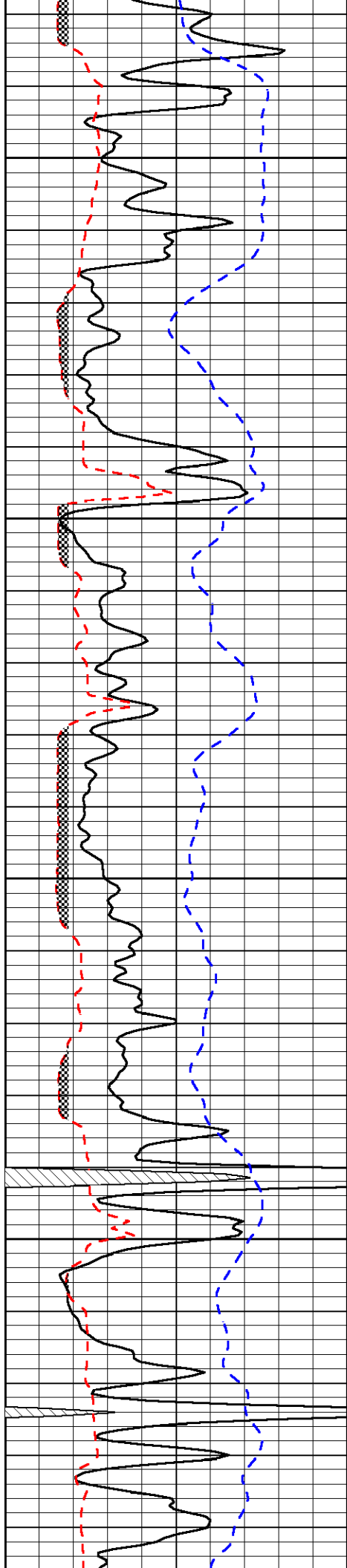
3850

3900

3950

4000



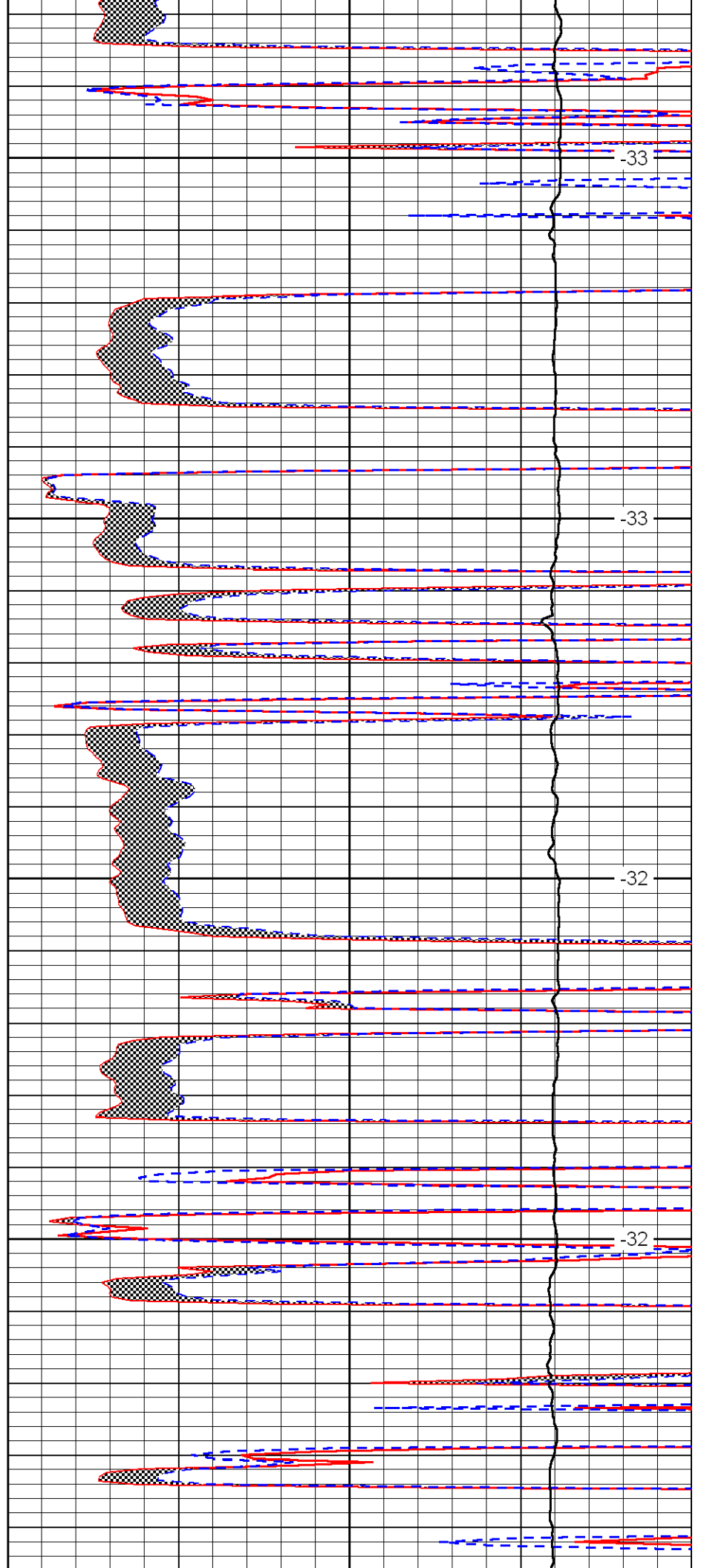


4050

4100

4150

4200

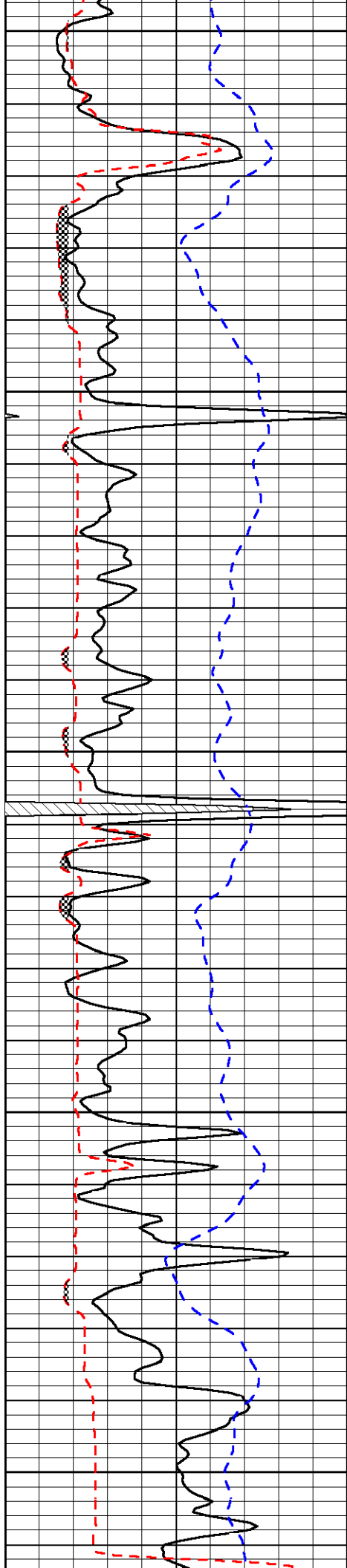


-33

-33

-32

-32



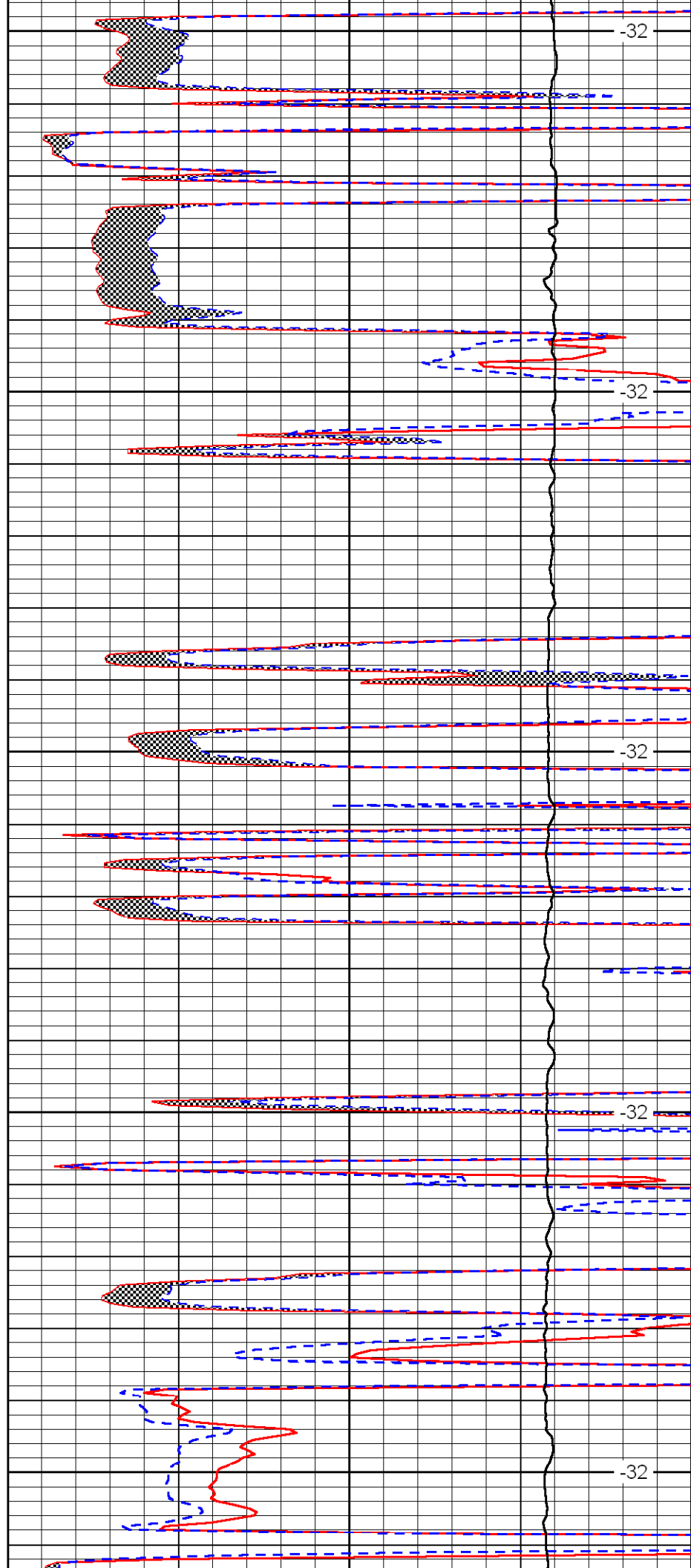
4250

4300

4350

4400

4450



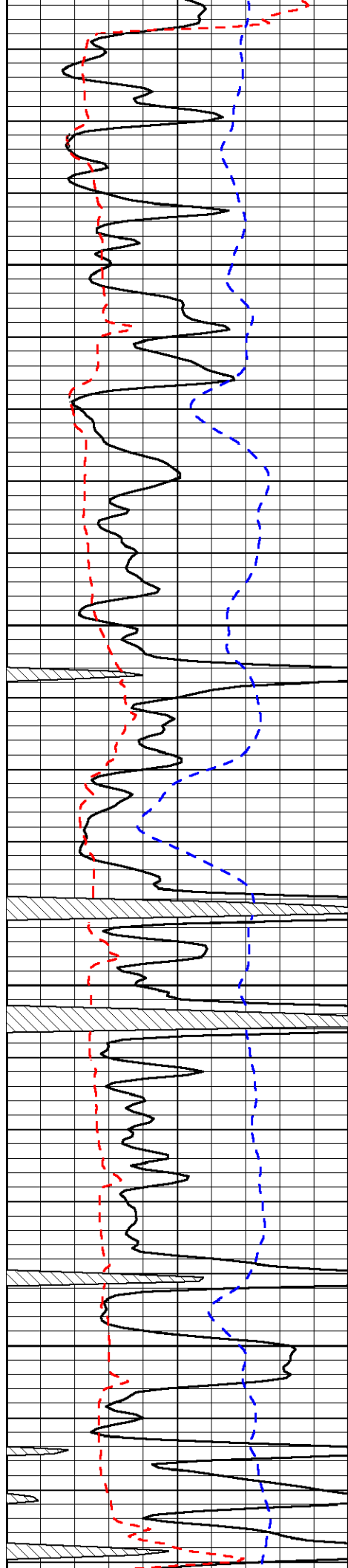
-32

-32

-32

-32

-32

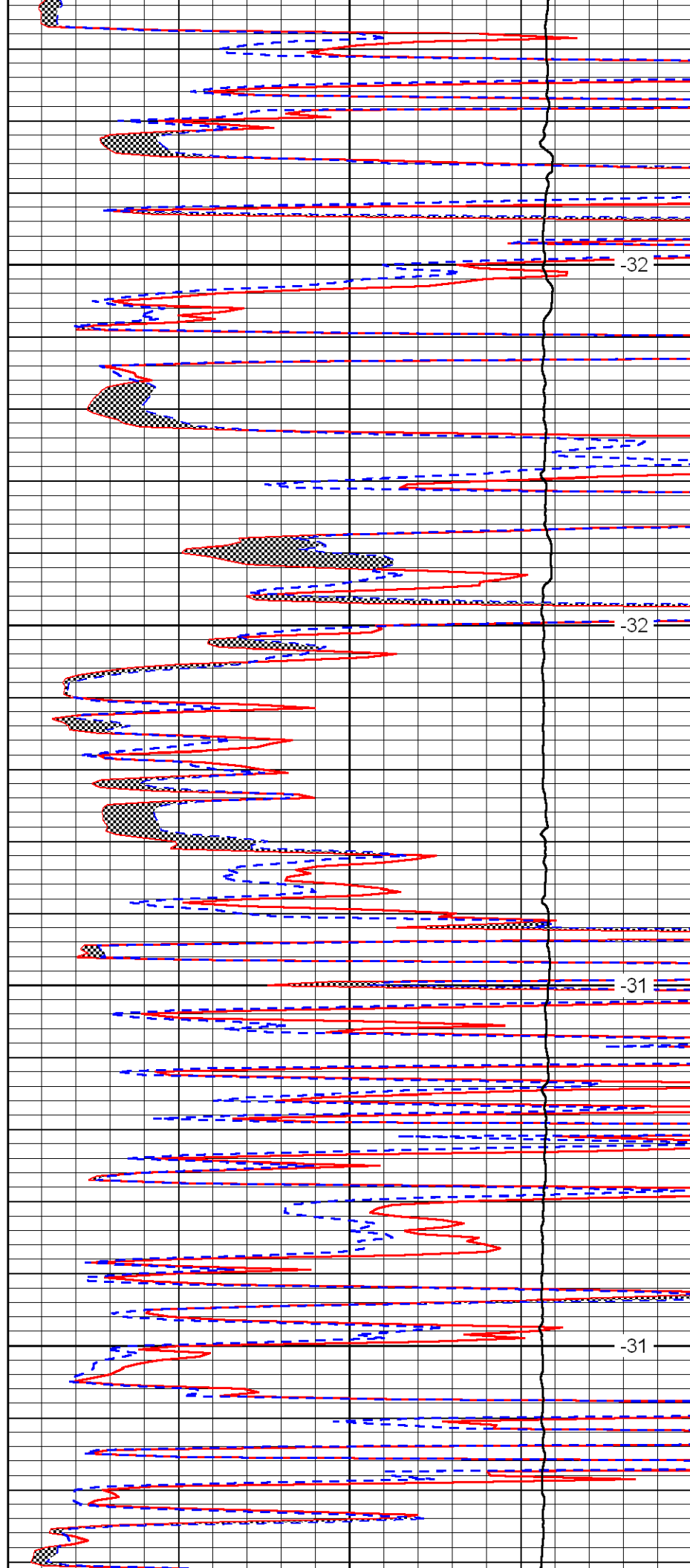


4500

4550

4600

4650

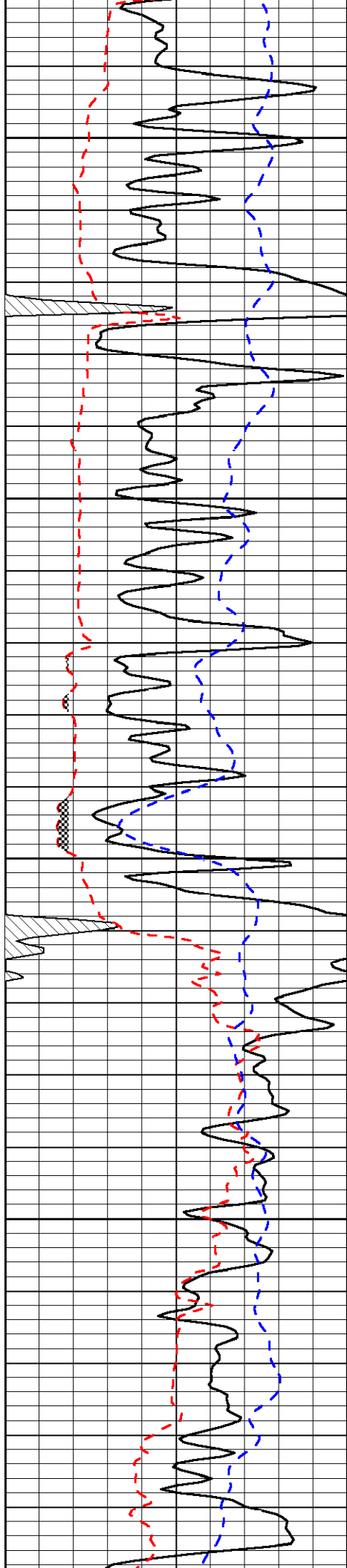


-32

-32

-31

-31

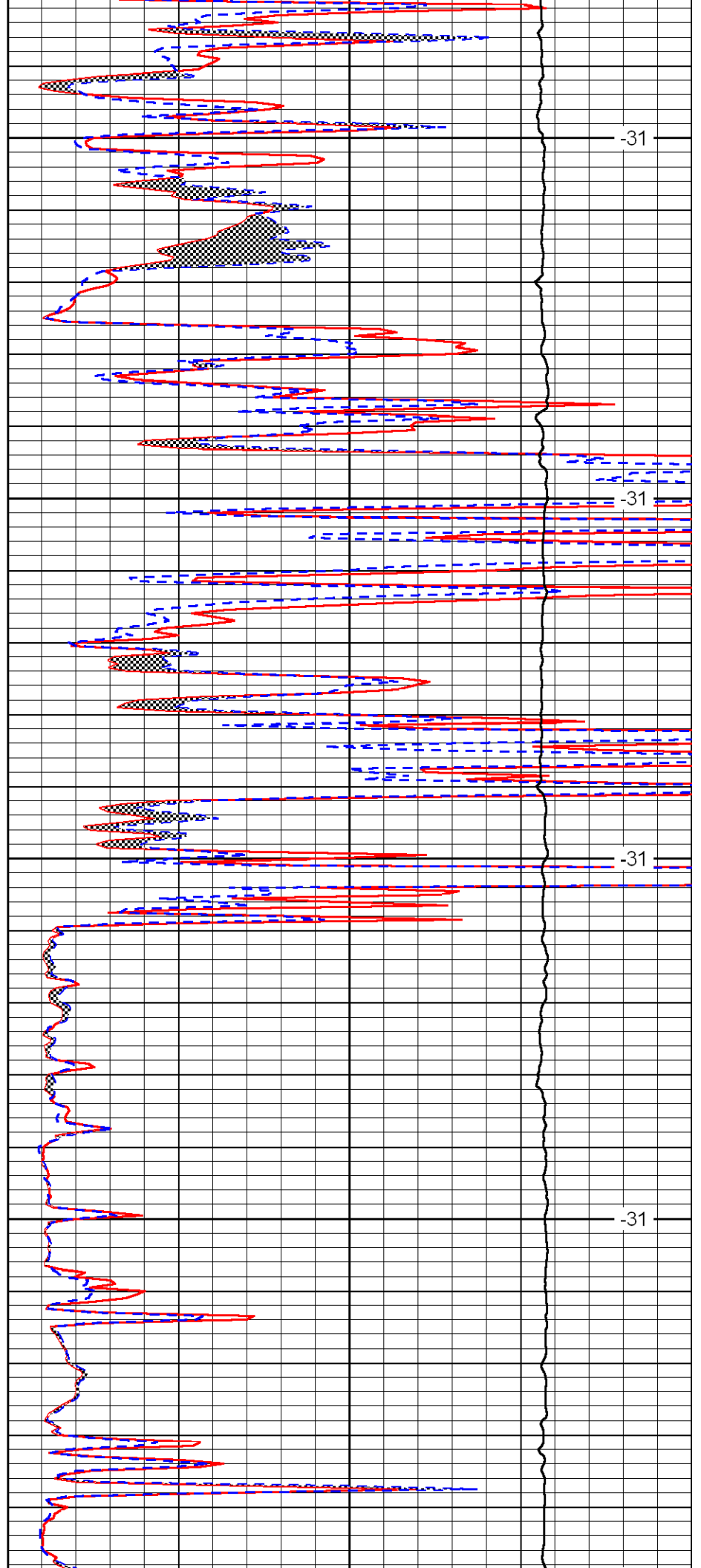


4700

4750

4800

4850

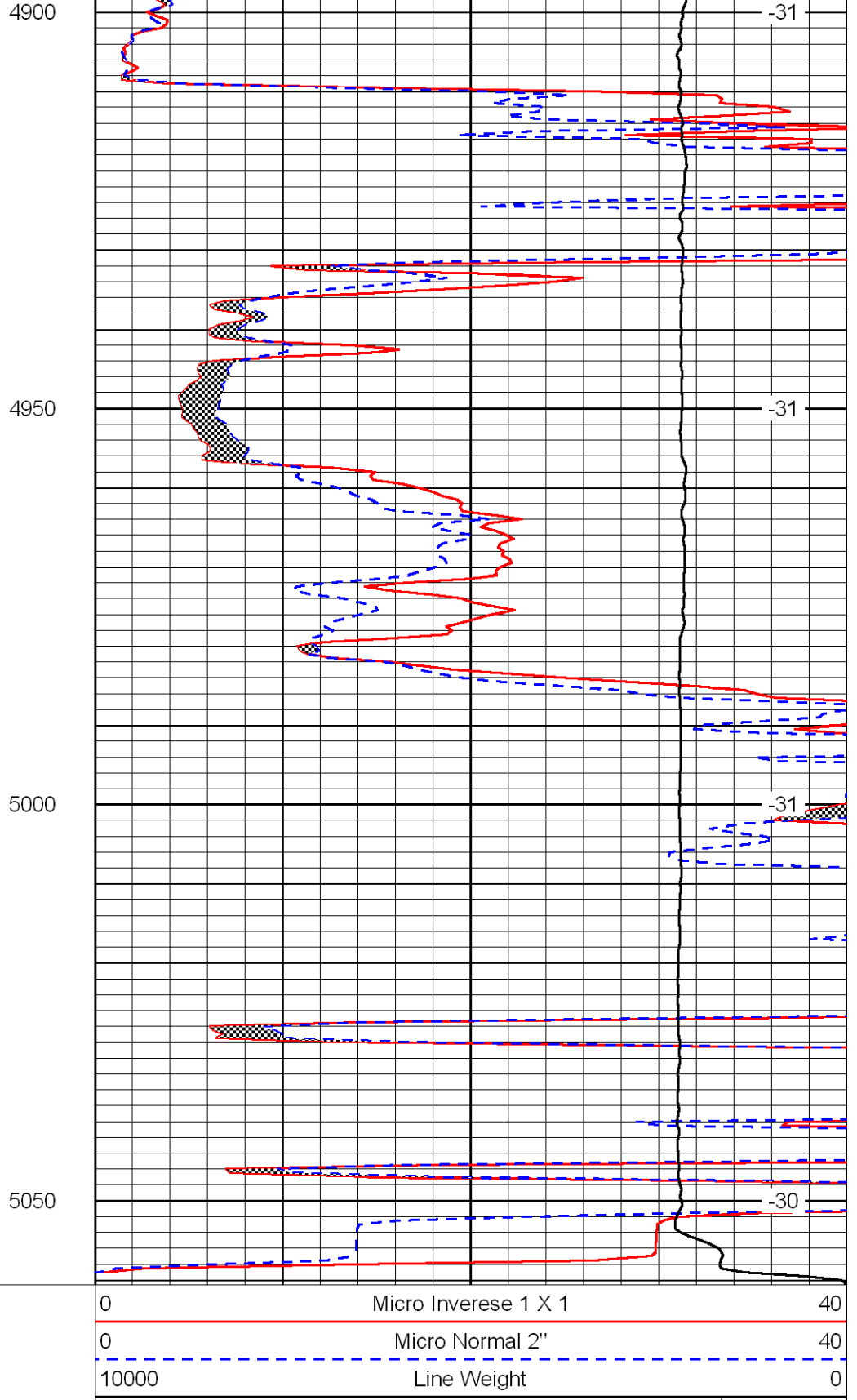
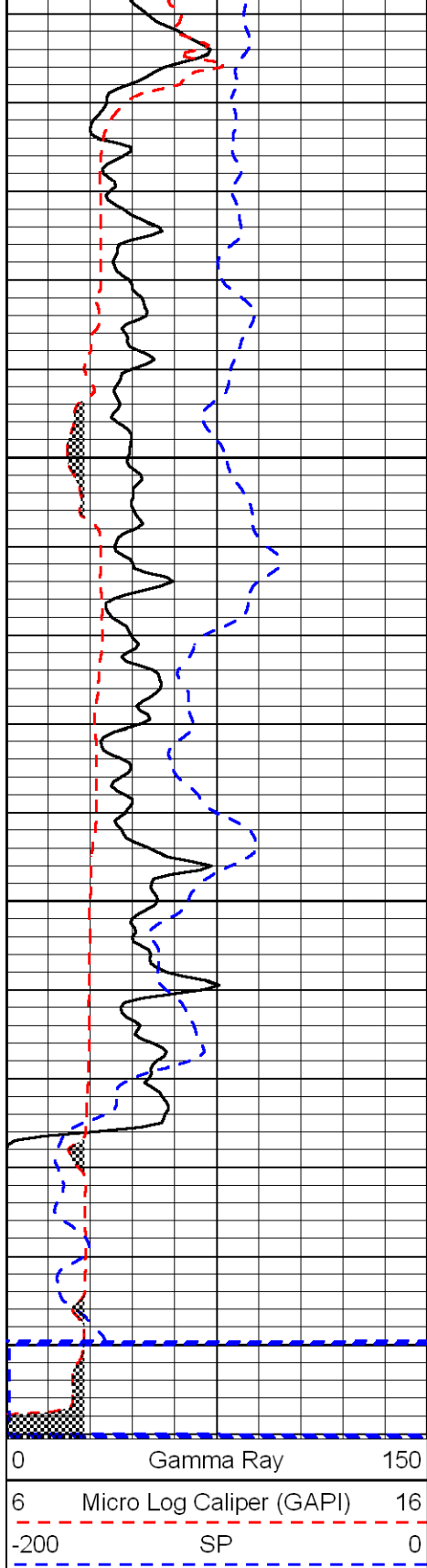


-31

-31

-31

-31



LSPD