



# Microresistivity Log

**DIGITAL LOG** (785) 625-3858

API No.	15-165-21,842-00-00		
Company	Samuel Gary Jr. and Assoc., Inc.		
Well	Maier - Yarmer No. 1-26		
Field	Wildcat		
County	Rush	State	Kansas
Location	NE NW SW 2475' FSL & 1225' FWL		
Sec: 26	Twp: 16S	Rge: 16W	
Permanent Datum	Ground Level	Elevation 1974	Other Services CNL/CDL DIL/BHCS
Log Measured From	Kelly Bushing	10 Ft. Above Perm. Datum	
Drilling Measured From	Frotkelly Bushing		K.B. 1984 D.F. 1974 G.L. 1974

Date	12/13/2008
Run Number	Two
Depth Driller	3650
Depth Logger	3651
Bottom Logged Interval	3650
Top Log Interval	1500
Casing Driller	8.625 @ 1063
Casing Logger	1062
Bit Size	7.875
Type Fluid in Hole	Chemical
Salinity, ppm CL	9.200
Density / Viscosity	9.4 55
pH / Fluid Loss	9.5 11.2
Source of Sample	Flowline
Rm @ Meas. Temp	1 @ 55
Rmf @ Meas. Temp	.75 @ 55
Rmc @ Meas. Temp	1.35 @ 55
Source of Rmf / Rmc	Charts
Rm @ BHT	.48 @ 115
Operating Rig Time	5 Hours
Max Rec. Temp. F	115
Equipment Number	10
Location	Hays
Recorded By	Jason Wellbrock
Witnessed By	Justin Carter

<<< Fold Here >>>

All interpretations are opinions based on inferences from electrical or other measurements and we cannot and do not guarantee the accuracy or correctness of any interpretation, and we shall not, except in the case of gross or willful negligence on our part, be liable or responsible for any loss, costs, damages, or expenses incurred or sustained by anyone resulting from any interpretation made by any of our officers, agents or employees. These interpretations are also subject to our general terms and conditions set out in our current Price Schedule.

### Comments

Thank you for using Log-Tech, Inc.  
(785) 625-3858

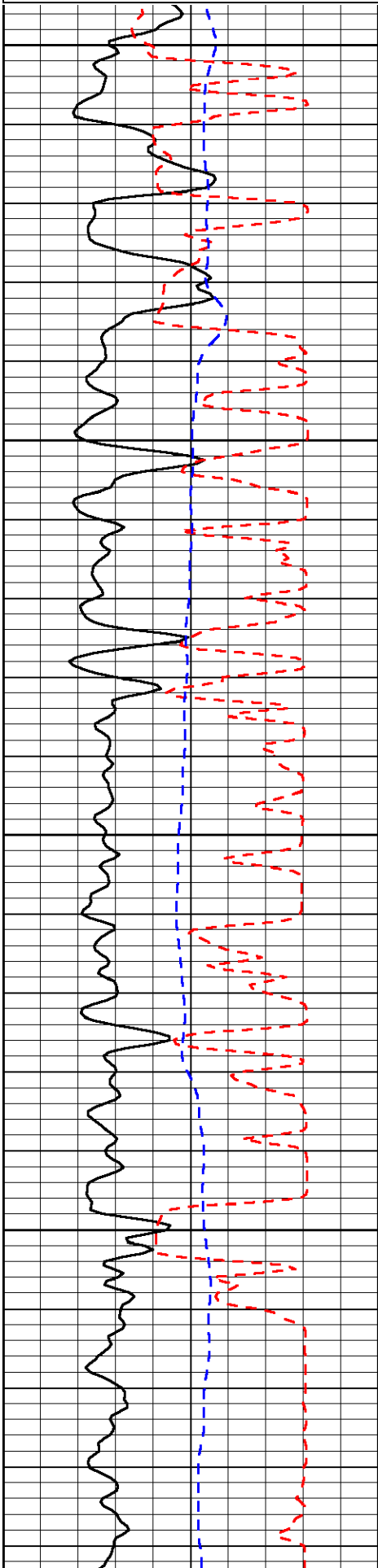
Otis 9 N, 1/2 W, 1/2 N, S Into

Database File: c:\warrior\data\sam gary\_maier - yarmer no. 1-26\samhd.db  
 Dataset Pathname: dil/sam2in  
 Presentation Format: micro  
 Dataset Creation: Sat Dec 13 07:14:08 2008  
 Charted by: Depth in Feet scaled 1:240

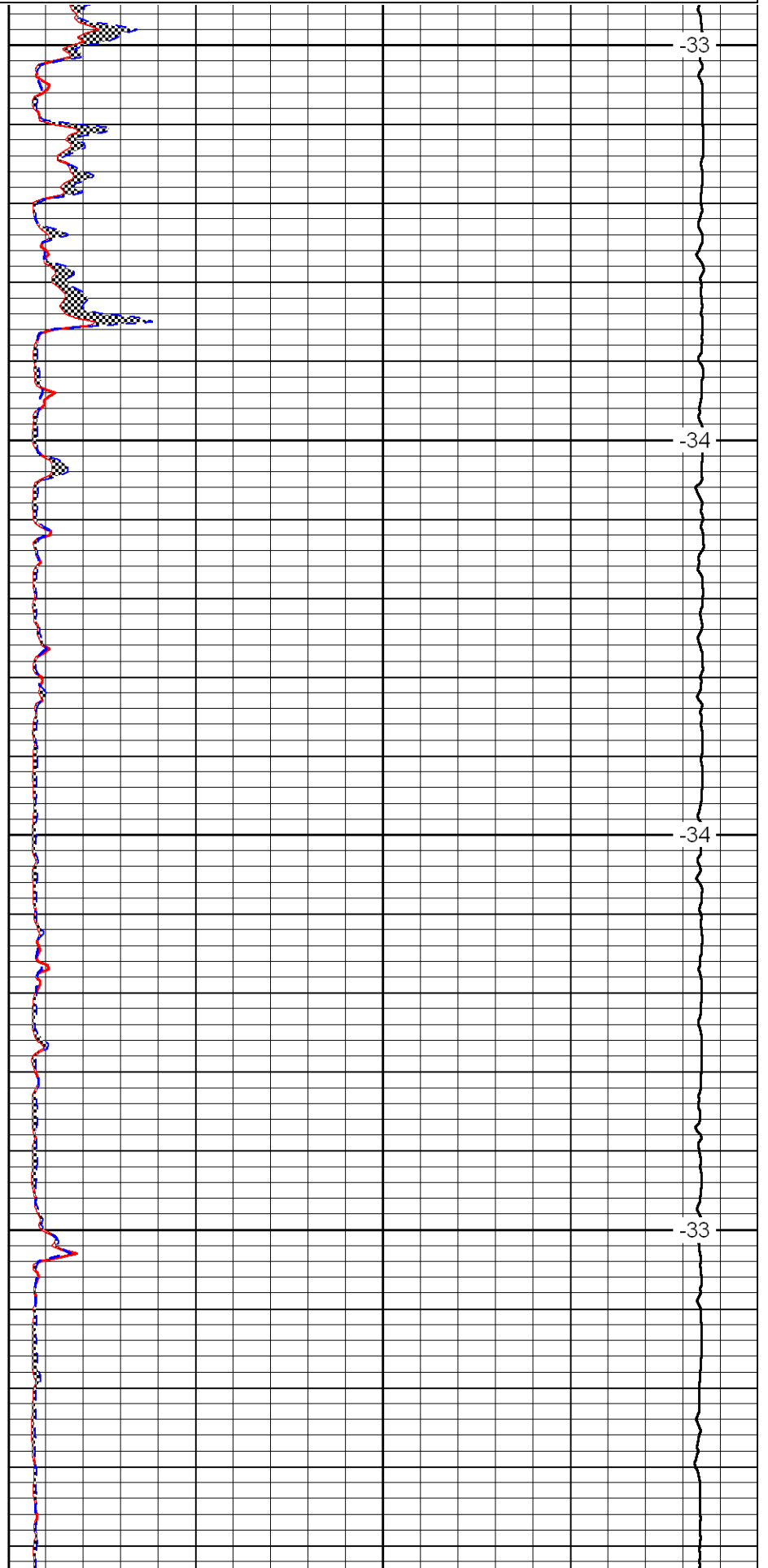
0	Gamma Ray	150
6	Micro Log Caliper (GAPI)	16
-200	SP	0

0	Micro Inverse 1 X 1	40
0	Micro Normal 2"	40
10000	Line Weight	0

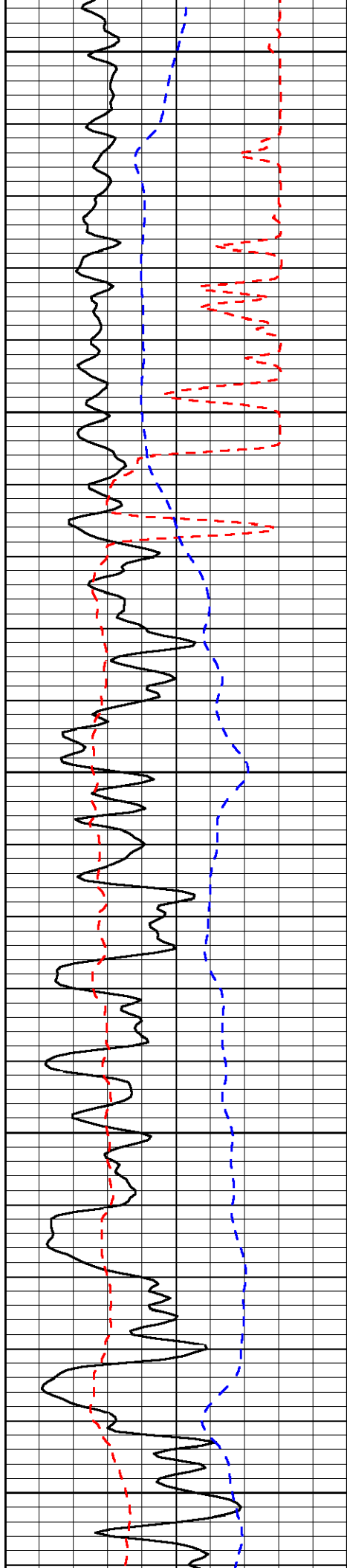
LSPD



1500  
1550  
1600  
1650



-33  
-34  
-34  
-33



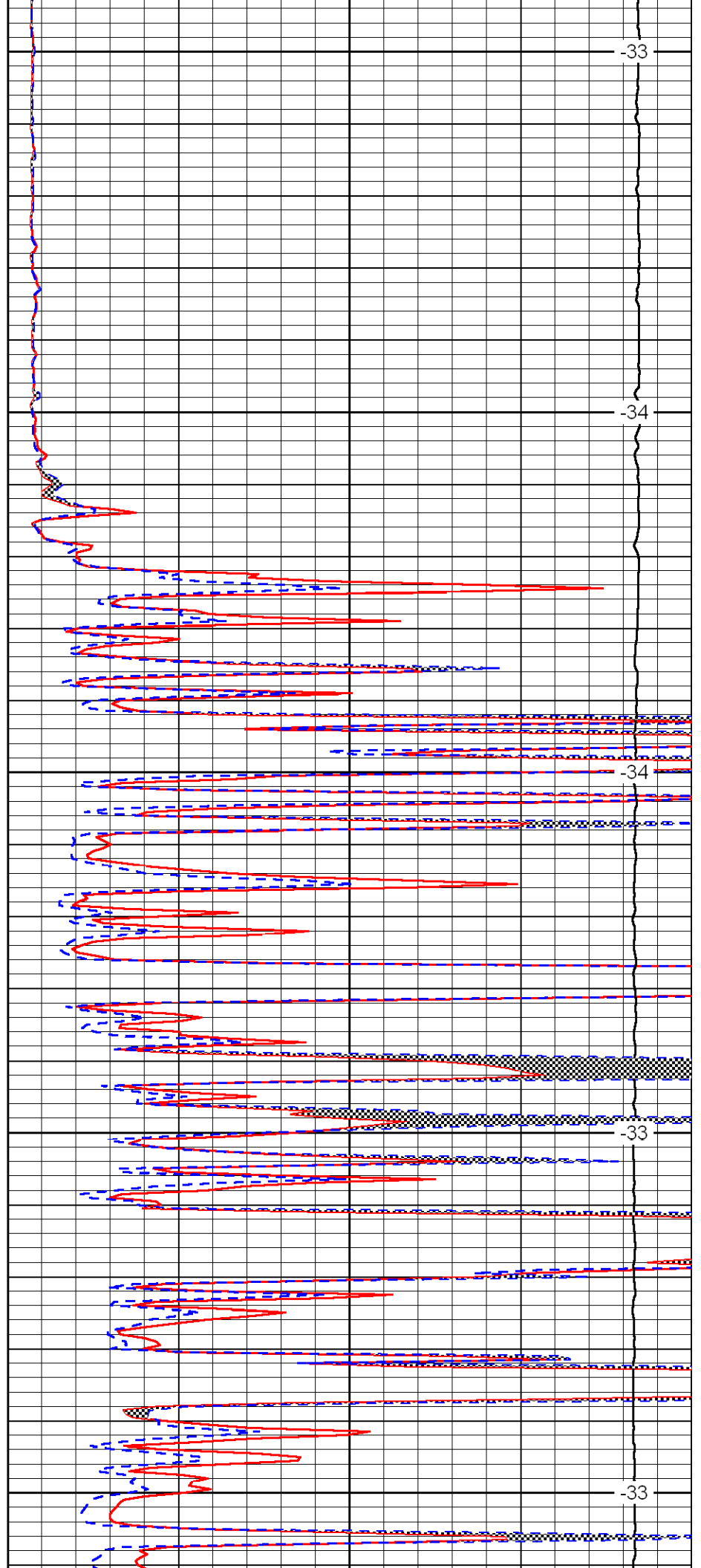
1700

1750

1800

1850

1900



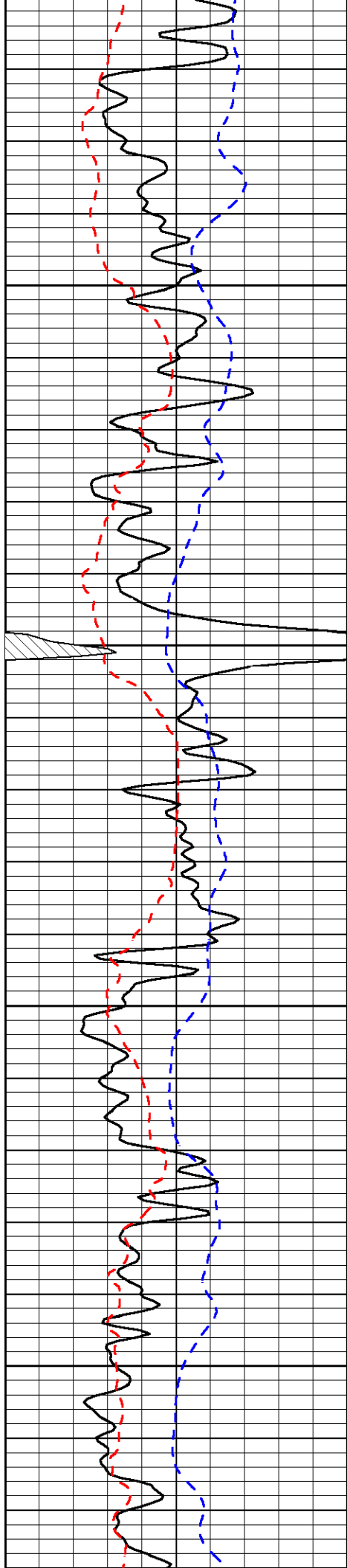
-33

-34

-34

-33

-33

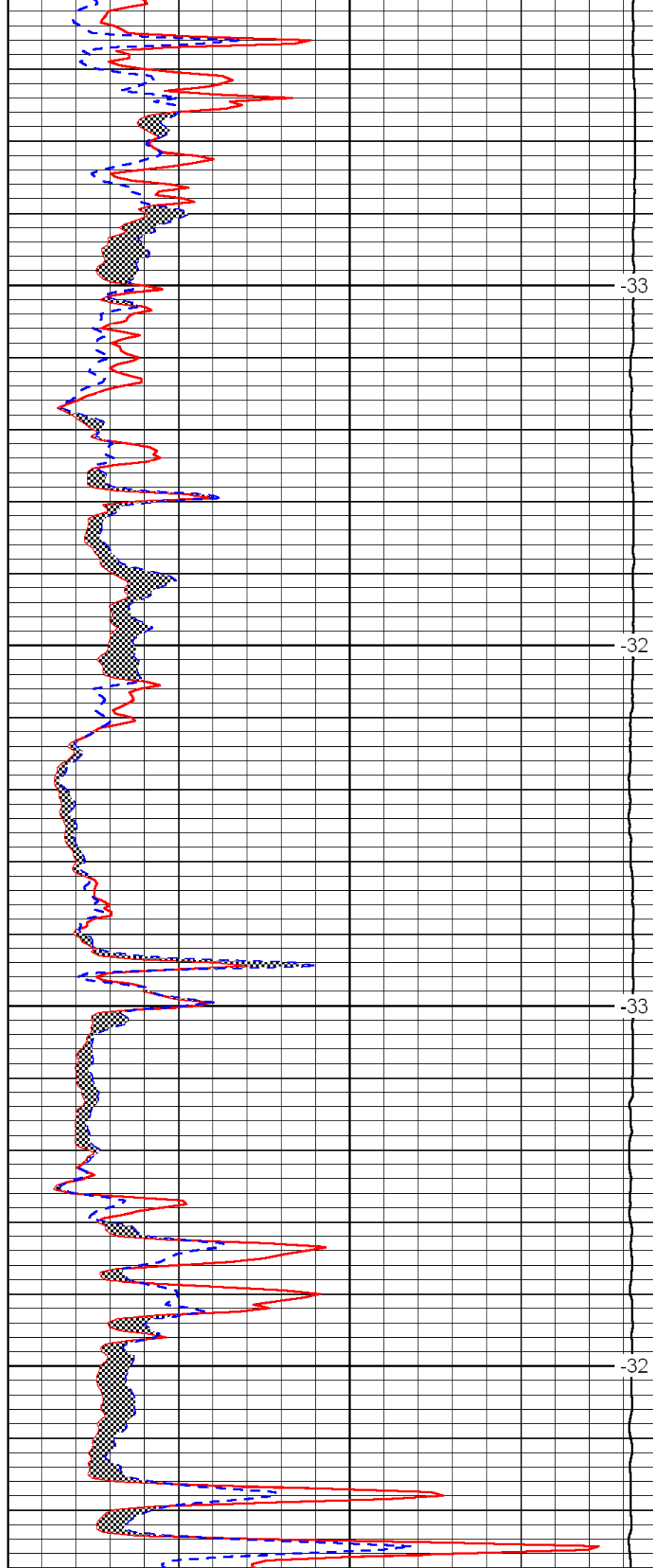


1950

2000

2050

2100

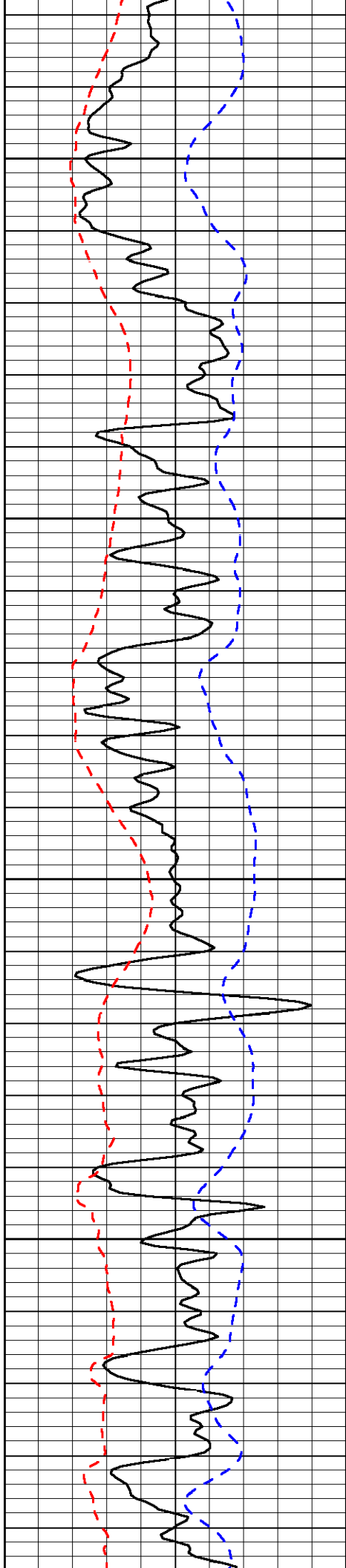


-33

-32

-33

-32

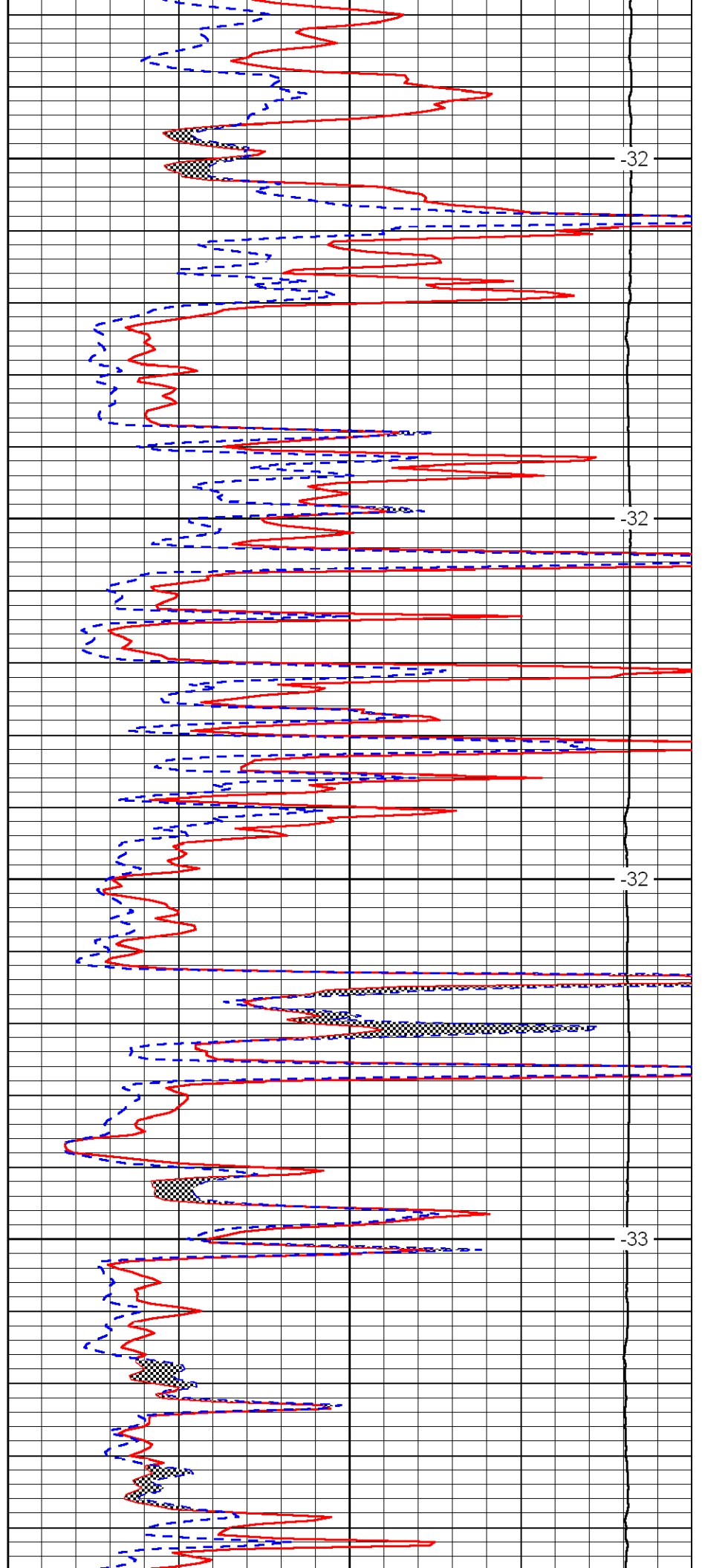


2150

2200

2250

2300

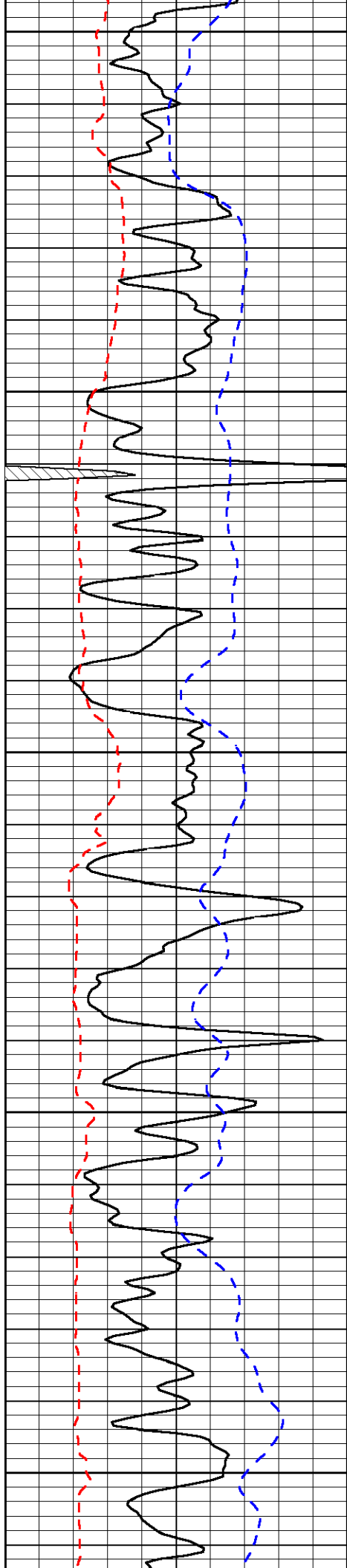


-32

-32

-32

-33



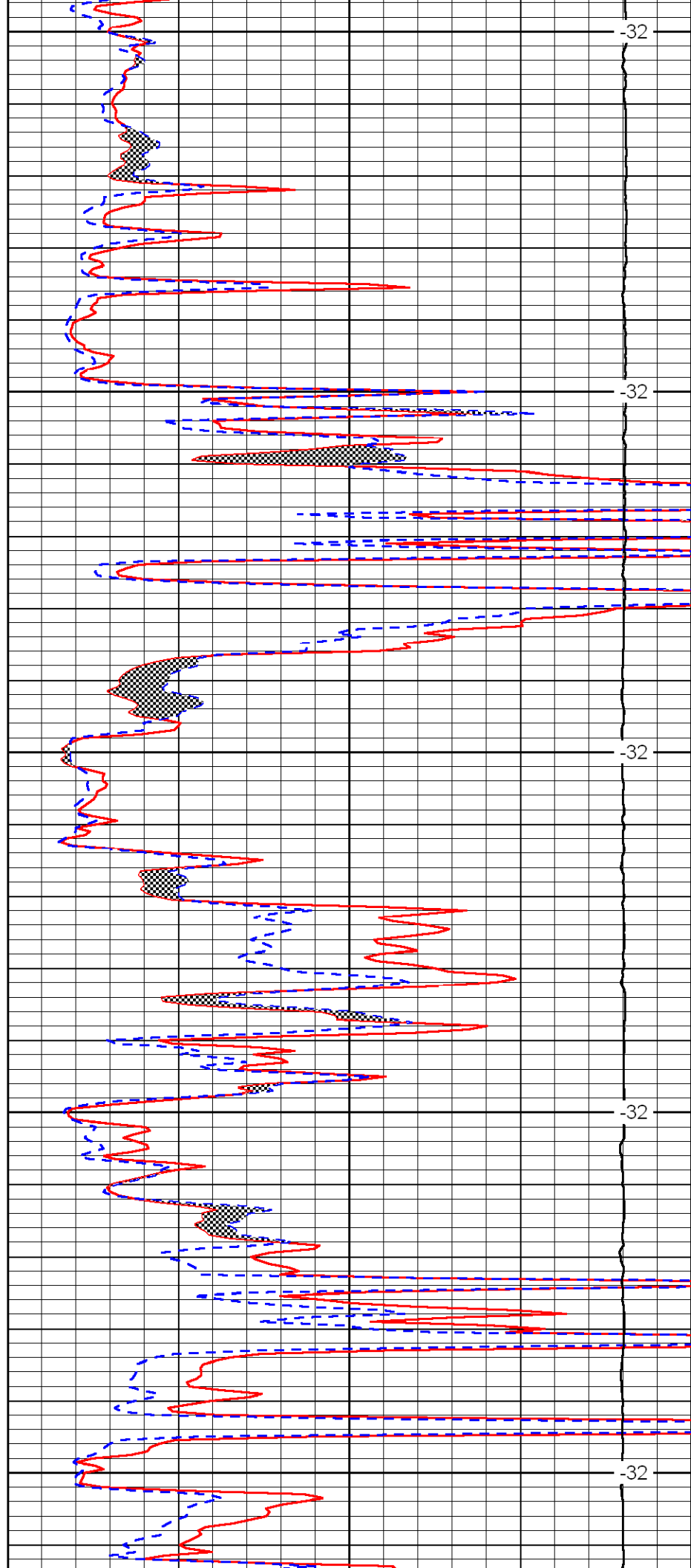
2350

2400

2450

2500

2550



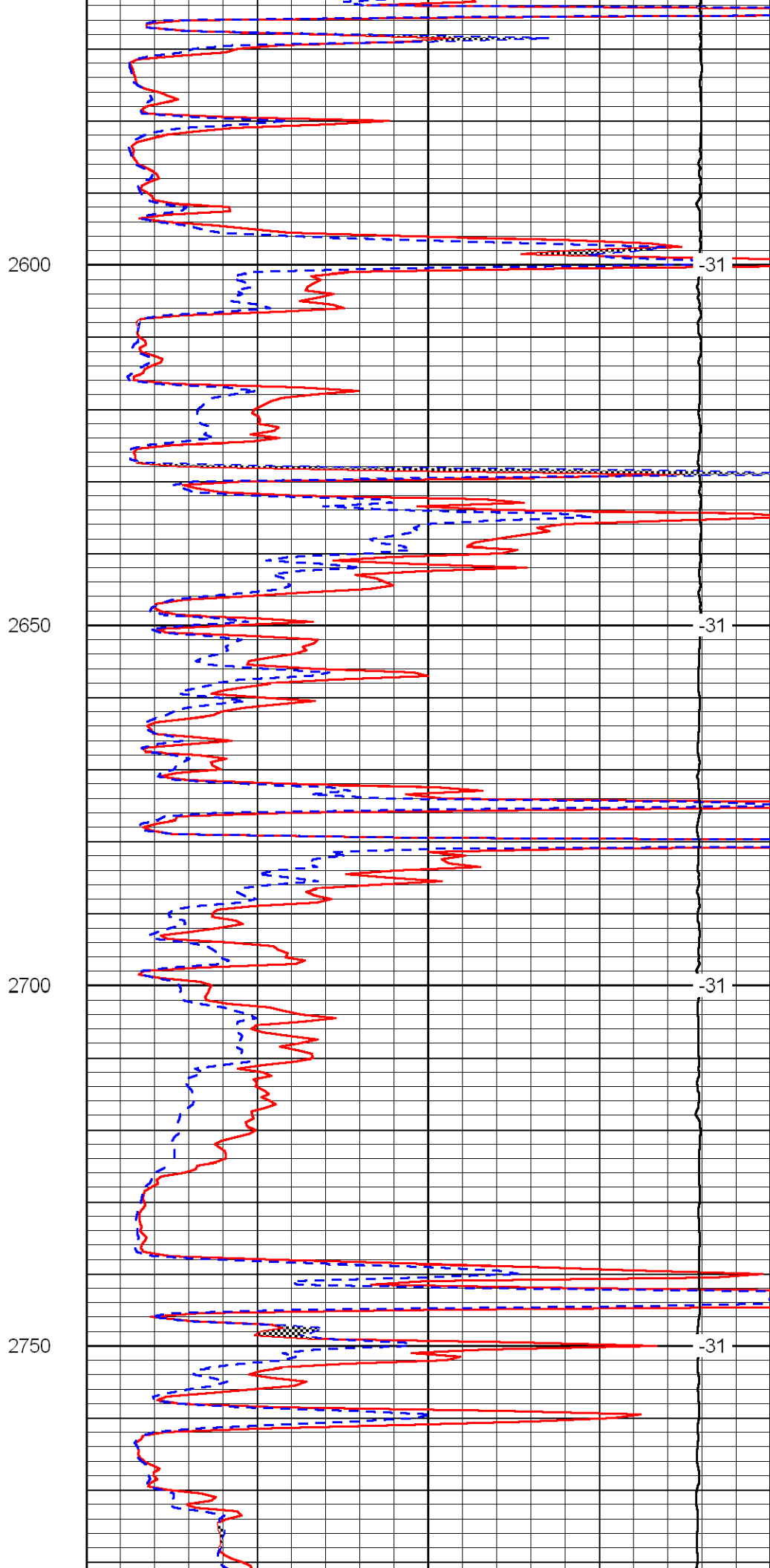
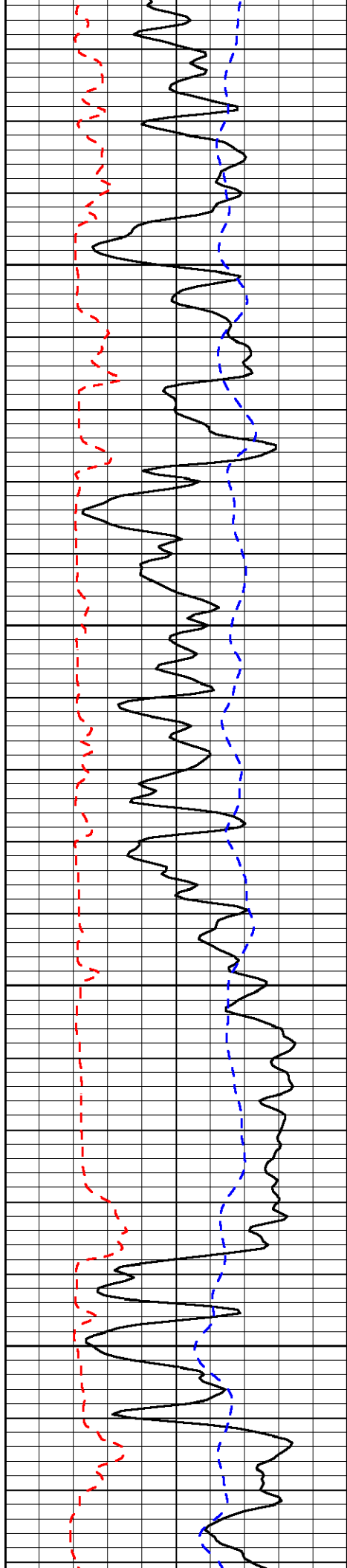
-32

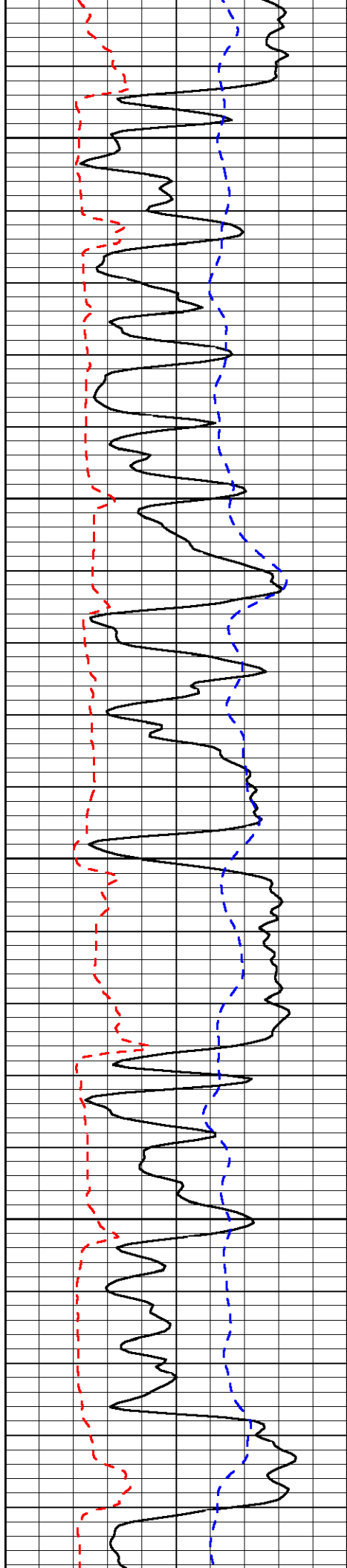
-32

-32

-32

-32



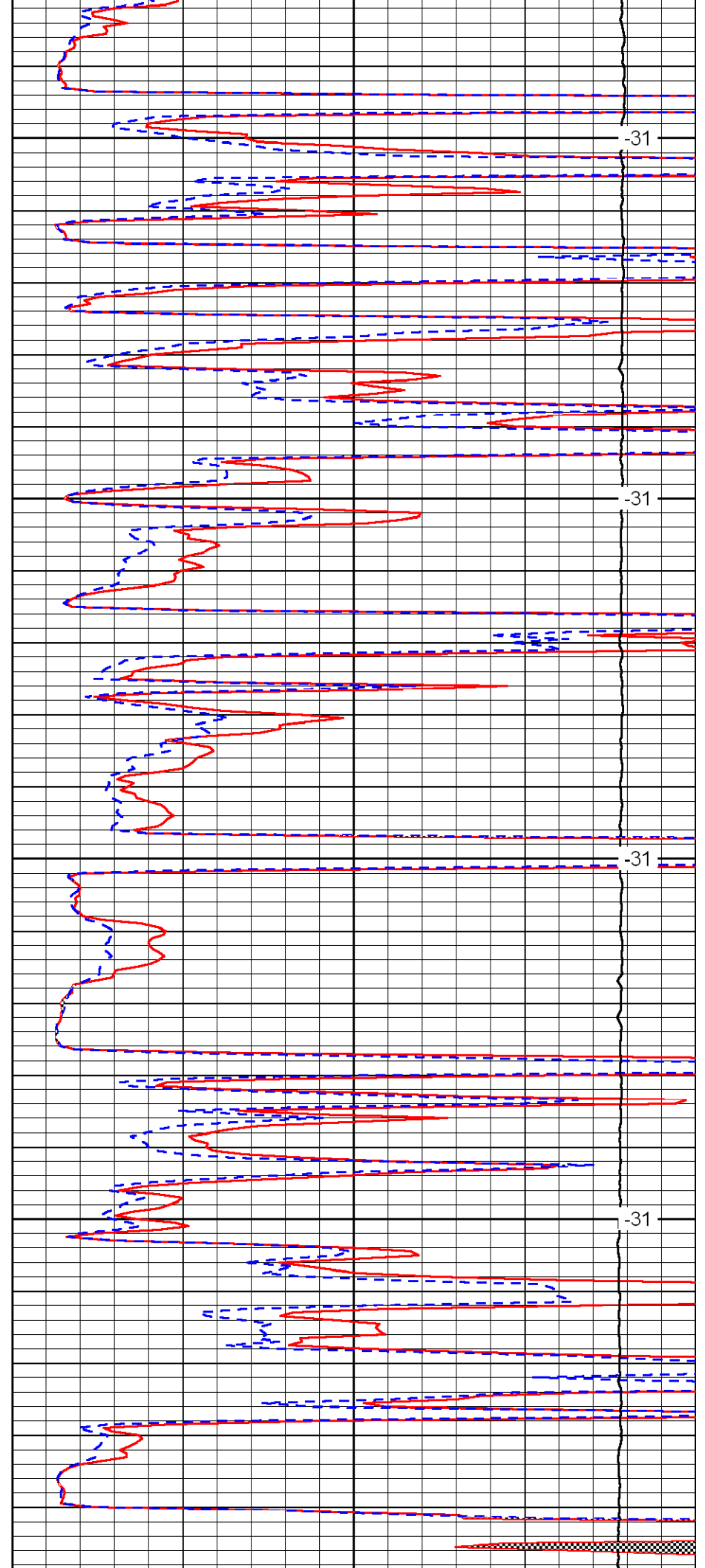


2800

2850

2900

2950



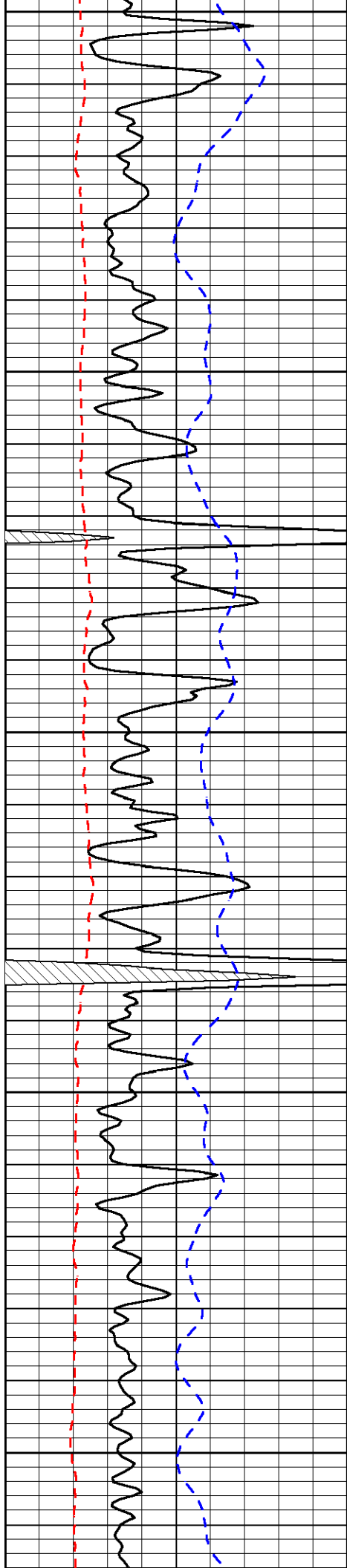
-31

-31

-31

-31





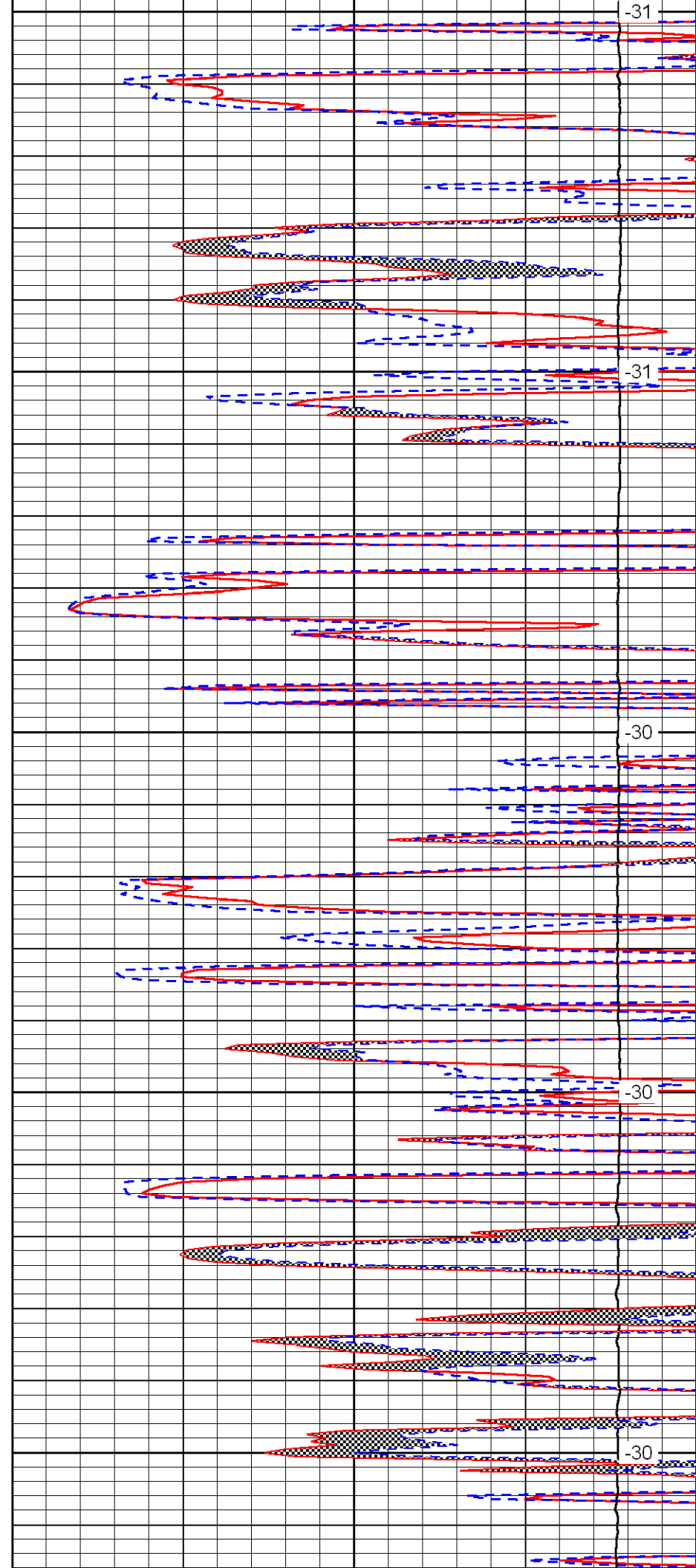
3000

3050

3100

3150

3200



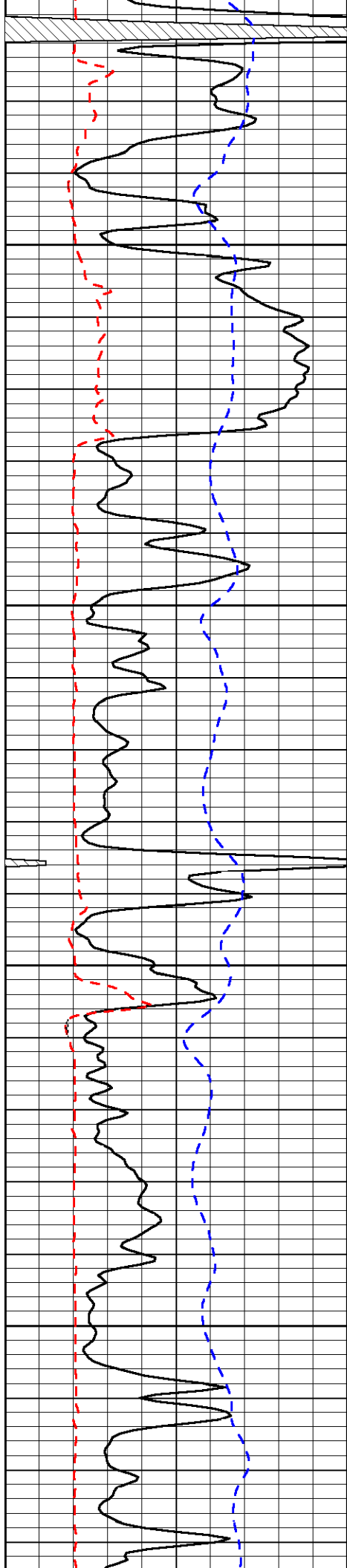
-31

-31

-30

-30

-30

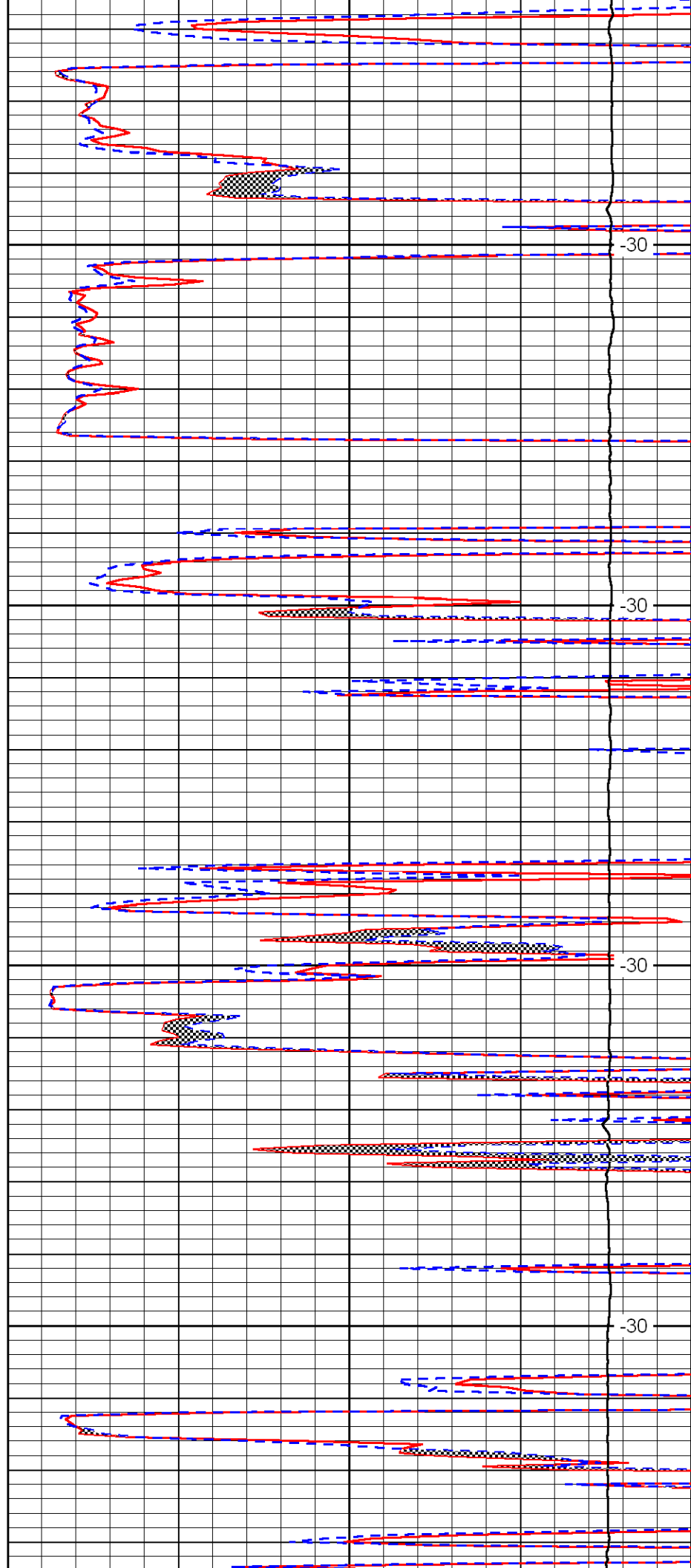


3250

3300

3350

3400

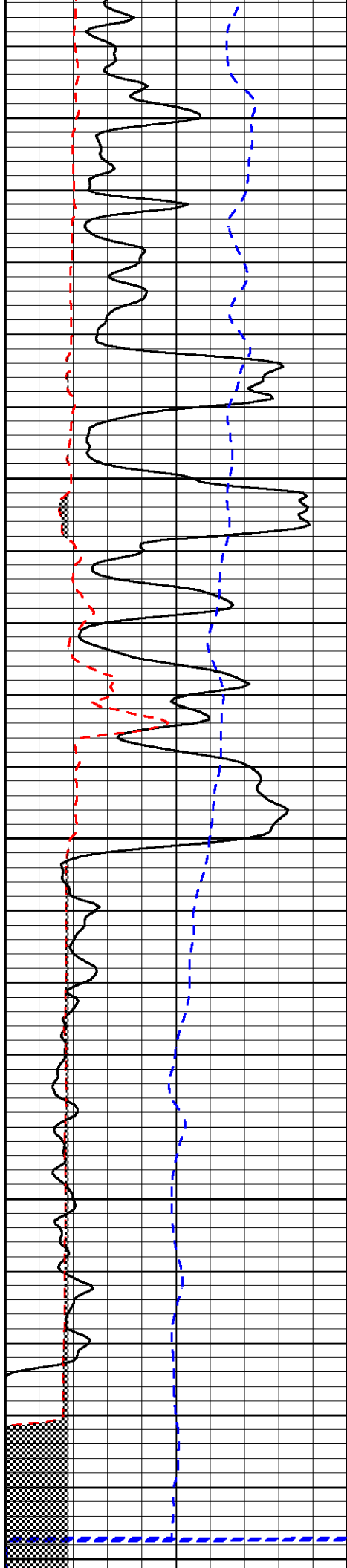


-30

-30

-30

-30



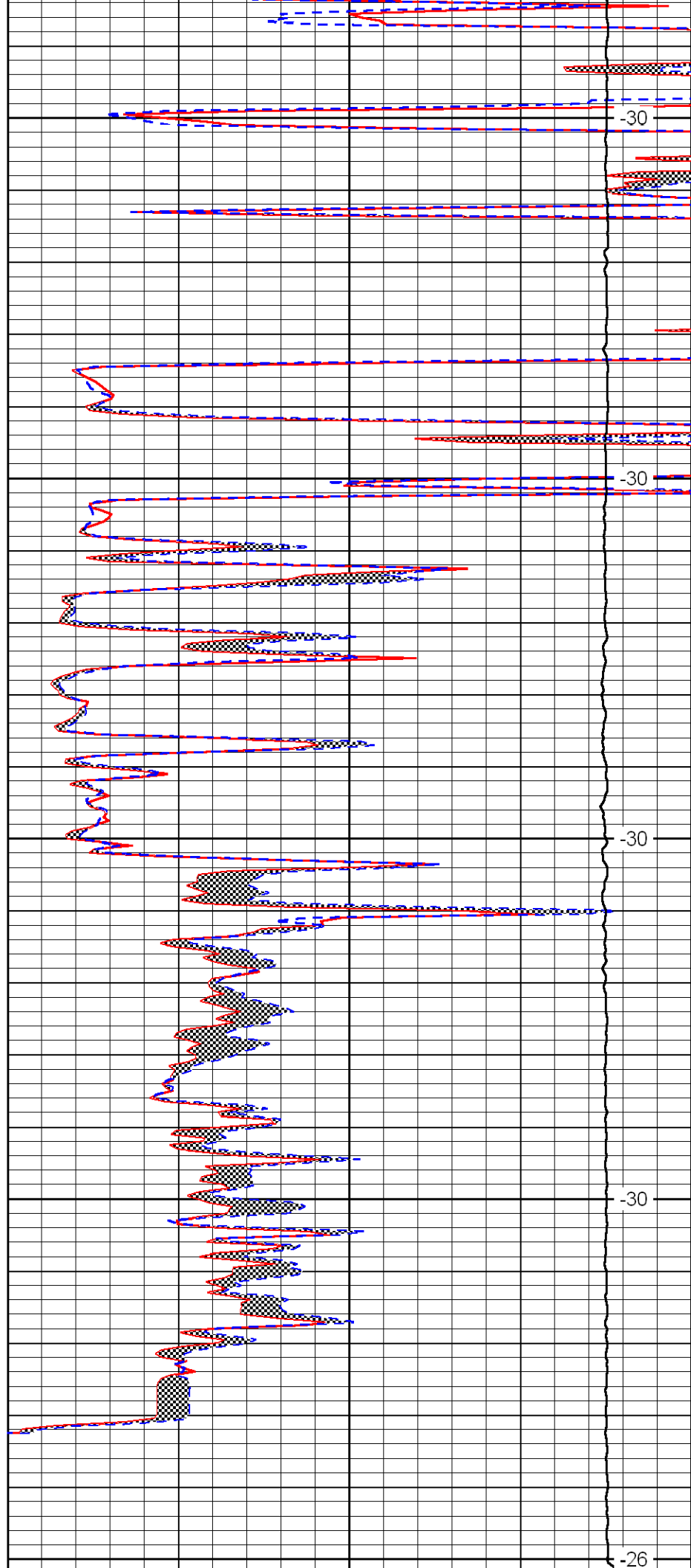
3450

3500

3550

3600

3650



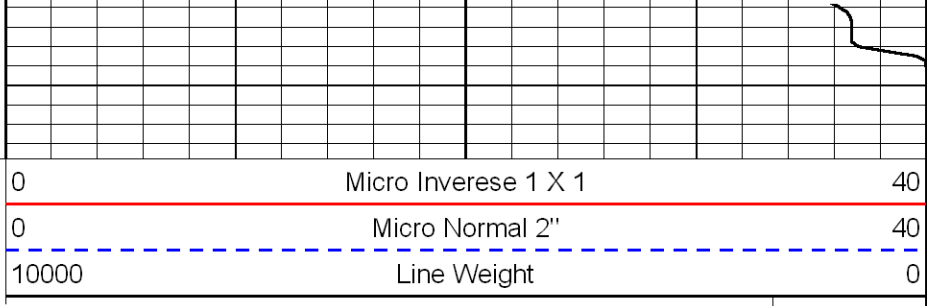
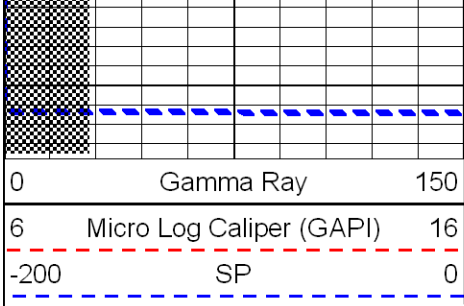
-30

-30

-30

-30

-26

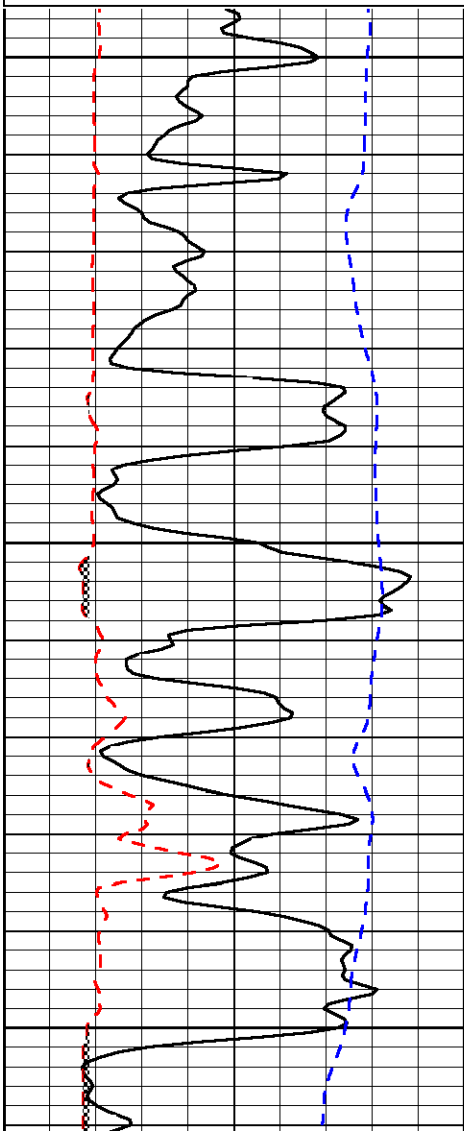
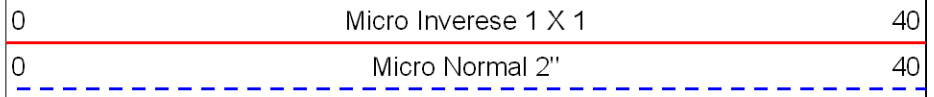
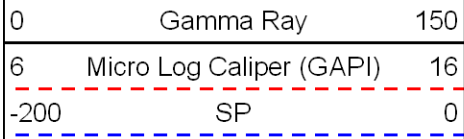


LSPD

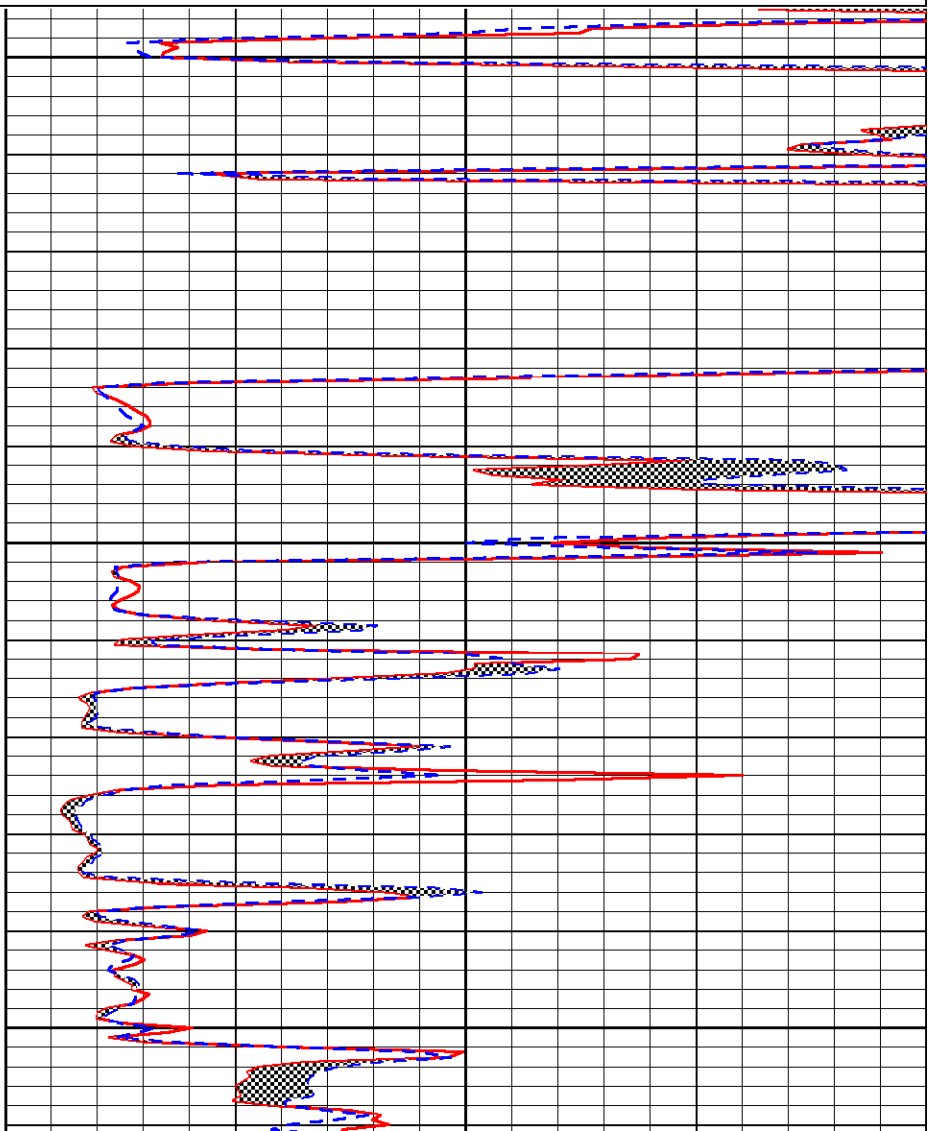


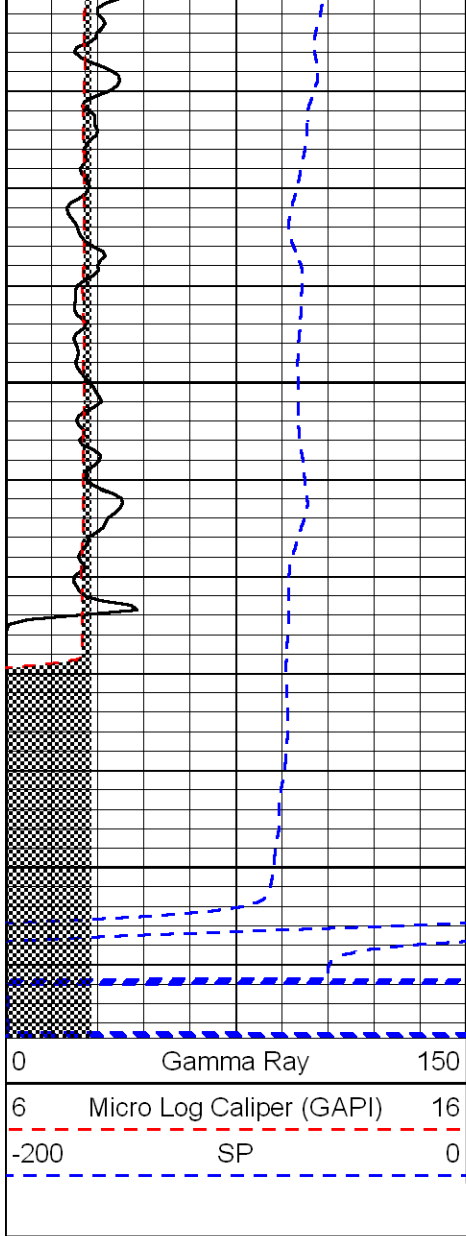
# Repeat Section

Database File: c:\warrior\data\sam gary\_maier - yarmer no. 1-26\samhd.db  
 Dataset Pathname: dil/sgmicorp  
 Presentation Format: micro  
 Dataset Creation: Sat Dec 13 09:10:33 2008  
 Charted by: Depth in Feet scaled 1:240



3450  
3500  
3550





3600

3650

