



**Borehole Compensated
Sonic Log**

DIGITAL LOG (785) 625-3858

API No.	15-165-21,842-00-00	
Company	Samuel Gary Jr. and Assoc., Inc.	
Well	Maier - Yarmer No. 1-26	
Field	Wildcat	
County	Rush	State Kansas
Location	NE NW SW 2475' FSL & 1225' FWL	
Sec: 26	Twp: 16S	Rge: 16W
Permanent Datum	Ground Level	Elevation 1974
Log Measured From	Kelly Bushing	10 Ft. Above Perm. Datum
Drilling Measured From	Kelly Bushing	
		Other Services CNL/CDL MEL/DIL
		Elevation K.B. 1984 D.F. 1974 G.L. 1974

Date	12/13/2008						
Run Number	Two						
Type Log	BHC Sonic						
Depth Driller	3650						
Depth Logger	3651						
Bottom Logged Interval	3640						
Top Logged Interval	1050						
Type Fluid In Hole	Chemical						
Salinity, PPM CL	9,200						
Density	9.4						
Level	Full						
Max. Rec. Temp. F	115						
Operating Rig Time	5 Hours						
Equipment -- Location	10	Hays					
Recorded By	Jason Wellbrock						
Witnessed By	Justin Carter						
Borehole Record							
Run No	Bit	From	To	Size	Wgt.	From	To
1	12.25	00	1063	8.625	24#	00	1063
2	7.875	1063	3650				
Casing Record							

<<< Fold Here >>>

All interpretations are opinions based on inferences from electrical or other measurements and we cannot and do not guarantee the accuracy or correctness of any interpretation, and we shall not, except in the case of gross or willful negligence on our part, be liable or responsible for any loss, costs, damages, or expenses incurred or sustained by anyone resulting from any interpretation made by any of our officers, agents or employees. These interpretations are also subject to our general terms and conditions set out in our current Price Schedule.

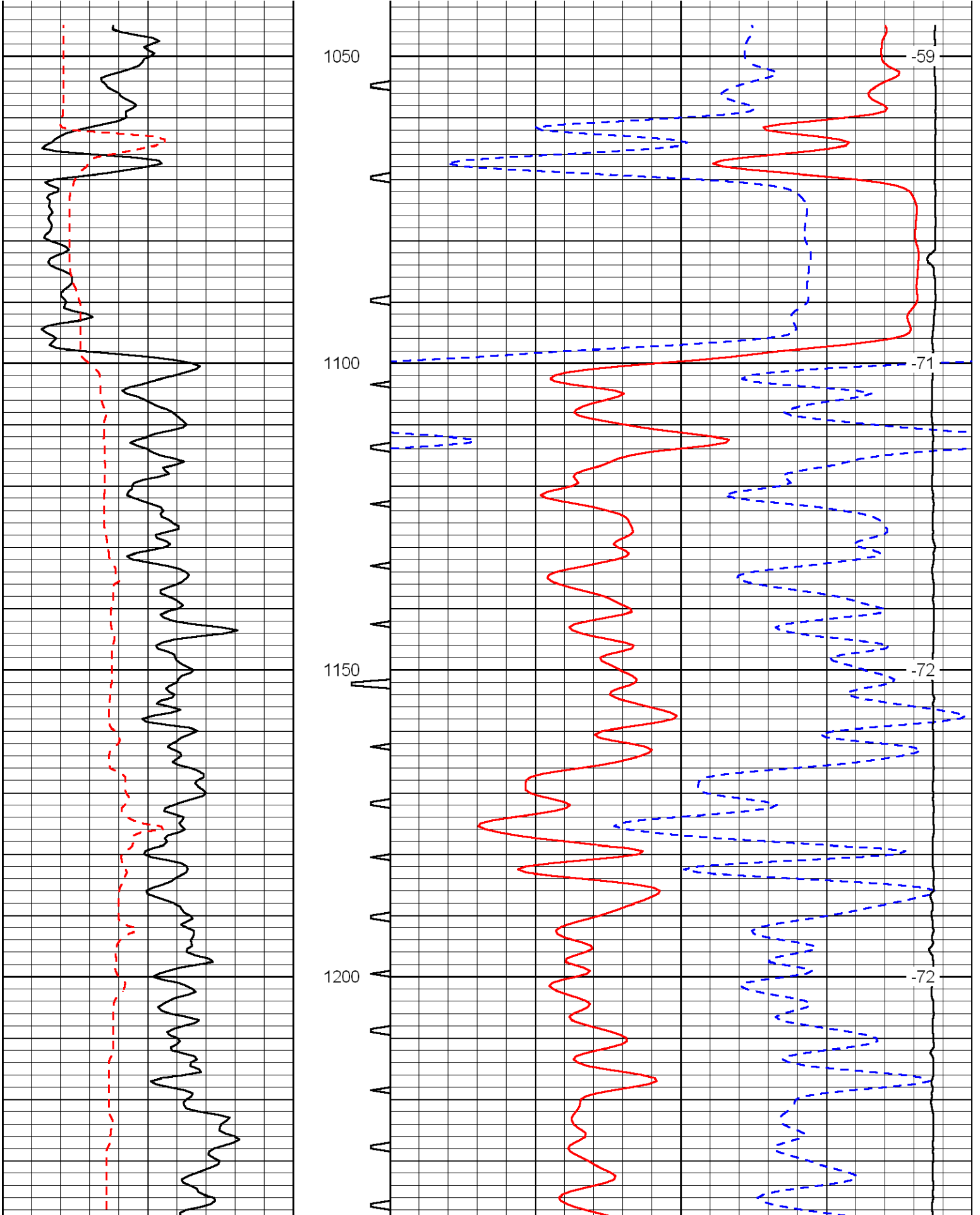
Comments

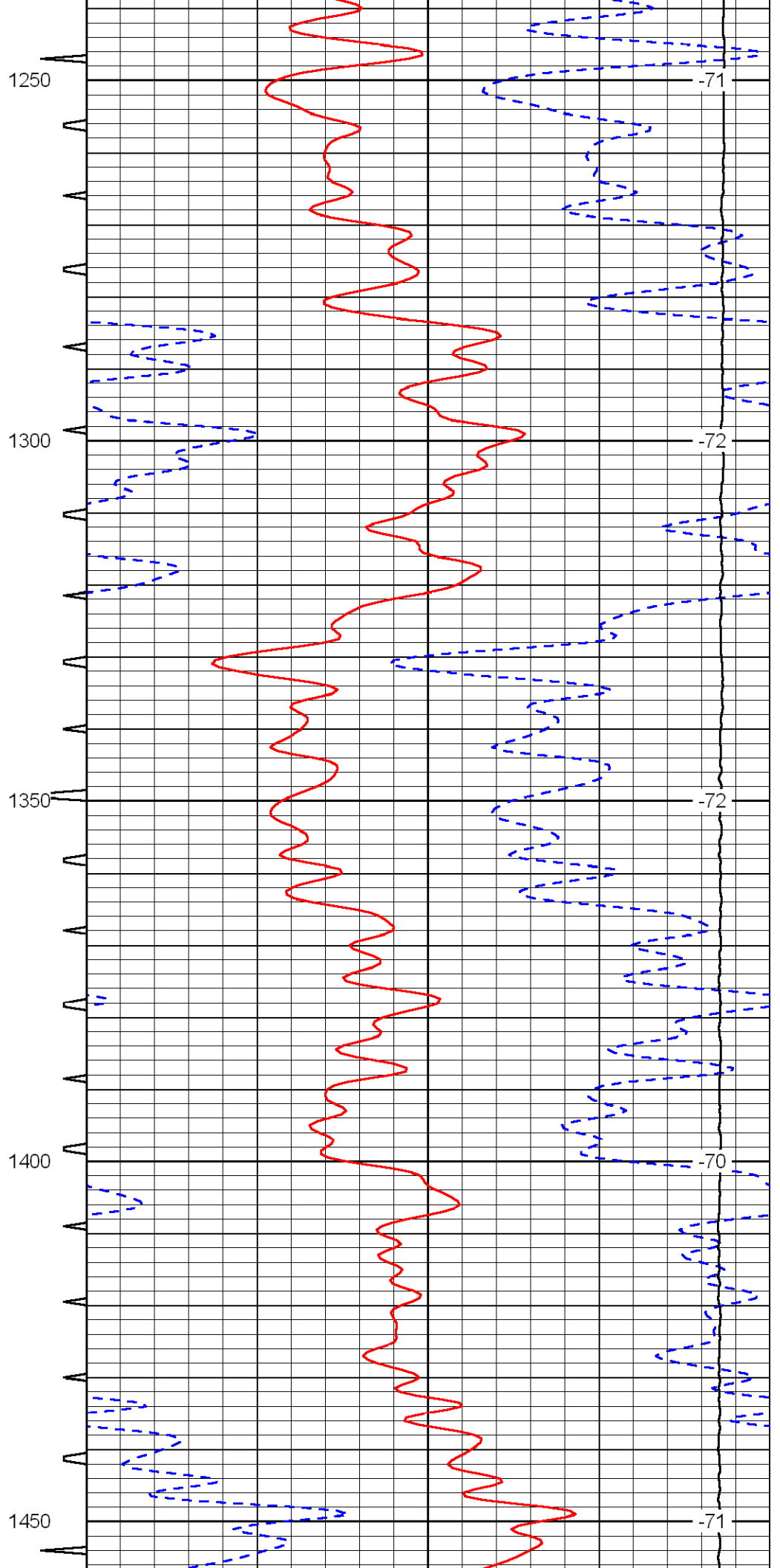
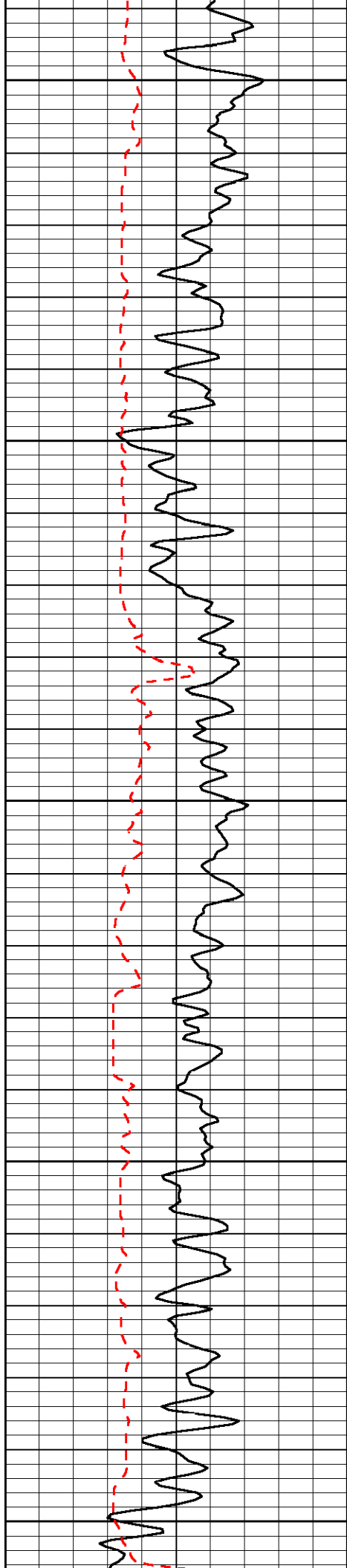
Thank you for using Log-Tech, Inc.
(785) 625-3858

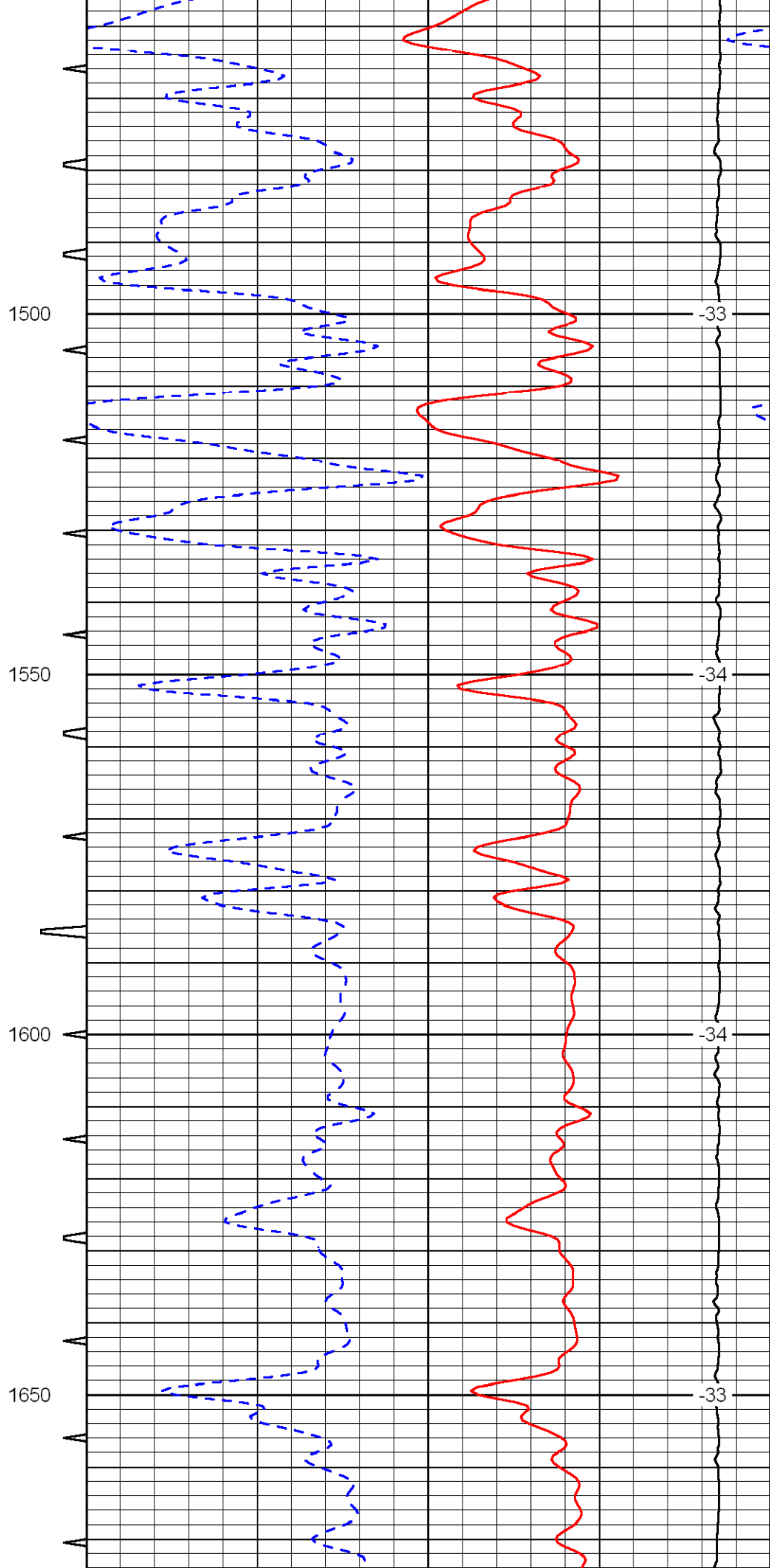
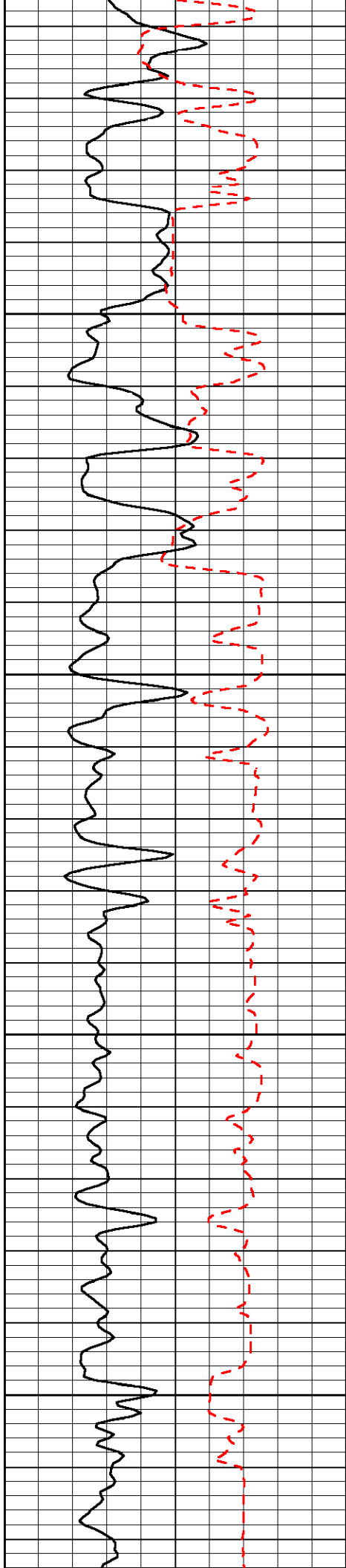
Otis 9 N, 1/2 W, 1/2 N, S Into

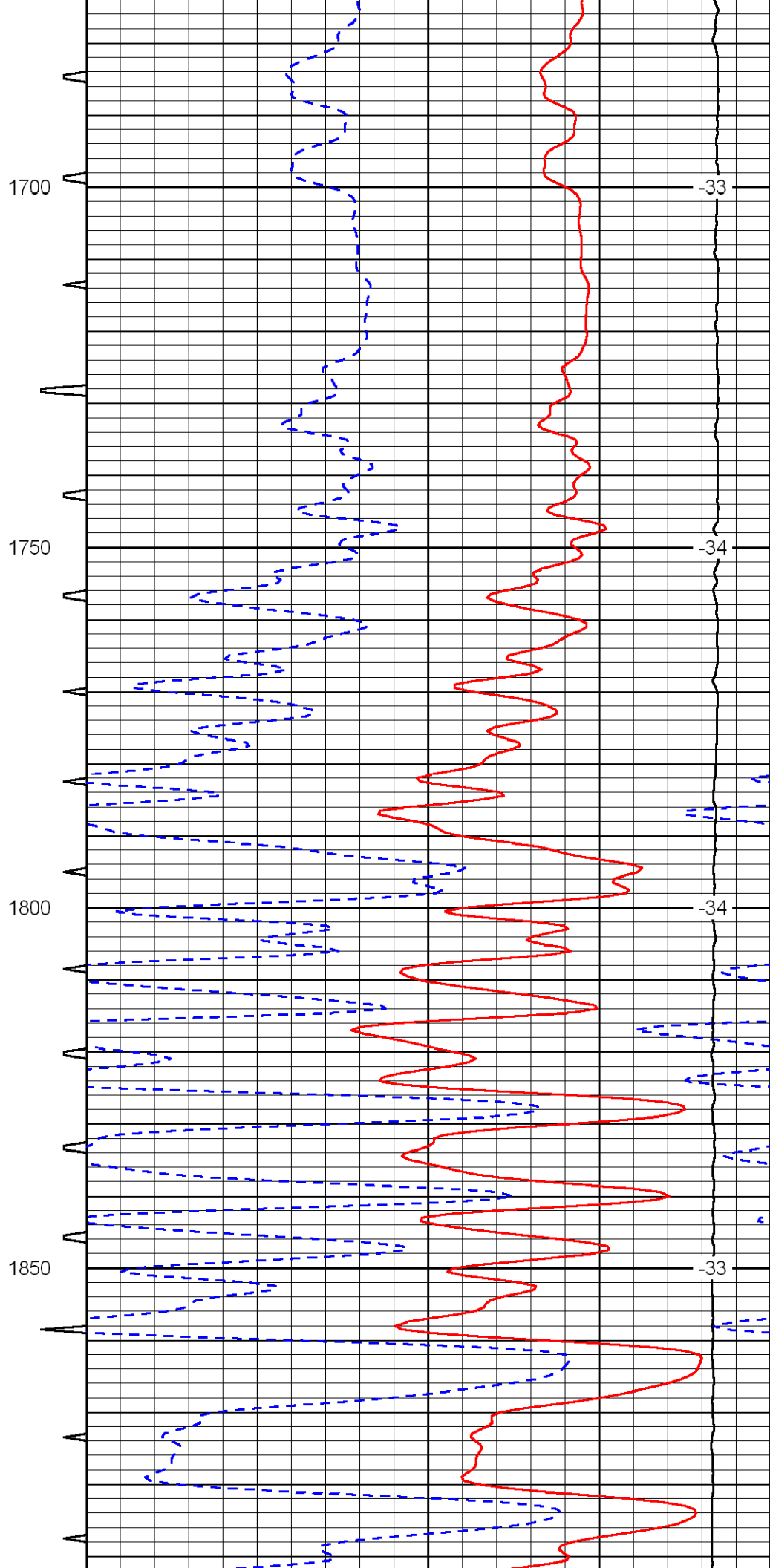
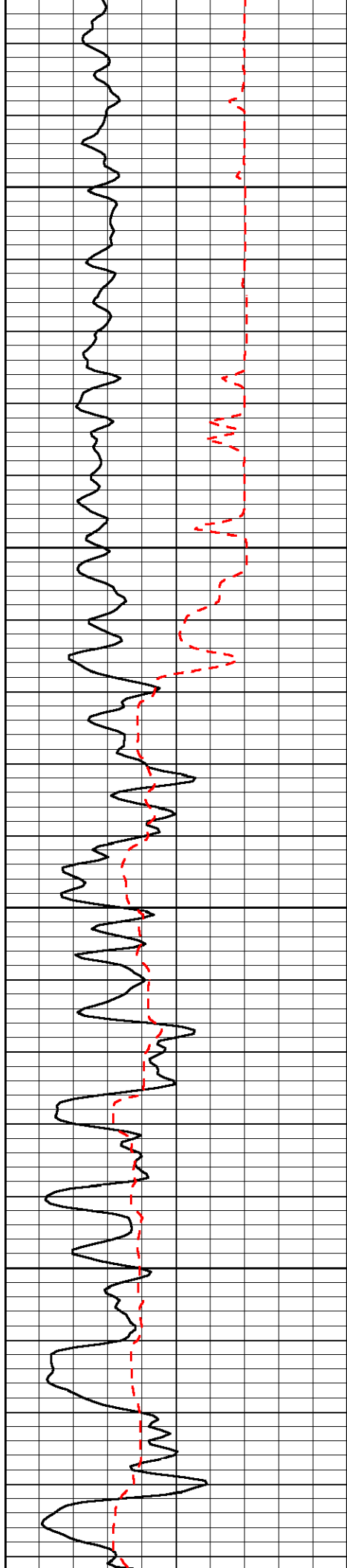
Database File: c:\warrior\data\sam gary_maier - yarmer no. 1-26\samhd.db
 Dataset Pathname: dil\sam2in
 Presentation Format: sonic
 Dataset Creation: Sat Dec 13 07:14:08 2008
 Charted by: Depth in Feet scaled 1:240

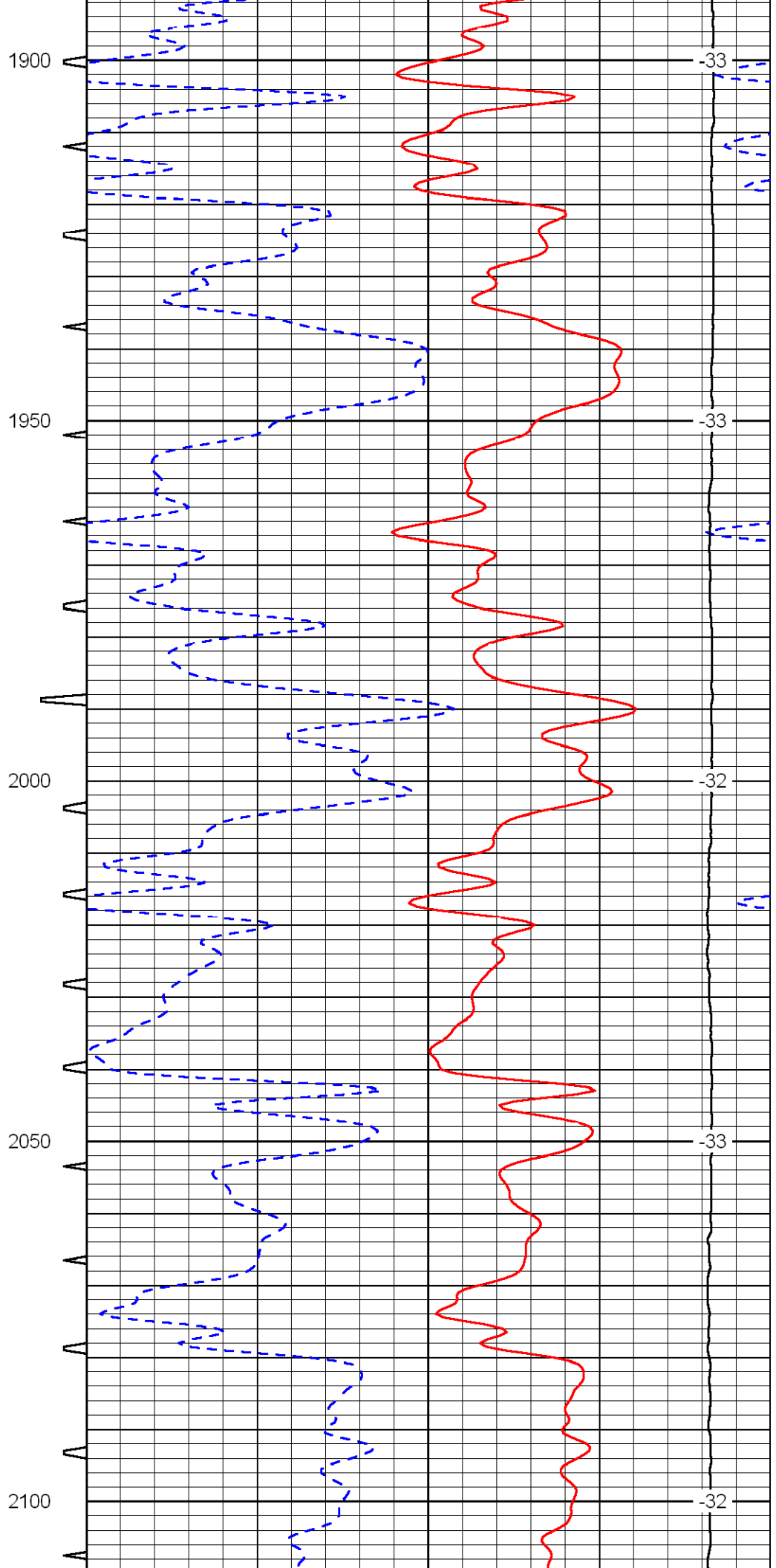
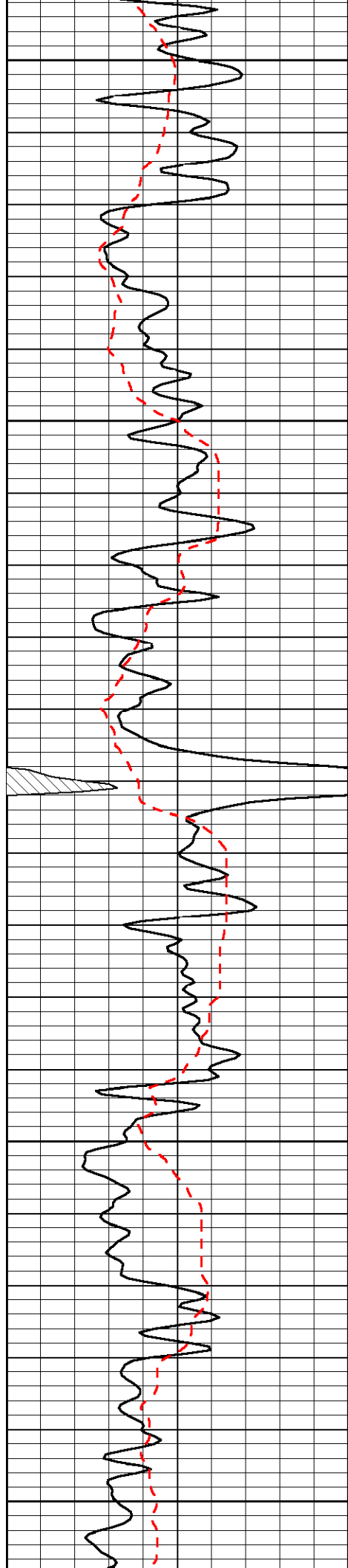
0	Gamma Ray	150	Sonic Int	140	Delta Time (usec/ft)	40
150	Gamma Ray	300	5	0	SPOR	-10
6	Caliper (GAPI)	16		10000	LTEN (lb)	0
						LSPD

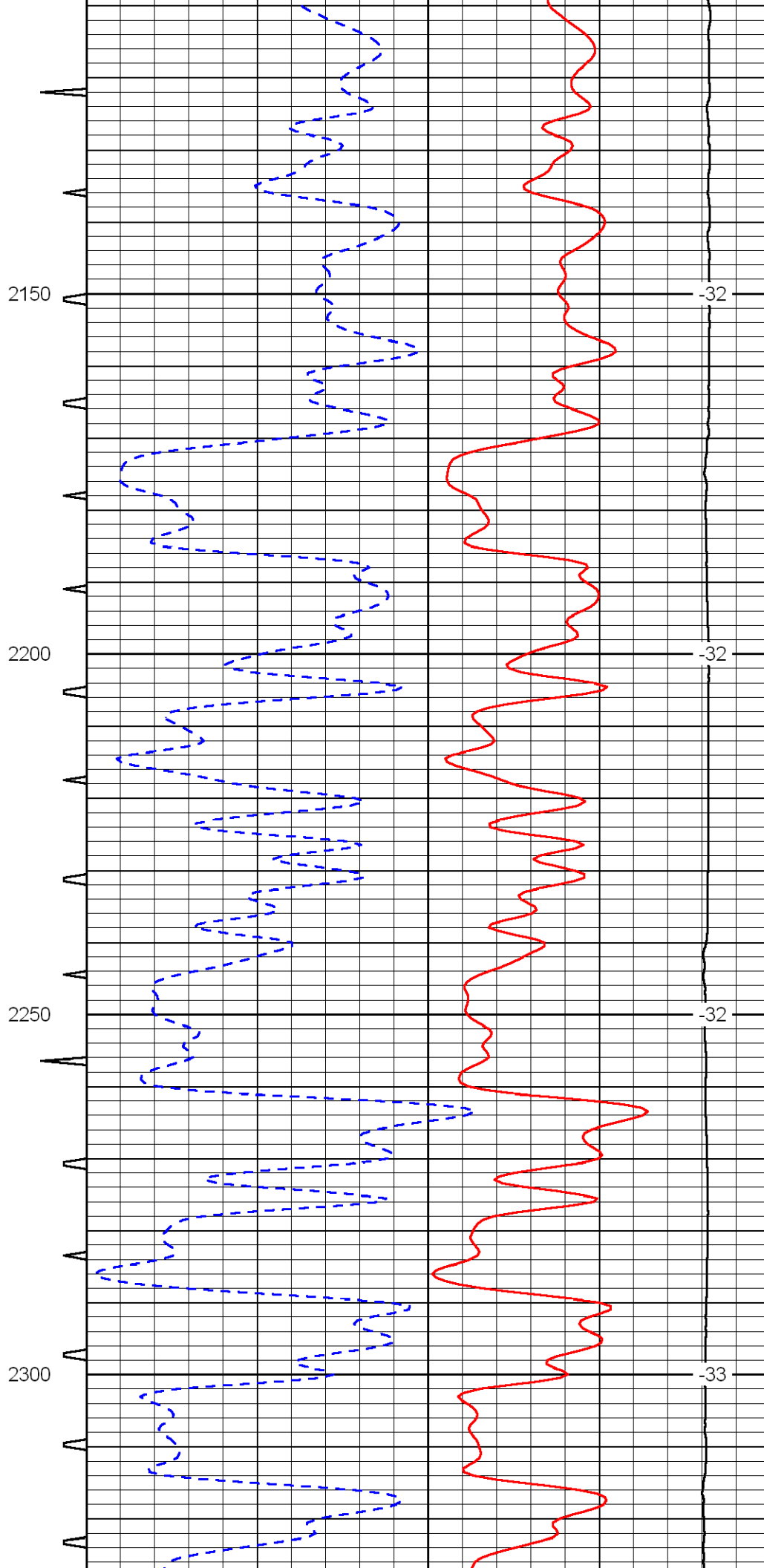
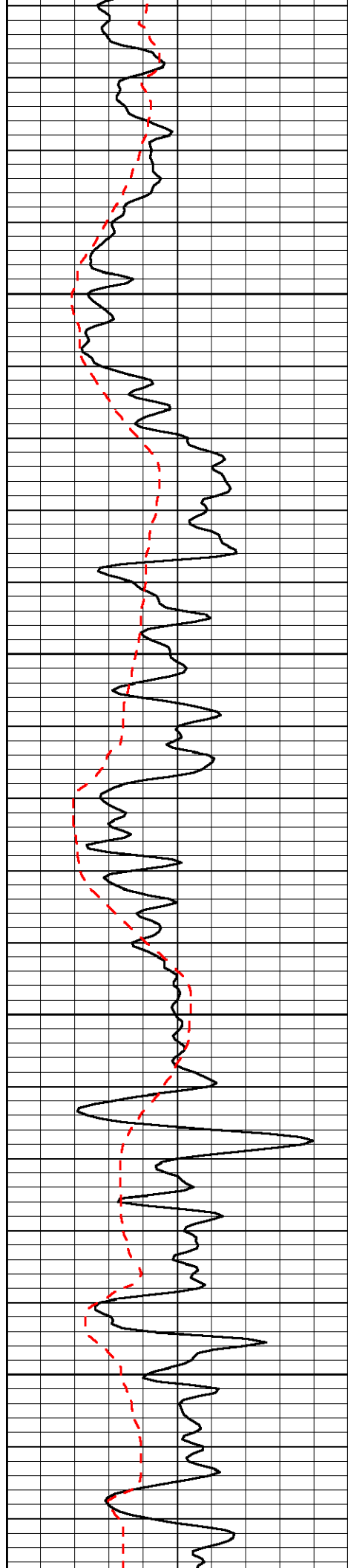


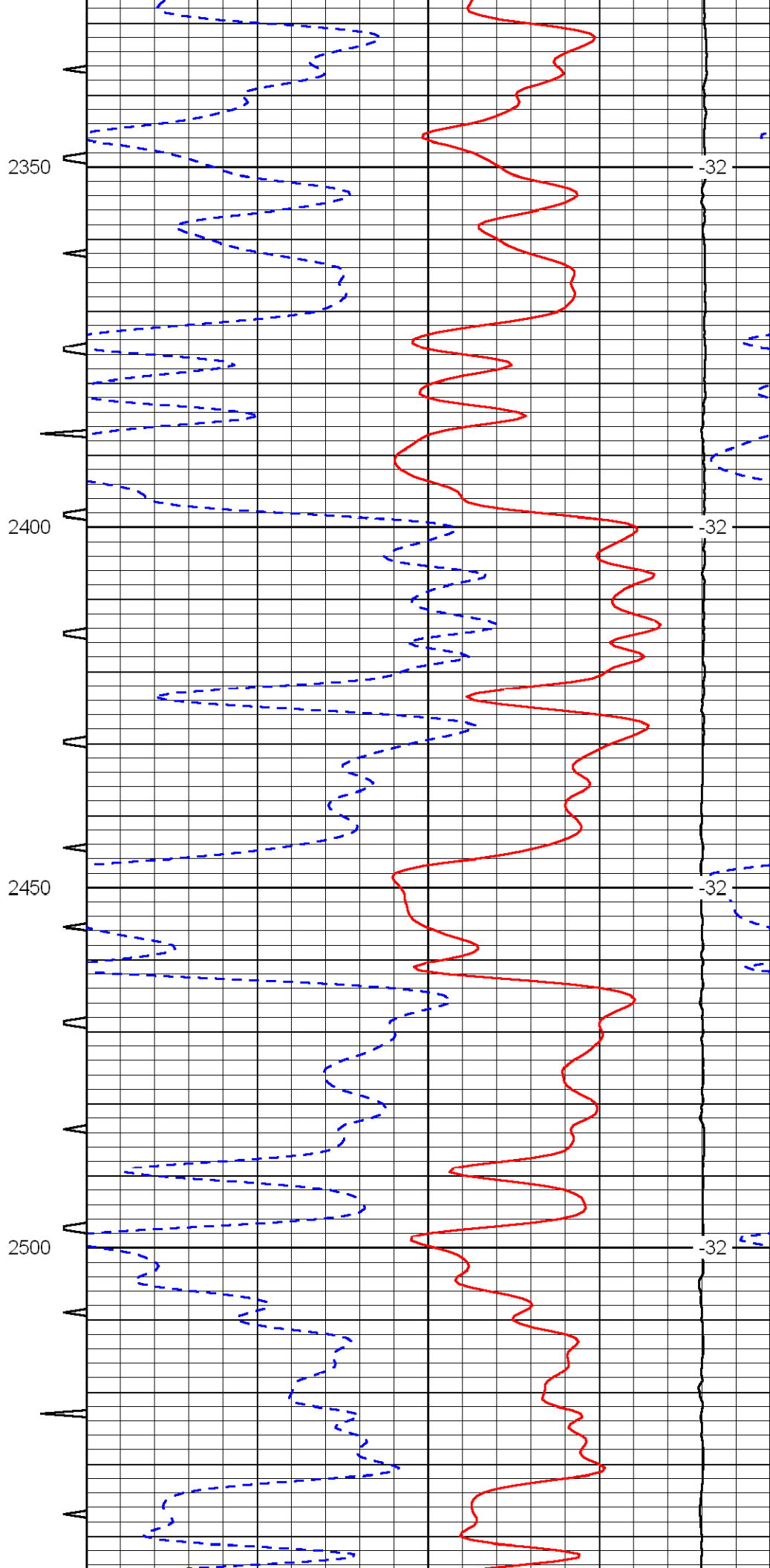
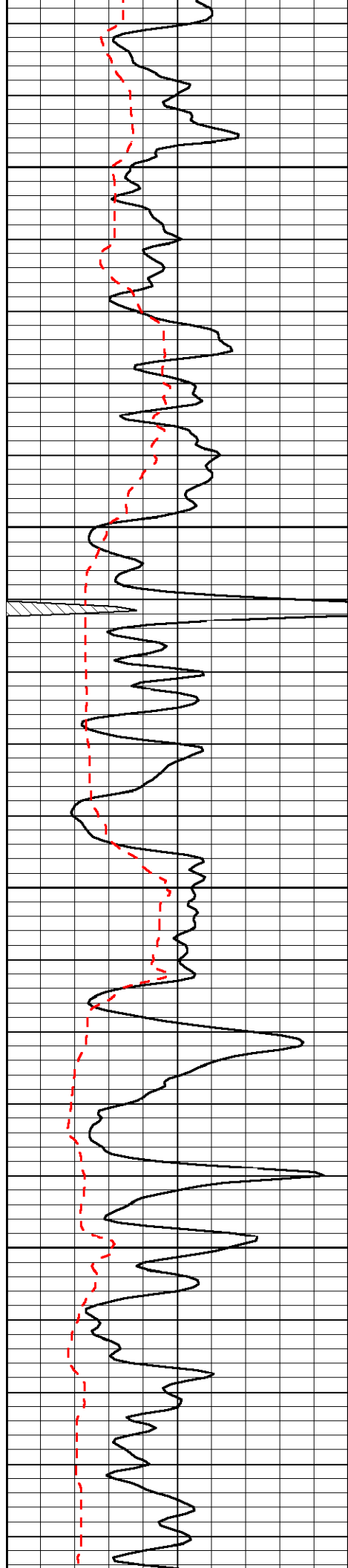


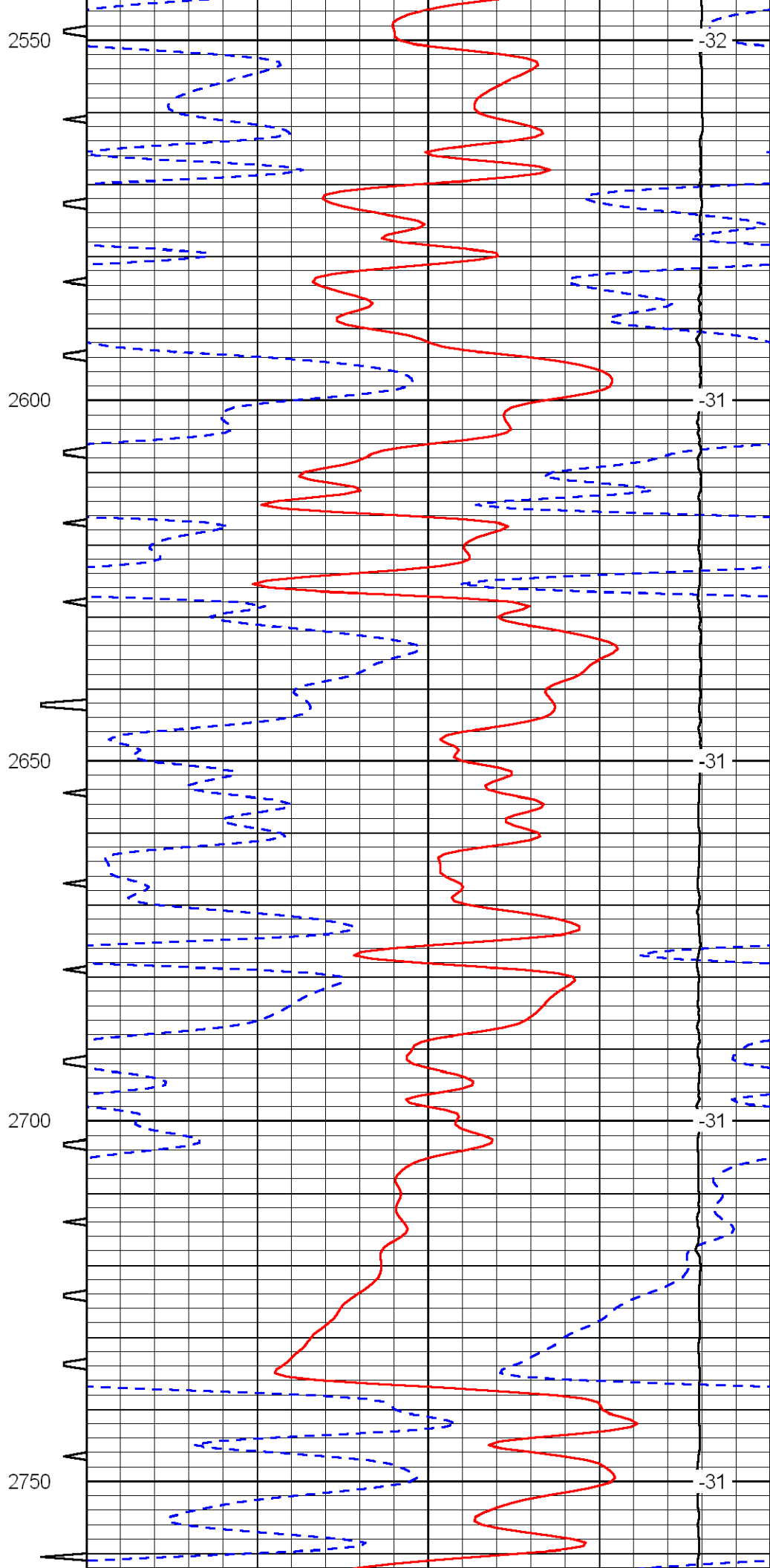
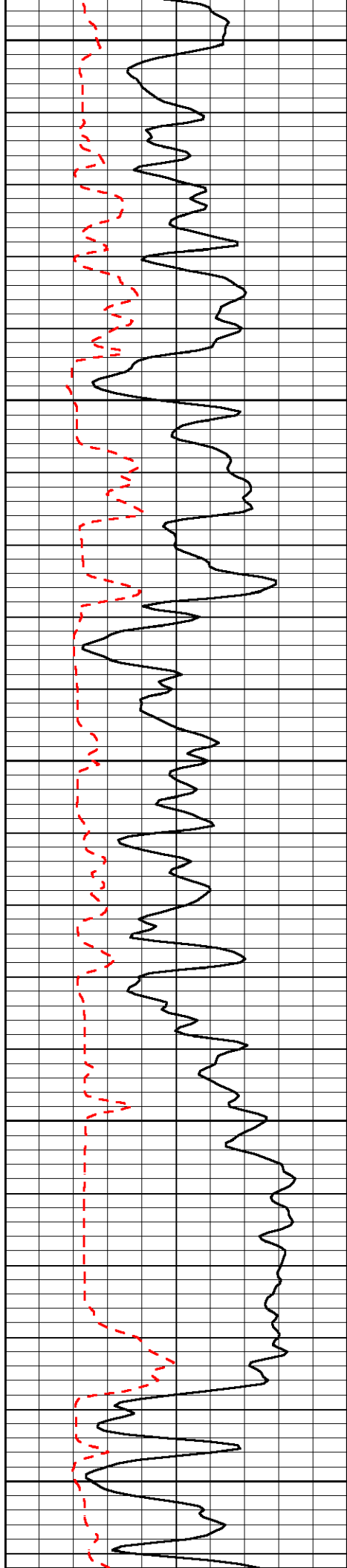


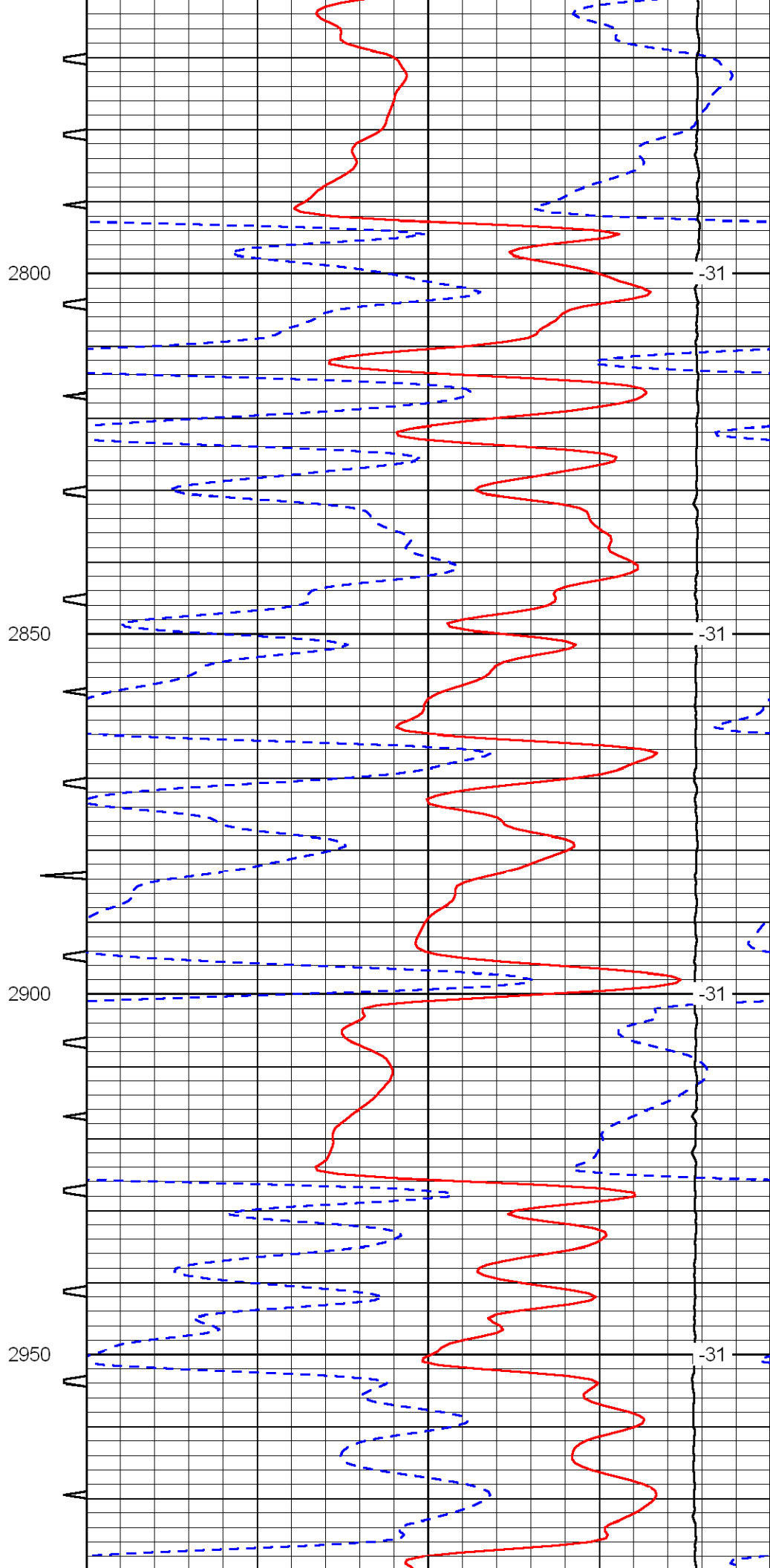
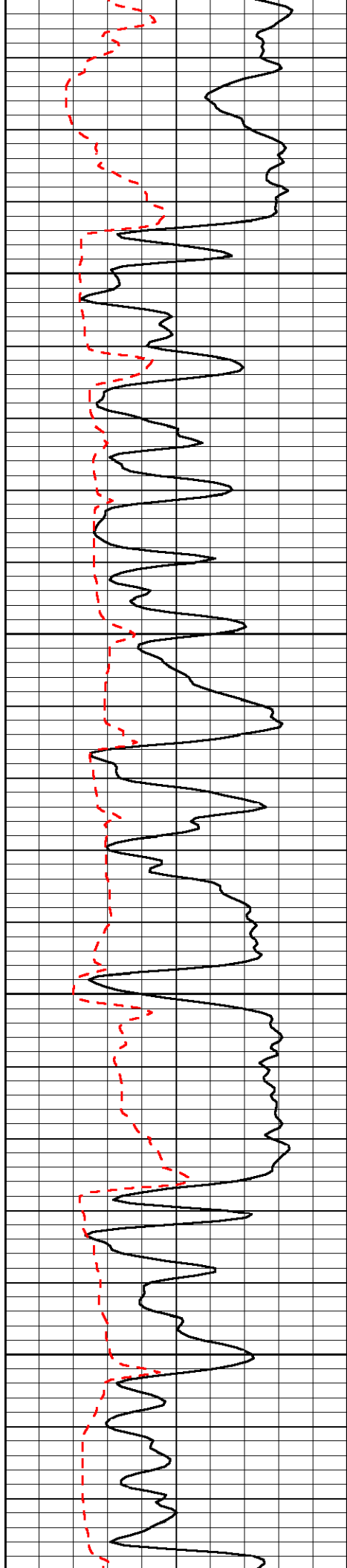


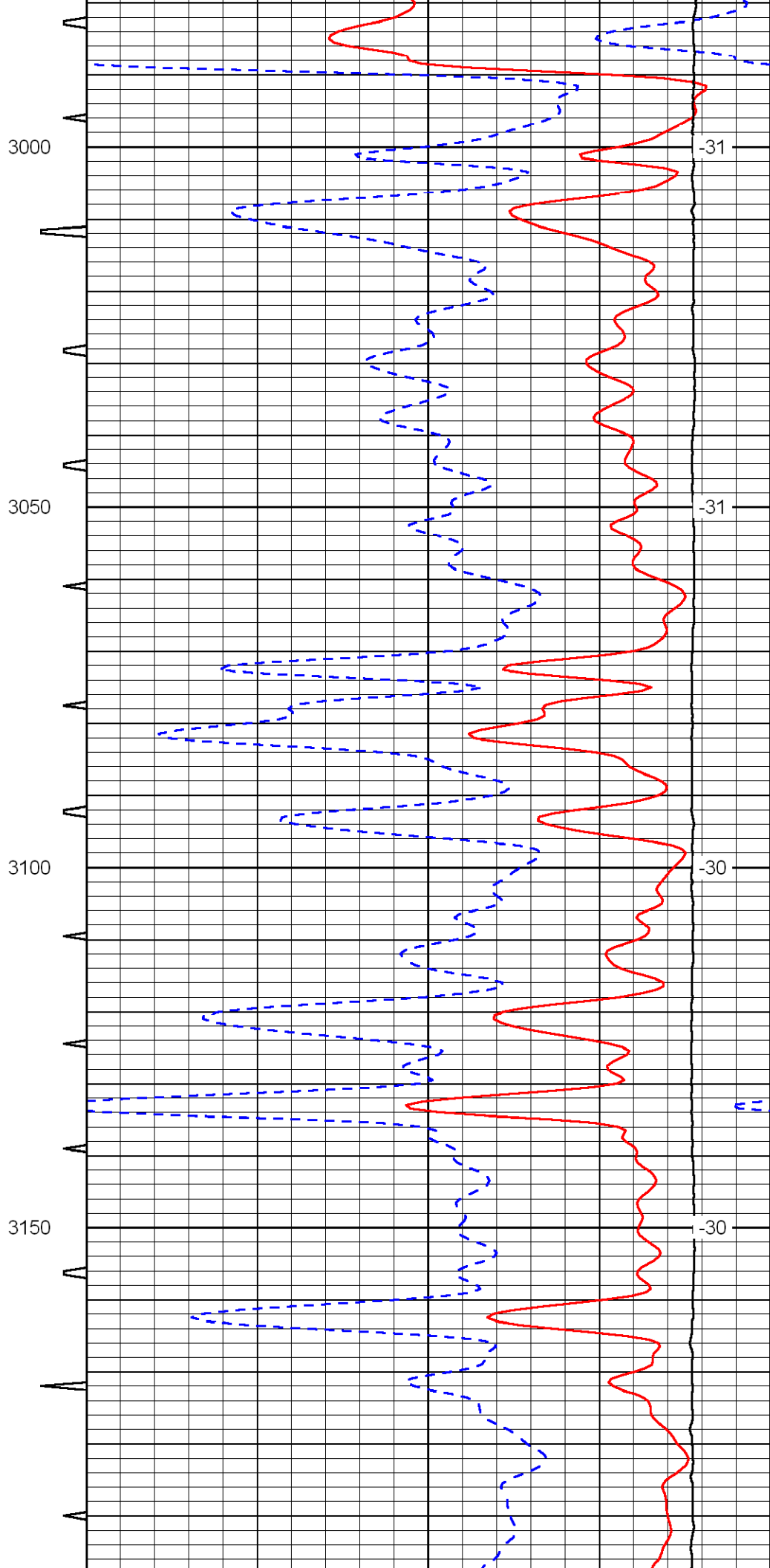
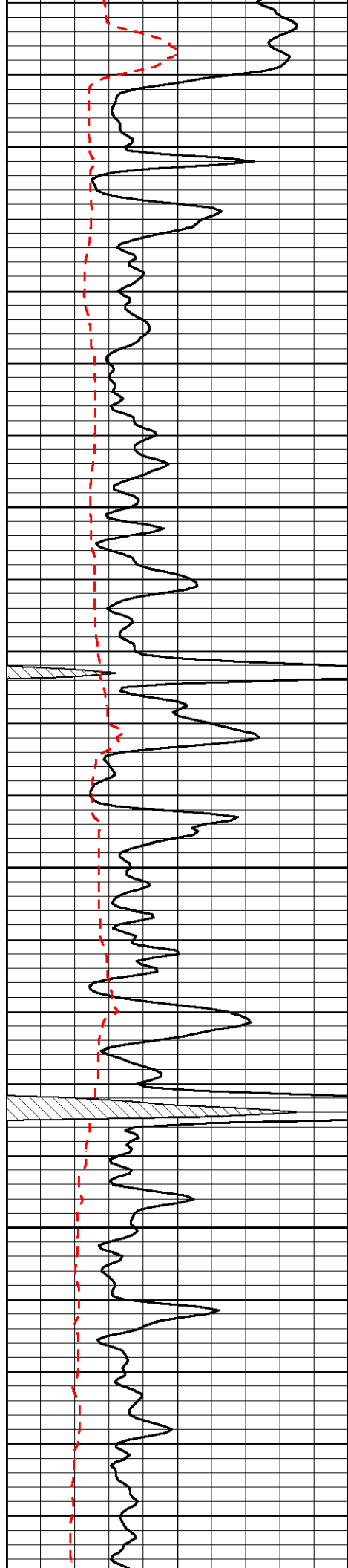


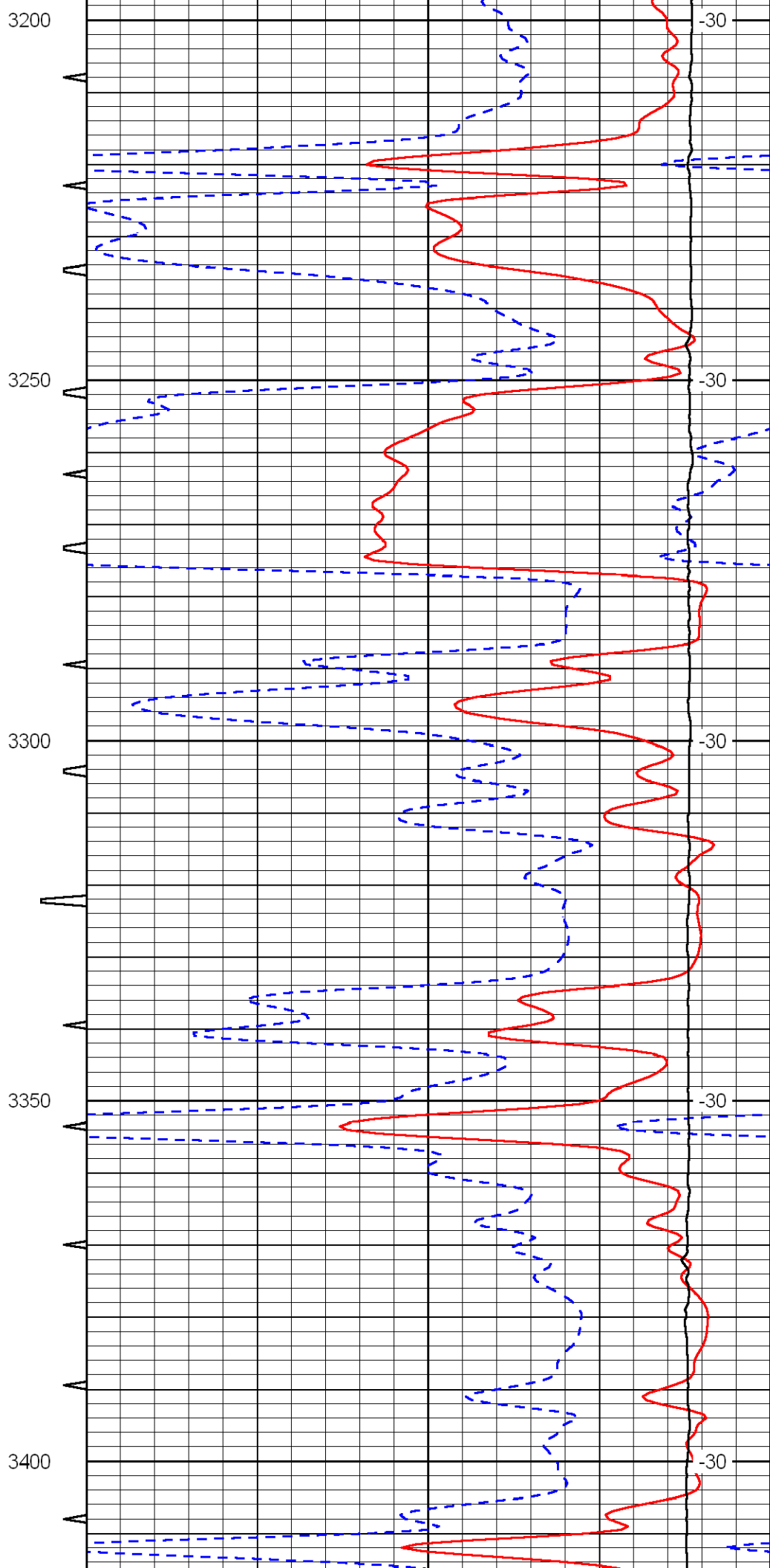
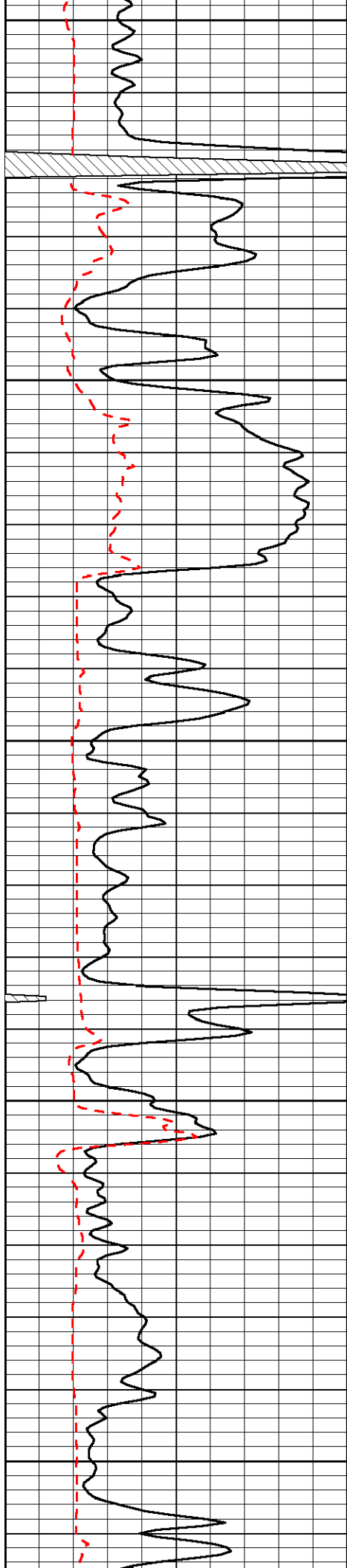


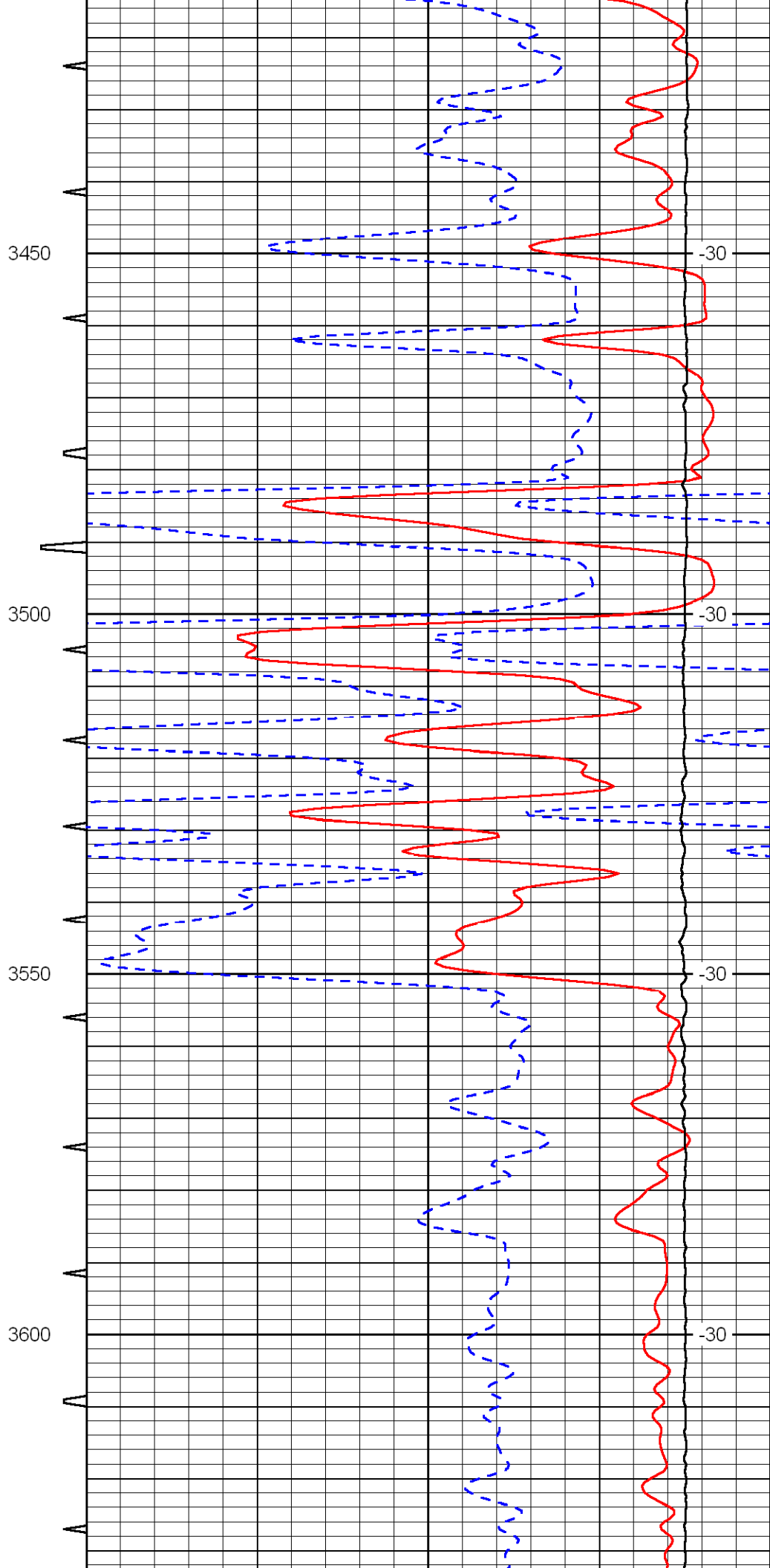
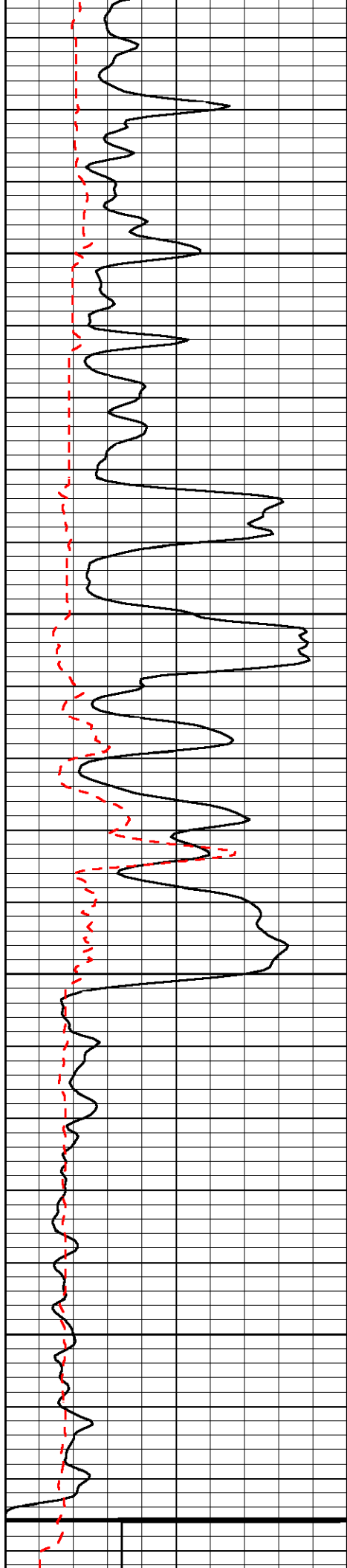


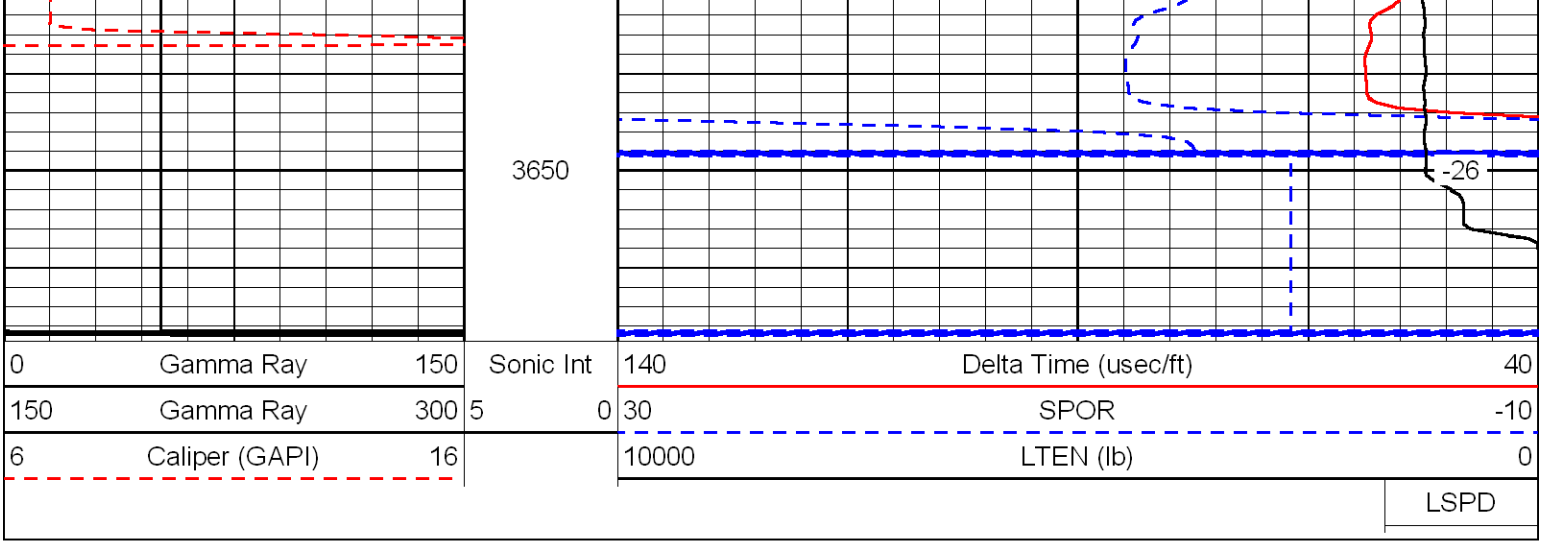












0	Gamma Ray	150
150	Gamma Ray	300
6	Caliper (GAPI)	16

Sonic Int	140	Delta Time (usec/ft)	40
5	0	SPOR	-10
	30	LTEN (lb)	0
	10000		

LSPD