



Dual Compensated Porosity Log

DIGITAL LOG (785) 625-3858

API No. 15-165-21,842-00-00

Company **Samuel Gary Jr. and Assoc., Inc.**
 Well **Maier - Yarmer No. 1-26**
 Field **Wildcat**
 County **Rush** State **Kansas**

Location **NE NW SW
2475' FSL & 1225' FWL**

Sec: **26** Twp: **16S** Rge: **16W**

Other Services
DIL
MEL/BHCS

Permanent Datum **Ground Level** Elevation **1974**
 Log Measured From **Kelly Bushing** 10 Ft. Above Perm. Datum
 Drilling Measured From **Kelly Bushing**

K.B. 1984
 D.F. 1974
 G.L. 1974

Date **12/13/2008**

Run Number **One**

Type Log **CNL / CDL**

Depth Driller **3650**

Depth Logger **3651**

Bottom Logged Interval **3630**

Top Logged Interval **1500**

Type Fluid In Hole **Chemical**

Salinity, PPM CL **9,200**

Density **9.4**

Level **Full**

Max. Rec. Temp. F **115**

Operating Rig Time **5 Hours**

Equipment -- Location **10 Hays**

Recorded By **Jason Wallbrock**

Witnessed By **Justin Carter**

Borehole Record				Casing Record			
Run No	Bit	From	To	Size	Wgt.	From	To
1	12.25	00	1063	8.625	24#	00	1063
2	7.875	1063	3650				

<<< Fold Here >>>

All interpretations are opinions based on inferences from electrical or other measurements and we cannot and do not guarantee the accuracy or correctness of any interpretation, and we shall not, except in the case of gross or willful negligence on our part, be liable or responsible for any loss, costs, damages, or expenses incurred or sustained by anyone resulting from any interpretation made by any of our officers, agents or employees. These interpretations are also subject to our general terms and conditions set out in our current Price Schedule.

Comments

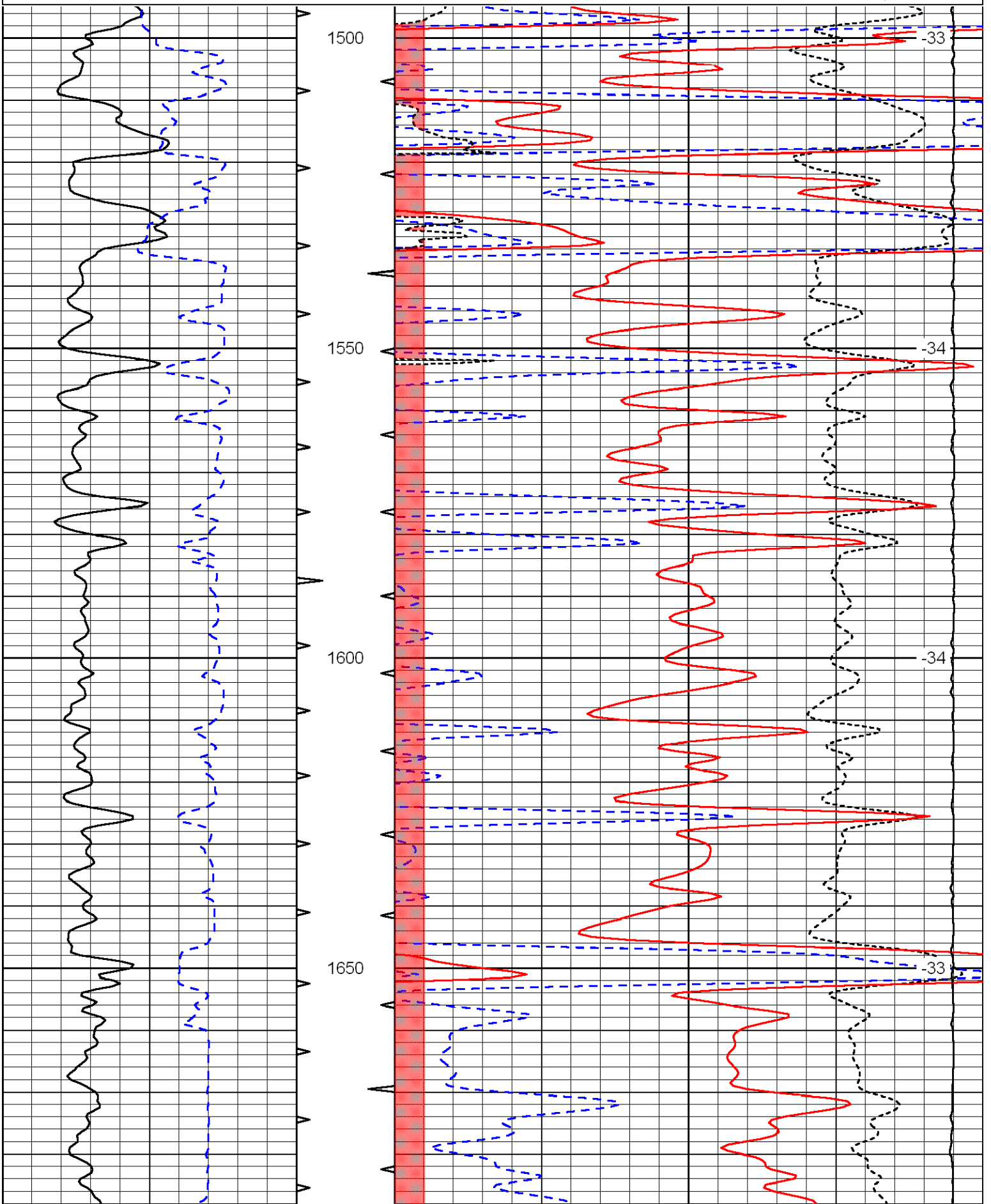
Thank you for using Log-Tech, Inc.
(785) 625-3858

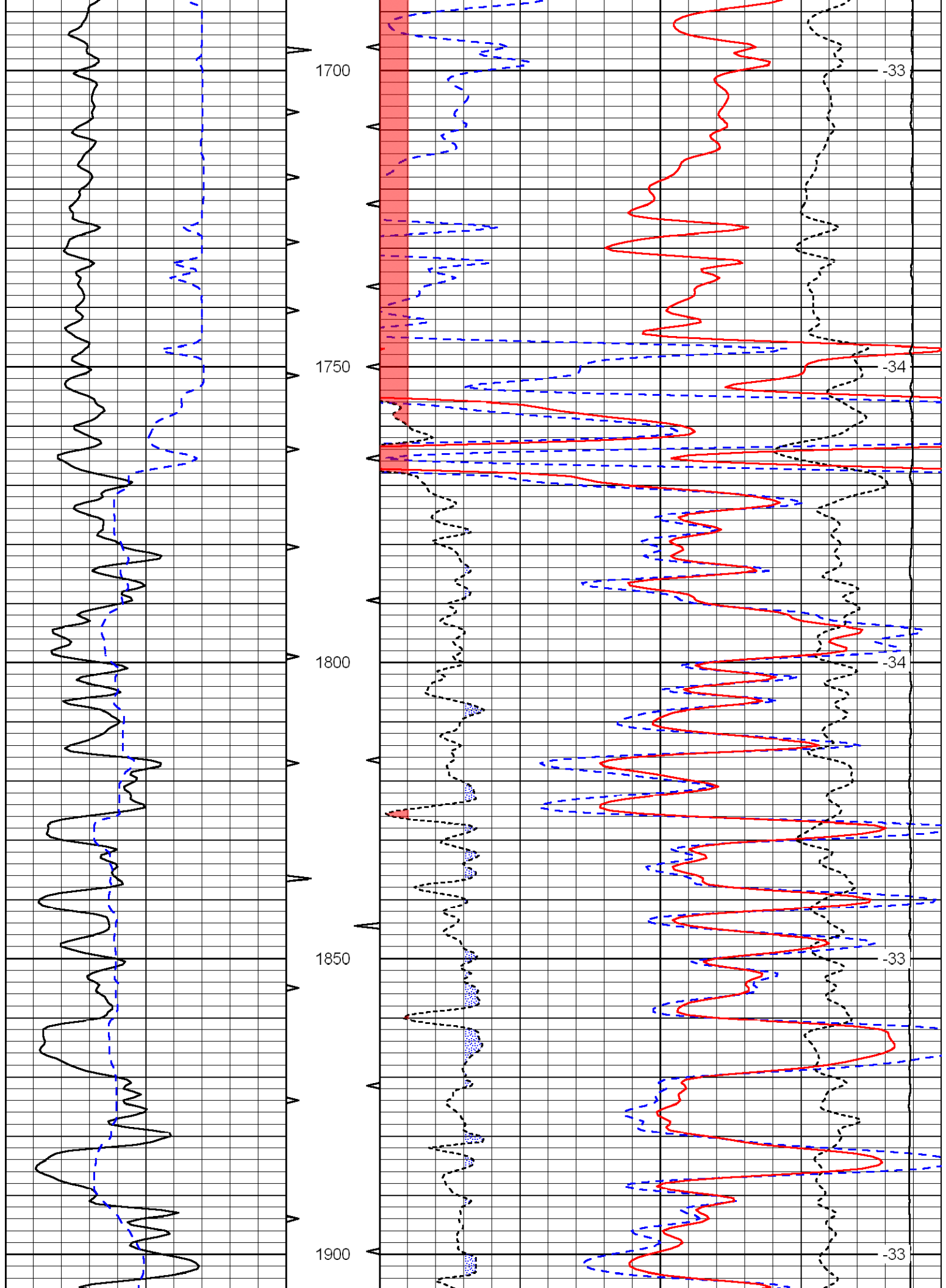
Otis 9 N, 1/2 W, 1/2 N, S Into

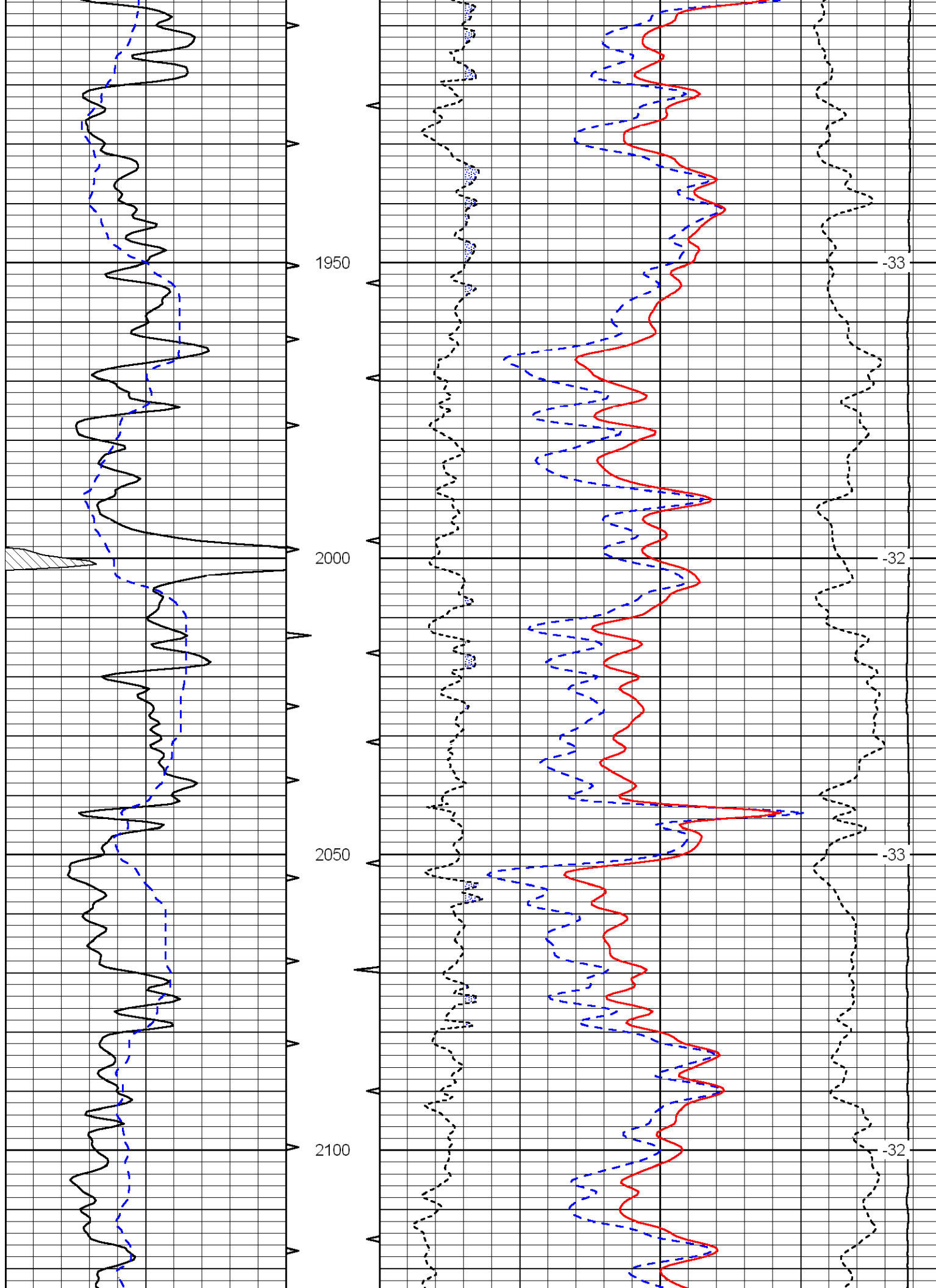
Database File: c:\warrior\data\sam gary_maier - yarmer no. 1-26\samhd.db
 Dataset Pathname: dil\sam2in
 Presentation Format: cdl
 Dataset Creation: Sat Dec 13 07:14:08 2008
 Charted by: Depth in Feet scaled 1:240

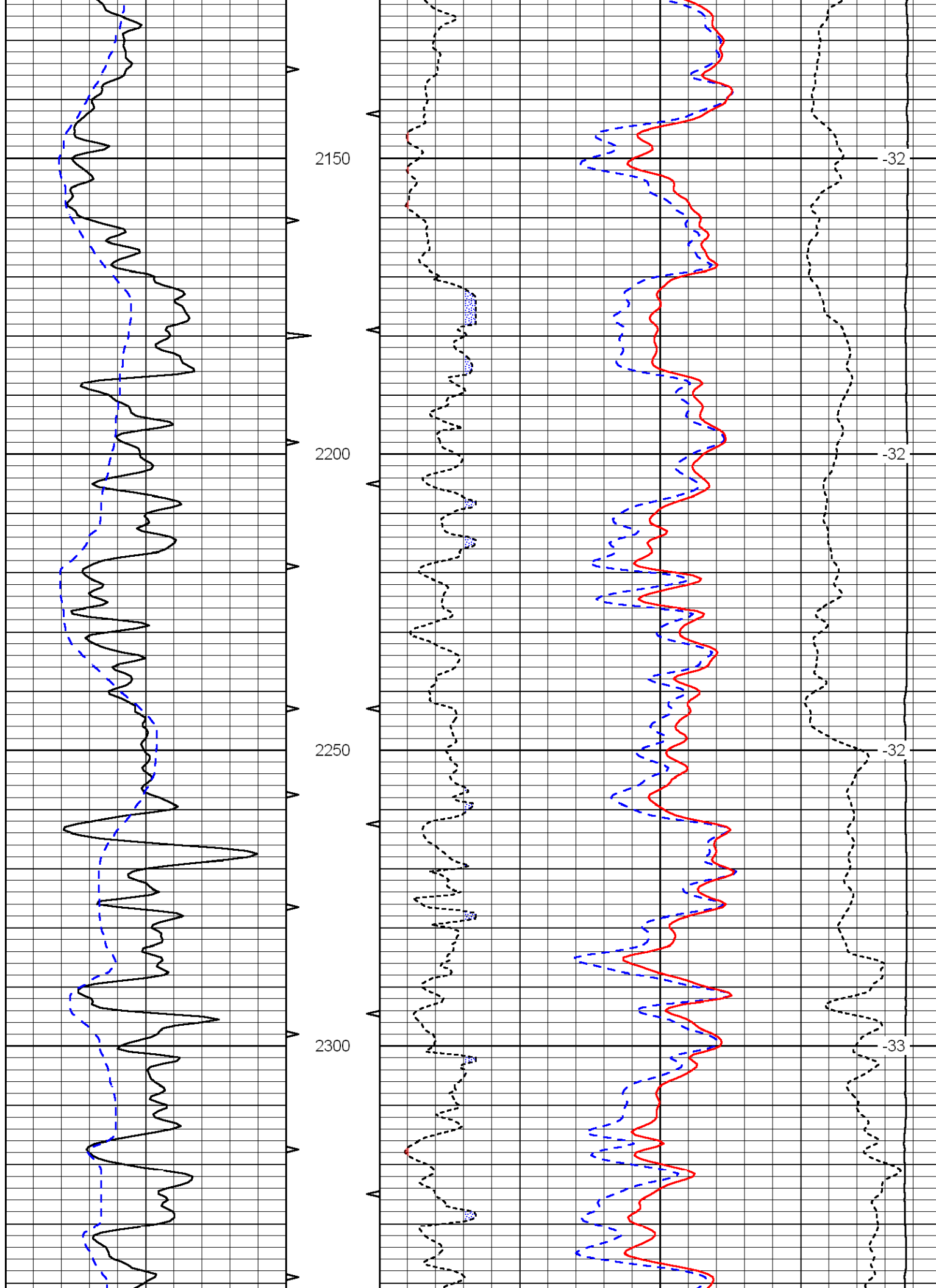
0	Gamma Ray	150
6	Caliper (GAPI)	16

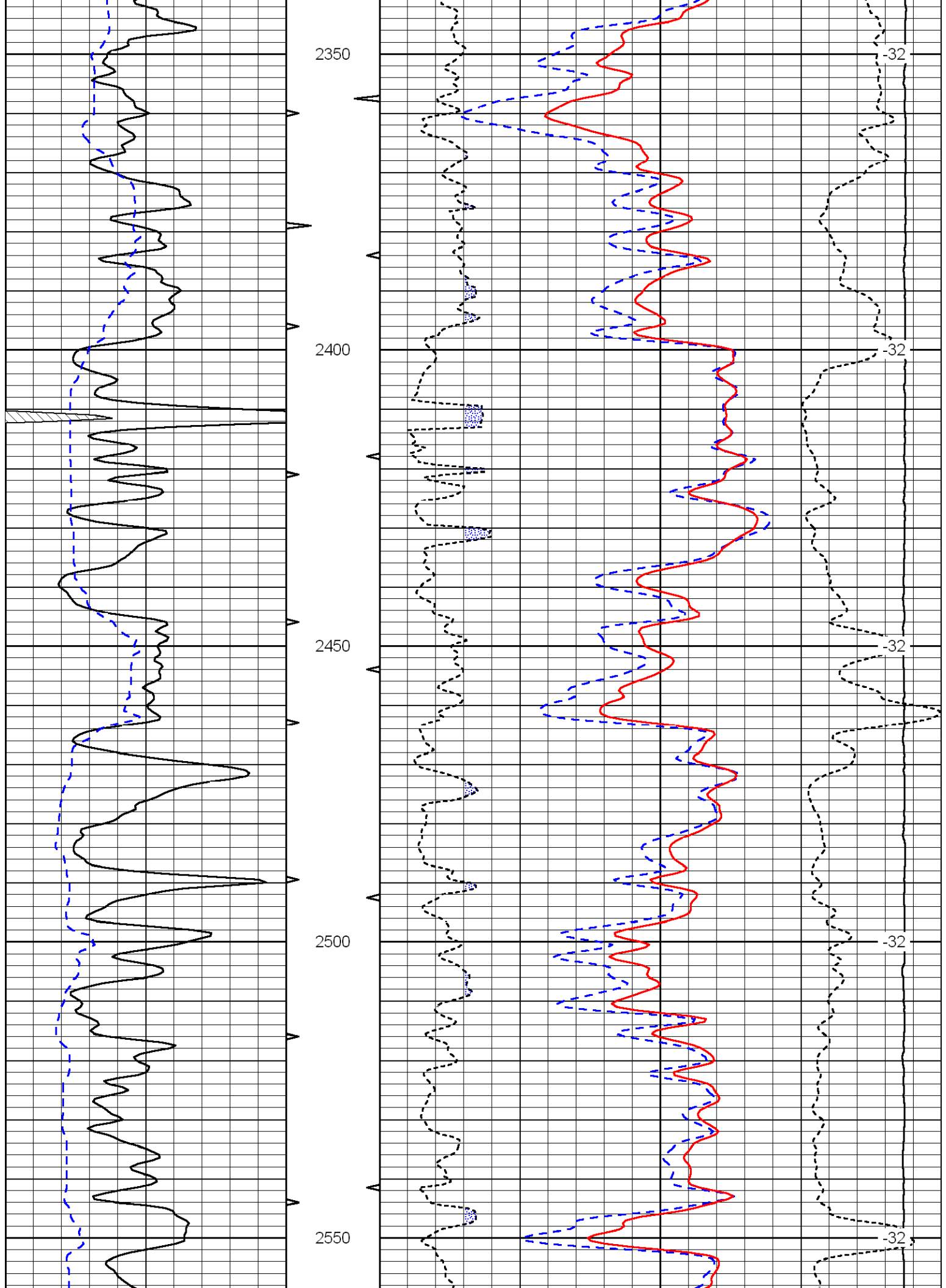
30	Compensated Density		-10
2	Bulk Density		3
15000	Line Tension		0
2.625	DGA	3.425	-0.25
Correction			0.25
LSPD			

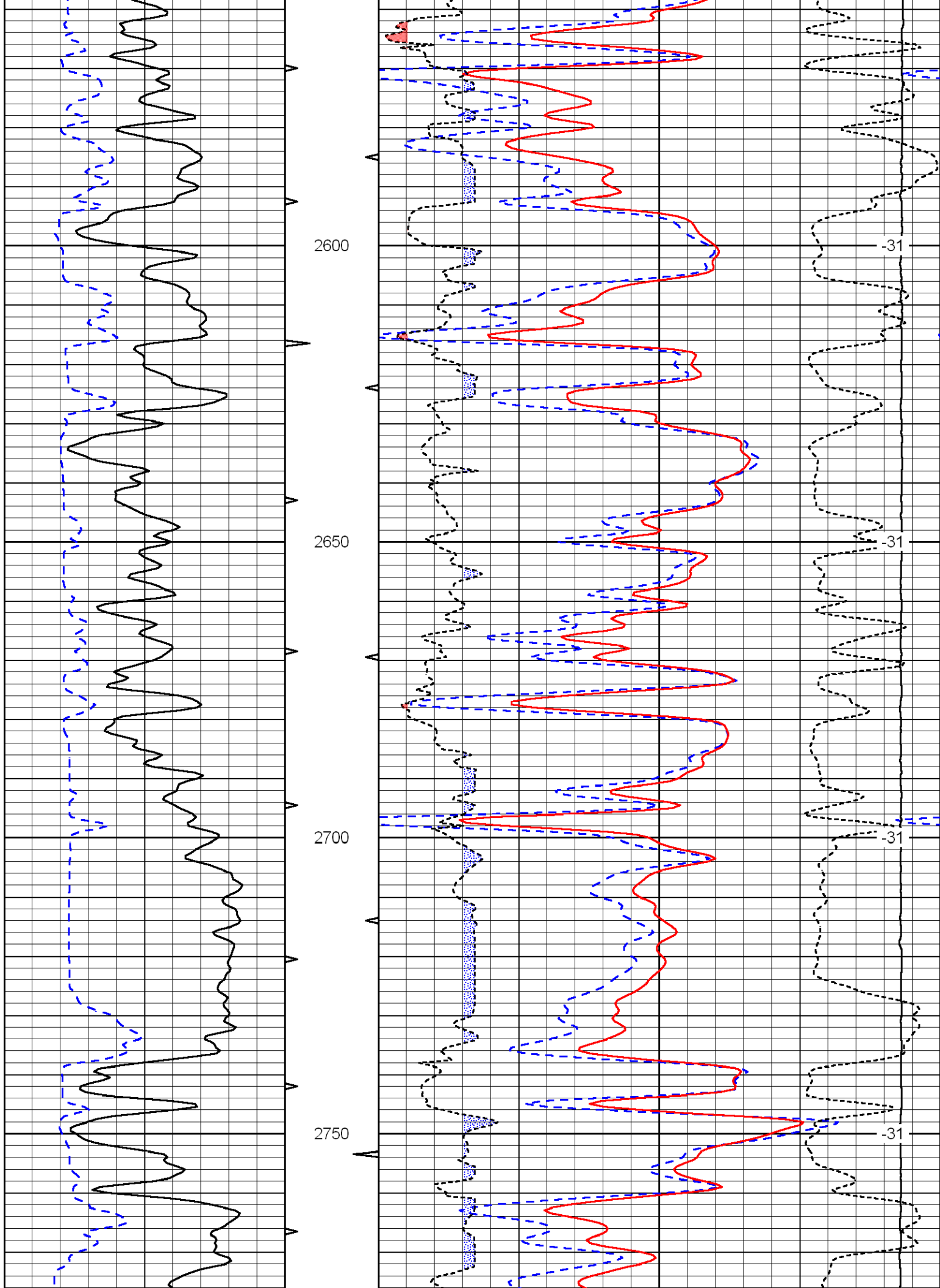


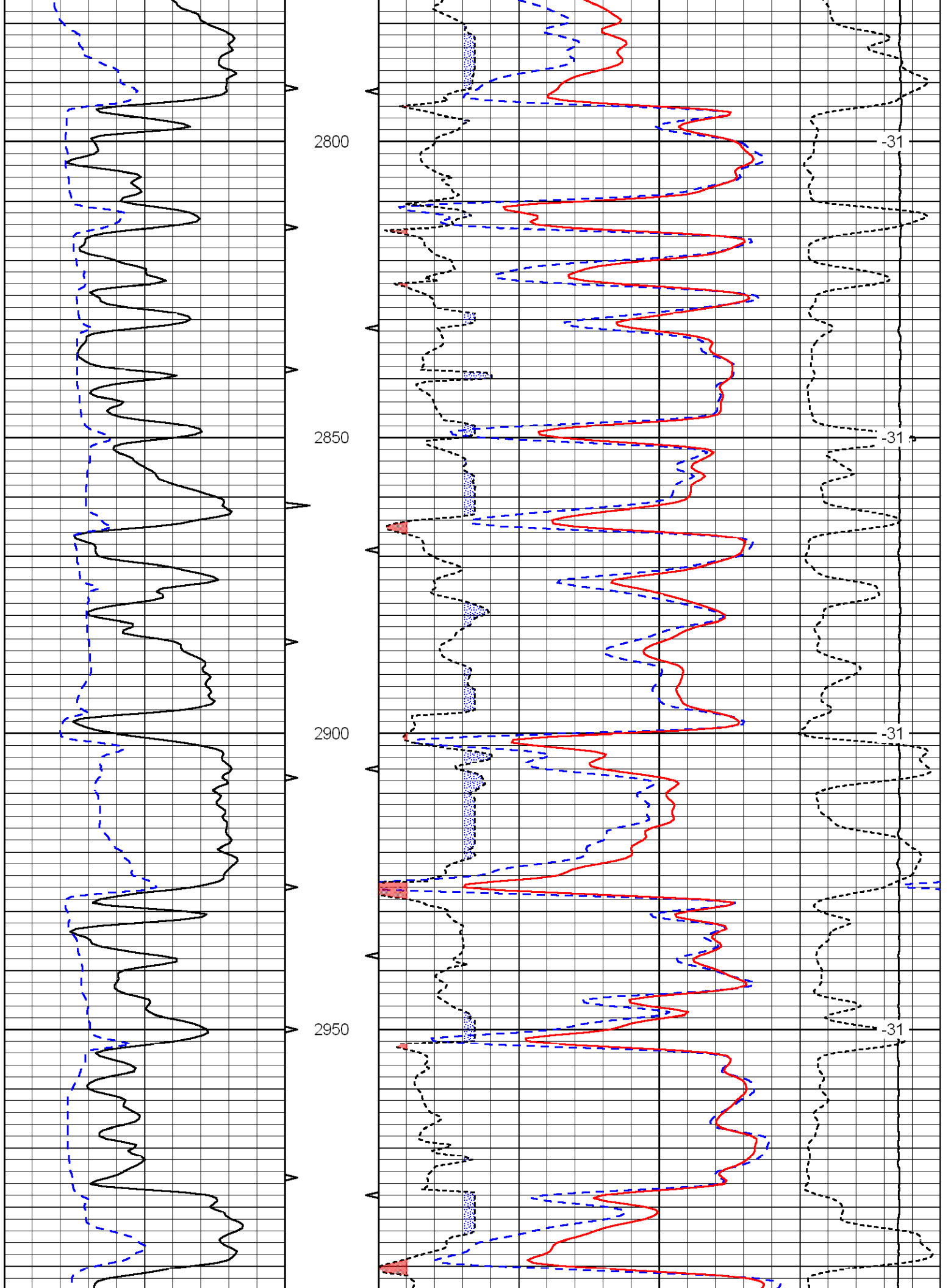


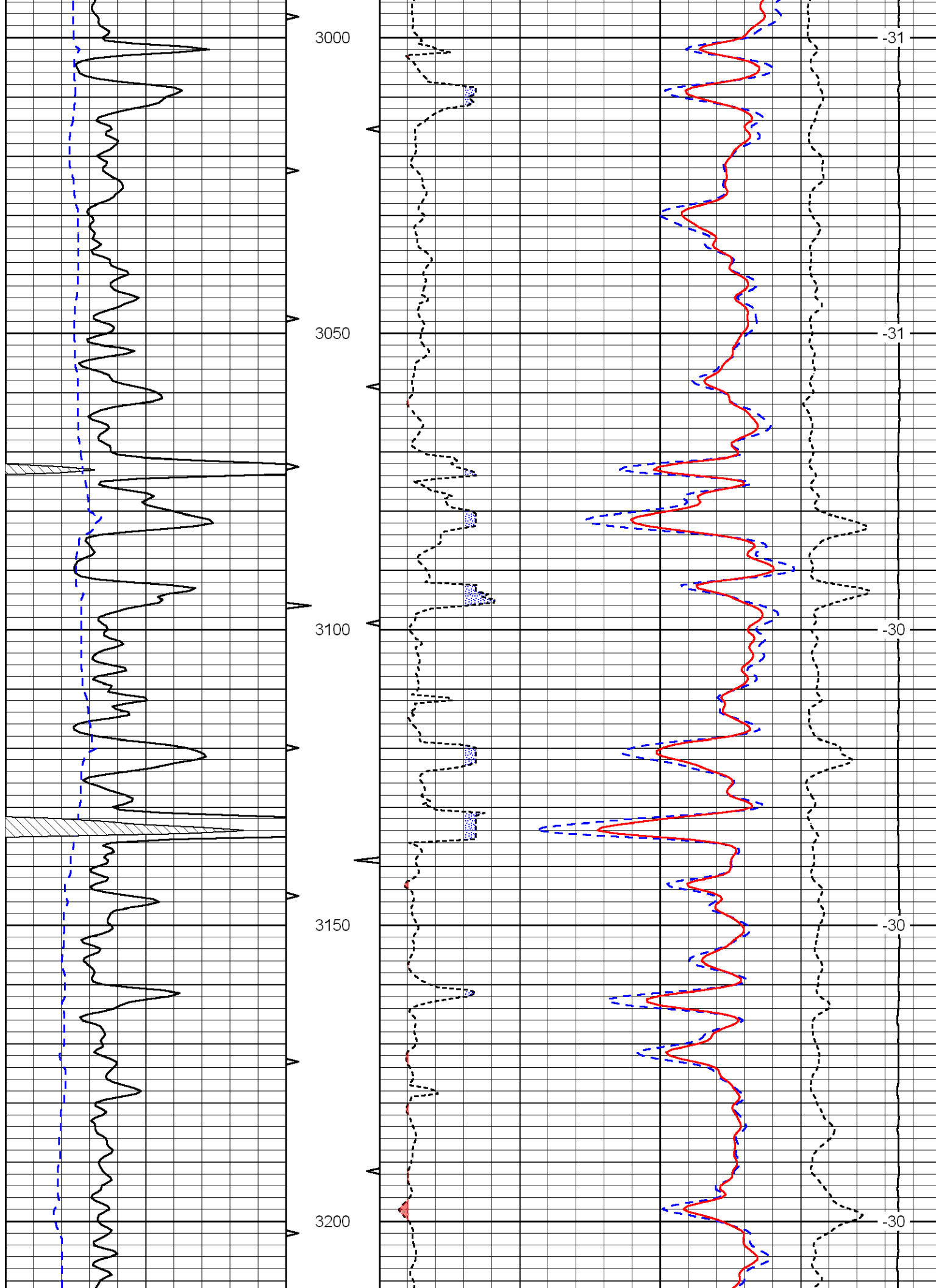


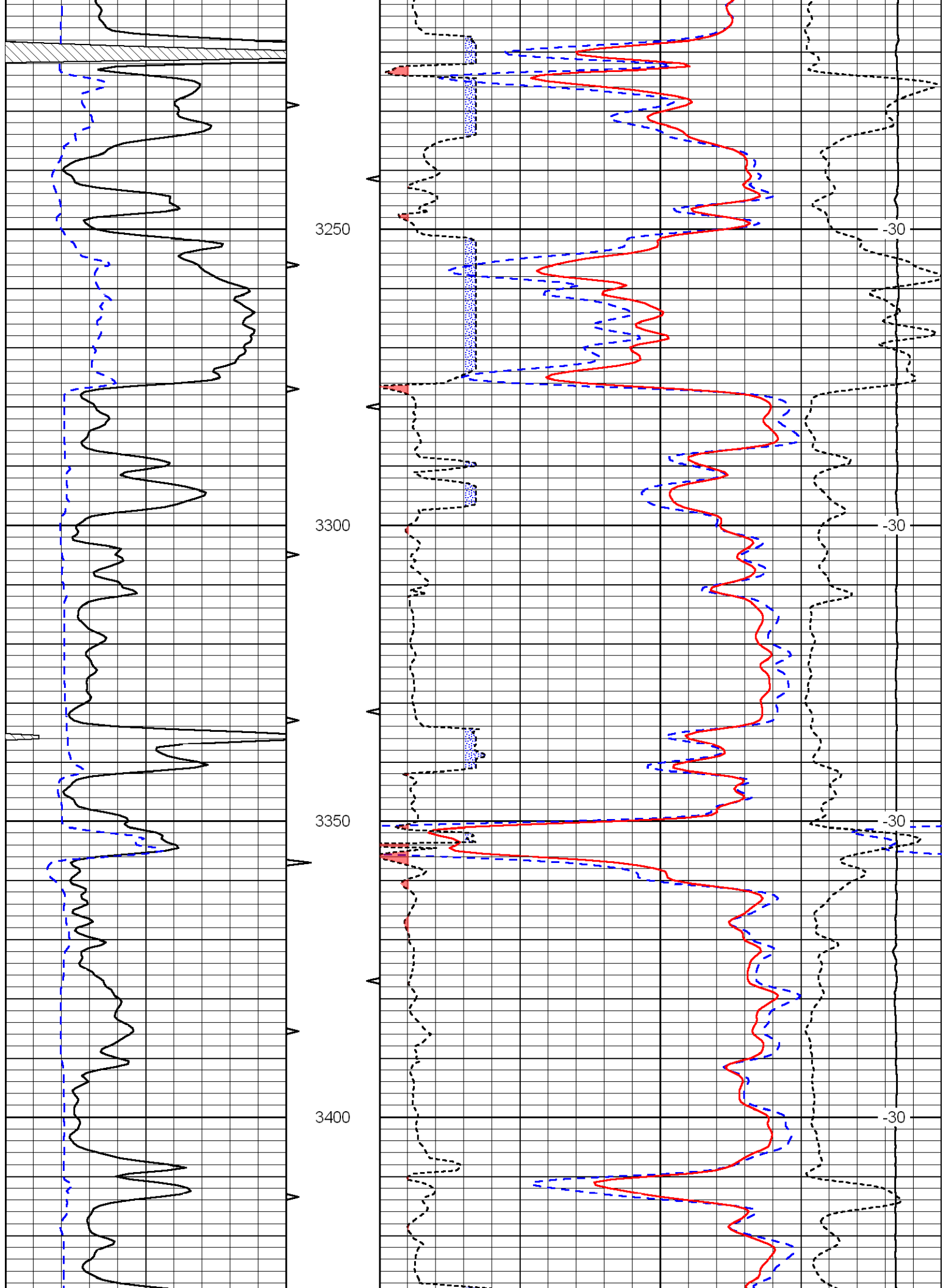


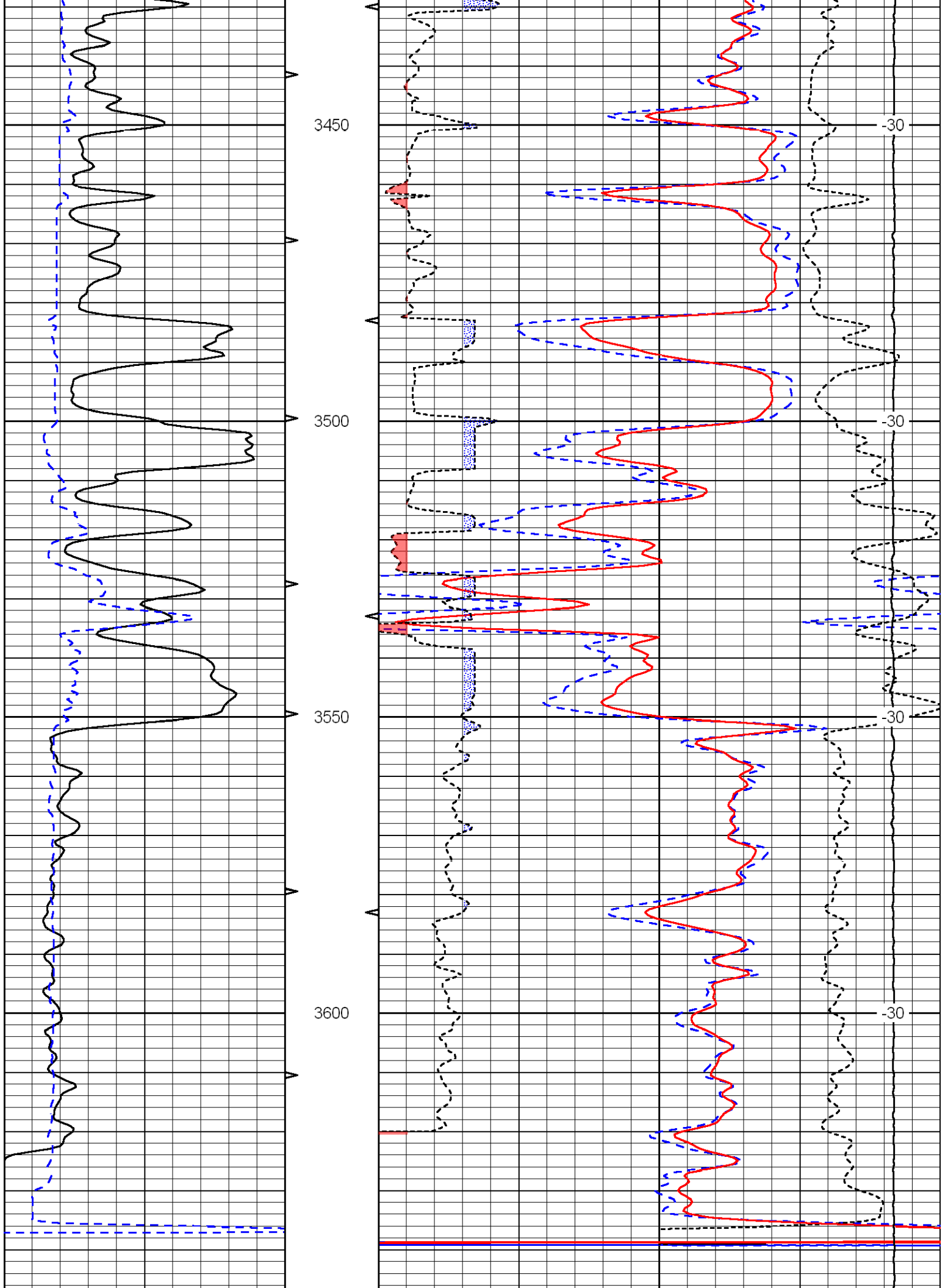


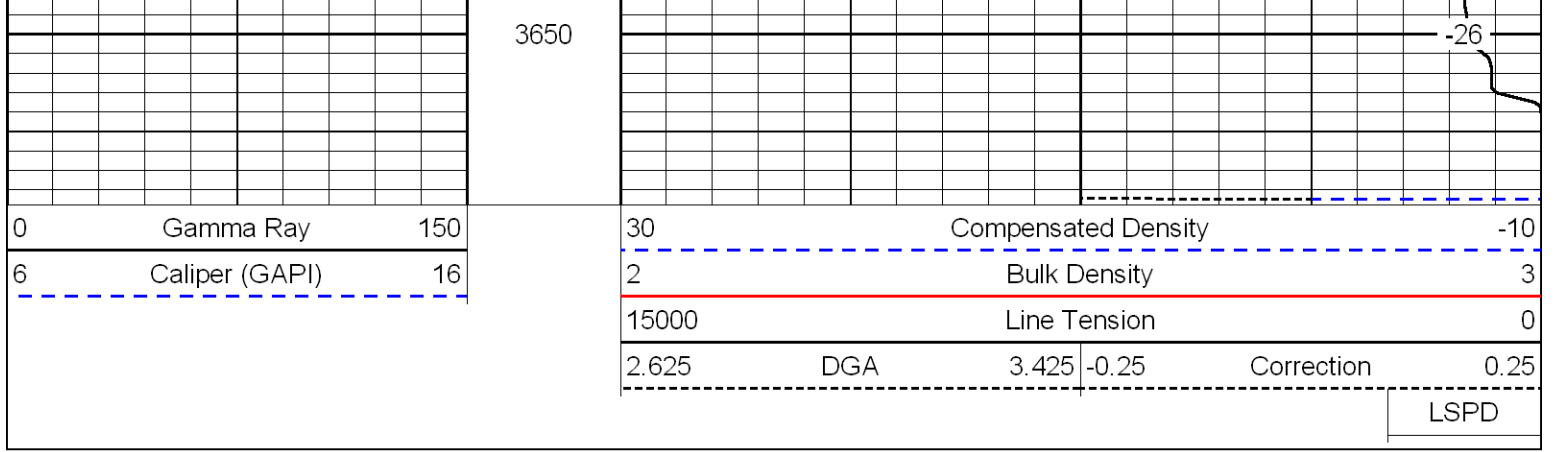












Database File: c:\warrior\data\sam gary_maier - yarmer no. 1-26\samhd.db
 Dataset Pathname: dil\sam2in
 Presentation Format: cndlspec
 Dataset Creation: Sat Dec 13 07:14:08 2008
 Charted by: Depth in Feet scaled 1:240

