



Dual Induction Log

DIGITAL LOG

(785) 625-3858

API No. 15-165-21,842-00-00

Company **Samuel Gary Jr. and Assoc., Inc.**

Well **Maier - Yarmer No. 1-26**

Field **Wildcat**

County **Rush**

State

Kansas

Location

**NE NW SW
2475' FSL & 1225' FWL**

Other Services
CNL/CDL
MEL/BHCS

Sec: **26**

Twp: **16S**

Rge: **16W**

Elevation

Permanent Datum **Ground Level**

Elevation 1974

Log Measured From **Kelly Bushing**

10 Ft. Above Perm. Datum

K.B. 1984
D.F. 1974
G.L. 1974

Date **12/13/2008**

Run Number **One**

Depth Driller **3650**

Depth Logger **3651**

Bottom Logged Interval **3650**

Top Log Interval **1050**

Casing Driller **8.625 @ 1063**

Casing Logger **1062**

Bit Size **7.875**

Type Fluid in Hole **Chemical**

Salinity, ppm CL **9.200**

Density / Viscosity **9.4 55**

pH / Fluid Loss **9.5 11.2**

Source of Sample **Flowline**

Rm @ Meas. Temp **1 @ 55**

Rmf @ Meas. Temp **.75 @ 55**

Rmc @ Meas. Temp **1.35 @ 55**

Source of Rmf / Rmc **Charts**

Rm @ BHT **.48 @ 115**

Operating Rig Time **5 Hours**

Max Rec. Temp. F **115**

Equipment Number **10**

Location **Hays**

Recorded By **Jason Wellbrock**

Witnessed By **Justin Carter**

<<< Fold Here >>>

All interpretations are opinions based on inferences from electrical or other measurements and we cannot and do not guarantee the accuracy or correctness of any interpretation, and we shall not, except in the case of gross or willful negligence on our part, be liable or responsible for any loss, costs, damages, or expenses incurred or sustained by anyone resulting from any interpretation made by any of our officers, agents or employees. These interpretations are also subject to our general terms and conditions set out in our current Price Schedule.

Comments

Thank you for using Log-Tech, Inc.
(785) 625-3858

Otis 9 N, 1/2 W, 1/2 N, S Into

Database File: c:\warrior\data\sam gary_maier - yarmer no. 1-26\samhd.db
 Dataset Pathname: dil/sam2in
 Presentation Format: dil2in
 Dataset Creation: Sat Dec 13 07:14:08 2008
 Charted by: Depth in Feet scaled 1:600

0	Gamma Ray	150
-200	SP	0

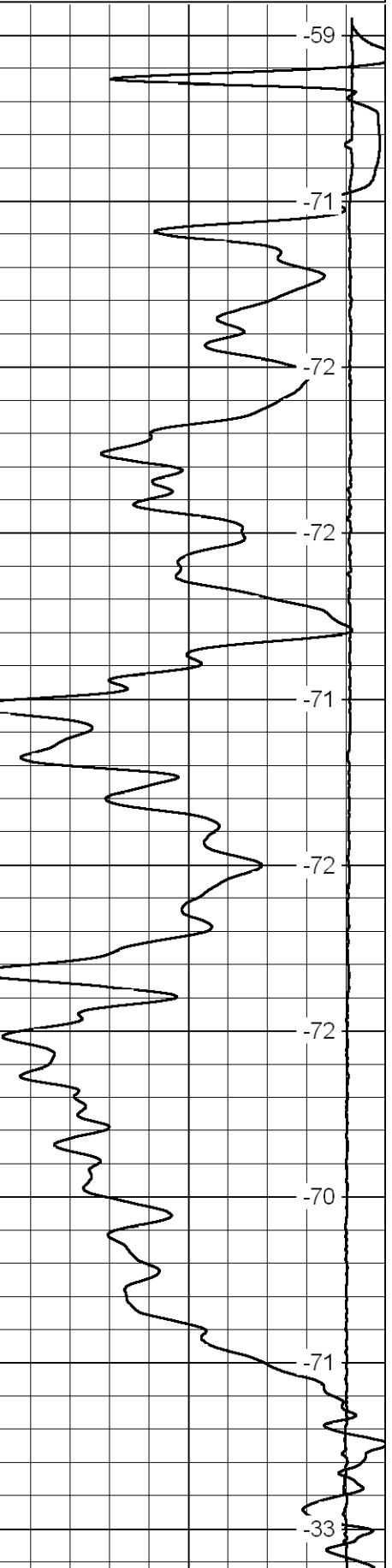
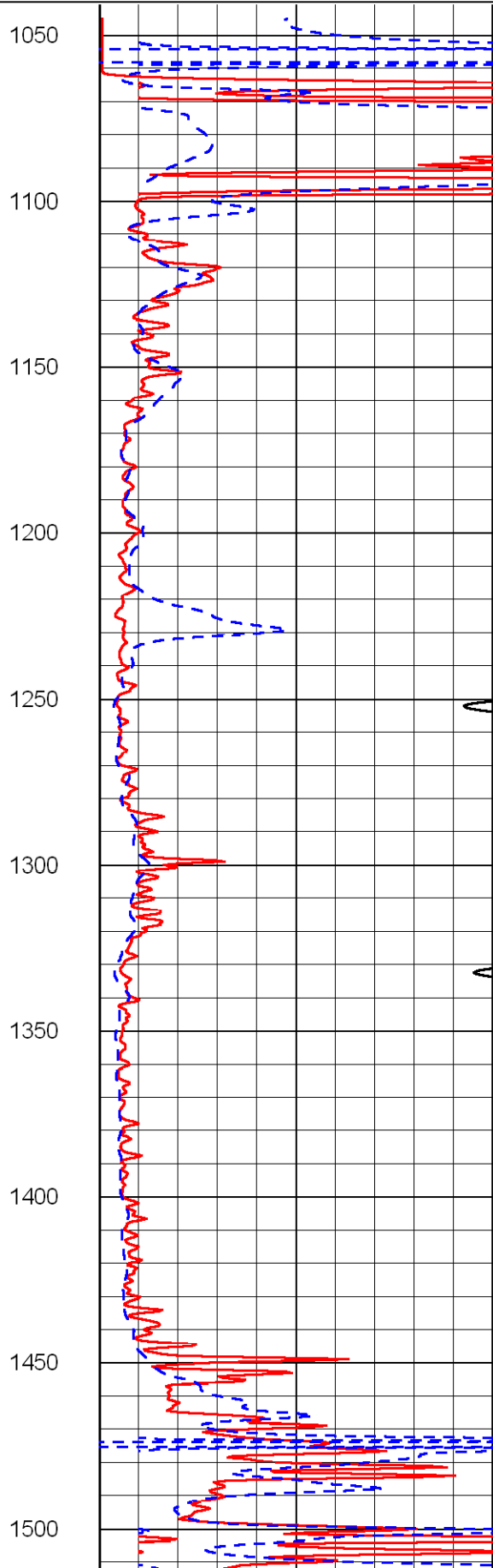
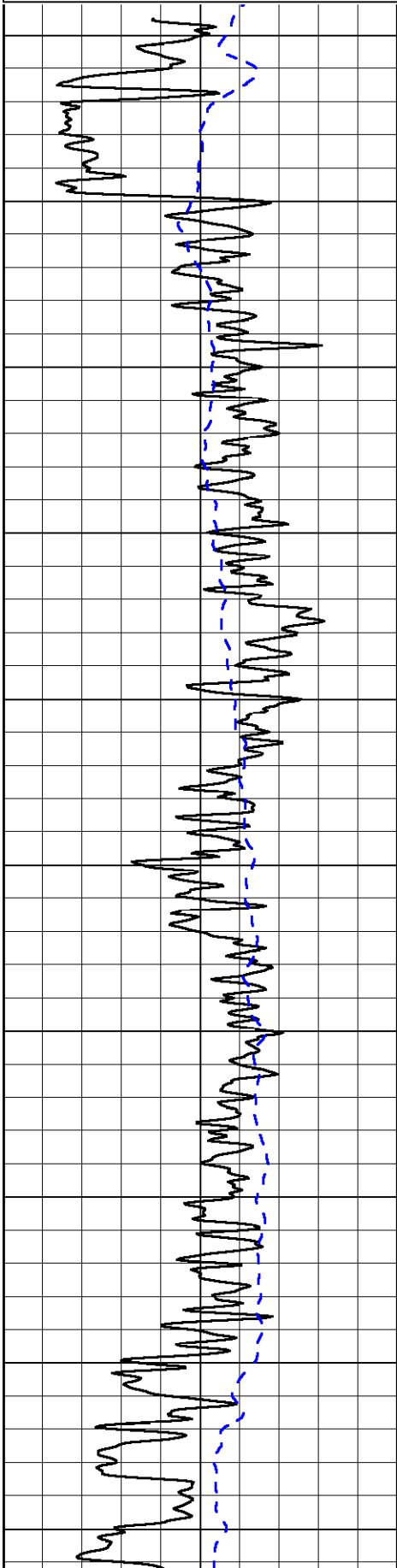
0	Shallow Resistivity	50
0	Deep Resistivity	50

LSPD

1000	Conductivity	0
------	--------------	---

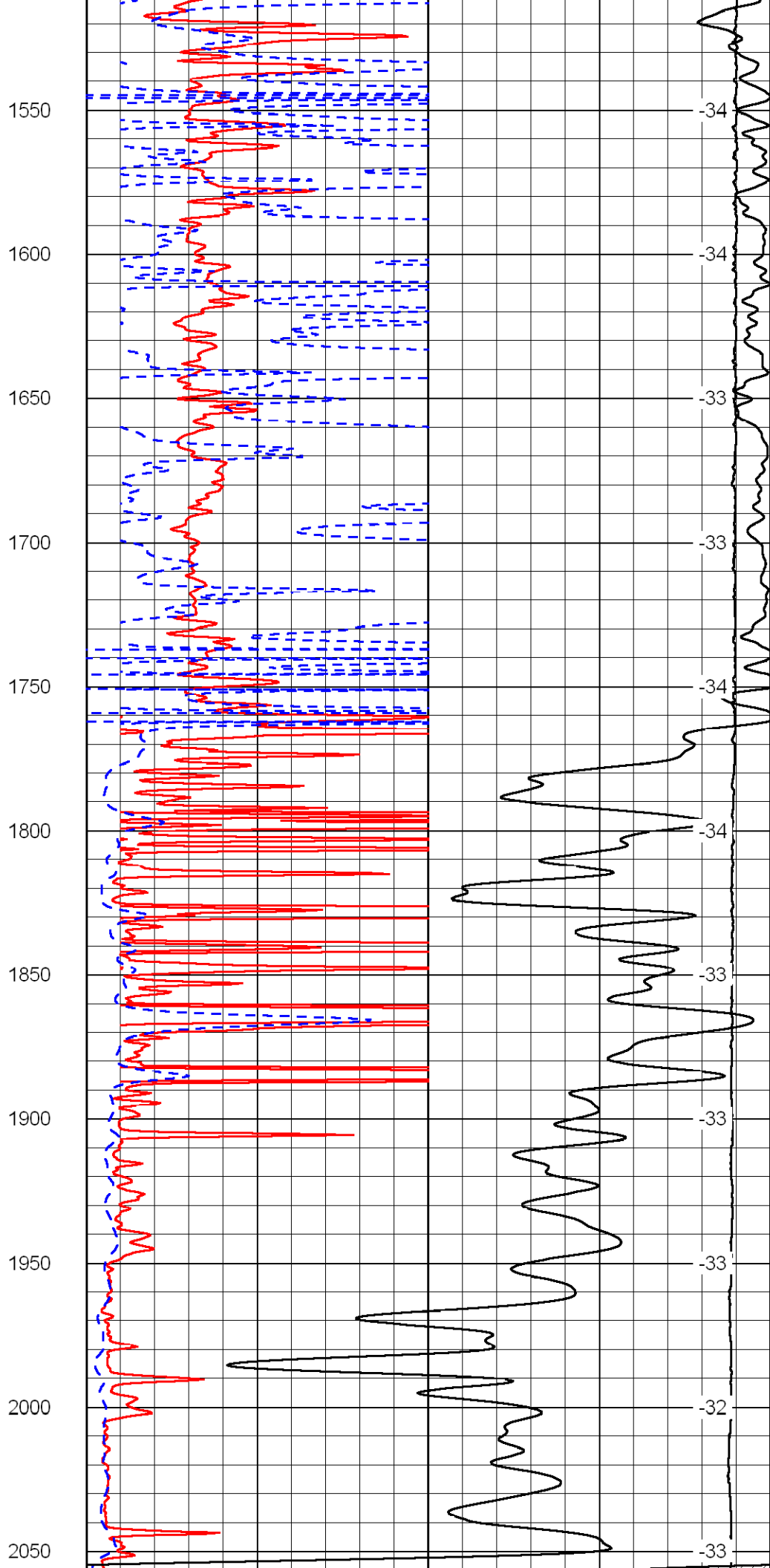
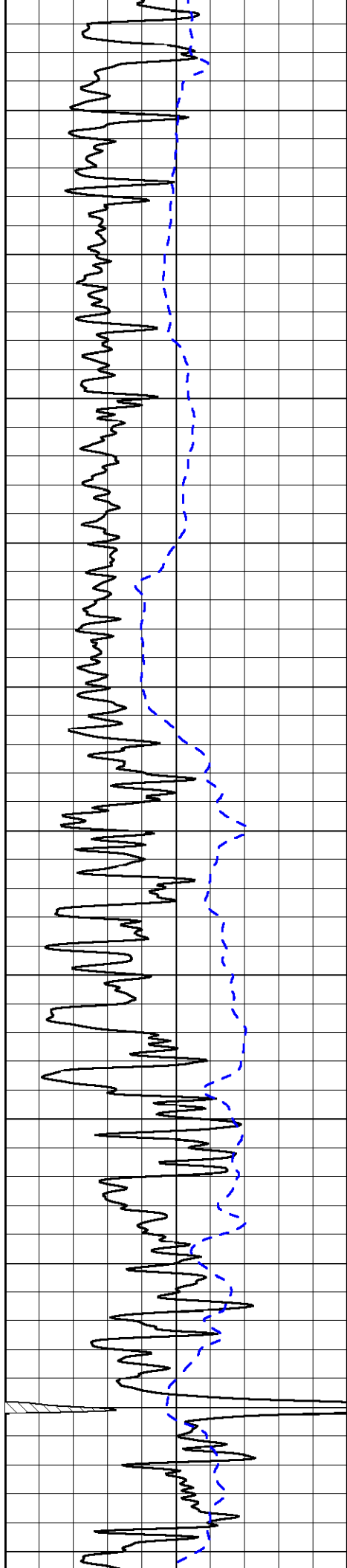
15000	Line Tension	0
-------	--------------	---

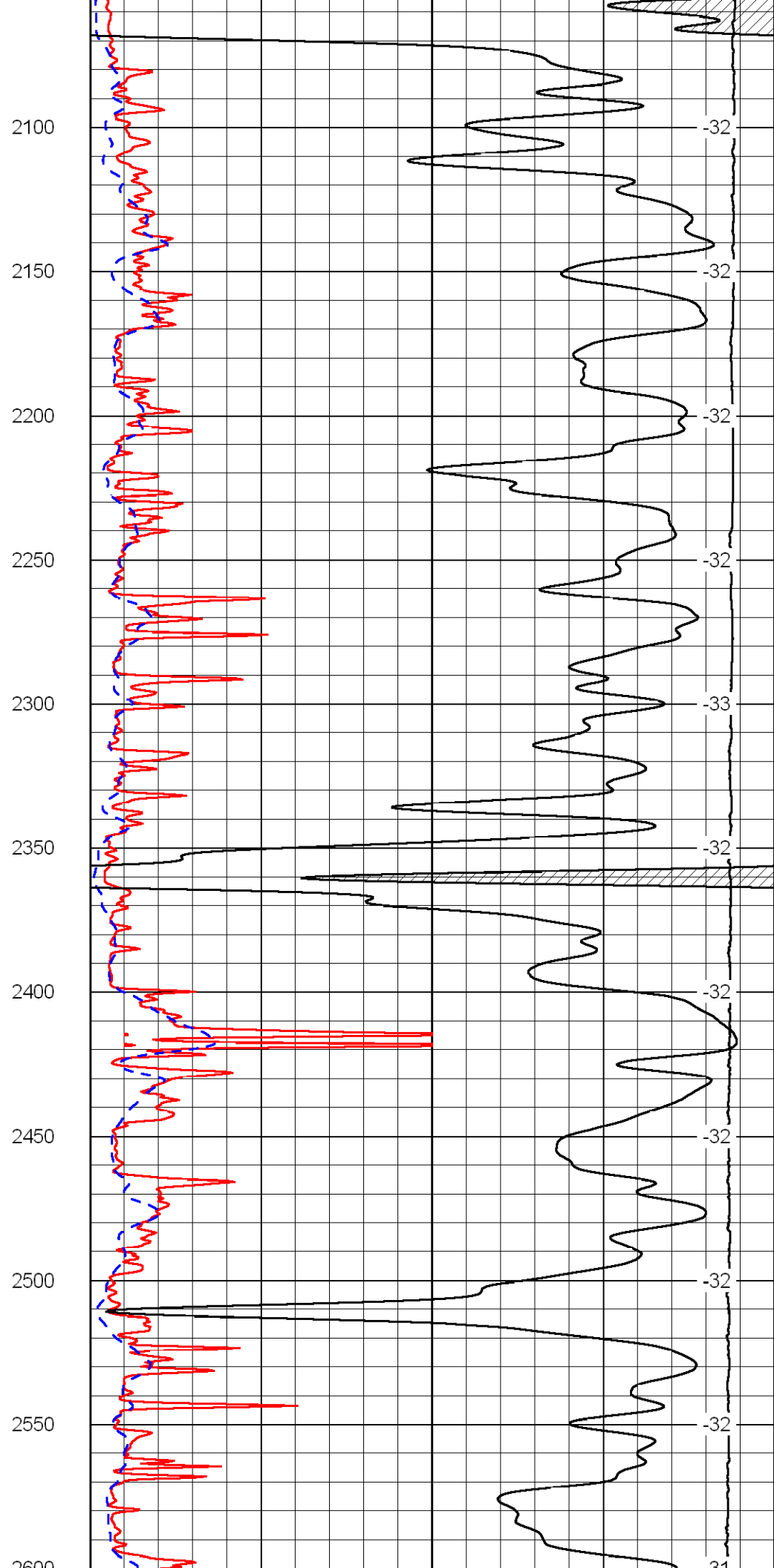
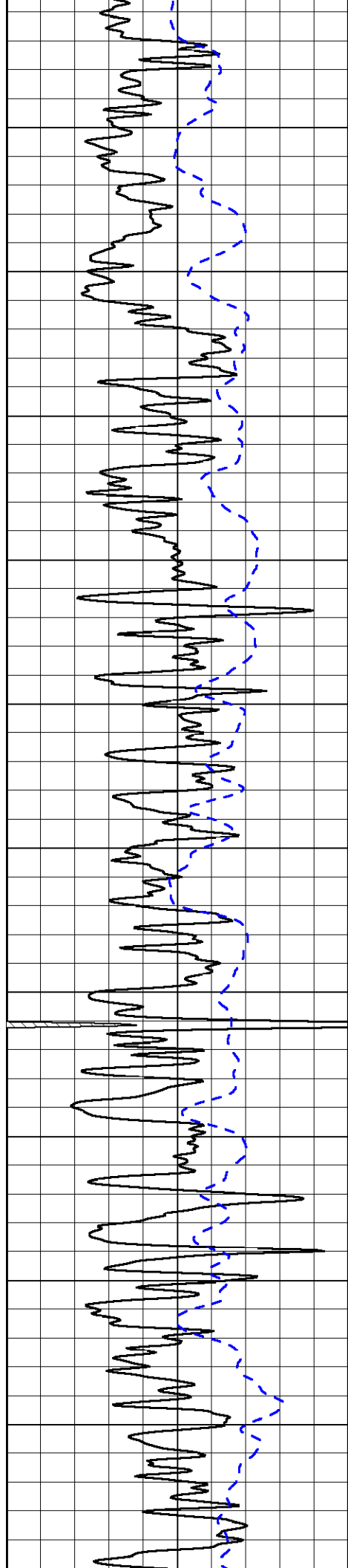
50	Shallow Resistivity	500
50	Deep Resistivity	500

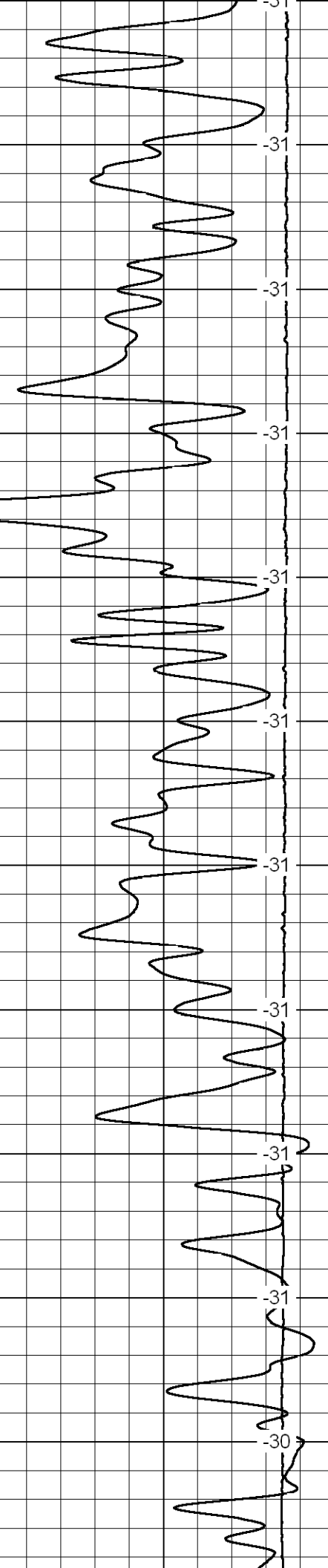
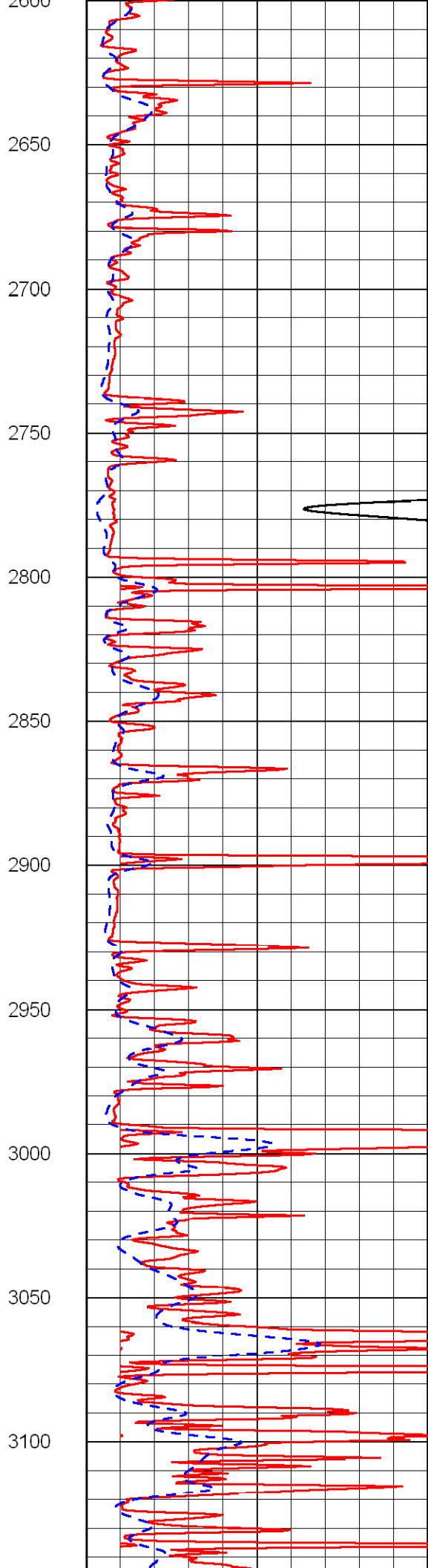
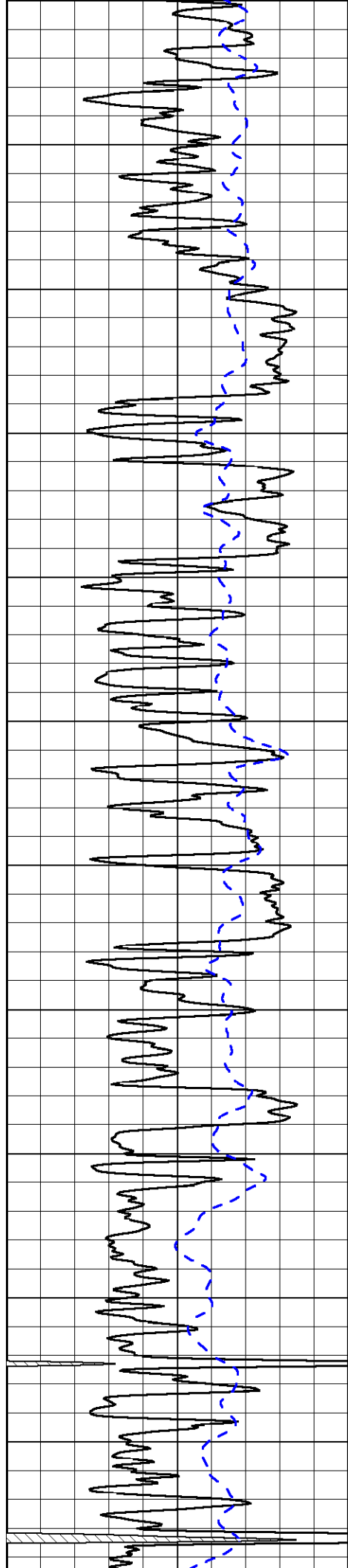


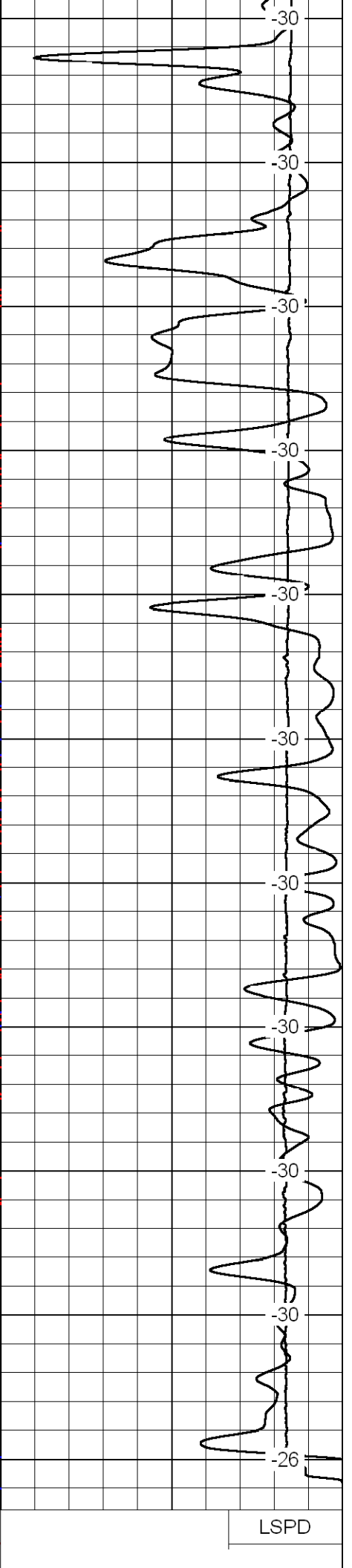
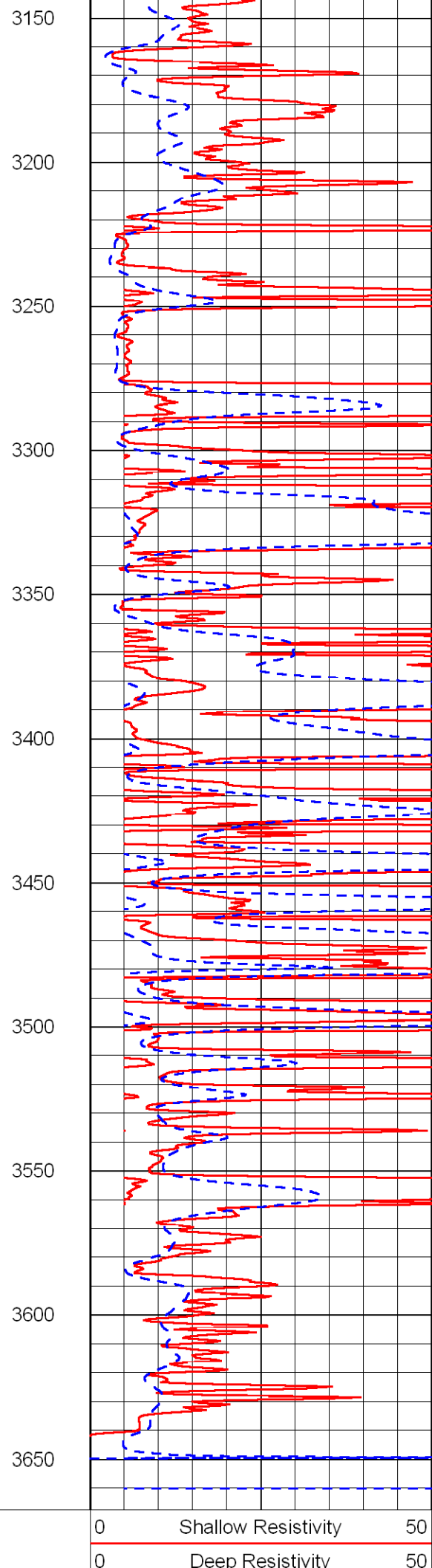
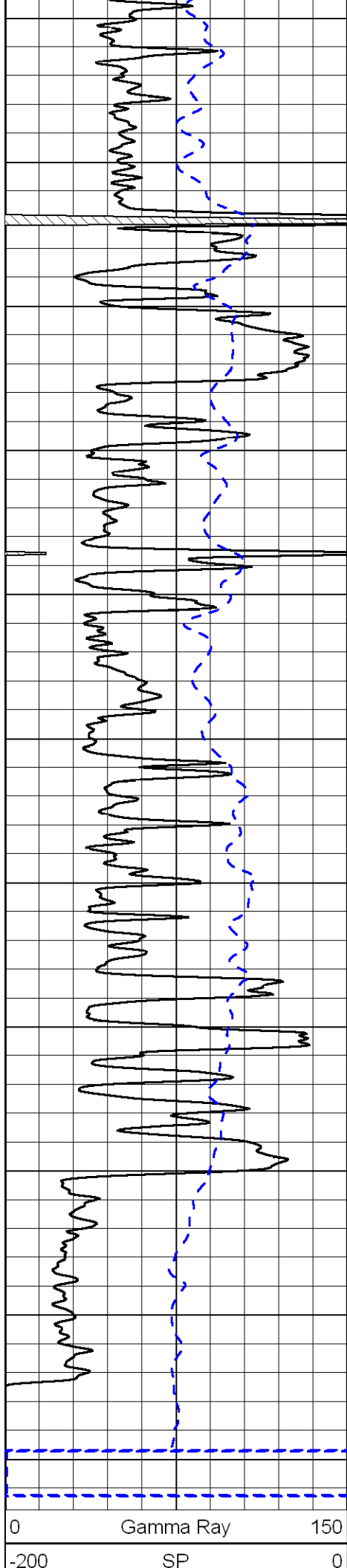
1050
1100
1150
1200
1250
1300
1350
1400
1450
1500

-59
-71
-72
-72
-71
-72
-72
-70
-71
-33







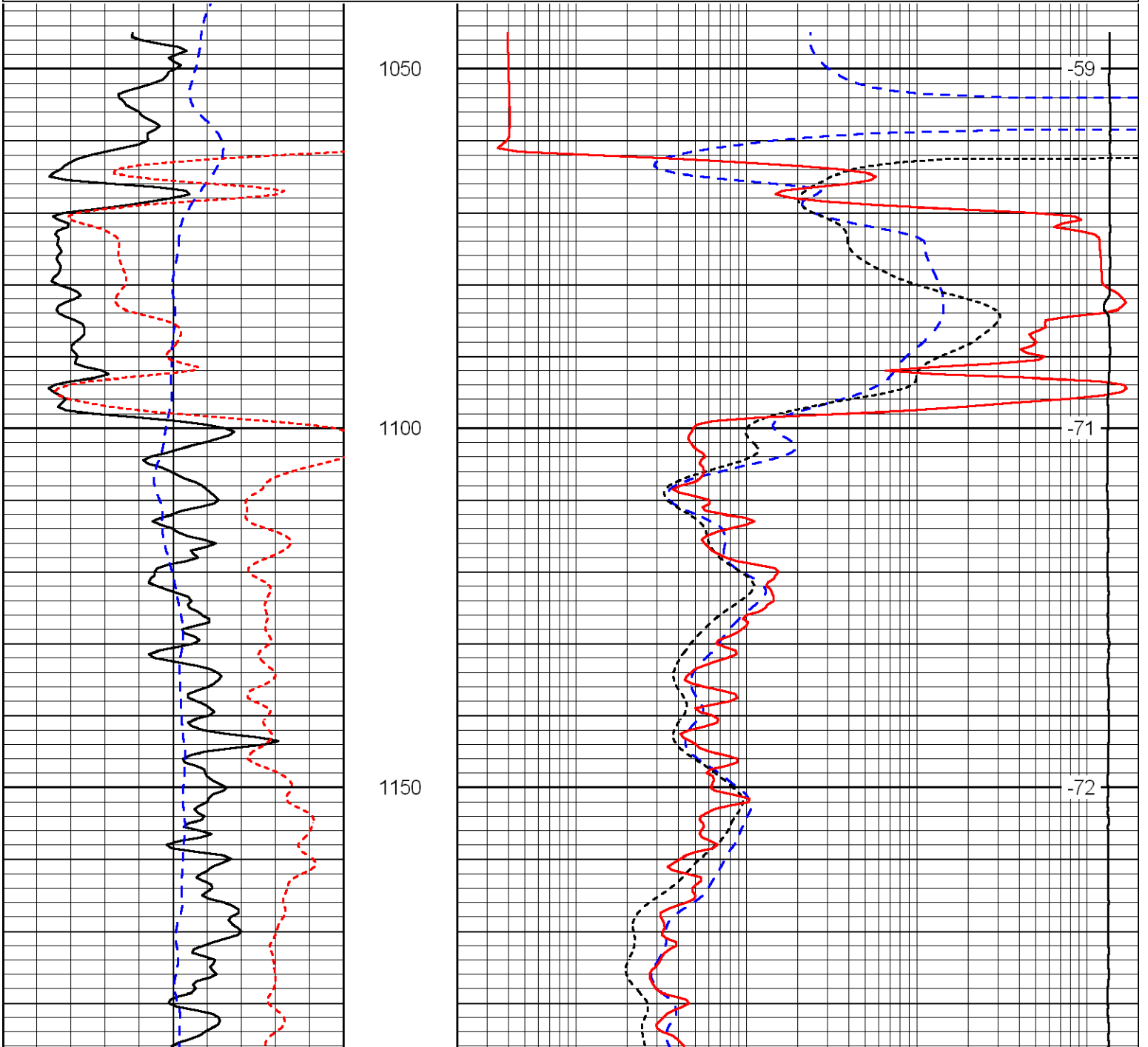


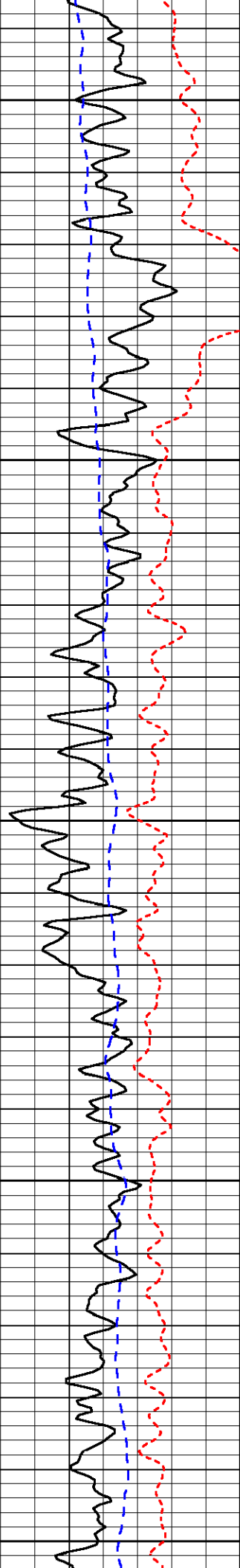
1000	Conductivity	0
15000	Line Tension	0
50	Shallow Resistivity	500
50	Deep Resistivity	500

Database File: c:\warrior\data\sam gary_maier - yarmer no. 1-26\samhd.db
 Dataset Pathname: dil\sam2in
 Presentation Format: dil
 Dataset Creation: Sat Dec 13 07:14:08 2008
 Charted by: Depth in Feet scaled 1:240

0	Gamma Ray	150	0.2	Deep Resistivity	2000
-200	SP	0	0.2	Medium Resistivity	2000
-160	Rxo / Rt	40	0.2	Shallow Resistivity	2000
			15000	Line Tension	0

LSPD





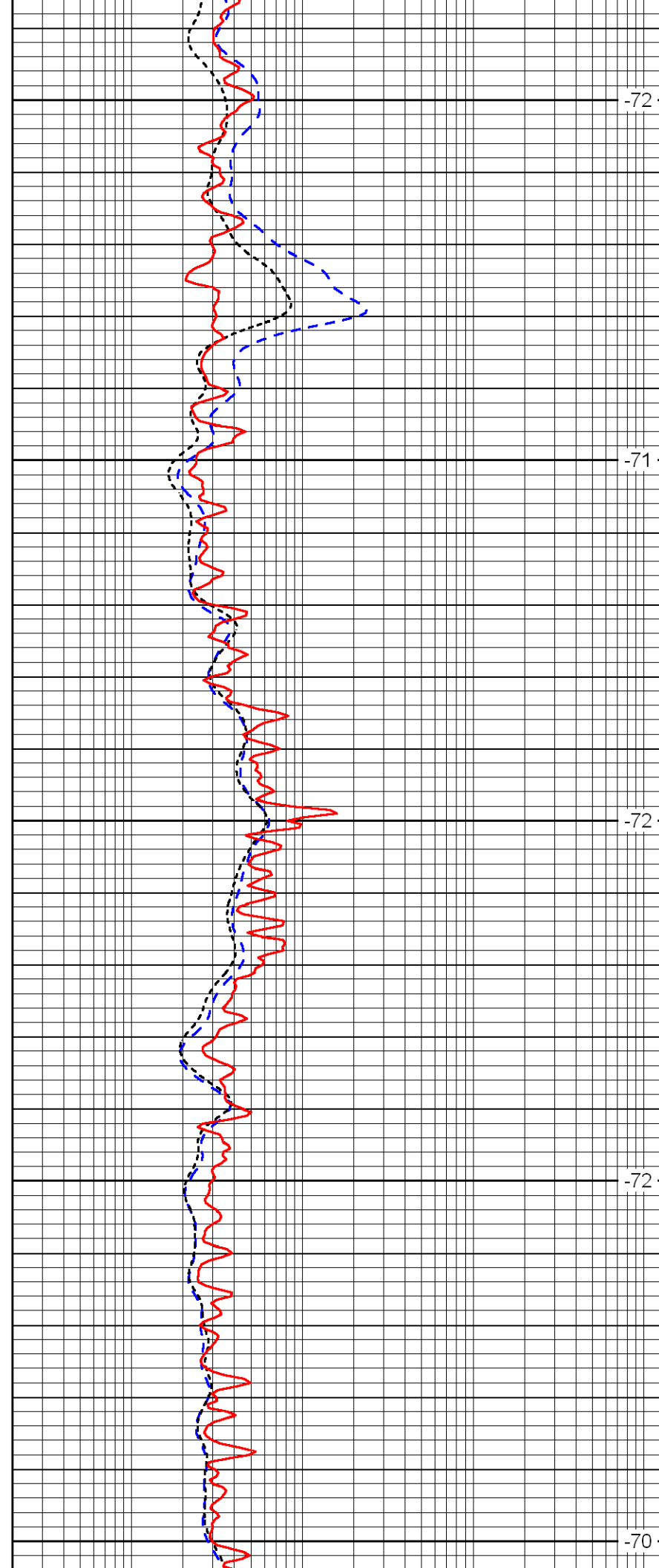
1200

1250

1300

1350

1400



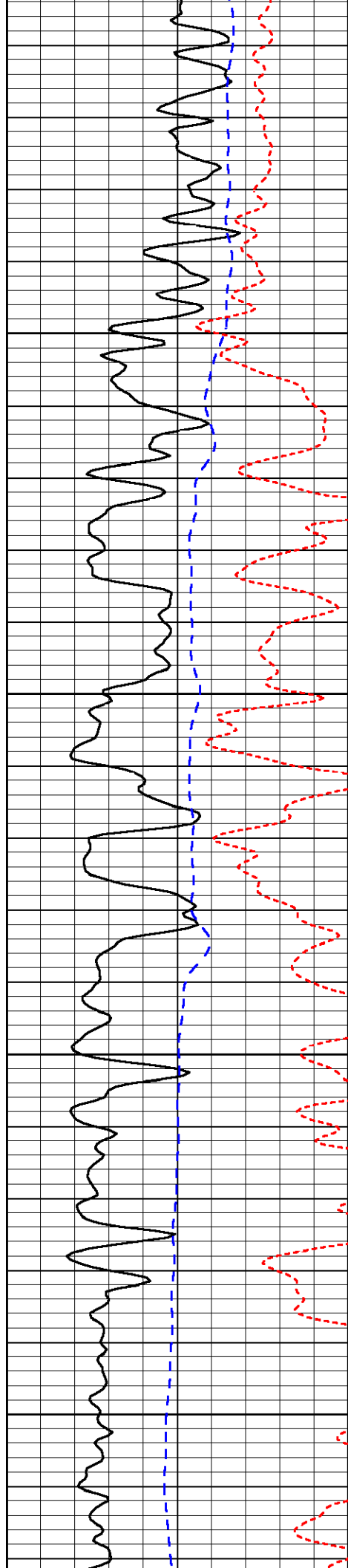
-72

-71

-72

-72

-70

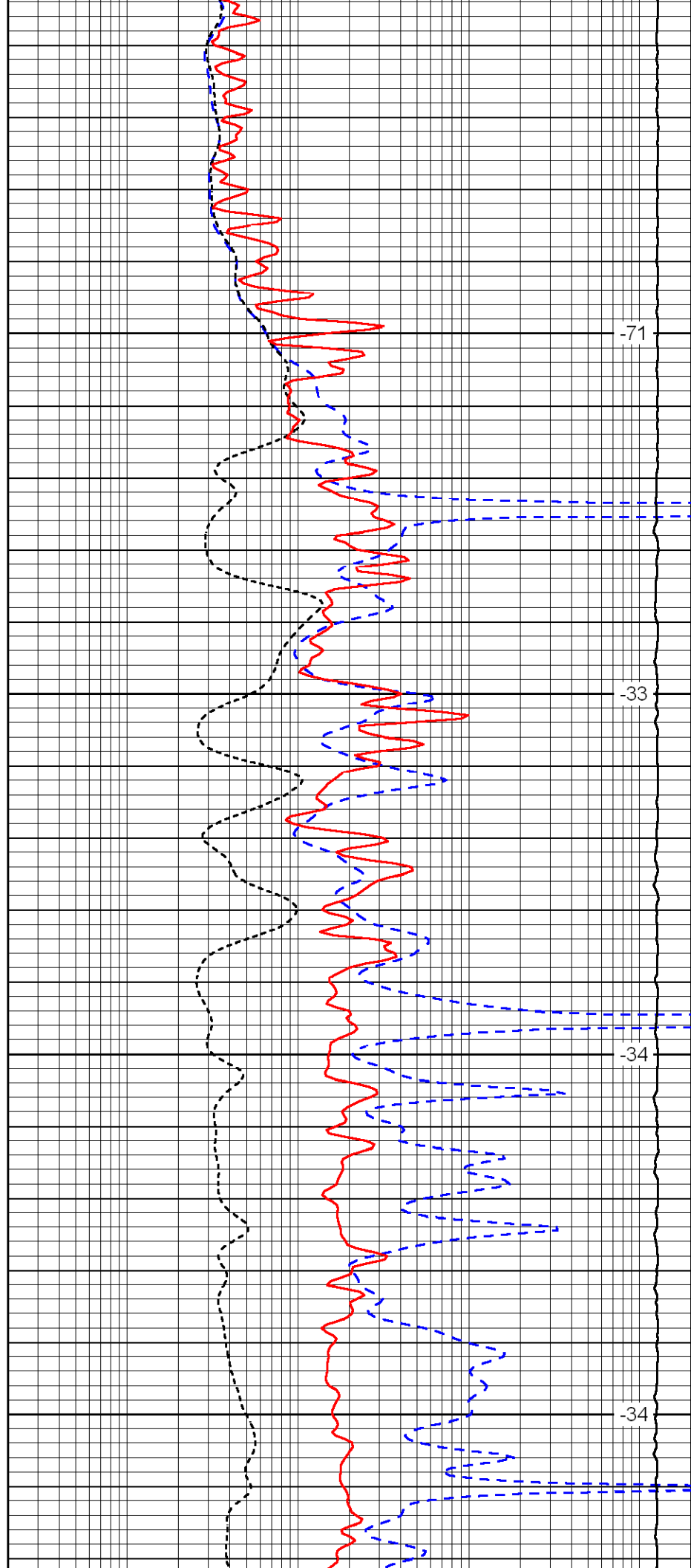


1450

1500

1550

1600

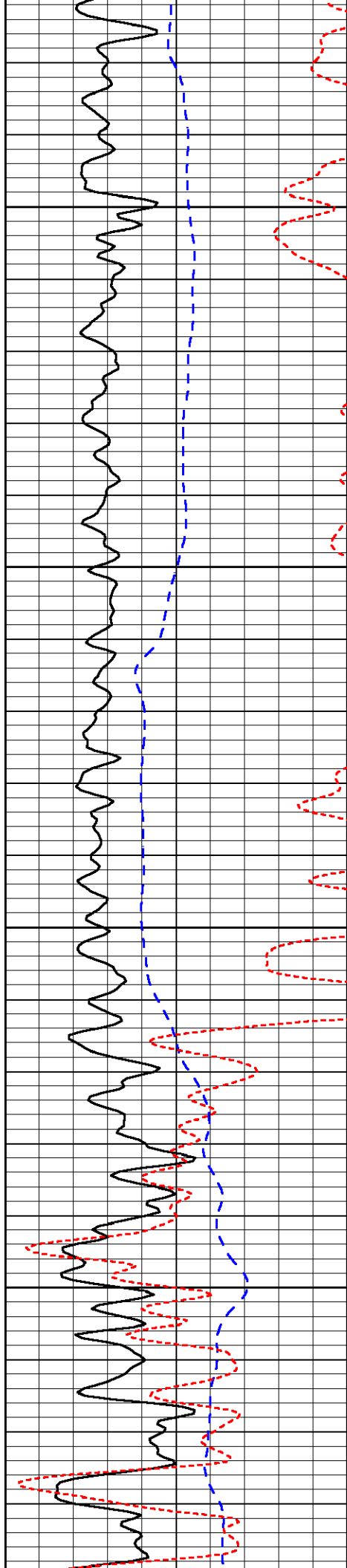


-71

-33

-34

-34

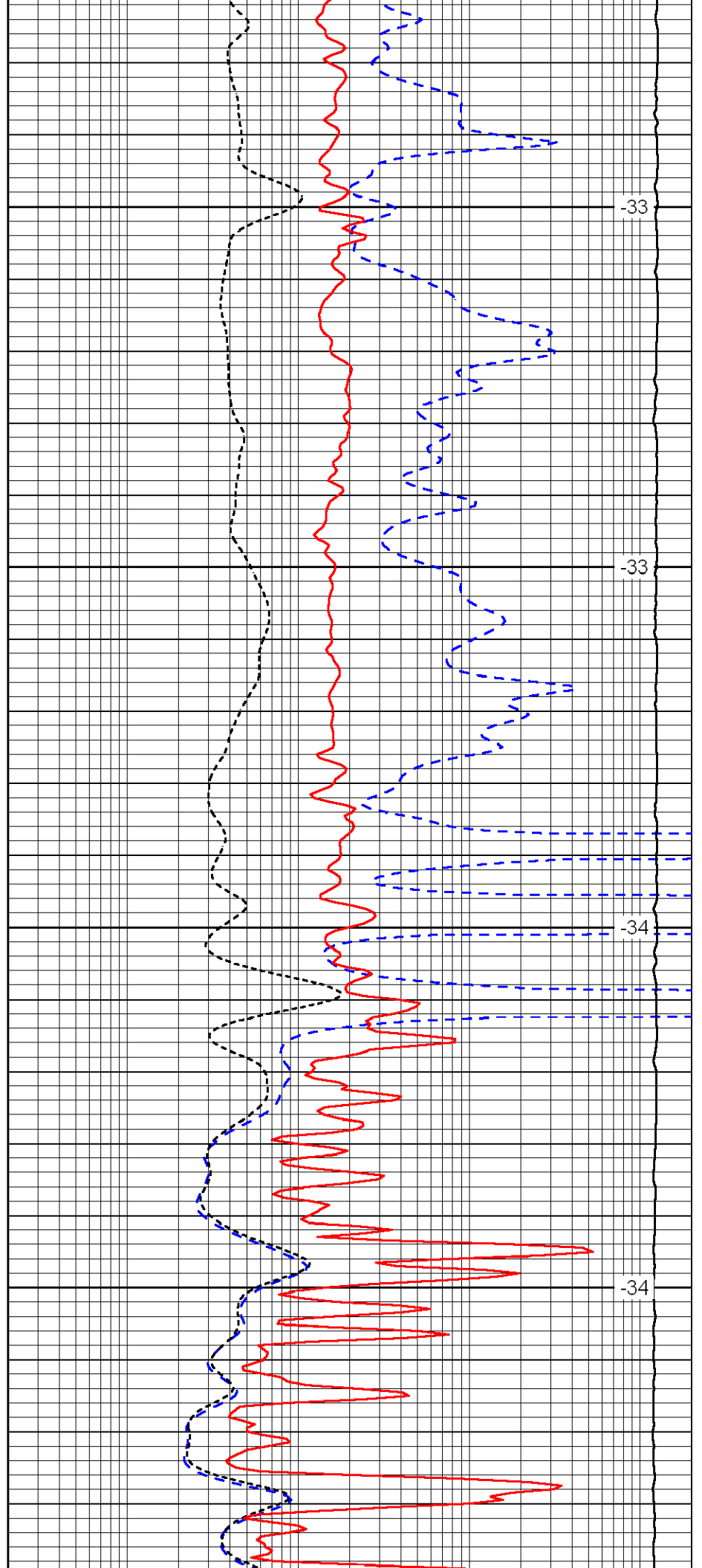


1650

1700

1750

1800

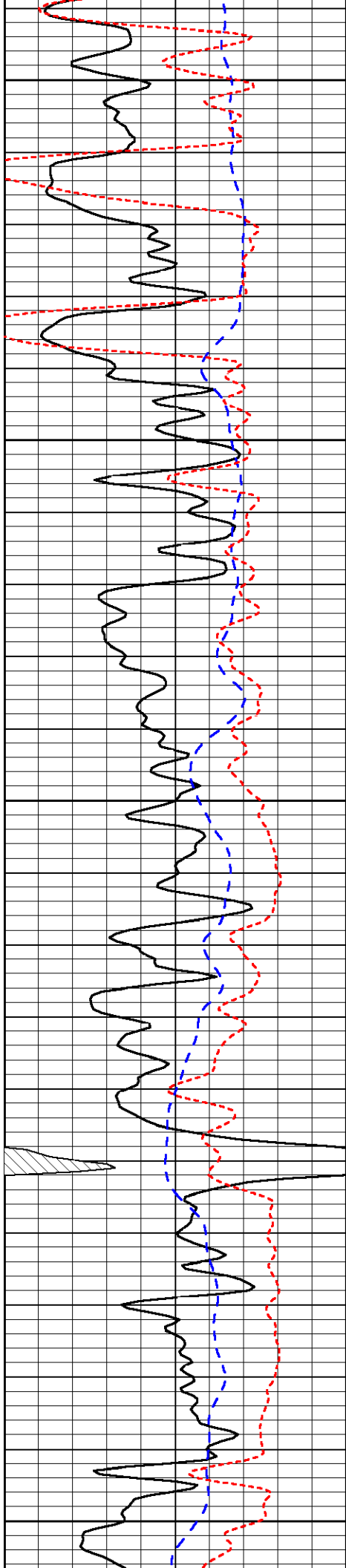


-33

-33

-34

-34



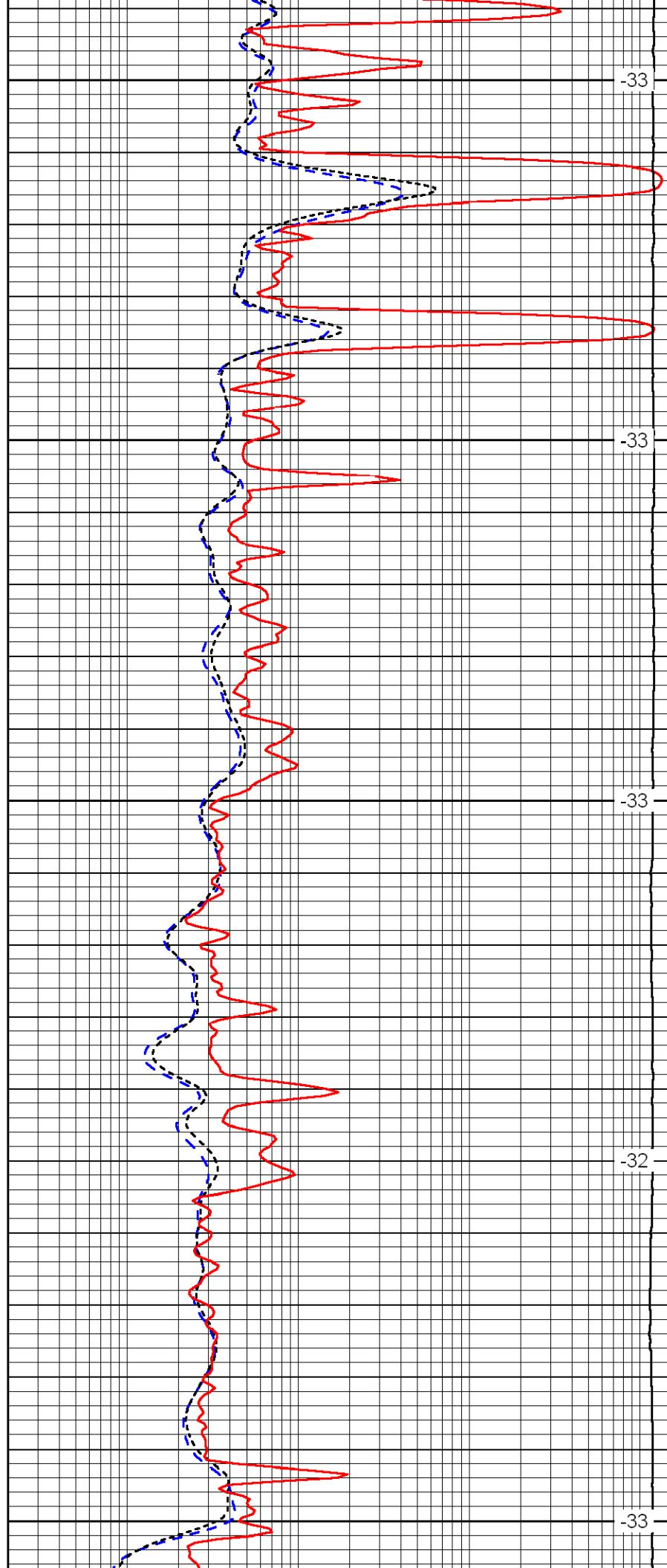
1850

1900

1950

2000

2050



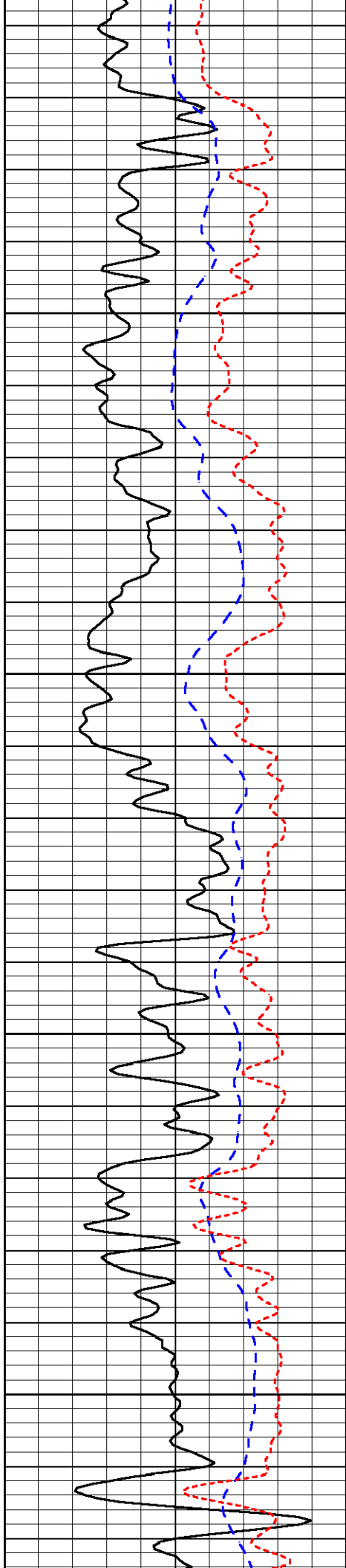
-33

-33

-33

-32

-33

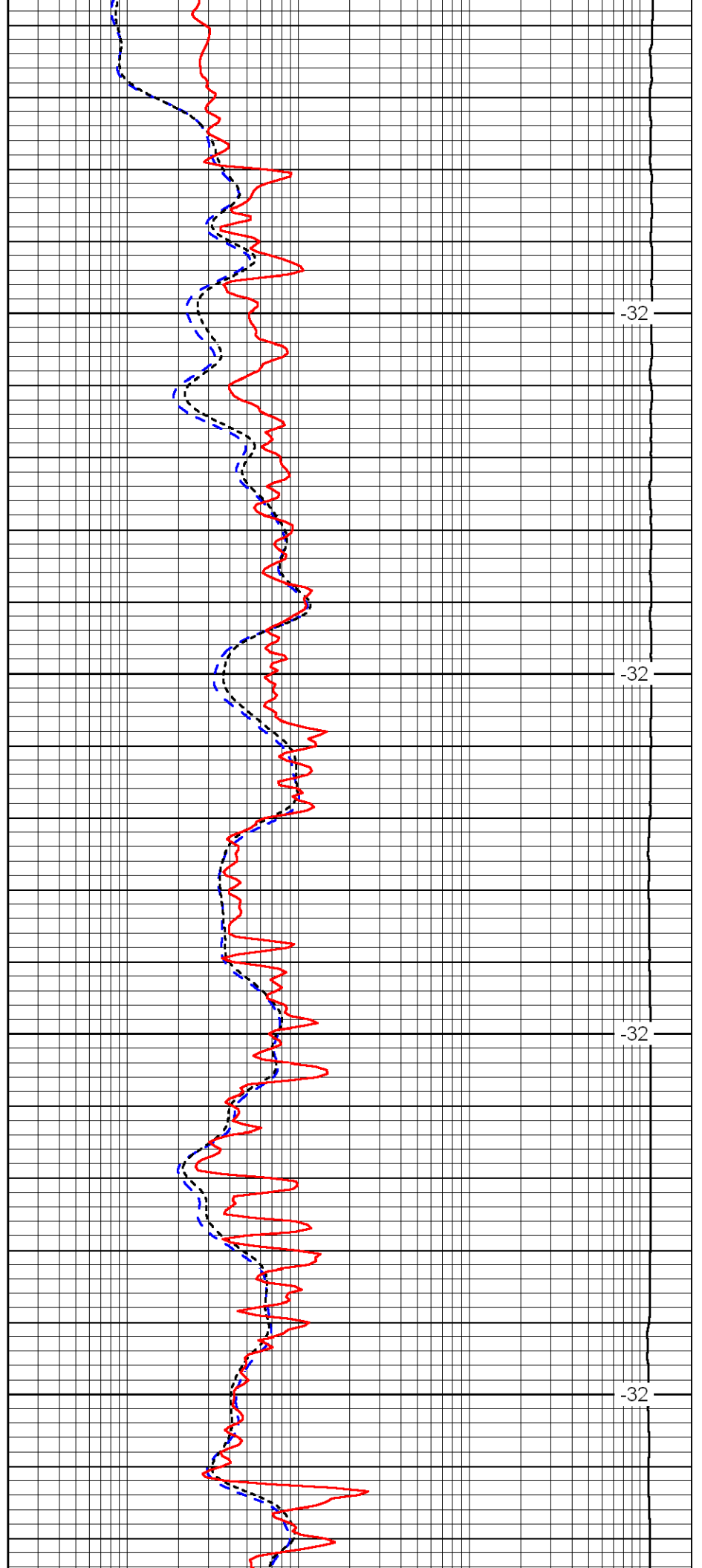


2100

2150

2200

2250

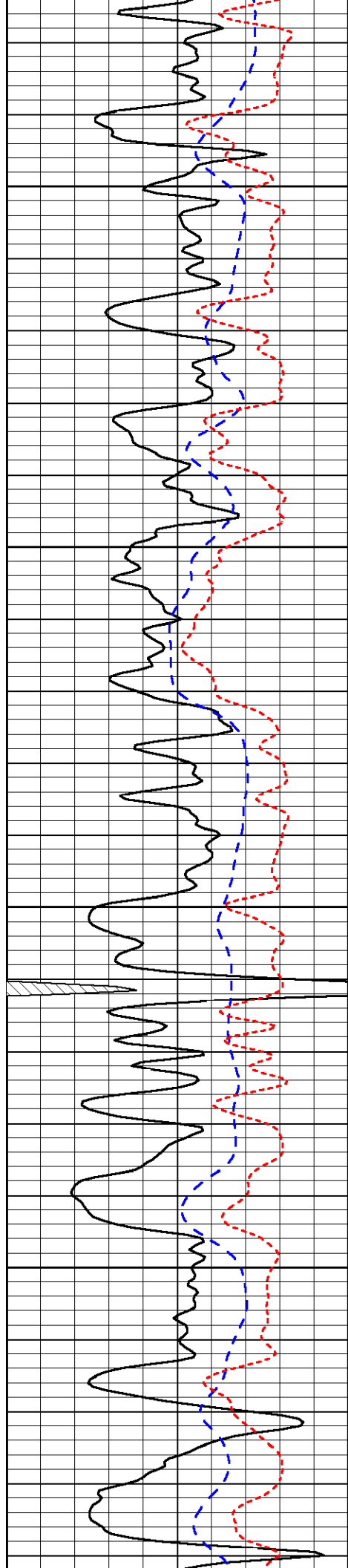


-32

-32

-32

-32

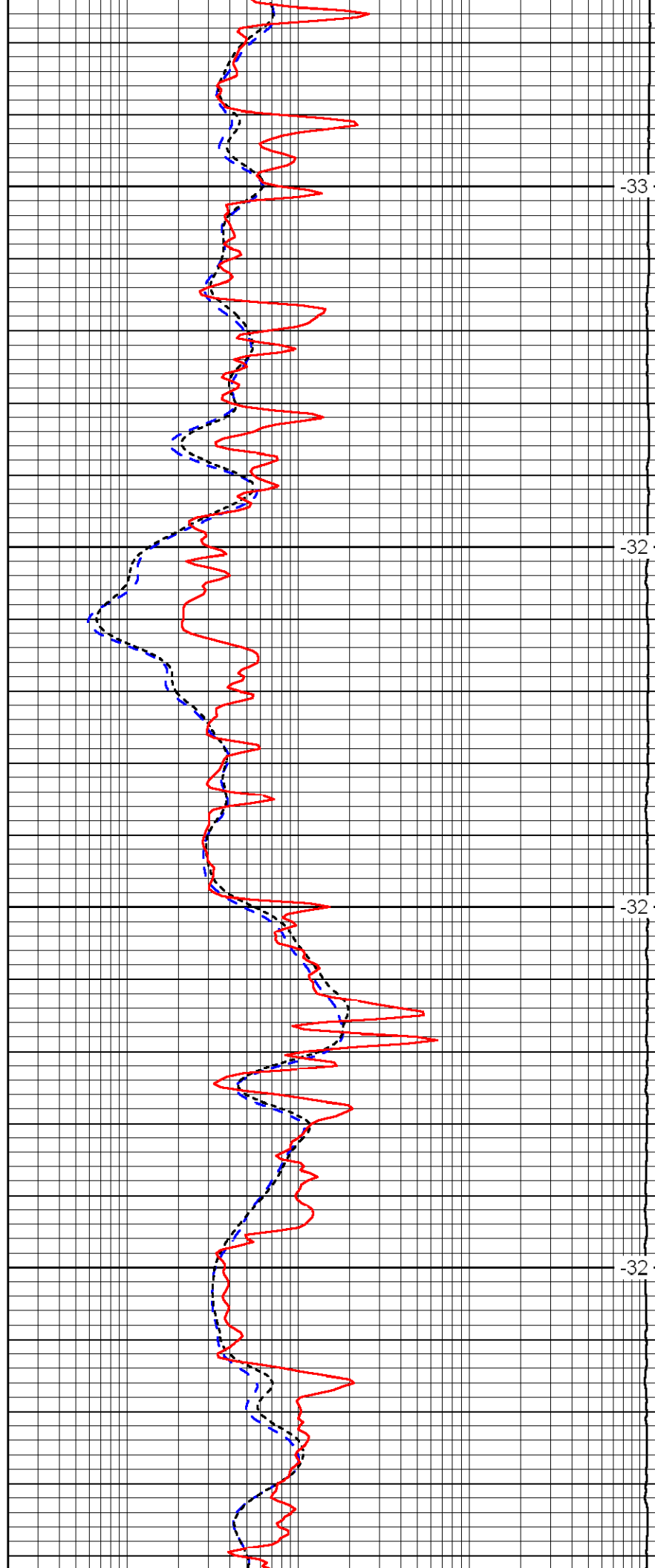


2300

2350

2400

2450

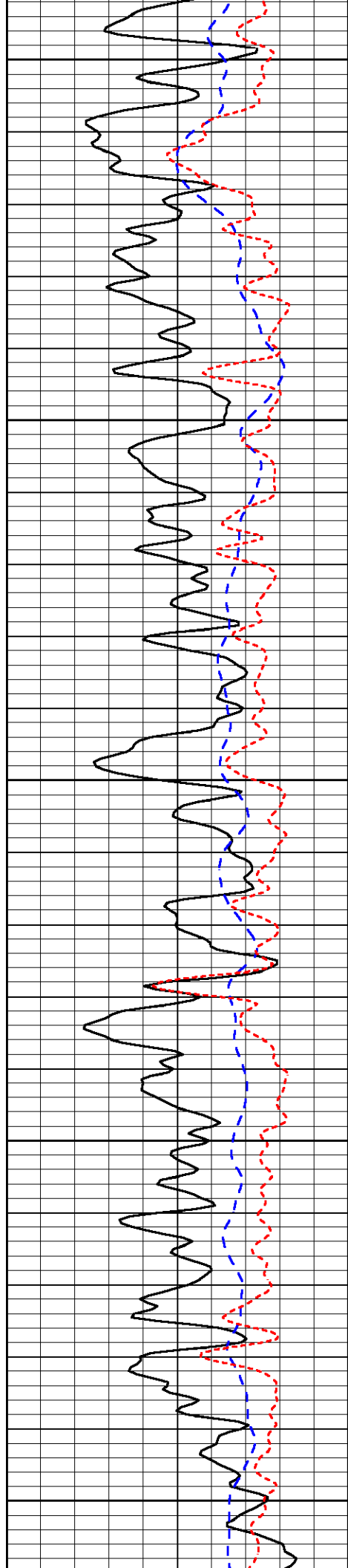


-33

-32

-32

-32



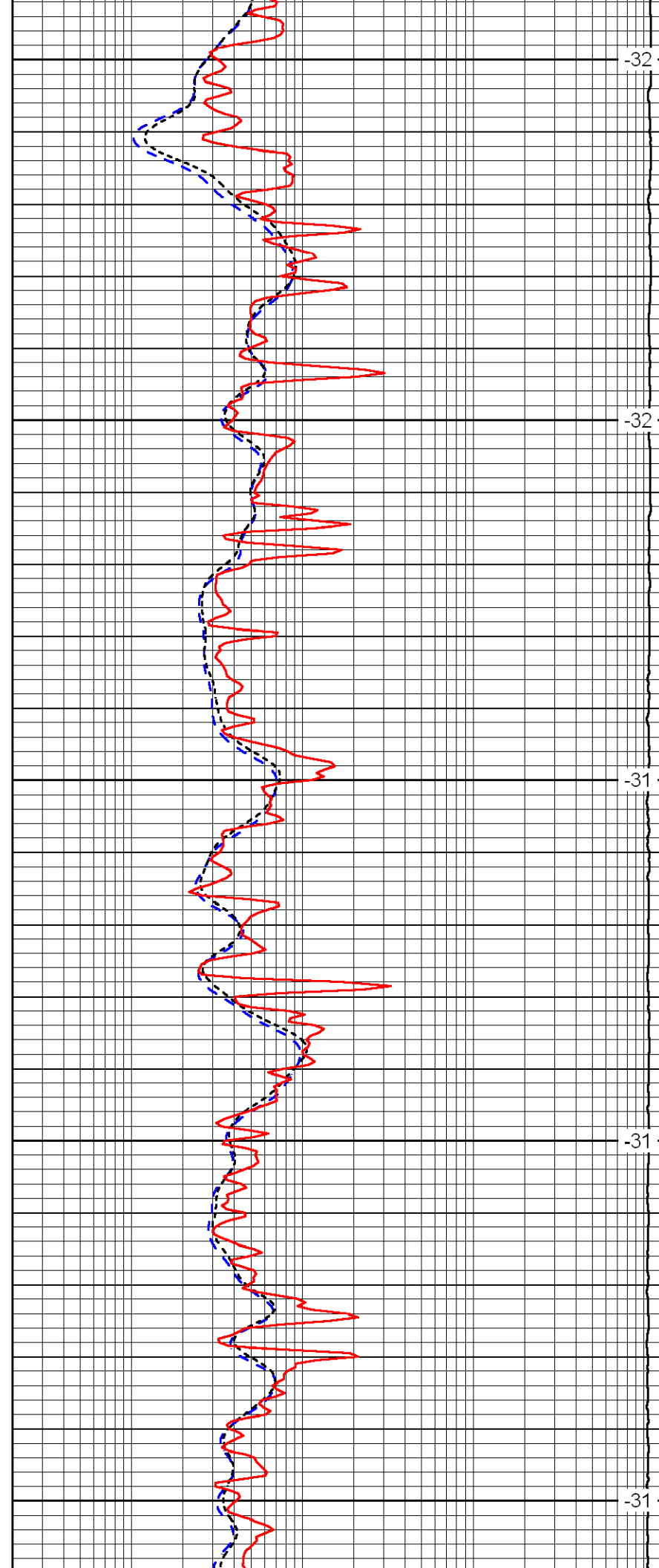
2500

2550

2600

2650

2700



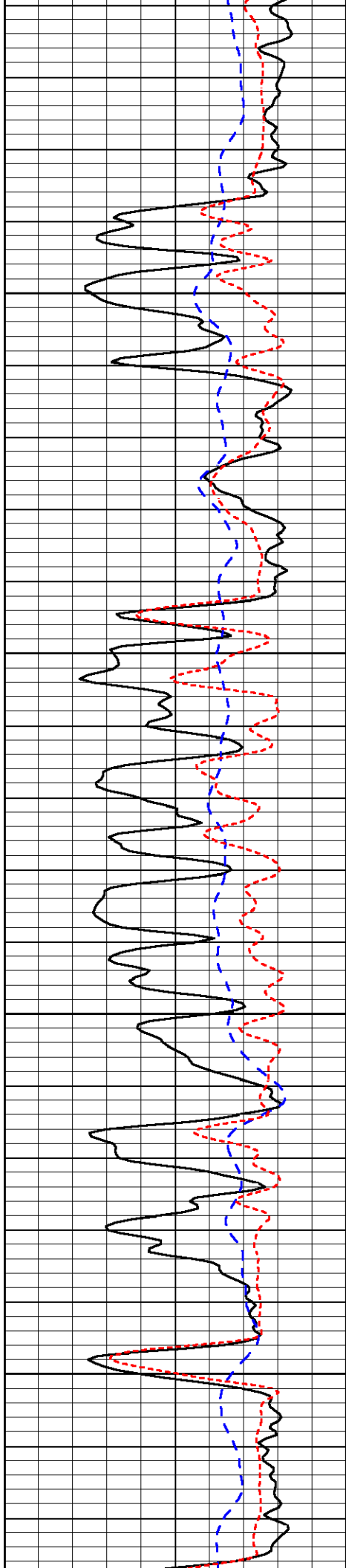
-32

-32

-31

-31

-31

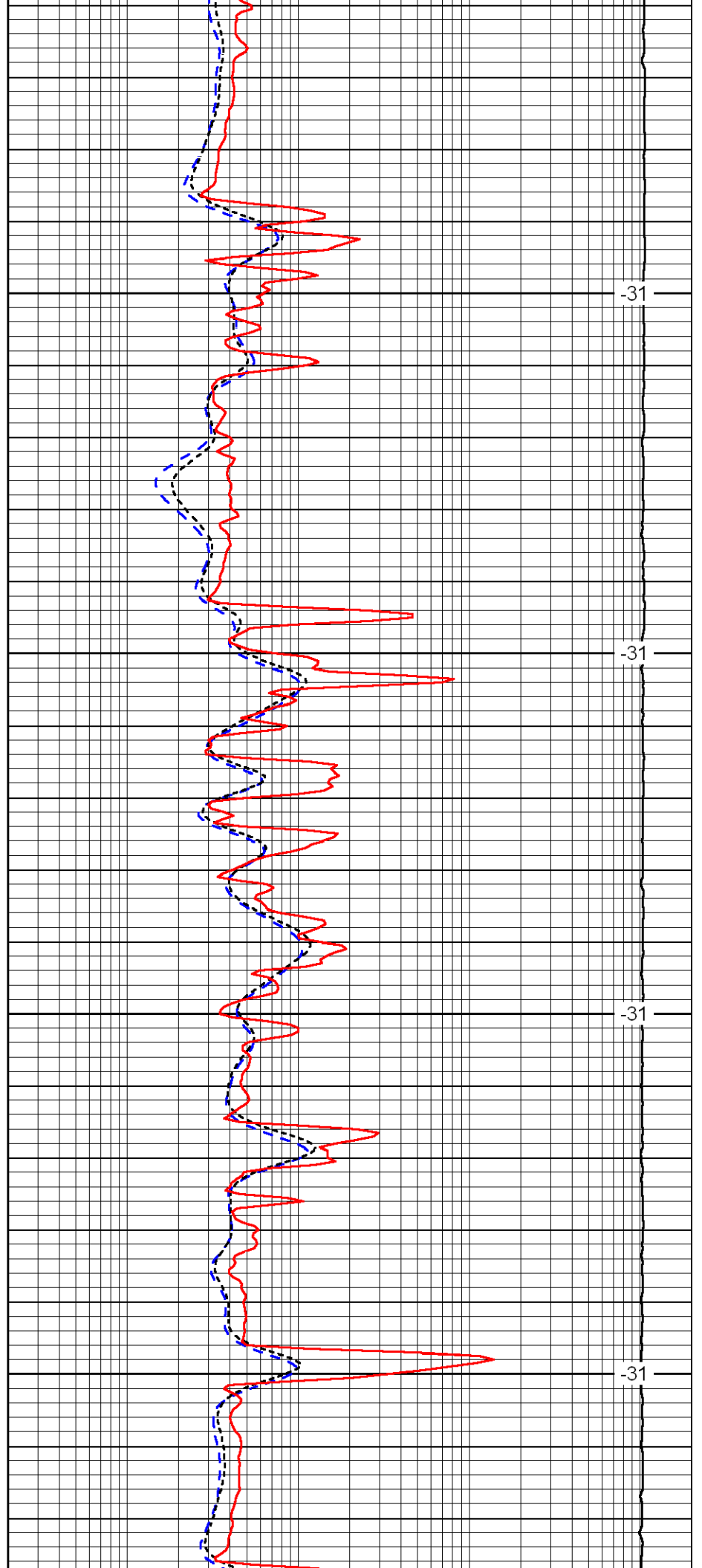


2750

2800

2850

2900

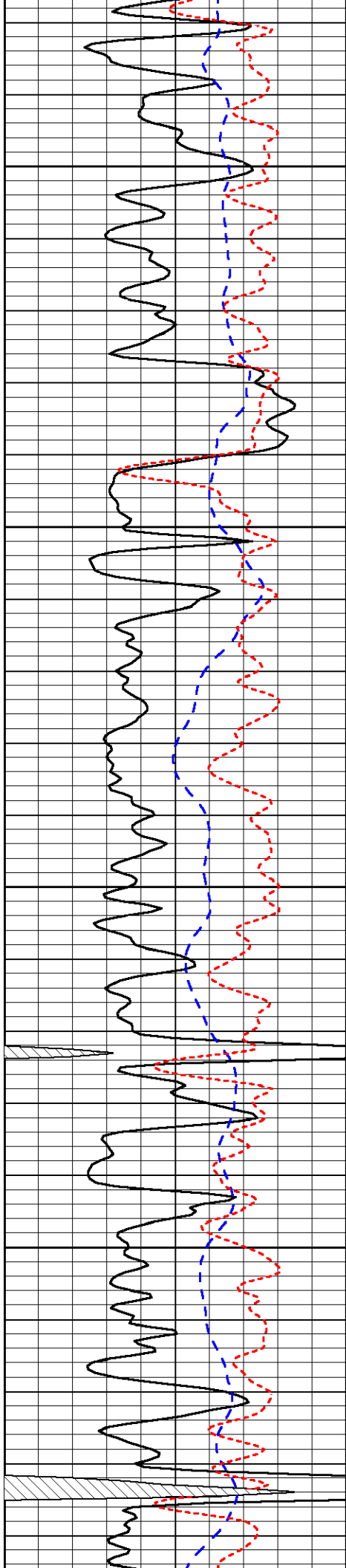


-31

-31

-31

-31

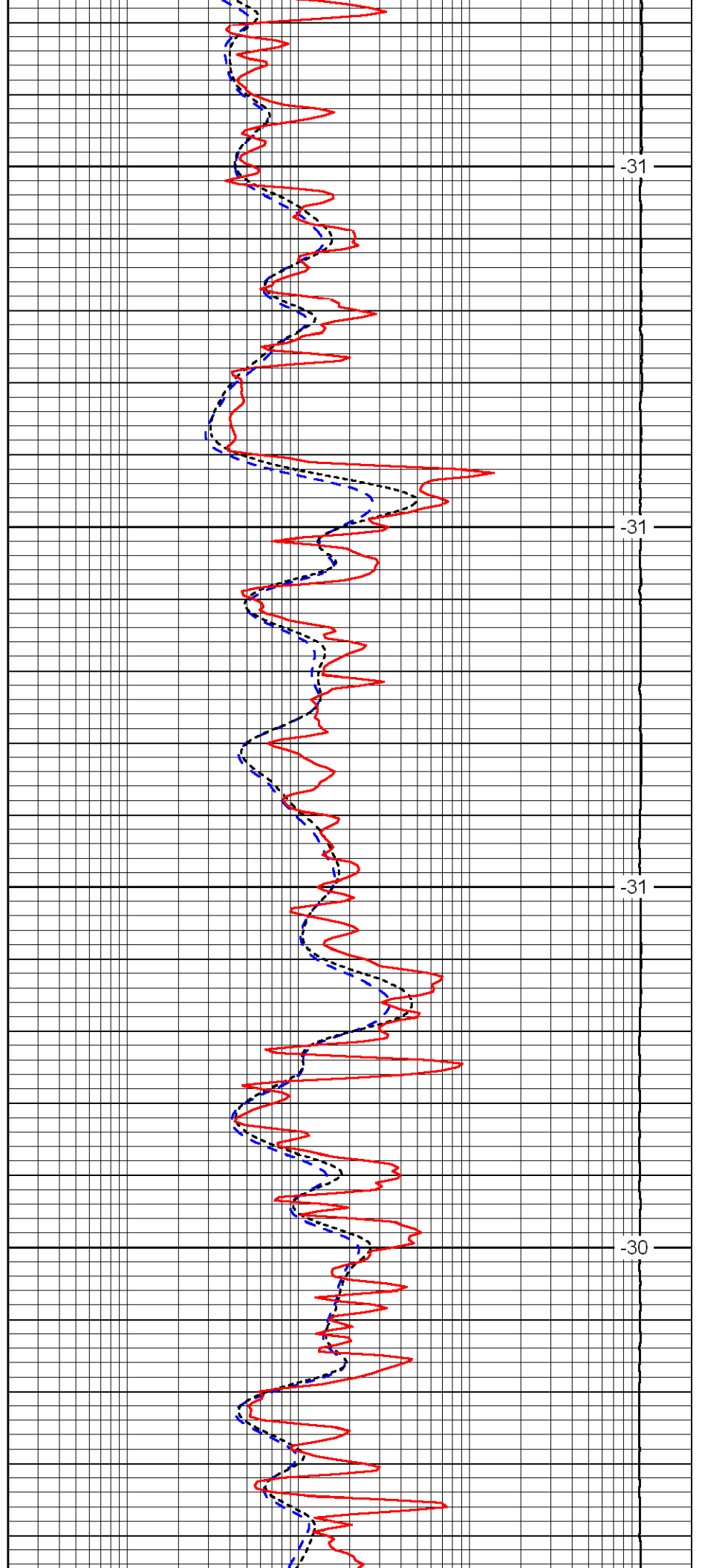


2950

3000

3050

3100

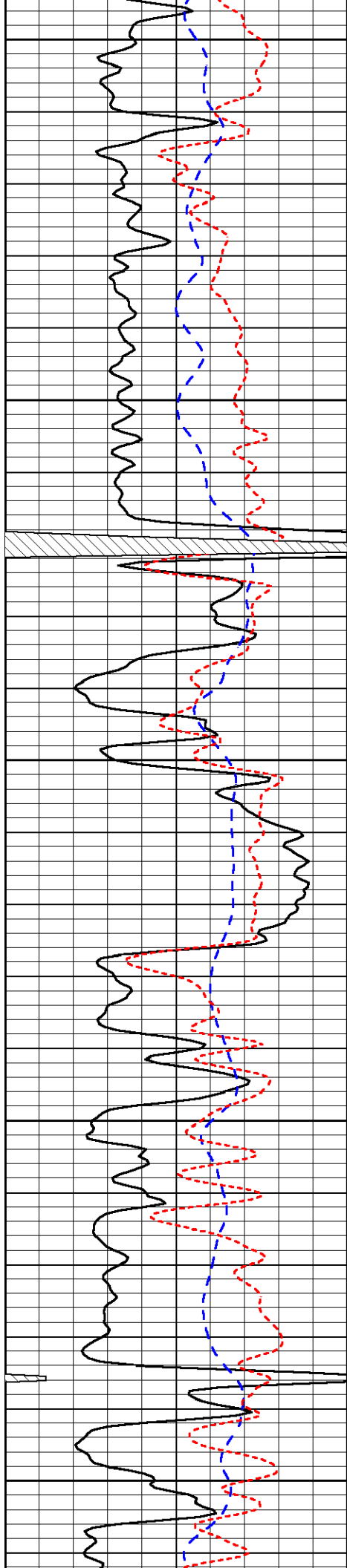


-31

-31

-31

-30



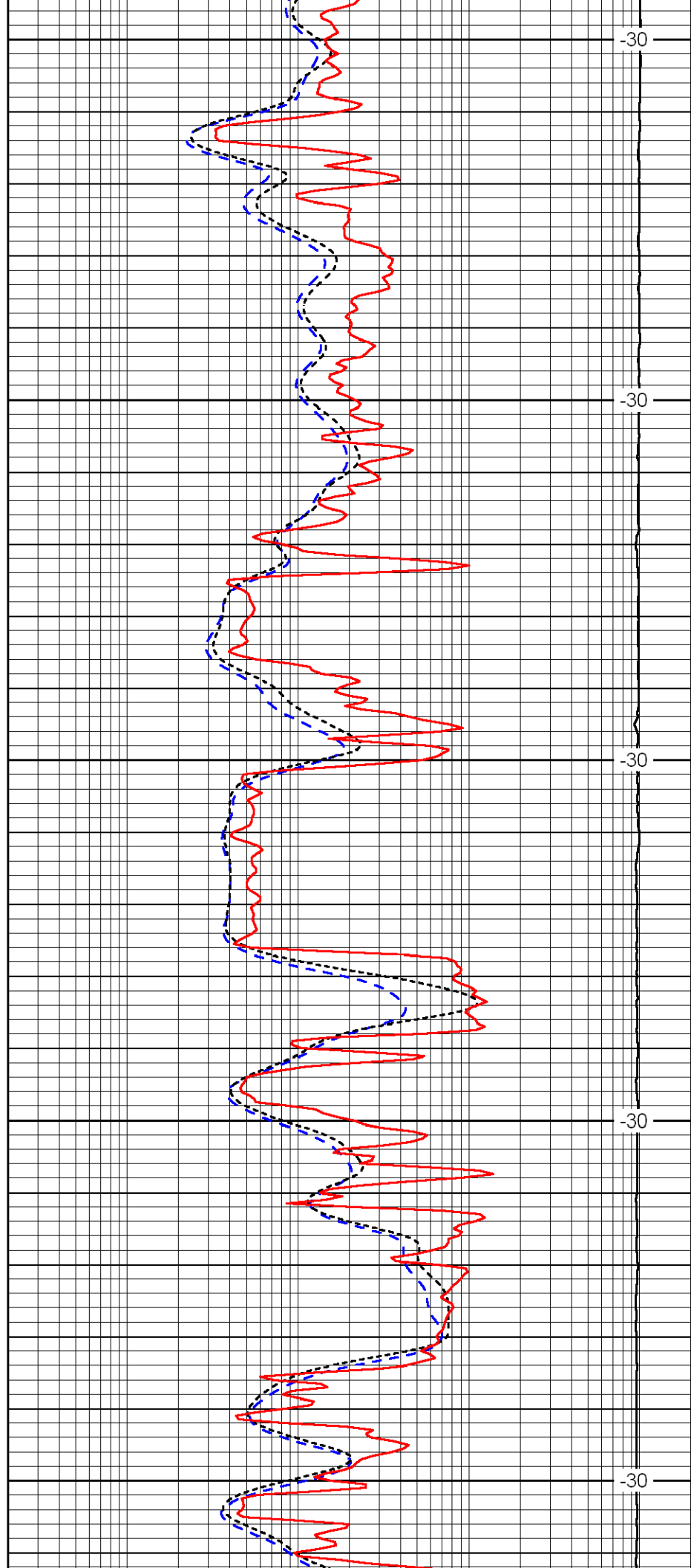
3150

3200

3250

3300

3350



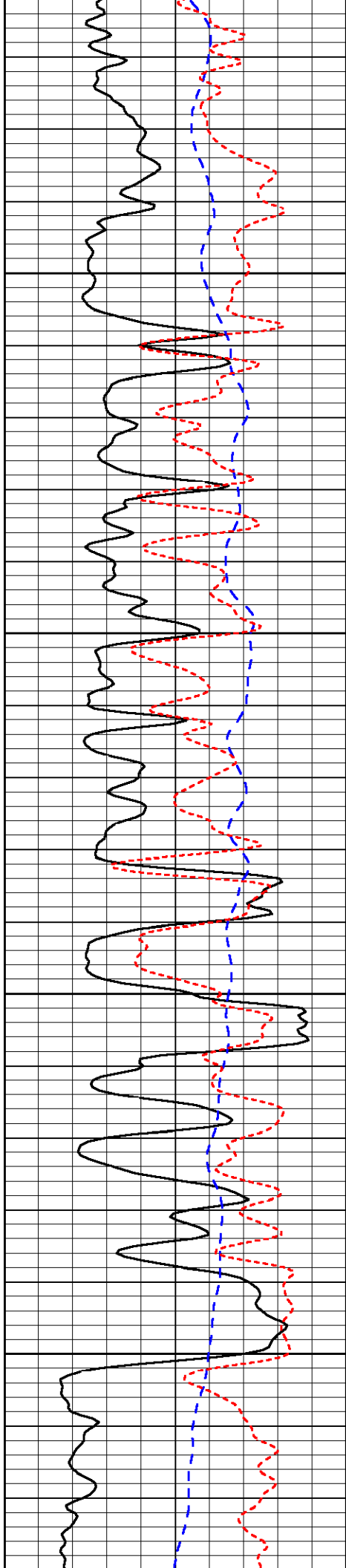
-30

-30

-30

-30

-30

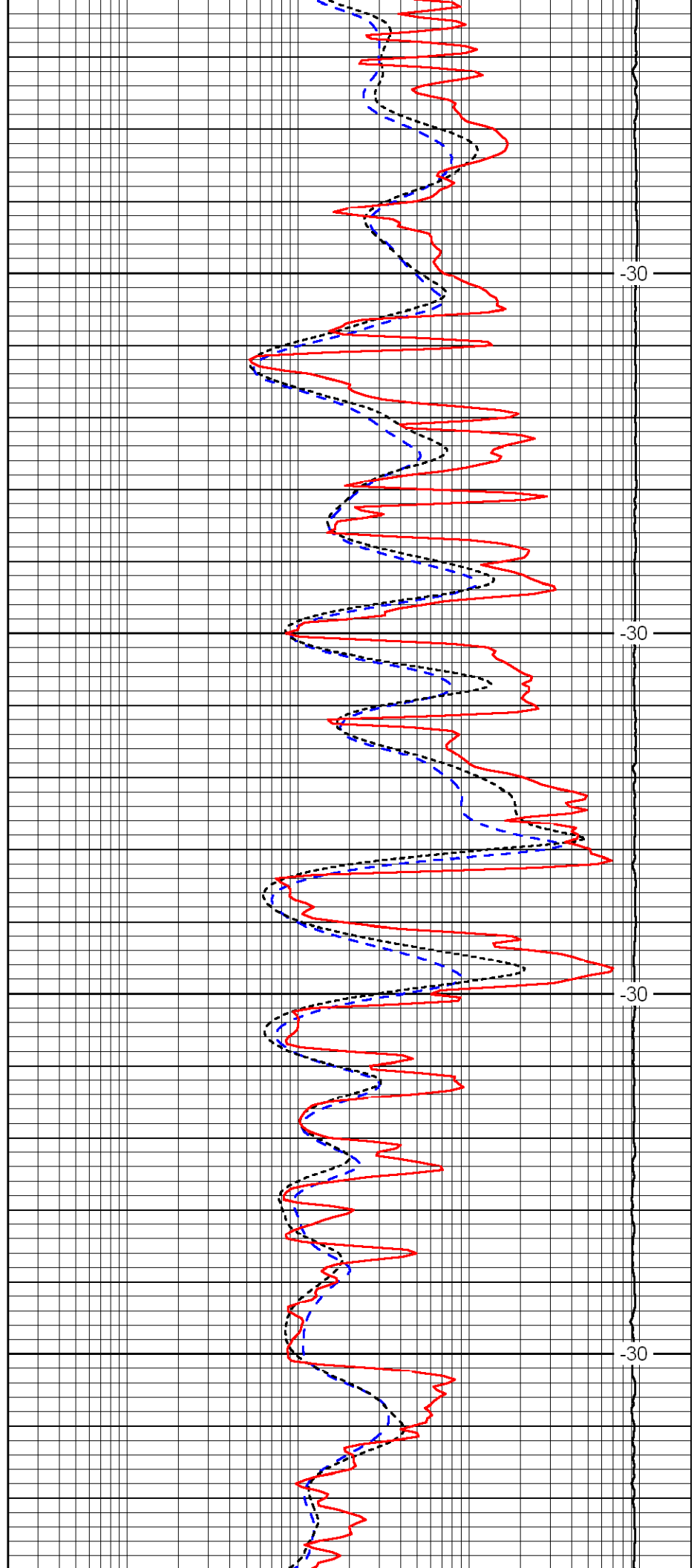


3400

3450

3500

3550

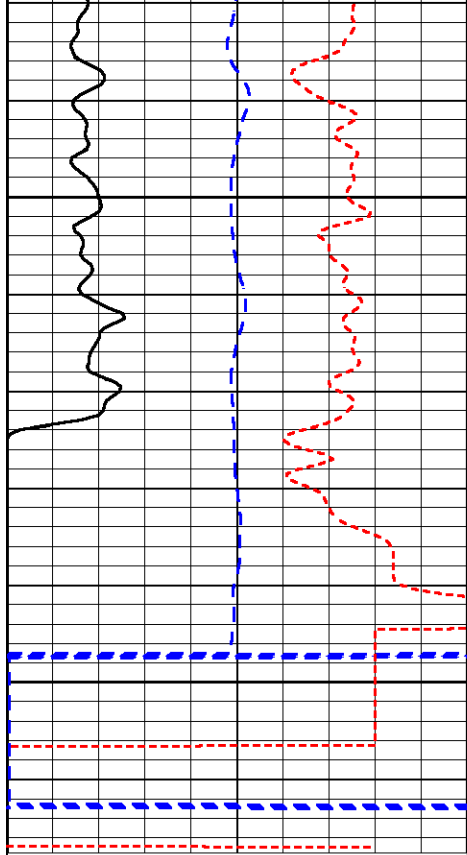


-30

-30

-30

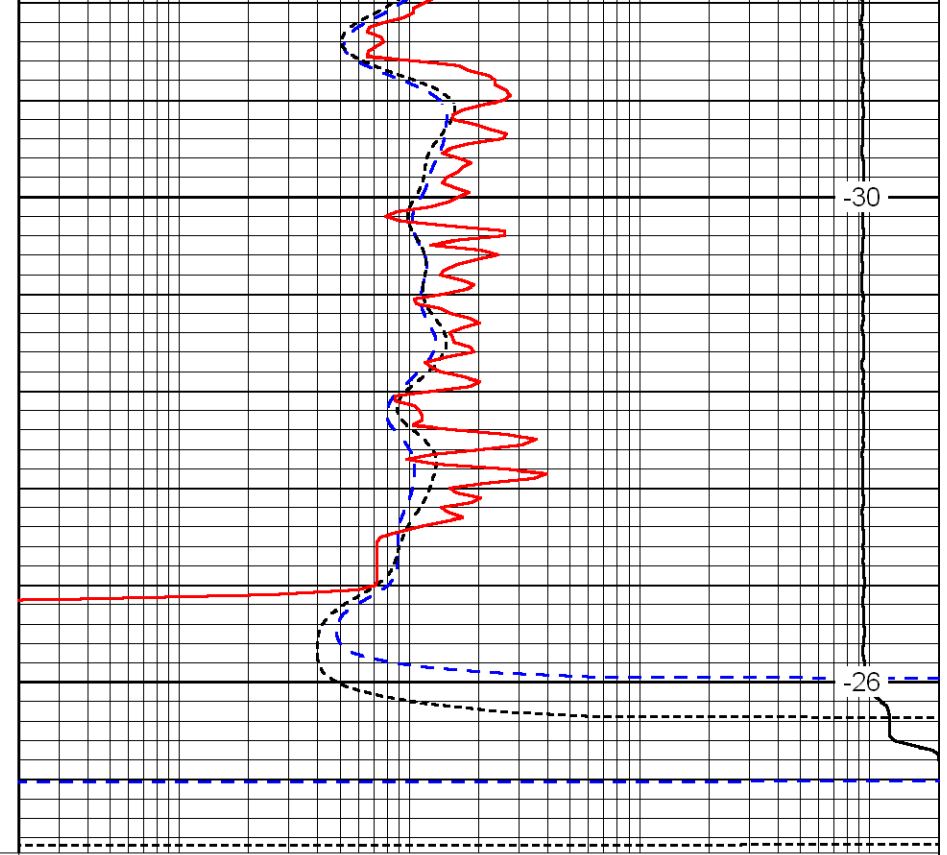
-30



0	Gamma Ray	150
-200	SP	0
-160	Rxo / Rt	40

3600

3650



-30

-26

0.2	Deep Resistivity	2000
0.2	Medium Resistivity	2000
0.2	Shallow Resistivity	2000
15000	Line Tension	0

LSPD