



Dual Compensated Porosity Log

DIGITAL LOG (785) 625-3858

API No. 15-109-20,910-00-00

Company Carmen Schmitt, Inc.
Well Sharpe Beckman No. 1
Field Wildcat
County Logan State Kansas

Location SE - SE - NE - SE
1440' FSL & 100' FEL

Other Services DIL

Sec: 11 Twp: 13 S Rge: 34 W

Permanent Datum Ground Level Elevation 2970
Log Measured From Kelly Bushing 10 Ft. Above Perm. Datum
Drilling Measured From Kelly Bushing

Elevation
K.B. 2980
D.F. 2970
G.L. 2970

Date	5/10/2010	
Run Number	One	
Type Log	CNL / CDL	
Depth Driller	4665	
Depth Logger	4663	
Bottom Logged Interval	4642	
Top Logged Interval	3700	
Type Fluid In Hole	Chemical	
Salinity, PPM CL	5000	
Density	9.4	
Level	Full	
Max. Rec. Temp. F	123	
Operating Rig Time	3 Hours	
Equipment -- Location	15 Hays	
Recorded By	B. Becker	
Witnessed By	Tom Funk	

Borehole Record				Casing Record			
Run No.	Bit	From	To	Size	Wgt.	From	To
1	12.25	00	224	8.625	24#	00	224
2	7.875	227	4665				

<<< Fold Here >>>

All interpretations are opinions based on inferences from electrical or other measurements and we cannot and do not guarantee the accuracy or correctness of any interpretation, and we shall not, except in the case of gross or willful negligence on our part, be liable or responsible for any loss, costs, damages, or expenses incurred or sustained by anyone resulting from any interpretation made by any of our officers, agents or employees. These interpretations are also subject to our general terms and conditions set out in our current Price Schedule.

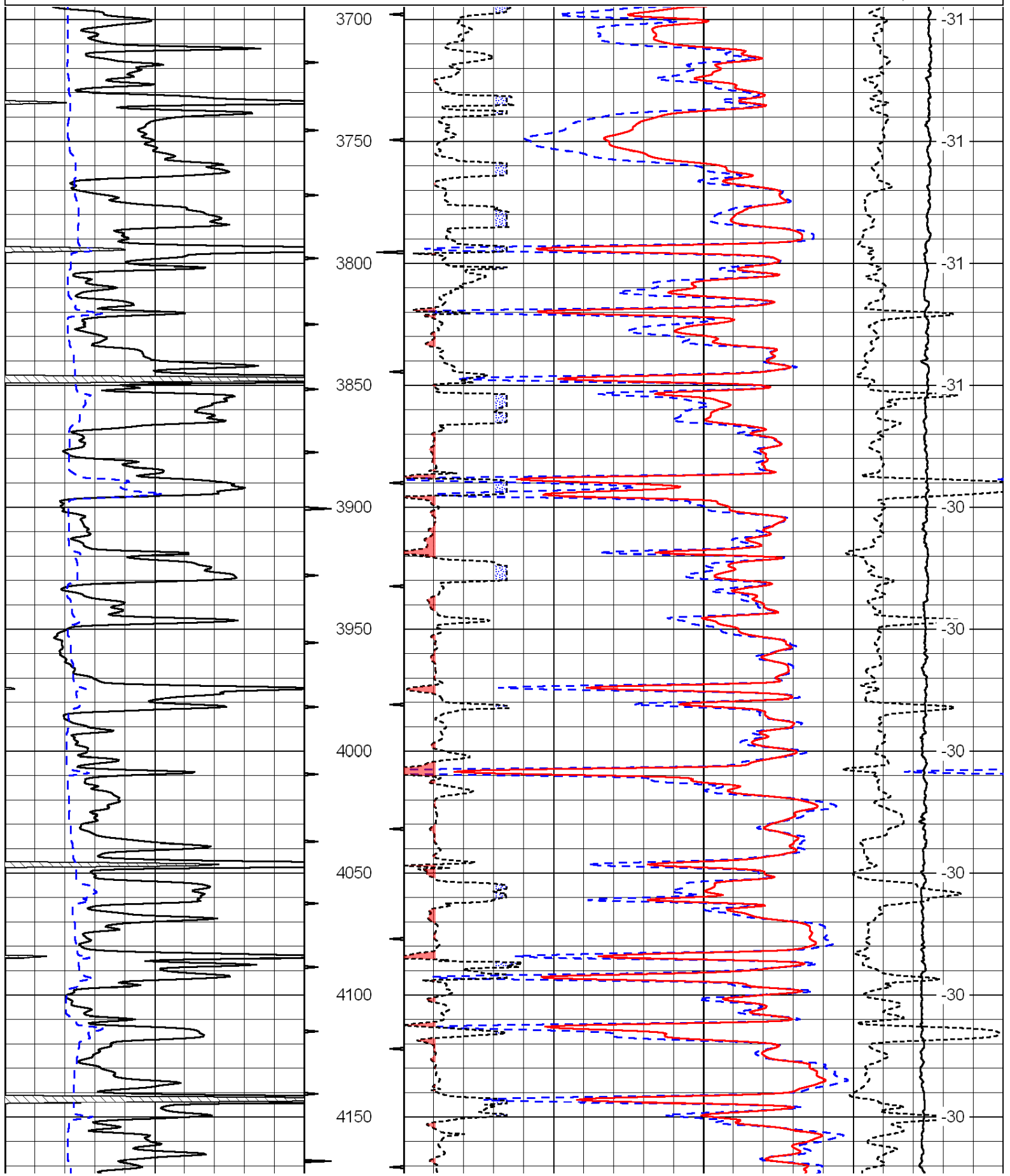
Comments

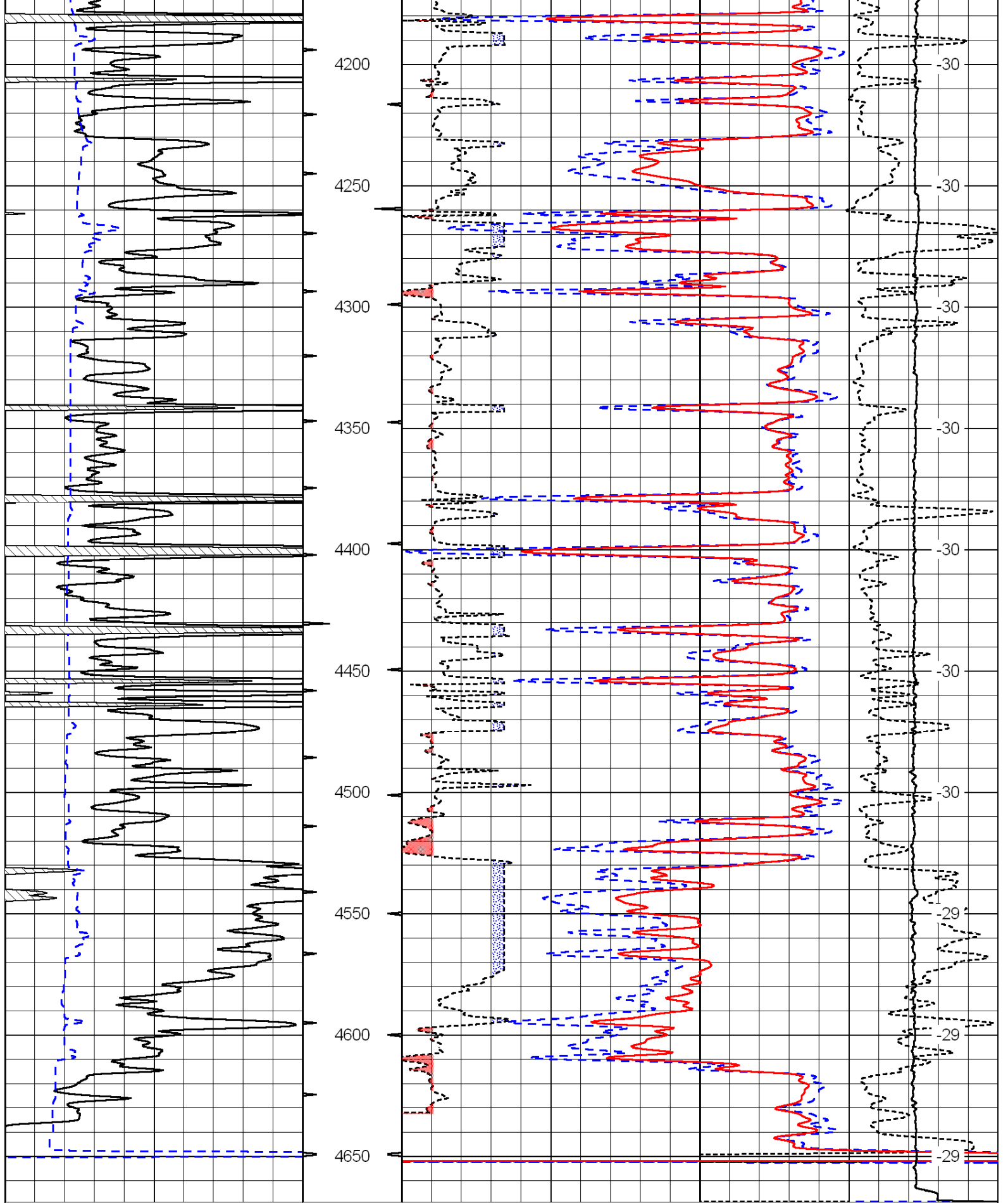
Thank you for using Log-Tech, Inc.
(785) 625-3858

Monument, Ks; 13 South to Plains Rd;
2 West; 1-1/4 North; West Into

0	Gamma Ray	150
6	Caliper (GAPI)	16

30	Compensated Density		-10
2	Bulk Density		3
15000	Line Tension		0
2.625	DGA	3.425	-0.25
			Correction
			0.25
LSPD			





0	Gamma Ray	150	30	Compensated Density	-10	
6	Caliper (GAPI)	16	2	Bulk Density	3	
			15000	Line Tension	0	
	2.625	DGA	3.425	-0.25	Correction	0.25
					ISPD	

Database File: c:\warrior\data\carmen schmitt_sharpe beckman no. 1\schmitthd.db
 Dataset Pathname: DIL/csstk
 Presentation Format: cndlspec
 Dataset Creation: Mon May 10 22:11:09 2010
 Charted by: Depth in Feet scaled 1:240

0	Gamma Ray	150	30	Compensated Neutron (Limestone)		-10
6	Caliper (GAPI)	16	30	Compensated Density (2.71 ma)		-10
		2.625	DGA	3.425	-0.25	Correction 0.25
		15000	Line Tension		0	

LSPD

