



DIGITAL LOG (785) 625-3858

Dual Induction Log

API No.	15-109-20,910-00-00	
Company	Carmen Schmitt, Inc.	
Well	Sharpe Beckman No. 1	
Field	Wildcat	
County	Logan	State Kansas
Location	SE - SE - NE - SE 1440' FSL & 100' FEL	
Other Services	CNL/CDL	
Sec:	11	Twp: 13 S Rge: 34 W
Permanent Datum	Ground Level	Elevation 2970
Log Measured From	Kelly Bushing	10 Ft. Above Perm. Datum
Drilling Measured From	Kelly Bushing	
Elevation	K.B. 2980 D.F. 2970 G.L. 2970	

Date	5/10/2010
Run Number	One
Depth Driller	4665
Depth Logger	4663
Bottom Logged Interval	4662
Top Log Interval	200
Casing Driller	8.625 @ 224
Casing Logger	220
Bit Size	7.875
Type Fluid in Hole	Chemical
Salinity, ppm CL	5000
Density / Viscosity	9.4 62
pH / Fluid Loss	9.5 11.2
Source of Sample	Flowline
Rm @ Meas. Temp	1.60 @ 55
Rmf @ Meas. Temp	1.20 @ 55
Rmc @ Meas. Temp	2.16 @ 55
Source of Rmf / Rmc	Charts
Rm @ BHT	0.72 @ 123
Operating Rig Time	3 Hours
Max Rec. Temp. F	123
Equipment Number	15
Location	Hays
Recorded By	B. Becker
Witnessed By	Tom Funk

<<< Fold Here >>>

All interpretations are opinions based on inferences from electrical or other measurements and we cannot and do not guarantee the accuracy or correctness of any interpretation, and we shall not, except in the case of gross or willful negligence on our part, be liable or responsible for any loss, costs, damages, or expenses incurred or sustained by anyone resulting from any interpretation made by any of our officers, agents or employees. These interpretations are also subject to our general terms and conditions set out in our current Price Schedule.

Comments

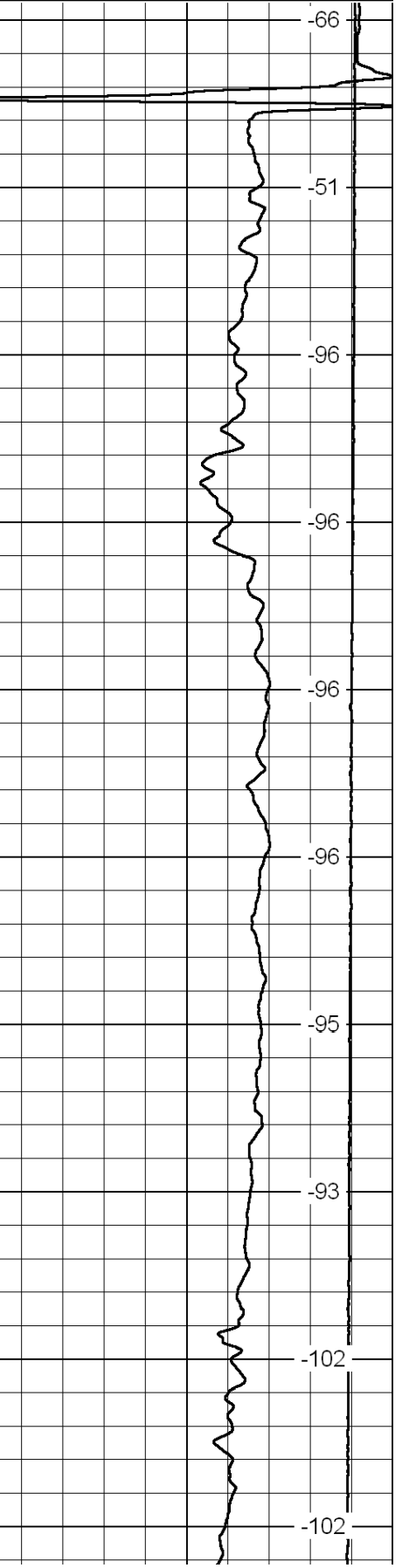
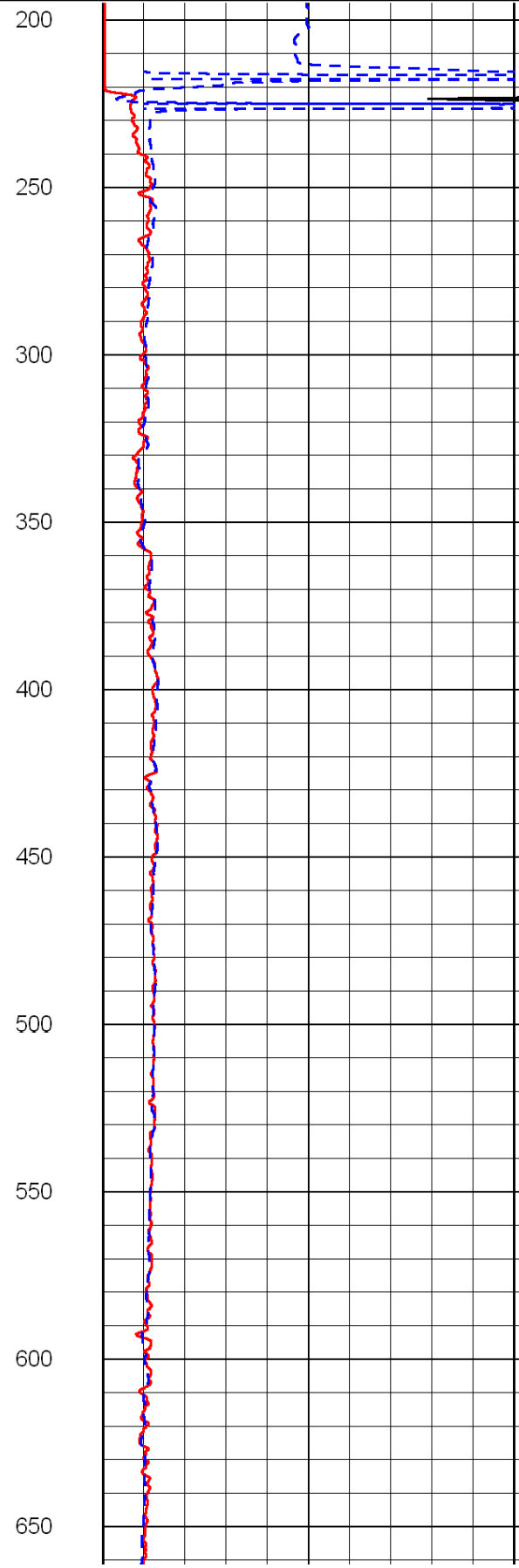
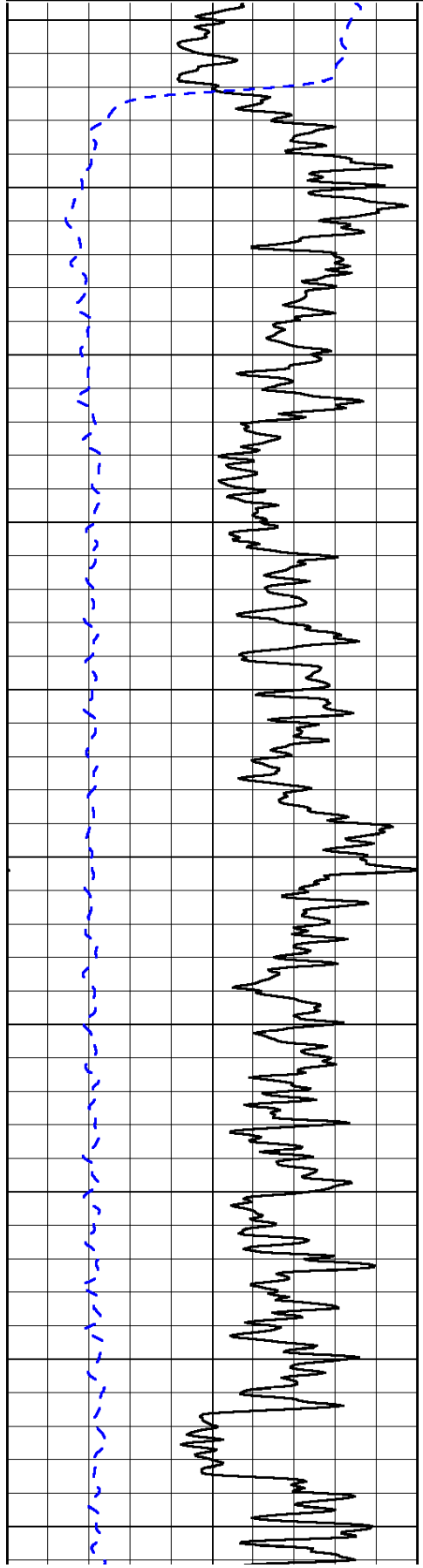
Thank you for using Log-Tech, Inc.
(785) 625-3858

Monument, Ks; 13 South to Plains Rd;
2 West; 1-1/4 North; West Into

0	Gamma Ray	150
-200	SP (mV)	0

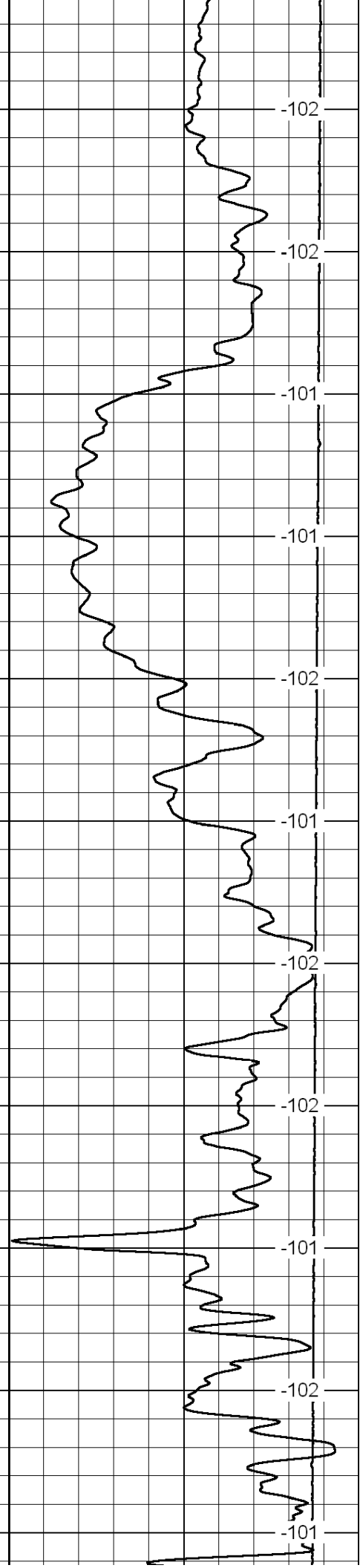
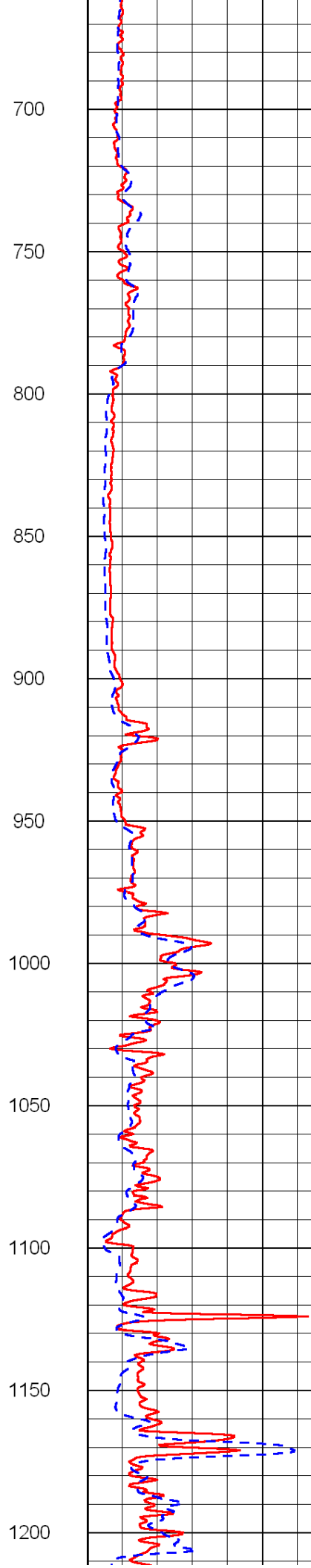
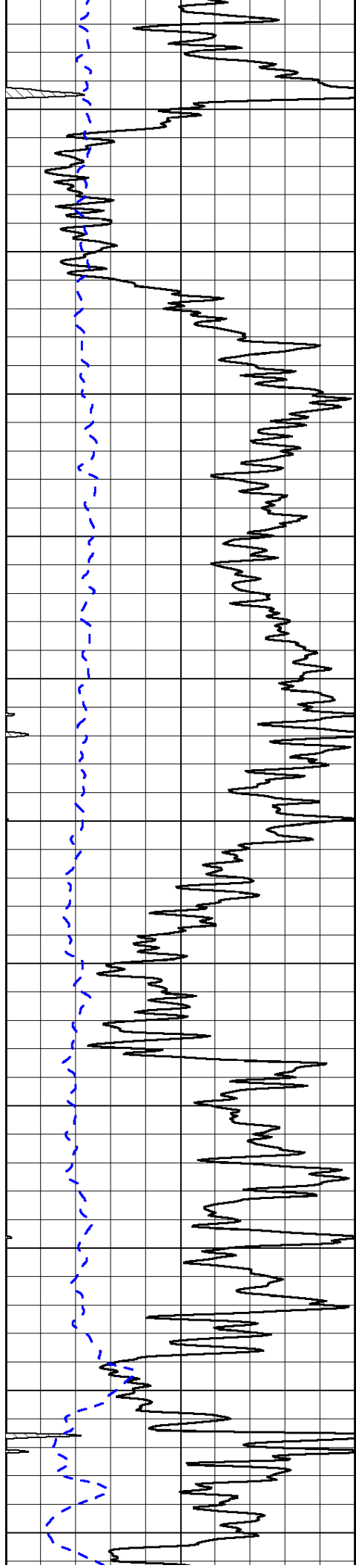
0	Shallow Resistivity	50
0	Deep Resistivity	50
1000	Conductivity	0
15000	Line Tension	0
50	Shallow Resistivity	500
50	Deep Resistivity	500

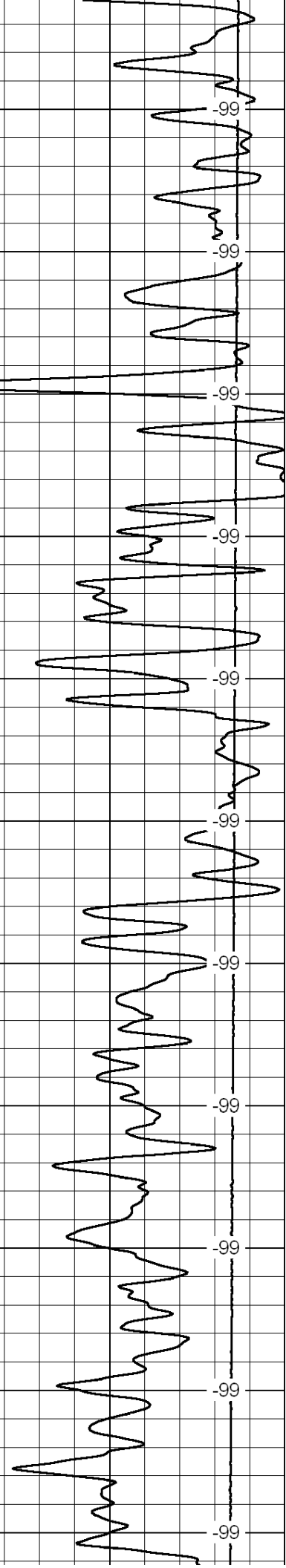
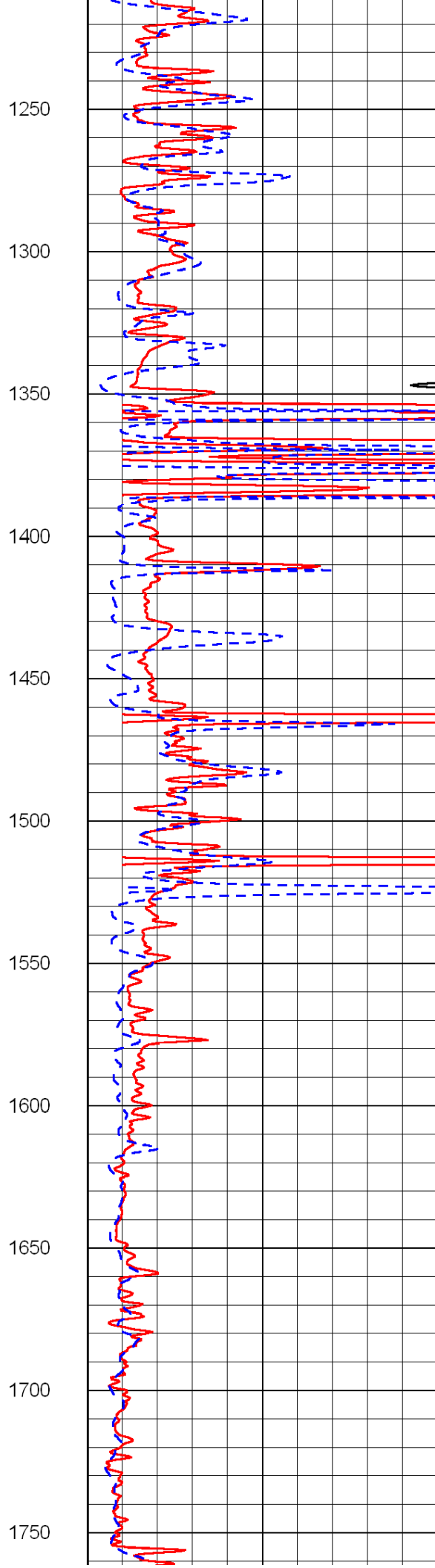
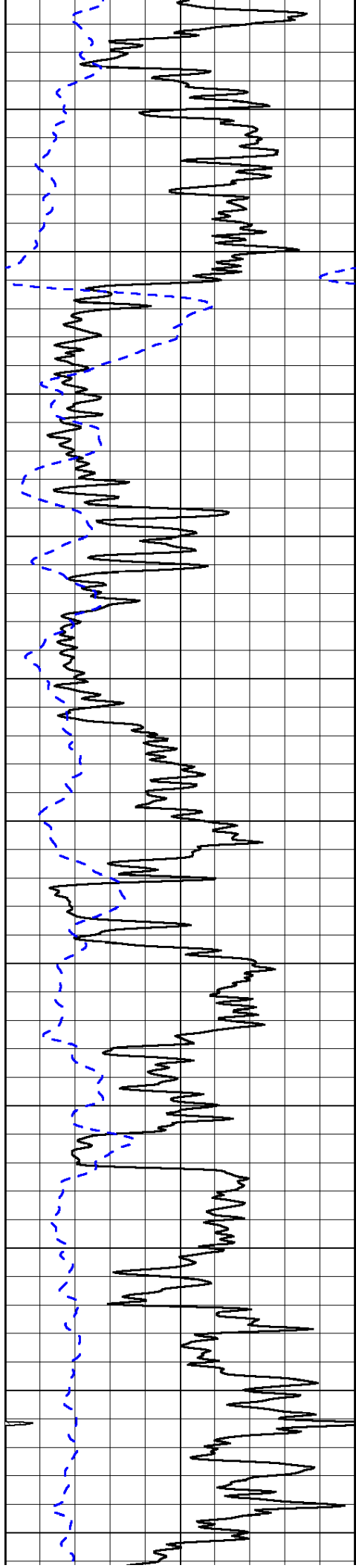
LSPD

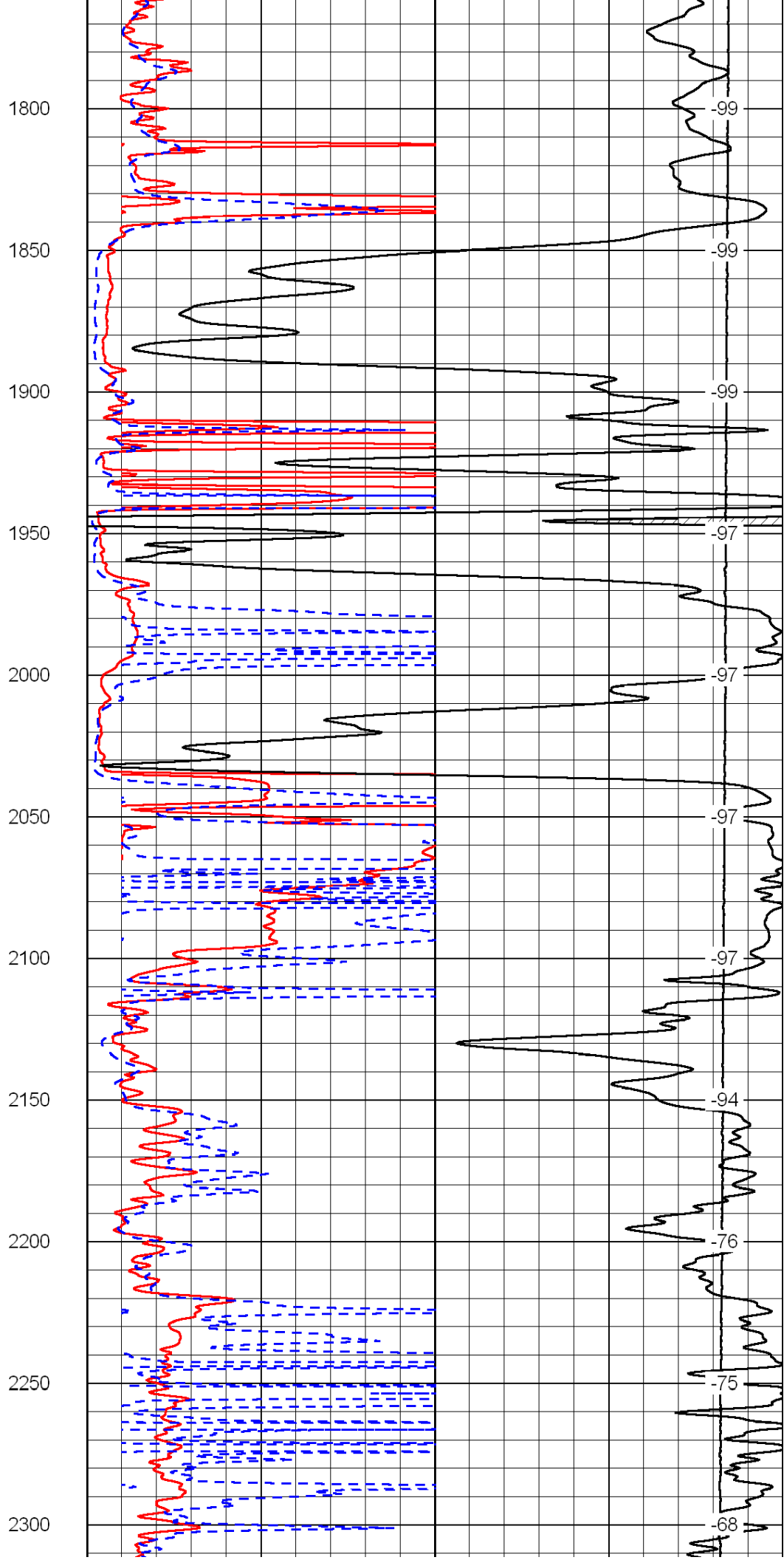
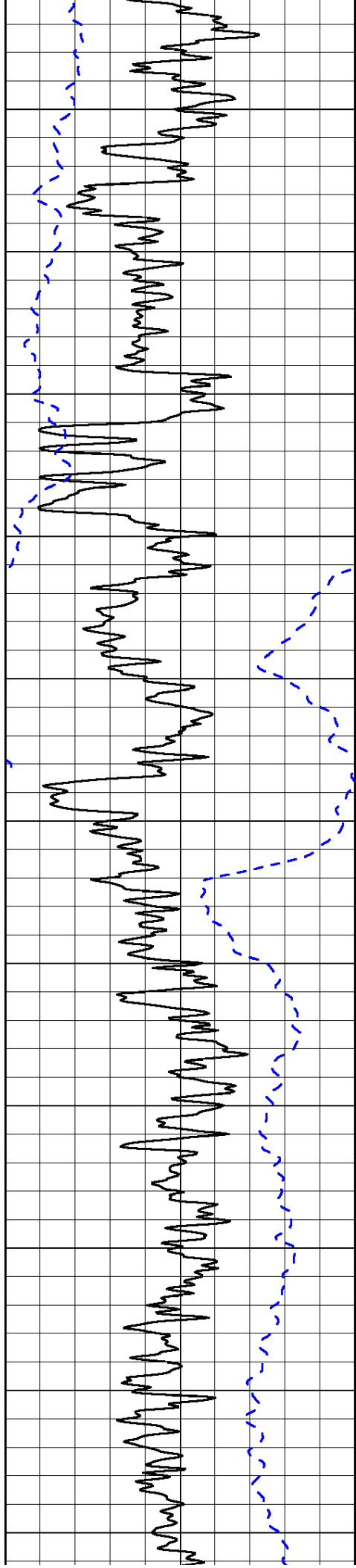


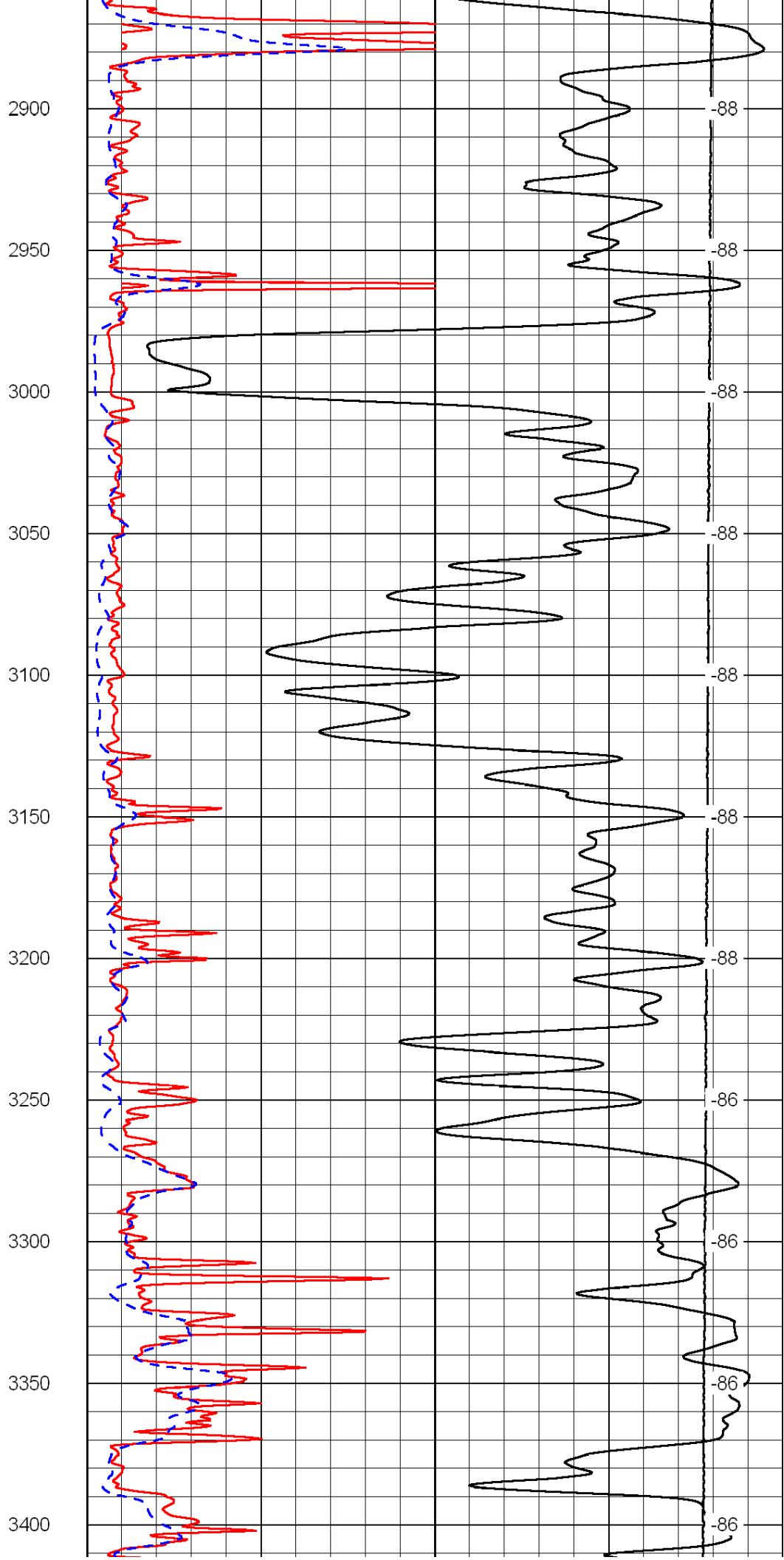
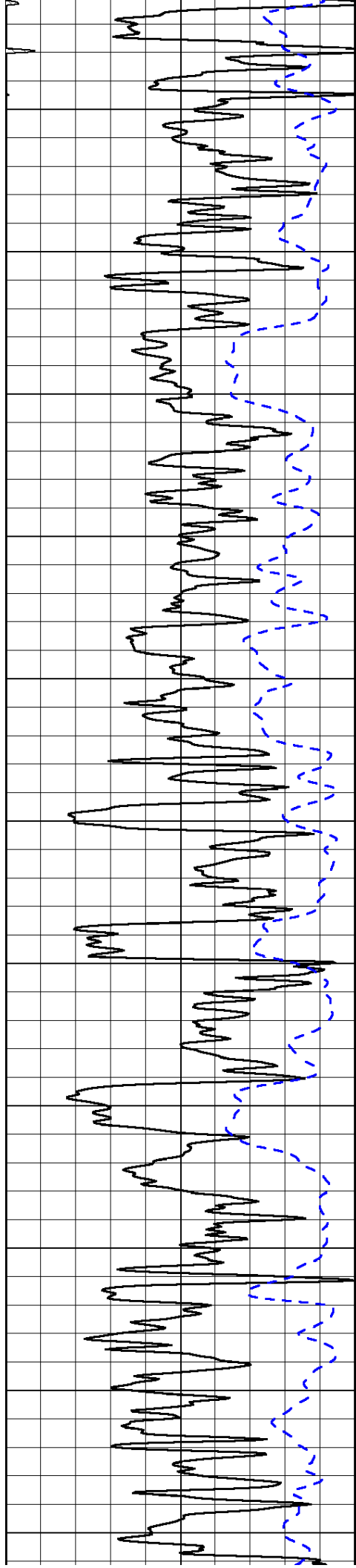
200
250
300
350
400
450
500
550
600
650

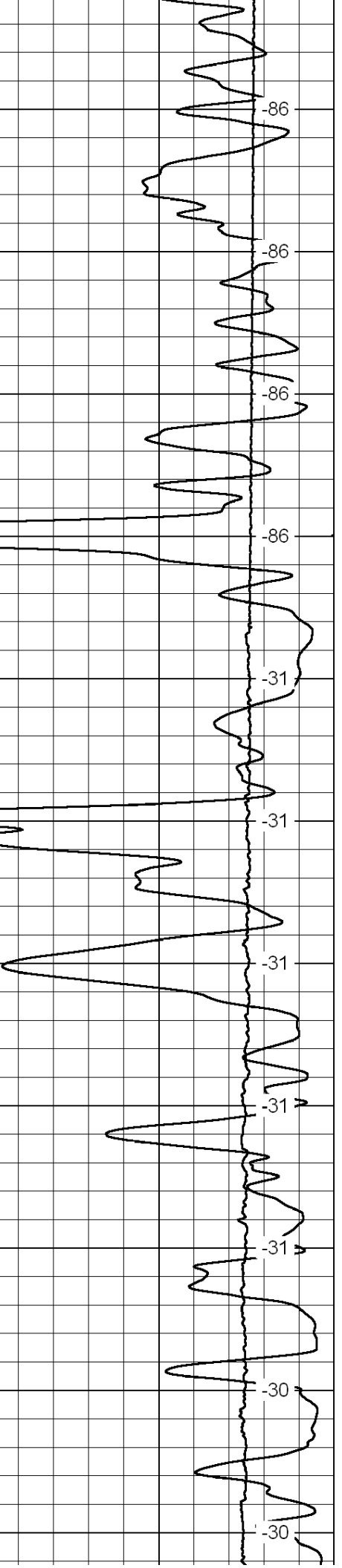
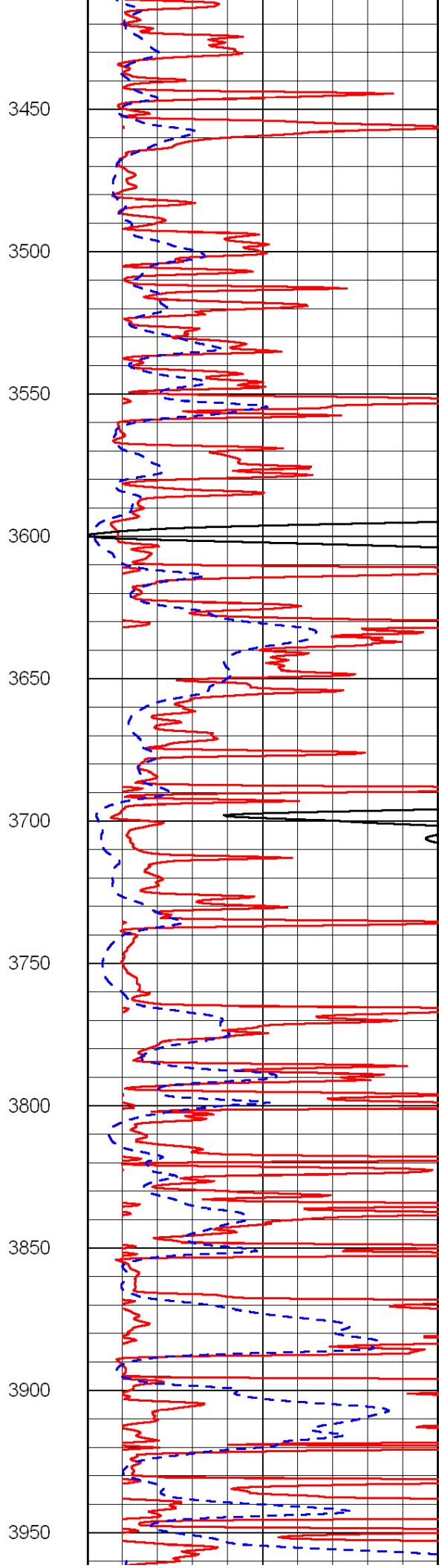
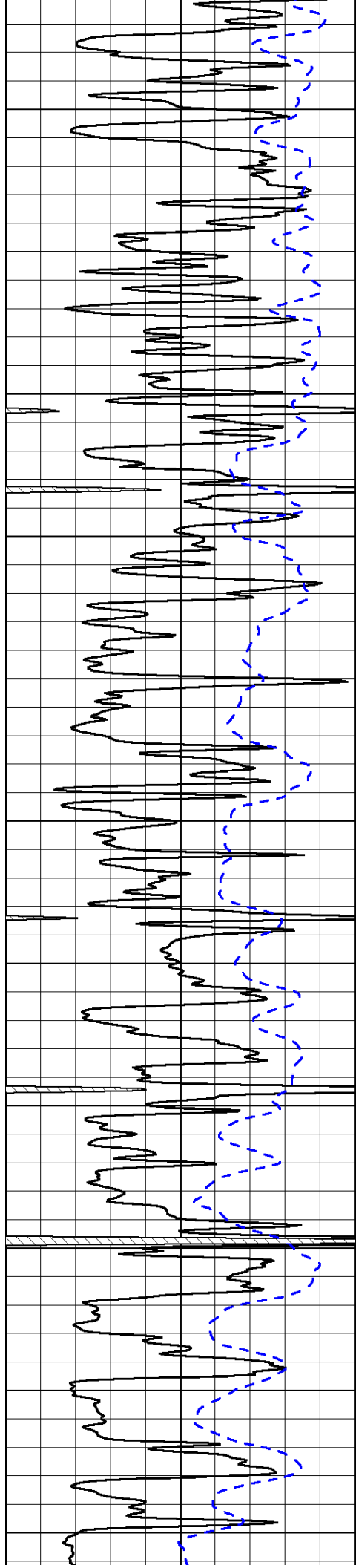
-66
-51
-96
-96
-96
-96
-96
-95
-93
-102
-102

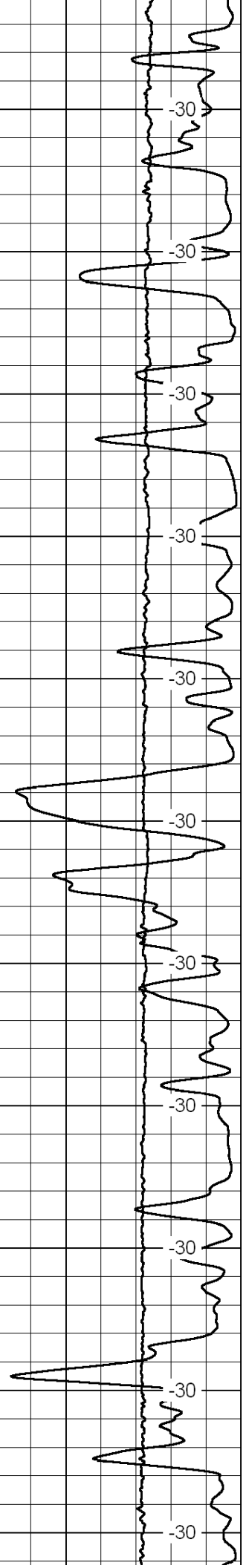
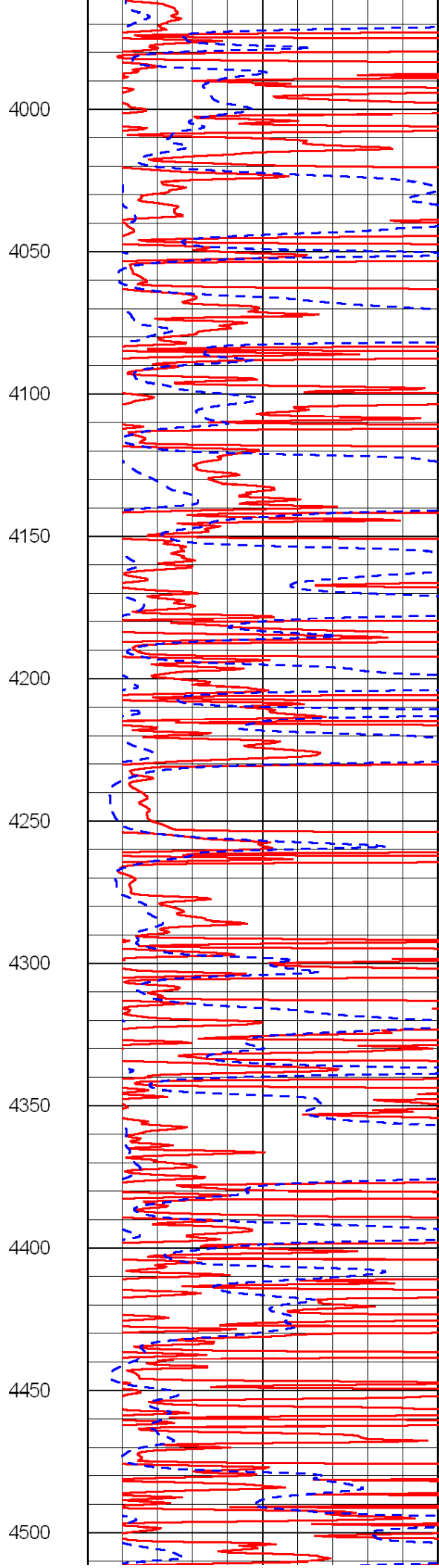
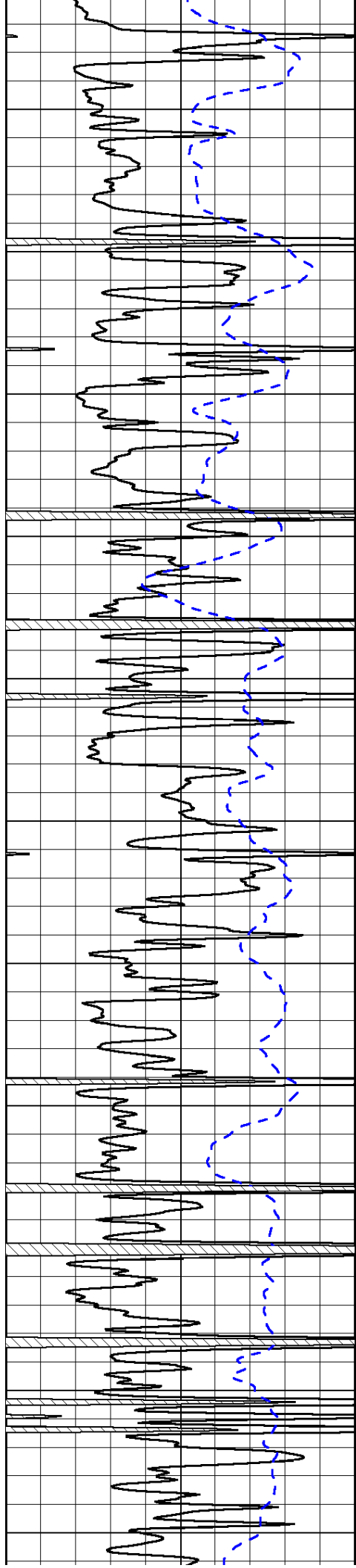


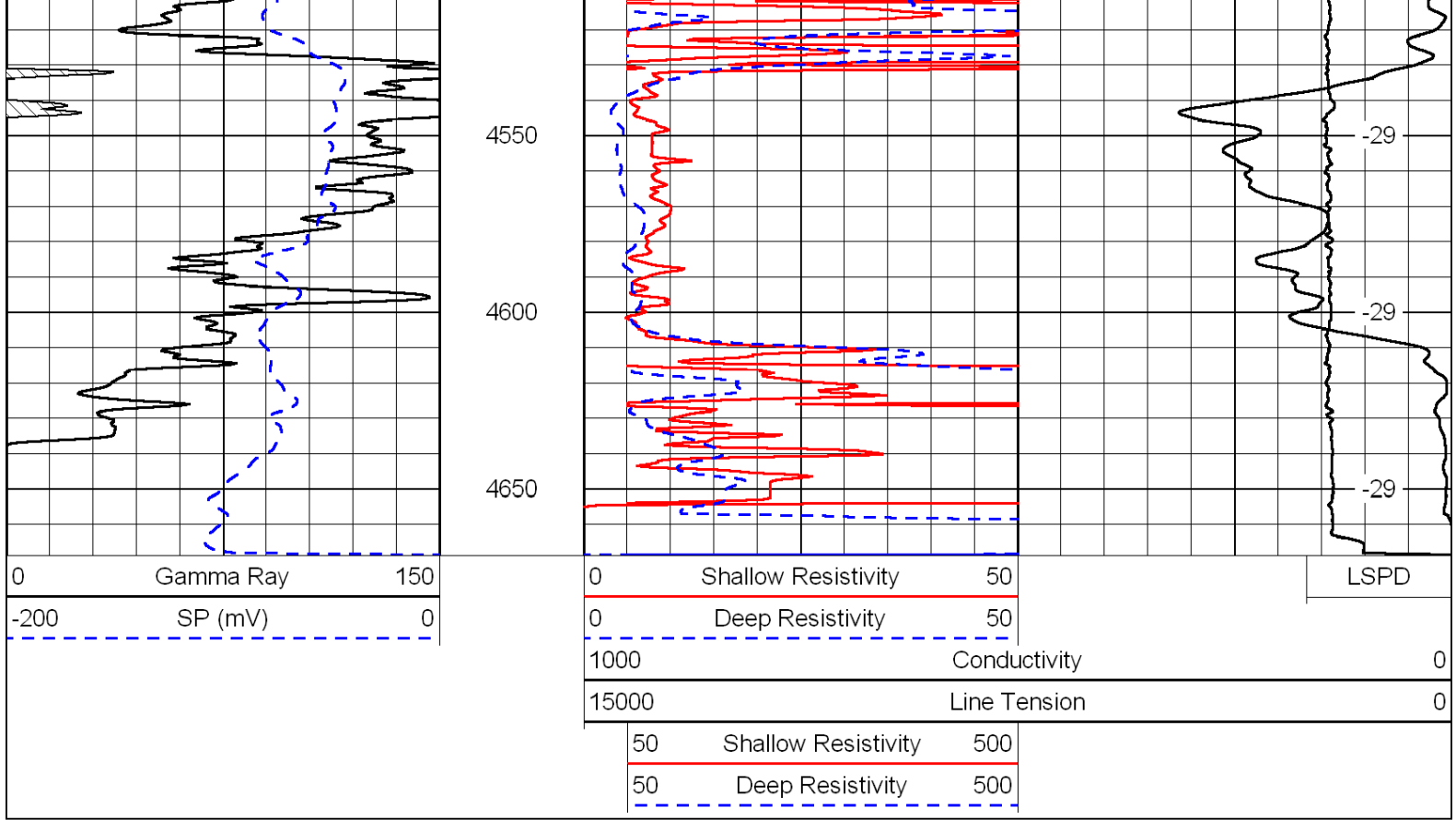




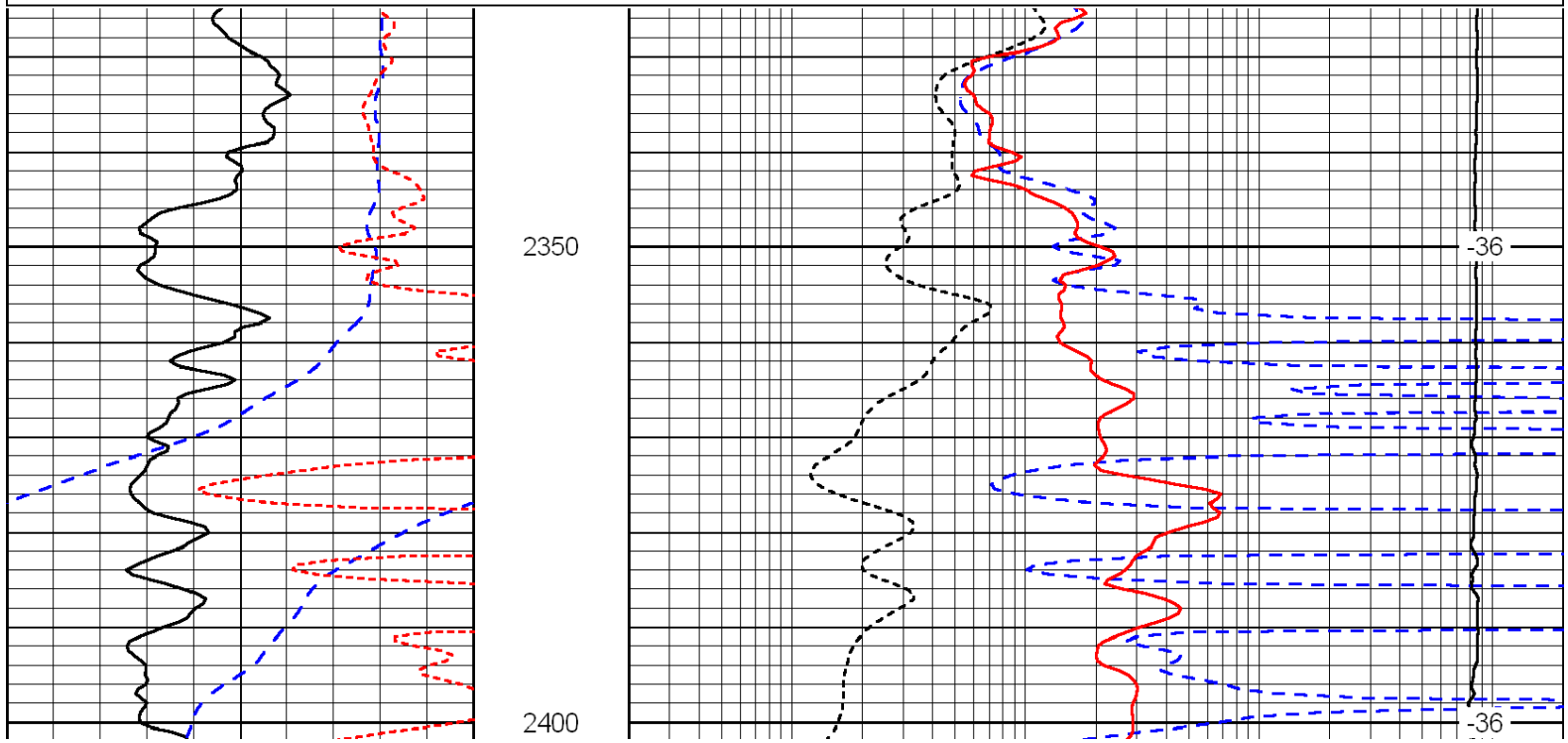
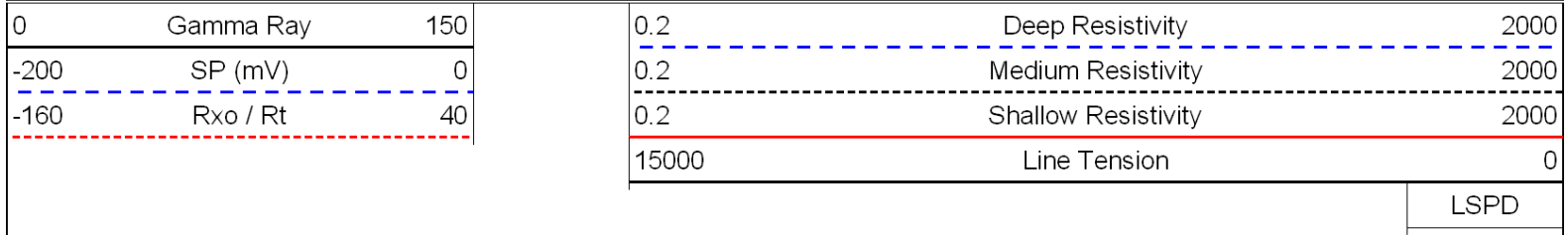


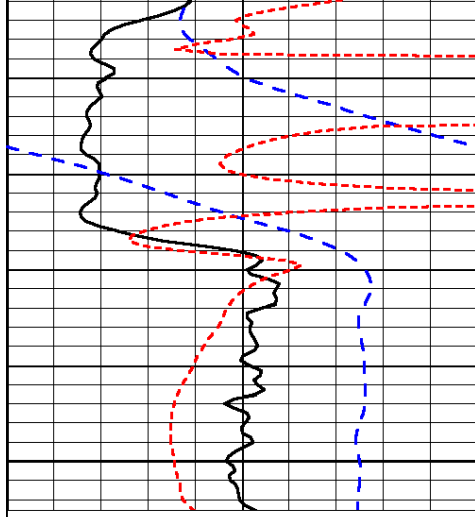






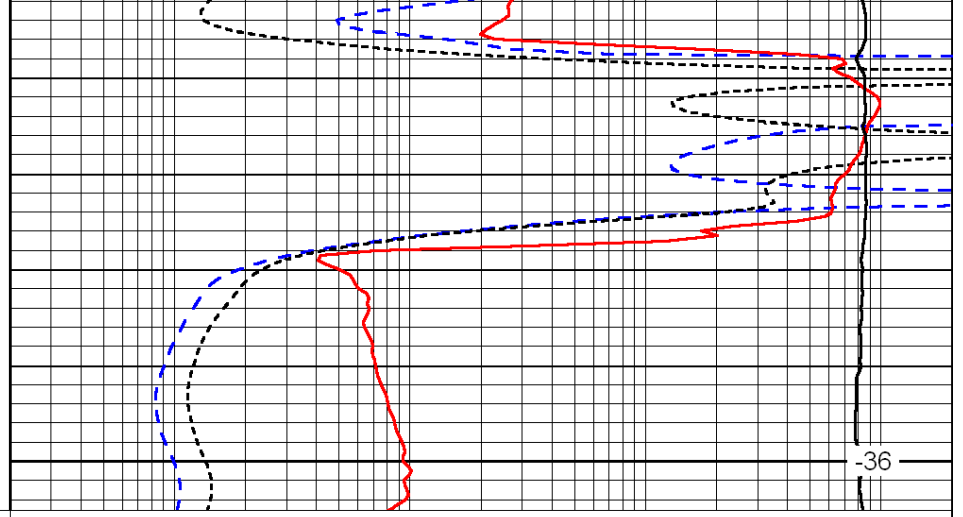
Database File: c:\warrior\data\carmen schmitt_sharpe beckman no. 1\schmitthd.db
 Dataset Pathname: DIL/csstk
 Presentation Format: dil
 Dataset Creation: Mon May 10 22:11:09 2010
 Charted by: Depth in Feet scaled 1:240





0	Gamma Ray	150
-200	SP (mV)	0
-160	Rxo / Rt	40

2450



0.2	Deep Resistivity	2000
0.2	Medium Resistivity	2000
0.2	Shallow Resistivity	2000
15000	Line Tension	0

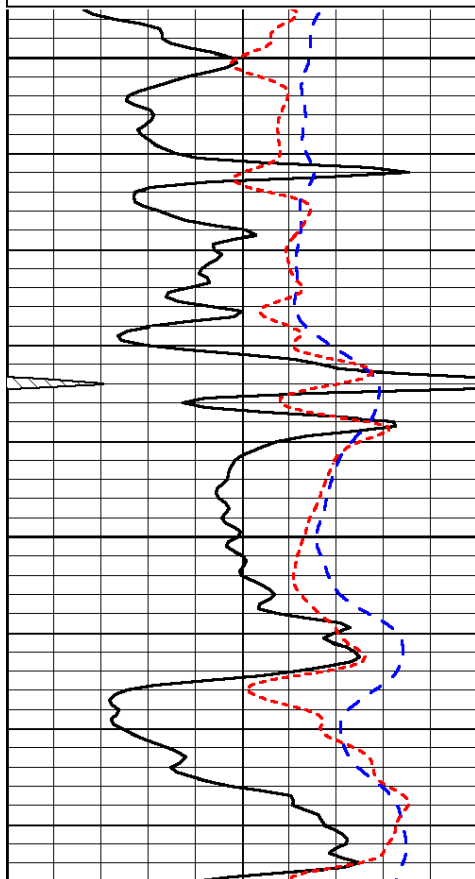
LSPD

Database File: c:\warrior\data\carmen schmitt_sharpe beckman no. 1\schmitthd.db
 Dataset Pathname: DIL/csstk
 Presentation Format: dil
 Dataset Creation: Mon May 10 22:11:09 2010
 Charted by: Depth in Feet scaled 1:240

0	Gamma Ray	150
-200	SP (mV)	0
-160	Rxo / Rt	40

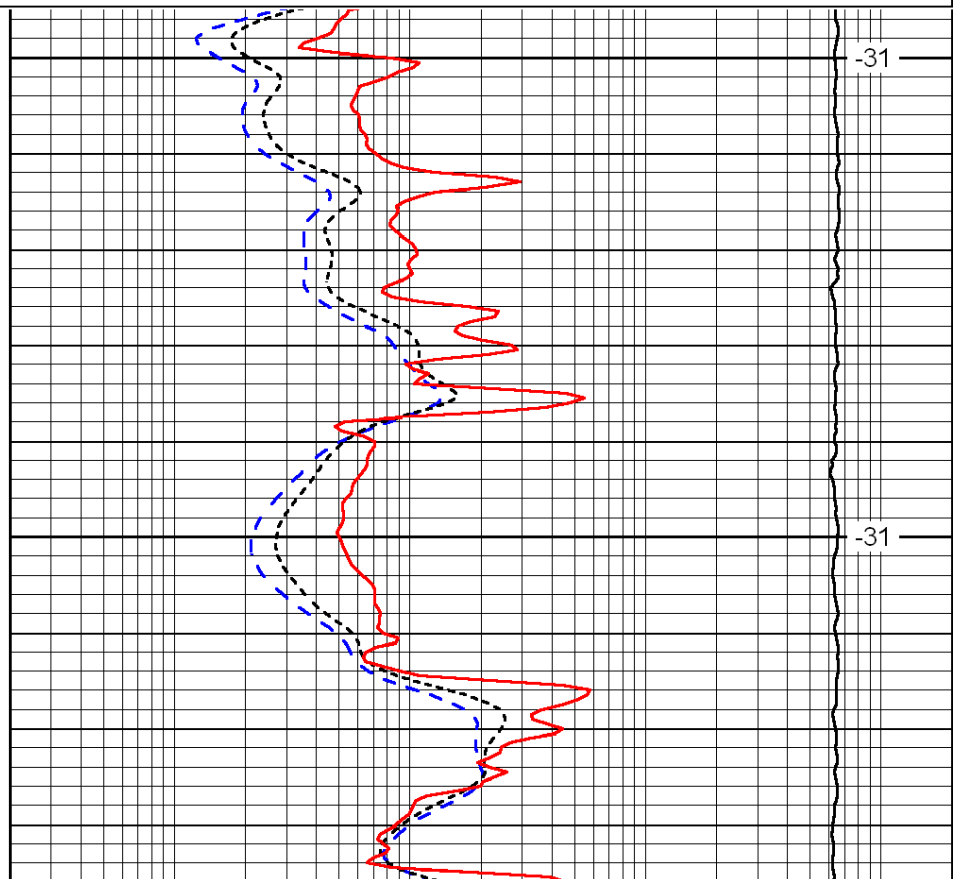
0.2	Deep Resistivity	2000
0.2	Medium Resistivity	2000
0.2	Shallow Resistivity	2000
15000	Line Tension	0

LSPD



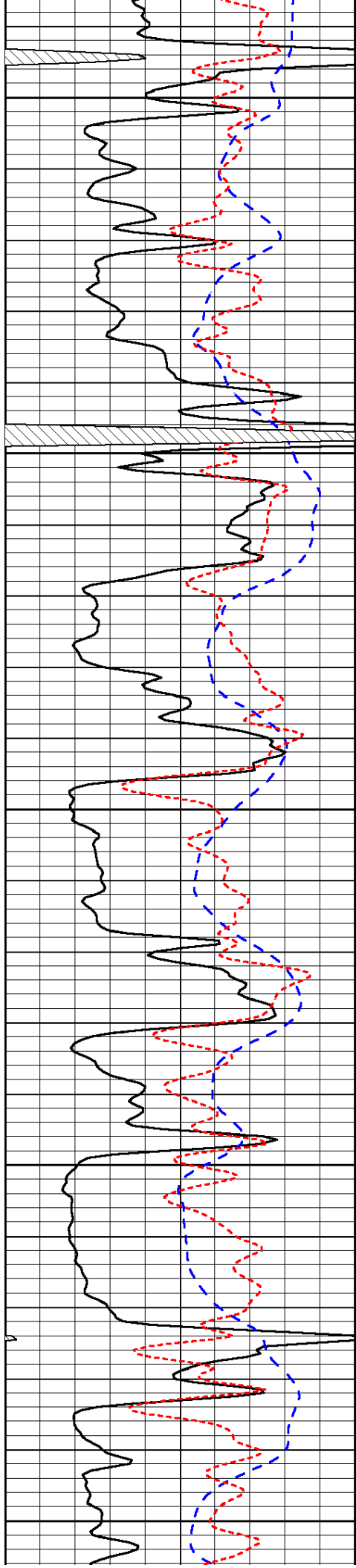
3700

3750



-31

-31



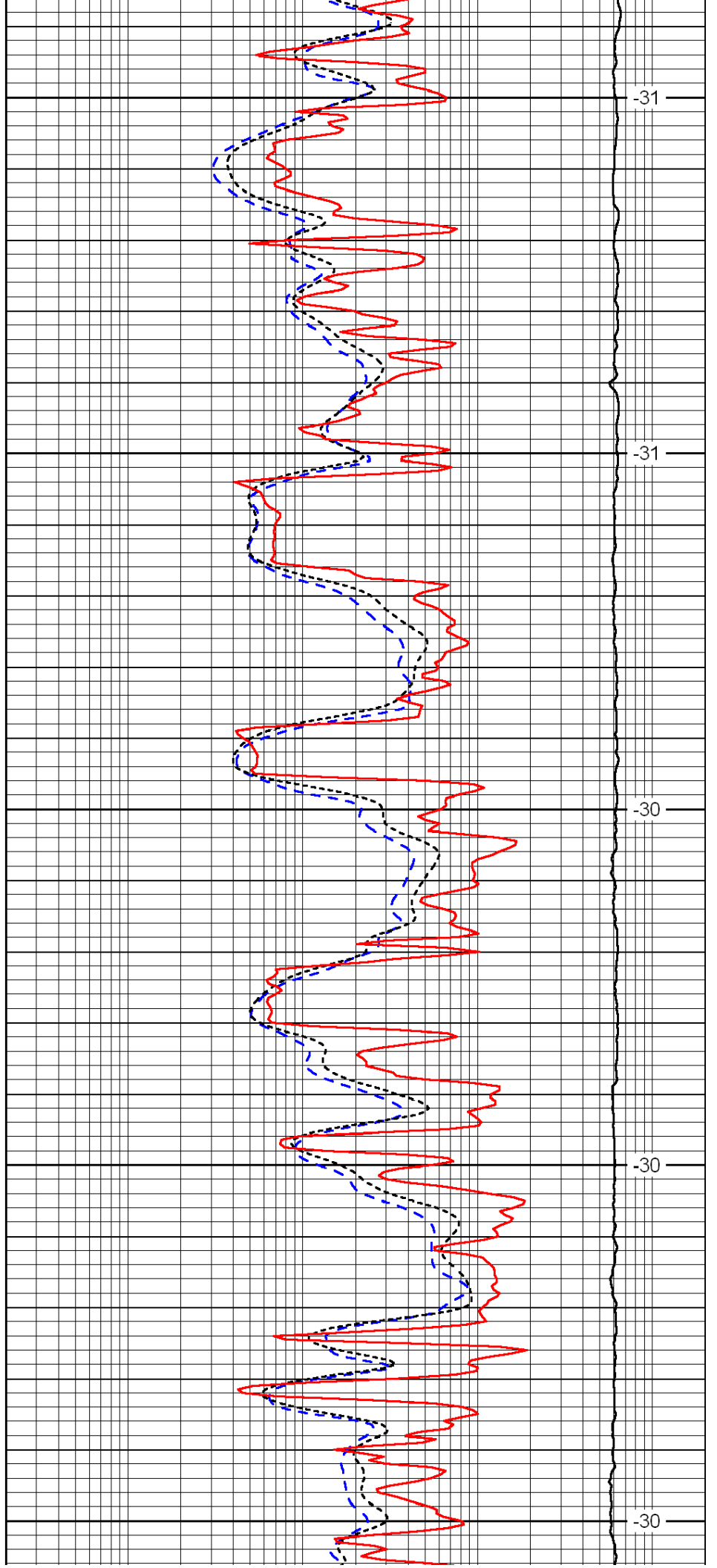
3800

3850

3900

3950

4000



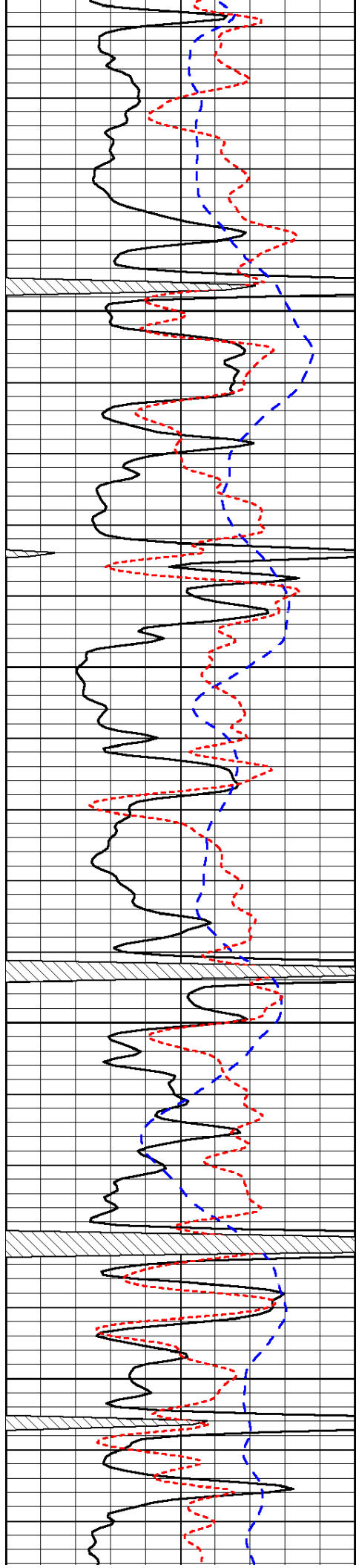
-31

-31

-30

-30

-30

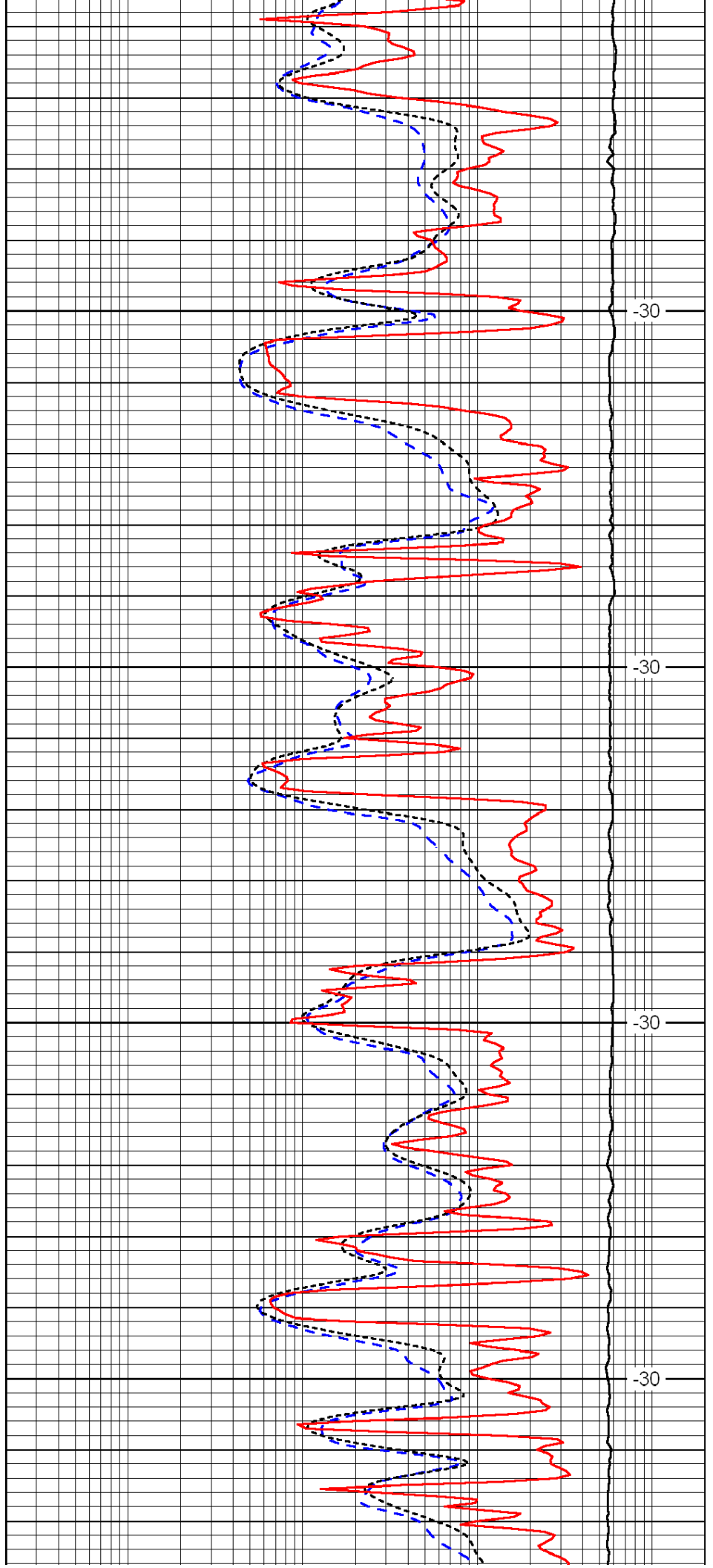


4050

4100

4150

4200

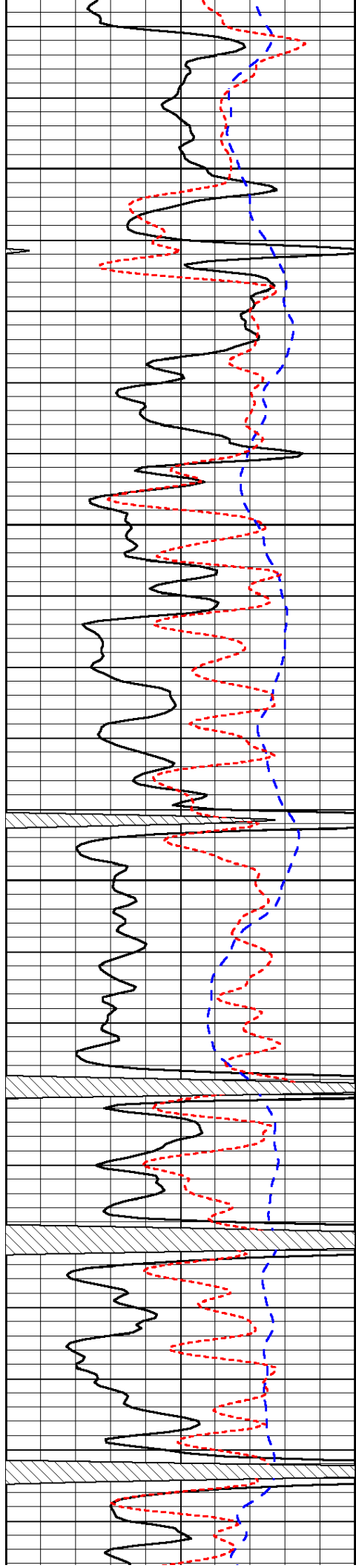


-30

-30

-30

-30

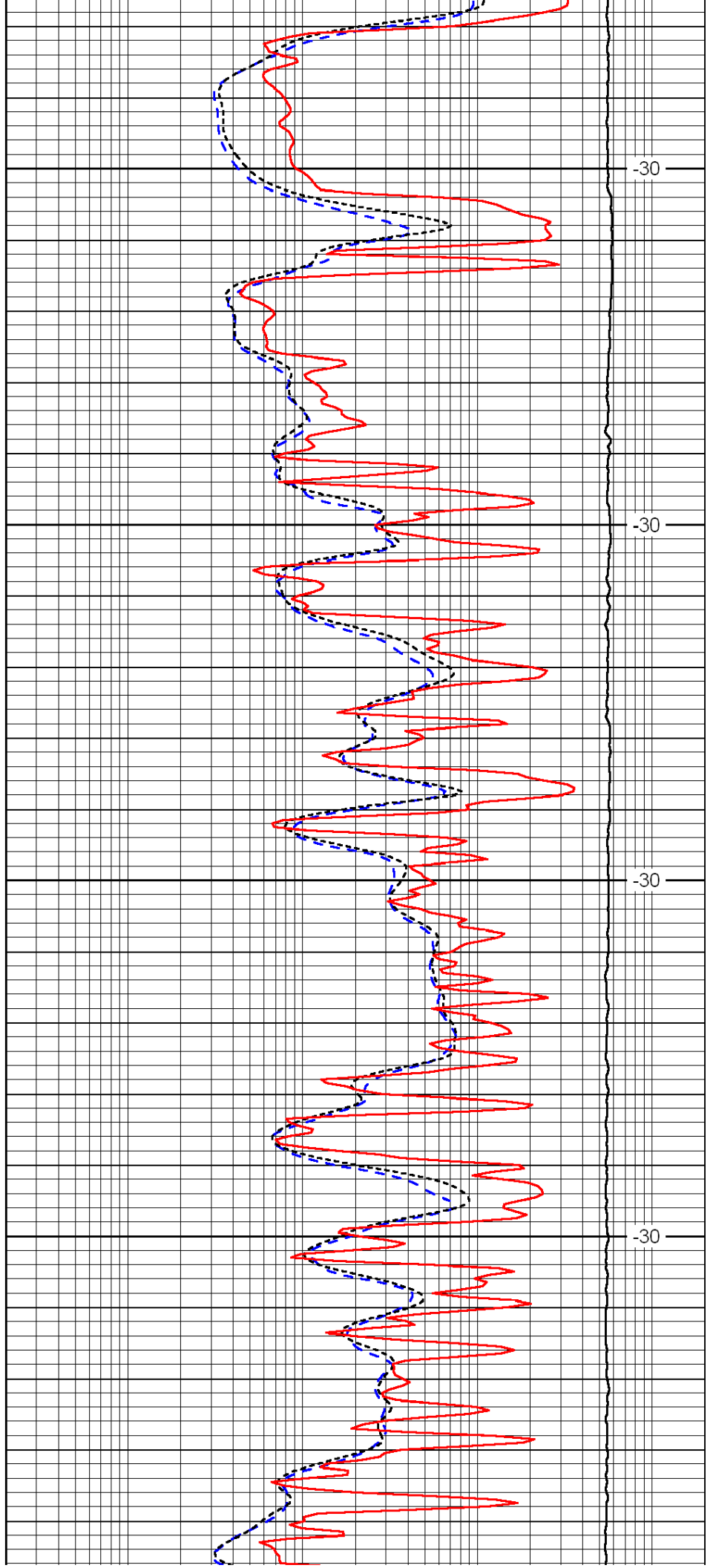


4250

4300

4350

4400

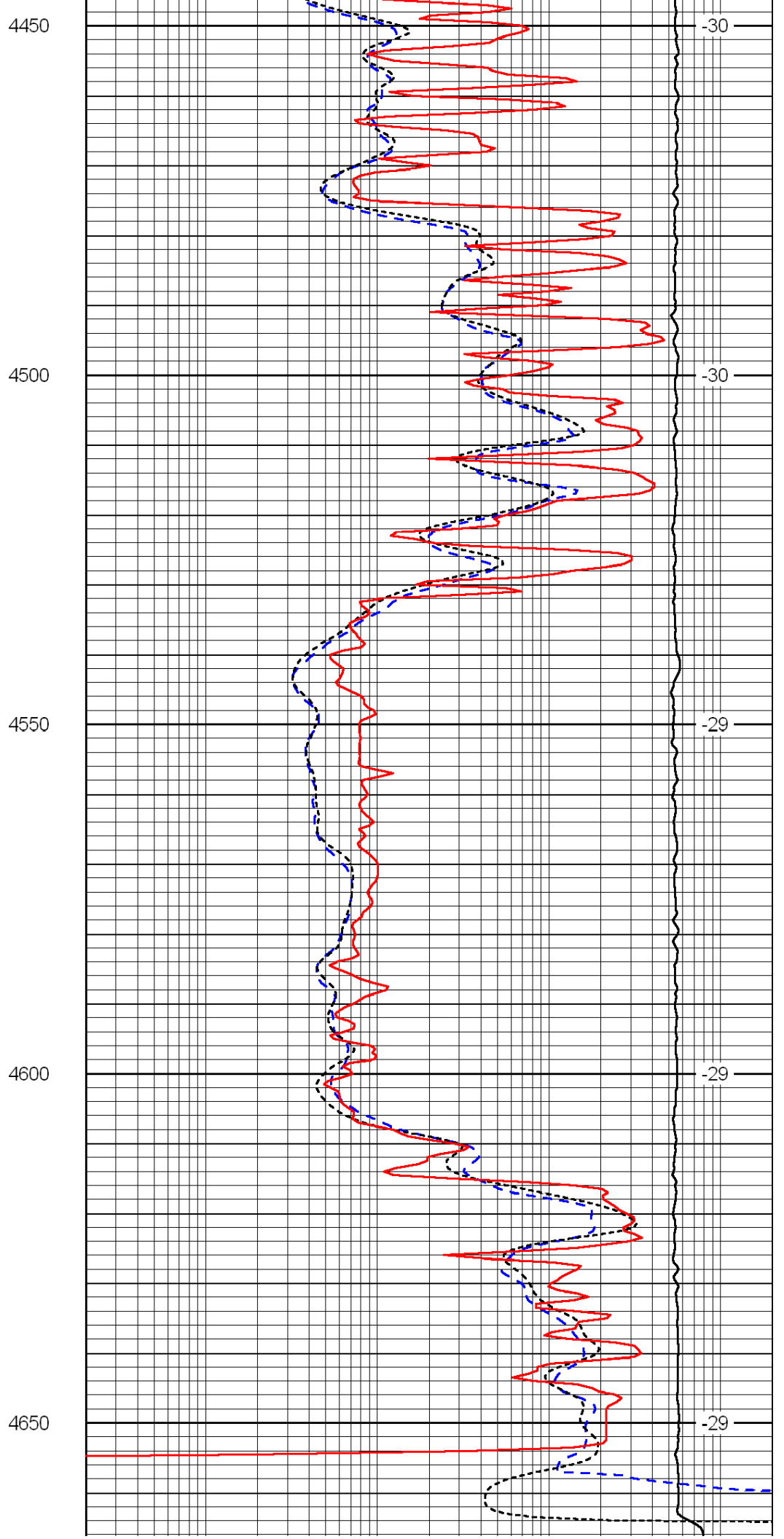
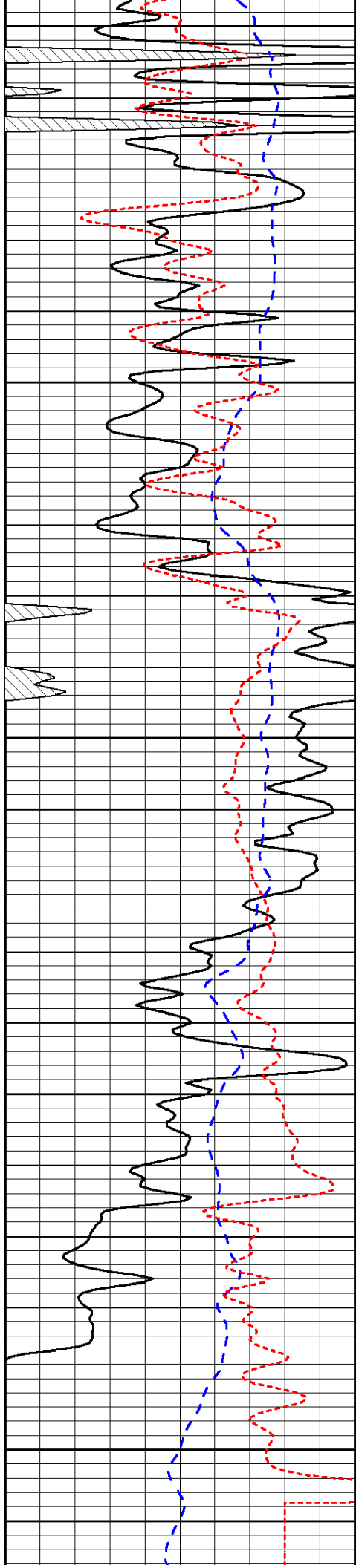


-30

-30

-30

-30



0	Gamma Ray	150
-200	SP (mV)	0
-160	Rxo / Rt	40

0.2	Deep Resistivity	2000
0.2	Medium Resistivity	2000
0.2	Shallow Resistivity	2000
15000	Line Tension	0
		LSPD