



**Borehole Compensated  
Sonic Log**

**DIGITAL LOG (785) 625-3858**

API No. 15-145-21,584-00-00	Company <b>Murfin Drilling Co Inc.</b>	Location <b>2050' FNL + 2310' FEL</b>	Other Services CNL/CDL MEL/DIL
Well <b>Fox No. 1-29</b>	County <b>Pawnee</b>		
Field <b>Wildcat</b>	State <b>Kansas</b>		
Log Measured From Kelly Bushing	Sec: <b>29</b>	Twp: <b>22S</b>	Rge: <b>15W</b>
Drilling Measured From Kelly Bushing			Elevation K.B. 2008 D.F. G.L. 2003

Run Number	4/11/2009						
Type Log	BHC Sonic						
Depth Driller	4055						
Depth Logger	4056						
Bottom Logged Interval	4044						
Top Logged Interval	600						
Type Fluid In Hole	Chemical						
Salinity, PPM CL	9,400						
Density	9.1						
Level	Full						
Max. Rec. Temp. F	119						
Operating Rig Time	5 Hours						
Equipment -- Location	10 Hays						
Recorded By	Jason Wellbrock						
Witnessed By	Terry Mcleod						

Run No	Bit	Borehole Record			Casing Record		
		From	To	Size	Wgt.	From	To
1	12.25	00	629	8.625	24#	00	629
2	7.875	629	4055				

<<< Fold Here >>>

All interpretations are opinions based on inferences from electrical or other measurements and we cannot and do not guarantee the accuracy or correctness of any interpretation, and we shall not, except in the case of gross or willful negligence on our part, be liable or responsible for any loss, costs, damages, or expenses incurred or sustained by anyone resulting from any interpretation made by any of our officers, agents or employees. These interpretations are also subject to our general terms and conditions set out in our current Price Schedule.

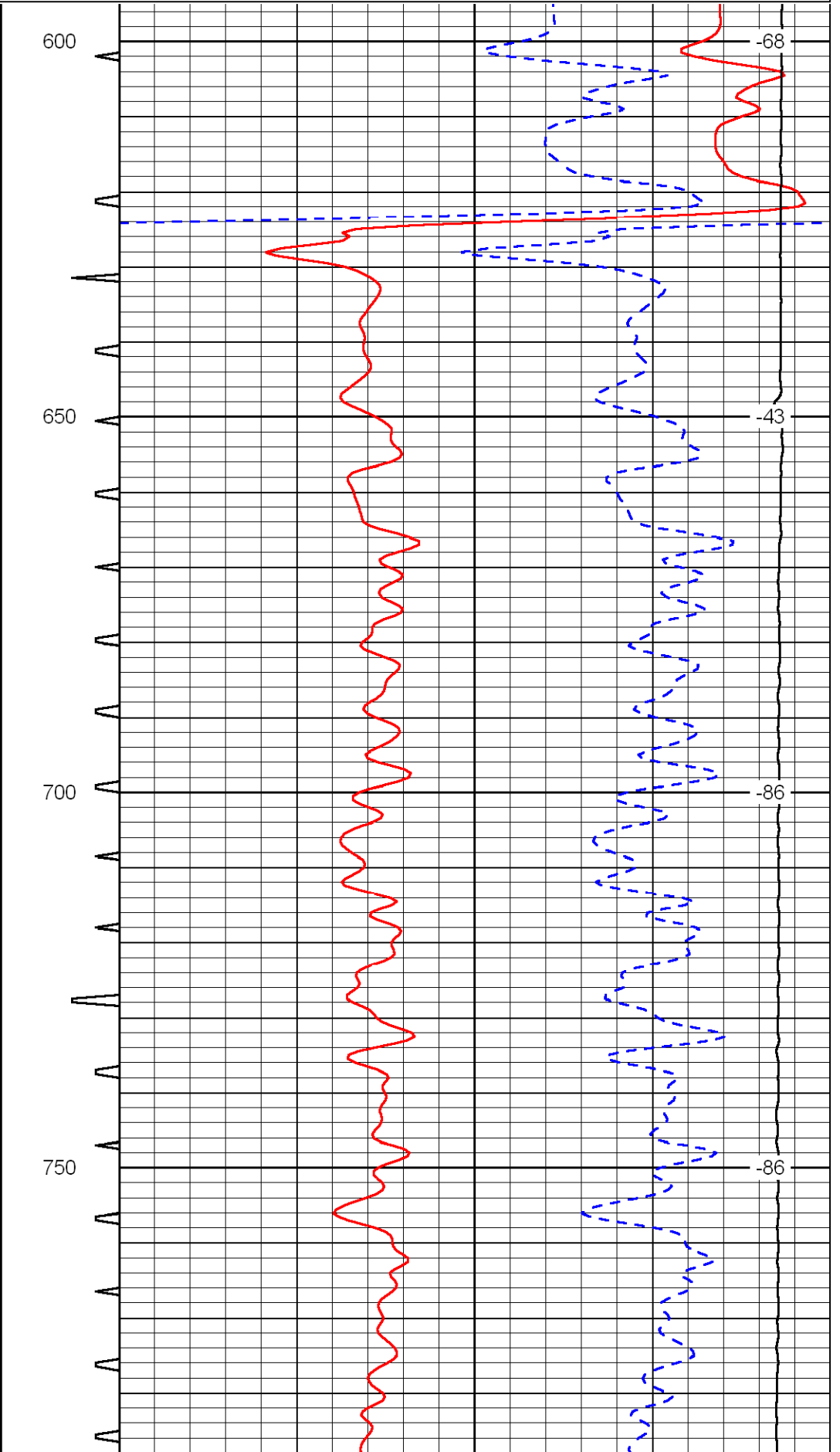
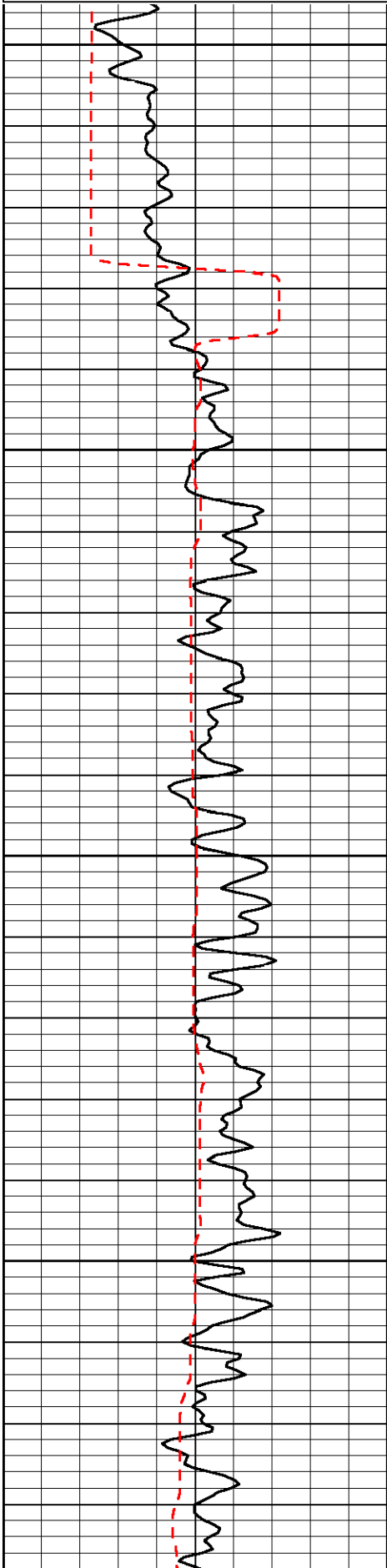
**Comments**

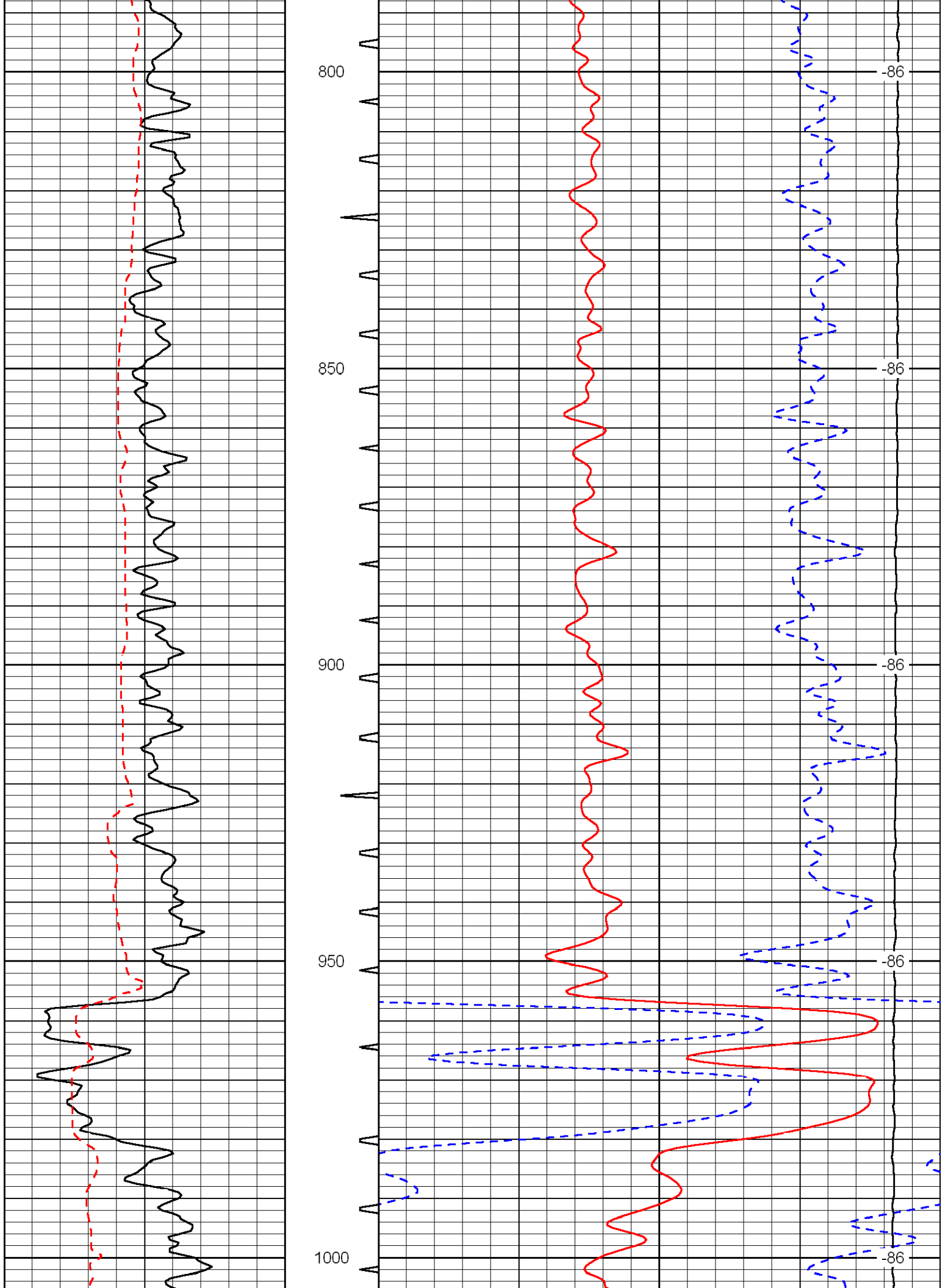
Thank you for using Log-Tech, Inc.  
(785) 625-3858

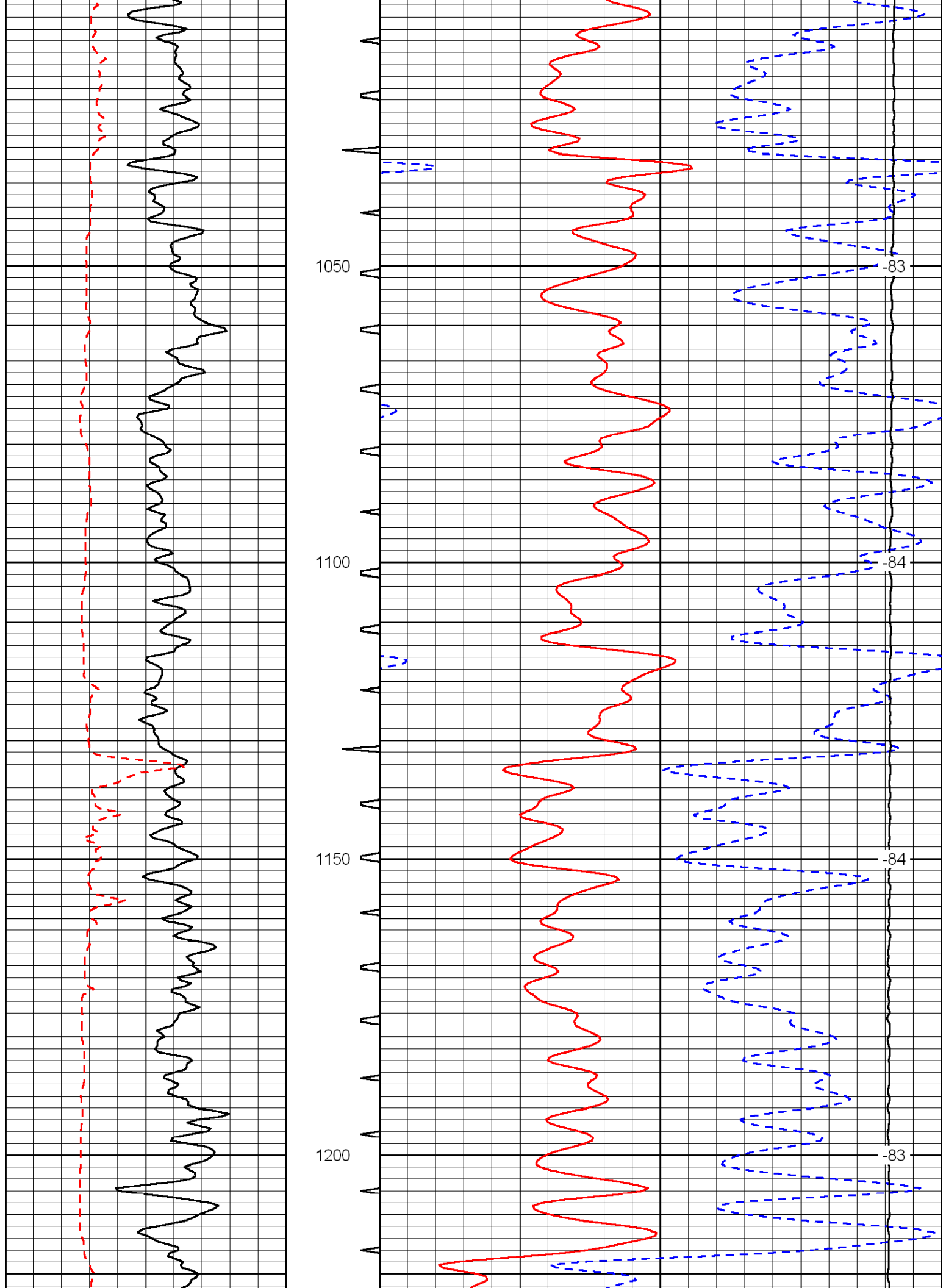
Larned Highway 19, 6 E to county rd 50, 3 1/2 S, W Into

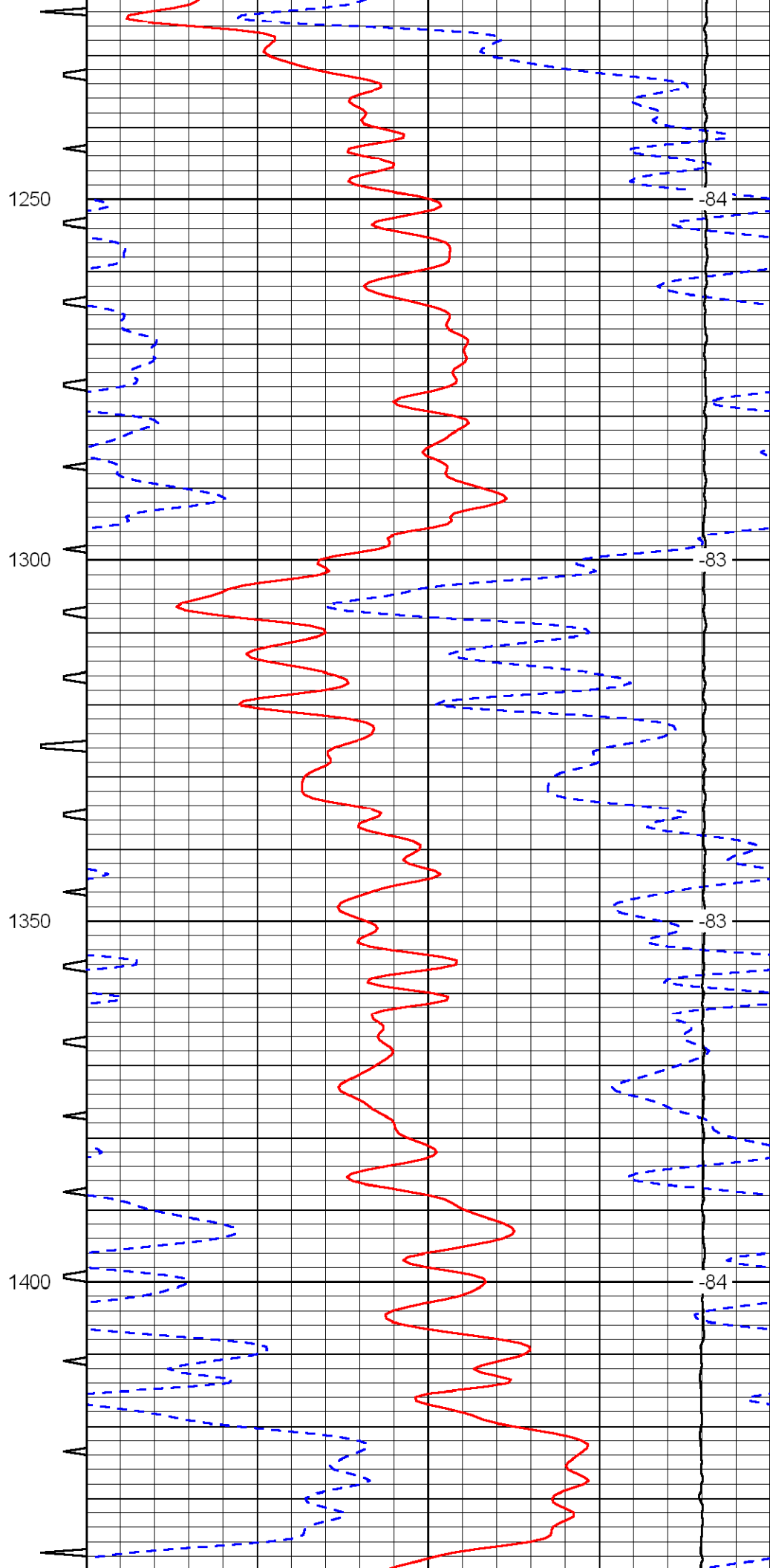
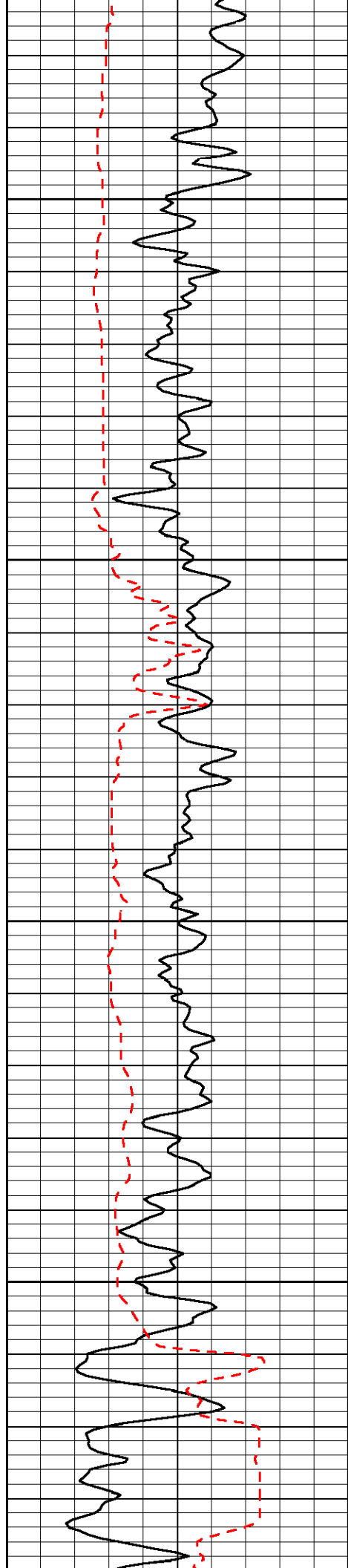
Database File: c:\warrior\data\murfin\_fox #1-29\murfinhd.db  
 Dataset Pathname: dil\murf2in  
 Presentation Format: sonic  
 Dataset Creation: Sat Apr 11 14:26:33 2009  
 Charted by: Depth in Feet scaled 1:240

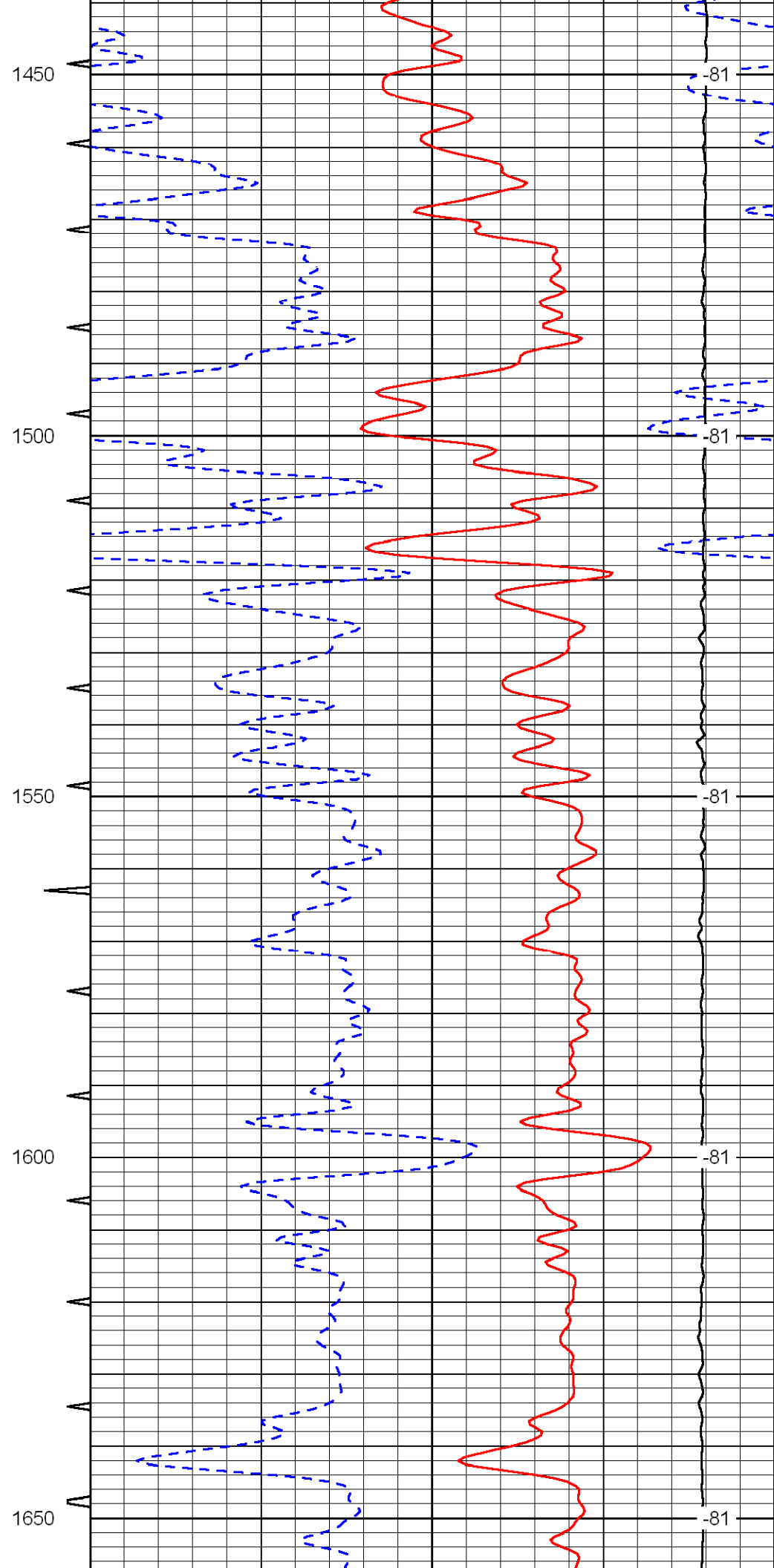
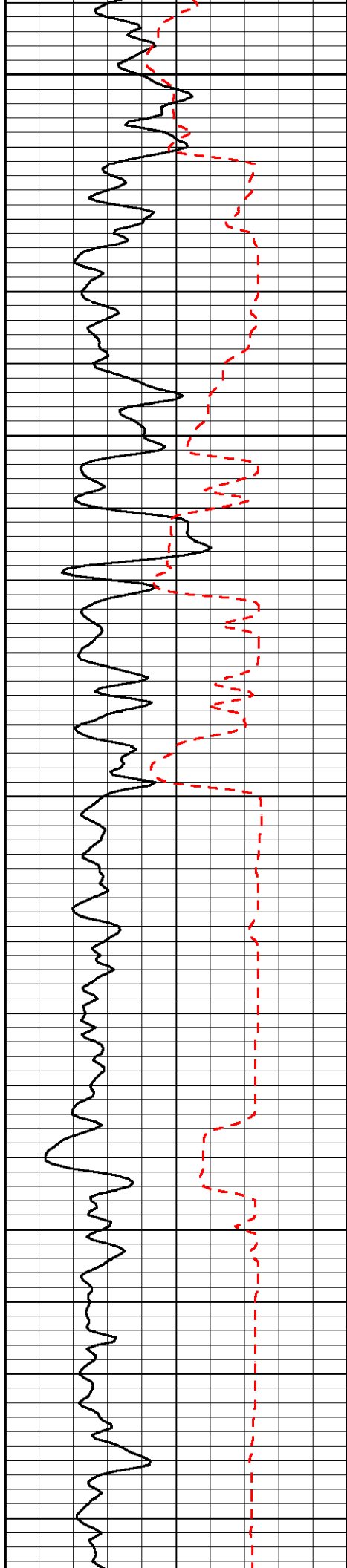
0	Gamma Ray	150	Sonic Int	140	Delta Time (usec/ft) (usec/ft)	40
150	Gamma Ray	300	5 (msec)	0	SPOR (pu)	-10
6	Caliper (in)	16		10000	LTEN (lb) (lb)	0
						LSPD (ft/min)

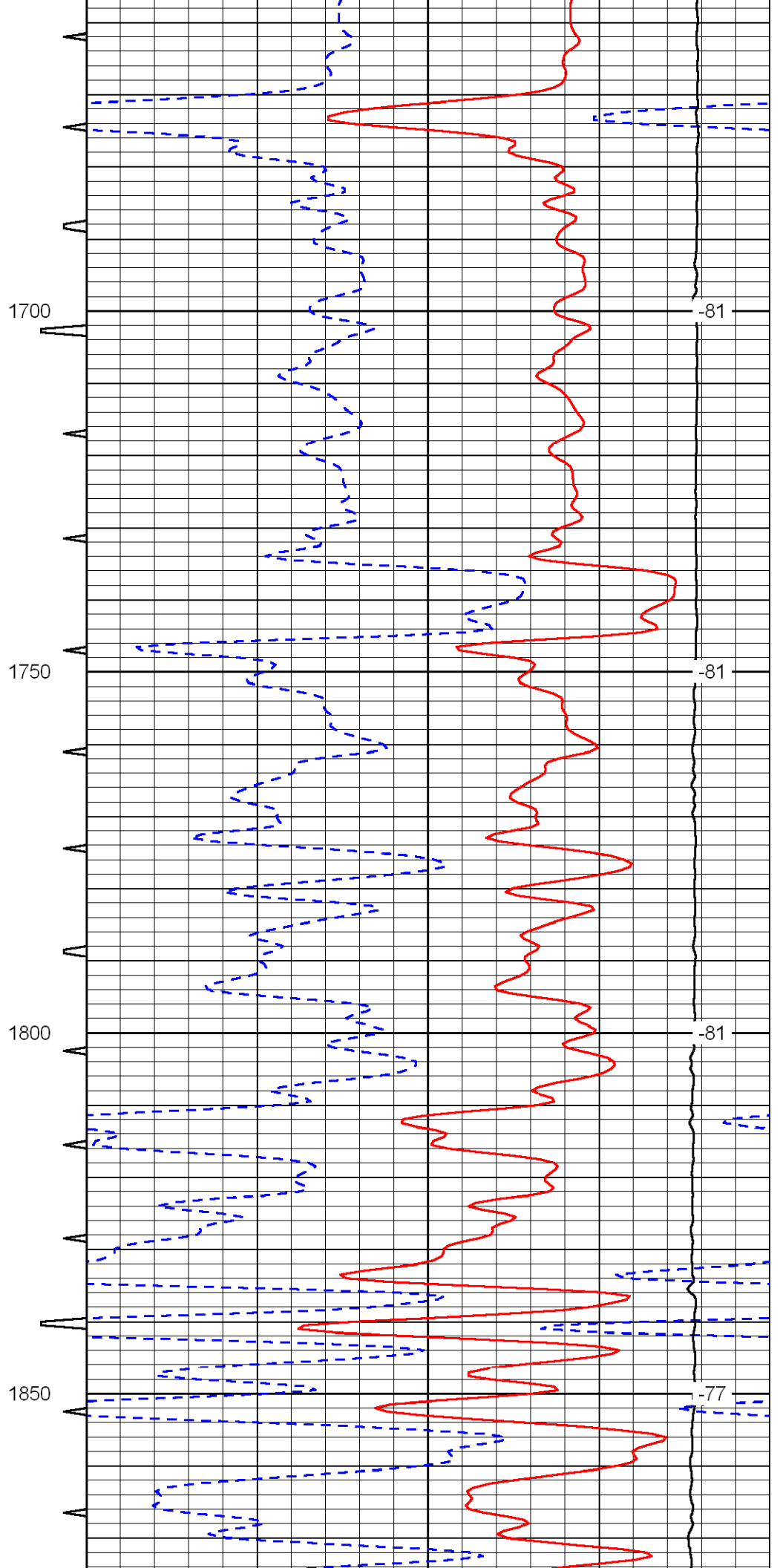
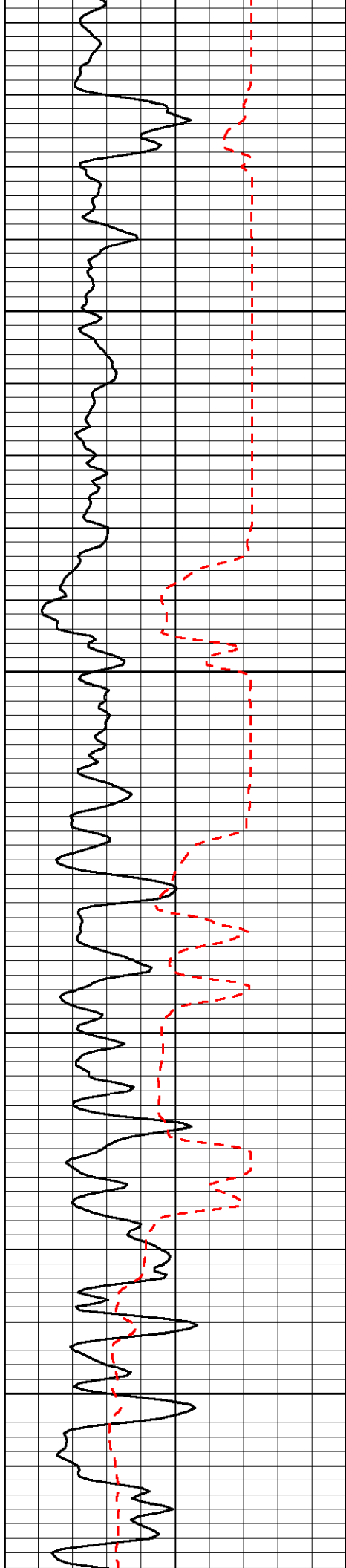


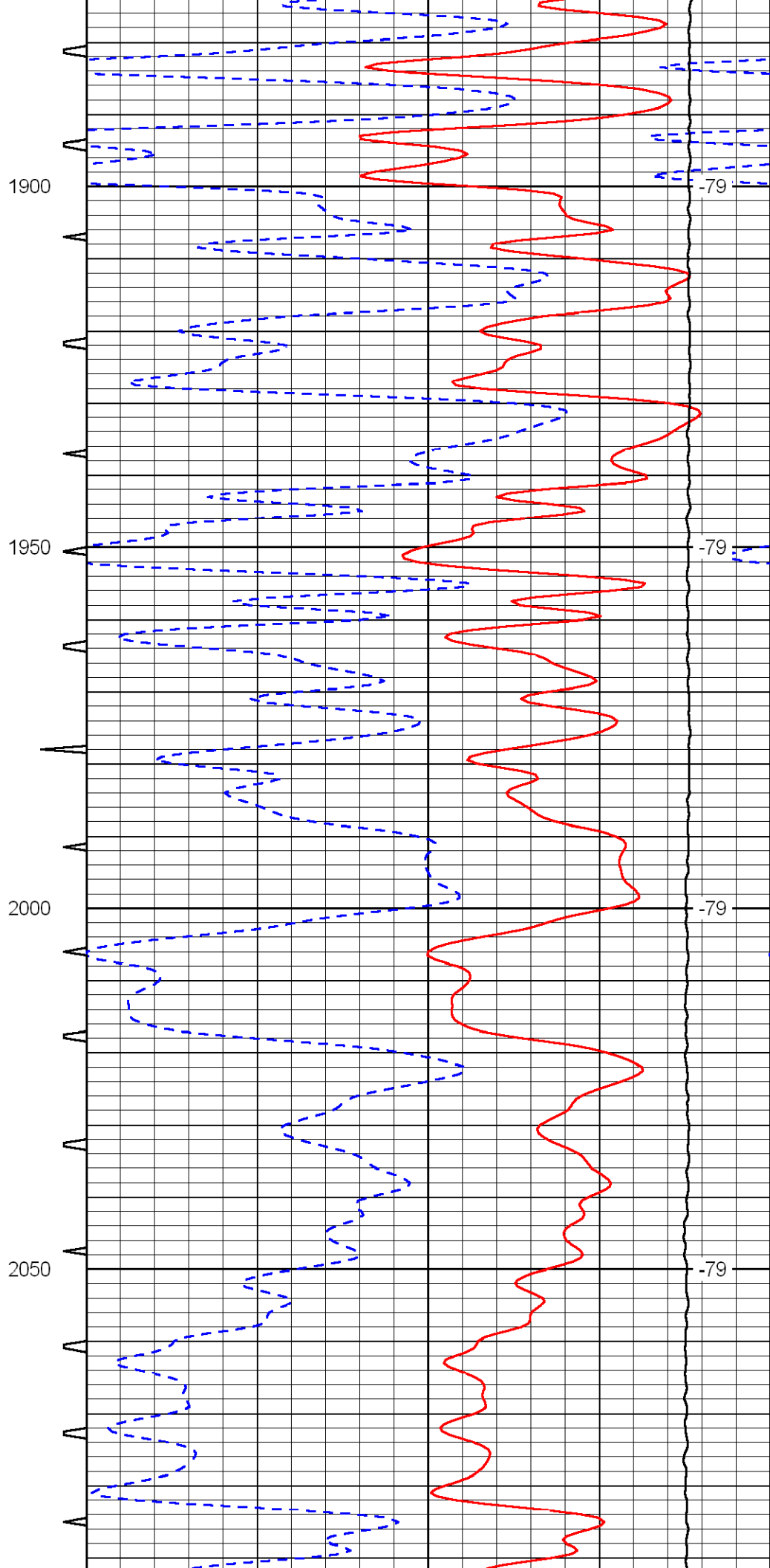
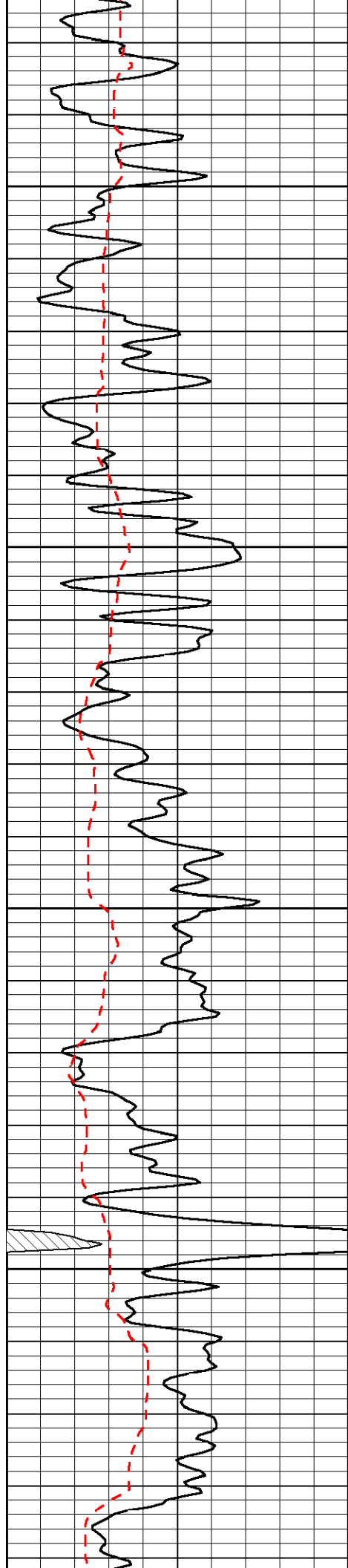


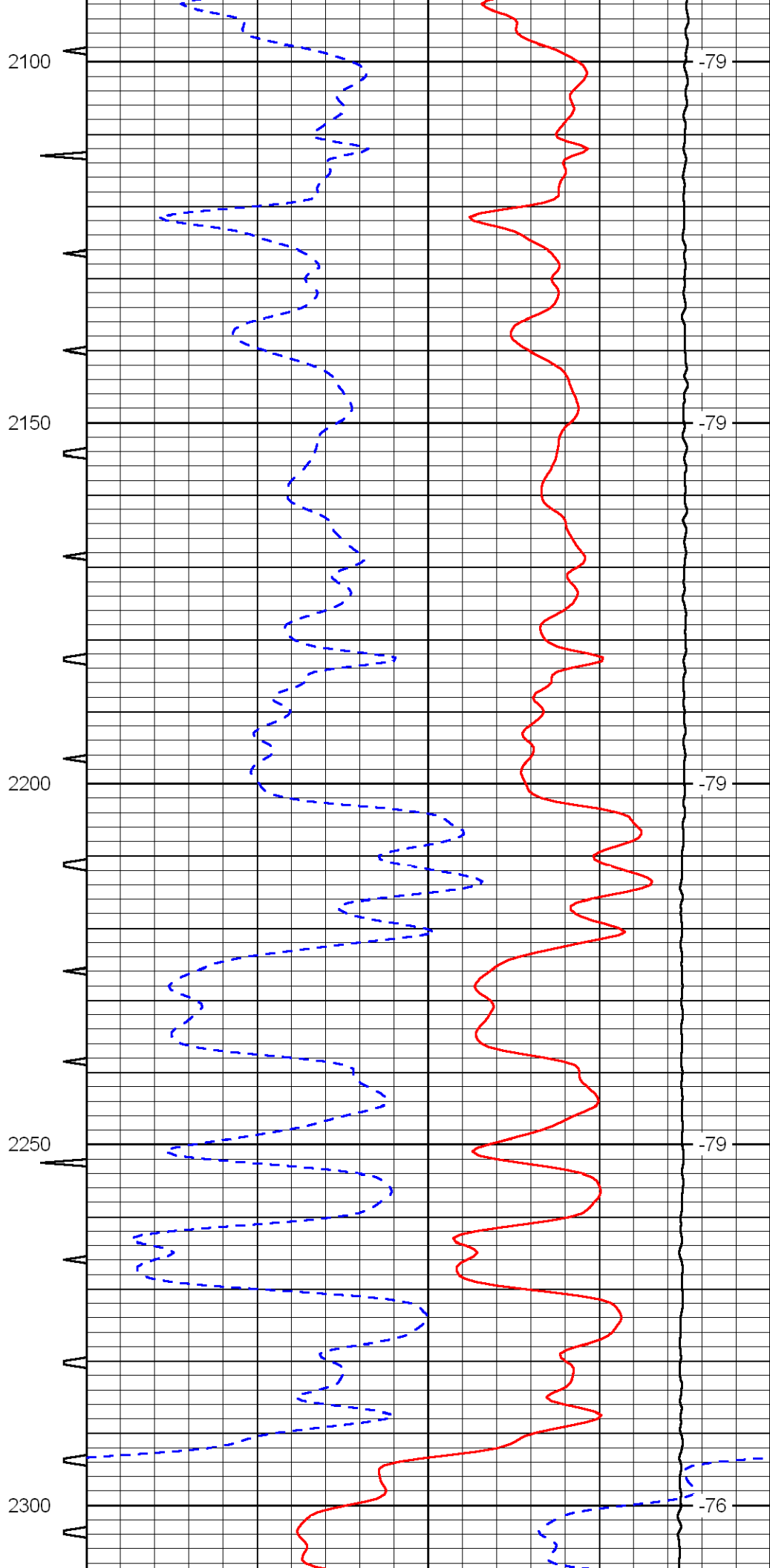
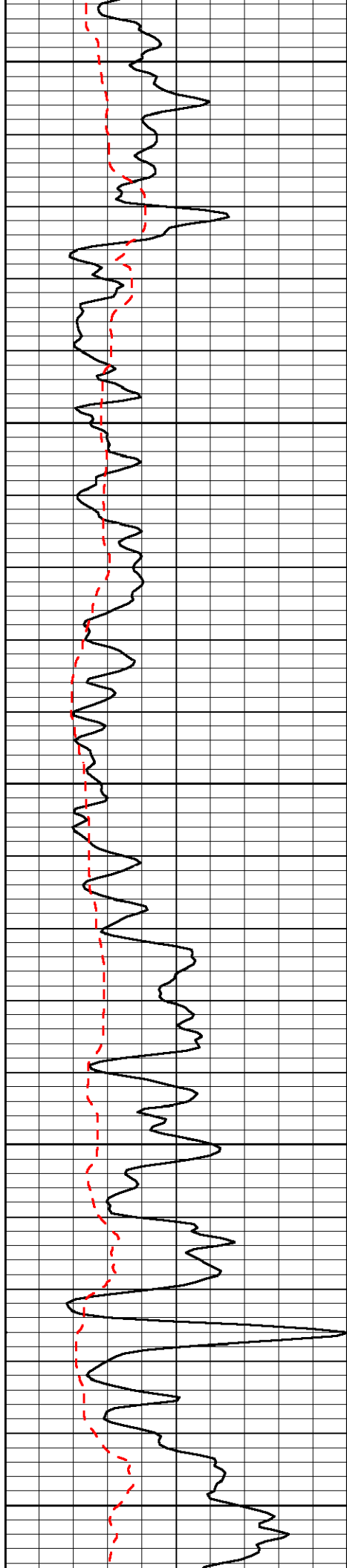


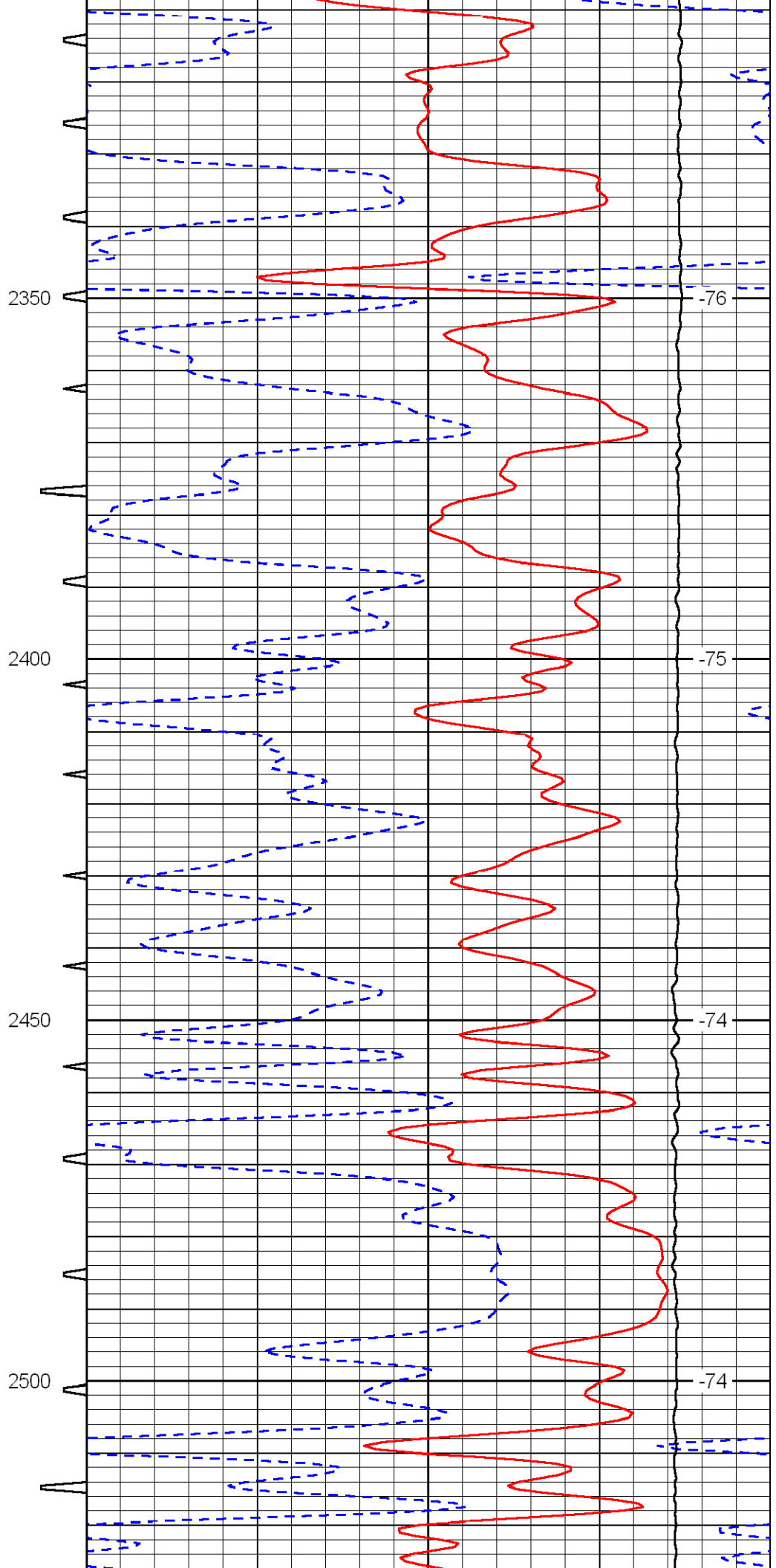
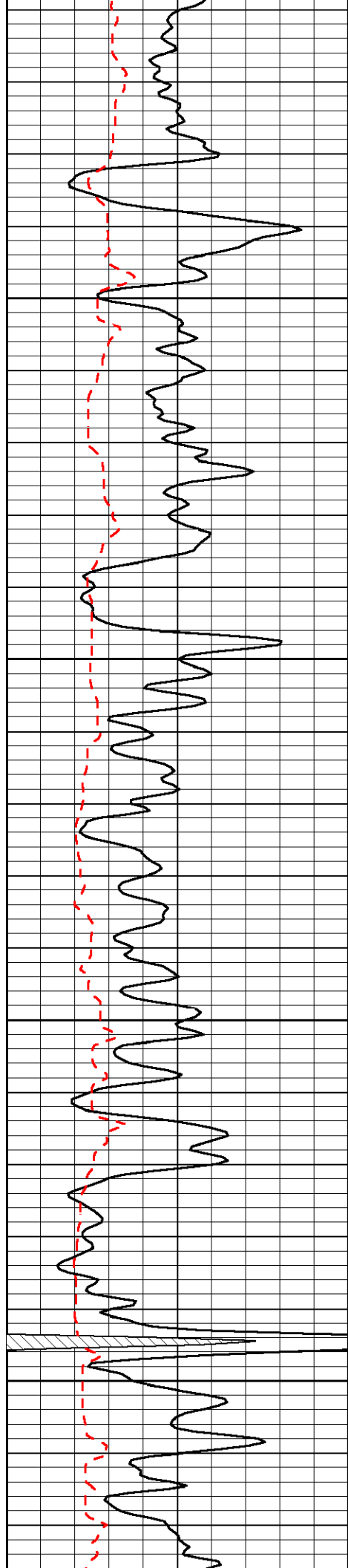


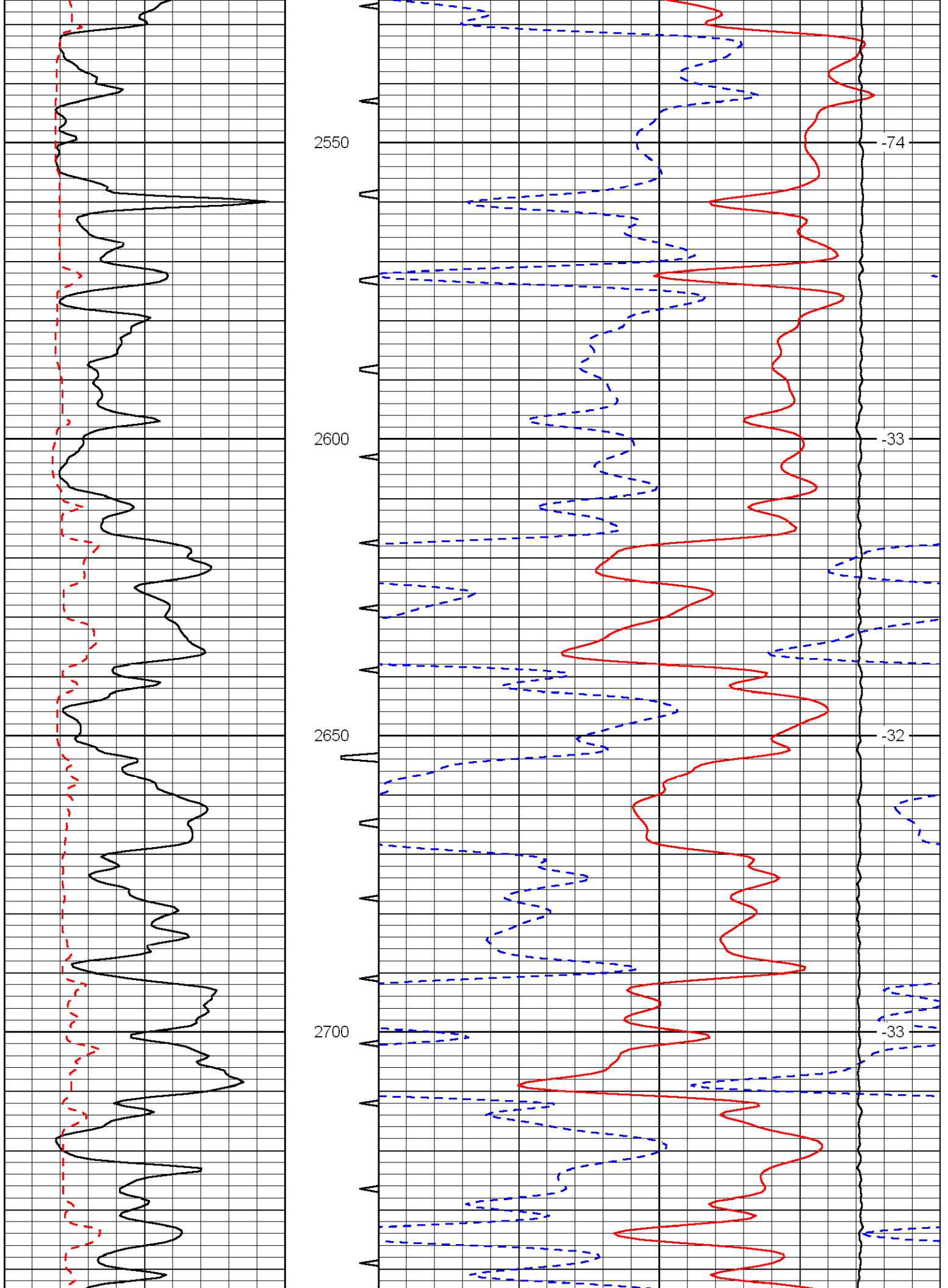


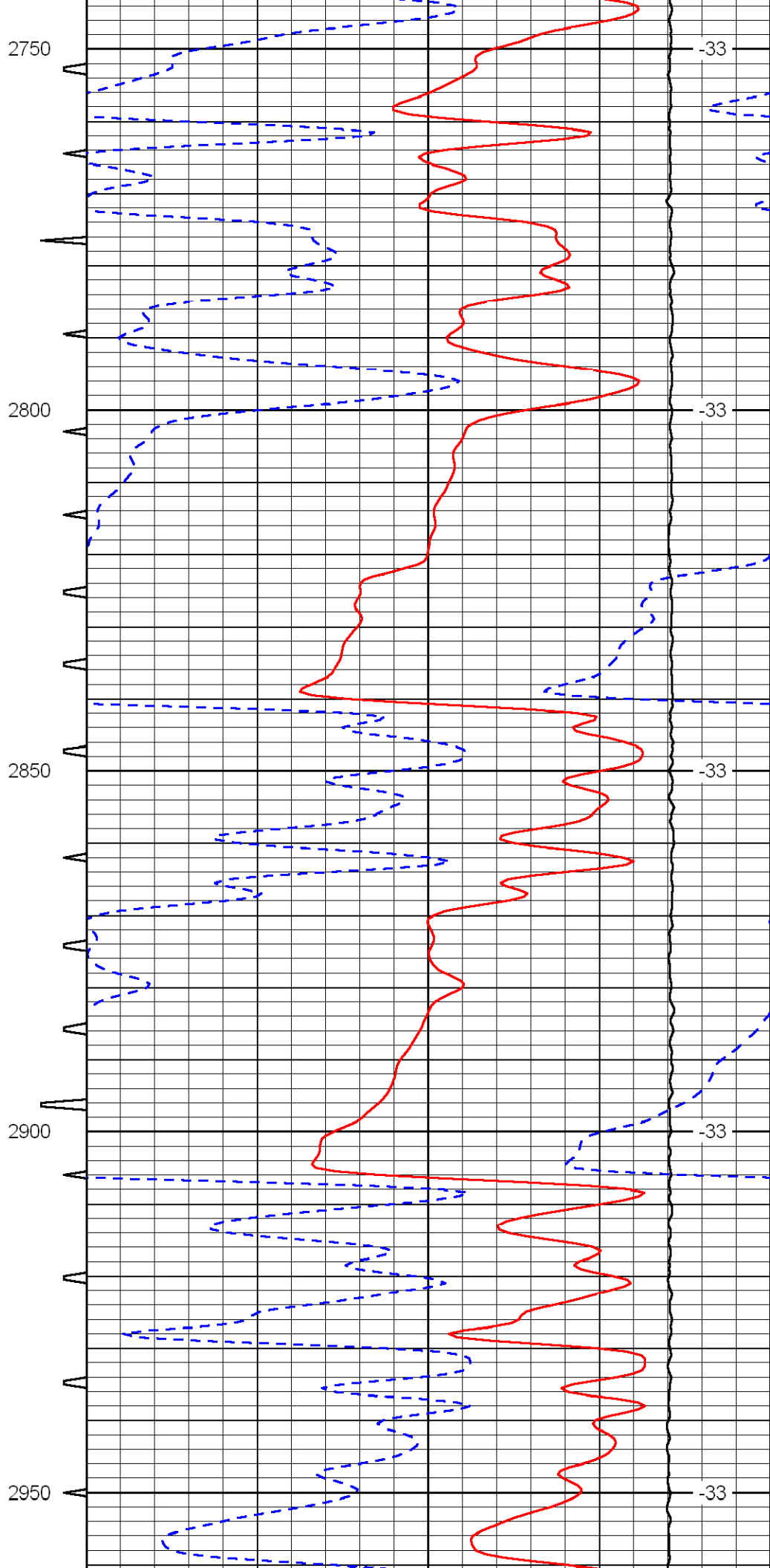
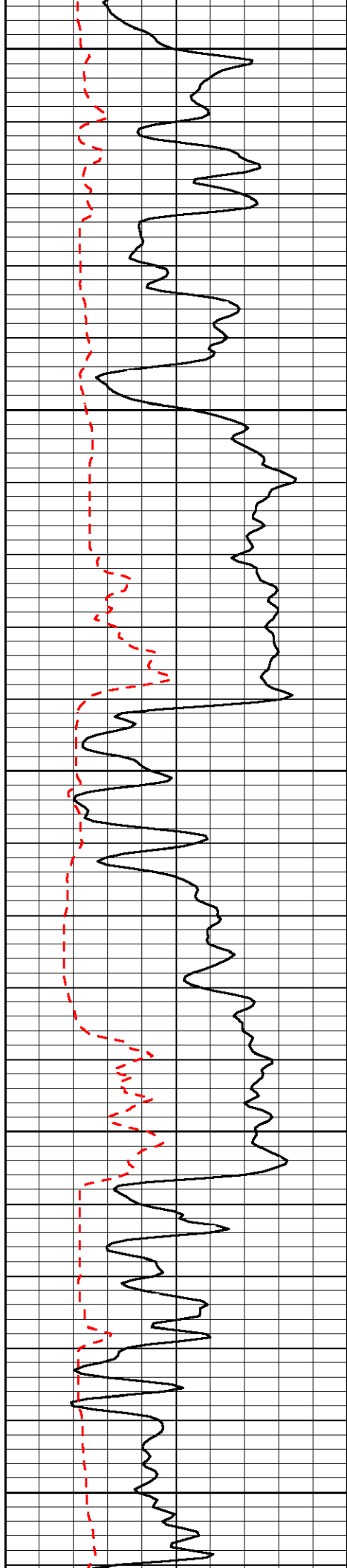


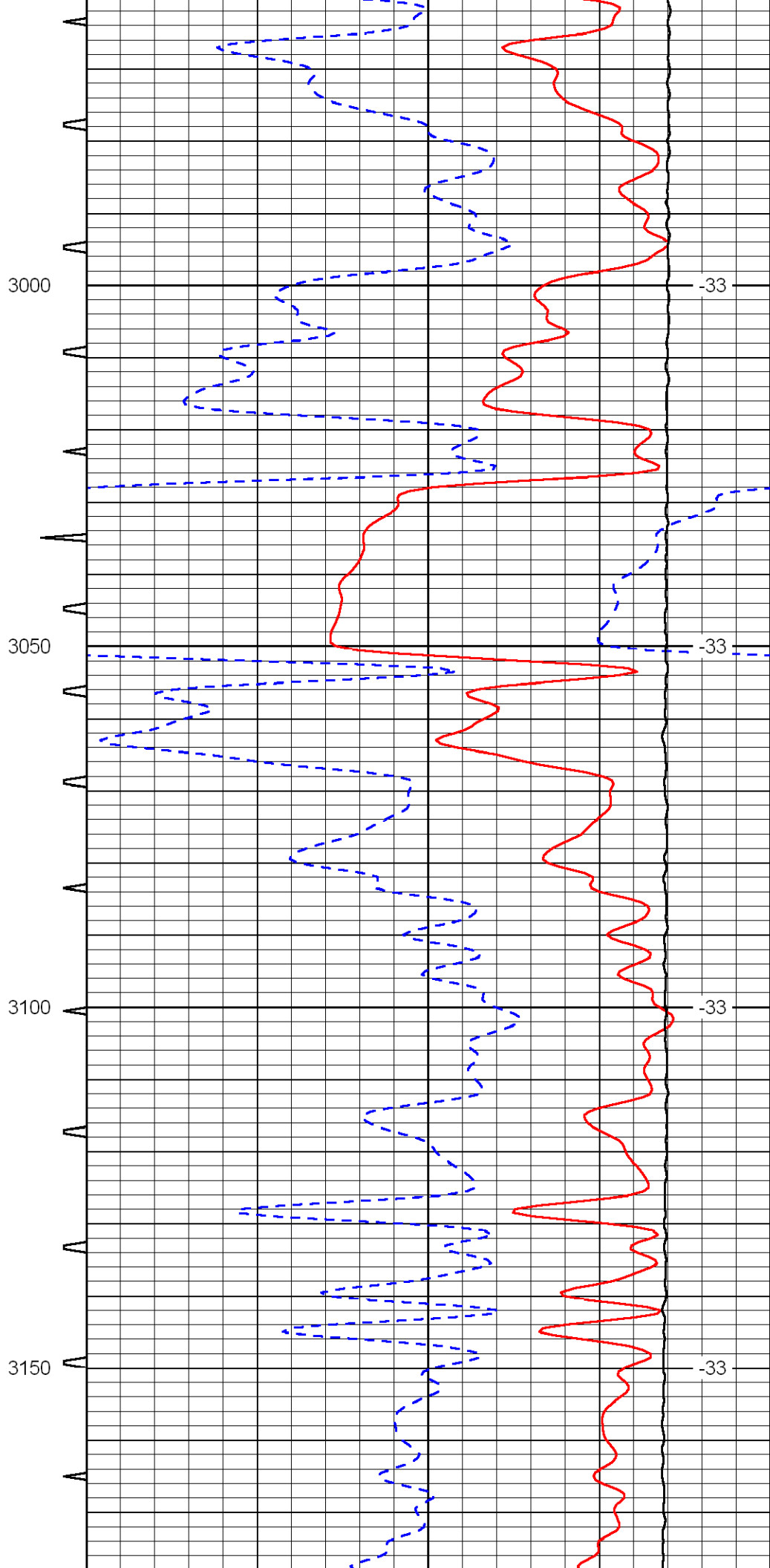
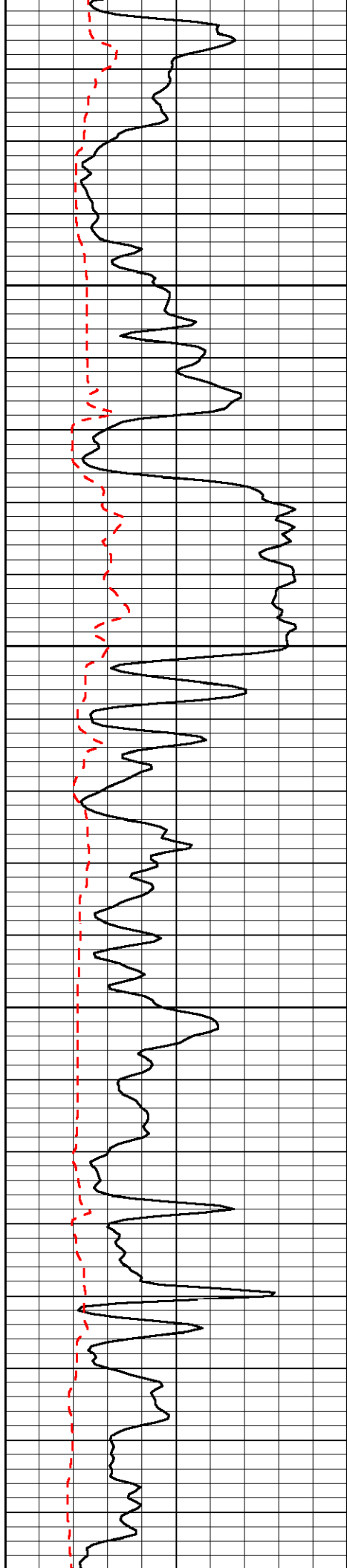


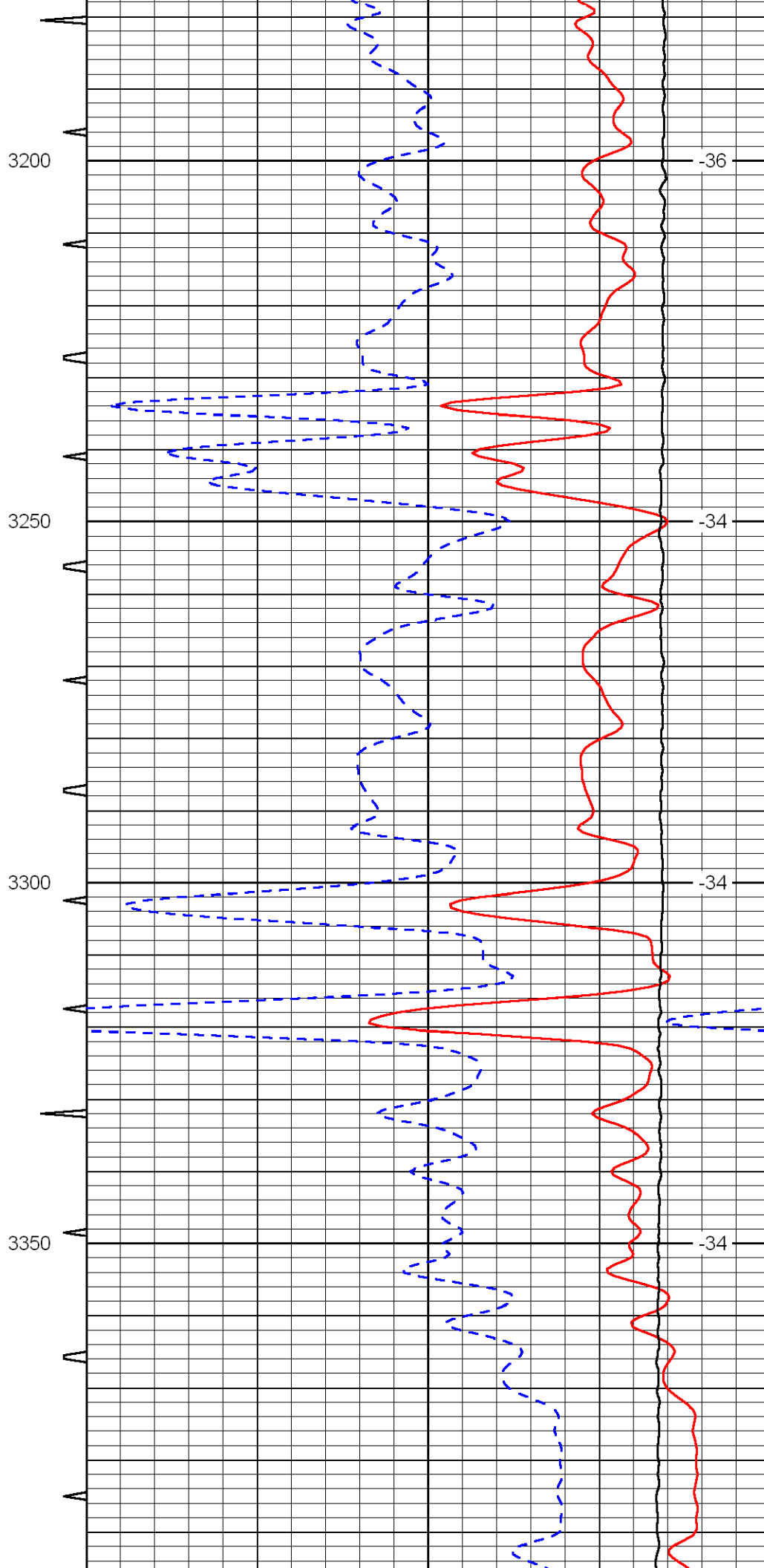
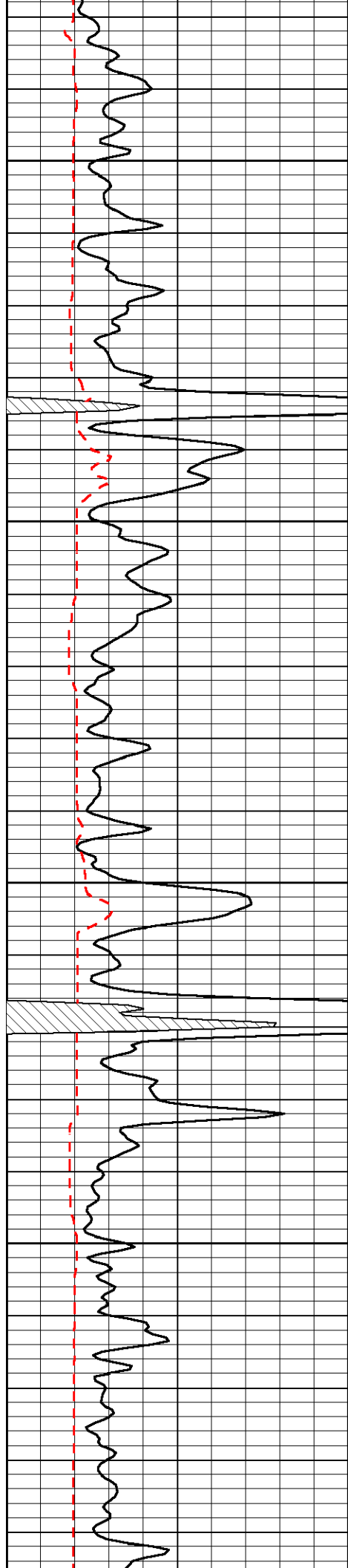


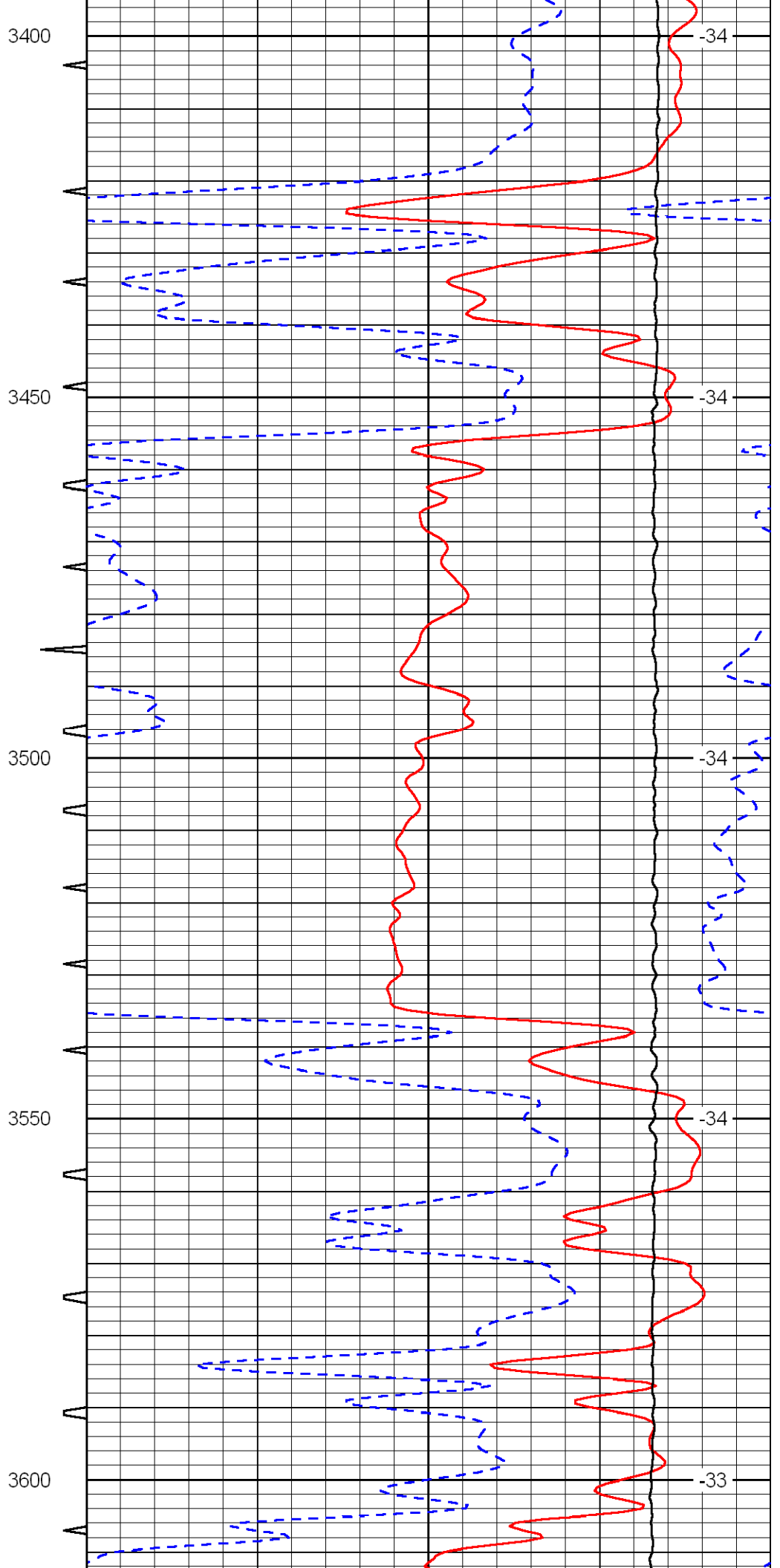
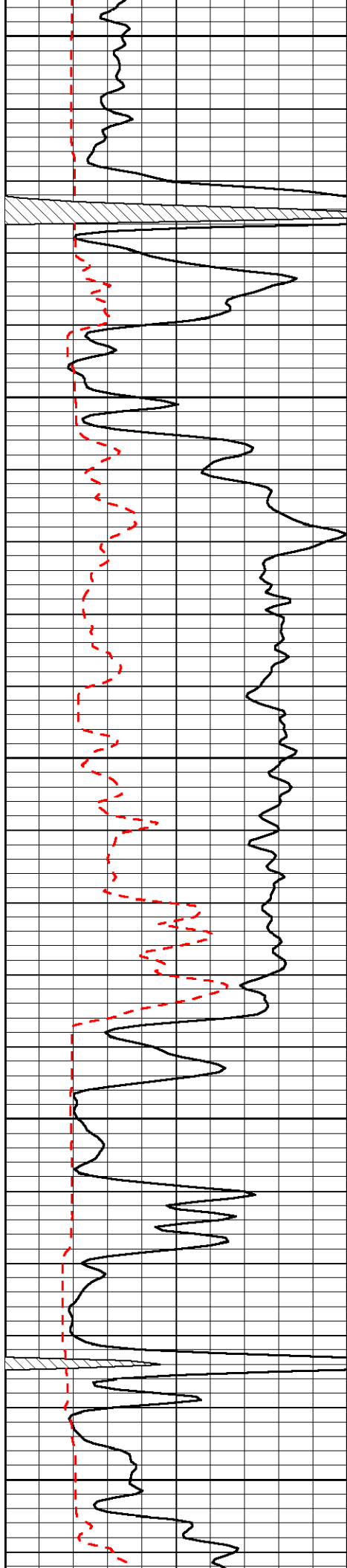


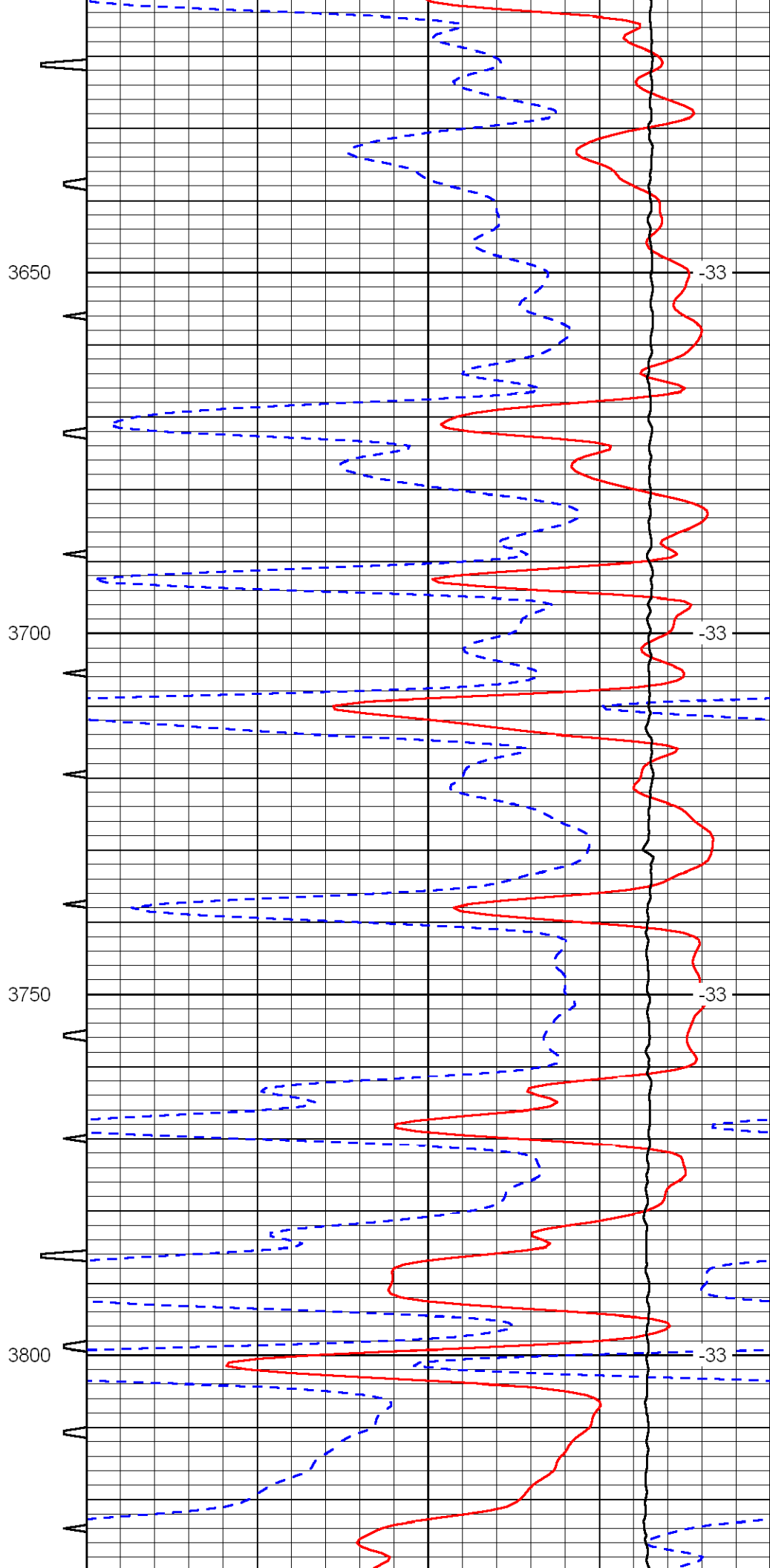
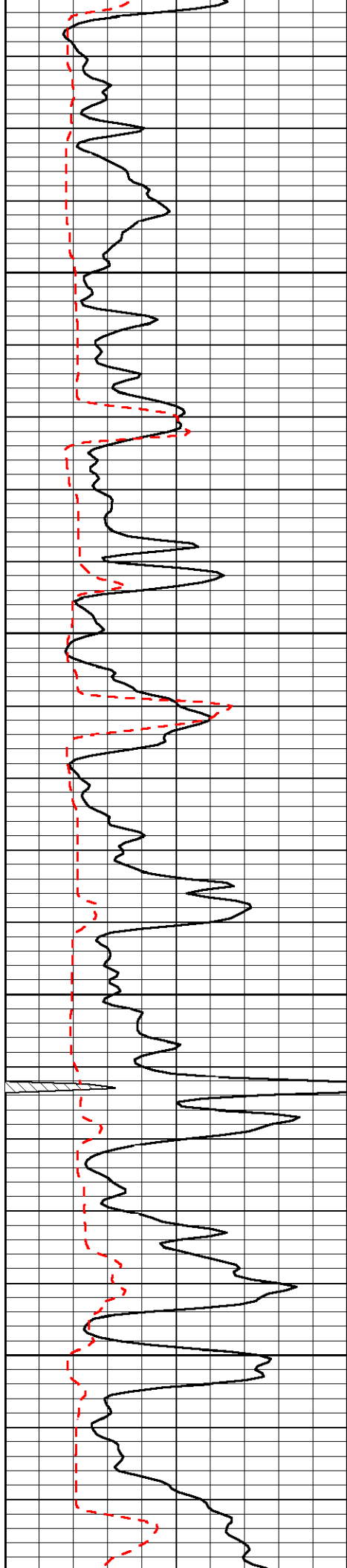


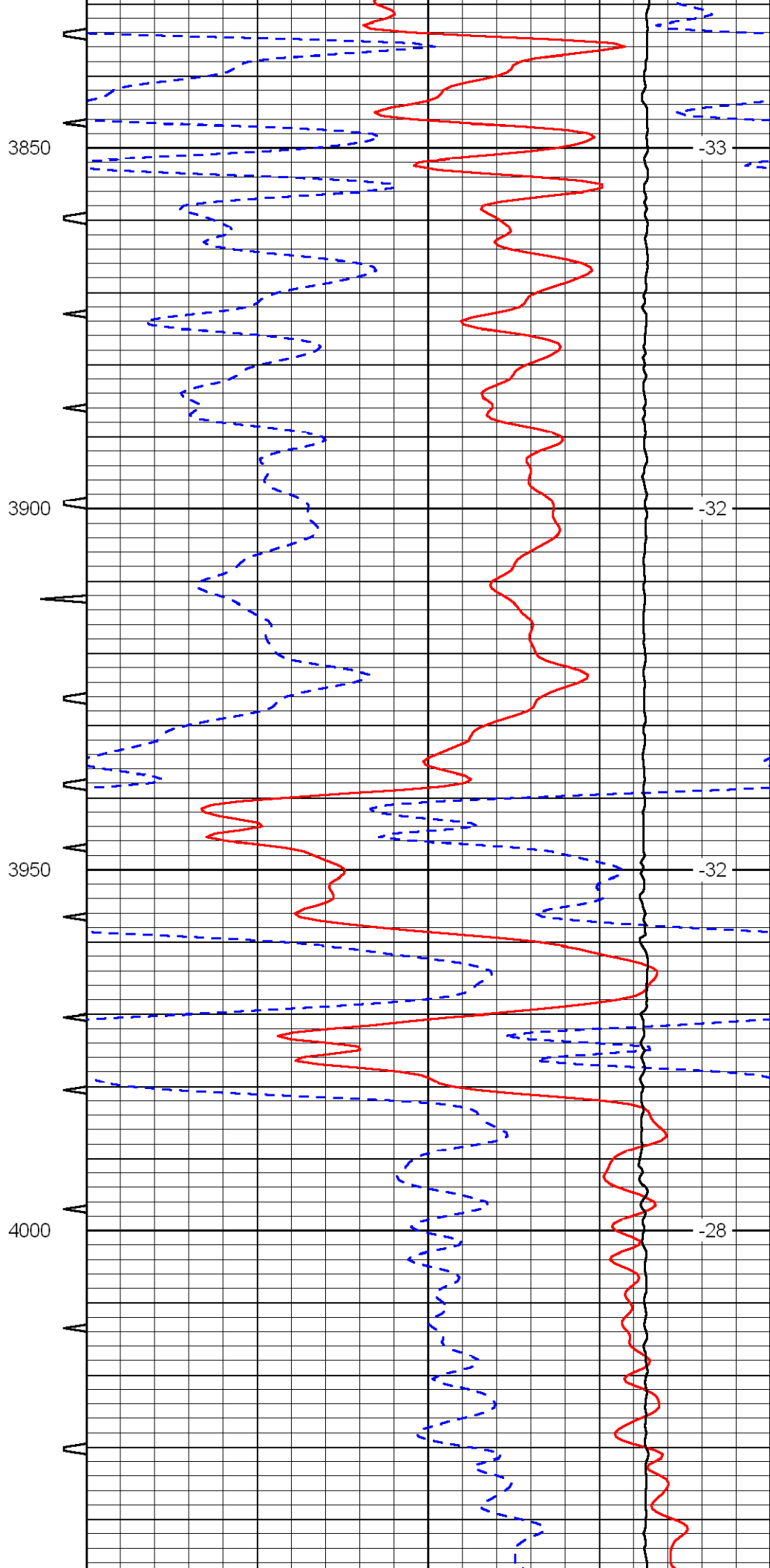
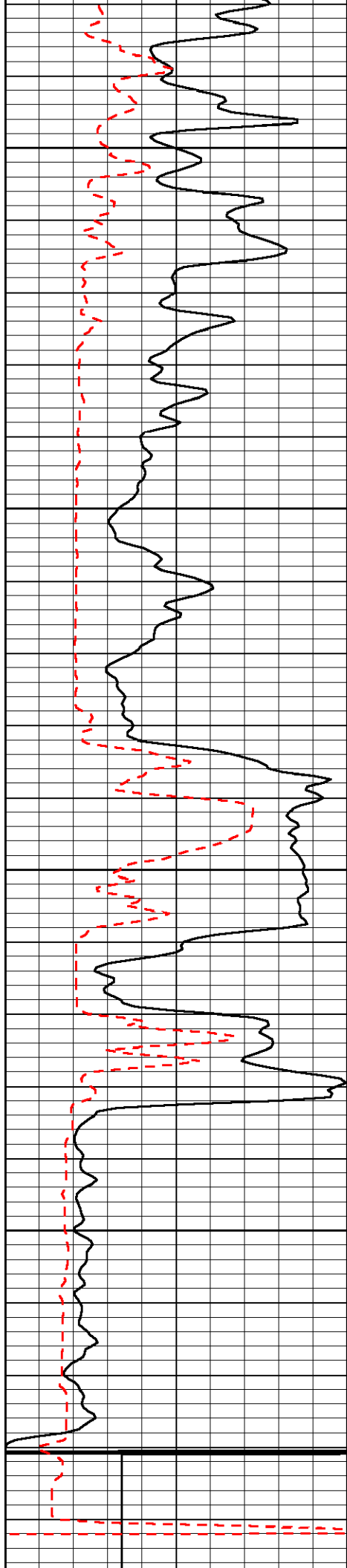


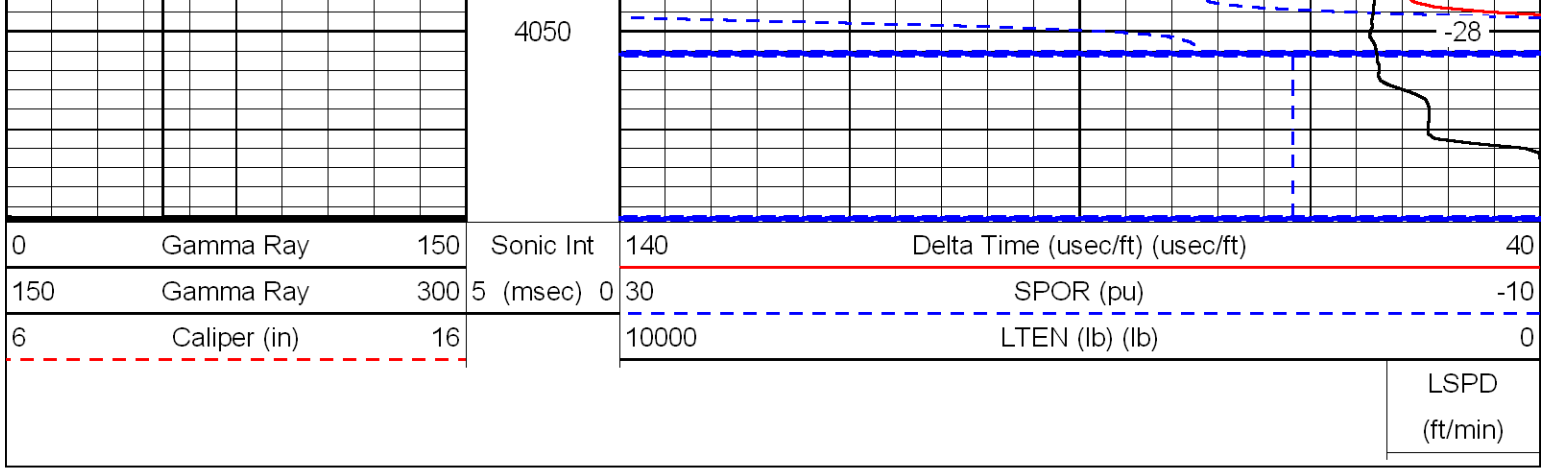












LSPD  
(ft/min)