



# Microresistivity Log

**DIGITAL LOG** (785) 625-3858

API No.	15-145-21,584-00-00		
Company	Murfin Drilling Co Inc.		
Well	Fox No. 1-29	Field	Wildcat
County	Pawnee	State	Kansas
Location	2050' FNL + 2310' FEL		
Sec: 29	Twp: 22S	Rge: 15W	
Permanent Datum	Ground Level	Elevation 2003	Other Services CNL/CDL DIL/BHCS
Log Measured From	Kelly Bushing	5 Ft. Above Perm. Datum	K.B. 2008
Drilling Measured From	Kelly Bushing		D.F. 2003
			G.L. 2003

Date	4/11/2009	
Run Number	Two	
Depth Driller	4055	
Depth Logger	4056	
Bottom Logged Interval	4054	
Top Log Interval	2600	
Casing Driller	8.625 @ 629	
Casing Logger	626	
Bit Size	7.875	
Type Fluid in Hole	Chemical	
Salinity, ppm CL	9,400	
Density / Viscosity	9.1	52
pH / Fluid Loss	10.5	8.8
Source of Sample	Flowline	
Rm @ Meas. Temp	.58 @ 65	
Rmf @ Meas. Temp	.435 @ 65	
Rmc @ Meas. Temp	.783 @ 65	
Source of Rmf / Rmc	Charts	
Rm @ BHT	.32 @ 119	
Operating Rig Time	5 Hours	
Max Rec. Temp. F	119	
Equipment Number	10	
Location	Hays	
Recorded By	Jason Wellbrock	
Witnessed By	Terry McLeod	

<<< Fold Here >>>

All interpretations are opinions based on inferences from electrical or other measurements and we cannot and do not guarantee the accuracy or correctness of any interpretation, and we shall not, except in the case of gross or willful negligence on our part, be liable or responsible for any loss, costs, damages, or expenses incurred or sustained by anyone resulting from any interpretation made by any of our officers, agents or employees. These interpretations are also subject to our general terms and conditions set out in our current Price Schedule.

### Comments

Thank you for using Log-Tech, Inc.  
(785) 625-3858

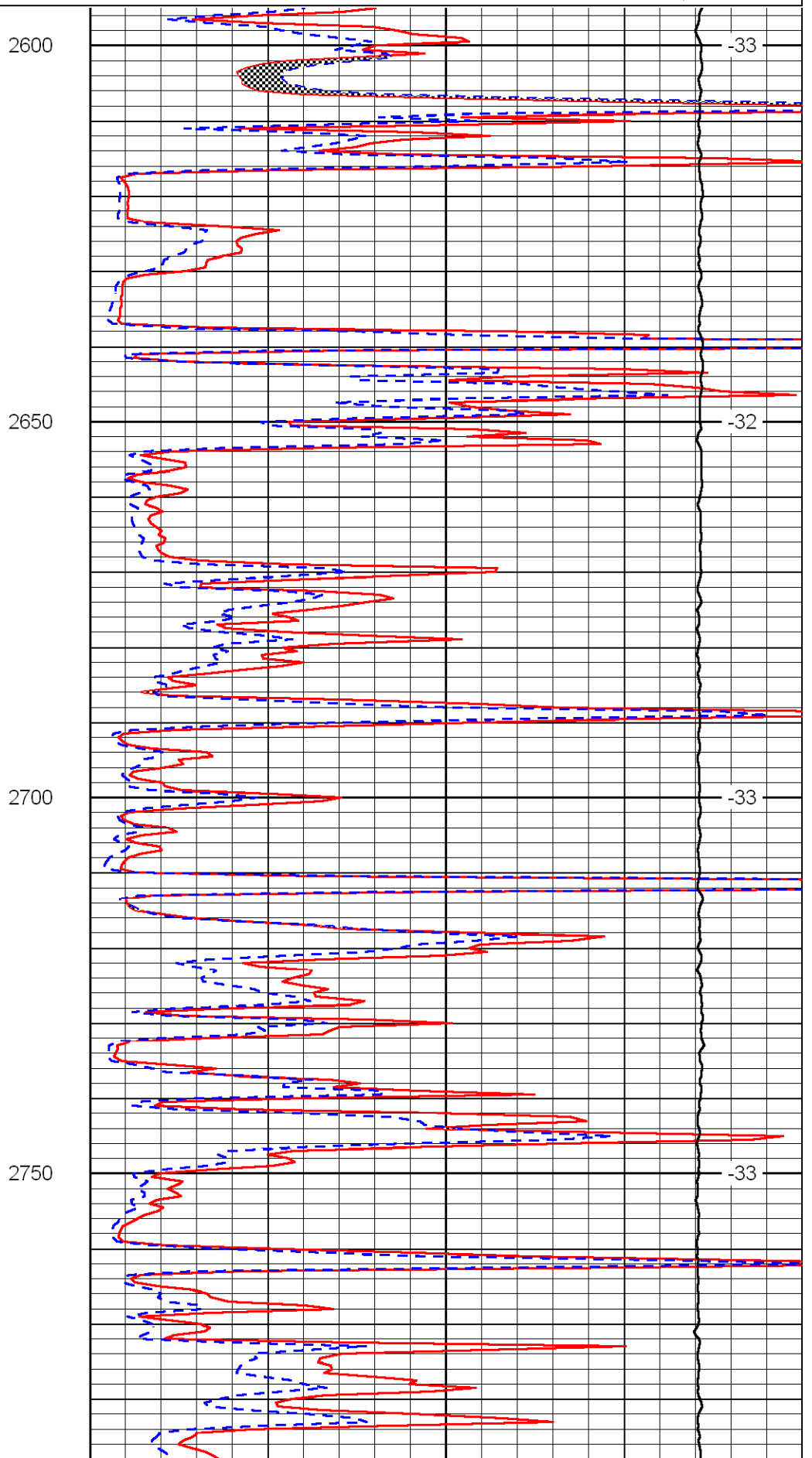
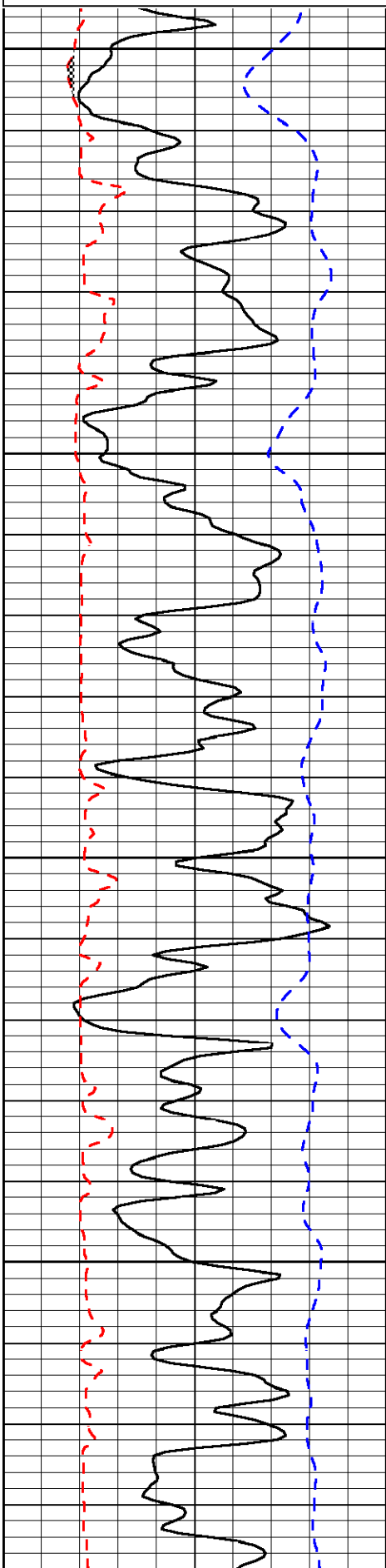
Larned Highway 19, 6 E to county rd 50, 3 1/2 S, W Into

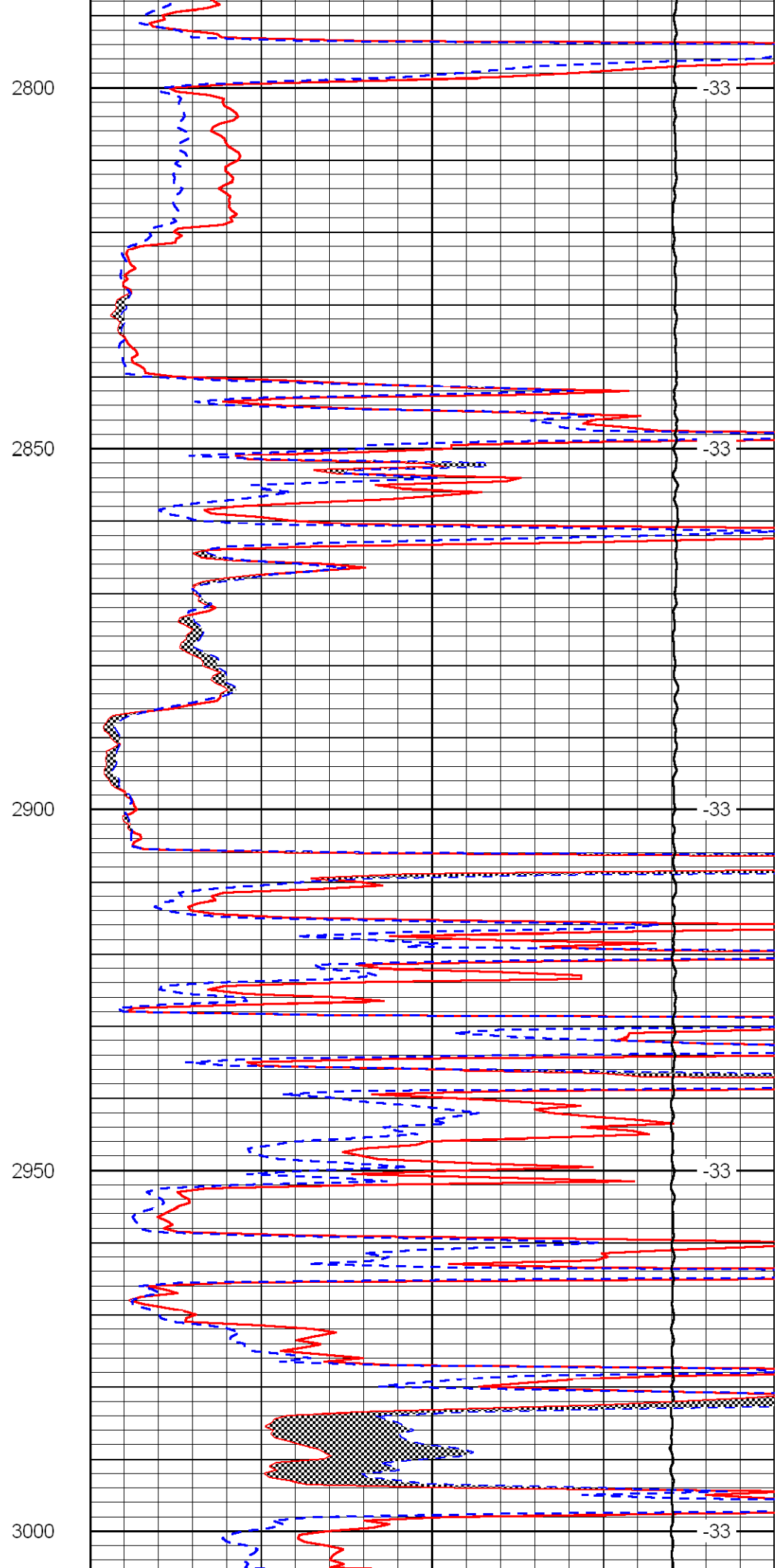
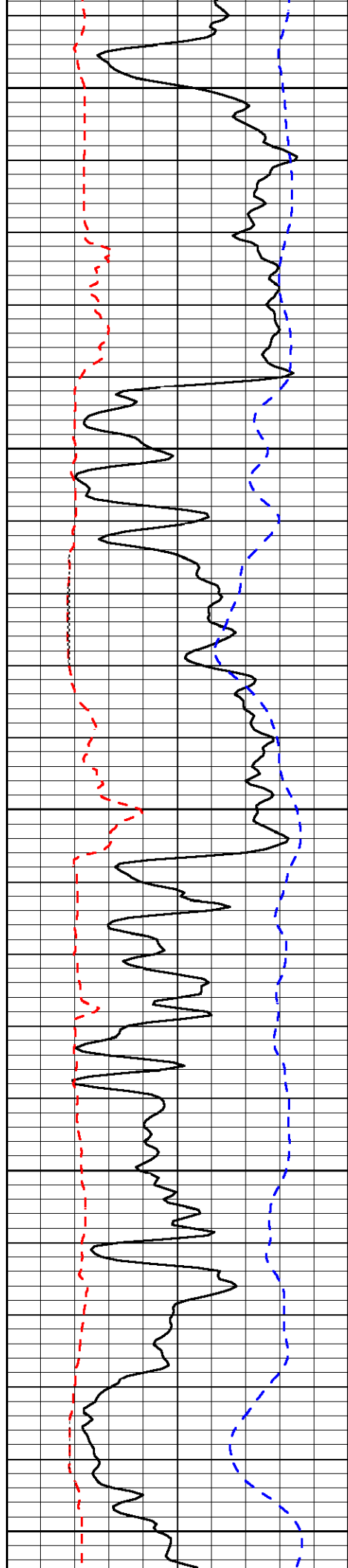
Database File: c:\warrior\data\murfin\_fox #1-29\murfinhd.db  
 Dataset Pathname: dil/murf2in  
 Presentation Format: micro  
 Dataset Creation: Sat Apr 11 14:26:33 2009  
 Charted by: Depth in Feet scaled 1:240

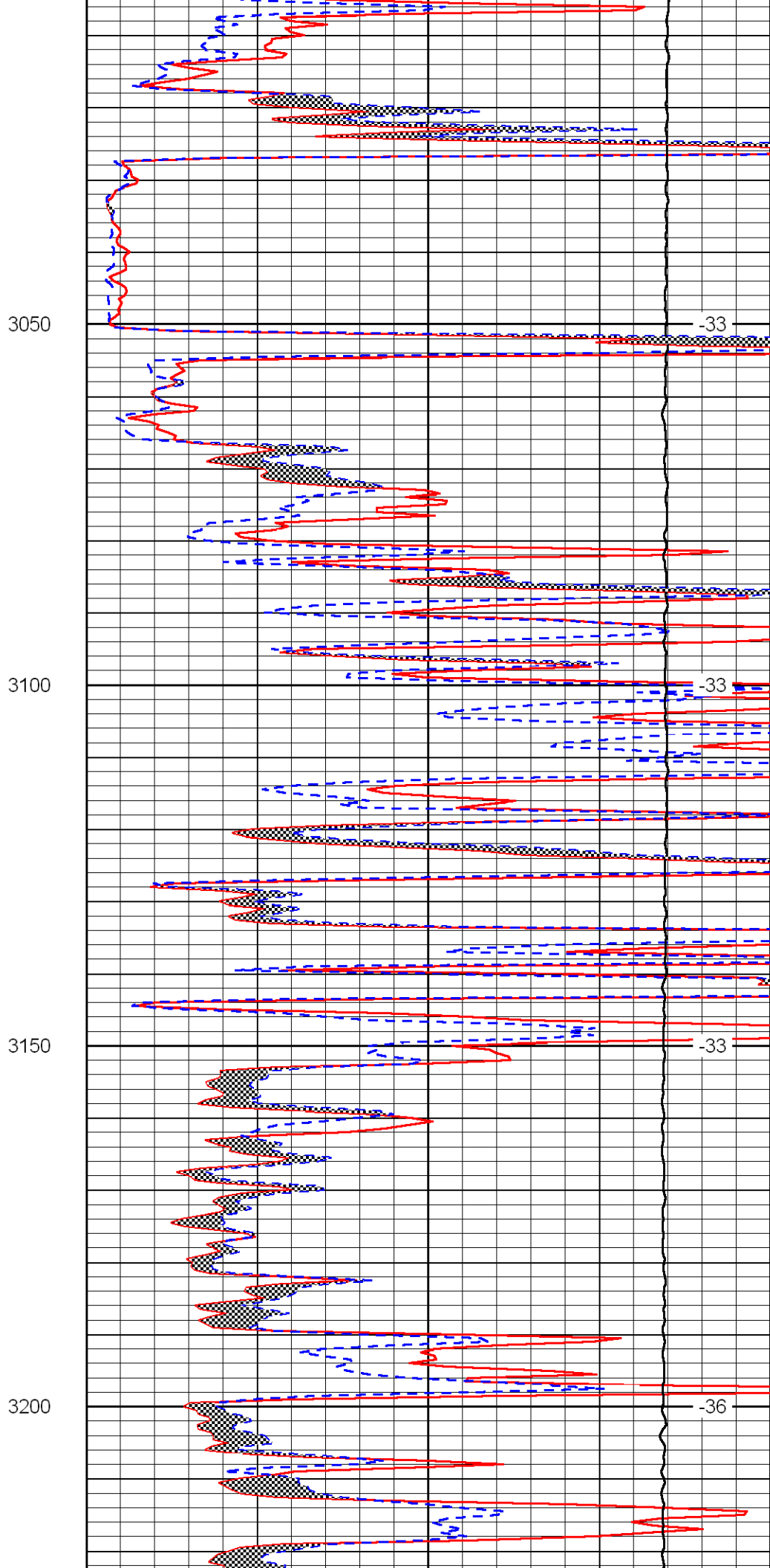
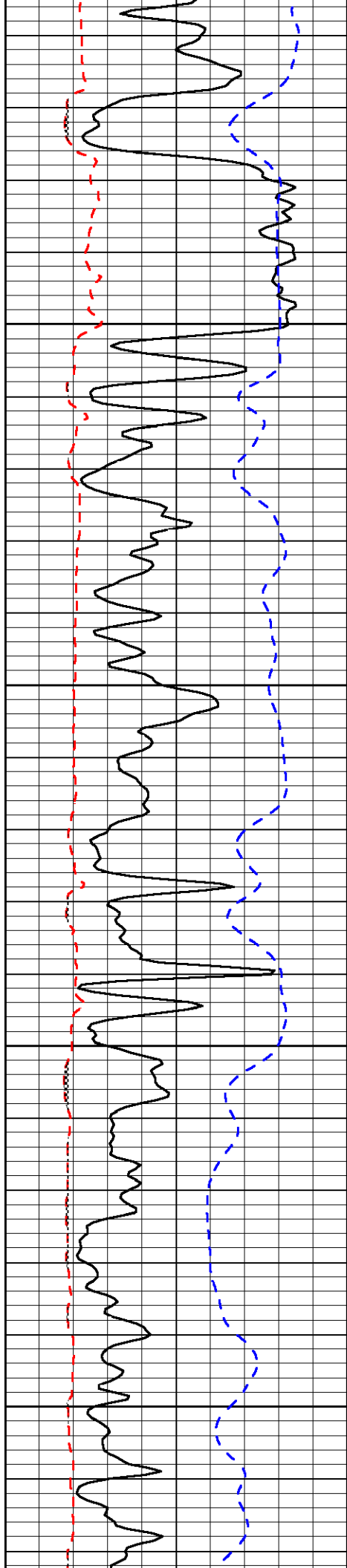
0	Gamma Ray	150
6	Micro Log Caliper (in)	16
-200	SP (MV)	0

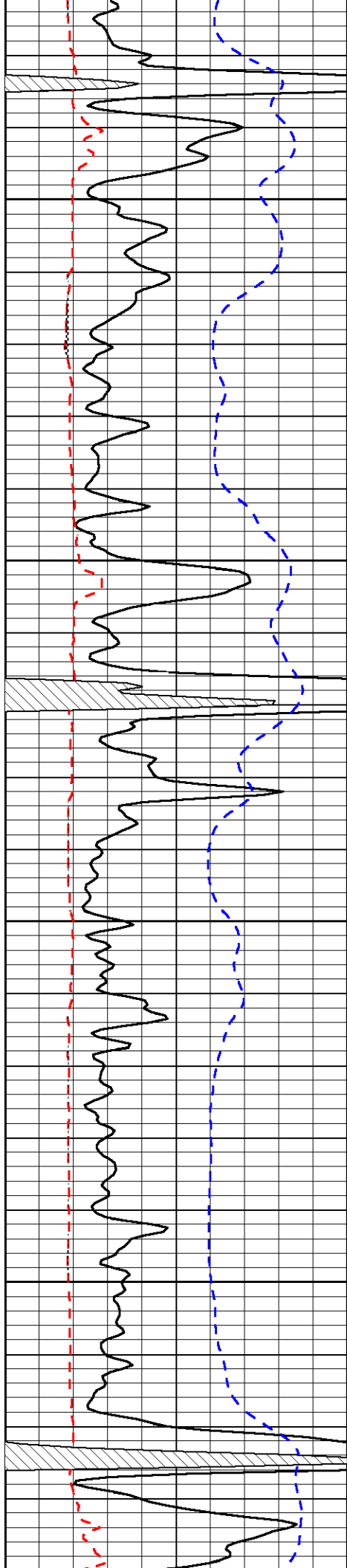
0	Micro Inverse 1 X 1 (Ohm-m)	40
0	Micro Normal 2" (Ohm-m)	40
10000	Line Weight (lb)	0

LSPD  
(ft/min)







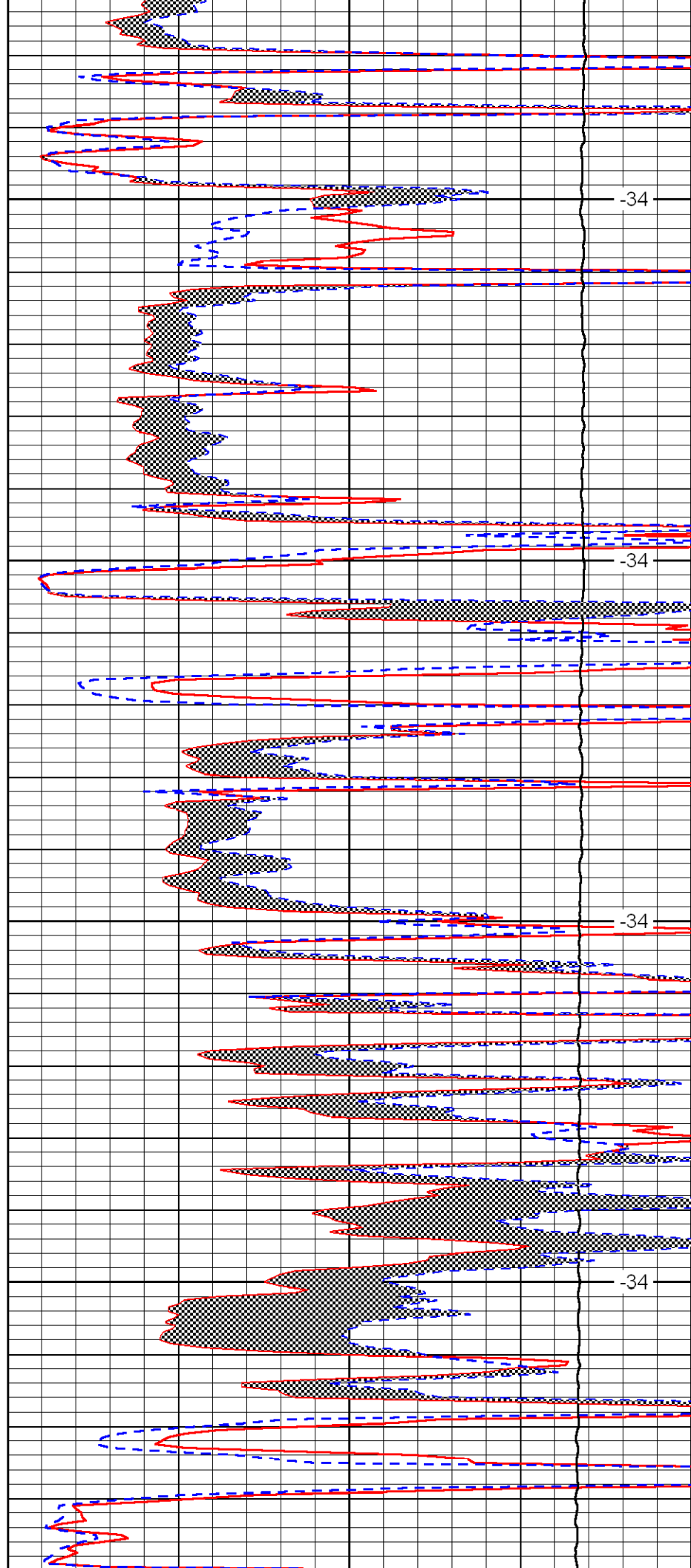


3250

3300

3350

3400

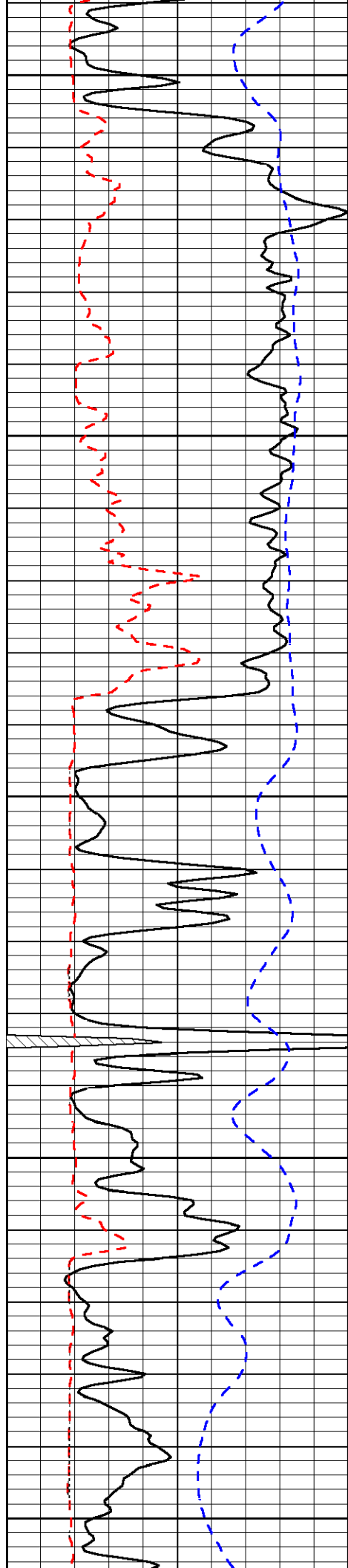


-34

-34

-34

-34



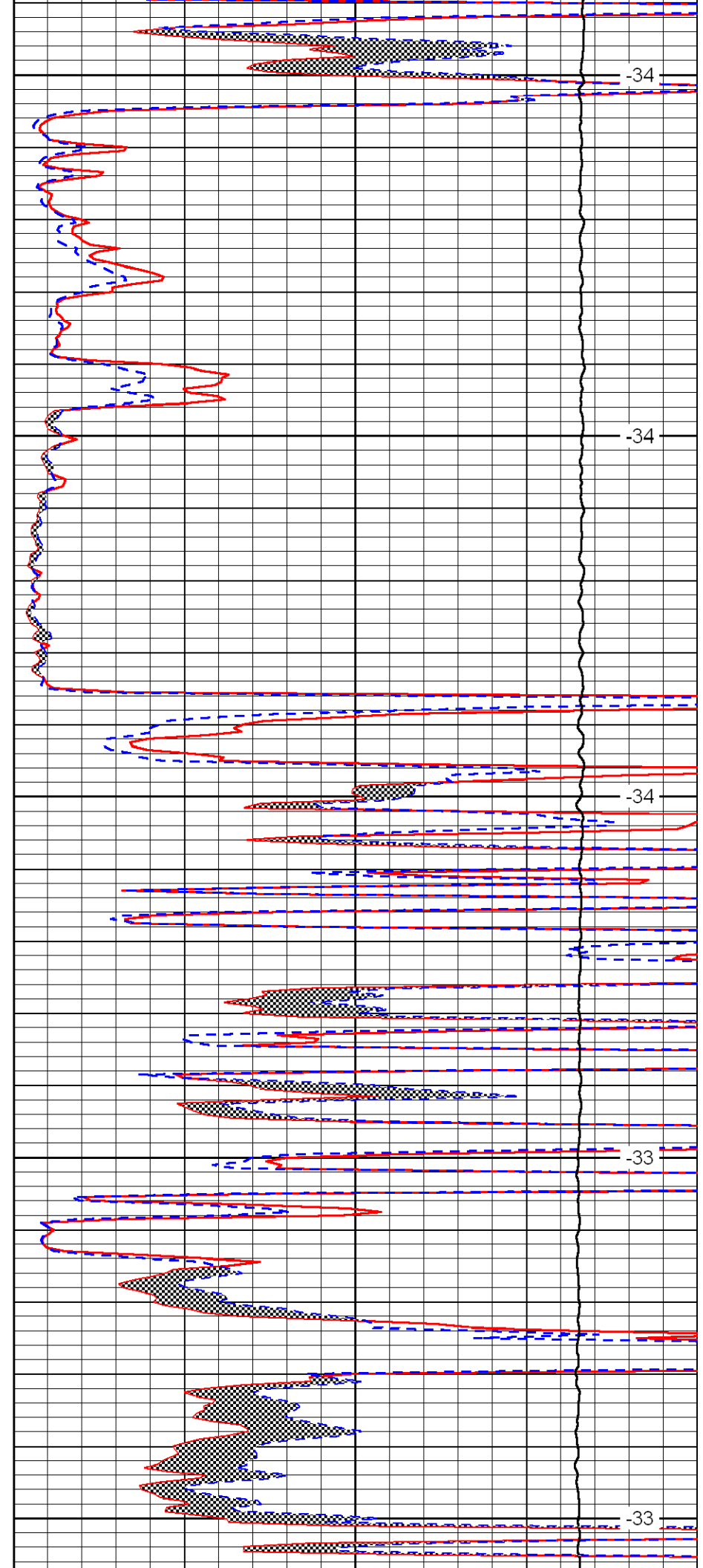
3450

3500

3550

3600

3650



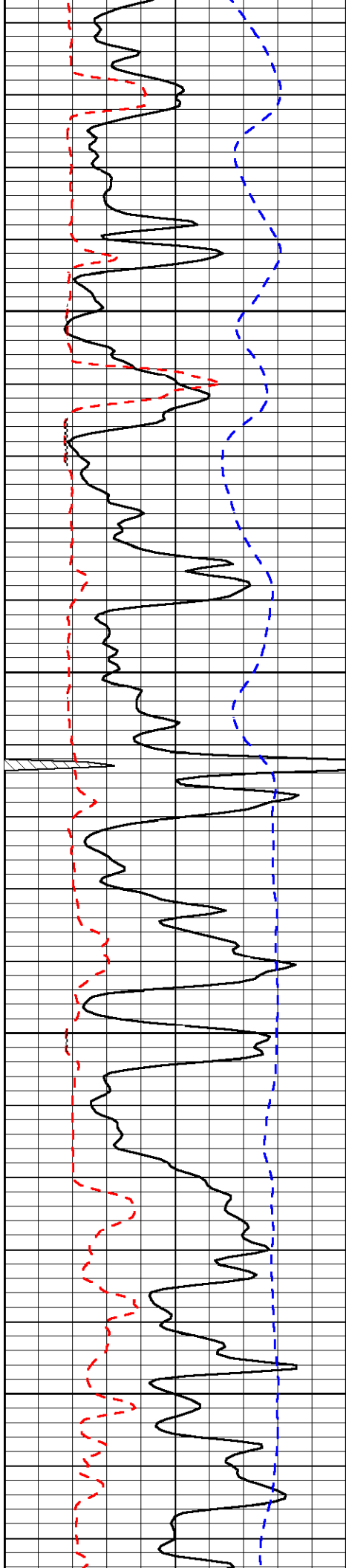
-34

-34

-34

-33

-33

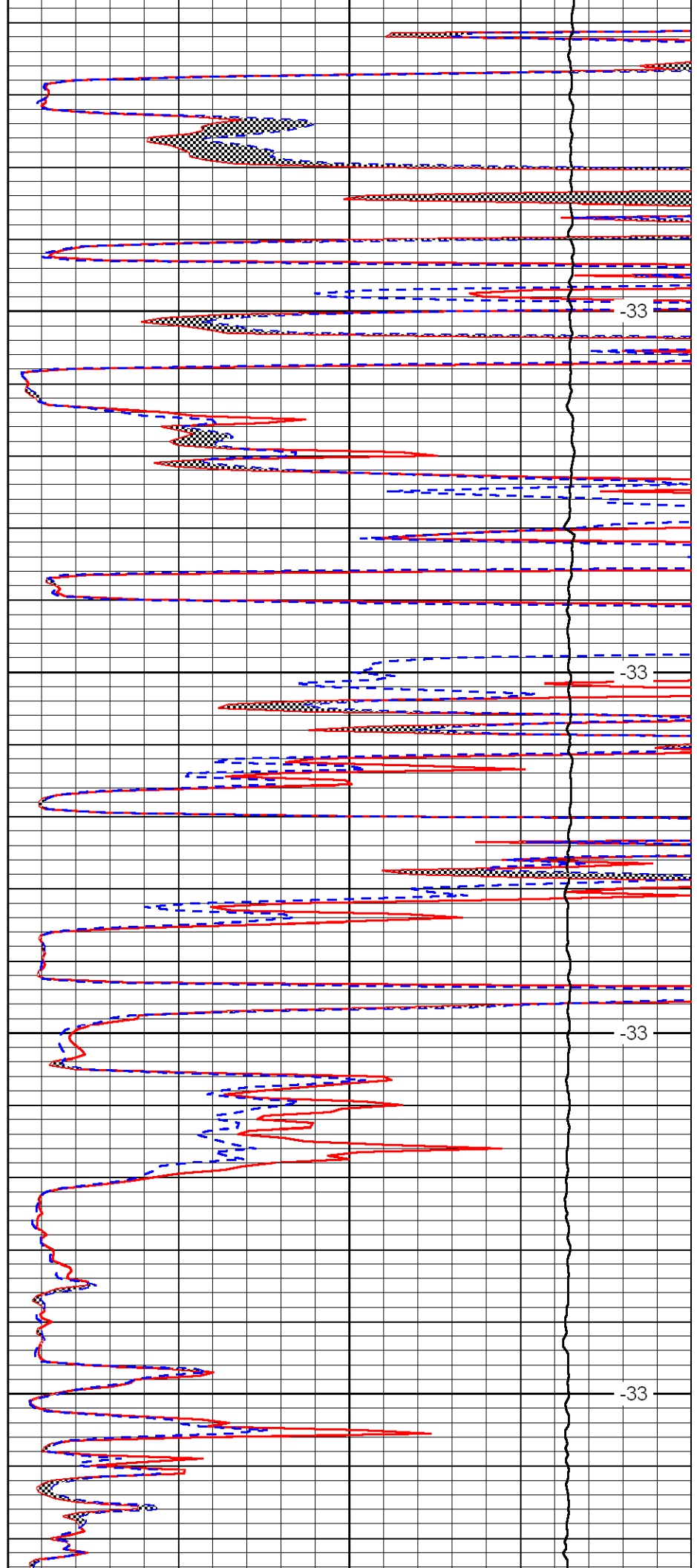


3700

3750

3800

3850

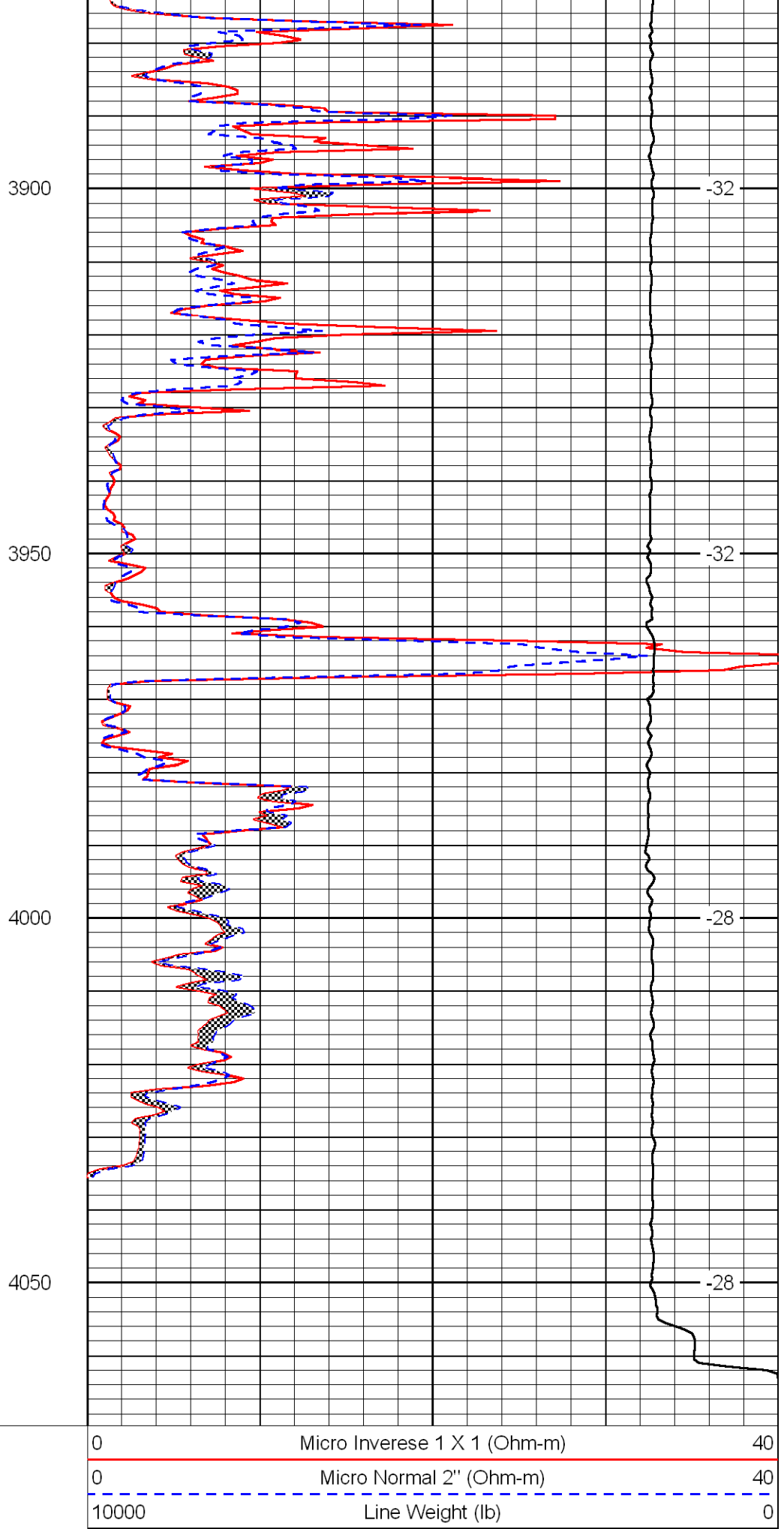
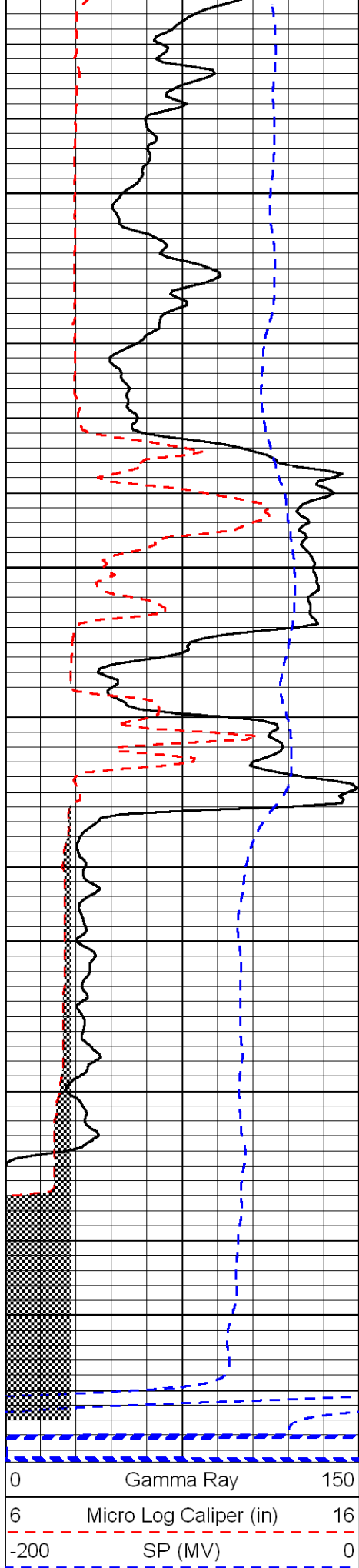


-33

-33

-33

-33



LSPD  
(ft/min)

