



Dual Compensated
Porosity Log

DIGITAL LOG (785) 625-3858

API No. 15-145-21,584-00-00

Company **Murfin Drilling Co Inc.**
 Well **Fox No. 1-29**
 Field **Wildcat**
 County **Pawnee** State **Kansas**

Location **2050' FNL + 2310' FEL**

Sec: **29** Twp: **22S** Rge: **15W**

Other Services
DIL
MEL/BHCS

Permanent Datum **Ground Level** Elevation **2003**
 Log Measured From **Kelly Bushing** **5** Ft. Above Perm. Datum
 Drilling Measured From **Kelly Bushing**

K.B. 2008
 D.F. 2003
 G.L. 2003

| | | |
|------------------------|-----------------|--|
| Date | 4/11/2009 | |
| Run Number | One | |
| Type Log | CNL / CDL | |
| Depth Driller | 4055 | |
| Depth Logger | 4056 | |
| Bottom Logged Interval | 4034 | |
| Top Logged Interval | 2600 | |
| Type Fluid In Hole | Chemical | |
| Salinity, PPM CL | 9,400 | |
| Density | 9.1 | |
| Level | Full | |
| Max. Rec. Temp. F | 119 | |
| Operating Rig Time | 5 Hours | |
| Equipment -- Location | 10 Hays | |
| Recorded By | Jason Wellbrock | |
| Witnessed By | Terry Mcleod | |

| Run No | Bit | Borehole Record | | Casing Record | |
|--------|-------|-----------------|------|---------------|-----|
| | | From | To | From | To |
| 1 | 12.25 | 00 | 629 | 8.625 | 24# |
| 2 | 7.875 | 629 | 4055 | | |
| | | | | | |
| | | | | | |
| | | | | | |
| | | | | | |
| | | | | | |
| | | | | | |
| | | | | | |

<<< Fold Here >>>

All interpretations are opinions based on inferences from electrical or other measurements and we cannot and do not guarantee the accuracy or correctness of any interpretation, and we shall not, except in the case of gross or willful negligence on our part, be liable or responsible for any loss, costs, damages, or expenses incurred or sustained by anyone resulting from any interpretation made by any of our officers, agents or employees. These interpretations are also subject to our general terms and conditions set out in our current Price Schedule.

Comments

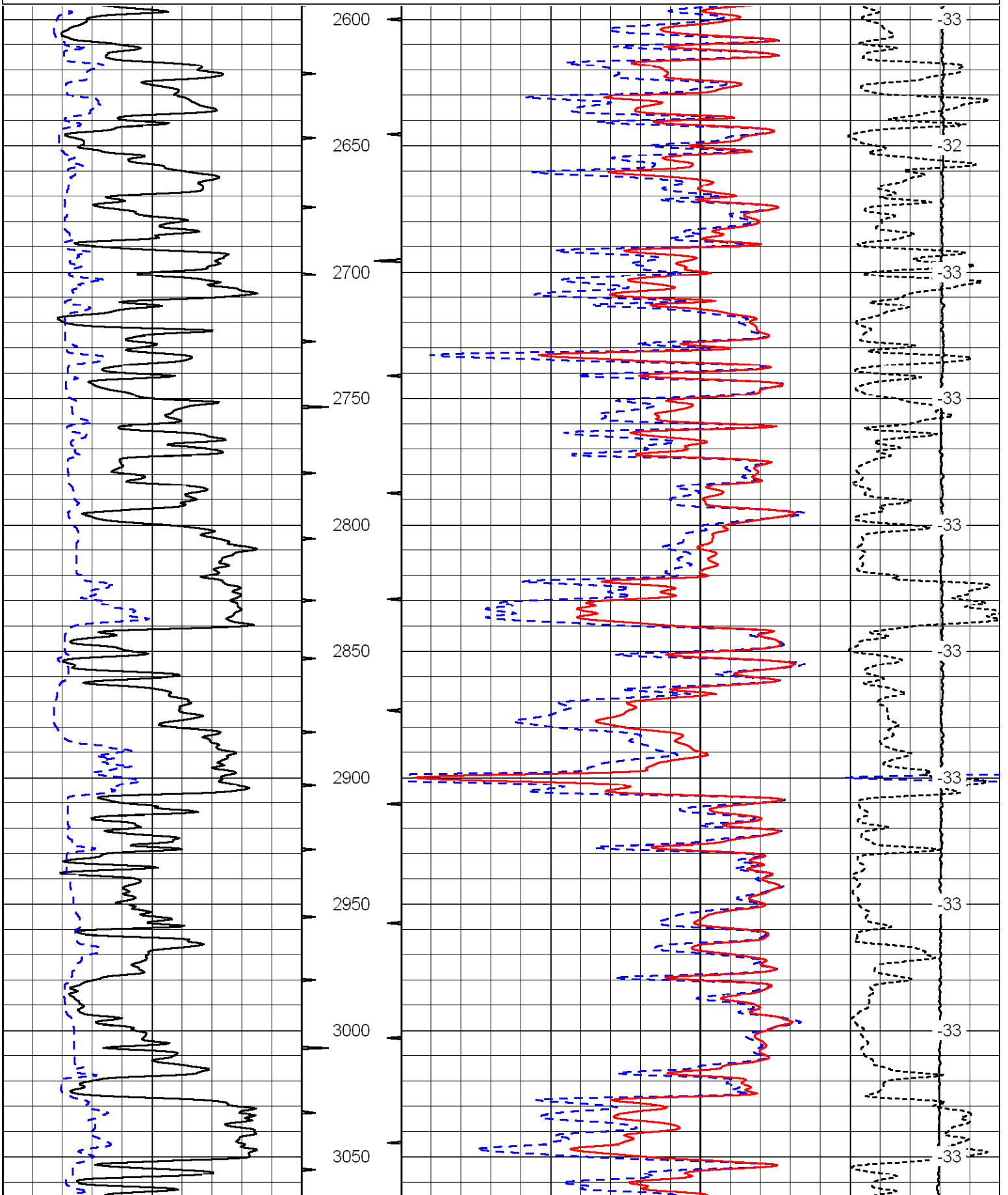
Thank you for using Log-Tech, Inc.
 (785) 625-3858

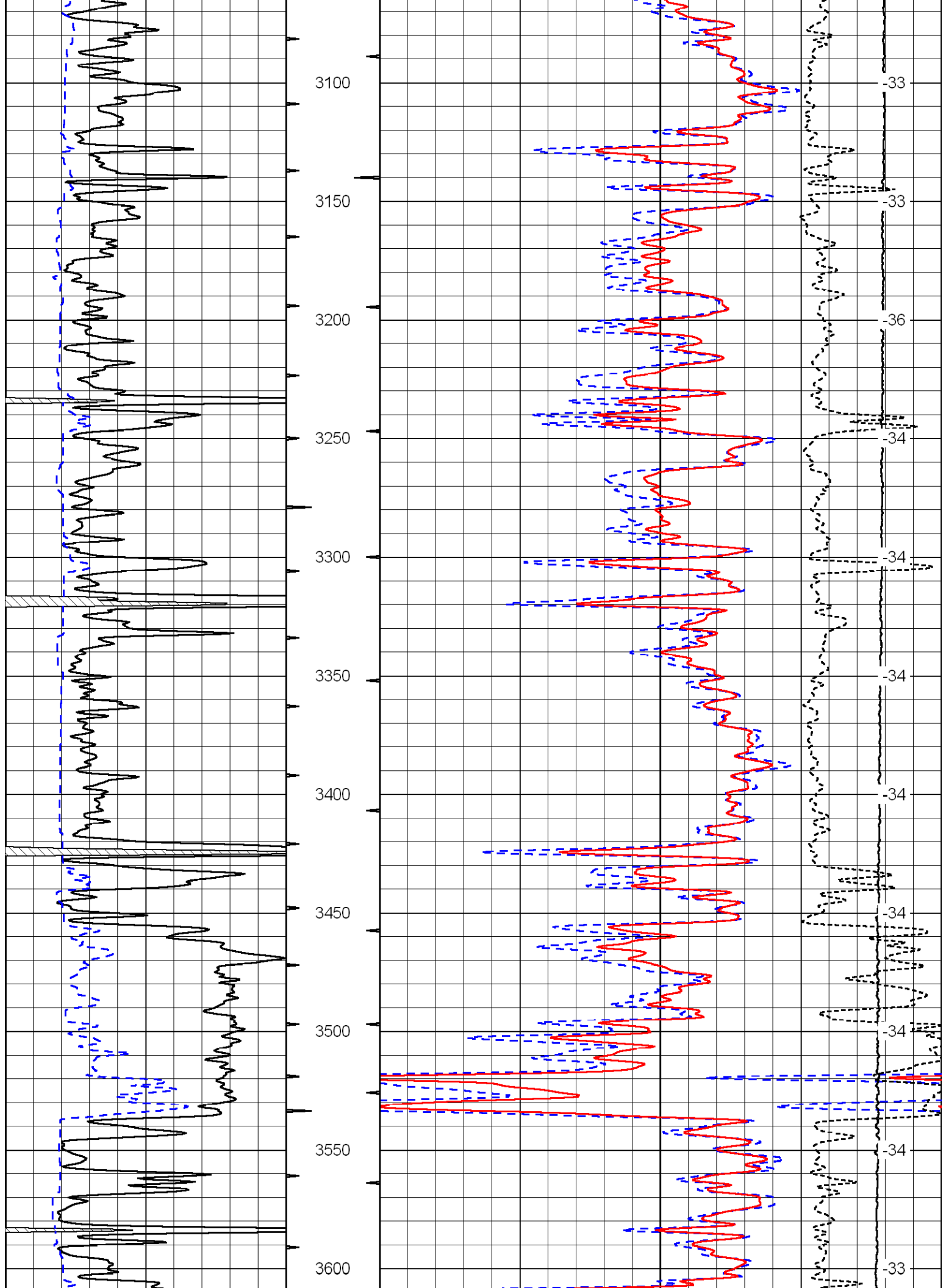
Larned Highway 19, 6 E to county rd 50, 3 1/2 S, W Into

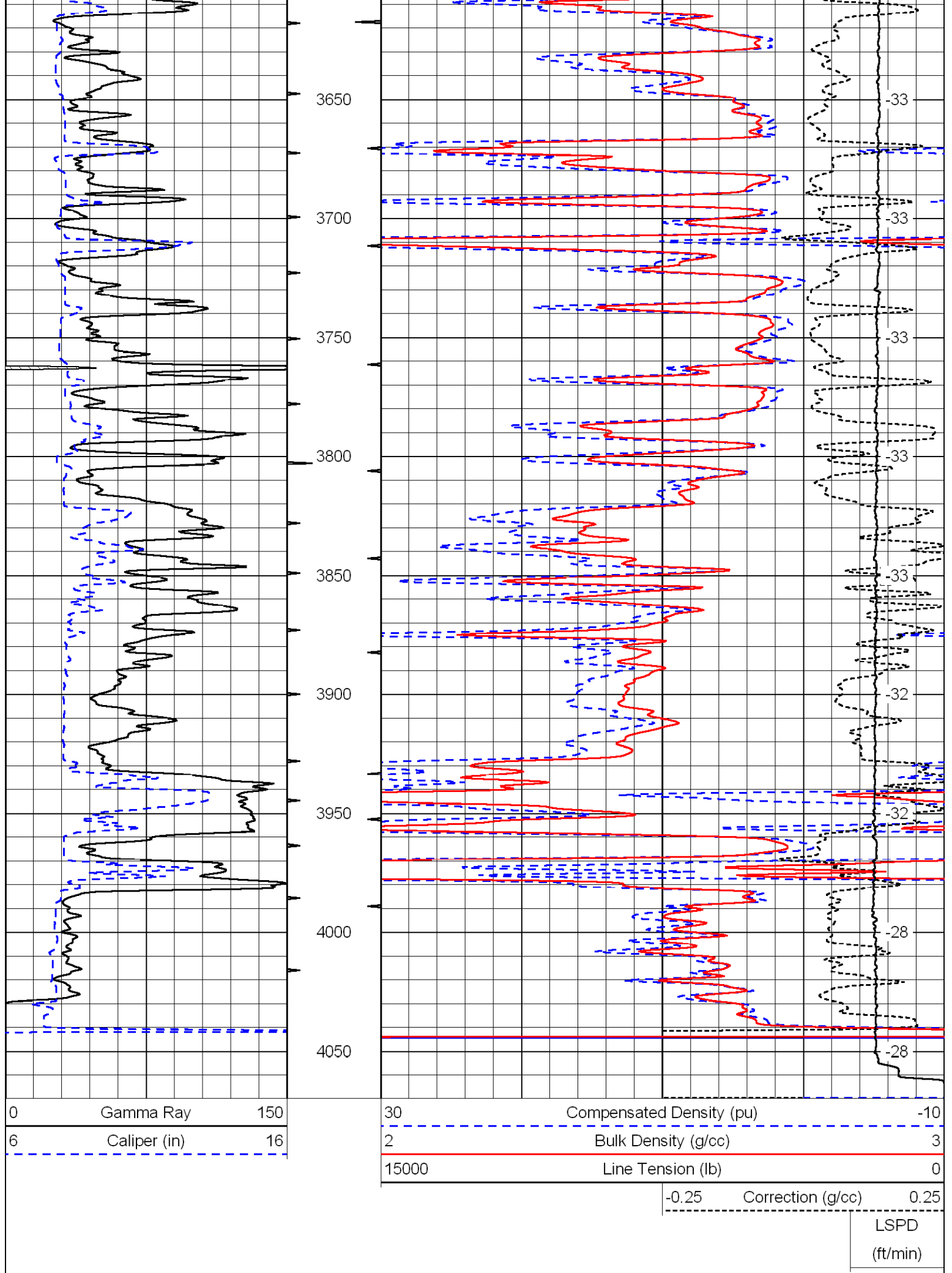
Database File: c:\warrior\data\murfin_fox #1-29\murfinhd.db
 Dataset Pathname: dil/murf2in
 Presentation Format: cdl
 Dataset Creation: Sat Apr 11 14:26:33 2009
 Charted by: Depth in Feet scaled 1:600

| | | |
|---|--------------|-----|
| 0 | Gamma Ray | 150 |
| 6 | Caliper (in) | 16 |

| | | |
|-------|--------------------------|------------------|
| 30 | Compensated Density (pu) | -10 |
| 2 | Bulk Density (g/cc) | 3 |
| 15000 | Line Tension (lb) | 0 |
| -0.25 | Correction (g/cc) | 0.25 |
| | | LSPD (ft/min) |







Database File: c:\warrior\data\murfin_fox #1-29\murfinhd.db
 Dataset Pathname: dil/murf2in
 Presentation Format: cndlspec
 Dataset Creation: Sat Apr 11 14:26:33 2009
 Charted by: Depth in Feet scaled 1:240

| | | | | | | |
|---|--------------|-----|-------|--------------------------------------|-------------------|----------|
| 0 | Gamma Ray | 150 | 30 | Compensated Neutron (Limestone) (pu) | -10 | |
| 6 | Caliper (in) | 16 | 30 | Compensated Density (2.71 ma) (pu) | -10 | |
| | | | 15000 | Line Tension (lb) | 0 | |
| | | | | -0.25 | Correction (g/cc) | 0.25 |
| | | | | | LSPD | (ft/min) |

