



**Borehole Compensated
Sonic Log**

DIGITAL LOG (785) 625-3858

API No. 15-163-23,808-00-00	Company Murfin Drilling Co., Inc	Location 330' FSL & 2200' FEL	Other Services CNL/CDL MEL/DIL
Well Collins No. 1-28	County Rooks		
Field Wildcat	State Kansas		
Sec: 28	Twp: 10 S	Rge: 18 W	Elevation K.B. 2065 D.F. 2060 G.L. 2060
Permanent Datum Log Measured From Drilling Measured From	Ground Level Kelly Bushing Kelly Bushing	Elevation 2060 5 Ft. Above Perm. Datum	

Date	6/25/09
Run Number	Two
Type Log	BHC Sonic
Depth Driller	3720
Depth Logger	3719
Bottom Logged Interval	3708
Top Logged Interval	200
Type Fluid In Hole	Chemical
Salinity, PPM CL	3,800
Density	9.4
Level	Full
Max. Rec. Temp. F	115
Operating Rig Time	5 1/2 Hours
Equipment -- Location	4 Hays
Recorded By	K. Bange
Witnessed By	Rocky Milford

Run No	Bit	Borehole Record		Casing Record	
		From	To	From	To
1	12.25	00	207	8.625	24#
2	7.875	207	3720		

<<< Fold Here >>>

All interpretations are opinions based on inferences from electrical or other measurements and we cannot and do not guarantee the accuracy or correctness of any interpretation, and we shall not, except in the case of gross or willful negligence on our part, be liable or responsible for any loss, costs, damages, or expenses incurred or sustained by anyone resulting from any interpretation made by any of our officers, agents or employees. These interpretations are also subject to our general terms and conditions set out in our current Price Schedule.

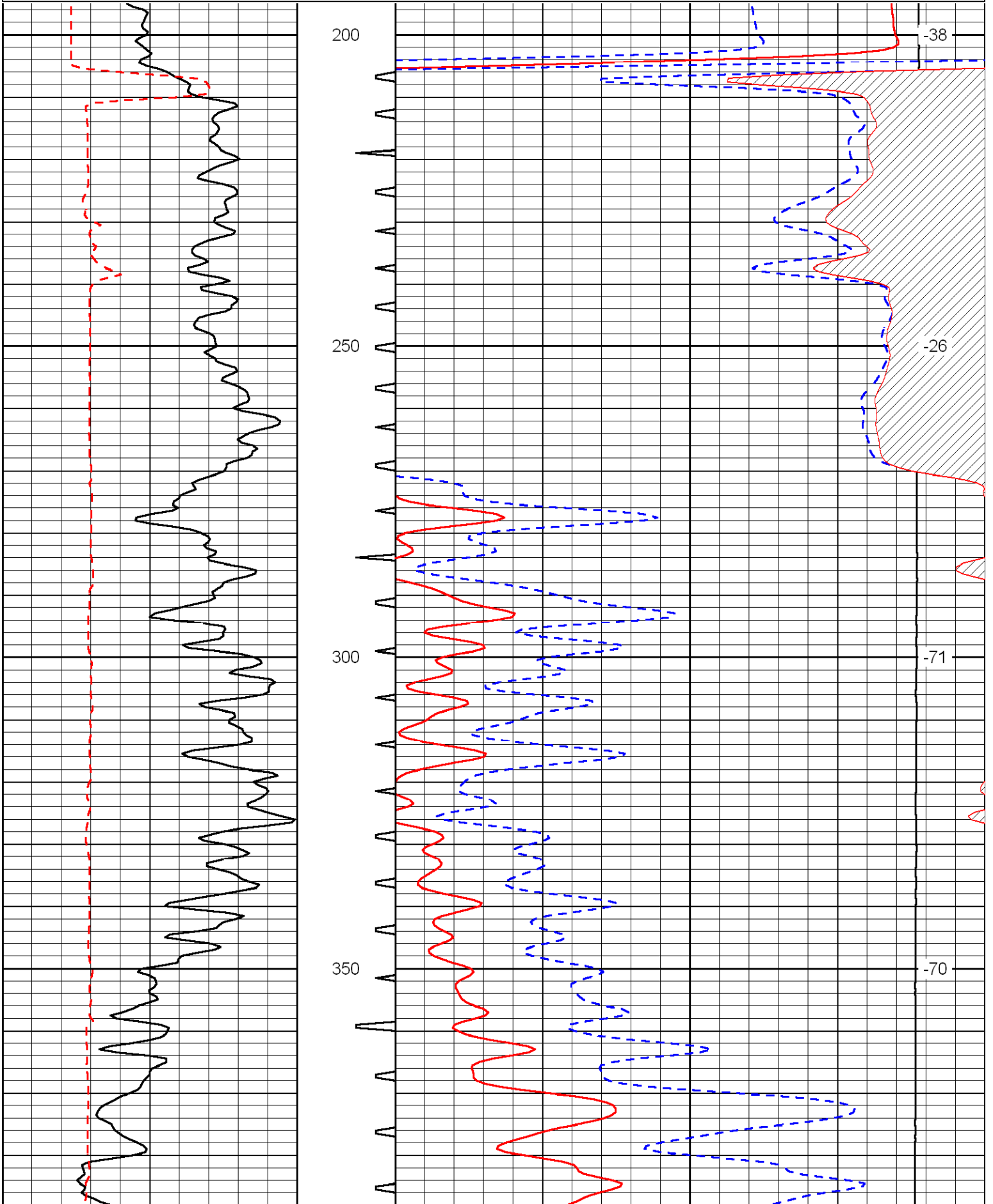
Comments

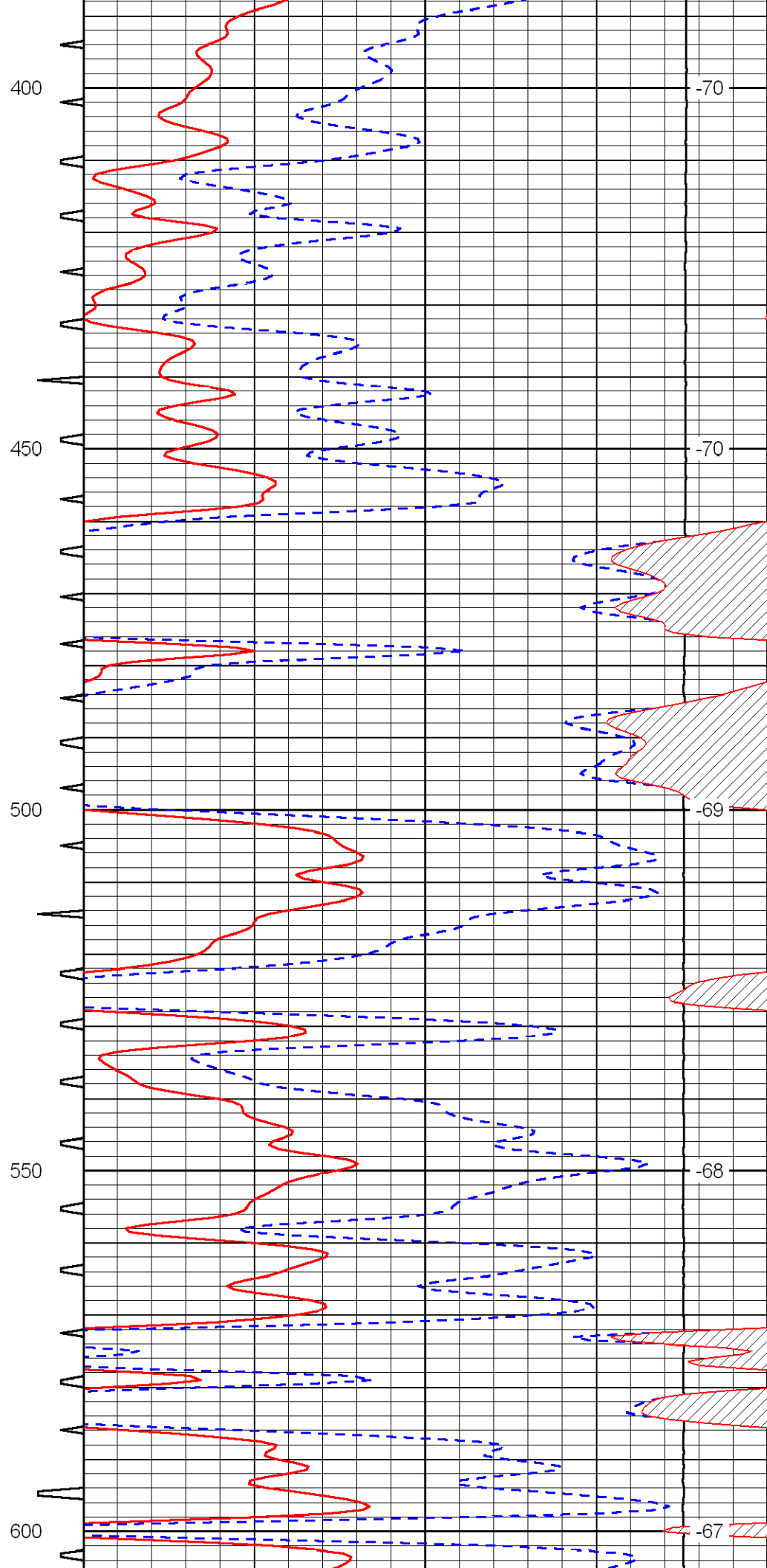
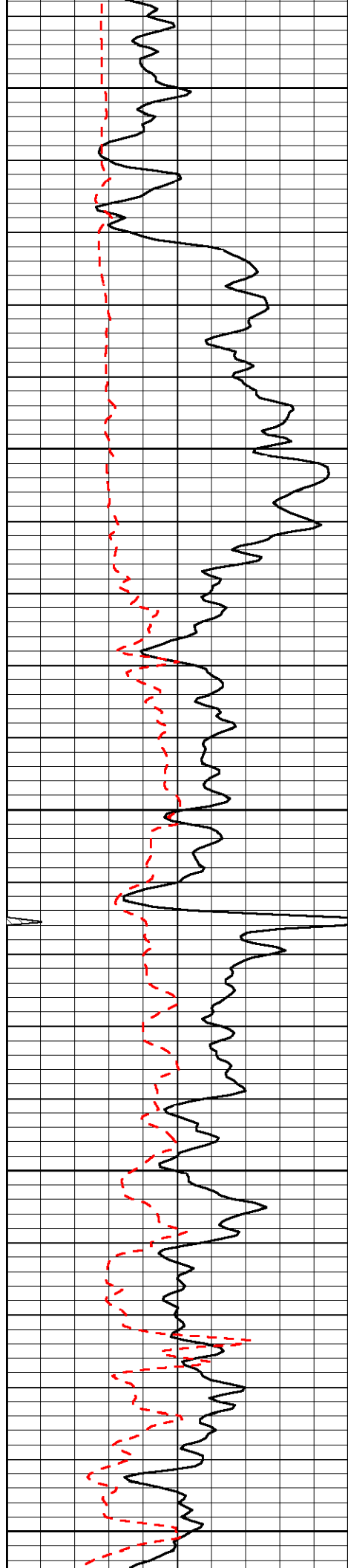
Thank you for using Log-Tech, Inc.
(785) 625-3858

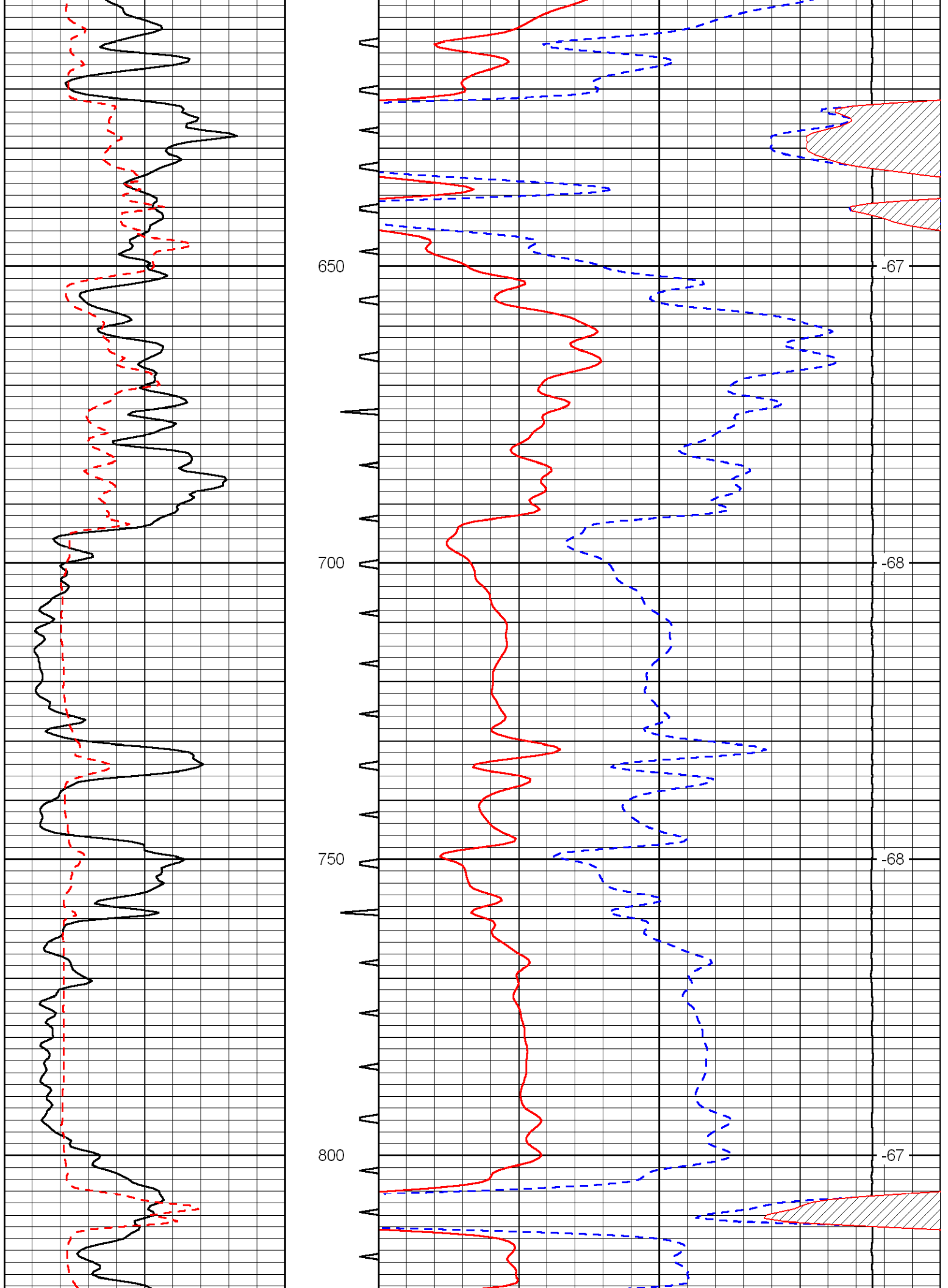
Hays, 18 N to cc rd, 1 1/2 W to 16 rd, 1/2 S, 1/2 W, 1/2 S into

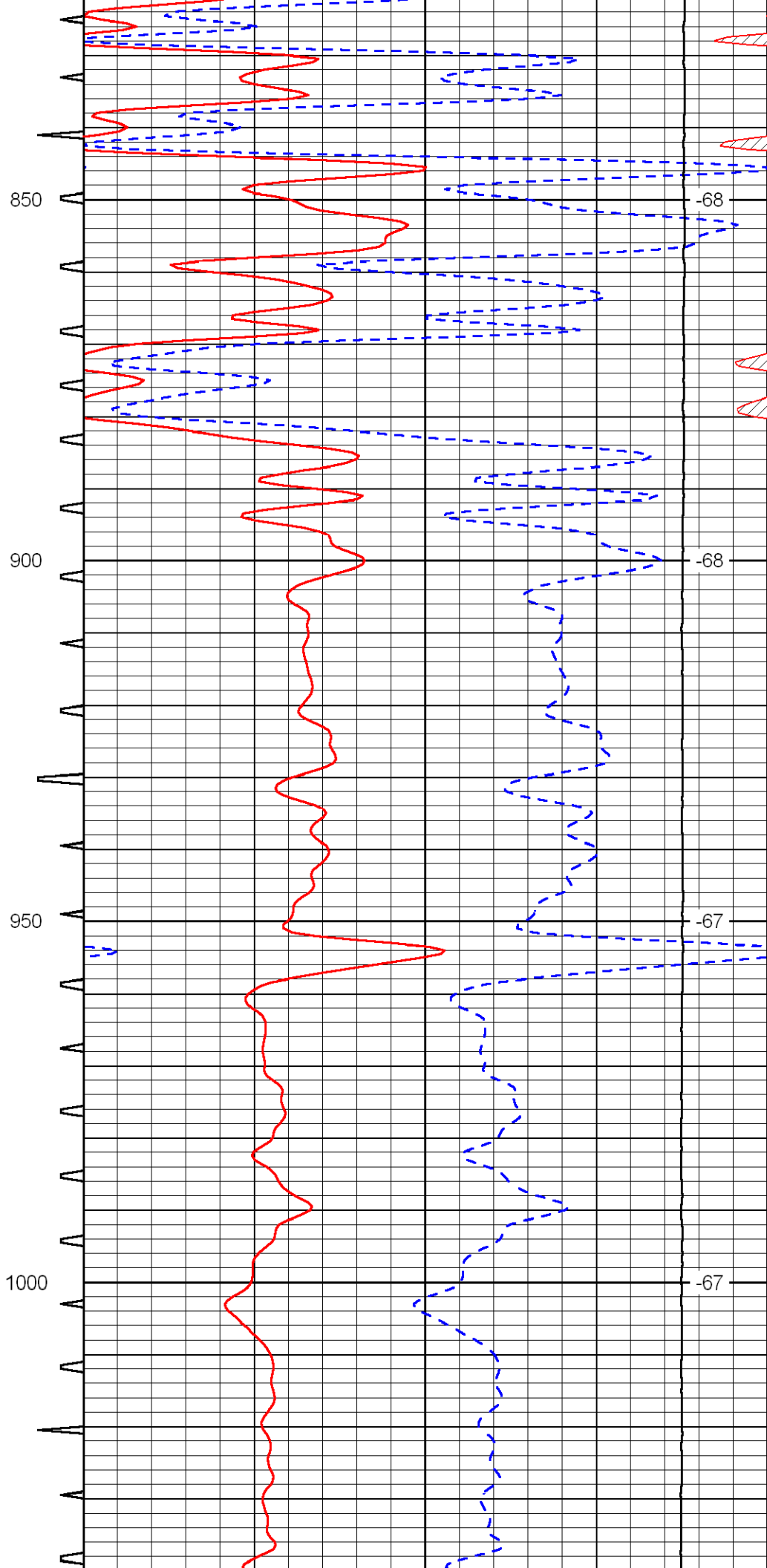
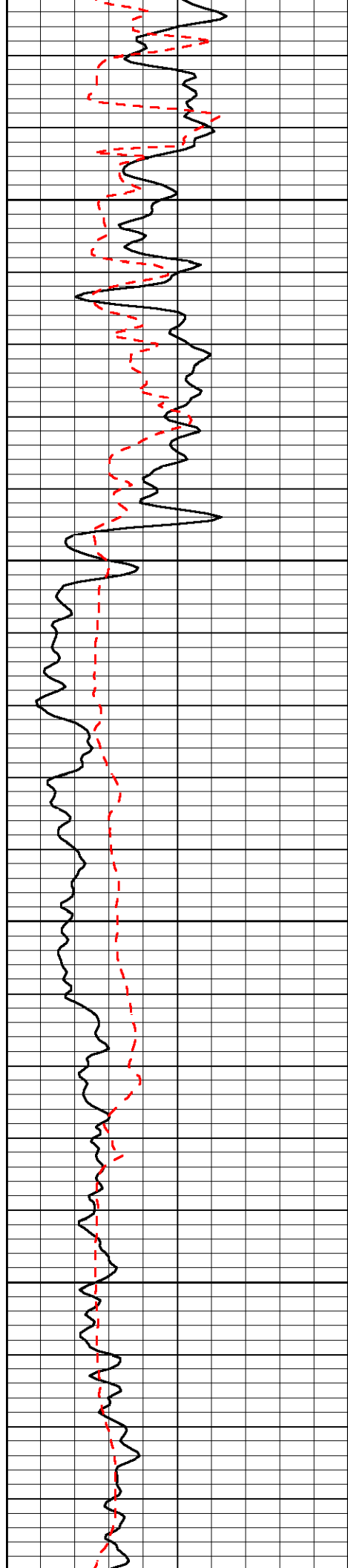
Database File: c:\warrior\data\murfin_collins no. 1-28\murfin062509hd.db
 Dataset Pathname: dil\murf2in
 Presentation Format: sonic
 Dataset Creation: Thu Jun 25 16:06:00 2009
 Charted by: Depth in Feet scaled 1:240

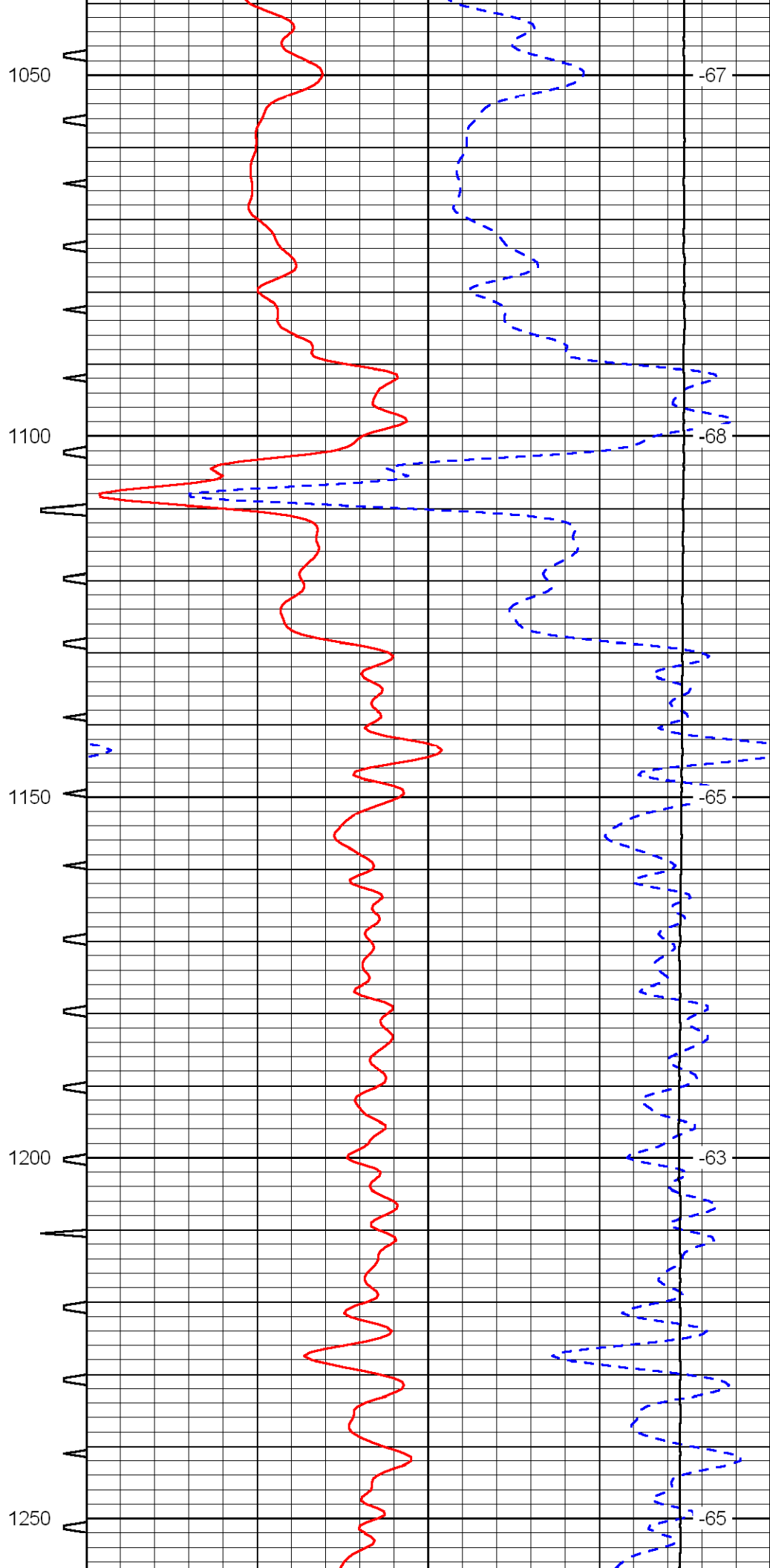
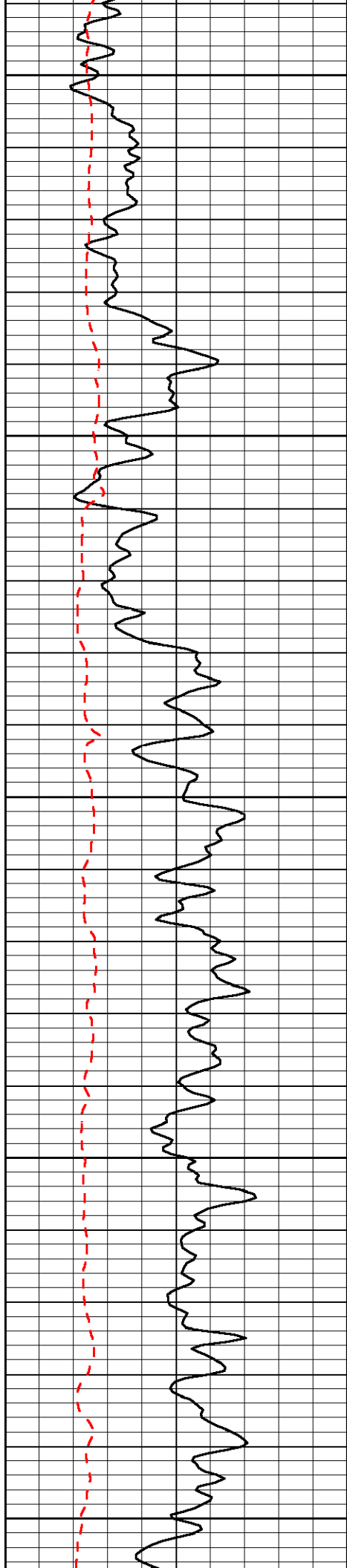
0	Gamma Ray	150	Sonic Int	140	Delta Time (usec/ft) (usec/ft)	40
150	Gamma Ray	300	5 (msec)	0	SPOR (pu)	-10
6	Caliper (in)	16		10000	LTEN (lb) (lb)	0
						LSPD (ft/min)

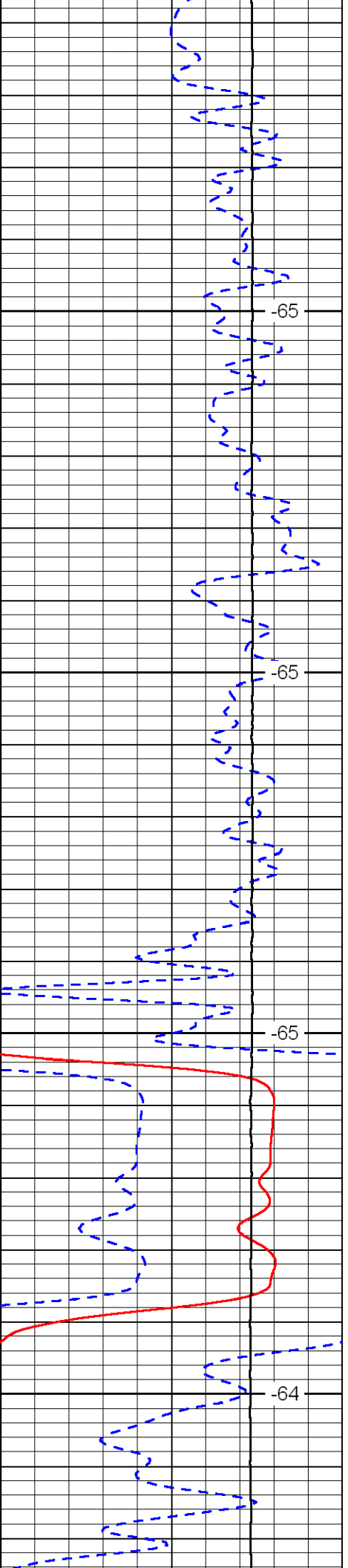
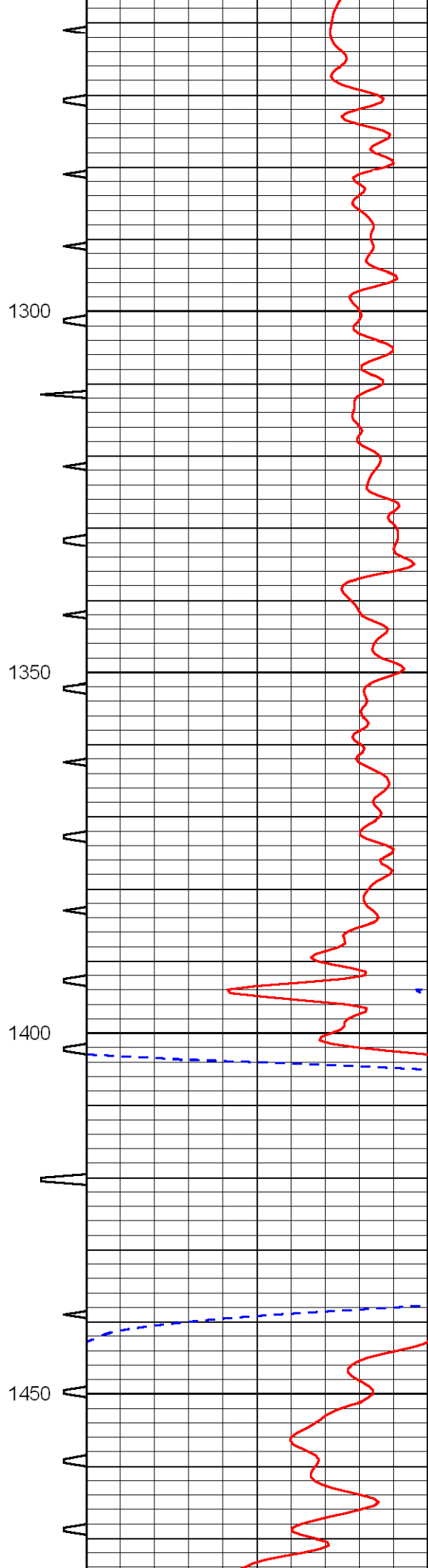
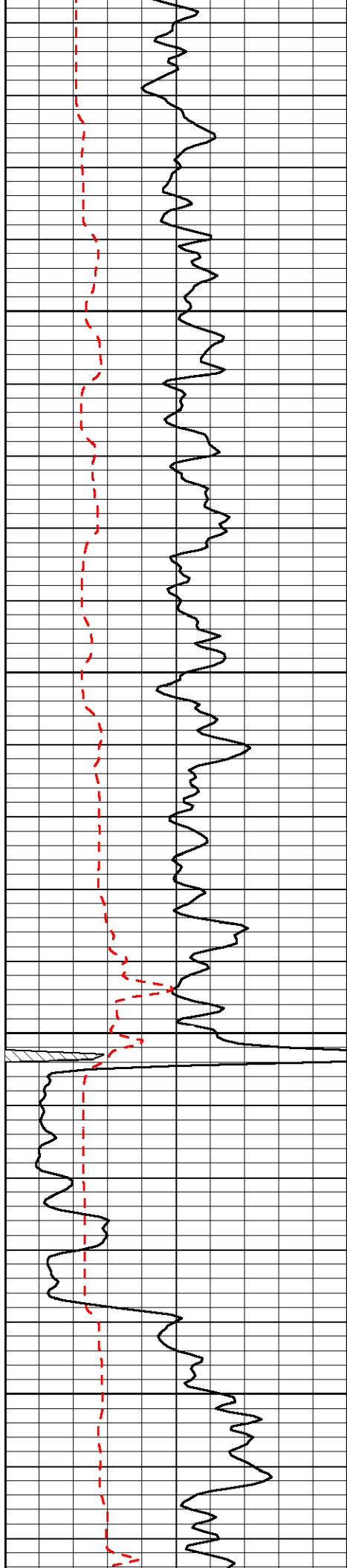












1300

-65

1350

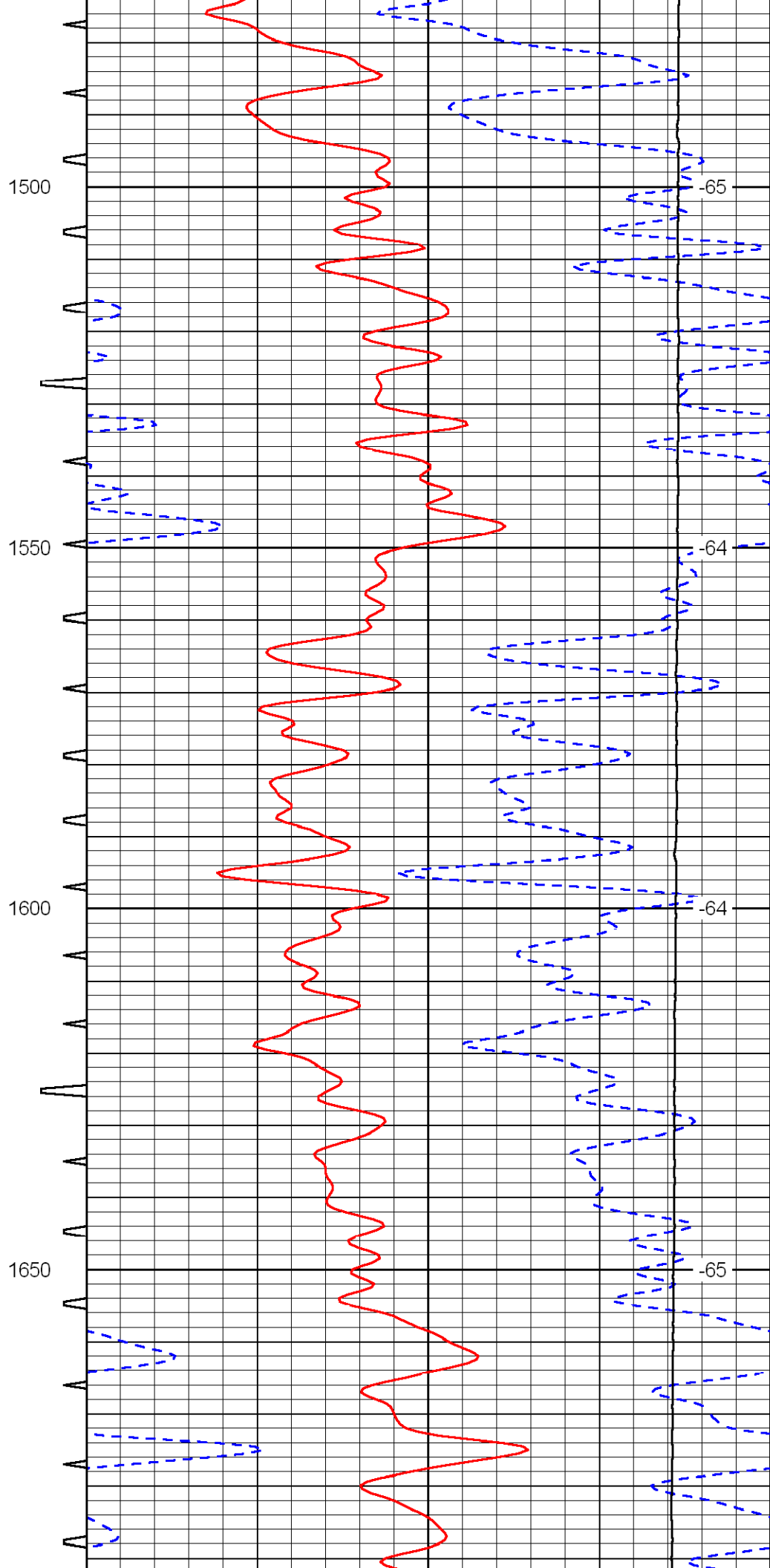
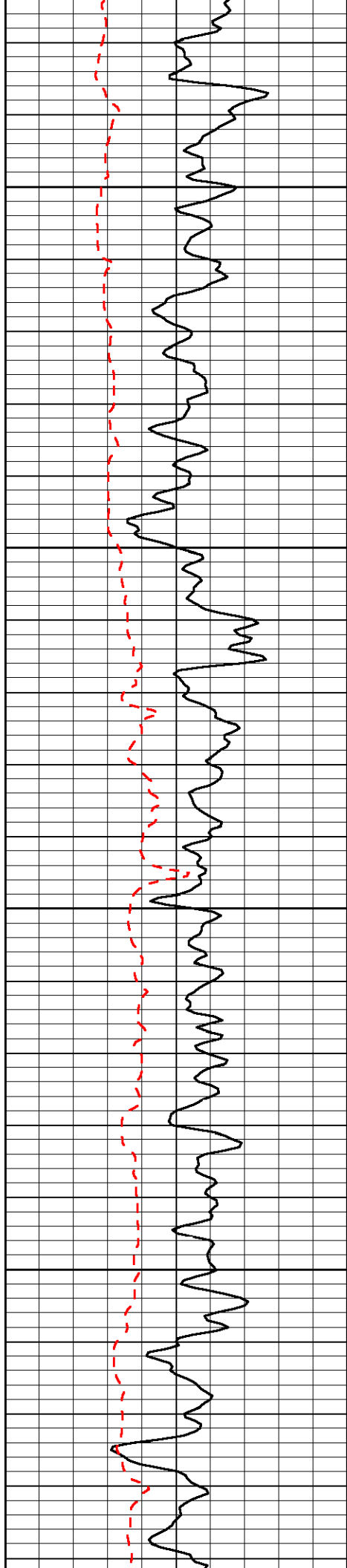
-65

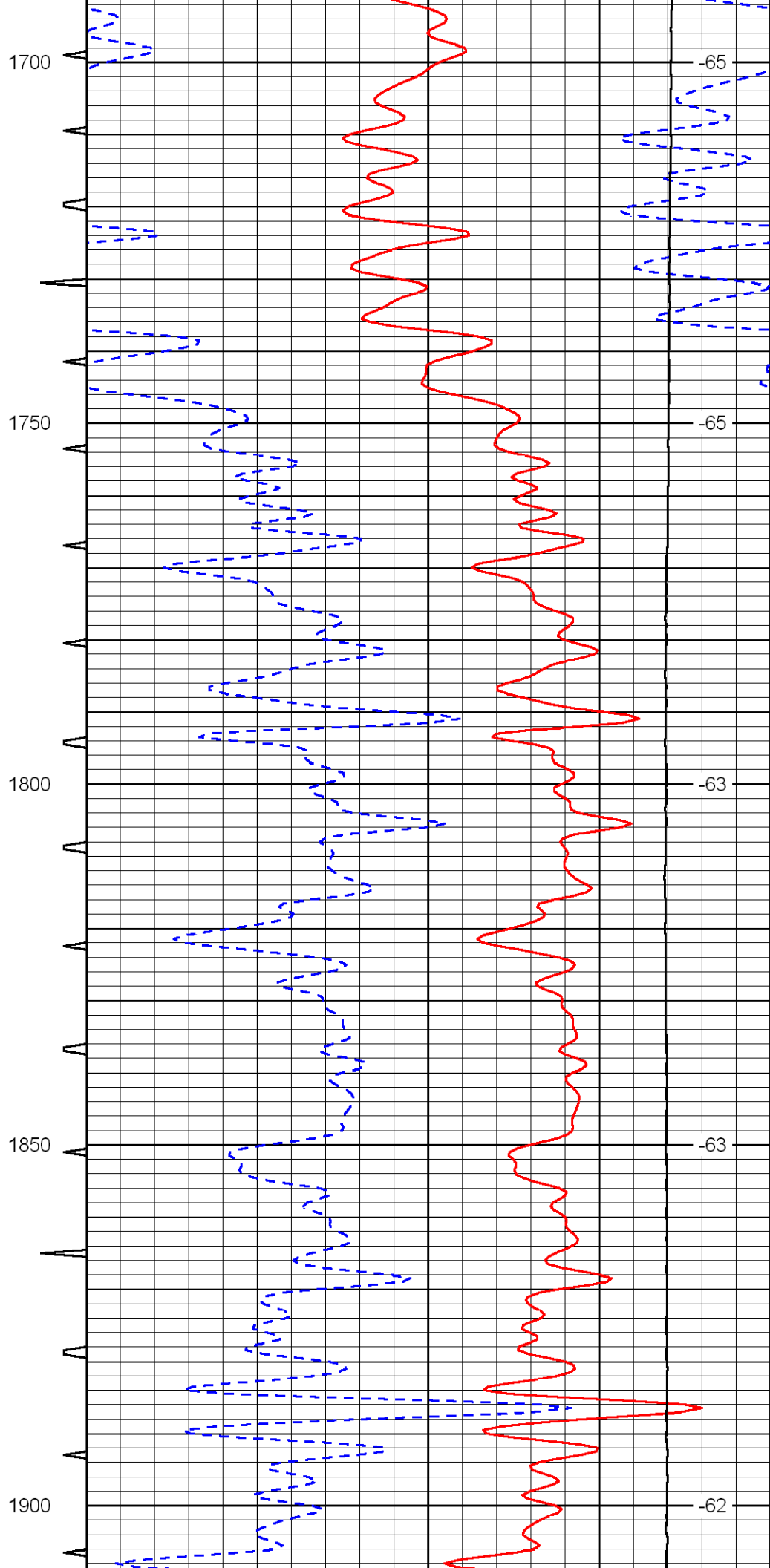
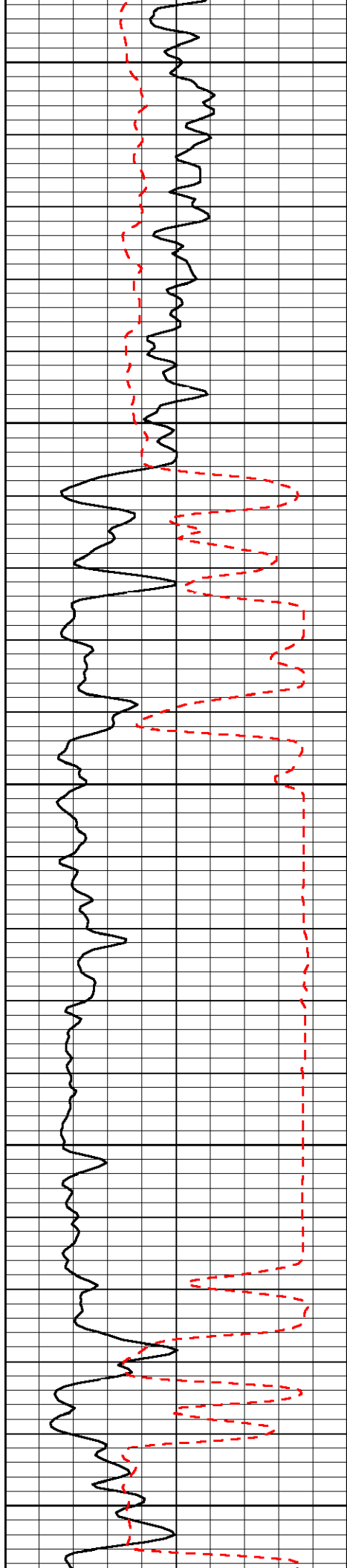
1400

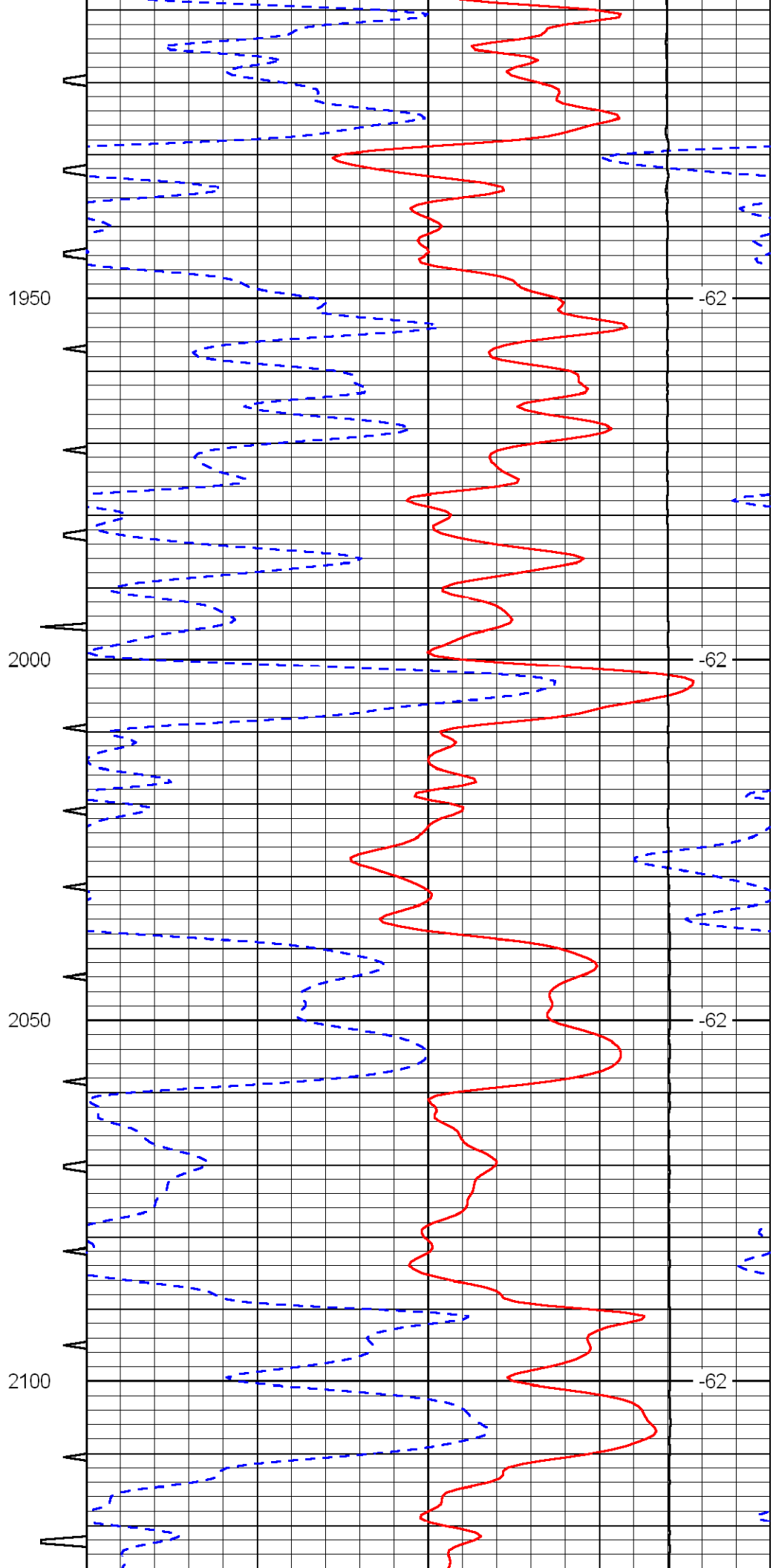
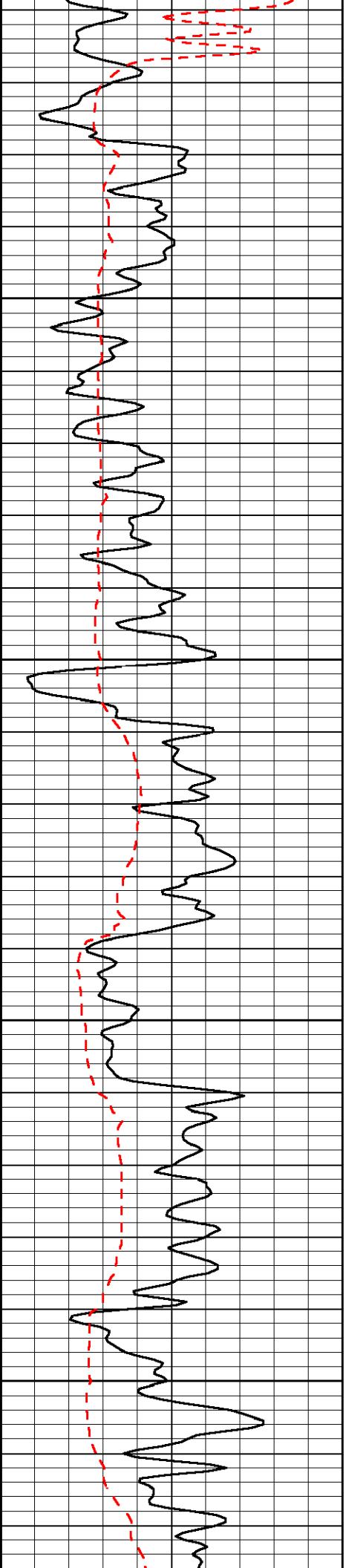
-65

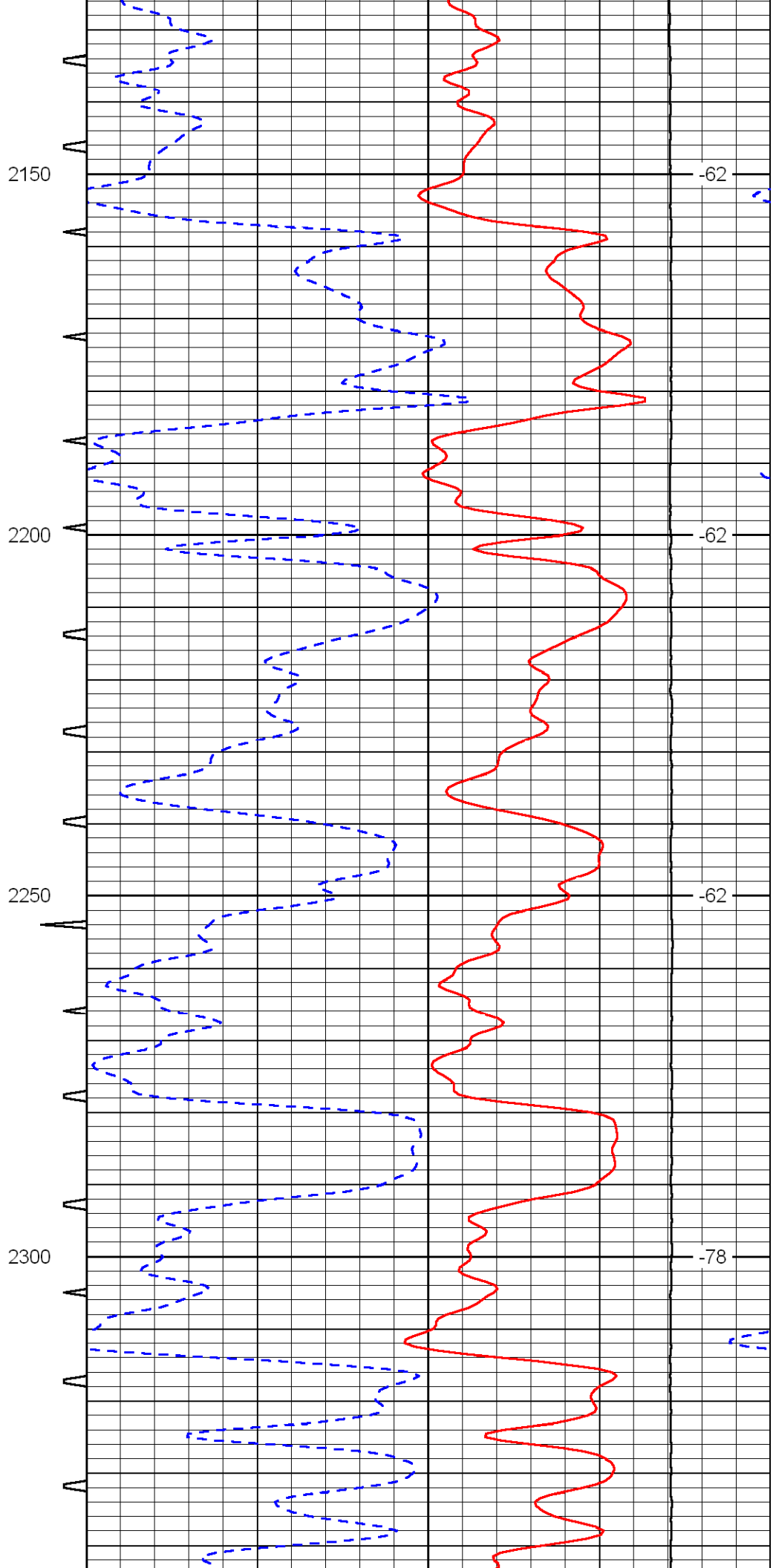
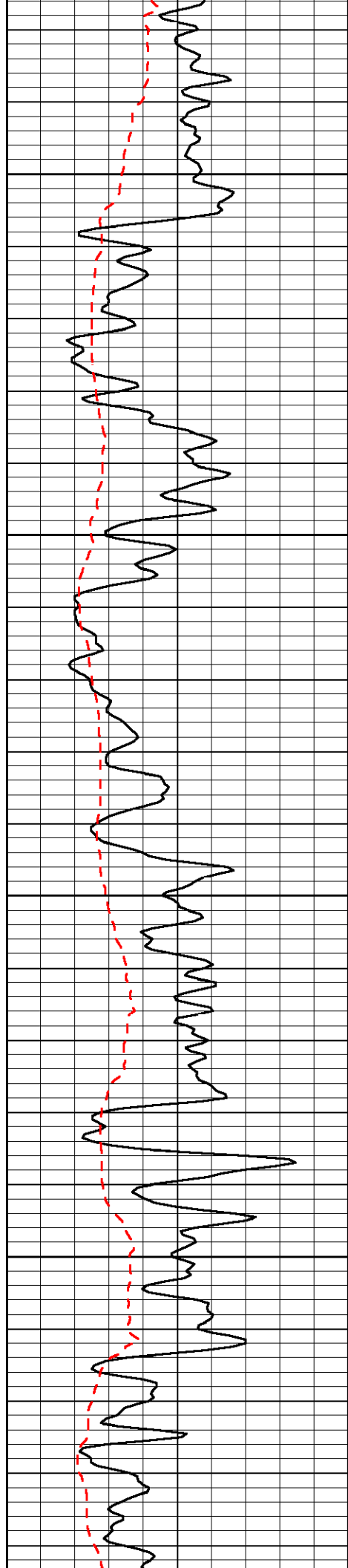
1450

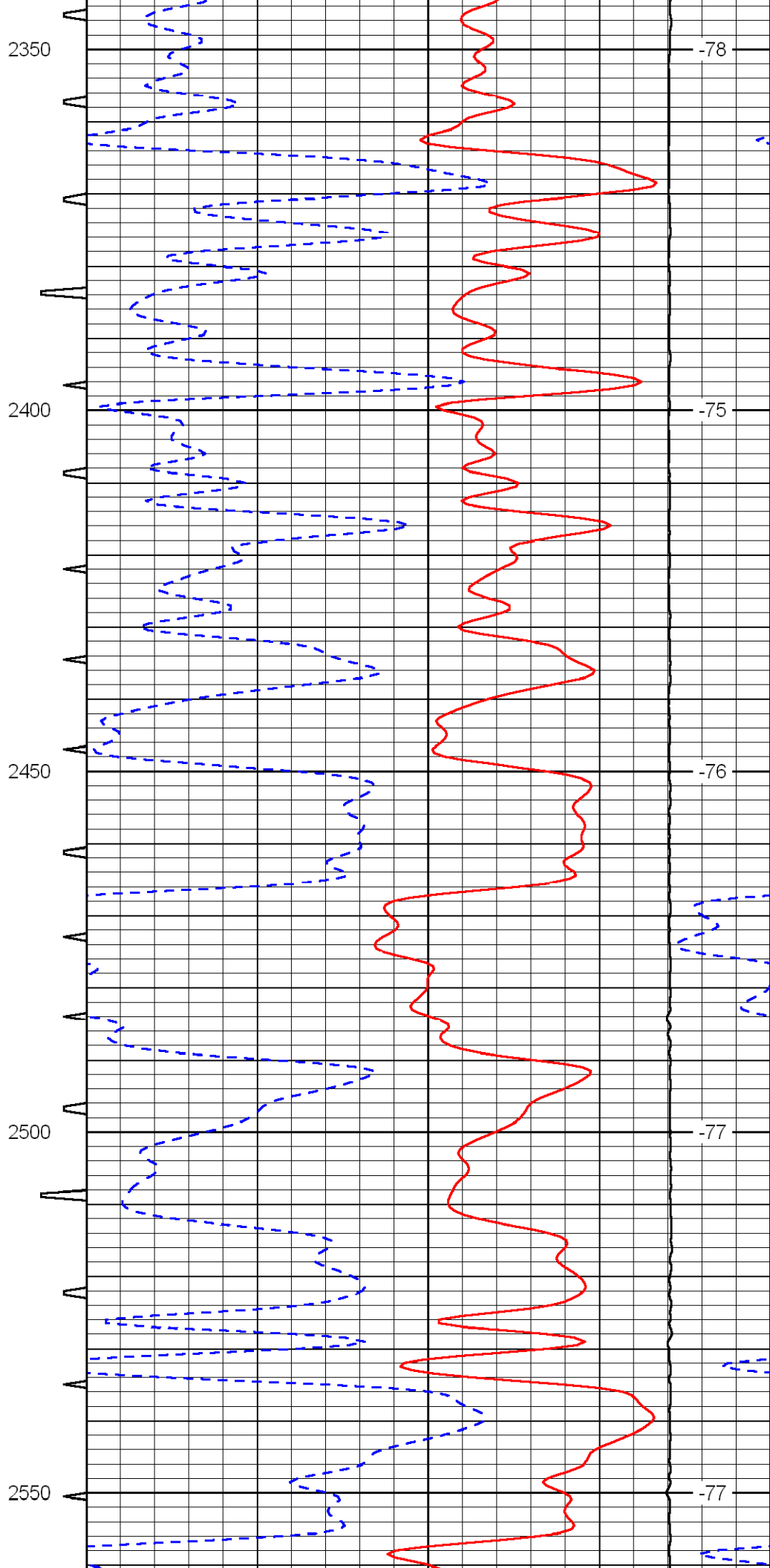
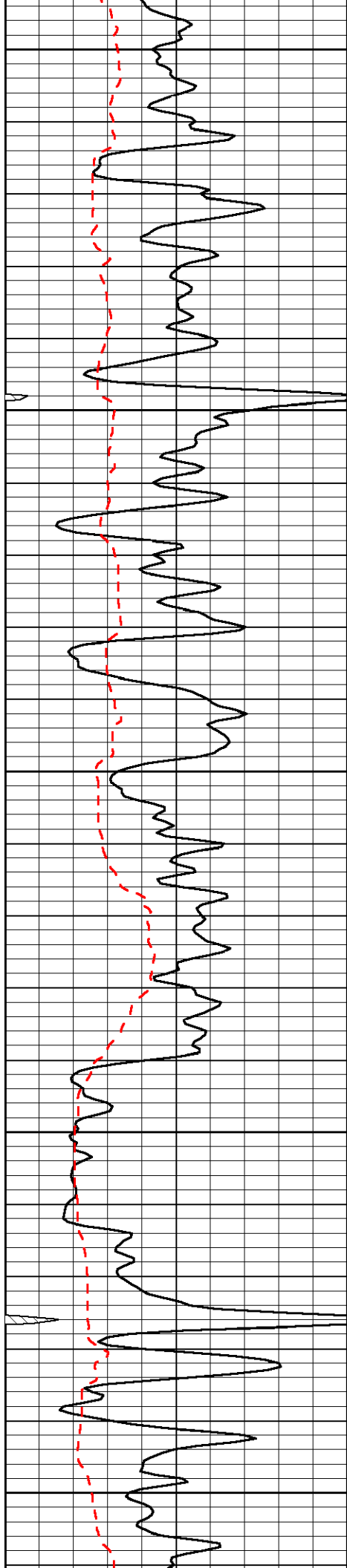
-64











-78

-75

-76

-77

-77

